

Global Wildlife Disease News Map

Explore wildlife disease news occurring around the globe



Global Wildlife Disease News Map – A Help Guide



Use this visual guide to quickly learn about how the Global Wildlife Disease News Map works and the many functions it has to offer for viewing where wildlife disease news is happening around the world.

If you have questions or need to report a problem, please contact us at map@wdin.org Feedback and comments are always welcome!

Table of Contents

| | |
|---|---|
| Navigating the Map | 2 |
| Read Original News Reports Found on Map | 2 |
| Combine Map Views & Elements to Narrow Stories Displayed on Map | 3 |
| Search News Articles | 4 |
| Use Additional Map Settings..... | 4 |
| Changing Display Options | 5 |
| 1) List of Articles View | 5 |
| 2) Timeline View | 6 |
| Making Use of RSS Map Feeds | 7 |
| 1) GeoRss Feed..... | 7 |
| 2) GeoRss Feed in Google Earth | 8 |
| Understanding Data Export Toolbox Options | 9 |

Navigating the Map

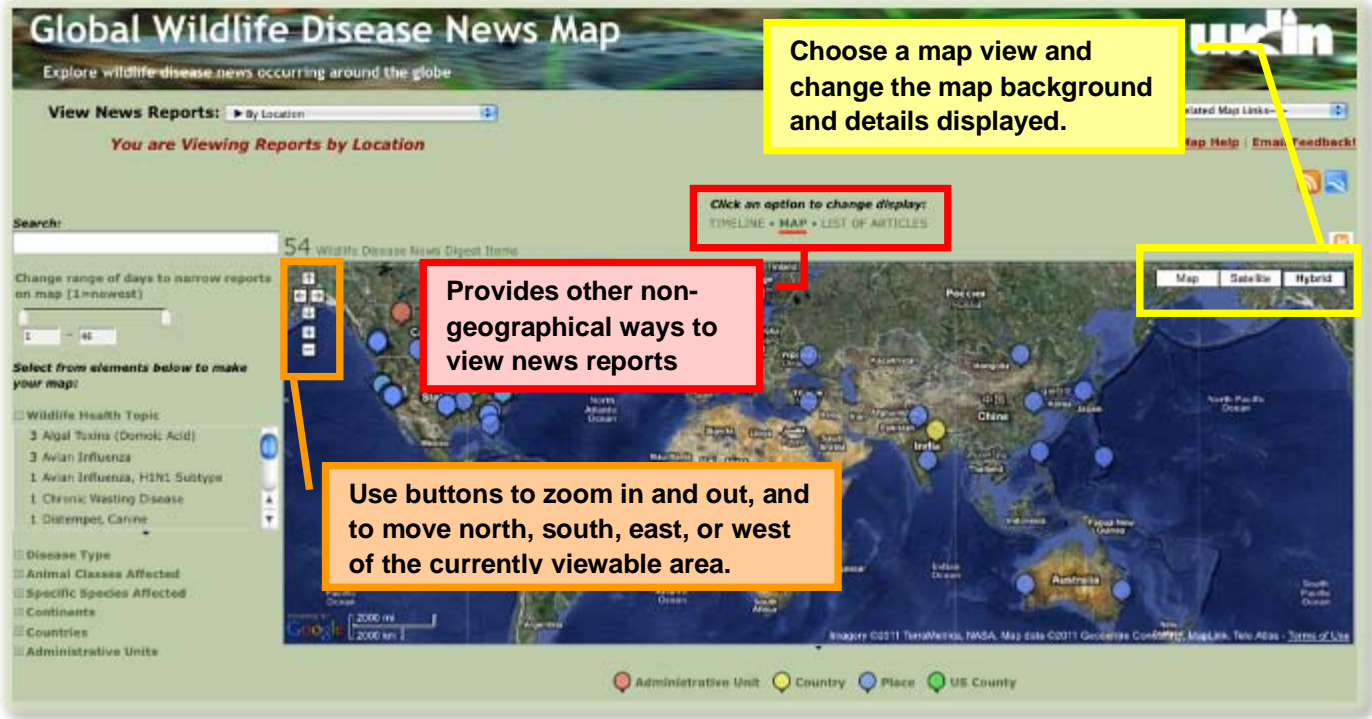


Figure 1: Illustrates the basic features available to navigate the map.

Read Original News Reports Found on Map



Figure 2: Map showing news articles at the selected place related to White-nose syndrome, found by clicking a pushpin in the place of interest

Combine Map Views & Elements to Narrow Stories Displayed on Map

The screenshot shows the 'Global Wildlife Disease News Map' interface. A blue arrow points from the 'View News Reports' dropdown menu to a larger callout box. This callout box lists the following options: 'By Location', 'By Animal Classes Affected', 'By Potential Human Threats', 'By Wildlife Health Topic (back to 1st report)', and 'By Disease Types'. A second callout box, highlighted in blue, states: 'Limit news reports from 1-45 days for Location, Animal Classes Affected and Potential Human Threats. Expanded day ranges (dating back to the 1st report in 2006) are available in the Wildlife Health Topic and Disease Type views.' A third callout box, highlighted in red, states: 'Expand or collapse a map element section by clicking on the +/- symbol next to the different headings and select which elements to display on the map. (See table below for the category descriptions)'. The interface also shows a search bar, a date range selector (1 to 46 days), and a list of map elements with expand/collapse symbols.

Figure 3: Location of where users can select different options to change which news reports appear and how they are displayed on the Map.

| Map Element Categories | Element Category Descriptions |
|----------------------------------|--|
| Wildlife Health Topic | Narrow news articles by health topics (e.g. avian influenza, West Nile virus). Users can choose to view multiple health topics together on the map. |
| Disease Types | Categorizes the news reports by disease type (e.g. fungal disease or bacterial disease). |
| Animal Classes Affected | Limit news stories by the class or type of animal (e.g. fish, bird, and/or mammal) described in the article. Users can choose to view multiple animal classes together on the map. |
| Specific Species Affected | Limit news stories by one or more specific species (e.g. dolphin, bear, and/or frog) described in the article. |
| Continents | Select to view news articles by one or more continents. |
| Countries | Select to view news articles by one or more countries. |
| Administrative Units | Select to view news articles by one or more countries' administrative units (e.g. United States – California, Florida or Canadian Provinces – British Columbia, Ontario). |

Search News Articles

Global Wildlife Disease News Map
Explore wildlife disease news occurring around the globe

View News Reports: By Location

You are Viewing Reports by Location

Search: Bats

Change range of days to narrow reports on map (1=newest)
1 - 30

Select from elements below to make your map:

- Wildlife Health Topic
 - 2 Rabies
 - 1 White-nose syndrome (WNS)
- Disease Type
- Animal Classes Affected
- Specific Species Affected
- Continents
- Countries
- Administrative Units

Enter text such as “Bats” to search all news reports by story elements, e.g. article short description, article titles, etc.

Use the slider feature or type numbers in box to define a range to days to view.

Click on a single element or multiple topic elements to change the type of stories viewed.

Figure 4: Map showing news articles related to bats, 1-30 days old with Rabies or White-nose syndrome created by using the map filters

Use Additional Map Settings

Global Wildlife Disease News Map
Explore wildlife disease news occurring around the globe

View News Reports: By Wildlife Health Topic (back to 1st report)

You are Viewing Reports on the topic of White-nose syndrome (WNS)

Select Topic: White-nose syndrome (W)

Search:

Change range of days to narrow reports on map (1=newest)
17 - 1205

Select from elements below to make your map:

- Wildlife Health Topic
 - 20 White-nose syndrome (WNS)
- Disease Type
 - 20 Fungal
 - 68 Unknown
 - 1 Viral
- Animal Classes Affected
- Specific Species Affected
 - 1 Gray bat
 - 1 Indiana bat
- Continents

Click an option to change display:
Map Satellite Hybrid

20 Wildlife Disease News Digest Items filtered from 89 original

Reset All Filters

White-nose syndrome (WNS)

After selecting a map view to change which news reports appear, use additional map settings to narrow the number of stories displayed on the map

As different views and map elements are selected, see the number of displayed reports change.

Click on ‘Reset All Filters’ to return to the original list of reports.

Change the ‘Health Topic’, date range or select from the different map elements to change the stories displayed on map.

Pushpin/legend colors and labels change depending on the ‘News Report View’ selected

Figure 5: Map view shown is ‘View News Reports by Wildlife Health Topic. Health topic selected is White-nose syndrome. Can change stories displayed by readjusting date range or other map element settings (e.g. species affected, locations)

Changing Display Options

1) List of Articles View

Global Wildlife Disease News Map
Explore wildlife disease news occurring around the globe

View News Reports: By Wildlife Health Topic (back to 1st report)

Articles on the topic of **White-nose syndrome (WNS)**

89 Wildlife Disease News Digest Items

Search: [Search Bar]

Change range of days to narrow reports on map (1=newest)

Click on headline to view original news article

Sort articles by any of these table headings

Click an option to change display: **TIMELINE • MAP • LIST OF ARTICLES**

| Headline | Article Topic | Date Published | Description | Place Name | Administrative Unit | Country |
|--|---|-----------------------------|---|------------|----------------------|---------------|
| Bat Deaths in NY, Vt. Baffle Experts | White-nose syndrome (WNS) | Wed, Jan 30, 2008, 01:00 am | Bats are dying off by the thousands as they hibernate in caves and mines around New York and Vermont, sending researchers scrambling to find the cause of mysterious condition dubbed white nose syndrome. | | New York and Vermont | United States |
| Bats in Ulster County affected by large die-off | White-nose syndrome (WNS) | Sun, Feb 3, 2008, 01:00 am | People are being urged to avoid mines and caves where bats live while an investigation is being conducted to determine what is causing the flying mammals to die off in large numbers. | | New York and Vermont | United States |
| The Gravest Threat to Bats Ever Seen: White Nose Syndrome Could Quickly Lead to Extinction | White-nose syndrome (WNS) | Tue, Feb 5, 2008, 01:00 am | ... Cavers from New Jersey to Vermont are being asked to stop spelunking to avoid spreading the disease inadvertently from cave to cave. Scientists are working to understand the disease before time runs out. | | | United States |
| Die-off of bats could hurt area crops | White-nose syndrome (WNS) | Thu, Feb 7, 2008, 01:00 am | ... Scientists say they are | | New York and Vermont | United States |

Click on an article topic to initiate a search on that topic through the Wildlife Disease Information Node (WDIN) electronic library. Search results will appear in a new window

Figure 6: Illustrates how to view news reports as a list instead of on a map.

Guided Search | Basic Search | Expert Search | Search Tips

White-nose syndrome (WNS) [Search] [Reset Search]

Sort By: Relevance

Displaying 1 - 10 of 13 Matching Records

[White-nose Syndrome News RSS Feed](#) Show Full Record

Source: National Wildlife Health Center (U.S.)
Resource Type(s): News
Searchable Keywords: [Bats](#) [Epidemiology](#) [Prevention & control](#) [United States](#) [White-nose syndrome](#)
Abstract: RSS feed for current news updates, published by various local newspapers and news services, on White-nose Syndrome. Feed maintained by the USGS National Wildlife Health Center.

[Bat Killer: White-Nose Syndrome \[Video 8 min 41 sec\]](#) Show Full Record

Source: Ravenswood Media, Vimeo - vimeo.com
Resource Type(s): Audio Visual Materials
Searchable Keywords: [Bats](#) [Disease distribution](#) [Epidemiology](#) [Mapping](#) [White-nose syndrome](#)
Abstract: Available through the Scientific American 60-Second Science web site, this video describes the infection known as white-nose syndrome, its impacts on infected bats and the measures taken for disease control and prevention. The video running time is 8 min and 41 sec.

[Maps of White-nose Syndrome Distribution](#) Show Full Record

Source: U.S. Fish and Wildlife Service
Resource Type(s): Maps
Searchable Keywords: [Bats](#) [Disease distribution](#) [Epidemiology](#) [Mapping](#) [White-nose syndrome](#)
Abstract: Provides access to maps charting the geographical distribution of white-nose syndrome. Maps plot white-nose syndrome disease distribution by county and zones of infection (which include epicenter, leading edge, and susceptible areas). Maps are in color and available for download as .pdf files.

[Bat White-Nose Syndrome \(WNS\) Occurrence by County Map - Updated Jan 28, 2010](#) Show Full Record

Source: U.S. Fish and Wildlife Service
Resource Type(s): Maps
Searchable Keywords: [Disease distribution](#) [Epidemiology](#) [United States](#) [White-nose syndrome](#)
Abstract: Displays the distribution of white-nose syndrome by county on a color coded map. The map differentiates between confirmed and likely cases and dates back to February 2006, when the first case was detected in Schoharie County, New York.

Figure 7: Clicking on a disease name in the article topic column initiates a search within the WDIN's library on that disease topic. This example shows results for the disease, White-nose syndrome.

2) Timeline View

Click on headline and go to original news source to read the full article.

View articles in a timeline that shows articles over time intervals.

Click an option to change display:
TIMELINE + MAP + LIST OF ARTICLES

Click on article title to open pop up window to see story details (e.g. date published, location and story excerpt)

View articles titles on a timeline. Navigate by holding down the mouse (it will change to a hand), moving left for older articles and right for more current ones.

Article titles are color coded by disease type.

Figure 8: View of a list of reports displayed over time

Making Use of RSS Map Feeds

1) GeoRss Feed

Global Wildlife Disease News Map
Explore wildlife disease news occurring around the globe

View News Reports:

You are Viewing Reports by Location [Map Help](#) [Email Feedback](#)

Click an option to change display:
TIMELINE • **MAP** • LIST OF ARTICLES

63 Wildlife Disease News Digest Items

Search:

Change range of days to narrow reports on map (1=newest)
 -

Select from elements below to make your map:

- Wildlife Health Topic
- 3 Algal Toxins (Domoic Acid)
- 3 Avian Influenza
- 1 Avian Influenza, H1N1 Subtype

Wildlife Disease Information Node News Digest - GeoRSS Feed
syndicated content powered by FeedBurner

FeedBurner makes it easy to receive content updates in My Yahoo!, Newsgator, Bloglines, and other news readers.

Learn more about syndication and FeedBurner...

Subscribe Now!

...with web-based news readers. Click your choice below:

- MY YAHOO!
- newsgator
- MY AOL
- Bloglines
- netvibes
- Google
- Pagefakes

...with other readers:

[View Feed XML](#)

Current Feed Content

- Second whale found dead in Loch Carnan (Scotland, United Kingdom)**
Posted: Sat, 21 May 2011 22:00:00 PDT
Published by BBC News - news.bbc.co.uk on 5/22/2011 - A second pilot whale has been found dead in a Hebridean loch after experts feared more than 60 of the animals had been at risk of becoming beached. . . . Tests on a body found earlier suggested the female died from disease, not because it was stranded on rocks.

This feed type can be used with a feed reader or used as a map layer in a mashup.

Figure 9: GeoRss feed of current stories mapped to the Global Wildlife Disease News Map.

2) GeoRss Feed in Google Earth



Figure 10: GeoRss Feed in Google Earth

Understanding Data Export Toolbox Options



The screenshot shows the 'Global Wildlife Disease News Map' interface. At the top, it says 'Explore wildlife disease news occurring around the globe' and features the 'ucin' logo. Below the header, there's a 'View News Reports:' dropdown menu set to 'By Location'. A red banner indicates 'You are Viewing Reports by Location'. On the right, there are links for 'Map Help' and 'Email Feedback!'. A search bar is on the left. A yellow callout box with an orange border is overlaid on the map, containing text about the 'Toolbox' icon and a list of export formats. The map itself shows a globe with several blue circular markers over East Asia, and a dropdown menu is open over the map, listing: RDF/XML, Semantic wikitext, Tab Separated Values, Exhibit JSON, and Facet Selections. An orange arrow points from the callout box to the 'Toolbox' icon on the map.

This icon is referred to as the Toolbox in the SIMILE Exhibit Framework. Clicking the Toolbox icon allows users to export the data they are viewing in a number of formats, which are useful for pulling the data into a variety of external applications.

In order to export data from the News Map, click the icon, and select from the format you wish the data to be presented in. In each format, a new window will appear where users can copy and paste the text into a new file or directly into the application desired.

A brief description of the available formats:

- 1) RDF/XML – RDF stands for Resource Description Framework and is used on the web to encode knowledge and information for use in the Semantic web. This standard makes it easier for other computers or programs to read the information because they understand how it can be read versus a prettily formatted block of text fit for human browsing. The additional plus of RDF is that it allows users to create relationships between pieces of information that the machine can in turn learn.
- 2) Semantic Wikitext – This is meant to be consumed by wiki software, and is used by the software to display HTML. It converts the information into a simplified version of HTML that Wikis can use. (http://en.wikipedia.org/wiki/Wiki_markup)
- 3) Tab Separated Values – This is probably the most useful format for any casual user. This format will paste well into Microsoft Excel or other spreadsheet tools which would allow users to filter/sort and mash up the data locally on their own computers.
- 4) JSON – JSON stands for JavaScript Object Notation. This is a lightweight text-based standard for human-readable data interchange. It is often used by servers and web applications to transfer data from one to the other, as an alternative to XML (<http://en.wikipedia.org/wiki/Json>).
- 5) Facet Selections – This function gives the users a URL which includes a list of the facet selections currently in their view. The user should be able to return to or share the URL and find the same view of the data they were exploring when they saved the URL originally.
- * 6) Generated HTML of this view - (Only available in 'List of Articles' view) – This option produces the table HTML for the list of articles the user is viewing for plugging into another website or for any use the user has. The table is no longer sortable as it is in the live website view, but all the information is carried over into the HTML for use offsite. Any HTML links are kept intact as well.

Figure 11: Description of export formats for Toolbox in SIMILE Exhibit Framework