

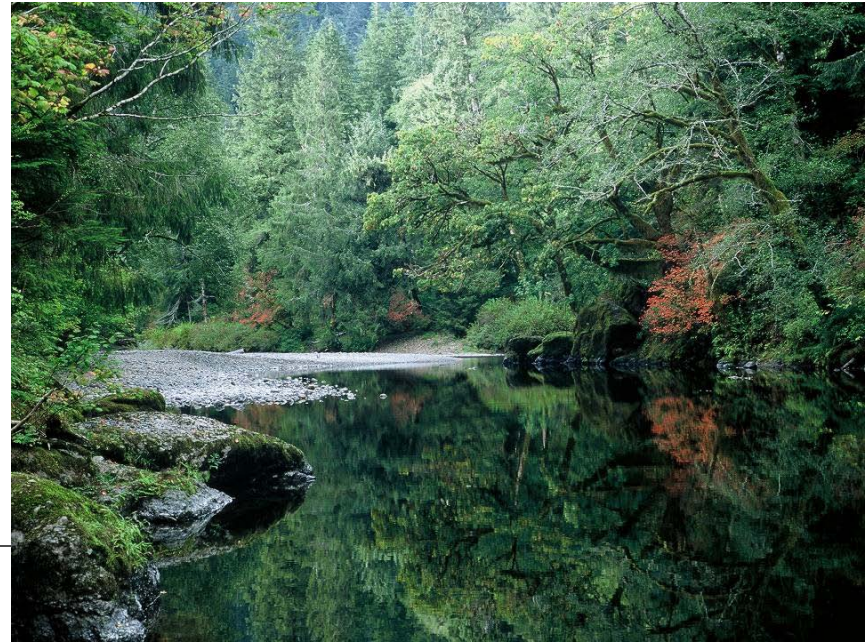
A scenic landscape featuring a river flowing through a forest. The trees are in various stages of autumn, with some showing vibrant yellow and orange leaves, while others are still green. A person is seen fishing in the river, standing in the water. The river flows from the background towards the foreground, with a rocky bar in the middle. The overall atmosphere is peaceful and natural.

NORTH AMERICAN

Salmon Stronghold
PARTNERSHIP

Topics

- Overview: North American Salmon Stronghold Partnership
- Priorities and Funding
- Stronghold Legislation
- Coordination with FHPs and Status of our NFHAP Candidacy



Wild Salmon Center

Mission: To understand and protect best wild salmon ecosystems across the northern Pacific Rim

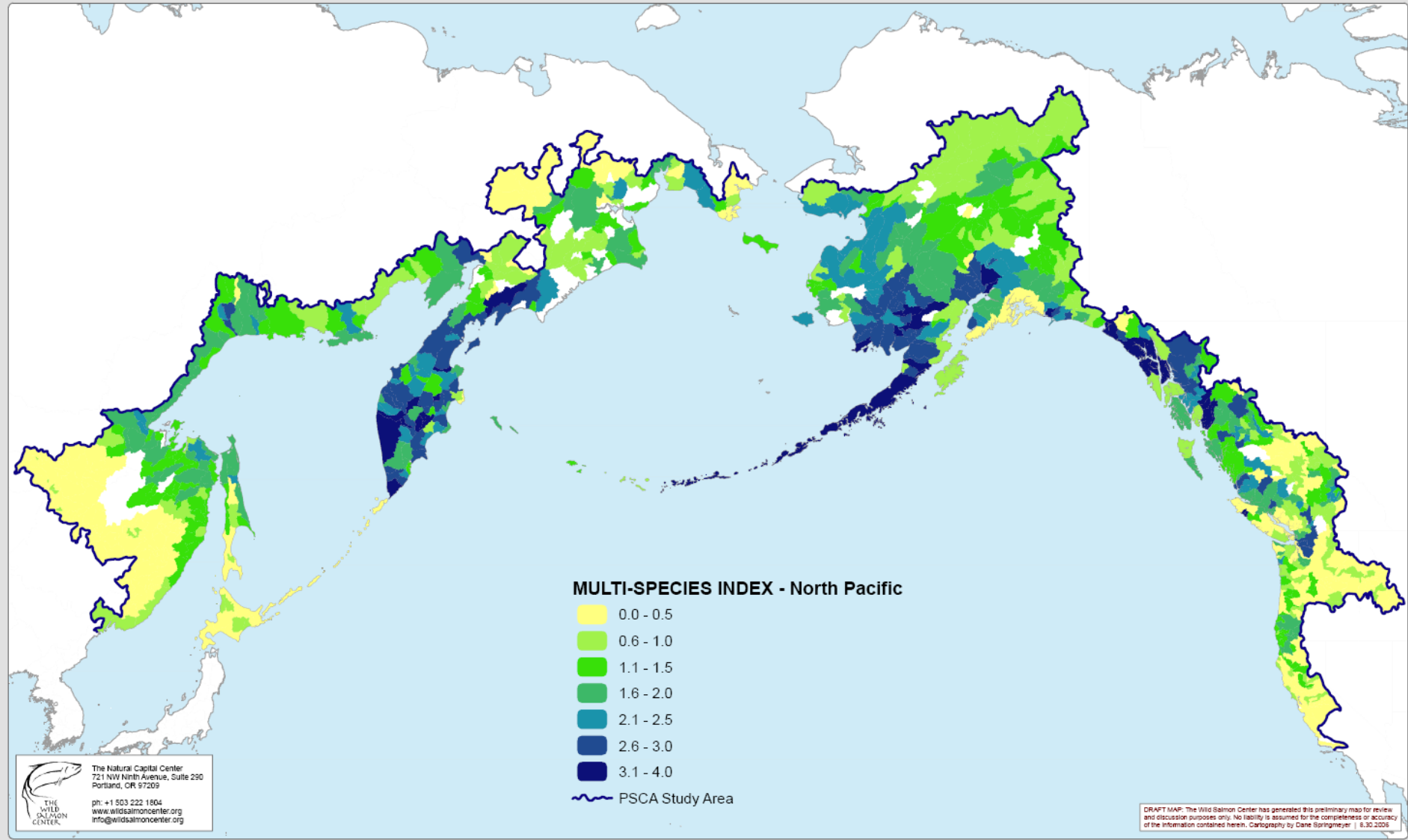
Programs:

- Western Pacific
- Sustainable Fisheries
- State of the Salmon
- North America



Pacific Salmon Conservation Assessment

The Pacific Salmon Conservation Assessment Identifying the North Pacific rivers most likely to sustain resilient wild populations of salmon in the face of growing, rangewide threats.



Threats

- Climate change
- Population growth and development
- Resource extraction

A holistic view of salmon conservation must focus on maintaining the viability of populations in healthy watersheds over the long term.

NA Salmon Stronghold Partnership

Federal

USFWS
NOAA
USFS
EPA
NWPCC
BPA

State

ADFG
WDFW
WA Salmon Recovery Office
ODFW
OR Governor's Office
IDOSC
CDFG

NGO

The Nature Conservancy
Trout Unlimited
Wild Salmon Center

Tribal

Columbia River Intertribal Fish Commission

Canada

Pacific Fisheries Resource Conservation
Council-*Ex Officio*



Mission

Identify and protect the healthiest remaining ecosystems in North America to ensure the long-term survival of salmon, steelhead and the many species that depend on them.



How does NASSP work?

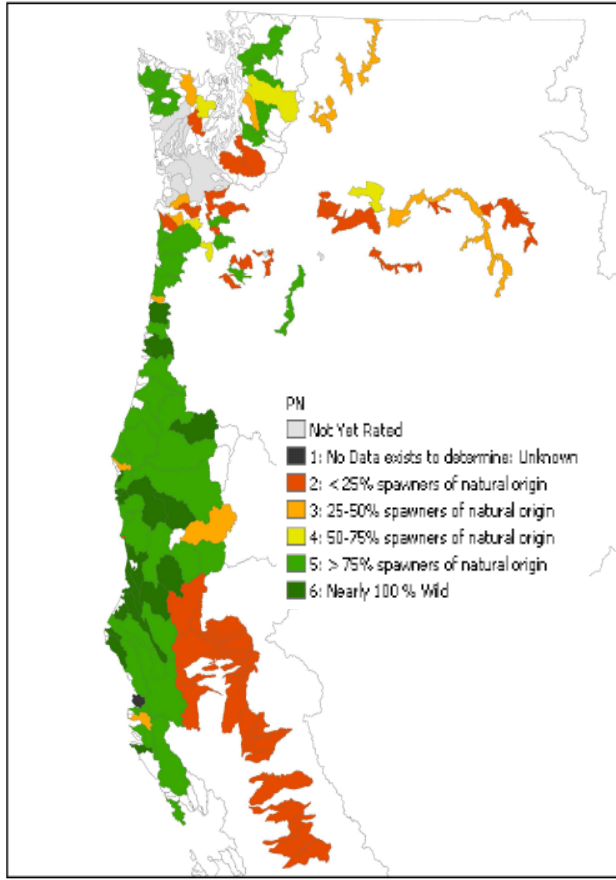
- 1. Partnership identifies strongholds based on scientific criteria**
- 2. Steering Committee confers stronghold status**
- 3. The Board identifies annual priorities for the investment of funds and criteria for evaluation of project proposals**
- 4. Based on priorities set by the Board, States and/or NFWF announce a request for proposals**
- 5. Partners submit proposals for high value conservation projects at the watershed level or innovative strategies that promote conservation across multiple strongholds**

How does NASSP work?

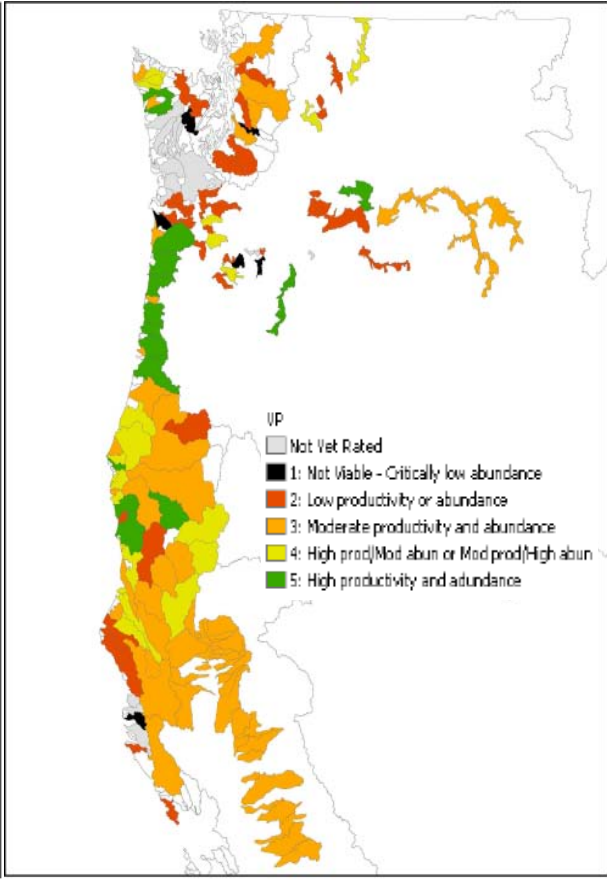
- 1. Partnership identifies strongholds based on scientific criteria**
- 2. Steering Committee confers stronghold status**
3. The Board identifies annual priorities for the investment of funds and criteria for evaluation of project proposals
4. Based on priorities set by the Board, States and/or NFWF announce a request for proposals
5. Partners submit proposals for high value conservation projects at the watershed level or innovative strategies that promote conservation across multiple strongholds

Stronghold Identification (criteria)

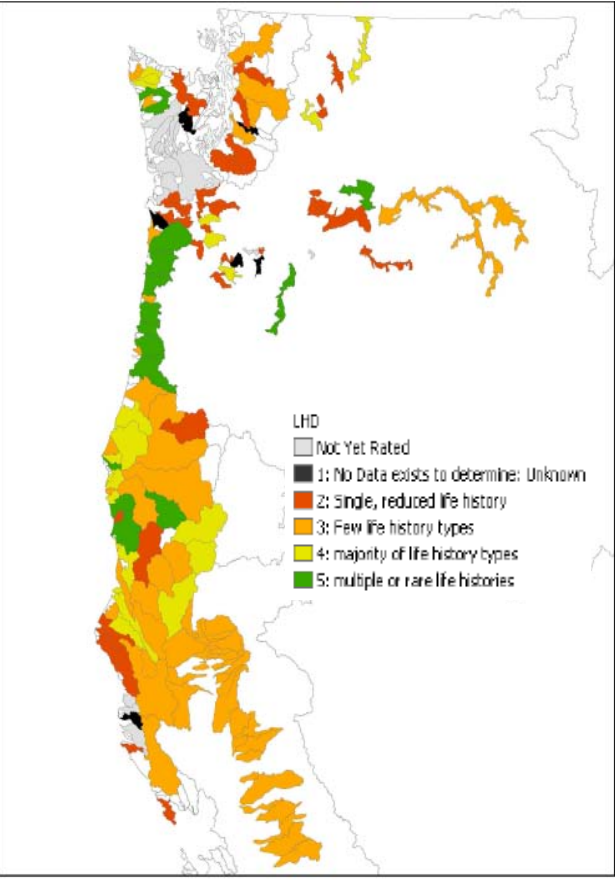
Percent Natural



Viability



Life history diversity



Stronghold Identification (index)

Example: CA Winter Steelhead

PN

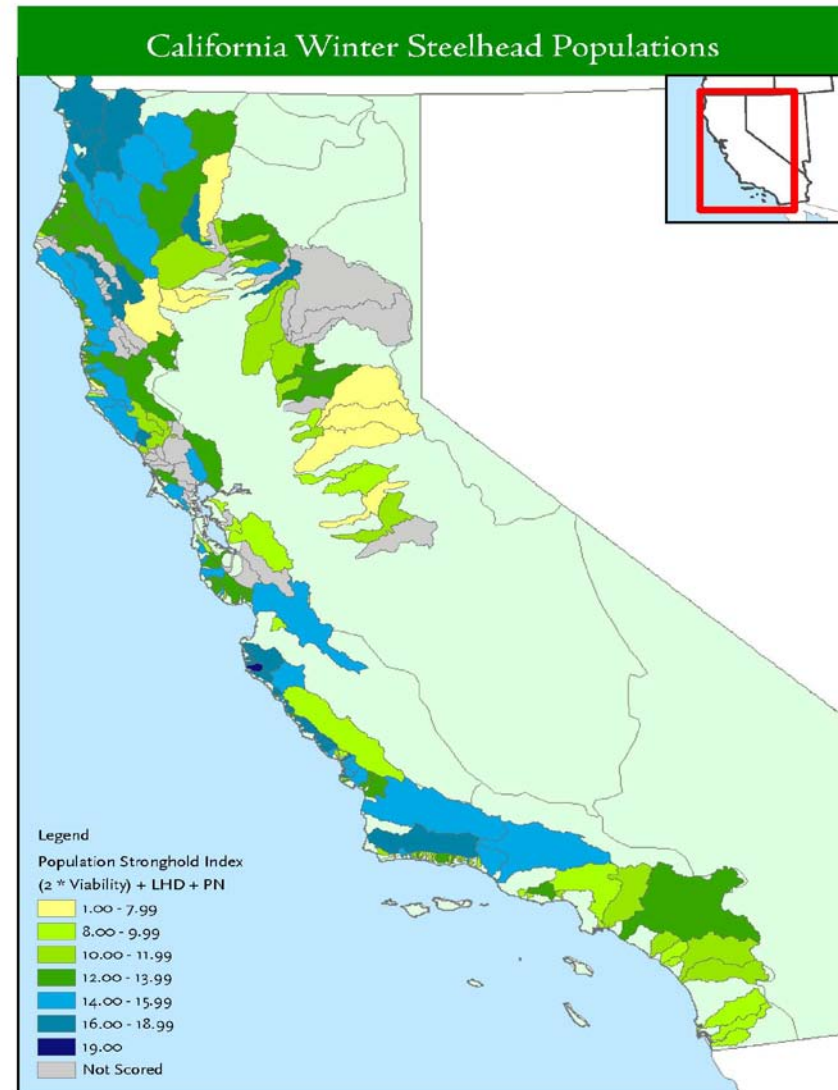
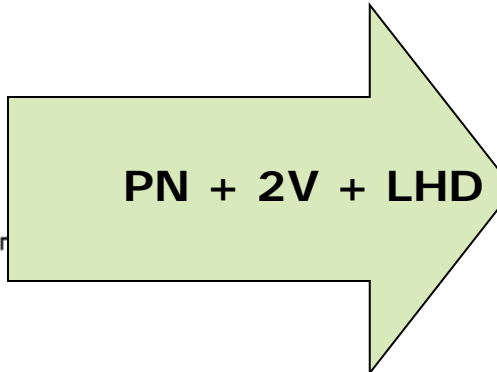
- Not Yet Rated
- 1: No Data exists to determine: Unknown
- 2: < 25% spawners of natural origin
- 3: 25-50% spawners of natural origin
- 4: 50-75% spawners of natural origin
- 5: > 75% spawners of natural origin
- 6: Nearly 100% Wild

UP

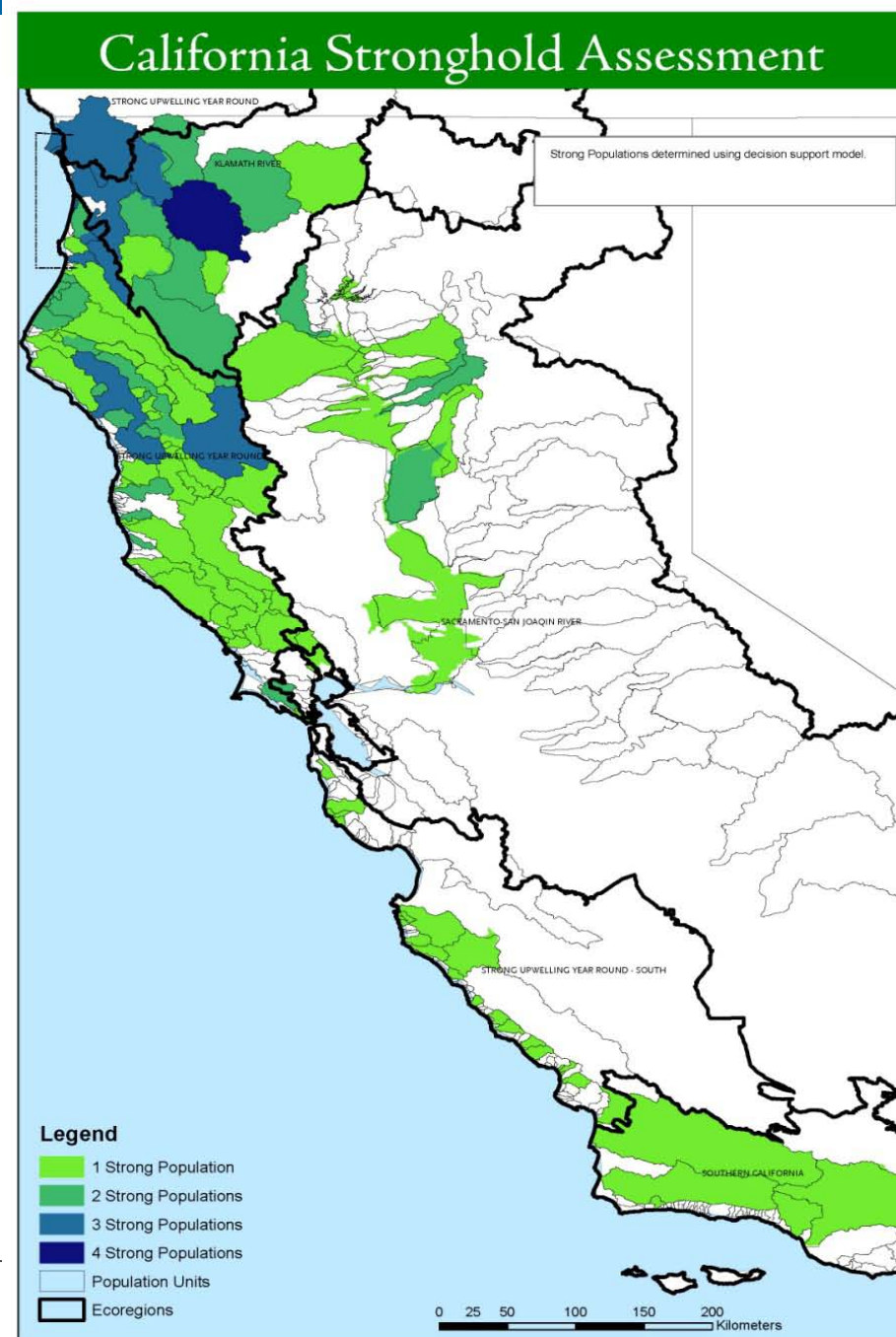
- Not Yet Rated
- 1: Not Viable - Critically low abundance
- 2: Low productivity or abundance
- 3: Moderate productivity and abundance
- 4: High prod/Mod abun or Mod prod/High abun
- 5: High productivity and abundance

LHD

- Not Yet Rated
- 1: No Data exists to determine: Unknown
- 2: Single, reduced life history
- 3: Few life history types
- 4: majority of life history types
- 5: multiple or rare life histories



Strong Populations (California)



How does NASSP work?

1. Partnership identifies strongholds based on scientific criteria
2. Steering Committee confers stronghold status
3. **The Board identifies annual priorities for the investment of funds and criteria for evaluation of project proposals**
4. Based on priorities set by the Board, States and/or NFWF announce a request for proposals
5. Partners submit proposals for high value conservation projects at the watershed level or innovative strategies that promote conservation across multiple strongholds

Priorities and Project Selection

- Implement on-the-ground protection and restoration projects promoting long term viability of strong populations and prevention of harm
- Address threats and management challenges common across multiple basins
- Address key gaps in monitoring the status and trends of salmon populations or ecosystem conditions
- Document and/or mitigate effects of climate change on salmon populations
- Increase local economic opportunities, including fishing & recreation

What is major source of grant money?

Pacific Salmon Stronghold Conservation Act of 2009

As a complement to ongoing recovery efforts,

- 1. Establishes new federal policy to focus federal technical and financial resources on the conservation of strongholds**
- 2. Creates a competitive grants program to support voluntary, cooperative conservation efforts in salmon strongholds**
 - Watershed level activities**
 - Programmatic, multi-basin initiatives**



Pacific Salmon Stronghold Conservation Act of 2009

H.R. 2055

- Lead sponsors: Mike Thompson (D-CA) and Mike Simpson (R-ID)
- 43 cosponsors
- Subcommittee hearing on June 16th

S. 817

- Lead sponsors: Maria Cantwell (D-WA) and Lisa Murkowski (R-AK)
- Co-sponsorship from entire west coast delegation
- Passed by Commerce Committee



How does NASSP work?

1. Partnership identifies strongholds based on scientific criteria
2. Steering Committee confers stronghold status
3. The Board identifies annual priorities for the investment of funds and criteria for evaluation of project proposals
4. **Based on priorities set by the Board, States and/or NFWF announce a request for proposals**
5. **Partners submit proposals for high value conservation projects at the watershed level or innovative strategies that promote conservation across multiple strongholds**

How could this complement FHPs?

- Address programmatic issues impacting multiple basins
- Address key gaps in monitoring the status and trends of salmon populations or ecosystem conditions
- Generate additional resources for high value conservation actions in FHPs or other areas not covered by NFHAP



How could this complement FHPs?

- Address programmatic issues impacting multiple basins
- Address key gaps in monitoring the status and trends of salmon populations or ecosystem conditions
- Generate additional resources for high value conservation actions in FHPs or other areas not covered by NFHAP



Examples

Programmatic (Alaska)

- Land use planning
- Stock assessments
- Monitoring
- Water right reservations

On the Ground (lower 48)

- Coastal/Estuarine FHP and Inland Strongholds





Thank you.

Mark Trenholm
mtrenholm@wildsalmoncenter.org

Kilchis, Tillamook, OR