



Salmon in the City



Municipality of Anchorage
www.muni.org



Salmon Legacy



Broad-based Partnership

SALMON IN THE CITY FESTIVAL

AUGUST 3rd - 19th in DOWNTOWN ANCHORAGE



Salmon in the City

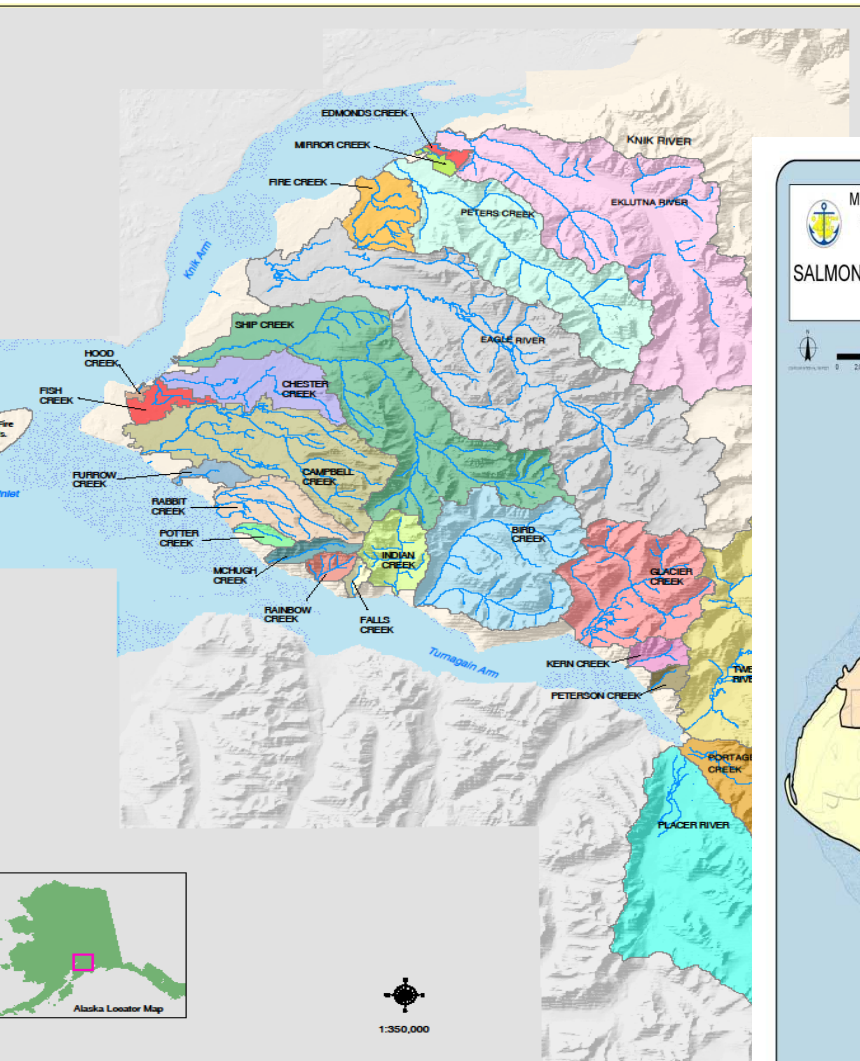
**FOR A COMPLETE SCHEDULE OF EVENTS:
SALMONINTHECITY.MUNI.ORG**



ConocoPhillips

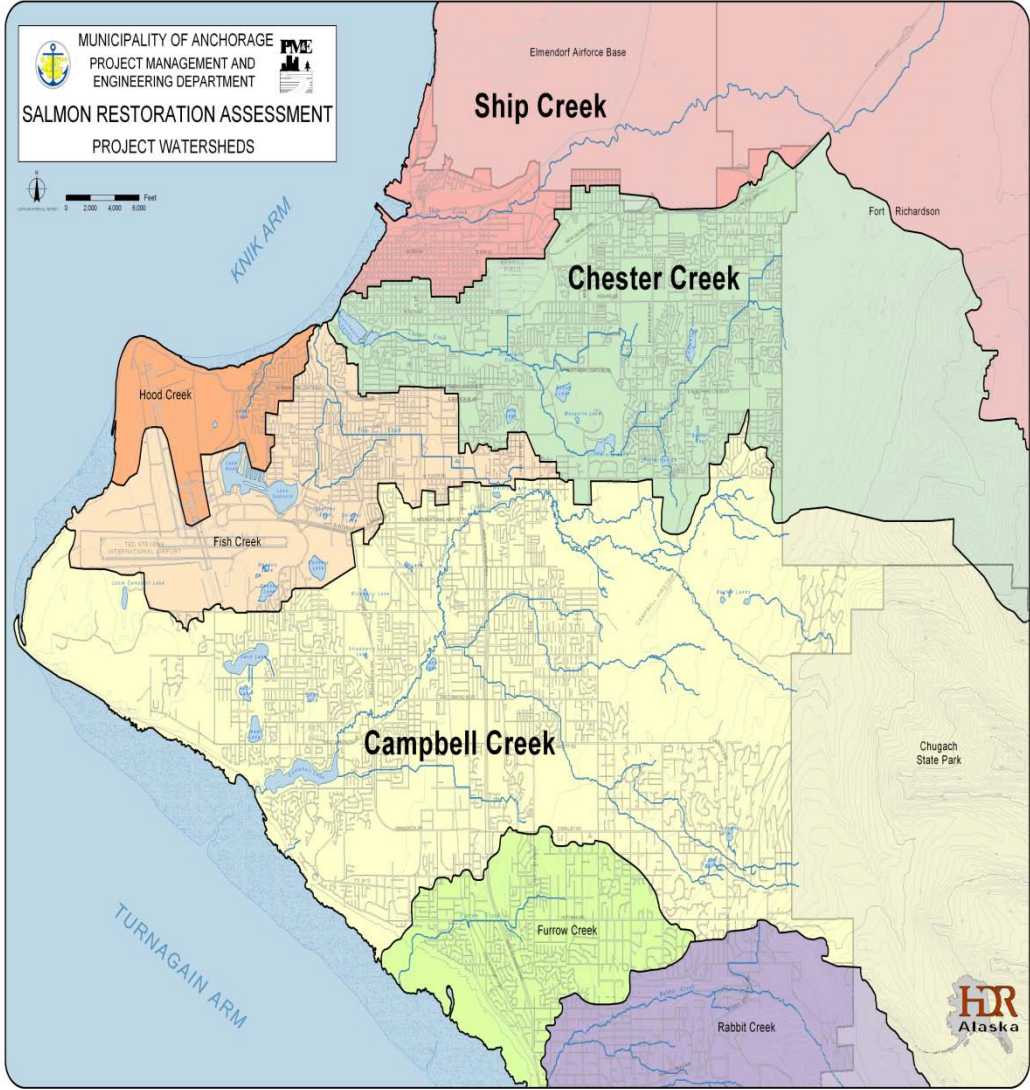
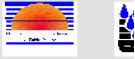
ANCHORAGE
DOWNTOWN
PARTNERSHIP.





Watersheds
Upper Cook Inlet

Municipality of Anchorage
Office of Planning, Development
& Public Works
Map compiled by GeoNorth LLC
October 2001



Strategic Planning

Watersheds provide many vital community services, and support plants and wildlife that enrich our lives. We can all help to maintain a healthy watershed.

Campbell Creek Watershed

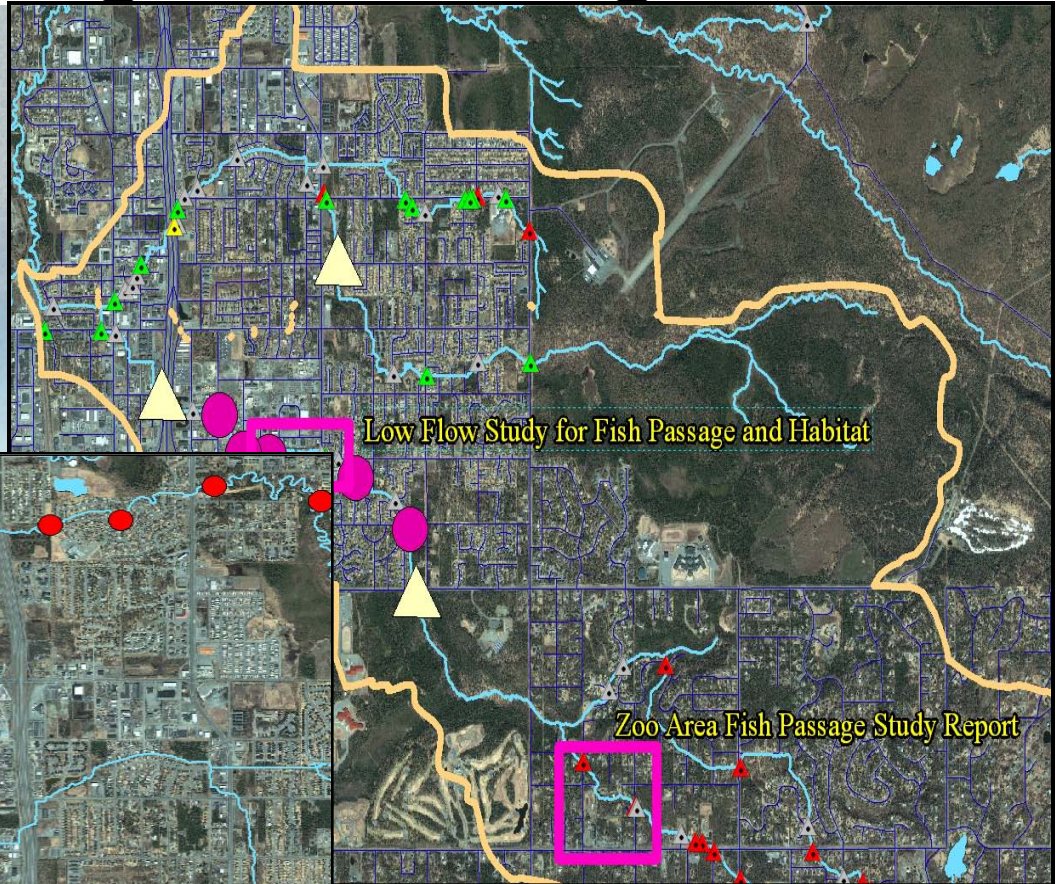
About the Watershed

A watershed is an entire region that drains into a particular river or stream; they provide resources necessary for a vibrant community and a healthy environment, including drinking water, flood control, and stormwater filtration. The Campbell Creek watershed spans nearly 78 square miles, containing 112 miles of creeks, including drainages for Campbell Creek's main tributaries: the North and South forks of Campbell Creek, and Little Campbell Creek. The watershed includes portions of Chugach State Park, all of Far North Bicentennial Park, and many neighborhoods and business districts in Anchorage.



About the Creek

Campbell Creek begins in the Chugach Mountains, flows through the city, and supports many species of fish.

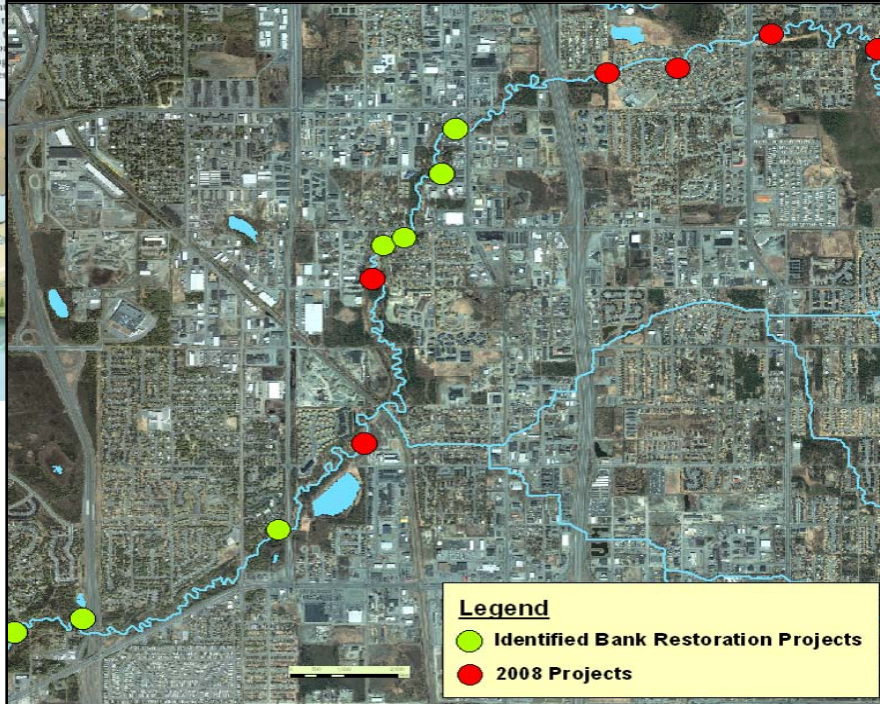


Low Flow Study for Fish Passage and Habitat

Zoo Area Fish Passage Study Report

Legend

- Identified Bank Restoration Projects
- 2008 Projects



Barrier Removal



Fish Passage & Access



Habitat Restoration



Youth & Stewardship



Program Status

- Strengths
 - Strong partnership
 - Active projects & funding
 - Elements of strategic plan developed
 - Desire to finalize plan – regardless of NFHAP final decision on full partnership
- Challenges
 - Shifting from City government-centric program
 - Recent staffing changes within the City
 - Need to identify new coordinator

Closing Observations

- Municipality of Anchorage sandwiched between two fully recognized partnerships
- MOA contains approximately half of the State's population
- Wild salmon return to several local creeks
- Anchorage residents are users of the salmon and land resources in Mat-Su and Kenai
- Anchorage has tremendous influence over state public policy and budget decisions
- There is a need to continue to engage Anchorage in NFHAP activities and habitat restoration activities in general