

Guide for

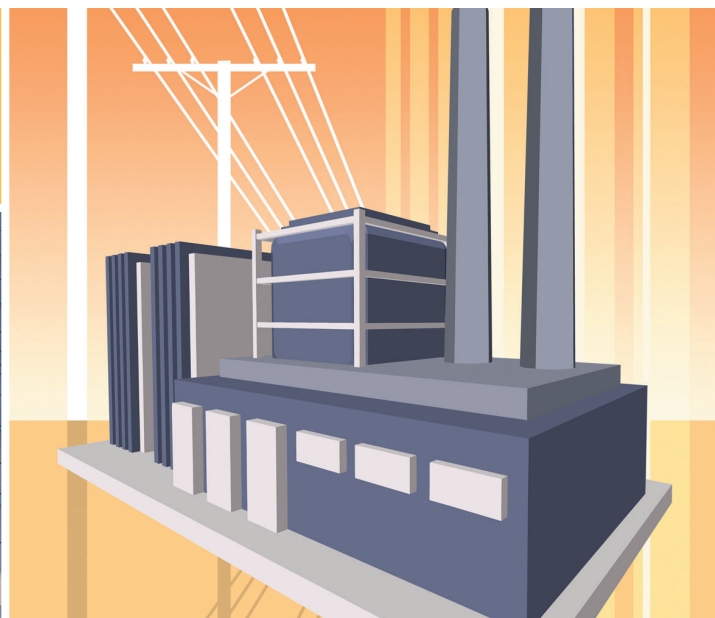


Industrial Waste Management

- Understand the facility siting process and how you can play a part.
- Promote the best management practices to help facilities in your community protect your health and the environment.
- Use the exhaustive supply of resources and references concerning: waste characterization, chemical specifics/impacts, pollution prevention, siting, design, operation, monitoring, corrective action, and facility closure.

Protecting

Land • Ground Water •
Surface Water • Air



Building Partnerships

- State Staff
- Facility & Environmental Managers
- Concerned Citizens

Visit our Web site for downloadable program and additional information.

www.epa.gov/industrialwaste