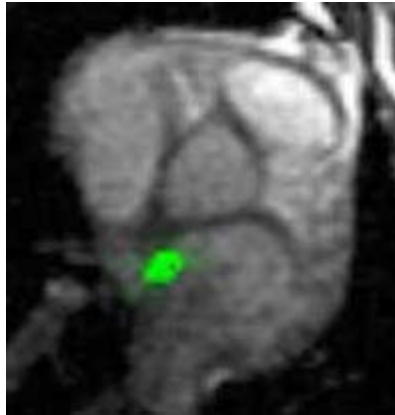


As part of AHA 2007 Scientific Sessions,
Orlando, FL
Orange County Convention Center, Room W312

Tuesday November 6, 2007

5:15—6:45 pm

AHA / NHLBI 6th Annual Workshop on Cardiovascular Interventional MRI



Real-time MRI now permits invasive cardiovascular procedures using commercial systems. Real-time MRI will enable a broad range of novel mechanical and biological treatments for cardiovascular disease.

This workshop is intended to introduce new entrants to the field and to discuss recent advances.

Open to all AHA Scientific Sessions registrants, look under “Clinical Sessions, Cardiovascular Seminars, CVS.62, Tuesday November 6, 5:15pm”

**Orange County Convention Center,
Room W312**

Session Co-Chairs

Robert J. Lederman, Cardiovascular Branch, NHLBI
Elliot R. McVeigh, Biomedical Engineering,
Johns Hopkins University

Program

- 17:15 Welcome
Session Co-Chairs
- 17:20 Prospects & Technical Requirements
Elliot R. McVeigh
Johns Hopkins University, Baltimore, MD
- 17:35 MRI-Guided Vascular Interventions I
Alexander J. Dick
Sunnybrook Hospital, Toronto, ON
- 17:50 MRI-Guided Vascular Interventions II
Aravind Arepally
Johns Hopkins University, Baltimore, MD
- 18:05 MRI-Guided Cardiac Electrophysiology
Henry Halperin
Johns Hopkins University, Baltimore, MD
- 18:20 MRI-Guided Pediatric Interventions
Reza Razavi
King's College, London, UK
- 18:35 Question & Answers
Panelists

Department of Health and Human Services
National Institutes of Health
National Heart Lung and Blood Institute
Building 10, Room 2c713, MSC 1538
Bethesda, MD, 20892-1538

Phone: 301-402-6769
Email: imri-workshop@nih.gov

