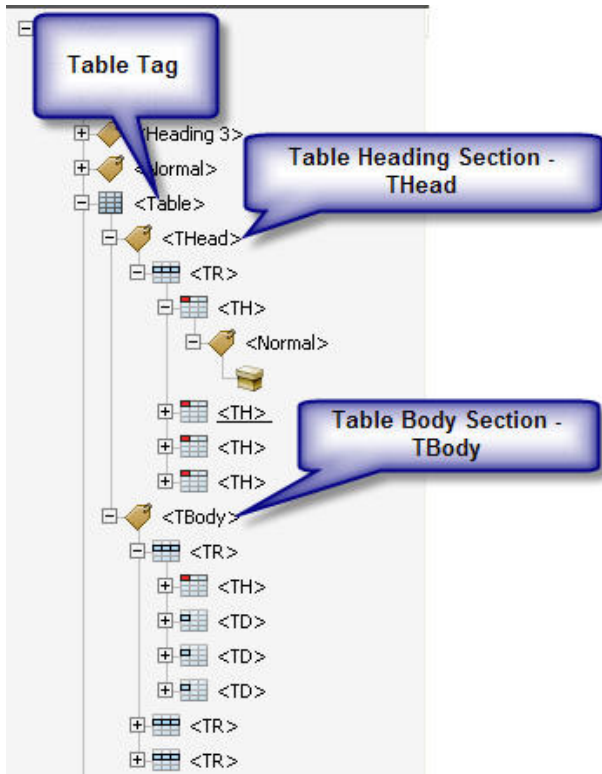




# Editing PDF Table Tags

A well-constructed table will have tagged elements similar to the table shown below.



## Adding Table Tags

In some cases, the THead tag is not created in the PDF.

The example below shows a table missing <THead> and <TH> elements.

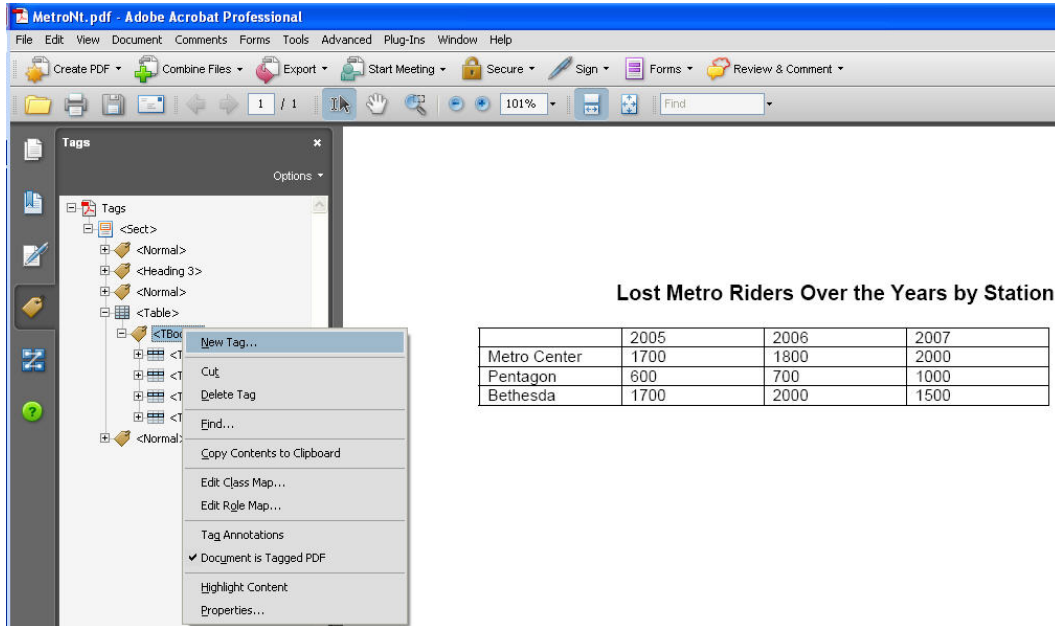
The screenshot shows a PDF viewer interface. On the left, a "Tags" panel shows a tree view where the <TBody> tag is selected. On the right, a table titled "Lost Metro Riders Over the Years by Station" is displayed. The table has four columns: Station, 2005, 2006, and 2007. The rows are Metro Center, Pentagon, and Bethesda.

	2005	2006	2007
Metro Center	1700	1800	2000
Pentagon	600	700	1000
Bethesda	1700	2000	1500

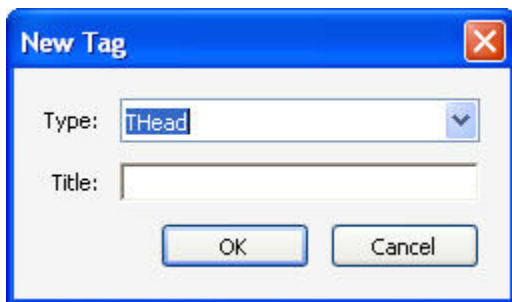
To insert <THead>:

# Editing PDF Table Tags

1. Right click on the <TBody> tag.
2. Select "New Tag" from the menu list.

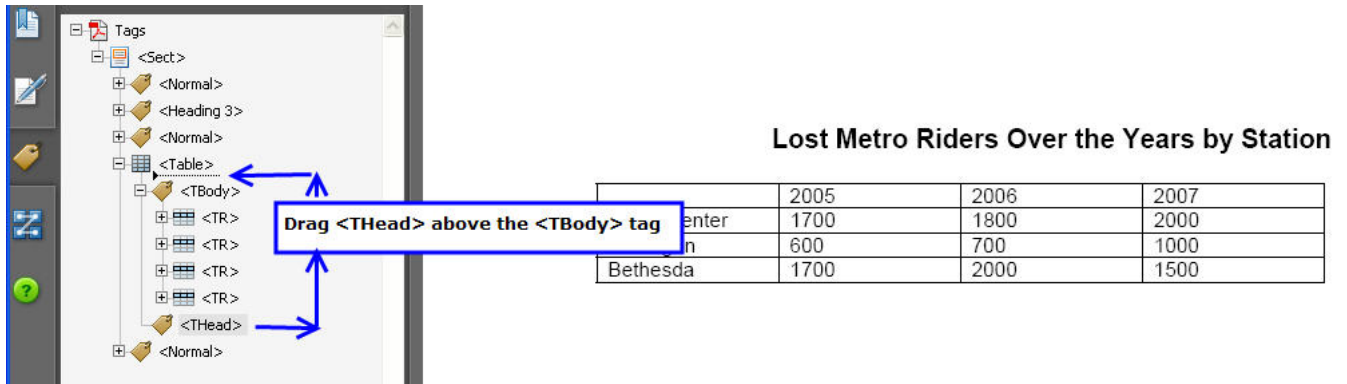


3. A "New Tag" dialog box will be displayed.
4. Enter "THead" into the Type.
5. Click on "OK".



6. The new tag will be inserted below the <TBody> tag;
7. Click and drag the tag above the <TBody> tag. A small arrow will show where you are in the tag tree.

# Editing PDF Table Tags

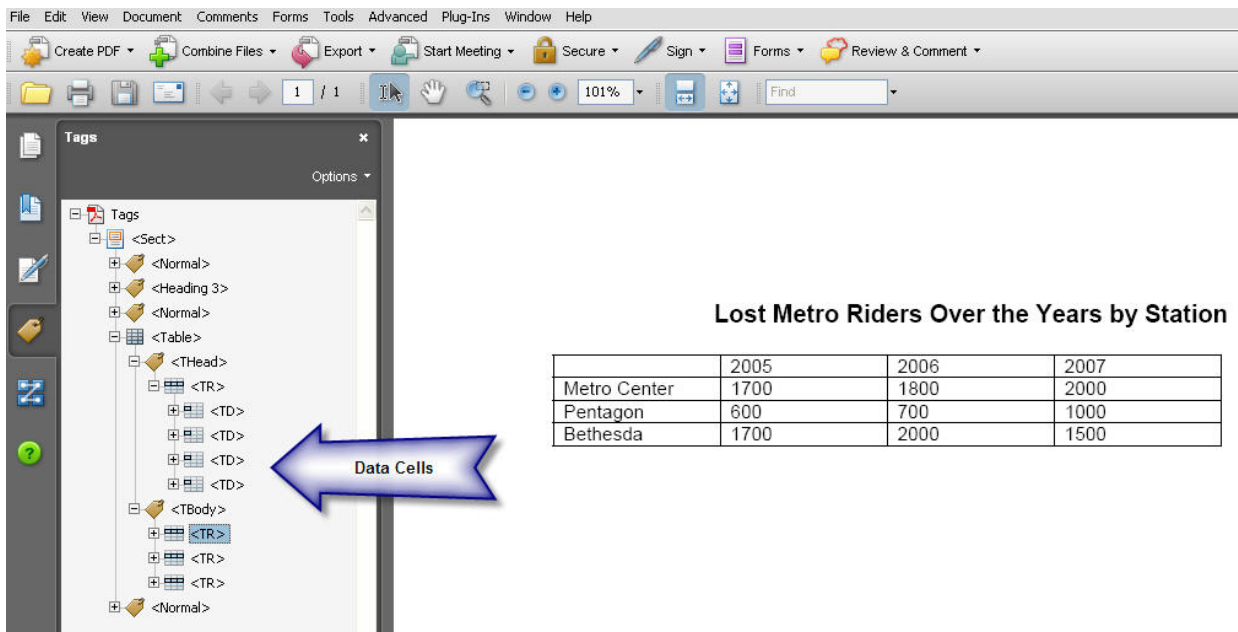


8. Use the same drag and drop process to drop the top row <TR> from the TBody section into the <THead> section.

## Associating Data Cells

The next step is to associate the data cells with the column/row headings.

Expand the <TR> tag to display the data cell tags.

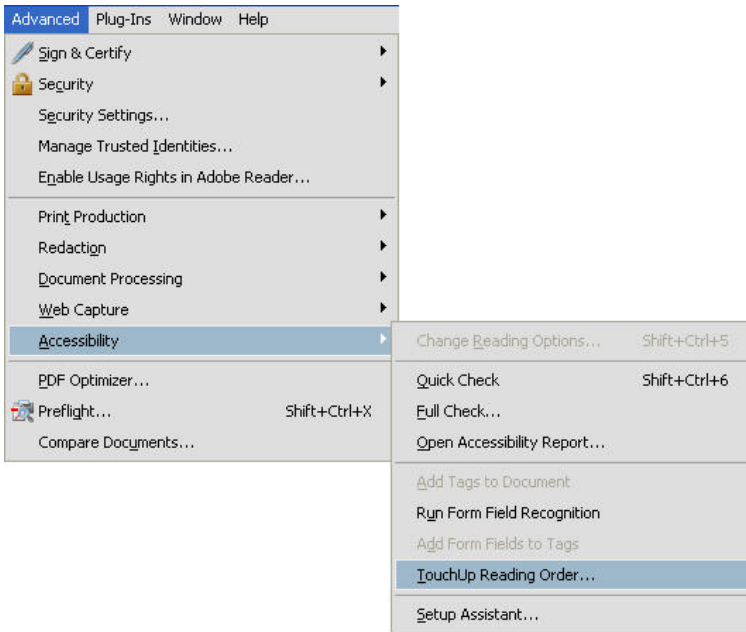


In the first row the last three data cells are headings; these need to be identified as heading cells with the <TH> tag; "Scope" attributes will also need to be added.

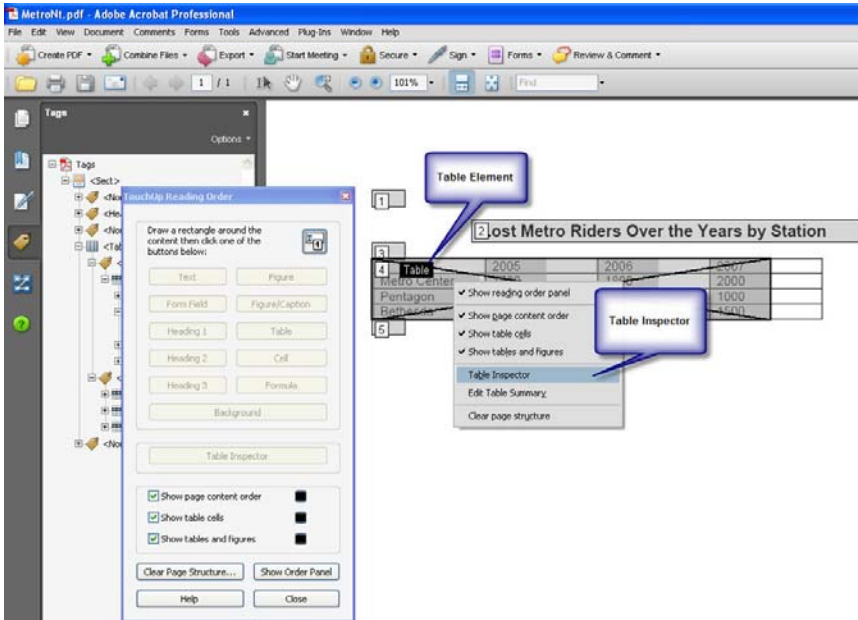
Table data cells are changed with the Table Inspector.

1. To display the Table Inspector click on Advanced
2. Accessibility
3. Touchup Reading Order

# Editing PDF Table Tags



4. Right Click on the Table element and select Table Inspector. The Table Inspector will highlight the table cells.



# Editing PDF Table Tags

## Lost Metro Riders Over the Years by Station

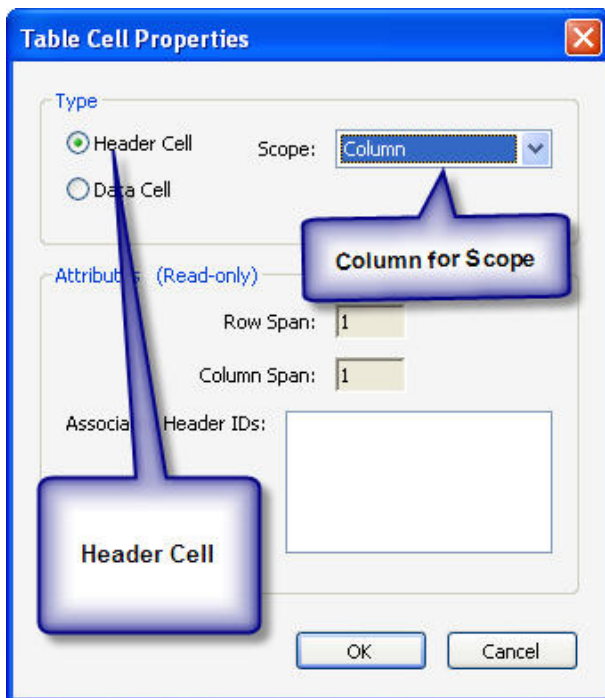
	2005	2006	2007
Metro Center	1700	1800	2000
Pentagon	600	700	1000
Bethesda	1700	2000	1500

5. Right click on a heading cell and select Table Cell Properties  
**Note : Adobe grid lines don't match up to table grid lines**

## Lost Metro Riders Over the Years by Station

	2005	2006	2007
Metro Center	1700	1800	2000
Pentagon	600	700	1000
Bethesda	1700	2000	1500

6. The Cell Properties box will be displayed.
  - a. Select the Header Cell option.
  - b. In this example, the data is in a column; select Column for the Scope.
  - c. Click "OK".



Repeat this for the other cells that should be Header cells.

# Editing PDF Table Tags

Heading cells in rows should have the scope set to Row.

## Lost Metro Riders Over the Years by Station

	2005	2006	2007	
Metro Center	1700	1800	2000	
Pentagon	600	700	1000	
Bethesda	700	800	900	

**Table Cell Properties**

Type

Header Cell      Scope: Row

Data Cell

Attributes (Read-only)

Row Span: 1

Column Span: 1

Associated Header IDs:

OK      Cancel

This concludes the “Editing PDF Table Tags” supplement.