

# Ryan White Programs and Youth

**September 30<sup>th</sup> , 2011**

**Margarita Figueroa Gonzalez, MD, MPH**

**Director, Division of Community Based Programs**

**HIV/AIDS Bureau**

**Health Resources and Services Administration (HRSA)**

**U.S. Department of Health and Human Services (HHS)**

# Vision and Mission of HIV/AIDS Bureau

- **Vision:** The HIV/AIDS Bureau envisions optimal HIV/AIDS care and treatment for all.
- **Mission:** The HIV/AIDS Bureau provides leadership and resources to assure access to and retention in high quality, integrated care and treatment services for vulnerable people living with HIV/AIDS and their families.



# Ryan White Programs

- Heavily Impacted Cities (Part A)
- States and Territories (Part B)
  - AIDS Drug Assistance Programs (ADAP)
- Community Based Organizations
  - HIV Primary Care (Part C)
  - Women, Infants, Children, Youth and Affected Family (Part D)



# Ryan White Programs

- Other Programs (Part F)
  - Special Projects of National Significance (SPNS)
  - AIDS Education and Training Centers (AETC)
  - Community Based Dental Programs
  - Dental Reimbursement



# Ensuring Quality of Care

- Continuous Clinical Quality Improvement
- HIVQUAL
- National Quality Center



# Ryan White Funding

- Primary health care including medications and support services
- Provider training
- Technical Assistance
- Demonstration projects



# Primary Care Services Funded

- Medical evaluation and clinical care
- Oral health care
- Laboratory Testing
- Medications and Adherence Counseling



# Primary Care Services Funded

- Specialty Care
- Substance abuse and mental health screening and treatment
- Nutrition services
- Case Management





# Support Services Funded

- Transportation
- Child Care
- Food Assistance
- Respite Care
- Emergency Housing Assistance
- Legal Services



# Clients Served

- Annually more than 529,000 uninsured and underinsured persons affected by HIV/AIDS
- 73 % racial minorities, 33% women



# Youth Served

- Youth ages 13-24 comprise approximately 7% of Ryan White clients



# Part C: Early Intervention Services

- 352 grantees
- Public and private non-profit community-based organizations
- Focus is on outpatient HIV primary care



# Part C: Early Intervention Services

- Services associated with direct provision of medical evaluation and clinical care, including
  - Oral health
  - Laboratory testing
  - Medications
  - Medical and dental personnel and support personnel
  - Mental health assessment and treatment
  - Substance abuse assessment and treatment



# Part D: Women, Infants, Children, Youth, Families

- Family-centered services
- Medical care for PLWHA only
- Support services that enable clients to access medical care
- Education on clinical research opportunities and outreach



# Part D Youth Programs

- 17 grantees funded to provide services for HIV infected youth
- Goals: Identify HIV positive youth, enroll them into care, and retain them in care
- 16 sites are in large cities.
- 1 program located in Harlingen, TX



# Part F: Special Projects of National Significance (SPNS)

- Funds innovative models of care
- Develops or modifies an existing model of care
- Evaluates the effectiveness of the model
- Disseminates findings to promote the adoption of effective models of care.





# SPNS Initiative of Interest

- Identifying, Linking, Engaging, and Retaining Young Men having Sex with Men (MSM) of Color in HIV Care



# Identifying, Linking, Engaging, and Retaining Young MSM of Color in HIV Care

- Innovative service models designed to reach HIV-infected young MSM not engaged in clinical care and link them to appropriate clinical, supportive and preventive services.
- Support innovative outreach to assist HIV-infected individuals learn their HIV status
- Link HIV-infected persons to primary care services
- Prevention with positives



# Outreach Methods: Young MSM

- Venue-based outreach
- HIV testing vans
- Youth-focused materials
- Chat rooms and social network sites
- Community drop-in centers



HIV/AIDS Bureau



# Outreach Methods: Young MSM

- **Social and sexual networks**
- **Community-wide HIV testing initiatives**
- **Use of peer or near-peer outreach workers**
- **Health care and youth-focused service system “inreach,” networking with health care providers**



# Treatment Interventions and Services

- **Aware of and embraced youth culture**
- **Created youth-friendly physical site and staff**
- **Offered separate youth-designated waiting rooms**
- **Used multidisciplinary staffing model**
- **Employed clinicians expert in treatment of adolescent medicine AND HIV**
- **Created one-stop clinical and psychosocial support services**



# Treatment Interventions and Services

- Provided transportation and accompanied clients to their first medical appointment
- Met clients where they feel comfortable, emphasized privacy and respect, and maintained consistent contact
- Used motivational interviewing to engage clients
- Effectively and creatively addressed treatment adherence and medication education



# Treatment Interventions and Services

- Peers or near-peers served as system navigators
- Decreased wait time for appointments
- Flexible scheduling- expect appointments to be missed and rescheduled
- Addressed the legal issues faced by HIV+ youth
- Anticipated and addressed loss to follow-up



# Lessons Learned: Youth

- Recognize and address the struggle for daily survival among Young MSM
- Create a friendly, safe, youth-centered space, with separate youth waiting rooms
- A youth-centered model differs from an adult model





# Other critical elements in designing programs for YMSM of color

- Establish strong care teams with clear roles and responsibilities among team members
- Training in adolescent development, motivational interviewing, and mental health and addiction screening are important
- Awareness of youth culture
- Adopt new technologies, such as texting
- Assign experienced social workers to YMSM of color



■ Develop community resources



# Special Supplement

- The YMSM of Color Initiative Special Supplement was published last August in “AIDS Patient Care and STDs”.



# Engaging Youth in Planning and program implementation

- Peer counselors/patient navigator
- Peer educators
- Consumer Advisory Group
- Quality management activities (Cross Part Collaborative)



# Challenges

- Persistent stigma
- “Cultural competency” within the healthcare system
- Complex disease management issues
- Co-morbidities (mental illness, substance abuse)



# Challenges

- Increased demand for services with few new or declining resources
- Rising costs of care and growing prevalence of HIV
- Expanding access to medication at the lowest possible price
- Prioritizing core medical services



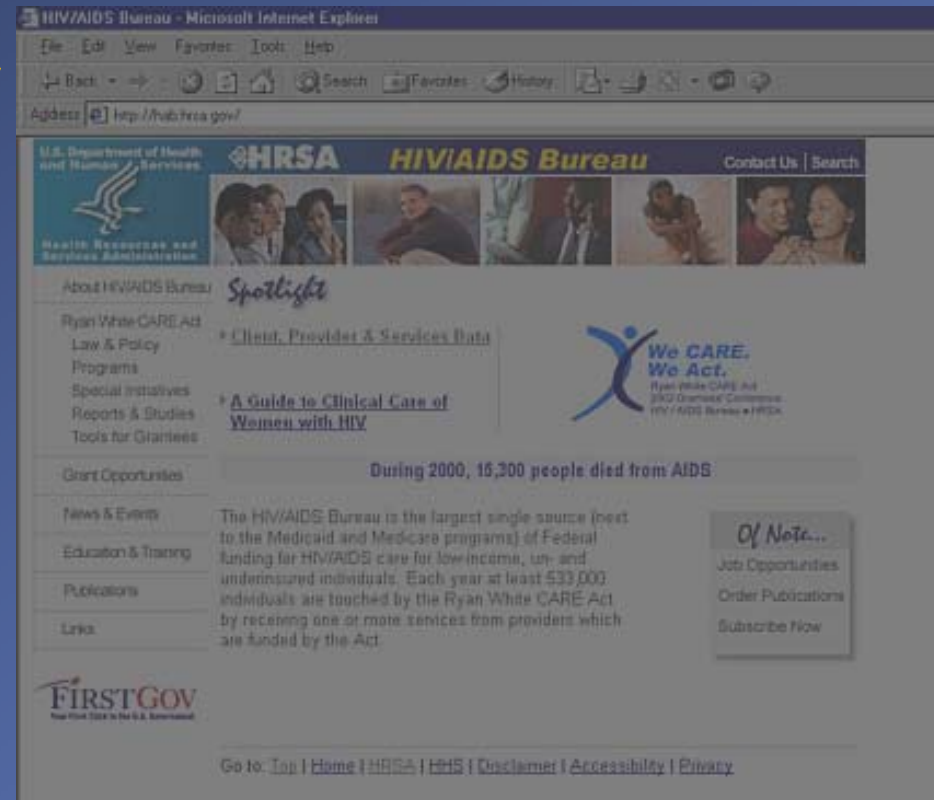
# Challenges

- Fair and equitable distribution of resources
- Retaining patients in care
- Transitioning HIV + Youth from adolescent to adult care
- Retaining/recruiting knowledgeable staff
- Ensuring sound fiscal management of grants and fiscal viabilities of grantees and funded providers



# HIV/AIDS Bureau Website

■ <http://hab.hrsa.gov/>



Margarita Figueroa Gonzalez, MD, MPH  
Director, Division of Community Based Programs  
HIV/AIDS Bureau  
Health Resources and Services Administration  
5600 Fishers Lane, Mail Stop 7A-30  
Rockville, MD 20857  
[mfigueroa@hrsa.gov](mailto:mfigueroa@hrsa.gov).

