

Table XX-1a
CANCER OF THE ORAL CAVITY AND PHARYNX (Invasive)

TRENDS IN SEER INCIDENCE^a AND U.S. MORTALITY^b USING THE JOINTPOINT REGRESSION PROGRAM, 1975-2005
WITH UP TO THREE JOINTPOINTS BY RACE AND SEX

		Joinpoint Trend 1		Joinpoint Trend 2		Joinpoint Trend 3		Joinpoint Trend 4		AAPC ^c	
		Years	APC	Years	APC	Years	APC	Years	APC	1996-2005	2001-2005
<u>SEER Cancer Incidence^a</u>											
All Races	Both Sexes	1975-1981	0.7	1981-2005	-1.2*					-1.2*	-1.2*
All Races	Male	1975-1983	-0.2	1983-2005	-1.4*					-1.4*	-1.4*
All Races	Female	1975-1980	2.6*	1980-2005	-1.0*					-1.0*	-1.0*
White	Both Sexes	1975-2005	-0.9*							-0.9*	-0.9*
White	Male	1975-2005	-1.2*							-1.2*	-1.2*
White	Female	1975-1981	2.1*	1981-2005	-1.0*					-1.0*	-1.0*
Black	Both Sexes	1975-1984	2.4*	1984-2005	-2.5*					-2.5*	-2.5*
Black	Male	1975-1987	1.9*	1987-2005	-3.3*					-3.3*	-3.3*
Black	Female	1975-2005	-1.3*							-1.3*	-1.3*
<u>SEER Delay-Adjusted Incidence^a</u>											
All Races	Both Sexes	1975-1981	0.7	1981-2005	-1.1*					-1.1*	-1.1*
All Races	Male	1975-2005	-1.2*							-1.2*	-1.2*
All Races	Female	1975-1980	2.6	1980-2005	-0.9*					-0.9*	-0.9*
White	Both Sexes	1975-2005	-0.8*							-0.8*	-0.8*
White	Male	1975-2005	-1.1*							-1.1*	-1.1*
White	Female	1975-1981	2.0	1981-2005	-0.9*					-0.9*	-0.9*
Black	Both Sexes	1975-1984	2.4*	1984-2005	-2.5*					-2.5*	-2.5*
Black	Male	1975-1987	1.9*	1987-2005	-3.2*					-3.2*	-3.2*
Black	Female	1975-2005	-1.2*							-1.2*	-1.2*
<u>U.S. Cancer Mortality^b</u>											
All Races	Both Sexes	1975-1979	-0.5	1979-1993	-1.7*	1993-2000	-2.7*	2000-2005	-1.3*	-1.9*	-1.3*
All Races	Male	1975-1980	-0.9	1980-2005	-2.2*					-2.2*	-2.2*
All Races	Female	1975-1990	-0.9*	1990-2005	-2.4*					-2.4*	-2.4*
White	Both Sexes	1975-2005	-1.9*							-1.9*	-1.9*
White	Male	1975-2005	-2.1*							-2.1*	-2.1*
White	Female	1975-1990	-1.0*	1990-2005	-2.2*					-2.2*	-2.2*
Black	Both Sexes	1975-1980	3.3*	1980-1993	-1.5*	1993-2005	-3.9*			-3.9*	-3.9*
Black	Male	1975-1980	3.8*	1980-1993	-1.4*	1993-2002	-4.6*	2002-2005	1.2	-2.7*	-0.3
Black	Female	1975-1994	-0.6*	1994-2005	-4.7*					-4.7*	-4.7*

Joinpoint Regression Program Version 3.3.1, April 2008, National Cancer Institute. (<http://srab.cancer.gov/joinpoint/>).

The APC is the Annual Percent Change based on rates age-adjusted to the 2000 US Std Population (19 age groups - Census P25-1130). Trends are from the SEER 9 areas (San Francisco, Connecticut, Detroit, Hawaii, Iowa, New Mexico, Seattle, Utah, and Atlanta).

Trends are from US Mortality Files, National Center for Health Statistics, Centers for Disease Control and Prevention.

The AAPC is the Average Annual Percent Change and is based on the APCs calculated by Joinpoint over the time range of 1975-2005.

The APC/AAPC is significantly different from zero ($p < .05$).

a
b
c
*

Table XX-1b
 CANCER OF THE ORAL CAVITY AND PHARYNX FOR SELECTED SUBSITES (Invasive)

TRENDS IN SEER INCIDENCE^a USING THE JOINTPOINT REGRESSION PROGRAM, 1975-2005
 WITH UP TO THREE JOINTPOINTS BY RACE AND SEX

		Jointpoint Trend 1		Jointpoint Trend 2		Jointpoint Trend 3		Jointpoint Trend 4		AAPC ^b	
		Years	APC	Years	APC	Years	APC	Years	APC	1996-2005	2001-2005
<u>Tongue Cancer</u>											
All Races	Both Sexes	1975-1981	2.6	1981-1998	0.0	1998-2005	2.2*			1.7*	2.2*
All Races	Male	1975-2005	0.6*							0.6*	0.6*
All Races	Female	1975-1979	6.5	1979-2005	0.1					0.1	0.1
White	Male	1975-1999	0.5*	1999-2005	3.6*					2.6*	3.6*
White	Female	1975-2005	0.4*							0.4*	0.4*
Black	Male	1975-1989	1.4	1989-2005	-3.1*					-3.1*	-3.1*
Black	Female	1975-2005	-1.1*							-1.1*	-1.1*
<u>Floor of Mouth, Gum and Other Mouth Cancer</u>											
All Races	Both Sexes	1975-1983	0.9	1983-2005	-2.5*					-2.5*	-2.5*
All Races	Male	1975-1984	0.3	1984-2005	-3.0*					-3.0*	-3.0*
All Races	Female	1975-1987	0.1	1987-2005	-2.2*					-2.2*	-2.2*
White	Male	1975-1984	-0.1	1984-2005	-2.8*					-2.8*	-2.8*
White	Female	1975-1986	0.6	1986-2005	-2.2*					-2.2*	-2.2*
Black	Male	1975-1977	54.6*	1977-1998	-2.3*	1998-2005	-9.2*			-7.7*	-9.2*
Black	Female	1975-2005	-1.7*							-1.7*	-1.7*
<u>Oropharynx and Tonsil Cancer</u>											
All Races	Both Sexes	1975-1999	0.0	1999-2005	2.4*					1.6*	2.4*
All Races	Male	1975-2005	0.8*							0.8*	0.8*
All Races	Female	1975-2005	-1.4*							-1.4*	-1.4*
White	Male	1975-1995	0.2	1995-2005	3.0*					3.0*	3.0*
White	Female	1975-2005	-1.2*							-1.2*	-1.2*
Black	Male	1975-2005	-0.6							-0.6	-0.6
Black	Female	1975-2005	-1.6*							-1.6*	-1.6*
<u>Salivary Gland Cancer</u>											
All Races	Both Sexes	1975-2005	0.5*							0.5*	0.5*
All Races	Male	1975-2005	0.6*							0.6*	0.6*
All Races	Female	1975-2005	0.4*							0.4*	0.4*
White	Male	1975-2005	0.6*							0.6*	0.6*
White	Female	1975-2005	0.4							0.4*	0.4*
Black	Male	1975-2000	2.6*	2000-2005	-13.7					-6.8	-13.7
Black	Female	1975-2005	0.4							0.4	0.4
<u>Lip Cancer</u>											
All Races	Both Sexes	1975-1998	-3.2*	1998-2005	-6.2*					-5.5*	-6.2*
All Races	Male	1975-1996	-3.7*	1996-2005	-6.6*					-6.6*	-6.6*
All Races	Female	1975-2005	-0.5							-0.5	-0.5
White	Male	1975-1996	-3.4*	1996-2005	-6.7*					-6.7*	-6.7*
White	Female	1975-2001	0.1	2001-2005	-7.9					-3.5	-7.9
Black	Male		-								
Black	Female		-								

Jointpoint Regression Program Version 3.3, April 2008, National Cancer Institute. (<http://srab.cancer.gov/joinpoint/>).
 The APC is the Annual Percent Change based on rates age-adjusted to the 2000 US Std Population (19 age groups - Census P25-1130).
 Trends are from the SEER 9 areas (San Francisco, Connecticut, Detroit, Hawaii, Iowa, New Mexico, Seattle, Utah, and Atlanta).
 The AAPC is the Average Annual Percent Change and is based on the APCs calculated by Jointpoint over the time range of 1975-2005.
 The APC/AAPC is significantly different from zero (p<.05).
 Trend could not be calculated. At least one diagnosis year had a zero case count.

Table XX-1c
CANCER OF THE ORAL CAVITY AND PHARYNX FOR SELECTED SUBSITES (Invasive)

TRENDS IN SEER INCIDENCE^a USING THE JOINTPOINT REGRESSION PROGRAM, 1975-2005
WITH UP TO THREE JOINTPOINTS BY RACE AND SEX

		Joinpoint Trend 1		Joinpoint Trend 2		Joinpoint Trend 3		Joinpoint Trend 4		AAPC ^b	
		Years	APC	Years	APC	Years	APC	Years	APC	1996-2005	2001-2005
<u>Tongue Cancer</u>											
All Races	Both Sexes	1975-1981	2.6	1981-1998	0.0	1998-2005	2.2*			1.7*	2.2*
All Races	Male	1975-2005	0.6*							0.6*	0.6*
All Races	Female	1975-1979	6.5	1979-2005	0.1					0.1	0.1
White	Male	1975-1999	0.5*	1999-2005	3.6*					2.6*	3.6*
White	Female	1975-2005	0.4*							0.4*	0.4*
Black	Male	1975-1989	1.4	1989-2005	-3.1*					-3.1*	-3.1*
Black	Female	1975-2005	-1.1*							-1.1*	-1.1*
<u>Floor of Mouth, Gum and Other Mouth Cancer</u>											
All Races	Both Sexes	1975-1983	0.9	1983-2005	-2.5*					-2.5*	-2.5*
All Races	Male	1975-1984	0.3	1984-2005	-3.0*					-3.0*	-3.0*
All Races	Female	1975-1987	0.1	1987-2005	-2.2*					-2.2*	-2.2*
White	Male	1975-1984	-0.1	1984-2005	-2.8*					-2.8*	-2.8*
White	Female	1975-1986	0.6	1986-2005	-2.2*					-2.2*	-2.2*
Black	Male	1975-1977	54.6*	1977-1998	-2.3*	1998-2005	-9.2*			-7.7*	-9.2*
Black	Female	1975-2005	-1.7*							-1.7*	-1.7*
<u>Oropharynx and Tonsil Cancer</u>											
All Races	Both Sexes	1975-1999	0.0	1999-2005	2.4*					1.6*	2.4*
All Races	Male	1975-2005	0.8*							0.8*	0.8*
All Races	Female	1975-2005	-1.4*							-1.4*	-1.4*
White	Male	1975-1995	0.2	1995-2005	3.0*					3.0*	3.0*
White	Female	1975-2005	-1.2*							-1.2*	-1.2*
Black	Male	1975-2005	-0.6							-0.6	-0.6
Black	Female	1975-2005	-1.6*							-1.6*	-1.6*
<u>Salivary Gland Cancer</u>											
All Races	Both Sexes	1975-2005	0.5*							0.5*	0.5*
All Races	Male	1975-2005	0.6*							0.6*	0.6*
All Races	Female	1975-2005	0.4*							0.4*	0.4*
White	Male	1975-2005	0.6*							0.6*	0.6*
White	Female	1975-2005	0.4							0.4*	0.4*
Black	Male	1975-2000	2.6*	2000-2005	-13.7					-6.8	-13.7
Black	Female	1975-2005	0.4							0.4	0.4
<u>Lip Cancer</u>											
All Races	Both Sexes	1975-1998	-3.2*	1998-2005	-6.2*					-5.5*	-6.2*
All Races	Male	1975-1996	-3.7*	1996-2005	-6.6*					-6.6*	-6.6*
All Races	Female	1975-2005	-0.5							-0.5	-0.5
White	Male	1975-1996	-3.4*	1996-2005	-6.7*					-6.7*	-6.7*
White	Female	1975-2001	0.1	2001-2005	-7.9					-3.5	-7.9
Black	Male		-								
Black	Female		-								

Joinpoint Regression Program Version 3.3.1, April 2008, National Cancer Institute. (<http://srab.cancer.gov/joinpoint/>).

The APC is the Annual Percent Change based on rates age-adjusted to the 2000 US Std Population (19 age groups - Census P25-1130). Trends are from the SEER 9 areas (San Francisco, Connecticut, Detroit, Hawaii, Iowa, New Mexico, Seattle, Utah, and Atlanta).

The AAPC is the Average Annual Percent Change and is based on the APCs calculated by Joinpoint over the time range of 1975-2005.

The APC/AAPC is significantly different from zero (p<.05).

Trend could not be calculated. At least one diagnosis year had a zero case count.

Table XX-1d
CANCER OF THE ORAL CAVITY AND PHARYNX FOR SELECTED SUBSITES (Invasive)
TRENDS IN SEER INCIDENCE^a USING THE JOINTPOINT REGRESSION PROGRAM, 1975-2005
WITH UP TO FOUR JOINTPOINTS BY RACE AND SEX

	Jointpoint Trend 1		Jointpoint Trend 2		Jointpoint Trend 3		Jointpoint Trend 4		Jointpoint Trend 5		AAPC ^c 2001-2005
	Years	APC	Years	APC	Years	APC	Years	APC	Years	APC	
<u>Tongue Cancer</u>											
All RacesBoth Sexes	1975-1999	0.4*	1999-2005	2.1							2.1
All RacesMale	1975-2005	0.6*									0.6*
All RacesFemale	1975-2005	0.3*									0.3*
White Male	1975-1999	0.5*	1999-2005	3.6*							3.6*
White Female	1975-2005	0.4*									0.4*
Black Male	1975-1989	1.4	1989-2005	-3.1*							-3.1*
Black Female	1975-2005	-1.1*									-1.1*
<u>Floor of Mouth, Gum and Other Mouth Cancer</u>											
All RacesBoth Sexes	1975-1983	0.9	1983-2005	-2.5*							-2.5*
All RacesMale	1975-1984	0.3	1984-2005	-3.0*							-3.0*
All RacesFemale	1975-1987	0.1	1987-2005	-2.2*							-2.2*
White Male	1975-1984	-0.1	1984-2005	-2.8*							-2.8*
White Female	1975-1986	0.6	1986-2005	-2.2*							-2.2*
Black Male	1975-1977	54.6*	1977-1998	-2.3*	1998-2005	-9.2*					-9.2*
Black Female	1975-2005	-1.7*									-1.7*
<u>Oropharynx and Tonsil Cancer</u>											
All RacesBoth Sexes	1975-1999	0.0	1999-2005	2.4*							2.4*
All RacesMale	1975-2005	0.8*									0.8*
All RacesFemale	1975-2005	-1.4*									-1.4*
White Male	1975-1995	0.2	1995-2005	3.0*							3.0*
White Female	1975-2005	-1.2*									-1.2*
Black Male	1975-2005	-0.6									-0.6
Black Female	1975-2005	-1.6*									-1.6*
<u>Salivary Gland Cancer</u>											
All RacesBoth Sexes	1975-2005	0.5*									0.5*
All RacesMale	1975-2005	0.6*									0.6*
All RacesFemale	1975-2005	0.4*									0.4*
White Male	1975-2005	0.6*									0.6*
White Female	1975-2005	0.4									0.4*
Black Male	1975-2000	2.6*	2000-2005	-13.7							-13.7
Black Female	1975-2005	0.4									0.4
<u>Lip Cancer</u>											
All RacesBoth Sexes	1975-1998	-3.2*	1998-2005	-6.2*							-6.2*
All RacesMale	1975-1996	-3.7*	1996-2005	-6.6*							-6.6*
All RacesFemale	1975-2005	-0.5									-0.5
White Male	1975-1996	-3.4*	1996-2005	-6.7*							-6.7*
White Female	1975-2001	0.1	2001-2005	-7.9							-7.9
Black Male	-	-									-
Black Female	-	-									-

Jointpoint Regression Program Version 3.3.1, April 2008, National Cancer Institute. (<http://srab.cancer.gov/jointpoint/>).

The APC is the Annual Percent Change based on rates age-adjusted to the 2000 US Std Population (19 age groups - Census P25-1130). Trends are from the SEER 9 areas (San Francisco, Connecticut, Detroit, Hawaii, Iowa, New Mexico, Seattle, Utah, and Atlanta).

The AAPC is the Average Annual Percent Change and is based on the APCs calculated by Jointpoint over the time range of 1975-2005.

The APC/AAPC is significantly different from zero ($p < .05$).

- Trend could not be calculated. At least one diagnosis year had a zero case count.

a
b
*
-

Table XX-2
CANCER OF THE ORAL CAVITY AND PHARYNX (Invasive)

AGE ADJUSTED SEER INCIDENCE^a RATES BY YEAR, RACE AND SEX

	<u>All Races</u>			<u>Whites</u>			<u>Blacks</u>		
	<u>Total</u>	<u>Males</u>	<u>Females</u>	<u>Total</u>	<u>Males</u>	<u>Females</u>	<u>Total</u>	<u>Males</u>	<u>Females</u>
<u>AGE-ADJUSTED RATES</u>									
<u>YEAR OF DIAGNOSIS:</u>									
1975	13.2	21.2	7.1	13.3	21.7	6.9	13.4	20.2	8.2
1976	13.3	21.0	7.4	13.2	21.0	7.4	15.2	23.8	8.4
1977	12.7	20.1	7.0	12.6	19.9	7.0	14.4	23.9	6.6
1978	13.4	20.9	7.7	13.2	20.8	7.6	15.8	26.0	8.1
1979	14.0	22.0	8.0	13.7	21.6	7.7	18.4	28.2	10.6
1980	13.3	20.3	7.9	13.0	20.0	7.6	16.8	25.4	9.6
1981	13.6	20.8	7.9	13.4	20.5	7.9	16.7	28.2	7.5
1982	13.3	20.3	7.9	13.1	19.9	7.9	17.1	27.4	8.9
1983	13.3	21.2	7.2	13.3	21.2	7.3	16.1	26.1	8.3
1984	13.5	20.8	7.9	13.0	20.1	7.6	18.9	30.0	10.1
1985	13.3	19.8	8.2	13.3	19.6	8.4	16.0	25.7	8.5
1986	12.5	19.1	7.2	12.4	18.9	7.3	16.2	28.1	7.0
1987	13.2	20.5	7.5	13.1	20.2	7.7	16.8	30.0	7.0
1988	12.1	18.1	7.3	11.8	17.7	7.1	16.4	25.6	9.1
1989	12.1	18.3	7.3	11.8	17.7	7.3	15.7	27.2	7.0
1990	12.6	19.4	7.3	12.4	18.8	7.4	16.0	27.8	6.9
1991	12.2	18.3	7.2	12.1	18.1	7.3	14.4	23.7	7.3
1992	12.0	18.3	6.9	11.8	18.0	6.9	14.8	25.1	6.9
1993	12.4	18.7	7.3	12.2	18.4	7.2	15.5	24.9	8.1
1994	11.7	17.7	6.8	11.4	16.8	6.9	15.7	26.8	7.1
1995	11.5	16.9	7.2	11.5	16.7	7.3	13.5	22.5	6.7
1996	11.8	17.7	7.0	11.4	17.2	6.9	14.9	24.4	7.5
1997	11.5	17.3	6.8	11.5	17.1	6.9	11.4	18.2	6.2
1998	11.2	16.6	6.7	11.2	16.4	6.9	13.0	22.4	6.2
1999	10.5	15.5	6.4	10.4	15.4	6.3	11.7	19.7	5.8
2000	10.7	16.0	6.3	10.6	15.6	6.4	11.6	20.6	4.8
2001	10.8	15.4	6.9	10.8	15.4	6.9	11.9	18.6	6.9
2002	11.0	16.2	6.7	11.2	16.4	6.7	11.0	16.8	6.4
2003	10.3	15.3	6.1	10.3	15.3	5.9	11.5	16.6	7.5
2004	10.6	15.7	6.2	10.8	15.9	6.2	9.9	15.6	5.7
2005	10.4	15.1	6.3	10.4	15.4	6.1	10.6	16.1	6.7
1975-2005	12.1	18.2	7.1	12.0	18.1	7.1	14.0	22.7	7.2

^a SEER 9 areas (San Francisco, Connecticut, Detroit, Hawaii, Iowa, New Mexico, Seattle, Utah, and Atlanta). Rates are per 100,000 and are age-adjusted to the 2000 US Std Population (19 age groups - Census P25-1130).

- Statistic not shown. Rate based on less than 16 cases for the time interval.

Table XX-3
CANCER OF THE ORAL CAVITY AND PHARYNX (Invasive)
AGE-ADJUSTED U.S. DEATH^a RATES BY YEAR, RACE AND SEX

	<u>All Races</u>			<u>Whites</u>			<u>Blacks</u>		
	<u>Total</u>	<u>Males</u>	<u>Females</u>	<u>Total</u>	<u>Males</u>	<u>Females</u>	<u>Total</u>	<u>Males</u>	<u>Females</u>
<u>AGE-ADJUSTED RATES</u>									
<u>YEAR OF DEATH:</u>									
1975	4.3	6.9	2.3	4.1	6.6	2.3	5.8	9.9	2.5
1976	4.2	6.9	2.2	4.0	6.6	2.2	6.1	10.6	2.6
1977	4.3	7.0	2.3	4.1	6.7	2.2	6.2	10.9	2.6
1978	4.2	6.8	2.3	4.0	6.4	2.2	6.1	10.7	2.7
1979	4.2	6.7	2.4	4.0	6.3	2.3	6.6	11.5	3.0
1980	4.2	6.7	2.3	3.9	6.1	2.2	7.0	12.5	2.8
1981	4.1	6.5	2.2	3.8	6.0	2.2	6.5	11.4	2.8
1982	4.0	6.5	2.2	3.7	6.0	2.1	6.6	11.5	2.9
1983	3.9	6.3	2.2	3.6	5.7	2.1	6.6	11.8	2.8
1984	3.9	6.2	2.2	3.6	5.6	2.1	6.4	11.7	2.4
1985	3.8	5.9	2.1	3.5	5.4	2.0	6.2	11.0	2.6
1986	3.7	5.8	2.2	3.4	5.3	2.1	6.5	11.4	2.9
1987	3.5	5.5	2.1	3.3	5.0	2.0	5.7	10.0	2.5
1988	3.6	5.6	2.0	3.3	5.1	2.0	6.0	10.7	2.5
1989	3.5	5.3	2.1	3.2	4.8	2.0	5.9	10.4	2.6
1990	3.6	5.6	2.0	3.3	5.1	2.0	6.1	11.0	2.5
1991	3.5	5.3	2.0	3.2	4.9	2.0	5.8	10.1	2.7
1992	3.3	5.1	1.9	3.1	4.7	1.9	5.6	10.0	2.3
1993	3.3	5.2	1.9	3.1	4.7	1.8	5.7	10.1	2.4
1994	3.2	4.8	1.8	2.9	4.4	1.8	5.3	9.3	2.4
1995	3.2	4.9	1.8	2.9	4.4	1.8	5.4	9.3	2.5
1996	3.0	4.6	1.8	2.8	4.2	1.7	4.9	8.7	2.1
1997	3.0	4.5	1.8	2.8	4.2	1.7	4.7	8.1	2.2
1998	3.0	4.5	1.7	2.8	4.2	1.7	4.5	7.9	2.1
1999	2.7	4.1	1.6	2.5	3.8	1.5	4.4	7.5	2.1
2000	2.7	4.1	1.6	2.5	3.7	1.6	4.1	7.3	1.8
2001	2.7	4.1	1.6	2.6	3.9	1.5	3.9	6.7	1.8
2002	2.7	4.1	1.5	2.6	3.9	1.5	3.7	6.3	1.7
2003	2.6	4.1	1.5	2.5	3.8	1.4	3.9	6.9	1.6
2004	2.6	4.0	1.5	2.5	3.7	1.5	3.8	6.9	1.6
2005	2.5	3.8	1.4	2.4	3.6	1.4	3.5	6.5	1.4
1975-2005	3.4	5.2	1.9	3.2	4.9	1.9	5.2	9.2	2.3

^a US Mortality Files, National Center for Health Statistics, Centers for Disease Control and Prevention. Rates are per 100,000 and are age-adjusted to the 2000 US Std Population (19 age groups - Census P25-1130).

- Statistic not shown. Rate based on less than 16 cases for the time interval.

Table XX-4a
 CANCER OF THE ORAL CAVITY AND PHARYNX (Invasive)

SEER INCIDENCE^a AND U.S. DEATH^b RATES, AGE-ADJUSTED AND AGE-SPECIFIC RATES, BY RACE AND SEX

	All Races			Whites			Blacks		
	Total	Males	Females	Total	Males	Females	Total	Males	Females
<u>SEER INCIDENCE</u>									
<u>AGE AT DIAGNOSIS</u>									
AGE-ADJUSTED RATES, 2001-2005									
All ages	10.4	15.5	6.1	10.6	15.7	6.1	10.8	17.2	5.9
Under 65	6.3	9.3	3.4	6.2	9.3	3.2	7.3	11.4	3.9
65 and over	39.2	58.1	25.3	40.4	60.0	26.1	35.0	57.7	20.0
All ages(IARC world std) ^c	7.4	11.1	4.2	7.5	11.2	4.2	8.0	12.8	4.3
AGE-SPECIFIC RATES, 2001-2005									
<1	-	-	-	-	-	-	-	-	-
1-4	-	-	-	-	-	-	-	-	-
5-9	0.1	-	-	0.1	-	-	-	-	-
10-14	0.3	0.2	0.3	0.2	0.2	0.3	-	-	-
15-19	0.4	0.4	0.4	0.4	0.4	0.3	0.6	-	-
20-24	0.7	0.6	0.8	0.6	0.5	0.7	0.7	-	-
25-29	1.0	0.9	1.1	0.9	0.9	0.9	1.1	-	1.3
30-34	1.7	1.8	1.6	1.6	1.6	1.5	1.7	1.9	1.5
35-39	2.9	3.5	2.2	2.7	3.3	2.0	2.9	3.4	2.5
40-44	5.9	8.5	3.4	5.7	8.2	3.2	6.3	8.6	4.2
45-49	11.7	17.4	6.0	11.4	17.3	5.5	14.3	21.0	8.4
50-54	18.8	29.1	8.9	18.7	29.1	8.5	23.3	36.7	12.0
55-59	25.3	39.8	11.7	25.5	39.8	11.7	30.5	52.9	12.0
60-64	31.8	48.9	16.2	32.6	49.8	16.6	34.2	57.1	15.9
65-69	35.6	53.8	19.8	36.5	55.0	20.1	36.6	59.5	19.3
70-74	40.1	59.6	24.5	41.9	61.2	26.1	38.9	69.9	17.1
75-79	41.2	59.8	28.0	42.8	62.3	28.9	34.4	53.5	22.6
80-84	40.7	59.7	28.9	41.4	61.1	29.1	35.2	59.1	22.2
85+	39.6	59.9	30.3	40.8	63.2	30.7	24.2	34.1	20.2
<u>U.S. MORTALITY</u>									
<u>AGE AT DEATH</u>									
AGE-ADJUSTED RATES, 2001-2005									
All ages	2.6	4.0	1.5	2.5	3.8	1.5	3.7	6.7	1.6
Under 65	1.2	1.9	0.5	1.1	1.7	0.5	2.2	3.9	0.9
65 and over	12.3	18.3	8.0	12.2	17.8	8.2	14.1	25.5	7.0
All ages(IARC world std) ^c	1.7	2.7	0.9	1.6	2.5	0.9	2.7	4.8	1.1
AGE-SPECIFIC RATES, 2001-2005									
<1	-	-	-	-	-	-	-	-	-
1-4	-	-	-	-	-	-	-	-	-
5-9	-	-	-	-	-	-	-	-	-
10-14	0.0	-	-	-	-	-	-	-	-
15-19	0.1	0.1	0.0	0.0	0.1	-	-	-	-
20-24	0.1	0.1	0.1	0.1	0.1	0.1	0.1	-	-
25-29	0.1	0.1	0.1	0.1	0.1	0.0	0.1	-	-
30-34	0.2	0.2	0.1	0.1	0.2	0.1	0.2	0.4	-
35-39	0.3	0.4	0.2	0.3	0.4	0.2	0.7	0.8	0.6
40-44	0.8	1.2	0.5	0.7	1.0	0.4	1.6	2.3	0.9
45-49	2.0	3.1	0.9	1.7	2.6	0.8	4.1	6.9	1.7
50-54	3.6	5.9	1.4	3.2	5.2	1.2	6.8	12.1	2.3
55-59	5.6	9.2	2.2	5.2	8.4	2.1	9.9	18.2	3.1
60-64	7.8	12.4	3.5	7.3	11.4	3.4	13.6	25.1	4.6
65-69	9.3	14.6	4.7	8.8	13.6	4.6	14.4	26.0	5.8
70-74	11.2	16.9	6.6	11.1	16.3	6.8	14.2	26.8	5.7
75-79	12.8	18.9	8.4	12.7	18.5	8.5	13.6	24.1	7.4
80-84	14.4	20.9	10.4	14.4	20.6	10.6	14.5	25.9	8.5
85+	18.2	25.3	15.0	18.6	25.6	15.5	13.8	23.9	9.9

^a SEER 17 areas. Rates are per 100,000 and are age-adjusted to the 2000 US Std Population (19 age groups - Census P25-1130), unless noted.

^b US Mortality Files, National Center for Health Statistics, Centers for Disease Control and Prevention. Rates are per 100,000 and are age-adjusted to the 2000 US Std Population (19 age groups - Census P25-1130), unless noted.

^c Rates are per 100,000 and are age-adjusted to the IARC world standard population.

- Statistic not shown. Rate based on less than 16 cases for the time interval.

Table XX-4b
CANCER OF THE ORAL CAVITY AND PHARYNX BY SUBSITE (Invasive)
SEER INCIDENCE^a STAGE DISTRIBUTION BY SITE,
AGE-ADJUSTED SEER INCIDENCE^a AND U.S. DEATH^b RATES BY AGE, RACE AND SEX

	Site									
	Oral Cavity & Pharynx	Lip	Tongue	Floor of Mouth	Gum & Other Mouth	Oropharynx & Tonsil	Hypophar.	Salivary Gland	Nasophar.	Other Oral Cavity & Pharynx
<u>SEER INCIDENCE</u>										
STAGE DISTRIBUTION, 2001-2005										
Percent of Total ^c										
Localized	34	79	36	40	39	13	14	47	10	16
Regional	49	14	46	51	47	69	64	34	67	48
Distant	12	1	13	5	6	14	18	14	17	12
Unstaged	6	5	4	4	8	4	3	6	6	24
AGE-ADJUSTED RATES, 2001-2005										
AGE AT DIAGNOSIS										
All ages	10.4	0.8	2.8	0.7	1.5	1.8	0.7	1.2	0.7	0.2
Under 65	6.3	0.4	1.8	0.4	0.7	1.4	0.4	0.7	0.5	0.1
65+	39.2	4.0	9.8	2.6	7.1	4.7	3.3	5.1	1.7	0.9
All ages(IARC world std) ^d	7.4	0.5	2.0	0.5	1.0	1.4	0.5	0.8	0.5	0.2
SEX										
Male	15.5	1.4	4.1	1.0	1.8	3.0	1.2	1.6	1.0	0.3
Female	6.1	0.4	1.6	0.4	1.3	0.7	0.3	0.9	0.4	0.1
RACE										
White	10.6	0.9	2.9	0.7	1.5	1.9	0.7	1.2	0.4	0.2
Black	10.8	0.1	2.4	0.8	1.7	2.3	1.2	1.1	0.7	0.4
Other	8.7	0.4	1.9	0.3	1.2	0.8	0.4	1.1	2.5	0.1
<u>U.S. MORTALITY</u>										
AGE-ADJUSTED RATES, 2001-2005										
AGE AT DEATH										
All ages	2.6	0.0	0.6	0.0	0.4	0.4	0.1	0.2	0.2	0.5
Under 65	1.2	0.0	0.3	0.0	0.1	0.2	0.1	0.1	0.1	0.2
65+	12.3	0.1	2.9	0.2	2.2	1.7	0.5	1.3	0.8	2.6
All ages(IARC world std) ^d	2.6	0.0	0.6	0.0	0.4	0.4	0.1	0.2	0.2	0.5
SEX										
Male	4.0	0.0	0.9	0.1	0.5	0.7	0.2	0.4	0.3	0.9
Female	1.5	0.0	0.4	0.0	0.3	0.2	0.0	0.1	0.1	0.3
RACE										
White	2.5	0.0	0.6	0.0	0.4	0.4	0.1	0.2	0.2	0.5
Black	3.7	.	0.7	0.1	0.5	0.7	0.2	0.2	0.3	1.1
Other	2.2	.	0.4	.	0.2	0.2	0.1	0.1	0.8	0.3

^a SEER 17 areas. Rates are per 100,000 and are age-adjusted to the 2000 US Std Population (19 age groups - Census P25-1130), unless noted.

^b US Mortality Files, National Center for Health Statistics, Centers for Disease Control and Prevention. Rates are per 100,000 and are age-adjusted to the 2000 US Std Population (19 age groups - Census P25-1130), unless noted.

^c Percents may not sum to 100 due to rounding.

^d Rates are per 100,000 and are age-adjusted to the IARC world standard population.

- Statistic not shown. Rate based on less than 16 cases for the time interval.

Table XX-5a
 CANCER OF THE ORAL CAVITY AND PHARYNX (Invasive)

SURVIVAL RATES, BY RACE, SEX, DIAGNOSIS YEAR, STAGE AND AGE

	All Races			Whites			Blacks		
	Total	Males	Females	Total	Males	Females	Total	Males	Females
<u>5-YR RELATIVE SURVIVAL RATES</u>									
YEAR OF DIAGNOSIS:									
1960-1963 ^a	-	-	-	45	-	-	-	-	-
1970-1973 ^a	-	-	-	43	-	-	-	-	-
1975-1977 ^b	53.1	51.9	55.8	54.6	54.1	55.9	36.4	30.0	48.9
1978-1980 ^b	54.0	52.4	57.4	56.1	55.1	58.2	35.1	29.9	46.2
1981-1983 ^b	52.6	51.1	56.0	55.0	53.8	57.5	31.8	26.4	45.7
1984-1986 ^b	54.6	52.0	59.8	56.8	55.2	60.1	35.7	29.8	50.3
1987-1989 ^b	54.2	51.4	60.0	56.6	54.4	61.1	34.4	30.1	44.8
1990-1992 ^b	56.2	53.8	61.3	58.7	57.0	62.3	33.3	28.3	46.8
1993-1995 ^b	58.4	56.7	61.8	60.9	60.0	62.6	38.2	32.8	51.8
1996-2004 ^b	60.4 ^e	58.9 ^e	63.6 ^e	62.4 ^e	61.7 ^e	64.0 ^e	41.7 ^e	36.0 ^e	54.9
<u>5-YR PERIOD SURVIVAL RATES^{cd}</u>									
YEAR OF DIAGNOSIS:									
1996-2004	60.9	59.3	64.3	62.6	61.8	64.4	43.7	39.0	55.0
<u>STAGE DISTRIBUTION (%) 1996-2004^c</u>									
All Stages									
Number of cases	42,748	29,346	13,402	34,451	23,723	10,728	4,335	3,075	1,260
Percent	100%	100%	100%	100%	100%	100%	100%	100%	100%
Localized	33	29	41	35	31	42	20	17	30
Regional	51	55	45	50	53	43	58	61	51
Distant	10	11	9	10	10	9	17	18	14
Unstaged	5	5	6	5	5	6	5	5	5
<u>5-YR RELATIVE SURVIVAL RATES, 1996-2004^c</u>									
AGE AT DIAGNOSIS:									
<45	76.6	72.9	83.5	79.3	76.4	84.9	61.1	53.7	72.1
45-54	63.7	62.1	68.5	67.8	66.7	71.4	38.3	35.5	46.5
55-64	58.6	56.9	63.4	61.0	59.4	65.4	37.6	35.6	44.5
65-74	53.9	52.6	56.5	55.7	55.4	56.4	31.3	25.7	44.4
75+	47.5	46.7	48.2	48.5	48.2	48.7	36.8	26.7	49.4 ^f
Under 65	64.4	62.0	70.7	67.1	65.3	72.3	43.1	38.9	54.1
65 and over	51.4	50.6	52.7	52.9	52.9	52.8	33.0	26.1	46.6
STAGE:									
All Stages	59.7	58.3	62.7	61.6	61.0	62.9	40.7	36.1	52.1
Localized	82.2	81.5	83.2	82.6	82.7	82.5	72.8	64.9	83.2
Regional	52.7	53.1	51.6	54.7	55.8	51.5	35.0	32.6	41.7
Distant	28.4	27.4	31.0	29.1	28.1	31.7	22.4	22.1	23.7
Unstaged	47.7	46.0	51.0	47.0	46.1	48.5	34.1	29.3	43.6 ^f

^a Rates are based on End Results data from a series of hospital registries and one population-based registry.

^b Rates are from the SEER 9 areas (San Francisco, Connecticut, Detroit, Hawaii, Iowa, New Mexico, Seattle, Utah, Atlanta).

Rates are based on follow-up of patients into 2005.

^c Rates are from the SEER 17 areas (San Francisco, Connecticut, Detroit, Hawaii, Iowa, New Mexico, Seattle, Utah, Atlanta, San Jose-Monterey, Los Angeles, Alaska Native Registry, Rural Georgia, California excluding SF/SJM/LA, Kentucky, Louisiana and New Jersey). California excluding SF/SJM/LA, Kentucky, Louisiana, and New Jersey contribute cases for diagnosis years 2000-2004. The remaining 13 SEER Areas contribute cases for the entire period 1996-2004. Rates are based on follow-up of patients into 2005.

^d Period survival provides a more up-to-date estimate of survival by piecing together the most recent conditional survival estimates from several cohorts. It is computed here using three calendar year blocks (2002-2004: 0-1 year survival), (2001-2003: 1-2 year survival), (2000-2002: 2-3 year survival), (1999-2001: 3-4 year survival), (1998-2000: 4-5 years survival).

^e The difference in rates between 1975-1977 and 1996-2004 is statistically significant ($p < .05$).

^f The standard error of the survival rate is between 5 and 10 percentage points.

^g The standard error of the survival rate is greater than 10 percentage points.

- Statistic could not be calculated due to fewer than 16 cases during the time period.

Table XX-5b

CANCER OF THE ORAL CAVITY AND PHARYNX BY SUBSITE (Invasive)

RELATIVE SURVIVAL RATES^a BY CANCER SITE, 1988-2004

SITE	Number of Cases	Case Distribution (%)	SURVIVAL YEARS					
			1-Year Percent	2-Year Percent	3-Year Percent	5-Year Percent	8-Year Percent	10-Year Percent
Oral Cavity & Pharynx	37636	100	83.0	71.4	65.3	58.3	51.9	48.2
Lip	3971	11	99.7	98.3	96.9	93.9	90.3	87.3
Tongue	8612	23	81.7	67.7	61.1	55.1	48.7	44.8
Gum & Other Mouth	4076	11	90.3	82.8	78.3	73.9	71.1	69.7
Floor of Mouth	5756	15	82.2	71.5	66.2	59.9	52.2	48.4
Oropharynx & Tonsil	3102	8	83.0	69.3	61.9	52.7	43.2	38.0
Hypopharynx	2638	7	83.7	72.7	65.7	56.7	49.8	46.7
Salivary Gland	5419	14	80.5	67.8	60.8	52.2	45.8	42.2
Nasopharynx	3054	8	66.9	48.1	38.6	29.0	22.0	18.4
Other Oral Cavity & Pharynx	1008	3	63.9	47.2	39.6	30.4	25.0	22.6

5-YEAR RELATIVE SURVIVAL RATES, 1988-2004

SITE	STAGE					ALL STAGES			
	All Stages	Localized	Regional	Distant	Unstaged	White Male	White Female	Black Male	Black Female
Oral Cavity & Pharynx	58.3	82.3	48.6	25.8	52.8	59.4	63.0	32.8	51.2
Lip	93.9	97.0	80.7	37.4 ^b	89.9	93.6	95.1	96.2 ^c	74.1 ^c
Tongue	55.1	74.1	47.9	26.9	44.1	55.7	60.4	31.2	37.1
Gum & Other Mouth	73.9	94.7	58.5	32.8	56.5	68.3	79.3	65.1	85.0
Floor of Mouth	59.9	81.4	47.7	27.5	54.6	57.8	66.4	37.9	64.6
Oropharynx & Tonsil	52.7	73.4	39.7	19.3	49.5	53.3	58.5	31.5	55.8 ^b
Hypopharynx	56.7	78.4	58.0	33.7	51.1	52.2	50.3	44.6	48.5 ^b
Salivary Gland	52.2	66.2	54.8	29.1	38.7	56.4	51.9	29.2	34.1
Nasopharynx	29.0	50.3	30.1	13.3	27.8	29.8	32.8	21.1	24.4
Other Oral Cavity & Pharynx	30.4	47.4	30.5	5.7	32.6	33.1	30.2	17.5	23.2 ^b

^a Rates are from the SEER 9 areas (San Francisco, Connecticut, Detroit, Hawaii, Iowa, New Mexico, Seattle, Utah, Atlanta). Rates are based on follow-up of patients into 2005.

^b The standard error of the survival rate is between 5 and 10 percentage points.

^c The standard error of the survival rate is greater than 10 percentage points.

Table XX-6a
CANCER OF THE ORAL CAVITY AND PHARYNX (Invasive)

SURVIVAL RATES^a

By Year of Diagnosis

All Races, Males and Females

Year of Diagnosis

	1975- 1979	1980- 1984	1985	1986	1987	1988	1989	1990	1991	1992	1993	1994	1995	1996	1997	1998	1999	2000	2001	2002	2003	2004
Relative Survival Rates (SEER ^b)																						
1-year	80.3	80.2	82.1	80.7	81.2	82.3	80.0	82.1	81.9	80.5	82.1	83.8	83.5	82.2	84.2	81.5	84.2	85.2	83.4	84.2	84.5	84.8
2-year	66.4	66.6	68.8	67.4	68.5	67.6	68.3	70.1	69.7	69.4	69.2	72.3	72.1	70.3	71.5	70.6	72.8	73.8	73.6	73.2	75.2	
3-year	60.2	60.2	61.4	61.6	62.4	60.3	61.7	63.6	63.2	62.3	63.2	66.6	66.0	64.1	66.5	64.8	66.0	68.9	67.8	67.9		
4-year	56.3	56.2	57.9	58.2	59.2	55.4	57.4	60.4	58.6	57.7	59.1	62.4	62.3	60.5	62.7	60.8	62.7	65.1	63.4			
5-year	53.4	53.2	55.0	55.4	56.0	52.3	54.2	57.7	55.4	55.5	56.3	59.6	59.4	58.7	59.4	57.9	59.8	62.4				
6-year	51.1	50.5	53.2	53.0	53.8	49.4	51.6	55.6	52.7	53.0	54.1	56.9	57.0	56.5	57.1	56.9	57.1					
7-year	49.1	48.4	50.6	51.0	51.5	46.5	49.0	53.3	50.6	50.5	51.8	55.9	54.7	54.9	55.7	55.3						
8-year	47.0	46.9	49.4	49.3	48.6	44.2	47.4	51.6	49.2	48.5	49.8	52.9	52.7	52.9	54.8							
9-year	45.2	45.2	47.6	47.2	47.0	42.6	45.8	48.9	47.7	46.6	47.8	50.5	50.9	51.8								
10-year	43.3	43.6	46.4	45.4	45.6	41.2	43.7	47.2	46.1	45.2	46.6	48.5	49.7									
11-year	41.5	42.2	45.4	44.3	44.4	39.4	42.8	46.0	44.0	43.2	45.1	46.9										
12-year	40.2	40.9	43.7	43.2	43.0	38.0	41.5	45.1	42.1	42.1	44.7											
13-year	39.0	39.3	42.3	41.9	41.0	36.8	40.5	43.1	41.5	40.8												
14-year	38.0	38.4	40.9	41.1	40.0	36.1	38.7	42.1	40.9													
15-year	36.8	36.9	40.1	39.6	39.2	36.0	37.4	41.6														
16-year	35.7	35.9	39.6	38.2	38.0	34.7	36.5															
17-year	35.0	35.0	39.5	38.2	36.9	34.1																
18-year	34.1	34.1	38.7	37.1	35.4																	
19-year	33.6	32.8	37.7	36.1																		
20-year	32.7	32.4	36.8																			

^a Survival rates are relative rates expressed as percents.

^b Rates are from the SEER 9 areas (San Francisco, Connecticut, Detroit, Hawaii, Iowa, New Mexico, Seattle, Utah, and Atlanta).

Table XX-6b
 CANCER OF THE ORAL CAVITY AND PHARYNX FOR SELECTED SUBSITES (Invasive)

SURVIVAL RATES^a

By Year of Diagnosis

All Races, Males and Females

Year of Diagnosis

	1975- 1979	1980- 1984	1985	1986	1987	1988	1989	1990	1991	1992	1993	1994	1995	1996	1997	1998	1999	2000	2001	2002	2003	2004
Relative Survival Rates (SEER ^b)																						
<u>Tongue Cancer</u>																						
1-year	75.3	74.4	80.7	76.7	78.4	77.3	76.0	80.3	82.2	77.3	82.0	82.2	80.4	79.9	82.5	80.2	82.2	85.5	82.4	81.9	85.2	87.3
2-year	55.5	58.1	63.8	59.8	61.3	59.4	59.8	64.6	67.2	60.6	65.8	68.8	65.9	67.1	71.3	66.3	68.8	72.1	71.6	69.2	71.6	
3-year	48.1	51.4	57.5	56.3	55.4	51.1	54.4	58.5	59.2	51.2	57.6	63.3	59.4	61.2	65.6	59.7	61.0	66.9	65.1	63.6		
4-year	44.3	48.1	53.1	52.9	49.8	46.8	50.3	55.8	53.9	47.4	54.7	59.0	57.4	57.5	62.6	56.1	58.9	64.2	62.2			
5-year	41.1	45.5	49.8	51.8	46.4	44.4	47.8	52.9	53.2	44.6	52.3	55.2	55.0	55.9	58.8	53.6	56.2	63.1				
6-year	39.4	42.6	48.1	48.1	46.0	41.6	45.2	50.7	49.6	43.2	50.5	53.1	51.6	53.7	57.5	53.3	54.5					
7-year	38.4	40.1	45.8	46.2	43.9	35.5	43.7	48.0	47.9	41.6	47.8	52.6	49.8	52.6	56.8	50.8						
8-year	37.0	38.5	45.1	44.7	42.3	32.4	41.3	45.8	47.2	40.3	45.7	49.2	47.8	51.1	55.8							
9-year	35.9	35.8	42.6	43.8	41.2	31.0	39.3	42.8	45.6	36.5	43.4	47.2	46.2	50.2								
10-year	34.2	34.4	42.0	42.5	40.1	30.9	37.5	40.9	42.9	34.1	43.1	46.1	45.0									
<u>Lip Cancer</u>																						
1-year	99.3	98.2	99.2	99.4	99.9	100.0	97.8	99.0	100.0	100.0	99.3	100.0	99.9	98.3	100.0	99.3	97.4	97.8	94.8	99.6	99.3	99.7
2-year	97.5	96.6	97.4	97.1	98.4	97.8	97.5	97.8	98.6	98.5	98.7	100.0	99.5	94.1	96.8	97.8	95.2	96.1	93.7	99.6	99.3	
3-year	97.1	94.4	95.0	95.7	98.4	96.3	96.6	96.3	98.6	97.0	98.6	100.0	98.7	92.7	94.6	95.4	93.6	94.9	93.7	97.0		
4-year	95.8	93.3	95.0	95.7	98.4	94.9	95.8	96.3	97.8	95.3	98.6	98.1	95.8	91.8	93.0	93.6	91.8	91.8	91.6			
5-year	94.4	91.2	95.0	95.2	97.6	93.0	93.9	95.1	96.0	94.5	96.5	97.6	94.7	89.6	90.8	91.2	90.2	89.3				
6-year	92.7	89.2	95.0	92.8	96.8	91.8	93.5	93.2	96.0	91.0	95.9	97.2	94.7	88.6	89.3	90.0	89.3					
7-year	91.5	88.1	93.8	91.5	95.4	89.2	92.8	92.5	95.8	88.2	94.3	97.2	94.7	88.3	88.5	90.0						
8-year	90.4	88.1	93.0	89.1	94.1	87.2	92.8	92.2	95.1	85.9	91.5	96.1	90.3	85.4	88.5							
9-year	88.4	87.5	93.0	87.2	93.8	87.2	90.1	89.9	93.0	84.8	90.2	94.2	85.9	85.1								
10-year	86.7	86.4	93.0	86.0	93.3	87.2	88.2	89.1	91.0	83.2	88.6	91.3	81.6									
<u>Oropharynx and Tonsil Cancer</u>																						
1-year	71.4	72.4	75.3	71.5	71.7	76.2	75.1	76.8	76.8	71.4	77.6	74.5	81.1	80.4	81.7	81.2	87.5	82.8	84.0	85.8	82.9	84.3
2-year	54.2	53.4	57.3	52.3	55.3	57.5	61.7	60.5	63.0	58.5	64.8	63.8	70.2	66.7	67.4	66.7	75.6	67.6	72.5	76.8	76.1	
3-year	44.8	45.2	46.4	46.3	43.4	44.1	52.2	51.8	57.7	49.9	55.6	57.7	63.0	60.4	62.3	60.1	68.0	62.6	67.2	72.4		
4-year	39.4	40.1	44.0	42.7	41.8	37.8	45.5	48.1	53.3	45.1	49.7	53.4	58.9	54.1	56.8	55.1	63.7	57.9	60.7			
5-year	36.3	36.2	37.6	39.3	39.1	34.5	43.6	43.4	46.7	41.7	46.3	50.1	54.8	53.1	52.5	53.3	61.2	54.4				
6-year	32.9	33.0	34.5	37.3	35.0	32.2	40.1	43.1	41.8	40.7	44.3	47.0	51.4	48.7	49.4	52.3	58.3					
7-year	31.1	30.6	31.6	34.1	32.3	30.1	37.5	41.1	40.3	39.8	43.3	46.6	48.0	44.6	48.7	51.1						
8-year	27.5	29.1	30.0	32.1	29.3	29.6	37.0	39.7	37.7	38.8	41.4	43.2	47.3	43.6	48.2							
9-year	24.8	26.9	27.6	29.8	27.1	29.3	35.9	36.0	35.9	37.1	38.8	42.1	46.2	42.8								
10-year	23.6	24.5	24.1	28.7	26.5	25.2	34.6	35.8	34.1	37.1	35.6	41.2	45.5									

^aSurvival rates are relative rates expressed as percents.^bRates are from the SEER 9 areas (San Francisco, Connecticut, Detroit, Hawaii, Iowa, New Mexico, Seattle, Utah, and Atlanta).

Table XX-7
CANCER OF THE ORAL CAVITY AND PHARYNX (Invasive)

SURVIVAL RATES^a

By Year of Diagnosis

All Races, Males

Year of Diagnosis

	1975- 1979	1980- 1984	1985	1986	1987	1988	1989	1990	1991	1992	1993	1994	1995	1996	1997	1998	1999	2000	2001	2002	2003	2004
Relative Survival Rates (SEER ^b)																						
1-year	79.7	79.6	82.6	79.2	80.8	81.4	78.6	81.3	81.5	79.8	81.0	84.0	83.5	81.9	83.4	81.1	84.6	85.0	83.9	84.3	84.8	85.4
2-year	65.5	65.7	68.5	64.6	67.4	66.4	66.1	68.1	68.8	68.1	67.6	72.5	71.2	69.6	70.0	70.4	71.8	73.2	73.6	72.0	74.9	
3-year	59.3	58.8	60.4	57.7	61.0	58.5	58.9	61.7	61.5	60.3	60.9	65.4	65.3	62.8	64.9	64.1	64.4	67.6	68.1	65.7		
4-year	54.9	54.7	57.4	54.2	57.5	53.0	53.9	58.3	55.5	56.2	57.1	60.7	61.0	58.9	60.4	59.6	60.7	63.9	63.1			
5-year	52.0	51.5	53.9	51.0	54.0	49.5	50.4	55.4	52.1	53.7	54.1	58.2	58.1	57.1	56.9	56.6	58.1	61.0				
6-year	49.7	48.8	52.1	49.0	51.7	46.8	48.4	53.2	49.5	51.5	51.6	55.8	55.3	54.3	54.6	55.6	55.1					
7-year	47.7	46.7	49.6	47.3	50.1	44.2	45.9	50.7	47.0	48.5	48.8	54.9	52.6	52.2	53.5	53.7						
8-year	45.7	45.2	48.8	45.1	46.8	41.1	44.1	49.4	45.7	46.4	47.7	52.1	50.3	50.3	52.5							
9-year	43.8	43.5	47.2	43.3	45.3	39.1	42.0	46.6	44.2	44.6	45.4	49.5	48.4	49.6								
10-year	41.8	41.7	45.9	41.3	43.8	37.1	39.1	45.7	42.2	43.2	44.6	47.5	46.9									
11-year	40.0	40.2	45.1	40.8	41.9	35.3	38.1	44.4	40.4	41.5	43.3	46.3										
12-year	38.7	39.1	43.5	39.8	40.3	34.0	36.9	43.7	38.1	40.3	42.7											
13-year	37.7	37.7	42.1	38.2	38.6	32.8	36.5	41.7	37.8	39.0												
14-year	36.8	36.9	40.3	37.8	37.5	31.5	35.2	40.4	37.5													
15-year	35.6	35.4	39.2	36.2	36.5	31.5	34.4	39.9														
16-year	34.4	34.3	38.5	35.0	35.5	30.0	34.0															
17-year	33.7	33.4	38.2	35.0	34.4	29.0																
18-year	33.0	32.4	37.3	34.5	33.5																	
19-year	32.6	30.7	36.3	32.8																		
20-year	31.7	30.2	35.5																			

^a Survival rates are relative rates expressed as percents.

^b Rates are from the SEER 9 areas (San Francisco, Connecticut, Detroit, Hawaii, Iowa, New Mexico, Seattle, Utah, and Atlanta).

Table XX-8
CANCER OF THE ORAL CAVITY AND PHARYNX (Invasive)

SURVIVAL RATES^a

By Year of Diagnosis

All Races, Females

Year of Diagnosis

	1975- 1979	1980- 1984	1985	1986	1987	1988	1989	1990	1991	1992	1993	1994	1995	1996	1997	1998	1999	2000	2001	2002	2003	2004	
Relative Survival Rates (SEER ^b)																							
1-year	81.7	81.3	81.2	84.0	82.1	84.2	82.9	83.9	82.8	82.0	84.5	83.5	83.6	82.6	86.2	82.4	83.4	85.8	82.4	83.8	83.9	83.4	
2-year	68.4	68.4	69.2	73.5	71.0	70.0	72.5	74.6	71.6	72.2	72.5	71.9	73.9	71.7	75.0	70.9	74.9	75.2	73.3	75.9	75.8		
3-year	62.1	63.1	63.2	70.0	65.5	63.9	67.2	67.8	66.8	66.3	68.2	69.3	67.4	66.7	70.1	66.5	69.4	71.9	67.2	72.5			
4-year	59.3	59.3	58.9	66.8	63.0	60.2	64.4	65.0	64.9	61.1	63.4	65.9	64.8	63.8	67.9	63.3	66.8	67.9	64.1				
5-year	56.4	56.7	57.2	64.8	60.3	58.1	61.5	62.5	62.0	59.2	60.5	62.6	61.9	61.8	65.0	60.7	63.3	65.4					
6-year	54.0	54.0	55.2	61.5	58.3	54.5	57.5	60.6	59.1	56.3	59.4	59.2	60.3	60.8	62.8	59.6	61.5						
7-year	52.2	51.8	52.4	58.9	54.6	50.9	54.8	58.4	57.8	54.6	58.2	57.9	58.6	60.4	60.6	58.8							
8-year	49.8	50.5	50.3	58.1	52.5	50.4	53.8	56.1	56.2	52.8	54.5	54.5	57.1	58.0	59.7								
9-year	48.2	48.5	48.3	55.4	50.7	49.3	52.9	53.5	54.6	50.9	52.8	52.5	55.5	56.2									
10-year	46.4	47.3	47.2	53.5	49.6	49.0	51.9	50.3	53.7	49.6	51.1	50.6	54.4										
11-year	44.5	46.1	45.9	51.4	49.5	47.3	51.6	49.1	51.1	46.6	49.2	48.0											
12-year	43.0	44.4	44.0	50.2	48.6	45.6	49.9	47.8	50.0	45.4	49.0												
13-year	41.6	42.3	42.6	49.3	46.2	44.4	48.0	46.1	48.7	44.5													
14-year	40.5	41.4	41.9	47.7	45.4	44.4	45.1	45.3	47.3														
15-year	38.9	39.7	41.6	46.2	44.8	44.2	42.7	45.0															
16-year	38.0	38.7	41.2	44.6	43.2	43.6	41.0																
17-year	37.3	38.0	41.2	43.9	42.0	43.0																	
18-year	36.2	37.3	41.0	42.3	39.3																		
19-year	35.4	36.6	39.9	42.0																			
20-year	34.4	36.4	39.1																				

^a Survival rates are relative rates expressed as percents.

^b Rates are from the SEER 9 areas (San Francisco, Connecticut, Detroit, Hawaii, Iowa, New Mexico, Seattle, Utah, and Atlanta).

Table XX-9
 CANCER OF THE ORAL CAVITY AND PHARYNX (Invasive)

Risk of Being Diagnosed With Cancer in 10, 20 and 30 Years, Lifetime Risk of Being Diagnosed with Cancer, and
 Lifetime Risk of Dying from Cancer Given Cancer Free At Current Age
 Both Sexes, 2003-2005 By Race/Ethnicity

Race/ Ethnicity	Current Age	Risk of Being Diagnosed with Cancer				Risk of Dying from Cancer	
		+10 yrs Percent (95% C.I.)	+20 yrs Percent (95% C.I.)	+30 yrs Percent (95% C.I.)	Eventually Percent (95% C.I.)	Eventually Percent (95% C.I.)	
All Races	0	0.00 (0.00, 0.00)	0.00 (0.00, 0.01)	0.01 (0.01, 0.01)	1.01 (1.00, 1.03)	0.28 (0.28, 0.28)	
	10	0.00 (0.00, 0.00)	0.01 (0.01, 0.01)	0.04 (0.03, 0.04)	1.02 (1.01, 1.04)	0.28 (0.28, 0.29)	
	20	0.01 (0.01, 0.01)	0.03 (0.03, 0.03)	0.11 (0.11, 0.12)	1.02 (1.01, 1.04)	0.29 (0.28, 0.29)	
	30	0.02 (0.02, 0.03)	0.11 (0.10, 0.11)	0.31 (0.30, 0.31)	1.02 (1.01, 1.04)	0.29 (0.28, 0.29)	
	40	0.08 (0.08, 0.09)	0.29 (0.28, 0.29)	0.56 (0.55, 0.57)	1.01 (1.00, 1.03)	0.29 (0.28, 0.29)	
	50	0.21 (0.20, 0.21)	0.49 (0.48, 0.50)	0.76 (0.74, 0.77)	0.96 (0.94, 0.97)	0.28 (0.28, 0.29)	
	60	0.30 (0.29, 0.31)	0.58 (0.57, 0.60)	0.75 (0.74, 0.77)	0.80 (0.78, 0.81)	0.25 (0.25, 0.26)	
	70	0.33 (0.32, 0.34)	0.52 (0.51, 0.53)	- (- , -)	0.57 (0.56, 0.59)	0.20 (0.20, 0.21)	
80	0.27 (0.26, 0.28)	- (- , -)	- (- , -)	0.35 (0.34, 0.36)	0.15 (0.14, 0.15)		
White	0	0.00 (0.00, 0.00)	0.00 (0.00, 0.01)	0.01 (0.01, 0.01)	1.03 (1.02, 1.05)	0.27 (0.27, 0.28)	
	10	0.00 (0.00, 0.00)	0.01 (0.01, 0.01)	0.03 (0.03, 0.03)	1.04 (1.03, 1.06)	0.28 (0.27, 0.28)	
	20	0.01 (0.01, 0.01)	0.03 (0.03, 0.03)	0.11 (0.11, 0.11)	1.04 (1.03, 1.06)	0.28 (0.27, 0.28)	
	30	0.02 (0.02, 0.02)	0.10 (0.10, 0.11)	0.30 (0.30, 0.31)	1.04 (1.03, 1.06)	0.28 (0.28, 0.28)	
	40	0.08 (0.08, 0.09)	0.29 (0.28, 0.29)	0.57 (0.56, 0.58)	1.03 (1.02, 1.05)	0.28 (0.28, 0.29)	
	50	0.21 (0.20, 0.21)	0.50 (0.49, 0.51)	0.78 (0.76, 0.79)	0.98 (0.96, 1.00)	0.28 (0.27, 0.28)	
	60	0.31 (0.30, 0.32)	0.60 (0.59, 0.62)	0.77 (0.76, 0.79)	0.82 (0.80, 0.83)	0.25 (0.25, 0.25)	
	70	0.34 (0.33, 0.35)	0.54 (0.52, 0.55)	- (- , -)	0.59 (0.57, 0.60)	0.20 (0.20, 0.21)	
80	0.28 (0.27, 0.29)	- (- , -)	- (- , -)	0.35 (0.34, 0.36)	0.15 (0.14, 0.15)		
Black	0	0.00 (0.00, 0.00)	0.01 (0.00, 0.01)	0.02 (0.01, 0.02)	0.87 (0.83, 0.91)	0.33 (0.32, 0.34)	
	10	0.01 (0.00, 0.01)	0.02 (0.01, 0.02)	0.04 (0.03, 0.04)	0.89 (0.85, 0.93)	0.34 (0.32, 0.35)	
	20	0.01 (0.01, 0.01)	0.03 (0.03, 0.04)	0.12 (0.11, 0.13)	0.89 (0.85, 0.93)	0.34 (0.32, 0.35)	
	30	0.02 (0.02, 0.03)	0.11 (0.10, 0.12)	0.34 (0.32, 0.36)	0.90 (0.85, 0.94)	0.34 (0.33, 0.35)	
	40	0.09 (0.09, 0.10)	0.32 (0.31, 0.34)	0.58 (0.55, 0.61)	0.90 (0.85, 0.94)	0.34 (0.33, 0.36)	
	50	0.24 (0.23, 0.26)	0.52 (0.49, 0.55)	0.73 (0.69, 0.77)	0.84 (0.80, 0.89)	0.33 (0.32, 0.35)	
	60	0.31 (0.28, 0.33)	0.55 (0.51, 0.59)	0.65 (0.61, 0.70)	0.68 (0.64, 0.72)	0.28 (0.27, 0.30)	
	70	0.30 (0.28, 0.34)	0.43 (0.39, 0.47)	- (- , -)	0.47 (0.42, 0.51)	0.20 (0.19, 0.21)	
80	0.20 (0.17, 0.24)	- (- , -)	- (- , -)	0.26 (0.22, 0.31)	0.13 (0.12, 0.14)		

Devcan Version 7.0.0, April 2008, National Cancer Institute (<http://srab.cancer.gov/devcan/>).

Source: Incidence data are from the SEER 17 areas (San Francisco, Connecticut, Detroit, Hawaii, Iowa, New Mexico, Seattle, Utah, Atlanta, San Jose-Monterey, Los Angeles, Alaska Native Registry, Rural Georgia, California excluding SF/SJM/LA, Kentucky, Louisiana and New Jersey). Mortality data are from the NCHS public use data file for the total US.

- Statistic could not be calculated.

A percent or confidence interval value of 0.00 represents a value that is below 0.005.

Table XX-9 - continued
 CANCER OF THE ORAL CAVITY AND PHARYNX (Invasive)

Risk of Being Diagnosed With Cancer in 10, 20 and 30 Years, Lifetime Risk of Being Diagnosed with Cancer, and
 Lifetime Risk of Dying from Cancer Given Cancer Free At Current Age
 Both Sexes, 2003-2005 By Race/Ethnicity

Race/ Ethnicity	Current Age	Risk of Being Diagnosed with Cancer				Risk of Dying from Cancer	
		+10 yrs Percent (95% C.I.)	+20 yrs Percent (95% C.I.)	+30 yrs Percent (95% C.I.)	Eventually Percent (95% C.I.)	Eventually Percent (95% C.I.)	
Asian/ Pacific Islander	0	0.00 (0.00, 0.00)	0.00 (0.00, 0.01)	0.02 (0.01, 0.02)	0.85 (0.80, 0.91)	0.32 (0.28, 0.37)	
	10	0.00 (0.00, 0.01)	0.02 (0.01, 0.02)	0.05 (0.05, 0.06)	0.86 (0.80, 0.92)	0.32 (0.29, 0.37)	
	20	0.01 (0.01, 0.02)	0.05 (0.04, 0.06)	0.13 (0.12, 0.14)	0.86 (0.80, 0.92)	0.32 (0.29, 0.37)	
	30	0.04 (0.03, 0.04)	0.12 (0.11, 0.13)	0.25 (0.24, 0.27)	0.85 (0.79, 0.91)	0.32 (0.29, 0.37)	
	40	0.08 (0.07, 0.09)	0.22 (0.20, 0.23)	0.41 (0.38, 0.44)	0.81 (0.76, 0.88)	0.32 (0.28, 0.37)	
	50	0.14 (0.12, 0.15)	0.33 (0.31, 0.36)	0.52 (0.48, 0.56)	0.74 (0.69, 0.81)	0.31 (0.27, 0.36)	
	60	0.20 (0.18, 0.22)	0.40 (0.36, 0.43)	0.57 (0.52, 0.62)	0.63 (0.57, 0.69)	0.29 (0.25, 0.33)	
	70	0.21 (0.19, 0.24)	0.40 (0.36, 0.44)	- (- , -)	0.46 (0.41, 0.53)	0.25 (0.21, 0.30)	
80	0.23 (0.20, 0.27)	- (- , -)	- (- , -)	0.31 (0.26, 0.38)	0.21 (0.16, 0.27)		
American Indian/ Alaska Native ^a	0	0.00 (0.00, 0.02)	0.00 (0.00, 0.02)	0.00 (0.00, 0.02)	0.68 (0.53, 0.99)	0.24 (0.18, 0.34)	
	10	0.00 (0.00, 0.01)	0.00 (0.00, 0.01)	0.01 (0.00, 0.03)	0.69 (0.54, 1.01)	0.24 (0.18, 0.34)	
	20	0.00 (0.00, 0.01)	0.01 (0.00, 0.03)	0.09 (0.06, 0.13)	0.69 (0.54, 1.02)	0.24 (0.18, 0.35)	
	30	0.01 (0.00, 0.03)	0.09 (0.06, 0.13)	0.25 (0.19, 0.33)	0.71 (0.55, 1.03)	0.25 (0.19, 0.35)	
	40	0.08 (0.05, 0.12)	0.25 (0.19, 0.32)	0.47 (0.37, 0.60)	0.71 (0.55, 1.05)	0.25 (0.19, 0.36)	
	50	0.17 (0.12, 0.24)	0.41 (0.31, 0.53)	0.56 (0.43, 0.73)	0.66 (0.50, 1.01)	0.26 (0.20, 0.37)	
	60	0.25 (0.17, 0.36)	0.42 (0.29, 0.58)	0.49 (0.34, 0.69)	0.52 (0.36, 0.89)	0.25 (0.18, 0.37)	
	70	0.19 (0.11, 0.32)	0.27 (0.16, 0.46)	- (- , -)	0.31 (0.17, 0.73)	0.21 (0.14, 0.35)	
80	0.12 (0.03, 0.32)	- (- , -)	- (- , -)	0.17 (0.05, 0.75)	0.13 (0.06, 0.32)		
Hispanic ^b	0	0.00 (0.00, 0.00)	0.00 (0.00, 0.00)	0.01 (0.01, 0.01)	0.69 (0.65, 0.75)	0.21 (0.19, 0.23)	
	10	0.00 (0.00, 0.00)	0.01 (0.01, 0.01)	0.02 (0.02, 0.02)	0.70 (0.65, 0.75)	0.21 (0.19, 0.23)	
	20	0.01 (0.00, 0.01)	0.02 (0.02, 0.02)	0.06 (0.06, 0.07)	0.70 (0.65, 0.76)	0.21 (0.19, 0.23)	
	30	0.01 (0.01, 0.02)	0.06 (0.05, 0.06)	0.17 (0.16, 0.18)	0.70 (0.65, 0.76)	0.21 (0.19, 0.23)	
	40	0.04 (0.04, 0.05)	0.16 (0.14, 0.17)	0.32 (0.30, 0.34)	0.69 (0.65, 0.75)	0.21 (0.19, 0.23)	
	50	0.12 (0.11, 0.13)	0.28 (0.26, 0.30)	0.47 (0.44, 0.50)	0.67 (0.62, 0.72)	0.21 (0.19, 0.23)	
	60	0.18 (0.16, 0.19)	0.37 (0.35, 0.40)	0.51 (0.47, 0.55)	0.58 (0.53, 0.64)	0.19 (0.18, 0.22)	
	70	0.22 (0.20, 0.25)	0.37 (0.34, 0.41)	- (- , -)	0.45 (0.40, 0.51)	0.16 (0.14, 0.19)	
80	0.20 (0.17, 0.24)	- (- , -)	- (- , -)	0.30 (0.24, 0.37)	0.13 (0.11, 0.16)		

Devcan Version 7.0.0, April 2008, National Cancer Institute (<http://srab.cancer.gov/devcan/>).

Source: Incidence data are from the SEER 17 areas (San Francisco, Connecticut, Detroit, Hawaii, Iowa, New Mexico, Seattle, Utah, Atlanta, San Jose-Monterey, Los Angeles, Alaska Native Registry, Rural Georgia, California excluding SF/SJM/LA, Kentucky, Louisiana and New Jersey). Mortality data are from the NCHS public use data file for the total US.

^a Underlying incidence and mortality data for American Indian/Alaska Native are based on the CHSDA (Contract Health Service Delivery Area) counties.

^b Hispanic is not mutually exclusive from whites, blacks, Asian/Pacific Islanders, and American Indians/Alaska Natives. Underlying incidence data for Hispanics are based on NHIA and exclude cases from the Alaska Native Registry and Kentucky. Underlying mortality data for Hispanics exclude deaths from Minnesota, New Hampshire and North Dakota.

- Statistic could not be calculated.

A percent or confidence interval value of 0.00 represents a value that is below 0.005.

Table XX-9 - continued
 CANCER OF THE ORAL CAVITY AND PHARYNX (Invasive)

Risk of Being Diagnosed With Cancer in 10, 20 and 30 Years, Lifetime Risk of Being Diagnosed with Cancer, and
 Lifetime Risk of Dying from Cancer Given Cancer Free At Current Age
 Males, 2003-2005 By Race/Ethnicity

Race/ Ethnicity	Current Age	Risk of Being Diagnosed with Cancer				Risk of Dying from Cancer	
		+10 yrs Percent (95% C.I.)	+20 yrs Percent (95% C.I.)	+30 yrs Percent (95% C.I.)	Eventually Percent (95% C.I.)	Eventually Percent (95% C.I.)	
All Races	0	0.00 (0.00, 0.00)	0.00 (0.00, 0.01)	0.01 (0.01, 0.01)	1.39 (1.37, 1.42)	0.38 (0.38, 0.39)	
	10	0.00 (0.00, 0.00)	0.01 (0.01, 0.01)	0.04 (0.04, 0.04)	1.41 (1.39, 1.44)	0.39 (0.38, 0.39)	
	20	0.01 (0.01, 0.01)	0.04 (0.03, 0.04)	0.15 (0.15, 0.16)	1.42 (1.39, 1.44)	0.39 (0.38, 0.40)	
	30	0.03 (0.03, 0.03)	0.15 (0.14, 0.15)	0.45 (0.44, 0.46)	1.43 (1.40, 1.45)	0.39 (0.39, 0.40)	
	40	0.12 (0.12, 0.13)	0.43 (0.42, 0.44)	0.84 (0.82, 0.85)	1.42 (1.40, 1.45)	0.40 (0.39, 0.40)	
	50	0.32 (0.31, 0.33)	0.74 (0.73, 0.76)	1.11 (1.09, 1.13)	1.35 (1.32, 1.37)	0.39 (0.38, 0.40)	
	60	0.45 (0.44, 0.47)	0.85 (0.83, 0.87)	1.06 (1.04, 1.08)	1.11 (1.09, 1.14)	0.34 (0.34, 0.35)	
	70	0.47 (0.46, 0.49)	0.73 (0.70, 0.75)	- (- , -)	0.79 (0.76, 0.81)	0.27 (0.26, 0.27)	
80	0.38 (0.37, 0.40)	- (- , -)	- (- , -)	0.48 (0.45, 0.50)	0.19 (0.18, 0.19)		
White	0	0.00 (0.00, 0.00)	0.00 (0.00, 0.01)	0.01 (0.01, 0.01)	1.43 (1.40, 1.46)	0.37 (0.36, 0.37)	
	10	0.00 (0.00, 0.00)	0.01 (0.01, 0.01)	0.04 (0.03, 0.04)	1.45 (1.42, 1.47)	0.37 (0.36, 0.38)	
	20	0.01 (0.01, 0.01)	0.03 (0.03, 0.04)	0.15 (0.15, 0.16)	1.45 (1.42, 1.48)	0.37 (0.36, 0.38)	
	30	0.02 (0.02, 0.03)	0.14 (0.14, 0.15)	0.45 (0.44, 0.46)	1.46 (1.43, 1.49)	0.38 (0.37, 0.38)	
	40	0.12 (0.12, 0.13)	0.44 (0.42, 0.45)	0.85 (0.83, 0.87)	1.46 (1.43, 1.49)	0.38 (0.37, 0.39)	
	50	0.32 (0.32, 0.33)	0.75 (0.74, 0.77)	1.14 (1.11, 1.16)	1.38 (1.36, 1.41)	0.37 (0.37, 0.38)	
	60	0.46 (0.45, 0.48)	0.87 (0.85, 0.90)	1.09 (1.07, 1.12)	1.14 (1.12, 1.17)	0.33 (0.32, 0.34)	
	70	0.49 (0.47, 0.51)	0.75 (0.72, 0.77)	- (- , -)	0.81 (0.78, 0.83)	0.26 (0.25, 0.27)	
80	0.40 (0.38, 0.42)	- (- , -)	- (- , -)	0.49 (0.46, 0.52)	0.18 (0.18, 0.19)		
Black	0	0.00 (0.00, 0.00)	0.01 (0.00, 0.01)	0.02 (0.01, 0.02)	1.22 (1.16, 1.30)	0.52 (0.50, 0.54)	
	10	0.01 (0.00, 0.01)	0.02 (0.01, 0.02)	0.04 (0.03, 0.05)	1.25 (1.19, 1.33)	0.53 (0.51, 0.56)	
	20	0.01 (0.01, 0.01)	0.03 (0.02, 0.04)	0.15 (0.14, 0.17)	1.26 (1.19, 1.33)	0.54 (0.52, 0.56)	
	30	0.02 (0.02, 0.03)	0.15 (0.13, 0.17)	0.50 (0.47, 0.54)	1.28 (1.21, 1.36)	0.55 (0.53, 0.57)	
	40	0.13 (0.12, 0.15)	0.50 (0.46, 0.53)	0.90 (0.84, 0.95)	1.30 (1.23, 1.38)	0.56 (0.53, 0.58)	
	50	0.39 (0.36, 0.42)	0.82 (0.77, 0.87)	1.12 (1.06, 1.20)	1.25 (1.18, 1.33)	0.54 (0.52, 0.57)	
	60	0.50 (0.45, 0.55)	0.85 (0.79, 0.93)	0.99 (0.91, 1.07)	1.00 (0.93, 1.09)	0.47 (0.45, 0.50)	
	70	0.48 (0.42, 0.54)	0.65 (0.58, 0.73)	- (- , -)	0.68 (0.60, 0.76)	0.33 (0.31, 0.36)	
80	0.32 (0.26, 0.40)	- (- , -)	- (- , -)	0.36 (0.29, 0.46)	0.21 (0.18, 0.24)		

Devcan Version 7.0.0, April 2008, National Cancer Institute (<http://srab.cancer.gov/devcan/>).

Source: Incidence data are from the SEER 17 areas (San Francisco, Connecticut, Detroit, Hawaii, Iowa, New Mexico, Seattle, Utah, Atlanta, San Jose-Monterey, Los Angeles, Alaska Native Registry, Rural Georgia, California excluding SF/SJM/LA, Kentucky, Louisiana and New Jersey). Mortality data are from the NCHS public use data file for the total US.

- Statistic could not be calculated.

A percent or confidence interval value of 0.00 represents a value that is below 0.005.

Table XX-9 - continued
 CANCER OF THE ORAL CAVITY AND PHARYNX (Invasive)

Risk of Being Diagnosed With Cancer in 10, 20 and 30 Years, Lifetime Risk of Being Diagnosed with Cancer, and
 Lifetime Risk of Dying from Cancer Given Cancer Free At Current Age
 Males, 2003-2005 By Race/Ethnicity

Race/ Ethnicity	Current Age	Risk of Being Diagnosed with Cancer				Risk of Dying from Cancer	
		+10 yrs Percent (95% C.I.)	+20 yrs Percent (95% C.I.)	+30 yrs Percent (95% C.I.)	Eventually Percent (95% C.I.)	Eventually Percent (95% C.I.)	
Asian/ Pacific Islander	0	0.00 (0.00, 0.00)	0.00 (0.00, 0.01)	0.01 (0.01, 0.02)	1.06 (0.97, 1.16)	0.40 (0.35, 0.47)	
	10	0.00 (0.00, 0.01)	0.01 (0.01, 0.02)	0.06 (0.05, 0.07)	1.07 (0.98, 1.17)	0.41 (0.36, 0.48)	
	20	0.01 (0.01, 0.02)	0.06 (0.05, 0.07)	0.17 (0.15, 0.19)	1.07 (0.98, 1.17)	0.41 (0.36, 0.48)	
	30	0.05 (0.04, 0.06)	0.16 (0.14, 0.18)	0.36 (0.33, 0.39)	1.06 (0.98, 1.16)	0.41 (0.36, 0.48)	
	40	0.11 (0.10, 0.13)	0.32 (0.29, 0.35)	0.59 (0.54, 0.64)	1.02 (0.94, 1.13)	0.41 (0.36, 0.48)	
	50	0.21 (0.18, 0.23)	0.48 (0.44, 0.53)	0.73 (0.67, 0.79)	0.93 (0.85, 1.03)	0.39 (0.34, 0.46)	
	60	0.29 (0.25, 0.33)	0.54 (0.49, 0.60)	0.72 (0.64, 0.79)	0.76 (0.67, 0.86)	0.35 (0.29, 0.42)	
	70	0.28 (0.24, 0.33)	0.47 (0.41, 0.55)	- (- , -)	0.52 (0.44, 0.62)	0.29 (0.24, 0.37)	
80	0.25 (0.19, 0.32)	- (- , -)	- (- , -)	0.31 (0.23, 0.42)	0.21 (0.15, 0.30)		
American Indian/ Alaska Native ^a	0	0.00 (0.00, 0.05)	0.00 (0.00, 0.05)	0.00 (0.00, 0.05)	0.82 (0.59, 1.49)	0.32 (0.23, 0.54)	
	10	0.00 (0.00, 0.02)	0.00 (0.00, 0.02)	0.02 (0.00, 0.06)	0.84 (0.60, 1.52)	0.33 (0.23, 0.55)	
	20	0.00 (0.00, 0.02)	0.02 (0.00, 0.06)	0.10 (0.06, 0.16)	0.85 (0.61, 1.54)	0.33 (0.23, 0.56)	
	30	0.02 (0.00, 0.05)	0.10 (0.06, 0.17)	0.34 (0.24, 0.47)	0.87 (0.62, 1.57)	0.34 (0.24, 0.57)	
	40	0.09 (0.05, 0.14)	0.33 (0.23, 0.46)	0.64 (0.47, 0.86)	0.88 (0.63, 1.61)	0.35 (0.24, 0.59)	
	50	0.26 (0.17, 0.38)	0.59 (0.42, 0.81)	0.75 (0.54, 1.04)	0.84 (0.58, 1.61)	0.37 (0.25, 0.62)	
	60	0.36 (0.22, 0.56)	0.54 (0.34, 0.83)	0.56 (0.36, 0.90)	0.63 (0.38, 1.48)	0.35 (0.22, 0.63)	
	70	0.22 (0.10, 0.45)	0.24 (0.11, 0.54)	- (- , -)	0.33 (0.12, 1.35)	0.29 (0.16, 0.64)	
80	0.03 (0.00, 0.40)	- (- , -)	- (- , -)	0.16 (0.00, 1.72)	0.23 (0.07, 0.77)		
Hispanic ^b	0	0.00 (0.00, 0.00)	0.00 (0.00, 0.01)	0.01 (0.01, 0.01)	0.98 (0.90, 1.08)	0.30 (0.27, 0.33)	
	10	0.00 (0.00, 0.00)	0.01 (0.01, 0.01)	0.02 (0.02, 0.03)	0.99 (0.91, 1.10)	0.30 (0.27, 0.34)	
	20	0.00 (0.00, 0.01)	0.02 (0.02, 0.02)	0.08 (0.07, 0.09)	1.00 (0.92, 1.10)	0.30 (0.27, 0.34)	
	30	0.02 (0.01, 0.02)	0.08 (0.07, 0.09)	0.24 (0.23, 0.27)	1.00 (0.92, 1.11)	0.31 (0.28, 0.34)	
	40	0.06 (0.05, 0.07)	0.23 (0.21, 0.25)	0.49 (0.45, 0.53)	1.00 (0.92, 1.11)	0.31 (0.28, 0.35)	
	50	0.18 (0.16, 0.19)	0.44 (0.41, 0.48)	0.72 (0.67, 0.78)	0.97 (0.88, 1.08)	0.31 (0.28, 0.35)	
	60	0.29 (0.25, 0.32)	0.58 (0.53, 0.64)	0.75 (0.68, 0.83)	0.85 (0.76, 0.96)	0.29 (0.25, 0.33)	
	70	0.34 (0.30, 0.39)	0.54 (0.47, 0.61)	- (- , -)	0.65 (0.55, 0.77)	0.23 (0.20, 0.28)	
80	0.27 (0.22, 0.34)	- (- , -)	- (- , -)	0.43 (0.32, 0.58)	0.18 (0.14, 0.24)		

Devcan Version 7.0.0, April 2008, National Cancer Institute (<http://srab.cancer.gov/devcan/>).

Source: Incidence data are from the SEER 17 areas (San Francisco, Connecticut, Detroit, Hawaii, Iowa, New Mexico, Seattle, Utah, Atlanta, San Jose-Monterey, Los Angeles, Alaska Native Registry, Rural Georgia, California excluding SF/SJM/LA, Kentucky, Louisiana and New Jersey). Mortality data are from the NCHS public use data file for the total US.

^a Underlying incidence and mortality data for American Indian/Alaska Native are based on the CHSDA (Contract Health Service Delivery Area) counties.

^b Hispanic is not mutually exclusive from whites, blacks, Asian/Pacific Islanders, and American Indians/Alaska Natives. Underlying incidence data for Hispanics are based on NHIA and exclude cases from the Alaska Native Registry and Kentucky. Underlying mortality data for Hispanics exclude deaths from Minnesota, New Hampshire and North Dakota.

- Statistic could not be calculated.

A percent or confidence interval value of 0.00 represents a value that is below 0.005.

Table XX-9 - continued
 CANCER OF THE ORAL CAVITY AND PHARYNX (Invasive)

Risk of Being Diagnosed With Cancer in 10, 20 and 30 Years, Lifetime Risk of Being Diagnosed with Cancer, and
 Lifetime Risk of Dying from Cancer Given Cancer Free At Current Age
 Females, 2003-2005 By Race/Ethnicity

Race/ Ethnicity	Current Age	Risk of Being Diagnosed with Cancer				Risk of Dying from Cancer	
		+10 yrs Percent (95% C.I.)	+20 yrs Percent (95% C.I.)	+30 yrs Percent (95% C.I.)	Eventually Percent (95% C.I.)	Eventually Percent (95% C.I.)	
All Races	0	0.00 (0.00, 0.00)	0.00 (0.00, 0.01)	0.01 (0.01, 0.02)	0.65 (0.63, 0.67)	0.19 (0.18, 0.19)	
	10	0.00 (0.00, 0.00)	0.01 (0.01, 0.01)	0.03 (0.03, 0.04)	0.66 (0.64, 0.67)	0.19 (0.18, 0.19)	
	20	0.01 (0.01, 0.01)	0.03 (0.03, 0.03)	0.07 (0.07, 0.08)	0.66 (0.64, 0.67)	0.19 (0.18, 0.19)	
	30	0.02 (0.02, 0.02)	0.07 (0.06, 0.07)	0.16 (0.15, 0.17)	0.65 (0.63, 0.67)	0.19 (0.18, 0.19)	
	40	0.05 (0.04, 0.05)	0.14 (0.14, 0.15)	0.29 (0.28, 0.30)	0.63 (0.62, 0.65)	0.19 (0.18, 0.19)	
	50	0.10 (0.09, 0.10)	0.25 (0.24, 0.26)	0.43 (0.42, 0.44)	0.60 (0.58, 0.62)	0.19 (0.18, 0.19)	
	60	0.16 (0.15, 0.17)	0.35 (0.34, 0.36)	0.48 (0.47, 0.50)	0.53 (0.51, 0.54)	0.18 (0.17, 0.18)	
	70	0.21 (0.20, 0.22)	0.36 (0.35, 0.38)	- (- , -)	0.41 (0.40, 0.43)	0.15 (0.15, 0.16)	
80	0.20 (0.19, 0.21)	- (- , -)	- (- , -)	0.27 (0.25, 0.28)	0.12 (0.12, 0.13)		
White	0	0.00 (0.00, 0.00)	0.00 (0.00, 0.01)	0.01 (0.01, 0.01)	0.65 (0.63, 0.67)	0.19 (0.18, 0.19)	
	10	0.00 (0.00, 0.00)	0.01 (0.01, 0.01)	0.03 (0.03, 0.03)	0.66 (0.64, 0.68)	0.19 (0.18, 0.19)	
	20	0.01 (0.01, 0.01)	0.03 (0.02, 0.03)	0.07 (0.06, 0.07)	0.66 (0.64, 0.67)	0.19 (0.19, 0.19)	
	30	0.02 (0.02, 0.02)	0.06 (0.06, 0.06)	0.15 (0.15, 0.16)	0.65 (0.63, 0.67)	0.19 (0.19, 0.20)	
	40	0.04 (0.04, 0.05)	0.14 (0.13, 0.14)	0.29 (0.28, 0.30)	0.64 (0.62, 0.66)	0.19 (0.19, 0.20)	
	50	0.10 (0.09, 0.10)	0.25 (0.24, 0.26)	0.44 (0.42, 0.45)	0.61 (0.59, 0.63)	0.19 (0.18, 0.19)	
	60	0.16 (0.16, 0.17)	0.36 (0.34, 0.37)	0.49 (0.48, 0.51)	0.54 (0.52, 0.55)	0.18 (0.18, 0.19)	
	70	0.22 (0.21, 0.23)	0.37 (0.35, 0.38)	- (- , -)	0.42 (0.40, 0.43)	0.16 (0.15, 0.16)	
80	0.20 (0.19, 0.21)	- (- , -)	- (- , -)	0.27 (0.25, 0.28)	0.13 (0.12, 0.13)		
Black	0	0.00 (0.00, 0.00)	0.01 (0.00, 0.01)	0.02 (0.01, 0.02)	0.55 (0.50, 0.59)	0.16 (0.14, 0.17)	
	10	0.00 (0.00, 0.01)	0.02 (0.01, 0.02)	0.04 (0.03, 0.04)	0.56 (0.51, 0.61)	0.16 (0.15, 0.17)	
	20	0.01 (0.01, 0.02)	0.03 (0.02, 0.04)	0.09 (0.08, 0.11)	0.55 (0.51, 0.60)	0.16 (0.15, 0.17)	
	30	0.02 (0.02, 0.03)	0.08 (0.07, 0.09)	0.19 (0.17, 0.21)	0.55 (0.50, 0.60)	0.16 (0.15, 0.17)	
	40	0.06 (0.05, 0.07)	0.17 (0.15, 0.19)	0.31 (0.28, 0.34)	0.54 (0.49, 0.59)	0.16 (0.15, 0.17)	
	50	0.12 (0.10, 0.13)	0.25 (0.23, 0.28)	0.39 (0.35, 0.43)	0.49 (0.45, 0.54)	0.15 (0.14, 0.17)	
	60	0.15 (0.13, 0.18)	0.30 (0.27, 0.34)	0.38 (0.34, 0.43)	0.41 (0.37, 0.46)	0.14 (0.13, 0.15)	
	70	0.18 (0.15, 0.21)	0.27 (0.23, 0.32)	- (- , -)	0.31 (0.27, 0.36)	0.11 (0.10, 0.12)	
80	0.14 (0.11, 0.18)	- (- , -)	- (- , -)	0.20 (0.15, 0.25)	0.08 (0.07, 0.10)		

Devcan Version 7.0.0, April 2008, National Cancer Institute (<http://srab.cancer.gov/devcan/>).

Source: Incidence data are from the SEER 17 areas (San Francisco, Connecticut, Detroit, Hawaii, Iowa, New Mexico, Seattle, Utah, Atlanta, San Jose-Monterey, Los Angeles, Alaska Native Registry, Rural Georgia, California excluding SF/SJM/LA, Kentucky, Louisiana and New Jersey). Mortality data are from the NCHS public use data file for the total US.

- Statistic could not be calculated.

A percent or confidence interval value of 0.00 represents a value that is below 0.005.

Table XX-9 - continued
 CANCER OF THE ORAL CAVITY AND PHARYNX (Invasive)

Risk of Being Diagnosed With Cancer in 10, 20 and 30 Years, Lifetime Risk of Being Diagnosed with Cancer, and
 Lifetime Risk of Dying from Cancer Given Cancer Free At Current Age
 Females, 2003-2005 By Race/Ethnicity

Race/ Ethnicity	Current Age	Risk of Being Diagnosed with Cancer				Risk of Dying from Cancer	
		+10 yrs Percent (95% C.I.)	+20 yrs Percent (95% C.I.)	+30 yrs Percent (95% C.I.)	Eventually Percent (95% C.I.)	Eventually Percent (95% C.I.)	
Asian/ Pacific Islander	0	0.00 (0.00, 0.00)	0.01 (0.00, 0.01)	0.02 (0.01, 0.03)	0.67 (0.60, 0.76)	0.25 (0.20, 0.33)	
	10	0.00 (0.00, 0.01)	0.02 (0.01, 0.03)	0.05 (0.04, 0.06)	0.68 (0.60, 0.77)	0.25 (0.20, 0.33)	
	20	0.02 (0.01, 0.02)	0.05 (0.04, 0.06)	0.10 (0.08, 0.11)	0.67 (0.60, 0.77)	0.25 (0.20, 0.33)	
	30	0.03 (0.02, 0.04)	0.08 (0.07, 0.09)	0.16 (0.14, 0.18)	0.66 (0.59, 0.75)	0.25 (0.20, 0.33)	
	40	0.05 (0.04, 0.06)	0.13 (0.11, 0.15)	0.25 (0.22, 0.28)	0.63 (0.56, 0.72)	0.25 (0.20, 0.33)	
	50	0.08 (0.06, 0.09)	0.20 (0.17, 0.23)	0.34 (0.31, 0.38)	0.59 (0.51, 0.68)	0.25 (0.19, 0.32)	
	60	0.13 (0.11, 0.15)	0.27 (0.24, 0.31)	0.45 (0.39, 0.51)	0.52 (0.45, 0.62)	0.24 (0.18, 0.31)	
	70	0.16 (0.13, 0.19)	0.34 (0.29, 0.40)	- (- , -)	0.42 (0.35, 0.52)	0.22 (0.16, 0.30)	
	80	0.22 (0.17, 0.27)	- (- , -)	- (- , -)	0.31 (0.24, 0.42)	0.21 (0.15, 0.31)	
American Indian/ Alaska Native ^a	0	0.00 (0.00, 0.05)	0.00 (0.00, 0.05)	0.00 (0.00, 0.05)	0.54 (0.35, 1.07)	0.16 (0.10, 0.31)	
	10	0.00 (0.00, 0.02)	0.00 (0.00, 0.02)	0.01 (0.00, 0.04)	0.55 (0.36, 1.08)	0.16 (0.10, 0.31)	
	20	0.00 (0.00, 0.02)	0.01 (0.00, 0.04)	0.08 (0.04, 0.14)	0.55 (0.36, 1.09)	0.16 (0.10, 0.32)	
	30	0.01 (0.00, 0.04)	0.08 (0.04, 0.14)	0.17 (0.11, 0.26)	0.55 (0.36, 1.10)	0.16 (0.10, 0.32)	
	40	0.07 (0.04, 0.13)	0.17 (0.10, 0.26)	0.31 (0.20, 0.47)	0.56 (0.36, 1.11)	0.17 (0.10, 0.33)	
	50	0.10 (0.05, 0.17)	0.25 (0.15, 0.40)	0.38 (0.24, 0.60)	0.50 (0.31, 1.07)	0.17 (0.11, 0.34)	
	60	0.16 (0.08, 0.30)	0.30 (0.17, 0.52)	0.42 (0.24, 0.71)	0.43 (0.24, 1.03)	0.17 (0.10, 0.35)	
	70	0.17 (0.06, 0.36)	0.30 (0.13, 0.61)	- (- , -)	0.30 (0.13, 1.00)	0.15 (0.08, 0.35)	
	80	0.18 (0.04, 0.51)	- (- , -)	- (- , -)	0.18 (0.04, 1.10)	0.07 (0.02, 0.34)	
Hispanic ^b	0	0.00 (0.00, 0.00)	0.00 (0.00, 0.00)	0.01 (0.01, 0.01)	0.44 (0.38, 0.50)	0.12 (0.11, 0.15)	
	10	0.00 (0.00, 0.00)	0.01 (0.01, 0.01)	0.02 (0.01, 0.02)	0.44 (0.39, 0.51)	0.13 (0.11, 0.15)	
	20	0.01 (0.00, 0.01)	0.02 (0.01, 0.02)	0.04 (0.03, 0.05)	0.44 (0.38, 0.51)	0.13 (0.11, 0.15)	
	30	0.01 (0.01, 0.01)	0.03 (0.03, 0.04)	0.09 (0.08, 0.10)	0.43 (0.38, 0.50)	0.13 (0.11, 0.15)	
	40	0.02 (0.02, 0.03)	0.08 (0.07, 0.09)	0.16 (0.14, 0.18)	0.42 (0.37, 0.49)	0.13 (0.11, 0.15)	
	50	0.06 (0.05, 0.07)	0.14 (0.12, 0.16)	0.25 (0.22, 0.28)	0.41 (0.35, 0.48)	0.12 (0.10, 0.15)	
	60	0.08 (0.06, 0.10)	0.20 (0.17, 0.23)	0.31 (0.27, 0.36)	0.36 (0.31, 0.43)	0.12 (0.10, 0.15)	
	70	0.13 (0.11, 0.16)	0.25 (0.21, 0.30)	- (- , -)	0.31 (0.25, 0.38)	0.11 (0.09, 0.14)	
	80	0.15 (0.11, 0.19)	- (- , -)	- (- , -)	0.22 (0.16, 0.31)	0.09 (0.07, 0.13)	

Devcan Version 7.0.0, April 2008, National Cancer Institute (<http://srab.cancer.gov/devcan/>).

Source: Incidence data are from the SEER 17 areas (San Francisco, Connecticut, Detroit, Hawaii, Iowa, New Mexico, Seattle, Utah, Atlanta, San Jose-Monterey, Los Angeles, Alaska Native Registry, Rural Georgia, California excluding SF/SJM/LA, Kentucky, Louisiana and New Jersey). Mortality data are from the NCHS public use data file for the total US.

^a Underlying incidence and mortality data for American Indian/Alaska Native are based on the CHSDA (Contract Health Service Delivery Area) counties.

^b Hispanic is not mutually exclusive from whites, blacks, Asian/Pacific Islanders, and American Indians/Alaska Natives. Underlying incidence data for Hispanics are based on NHIA and exclude cases from the Alaska Native Registry and Kentucky. Underlying mortality data for Hispanics exclude deaths from Minnesota, New Hampshire and North Dakota.

- Statistic could not be calculated.

A percent or confidence interval value of 0.00 represents a value that is below 0.005.

Table XX-10a
CANCER OF THE ORAL CAVITY AND PHARYNX (Invasive)

SEER INCIDENCE AND U.S. MORTALITY
AGE-ADJUSTED RATES AND TRENDS^a
 By Race/Ethnicity and Sex

<u>SEER Incidence</u>	Rate 2001-2005 ^b			Seer 13 Areas ^c Trend 1996-2005 AAPC (%)			SEER 9 Areas ^d Trend 1996-2005 AAPC (%)		
	Rate per 100,000 persons			Total	Males	Females	Total	Males	Females
	Total	Males	Females	Total	Males	Females	Total	Males	Females
RACE/ETHNICITY									
All Races	10.4	15.5	6.1	-1.4*	-1.6*	-1.3*	-1.2*	-1.4*	-1.0*
White	10.6	15.7	6.1	-1.2*	-1.3*	-1.5*	-0.9*	-1.2*	-1.0*
White Hispanic ^e	6.3	9.6	3.6	-2.1*	-2.3*	-2.3*	-	-	-
White Non-Hispanic ^e	11.2	16.6	6.6	-0.9*	-1.0*	-1.2*	-	-	-
Black	10.8	17.2	5.9	-2.7*	-3.4*	-1.0	-2.5*	-3.3*	-1.3*
Asian/Pacific Islander	7.8	10.5	5.4	-1.3*	-1.7*	-0.5	-	-	-
Amer Ind/Alaska Nat ^f	7.1	9.7	4.9	-3.7*	-	-	-	-	-
Hispanic ^e	6.2	9.4	3.6	-2.0*	-2.1*	-2.3*	-	-	-
<u>U.S. Mortality^g</u>									
	Rate 2001-2005			Trend 1996-2005 ^h					
	Rate per 100,000 persons			AAPC (%)					
	Total	Males	Females	Total	Males	Females			
RACE/ETHNICITY									
All Races	2.6	4.0	1.5	-2.2*	-2.3*	-2.4*			
White	2.5	3.8	1.5	-1.9*	-2.0*	-2.2*			
White Hispanic ^e	1.7	2.7	0.8	-3.2*	-3.9*	-1.8			
White Non-Hispanic ^e	2.6	3.9	1.5	-1.7*	-1.8*	-2.0*			
Black	3.7	6.7	1.6	-3.7*	-2.7*	-4.0*			
Asian/Pacific Islander	2.2	3.3	1.4	-2.5*	-2.9*	-1.4			
Amer Ind/Alaska Nat									
Total U.S.	2.0	3.2	1.1	-2.2*	-2.0	-			
CHSDA Counties	2.4	3.8	1.3	-2.7*	-	-			
Non-CHSDA Counties	1.5	2.4	0.7	-	-	-			
Hispanic ^e	1.6	2.6	0.8	-3.2*	-3.9*	-1.9			

The AAPC is the Average Annual Percent Change over the time interval. The AAPCs are calculated by the Joinpoint Regression Program Version 3.3, April 2008, National Cancer Institute.

Statistic not shown. Rate based on less than 16 cases for the time interval. Trend based on less than 10 cases for at least one year within the time interval.

Rates are age-adjusted to the 2000 US Std Population (19 age groups - Census P25-1130). Trends are based on rates age-adjusted to the 2000 US Std Population (19 age groups - Census P25-1130).

Incidence data used in calculating the 2001-2005 rates are from the SEER 17 areas (San Francisco, Connecticut, Detroit, Hawaii, Iowa, New Mexico, Seattle, Utah, Atlanta, San Jose-Monterey, Los Angeles, Alaska Native Registry, Rural Georgia, California excluding SF/SJM/LA, Kentucky, Louisiana and New Jersey).

The SEER 13 areas are San Francisco, Connecticut, Detroit, Hawaii, Iowa, New Mexico, Seattle, Utah, Atlanta, San Jose-Monterey, Los Angeles, Alaska Native Registry and Rural Georgia. The 1996-2005 AAPC trends are based on a Joinpoint analysis using diagnosis years 1992-2005.

The SEER 9 areas are San Francisco, Connecticut, Detroit, Hawaii, Iowa, New Mexico, Seattle, Utah, and Atlanta. The 1996-2005 AAPC trends are based on a Joinpoint analysis using diagnosis years 1975-2005.

Hispanic and Non-Hispanic are not mutually exclusive from whites, blacks, Asian/Pacific Islanders, and American Indians/Alaska Natives. Incidence data for Hispanics and Non-Hispanics are based on NHIA and exclude cases from the Alaska Native Registry and Kentucky. The 2001-2005 Hispanic and Non-Hispanic death rates exclude deaths from Minnesota, New Hampshire and North Dakota. The 1996-2005 Hispanic and Non-Hispanic mortality trends exclude deaths from Connecticut, Maine, Maryland, Minnesota, New Hampshire, New York, North Dakota, Oklahoma and Vermont.

Incidence data for American Indian/Alaska Native are based on the CHSDA(Contract Health Service Delivery Area) counties.

US Mortality Files, National Center for Health Statistics, CDC.

The 1996-2005 mortality AAPCs are based on a Joinpoint analysis using years of death 1992-2005.

The APC is significantly different from zero (p<.05).

Table XX-10b
CANCER OF THE ORAL CAVITY AND PHARYNX BY SUBSITE (Invasive)

SEER INCIDENCE
AGE-ADJUSTED RATES AND TRENDS^a BY RACE AND SEX

	Site									
	Oral Cavity & Pharynx	Lip	Tongue	Floor of Mouth	Gum & Other Mouth	Oropharynx & Tonsil	Hypophar.	Salivary Gland	Nasophar.	Other Oral Cavity & Pharynx
<u>2001-2005, Rate per 100,000 persons^b</u>										
All Races										
Male and Female	10.4	0.8	2.8	0.7	1.5	1.8	0.7	1.2	0.7	0.2
Male	15.5	1.4	4.1	1.0	1.8	3.0	1.2	1.6	1.0	0.3
Female	6.1	0.4	1.6	0.4	1.3	0.7	0.3	0.9	0.4	0.1
White										
Male and Female	10.6	0.9	2.9	0.7	1.5	1.9	0.7	1.2	0.4	0.2
Male	15.7	1.6	4.3	1.0	1.8	3.1	1.2	1.7	0.6	0.3
Female	6.1	0.4	1.7	0.4	1.3	0.8	0.3	0.9	0.2	0.1
Black										
Male and Female	10.8	0.1	2.4	0.8	1.7	2.3	1.2	1.1	0.7	0.4
Male	17.2	0.2	4.0	1.3	2.4	4.0	2.3	1.2	1.2	0.7
Female	5.9	-	1.2	0.4	1.3	1.0	0.4	1.0	0.4	0.2
<u>Trend 1996-2005^c, APC(%)</u>										
All Races										
Male and Female	-1.6	-6.2	1.2	-5.8	-2.7	1.4	-5.0	-0.1	-1.6	-7.7
Male	-1.7	-7.0	1.3	-5.2	-2.8	1.6	-4.7	-0.6	-1.9	-9.5
Female	-1.6	-3.6	0.7	-7.2	-2.6	-0.2	-6.4	0.2	-1.1	-4.8
White										
Male and Female	-1.3	-6.0	1.8	-5.5	-2.4	2.3	-4.8	-0.6	-1.9	-8.0
Male	-1.3	-6.9	2.1	-4.6	-2.2	2.7	-4.5	-0.9	-2.3	-9.0
Female	-1.8	-3.3	1.0	-7.7	-2.7	-0.1	-6.6	-0.5	-1.4	-6.9
Black										
Male and Female	-3.0		-1.8	-8.6	-3.7	-2.3	-4.1	0.8	-0.9	
Male	-3.9		-2.8	-9.4	-4.1	-2.8	-4.4	-2.8		
Female	-1.1		0.0		-2.6	0.2		4.1		

The APC is the Annual Percent Change over the time interval.

^a Rates are age-adjusted to the 2000 US Std Population (19 age groups - Census P25-1130). Trends are based on rates age-adjusted to the 2000 US Std Population (19 age groups - Census P25-1130).

^b Incidence data used in calculating the rates are from the 17 SEER areas (San Francisco, Connecticut, Detroit, Hawaii, Iowa, New Mexico, Seattle, Utah, Atlanta, San Jose-Monterey, Los Angeles, Alaska Native Registry, Rural Georgia, California excluding SF/SJM/LA, Kentucky, Louisiana and New Jersey).

^c Incidence data used in calculating the trends are from the 13 SEER areas (San Francisco, Connecticut, Detroit, Hawaii, Iowa, New Mexico, Seattle, Utah, Atlanta, San Jose-Monterey, Los Angeles, Alaska Native Registry and Rural Georgia).

- Statistic not shown. Rate based on less than 16 cases for the time interval. Trend based on less than 10 cases for at least one year within the time interval.

* The APC is significantly different from zero ($p < .05$).

Table XX-10c
ORAL CAVITY AND PHARYNGEAL CANCER BY SUBSITE (Invasive)

U.S. MORTALITY^a
AGE-ADJUSTED RATES AND TRENDS^b BY RACE AND SEX

	Site									
	Oral Cavity & Pharynx	Lip	Tongue	Floor of Mouth	Gum & Other Mouth	Oropharynx & Tonsil	Hypophar. Gland	Salivary Gland	Nasophar.	Other Oral Cavity & Pharynx
<u>2001-2005, Rate per 100,000 persons</u>										
All Races										
Male and Female	2.6	0.0	0.6	0.0	0.4	0.4	0.1	0.2	0.2	0.5
Male	4.0	0.0	0.9	0.1	0.5	0.7	0.2	0.4	0.3	0.9
Female	1.5	0.0	0.4	0.0	0.3	0.2	0.0	0.1	0.1	0.3
White										
Male and Female	2.5	0.0	0.6	0.0	0.4	0.4	0.1	0.2	0.2	0.5
Male	3.8	0.0	0.9	0.1	0.5	0.6	0.2	0.4	0.2	0.8
Female	1.5	0.0	0.4	0.0	0.3	0.2	0.0	0.2	0.1	0.2
Black										
Male and Female	3.7	-	0.7	0.1	0.5	0.7	0.2	0.2	0.3	1.1
Male	6.7	-	1.3	0.1	0.8	1.3	0.4	0.2	0.5	2.0
Female	1.6	-	0.3	0.0	0.3	0.3	0.0	0.1	0.2	0.4
<u>Trend 1996-2005 ,APC(%)</u>										
All Races										
Male and Female	-1.9	-4.4	-0.8	-9.0	-4.2	0.0	-5.0	-0.8	-3.2	-1.3
Male	-1.9	-5.8	-0.8	-8.6	-4.8	0.2	-5.2	-0.4	-3.2	-1.2
Female	-2.4	-3.0	-1.1	-10.2	-3.6	-0.8	-5.5	-2.0	-3.3	-2.3
White										
Male and Female	-1.7	-4.5	-0.2	-8.5	-4.0	0.7	-5.0	-0.5	-4.1	-1.2
Male	-1.7	-5.9	-0.4	-8.3	-4.7	1.0	-5.3	0.0	-4.3	-1.1
Female	-2.2	-2.7	-0.4	-9.3	-3.3	-0.5	-5.1	-1.9	-4.1	-2.4
Black										
Male and Female	-3.4		-4.5	-11.0	-5.7	-2.9	-5.2	-4.1	0.0	-1.5
Male	-3.0		-3.6	-9.1	-5.5	-2.7	-4.6	-5.1	1.0	-1.4
Female	-4.5		-6.8		-6.4	-3.1		-3.5	-1.5	-2.0

^a The APC is the Annual Percent Change over the time interval.

^b US Mortality Files, National Center for Health Statistics, Centers for Disease Control and Prevention.

Rates are age-adjusted to the 2000 US Std Population (19 age groups - Census P25-1130). Trends are based on rates age-adjusted to the 2000 US Std Population (19 age groups - Census P25-1130).

- Statistic not shown. Rate based on less than 16 cases for the time interval. Trend based on less than 10 cases for at least one year within the time interval.

* The APC is significantly different from zero (p<.05).

Table XX-11
 CANCER OF THE ORAL CAVITY AND PHARYNX (Invasive)

AGE-ADJUSTED SEER INCIDENCE RATES^a
 By Registry, Race and Sex

	All Races			Whites			Blacks		
	Total	Males	Females	Total	Males	Females	Total	Males	Females
<u>SEER INCIDENCE RATES^a, 2001-2005</u>									
REGISTRY									
Atlanta & Rural Georgia	10.5	15.3	6.6	10.5	15.5	6.2	10.8	15.8	7.3
Atlanta	10.4	15.1	6.6	10.4	15.4	6.2	10.7	15.6	7.3
Rural Georgia	12.5	19.0	7.2	11.6	17.6	6.7	13.7	22.0	-
California	10.1	14.9	6.0	10.4	15.4	6.1	9.9	15.4	5.6
Greater Bay Area	10.1	14.5	6.4	10.3	14.8	6.3	9.8	15.0	5.7
San Francisco-Oakland	10.6	15.1	6.8	10.8	15.3	6.8	10.2	15.4	6.1
San Jose-Monterey	9.1	13.3	5.5	9.3	14.0	5.4	8.4	14.0	-
Los Angeles	9.1	13.4	5.5	9.2	13.6	5.5	10.4	16.8	5.7
Greater California	10.7	15.8	6.2	11.0	16.3	6.2	9.4	14.0	5.4
Connecticut	10.1	14.9	6.1	9.9	14.7	5.9	11.9	17.9	7.7
Detroit	11.9	17.7	7.1	11.8	17.3	7.2	12.4	19.8	6.9
Hawaii	11.0	15.6	6.7	16.7	22.7	10.3	-	-	-
Iowa	11.1	17.0	6.3	10.9	16.7	6.2	11.5	16.3	-
Kentucky	11.6	18.3	6.1	11.6	18.1	6.1	10.8	18.1	5.0
Louisiana	12.2	19.6	6.2	12.3	19.2	6.4	12.1	21.1	5.3
New Jersey	9.7	14.4	5.9	9.6	14.1	5.8	10.6	17.5	5.6
New Mexico	9.4	14.0	5.3	9.8	14.6	5.6	-	-	-
Seattle-Puget Sound	10.9	15.7	6.6	11.3	16.3	6.8	7.9	11.5	-
Utah	8.5	12.0	5.3	8.5	12.1	5.2	-	-	-
9 SEER Areas ^b	10.6	15.5	6.4	10.7	15.7	6.4	10.9	16.7	6.6
11 SEER Areas ^b	10.2	14.9	6.2	10.3	15.2	6.1	10.8	16.6	6.3
13 SEER Areas ^b	10.2	14.9	6.2	10.3	15.2	6.1	10.8	16.7	6.3
17 SEER Areas ^b	10.4	15.5	6.1	10.6	15.7	6.1	10.8	17.2	5.9

^a Rates are per 100,000 and are age-adjusted to the 2000 US Std Population (19 age groups - Census P25-1130)

^b The SEER 9 areas are San Francisco, Connecticut, Detroit, Hawaii, Iowa, New Mexico, Seattle, Utah and Atlanta.

The SEER 11 areas comprise the SEER 9 areas plus San Jose-Monterey and Los Angeles.

The SEER 13 areas comprise the SEER 11 areas plus the Alaska Native Registry and Rural Georgia.

The SEER 17 areas comprise the SEER 13 areas plus California excluding SF/SJM/LA, Kentucky, Louisiana and New Jersey.

- Statistic not shown. Rate based on less than 16 cases for the time interval.

Table XX-12
 CANCER OF THE ORAL CAVITY AND PHARYNX (Invasive)

AGE-ADJUSTED SEER DEATH RATES^a
 By Registry, Race and Sex

	All Races			Whites			Blacks		
	Total	Males	Females	Total	Males	Females	Total	Males	Females
<u>SEER DEATH RATES^a, 2001-2005</u>									
REGISTRY									
Atlanta & Rural Georgia	2.3	3.1	1.7	2.0	2.5	1.5	3.2	4.8	2.0
Atlanta	2.2	2.9	1.6	1.9	2.4	1.5	3.1	4.6	2.0
Rural Georgia	3.7	5.4	-	-	-	-	-	-	-
California	2.7	4.0	1.7	2.7	3.9	1.7	3.7	5.9	2.0
Greater Bay Area	2.6	3.7	1.6	2.4	3.3	1.6	3.5	5.4	2.0
San Francisco-Oakland	2.8	4.1	1.8	2.6	3.6	1.7	3.7	5.6	2.1
San Jose-Monterey	2.0	3.0	1.2	2.0	2.9	1.4	-	-	-
Los Angeles	2.6	3.9	1.5	2.4	3.7	1.4	4.2	7.0	2.2
Greater California	2.8	4.1	1.8	2.9	4.2	1.8	3.3	5.1	1.8
Connecticut	2.2	3.5	1.1	2.1	3.4	1.1	3.3	5.7	-
Detroit	2.8	4.4	1.5	2.5	3.9	1.5	3.7	6.7	1.5
Hawaii	3.0	4.4	1.7	4.4	6.0	2.7	-	-	-
Iowa	2.5	3.6	1.5	2.4	3.5	1.5	-	-	-
Kentucky	2.9	4.6	1.5	2.8	4.4	1.5	4.4	8.2	-
Louisiana	3.5	5.8	1.7	3.1	5.0	1.6	4.6	8.7	1.7
New Jersey	2.5	3.8	1.4	2.3	3.5	1.4	3.9	6.6	2.0
New Mexico	1.9	2.8	1.1	1.9	2.8	1.1	-	-	-
Seattle-Puget Sound	2.9	4.3	1.8	2.9	4.3	1.8	-	-	-
Utah	1.8	2.5	1.1	1.8	2.5	1.1	-	-	-
9 SEER Areas ^b	2.5	3.7	1.5	2.4	3.5	1.5	3.3	5.5	1.7
11 SEER Areas ^b	2.5	3.7	1.5	2.4	3.5	1.4	3.5	5.9	1.8
13 SEER Areas ^b	2.5	3.7	1.5	2.4	3.5	1.4	3.5	5.9	1.8
17 SEER Areas ^b	2.7	4.0	1.6	2.6	3.8	1.5	3.8	6.5	1.8
Total U.S.	2.6	4.0	1.5	2.5	3.8	1.5	3.7	6.7	1.6

^a US Mortality Files, National Center for Health Statistics, Centers for Disease Control and Prevention. Rates are per 100,000 and are age-adjusted to the 2000 US Std Population (19 age groups - Census P25-1130).

^b The SEER 9 areas are San Francisco, Connecticut, Detroit, Hawaii, Iowa, New Mexico, Seattle, Utah and Atlanta.

The SEER 11 areas comprise the SEER 9 areas plus San Jose-Monterey and Los Angeles.

The SEER 13 areas comprise the SEER 11 areas plus the Alaska Native Registry and Rural Georgia.

The SEER 17 areas comprise the SEER 13 areas plus California excluding SF/SJM/LA, Kentucky, Louisiana and New Jersey.

- Statistic not shown. Rate based on less than 16 cases for the time interval.

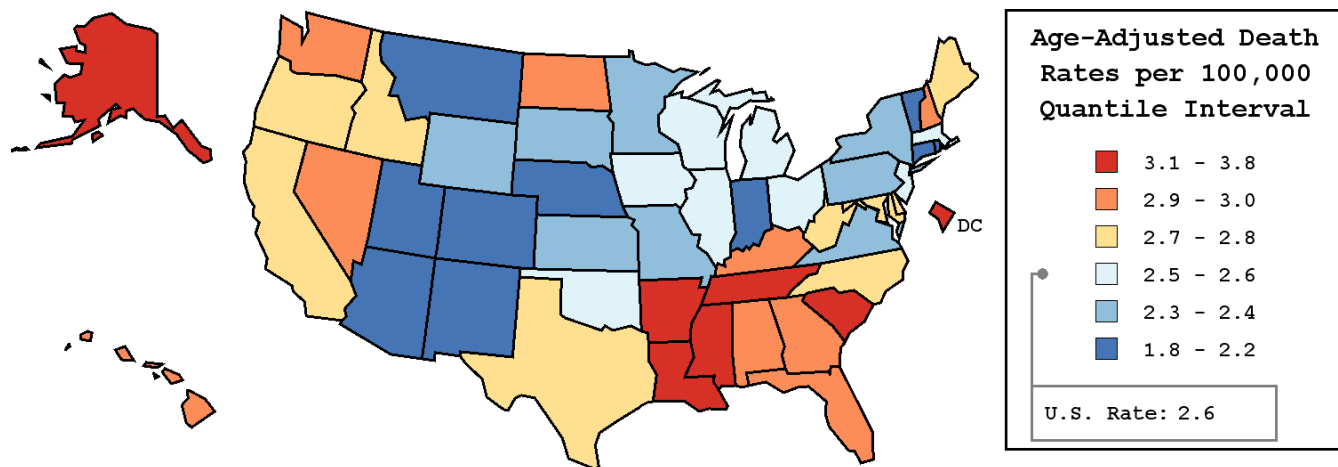
Table XX-13
 CANCER OF THE ORAL CAVITY AND PHARYNX (Invasive)

AVERAGE ANNUAL AGE-ADJUSTED CANCER DEATH^a RATES BY STATE, ALL RACES, 2001-2005

Males and Females

State	Rate	SE	Rank	PD
TOTAL U.S.	2.6	0.01		
High Five States				
D.C.	3.8	0.36	(01)	46.2 ^c
Mississippi	3.6 ^b	0.16	(02)	38.5 ^c
Louisiana	3.5 ^b	0.13	(03)	34.6 ^c
South Carolina	3.3 ^b	0.12	(04)	26.9 ^c
Alaska	3.2	0.43	(05)	23.1 ^c
Low Five States				
Montana	2.1	0.20	(47)	-19.2 ^c
Vermont	2.1	0.25	(48)	-19.2 ^c
Nebraska	2.0 ^b	0.15	(49)	-23.1 ^c
New Mexico	1.9 ^b	0.14	(50)	-26.9 ^c
Utah	1.8 ^b	0.14	(51)	-30.8 ^c

State	Rate	SE	Rank	PD	State	Rate	SE	Rank	PD
Alabama	2.9	0.11	(12)	11.5	Montana	2.1	0.20	(47)	-19.2 ^c
Alaska	3.2	0.43	(05)	23.1 ^c	Nebraska	2.0 ^b	0.15	(49)	-23.1 ^c
Arizona	2.2 ^b	0.09	(43)	-15.4 ^c	Nevada	3.0	0.17	(10)	15.4 ^c
Arkansas	3.1	0.14	(07)	19.2 ^c	New Hampshire	3.0	0.22	(08)	15.4 ^c
California	2.7	0.04	(22)	3.8	New Jersey	2.5	0.07	(32)	-3.8
Colorado	2.1 ^b	0.11	(46)	-19.2 ^c	New Mexico	1.9 ^b	0.14	(50)	-26.9 ^c
Connecticut	2.2 ^b	0.11	(45)	-15.4 ^c	New York	2.4 ^b	0.05	(38)	-7.7
Delaware	2.7	0.25	(21)	3.8	North Carolina	2.8	0.08	(18)	7.7
D.C.	3.8	0.36	(01)	46.2 ^c	North Dakota	2.9	0.29	(15)	11.5
Florida	2.9 ^b	0.05	(16)	11.5	Ohio	2.6	0.07	(26)	0.0
Georgia	2.9	0.09	(14)	11.5	Oklahoma	2.6	0.12	(27)	0.0
Hawaii	3.0	0.21	(09)	15.4 ^c	Oregon	2.7	0.12	(19)	3.8
Idaho	2.7	0.20	(20)	3.8	Pennsylvania	2.4 ^b	0.06	(36)	-7.7
Illinois	2.5	0.06	(31)	-3.8	Rhode Island	2.2	0.20	(42)	-15.4 ^c
Indiana	2.2 ^b	0.08	(44)	-15.4 ^c	South Carolina	3.3 ^b	0.12	(04)	26.9 ^c
Iowa	2.5	0.12	(33)	-3.8	South Dakota	2.3	0.23	(41)	-11.5
Kansas	2.3	0.13	(40)	-11.5	Tennessee	3.1 ^b	0.10	(06)	19.2 ^c
Kentucky	2.9	0.12	(13)	11.5	Texas	2.7	0.05	(24)	3.8
Louisiana	3.5 ^b	0.13	(03)	34.6 ^c	Utah	1.8 ^b	0.14	(51)	-30.8 ^c
Maine	2.8	0.19	(17)	7.7	Vermont	2.1	0.25	(48)	-19.2 ^c
Maryland	2.7	0.10	(25)	3.8	Virginia	2.4	0.08	(37)	-7.7
Massachusetts	2.6	0.09	(30)	0.0	Washington	3.0	0.10	(11)	15.4 ^c
Michigan	2.6	0.07	(28)	0.0	West Virginia	2.7	0.16	(23)	3.8
Minnesota	2.3	0.10	(39)	-11.5	Wisconsin	2.6	0.09	(29)	0.0
Mississippi	3.6 ^b	0.16	(02)	38.5 ^c	Wyoming	2.4	0.31	(35)	-7.7
Missouri	2.4	0.09	(34)	-7.7					



^a US Mortality Files, National Center for Health Statistics, Centers for Disease Control and Prevention. Rates are per 100,000 and are age-adjusted to the 2000 US Std Population (19 age groups - Census P25-1130).
^b Difference between state rate and total U.S. rate is statistically significant ($p \leq .0002$).
^c Absolute percent difference between state rate and total U.S. rate is 15% or more.
 SE Standard error of the rate.
 PD Percent difference between state rate and total U.S. rate.

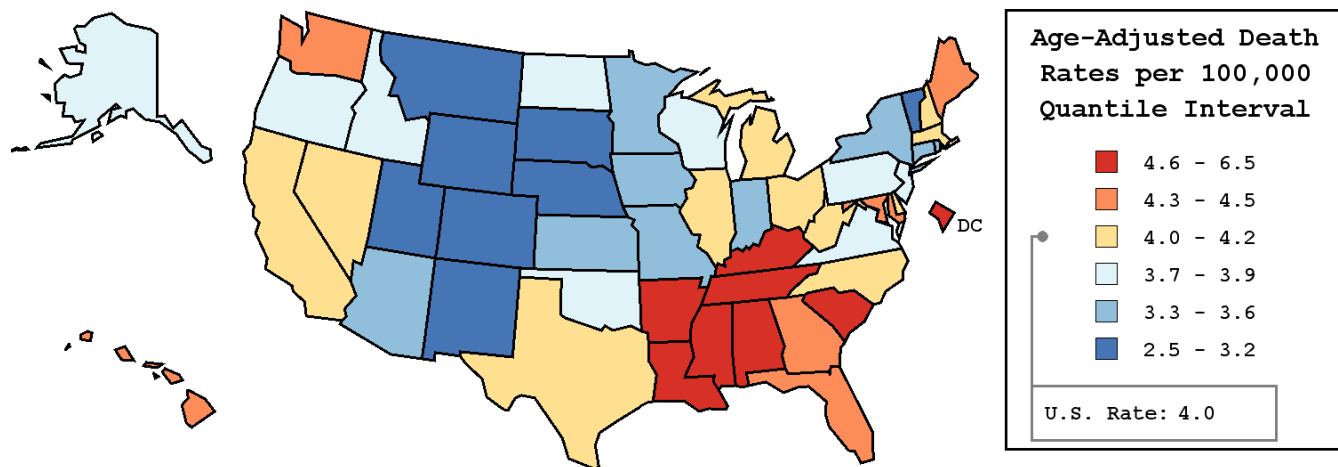
Table XX-14
 CANCER OF THE ORAL CAVITY AND PHARYNX (Invasive)

AVERAGE ANNUAL AGE-ADJUSTED CANCER DEATH^a RATES BY STATE, ALL RACES, 2001-2005

Males

State	Rate	SE	Rank	PD
TOTAL U.S.	4.0	0.03		
High Five States				
D.C.	6.5	0.73	(01)	62.5 ^c
Mississippi	5.8 ^b	0.31	(02)	45.0 ^c
Louisiana	5.8 ^b	0.25	(03)	45.0 ^c
South Carolina	5.5 ^b	0.24	(04)	37.5 ^c
Arkansas	5.3 ^b	0.29	(05)	32.5 ^c
Low Five States				
Colorado	3.0 ^b	0.19	(47)	-25.0 ^c
Montana	2.9	0.35	(48)	-27.5 ^c
Wyoming	2.8	0.49	(49)	-30.0 ^c
New Mexico	2.8 ^b	0.26	(50)	-30.0 ^c
Utah	2.5 ^b	0.26	(51)	-37.5 ^c

State	Rate	SE	Rank	PD	State	Rate	SE	Rank	PD
Alabama	4.7	0.22	(07)	17.5 ^c	Montana	2.9	0.35	(48)	-27.5 ^c
Alaska	3.9	0.69	(29)	-2.5	Nebraska	3.1	0.28	(46)	-22.5 ^c
Arizona	3.5	0.16	(40)	-12.5	Nevada	4.2	0.30	(17)	5.0
Arkansas	5.3 ^b	0.29	(05)	32.5 ^c	New Hampshire	4.2	0.39	(15)	5.0
California	4.0	0.08	(24)	0.0	New Jersey	3.8	0.14	(32)	-5.0
Colorado	3.0 ^b	0.19	(47)	-25.0 ^c	New Mexico	2.8 ^b	0.26	(50)	-30.0 ^c
Connecticut	3.5	0.21	(38)	-12.5	New York	3.6 ^b	0.09	(35)	-10.0
Delaware	4.2	0.47	(18)	5.0	North Carolina	4.1	0.15	(20)	2.5
D.C.	6.5	0.73	(01)	62.5 ^c	North Dakota	3.9	0.50	(27)	-2.5
Florida	4.3	0.10	(12)	7.5	Ohio	4.1	0.13	(21)	2.5
Georgia	4.3	0.17	(14)	7.5	Oklahoma	3.9	0.22	(28)	-2.5
Hawaii	4.4	0.38	(10)	10.0	Oregon	3.7	0.21	(34)	-7.5
Idaho	3.9	0.37	(26)	-2.5	Pennsylvania	3.8	0.11	(31)	-5.0
Illinois	4.0	0.12	(23)	0.0	Rhode Island	3.4	0.37	(43)	-15.0 ^c
Indiana	3.5	0.16	(41)	-12.5	South Carolina	5.5 ^b	0.24	(04)	37.5 ^c
Iowa	3.6	0.22	(36)	-10.0	South Dakota	3.1	0.41	(45)	-22.5 ^c
Kansas	3.5	0.24	(39)	-12.5	Tennessee	5.0 ^b	0.20	(06)	25.0 ^c
Kentucky	4.6	0.23	(08)	15.0 ^c	Texas	4.2	0.10	(16)	5.0
Louisiana	5.8 ^b	0.25	(03)	45.0 ^c	Utah	2.5 ^b	0.26	(51)	-37.5 ^c
Maine	4.5	0.37	(09)	12.5	Vermont	3.2	0.47	(44)	-20.0 ^c
Maryland	4.3	0.20	(11)	7.5	Virginia	3.7	0.16	(33)	-7.5
Massachusetts	4.0	0.17	(22)	0.0	Washington	4.3	0.18	(13)	7.5
Michigan	4.0	0.13	(25)	0.0	West Virginia	4.1	0.29	(19)	2.5
Minnesota	3.4	0.18	(42)	-15.0 ^c	Wisconsin	3.8	0.17	(30)	-5.0
Mississippi	5.8 ^b	0.31	(02)	45.0 ^c	Wyoming	2.8	0.49	(49)	-30.0 ^c
Missouri	3.6	0.16	(37)	-10.0					



^a US Mortality Files, National Center for Health Statistics, Centers for Disease Control and Prevention. Rates are per 100,000 and are age-adjusted to the 2000 US Std Population (19 age groups - Census P25-1130).
^b Difference between state rate and total U.S. rate is statistically significant ($p \leq .0002$).
^c Absolute percent difference between state rate and total U.S. rate is 15% or more.
 SE Standard error of the rate.
 PD Percent difference between state rate and total U.S. rate.

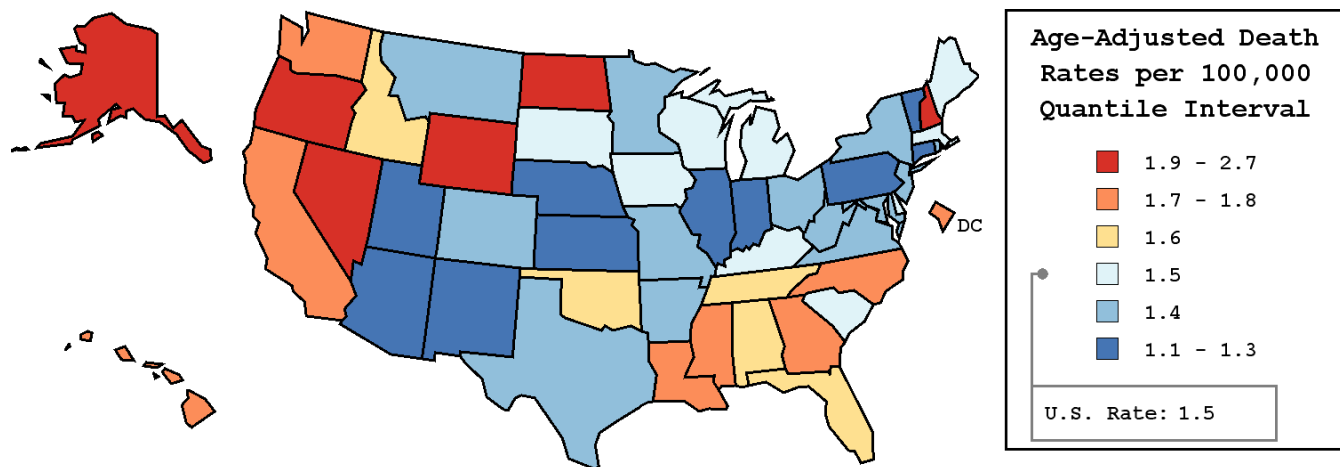
Table XX-15
 CANCER OF THE ORAL CAVITY AND PHARYNX (Invasive)

AVERAGE ANNUAL AGE-ADJUSTED CANCER DEATH^a RATES BY STATE, ALL RACES, 2001-2005

Females

State	Rate	SE	Rank	PD
TOTAL U.S.	1.5	0.01		
High Five States				
Alaska	2.7	0.54	(01)	80.0 ^c
North Dakota	2.1	0.33	(02)	40.0 ^c
New Hampshire	2.1	0.24	(03)	40.0 ^c
Wyoming	1.9	0.37	(04)	26.7 ^c
Oregon	1.9	0.13	(05)	26.7 ^c
Low Five States				
Vermont	1.2	0.25	(47)	-20.0 ^c
New Mexico	1.1	0.15	(48)	-26.7 ^c
Nebraska	1.1	0.15	(49)	-26.7 ^c
Connecticut	1.1 ^b	0.10	(50)	-26.7 ^c
Utah	1.1	0.15	(51)	-26.7 ^c

State	Rate	SE	Rank	PD	State	Rate	SE	Rank	PD
Alabama	1.6	0.11	(17)	6.7	Montana	1.4	0.23	(34)	-6.7
Alaska	2.7	0.54	(01)	80.0 ^c	Nebraska	1.1	0.15	(49)	-26.7 ^c
Arizona	1.2 ^b	0.09	(46)	-20.0 ^c	Nevada	1.9	0.19	(06)	26.7 ^c
Arkansas	1.4	0.13	(37)	-6.7	New Hampshire	2.1	0.24	(03)	40.0 ^c
California	1.7 ^b	0.04	(13)	13.3	New Jersey	1.4	0.07	(29)	-6.7
Colorado	1.4	0.11	(35)	-6.7	New Mexico	1.1	0.15	(48)	-26.7 ^c
Connecticut	1.1 ^b	0.10	(50)	-26.7 ^c	New York	1.4	0.05	(38)	-6.7
Delaware	1.5	0.25	(23)	0.0	North Carolina	1.7	0.08	(11)	13.3
D.C.	1.8	0.33	(09)	20.0 ^c	North Dakota	2.1	0.33	(02)	40.0 ^c
Florida	1.6	0.05	(18)	6.7	Ohio	1.4	0.06	(33)	-6.7
Georgia	1.8	0.09	(08)	20.0 ^c	Oklahoma	1.6	0.12	(19)	6.7
Hawaii	1.7	0.21	(12)	13.3	Oregon	1.9	0.13	(05)	26.7 ^c
Idaho	1.6	0.21	(16)	6.7	Pennsylvania	1.3 ^b	0.06	(44)	-13.3
Illinois	1.3	0.06	(42)	-13.3	Rhode Island	1.4	0.21	(39)	-6.7
Indiana	1.2 ^b	0.08	(45)	-20.0 ^c	South Carolina	1.5	0.11	(24)	0.0
Iowa	1.5	0.13	(20)	0.0	South Dakota	1.5	0.24	(28)	0.0
Kansas	1.3	0.13	(43)	-13.3	Tennessee	1.6	0.10	(15)	6.7
Kentucky	1.5	0.11	(22)	0.0	Texas	1.4	0.05	(30)	-6.7
Louisiana	1.7	0.12	(14)	13.3	Utah	1.1	0.15	(51)	-26.7 ^c
Maine	1.5	0.18	(25)	0.0	Vermont	1.2	0.25	(47)	-20.0 ^c
Maryland	1.4	0.09	(41)	-6.7	Virginia	1.4	0.08	(40)	-6.7
Massachusetts	1.5	0.09	(26)	0.0	Washington	1.8	0.11	(07)	20.0 ^c
Michigan	1.5	0.07	(27)	0.0	West Virginia	1.4	0.15	(36)	-6.7
Minnesota	1.4	0.10	(32)	-6.7	Wisconsin	1.5	0.10	(21)	0.0
Mississippi	1.7	0.14	(10)	13.3	Wyoming	1.9	0.37	(04)	26.7 ^c
Missouri	1.4	0.09	(31)	-6.7					



^a US Mortality Files, National Center for Health Statistics, Centers for Disease Control and Prevention. Rates are per 100,000 and are age-adjusted to the 2000 US Std Population (19 age groups - Census P25-1130).
^b Difference between state rate and total U.S. rate is statistically significant ($p \leq .0002$).
^c Absolute percent difference between state rate and total U.S. rate is 15% or more.
 SE Standard error of the rate.
 PD Percent difference between state rate and total U.S. rate.

Table XX-16
 CANCER OF THE ORAL CAVITY AND PHARYNX (Invasive)

Estimated United States Cancer Prevalence Counts^a on January 1, 2005
 By Race/Ethnicity, Sex and Years Since Diagnosis

Years Since Diagnosis	0 to <5	5 to <10	10 to <15	15 to <20	20 to <25	25 to <30	0 to <15 ^e	0 to <30 ^e	>=30 ^g	Complete ^h
Race/Sex										
All Races ^b	86,675	53,639	34,936	23,293	14,733	10,344	175,251	223,620	16,556	240,176
Males	58,447	34,569	22,553	14,085	8,536	6,197	115,569	144,387	9,772	154,159
Females	28,228	19,070	12,383	9,208	6,197	4,147	59,682	79,233	6,784	86,017
White ^b	74,568	46,949	30,741	20,893	13,144	9,147	152,259	195,443	14,063	209,506
Males	50,805	30,734	20,145	12,834	7,822	5,644	101,684	127,984	8,385	136,369
Females	23,763	16,215	10,596	8,059	5,322	3,503	50,575	67,459	5,678	73,137
Black ^b	7,446	3,675	2,426	1,442	936	683	13,546	16,606	824	17,430
Males	4,649	2,054	1,326	758	379	252	8,028	9,417	325	9,742
Females	2,797	1,621	1,100	684	557	431	5,518	7,189	499	7,688
Asian/Pacific Islander ^c	3,074	1,909	1,124	+	+	+	6,106	+	+	+
Males	1,933	1,154	678	+	+	+	3,764	+	+	+
Females	1,141	755	446	+	+	+	2,342	+	+	+
Hispanic ^d	3,721	2,315	1,397	+	+	+	7,433	+	+	+
Males	2,395	1,468	765	+	+	+	4,629	+	+	+
Females	1,326	847	632	+	+	+	2,804	+	+	+

Estimated prevalence percent^a on January 1, 2005, of the SEER 11 population diagnosed in the previous 15 years
 By Age at Prevalence, Race/Ethnicity and Sex

Age at Prevalence	Age Specific (Crude)										Age-Adjusted ^f
	All Ages	0-9	10-19	20-29	30-39	40-49	50-59	60-69	70-79	80+	All Ages
Race/Sex											
All Races ^c	0.0542%	0.0003%	0.0019%	0.0058%	0.0137%	0.0423%	0.1109%	0.1844%	0.2284%	0.2059%	0.0557%
Males	0.0719%	0.0002%	0.0017%	0.0052%	0.0141%	0.0556%	0.1641%	0.2755%	0.3382%	0.3056%	0.0800%
Females	0.0368%	0.0004%	0.0021%	0.0064%	0.0134%	0.0291%	0.0605%	0.1025%	0.1444%	0.1509%	0.0354%
White ^c	0.0575%	0.0003%	0.0019%	0.0056%	0.0121%	0.0403%	0.1120%	0.1928%	0.2423%	0.2146%	0.0570%
Males	0.0769%	-	0.0015%	0.0047%	0.0125%	0.0537%	0.1679%	0.2871%	0.3594%	0.3253%	0.0825%
Females	0.0381%	0.0003%	0.0023%	0.0066%	0.0117%	0.0266%	0.0573%	0.1058%	0.1506%	0.1543%	0.0352%
Black ^c	0.0356%	-	0.0022%	0.0056%	0.0135%	0.0367%	0.1035%	0.1498%	0.1592%	0.1076%	0.0442%
Males	0.0455%	-	0.0034%	0.0066%	0.0123%	0.0419%	0.1508%	0.2360%	0.2361%	0.1351%	0.0620%
Females	0.0266%	-	-	0.0047%	0.0146%	0.0321%	0.0643%	0.0823%	0.1084%	0.0943%	0.0308%
Asian/Pacific Islander ^c	0.0489%	-	0.0016%	0.0066%	0.0203%	0.0568%	0.1018%	0.1458%	0.1676%	0.1754%	0.0505%
Males	0.0620%	-	-	0.0071%	0.0224%	0.0764%	0.1392%	0.2130%	0.2299%	0.2295%	0.0683%
Females	0.0366%	-	0.0020%	0.0061%	0.0184%	0.0388%	0.0692%	0.0893%	0.1224%	0.1395%	0.0359%
Hispanic ^d	0.0174%	-	0.0010%	0.0029%	0.0072%	0.0207%	0.0546%	0.1013%	0.1408%	0.1360%	0.0312%
Males	0.0209%	-	0.0009%	0.0022%	0.0070%	0.0241%	0.0768%	0.1459%	0.2063%	0.2069%	0.0436%
Females	0.0138%	-	0.0012%	0.0037%	0.0074%	0.0172%	0.0337%	0.0638%	0.0934%	0.0951%	0.0216%

^a US 2005 cancer prevalence counts are based on 2005 cancer prevalence proportions from the SEER registries and 1/1/2005 US population estimates based on the average of 2004 and 2005 population estimates from the US Bureau of the Census. Prevalence was calculated using the First Malignant Primary Only for a person.

^{b c d} Statistics based on (b) SEER 9 Areas (c) SEER 11 Areas and Rural Georgia (d) NHIA for Hispanic for SEER 11 Areas and Rural Georgia.

^e Maximum limited-duration prevalence: 30 years for 1975-2005 SEER 9 data; 15 years for 1990-2005 SEER 11 data (used to calculate prevalence for Hispanics and Asian Pacific Islanders).

^f Percentages are age-adjusted to the 2000 US Standard Population (19 age groups - Census P25-1130) by 5-year age groups.

^{g h} (g) Cases diagnosed more than 30 years ago were estimated using the completeness index method (Capocaccia et. al. 1997, Merrill et. al. 2000). (h) Complete prevalence is obtained by summing 0 to <30 and >=30.

- Statistic not shown. Statistic based on fewer than 5 cases estimated alive in SEER for the time interval.

+ Not available.

SEER Incidence, Delay Adjusted Incidence and US Death Rates^a Cancer of the Oral Cavity and Pharynx, by Race and Sex

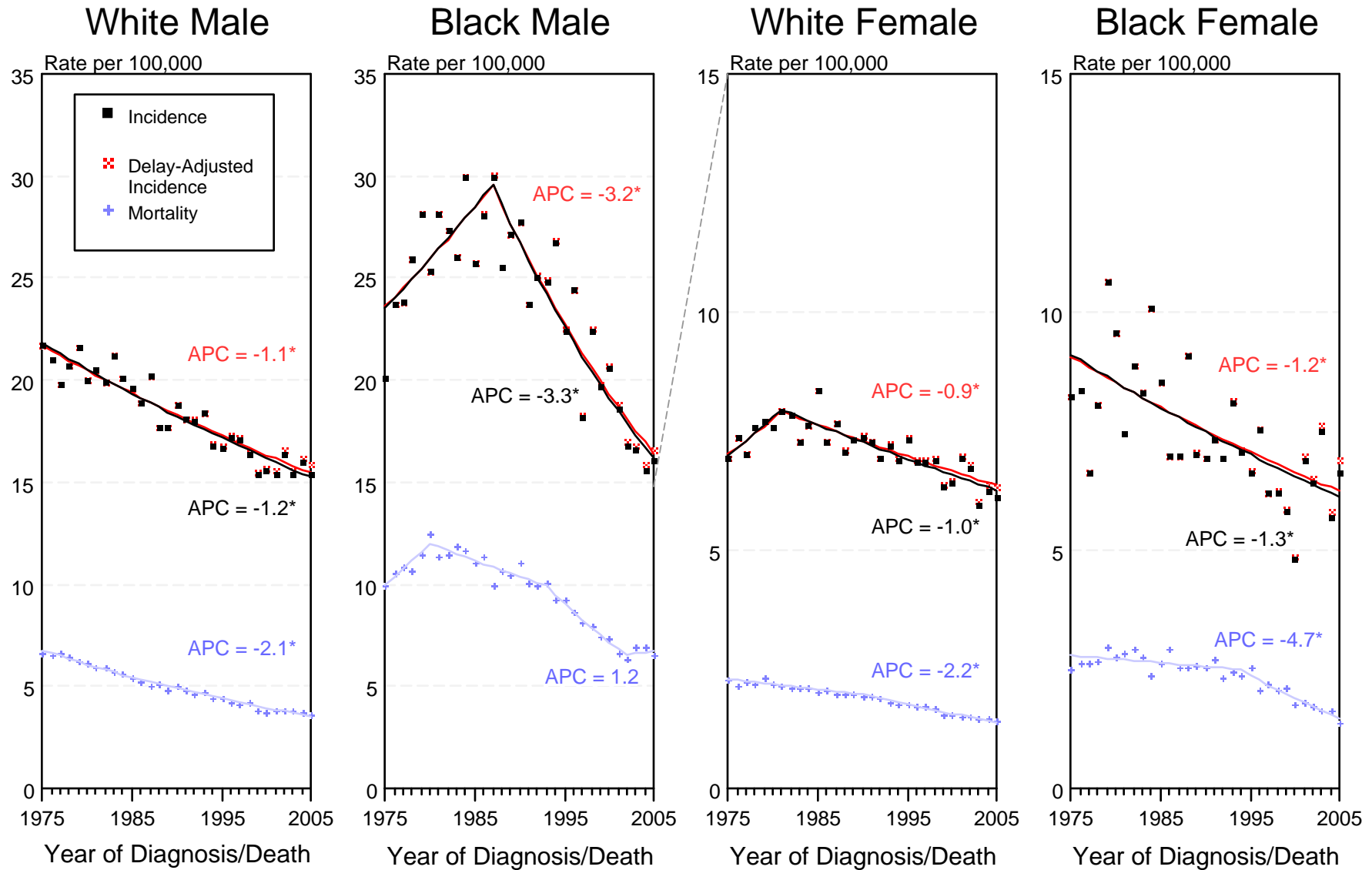


Figure XX-1

^a Source: SEER 9 areas and US Mortality Files (National Center for Health Statistics, CDC). Rates are age-adjusted to the 2000 US Std Population (19 age groups - Census P25-1103). Regression lines and APCs are calculated using the Joinpoint Regression Program Version 3.3.1, April 2008, National Cancer Institute. The APC is the Annual Percent Change for the regression line segments. The APC shown on the graph is for the most recent trend.
* The APC is significantly different from zero ($p < 0.05$).

SEER Incidence and US Death Rates^a Cancer of the Oral Cavity and Pharynx, Both Sexes

Joinpoint Analyses for Whites and Blacks from 1975-2005
and for Asian/Pacific Islanders, American Indians/Alaska Natives and Hispanics from 1992-2005

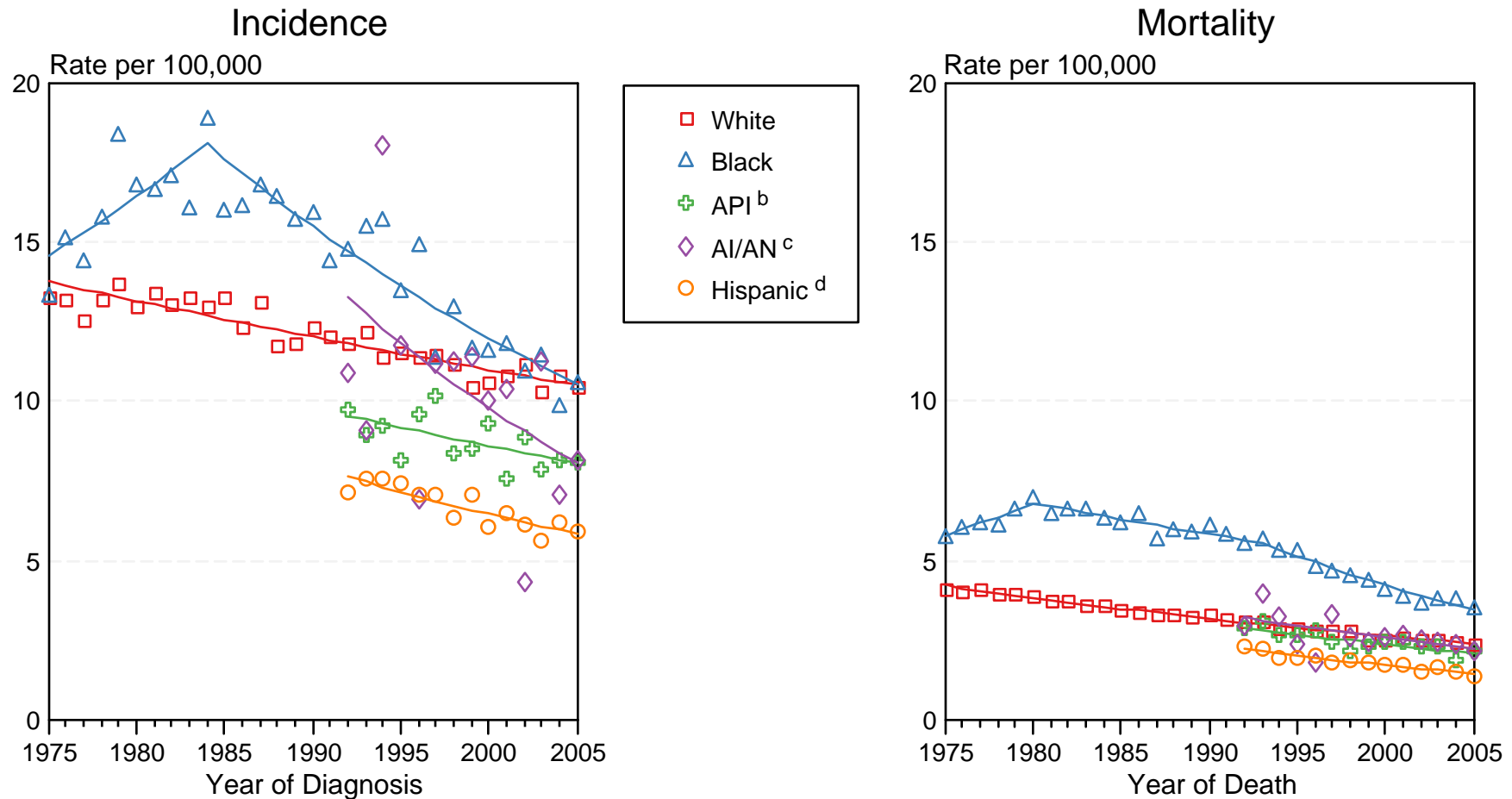


Figure XX-2

Source: Incidence data for whites and blacks are from the SEER 9 areas (San Francisco, Connecticut, Detroit, Hawaii, Iowa, New Mexico, Seattle, Utah, Atlanta). Incidence data for Asian/Pacific Islanders, American Indians/Alaska Natives and Hispanics are from the SEER 13 Areas (SEER 9 Areas, San Jose-Monterey, Los Angeles, Alaska Native Registry and Rural Georgia). Mortality data are from US Mortality Files, National Center for Health Statistics, CDC.

^a Rates are age-adjusted to the 2000 US Std Population (19 age groups - Census P25-1103).

Regression lines are calculated using the Joinpoint Regression Program Version 3.3.1, April 2008, National Cancer Institute. Joinpoint analyses for Whites and Blacks during the 1975-2005 period allow a maximum of 4 joinpoints. Analyses for other ethnic groups during the period 1992-2005 allow a maximum of 3 joinpoints.

^b API = Asian/Pacific Islander.

^c AI/AN = American Indian/Alaska Native. Rates for American Indian/Alaska Native are based on the CHSDA(Contract Health Service Delivery Area) counties.

^d Hispanic is not mutually exclusive from whites, blacks, Asian/Pacific Islanders, and American Indians/Alaska Natives. Incidence data for Hispanics are based on NHIA and exclude cases from the Alaska Native Registry. Mortality data for Hispanics exclude cases from Connecticut, Maine, Maryland, Minnesota, New Hampshire, New York, North Dakota, Oklahoma, and Vermont.

SEER Incidence Rates^a

Cancer of the Oral Cavity and Pharyngeal for Selected Subsites, Both Sexes

Joinpoint Analyses for Whites and Blacks from 1975-2005

and for Asian/Pacific Islanders, American Indians/Alaska Natives and Hispanics from 1992-2005

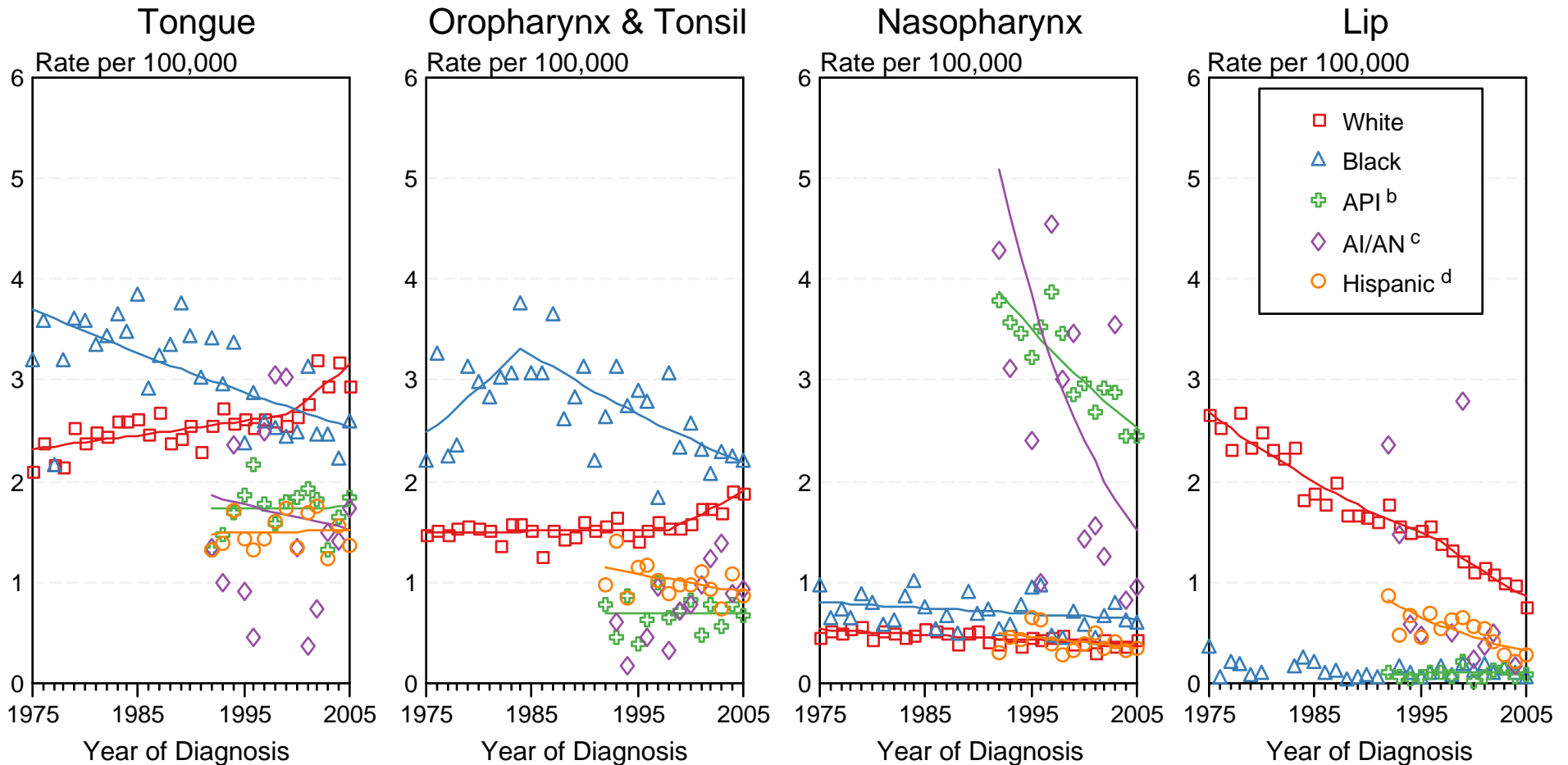


Figure XX-3

Source: Incidence data for whites and blacks are from the SEER 9 areas (San Francisco, Connecticut, Detroit, Hawaii, Iowa, New Mexico, Seattle, Utah, Atlanta).

Incidence data for Asian/Pacific Islanders, American Indians/Alaska Natives and Hispanics are from the SEER 13 Areas (SEER 9 Areas, San Jose-Monterey, Los Angeles, Alaska Native Registry and Rural Georgia).

^a Rates are age-adjusted to the 2000 US Std Population (19 age groups - Census P25-1103).

Regression lines are calculated using the Joinpoint Regression Program Version 3.3.1, April 2008, National Cancer Institute. Joinpoint analyses for Whites and Blacks during the 1975-2005 period allow a maximum of 4 joinpoints. Analyses for other ethnic groups during the period 1992-2005 allow a maximum of 3 joinpoints. Regression lines could not be calculated for data series that had at least one diagnosis year with a 0 case count.

^b API = Asian/Pacific Islander.

^c AI/AN = American Indian/Alaska Native. Rates for American Indian/Alaska Native are based on the CHSDA (Contract Health Service Delivery Area) counties.

^d Hispanic is not mutually exclusive from whites, blacks, Asian/Pacific Islanders, and American Indians/Alaska Natives. Incidence data for Hispanics are based on NHIA and exclude cases from the Alaska Native Registry.