

For release 10:00 a.m. (EDT) Thursday, June 10, 2010

USDL-10-0775

Technical Information: (202) 691-5618 • dipsweb@bls.gov • www.bls.gov/lpc
Media Contact: (202) 691-5902 • PressOffice@bls.gov

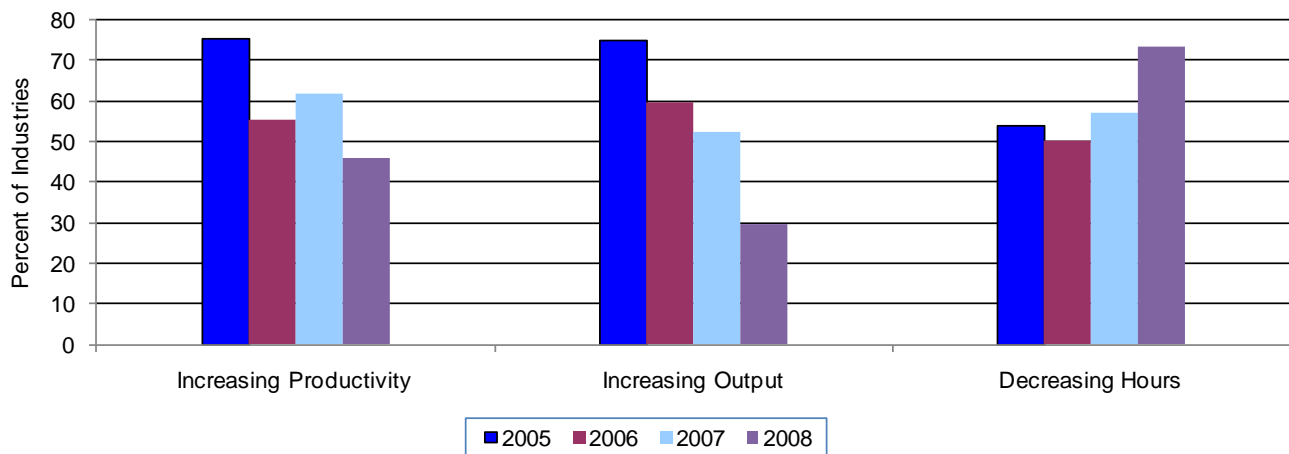
NOTE: This release was reissued on Friday, July 9, 2010 to correct errors in measures of employment, hours, and productivity for agriculture, construction, and mining machinery manufacturing (NAICS 3331) and machinery manufacturing (NAICS 333). Other minor corrections have been made to measures for the following industries: NAICS 321, 3219, 482111, 491, 4911, 541921, 561311, 56172. Corrections have been made to tables 1 and 2; no changes were required to the text and the charts in the news release.

**PRODUCTIVITY AND COSTS BY INDUSTRY:
MANUFACTURING, MINING, AND SELECTED SERVICE-PROVIDING INDUSTRIES, 2008**

Labor productivity – defined as output per hour – rose in 46 percent of the 138 detailed manufacturing, mining, and service-providing industries studied in 2008, the U.S. Bureau of Labor Statistics reported today. This was down from the 62 percent that recorded productivity increases the previous year. **Unit labor costs**, which reflect the total labor costs required to produce a unit of output, declined in 30 percent of the industries, compared to 20 percent in 2007.

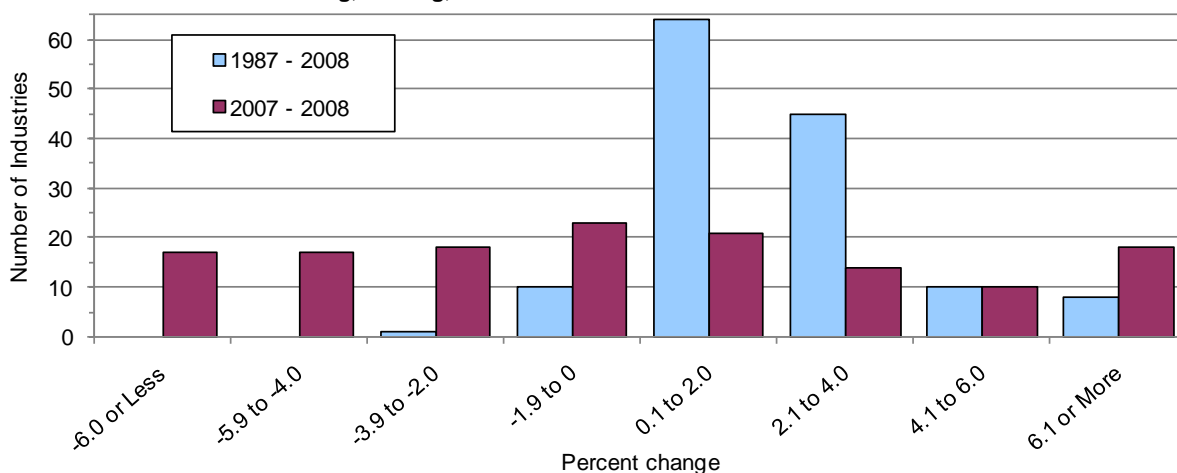
Fewer industries recorded productivity increases in 2008 than in any other year since 1988. Output rose in fewer industries and hours declined in more industries in 2008 compared to 2007. Output rose in 41 of the 138 industries examined, compared to 72 in 2007; hours declined in 101, compared to 79 industries in 2007. The percent of industries with output increases declined each year from 2005 to 2008, with the largest drop occurring in 2008. (See chart 1.) The percent of industries with declining hours rose each year from 2006 to 2008, with the largest increase occurring in 2008.

Chart 1. Percent of manufacturing, mining, and service-providing industries with increases in productivity and output and decreases in hours, 2005-2008



Over the 1987 to 2008 period, labor productivity increased in 92 percent of the industries. Unit labor costs declined in 18 percent of the industries. (See table 2.) Chart 2 shows a more negative distribution of productivity growth rates for the industries studied in the most recent year compared to those for the longer-term period from 1987 to 2008.

Chart 2. Distribution of annual percent change in output per hour, 1987-2008 and 2007-2008: 138 industries in manufacturing, mining, and services



With this release, productivity and cost measures are published for the first time for general freight trucking, local (NAICS 48411) and for general freight trucking (NAICS 4841). The latter combines the previously published measures for long-distance general freight trucking with the new measures for local freight trucking. Trends in the local freight trucking industry are strongly affected by business cycles and the overall economic environment. While productivity in this industry declined slightly in 2008, between 1994 and 2008 productivity increased at an average rate of 3.1 percent per year. The widespread adoption of onboard computer systems, satellite-based tracking, and wireless internet have contributed to substantial increases in efficiency in this industry.

Industry labor productivity measures are updated as data become available. Productivity data through 2008 for industries in wholesale and retail trade were published on August 28, 2009 and can be found on the BLS Labor Productivity and Costs web site at www.bls.gov/lpc.

Manufacturing

Labor productivity increased in 35 of the 86 detailed manufacturing industries in 2008, compared with 51 in 2007. (See table 1.) Productivity growth was highest in the computer and electronic products subsector, led by the computer and peripheral equipment and magnetic media manufacturing and reproduction industries. Output rose in only 20 percent of the industries, compared to 45 percent in 2007, while hours declined in 78 percent of the industries, compared to 64 percent in 2007. However, unit labor costs declined in a greater number of industries than in the previous year – about 23 percent of the industries in 2008, compared to 14 percent in 2007.

Service-Providing

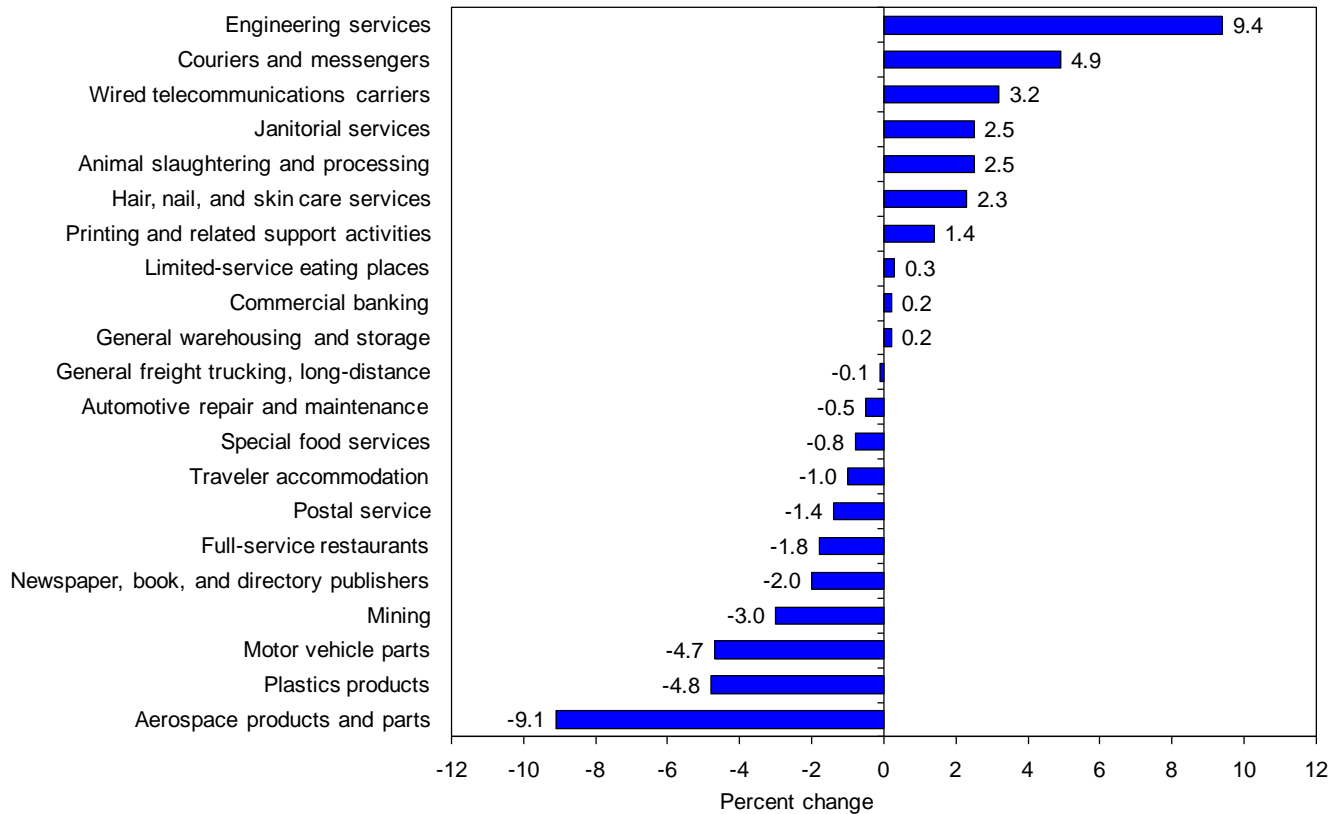
Labor productivity rose in slightly fewer of the measured service-providing industries in 2008 than in 2007. Led by wireless telecommunications carriers and employment placement agencies, labor productivity increased in 26 of the 47 detailed service-providing industries studied in 2008, compared with 32 in 2007. Output rose in 43 percent of the service-providing industries in 2008, compared to 64 percent in 2007, while labor hours declined in 70 percent, compared to 49 percent in 2007. Unit labor costs declined in 43 percent of the service-providing industries in 2008, compared to 32 percent in 2007.

Mining

Labor productivity in the overall mining sector fell 3.0 percent in 2008, an improvement over the 7.6 percent decline in 2007. Although productivity fell or showed little change in the four mining extraction industries, productivity grew rapidly in support activities for mining, where output rose sharply while hours increased only modestly. Unit labor costs fell in only one of the five mining industries in 2008.

The chart below shows the change in productivity in the largest (those with employment over 500,000) manufacturing and service industries and in the overall mining sector. Among these industries, engineering services recorded the largest productivity increase and aerospace products and parts had the largest decline.

Chart 3. Percent change in output per hour in the largest (by employment) manufacturing, mining, and service-providing industries, 2007-2008



Year-to-year movements in industry productivity measures may be erratic, particularly in smaller industries. The annual measures based on sample data may differ from measures generated by a census of establishments in the industry. Annual changes in an industry’s output and use of labor may reflect cyclical changes in the economy as well as long-term trends. As a result, long-term productivity changes tend to be more reliable indicators of industry performance than year-to-year changes.

Technical Note

Labor Productivity: The industry labor productivity measures describe the relationship between industry output and the labor time involved in its production. They show the changes from period to period in the amount of goods and services produced per hour. Although the labor productivity measures relate output to hours of all persons in an industry, they do not measure the specific contribution of labor or any other factor of production. Rather, they reflect the joint effects of many influences, including changes in technology; capital investment; utilization of capacity, energy, and materials; the use of purchased services inputs, including contract employment services; the organization of production; managerial skill; and the characteristics and effort of the workforce.

Output: Industry output is measured as an annual-weighted index of the changes in the various products or services (in real terms) provided for sale outside the industry. Real industry output is usually derived by deflating nominal sales or values of production using BLS price indexes, but for some industries it is measured by physical quantities of output. For manufacturing industries, industry output reflects sectoral value of production, derived by adjusting shipments for changes in inventories and removing intra-industry transactions.

Industry output measures are constructed primarily using data from the economic censuses and annual surveys of the Census Bureau, U.S. Department of Commerce, together with information on price changes primarily from BLS. Output measures for some mining and utilities industries are based on physical quantity data from the Energy Information Administration, U.S. Department of Energy, while output measures for some transportation industries are based on physical quantity data from the Bureau of Transportation Statistics, U.S. Department of Transportation. Other data sources for some industries include the U.S. Geological Survey, U.S. Department of the Interior; the U.S. Postal Service; the Postal Rate Commission; and the Federal Deposit Insurance Corporation.

Labor Hours: The primary source of data on industry employment and hours is the BLS Current Employment Statistics (CES) survey. The CES provides monthly data on the number of total and production or nonsupervisory worker jobs held by wage and salary workers in nonfarm establishments, as well as data on the average weekly hours of production or nonsupervisory workers in those establishments. CES data are supplemented or further disaggregated for some industries using data from the BLS Quarterly Census of Employment and Wages (QCEW), the Bureau of the Census, or other sources. Data from the Current Population Survey (CPS) also supplement the CES data. CPS data are used to estimate employment and hours of self-employed and unpaid family workers in each industry. Data from the CPS, together with the CES data, are also used to estimate the historical average weekly hours of nonproduction or supervisory workers for each industry. Other sources of employment and hours data for some service industries include the Association of American Railroads, the U.S. Department of Transportation, and the U.S. Postal Service. Hours of all persons in an industry are treated as homogeneous and are directly aggregated.

Unit Labor Costs: Unit labor costs represent the cost of labor required to produce one unit of output. The unit labor cost indexes are computed by dividing an index of industry labor compensation by an index of real industry output. Unit labor costs also describe the relationship between compensation per hour and real output per hour (labor productivity). Increases in hourly compensation increase unit labor costs; increases in labor productivity offset compensation increases and lower unit labor costs.

Compensation, defined as payroll plus supplemental payments, is a measure of the cost to the employer of securing the services of labor. Payroll includes salaries, wages, commissions, dismissal pay, bonuses, vacation and sick leave pay, and compensation in kind. Supplemental payments include legally required expenditures and payments for voluntary programs. The legally required portion consists primarily of Federal old age and survivors' insurance, unemployment compensation, and workers' compensation. Payments for voluntary programs include all programs not specifically required by legislation, such as the employer portion of private health insurance and pension plans.

Revisions: This news release incorporates data from the Census Bureau's 2007 Economic Census and the annual benchmark revision of the BLS Current Employment Statistics (CES) survey published in February 2010. Although labor productivity and cost data for manufacturing industries were published on a NAICS 2007 basis in

December 2009, this is the first release of productivity measures for the service-providing and mining industries classified according to the 2007 NAICS. Series for some industries may have changed as a result. All industry labor productivity and cost series are now on a NAICS 2007 basis.

The mining industry measures have been revised to include, for the first time, the output of nonemployer firms and the employment, hours, and labor compensation of self-employed and unpaid family workers. Although small, the revision reflects a more complete accounting of the economic activity in each industry, and improves consistency with the measures for other sectors that account for the activity of these firms and workers.

All of the measures for 2008 in this release are preliminary and subject to revision.

Additional Information: Measures for the two added industries were developed using standard BLS methods as described above. While the rates of change reported by BLS in this news release are rounded to one decimal place, all industry productivity percent changes are calculated using index numbers to three decimal places.

Three industries that were previously available on the BLS web site are also included in this release: coin-operated laundries and drycleaners (NAICS 812310); drycleaning and laundry services (except coin-operated) (NAICS 812320); and linen and uniform supply (NAICS 81233).

Industry productivity and related indexes and rates of change can be accessed online by visiting the Labor Productivity and Costs web site at <http://www.bls.gov/lpc>. Levels of industry employment, hours, labor compensation, and value of production, and the implicit price deflator for output for these industries are available upon request by calling the Division of Industry Productivity Studies (202-691-5618) or by sending a request by e-mail to dipsweb@bls.gov. Information in this report will be made available to sensory-impaired individuals upon request. Voice phone: 202-691-5618; TDD message referral phone number: 1-800-877-8339.

To subscribe to the industry productivity program's electronic notification service, send an e-mail to dipsnews@bls.gov with the word "subscribe" in the subject line.

Table 1. Percent change in output per hour, output, hours, compensation, and unit labor costs, 2007-2008

NAICS code	Industry	2008 Employment (thousands)	Percent change, 2007-2008				
			Output per hour	Output	Hours	Labor compensation	Unit labor costs
Mining Industries							
21	Mining	725	-3.0	0.9	4.0	13.4	12.4
211	Oil and gas extraction	161	-9.0	1.5	11.6	17.7	15.9
2111	Oil and gas extraction	161	-9.0	1.5	11.6	17.7	15.9
212	Mining, except oil and gas	230	-0.7	-1.4	-0.7	5.2	6.7
2121	Coal mining	82	-5.7	2.2	8.4	12.2	9.7
2122	Metal ore mining	40	-3.4	6.9	10.6	16.1	8.6
2123	Nonmetallic mineral mining and quarrying	108	0.1	-10.7	-10.8	-6.8	4.4
213	Support activities for mining	334	23.8	29.3	4.4	15.0	-11.0
2131	Support activities for mining	334	23.8	29.3	4.4	15.0	-11.0
Utilities							
2211	Power generation and supply	404	-4.1	-1.6	2.6	3.7	5.4
2212	Natural gas distribution	107	0.8	1.0	0.2	3.5	2.5
Manufacturing							
311	Food	1511	-0.4	-0.6	-0.1	1.7	2.3
3111	Animal food	53	-6.0	-0.6	5.8	3.0	3.6
3112	Grain and oilseed milling	62	-3.7	1.4	5.3	4.0	2.5
3113	Sugar and confectionery products	74	-7.7	-8.2	-0.6	-5.5	3.0
3114	Fruit and vegetable preserving and specialty	173	-2.3	-2.5	-0.1	0.6	3.1
3115	Dairy products	132	7.9	2.3	-5.2	5.6	3.2
3116	Animal slaughtering and processing	514	2.5	1.6	-0.9	0.4	-1.2
3117	Seafood product preparation and packaging	39	-12.8	-13.6	-1.0	-5.2	9.8
3118	Bakeries and tortilla manufacturing	300	-7.5	-5.1	2.6	5.0	10.7
3119	Other food products	164	1.4	-0.1	-1.5	0.4	0.5
312	Beverages and tobacco products	200	-2.5	-6.9	-4.5	1.6	9.1
3121	Beverages	179	0.1	-5.3	-5.4	2.9	8.6
3122	Tobacco and tobacco products	22	-13.0	-10.6	2.7	-4.6	6.7
313	Textile mills	161	-1.6	-15.6	-14.2	-12.6	3.5
3131	Fiber, yarn, and thread mills	37	1.3	-13.4	-14.5	-14.8	-1.6
3132	Fabric mills	72	5.3	-13.5	-17.8	-12.0	1.7
3133	Textile and fabric finishing mills	52	-14.7	-22.2	-8.8	-11.8	13.3
314	Textile product mills	163	-3.2	-8.6	-5.7	-5.2	3.8
3141	Textile furnishings mills	82	-2.6	-12.6	-10.2	-4.9	8.8
3149	Other textile product mills	81	-0.5	-1.1	-0.6	-5.4	-4.4
315	Apparel	221	-1.8	-13.7	-12.1	-10.4	3.9
3151	Apparel knitting mills	32	-3.4	-15.0	-12.0	-15.2	-0.2
3152	Cut and sew apparel	172	-1.6	-13.2	-11.9	-9.2	4.6
3159	Accessories and other apparel	17	0.0	-14.6	-14.6	-13.1	1.8
316	Leather and allied products	36	3.6	-5.7	-9.0	-3.1	2.8
3161	Leather and hide tanning and finishing	5	-2.7	-12.3	-9.9	-0.5	13.5
3162	Footwear	17	18.1	11.6	-5.5	2.6	-8.1
3169	Other leather products	15	-4.8	-16.5	-12.2	-8.4	9.7
321	Wood products	486	-2.0	-14.3	-12.5	-11.3	3.4
3211	Sawmills and wood preservation	106	3.5	-9.4	-12.5	-5.6	4.2
3212	Plywood and engineered wood products	90	-4.0	-18.3	-14.9	-15.6	3.3
3219	Other wood products	290	-3.4	-14.6	-11.6	-11.7	3.4
322	Paper and paper products	446	-0.6	-4.3	-3.7	-1.0	3.5
3221	Pulp, paper, and paperboard mills	127	0.5	-4.1	-4.6	-0.8	3.4
3222	Converted paper products	319	-1.2	-4.5	-3.4	-1.0	3.6
323	Printing and related support activities	623	1.4	-6.0	-7.3	-6.3	-0.4
3231	Printing and related support activities	623	1.4	-6.0	-7.3	-6.3	-0.4
324	Petroleum and coal products	118	-3.0	0.6	3.7	0.0	-0.6
3241	Petroleum and coal products	118	-3.0	0.6	3.7	0.0	-0.6
325	Chemicals	855	-6.7	-9.6	-3.1	-0.4	10.1
3251	Basic chemicals	153	-15.1	-12.3	3.4	1.9	16.1
3252	Resin, rubber, and artificial fibers	104	-8.5	-13.2	-5.2	-1.0	14.0
3253	Agricultural chemicals	37	-1.1	-8.6	-7.6	1.5	11.0
3254	Pharmaceuticals and medicines	292	-1.3	-4.2	-2.9	-0.6	3.8
3255	Paints, coatings, and adhesives	62	-4.0	-9.1	-5.3	-1.8	8.0
3256	Soaps, cleaning compounds, and toiletries	112	-5.6	-9.6	-4.3	1.2	12.0
3259	Other chemical products and preparations	96	0.8	-6.0	-6.7	-5.4	0.6
326	Plastics and rubber products	734	-5.3	-9.2	-4.2	-4.9	4.8
3261	Plastics products	589	-4.8	-8.8	-4.2	-5.2	3.9
3262	Rubber products	145	-7.5	-11.4	-4.2	-3.7	8.7

Table 1. Percent change in output per hour, output, hours, compensation, and unit labor costs, 2007-2008

NAICS code	Industry	2008 Employment (thousands)	Percent change, 2007-2008				
			Output per hour	Output	Hours	Labor compensation	Unit labor costs
327	Nonmetallic mineral products	481	-4.5	-11.9	-7.7	-4.0	9.0
3271	Clay products and refractories	57	-1.4	-9.4	-8.1	-7.7	1.8
3272	Glass and glass products	104	-4.0	-3.5	0.5	1.1	4.8
3273	Cement and concrete products	223	-7.1	-17.6	-11.3	-5.4	14.8
3274	Lime and gypsum products	18	-1.7	-7.2	-5.6	-1.7	5.8
3279	Other nonmetallic mineral products	79	1.2	-6.1	-7.2	-4.8	1.4
331	Primary metals	443	4.9	0.0	-4.7	2.3	2.3
3311	Iron and steel mills and ferroalloy production	100	8.5	6.7	-1.7	7.5	0.8
3312	Steel products from purchased steel	62	-4.6	-7.9	-3.5	6.9	16.1
3313	Alumina and aluminum production	66	-1.6	-9.4	-8.0	1.6	12.2
3314	Other nonferrous metal production	67	4.6	2.1	-2.4	0.5	-1.6
3315	Foundries	148	-7.1	-13.4	-6.8	-3.7	11.2
332	Fabricated metal products	1550	1.4	-3.2	-4.6	0.7	4.1
3321	Forging and stamping	107	0.1	-3.6	-3.7	1.7	5.5
3322	Cutlery and hand tools	49	-3.3	-11.8	-8.8	-2.2	10.9
3323	Architectural and structural metals	412	-0.9	-4.5	-3.7	0.0	4.8
3324	Boilers, tanks, and shipping containers	98	-2.1	-2.4	-0.3	8.7	11.3
3325	Hardware	30	7.7	-13.8	-19.9	-6.0	9.0
3326	Spring and wire products	53	4.3	-6.6	-10.4	-3.3	3.5
3327	Machine shops and threaded products	370	3.7	-0.9	-4.4	1.0	1.9
3328	Coating, engraving, and heat treating metals	145	1.2	-0.1	-1.3	-1.2	-1.2
3329	Other fabricated metal products	286	4.0	-2.0	-5.8	0.9	2.9
333	Machinery	1201	-1.4	-2.0	-0.6	0.9	2.9
3331	Agriculture, construction, and mining machinery	244	2.2	4.0	1.7	5.9	1.8
3332	Industrial machinery	124	-9.7	-13.6	-4.4	-3.8	11.3
3333	Commercial and service industry machinery	105	6.3	-0.4	-6.2	1.0	1.4
3334	HVAC and commercial refrigeration equipment	151	-0.5	-2.9	-2.4	1.5	4.5
3335	Metalworking machinery	195	0.1	0.5	0.4	-2.8	-3.3
3336	Turbine and power transmission equipment	106	-2.7	-0.1	2.7	5.2	5.3
3339	Other general purpose machinery	277	-4.3	-3.9	0.4	0.3	4.4
334	Computer and electronic products	1255	6.7	6.9	0.3	-3.0	-9.3
3341	Computer and peripheral equipment	185	32.8	35.8	2.2	7.8	-20.6
3342	Communications equipment	130	-4.7	-2.4	2.4	-7.7	-5.5
3343	Audio and video equipment	28	-15.7	-20.2	-5.3	-13.1	8.8
3344	Semiconductors and electronic components	434	4.4	3.1	-1.3	-6.8	-9.6
3345	Electronic instruments	444	2.3	4.3	2.0	-0.2	-4.3
3346	Magnetic media manufacturing and reproduction	35	19.3	3.7	-13.1	-5.7	-9.0
335	Electrical equipment and appliances	429	-2.8	-3.3	-0.5	1.4	4.9
3351	Electric lighting equipment	59	2.0	-3.1	-5.0	-0.2	3.0
3352	Household appliances	71	-3.9	-10.9	-7.3	-6.0	5.4
3353	Electrical equipment	161	-4.2	-0.1	4.2	4.4	4.5
3359	Other electrical equipment and components	138	-2.3	-2.6	-0.3	1.8	4.6
336	Transportation equipment	1622	-5.5	-12.7	-7.7	-4.2	9.8
3361	Motor vehicles	192	-9.3	-19.9	-11.7	-10.4	11.8
3362	Motor vehicle bodies and trailers	142	-5.8	-21.9	-17.1	-15.5	8.2
3363	Motor vehicle parts	550	-4.7	-17.1	-13.0	-9.9	8.7
3364	Aerospace products and parts	508	-9.1	-6.9	2.4	3.3	10.9
3365	Railroad rolling stock	29	16.7	18.0	1.1	2.1	-13.4
3366	Ship and boat building	157	12.9	2.9	-8.9	5.4	2.5
3369	Other transportation equipment	44	3.8	9.0	5.0	2.9	-5.6
337	Furniture and related products	513	3.8	-8.9	-12.2	-9.2	-0.3
3371	Household and institutional furniture	335	4.8	-10.1	-14.2	-10.7	-0.7
3372	Office furniture and fixtures	133	0.9	-5.1	-5.9	-5.7	-0.6
3379	Other furniture-related products	45	2.5	-13.6	-15.7	-11.5	2.4
339	Miscellaneous manufacturing	699	1.6	1.1	-0.4	-0.2	-1.4
3391	Medical equipment and supplies	324	2.7	6.2	3.4	2.1	-3.9
3399	Other miscellaneous manufacturing	375	-0.6	-4.3	-3.7	-2.8	1.6
Transportation and Warehousing							
481	Air transportation	427	-1.4	-3.1	-1.8	-0.6	2.6
482111	Line-haul railroads	184	-1.0	-1.0	0.1	0.8	1.8
4841	General freight trucking	1196	0.2	-3.1	-3.3	-4.3	-1.2
48411	General freight trucking, local	315	-0.1	-5.8	-5.7	-6.2	-0.4
48412	General freight trucking, long-distance	881	-0.1	-2.4	-2.3	-3.6	-1.2
48421	Used household and office goods moving	95	6.5	-5.7	-11.4	-4.4	1.3
491	Postal service	747	-1.4	-4.9	-3.5	-5.1	-0.3
4911	Postal service	747	-1.4	-4.9	-3.5	-5.1	-0.3

Table 1. Percent change in output per hour, output, hours, compensation, and unit labor costs, 2007-2008

NAICS code	Industry	2008 Employment (thousands)	Percent change, 2007-2008				
			Output per hour	Output	Hours	Labor compensation	Unit labor costs
492	Couriers and messengers	612	4.9	-6.2	-10.5	-5.6	0.7
493	Warehousing and storage	681	0.3	4.1	3.8	3.1	-1.0
4931	Warehousing and storage	681	0.3	4.1	3.8	3.1	-1.0
49311	General warehousing and storage	574	0.2	4.6	4.4	2.7	-1.8
49312	Refrigerated warehousing and storage	49	3.0	0.6	-2.3	3.8	3.2
Information							
511	Publishing	912	1.7	-1.3	-2.9	1.3	2.6
5111	Newspaper, book, and directory publishers	648	-2.0	-6.1	-4.1	-2.8	3.4
5112	Software publishers	265	4.3	4.2	-0.1	6.7	2.4
51213	Motion picture and video exhibition	133	-3.3	-2.2	1.1	-0.8	1.5
515	Broadcasting, except internet	328	2.4	0.3	-2.0	-1.4	-1.7
5151	Radio and television broadcasting	241	0.0	-1.0	-1.0	-4.0	-3.1
5152	Cable and other subscription programming	88	6.3	1.8	-4.2	7.0	5.1
5171	Wired telecommunications carriers	683	3.2	2.9	-0.3	0.9	-1.9
5172	Wireless telecommunications carriers	203	18.8	12.8	-5.1	5.0	-6.9
Finance and Insurance							
52211	Commercial banking	1358	0.2	0.7	0.5	-2.4	-3.0
Real Estate and Rental and Leasing							
532111	Passenger car rental	124	4.9	-4.0	-8.4	-9.0	-5.3
53212	Truck, trailer, and RV rental and leasing	60	-4.7	-5.5	-0.8	3.1	9.1
53223	Video tape and disc rental	109	-6.9	-10.3	-3.7	-11.3	-1.1
Professional and Technical Services							
541213	Tax preparation services	152	-3.3	1.2	4.7	0.7	-0.5
54131	Architectural services	234	4.6	1.2	-3.2	-1.1	-2.3
54133	Engineering services	969	9.4	9.6	0.1	4.6	-4.5
54181	Advertising agencies	195	4.6	3.0	-1.5	1.3	-1.7
541921	Photography studios, portrait	80	3.3	0.2	-3.1	-1.2	-1.4
Administrative and Waste Services							
561311	Employment placement agencies	260	16.7	4.8	-10.2	-1.4	-5.9
56151	Travel agencies	119	1.4	-1.2	-2.6	0.3	1.6
56172	Janitorial services	1225	2.5	2.9	0.3	4.7	1.8
Health Care and Social Assistance							
6215	Medical and diagnostic laboratories	227	11.8	8.9	-2.5	3.4	-5.0
621511	Medical laboratories	152	9.4	7.1	-2.1	5.1	-1.9
621512	Diagnostic imaging centers	75	15.5	11.4	-3.5	0.0	-10.2
Arts, Entertainment, and Recreation							
71311	Amusement and theme parks	138	0.7	-1.0	-1.7	8.1	9.2
71395	Bowling centers	76	1.6	-4.2	-5.7	-2.0	2.3
Accommodation and Food Services							
72	Accommodation and food services	11742	-0.9	-1.6	-0.7	2.3	4.0
721	Accommodation	1900	-0.8	-2.2	-1.4	1.1	3.4
7211	Traveler accommodation	1825	-1.0	-2.3	-1.3	1.0	3.4
722	Food services and drinking places	9842	-0.8	-1.4	-0.6	2.7	4.1
7221	Full-service restaurants	4617	-1.8	-3.2	-1.4	2.1	5.5
7222	Limited-service eating places	4178	0.3	0.5	0.2	3.3	2.7
7223	Special food services	686	-0.8	-0.9	0.0	3.8	4.7
7224	Drinking places (alcoholic beverages)	362	-2.0	-2.3	-0.4	1.2	3.6
Other Services							
8111	Automotive repair and maintenance	1115	-0.5	-5.1	-4.6	-4.5	0.7
81142	Reupholstery and furniture repair	25	-3.5	-6.2	-2.8	-2.7	3.7
81211	Hair, nail, and skin care services	917	2.3	0.2	-2.1	1.7	1.5
81221	Funeral homes and funeral services	108	-5.1	-0.8	4.5	2.2	3.1
8123	Drycleaning and laundry services	370	0.6	-0.7	-1.3	0.2	0.9
812310	Coin-operated laundries and drycleaners	49	-4.4	-2.5	2.0	-3.4	-0.9
812320	Drycleaning and laundry services	183	2.0	-2.3	-4.2	-2.1	0.2
81233	Linen and uniform supply	137	0.0	1.3	1.3	3.0	1.7
81292	Photofinishing	24	7.0	-2.2	-8.6	-8.5	-6.5

Table 2. Average annual percent change in output per hour, output, hours, compensation, and unit labor costs, 1987-2008

NAICS code	Industry	Average annual percent change, 1987-2008				
		Output per hour	Output	Hours	Labor compensation	Unit labor costs
Mining Industries						
21	Mining	-0.4	-0.2	0.2	5.4	5.7
211	Oil and gas extraction	0.5	-0.8	-1.3	5.7	6.5
2111	Oil and gas extraction	0.5	-0.8	-1.3	5.7	6.5
212	Mining, except oil and gas	2.0	0.8	-1.1	2.3	1.4
2121	Coal mining	2.4	0.1	-2.3	0.7	0.6
2122	Metal ore mining	1.9	2.2	0.4	5.0	2.7
2123	Nonmetallic mineral mining and quarrying	1.0	0.6	-0.4	3.4	2.8
213	Support activities for mining	3.1	5.6	2.4	9.0	3.2
2131	Support activities for mining	3.1	5.6	2.4	9.0	3.2
Utilities						
2211	Power generation and supply	2.4	1.1	-1.3	2.8	1.6
2212	Natural gas distribution	2.8	1.3	-1.5	3.3	2.0
Manufacturing						
311	Food	1.1	1.4	0.3	3.1	1.7
3111	Animal food	2.7	2.0	-0.7	3.4	1.3
3112	Grain and oilseed milling	2.1	1.3	-0.8	2.2	0.9
3113	Sugar and confectionery products	0.8	-0.1	-0.9	1.8	1.9
3114	Fruit and vegetable preserving and specialty	1.6	1.3	-0.3	2.9	1.5
3115	Dairy products	1.6	1.0	-0.6	3.2	2.2
3116	Animal slaughtering and processing	0.9	2.3	1.4	3.8	1.5
3117	Seafood product preparation and packaging	0.9	0.1	-0.8	3.0	2.8
3118	Bakeries and tortilla manufacturing	0.4	0.3	-0.2	2.4	2.1
3119	Other food products	0.5	2.0	1.6	4.2	2.1
312	Beverages and tobacco products	0.6	-0.3	-0.9	1.7	1.9
3121	Beverages	1.9	1.5	-0.4	2.3	0.8
3122	Tobacco and tobacco products	0.5	-3.1	-3.6	-0.6	2.6
313	Textile mills	3.5	-2.6	-5.9	-2.5	0.0
3131	Fiber, yarn, and thread mills	4.2	-1.5	-5.4	-2.0	-0.6
3132	Fabric mills	4.8	-2.6	-7.1	-2.7	-0.1
3133	Textile and fabric finishing mills	0.6	-3.6	-4.2	-2.6	1.0
314	Textile product mills	0.8	-1.1	-1.9	0.9	2.0
3141	Textile furnishings mills	0.7	-1.5	-2.2	0.2	1.7
3149	Other textile product mills	1.4	-0.2	-1.5	1.9	2.1
315	Apparel	-1.3	-8.1	-6.9	-5.3	3.1
3151	Apparel knitting mills	-0.6	-6.8	-6.2	-6.0	0.8
3152	Cut and sew apparel	-1.4	-8.5	-7.2	-5.2	3.6
3159	Accessories and other apparel	-2.6	-6.9	-4.4	-4.3	2.8
316	Leather and allied products	2.2	-4.5	-6.6	-2.8	1.8
3161	Leather and hide tanning and finishing	0.7	-4.8	-5.4	-2.5	2.4
3162	Footwear	2.5	-5.6	-7.9	-4.3	1.3
3169	Other leather products	1.5	-3.5	-4.9	-1.1	2.5
321	Wood products	1.3	0.1	-1.3	2.5	2.5
3211	Sawmills and wood preservation	2.5	0.1	-2.3	1.4	1.3
3212	Plywood and engineered wood products	0.7	-0.1	-0.8	2.2	2.3
3219	Other wood products	1.1	0.1	-1.0	3.2	3.0
322	Paper and paper products	2.0	0.2	-1.7	1.5	1.3
3221	Pulp, paper, and paperboard mills	3.0	-0.2	-3.1	0.5	0.6
3222	Converted paper products	1.5	0.5	-1.0	2.4	1.9
323	Printing and related support activities	1.5	0.1	-1.3	1.8	1.6
3231	Printing and related support activities	1.5	0.1	-1.3	1.8	1.6
324	Petroleum and coal products	2.6	1.2	-1.3	3.9	2.7
3241	Petroleum and coal products	2.6	1.2	-1.3	3.9	2.7
325	Chemicals	1.8	1.0	-0.7	3.4	2.3
3251	Basic chemicals	2.7	0.5	-2.1	2.1	1.6
3252	Resin, rubber, and artificial fibers	2.2	0.5	-1.6	2.0	1.5
3253	Agricultural chemicals	2.6	0.5	-2.1	1.9	1.4
3254	Pharmaceuticals and medicines	0.7	3.0	2.4	6.6	3.4
3255	Paints, coatings, and adhesives	1.0	-0.3	-1.4	2.6	2.9
3256	Soaps, cleaning compounds, and toiletries	3.0	2.3	-0.7	3.1	0.8
3259	Other chemical products and preparations	2.4	0.0	-2.3	1.5	1.4
326	Plastics and rubber products	2.0	1.7	-0.3	3.0	1.3
3261	Plastics products	1.9	2.0	0.1	3.5	1.4
3262	Rubber products	2.1	0.4	-1.7	1.4	1.0

Table 2. Average annual percent change in output per hour, output, hours, compensation, and unit labor costs, 1987-2008

NAICS code	Industry	Average annual percent change, 1987-2008				
		Output per hour	Output	Hours	Labor compensation	Unit labor costs
327	Nonmetallic mineral products	1.2	0.7	-0.5	2.5	1.8
3271	Clay products and refractories	1.3	-1.1	-2.4	0.2	1.4
3272	Glass and glass products	2.0	0.5	-1.5	1.2	0.7
3273	Cement and concrete products	0.4	1.1	0.6	3.6	2.5
3274	Lime and gypsum products	1.0	0.0	-1.0	3.1	3.1
3279	Other nonmetallic mineral products	1.7	1.5	-0.2	3.2	1.6
331	Primary metals	2.6	0.5	-2.1	1.2	0.7
3311	Iron and steel mills and ferroalloy production	5.2	2.5	-2.6	0.6	-1.8
3312	Steel products from purchased steel	-0.9	-1.6	-0.7	1.7	3.4
3313	Alumina and aluminum production	2.5	-0.1	-2.5	1.1	1.1
3314	Other nonferrous metal production	1.5	-0.9	-2.3	2.3	3.3
3315	Foundries	2.0	0.1	-1.9	1.2	1.2
332	Fabricated metal products	1.6	1.5	-0.2	3.1	1.6
3321	Forging and stamping	2.9	1.8	-1.0	2.6	0.8
3322	Cutlery and hand tools	1.4	-0.9	-2.3	1.5	2.5
3323	Architectural and structural metals	1.1	1.8	0.7	4.2	2.3
3324	Boilers, tanks, and shipping containers	0.8	0.3	-0.5	2.3	2.0
3325	Hardware	1.3	-2.6	-3.8	-0.9	1.7
3326	Spring and wire products	2.8	0.7	-2.0	1.9	1.1
3327	Machine shops and threaded products	2.5	3.3	0.8	4.6	1.3
3328	Coating, engraving, and heat treating metals	3.0	3.4	0.3	3.7	0.4
3329	Other fabricated metal products	1.7	0.9	-0.8	2.1	1.2
333	Machinery	2.5	1.9	-0.6	2.5	0.6
3331	Agriculture, construction, and mining machinery	3.0	3.6	0.6	3.6	-0.1
3332	Industrial machinery	2.5	1.6	-0.9	2.6	1.0
3333	Commercial and service industry machinery	1.6	-0.2	-1.7	0.6	0.8
3334	HVAC and commercial refrigeration equipment	2.1	1.7	-0.4	2.5	0.8
3335	Metalworking machinery	2.1	0.6	-1.5	1.7	1.1
3336	Turbine and power transmission equipment	2.0	1.8	-0.2	1.9	0.0
3339	Other general purpose machinery	2.6	1.9	-0.7	3.0	1.1
334	Computer and electronic products	12.2	9.8	-2.2	1.4	-7.7
3341	Computer and peripheral equipment	24.8	20.1	-3.8	-2.1	-18.5
3342	Communications equipment	7.4	4.5	-2.7	0.8	-3.5
3343	Audio and video equipment	3.9	0.3	-3.5	0.6	0.3
3344	Semiconductors and electronic components	16.8	15.2	-1.4	2.3	-11.2
3345	Electronic instruments	4.4	2.5	-1.8	2.2	-0.3
3346	Magnetic media manufacturing and reproduction	3.5	2.0	-1.5	1.2	-0.8
335	Electrical equipment and appliances	2.7	0.5	-2.1	1.6	1.1
3351	Electric lighting equipment	2.1	0.3	-1.8	1.8	1.4
3352	Household appliances	4.0	0.9	-3.0	-0.1	-1.0
3353	Electrical equipment	2.8	0.6	-2.1	1.6	1.0
3359	Other electrical equipment and components	2.0	0.2	-1.8	2.2	2.0
336	Transportation equipment	2.9	1.4	-1.4	1.3	-0.2
3361	Motor vehicles	3.4	1.2	-2.2	0.9	-0.3
3362	Motor vehicle bodies and trailers	1.3	1.2	0.0	3.9	2.7
3363	Motor vehicle parts	2.9	2.0	-0.8	1.2	-0.8
3364	Aerospace products and parts	1.7	-0.5	-2.1	0.7	1.2
3365	Railroad rolling stock	5.2	5.9	0.7	4.2	-1.6
3366	Ship and boat building	2.2	1.3	-0.9	2.8	1.5
3369	Other transportation equipment	6.8	7.2	0.4	5.0	-2.1
337	Furniture and related products	1.9	0.6	-1.2	2.4	1.7
3371	Household and institutional furniture	1.8	0.3	-1.5	2.2	1.9
3372	Office furniture and fixtures	1.8	0.9	-0.9	2.5	1.6
3379	Other furniture-related products	2.3	1.8	-0.5	2.8	1.0
339	Miscellaneous manufacturing	3.0	3.0	0.0	4.5	1.4
3391	Medical equipment and supplies	3.6	5.0	1.3	5.9	0.9
3399	Other miscellaneous manufacturing	2.2	1.3	-0.9	3.2	1.9
Transportation and Warehousing						
481	Air transportation	2.9	3.1	0.2	2.9	-0.2
482111	Line-haul railroads	4.2	2.2	-1.9	1.2	-1.0
4841	General freight trucking ^{2/}	1.3	2.5	1.1	3.9	1.4
48411	General freight trucking, local ^{2/}	3.1	4.0	0.8	4.3	0.4
48412	General freight trucking, long-distance	1.3	2.8	1.5	3.0	0.2
48421	Used household and office goods moving	-0.6	-0.2	0.4	2.5	2.7
491	Postal service	0.9	0.7	-0.2	4.1	3.3
4911	Postal service	0.9	0.7	-0.2	4.1	3.3

Table 2. Average annual percent change in output per hour, output, hours, compensation, and unit labor costs, 1987-2008

NAICS code	Industry	Average annual percent change, 1987-2008				
		Output per hour	Output	Hours	Labor compensation	Unit labor costs
492	Couriers and messengers	-0.2	2.2	2.4	4.8	2.5
493	Warehousing and storage ^{1/}	2.7	6.1	3.4	6.1	-0.1
4931	Warehousing and storage ^{1/}	2.7	6.1	3.4	6.1	-0.1
49311	General warehousing and storage ^{1/}	5.0	8.5	3.3	6.7	-1.6
49312	Refrigerated warehousing and storage ^{1/}	-0.3	3.0	3.2	4.8	1.8
Information						
511	Publishing	3.8	4.1	0.3	5.7	1.5
5111	Newspaper, book, and directory publishers	0.0	-1.0	-1.0	3.3	4.4
5112	Software publishers	14.4	21.9	6.5	12.3	-7.9
51213	Motion picture and video exhibition	1.2	1.9	0.7	3.7	1.7
515	Broadcasting, except internet	1.6	2.7	1.1	5.0	2.2
5151	Radio and television broadcasting	0.4	0.6	0.1	4.0	3.4
5152	Cable and other subscription programming	3.6	8.3	4.5	10.4	2.0
5171	Wired telecommunications carriers	4.4	3.8	-0.5	2.9	-0.9
5172	Wireless telecommunications carriers	9.5	22.4	11.9	15.6	-5.6
Finance and Insurance						
52211	Commercial banking	3.5	3.5	0.0	5.5	1.9
Real Estate and Rental and Leasing						
532111	Passenger car rental	1.8	2.9	1.1	5.7	2.8
53212	Truck, trailer, and RV rental and leasing	3.7	2.9	-0.8	3.6	0.6
53223	Video tape and disc rental	4.2	4.4	0.2	3.0	-1.3
Professional and Technical Services						
541213	Tax preparation services	0.7	3.3	2.6	4.7	1.3
54131	Architectural services	1.5	3.9	2.3	6.0	2.1
54133	Engineering services	1.8	4.0	2.2	6.9	2.7
54181	Advertising agencies	2.0	2.4	0.4	4.9	2.5
541921	Photography studios, portrait	0.1	2.3	2.2	4.7	2.3
Administrative and Waste Services						
561311	Employment placement agencies ^{2/}	7.6	8.9	1.2	7.3	-1.5
56151	Travel agencies	6.2	5.1	-1.0	4.1	-1.0
56172	Janitorial services	2.2	4.2	2.0	6.0	1.7
Health Care and Social Assistance						
6215	Medical and diagnostic laboratories ^{2/}	4.3	7.4	3.0	6.1	-1.2
621511	Medical laboratories ^{2/}	3.6	6.1	2.4	5.4	-0.7
621512	Diagnostic imaging centers ^{2/}	5.0	9.4	4.2	7.8	-1.5
Arts, Entertainment, and Recreation						
71311	Amusement and theme parks	0.1	3.0	2.9	6.6	3.5
71395	Bowling centers	0.4	-1.5	-1.9	1.3	2.8
Accommodation and Food Services						
72	Accommodation and food services	0.9	2.4	1.5	5.5	3.0
721	Accommodation	1.7	2.9	1.2	5.3	2.4
7211	Traveler accommodation	1.7	2.9	1.2	5.3	2.3
722	Food services and drinking places	0.6	2.3	1.6	5.5	3.2
7221	Full-service restaurants	0.6	2.3	1.7	6.4	4.0
7222	Limited-service eating places	0.6	2.5	1.8	5.3	2.8
7223	Special food services	1.7	2.9	1.1	4.1	1.2
7224	Drinking places (alcoholic beverages)	-0.4	-0.6	-0.1	2.4	2.9
Other Services						
8111	Automotive repair and maintenance	1.0	1.6	0.6	4.0	2.4
81142	Reupholstery and furniture repair	-0.2	-2.0	-1.8	1.1	3.2
81211	Hair, nail, and skin care services	2.3	3.1	0.8	5.3	2.1
81221	Funeral homes and funeral services	-0.5	-0.2	0.4	4.3	4.5
8123	Drycleaning and laundry services	0.9	0.6	-0.3	3.1	2.5
812310	Coin-operated laundries and drycleaners	1.9	0.7	-1.2	3.1	2.5
812320	Drycleaning and laundry services	0.6	-0.6	-1.2	1.8	2.4
81233	Linen and uniform supply	0.3	1.7	1.3	4.6	2.8
81292	Photofinishing	0.7	-4.8	-5.4	-2.3	2.6

^{1/} For NAICS industries 493, 4931, 49311, and 49312, average annual percent changes are for 1992-2008.

^{2/} For NAICS industries 4841, 48411, 561311, 6215, 621511, and 621512, average annual percent changes are for 1994-2008.