



National Institute on Alcohol Abuse and Alcoholism
Division of Epidemiology and Prevention Research
Alcohol Epidemiologic Data System

SURVEILLANCE REPORT #93

LIVER CIRRHOSIS MORTALITY IN THE UNITED STATES, 1970–2009

Young-Hee Yoon, Ph.D.
Hsiao-ye Yi, Ph.D.

CSR, Incorporated¹
Suite 1000
2107 Wilson Boulevard
Arlington, VA 22201

August 2012

U.S. Department of Health and Human Services
Public Health Service
National Institutes of Health

¹ CSR, Incorporated operates the Alcohol Epidemiologic Data System (AEDS) under Contract No. HHSN267200800023 for the Division of Epidemiology and Prevention Research, National Institute on Alcohol Abuse and Alcoholism (NIAAA). Dr. Rosalind A. Breslow serves as NIAAA Project Officer on the contract.

(Blank page)

HIGHLIGHTS

This surveillance report, prepared biennially by the Alcohol Epidemiologic Data System (AEDS), National Institute on Alcohol Abuse and Alcoholism (NIAAA), presents trends in liver cirrhosis mortality in the United States. Data on the underlying cause of death were compiled from public use data tapes published annually by the National Center for Health Statistics (NCHS). Population data provided by the U.S. Census Bureau are used as denominators to calculate mortality rates. In this issue, the 2000s population data used previously in this report were replaced with the reestimated intercensal population data that bridge the 2000 and 2010 censuses. This resulted in minor changes in the calculated liver cirrhosis mortality rates for some subpopulation groups for the 2000s compared with prior issues of this report (see page 3 for details).

Overall cirrhosis mortality in the United States increased steadily following the end of Prohibition in 1933 until 1973, when the age-adjusted death rate peaked at 18.1 deaths per 100,000 population. Cirrhosis mortality then began an almost steady decline that has continued throughout the last four decades. The following are highlights of liver cirrhosis mortality trends from the early 1970s through 2009, the most recent year for which data are available.

Cirrhosis Mortality in 2009

- In 2009 liver cirrhosis was the 12th leading cause of death in the United States, with a total of 31,522 deaths— 664 more than in 2008. The crude death rate from all cirrhosis and alcohol-related cirrhosis increased by 2.0 percent from 2008 to 2009.
- Among all cirrhosis deaths in 2009, 48.2 percent were alcohol-related. The proportion of alcohol-related cirrhosis was highest (70.6 percent) among decedents aged 35 to 44.
- The age-adjusted death rate from all cirrhosis for Hispanic White males was 1.7 times the rate for non-Hispanic White males and 2.1 times the rate for non-Hispanic Black males. The rate for Hispanic White females was 1.5 times the rate for non-Hispanic White females and 2.2 times the rate for non-Hispanic Black females.
- Wide variations existed across Hispanic subgroups; the 5-year annual average of age-adjusted death rates from all cirrhosis was highest for Mexicans and Puerto Ricans and lowest for Cubans, among both males and females.

Cirrhosis Mortality Trends

- While the age-adjusted all-cause mortality rate declined by 39.4 percent from 1970 to 2009, the age-adjusted death rate from all liver cirrhosis declined for the same period by 47.2 percent, from 17.8 to 9.4 deaths per 100,000 population. Rates for White males, Black males, White females, and Black females declined by 42.7, 73.6, 37.4, and 77.5 percent, respectively.
- The age-adjusted death rate from all liver cirrhosis for males was consistently twice or more the rate for females, regardless of race.
- The age-adjusted death rate from alcohol-related liver cirrhosis declined by 28.6 percent, from 6.3 deaths per 100,000 population in 1970 to 4.5 deaths per 100,000 population in 2009. Rates for White males, Black males, White females, and Black females declined by 15.3, 73.5, 16.1, and 77.2 percent, respectively.

Healthy People 2010 Objectives

- One of the *Healthy People 2010* objectives is to reduce liver cirrhosis mortality to no more than 3.2 deaths per 100,000 population. Although the 2010 mortality data are not available yet, it is safe to say that liver cirrhosis mortality will not experience a large enough decline from its 2009 age-adjusted rate of 9.4 to meet that goal by 2010.

INTRODUCTION

This surveillance report on liver cirrhosis is one of a series of four reports published annually or biennially to monitor trends in alcohol consumption and alcohol-related morbidity and mortality in the United States. These surveillance reports are prepared by the Alcohol Epidemiologic Data System (AEDS), Division of Epidemiology and Prevention Research, National Institute on Alcohol Abuse and Alcoholism (NIAAA), and are intended to be useful to researchers, policymakers, and other professionals interested in alcohol abuse and its long-term effects. The data also are essential in assessing progress toward meeting the Nation's health promotion and disease prevention objective of reducing liver cirrhosis mortality, as stated in *Healthy People 2010* (Department of Health and Human Services [HHS] 2000).

Cirrhosis of the liver is an outcome with a variety of causes, including alcohol consumption, exposure to various drugs and toxic chemicals, viral hepatitis, and other viral and infectious diseases (Dufour et al. 1993). It has been well established that alcohol consumption is a major contributor to deaths from cirrhosis and the related condition of alcoholic hepatitis (Mann et al. 2003).

The level and duration of alcohol consumption are important determinants in the development of liver pathology. As the primary site for detoxification of alcohol by oxidation of its metabolites, the liver can undergo three pathologies: fatty liver, alcoholic hepatitis, and cirrhosis. The prognosis for patients with cirrhosis is highly unpredictable. Although some patients can benefit from a liver transplant, at present, no method exists for repairing liver damage associated with cirrhosis. However, the consequences of this disease can be treated, and life can be prolonged, if patients with cirrhosis resulting from alcohol consumption abstain from further alcohol use. Thus, early detection and prevention of further damage are important in prolonging life.

The coding scheme used in the United States to classify cause of death is the International Classification of Diseases (ICD), a statistical classification of disease and injury widely used by countries supporting mortality reporting systems. ICD codes classify the cause of death from cirrhosis as either related to alcohol or not related to alcohol. Because of the stigma associated with excessive alcohol use, physicians and other officials who certify causes of death may not identify alcohol in the case of a death from cirrhosis in an effort to protect family members. From 1970 to 2009, the proportion of all cirrhosis deaths coded as alcohol-related ranged from 36 to 48 percent (depending on year), even though some researchers believe alcohol might have contributed to a substantially higher proportion of all deaths from cirrhosis (Haberman and Weinbaum 1990; Powell and Klatskin 1968). For this reason, this surveillance report examines all cirrhosis deaths, as well as those that are explicitly coded as alcohol-related.

DATA AND MEASURES

Data Sources

Death counts and rates in this report are based on a single underlying cause for each death, defined as “the disease or injury which initiated the train of morbid events leading directly or indirectly to death or circumstances of the accident or violence which produced the fatal injury” (NCHS 1982). This approach is consistent with other mortality statistics reported by NCHS.

Cirrhosis death records for 1970–2009 were extracted from public use mortality data files produced by NCHS. With the exception of data files for 1972, these files contain individual records for each death occurring in the United States, and in 1972 the files contained a 50-percent sample of all U.S. deaths. The deaths counted in this report are for U.S. residents only. Deaths of foreign residents in the United States are not counted.

Prior to the 2010 issue of this report, historical cirrhosis mortality rates (presented in Figure 1 and Table 1) for years 1910–1969 were calculated based on age-specific death rates from an NIAAA data reference manual on cirrhosis mortality (NIAAA 1985). However, the age-specific death rates for ages younger than 25 were indirectly derived due to the lack of data for the young age segment in that publication. In the 2010 issue, the historical data were recalculated based on original historical government documents that NCHS recently made available on the Internet. For years 1920–1969, the data sources included the annual reports of the Mortality Statistics (Bureau of the Census 1922–1938) and Vital Statistics in the United States (Bureau of the Census 1939–1946; National Office of Vital Statistics 1947–1951, 1953–1960; National Center for Health Statistics, 1961–1974). For years 1910–1919, the data sources included the National Office of Vital Statistics special report (1956) and intercensal resident population estimates in death registration States developed by the Bureau of the Census and presented in Linder and Grove (1943). The recalculation did not result in any substantial changes in the historical trends. However, it filled in a few missing dots in the trend lines for the early years, and made slight modifications in the historical cirrhosis death rates. Note that all historical mortality statistics were based on numbers obtained through State death registration offices. Before 1933 not all States collected death registration information. The changing number of death registration States impedes the process of obtaining comparable mortality data for the United States prior to 1933.

Population data from various estimates provided by the U.S. Census Bureau were used as denominators for calculating mortality rates in this report. For years 2000 through 2009, population data came from the newly released bridged race intercensal estimates developed for NCHS by the U.S. Census Bureau (NCHS 2011). These reestimates bridge the 2000 and 2010 censuses. Following its past practice,

AEDS used the reestimates to replace population data for years 2000 through 2007 used in the previous issues of this report. This resulted in almost no changes in the overall age-adjusted mortality rates for those years as slight, but opposite changes occurred in the rates for some demographic subgroups. For instance, compared with numbers published in the previous issues, the revised age-specific cirrhosis death rates are slightly lower for the 55–84 age groups, but slightly higher for the 85 or older age group. Similarly, the revised age-adjusted mortality rates are slightly higher than the previous numbers for Whites but slight lower for Blacks. However, rates for some small population subgroups, such as Black Hispanics, were largely affected by the use of the population reestimates. In any case, rates calculated for Black Hispanics should be considered unreliable because of the small size of this population subgroup.

Population data for years 1990 through 1999 came from bridged-race intercensal resident population estimates developed for NCHS by the U.S. Census Bureau (NCHS 2003). Population data for 1970–1989 came from estimates developed for the National Cancer Institute (NCI) by the U.S. Census Bureau (NCI 2002). Population data for 1910–1969 came from intercensal resident population estimates developed by the U.S. Census Bureau (Lindner and Grove 1943; Grove and Hetzel 1968; Bureau of the Census 1965, 1968, 1969, 1970).

Hispanic subgroup population data were taken from estimates based on the Current Population Survey (CPS) prepared by the U.S. Census Bureau for NCHS (Arias et al. 2003; Hoyert et al. 2006; Kochanek et al. 2004; Miniño et al. 2002; Miniño et al. 2007; Xu et al. 2010; Kochanek et al. 2011). The CPS population estimates were adjusted to resident Hispanic population control totals (i.e., the year 2000-based population estimates for the respective subpopulations in the United States for July 1 of each year).

Definitions and Subclassifications of Liver Cirrhosis

During the period for which mortality statistics are shown in this report, cause of death was classified according to nine different revisions of the ICD. The ICD has been revised periodically to reflect progress in medical knowledge, with later revisions generally providing greater specificity of coding.

The eighth (NCHS 1968), ninth (World Health Organization [WHO] 1978), and tenth (WHO 1992) revisions of the ICD (ICD-8, ICD-9, and ICD-10, implemented in 1968, 1979, and 1999, respectively) provide for coding categories of cirrhosis with and without mention of alcohol. ICD-9 uses different categories for cirrhosis than did ICDA-8. ICD-10 uses twice as many categories for cirrhosis as did ICD-9. To examine trends for comparable diseases from 1970–2009, ICD-9 and ICD-10 categories must be matched and recoded to those consistent with ICDA-8 categories. The relevant crosswalk of the three ICD revisions, developed by AEDS staff in collaboration with NIAAA's former Division of Biometry and Epidemiology (DBE), is shown in the table on the next page. As can be seen under ICD-10, AEDS includes portal hypertension (ICD code K76.6) and change of fatty liver not elsewhere classified (n.e.c.) (ICD code K76.0) among cirrhosis categories. Because NCHS counts only ICD codes K70, K73, and K74 as liver cirrhosis, AEDS numbers are slightly larger than those reported by NCHS.

With the introduction of ICD-10 for 1999 data came changes in rules for selecting the underlying cause of death and new categories. These new rules and categories may contribute to observed changes in the number of deaths from liver cirrhosis. Anderson et al. (2001) conducted a comparability study which estimated that the use of ICD-10 would classify an additional 3.67 percent of deaths as due to cirrhosis when compared with ICD-9. Readers should keep this in mind when examining trends involving data from 1999 and later years. In addition, NCHS

implemented coding changes in data for 2007, which resulted in more deaths being assigned to alcoholic liver disease (ICD-10 code K70). Therefore, the unusually big increase in cirrhosis deaths observed from 2006 to 2007 may be largely due to the coding changes (Xu et al. 2010).

Race or Ethnicity of Decedent

Data are presented in this report by White and Black race categories, with other races such as American Indian/Alaska Native and Asian/Pacific Islander included in the "all races" category but not shown separately. Beginning in 2003, multiple race reporting was implemented in 7 States (California, Idaho, Montana, New York, Hawaii, Maine, and Wisconsin), while the remaining 43 States and the District of Columbia allowed only a single race to be reported. To make the data uniform and comparable, NCHS "bridged" reported multiple race to single race. In this effort, multiracial decedents were imputed with a single race according to the combination of races, Hispanic origin, sex, and age indicated on their death certificates. The imputation procedure is described in detail at: http://www.cdc.gov/nchs/data/dvs/Multiple_race_docu_5-10-04.pdf.

Vital statistics data also provide information on the ethnicity of decedents (i.e., Mexican, Puerto Rican, Cuban, Central or South American, other or unknown Hispanic, or non-Hispanic). In this report, trend data by Hispanic origin were presented for the years 1991 and later because, prior to 1991, substantial proportions of decedents were missing ethnic identification, and Hispanic origin measures were not usable. From 1991 through 2009, the percentage of cirrhosis deaths with Hispanic origin unknown was less than 2 percent for both Black and White decedents. In 2009, only 0.3 percent of cirrhosis decedents had an "unknown" classification for Hispanic origin. The tables and figures showing data based on Hispanic

origin excluded decedents for whom Hispanic origin could not be determined. Readers are cautioned that rates calculated for Black Hispanics are unreliable because of the small number of cirrhosis deaths in this population subgroup.

After a continuous, rapid population growth over the past few decades, Hispanics became the largest minority group in the United States in 2003. While Hispanics often are considered one

ethnic group, they are well-known for heterogeneity by country of origin in terms of socioeconomic status and drinking patterns, which may well affect cirrhosis mortality. To provide information on Hispanic subgroup differences, beginning with the 2007 issue, this report presents additional data on cirrhosis death rates for four major Hispanic subgroups, namely Mexicans, Puerto Ricans, Cubans, and Other Hispanics.

Crosswalk of ICD-10 codes to ICD-9 codes and ICDA-8 codes

ICD-10	ICD-9	ICDA-8
K70.0 Alcoholic fatty liver	571.0 Alcoholic fatty liver	571.0 Alcohol-related liver cirrhosis
K70.1 Alcoholic hepatitis	571.1 Acute alcoholic hepatitis	
K70.2 Alcoholic fibrosis and sclerosis of liver	571.2 Alcoholic cirrhosis of liver	
K70.3 Alcoholic cirrhosis of liver		
K70.9 Alcoholic liver disease, unspecified	571.3 Alcoholic liver damage, unspecified	
K70.4 Alcoholic hepatic failure ¹	303 Alcohol dependence syndrome plus 572.8 Chronic hepatic failure	
K73.0 Chronic persistent hepatitis, not elsewhere classified (n.e.c.) K73.1 Chronic lobular hepatitis, n.e.c. K73.2 Chronic active hepatitis, n.e.c. K73.8 Other chronic hepatitis, n.e.c. K73.9 Chronic hepatitis, unspecified	571.4 Chronic hepatitis	571.8 Specified liver cirrhosis without mention of alcohol
K74.3 Primary biliary cirrhosis K74.4 Secondary biliary cirrhosis K74.5 Biliary cirrhosis, unspecified	571.6 Biliary cirrhosis	571.9 Unspecified liver cirrhosis without mention of alcohol
K76.0 Fatty (change of) liver, n.e.c. ²	571.8 Other chronic nonalcoholic liver disease	
K76.6 Portal hypertension ²	572.3 Portal hypertension	
K74.0 Hepatic fibrosis K74.2 Hepatic fibrosis with hepatic sclerosis K74.6 Other and unspecified cirrhosis of liver	571.5 Cirrhosis of the liver without mention of alcohol	571.9 Unspecified liver cirrhosis without mention of alcohol
K74.1 Hepatic sclerosis	571.9 Unspecified liver cirrhosis without mention of alcohol	

¹ A new title in ICD-10 that requires the coexistence of two ICD-9 codes.

² Not defined as liver cirrhosis by NCHS.

METHODS

Statements of disease frequency, expressed as the number of deaths due to liver cirrhosis, have little epidemiologic usefulness because such information permits neither comparisons of mortality among various population subgroups nor the description of trends over time. For epidemiologic purposes, death rates are used to compare the frequency of death from a disease or condition. The following measures of disease frequency are used in this report to assess trends in liver cirrhosis mortality:

- *Unadjusted (or crude) death rates*—These are summary measures calculated by dividing the total number of deaths due to cirrhosis (or subcategories) in the population in a certain year by the total number of individuals in that population in that year (i.e., population at risk). Problems can arise when comparing crude rates between various years to assess any change in mortality over time because the populations at risk may differ with respect to an underlying characteristic such as age, race, or sex. For example, an older population tends to have a higher rate of death for a target disease than a younger population because death from disease is more common in an aging population. In this case, rates in different populations should be assessed by comparing age-specific rates or age-adjusted rates.
- *Age-specific death rates*—These rates for any year refer to the number of deaths due to liver cirrhosis (or subcategories) in a defined age interval, divided by the total number of persons in that age interval. For a given age interval, examining age-specific rates for various years allows comparison of mortality rates among subgroups of the population that do not differ in their age distribution. Age-specific rates also provide a basis for detailed study of the variation of mortality rates among different age intervals in any single year.

- *Age-adjusted death rates*—These are statistically constructed summary rates that account for differences in mortality regardless of any difference in the age distribution between populations. Age adjustment assumes that populations have the same age distribution and applies a standard age distribution to calculate age-adjusted rates for various populations. Therefore, when comparing age-adjusted rates of two populations, any differences between the rates can no longer be due to the difference in the age distribution between the two populations. Age adjustment is crucial for standardizing rates over many years because the U.S. population has grown progressively older in recent decades. Without age adjustment, any apparent increases in unadjusted mortality rates for cirrhosis (or any other disease) could be caused by the fact that older people are more likely to die from disease.

According to the requirement of the U.S. Department of Health and Human Services (1998), this report applies the year 2000 standard population in calculations of all age-adjusted death rates (replacing the 1940 standard population used in issues published before 2002).

¹ Standard population age distribution:

Age group	Number	
	1940	2000
0 to 4 years	80,061	18,986,520
5 to 14 years	170,355	39,976,619
15 to 24 years	181,677	38,076,743
25 to 34 years	162,066	37,233,437
35 to 44 years	139,237	44,659,185
45 to 54 years	117,811	37,030,152
55 to 64 years	80,294	23,961,506
65 to 74 years	48,426	18,135,514
75 to 84 years	17,303	12,314,793
85+ years	2,770	4,259,173
All ages	1,000,000	274,633,642

Source: Murphy (2000) for 1940 age standard; Miniño et al. (2007) for 2000 age standard.

Age-adjusted death rates presented in this report were computed by using 10-year age intervals of the enumerated population of the United States in 2000 as the standard population. Results from the age adjustment allow for meaningful comparison of similar rates over long periods of time or from different subpopulations. The basic procedure involves finding the expected number of deaths that would have existed if the age-specific rates for a particular year prevailed in a population whose age distribution was like that of the United States in 2000. This was accomplished by multiplying the specific rates for each age group by the population for the corresponding age group in the standard population. The age-adjusted mortality rate was then calculated by adding the expected deaths for each age group and dividing this sum by the total population taken as the standard.

Rates for Hispanic subgroups are based on 5-year annual moving averages in order to increase the reliability of these estimates. Because the population data for these groups were drawn from the Current Population Survey, readers are cautioned that the rates are subject to sampling variability in the denominator as well as random fluctuations in the numerator.

REFERENCES

- Anderson, R.N.; Minino, A.M.; Hoyert, D.L.; and Rosenberg, H.M. Comparability of cause of death between ICD-9 and ICD-10: Preliminary estimates. *National Vital Statistics Reports*, Vol. 49, No. 2. Hyattsville, MD: NCHS, 2001.
- Arias, E.; Anderson, R.N.; Kung, H.-C.; Murphy, S.L.; and Kochanek, K.D. Deaths: Final Data for 2001. *National Vital Statistics Reports*, Vol. 52, No. 3. Hyattsville, MD: NCHS, 2003.
- Bureau of the Census. *Mortality Statistics (Data for Years 1920–1936)*. Washington, DC: Department of Commerce, 1922–1938. (<http://www.cdc.gov/nchs/products/vsus.htm>)
- Bureau of the Census. *Vital Statistics of the United States (Data for Years 1937–1944)*. Washington, DC: Department of Commerce, 1939–1946. (<http://www.cdc.gov/nchs/products/vsus.htm>)
- Bureau of the Census. Estimates of the Population of the United States, by Age, Color, and Sex: July 1, 1960 to 1965. *Current Population Reports Series P-25, No. 321*. Washington, DC: Department of Commerce, 1965.
- Bureau of the Census. Estimates of the Population of the United States, by Age, Color, and Sex: July 1, 1964 to 1967. *Current Population Reports Series P-25, No. 385*. Washington, DC: Department of Commerce, 1968.
- Bureau of the Census. Estimates of the Population of the United States, by Age, Color, and Sex: July 1, 1968. *Current Population Reports Series P-25, No. 416*. Washington, DC: Department of Commerce, 1969.
- Bureau of the Census. Estimates of the Population of the United States, by Age, Color, and Sex: July 1, 1969. *Current Population Reports Series P-25, No. 441*. Washington, DC: Department of Commerce, 1970.
- Department of Health and Human Services. *HHS Policy for Changing the Population Standard for Age Adjusting Death Rates*. Memorandum from the Secretary (<http://aspe.hhs.gov/datacncl/ageadj.htm>). Washington, DC: DHHS, August 26, 1998.
- Department of Health and Human Services. *Healthy People 2010. 2nd ed. With Understanding and Improving Health and Objectives for Improving Health*. Vol. II. Washington, DC: DHHS, November, 2000.
- Dufour, M.C.; Stinson, F.S.; and Caces, M.F. Trends in cirrhosis morbidity and mortality: United States, 1979–1988. *Seminars in Liver Disease* 13(2):109–125, 1993.
- Grove, R.D.; and Hetzel, A.M. *Vital Statistics Rates in the United States, 1940–1960*. Public Health Service Publication No. 1677. Washington, DC.: Department of Health, Education, and Welfare, Public Health Service, National Center for Health Statistics, 1968.
- Haberman, P.W.; and Weinbaum, D.F. Liver cirrhosis with and without mention of alcohol as cause of death. *British Journal of Addiction* 85(2):217–222, 1990.
- Hoyert D.L.; Heron, M.P.; Murphy, S.L.; and Kung, H.-C. Deaths: Final Data for 2003. *National Vital Statistics Reports*, Vol. 54, No. 13. Hyattsville, MD: NCHS, 2006.
- Kochanek, K.D.; Murphy, S.L.; Anderson, R.N.; and Scott, C. Deaths: Final Data for 2002. *National Vital Statistics Reports*, Vol. 53, No. 5. Hyattsville, MD: NCHS, 2004.
- Kochanek, K.D.; Xu, J.; Murphy, S.L.; Miniño, A.M.; and Kung, H.C. Deaths: Final Data for 2009. *National Vital Statistics Reports*, Vol. 60, No. 3. Hyattsville, MD: NCHS, 2011.

- Linder, F.E.; and Grove, R.D. *Vital Statistics Rates in the United States: 1900–1940*. Washington, DC: Department of Commerce, Bureau of the Census, 1943.
- Mann, R.E.; Smart, R.G.; and Govoni, R. The epidemiology of alcoholic liver disease. *Alcohol Research & Health* 27(3):209–219, 2003.
- Miniño, A.M.; Arias, E.; Kochanek, K.D.; Murphy, S.L.; and Smith, B.L. Deaths: Final Data for 2000. *National Vital Statistics Reports*, Vol. 50, No. 15. Hyattsville, MD: NCHS, 2002.
- Miniño, A.M.; Heron, M.P.; Murphy, S.L.; and Kochanek, K.D. Deaths: Final Data for 2004. *National Vital Statistics Reports*, Vol. 55, No. 19. Hyattsville, MD: NCHS, 2007.
- Murphy, S.L. Deaths: Final Data for 1998. *National Vital Statistics Reports*, Vol. 48, No. 11. Hyattsville, MD: NCHS, 2000.
- National Cancer Institute. *U.S. Population Data* (<http://seer.cancer.gov/popdata/download.html>), 2002.
- National Center for Health Statistics. *Vital Statistics of the United States (Data for Years 1959–1969)*. Washington, DC: U.S. Department of Health, Education, and Welfare, Public Health Service, 1961–1974. (<http://www.cdc.gov/nchs/products/vsus.htm>)
- National Center for Health Statistics. *Eighth Revision, International Classification of Diseases Adapted for Use in the United States*. DHEW Pub. No. PHS 1693. Washington, DC: DHEW, 1968.
- National Center for Health Statistics. *Instructions for Classifying the Underlying Cause of Death*, 1983. Hyattsville, MD: NCHS, September 1982.
- National Center for Health Statistics. *Bridged-race Intercensal estimates of the July 1, 1990–July 1, 1999, United States resident population by State, county, age group, sex, race, and Hispanic origin*, prepared by the U.S. Census Bureau with support from National Cancer Institute (http://www.cdc.gov/nchs/nvss/bridged_race/data_documentation.htm), April 15, 2003.
- National Center for Health Statistics. *Intercensal estimates of the resident population of the United States for July 1, 2000–July 1, 2009, by year, single-year of age, bridged race, Hispanic origin, and sex*. Prepared under a collaborative arrangement with the U.S. Census Bureau (http://www.cdc.gov/nchs/nvss/bridged_race.htm), November 3, 2011.
- National Institute on Alcohol Abuse and Alcoholism (Alcohol Epidemiologic Data System). *Liver Cirrhosis Mortality in the United States [U.S. Alcohol Epidemiologic Data Reference Manual, Volume 2]*. Rockville, MD: DHHS, PHS, September 1985.
- National Office of Vital Statistics. *Vital Statistics of the United States (Data for Years 1945–1949)*. Washington, DC: Federal Security Agency, United States Public Health Service, 1947–1951. (<http://www.cdc.gov/nchs/products/vsus.htm>)
- National Office of Vital Statistics. *Vital Statistics of the United States (Data for Years 1950–1958)*. Washington, DC: U.S. Department of Health, Education, and Welfare, Public Health Service, 1953–1960. (<http://www.cdc.gov/nchs/products/vsus.htm>)
- National Office of Vital Statistics. *Death Rates by Age, Race, and Sex United States, 1900–1953: Cirrhosis of Liver. Vital Statistics-Special Reports. Vol. 43, No. 24*. Washington, DC: U.S. Department of Health, Education, and Welfare, Public Health Service, 1956.
- Powell, W.J., and Klatskin, G. Duration of survival in patients with Laennec’s cirrhosis: Influence of alcohol withdrawal, and possible effects of recent changes in general management of the disease. *American Journal of Medicine* 44:406, 1968.
- World Health Organization. *International Classification of Diseases, 9th Revision*. Geneva, Switzerland: WHO, 1978.
- World Health Organization. *International Classification of Diseases and Related Health Problems, Tenth Revision*. Geneva, Switzerland: WHO, 1992.
- Xu, J.Q.; Kochanek, K.D.; Murphy, S.L.; and Tejada-Vera, B. Deaths: Final data for 2007. *National Vital Statistics Reports*, Vol. 58, No. 19. Hyattsville, MD: NCHS, 2010.

List of Figures

		Page
Figure 1	Age-adjusted death rates of liver cirrhosis by sex (death registration, States, 1910–1932, and United States, 1933–2009)	11
Figure 2	Age-adjusted death rates of liver cirrhosis by sex and race, United States, 1970–2009.....	12
Figure 3	Age-specific death rates of liver cirrhosis, United States, 1970–2009.....	13
Figure 4	Age-specific death rates of liver cirrhosis by race and sex, United States, 1970–2009	14
Figure 5	Age-adjusted death rates of liver cirrhosis by sex, race, and Hispanic origin, United States, 1970–2009	16
Figure 6	Age-adjusted death rates of liver cirrhosis reported with and without mention of alcohol, United States, 1970–2009.....	17
Figure 7	Percent of all cirrhosis deaths coded as alcohol-related by age, United States, 1970–2009.....	18
Figure 8	Age-adjusted death rates of alcohol-related liver cirrhosis by sex, race, and Hispanic origin, United States, 1970–2009	19
Figure 9	Age-adjusted death rates of specified liver cirrhosis without mention of alcohol by sex, race, and Hispanic origin, United States, 1970–2009.....	20
Figure 10	Age-adjusted death rates of unspecified liver cirrhosis without mention of alcohol by sex, race, and Hispanic origin, United States, 1970–2009.....	21
Figure 11	Five-year annual average of age-adjusted death rates of liver cirrhosis with and without mention of alcohol by Hispanic subgroup and sex, United States, 2005–2009	22

List of Tables

		Page
Table 1	Age-adjusted death rates from liver cirrhosis by sex (death registration States, 1910–1932, and United States, 1933–2009)	23
Table 2	Age-specific number of deaths, age-specific death rates, and age-adjusted death rates from all liver cirrhosis by race, Hispanic origin, and sex, United States, 1970–2009	24
Table 3	Age-specific number of deaths, age-specific death rates, and age-adjusted death rates from liver cirrhosis with and without mention of alcohol, United States, 1970–2009	38
Table 4	Age-adjusted death rates from liver cirrhosis with and without mention of alcohol by sex, race, and Hispanic origin, United States, 1970–2009	42
Table 5	Age-specific number of deaths, 5-year annual moving average of age-specific death rates, and age-adjusted death rates from all liver cirrhosis by Hispanic subgroup and sex, United States, 2000–2009	46
Table 6	Age-specific number of deaths, 5-year annual moving average of age-specific death rates, and age-adjusted death rates from liver cirrhosis with and without mention of alcohol by Hispanic subgroup and sex, United States, 2000–2009	49

Figure 1. Age-adjusted death rates of liver cirrhosis by sex (death registration States, 1910–32, and United States, 1933–2009).

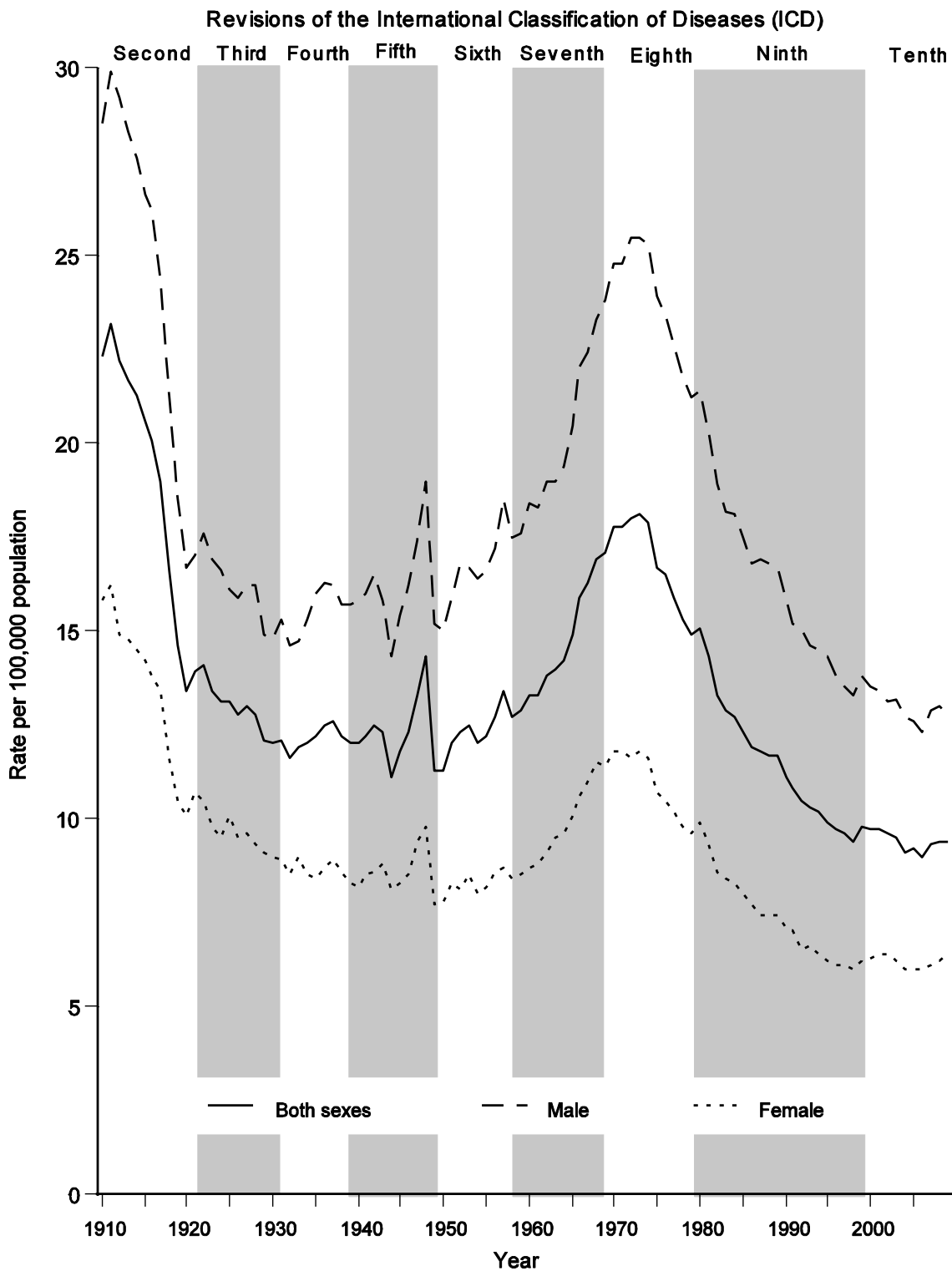


Figure 2. Age-adjusted death rates of liver cirrhosis by sex and race, United States, 1970–2009.

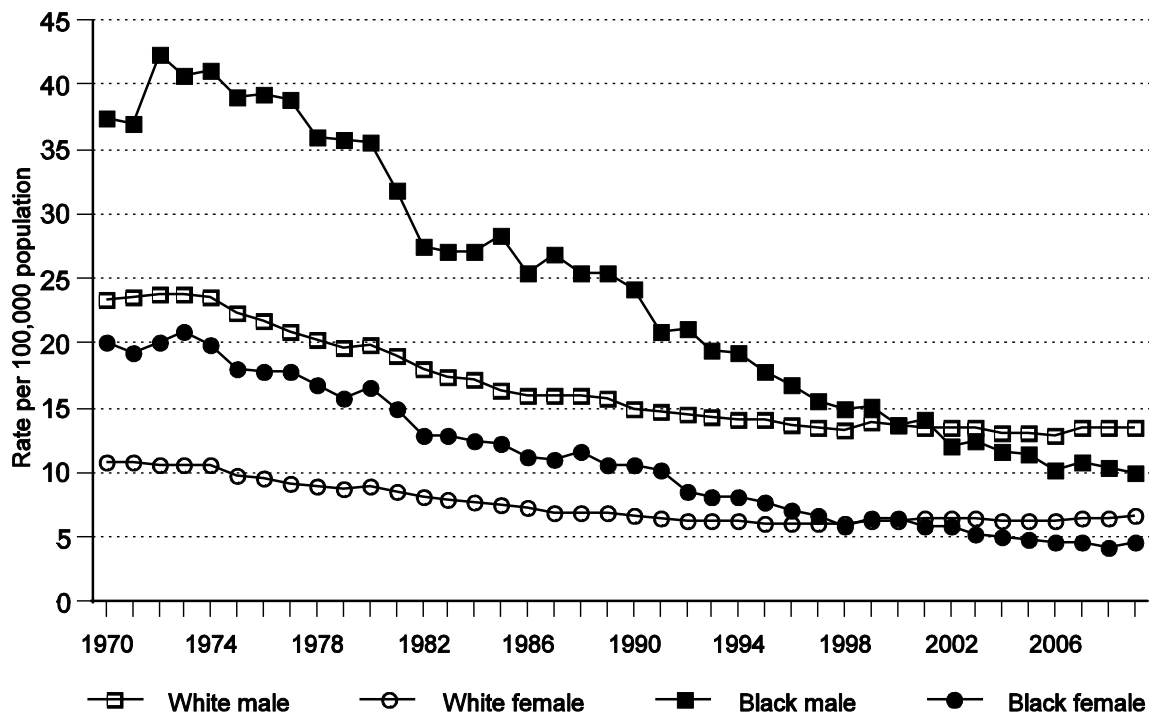


Figure 3. Age-specific death rates of liver cirrhosis, United States, 1970–2009.

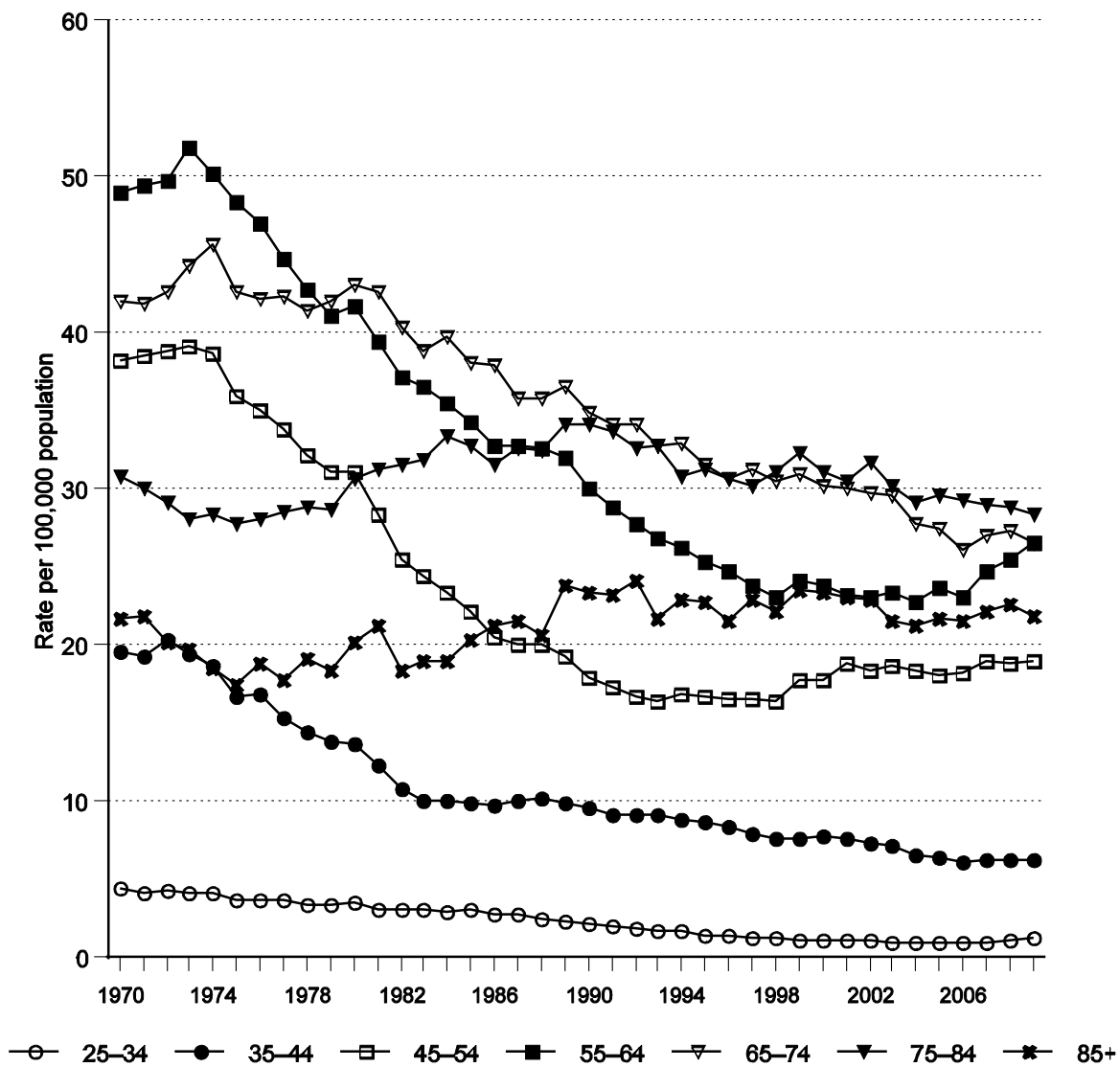
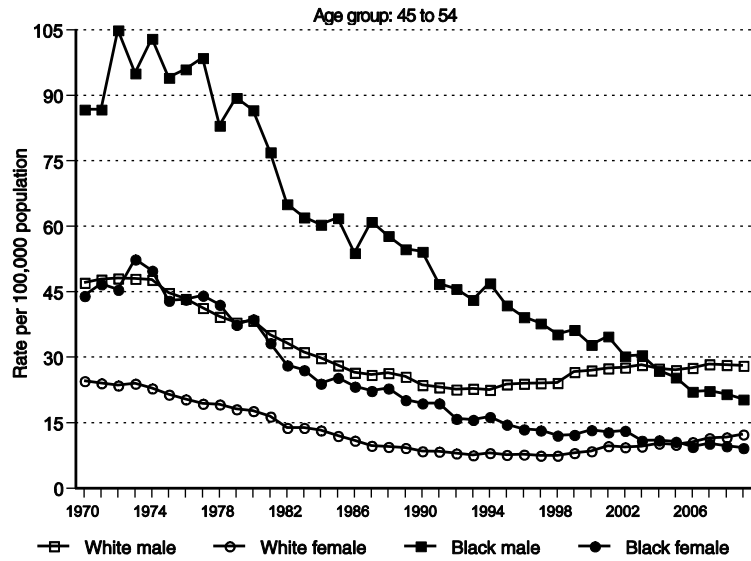
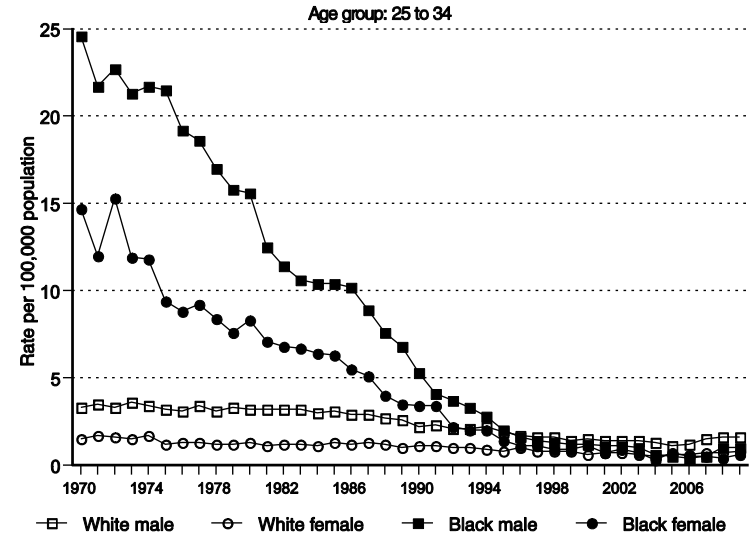
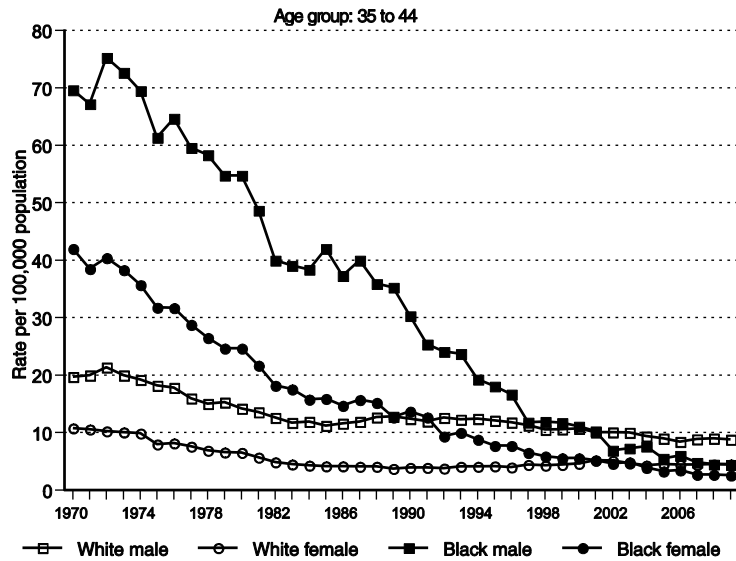


Figure 4. Age-specific death rates of liver cirrhosis by race and sex, United States, 1970–2009.

Note: Different age groups have different vertical scales (i.e., rates vary substantially by age).

(Continued on Page 15)



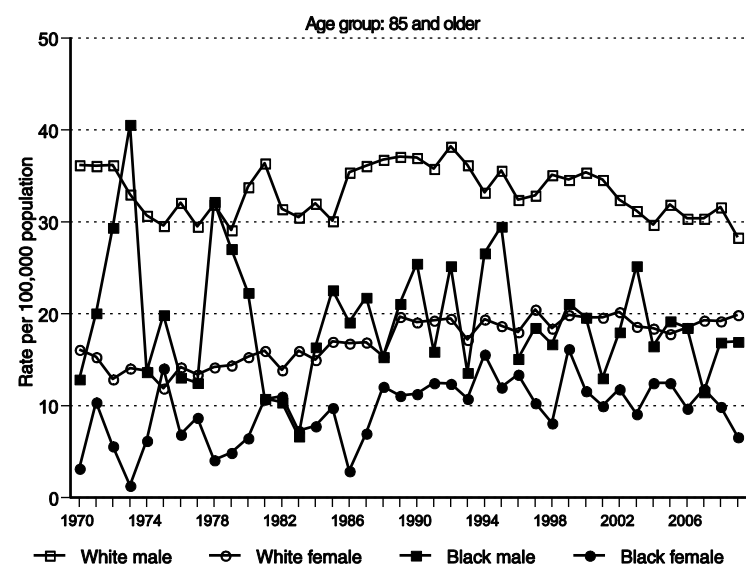
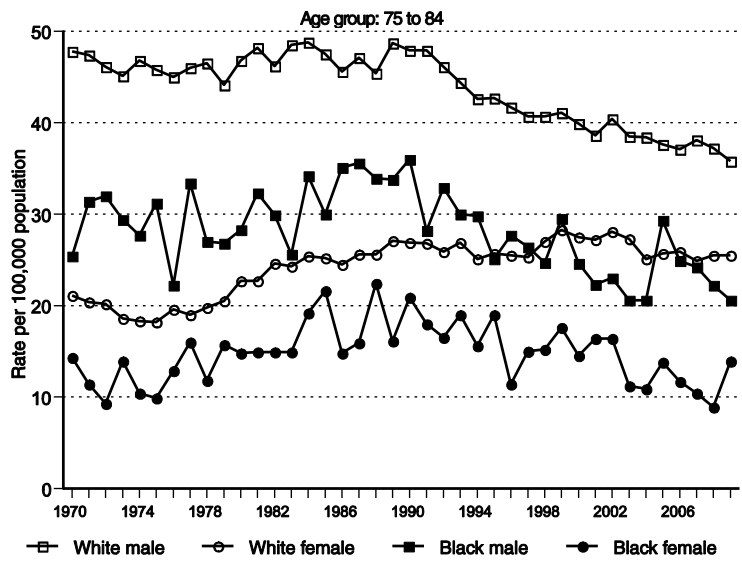
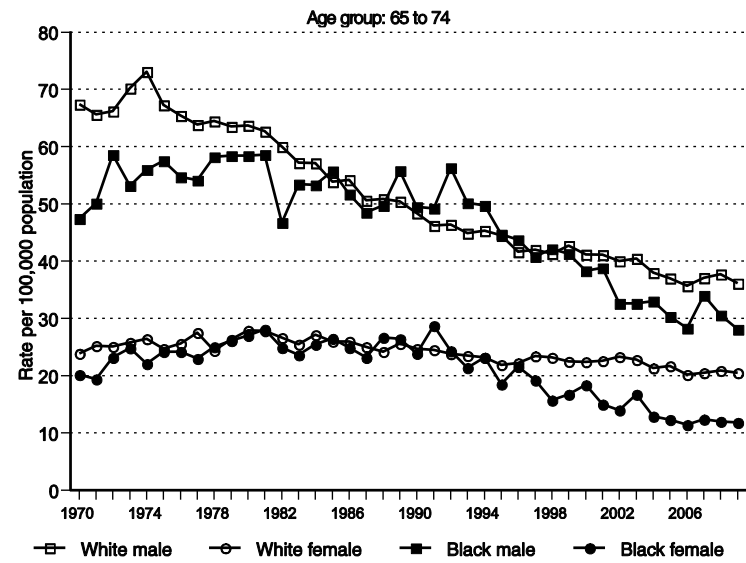
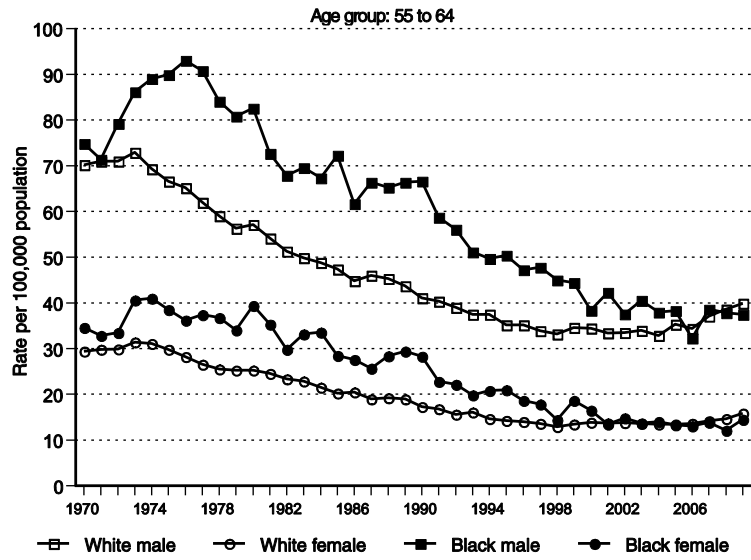


Figure 5. Age-adjusted death rates of liver cirrhosis by sex, race, and Hispanic origin, United States, 1970—2009.

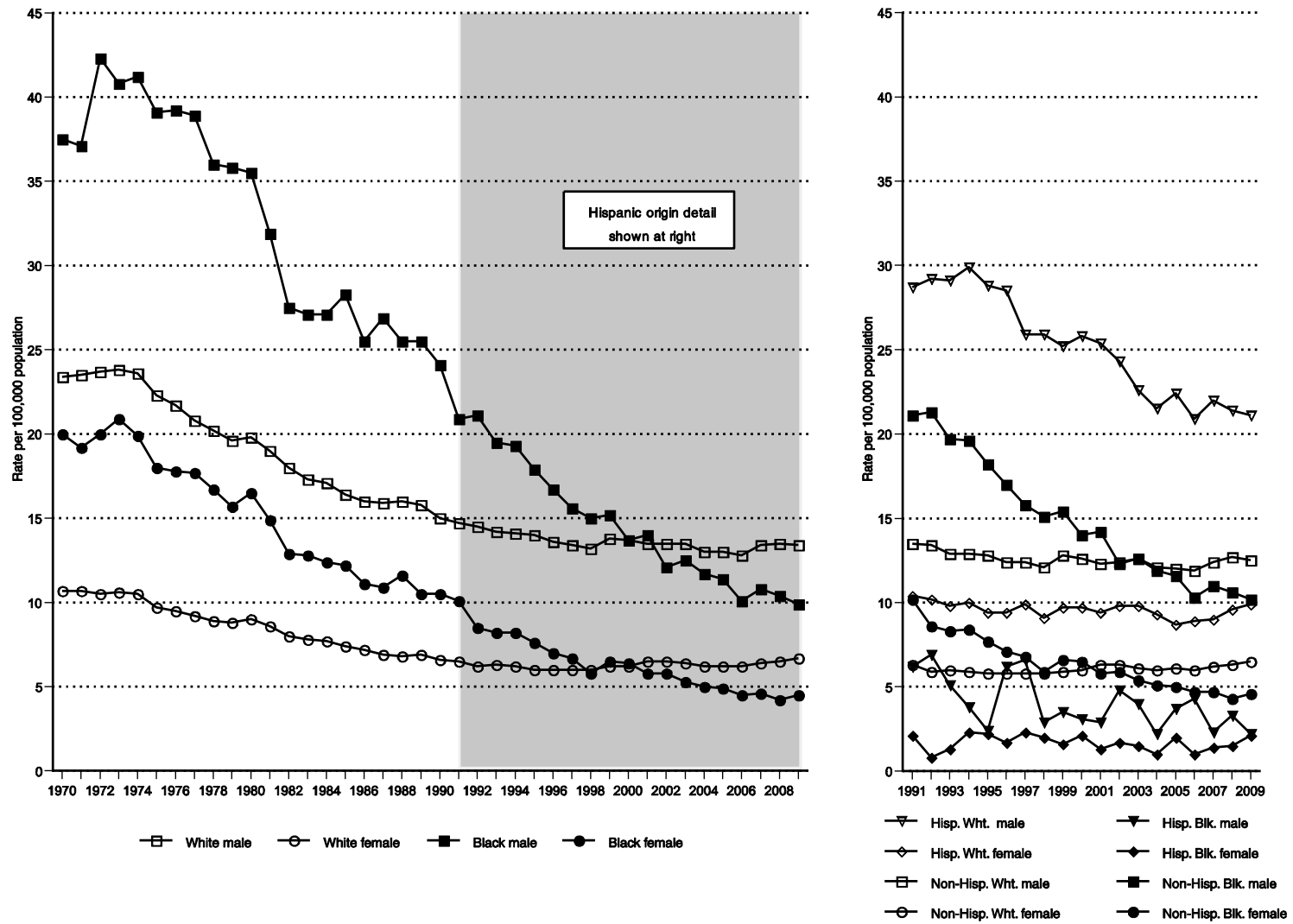


Figure 6. Age-adjusted death rates of liver cirrhosis reported with and without mention of alcohol, United States, 1970–2009.

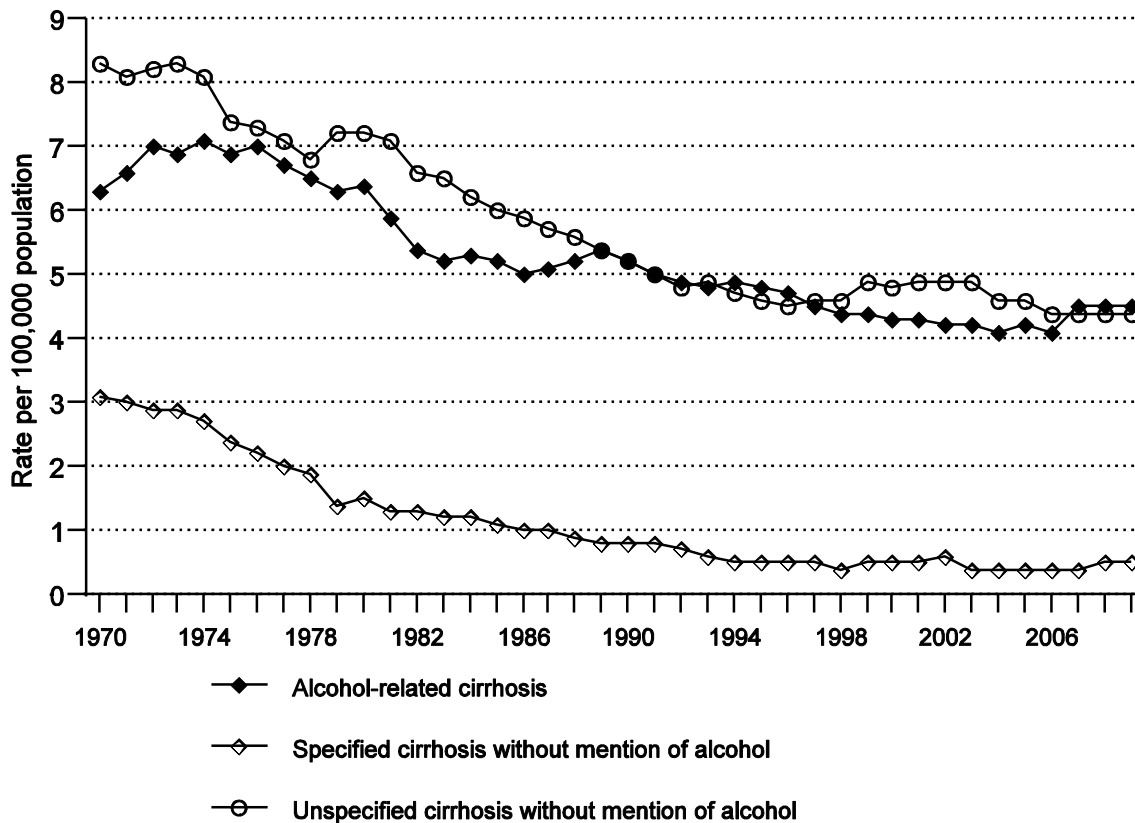


Figure 7. Percent of all cirrhosis deaths coded as alcohol-related by age, United States, 1970–2009.

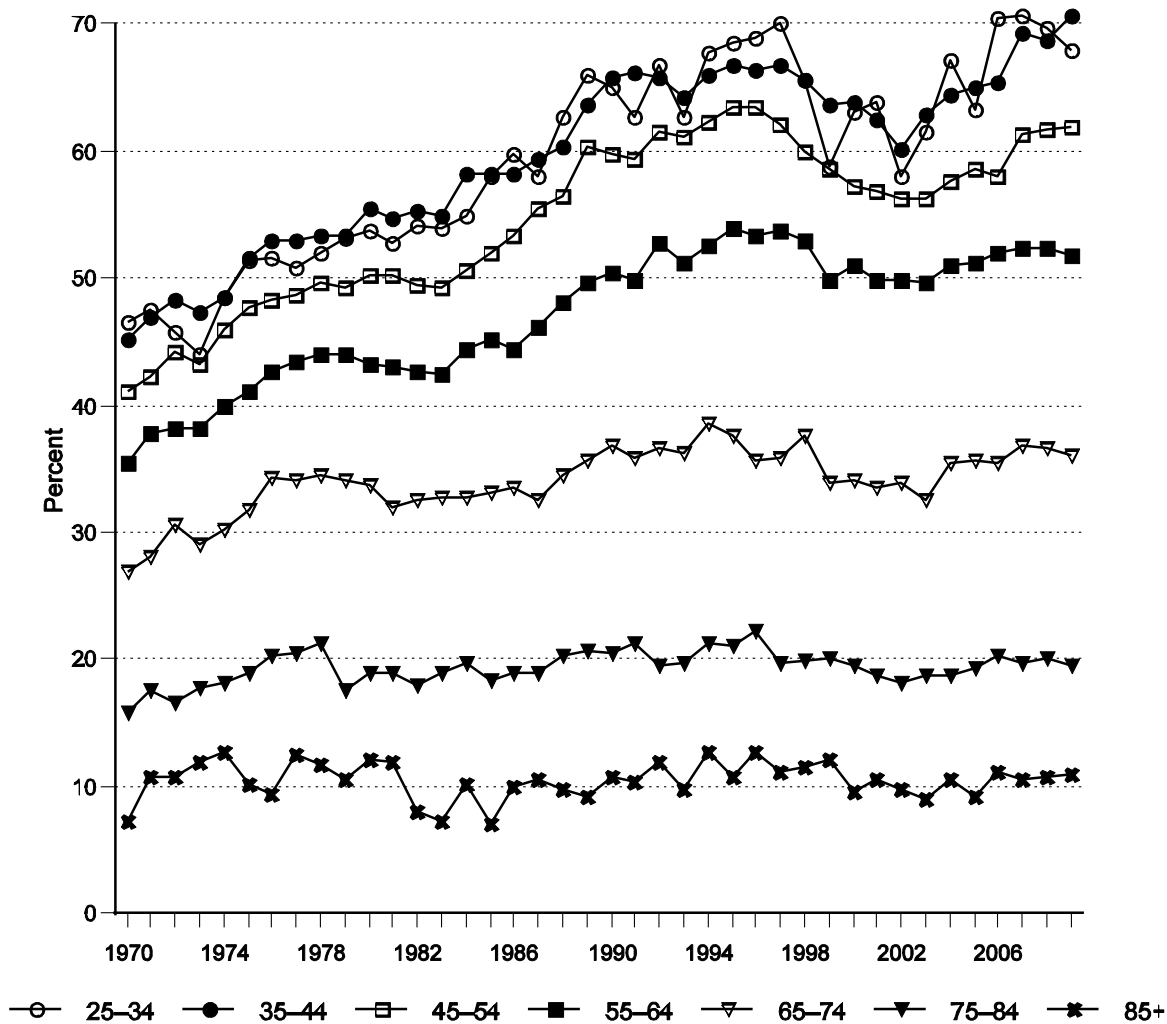


Figure 8. Age-adjusted death rates of alcohol-related liver cirrhosis by sex, race, and Hispanic origin, United States, 1970–2009.

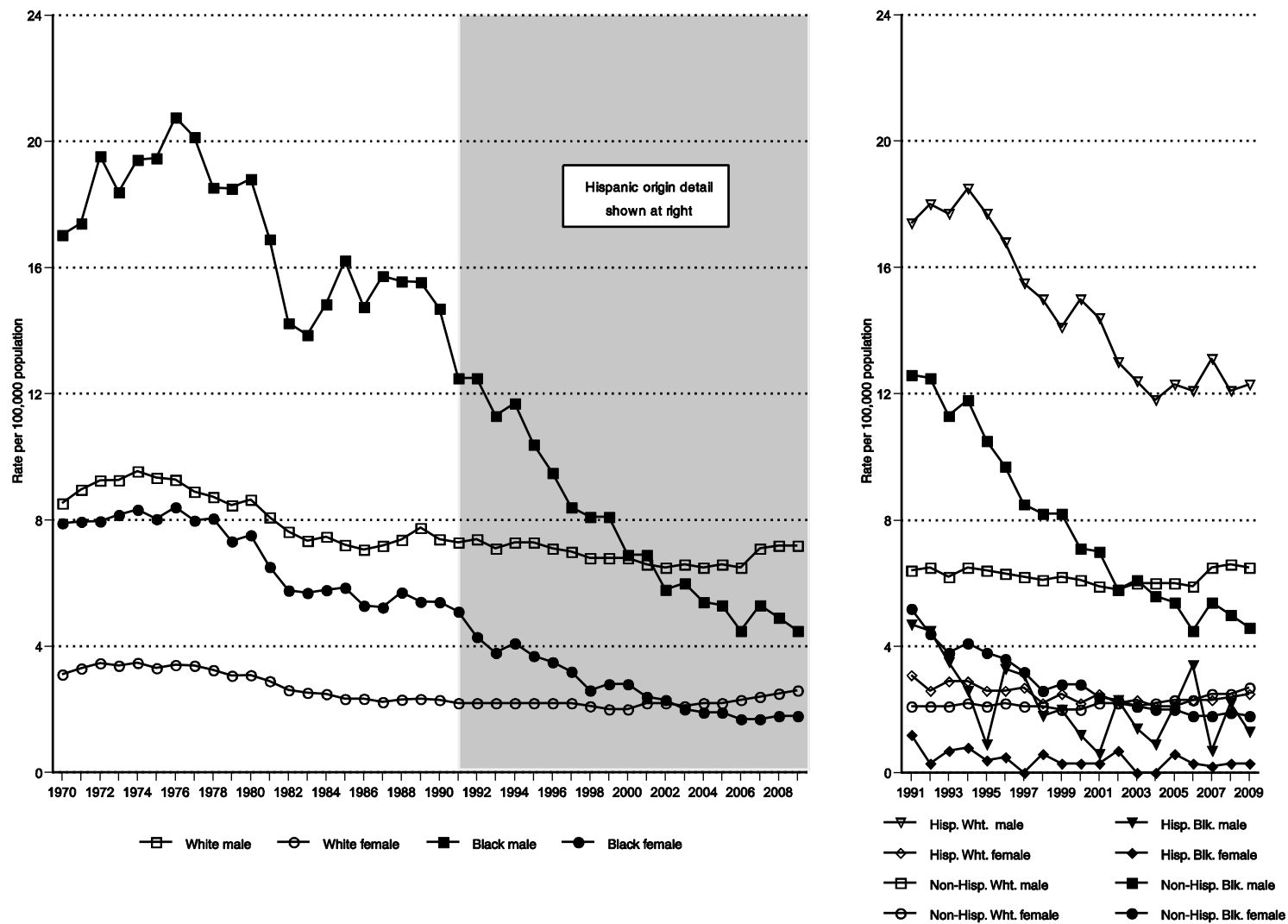


Figure 9. Age-adjusted death rates of specified liver cirrhosis without mention of alcohol by sex, race, and Hispanic origin, United States, 1970–2009.

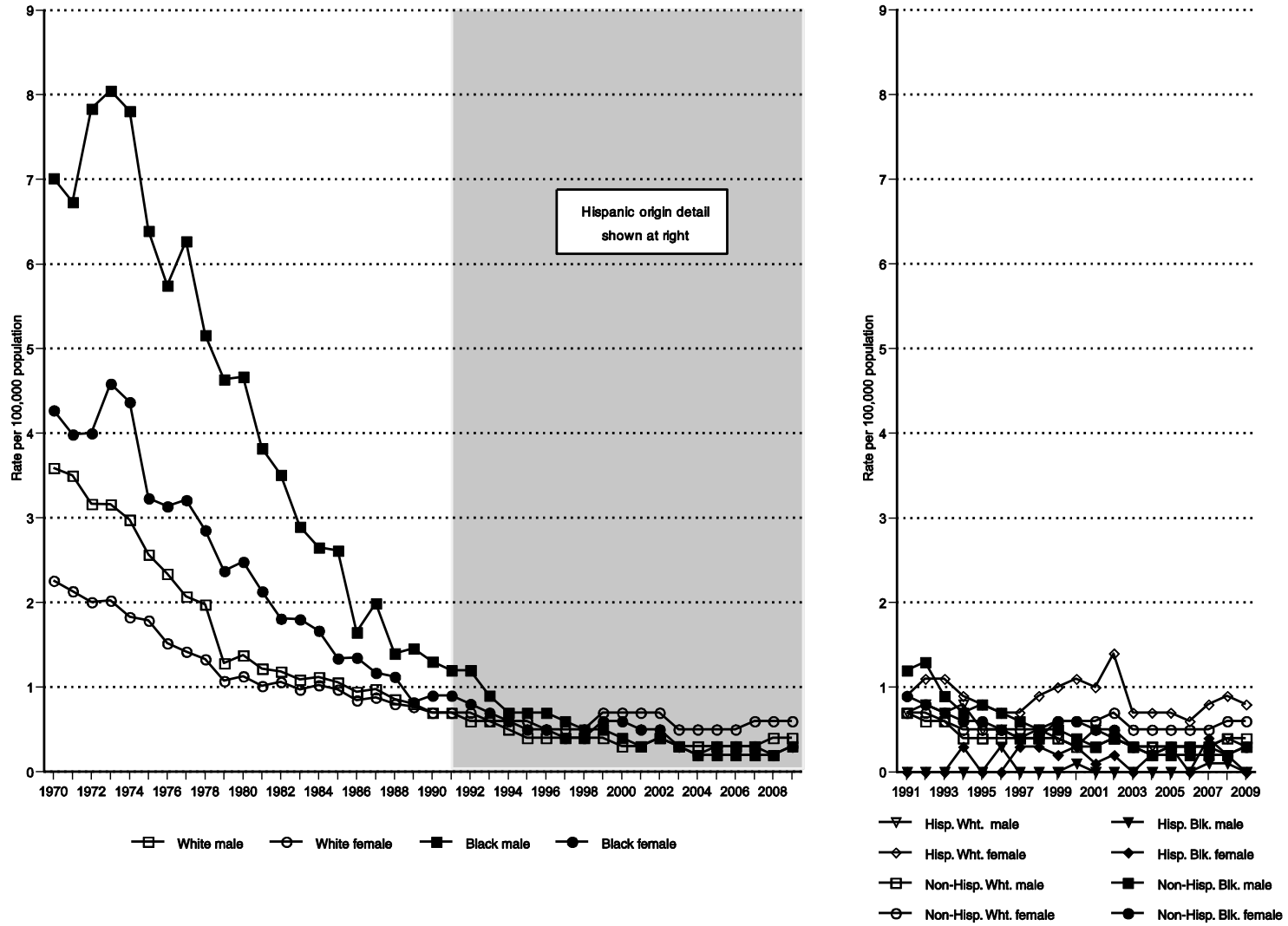


Figure 10. Age-adjusted death rates of unspecified liver cirrhosis without mention of alcohol by sex, race, and Hispanic origin, United States, 1970–2009.

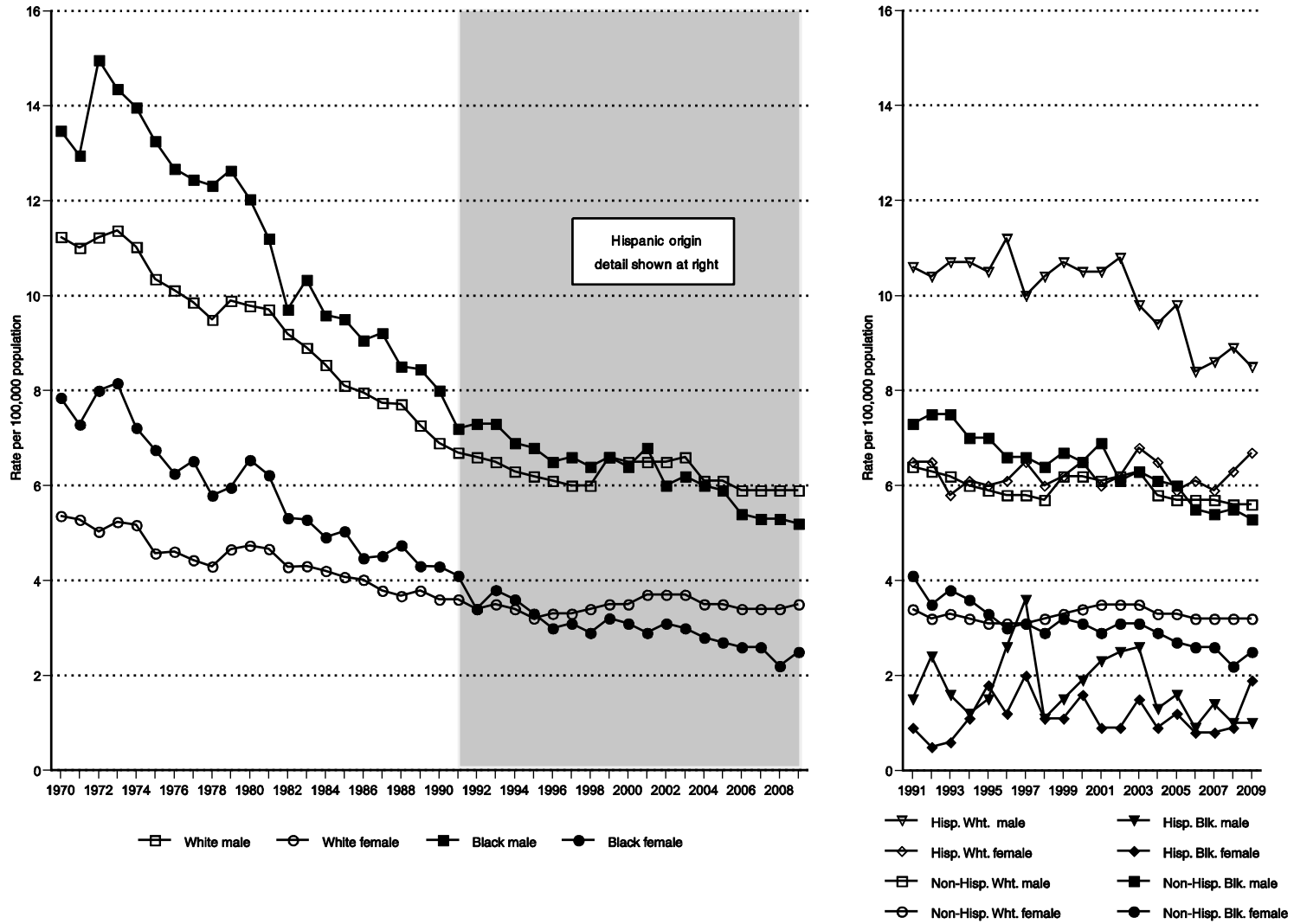
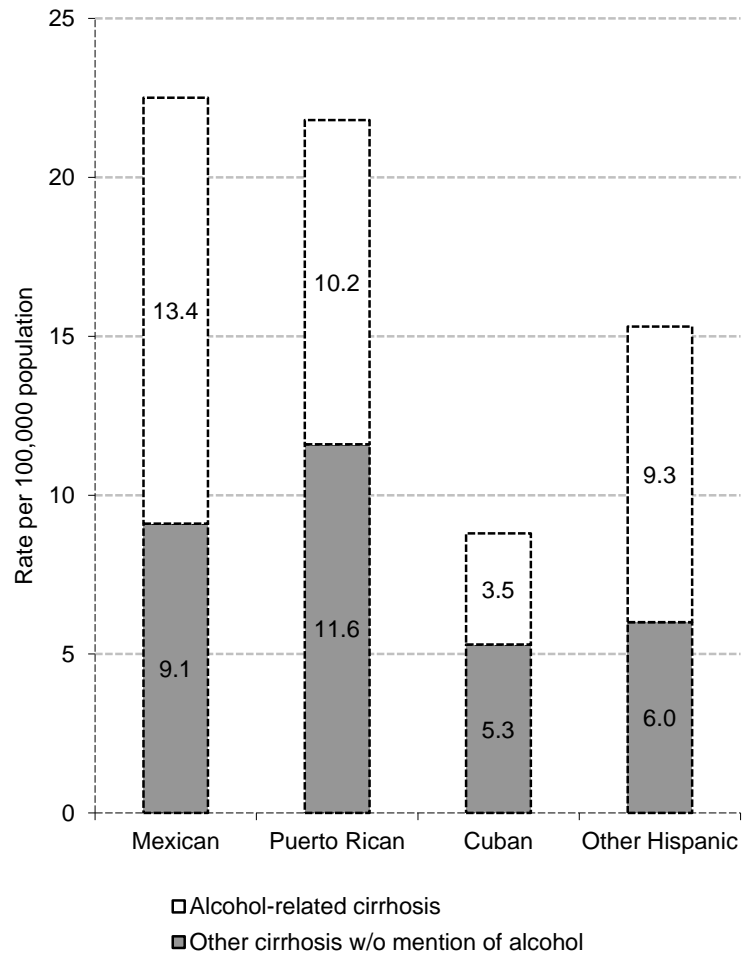
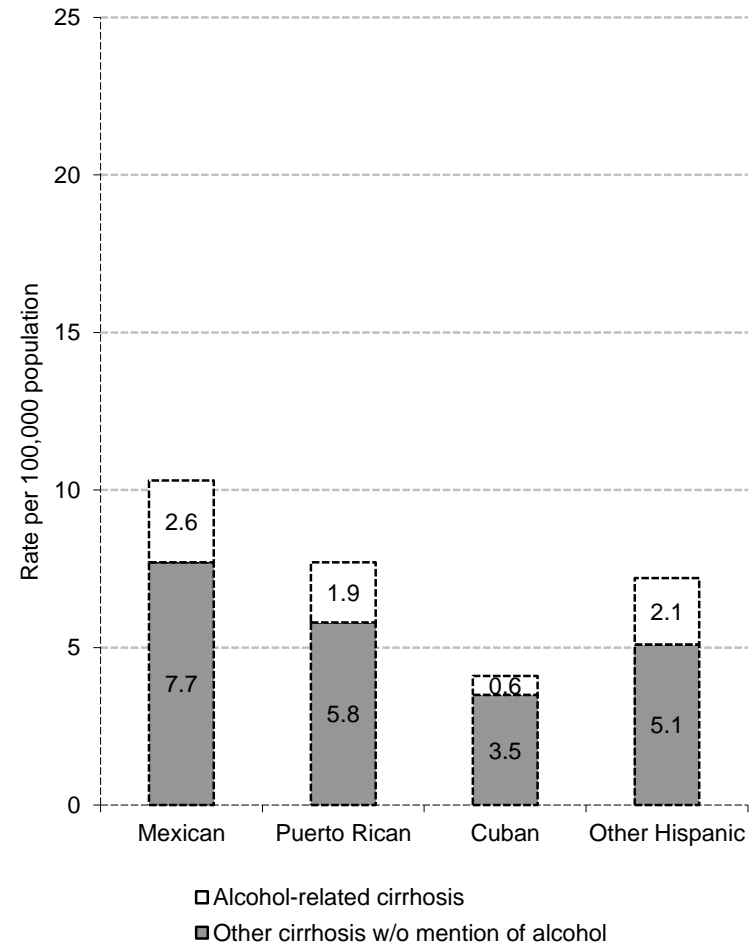


Figure 11. Five-year annual average of age-adjusted death rates of liver cirrhosis with and without mention of alcohol by Hispanic subgroup and sex, United States, 2005–2009.



Male



Female

Table 1. Age-adjusted death rates¹ from liver cirrhosis by sex (death registration States, 1910–1932, and United States, 1933–2009).

Year	Both Sexes	Male	Female	Year	Both Sexes	Male	Female
2009.....	9.4	12.7	6.4	1959.....	12.9	17.6	8.5
2008.....	9.4	13.0	6.2	1958.....	12.7	17.5	8.4
2007.....	9.3	12.9	6.1	1957.....	13.4	18.5	8.7
2006.....	9.0	12.3	6.0	1956.....	12.7	17.2	8.6
2005.....	9.2	12.6	6.0	1955.....	12.2	16.6	8.2
2004.....	9.1	12.7	6.0	1954.....	12.0	16.4	8.0
2003.....	9.5	13.2	6.2	1953.....	12.5	16.7	8.5
2002.....	9.6	13.1	6.4	1952.....	12.3	16.8	8.1
2001.....	9.7	13.4	6.4	1951.....	12.0	15.9	8.3
2000.....	9.7	13.5	6.3	1950.....	11.3	15.0	7.8
1999.....	9.8	13.8	6.2	1949.....	11.3	15.2	7.7
1998.....	9.4	13.3	6.0	1948.....	14.3	19.0	9.8
1997.....	9.6	13.5	6.1	1947.....	13.3	17.4	9.4
1996.....	9.7	13.8	6.1	1946.....	12.3	16.2	8.5
1995.....	9.9	14.3	6.2	1945.....	11.8	15.4	8.3
1994.....	10.2	14.5	6.4	1944.....	11.1	14.3	8.1
1993.....	10.3	14.6	6.6	1943.....	12.3	15.8	8.8
1992.....	10.5	15.1	6.5	1942.....	12.5	16.5	8.6
1991.....	10.8	15.2	7.0	1941.....	12.2	16.0	8.5
1990.....	11.1	15.8	7.1	1940.....	12.0	15.8	8.2
1989.....	11.7	16.7	7.4	1939.....	12.0	15.7	8.3
1988.....	11.7	16.8	7.4	1938.....	12.2	15.7	8.6
1987.....	11.8	16.9	7.4	1937.....	12.6	16.2	8.9
1986.....	11.9	16.8	7.7	1936.....	12.5	16.3	8.7
1985.....	12.3	17.5	8.0	1935.....	12.2	16.0	8.4
1984.....	12.7	18.1	8.3	1934.....	12.0	15.3	8.5
1983.....	12.9	18.2	8.4	1933 ³	11.9	14.7	9.0
1982.....	13.3	18.9	8.6	1932.....	11.6	14.6	8.5
1981.....	14.3	20.3	9.3	1931.....	12.1	15.3	8.9
1980.....	15.1	21.4	9.9	1930.....	12.0	14.8	9.0
1979.....	14.9	21.2	9.6	1929.....	12.1	14.9	9.1
1978.....	15.3	21.8	9.8	1928.....	12.8	16.2	9.3
1977.....	15.9	22.6	10.2	1927.....	13.0	16.2	9.6
1976.....	16.5	23.4	10.5	1926.....	12.8	15.9	9.5
1975.....	16.7	23.9	10.7	1925.....	13.1	16.1	10.1
1974.....	17.9	25.3	11.6	1924.....	13.1	16.6	9.5
1973.....	18.1	25.5	11.8	1923.....	13.4	16.9	9.8
1972 ²	18.0	25.5	11.6	1922.....	14.1	17.6	10.5
1971.....	17.8	24.8	11.8	1921.....	13.9	17.0	10.7
1970.....	17.8	24.8	11.8	1920.....	13.4	16.7	10.1
1969.....	17.1	23.8	11.4	1919.....	14.6	18.5	10.5
1968.....	16.9	23.3	11.5	1918.....	16.6	21.3	11.6
1967.....	16.3	22.4	11.0	1917.....	19.0	24.4	13.4
1966.....	15.9	22.0	10.6	1916.....	20.1	26.2	13.8
1965.....	14.9	20.5	10.1	1915.....	20.6	26.6	14.2
1964.....	14.2	19.4	9.6	1914.....	21.3	27.6	14.5
1963.....	14.0	19.0	9.5	1913.....	21.7	28.3	14.8
1962.....	13.8	19.0	9.1	1912.....	22.2	29.2	14.9
1961.....	13.3	18.3	8.8	1911.....	23.2	29.9	16.2
1960.....	13.3	18.4	8.7	1910.....	22.3	28.5	15.8

¹ Rates per 100,000 population computed by the direct standardization method, using the Year 2000 total population of the United States as the standard age distribution.

² Deaths based on a 50-percent sample.

³ Reporting States increased from 10 States and the District of Columbia in 1900 to the entire contiguous United States in 1933.

Table 2. Age-specific number of deaths, age-specific death rates, and age-adjusted death rates¹ from all liver cirrhosis by race, Hispanic origin, and sex, United States, 1970–2009.

Race, Hispanic origin, ² sex, and year	Number of deaths, by age group									Deaths per 100,000 population, by age group							Age-adjusted deaths per 100,000 population	
	All ³	0–24	25–34	35–44	45–54	55–64	65–74	75–84	85+	All	25–34	35–44	45–54	55–64	65–74	75–84		85+
All races, both sexes																		
2009	31,522	42	489	2,563	8,535	9,414	5,620	3,686	1,170	10.3	1.2	6.2	19.0	26.6	26.5	28.3	21.8	9.4
2008	30,858	54	456	2,659	8,406	8,727	5,608	3,774	1,173	10.1	1.1	6.3	18.9	25.5	27.3	28.9	22.6	9.4
2007	29,925	60	415	2,649	8,359	8,218	5,319	3,789	1,113	9.9	1.0	6.2	19.0	24.8	27.0	29.0	22.1	9.3
2006	28,193	52	348	2,647	7,883	7,362	5,017	3,836	1,044	9.5	0.9	6.1	18.2	23.1	26.1	29.3	21.5	9.0
2005	28,175	53	343	2,779	7,658	7,270	5,177	3,874	1,017	9.5	0.9	6.4	18.0	23.7	27.4	29.6	21.7	9.2
2004	27,554	65	340	2,906	7,630	6,668	5,192	3,783	969	9.4	0.9	6.6	18.3	22.8	27.8	29.1	21.3	9.2
2003	28,085	32	395	3,139	7,624	6,543	5,485	3,898	965	9.7	1.0	7.1	18.7	23.4	29.6	30.2	21.6	9.5
2002	27,794	65	417	3,272	7,361	6,177	5,453	4,043	1,002	9.7	1.1	7.3	18.4	23.1	29.7	31.7	22.9	9.6
2001	27,485	49	414	3,434	7,387	5,834	5,533	3,835	992	9.6	1.1	7.6	18.8	23.2	30.1	30.5	23.0	9.7
2000	27,005	56	442	3,485	6,780	5,836	5,544	3,866	993	9.6	1.1	7.7	17.8	23.9	30.2	31.1	23.3	9.7
1999	26,779	54	441	3,431	6,495	5,728	5,700	3,950	977	9.6	1.1	7.6	17.8	24.1	30.9	32.3	23.5	9.8
1998	25,303	44	507	3,380	5,767	5,301	5,669	3,734	896	9.2	1.2	7.6	16.4	23.0	30.5	31.1	22.2	9.4
1997	25,289	54	517	3,516	5,649	5,264	5,828	3,563	894	9.3	1.3	7.9	16.5	23.8	31.2	30.2	22.9	9.6
1996	25,163	50	572	3,656	5,441	5,332	5,753	3,532	817	9.3	1.4	8.4	16.6	24.7	30.6	30.6	21.5	9.7
1995	25,345	72	608	3,713	5,258	5,385	5,941	3,518	841	9.5	1.4	8.7	16.7	25.3	31.5	31.3	22.8	9.9
1994	25,520	59	737	3,711	5,061	5,557	6,184	3,387	817	9.7	1.7	8.9	16.8	26.3	32.9	30.8	22.9	10.2
1993	25,341	81	726	3,772	4,723	5,637	6,124	3,519	746	9.7	1.7	9.2	16.4	26.8	32.8	32.7	21.7	10.3
1992	25,407	70	769	3,619	4,592	5,807	6,300	3,445	799	9.9	1.8	9.1	16.7	27.7	34.1	32.6	24.1	10.5
1991	25,562	66	864	3,596	4,470	6,076	6,258	3,475	739	10.1	2.0	9.1	17.3	28.9	34.2	33.6	23.2	10.8
1990	25,920	76	894	3,623	4,517	6,332	6,311	3,439	713	10.4	2.1	9.6	17.9	30.0	34.9	34.1	23.3	11.1
1989	26,823	91	985	3,618	4,744	6,787	6,520	3,361	708	10.9	2.3	9.9	19.3	32.0	36.5	34.1	23.9	11.7
1988	26,572	87	1,061	3,581	4,801	7,020	6,303	3,116	595	10.9	2.5	10.2	20.0	32.6	35.8	32.4	20.6	11.7
1987	26,351	105	1,147	3,431	4,640	7,112	6,244	3,058	606	10.9	2.7	10.0	20.1	32.7	35.8	32.6	21.5	11.8
1986	26,310	109	1,186	3,207	4,646	7,203	6,494	2,877	580	11.0	2.8	9.7	20.5	32.7	37.9	31.5	21.2	11.9
1985	26,927	100	1,250	3,126	4,995	7,586	6,410	2,907	542	11.3	3.0	9.9	22.2	34.3	38.0	32.7	20.3	12.3
1984	27,468	126	1,168	3,084	5,244	7,856	6,609	2,880	494	11.6	2.9	10.1	23.4	35.5	39.7	33.3	19.0	12.7
1983	27,414	121	1,210	2,967	5,461	8,097	6,377	2,693	479	11.7	3.0	10.1	24.4	36.6	38.8	31.9	19.0	12.9
1982	27,838	147	1,204	3,021	5,726	8,194	6,501	2,591	447	12.0	3.1	10.8	25.5	37.2	40.3	31.6	18.3	13.3
1981	29,451	160	1,196	3,247	6,413	8,661	6,772	2,492	501	12.8	3.1	12.3	28.4	39.5	42.6	31.2	21.3	14.3
1980	30,730	180	1,293	3,498	7,077	9,081	6,738	2,389	459	13.5	3.5	13.6	31.1	41.7	43.1	30.7	20.2	15.1
1979	29,851	155	1,229	3,502	7,142	8,810	6,437	2,166	400	13.3	3.4	13.9	31.1	41.1	42.0	28.6	18.4	14.9
1978	30,066	178	1,180	3,506	7,453	8,996	6,209	2,132	397	13.5	3.4	14.4	32.2	42.7	41.4	28.8	19.2	15.3
1977	30,848	195	1,259	3,594	7,905	9,261	6,208	2,062	352	14.0	3.7	15.3	33.8	44.7	42.3	28.5	17.8	15.9
1976	31,453	183	1,172	3,886	8,263	9,558	6,040	1,985	353	14.5	3.6	16.9	35.0	47.0	42.2	28.1	18.9	16.5

Table 2. Age-specific number of deaths, age-specific death rates, and age-adjusted death rates¹ from all liver cirrhosis by race, Hispanic origin, and sex, United States, 1970–2009. (Continued)

Race, Hispanic origin, ² sex, and year	Number of deaths, by age group									Deaths per 100,000 population, by age group							Age-adjusted deaths per 100,000 population	
	All ³	0–24	25–34	35–44	45–54	55–64	65–74	75–84	85+	All	25–34	35–44	45–54	55–64	65–74	75–84		85+
1975	31,623	215	1,169	3,808	8,547	9,688	5,942	1,930	318	14.7	3.7	16.7	36.0	48.4	42.6	27.7	17.4	16.7
1974	33,319	227	1,257	4,237	9,205	9,926	6,208	1,929	322	15.6	4.2	18.6	38.7	50.2	45.6	28.3	18.5	17.9
1973	33,350	222	1,201	4,412	9,305	10,114	5,898	1,865	325	15.8	4.2	19.4	39.1	51.8	44.3	28.0	19.8	18.1
1972 ⁴	32,576	202	1,174	4,614	9,206	9,606	5,556	1,896	316	15.6	4.3	20.3	38.9	49.8	42.6	29.2	20.2	18.0
1971	31,808	266	1,088	4,412	9,040	9,414	5,352	1,901	324	15.4	4.2	19.3	38.5	49.5	41.9	30.1	21.8	17.8
1970	31,999	259	1,100	4,522	8,898	9,168	5,246	1,893	306	15.4	4.4	19.6	38.2	49.0	42.0	30.8	21.7	17.8
All races, male																		
2009	20,198	28	325	1,686	5,835	6,597	3,404	1,846	475	13.4	1.6	8.2	26.4	38.6	34.5	34.0	27.4	12.7
2008	20,056	32	310	1,746	5,877	6,203	3,450	1,925	512	13.4	1.5	8.3	26.9	37.7	36.3	35.5	30.8	13.0
2007	19,469	32	279	1,769	5,855	5,819	3,270	1,979	463	13.1	1.4	8.3	27.1	36.4	35.9	36.7	29.1	12.9
2006	18,165	29	231	1,711	5,618	5,164	3,040	1,922	447	12.4	1.2	8.0	26.4	33.5	34.3	35.8	29.4	12.3
2005	18,237	30	213	1,829	5,499	5,166	3,089	1,959	448	12.6	1.1	8.5	26.3	35.0	35.6	36.8	31.0	12.6
2004	17,826	34	245	1,978	5,464	4,629	3,152	1,931	393	12.4	1.2	9.1	26.7	32.8	36.8	36.8	28.5	12.7
2003	18,198	19	272	2,093	5,605	4,588	3,298	1,913	406	12.8	1.4	9.5	28.0	34.0	39.0	36.9	30.3	13.2
2002	17,710	38	264	2,141	5,375	4,273	3,238	1,974	403	12.5	1.3	9.6	27.4	33.3	38.7	38.7	31.2	13.1
2001	17,627	28	275	2,256	5,362	4,074	3,356	1,851	418	12.6	1.4	10.1	27.7	33.8	40.2	37.0	33.1	13.4
2000	17,451	32	295	2,394	5,044	4,037	3,339	1,885	422	12.6	1.5	10.7	27.0	34.4	40.2	38.4	34.1	13.5
1999	17,411	28	282	2,398	4,902	3,995	3,486	1,918	399	12.7	1.4	10.7	27.3	35.0	42.0	39.8	33.4	13.8
1998	16,412	28	332	2,347	4,315	3,751	3,404	1,840	390	12.1	1.6	10.6	25.0	34.0	40.8	39.1	34.0	13.3
1997	16,336	30	338	2,471	4,216	3,663	3,460	1,807	347	12.2	1.6	11.3	25.2	34.7	41.4	39.2	31.5	13.5
1996	16,381	29	361	2,648	4,026	3,704	3,461	1,810	335	12.4	1.7	12.3	25.1	35.9	41.2	40.5	31.6	13.8
1995	16,598	48	418	2,710	3,893	3,693	3,693	1,778	356	12.7	2.0	12.8	25.3	36.4	44.0	41.2	34.8	14.3
1994	16,581	30	490	2,695	3,671	3,858	3,760	1,744	326	12.9	2.3	13.0	24.9	38.3	45.1	41.6	33.1	14.5
1993	16,359	47	480	2,747	3,466	3,813	3,710	1,760	326	12.9	2.2	13.5	24.5	38.2	44.9	43.0	34.2	14.6
1992	16,572	39	504	2,711	3,338	4,000	3,832	1,804	338	13.2	2.3	13.7	24.8	40.2	47.0	45.2	36.9	15.1
1991	16,342	38	546	2,598	3,186	4,147	3,715	1,793	305	13.2	2.5	13.3	25.3	41.7	46.2	46.1	34.5	15.2
1990	16,695	35	560	2,652	3,265	4,281	3,813	1,771	306	13.7	2.6	14.2	26.5	43.0	48.0	46.9	36.0	15.8
1989	17,397	50	675	2,726	3,398	4,539	3,954	1,744	303	14.5	3.1	15.2	28.3	45.4	50.5	47.4	36.5	16.7
1988	17,297	49	713	2,610	3,431	4,725	3,894	1,587	281	14.5	3.3	15.0	29.4	46.7	50.5	44.4	34.7	16.8
1987	17,147	62	765	2,475	3,304	4,836	3,821	1,598	279	14.5	3.6	14.7	29.4	47.3	50.2	45.9	34.9	16.9
1986	16,886	61	797	2,296	3,213	4,745	3,994	1,509	264	14.4	3.8	14.1	29.1	46.0	53.4	44.6	33.9	16.8
1985	17,345	62	832	2,217	3,431	5,113	3,943	1,513	225	15.0	4.0	14.2	31.4	49.2	53.7	46.0	29.5	17.5
1984	17,662	76	797	2,184	3,571	5,194	4,084	1,523	227	15.4	3.9	14.6	32.8	50.0	56.5	47.5	30.4	18.1
1983	17,628	55	820	2,069	3,686	5,309	4,028	1,448	206	15.5	4.1	14.4	34.0	51.3	56.5	46.4	28.1	18.2

Table 2. Age-specific number of deaths, age-specific death rates, and age-adjusted death rates¹ from all liver cirrhosis by race, Hispanic origin, and sex, United States, 1970–2009. (Continued)

Race, Hispanic origin, ² sex, and year	Number of deaths, by age group									Deaths per 100,000 population, by age group							Age-adjusted deaths per 100,000 population	
	All ³	0–24	25–34	35–44	45–54	55–64	65–74	75–84	85+	All	25–34	35–44	45–54	55–64	65–74	75–84		85+
1982	18,004	80	821	2,102	3,936	5,393	4,095	1,360	211	16.0	4.2	15.3	36.2	52.3	58.5	44.8	29.4	18.9
1981	18,978	84	820	2,222	4,264	5,694	4,265	1,380	244	17.0	4.2	17.2	39.0	55.5	61.9	46.6	34.8	20.3
1980	19,866	101	868	2,339	4,725	6,012	4,276	1,307	225	18.0	4.7	18.5	43.0	59.1	63.0	45.3	32.7	21.4
1979	19,455	90	851	2,371	4,740	5,832	4,164	1,205	193	17.8	4.8	19.2	42.8	58.2	62.7	42.7	28.9	21.2
1978	19,693	100	795	2,340	4,851	6,018	4,134	1,240	204	18.2	4.6	19.6	43.4	61.0	63.7	45.0	31.7	21.8
1977	20,167	108	853	2,367	5,240	6,236	3,969	1,212	175	18.9	5.1	20.6	46.5	64.3	62.5	44.9	28.2	22.6
1976	20,668	106	790	2,566	5,474	6,426	3,976	1,141	180	19.5	4.9	22.8	48.1	67.3	64.2	43.0	30.2	23.4
1975	20,830	109	793	2,527	5,630	6,436	4,000	1,164	168	19.9	5.1	22.7	49.2	68.5	66.1	44.6	28.8	23.9
1974	21,806	128	804	2,711	6,027	6,581	4,214	1,170	164	21.0	5.4	24.4	52.6	70.8	71.1	45.4	29.1	25.3
1973	21,782	118	785	2,827	5,986	6,791	3,973	1,115	181	21.2	5.5	25.5	52.3	73.8	68.5	43.9	33.5	25.5
1972 ⁴	21,422	94	716	2,980	6,050	6,532	3,736	1,126	186	21.0	5.3	26.8	53.1	71.8	65.7	44.9	35.5	25.5
1971	20,680	124	685	2,763	5,823	6,380	3,578	1,140	176	20.5	5.4	24.8	51.4	71.1	64.2	46.0	34.7	24.8
1970	20,382	116	688	2,790	5,691	6,217	3,583	1,126	166	20.5	5.6	24.9	50.6	70.3	65.6	46.0	33.9	24.8
All races, female																		
2009	11,324	14	164	877	2,700	2,817	2,216	1,840	695	7.3	0.8	4.2	11.8	15.4	19.5	24.2	19.1	6.4
2008	10,802	22	146	913	2,529	2,524	2,158	1,849	661	7.0	0.7	4.3	11.2	14.3	19.6	24.1	18.7	6.2
2007	10,456	28	136	880	2,504	2,399	2,049	1,810	650	6.8	0.7	4.1	11.2	14.0	19.3	23.5	18.9	6.1
2006	10,028	23	117	936	2,265	2,198	1,977	1,914	597	6.6	0.6	4.3	10.3	13.3	19.1	24.8	17.8	6.0
2005	9,938	23	130	950	2,159	2,104	2,088	1,915	569	6.6	0.7	4.3	10.0	13.3	20.5	24.7	17.5	6.1
2004	9,728	31	95	928	2,166	2,039	2,040	1,852	576	6.5	0.5	4.2	10.2	13.4	20.2	23.9	18.2	6.0
2003	9,887	13	123	1,046	2,019	1,955	2,187	1,985	559	6.7	0.6	4.7	9.7	13.5	21.8	25.7	17.9	6.2
2002	10,084	27	153	1,131	1,986	1,904	2,215	2,069	599	6.9	0.8	5.0	9.8	13.7	22.1	27.0	19.5	6.4
2001	9,858	21	139	1,178	2,025	1,760	2,177	1,984	574	6.8	0.7	5.2	10.1	13.5	21.7	26.1	18.8	6.4
2000	9,554	24	147	1,091	1,736	1,799	2,205	1,981	571	6.7	0.8	4.8	9.0	14.2	21.9	26.4	18.9	6.3
1999	9,368	26	159	1,033	1,593	1,733	2,214	2,032	578	6.6	0.8	4.6	8.5	14.0	21.9	27.4	19.5	6.2
1998	8,891	16	175	1,033	1,452	1,550	2,265	1,894	506	6.3	0.9	4.6	8.1	12.9	22.1	25.9	17.5	6.0
1997	8,953	24	179	1,045	1,433	1,601	2,368	1,756	547	6.4	0.9	4.7	8.2	13.9	22.9	24.4	19.5	6.1
1996	8,782	21	211	1,008	1,415	1,628	2,292	1,722	482	6.4	1.0	4.6	8.5	14.4	22.0	24.4	17.6	6.1
1995	8,747	24	190	1,003	1,365	1,692	2,248	1,740	485	6.4	0.9	4.7	8.5	15.2	21.5	25.2	18.3	6.2
1994	8,939	29	247	1,016	1,390	1,699	2,424	1,643	491	6.6	1.2	4.8	9.0	15.3	23.2	24.2	19.1	6.4
1993	8,982	34	246	1,025	1,257	1,824	2,414	1,759	420	6.8	1.2	5.0	8.5	16.5	23.1	26.4	16.8	6.6
1992	8,835	31	265	908	1,254	1,807	2,468	1,641	461	6.7	1.2	4.5	8.9	16.4	23.9	25.0	19.2	6.5
1991	9,220	28	318	998	1,284	1,929	2,543	1,682	434	7.1	1.5	5.0	9.7	17.4	24.8	26.1	18.8	7.0
1990	9,225	41	334	971	1,252	2,051	2,498	1,668	407	7.2	1.5	5.1	9.7	18.4	24.6	26.4	18.4	7.1

Table 2. Age-specific number of deaths, age-specific death rates, and age-adjusted death rates¹ from all liver cirrhosis by race, Hispanic origin, and sex, United States, 1970–2009. (Continued)

Race, Hispanic origin, ² sex, and year	Number of deaths, by age group									Deaths per 100,000 population, by age group								Age-adjusted deaths per 100,000 population
	All ³	0–24	25–34	35–44	45–54	55–64	65–74	75–84	85+	All	25–34	35–44	45–54	55–64	65–74	75–84	85+	
1989	9,426	41	310	892	1,346	2,248	2,566	1,617	405	7.4	1.4	4.8	10.7	20.0	25.6	26.2	19.0	7.4
1988	9,275	38	348	971	1,370	2,295	2,409	1,529	314	7.4	1.6	5.4	11.2	20.1	24.3	25.3	15.1	7.4
1987	9,204	43	382	956	1,336	2,276	2,423	1,460	327	7.4	1.8	5.5	11.3	19.7	24.7	24.8	16.1	7.4
1986	9,424	48	389	911	1,433	2,458	2,500	1,368	316	7.6	1.8	5.4	12.3	21.1	25.9	23.8	16.1	7.7
1985	9,582	38	418	909	1,564	2,473	2,467	1,394	317	7.8	2.0	5.6	13.5	21.0	25.9	24.9	16.6	8.0
1984	9,806	50	371	900	1,673	2,662	2,525	1,357	267	8.1	1.8	5.8	14.5	22.6	26.9	24.9	14.4	8.3
1983	9,786	66	390	898	1,775	2,788	2,349	1,245	273	8.1	1.9	6.0	15.4	23.7	25.3	23.5	15.3	8.4
1982	9,834	67	383	919	1,790	2,801	2,406	1,231	236	8.3	1.9	6.4	15.5	23.9	26.3	23.8	13.7	8.6
1981	10,473	76	376	1,025	2,149	2,967	2,507	1,112	257	8.9	1.9	7.6	18.4	25.4	27.9	22.1	15.6	9.3
1980	10,864	79	425	1,159	2,352	3,069	2,462	1,082	234	9.3	2.3	8.8	20.0	26.5	27.8	22.1	14.8	9.9
1979	10,396	65	378	1,131	2,402	2,978	2,273	961	207	9.0	2.1	8.8	20.2	26.1	26.2	20.2	13.8	9.6
1978	10,373	78	385	1,166	2,602	2,978	2,075	892	193	9.1	2.2	9.4	21.7	26.6	24.4	19.2	13.5	9.8
1977	10,681	87	406	1,227	2,665	3,025	2,239	850	177	9.5	2.4	10.2	22.0	27.5	26.9	18.8	13.1	10.2
1976	10,785	77	382	1,320	2,789	3,132	2,064	844	173	9.7	2.3	11.2	22.8	29.0	25.4	19.2	13.6	10.5
1975	10,793	106	376	1,281	2,917	3,252	1,942	766	150	9.8	2.4	11.0	23.7	30.6	24.6	17.6	12.0	10.7
1974	11,513	99	453	1,526	3,178	3,345	1,994	759	158	10.5	3.0	13.1	25.8	32.0	25.9	17.9	13.5	11.6
1973	11,568	104	416	1,585	3,319	3,323	1,925	750	144	10.7	2.9	13.6	26.9	32.2	25.7	18.2	13.1	11.8
1972 ⁴	11,154	108	458	1,634	3,156	3,074	1,820	770	130	10.4	3.3	14.0	25.7	30.1	24.8	19.4	12.5	11.6
1971	11,128	142	403	1,649	3,217	3,034	1,774	761	148	10.5	3.1	14.1	26.4	30.2	24.7	19.8	15.1	11.8
1970	11,017	143	412	1,732	3,207	2,951	1,663	767	140	10.5	3.2	14.6	26.6	29.9	23.7	20.7	15.2	11.8
White, male																		
2009	17,827	16	262	1,445	5,082	5,760	3,082	1,733	445	14.7	1.6	8.8	28.1	39.9	36.1	35.8	28.3	13.4
2008	17,658	26	255	1,510	5,093	5,398	3,098	1,800	477	14.7	1.6	9.0	28.3	38.6	37.7	37.2	31.6	13.5
2007	17,084	19	236	1,518	5,064	5,042	2,923	1,839	440	14.3	1.5	8.9	28.4	37.1	37.1	38.1	30.4	13.4
2006	16,000	22	188	1,459	4,862	4,523	2,738	1,785	420	13.5	1.2	8.4	27.6	34.4	35.7	37.1	30.4	12.8
2005	15,945	20	169	1,578	4,696	4,468	2,796	1,797	418	13.5	1.1	9.0	27.1	35.3	37.0	37.6	31.9	13.0
2004	15,582	24	204	1,668	4,676	3,988	2,835	1,815	372	13.3	1.3	9.4	27.4	32.9	38.0	38.4	29.7	13.0
2003	15,908	13	224	1,797	4,742	3,956	2,994	1,798	380	13.7	1.4	10.0	28.3	34.0	40.5	38.5	31.2	13.5
2002	15,539	34	216	1,836	4,561	3,711	2,935	1,862	380	13.5	1.4	10.1	27.7	33.5	40.0	40.4	32.4	13.5
2001	15,235	18	223	1,866	4,483	3,477	3,021	1,745	396	13.3	1.4	10.1	27.5	33.4	41.1	38.6	34.6	13.5
2000	15,189	20	236	1,984	4,259	3,499	3,022	1,772	395	13.4	1.5	10.7	27.0	34.5	41.2	39.9	35.4	13.7
1999	15,208	22	234	1,970	4,078	3,413	3,142	1,794	373	13.3	1.4	10.6	26.7	34.6	42.7	41.1	34.6	13.8
1998	14,151	23	269	1,952	3,568	3,177	3,056	1,739	364	12.7	1.6	10.5	24.2	33.2	41.3	40.7	35.1	13.2
1997	14,109	23	276	2,077	3,464	3,105	3,131	1,702	327	12.8	1.6	11.3	24.1	33.9	42.0	40.7	32.9	13.4

Table 2. Age-specific number of deaths, age-specific death rates, and age-adjusted death rates¹ from all liver cirrhosis by race, Hispanic origin, and sex, United States, 1970–2009. (Continued)

Race, Hispanic origin, ² sex, and year	Number of deaths, by age group									Deaths per 100,000 population, by age group							Age-adjusted deaths per 100,000 population	
	All ³	0–24	25–34	35–44	45–54	55–64	65–74	75–84	85+	All	25–34	35–44	45–54	55–64	65–74	75–84		85+
1996	14,051	28	289	2,145	3,310	3,151	3,120	1,693	310	12.8	1.7	11.8	24.0	35.2	41.6	41.7	32.4	13.6
1995	14,163	30	333	2,159	3,163	3,119	3,346	1,677	329	13.1	1.9	12.1	23.8	35.2	44.5	42.7	35.6	14.0
1994	14,076	20	392	2,160	2,886	3,305	3,382	1,628	296	13.1	2.2	12.4	22.6	37.5	45.3	42.6	33.2	14.1
1993	13,888	33	373	2,107	2,791	3,283	3,332	1,652	311	13.1	2.1	12.3	22.8	37.5	44.9	44.4	36.2	14.2
1992	13,978	27	377	2,107	2,654	3,418	3,399	1,675	316	13.3	2.1	12.6	22.7	39.0	46.4	46.1	38.2	14.5
1991	13,850	24	413	1,997	2,536	3,546	3,347	1,692	286	13.4	2.3	12.0	23.2	40.4	46.2	47.9	35.8	14.7
1990	13,950	29	402	1,972	2,528	3,620	3,462	1,644	285	13.6	2.2	12.4	23.7	41.1	48.4	47.9	37.0	15.0
1989	14,492	33	467	1,978	2,680	3,871	3,558	1,623	278	14.3	2.6	12.8	25.6	43.7	50.4	48.7	37.1	15.8
1988	14,471	33	497	1,901	2,682	4,067	3,543	1,473	269	14.4	2.7	12.7	26.4	45.3	50.9	45.4	36.8	16.0
1987	14,259	47	520	1,736	2,546	4,181	3,479	1,487	260	14.3	2.9	11.9	26.0	46.0	50.6	47.1	36.1	15.9
1986	14,174	43	521	1,633	2,543	4,130	3,656	1,396	249	14.3	2.9	11.6	26.5	44.8	54.2	45.6	35.4	16.0
1985	14,402	44	554	1,513	2,688	4,403	3,571	1,416	207	14.6	3.1	11.2	28.2	47.4	53.9	47.5	30.1	16.4
1984	14,874	54	522	1,556	2,846	4,535	3,726	1,416	216	15.2	3.0	11.9	29.9	48.8	57.1	48.8	32.0	17.1
1983	14,910	39	548	1,466	2,970	4,632	3,677	1,370	202	15.3	3.2	11.7	31.2	49.9	57.2	48.5	30.5	17.3
1982	15,323	55	539	1,518	3,187	4,754	3,790	1,271	204	15.9	3.2	12.6	33.3	51.3	60.0	46.2	31.4	18.0
1981	15,946	62	527	1,534	3,394	5,002	3,900	1,292	232	16.6	3.2	13.6	35.1	54.2	62.7	48.2	36.4	19.0
1980	16,492	75	520	1,574	3,745	5,236	3,897	1,226	212	17.3	3.2	14.2	38.4	57.1	63.7	46.8	33.8	19.8
1979	16,178	60	518	1,660	3,744	5,082	3,803	1,127	177	17.1	3.3	15.3	38.0	56.3	63.5	44.1	29.1	19.6
1978	16,413	67	461	1,579	3,923	5,249	3,775	1,163	187	17.5	3.1	15.0	39.3	59.0	64.5	46.5	31.9	20.2
1977	16,727	69	495	1,623	4,160	5,426	3,653	1,130	167	18.0	3.4	16.0	41.3	62.0	63.8	46.0	29.5	20.8
1976	17,221	65	441	1,762	4,418	5,618	3,650	1,086	174	18.7	3.1	17.8	43.4	65.2	65.4	45.0	32.1	21.7
1975	17,458	72	435	1,789	4,591	5,650	3,672	1,090	157	19.1	3.2	18.2	44.8	66.6	67.3	45.8	29.6	22.3
1974	18,322	92	449	1,880	4,913	5,820	3,905	1,102	157	20.2	3.4	19.2	47.8	69.3	73.1	46.8	30.7	23.6
1973	18,372	67	449	1,963	4,943	6,061	3,676	1,049	162	20.4	3.6	20.0	48.0	72.9	70.2	45.1	33.0	23.8
1972 ⁴	17,964	56	392	2,102	4,932	5,846	3,400	1,062	172	20.1	3.3	21.4	48.1	71.0	66.2	46.1	36.2	23.7
1971	17,672	78	389	1,982	4,887	5,773	3,306	1,081	166	20.0	3.5	20.0	47.9	71.0	65.6	47.4	36.1	23.5
1970	17,389	84	361	1,969	4,775	5,662	3,335	1,078	161	19.9	3.3	19.7	47.1	70.2	67.4	47.8	36.2	23.4
White, Hispanic, male																		
2009	2,944	6	101	386	917	837	456	189	52	13.0	2.6	11.5	38.1	62.5	69.6	59.3	62.0	21.1
2008	2,850	7	90	376	923	782	439	183	50	12.9	2.3	11.5	40.2	62.0	70.5	59.8	64.9	21.4
2007	2,781	6	84	384	915	713	438	198	42	13.0	2.2	12.0	41.9	60.0	73.9	67.1	59.5	22.0
2006	2,516	10	66	358	843	657	343	191	46	12.1	1.8	11.5	40.7	58.7	60.3	67.5	71.0	20.9
2005	2,563	8	67	368	814	661	408	207	27	12.7	1.8	12.3	41.4	63.0	74.6	76.7	44.9	22.4
2004	2,376	10	67	375	818	553	337	195	21	12.2	1.8	12.9	44.2	56.4	64.0	76.6	37.7	21.5

Table 2. Age-specific number of deaths, age-specific death rates, and age-adjusted death rates¹ from all liver cirrhosis by race, Hispanic origin, and sex, United States, 1970–2009. (Continued)

Race, Hispanic origin, ² sex, and year	Number of deaths, by age group									Deaths per 100,000 population, by age group								Age-adjusted deaths per 100,000 population	
	All ³	0–24	25–34	35–44	45–54	55–64	65–74	75–84	85+	All	25–34	35–44	45–54	55–64	65–74	75–84	85+		
2003	2,377	4	82	384	760	612	331	181	23	12.6	2.3	13.7	43.3	66.5	65.3	75.4	43.5	22.6	
2002	2,433	9	71	407	798	560	403	157	27	13.3	2.0	15.0	48.1	64.8	82.6	69.6	53.8	24.3	
2001	2,412	5	68	421	782	555	386	171	23	13.6	2.0	16.1	49.9	68.6	81.9	81.0	47.2	25.4	
2000	2,306	6	82	403	706	524	393	162	30	13.5	2.5	16.1	48.0	68.4	86.6	82.2	63.2	25.8	
1999	2,153	8	69	428	642	480	359	136	31	13.3	2.2	18.0	46.9	66.3	82.9	74.1	69.7	25.2	
1998	2,085	3	83	391	594	506	347	131	30	13.5	2.7	17.4	46.6	73.6	82.7	76.1	70.6	25.9	
1997	1,983	9	71	393	583	460	298	140	28	13.5	2.4	18.5	48.9	70.7	73.2	86.5	69.2	25.9	
1996	2,068	11	70	427	572	456	361	144	25	14.9	2.5	21.4	51.5	73.5	91.7	94.6	64.2	28.5	
1995	1,997	10	78	392	539	486	344	122	24	15.1	2.9	20.9	52.1	81.4	91.1	84.8	64.1	28.8	
1994	2,017	4	104	444	514	455	361	114	21	15.9	4.0	25.2	53.2	78.7	100.0	83.1	58.3	29.9	
1993	1,876	9	91	402	505	442	305	101	21	15.5	3.7	24.3	55.7	78.8	88.9	76.3	60.3	29.1	
1992	1,791	6	83	400	470	420	289	104	18	15.6	3.5	25.8	55.2	77.1	89.0	80.8	53.9	29.2	
1991	1,739	5	106	409	430	446	249	82	11	15.8	4.7	28.0	54.1	84.3	80.6	65.2	34.5	28.7	
White, non-Hispanic, male																			
2009	14,819	10	161	1,054	4,140	4,902	2,617	1,543	392	15.1	1.3	8.1	26.4	37.4	33.2	34.1	26.4	12.5	
2008	14,774	19	164	1,132	4,157	4,606	2,656	1,612	427	15.1	1.4	8.4	26.5	36.2	34.9	35.6	29.9	12.7	
2007	14,260	12	148	1,131	4,132	4,316	2,482	1,640	397	14.6	1.3	8.1	26.4	34.8	34.1	36.2	28.9	12.4	
2006	13,438	12	119	1,096	4,006	3,852	2,389	1,590	373	13.7	1.0	7.7	25.7	32.0	33.6	35.1	28.4	11.9	
2005	13,321	12	102	1,203	3,855	3,792	2,379	1,587	391	13.7	0.9	8.3	25.0	32.7	34.0	35.2	31.2	12.0	
2004	13,151	13	137	1,289	3,832	3,422	2,489	1,619	350	13.5	1.1	8.7	25.2	30.7	35.9	36.2	29.2	12.1	
2003	13,474	9	141	1,407	3,961	3,324	2,657	1,615	357	13.9	1.2	9.3	26.4	31.1	38.6	36.4	30.7	12.6	
2002	13,032	25	144	1,419	3,740	3,129	2,522	1,698	353	13.4	1.2	9.2	25.2	30.6	36.8	38.8	31.4	12.4	
2001	12,767	13	155	1,441	3,687	2,905	2,620	1,572	371	13.2	1.2	9.1	25.0	30.3	38.1	36.5	33.9	12.3	
2000	12,807	14	151	1,571	3,527	2,956	2,617	1,607	363	13.3	1.2	9.8	24.6	31.6	38.0	37.8	33.9	12.6	
1999	12,818	14	164	1,532	3,418	2,920	2,772	1,654	342	13.3	1.2	9.4	24.6	31.9	40.1	39.5	33.0	12.8	
1998	11,986	20	183	1,547	2,946	2,653	2,698	1,603	334	12.5	1.3	9.5	21.9	29.9	38.6	39.1	33.6	12.1	
1997	12,052	13	202	1,669	2,863	2,627	2,818	1,559	299	12.6	1.4	10.3	21.8	30.9	40.0	38.7	31.4	12.4	
1996	11,675	16	216	1,667	2,669	2,619	2,694	1,512	282	12.5	1.5	10.6	21.4	32.0	38.6	39.4	31.3	12.4	
1995	11,848	20	250	1,714	2,566	2,554	2,928	1,517	296	12.7	1.7	11.0	21.4	31.6	41.8	40.9	34.1	12.8	
1994	11,780	16	280	1,671	2,312	2,791	2,958	1,482	266	12.7	1.9	10.9	20.0	34.6	42.4	41.0	31.8	12.9	
1993	11,610	23	277	1,649	2,196	2,735	2,932	1,510	283	12.6	1.9	10.9	19.8	34.0	42.2	42.9	35.0	12.9	
1992	11,793	18	278	1,645	2,102	2,903	3,027	1,530	289	12.9	1.8	11.0	19.8	36.0	44.1	44.5	37.2	13.4	
1991	11,707	17	297	1,535	2,027	2,997	3,001	1,563	265	12.9	1.9	10.4	20.4	37.0	44.1	46.8	35.3	13.5	

Table 2. Age-specific number of deaths, age-specific death rates, and age-adjusted death rates¹ from all liver cirrhosis by race, Hispanic origin, and sex, United States, 1970–2009. (Continued)

Race, Hispanic origin, ² sex, and year	Number of deaths, by age group									Deaths per 100,000 population, by age group								Age-adjusted deaths per 100,000 population
	All ³	0–24	25–34	35–44	45–54	55–64	65–74	75–84	85+	All	25–34	35–44	45–54	55–64	65–74	75–84	85+	
Black, male																		
2009	1,692	5	28	116	544	658	243	80	18	8.5	1.0	4.4	20.4	37.5	28.1	20.6	17.0	9.9
2008	1,705	4	27	122	566	628	256	85	17	8.7	1.0	4.5	21.6	37.8	30.6	22.2	16.9	10.4
2007	1,708	10	14	129	568	611	274	91	11	8.8	0.5	4.8	22.3	38.6	34.0	24.2	11.5	10.8
2006	1,545	5	11	161	550	487	222	92	17	8.1	0.4	6.0	22.2	32.3	28.3	24.9	18.5	10.1
2005	1,685	8	14	148	613	545	232	107	17	9.0	0.5	5.5	25.4	38.3	30.3	29.3	19.2	11.4
2004	1,700	8	16	206	627	509	246	74	14	9.2	0.6	7.6	26.9	38.0	33.0	20.6	16.5	11.7
2003	1,761	4	26	199	688	512	238	73	21	9.7	1.0	7.3	30.5	40.5	32.6	20.6	25.2	12.5
2002	1,658	3	29	189	659	450	233	80	15	9.2	1.1	6.9	30.3	37.6	32.6	23.0	18.0	12.1
2001	1,879	4	29	281	726	479	272	76	11	10.6	1.1	10.3	34.8	42.3	38.8	22.3	13.0	14.0
2000	1,775	9	30	300	651	422	263	82	17	10.2	1.2	11.1	32.9	38.4	38.3	24.6	19.6	13.7
1999	1,896	6	30	314	679	471	281	96	18	11.0	1.2	11.7	36.3	44.4	41.3	29.5	21.1	15.2
1998	1,817	4	35	313	624	462	284	79	14	10.7	1.3	11.9	35.3	45.0	42.1	24.7	16.7	15.0
1997	1,827	5	36	304	636	475	273	83	15	11.0	1.4	11.8	37.8	47.8	40.8	26.4	18.5	15.6
1996	1,931	1	43	418	624	455	291	85	12	11.8	1.6	16.7	39.2	47.2	43.7	27.7	15.1	16.7
1995	2,008	13	52	440	631	477	295	75	23	12.5	2.0	18.1	41.9	50.4	44.7	25.1	29.5	17.9
1994	2,102	10	73	456	670	461	325	87	20	13.3	2.8	19.3	47.0	49.7	49.7	29.8	26.6	19.3
1993	2,113	12	87	539	583	467	325	86	10	13.7	3.3	23.7	43.2	51.1	50.2	30.0	13.6	19.5
1992	2,197	10	97	529	587	504	358	93	18	14.5	3.7	24.1	45.7	56.1	56.3	32.9	25.2	21.1
1991	2,148	13	108	533	569	522	308	79	11	14.5	4.1	25.4	46.9	58.7	49.2	28.2	15.9	20.9
1990	2,400	5	138	603	641	587	305	100	17	16.5	5.3	30.3	54.2	66.6	49.5	36.0	25.5	24.1
1989	2,524	15	176	664	634	585	340	93	14	17.7	6.8	35.3	54.8	66.4	55.8	33.8	21.1	25.5
1988	2,485	15	194	642	654	578	299	92	10	17.7	7.6	35.9	57.8	65.3	49.7	33.9	15.3	25.5
1987	2,584	11	222	684	676	589	289	95	14	18.6	8.9	40.0	61.1	66.4	48.5	35.6	21.8	26.9
1986	2,416	14	249	608	584	548	305	92	12	17.6	10.2	37.3	53.9	61.7	51.7	35.1	19.1	25.5
1985	2,636	15	249	648	662	642	326	77	14	19.5	10.4	42.0	61.9	72.3	55.7	30.0	22.6	28.3
1984	2,468	19	242	565	638	595	310	86	10	18.5	10.4	38.4	60.4	67.3	53.3	34.2	16.4	27.1
1983	2,440	15	240	547	649	612	309	63	4	18.5	10.6	39.1	62.1	69.6	53.4	25.6	6.7	27.1
1982	2,420	23	249	535	674	592	269	72	6	18.6	11.4	40.0	65.1	67.9	46.7	29.9	10.4	27.5
1981	2,746	20	264	621	794	628	335	76	6	21.4	12.5	48.7	77.0	72.7	58.6	32.3	10.8	31.9
1980	3,031	25	311	683	889	708	332	65	12	24.0	15.6	54.8	86.6	82.6	58.4	28.3	22.3	35.5
1979	2,964	25	292	648	909	685	329	60	14	24.1	15.8	54.8	89.5	80.8	58.4	26.8	27.1	35.8
1978	2,944	26	301	674	843	702	321	59	16	24.3	17.0	58.3	83.1	84.1	58.2	27.0	32.2	36.0
1977	3,140	30	315	675	1,000	747	293	71	6	26.2	18.6	59.6	98.6	90.8	54.1	33.4	12.5	38.9
1976	3,142	36	310	720	977	755	290	46	6	26.6	19.2	64.7	96.0	93.0	54.7	22.2	13.1	39.2

Table 2. Age-specific number of deaths, age-specific death rates, and age-adjusted death rates¹ from all liver cirrhosis by race, Hispanic origin, and sex, United States, 1970–2009. (Continued)

Race, Hispanic origin, ² sex, and year	Number of deaths, by age group									Deaths per 100,000 population, by age group								Age-adjusted deaths per 100,000 population
	All ³	0–24	25–34	35–44	45–54	55–64	65–74	75–84	85+	All	25–34	35–44	45–54	55–64	65–74	75–84	85+	
1975	3,084	34	331	673	957	718	299	63	9	26.4	21.5	61.4	94.1	89.9	57.5	31.2	19.9	39.1
1974	3,205	30	318	762	1,044	702	286	54	6	27.9	21.7	69.5	103.0	89.0	56.0	27.7	13.7	41.2
1973	3,120	51	297	794	965	671	266	55	17	27.5	21.3	72.7	95.1	86.2	53.2	29.4	40.6	40.8
1972 ⁴	3,180	36	302	820	1,056	610	286	58	12	28.4	22.7	75.3	105.0	79.2	58.6	32.0	29.4	42.3
1971	2,757	43	275	729	866	542	238	55	8	25.0	21.7	67.2	86.8	71.4	50.1	31.4	20.1	37.1
1970	2,771	31	304	756	855	557	219	43	5	25.6	24.6	69.6	86.8	74.8	47.4	25.4	12.9	37.5
Black, Hispanic, ⁵ male																		
2009	14	—	—	1	5	4	4	—	—	1.1	—	0.7	4.4	6.6	14.4	—	—	2.2
2008	22	—	1	3	9	5	4	—	—	1.9	0.5	2.1	8.5	8.9	15.4	—	—	3.3
2007	15	—	—	2	8	4	1	—	—	1.4	—	1.4	8.0	7.6	4.1	—	—	2.3
2006	22	—	—	2	10	4	5	1	—	2.1	—	1.5	10.7	8.3	21.7	10.4	—	4.3
2005	14	—	—	1	3	5	3	1	1	1.4	—	0.8	3.4	11.2	13.8	11.1	46.6	3.7
2004	11	—	—	2	6	2	—	1	—	1.2	—	1.6	7.3	4.9	—	11.9	—	2.2
2003	13	—	—	2	2	4	2	3	—	1.5	—	1.7	2.6	10.6	10.4	38.5	—	4.0
2002	16	—	—	2	3	5	4	2	—	1.9	—	1.8	4.2	14.3	22.1	27.3	—	4.8
2001	11	—	1	1	4	3	1	1	—	1.4	0.8	1.0	6.0	9.3	5.9	14.7	—	2.9
2000	13	—	2	3	2	4	2	—	—	1.7	1.6	3.0	3.2	13.4	12.6	—	—	3.1
1999	13	—	1	2	5	3	2	—	—	1.8	0.8	2.1	8.8	10.8	13.7	—	—	3.5
1998	12	—	—	4	4	4	—	—	—	1.7	—	4.2	7.3	14.5	—	—	—	2.9
1997	17	—	—	2	4	4	5	2	—	2.5	—	2.1	7.5	14.7	34.4	38.5	—	6.6
1996	16	—	—	3	5	4	1	3	—	2.4	—	3.2	9.7	14.9	6.9	58.5	—	6.2
1995	7	—	—	2	2	2	—	1	—	1.1	—	2.2	4.0	7.5	—	20.1	—	2.4
1994	15	—	—	5	7	3	—	—	—	2.3	—	5.4	14.5	11.3	—	—	—	3.8
1993	16	—	—	6	4	3	2	1	—	2.5	—	6.7	8.5	11.5	14.7	21.1	—	5.1
1992	17	—	—	3	6	3	4	—	1	2.7	—	3.4	13.2	11.6	29.9	—	102.0	6.9
1991	18	—	—	4	5	4	5	—	—	2.9	—	4.6	11.4	15.4	38.3	—	—	6.2
Black, non-Hispanic, male																		
2009	1,667	5	28	114	535	649	238	80	18	8.9	1.1	4.6	20.9	38.3	28.5	21.2	17.5	10.2
2008	1,676	4	26	118	554	620	252	85	17	9.1	1.0	4.7	22.1	38.6	31.1	22.9	17.3	10.6
2007	1,687	10	14	126	559	603	273	91	11	9.3	0.6	4.9	22.8	39.4	34.9	24.9	11.8	11.0
2006	1,511	5	11	157	538	478	216	89	17	8.4	0.5	6.1	22.5	32.8	28.3	24.7	19.0	10.3
2005	1,662	8	14	145	609	537	226	106	16	9.4	0.6	5.7	26.2	39.0	30.4	29.7	18.5	11.6
2004	1,680	8	16	204	617	505	244	72	14	9.6	0.7	7.9	27.4	38.9	33.6	20.6	16.9	11.9

Table 2. Age-specific number of deaths, age-specific death rates, and age-adjusted death rates¹ from all liver cirrhosis by race, Hispanic origin, and sex, United States, 1970–2009. (Continued)

Race, Hispanic origin, ² sex, and year	Number of deaths, by age group									Deaths per 100,000 population, by age group								Age-adjusted deaths per 100,000 population
	All ³	0–24	25–34	35–44	45–54	55–64	65–74	75–84	85+	All	25–34	35–44	45–54	55–64	65–74	75–84	85+	
2003	1,730	4	26	196	678	501	234	70	21	10.0	1.1	7.6	31.2	40.9	32.9	20.2	25.8	12.6
2002	1,628	3	28	186	651	441	227	77	15	9.5	1.2	7.1	31.0	38.0	32.6	22.6	18.4	12.3
2001	1,855	3	28	280	715	472	270	75	11	10.9	1.2	10.7	35.4	42.9	39.5	22.5	13.3	14.2
2000	1,753	9	28	295	645	416	260	82	17	10.5	1.1	11.3	33.6	38.9	38.7	25.1	20.0	14.0
1999	1,866	6	29	311	665	464	277	96	17	11.3	1.2	12.0	36.6	44.9	41.6	30.0	20.2	15.4
1998	1,783	4	35	304	612	452	282	79	14	11.0	1.4	12.0	35.7	45.3	42.7	25.1	17.0	15.1
1997	1,798	5	36	301	628	466	268	79	15	11.3	1.4	12.2	38.6	48.3	40.9	25.6	18.7	15.8
1996	1,899	1	43	415	611	447	287	82	11	12.2	1.7	17.4	39.9	48.1	44.4	27.4	14.1	17.0
1995	1,972	12	51	429	623	468	291	74	23	12.9	2.1	18.5	43.1	51.3	45.4	25.4	30.2	18.2
1994	2,056	10	72	445	655	450	319	86	19	13.7	2.9	19.8	47.9	50.3	50.2	30.2	25.9	19.6
1993	2,055	12	87	524	571	449	317	83	9	14.0	3.5	24.1	44.2	51.0	50.4	29.7	12.6	19.7
1992	2,135	10	96	514	568	491	347	92	16	14.8	3.9	24.6	46.2	56.7	56.1	33.3	23.0	21.3
1991	2,075	13	103	516	550	506	294	78	11	14.7	4.2	25.8	47.3	59.0	48.3	28.6	16.4	21.1
White, female																		
2009	9,860	11	126	723	2,270	2,413	1,981	1,688	647	8.0	0.8	4.5	12.4	15.9	20.5	25.5	19.9	6.7
2008	9,430	15	106	742	2,129	2,163	1,953	1,712	610	7.7	0.7	4.5	11.7	14.7	20.9	25.5	19.2	6.5
2007	9,088	21	101	734	2,072	2,033	1,846	1,682	599	7.5	0.7	4.4	11.5	14.2	20.5	24.9	19.3	6.4
2006	8,752	14	90	753	1,900	1,883	1,782	1,770	559	7.2	0.6	4.4	10.6	13.6	20.2	25.9	18.5	6.2
2005	8,637	19	92	787	1,765	1,799	1,891	1,763	521	7.2	0.6	4.5	10.0	13.5	21.7	25.7	17.8	6.2
2004	8,452	23	75	746	1,785	1,723	1,845	1,726	528	7.1	0.5	4.3	10.3	13.5	21.3	25.1	18.4	6.2
2003	8,596	6	93	835	1,629	1,666	1,967	1,873	527	7.2	0.6	4.7	9.6	13.6	22.8	27.3	18.6	6.4
2002	8,733	21	105	920	1,578	1,620	2,005	1,922	562	7.4	0.7	5.1	9.4	13.8	23.3	28.1	20.2	6.5
2001	8,543	10	106	954	1,605	1,518	1,961	1,848	541	7.3	0.7	5.2	9.7	13.7	22.6	27.2	19.6	6.5
2000	8,165	15	99	853	1,355	1,497	1,956	1,853	537	7.0	0.6	4.6	8.5	13.9	22.4	27.5	19.6	6.2
1999	8,016	15	119	803	1,252	1,419	1,985	1,889	534	6.9	0.8	4.4	8.1	13.5	22.5	28.3	19.9	6.2
1998	7,710	9	132	792	1,124	1,317	2,078	1,775	483	6.7	0.8	4.3	7.5	12.9	23.2	27.0	18.4	6.0
1997	7,668	13	125	803	1,103	1,337	2,119	1,644	524	6.7	0.8	4.4	7.5	13.6	23.4	25.3	20.5	6.0
1996	7,469	16	165	726	1,102	1,347	2,040	1,622	448	6.6	1.0	4.0	7.8	14.0	22.2	25.5	18.0	6.0
1995	7,377	11	136	742	1,040	1,368	2,024	1,602	454	6.6	0.8	4.2	7.7	14.3	21.9	25.7	18.7	6.0
1994	7,498	21	158	719	1,057	1,402	2,147	1,538	456	6.7	0.9	4.1	8.1	14.7	23.2	25.1	19.4	6.2
1993	7,571	21	168	698	957	1,532	2,172	1,628	393	6.9	1.0	4.1	7.6	16.1	23.5	26.9	17.2	6.3
1992	7,427	23	174	628	958	1,486	2,187	1,542	429	6.8	1.0	3.8	8.0	15.6	23.8	25.9	19.5	6.2
1991	7,646	18	198	646	949	1,616	2,241	1,567	409	7.1	1.1	3.9	8.4	16.8	24.5	26.8	19.3	6.5
1990	7,621	26	203	619	930	1,671	2,245	1,538	387	7.1	1.1	3.9	8.5	17.3	24.7	26.9	19.1	6.6

Table 2. Age-specific number of deaths, age-specific death rates, and age-adjusted death rates¹ from all liver cirrhosis by race, Hispanic origin, and sex, United States, 1970–2009. (Continued)

Race, Hispanic origin, ² sex, and year	Number of deaths, by age group									Deaths per 100,000 population, by age group								Age-adjusted deaths per 100,000 population	
	All ³	0–24	25–34	35–44	45–54	55–64	65–74	75–84	85+	All	25–34	35–44	45–54	55–64	65–74	75–84	85+		
1989	7,835	23	185	566	1,006	1,857	2,291	1,520	387	7.4	1.0	3.7	9.3	19.0	25.6	27.1	19.7	6.9	
1988	7,600	27	207	616	998	1,915	2,142	1,401	294	7.2	1.2	4.1	9.5	19.2	24.2	25.6	15.4	6.8	
1987	7,642	24	223	606	988	1,918	2,195	1,374	314	7.3	1.3	4.1	9.8	19.0	25.0	25.6	16.9	6.9	
1986	7,869	33	213	593	1,081	2,108	2,253	1,284	303	7.6	1.2	4.2	10.9	20.5	26.0	24.5	16.8	7.2	
1985	7,922	30	225	574	1,188	2,103	2,217	1,286	299	7.7	1.3	4.2	12.0	20.3	26.0	25.2	17.0	7.4	
1984	8,169	32	185	574	1,322	2,245	2,290	1,266	255	8.0	1.1	4.3	13.3	21.5	27.1	25.4	15.0	7.7	
1983	8,146	36	204	572	1,378	2,386	2,126	1,179	263	8.0	1.2	4.5	13.9	22.9	25.5	24.3	16.0	7.8	
1982	8,210	38	192	593	1,389	2,435	2,183	1,160	220	8.1	1.2	4.9	13.9	23.4	26.6	24.6	13.9	8.0	
1981	8,648	50	178	652	1,668	2,554	2,254	1,044	244	8.6	1.1	5.7	16.5	24.6	27.8	22.7	16.0	8.6	
1980	8,876	41	204	734	1,812	2,615	2,227	1,017	224	8.9	1.3	6.5	17.7	25.3	27.9	22.7	15.3	9.0	
1979	8,574	49	181	727	1,882	2,581	2,058	895	200	8.6	1.2	6.6	18.1	25.3	26.3	20.5	14.4	8.8	
1978	8,464	48	188	743	2,022	2,558	1,871	844	188	8.6	1.2	6.9	19.2	25.5	24.4	19.8	14.2	8.9	
1977	8,721	46	185	782	2,065	2,616	2,063	791	168	9.0	1.3	7.6	19.4	26.6	27.5	19.0	13.4	9.2	
1976	8,833	40	186	829	2,202	2,736	1,876	797	167	9.2	1.3	8.2	20.4	28.2	25.6	19.6	14.2	9.5	
1975	8,871	72	170	801	2,350	2,844	1,765	730	137	9.3	1.2	8.0	21.5	29.8	24.7	18.2	11.9	9.7	
1974	9,421	62	223	996	2,511	2,923	1,839	717	150	9.9	1.7	9.9	22.9	31.1	26.4	18.3	13.8	10.5	
1973	9,444	69	195	1,023	2,632	2,919	1,755	708	143	10.0	1.5	10.1	24.0	31.4	25.8	18.6	14.1	10.6	
1972 ⁴	9,174	68	194	1,044	2,578	2,750	1,670	744	124	9.8	1.6	10.3	23.6	29.9	25.1	20.2	12.9	10.5	
1971	9,218	101	192	1,089	2,619	2,704	1,646	728	139	10.0	1.7	10.6	24.1	29.8	25.2	20.4	15.3	10.7	
1970	9,075	102	172	1,121	2,658	2,624	1,532	728	137	9.9	1.5	10.8	24.6	29.4	23.9	21.1	16.1	10.7	
White, Hispanic, female																			
2009	1,368	5	25	96	260	331	296	270	85	6.3	0.7	3.0	10.9	22.5	36.2	58.6	54.4	9.9	
2008	1,265	1	19	111	249	255	305	259	66	6.0	0.6	3.6	10.9	18.4	39.2	58.2	45.1	9.6	
2007	1,133	3	20	81	236	244	262	230	57	5.5	0.6	2.7	10.8	18.6	35.3	53.8	41.4	9.0	
2006	1,074	2	22	92	222	211	241	227	57	5.4	0.7	3.2	10.7	17.0	33.8	55.2	44.1	8.9	
2005	1,003	6	17	100	185	215	247	183	50	5.2	0.5	3.6	9.4	18.5	36.0	46.6	41.1	8.7	
2004	1,015	8	12	90	170	219	267	216	33	5.5	0.4	3.3	9.1	20.1	40.3	58.0	29.0	9.3	
2003	1,012	1	23	92	161	187	298	211	39	5.7	0.7	3.5	9.1	18.2	46.6	60.0	35.8	9.8	
2002	977	8	21	97	176	199	257	165	54	5.7	0.7	3.9	10.5	20.6	41.6	49.8	51.9	9.8	
2001	902	4	16	106	168	173	233	164	38	5.4	0.6	4.4	10.6	19.1	39.1	52.6	37.8	9.4	
2000	873	4	11	100	147	171	236	161	43	5.5	0.4	4.3	9.8	19.8	41.1	55.1	44.4	9.7	
1999	838	4	19	99	144	157	223	150	42	5.5	0.7	4.5	10.3	19.2	40.5	54.7	45.7	9.7	
1998	743	3	24	72	118	155	197	138	36	5.1	0.9	3.4	9.0	20.0	37.1	52.7	41.0	9.1	
1997	780	5	15	93	128	158	218	124	39	5.6	0.6	4.7	10.4	21.5	42.5	49.4	46.9	9.9	
1996	716	7	22	82	127	137	193	106	42	5.4	0.9	4.4	11.0	19.6	39.0	44.2	52.9	9.4	

Table 2. Age-specific number of deaths, age-specific death rates, and age-adjusted death rates¹ from all liver cirrhosis by race, Hispanic origin, and sex, United States, 1970–2009. (Continued)

Race, Hispanic origin, ² sex, and year	Number of deaths, by age group									Deaths per 100,000 population, by age group							Age-adjusted deaths per 100,000 population	
	All ³	0–24	25–34	35–44	45–54	55–64	65–74	75–84	85+	All	25–34	35–44	45–54	55–64	65–74	75–84		85+
1995	669	3	12	82	103	153	169	109	38	5.3	0.5	4.6	9.6	22.7	35.5	47.5	50.6	9.4
1994	693	1	15	74	120	163	201	95	24	5.7	0.7	4.4	11.9	25.0	44.2	42.9	33.6	10.0
1993	652	8	16	72	101	158	163	108	26	5.6	0.7	4.5	10.6	24.9	37.5	50.4	38.3	9.8
1992	643	2	18	49	121	147	182	100	24	5.8	0.9	3.3	13.5	23.9	44.0	48.0	37.7	10.2
1991	650	4	17	76	95	179	174	85	19	6.2	0.9	5.4	11.3	29.8	44.0	41.9	31.6	10.4
White, non-Hispanic, female																		
2009	8,480	6	100	626	2,007	2,079	1,684	1,415	562	8.3	0.8	4.8	12.6	15.2	19.1	23.0	18.1	6.5
2008	8,153	14	87	628	1,877	1,905	1,646	1,452	544	8.0	0.7	4.7	11.8	14.3	19.2	23.2	18.0	6.3
2007	7,951	18	81	653	1,836	1,788	1,583	1,450	542	7.8	0.7	4.7	11.5	13.8	19.2	22.9	18.3	6.2
2006	7,664	12	68	659	1,672	1,666	1,541	1,543	502	7.6	0.6	4.6	10.6	13.2	19.0	24.1	17.4	6.0
2005	7,617	13	74	684	1,575	1,582	1,642	1,576	471	7.5	0.6	4.7	10.1	13.0	20.5	24.4	16.8	6.1
2004	7,417	15	63	654	1,604	1,500	1,576	1,509	495	7.3	0.5	4.4	10.4	12.8	19.7	23.2	18.0	6.0
2003	7,567	5	70	740	1,465	1,474	1,667	1,658	488	7.5	0.6	4.9	9.6	13.1	20.9	25.5	17.9	6.1
2002	7,734	13	84	820	1,396	1,416	1,742	1,755	508	7.7	0.7	5.3	9.3	13.1	21.8	27.0	18.9	6.3
2001	7,620	6	90	843	1,434	1,343	1,723	1,679	502	7.6	0.7	5.3	9.6	13.2	21.3	25.9	18.8	6.3
2000	7,269	11	87	751	1,202	1,322	1,715	1,688	493	7.2	0.7	4.7	8.3	13.3	21.0	26.2	18.6	6.0
1999	7,158	11	100	700	1,104	1,259	1,760	1,735	489	7.1	0.8	4.3	7.8	13.0	21.3	27.2	18.8	5.9
1998	6,950	6	108	718	1,004	1,160	1,875	1,634	445	6.9	0.8	4.4	7.3	12.3	22.3	25.9	17.6	5.8
1997	6,855	8	110	703	968	1,175	1,891	1,517	483	6.8	0.8	4.3	7.2	12.9	22.1	24.3	19.6	5.8
1996	6,613	9	143	633	952	1,188	1,808	1,483	396	6.8	1.0	4.0	7.5	13.6	21.2	24.6	16.8	5.8
1995	6,556	8	120	646	914	1,185	1,815	1,461	407	6.7	0.8	4.1	7.5	13.6	21.1	24.8	17.7	5.8
1994	6,649	20	138	633	917	1,211	1,903	1,408	419	6.8	0.9	4.1	7.8	13.9	22.0	24.3	18.8	5.9
1993	6,728	12	150	613	833	1,322	1,950	1,489	358	7.0	1.0	4.0	7.3	15.2	22.5	26.0	16.5	6.0
1992	6,552	20	150	557	804	1,290	1,947	1,394	390	6.8	1.0	3.7	7.4	14.8	22.6	24.8	18.7	5.9
1991	6,802	11	176	551	831	1,404	2,007	1,441	381	7.1	1.1	3.7	8.1	15.9	23.4	26.0	18.9	6.3
Black, female																		
2009	931	1	17	78	281	305	138	93	18	4.3	0.6	2.6	9.3	14.5	11.8	13.9	6.6	4.5
2008	850	3	13	82	289	242	136	59	26	4.0	0.4	2.7	9.7	12.1	12.0	8.9	9.9	4.2
2007	906	6	16	83	300	267	136	68	30	4.3	0.5	2.7	10.3	13.9	12.4	10.4	11.8	4.6
2006	858	7	14	107	270	238	122	76	24	4.1	0.5	3.5	9.5	13.1	11.4	11.7	9.7	4.5
2005	893	2	20	99	295	229	129	89	30	4.3	0.7	3.3	10.7	13.3	12.3	13.8	12.5	4.9
2004	890	7	9	120	295	229	132	69	29	4.4	0.3	3.9	11.0	14.0	12.9	10.9	12.5	5.0
2003	929	4	19	150	284	212	169	70	21	4.6	0.7	4.9	10.9	13.7	16.7	11.2	9.1	5.3
2002	989	5	26	142	331	217	140	101	27	5.0	0.9	4.6	13.2	14.8	14.0	16.4	11.8	5.8

Table 2. Age-specific number of deaths, age-specific death rates, and age-adjusted death rates¹ from all liver cirrhosis by race, Hispanic origin, and sex, United States, 1970–2009. (Continued)

Race, Hispanic origin, ² sex, and year	Number of deaths, by age group									Deaths per 100,000 population, by age group							Age-adjusted deaths per 100,000 population	
	All ³	0–24	25–34	35–44	45–54	55–64	65–74	75–84	85+	All	25–34	35–44	45–54	55–64	65–74	75–84		85+
2001	962	9	21	161	312	189	148	99	23	4.9	0.7	5.2	12.9	13.5	15.0	16.4	10.0	5.8
2000	1,034	7	31	172	308	224	179	86	27	5.4	1.1	5.6	13.4	16.5	18.4	14.5	11.6	6.4
1999	1,023	9	27	170	270	247	161	102	37	5.6	1.0	5.7	12.6	18.6	16.6	18.4	16.7	6.6
1998	900	6	25	177	251	185	151	87	18	5.0	0.9	6.0	12.3	14.3	15.6	15.8	8.4	5.9
1997	1,007	10	31	189	264	223	183	85	22	5.6	1.1	6.5	13.5	17.8	19.1	15.6	10.6	6.8
1996	1,031	3	31	220	255	227	204	63	28	5.8	1.1	7.8	13.7	18.6	21.4	11.7	13.8	7.0
1995	1,079	9	42	214	262	251	174	103	24	6.2	1.5	7.7	14.8	20.9	18.4	19.5	12.2	7.6
1994	1,157	7	60	238	278	245	216	83	30	6.7	2.1	8.8	16.5	20.7	23.1	15.9	15.8	8.3
1993	1,133	11	60	261	253	232	197	99	20	6.7	2.1	10.0	15.8	19.9	21.3	19.2	10.9	8.3
1992	1,140	6	66	239	246	255	221	85	22	6.8	2.3	9.5	16.1	22.1	24.2	16.7	12.5	8.5
1991	1,336	8	100	310	285	261	258	91	21	8.1	3.4	12.8	19.6	22.8	28.6	18.1	12.5	10.1
1990	1,363	13	100	317	277	321	212	104	18	8.4	3.4	13.7	19.5	28.2	23.9	20.9	11.3	10.5
1989	1,337	15	101	279	282	333	231	78	17	8.4	3.5	12.7	20.2	29.4	26.4	16.1	11.1	10.5
1988	1,431	8	114	318	313	322	231	106	18	9.1	4.0	15.2	22.9	28.4	26.7	22.4	12.1	11.6
1987	1,345	14	144	316	298	291	198	73	10	8.7	5.1	15.7	22.3	25.7	23.2	15.9	7.0	10.9
1986	1,347	14	153	283	306	311	210	66	4	8.8	5.5	14.7	23.3	27.6	24.9	14.8	2.9	11.1
1985	1,446	7	172	290	328	320	221	93	13	9.6	6.3	15.9	25.3	28.5	26.5	21.6	9.8	12.2
1984	1,446	18	168	277	308	374	210	80	10	9.7	6.4	15.8	24.0	33.6	25.5	19.2	7.8	12.4
1983	1,460	22	172	294	345	366	192	60	9	9.9	6.7	17.6	27.1	33.2	23.6	14.9	7.3	12.8
1982	1,441	27	169	292	356	325	200	58	13	9.9	6.8	18.2	28.2	29.8	24.9	14.9	11.0	12.9
1981	1,616	21	171	333	420	380	223	56	12	11.3	7.1	21.7	33.3	35.3	28.1	14.9	10.7	14.9
1980	1,776	36	191	371	487	419	211	54	7	12.6	8.3	24.7	38.7	39.4	27.0	14.8	6.5	16.5
1979	1,619	14	164	356	468	357	200	55	5	11.8	7.6	24.7	37.5	34.1	26.1	15.7	4.9	15.7
1978	1,701	24	174	372	522	378	186	40	4	12.6	8.4	26.5	42.1	36.8	25.0	11.8	4.1	16.7
1977	1,762	37	181	396	545	377	166	52	8	13.2	9.2	28.8	44.2	37.4	23.0	16.0	8.7	17.7
1976	1,734	30	167	428	532	358	170	40	6	13.2	8.8	31.7	43.3	36.2	24.2	12.9	6.9	17.8
1975	1,725	30	169	423	524	372	164	30	12	13.3	9.4	31.8	43.0	38.5	24.2	9.9	14.1	18.0
1974	1,885	35	203	472	603	390	146	30	5	14.8	11.8	35.7	49.9	41.0	22.1	10.4	6.2	19.9
1973	1,937	31	195	504	629	379	158	38	1	15.5	11.9	38.3	52.5	40.6	24.8	13.9	1.3	20.9
1972 ⁴	1,830	40	240	530	538	308	144	24	4	14.8	15.3	40.4	45.5	33.5	23.2	9.3	5.6	20.0
1971	1,713	35	181	504	545	296	117	28	7	14.1	12.0	38.5	46.8	32.9	19.4	11.4	10.4	19.2
1970	1,766	39	216	550	504	303	118	33	2	14.8	14.7	42.0	44.1	34.6	20.2	14.3	3.2	20.0
Black, Hispanic, ⁵ female 2009	11	—	—	—	1	3	—	7	—	0.9	—	—	0.8	4.2	—	37.0	—	2.1

Table 2. Age-specific number of deaths, age-specific death rates, and age-adjusted death rates¹ from all liver cirrhosis by race, Hispanic origin, and sex, United States, 1970–2009. (Continued)

Race, Hispanic origin, ² sex, and year	Number of deaths, by age group									Deaths per 100,000 population, by age group								Age-adjusted deaths per 100,000 population
	All ³	0–24	25–34	35–44	45–54	55–64	65–74	75–84	85+	All	25–34	35–44	45–54	55–64	65–74	75–84	85+	
2008	12	1	—	2	6	1	2	—	—	1.0	—	1.2	5.1	1.5	5.8	—	—	1.5
2007	9	—	2	—	2	1	3	1	—	0.8	1.0	—	1.8	1.6	9.3	5.9	—	1.4
2006	5	—	—	1	—	1	1	2	—	0.5	—	0.7	—	1.8	3.3	12.4	—	1.0
2005	11	—	—	2	4	2	—	2	1	1.1	—	1.4	4.1	3.8	—	13.1	20.2	2.0
2004	5	—	—	1	1	1	1	—	1	0.5	—	0.7	1.1	2.1	3.6	—	22.0	1.0
2003	6	—	—	—	1	2	1	2	—	0.7	—	—	1.2	4.5	3.8	14.7	—	1.5
2002	9	—	1	2	3	1	1	1	—	1.0	0.6	1.7	3.8	2.4	4.0	7.9	—	1.7
2001	6	—	—	1	3	—	1	1	—	0.7	—	0.9	4.0	—	4.2	8.4	—	1.3
2000	8	—	—	—	1	5	1	1	—	1.0	—	—	1.5	14.0	4.5	9.0	—	2.1
1999	5	—	—	—	1	1	2	—	1	0.7	—	—	1.6	3.0	9.6	—	31.8	1.6
1998	7	—	1	—	1	1	3	—	1	1.0	0.7	—	1.6	3.0	14.4	—	33.2	2.0
1997	7	—	—	—	—	3	3	—	1	1.0	—	—	—	9.1	14.4	—	35.3	2.3
1996	5	—	—	—	1	2	—	2	—	0.7	—	—	1.7	6.1	—	21.2	—	1.7
1995	7	—	—	1	2	1	1	2	—	1.0	—	1.0	3.6	3.1	4.9	21.7	—	2.2
1994	8	—	—	1	1	2	4	—	—	1.2	—	1.1	1.9	6.2	19.8	—	—	2.3
1993	5	—	—	1	1	2	1	—	—	0.8	—	1.1	1.9	6.2	5.0	—	—	1.3
1992	3	—	—	—	1	2	—	—	—	0.5	—	—	2.0	6.2	—	—	—	0.8
1991	8	—	1	1	3	1	2	—	—	1.3	0.8	1.2	6.2	3.1	10.2	—	—	2.1
Black, non-Hispanic, female																		
2009	913	1	17	77	278	301	137	84	18	4.5	0.6	2.7	9.6	14.8	12.1	12.9	6.7	4.6
2008	834	2	13	80	281	240	134	58	26	4.1	0.5	2.8	9.9	12.4	12.2	9.0	10.1	4.3
2007	893	5	14	83	298	265	132	66	30	4.5	0.5	2.9	10.7	14.3	12.4	10.4	12.0	4.7
2006	853	7	14	106	270	237	121	74	24	4.3	0.5	3.7	9.9	13.4	11.6	11.7	10.0	4.7
2005	880	2	20	97	291	225	129	87	29	4.5	0.7	3.3	10.9	13.4	12.7	13.9	12.3	5.0
2004	881	7	9	118	292	228	131	68	28	4.6	0.3	4.0	11.3	14.4	13.1	11.0	12.3	5.1
2003	921	4	19	150	282	210	168	67	21	4.8	0.7	5.1	11.2	14.0	17.0	10.9	9.3	5.4
2002	976	5	25	140	327	215	139	99	26	5.2	0.9	4.7	13.5	15.1	14.3	16.4	11.5	5.9
2001	943	9	20	159	305	188	145	94	23	5.0	0.7	5.4	13.0	13.8	15.1	15.9	10.1	5.8
2000	1,023	7	31	172	306	219	177	84	27	5.5	1.1	5.8	13.7	16.5	18.6	14.5	11.8	6.5
1999	1,012	9	27	169	266	246	159	100	36	5.5	1.0	5.8	12.5	19.1	16.9	17.5	16.0	6.6
1998	890	5	24	177	248	184	148	87	17	5.0	0.9	6.1	12.3	14.7	15.8	15.4	7.8	5.9
1997	991	10	30	187	263	218	177	85	21	5.6	1.1	6.6	13.7	18.0	19.0	15.3	10.0	6.8
1996	1,012	3	31	218	251	221	202	58	28	5.9	1.1	8.0	13.8	18.8	22.0	10.7	13.7	7.1
1995	1,059	9	42	209	258	247	170	100	24	6.2	1.5	7.8	15.0	21.3	18.6	18.9	12.2	7.7

Table 2. Age-specific number of deaths, age-specific death rates, and age-adjusted death rates¹ from all liver cirrhosis by race, Hispanic origin, and sex, United States, 1970–2009. (Continued)

Race, Hispanic origin, ² sex, and year	Number of deaths, by age group									Deaths per 100,000 population, by age group								Age-adjusted deaths per 100,000 population
	All ³	0–24	25–34	35–44	45–54	55–64	65–74	75–84	85+	All	25–34	35–44	45–54	55–64	65–74	75–84	85+	
1994	1,137	7	60	237	272	239	211	81	30	6.8	2.2	9.1	16.7	21.0	23.3	15.6	16.0	8.4
1993	1,107	11	58	259	247	224	192	96	20	6.8	2.1	10.3	15.9	19.9	21.4	18.8	11.0	8.3
1992	1,118	6	66	234	242	248	217	84	21	7.0	2.4	9.7	16.4	22.3	24.6	16.8	12.1	8.6
1991	1,303	8	96	303	276	255	253	90	21	8.3	3.4	13.0	19.7	23.1	29.0	18.3	12.8	10.2

— No deaths in this table cell.

¹ Rates per 100,000 population computed by the direct standardization method, using the Year 2000 total population of the United States as the standard age distribution.

² Excludes deaths for which Hispanic origin was unknown and all 1991 through 1996 deaths from Oklahoma and New Hampshire where Hispanic origin was unknown in more than 90 percent of all cirrhosis deaths.

³ Includes deaths for which age of decedent was unknown; age-specific numbers of deaths may not sum to total.

⁴ Deaths based on a 50-percent sample.

⁵ Rates are not reliable due to the small number of cirrhosis deaths among Hispanic Blacks.

Table 3. Age-specific number of deaths, age-specific death rates, and age-adjusted death rates¹ from liver cirrhosis with and without mention of alcohol, United States, 1970–2009.

Liver cirrhosis subcategory and year	Number of deaths, by age group									Deaths per 100,000 population, by age group								Age-adjusted deaths per 100,000 population
	All ²	0–24	25–34	35–44	45–54	55–64	65–74	75–84	85+	All	25–34	35–44	45–54	55–64	65–74	75–84	85+	
Alcohol-related cirrhosis																		
2009	15,183	13	332	1,809	5,283	4,869	2,027	719	128	5.0	0.8	4.4	11.8	13.8	9.6	5.5	2.4	4.5
2008	14,864	18	318	1,827	5,180	4,576	2,060	759	126	4.9	0.8	4.3	11.7	13.4	10.0	5.8	2.4	4.5
2007	14,406	17	293	1,834	5,126	4,309	1,959	747	118	4.8	0.7	4.3	11.7	13.0	9.9	5.7	2.3	4.5
2006	13,050	14	245	1,732	4,562	3,823	1,783	773	117	4.4	0.6	4.0	10.5	12.0	9.3	5.9	2.4	4.1
2005	12,928	7	217	1,806	4,490	3,721	1,844	747	94	4.4	0.6	4.2	10.6	12.1	9.8	5.7	2.0	4.2
2004	12,548	11	228	1,871	4,392	3,393	1,841	709	102	4.3	0.6	4.3	10.6	11.6	9.9	5.5	2.2	4.1
2003	12,360	6	243	1,971	4,288	3,247	1,788	729	86	4.3	0.6	4.5	10.5	11.6	9.7	5.7	1.9	4.2
2002	12,121	9	242	1,971	4,137	3,083	1,849	730	98	4.2	0.6	4.4	10.3	11.5	10.1	5.7	2.2	4.2
2001	12,207	8	264	2,145	4,203	2,913	1,848	717	104	4.3	0.7	4.8	10.7	11.6	10.1	5.7	2.4	4.3
2000	12,109	8	279	2,226	3,888	2,969	1,891	751	95	4.3	0.7	4.9	10.2	12.2	10.3	6.1	2.2	4.3
1999	11,958	8	259	2,186	3,802	2,859	1,935	789	118	4.3	0.6	4.8	10.4	12.0	10.5	6.5	2.8	4.4
1998	11,798	11	332	2,217	3,462	2,805	2,127	738	104	4.3	0.8	5.0	9.8	12.2	11.5	6.1	2.6	4.4
1997	11,945	6	362	2,345	3,509	2,827	2,094	699	100	4.4	0.9	5.3	10.3	12.8	11.2	5.9	2.6	4.5
1996	12,079	5	394	2,426	3,455	2,849	2,054	784	104	4.5	0.9	5.6	10.5	13.2	10.9	6.8	2.7	4.7
1995	12,211	13	416	2,476	3,339	2,902	2,231	738	91	4.6	1.0	5.8	10.6	13.6	11.8	6.6	2.5	4.8
1994	12,241	13	499	2,449	3,146	2,921	2,383	722	103	4.7	1.2	5.9	10.4	13.8	12.7	6.6	2.9	4.9
1993	11,653	13	455	2,426	2,887	2,882	2,219	688	72	4.5	1.1	5.9	10.0	13.7	11.9	6.4	2.1	4.8
1992	11,868	12	514	2,383	2,819	3,067	2,303	672	96	4.6	1.2	6.0	10.2	14.6	12.5	6.4	2.9	4.9
1991	11,688	13	542	2,378	2,654	3,029	2,245	741	77	4.6	1.3	6.0	10.3	14.4	12.3	7.2	2.4	5.0
1990	11,985	19	580	2,381	2,700	3,198	2,320	701	76	4.8	1.3	6.3	10.7	15.2	12.8	7.0	2.5	5.2
1989	12,308	23	650	2,302	2,862	3,376	2,328	696	65	5.0	1.5	6.3	11.6	15.9	13.0	7.1	2.2	5.4
1988	11,792	17	665	2,163	2,710	3,376	2,169	630	58	4.8	1.5	6.1	11.3	15.7	12.3	6.6	2.0	5.2
1987	11,265	27	665	2,033	2,575	3,282	2,031	582	64	4.6	1.6	5.9	11.1	15.1	11.7	6.2	2.3	5.1
1986	11,060	30	708	1,866	2,482	3,188	2,174	548	58	4.6	1.7	5.7	11.0	14.5	12.7	6.0	2.1	5.0
1985	11,288	17	725	1,817	2,598	3,432	2,121	534	38	4.7	1.7	5.7	11.6	15.5	12.6	6.0	1.4	5.2
1984	11,386	25	640	1,791	2,651	3,490	2,168	566	50	4.8	1.6	5.9	11.8	15.8	13.0	6.5	1.9	5.3
1983	11,076	22	653	1,625	2,694	3,444	2,091	509	35	4.7	1.6	5.6	12.1	15.6	12.7	6.0	1.4	5.2
1982	11,293	28	653	1,669	2,830	3,497	2,110	466	36	4.9	1.7	6.0	12.6	15.9	13.1	5.7	1.5	5.4
1981	12,085	35	630	1,772	3,219	3,726	2,166	472	60	5.3	1.6	6.7	14.3	17.0	13.6	5.9	2.6	5.9
1980	12,938	36	694	1,942	3,554	3,923	2,274	453	56	5.7	1.9	7.5	15.6	18.0	14.5	5.8	2.5	6.4
1979	12,547	28	652	1,867	3,520	3,864	2,189	381	42	5.6	1.8	7.4	15.3	18.0	14.3	5.0	1.9	6.3
1978	12,828	38	613	1,873	3,705	3,957	2,138	452	47	5.8	1.8	7.7	16.0	18.8	14.3	6.1	2.3	6.5
1977	13,029	40	640	1,906	3,838	4,028	2,109	420	44	5.9	1.9	8.1	16.4	19.5	14.4	5.8	2.2	6.7

Table 3. Age-specific number of deaths, age-specific death rates, and age-adjusted death rates¹ from liver cirrhosis with and without mention of alcohol, United States, 1970–2009. (Continued)

Liver cirrhosis subcategory and year	Number of deaths, by age group									Deaths per 100,000 population, by age group								Age-adjusted deaths per 100,000 population
	All ²	0–24	25–34	35–44	45–54	55–64	65–74	75–84	85+	All	25–34	35–44	45–54	55–64	65–74	75–84	85+	
1976	13,289	37	605	2,061	3,995	4,084	2,068	402	33	6.1	1.9	8.9	16.9	20.1	14.4	5.7	1.8	7.0
1975	12,932	35	601	1,960	4,076	3,968	1,890	367	32	6.0	1.9	8.6	17.2	19.8	13.6	5.3	1.7	6.9
1974	13,151	36	608	2,049	4,235	3,962	1,867	349	41	6.2	2.0	9.0	17.8	20.1	13.7	5.1	2.4	7.1
1973	12,624	44	529	2,085	4,032	3,850	1,711	332	39	6.0	1.8	9.2	17.0	19.7	12.9	5.0	2.4	6.9
1972 ³	12,576	30	536	2,226	4,072	3,672	1,692	312	34	6.0	2.0	9.8	17.2	19.0	13.0	4.8	2.2	7.0
1971	11,892	37	517	2,072	3,826	3,563	1,504	335	35	5.7	2.0	9.1	16.3	18.7	11.8	5.3	2.4	6.6
1970	11,207	15	513	2,040	3,658	3,251	1,406	300	22	5.5	2.0	8.9	15.7	17.4	11.3	4.9	1.6	6.3
Other specified cirrhosis																		
2009	1,553	13	35	91	209	392	401	313	99	0.5	0.1	0.2	0.5	1.1	1.9	2.4	1.8	0.5
2008	1,550	20	36	120	238	327	402	305	102	0.5	0.1	0.3	0.5	1.0	2.0	2.3	2.0	0.5
2007	1,344	23	34	96	204	337	302	265	83	0.5	0.1	0.2	0.5	1.0	1.5	2.0	1.7	0.4
2006	1,254	21	35	112	233	256	286	248	63	0.4	0.1	0.3	0.5	0.8	1.5	1.9	1.3	0.4
2005	1,231	18	36	111	188	250	277	265	85	0.4	0.1	0.3	0.4	0.8	1.5	2.0	1.8	0.4
2004	1,134	37	34	122	220	208	230	231	52	0.4	0.1	0.3	0.5	0.7	1.2	1.8	1.1	0.4
2003	1,230	14	39	143	228	231	273	230	71	0.4	0.1	0.3	0.6	0.8	1.5	1.8	1.6	0.4
2002	1,596	41	64	173	259	245	347	362	105	0.6	0.2	0.4	0.7	0.9	1.9	2.8	2.4	0.6
2001	1,414	31	46	139	235	247	326	295	94	0.5	0.1	0.3	0.6	1.0	1.8	2.3	2.2	0.5
2000	1,407	20	44	160	228	192	345	332	86	0.5	0.1	0.4	0.6	0.8	1.9	2.7	2.0	0.5
1999	1,492	29	52	166	236	248	344	337	79	0.5	0.1	0.4	0.6	1.0	1.9	2.8	1.9	0.5
1998	1,216	10	50	168	216	189	245	271	67	0.4	0.1	0.4	0.6	0.8	1.3	2.3	1.7	0.4
1997	1,257	21	43	167	214	158	313	263	78	0.5	0.1	0.4	0.6	0.7	1.7	2.2	2.0	0.5
1996	1,269	22	59	193	165	185	298	269	78	0.5	0.1	0.4	0.5	0.9	1.6	2.3	2.1	0.5
1995	1,371	23	59	194	218	207	308	277	82	0.5	0.1	0.5	0.7	1.0	1.6	2.5	2.2	0.5
1994	1,391	24	78	187	221	220	331	265	65	0.5	0.2	0.4	0.7	1.0	1.8	2.4	1.8	0.5
1993	1,614	36	74	244	230	251	377	329	73	0.6	0.2	0.6	0.8	1.2	2.0	3.1	2.1	0.6
1992	1,789	30	79	249	245	282	446	357	100	0.7	0.2	0.6	0.9	1.3	2.4	3.4	3.0	0.7
1991	1,821	30	110	227	272	330	440	338	70	0.7	0.3	0.6	1.1	1.6	2.4	3.3	2.2	0.8
1990	1,811	23	119	241	250	327	459	316	73	0.7	0.3	0.6	1.0	1.5	2.5	3.1	2.4	0.8
1989	1,932	32	102	287	294	387	461	293	75	0.8	0.2	0.8	1.2	1.8	2.6	3.0	2.5	0.8
1988	2,067	35	161	316	309	410	473	295	67	0.8	0.4	0.9	1.3	1.9	2.7	3.1	2.3	0.9
1987	2,279	39	186	339	333	470	520	316	76	0.9	0.4	1.0	1.4	2.2	3.0	3.4	2.7	1.0
1986	2,179	45	193	325	303	469	499	276	68	0.9	0.5	1.0	1.3	2.1	2.9	3.0	2.5	1.0
1985	2,447	46	221	357	403	543	507	303	64	1.0	0.5	1.1	1.8	2.5	3.0	3.4	2.4	1.1
1984	2,555	54	227	383	431	574	513	313	60	1.1	0.6	1.3	1.9	2.6	3.1	3.6	2.3	1.2
1983	2,495	62	215	357	424	607	496	281	50	1.1	0.5	1.2	1.9	2.7	3.0	3.3	2.0	1.2
1982	2,669	63	226	371	507	645	511	292	53	1.2	0.6	1.3	2.3	2.9	3.2	3.6	2.2	1.3

Table 3. Age-specific number of deaths, age-specific death rates, and age-adjusted death rates¹ from liver cirrhosis with and without mention of alcohol, United States, 1970–2009. (Continued)

Liver cirrhosis subcategory and year	Number of deaths, by age group									Deaths per 100,000 population, by age group								Age-adjusted deaths per 100,000 population
	All ²	0–24	25–34	35–44	45–54	55–64	65–74	75–84	85+	All	25–34	35–44	45–54	55–64	65–74	75–84	85+	
1981	2,654	76	245	391	537	592	516	233	63	1.2	0.6	1.5	2.4	2.7	3.2	2.9	2.7	1.3
1980	3,000	79	285	452	588	714	558	249	72	1.3	0.8	1.8	2.6	3.3	3.6	3.2	3.2	1.5
1979	2,764	65	244	413	613	633	493	234	65	1.2	0.7	1.6	2.7	3.0	3.2	3.1	3.0	1.4
1978	3,641	60	252	516	839	954	676	284	55	1.6	0.7	2.1	3.6	4.5	4.5	3.8	2.7	1.9
1977	3,908	78	262	504	963	1,034	710	289	63	1.8	0.8	2.1	4.1	5.0	4.8	4.0	3.2	2.0
1976	4,092	65	237	560	1,000	1,132	700	336	58	1.9	0.7	2.4	4.2	5.6	4.9	4.8	3.1	2.2
1975	4,549	79	280	575	1,126	1,311	812	315	50	2.1	0.9	2.5	4.7	6.5	5.8	4.5	2.7	2.4
1974	5,025	80	293	735	1,315	1,311	908	333	49	2.4	1.0	3.2	5.5	6.6	6.7	4.9	2.8	2.7
1973	5,341	73	322	742	1,475	1,498	867	303	57	2.5	1.1	3.3	6.2	7.7	6.5	4.6	3.5	2.9
1972 ³	5,140	78	272	780	1,360	1,394	862	322	70	2.5	1.0	3.4	5.7	7.2	6.6	5.0	4.5	2.9
1971	5,361	101	255	845	1,396	1,434	901	354	72	2.6	1.0	3.7	5.9	7.5	7.1	5.6	4.8	3.0
1970	5,520	98	261	864	1,513	1,491	870	362	59	2.7	1.0	3.7	6.5	8.0	7.0	5.9	4.2	3.1
Unspecified Cirrhosis																		
2009	14,786	16	122	663	3,043	4,153	3,192	2,654	943	4.8	0.3	1.6	6.8	11.7	15.0	20.4	17.6	4.4
2008	14,444	16	102	712	2,988	3,824	3,146	2,710	945	4.8	0.3	1.7	6.7	11.2	15.3	20.7	18.2	4.4
2007	14,175	20	88	719	3,029	3,572	3,058	2,777	912	4.7	0.2	1.7	6.9	10.8	15.5	21.2	18.1	4.4
2006	13,889	17	68	803	3,088	3,283	2,948	2,815	864	4.7	0.2	1.9	7.1	10.3	15.4	21.5	17.8	4.4
2005	14,016	28	90	862	2,980	3,299	3,056	2,862	838	4.7	0.2	2.0	7.0	10.8	16.2	21.9	17.9	4.6
2004	13,872	17	78	913	3,018	3,067	3,121	2,843	815	4.7	0.2	2.1	7.3	10.5	16.7	21.9	17.9	4.6
2003	14,495	12	113	1,025	3,108	3,065	3,424	2,939	808	5.0	0.3	2.3	7.6	10.9	18.5	22.8	18.1	4.9
2002	14,077	15	111	1,128	2,965	2,849	3,257	2,951	799	4.9	0.3	2.5	7.4	10.7	17.7	23.1	18.3	4.9
2001	13,864	10	104	1,150	2,949	2,674	3,359	2,823	794	4.9	0.3	2.6	7.5	10.7	18.3	22.4	18.4	4.9
2000	13,489	28	119	1,099	2,664	2,675	3,308	2,783	812	4.8	0.3	2.4	7.0	11.0	18.0	22.4	19.0	4.8
1999	13,329	17	130	1,079	2,457	2,621	3,421	2,824	780	4.8	0.3	2.4	6.7	11.0	18.6	23.1	18.8	4.9
1998	12,289	23	125	995	2,089	2,307	3,297	2,725	725	4.5	0.3	2.2	5.9	10.0	17.8	22.7	18.0	4.6
1997	12,087	27	112	1,004	1,926	2,279	3,421	2,601	716	4.4	0.3	2.3	5.6	10.3	18.3	22.0	18.3	4.6
1996	11,815	23	119	1,037	1,821	2,298	3,401	2,479	635	4.4	0.3	2.4	5.6	10.6	18.1	21.5	16.7	4.5
1995	11,763	36	133	1,043	1,701	2,276	3,402	2,503	668	4.4	0.3	2.4	5.4	10.7	18.0	22.3	18.1	4.6
1994	11,888	22	160	1,075	1,694	2,416	3,470	2,400	649	4.5	0.4	2.6	5.6	11.4	18.5	21.9	18.2	4.7
1993	12,074	32	197	1,102	1,606	2,504	3,528	2,502	601	4.6	0.5	2.7	5.6	11.9	18.9	23.2	17.4	4.9
1992	11,750	28	176	987	1,528	2,458	3,551	2,416	603	4.6	0.4	2.5	5.5	11.7	19.2	22.9	18.2	4.8
1991	12,053	23	212	991	1,544	2,717	3,573	2,396	592	4.8	0.5	2.5	6.0	12.9	19.5	23.2	18.6	5.0
1990	12,124	34	195	1,001	1,567	2,807	3,532	2,422	564	4.9	0.5	2.6	6.2	13.3	19.5	24.0	18.4	5.2
1989	12,583	36	233	1,029	1,588	3,024	3,731	2,372	568	5.1	0.5	2.8	6.4	14.2	20.9	24.1	19.1	5.4
1988	12,713	35	235	1,102	1,782	3,234	3,661	2,191	470	5.2	0.5	3.1	7.4	15.0	20.8	22.8	16.3	5.6
1987	12,807	39	296	1,059	1,732	3,360	3,693	2,160	466	5.3	0.7	3.1	7.5	15.4	21.2	23.0	16.5	5.7

Table 3. Age-specific number of deaths, age-specific death rates, and age-adjusted death rates¹ from liver cirrhosis with and without mention of alcohol, United States, 1970–2009. (Continued)

Liver cirrhosis subcategory and year	Number of deaths, by age group									Deaths per 100,000 population, by age group								Age-adjusted deaths per 100,000 population
	All ²	0–24	25–34	35–44	45–54	55–64	65–74	75–84	85+	All	25–34	35–44	45–54	55–64	65–74	75–84	85+	
1986	13,071	34	285	1,016	1,861	3,546	3,821	2,053	454	5.4	0.7	3.1	8.2	16.1	22.3	22.5	16.6	5.9
1985	13,192	37	304	952	1,994	3,611	3,782	2,070	440	5.5	0.7	3.0	8.9	16.3	22.4	23.3	16.5	6.0
1984	13,527	47	301	910	2,162	3,792	3,928	2,001	384	5.7	0.7	3.0	9.7	17.1	23.6	23.1	14.8	6.2
1983	13,843	37	342	985	2,343	4,046	3,790	1,903	394	5.9	0.9	3.4	10.5	18.3	23.1	22.6	15.6	6.5
1982	13,876	56	325	981	2,389	4,052	3,880	1,833	358	6.0	0.8	3.5	10.7	18.4	24.0	22.3	14.7	6.6
1981	14,712	49	321	1,084	2,657	4,343	4,090	1,787	378	6.4	0.8	4.1	11.8	19.8	25.7	22.4	16.1	7.1
1980	14,792	65	314	1,104	2,935	4,444	3,906	1,687	331	6.5	0.8	4.3	12.9	20.4	25.0	21.7	14.6	7.2
1979	14,540	62	333	1,222	3,009	4,313	3,755	1,551	293	6.5	0.9	4.9	13.1	20.1	24.5	20.4	13.5	7.2
1978	13,597	80	315	1,117	2,909	4,085	3,395	1,396	295	6.1	0.9	4.6	12.5	19.4	22.7	18.9	14.2	6.8
1977	13,911	77	357	1,184	3,104	4,199	3,389	1,353	245	6.3	1.1	5.0	13.3	20.3	23.1	18.7	12.4	7.1
1976	14,072	81	330	1,265	3,268	4,342	3,272	1,247	262	6.5	1.0	5.5	13.8	21.3	22.9	17.7	14.0	7.3
1975	14,142	101	288	1,273	3,345	4,409	3,240	1,248	236	6.6	0.9	5.6	14.1	22.0	23.2	17.9	12.9	7.4
1974	15,143	111	356	1,453	3,655	4,653	3,433	1,247	232	7.1	1.2	6.4	15.4	23.5	25.2	18.3	13.4	8.1
1973	15,385	105	350	1,585	3,798	4,766	3,320	1,230	229	7.3	1.2	7.0	16.0	24.4	25.0	18.5	14.0	8.3
1972 ³	14,860	94	366	1,608	3,774	4,540	3,002	1,262	212	7.1	1.3	7.1	16.0	23.5	23.0	19.5	13.6	8.2
1971	14,555	128	316	1,495	3,818	4,417	2,947	1,212	217	7.0	1.2	6.5	16.2	23.2	23.1	19.2	14.6	8.1
1970	14,672	146	326	1,618	3,727	4,426	2,970	1,231	225	7.2	1.3	7.0	16.0	23.7	23.8	20.0	15.9	8.3

¹ Rates per 100,000 population computed by the direct standardization method, using the Year 2000 total population of the United States as the standard age distribution.

² Includes deaths in which age of decedent was unknown; age-specific numbers of deaths may not sum to total.

³ Deaths based on a 50-percent sample.

Table 4. Age-adjusted death rates¹ from liver cirrhosis with and without mention of alcohol by sex, race, and Hispanic origin,² United States, 1970–2009.

Liver cirrhosis subcategory and year	All races/origins and both sexes	Male						Female					
		White			Black			White			Black		
		All ³	Hispanic	Non-Hispanic	All ³	Hispanic ⁴	Non-Hispanic	All ³	Hispanic	Non-Hispanic	All ³	Hispanic ⁴	Non-Hispanic
Alcohol-related cirrhosis													
2009	4.5	7.2	12.3	6.5	4.5	1.3	4.6	2.6	2.5	2.7	1.8	0.3	1.8
2008	4.5	7.2	12.1	6.6	4.9	2.2	5.0	2.5	2.4	2.5	1.8	0.3	1.9
2007	4.5	7.1	13.1	6.5	5.3	0.7	5.4	2.4	2.3	2.5	1.7	0.2	1.8
2006	4.1	6.5	12.1	5.9	4.5	3.4	4.5	2.3	2.3	2.3	1.7	0.3	1.8
2005	4.2	6.6	12.3	6.0	5.3	2.1	5.4	2.2	2.1	2.3	1.9	0.6	2.0
2004	4.1	6.5	11.8	6.0	5.4	0.9	5.6	2.2	2.1	2.2	1.9	—	2.0
2003	4.2	6.6	12.4	6.0	6.0	1.4	6.1	2.1	2.3	2.1	2.0	—	2.1
2002	4.2	6.5	13.0	5.8	5.8	2.3	5.8	2.2	2.2	2.2	2.3	0.7	2.3
2001	4.3	6.6	14.4	5.9	6.9	0.6	7.0	2.2	2.5	2.2	2.4	0.3	2.4
2000	4.3	6.8	15.0	6.1	6.9	1.2	7.1	2.0	2.2	2.0	2.8	0.3	2.8
1999	4.4	6.8	14.1	6.2	8.1	2.0	8.2	2.0	2.5	2.0	2.8	0.3	2.8
1998	4.4	6.8	15.0	6.1	8.1	1.8	8.2	2.1	2.2	2.1	2.6	0.6	2.6
1997	4.5	7.0	15.5	6.2	8.4	3.1	8.5	2.2	2.7	2.1	3.2	—	3.2
1996	4.7	7.1	16.8	6.3	9.5	3.3	9.7	2.2	2.6	2.2	3.5	0.5	3.6
1995	4.8	7.3	17.7	6.4	10.4	0.9	10.5	2.2	2.6	2.1	3.7	0.4	3.8
1994	4.9	7.3	18.5	6.5	11.7	2.6	11.8	2.2	2.9	2.2	4.1	0.8	4.1
1993	4.8	7.1	17.7	6.2	11.3	3.5	11.3	2.2	2.9	2.1	3.8	0.7	3.8
1992	4.9	7.4	18.0	6.5	12.5	4.5	12.5	2.2	2.6	2.1	4.3	0.3	4.4
1991	5.0	7.3	17.4	6.4	12.5	4.7	12.6	2.2	3.1	2.1	5.1	1.2	5.2
1990	5.2	7.4			14.7			2.3			5.4		
1989	5.4	7.8			15.5			2.3			5.4		
1988	5.2	7.4			15.6			2.3			5.7		
1987	5.1	7.2			15.7			2.2			5.2		
1986	5.0	7.1			14.7			2.3			5.3		
1985	5.2	7.2			16.2			2.3			5.9		
1984	5.3	7.5			14.8			2.5			5.8		
1983	5.2	7.3			13.9			2.5			5.7		
1982	5.4	7.6			14.2			2.6			5.8		
1981	5.9	8.1			16.9			2.9			6.5		
1980	6.4	8.7			18.8			3.1			7.5		
1979	6.3	8.5			18.5			3.1			7.3		

Table 4. Age-adjusted death rates¹ from liver cirrhosis with and without mention of alcohol by sex, race, and Hispanic origin,² United States, 1970–2009. (Continued)

Liver cirrhosis subcategory and year	All races/origins and both sexes	Male						Female					
		White			Black			White			Black		
		All ³	Hispanic	Non-Hispanic	All ³	Hispanic ⁴	Non-Hispanic	All ³	Hispanic	Non-Hispanic	All ³	Hispanic ⁴	Non-Hispanic
1978	6.5	8.7			18.5			3.2			8.1		
1977	6.7	8.9			20.1			3.4			8.0		
1976	7.0	9.3			20.8			3.4			8.4		
1975	6.9	9.3			19.5			3.3			8.0		
1974	7.1	9.5			19.4			3.5			8.3		
1973	6.9	9.3			18.4			3.4			8.2		
1972 ⁵	7.0	9.3			19.5			3.5			8.0		
1971	6.6	9.0			17.4			3.3			8.0		
1970	6.3	8.5			17.0			3.1			7.9		
Other specified cirrhosis													
2009	0.5	0.4	0.3	0.4	0.3	—	0.3	0.6	0.8	0.6	0.3	—	0.3
2008	0.5	0.4	0.4	0.4	0.2	0.1	0.2	0.6	0.9	0.6	0.2	0.2	0.2
2007	0.4	0.3	0.3	0.3	0.2	0.1	0.2	0.6	0.8	0.5	0.3	0.4	0.3
2006	0.4	0.3	0.3	0.3	0.2	—	0.2	0.5	0.6	0.5	0.3	—	0.3
2005	0.4	0.3	0.3	0.3	0.2	—	0.2	0.5	0.7	0.5	0.3	0.3	0.3
2004	0.4	0.3	0.3	0.3	0.2	—	0.2	0.5	0.7	0.5	0.2	0.2	0.2
2003	0.4	0.3	0.3	0.3	0.3	—	0.3	0.5	0.7	0.5	0.3	—	0.3
2002	0.6	0.4	0.4	0.4	0.4	—	0.4	0.7	1.4	0.7	0.5	0.2	0.5
2001	0.5	0.3	0.5	0.3	0.3	—	0.3	0.7	1.0	0.6	0.5	0.1	0.5
2000	0.5	0.3	0.3	0.3	0.4	0.1	0.4	0.7	1.1	0.6	0.6	0.3	0.6
1999	0.5	0.4	0.4	0.4	0.5	—	0.5	0.7	1.0	0.6	0.6	0.2	0.6
1998	0.4	0.4	0.5	0.4	0.5	—	0.5	0.5	0.9	0.5	0.4	0.3	0.4
1997	0.5	0.4	0.4	0.4	0.6	—	0.6	0.5	0.7	0.5	0.4	0.3	0.4
1996	0.5	0.4	0.5	0.4	0.7	0.3	0.7	0.5	0.7	0.5	0.5	—	0.5
1995	0.5	0.4	0.5	0.4	0.7	—	0.8	0.6	0.8	0.5	0.5	—	0.6
1994	0.5	0.5	0.8	0.4	0.7	—	0.7	0.6	0.9	0.5	0.6	0.3	0.6
1993	0.6	0.6	0.7	0.6	0.9	—	0.9	0.6	1.1	0.6	0.7	—	0.7
1992	0.7	0.6	0.8	0.6	1.2	—	1.3	0.7	1.1	0.7	0.8	—	0.8
1991	0.8	0.7	0.7	0.7	1.2	—	1.2	0.7	0.9	0.7	0.9	—	0.9
1990	0.8	0.7			1.3			0.7			0.9		
1989	0.8	0.8			1.5			0.8			0.8		
1988	0.9	0.9			1.4			0.8			1.1		
1987	1.0	1.0			2.0			0.9			1.2		

Table 4. Age-adjusted death rates¹ from liver cirrhosis with and without mention of alcohol by sex, race, and Hispanic origin,² United States, 1970–2009. (Continued)

Liver cirrhosis subcategory and year	All races/ origins and both sexes	Male						Female						
		White			Black			White			Black			
		All ³	Hispanic	Non-Hispanic	All ³	Hispanic ⁴	Non-Hispanic	All ³	Hispanic	Non-Hispanic	All ³	Hispanic ⁴	Non-Hispanic	
1986	1.0	0.9			1.6			0.8				1.3		
1985	1.1	1.1			2.6			1.0				1.3		
1984	1.2	1.1			2.6			1.0				1.7		
1983	1.2	1.1			2.9			1.0				1.8		
1982	1.3	1.2			3.5			1.1				1.8		
1981	1.3	1.2			3.8			1.0				2.1		
1980	1.5	1.4			4.7			1.1				2.5		
1979	1.4	1.3			4.6			1.1				2.4		
1978	1.9	2.0			5.2			1.3				2.9		
1977	2.0	2.1			6.3			1.4				3.2		
1976	2.2	2.3			5.7			1.5				3.1		
1975	2.4	2.6			6.4			1.8				3.2		
1974	2.7	3.0			7.8			1.8				4.4		
1973	2.9	3.2			8.0			2.0				4.6		
1972 ⁵	2.9	3.2			7.8			2.0				4.0		
1971	3.0	3.5			6.7			2.1				4.0		
1970	3.1	3.6			7.0			2.3				4.3		
Unspecified cirrhosis														
2009	4.4	5.9	8.5	5.6	5.2	1.0	5.3	3.5	6.7	3.2	2.5	1.9	2.5	
2008	4.4	5.9	8.9	5.6	5.3	1.0	5.5	3.4	6.3	3.2	2.2	0.9	2.2	
2007	4.4	5.9	8.6	5.7	5.3	1.4	5.4	3.4	5.9	3.2	2.6	0.8	2.6	
2006	4.4	5.9	8.4	5.7	5.4	0.9	5.5	3.4	6.1	3.2	2.6	0.8	2.6	
2005	4.6	6.1	9.8	5.7	5.9	1.6	6.0	3.5	5.9	3.3	2.7	1.2	2.7	
2004	4.6	6.1	9.4	5.8	6.0	1.3	6.1	3.5	6.5	3.3	2.8	0.9	2.9	
2003	4.9	6.6	9.8	6.3	6.2	2.6	6.3	3.7	6.8	3.5	3.0	1.5	3.1	
2002	4.9	6.5	10.8	6.2	6.0	2.5	6.1	3.7	6.2	3.5	3.1	0.9	3.1	
2001	4.9	6.5	10.5	6.1	6.8	2.3	6.9	3.7	6.0	3.5	2.9	0.9	2.9	
2000	4.8	6.5	10.5	6.2	6.4	1.9	6.5	3.5	6.5	3.4	3.1	1.6	3.1	
1999	4.9	6.6	10.7	6.2	6.6	1.5	6.7	3.5	6.2	3.3	3.2	1.1	3.2	
1998	4.6	6.0	10.4	5.7	6.4	1.1	6.4	3.4	6.0	3.2	2.9	1.1	2.9	
1997	4.6	6.0	10.0	5.8	6.6	3.6	6.6	3.3	6.5	3.1	3.1	2.0	3.1	
1996	4.5	6.1	11.2	5.8	6.5	2.6	6.6	3.3	6.1	3.1	3.0	1.2	3.0	
1995	4.6	6.2	10.5	5.9	6.8	1.5	7.0	3.2	6.0	3.1	3.3	1.8	3.3	
1994	4.7	6.3	10.7	6.0	6.9	1.2	7.0	3.4	6.1	3.2	3.6	1.1	3.6	

Table 4. Age-adjusted death rates¹ from liver cirrhosis with and without mention of alcohol by sex, race, and Hispanic origin,² United States, 1970–2009. (Continued)

Liver cirrhosis subcategory and year	All races/ origins and both sexes	Male						Female					
		White			Black			White			Black		
		All ³	Hispanic	Non-Hispanic	All ³	Hispanic ⁴	Non-Hispanic	All ³	Hispanic	Non-Hispanic	All ³	Hispanic ⁴	Non-Hispanic
1993	4.9	6.5	10.7	6.2	7.3	1.6	7.5	3.5	5.8	3.3	3.8	0.6	3.8
1992	4.8	6.6	10.4	6.3	7.3	2.4	7.5	3.4	6.5	3.2	3.4	0.5	3.5
1991	5.0	6.7	10.6	6.4	7.2	1.5	7.3	3.6	6.5	3.4	4.1	0.9	4.1
1990	5.2	6.9			8.0			3.6			4.3		
1989	5.4	7.3			8.5			3.8			4.3		
1988	5.6	7.7			8.5			3.7			4.7		
1987	5.7	7.7			9.2			3.8			4.5		
1986	5.9	8.0			9.1			4.0			4.5		
1985	6.0	8.1			9.5			4.1			5.0		
1984	6.2	8.5			9.6			4.2			4.9		
1983	6.5	8.9			10.3			4.3			5.3		
1982	6.6	9.2			9.7			4.3			5.3		
1981	7.1	9.7			11.2			4.7			6.2		
1980	7.2	9.8			12.0			4.7			6.5		
1979	7.2	9.9			12.6			4.7			6.0		
1978	6.8	9.5			12.3			4.3			5.8		
1977	7.1	9.9			12.4			4.4			6.5		
1976	7.3	10.1			12.7			4.6			6.3		
1975	7.4	10.4			13.3			4.6			6.8		
1974	8.1	11.0			14.0			5.2			7.2		
1973	8.3	11.4			14.4			5.2			8.2		
1972 ⁵	8.2	11.2			15.0			5.0			8.0		
1971	8.1	11.0			13.0			5.3			7.3		
1970	8.3	11.2			13.5			5.4			7.9		

— No deaths in this table cell.

¹ Rates per 100,000 population computed by the direct standardization method, using the Year 2000 total population of the United States as the standard age distribution.

² Excludes deaths for which Hispanic origin was unknown and all 1991 through 1996 deaths from Oklahoma and New Hampshire where Hispanic origin was unknown in more than 90 percent of all cirrhosis deaths. Data on Hispanic origin not shown for years earlier than 1991.

³ Includes deaths for which Hispanic origin was unknown.

⁴ Rates are not reliable due to the small number of cirrhosis deaths among Hispanic Blacks.

⁵ Deaths based on a 50-percent sample.

Table 5. Age-specific number of deaths, 5-year annual moving average of age-specific death rates, and age-adjusted death rates¹ from all liver cirrhosis by Hispanic subgroup and sex, United States, 2000–2009.

Hispanic subgroup ² and sex	Number of deaths, by age group									Deaths per 100,000 population, by age group							Age-adjusted deaths per 100,000 population	
	All ³	0–24	25–34	35–44	45–54	55–64	65–74	75–84	85+	All	25–34	35–44	45–54	55–64	65–74	75–84		85+
Both sexes																		
Mexican																		
2005–2009.....	13,322	38	378	1,712	3,907	3,319	2,283	1,363	320	8.9	1.4	8.0	27.3	42.8	57.6	65.4	49.8	16.4
2004–2008.....	12,566	46	343	1,681	3,755	3,010	2,142	1,324	263	8.7	1.3	8.1	27.6	41.6	57.7	65.7	43.6	16.3
2003–2007.....	12,053	42	335	1,690	3,553	2,834	2,090	1,275	232	8.6	1.3	8.4	27.6	41.7	60.0	65.1	41.2	16.4
2002–2006.....	11,662	51	323	1,713	3,420	2,675	2,052	1,203	223	8.5	1.2	8.8	28.0	41.6	62.2	64.0	41.9	16.7
2001–2005.....	11,421	51	327	1,720	3,316	2,596	2,062	1,149	199	8.6	1.3	9.2	28.7	43.0	65.1	65.5	39.7	17.2
2000–2004.....	11,058	45	332	1,714	3,202	2,439	2,037	1,097	191	8.8	1.4	9.7	29.4	43.3	65.7	65.8	39.4	17.4
Puerto Rican																		
2005–2009.....	1,994	6	17	141	543	628	399	210	50	10.0	0.6	5.0	23.7	43.1	50.4	53.4	28.7	14.0
2004–2008.....	1,996	6	14	157	555	597	417	211	39	10.3	0.5	5.7	25.2	42.2	51.2	58.2	26.9	14.5
2003–2007.....	1,997	5	16	166	577	574	408	219	32	10.5	0.5	6.0	27.2	42.0	51.2	64.0	26.9	15.1
2002–2006.....	2,021	5	15	184	600	590	391	207	29	10.8	0.5	6.8	29.2	44.9	50.5	67.8	27.3	15.8
2001–2005.....	2,028	4	19	212	616	556	393	205	23	11.2	0.7	7.9	30.8	44.9	51.6	72.8	23.6	16.5
2000–2004.....	2,054	4	21	247	608	566	387	195	26	11.9	0.8	9.5	32.1	48.3	52.9	69.5	28.4	17.3
Cuban																		
2005–2009.....	657	1	6	26	106	120	182	161	55	8.0	0.6	1.9	10.3	14.7	25.9	28.2	23.6	6.4
2004–2008.....	641	1	6	26	107	117	171	164	49	7.9	0.6	1.9	11.1	14.4	24.3	29.1	21.0	6.4
2003–2007.....	629	1	5	28	92	126	163	163	51	7.9	0.5	2.0	10.0	15.4	22.2	29.3	21.7	6.2
2002–2006.....	625	—	6	23	83	124	171	172	46	8.1	0.6	1.8	9.6	15.0	21.6	30.9	19.4	6.1
2001–2005.....	646	—	4	24	78	132	184	182	42	8.7	0.4	2.0	9.1	16.1	22.4	33.6	18.9	6.3
2000–2004.....	658	1	5	31	80	135	187	177	42	9.2	0.6	2.7	9.3	16.6	22.4	33.3	20.0	6.5
Other Hispanic⁴																		
2005–2009.....	3,867	10	124	519	1,129	918	617	432	114	7.7	1.4	6.3	18.6	26.8	35.4	44.9	31.9	10.9
2004–2008.....	3,677	9	113	515	1,071	848	598	414	105	7.6	1.3	6.4	18.5	26.3	35.7	46.7	33.6	11.0
2003–2007.....	3,451	10	115	478	1,002	799	544	412	87	7.5	1.4	6.1	18.4	27.2	33.9	53.6	34.1	11.2
2002–2006.....	3,298	11	114	486	930	738	548	381	86	7.5	1.4	6.5	18.1	28.0	36.5	56.0	43.4	11.7
2001–2005.....	3,203	9	102	526	900	693	551	340	78	7.7	1.3	7.3	18.9	28.8	39.8	54.0	49.8	12.3
2000–2004.....	3,126	10	101	526	866	659	554	335	74	8.0	1.4	7.7	19.8	28.9	42.7	56.5	45.9	12.7
Male																		
Mexican																		
2005–2009.....	9,483	24	301	1,386	3,128	2,464	1,398	640	140	12.1	2.0	11.8	41.6	63.3	74.9	73.0	59.5	22.5
2004–2008.....	9,003	28	274	1,361	3,047	2,245	1,286	641	119	11.8	1.8	12.1	42.9	62.0	73.9	76.7	54.2	22.6
2003–2007.....	8,624	25	264	1,373	2,896	2,119	1,222	625	98	11.7	1.8	12.6	43.3	62.3	75.2	78.1	47.7	22.8
2002–2006.....	8,339	32	253	1,388	2,801	1,992	1,192	593	86	11.6	1.7	13.2	44.3	62.7	78.4	78.4	44.5	23.2

Table 5. Age-specific number of deaths, 5-year annual moving average of age-specific death rates, and age-adjusted death rates¹ from all liver cirrhosis by Hispanic subgroup and sex, United States, 2000–2009. (Continued)

Hispanic subgroup ² and sex	Number of deaths, by age group									Deaths per 100,000 population, by age group								Age-adjusted deaths per 100,000 population
	All ³	0–24	25–34	35–44	45–54	55–64	65–74	75–84	85+	All	25–34	35–44	45–54	55–64	65–74	75–84	85+	
2001–2005	8,231	30	261	1,397	2,734	1,948	1,205	581	74	11.8	1.9	13.9	45.9	65.7	83.3	81.4	41.5	24.3
2000–2004	7,992	27	276	1,398	2,641	1,839	1,190	546	74	12.2	2.1	14.7	47.3	67.0	84.3	77.5	45.1	24.7
Puerto Rican																		
2005–2009	1,420	4	9	104	437	479	257	112	18	14.6	0.6	7.8	40.8	71.9	76.0	70.4	29.0	21.8
2004–2008	1,410	5	8	115	437	451	270	110	14	15.0	0.5	8.7	42.6	70.5	75.6	77.9	26.5	22.3
2003–2007	1,412	4	7	126	463	429	257	115	11	15.2	0.5	9.6	46.0	69.3	74.3	86.5	25.8	23.1
2002–2006	1,443	4	7	142	486	444	243	105	12	15.9	0.5	10.8	49.4	73.2	73.4	89.6	31.1	24.3
2001–2005	1,443	3	10	164	495	411	249	103	8	16.5	0.7	12.6	51.6	72.4	77.0	95.8	22.0	25.2
2000–2004	1,460	3	12	194	487	418	244	94	8	17.4	0.9	15.7	53.3	79.1	78.5	86.7	22.9	26.2
Cuban																		
2005–2009	415	1	5	23	82	96	120	68	20	10.0	0.9	3.1	14.9	23.9	36.2	28.5	20.8	8.7
2004–2008	414	1	5	24	83	97	113	73	18	10.0	0.9	3.2	16.0	24.1	33.3	30.3	20.5	8.8
2003–2007	415	1	5	24	76	104	105	78	22	10.2	1.0	3.2	15.3	26.7	29.3	31.1	28.1	8.8
2002–2006	402	—	6	19	68	102	108	80	19	10.2	1.2	2.7	14.6	26.9	27.8	30.6	26.3	8.5
2001–2005	412	—	4	19	64	109	115	84	17	10.8	0.8	2.9	14.2	28.9	28.2	33.6	28.9	8.8
2000–2004	425	1	5	24	68	111	116	83	17	11.7	1.0	3.8	15.3	29.6	28.1	35.5	30.7	9.4
Other Hispanic ⁴																		
2005–2009	2,560	8	100	389	849	668	342	157	43	10.1	2.0	9.2	29.3	44.0	48.6	41.0	42.7	15.3
2004–2008	2,460	7	93	388	823	621	324	162	38	10.1	1.9	9.4	29.7	43.7	49.3	45.4	41.9	15.6
2003–2007	2,349	8	96	369	788	589	294	170	31	10.1	2.0	9.3	30.4	45.7	46.8	56.0	40.2	16.1
2002–2006	2,252	6	93	369	739	542	300	170	29	10.2	2.1	9.8	30.4	46.3	50.3	64.1	47.8	17.0
2001–2005	2,225	4	85	404	730	505	312	157	24	10.6	2.0	11.3	32.7	46.7	57.3	66.7	43.3	18.1
2000–2004	2,173	4	82	405	717	468	315	156	25	11.1	2.1	12.1	35.4	45.9	62.4	75.8	39.5	19.2
Female																		
Mexican																		
2005–2009	3,839	14	77	326	779	855	885	723	180	5.4	0.6	3.3	11.5	22.1	42.2	59.8	44.2	10.3
2004–2008	3,563	18	69	320	708	765	856	683	144	5.2	0.6	3.4	10.9	21.2	43.5	58.0	37.6	10.0
2003–2007	3,429	17	71	317	657	715	868	650	134	5.1	0.6	3.4	10.6	21.0	46.8	56.1	37.4	10.1
2002–2006	3,323	19	70	325	619	683	860	610	137	5.1	0.6	3.6	10.5	21.0	48.3	54.3	40.5	10.2
2001–2005	3,190	21	66	323	582	648	857	568	125	5.1	0.6	3.8	10.4	21.1	49.9	54.6	38.7	10.3
2000–2004	3,066	18	56	316	561	600	847	551	117	5.1	0.5	3.9	10.6	20.8	50.2	57.3	36.5	10.4
Puerto Rican																		
2005–2009	574	2	8	37	106	149	142	98	32	5.6	0.5	2.5	8.7	18.9	31.3	41.8	28.6	7.7
2004–2008	586	1	6	42	118	146	147	101	25	5.9	0.4	2.9	10.0	18.9	32.1	45.7	27.2	8.1
2003–2007	585	1	9	40	114	145	151	104	21	6.0	0.6	2.8	10.2	19.4	33.5	49.8	27.5	8.5

Table 5. Age-specific number of deaths, 5-year annual moving average of age-specific death rates, and age-adjusted death rates¹ from all liver cirrhosis by Hispanic subgroup and sex, United States, 2000–2009. (Continued)

Hispanic subgroup ² and sex	Number of deaths, by age group									Deaths per 100,000 population, by age group								Age-adjusted deaths per 100,000 population	
	All ³	0–24	25–34	35–44	45–54	55–64	65–74	75–84	85+	All	25–34	35–44	45–54	55–64	65–74	75–84	85+		
2002–2006	578	1	8	42	114	146	148	102	17	6.0	0.5	3.0	10.6	20.7	33.4	54.3	25.2	8.8	
2001–2005	585	1	9	48	121	145	144	102	15	6.3	0.6	3.4	11.6	21.6	32.9	58.5	24.5	9.3	
2000–2004	594	1	9	53	121	148	143	101	18	6.7	0.6	3.9	12.3	23.1	33.9	58.7	31.7	9.8	
Cuban																			
2005–2009	242	—	1	3	24	24	62	93	35	5.9	0.2	0.5	5.0	5.8	16.7	27.9	25.6	4.0	
2004–2008	227	—	1	2	24	20	58	91	31	5.7	0.2	0.3	5.4	4.9	16.0	28.2	21.3	3.9	
2003–2007	214	—	—	4	16	22	58	85	29	5.5	—	0.6	3.8	5.1	15.4	27.9	18.5	3.6	
2002–2006	223	—	—	4	15	22	63	92	27	5.9	—	0.7	3.7	4.9	15.7	31.2	16.4	3.7	
2001–2005	234	—	—	5	14	23	69	98	25	6.4	—	0.9	3.4	5.2	16.7	33.6	15.3	3.9	
2000–2004	233	—	—	7	12	24	71	94	25	6.6	—	1.3	2.9	5.5	16.9	31.6	16.1	3.9	
Other Hispanic ⁴																			
2005–2009	1,307	2	24	130	280	250	275	275	71	5.3	0.6	3.2	8.9	13.1	26.5	47.5	27.7	7.3	
2004–2008	1,217	2	20	127	248	227	274	252	67	5.1	0.5	3.2	8.2	12.6	26.9	47.6	30.3	7.2	
2003–2007	1,102	2	19	109	214	210	250	242	56	4.8	0.5	2.8	7.5	12.7	25.6	52.0	31.5	7.2	
2002–2006	1,046	5	21	117	191	196	248	211	57	4.8	0.6	3.1	7.0	13.4	27.4	50.8	41.5	7.5	
2001–2005	978	5	17	122	170	188	239	183	54	4.7	0.5	3.4	6.7	14.2	28.5	46.4	53.3	7.6	
2000–2004	953	6	19	121	149	191	239	179	49	4.8	0.6	3.5	6.4	15.1	30.2	46.3	50.0	7.7	

— No deaths in this table cell.

¹ Rates per 100,000 population computed by the direct standardization method, using the Year 2000 total population of the United States as the standard age distribution.

² Includes all races, and excludes deaths for which Hispanic origin was unknown.

³ Includes deaths for which age of decedent was unknown; age-specific numbers of deaths may not sum to total.

⁴ Includes Central and South American and Other and unknown Hispanic subgroups.

Table 6. Age-specific number of deaths, 5-year annual moving average of age-specific death rates, and age-adjusted death rates¹ from liver cirrhosis with and without mention of alcohol, by Hispanic subgroup and sex, United States, 2000–2009.

Liver cirrhosis Subcategory, Hispanic subgroup, ² and sex	Number of deaths, by age group									Deaths per 100,000 population, by age group								Age-adjusted deaths per 100,000 population
	All ³	0–24	25–34	35–44	45–54	55–64	65–74	75–84	85+	All	25–34	35–44	45–54	55–64	65–74	75–84	85+	
Alcohol-related cirrhosis																		
Both sexes																		
Mexican																		
2005–2009.....	7,141	8	271	1,192	2,542	1,791	920	353	64	4.8	1.0	5.5	17.8	23.1	23.2	16.9	10.0	7.9
2004–2008.....	6,696	6	244	1,153	2,425	1,619	839	360	50	4.6	0.9	5.5	17.8	22.4	22.6	17.9	8.3	7.8
2003–2007.....	6,404	5	235	1,157	2,267	1,534	820	347	39	4.6	0.9	5.8	17.6	22.6	23.6	17.7	6.9	7.9
2002–2006.....	6,052	8	214	1,154	2,135	1,418	795	297	31	4.4	0.8	5.9	17.5	22.0	24.1	15.8	5.8	7.8
2001–2005.....	5,913	7	215	1,158	2,060	1,367	796	282	27	4.5	0.8	6.2	17.8	22.6	25.1	16.1	5.4	8.0
2000–2004.....	5,797	8	226	1,176	1,985	1,316	784	275	26	4.6	1.0	6.6	18.2	23.4	25.3	16.5	5.4	8.2
Puerto Rican																		
2005–2009.....	838	1	6	78	245	312	143	47	6	4.2	0.2	2.8	10.7	21.4	18.1	12.0	3.4	5.6
2004–2008.....	828	1	5	84	246	288	151	48	5	4.3	0.2	3.0	11.2	20.4	18.5	13.2	3.5	5.7
2003–2007.....	821	1	5	91	258	269	137	55	5	4.3	0.2	3.3	12.2	19.7	17.2	16.1	4.2	5.8
2002–2006.....	826	—	5	96	264	280	123	53	5	4.4	0.2	3.5	12.8	21.3	15.9	17.4	4.7	6.1
2001–2005.....	814	—	7	96	272	258	126	51	4	4.5	0.2	3.6	13.6	20.8	16.6	18.1	4.1	6.2
2000–2004.....	863	1	6	112	291	276	125	49	3	5.0	0.2	4.3	15.3	23.6	17.1	17.5	3.3	6.8
Cuban																		
2005–2009.....	183	—	2	16	61	47	45	10	2	2.2	0.2	1.2	5.9	5.8	6.4	1.7	0.9	2.0
2004–2008.....	184	—	2	14	58	51	44	13	2	2.3	0.2	1.0	6.0	6.3	6.3	2.3	0.9	2.1
2003–2007.....	184	—	1	16	44	64	39	15	5	2.3	0.1	1.2	4.8	7.8	5.3	2.7	2.1	2.0
2002–2006.....	169	—	2	13	35	56	47	13	3	2.2	0.2	1.0	4.0	6.8	5.9	2.3	1.3	1.8
2001–2005.....	170	—	1	13	31	56	49	17	3	2.3	0.1	1.1	3.6	6.8	6.0	3.1	1.4	1.8
2000–2004.....	183	—	2	14	38	58	48	20	3	2.6	0.2	1.2	4.4	7.1	5.8	3.8	1.4	2.0
Other Hispanic ⁴																		
2005–2009.....	2,128	1	98	380	778	522	259	70	17	4.3	1.1	4.6	12.8	15.2	14.9	7.3	4.8	5.3
2004–2008.....	1,980	1	90	372	722	475	231	72	14	4.1	1.0	4.6	12.5	14.7	13.8	8.1	4.5	5.2
2003–2007.....	1,839	1	89	341	655	448	209	81	12	4.0	1.0	4.4	12.0	15.3	13.0	10.5	4.7	5.2
2002–2006.....	1,751	1	85	340	613	409	202	84	14	4.0	1.0	4.5	11.9	15.5	13.4	12.3	7.1	5.4
2001–2005.....	1,713	1	78	368	583	387	203	80	10	4.1	1.0	5.1	12.2	16.1	14.7	12.7	6.4	5.7
2000–2004.....	1,642	2	72	370	543	368	197	81	8	4.2	1.0	5.4	12.4	16.1	15.2	13.7	5.0	5.8
Male																		
Mexican																		
2005–2009.....	5,982	7	221	981	2,123	1,531	785	277	57	7.6	1.5	8.4	28.2	39.3	42.1	31.6	24.2	13.4

Table 6. Age-specific number of deaths, 5-year annual moving average of age-specific death rates, and age-adjusted death rates¹ from liver cirrhosis with and without mention of alcohol, by Hispanic subgroup and sex, United States, 2000–2009. (Continued)

Liver cirrhosis Subcategory, Hispanic subgroup, ² and sex	Number of deaths, by age group									Deaths per 100,000 population, by age group								Age-adjusted deaths per 100,000 population
	All ³	0–24	25–34	35–44	45–54	55–64	65–74	75–84	85+	All	25–34	35–44	45–54	55–64	65–74	75–84	85+	
2004–2008	5,633	6	201	949	2,061	1,380	706	285	45	7.4	1.3	8.4	29.0	38.1	40.5	34.1	20.5	13.3
2003–2007	5,386	5	191	958	1,948	1,303	673	274	34	7.3	1.3	8.8	29.1	38.3	41.4	34.3	16.5	13.4
2002–2006	5,091	8	178	958	1,839	1,205	644	235	24	7.1	1.2	9.1	29.1	37.9	42.3	31.1	12.4	13.3
2001–2005	5,018	7	181	971	1,780	1,183	651	222	22	7.2	1.3	9.7	29.9	39.9	45.0	31.1	12.3	13.8
2000–2004	4,938	8	198	980	1,722	1,140	650	219	20	7.5	1.5	10.3	30.8	41.5	46.0	31.1	12.2	14.3
Puerto Rican																		
2005–2009	683	—	5	59	196	257	124	38	4	7.0	0.3	4.4	18.3	38.6	36.7	23.9	6.4	10.2
2004–2008	667	—	4	61	195	236	128	39	4	7.1	0.3	4.6	19.0	36.9	35.9	27.6	7.6	10.3
2003–2007	670	—	4	68	213	220	116	45	4	7.2	0.3	5.2	21.2	35.6	33.5	33.9	9.4	10.7
2002–2006	677	—	4	75	221	228	104	41	4	7.5	0.3	5.7	22.5	37.6	31.4	35.0	10.4	11.1
2001–2005	659	—	5	77	229	202	106	37	3	7.5	0.4	5.9	23.9	35.6	32.8	34.4	8.3	11.2
2000–2004	708	1	4	90	245	223	107	36	2	8.5	0.3	7.3	26.8	42.2	34.4	33.2	5.7	12.4
Cuban																		
2005–2009	158	—	1	14	49	45	39	8	2	3.8	0.2	1.9	8.9	11.2	11.8	3.4	2.1	3.5
2004–2008	161	—	1	13	47	48	39	11	2	3.9	0.2	1.7	9.1	11.9	11.5	4.6	2.3	3.6
2003–2007	163	—	1	13	40	59	33	13	4	4.0	0.2	1.7	8.0	15.2	9.2	5.2	5.1	3.6
2002–2006	153	—	2	11	33	52	41	12	2	3.9	0.4	1.6	7.1	13.7	10.5	4.6	2.8	3.4
2001–2005	152	—	1	11	31	50	43	14	2	4.0	0.2	1.7	6.9	13.3	10.6	5.6	3.4	3.4
2000–2004	165	—	2	12	37	52	42	18	2	4.5	0.4	1.9	8.3	13.9	10.2	7.7	3.6	3.8
Other Hispanic ⁴																		
2005–2009	1,669	1	79	287	609	425	200	51	14	6.6	1.6	6.8	21.0	28.0	28.4	13.3	13.9	9.3
2004–2008	1,571	1	74	283	577	388	182	51	12	6.4	1.5	6.9	20.8	27.3	27.7	14.3	13.2	9.2
2003–2007	1,481	1	73	270	534	369	161	59	11	6.3	1.6	6.8	20.6	28.6	25.6	19.5	14.3	9.4
2002–2006	1,421	1	70	264	505	340	164	61	13	6.4	1.6	7.0	20.8	29.0	27.5	23.0	21.4	9.9
2001–2005	1,393	1	66	288	487	316	165	58	9	6.6	1.6	8.1	21.8	29.2	30.3	24.7	16.2	10.4
2000–2004	1,345	2	61	292	464	300	162	56	7	6.9	1.6	9.7	22.9	29.4	32.1	27.2	11.1	10.8
Female																		
Mexican																		
2005–2009	1,159	1	50	211	419	260	135	76	7	1.6	0.4	2.2	6.2	6.7	6.4	6.3	1.7	2.6
2004–2008	1,063	—	43	204	364	239	133	75	5	1.5	0.4	2.1	5.6	6.6	6.8	6.4	1.3	2.5
2003–2007	1,018	—	44	199	319	231	147	73	5	1.5	0.4	2.2	5.1	6.8	7.9	6.3	1.4	2.5
2002–2006	961	—	36	196	296	213	151	62	7	1.5	0.3	2.2	5.0	6.5	8.5	5.5	2.1	2.5
2001–2005	895	—	34	187	280	184	145	60	5	1.4	0.3	2.2	5.0	6.0	8.4	5.8	1.5	2.4
2000–2004	859	—	28	196	263	176	134	56	6	1.4	0.3	2.4	5.0	6.1	7.9	5.8	1.9	2.4

Table 6. Age-specific number of deaths, 5-year annual moving average of age-specific death rates, and age-adjusted death rates¹ from liver cirrhosis with and without mention of alcohol, by Hispanic subgroup and sex, United States, 2000–2009. (Continued)

Liver cirrhosis Subcategory, Hispanic subgroup, ² and sex	Number of deaths, by age group									Deaths per 100,000 population, by age group								Age-adjusted deaths per 100,000 population
	All ³	0–24	25–34	35–44	45–54	55–64	65–74	75–84	85+	All	25–34	35–44	45–54	55–64	65–74	75–84	85+	
Puerto Rican																		
2005–2009	155	1	1	19	49	55	19	9	2	1.5	0.1	1.3	4.0	7.0	4.2	3.8	1.8	1.9
2004–2008	161	1	1	23	51	52	23	9	1	1.6	0.1	1.6	4.3	6.7	5.0	4.1	1.1	2.0
2003–2007	151	1	1	23	45	49	21	10	1	1.5	0.1	1.6	4.0	6.6	4.7	4.8	1.3	1.9
2002–2006	149	—	1	21	43	52	19	12	1	1.6	0.1	1.5	4.0	7.4	4.3	6.4	1.5	2.0
2001–2005	155	—	2	19	43	56	20	14	1	1.7	0.1	1.4	4.1	8.3	4.6	8.0	1.6	2.2
2000–2004	155	—	2	22	46	53	18	13	1	1.7	0.1	1.6	4.7	8.3	4.3	7.5	1.8	2.3
Cuban																		
2005–2009	25	—	1	2	12	2	6	2	—	0.6	0.2	0.3	2.5	0.5	1.6	0.6	—	0.6
2004–2008	23	—	1	1	11	3	5	2	—	0.6	0.2	0.2	2.5	0.7	1.4	0.6	—	0.6
2003–2007	21	—	—	3	4	5	6	2	1	0.5	—	0.5	0.9	1.2	1.6	0.7	0.6	0.5
2002–2006	16	—	—	2	2	4	6	1	1	0.4	—	0.3	0.5	0.9	1.5	0.3	0.6	0.3
2001–2005	18	—	—	2	—	6	6	3	1	0.5	—	0.4	—	1.3	1.5	1.0	0.6	0.3
2000–2004	18	—	—	2	1	6	6	2	1	0.5	—	0.4	0.2	1.4	1.4	0.7	0.6	0.3
Other Hispanic⁴																		
2005–2009	459	—	19	93	169	97	59	19	3	1.9	0.5	2.3	5.4	5.1	5.7	3.3	1.2	2.1
2004–2008	409	—	16	89	145	87	49	21	2	1.7	0.4	2.2	4.8	4.8	4.8	4.0	0.9	2.0
2003–2007	358	—	16	71	121	79	48	22	1	1.6	0.4	1.9	4.2	4.8	4.9	4.7	0.6	1.9
2002–2006	330	—	15	76	108	69	38	23	1	1.5	0.4	2.0	4.0	4.7	4.2	5.5	0.7	1.9
2001–2005	320	—	12	80	96	71	38	22	1	1.5	0.3	2.2	3.8	5.3	4.5	5.6	1.0	1.9
2000–2004	297	—	11	78	79	68	35	25	1	1.5	0.3	2.2	3.4	5.4	4.4	6.5	1.0	1.9
All Other cirrhosis																		
Both sexes																		
Mexican																		
2005–2009	6,181	30	107	520	1,365	1,528	1,363	1,010	256	4.1	0.4	2.4	9.5	19.7	34.4	48.4	39.9	8.5
2004–2008	5,870	40	99	528	1,330	1,391	1,303	964	213	4.0	0.4	2.5	9.8	19.2	35.1	47.9	35.4	8.5
2003–2007	5,649	37	100	533	1,286	1,300	1,270	928	193	4.0	0.4	2.7	10.0	19.1	36.5	47.4	34.2	8.6
2002–2006	5,610	43	109	559	1,285	1,257	1,257	906	192	4.1	0.4	2.9	10.5	19.5	38.1	48.2	36.1	8.9
2001–2005	5,508	44	112	562	1,256	1,229	1,266	867	172	4.2	0.4	3.0	10.9	20.3	40.0	49.4	34.3	9.2
2000–2004	5,261	37	106	538	1,217	1,123	1,253	822	165	4.2	0.4	3.0	11.2	19.9	40.4	49.3	34.0	9.2
Puerto Rican																		
2005–2009	1,156	5	11	63	298	316	256	163	44	5.8	0.4	2.3	13.0	21.7	32.3	41.4	25.3	8.5
2004–2008	1,168	5	9	73	309	309	266	163	34	6.0	0.3	2.6	14.0	21.9	32.7	45.0	23.5	8.8
2003–2007	1,176	4	11	75	319	305	271	164	27	6.2	0.4	2.7	15.0	22.3	34.0	48.0	22.7	9.2
2002–2006	1,195	5	10	88	336	310	268	154	24	6.4	0.3	3.2	16.4	23.6	34.6	50.5	22.6	9.8

Table 6. Age-specific number of deaths, 5-year annual moving average of age-specific death rates, and age-adjusted death rates¹ from liver cirrhosis with and without mention of alcohol, by Hispanic subgroup and sex, United States, 2000–2009. (Continued)

Liver cirrhosis Subcategory, Hispanic subgroup, ² and sex	Number of deaths, by age group									Deaths per 100,000 population, by age group								Age-adjusted deaths per 100,000 population
	All ³	0–24	25–34	35–44	45–54	55–64	65–74	75–84	85+	All	25–34	35–44	45–54	55–64	65–74	75–84	85+	
2001–2005	1,214	4	12	116	344	298	267	154	19	6.7	0.4	4.3	17.2	24.1	35.1	54.7	19.5	10.3
2000–2004	1,191	3	15	135	317	290	262	146	23	6.9	0.5	5.2	16.7	24.8	35.8	52.0	25.1	10.4
Cuban																		
2005–2009	474	1	4	10	45	73	137	151	53	5.7	0.4	0.7	4.4	9.0	19.5	26.4	22.8	4.4
2004–2008	457	1	4	12	49	66	127	151	47	5.6	0.4	0.9	5.1	8.1	18.1	26.8	20.2	4.3
2003–2007	445	1	4	12	48	62	124	148	46	5.6	0.4	0.9	5.2	7.6	16.9	26.6	19.6	4.2
2002–2006	456	—	4	10	48	68	124	159	43	5.9	0.4	0.8	5.5	8.2	15.7	28.6	18.2	4.2
2001–2005	476	—	3	11	47	76	135	165	39	6.4	0.3	0.9	5.5	9.2	16.4	30.4	17.6	4.5
2000–2004	475	1	3	17	42	77	139	157	39	6.6	0.4	1.5	4.9	9.5	16.7	29.5	18.5	4.5
Other Hispanic⁴																		
2005–2009	1,739	9	26	139	351	396	358	362	97	3.5	0.3	1.7	5.8	11.6	20.6	37.6	27.2	5.6
2004–2008	1,697	8	23	143	349	373	367	342	91	3.5	0.3	1.8	6.0	11.6	21.9	38.6	29.2	5.8
2003–2007	1,612	9	26	137	347	351	335	331	75	3.5	0.3	1.8	6.4	11.9	20.9	43.1	29.4	6.0
2002–2006	1,547	10	29	146	317	329	346	297	72	3.5	0.4	2.0	6.2	12.5	23.0	43.7	36.4	6.3
2001–2005	1,490	8	24	158	317	306	348	260	68	3.6	0.3	2.2	6.7	12.7	25.2	41.3	43.4	6.6
2000–2004	1,484	8	29	156	323	291	357	254	66	3.8	0.4	2.3	7.4	12.7	27.5	42.9	40.9	6.9
Male																		
Mexican																		
2005–2009	3,501	17	80	405	1,005	933	613	363	83	4.5	0.5	3.4	13.4	24.0	32.9	41.4	35.3	9.1
2004–2008	3,370	22	73	412	986	865	580	356	74	4.4	0.5	3.6	13.9	23.9	33.3	42.6	33.7	9.3
2003–2007	3,238	20	73	415	948	816	549	351	64	4.4	0.5	3.8	14.2	24.0	33.8	43.9	31.1	9.4
2002–2006	3,248	24	75	430	962	787	548	358	62	4.5	0.5	4.1	15.2	24.8	36.0	47.4	32.0	10.0
2001–2005	3,213	23	80	426	954	765	554	359	52	4.6	0.6	4.2	16.0	25.8	38.3	50.3	29.2	10.4
2000–2004	3,054	19	78	418	919	699	540	327	54	4.6	0.6	4.4	16.5	25.4	38.2	46.4	32.9	10.4
Puerto Rican																		
2005–2009	737	4	4	45	241	222	133	74	14	7.6	0.3	3.4	22.5	33.3	39.3	46.5	22.5	11.6
2004–2008	743	5	4	54	242	215	142	71	10	7.9	0.3	4.1	23.6	33.6	39.8	50.3	18.9	12.0
2003–2007	742	4	3	58	250	209	141	70	7	8.0	0.2	4.4	24.8	33.8	40.7	52.7	16.4	12.4
2002–2006	766	4	3	67	265	216	139	64	8	8.4	0.2	5.1	27.0	35.6	42.0	54.6	20.7	13.2
2001–2005	784	3	5	87	266	209	143	66	5	8.9	0.4	6.7	27.7	36.8	44.2	61.4	13.8	14.0
2000–2004	752	2	8	104	242	195	137	58	6	9.0	0.6	8.4	26.5	36.9	44.1	53.5	17.2	13.8
Cuban																		
2005–2009	257	1	4	9	33	51	81	60	18	6.2	0.7	1.2	6.0	12.7	24.5	25.1	18.7	5.3
2004–2008	253	1	4	11	36	49	74	62	16	6.1	0.7	1.5	6.9	12.2	21.8	25.8	18.2	5.2
2003–2007	252	1	4	11	36	45	72	65	18	6.2	0.8	1.5	7.2	11.6	20.1	25.9	23.0	5.2

Table 6. Age-specific number of deaths, 5-year annual moving average of age-specific death rates, and age-adjusted death rates¹ from liver cirrhosis with and without mention of alcohol, by Hispanic subgroup and sex, United States, 2000–2009. (Continued)

Liver cirrhosis Subcategory, Hispanic subgroup, ² and sex	Number of deaths, by age group									Deaths per 100,000 population, by age group								Age-adjusted deaths per 100,000 population	
	All ³	0–24	25–34	35–44	45–54	55–64	65–74	75–84	85+	All	25–34	35–44	45–54	55–64	65–74	75–84	85+		
2002–2006	249	—	4	8	35	50	67	68	17	6.3	0.8	1.1	7.5	13.2	17.2	26.0	23.5	5.1	
2001–2005	260	—	3	8	33	59	72	70	15	6.8	0.6	1.2	7.3	15.7	17.7	28.0	25.5	5.4	
2000–2004	260	1	3	12	31	59	74	65	15	7.1	0.6	1.9	7.0	15.7	17.9	27.8	27.0	5.6	
Other Hispanic ⁴																			
2005–2009	891	7	21	102	240	243	142	106	29	3.5	0.4	2.4	8.3	16.0	20.2	27.7	28.8	6.0	
2004–2008	889	6	19	105	246	233	142	111	26	3.6	0.4	2.5	8.9	16.4	21.6	31.1	28.7	6.4	
2003–2007	868	7	23	99	254	220	133	111	20	3.7	0.5	2.5	9.8	17.1	21.2	36.6	25.9	6.7	
2002–2006	831	5	23	105	234	202	136	109	16	3.8	0.5	2.8	9.6	17.2	22.8	41.1	26.4	7.1	
2001–2005	832	3	19	116	243	189	147	99	15	4.0	0.4	3.2	10.9	17.5	27.0	42.1	27.1	7.7	
2000–2004	828	2	21	113	253	168	153	100	18	4.2	0.5	3.4	12.5	16.5	30.3	48.6	28.5	8.4	
Female																			
Mexican																			
2005–2009	2,680	13	27	115	360	595	750	647	173	3.8	0.2	1.2	5.3	15.4	35.7	53.5	42.5	7.7	
2004–2008	2,500	18	26	116	344	526	723	608	139	3.6	0.2	1.2	5.3	14.6	36.7	51.6	36.3	7.5	
2003–2007	2,411	17	27	118	338	484	721	577	129	3.6	0.2	1.3	5.5	14.2	38.8	49.8	36.0	7.6	
2002–2006	2,362	19	34	129	323	470	709	548	130	3.6	0.3	1.4	5.5	14.5	39.8	48.8	38.4	7.7	
2001–2005	2,295	21	32	136	302	464	712	508	120	3.6	0.3	1.6	5.4	15.1	41.4	48.8	37.2	7.9	
2000–2004	2,207	18	28	120	298	424	713	495	111	3.7	0.3	1.5	5.6	14.7	42.3	51.4	34.6	8.0	
Puerto Rican																			
2005–2009	419	1	7	18	57	94	123	89	30	4.1	0.5	1.3	4.7	11.9	27.1	38.0	26.8	5.8	
2004–2008	425	—	5	19	67	94	124	92	24	4.3	0.3	1.3	5.7	12.1	27.1	41.6	26.1	6.1	
2003–2007	434	—	8	17	69	96	130	94	20	4.4	0.5	1.2	6.2	12.9	28.8	45.0	26.2	6.5	
2002–2006	429	1	7	21	71	94	129	90	16	4.5	0.5	1.5	6.6	13.3	29.1	47.9	23.7	6.8	
2001–2005	430	1	7	29	78	89	124	88	14	4.6	0.5	2.1	7.5	13.3	28.3	50.5	22.9	7.1	
2000–2004	439	1	7	31	75	95	125	88	17	4.9	0.5	2.3	7.6	14.8	29.7	51.1	30.0	7.5	
Cuban																			
2005–2009	217	—	—	1	12	22	56	91	35	5.3	—	0.2	2.5	5.3	15.1	27.3	25.6	3.5	
2004–2008	204	—	—	1	13	17	53	89	31	5.1	—	0.2	2.9	4.1	14.6	27.5	21.3	3.3	
2003–2007	193	—	—	1	12	17	52	83	28	4.9	—	0.2	2.8	4.0	13.8	27.2	17.9	3.2	
2002–2006	207	—	—	2	13	18	57	91	26	5.4	—	0.3	3.2	4.0	14.2	30.8	15.8	3.4	
2001–2005	216	—	—	3	14	17	63	95	24	5.9	—	0.5	3.4	3.8	15.2	32.6	14.7	3.6	
2000–2004	215	—	—	5	11	18	65	92	24	6.1	—	1.0	2.6	4.1	15.5	30.9	15.5	3.5	
Other Hispanic ⁴																			
2005–2009	848	2	5	37	111	153	216	256	68	3.5	0.1	0.9	3.5	8.0	20.8	44.3	26.5	5.1	
2004–2008	808	2	4	38	103	140	225	231	65	3.4	0.1	1.0	3.4	7.8	22.1	43.7	29.4	5.2	

Table 6. Age-specific number of deaths, 5-year annual moving average of age-specific death rates, and age-adjusted death rates¹ from liver cirrhosis with and without mention of alcohol, by Hispanic subgroup and sex, United States, 2000–2009. (Continued)

Liver cirrhosis Subcategory, Hispanic subgroup, ² and sex	Number of deaths, by age group									Deaths per 100,000 population, by age group								Age-adjusted deaths per 100,000 population
	All ³	0–24	25–34	35–44	45–54	55–64	65–74	75–84	85+	All	25–34	35–44	45–54	55–64	65–74	75–84	85+	
2003–2007	744	2	3	38	93	131	202	220	55	3.3	0.1	1.0	3.3	8.0	20.7	47.3	31.0	5.3
2002–2006	716	5	6	41	83	127	210	188	56	3.3	0.2	1.1	3.0	8.7	23.2	45.3	40.8	5.6
2001–2005	658	5	5	42	74	117	201	161	53	3.2	0.1	1.2	2.9	8.8	24.0	40.8	52.3	5.6
2000–2004	656	6	8	43	70	123	204	154	48	3.3	0.2	1.2	3.0	9.7	25.8	39.8	49.0	5.8

— No deaths in this table cell.

¹ Rates per 100,000 population computed by the direct standardization method, using the Year 2000 total population of the United States as the standard age distribution.

² Includes all races, and excludes deaths for which Hispanic origin was unknown.

³ Includes deaths for which age of decedent was unknown; age-specific numbers of deaths may not sum to total.

⁴ Includes Central and South American and Other and unknown Hispanic subgroups.