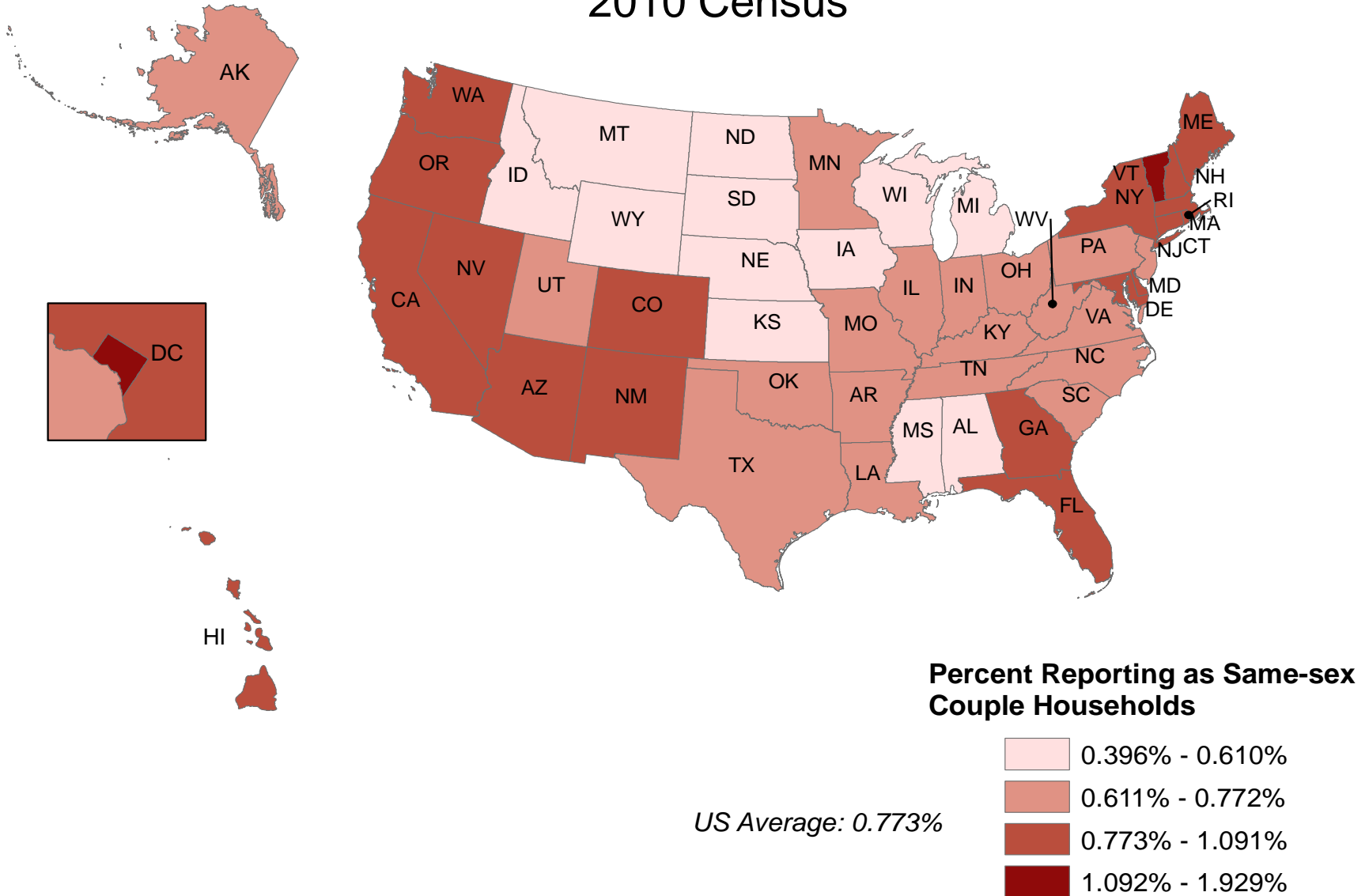
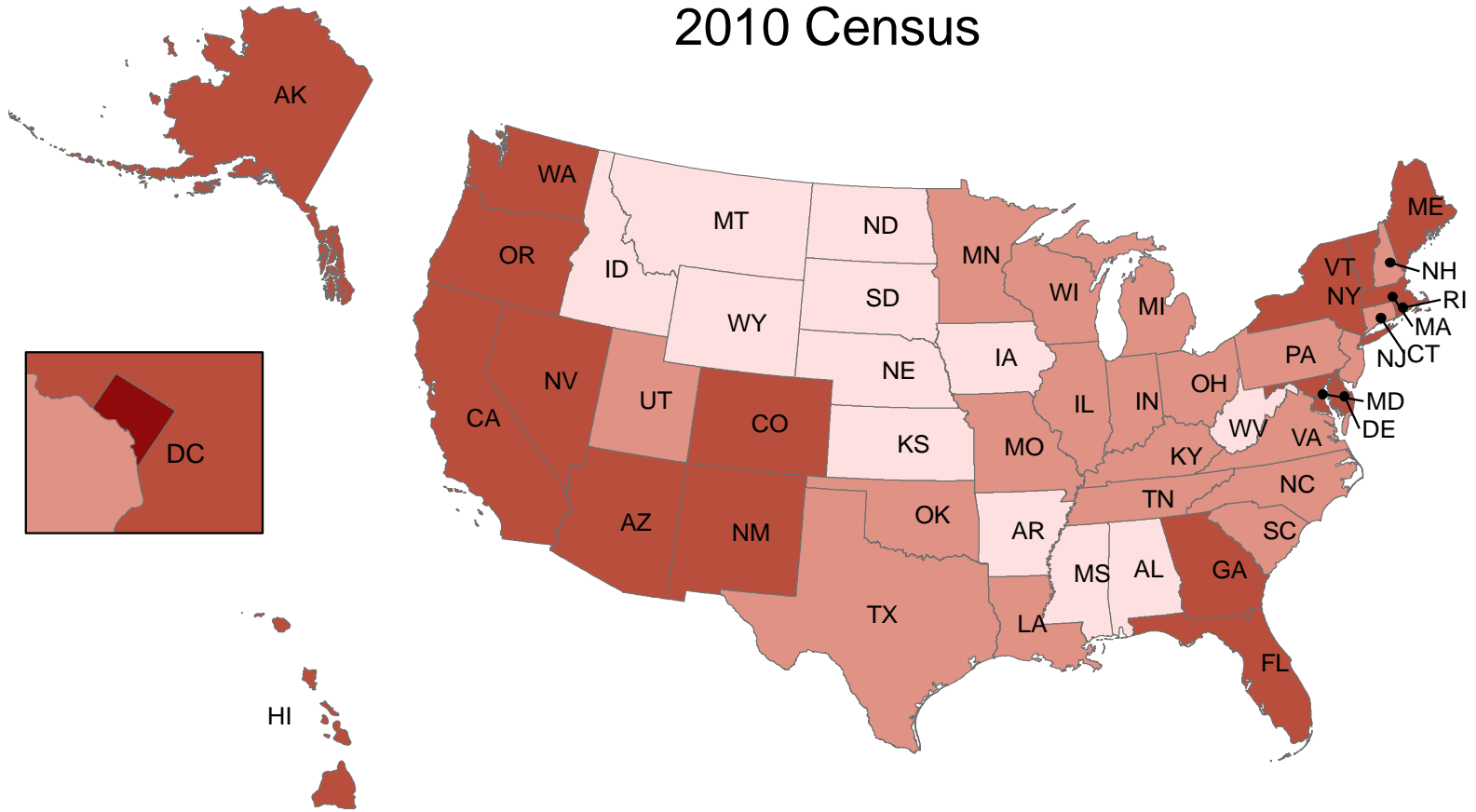


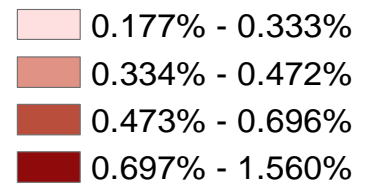
Map 1a. Percent of All Households Reporting as Same-sex Couple Households:
2010 Census



Map 1b. Percent of All Households Reporting as Same-sex Unmarried Partner Households: 2010 Census

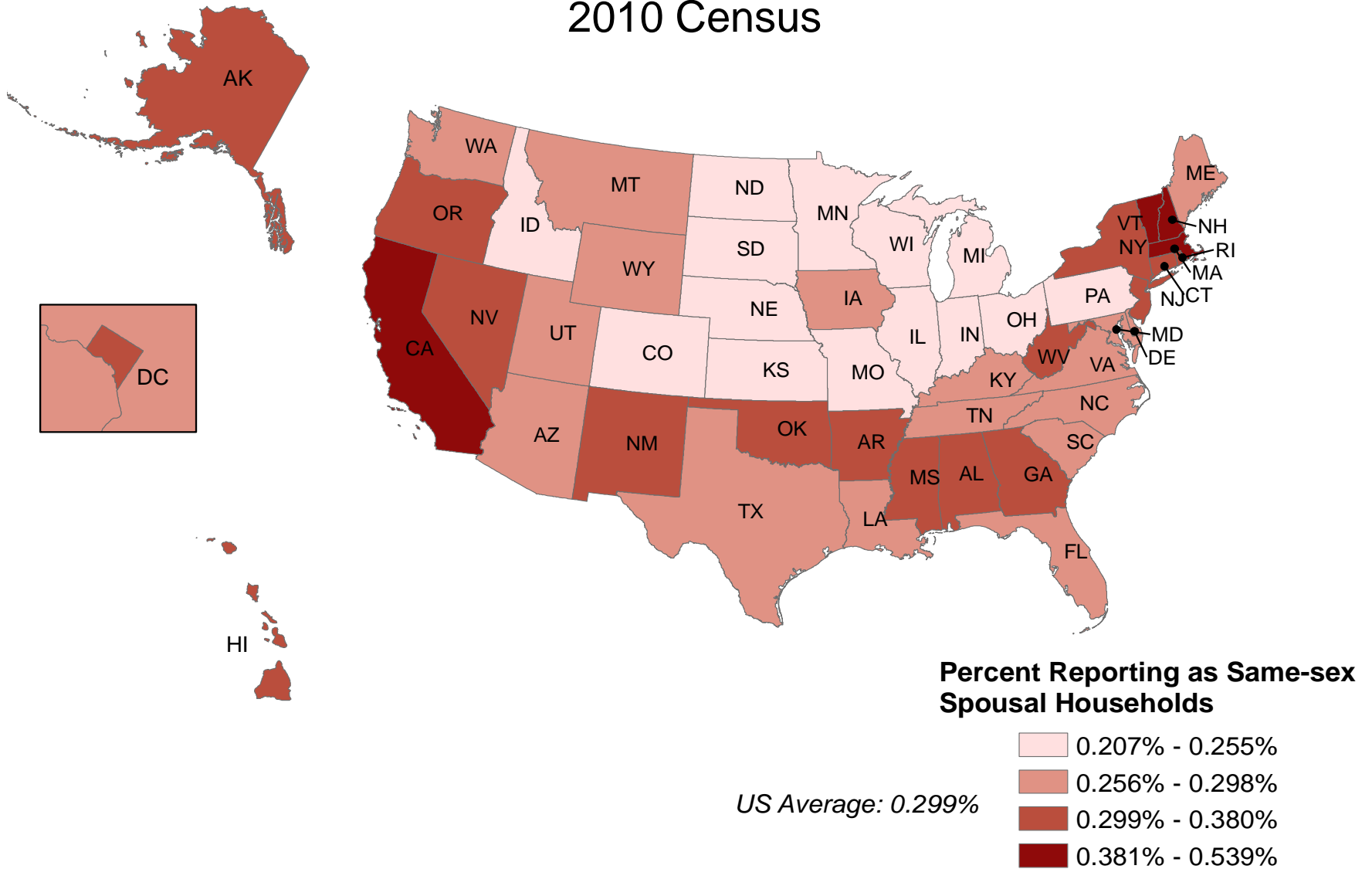


Percentage Reporting as Same-sex Unmarried Partner Households

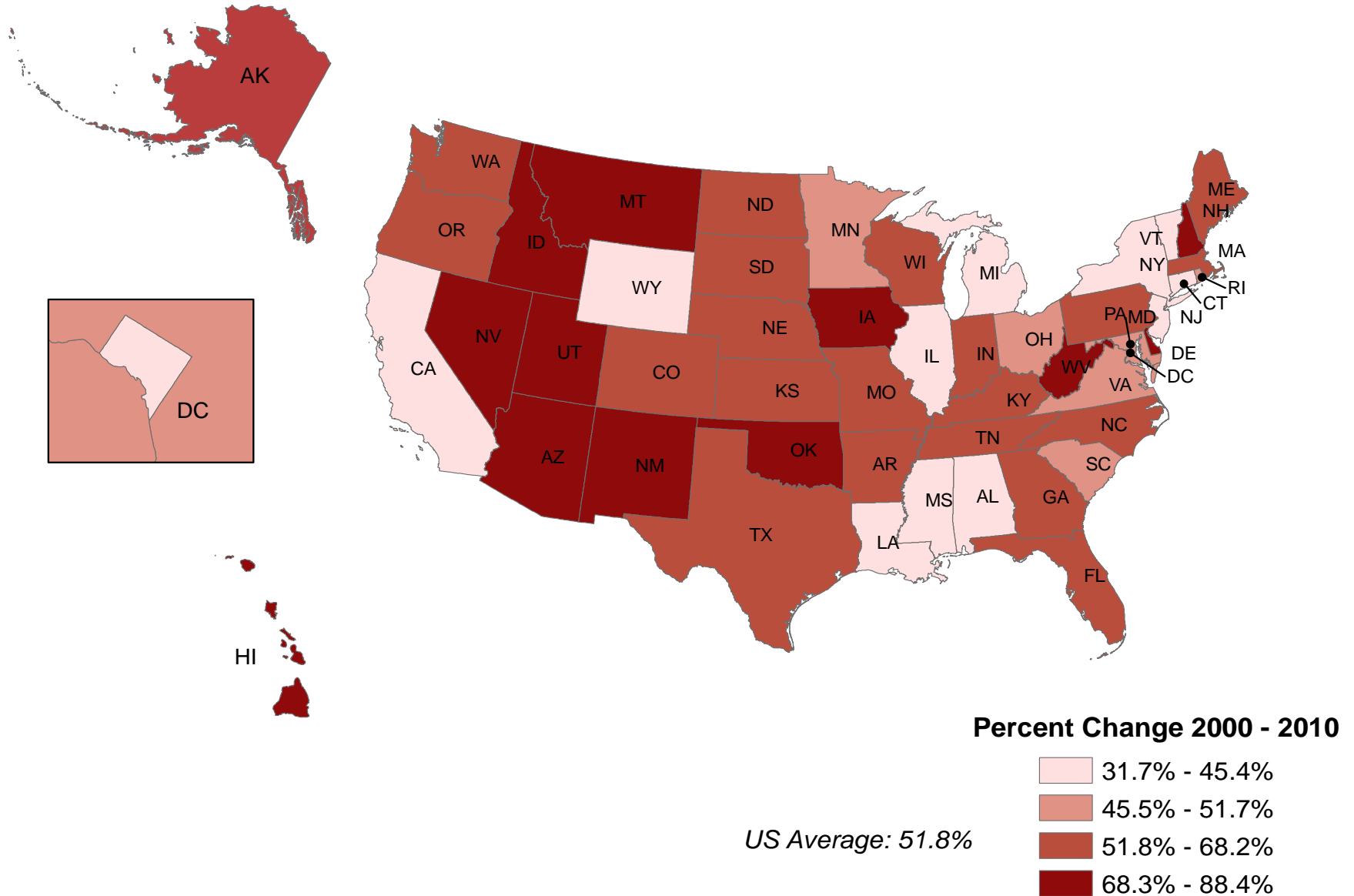


US Average: 0.473%

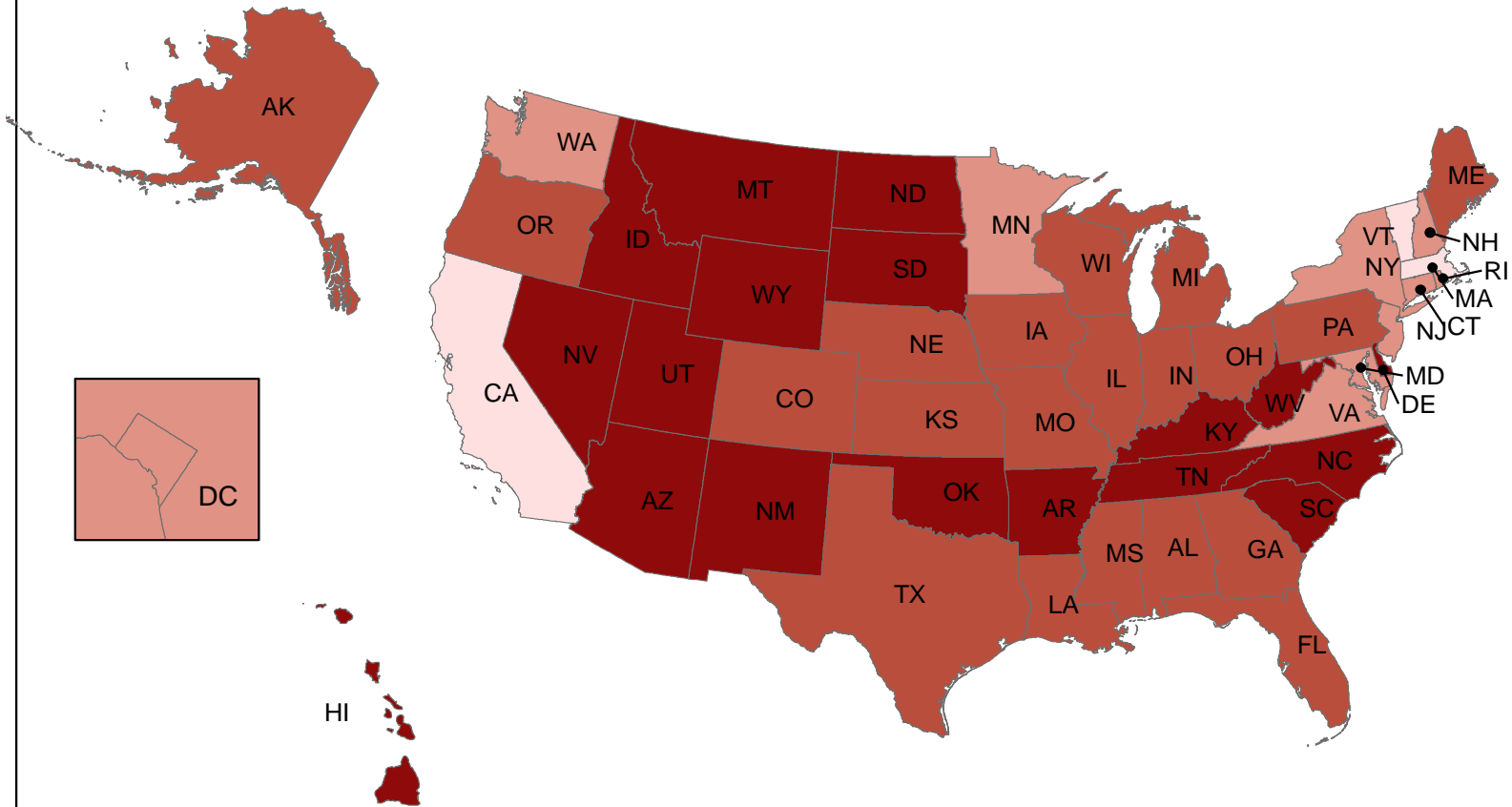
Map 1c. Percent of All Households Reporting as Same-sex Spousal Households: 2010 Census



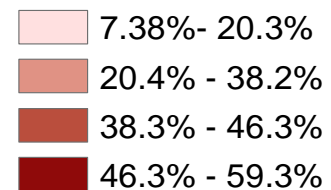
Map 2a. Percent Growth in All Same-sex Couple Households: Census 2000 – 2010



Map 2b. Percent Growth in Same-sex Unmarried Partner Households: Census 2000 - 2010



Percent Change 2000 - 2010



US Average: 38.3%

Map 2c. Percent Growth in Same-sex Spousal Households: Census 2000 - 2010

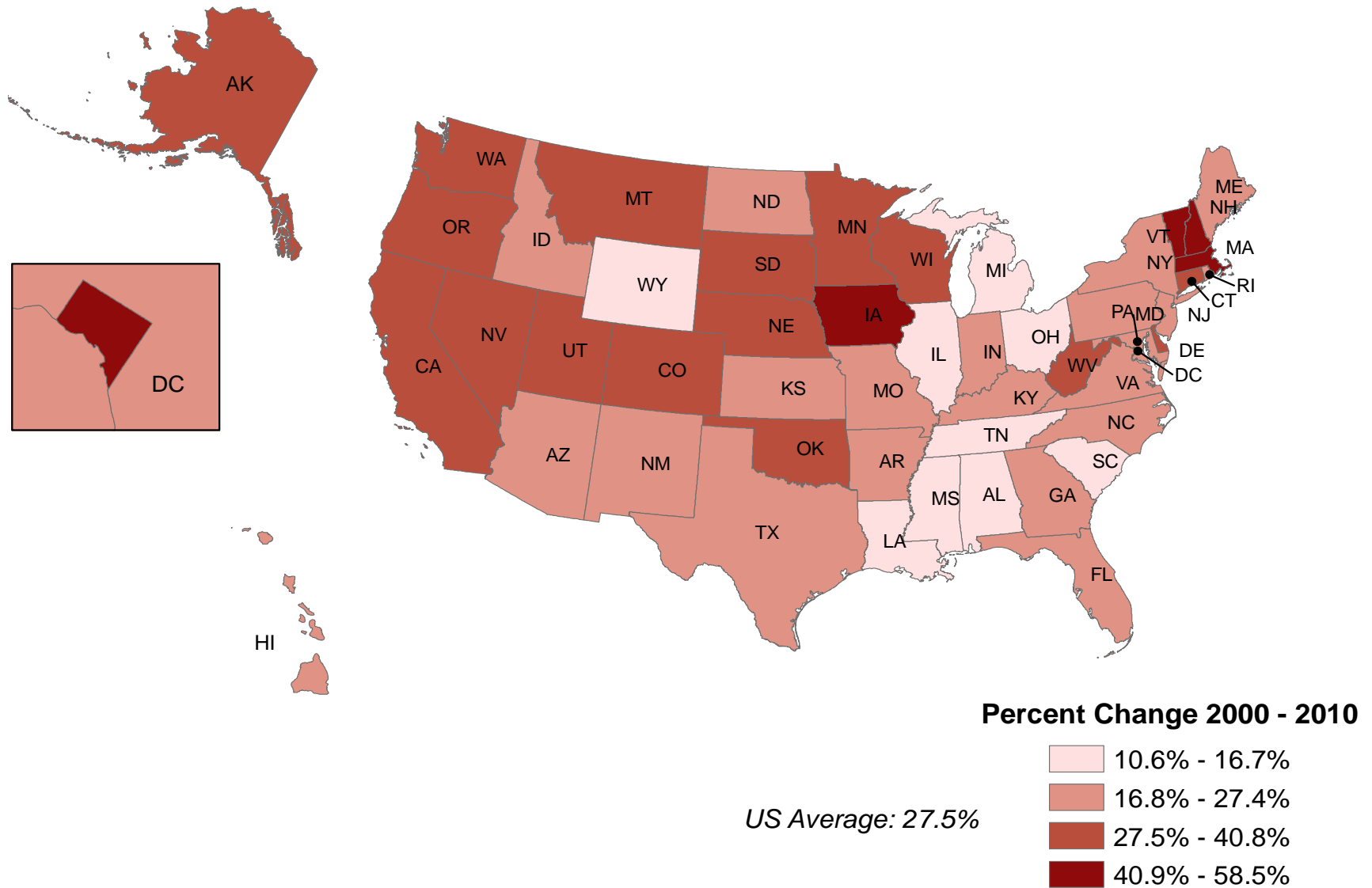


Figure 1. Plot of Percent Increase in Same-sex Unmarried Partner Households vs. Same-sex Spousal Households, by State: 2010 Census

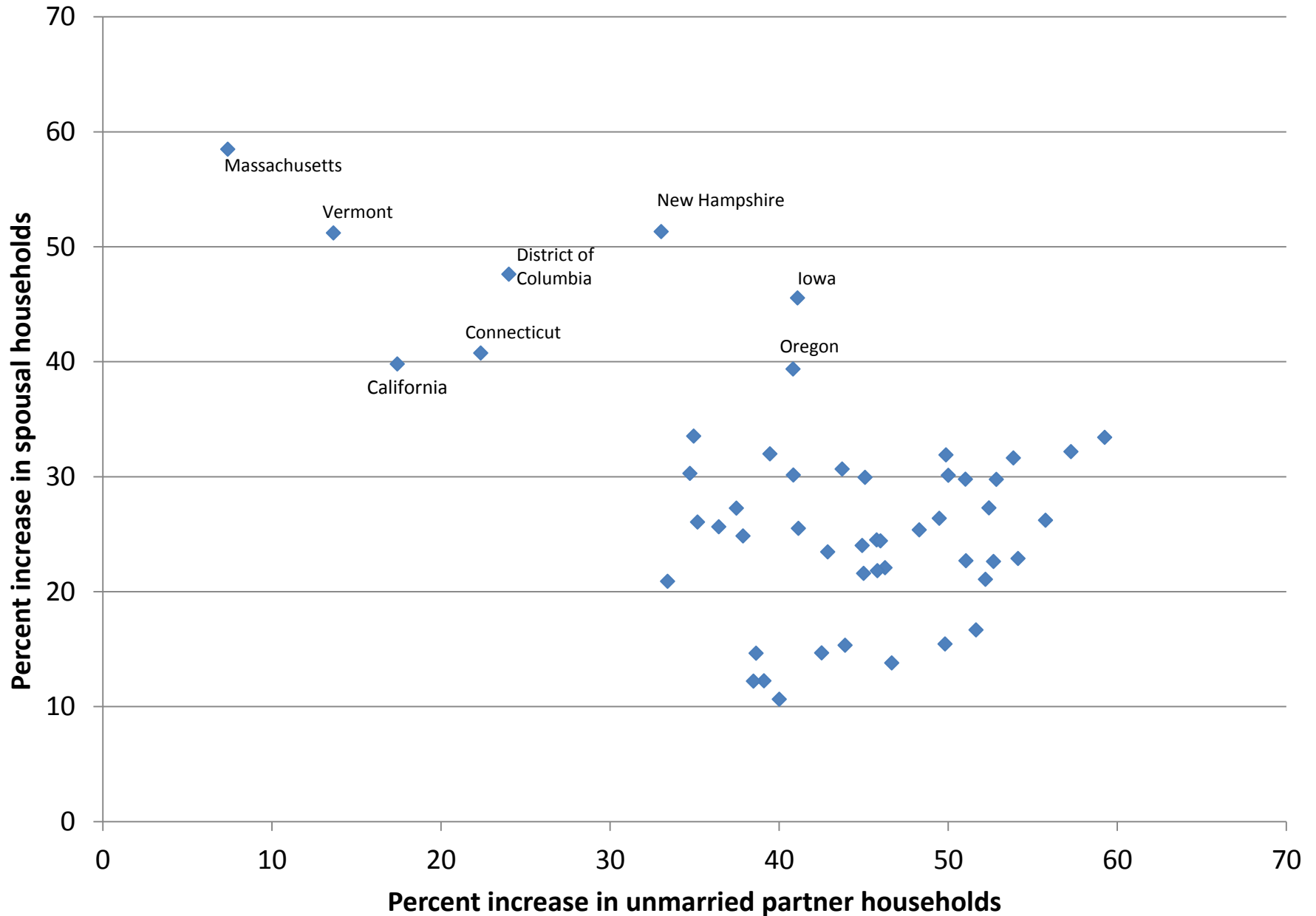
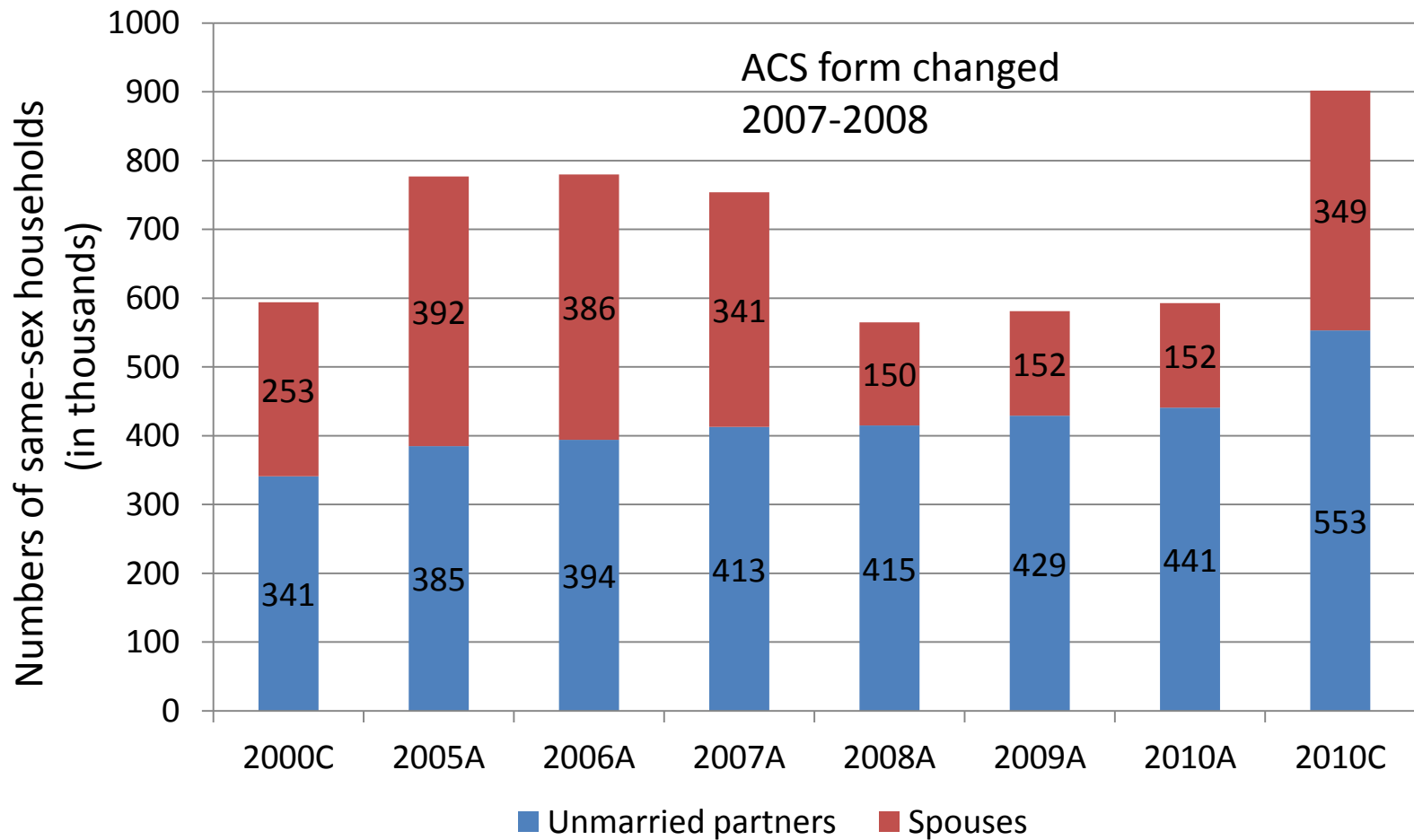


Figure 2. Same-sex Couple Households: 2000 and 2010 Census and ACS Estimated Numbers, 2005-2010

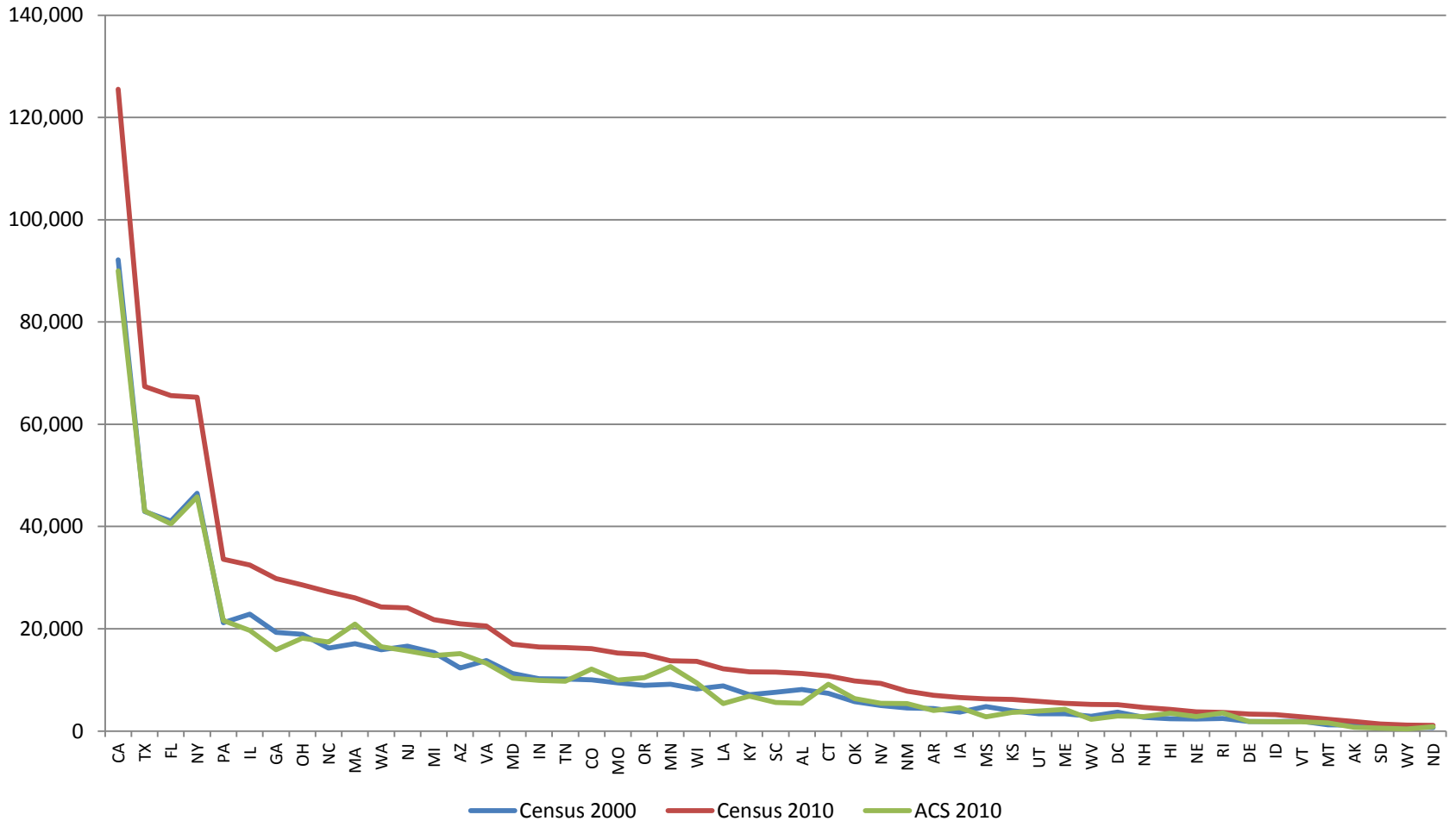


C-Census A-American Community Survey

Figure 3. Same-sex Couple Households: 2000 and 2010

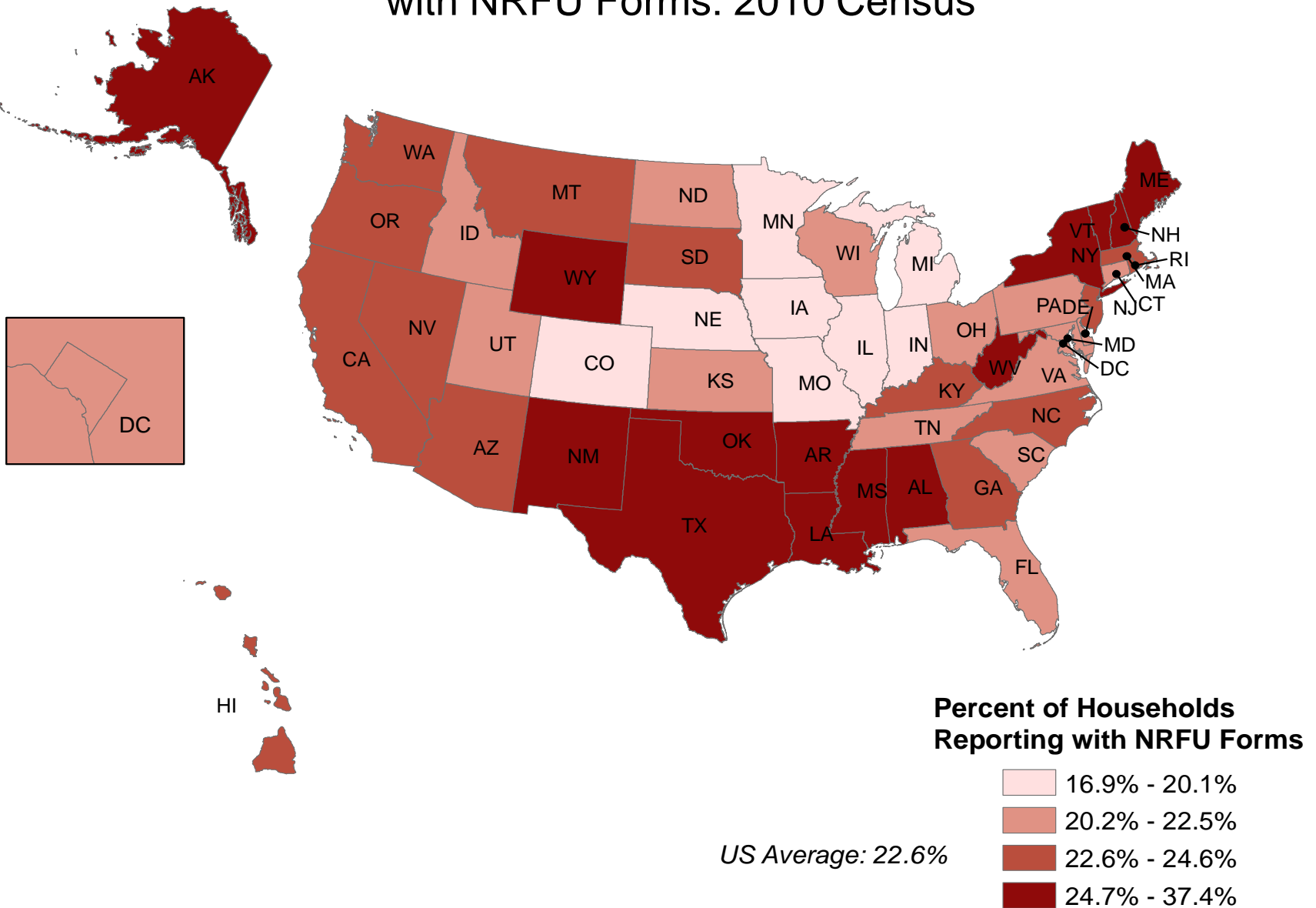
Same-sex couple households

Census and 2010 ACS Estimated Numbers by State

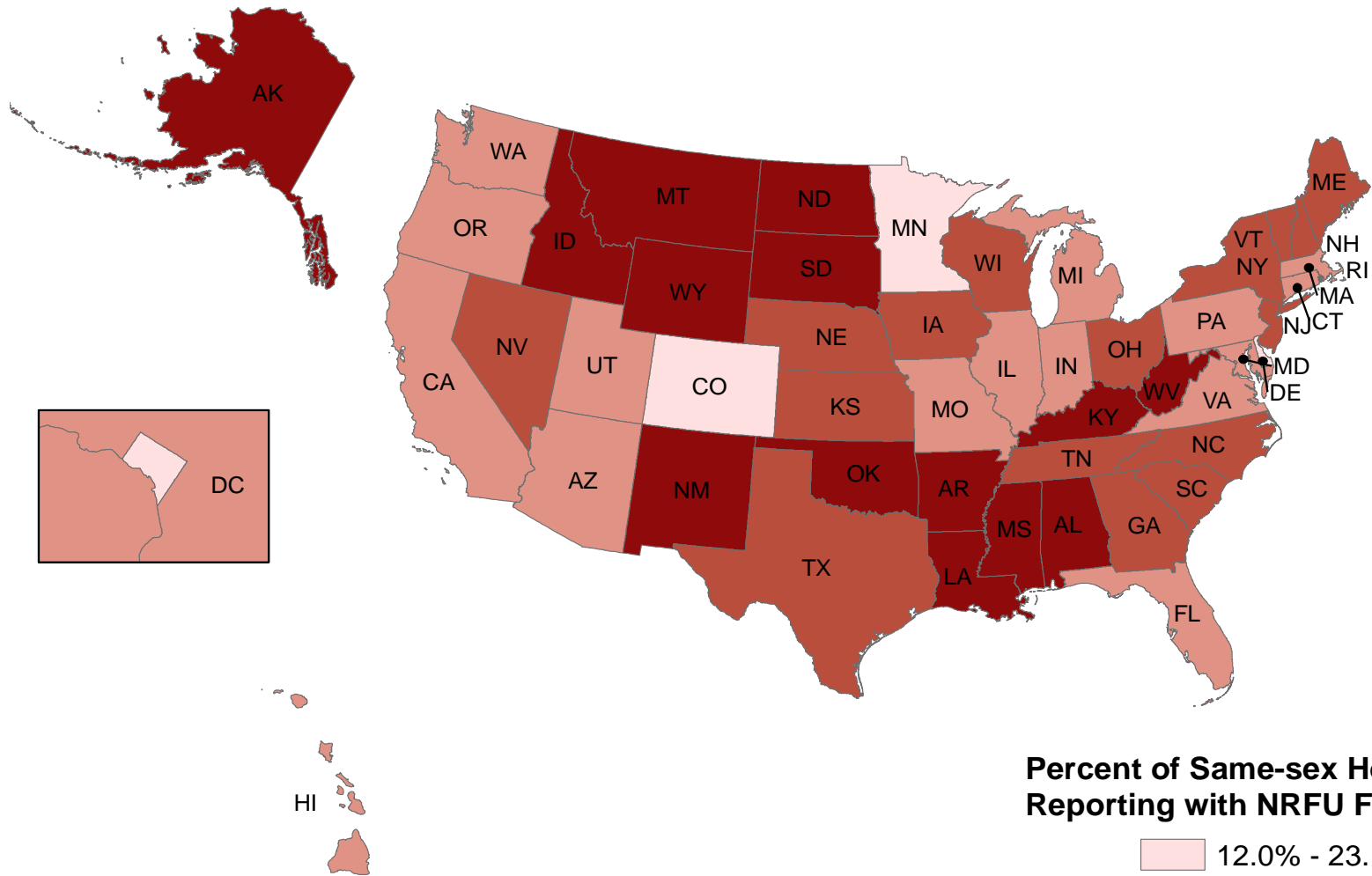


Note: States ordered from highest to lowest based on Census 2010 numbers.

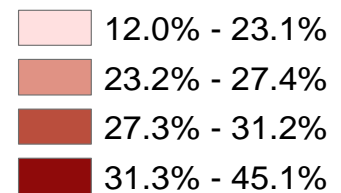
Map 3a. Percent of Households Reporting with NRFU Forms: 2010 Census



Map 3a. Percent of Same-sex Households Reporting with NRFU Forms: 2010 Census

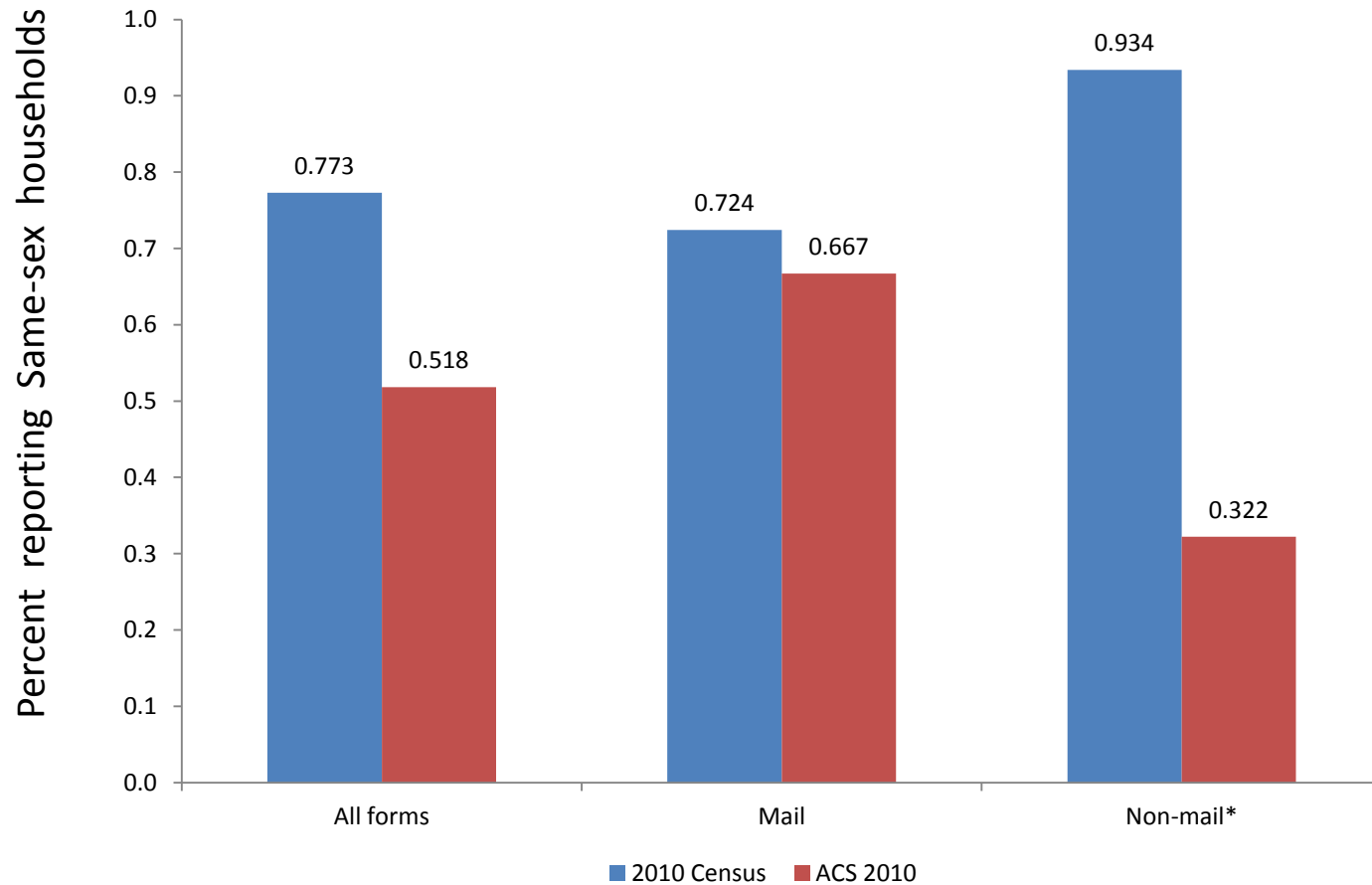


Percent of Same-sex Households Reporting with NRFU Forms



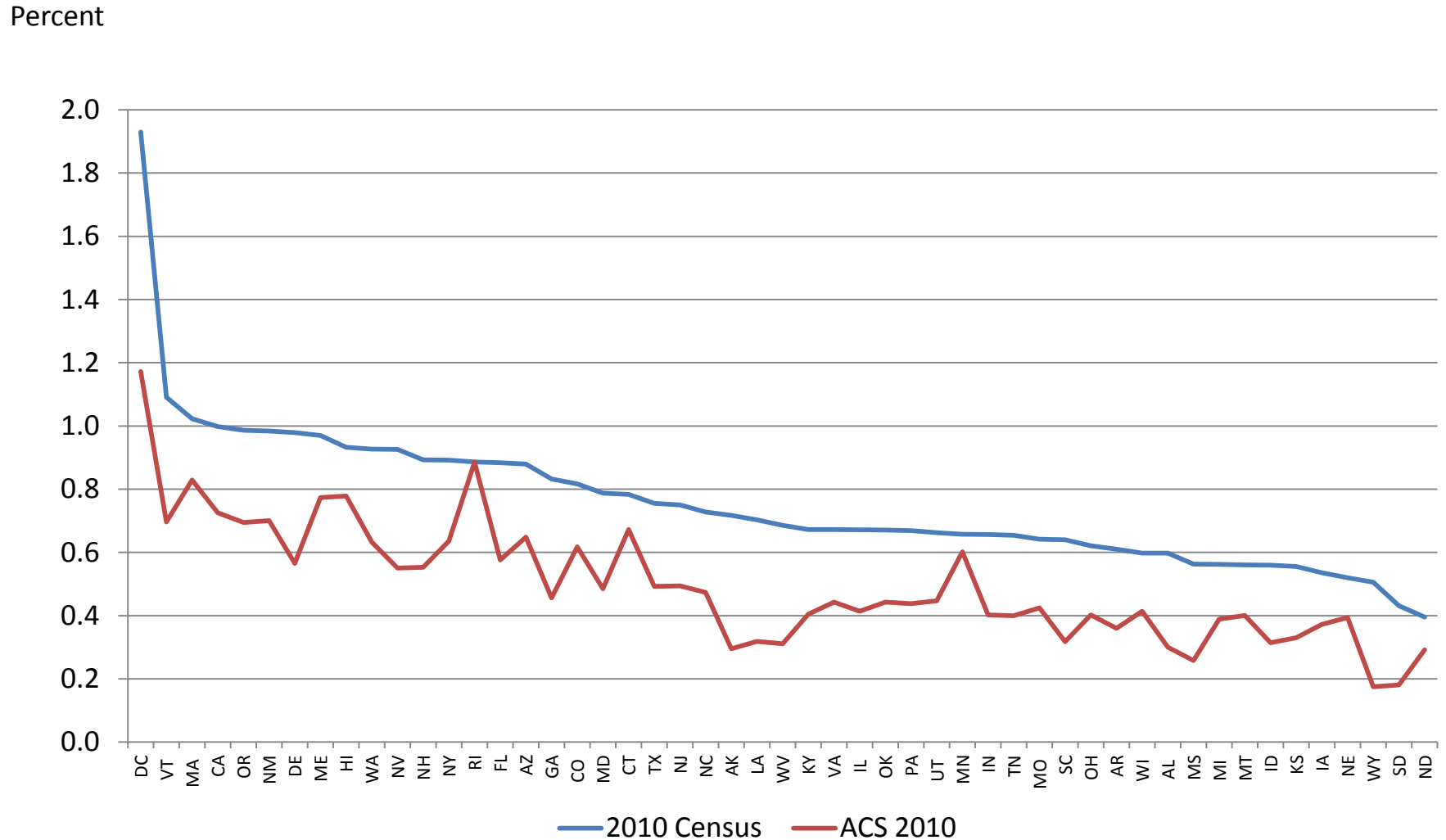
US Average: 27.3%

Figure 4. Percent of Households Reporting as Same-sex Couple Households by Form Type: 2010 Census and 2010 ACS Estimates



•NRFU forms for 2010 Census and CATI/CAPI forms for ACS 2010.

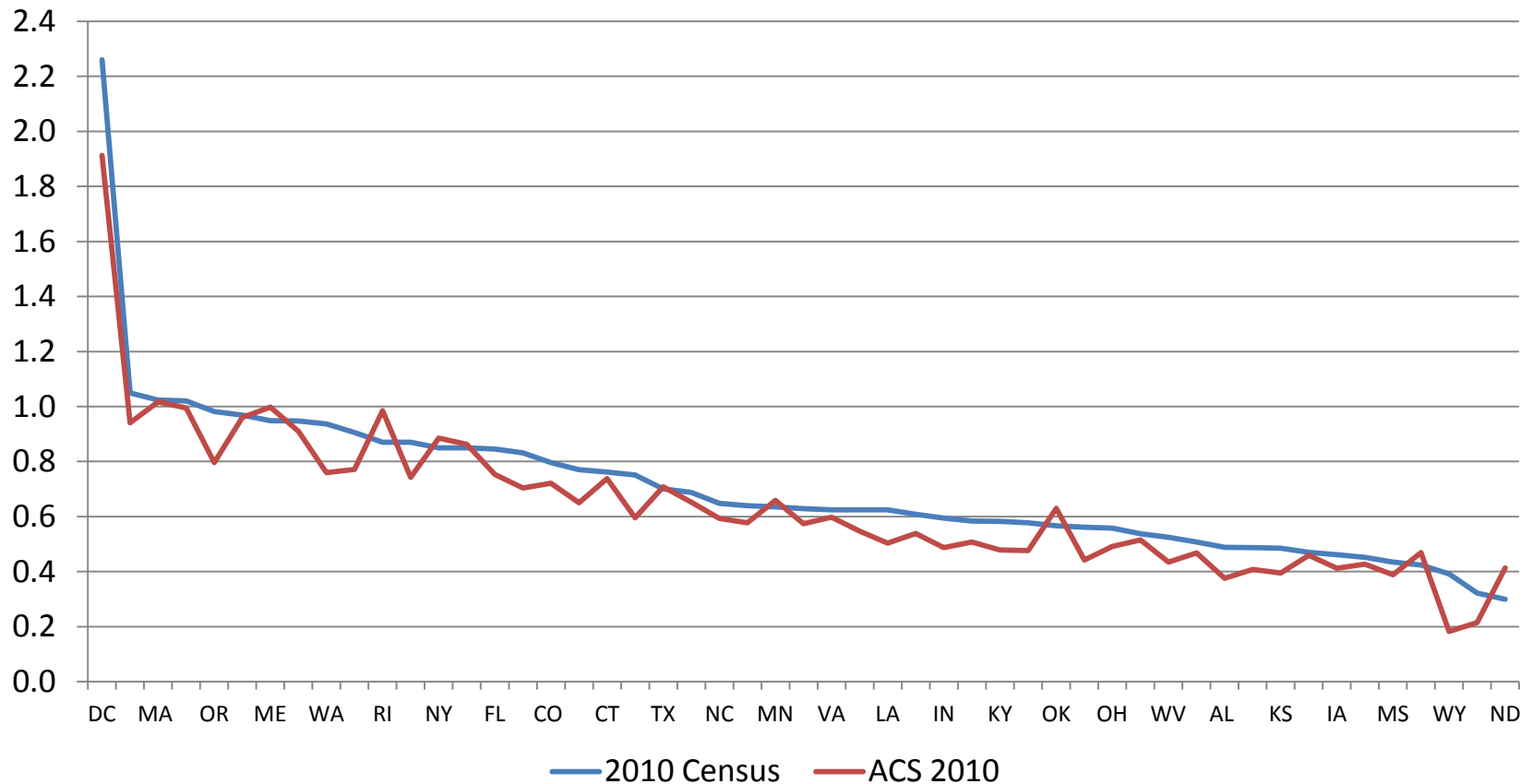
Figure 5a. Percent of All Households Reporting as Same-sex Couple Households, by State: 2010 Census and 2010 ACS Estimates



Note: States ordered from highest to lowest based on 2010 Census percents.

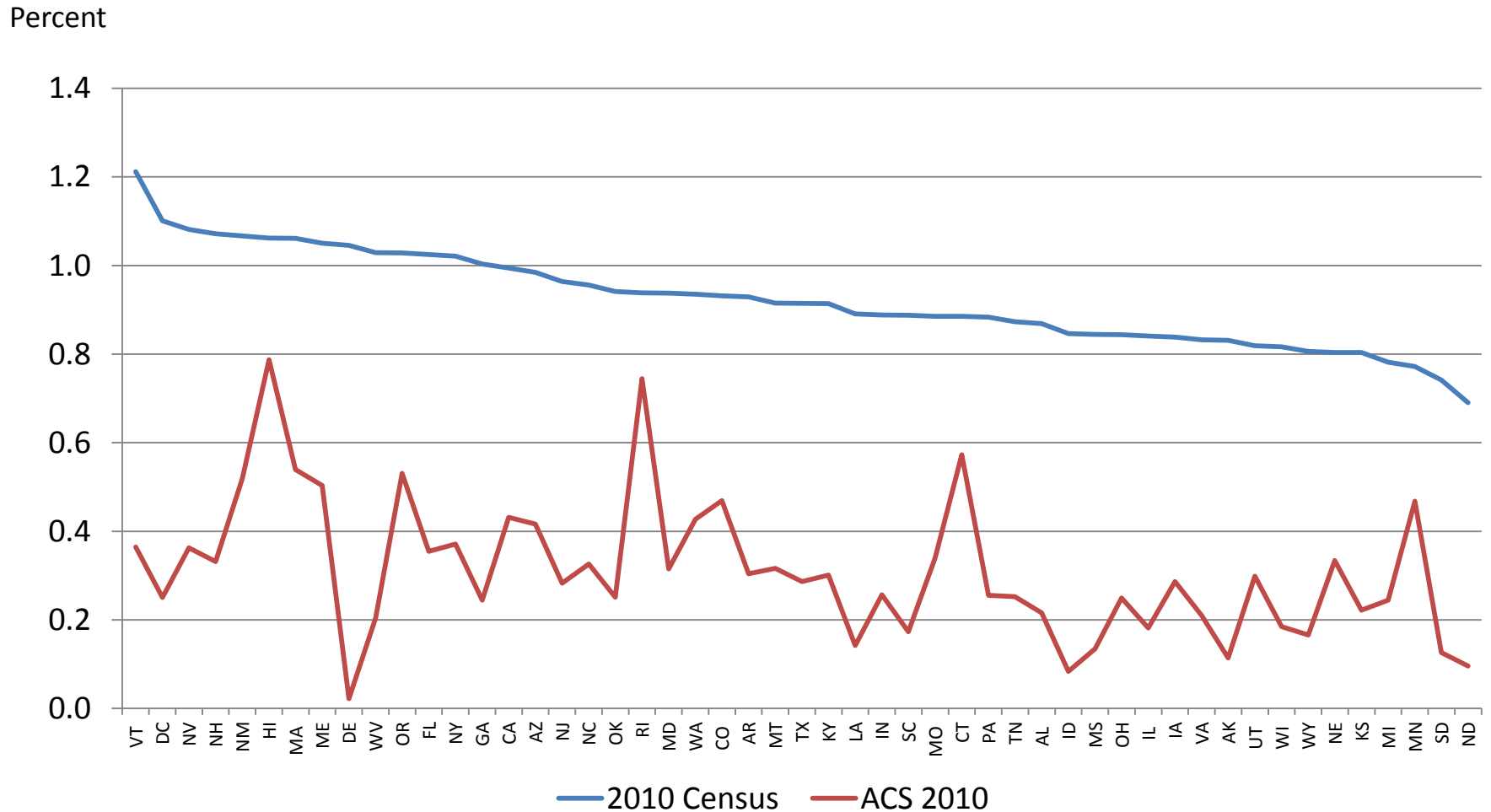
Figure 5b. Percent of Mail Return Households Reporting As Same-sex Couple Households by State: 2010 Census and 2010 ACS Estimates

Percent



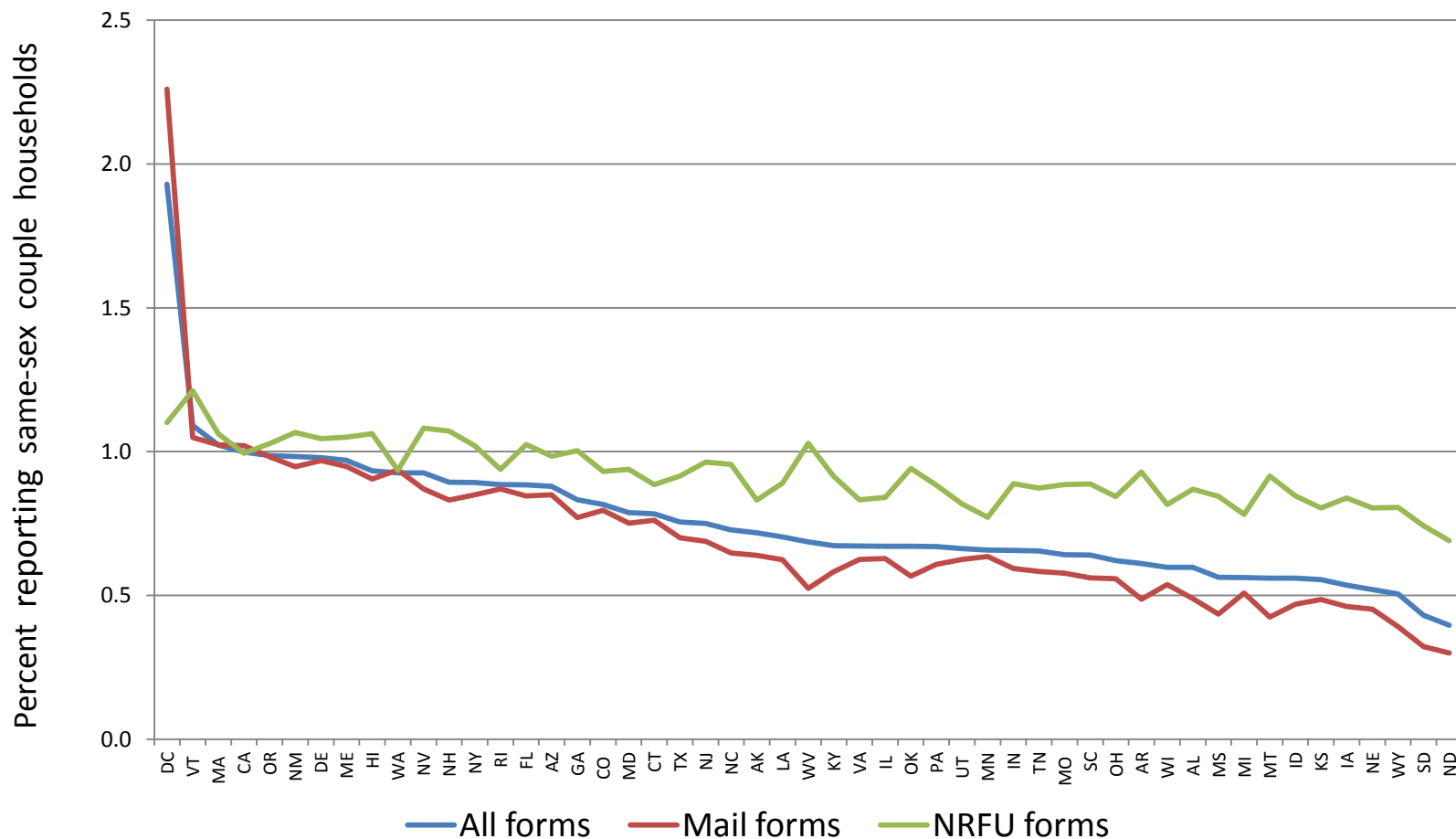
Note: States ordered from highest to lowest based on 2010 Census percents.

Figure 5c. Percent of Non-Mail Return Households Reporting As Same-sex Couple Households by State: 2010 Census and 2010 ACS Estimates



Note: States ordered from highest to lowest based on 2010 Census percents.

Figure 6. Percent of Households Reporting as Same-sex Couple Households by Form Type: 2010 Census



Note: States ordered from highest to lowest based on 2010 Census percents for all forms.

Figure 7. Box Plot of Inconsistent Name-Sex Reporting Per 100 Opposite-sex Unmarried Partners and of Opposite-sex Spouses for 50 States and the District of Columbia, 2010 Census

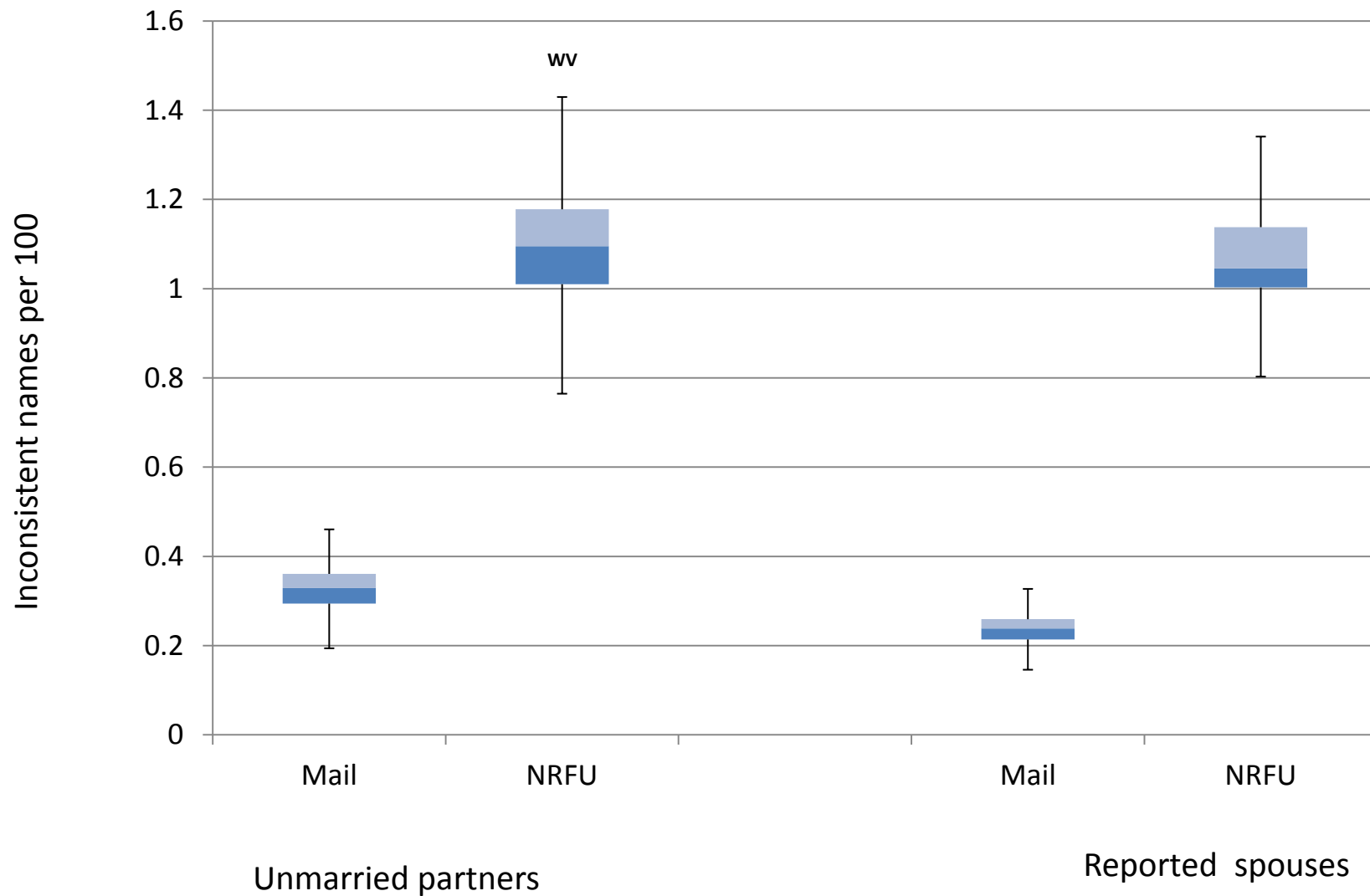


Figure 8. Percent of Same-sex Couples with Inconsistent Name-Sex Reporting, by Form Type: 2010 Census

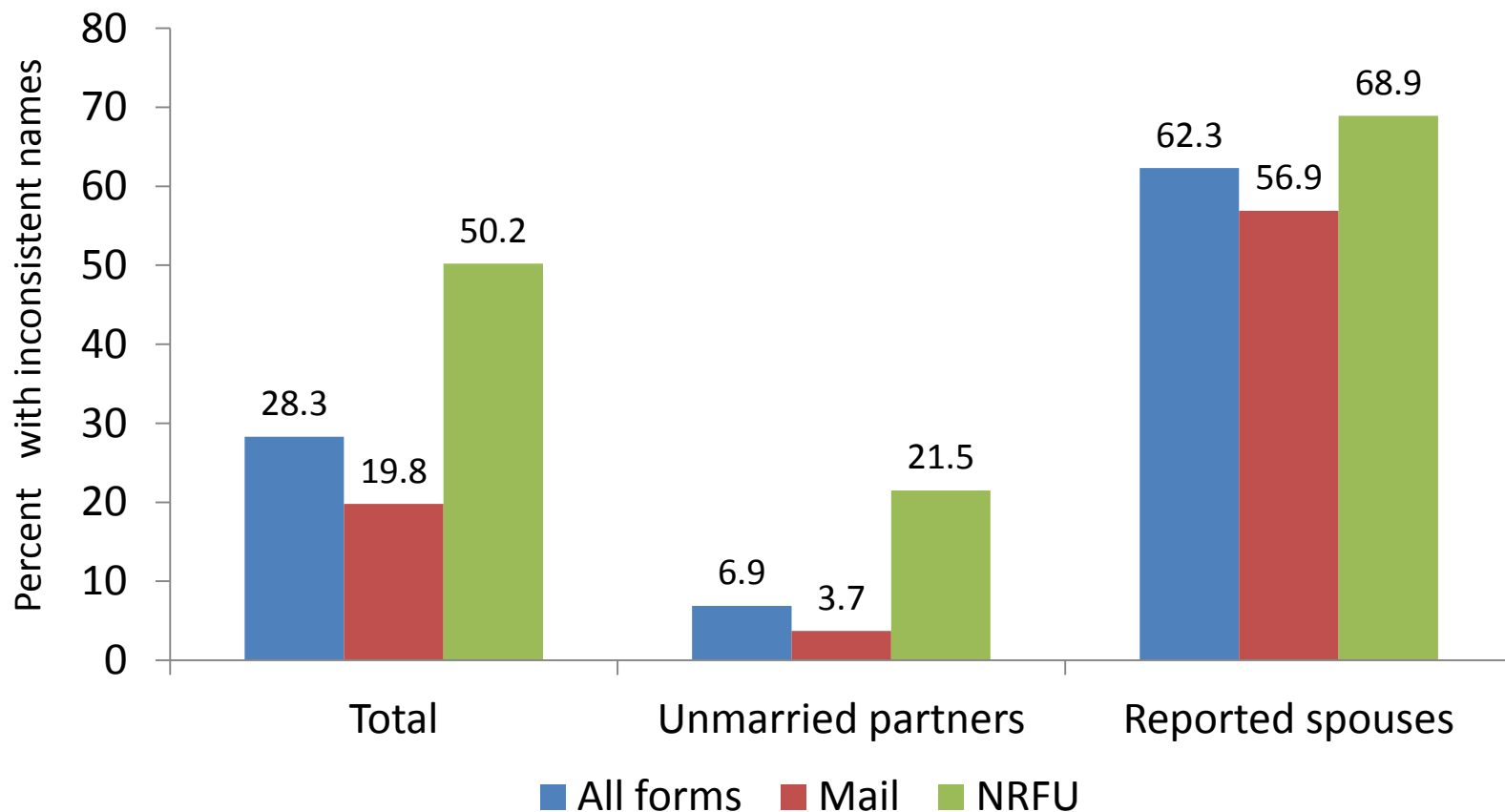
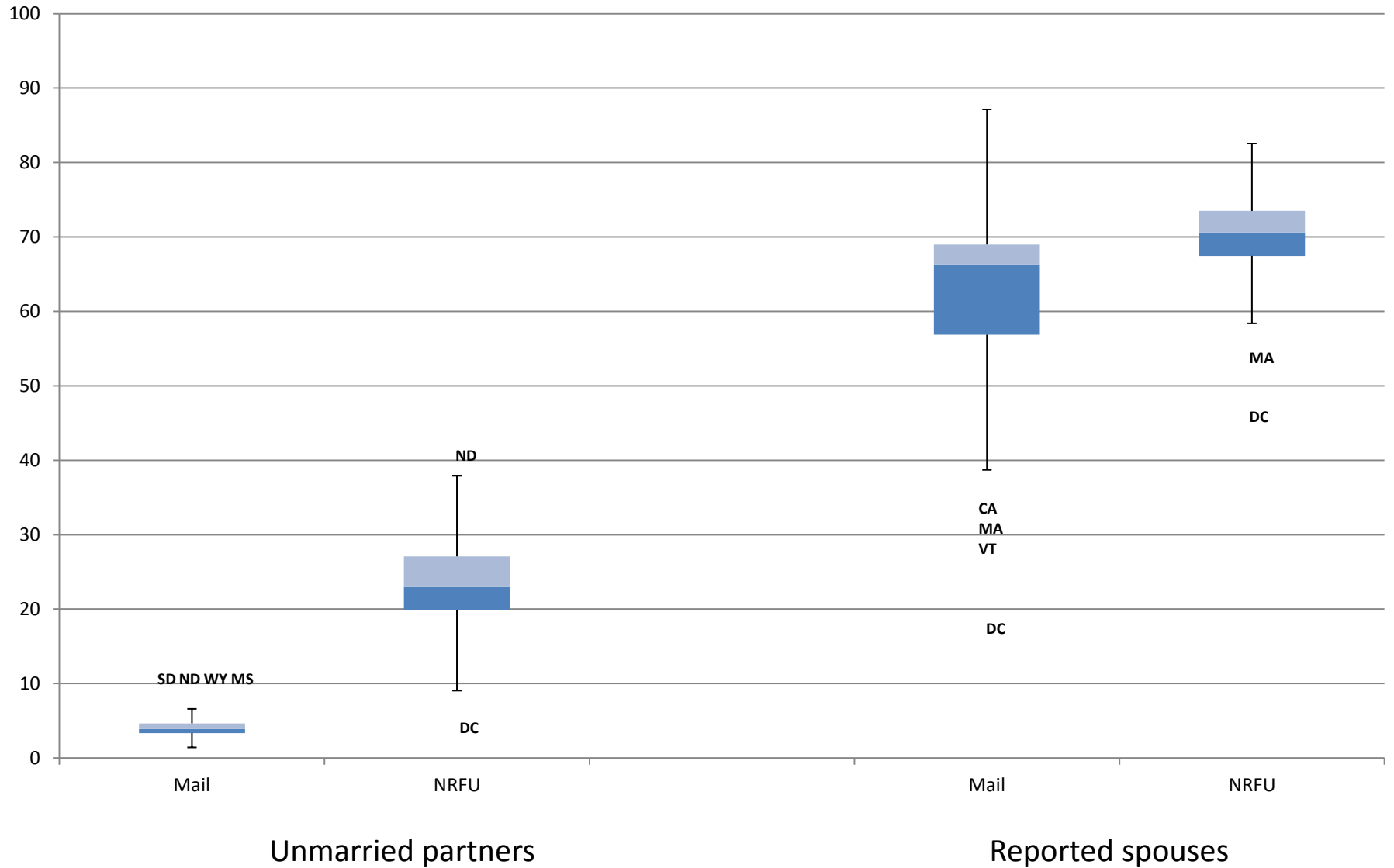
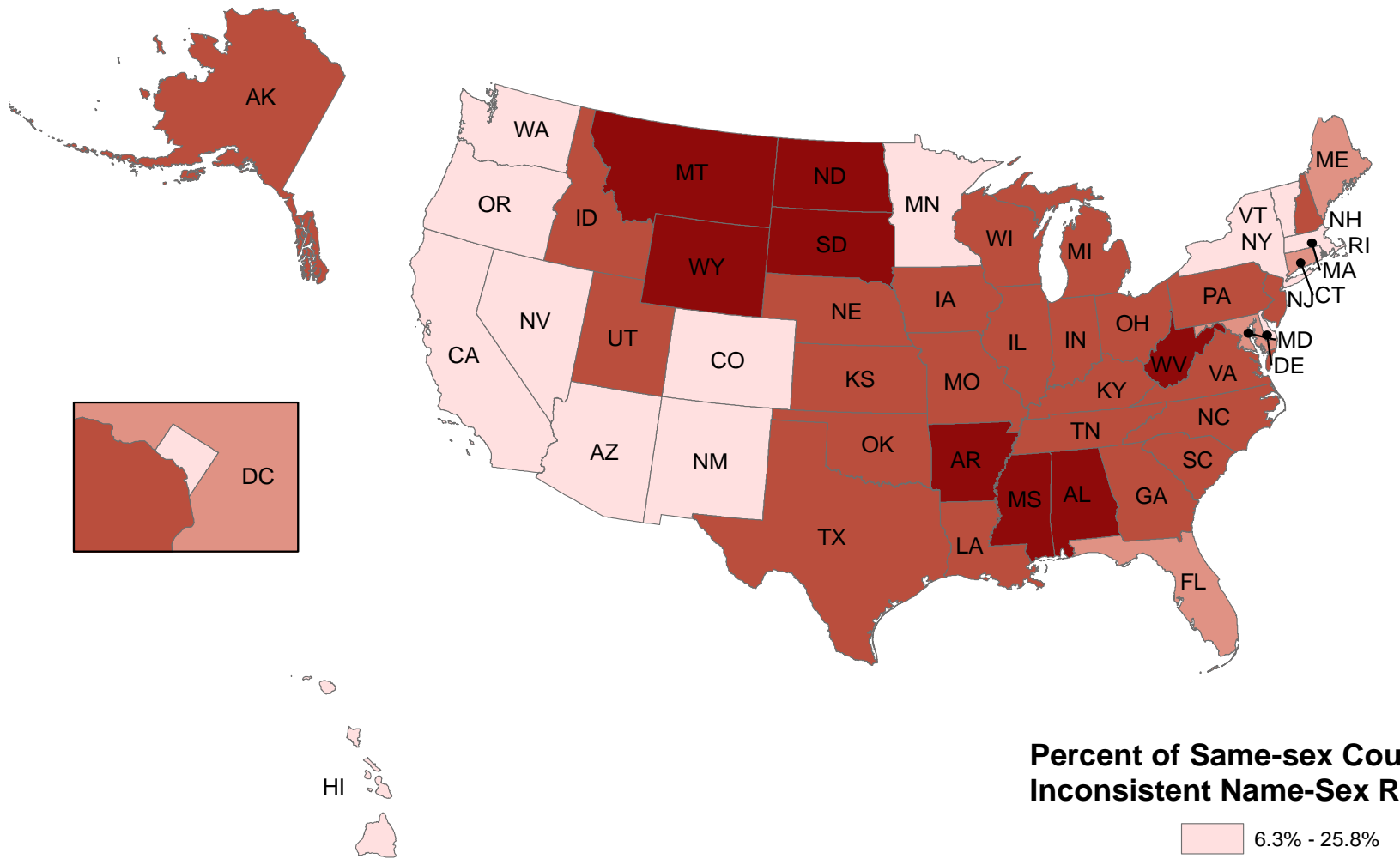


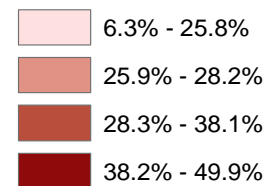
Figure 9. Box Plot of Percent of Same-sex Couples with Inconsistent Name-Sex Reporting: 2010 Census



Map 4 Percent of Same-sex Couples with Inconsistent Name-Sex Reporting: 2010 Census



Percent of Same-sex Couples with Inconsistent Name-Sex Reporting



US Average: 28.3%

Figure 10. Plot of Percent of Same-sex Couple Households Using NRFU Forms vs. Percent with Inconsistent Name-Sex Reporting, by State: 2010 Census

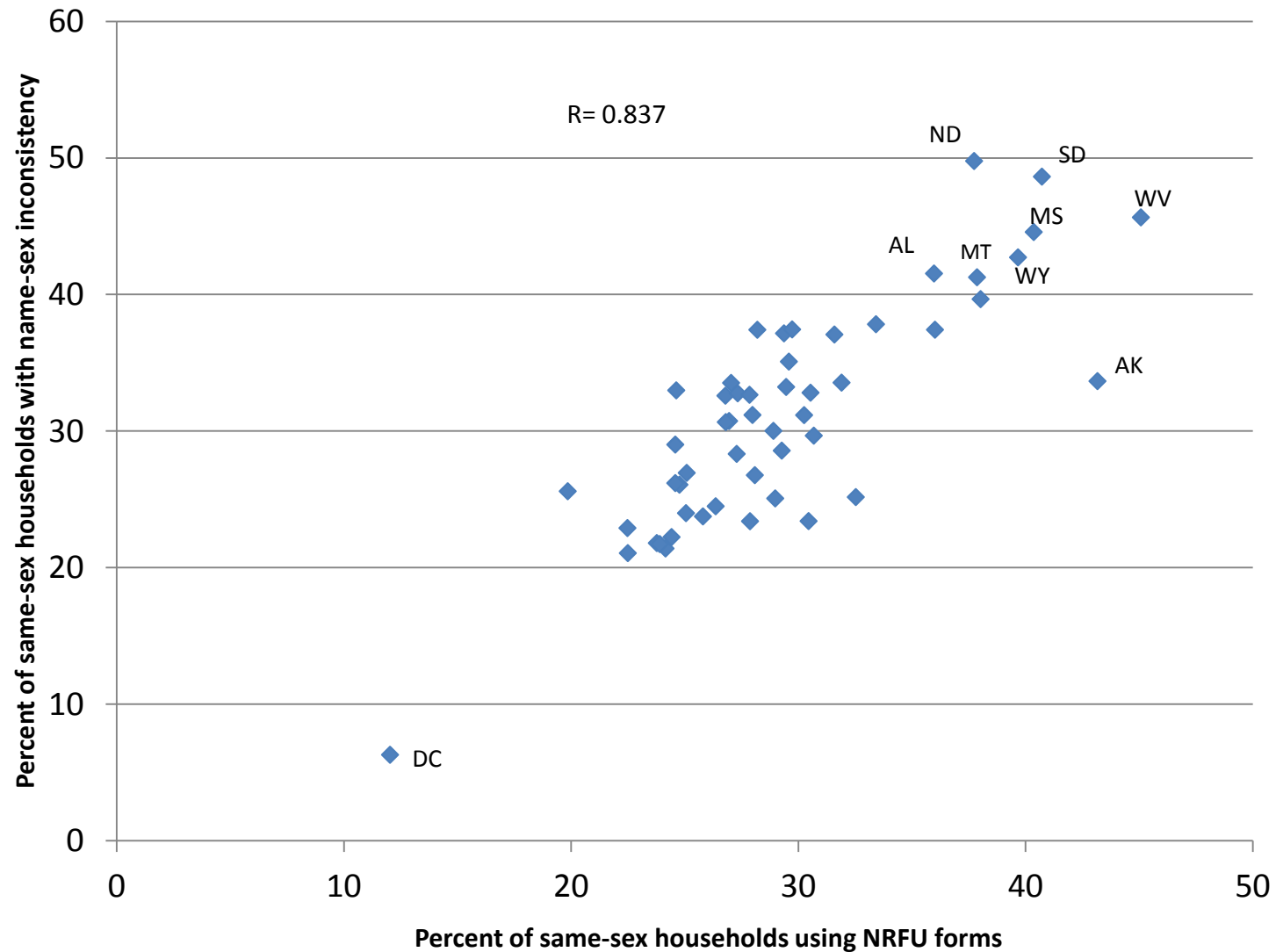


Figure 11a. Percent of Households Reporting as Same-sex Couple Households by Household Type: 2010 Census and 2010 ACS Estimates

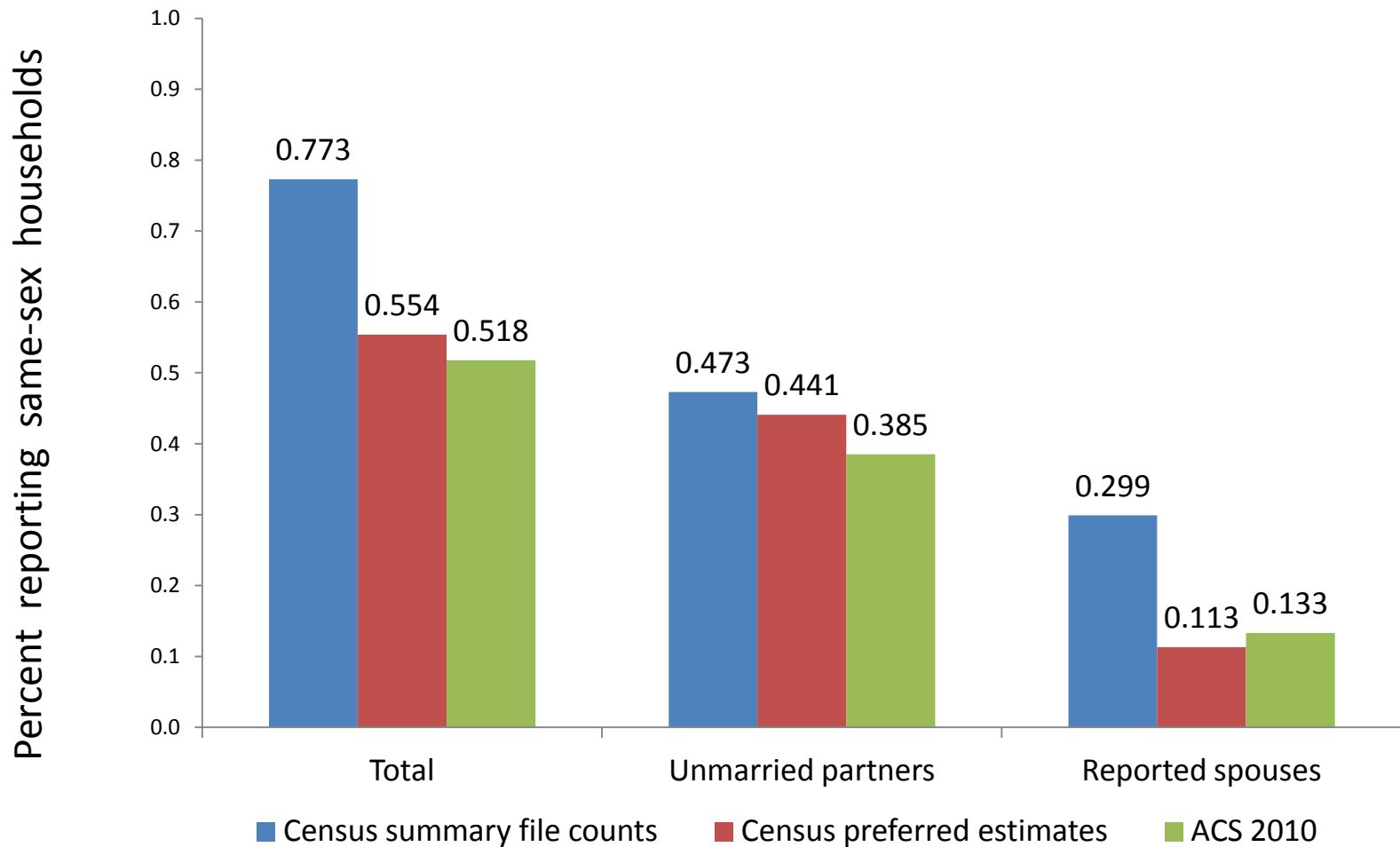
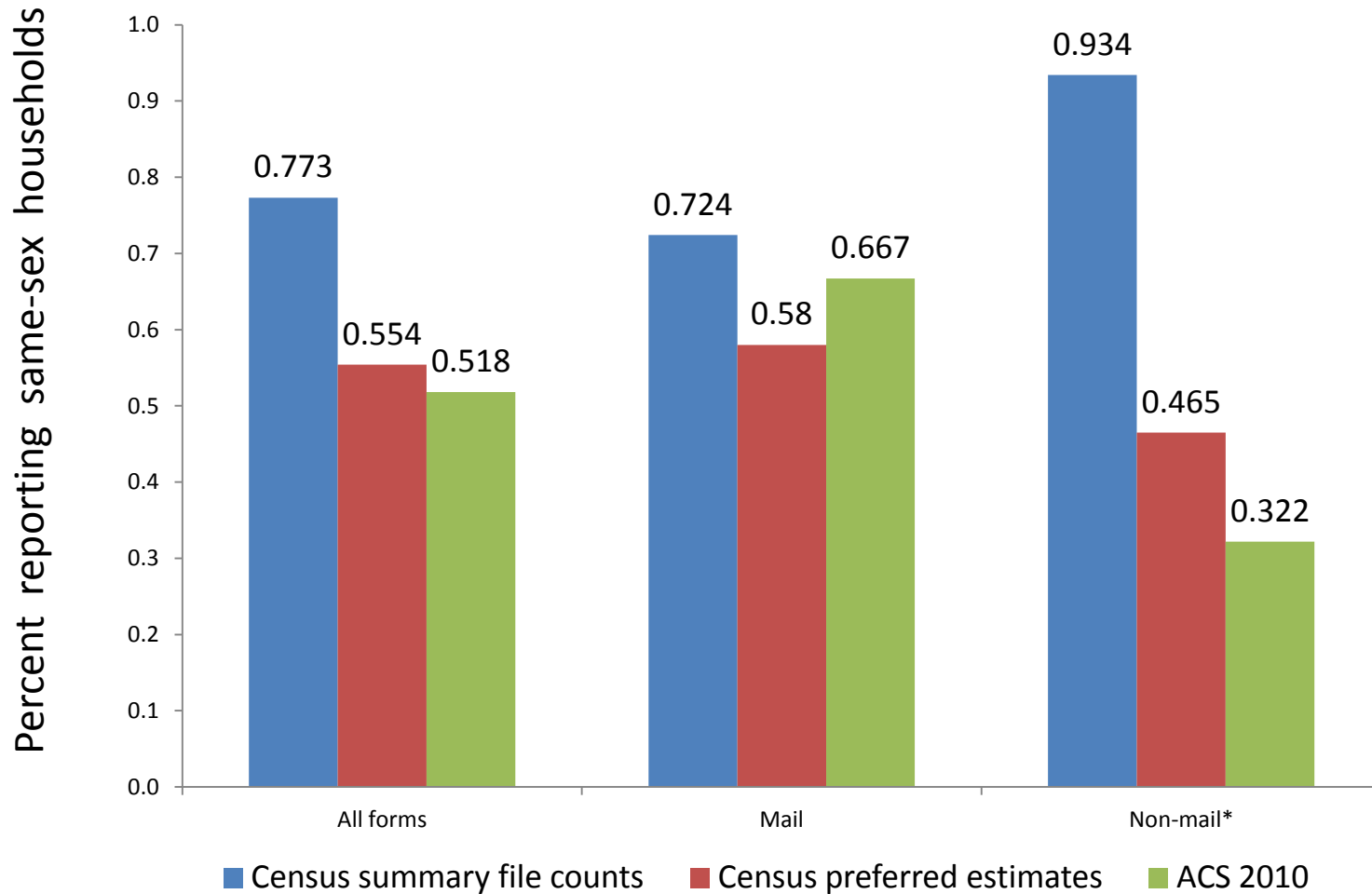
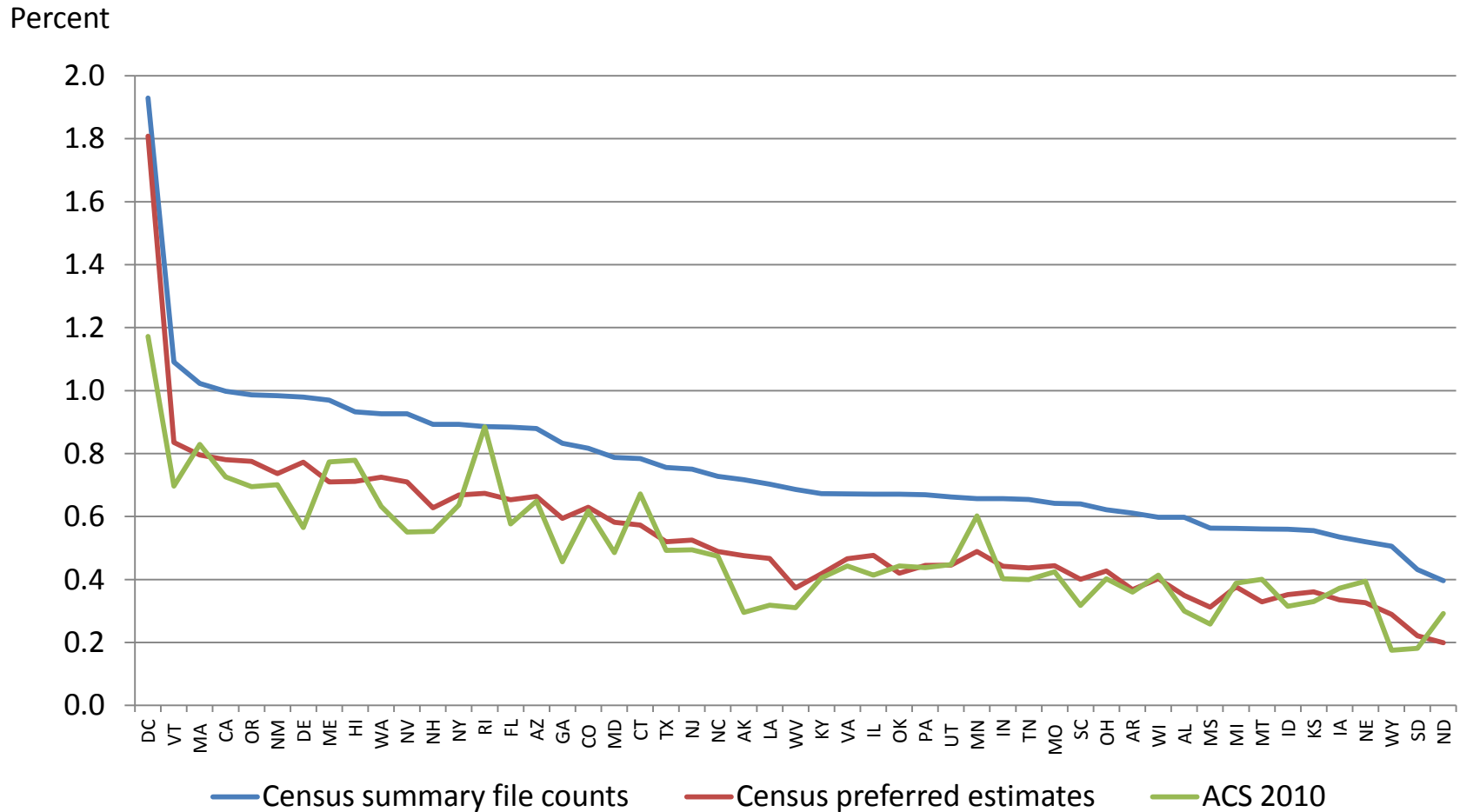


Figure 11b. Percent of Households Reporting as Same-sex Couple Households by Form Type: 2010 Census and 2010 ACS Estimates



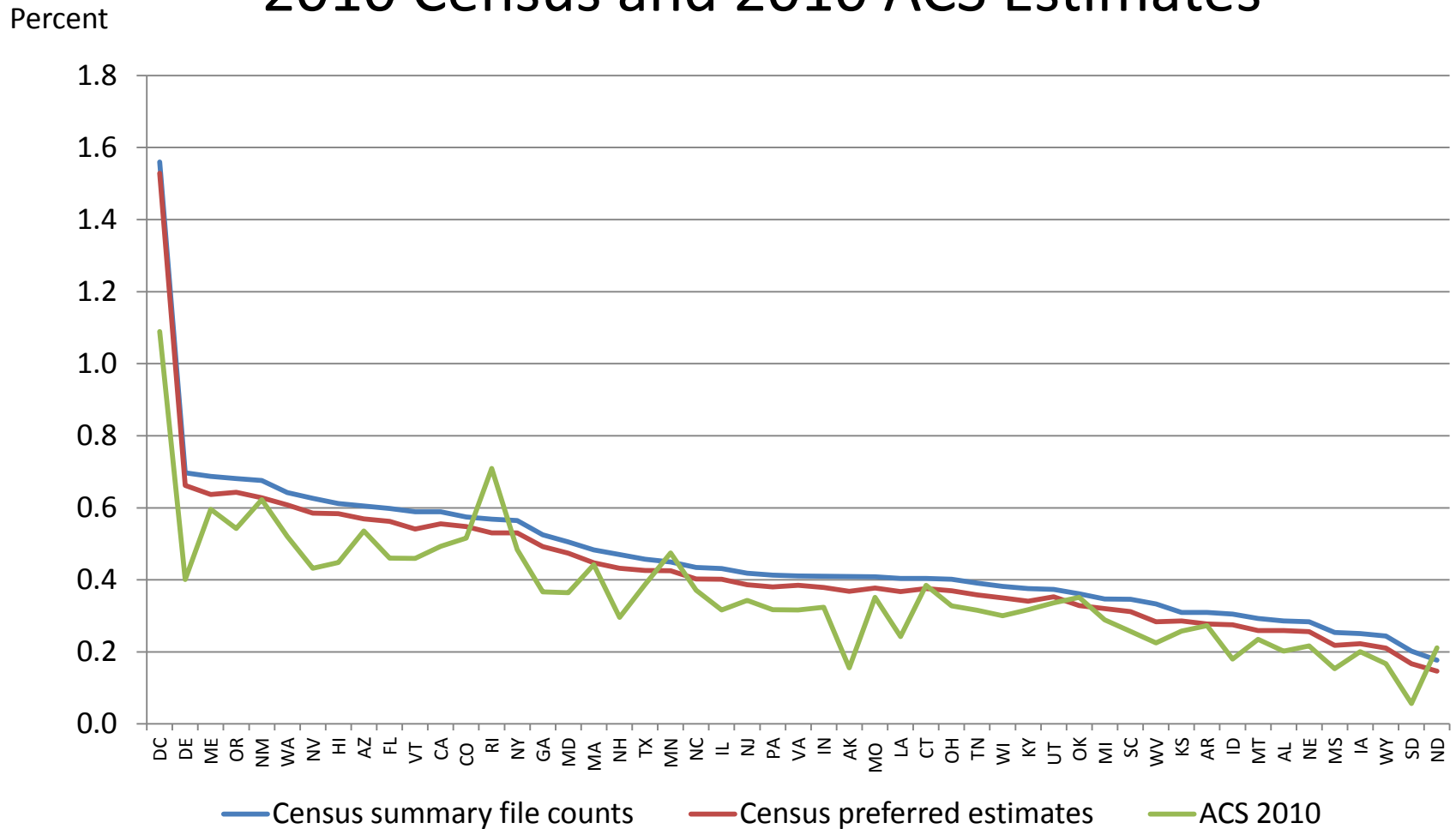
•NRFU forms for 2010 Census and CATI/CAPI forms for ACS 2010.

Figure 12a. Percent of Households Reporting as Same-sex Couple Households by State: 2010 Census and 2010 ACS Estimates



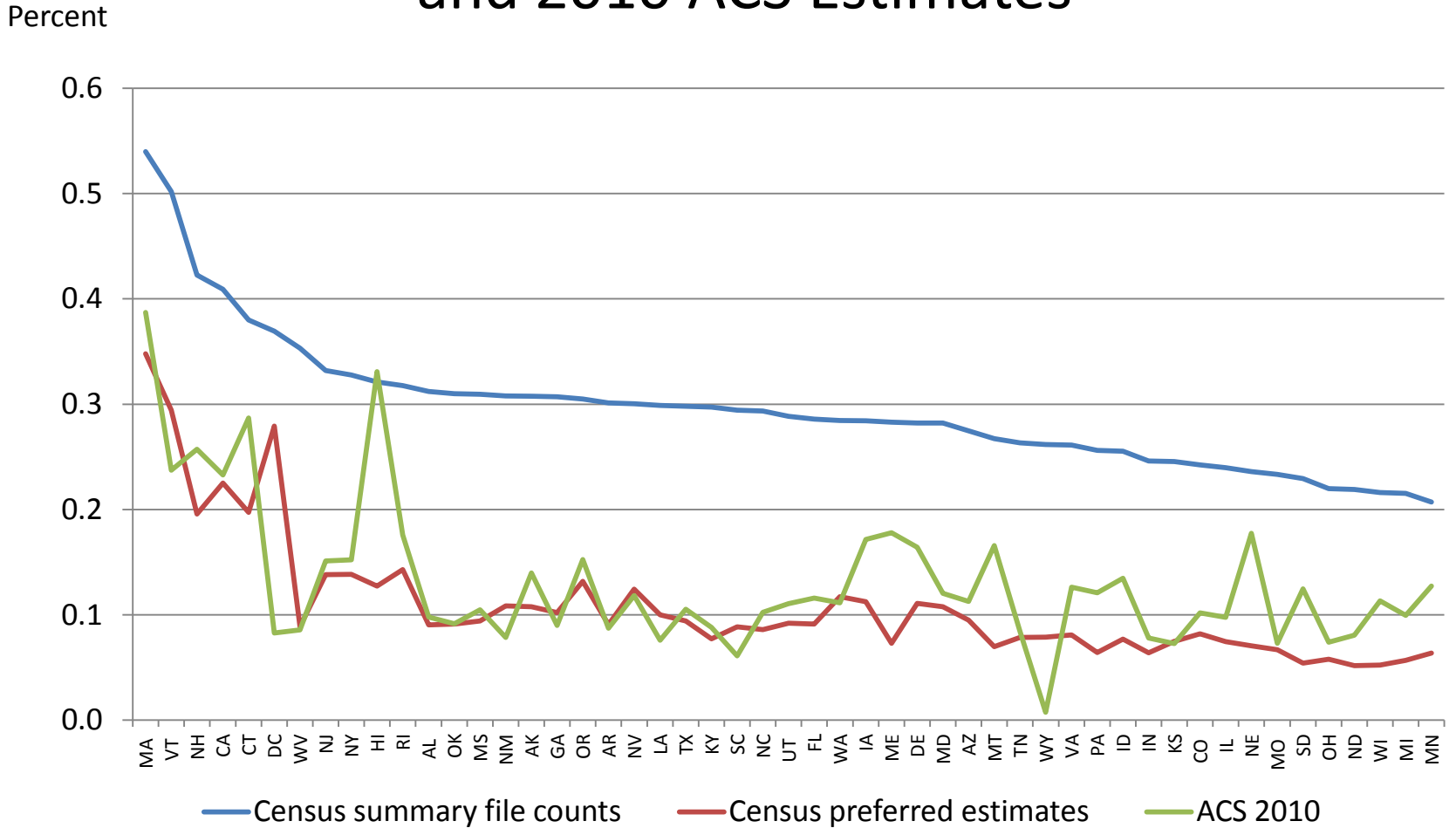
Note: States ordered from highest to lowest based on 2010 Census summary file percents.

Figure 12b. Percent of Households Reporting as Same-sex Unmarried Partner Households by State: 2010 Census and 2010 ACS Estimates



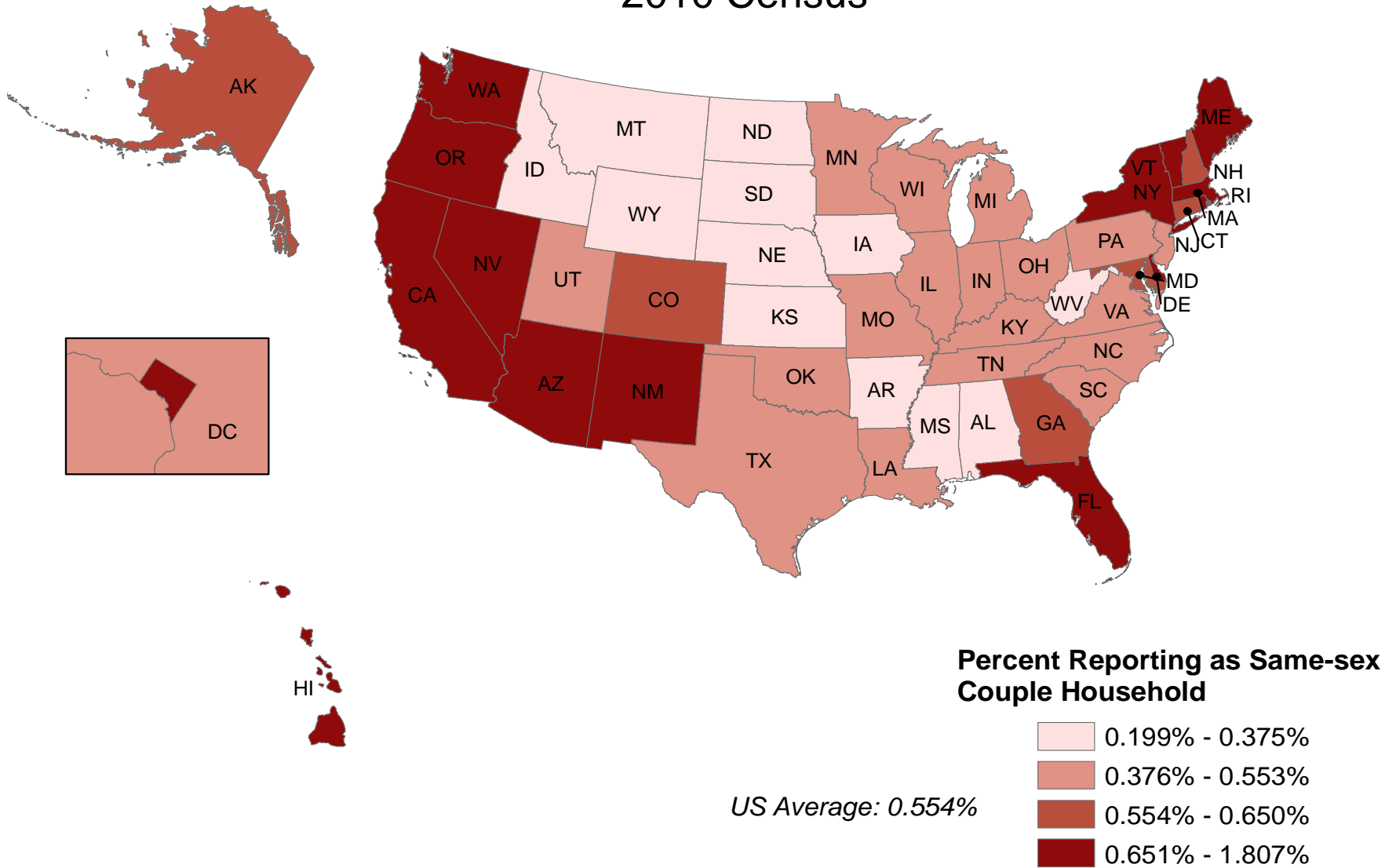
Note: States ordered from highest to lowest based on 2010 Census summary file percents.

Figure 12c. Percent of Households Reporting as Same-sex Spouse Households by State: 2010 Census and 2010 ACS Estimates

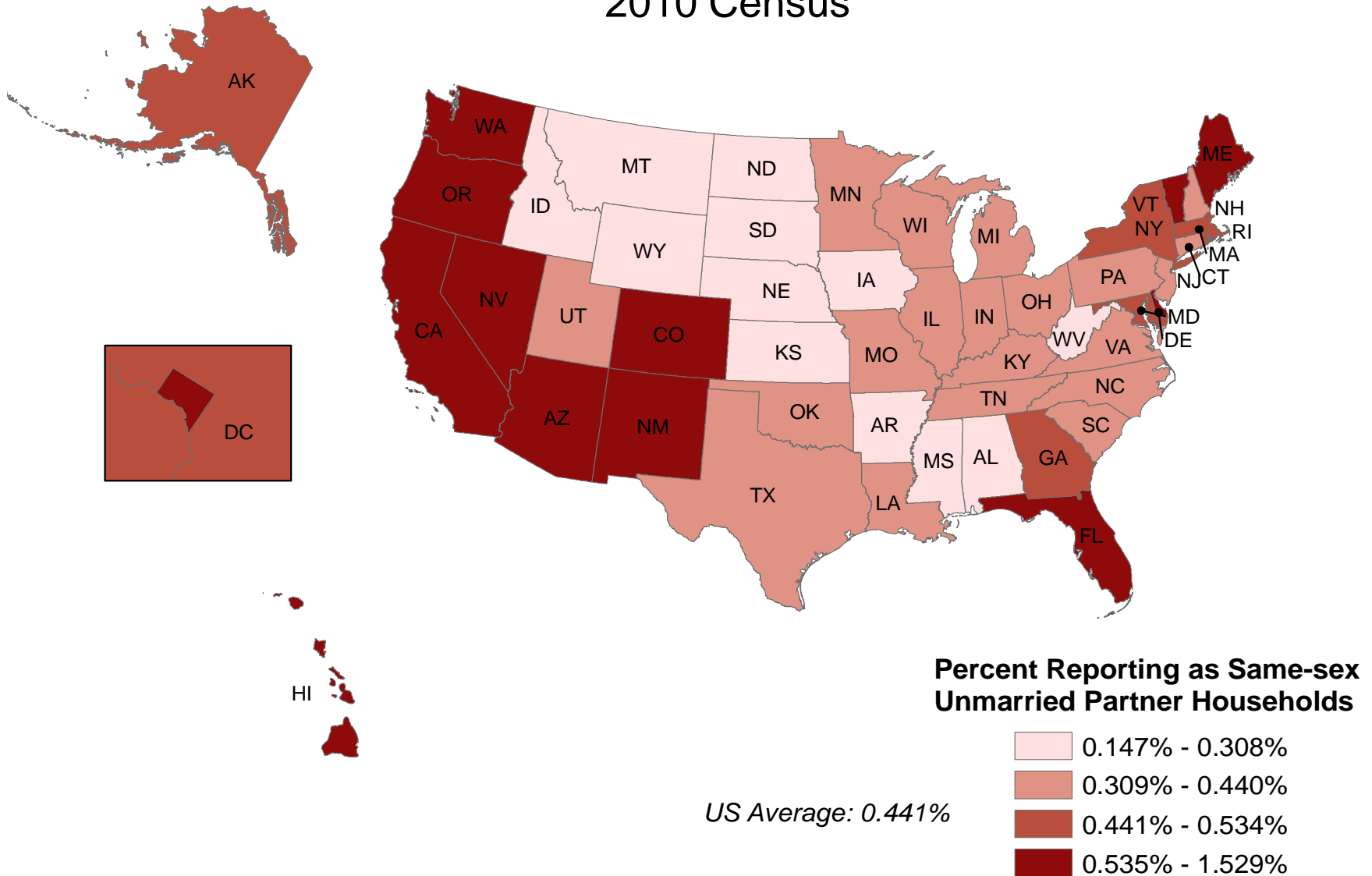


Note: States ordered from highest to lowest based on 2010 Census summary file percents.

Map 5a. Percent of All Households Reporting as Same-sex Couple Households Using Preferred Estimates: 2010 Census



Map 5b. Percent of All Households Reporting as Same-sex Unmarried Partner Households Using Preferred Estimates: 2010 Census



Map 5c. Percent of All Households Reporting as Same-sex Spousal Households Using Preferred Estimates: 2010 Census

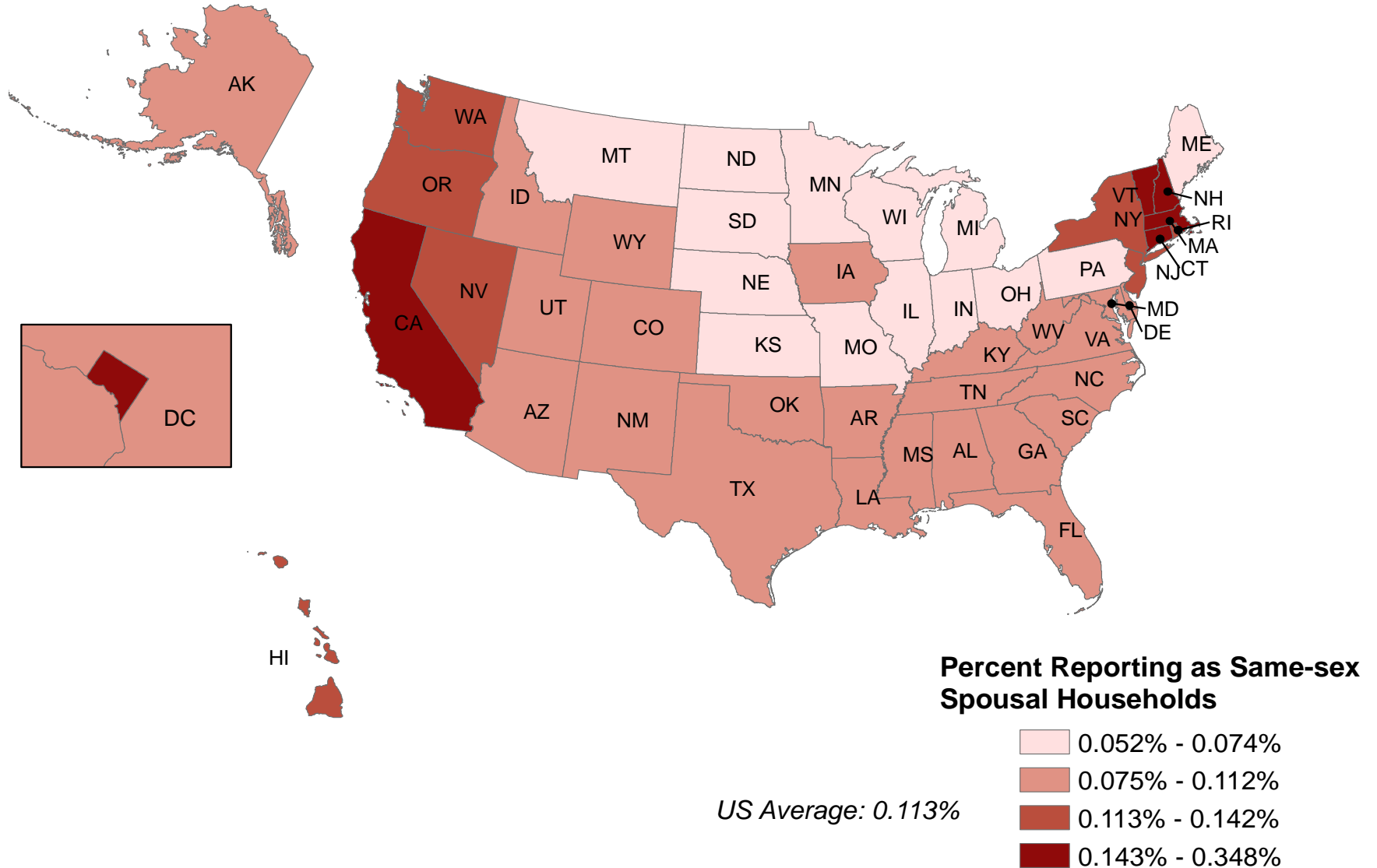
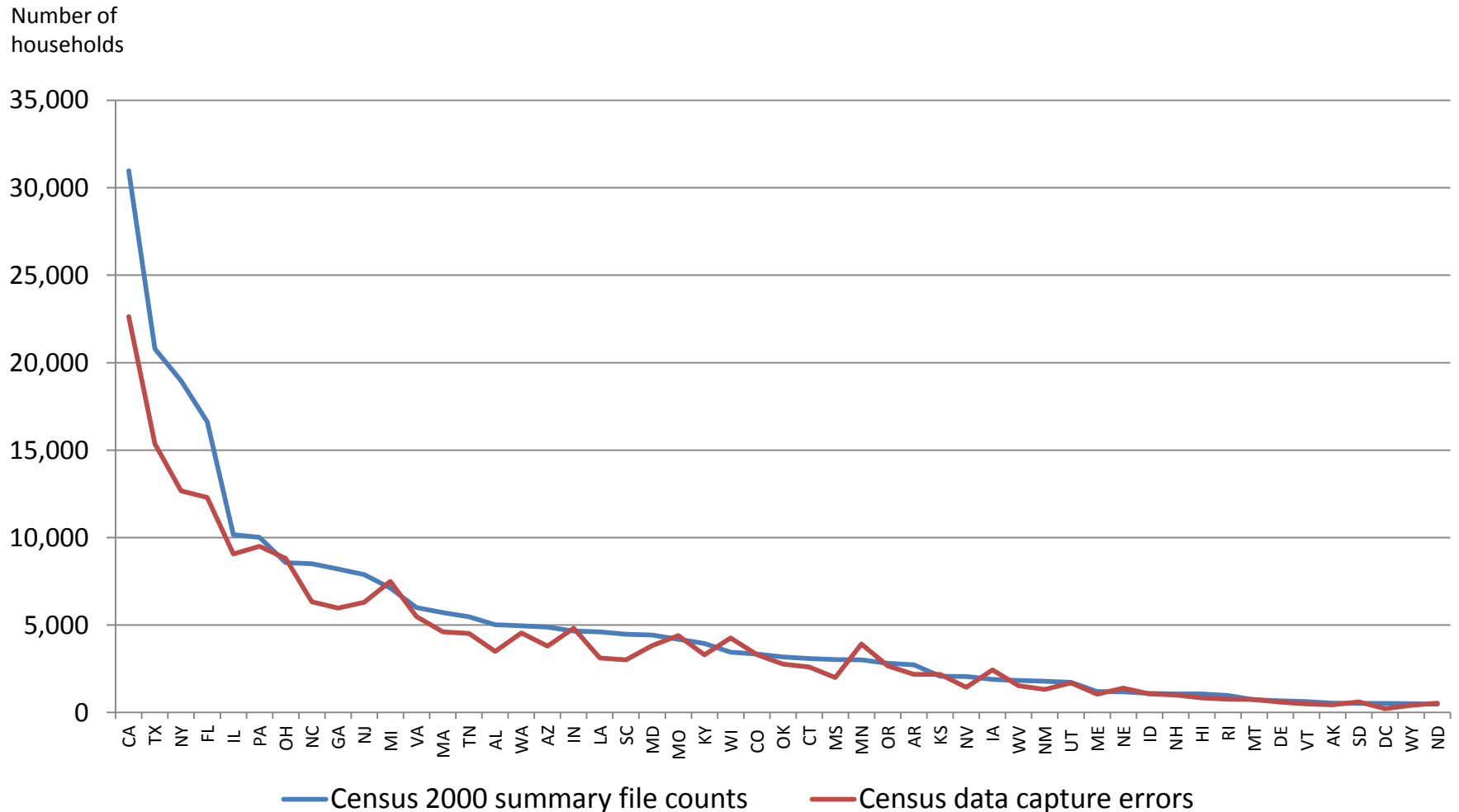


Figure 13. Same-sex Spousal Households by State: Census 2000 Summary File Counts and Predicted Data Capture Errors Derived from 2010 Census Inconsistency Ratios



Note: States ordered from highest to lowest based on Census 2000 summary file counts.