

**Transmission of material in this release is embargoed until 8:30 a.m. (EST) Thursday, February 17, 2011**

USDL-11-0203

Technical information: (202) 691-7000 • Reed.Steve@bls.gov • www.bls.gov/cpi  
Media Contact: (202) 691-5902 • PressOffice@bls.gov

(NOTE: This release was reissued on Friday, April 15, 2011, to correct errors in the January 2011 data. Corrections have been made to Table 7. There were no changes made to the text of the release.)

### CONSUMER PRICE INDEX – JANUARY 2011

The Consumer Price Index for All Urban Consumers (CPI-U) increased 0.4 percent in January on a seasonally adjusted basis, the U.S. Bureau of Labor Statistics reported today. Over the last 12 months, the all items index increased 1.6 percent before seasonal adjustment.

Increases in indexes for energy commodities and for food accounted for over two thirds of the all items increase. The indexes for gasoline and fuel oil both increased in January, continuing their recent strong upward trend. The index for food at home posted its largest increase in over two years with all six major grocery store food group indexes rising.

The index for all items less food and energy also rose in January. The indexes for apparel, shelter, airline fares, and recreation all posted increases. In contrast, the indexes for new vehicles and for used cars and trucks declined in January.

Over the last 12 months, the food index has risen 1.8 percent with the food at home index up 2.1 percent; both 12-month changes are the highest since 2009. The energy index has increased 7.3 percent over the last 12 months, with the gasoline index up 13.4 percent. The index for all items less food and energy has risen 1.0 percent.

**Chart 1. One-month percent change in CPI for All Urban Consumers (CPI-U), seasonally adjusted, Jan. 2010 - Jan. 2011**  
Percent change

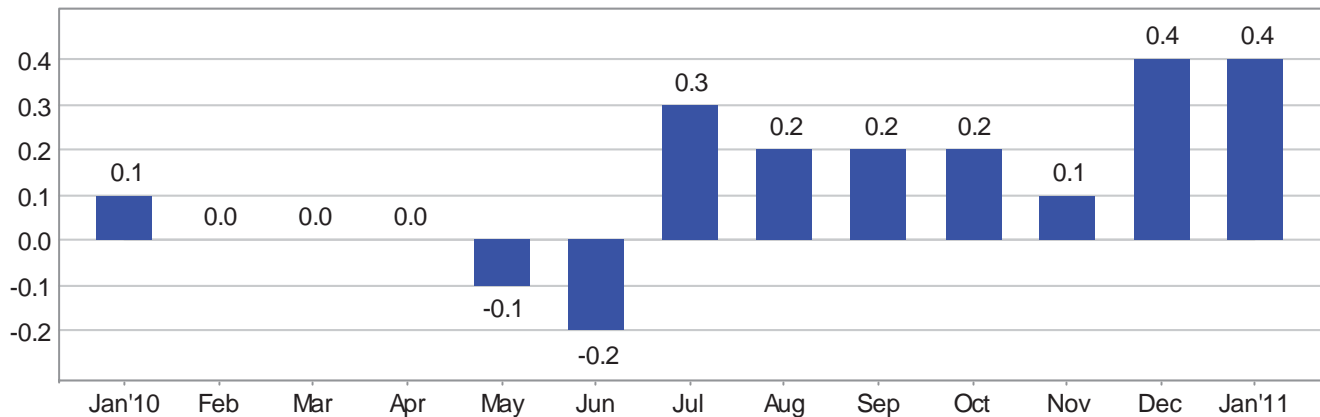


Chart 2. 12-month percent change in CPI for All Urban Consumers (CPI-U), not seasonally adjusted, Jan. 2010 - Jan. 2011

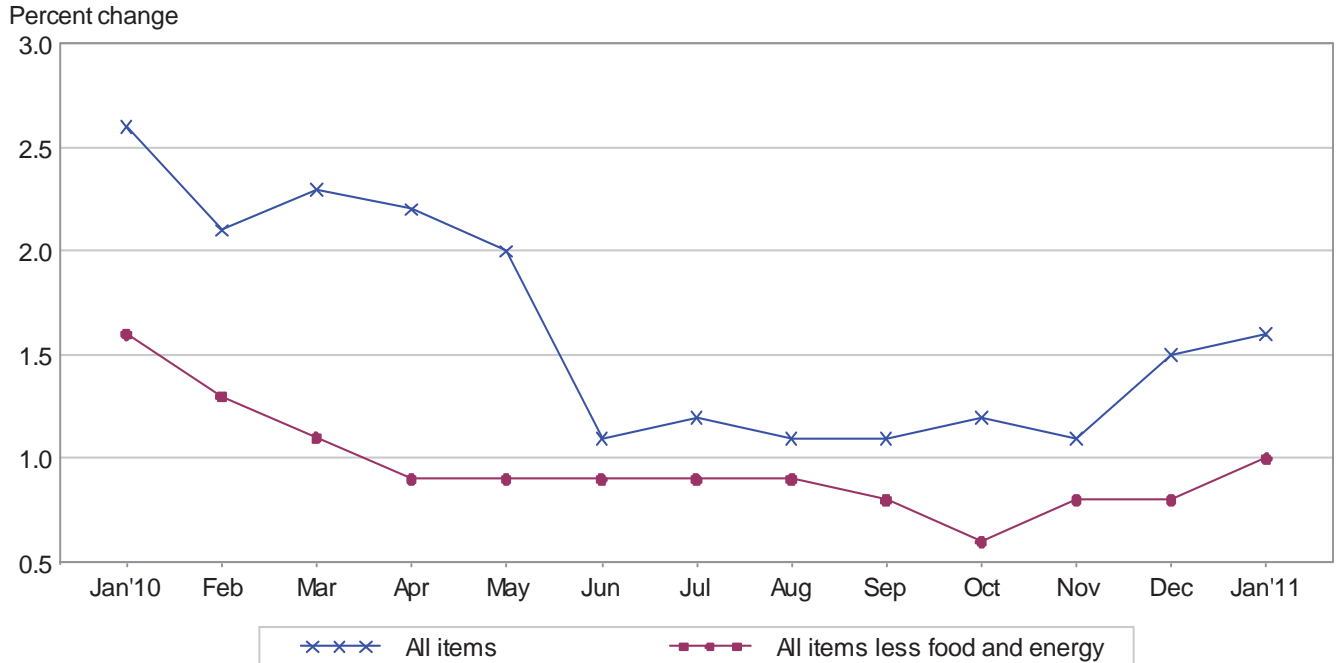


Table A. Percent changes in CPI for All Urban Consumers (CPI-U): U.S. city average

	Seasonally adjusted changes from preceding month							Un-adjusted 12-mos. ended Jan. 2011
	July 2010	Aug. 2010	Sep. 2010	Oct. 2010	Nov. 2010	Dec. 2010	Jan. 2011	
All items .....	.3	.2	.2	.2	.1	.4	.4	1.6
Food .....	.0	.1	.3	.1	.2	.1	.5	1.8
Food at home .....	.0	.0	.4	.1	.2	.2	.7	2.1
Food away from home <sup>1</sup> .....	.0	.3	.3	.1	.1	.1	.2	1.5
Energy .....	3.3	1.6	1.1	2.5	.1	4.0	2.1	7.3
Energy commodities .....	5.6	2.6	2.2	4.4	.7	6.4	4.0	13.4
Gasoline (all types) .....	6.2	2.9	2.2	4.5	.7	6.7	3.5	13.4
Fuel oil <sup>1</sup> .....	-1.6	.9	.8	4.7	4.2	4.9	6.8	17.3
Energy services .....	.5	.4	-.4	.0	-.8	.6	-.6	-.7
Electricity .....	.4	-.1	-.1	.2	.6	.3	-.5	1.2
Utility (piped) gas service .....	.8	1.4	-1.4	-.6	-5.3	1.7	-1.2	-6.4
All items less food and energy .....	.1	.1	.0	.0	.1	.1	.2	1.0
Commodities less food and energy commodities .....	.1	.1	-.2	-.2	.0	-.1	.2	-.2
New vehicles .....	.1	.2	.1	-.1	-.2	-.1	-.1	.1
Used cars and trucks .....	.5	.9	-.4	-.6	.1	-.1	-.3	2.4
Apparel .....	.1	.0	-.5	-.2	.1	.1	1.0	.0
Medical care commodities <sup>1</sup> .....	-.2	.2	.3	.1	.2	.1	.5	2.7
Services less energy services .....	.1	.0	.1	.1	.2	.1	.1	1.4
Shelter .....	.1	.0	.0	.1	.1	.1	.1	.6
Transportation services .....	.0	.0	.3	.3	.4	.2	.6	3.4
Medical care services .....	.0	.2	.7	.2	.2	.3	-.1	3.0

<sup>1</sup> Not seasonally adjusted.

## **Food**

The food index rose 0.5 percent in January. The food at home index increased 0.7 percent, the largest increase since 2008. All six major grocery store food groups posted increases. The index for nonalcoholic beverages increased the most, rising 1.5 percent, with the indexes for carbonated drinks and coffee both rising sharply. The fruits and vegetables index increased 1.3 percent with the index for fresh vegetables up 2.1 percent. The indexes for meats, poultry, fish, and eggs and for cereals and bakery products increased 0.9 percent and 0.8 percent, respectively. The indexes for dairy and related products and for other food at home posted slight increases. Over the past 12 months, the index for meats, poultry, fish, and eggs has risen 6.2 percent with the other grocery store food group indexes posting smaller increases. The index for food away from home rose 0.2 percent in January and has risen 1.5 percent over the past 12 months.

## **Energy**

The energy index continued its recent string of increases, rising 2.1 percent in January. The gasoline index rose 3.5 percent and has increased seven months in a row. (Before seasonal adjustment, gasoline prices rose 3.8 percent in January.) The index for household energy declined in January, falling 0.2 percent. A 6.8 percent increase in the index for fuel oil was more than offset by a 1.2 percent decrease in the natural gas index and a 0.5 percent decline in the electricity index. The indexes for gasoline and fuel oil have risen significantly over the last 12 months, but the index for natural gas has declined 6.4 percent.

## **All items less food and energy**

The index for all items less food and energy rose 0.2 percent in January after increasing 0.1 percent in each of the previous two months. The shelter index rose 0.1 percent in January, with the rent index increasing 0.2 percent and the index for owners' equivalent rent rising 0.1 percent. The apparel index, which increased 0.1 percent in December, rose 1.0 percent in January. The index for airline fares increased for the fifth month in a row, rising 2.2 percent in January. The medical care index rose slightly, edging up 0.1 percent, with the medical care commodities index increasing 0.5 percent while the index for medical care services declined 0.1 percent. The recreation index turned up in January, rising 0.2 percent after declining 0.2 percent in December, as did the index for household furnishings and operations, which increased 0.1 percent in January after declining in each of the four prior months. In contrast to these increases, the index for new vehicles fell 0.1 percent in January and the index for used cars and trucks declined 0.3 percent.

The index for all items less food and energy increased 1.0 percent over the last 12 months. The shelter index has gone up 0.6 percent over that time period with the rent index up 1.0 percent. The index for airline fares has risen 9.8 percent and the indexes for medical care, for used cars and trucks, and for tobacco also increased. The apparel index is unchanged from a year ago, while the indexes for household furnishings and operations and for recreation have declined.

## Not seasonally adjusted CPI measures

The Consumer Price Index for All Urban Consumers (CPI-U) increased 1.6 percent over the last 12 months to an index level of 220.223 (1982-84=100). For the month, the index increased 0.5 percent prior to seasonal adjustment.

The Consumer Price Index for Urban Wage Earners and Clerical Workers (CPI-W) increased 1.8 percent over the last 12 months to an index level of 216.400 (1982-84=100). For the month, the index rose 0.5 percent prior to seasonal adjustment.

The Chained Consumer Price Index for All Urban Consumers (C-CPI-U) increased 1.4 percent over the last 12 months. For the month, the index increased 0.5 percent on a not seasonally adjusted basis. Please note that the indexes for the post-2009 period are subject to revision.

**The Consumer Price Index for February 2011 is scheduled to be released on Thursday, March 17, 2011, at 8:30 a.m. (EDT).**

Effective with this release of CPI data, the following series have been re-titled:

- Recreation services has become Other recreation services
- Gas (piped) and electricity has become Energy services
- Canned fish and seafood has become Shelf stable fish and seafood

The Recreation services index did not include all services under the major group Recreation, specifically video and audio related services, pet services, and photography and film services are excluded. The new title, Other recreation services, reflects these exclusions.

Gas (piped) and electricity has been presented as Energy services in Table A of the CPI News Release since August 2009. At that time, the format text of the News Release was updated to focus on Food, Energy, and All items less food and energy instead of the major groups (Food, Housing, Apparel, Transportation, Medical care, Education and communication, Recreation, and Other goods and services). The title has been changed in the remainder of the publication tables in January 2011 to improve consistency.

The title for Canned fish and seafood has changed to Shelf stable fish and seafood to better reflect current packaging methods.

## Revised seasonally adjusted changes

Over-the-month percent changes in the U.S. City Average Consumer Price Index for All Urban Consumers (CPI-U) for All Items and for All Items less food and energy, seasonally adjusted, using former and recalculated seasonal factors for 2010.

### All Items

2010	Former	Recalculated	Difference
January	.2	.1	-.1
February	.0	.0	.0
March	.1	.0	-.1
April	-.1	.0	.1
May	-.2	-.1	.1
June	-.1	-.2	-.1
July	.3	.3	.0
August	.3	.2	-.1
September	.1	.2	.1
October	.2	.2	.0
November	.1	.1	.0
December	.5	.4	-.1

### All Items less food and energy

2010	Former	Recalculated	Difference
January	-.1	-.1	.0
February	.1	.1	.0
March	.0	.0	.0
April	.0	.0	.0
May	.1	.1	.0
June	.2	.1	-.1
July	.1	.1	.0
August	.0	.1	.1
September	.0	.0	.0
October	.0	.0	.0
November	.1	.1	.0
December	.1	.1	.0

## **C-CPI-U Index Revisions**

As scheduled, effective with release of data for January 2011, the Chained Consumer Price Index for All Urban Consumers (C-CPI-U) has undergone its annual revision. Because the current expenditure data required for the calculation of the C-CPI-U are available only with a time lag, the index is issued first in preliminary form, using the latest available expenditure data at the time of publication, and is subject to two subsequent revisions. Therefore, C-CPI-U indexes for the 12 months of 2009 will be issued in final form – employing monthly expenditure weights from 2009. Values for the 12 months of 2010 will be revised and issued as interim, using expenditure weights from the 2007-2008 period. Calculation of the initial value of the January 2011 C-CPI-U index, and all subsequent months in 2011, will also be based upon 2007-2008 expenditure weights.

For more information on the C-CPI-U, contact Rob Cage by telephone at (202) 691-6959 or by electronic mail at [Cage.Rob@bls.gov](mailto:Cage.Rob@bls.gov).

## **Facilities for Sensory Impaired**

Information from this release will be made available to sensory impaired individuals upon request. Voice phone: 202-691-5200, Federal Relay Services: 1-800-877-8339.

## **Brief Explanation of the CPI**

The Consumer Price Index (CPI) is a measure of the average change in prices over time of goods and services purchased by households. The Bureau of Labor Statistics publishes CPIs for two population groups: (1) the CPI for Urban Wage Earners and Clerical Workers (CPI-W), which covers households of wage earners and clerical workers that comprise approximately 32 percent of the total population and (2) the CPI for All Urban Consumers (CPI-U) and the Chained CPI for All Urban Consumers (C-CPI-U), which cover approximately 87 percent of the total population and include in addition to wage earners and clerical worker households, groups such as professional, managerial, and technical workers, the self-employed, short-term workers, the unemployed, and retirees and others not in the labor force.

The CPIs are based on prices of food, clothing, shelter, and fuels, transportation fares, charges for doctors' and dentists' services, drugs, and other goods and services that people buy for day-to-day living. Prices are collected each month in 87 urban areas across the country from about 4,000 housing units and approximately 26,000 retail establishments—department stores, supermarkets, hospitals, filling stations, and other types of stores and service establishments. All taxes directly associated with the purchase and use of items are included in the index. Prices of fuels and a few other items are obtained every month in all 87 locations. Prices of most other commodities and services are collected every month in the three largest geographic areas and every other month in other areas. Prices of most goods and services are obtained by personal visits or telephone calls of the Bureau's trained representatives.

In calculating the index, price changes for the various items in each location are averaged together with weights, which represent their importance in the spending of the appropriate population group. Local data are then combined to obtain a U.S. city average. For the CPI-U and CPI-W separate indexes are also published by size of city, by region of the country, for cross-classifications of regions and population-size classes, and for 27 local areas. Area indexes do not measure differences in the level of

prices among cities; they only measure the average change in prices for each area since the base period. For the C-CPI-U data are issued only at the national level. It is important to note that the CPI-U and CPI-W are considered final when released, but the C-CPI-U is issued in preliminary form and subject to two annual revisions.

The index measures price change from a designed reference date. For the CPI-U and the CPI-W the reference base is 1982-84 equals 100. The reference base for the C-CPI-U is December 1999 equals 100. An increase of 16.5 percent from the reference base, for example, is shown as 116.500. This change can also be expressed in dollars as follows: the price of a base period market basket of goods and services in the CPI has risen from \$10 in 1982-84 to \$11.65.

For further details visit the CPI home page on the Internet at <http://www.bls.gov/cpi/> or contact our CPI Information and Analysis Section on (202) 691-7000.

## **Note on Sampling Error in the Consumer Price Index**

The CPI is a statistical estimate that is subject to sampling error because it is based upon a sample of retail prices and not the complete universe of all prices. BLS calculates and publishes estimates of the 1-month, 2-month, 6-month and 12-month percent change standard errors annually, for the CPI-U. These standard error estimates can be used to construct confidence intervals for hypothesis testing. For example, the estimated standard error of the 1 month percent change is 0.03 percent for the U.S. All Items Consumer Price Index. This means that if we repeatedly sample from the universe of all retail prices using the same methodology, and estimate a percentage change for each sample, then 95% of these estimates would be within 0.06 percent of the 1 month percentage change based on all retail prices. For example, for a 1-month change of 0.2 percent in the All Items CPI for All Urban Consumers, we are 95 percent confident that the actual percent change based on all retail prices would fall between 0.14 and 0.26 percent. For the latest data, including information on how to use the estimates of standard error, see "Variance Estimates for Price Changes in the Consumer Price Index, January-December 2010". These data are available on the CPI home page (<http://www.bls.gov/cpi/>), or by using the following link <http://www.bls.gov/cpi/cpivar2010.pdf>

## **Calculating Index Changes**

Movements of the indexes from one month to another are usually expressed as percent changes rather than changes in index points, because index point changes are affected by the level of the index in relation to its base period while percent changes are not. The example below illustrates the computation of index point and percent changes.

Percent changes for 3-month and 6-month periods are expressed as annual rates and are computed according to the standard formula for compound growth rates. These data indicate what the percent change would be if the current rate were maintained for a 12-month period.

### Index Point Change

CPI	202.416
Less previous index	201.800
Equals index point change	.616

### Percent Change

Index point difference	.616
Divided by the previous index	201.800
Equals	0.003
Results multiplied by one hundred	0.003x100
Equals percent change	0.3

#### Regions Defined

The states in the four regions shown in Tables 3 and 6 are listed below.

The Northeast--Connecticut, Maine, Massachusetts, New Hampshire, New York, New Jersey, Pennsylvania, Rhode Island, and Vermont.

The Midwest--Illinois, Indiana, Iowa, Kansas, Michigan, Minnesota, Missouri, Nebraska, North Dakota, Ohio, South Dakota, and Wisconsin.

The South--Alabama, Arkansas, Delaware, Florida, Georgia, Kentucky, Louisiana, Maryland, Mississippi, North Carolina, Oklahoma, South Carolina, Tennessee, Texas, Virginia, West Virginia, and the District of Columbia.

The West--Alaska, Arizona, California, Colorado, Hawaii, Idaho, Montana, Nevada, New Mexico, Oregon, Utah, Washington, and Wyoming.

### **A Note on Seasonally Adjusted and Unadjusted Data**

Because price data are used for different purposes by different groups, the Bureau of Labor Statistics publishes seasonally adjusted as well as unadjusted changes each month.

For analyzing general price trends in the economy, seasonally adjusted changes are usually preferred since they eliminate the effect of changes that normally occur at the same time and in about the same magnitude every year--such as price movements resulting from changing climatic conditions, production cycles, model changeovers, holidays, and sales.

The unadjusted data are of primary interest to consumers concerned about the prices they actually pay. Unadjusted data also are used extensively for escalation purposes. Many collective bargaining contract agreements and pension plans, for example, tie compensation changes to the Consumer Price Index before adjustment for seasonal variation.



Seasonal factors used in computing the seasonally adjusted indexes are derived by the X-12-ARIMA Seasonal Adjustment Method. Seasonally adjusted indexes and seasonal factors are computed annually. Each year, the last 5 years of seasonally adjusted data are revised. Data from January 2006 through December 2010 were replaced in January 2011. Exceptions to the usual revision schedule were: the updated seasonal data at the end of 1977 replaced data from 1967 through 1977; and, in January 2002, dependently seasonally adjusted series were revised for January 1987-December 2001 as a result of a change in the aggregation weights for dependently adjusted series. For further information, please see “Aggregation of Dependently Adjusted Seasonally Adjusted Series,” in the October 2001 issue of the CPI Detailed Report.

Effective with the publication of data from January 2006 through December 2010 in January 2011, the Video and audio series and the Information technology, hardware and services series were changed from independently adjusted to dependently adjusted. This resulted in an increase in the number of seasonal components used in deriving seasonal movement of the All items and 54 other lower level aggregations, from 73 for the publication of January 1998 through December 2005 data to 82 for the publication of seasonally adjusted data for January 2006 and later. Each year the seasonal status of every series is reevaluated based upon certain statistical criteria. If any of the 82 components change their seasonal adjustment status from seasonally adjusted to not seasonally adjusted, not seasonally adjusted data will be used in the aggregation of the dependent series for the last 5 years, but the seasonally adjusted indexes before that period will not be changed. Note: 37 of the 82 components are not seasonally adjusted for 2011.

Seasonally adjusted data, including the all items index levels, are subject to revision for up to five years after their original release. For this reason, BLS advises against the use of these data in escalation agreements.

Effective with the calculation of the seasonal factors for 1990, the Bureau of Labor Statistics has used an enhanced seasonal adjustment procedure called Intervention Analysis Seasonal Adjustment for some CPI series. Intervention Analysis Seasonal Adjustment allows for better estimates of seasonally adjusted data. Extreme values and/or sharp movements which might distort the seasonal pattern are estimated and removed from the data prior to calculation of seasonal factors. Beginning with the calculation of seasonal factors for 1996, X-12-ARIMA software was used for Intervention Analysis Seasonal Adjustment.

For the seasonal factors introduced in January 2011, BLS adjusted 29 series using Intervention Analysis Seasonal Adjustment, including selected food and beverage items, motor fuels, electricity and vehicles. For example, this procedure was used for the Motor fuel series to offset the effects of events such as damage to oil refineries from Hurricane Katrina.

For a complete list of Intervention Analysis Seasonal Adjustment series and explanations, please refer to the article “Intervention Analysis Seasonal Adjustment”, located on our website at <http://www.bls.gov/cpi/cpisapage.htm>.

For additional information on seasonal adjustment in the CPI, please write to the Bureau of Labor Statistics, Division of Consumer Prices and Price Indexes, Washington, DC 20212 or contact David Levin at (202) 691-6968, or by e-mail at [Levin.David@bls.gov](mailto:Levin.David@bls.gov). If you have general questions about the CPI, please call our information staff at (202) 691-7000.

**Table 1. Consumer Price Index for All Urban Consumers (CPI-U): U.S. city average, by expenditure category and commodity and service group**

(1982-84=100, unless otherwise noted)

CPI-U Expenditure category	Relative importance, December 2010	Unadjusted indexes		Unadjusted percent change to Jan. 2011 from—		Seasonally adjusted percent change from—		
		Dec. 2010	Jan. 2011	Jan. 2010	Dec. 2010	Oct. to Nov.	Nov. to Dec.	Dec. to Jan.
All items .....	100.000	219.179	220.223	1.6	0.5	0.1	0.4	0.4
All items (1967=100) .....	-	656.563	659.692	-	-	-	-	-
Food and beverages .....	14.792	221.278	223.160	1.8	.9	.1	.1	.5
Food .....	13.742	220.946	222.912	1.8	.9	.2	.1	.5
Food at home .....	7.816	216.955	220.016	2.1	1.4	.2	.2	.7
Cereals and bakery products .....	1.090	250.592	253.349	1.0	1.1	.3	.4	.8
Meats, poultry, fish, and eggs .....	1.813	212.019	214.344	6.2	1.1	.4	-.3	.9
Dairy and related products <sup>1</sup> .....	.839	202.056	202.349	1.7	.1	.0	.4	.1
Fruits and vegetables .....	1.152	277.089	285.619	2.3	3.1	-.1	1.8	1.3
Nonalcoholic beverages and beverage materials .....	.926	159.229	164.019	.2	3.0	.6	-.1	1.5
Other food at home .....	1.996	190.147	191.468	.2	.7	.0	.1	.2
Sugar and sweets <sup>1</sup> .....	.297	203.098	202.648	1.4	-.2	-.1	1.3	-.2
Fats and oils .....	.232	200.476	207.813	3.8	3.7	.8	-.4	2.1
Other foods .....	1.466	202.776	203.610	-.5	.4	-.1	-.1	-.1
Other miscellaneous foods <sup>1 2</sup> .....	.432	122.419	120.930	-.5	-.1	-.9	1.5	-.2
Food away from home <sup>1</sup> .....	5.926	227.722	228.181	1.5	.2	.1	.1	.2
Other food away from home <sup>1 2</sup> .....	.329	160.681	160.643	2.0	.0	.2	.2	.0
Alcoholic beverages .....	1.051	224.215	224.975	1.2	.3	.0	.0	.2
Housing .....	41.460	216.142	216.739	.4	.3	.0	.2	.1
Shelter .....	31.955	248.972	249.462	.6	.2	.1	.1	.1
Rent of primary residence <sup>3</sup> .....	5.925	250.986	251.555	1.0	.2	.2	.2	.2
Lodging away from home <sup>2</sup> .....	.776	125.665	128.630	2.3	2.4	-1.0	1.0	-1.0
Owners' equivalent rent of residences <sup>3 4</sup> .....	24.905	257.452	257.775	.5	.1	.1	.1	.1
Owners' equivalent rent of primary residence <sup>3 4</sup> .....	23.310	257.444	257.764	.5	.1	.1	.1	.1
Tenants' and household insurance <sup>1 2</sup> .....	.349	126.194	126.192	1.5	.0	.3	-1.0	.0
Fuels and utilities .....	5.096	212.505	214.045	1.3	.7	-.3	.8	-.1
Household energy .....	4.000	186.338	187.704	.2	.7	-.5	.8	-.2
Fuel oil and other fuels <sup>1</sup> .....	.309	298.037	314.130	11.8	5.4	3.5	4.1	5.4
Energy services <sup>3</sup> .....	3.691	188.443	189.088	-.7	.3	-.8	.6	-.6
Water and sewer and trash collection services <sup>2</sup> .....	1.095	174.543	175.754	5.3	.7	.4	.5	.3
Household furnishings and operations .....	4.409	123.931	124.342	-2.3	.3	-.2	-.1	.1
Household operations <sup>1 2</sup> .....	.772	150.648	151.189	1.1	.4	.0	.3	.4
Apparel .....	3.601	118.071	116.664	.0	-1.2	.1	.1	1.0
Men's and boys' apparel .....	.882	109.711	109.985	.2	.2	-.3	-.3	1.0
Women's and girls' apparel .....	1.520	105.739	102.438	-.9	-3.1	.3	.0	1.5
Infants' and toddlers' apparel .....	.192	112.558	110.096	-2.8	-2.2	1.0	.4	-1.9
Footwear .....	.700	126.585	126.286	-.7	-.2	-1.0	-.1	.8
Transportation .....	17.308	198.280	200.835	5.4	1.3	.3	2.0	1.3
Private transportation .....	16.082	193.545	196.087	5.2	1.3	.2	2.0	1.3
New and used motor vehicles <sup>2</sup> .....	6.333	97.046	97.128	.5	.1	-.1	-.1	-.2
New vehicles .....	3.513	138.567	138.925	.1	.3	-.2	-.1	-.1
Used cars and trucks .....	2.055	142.454	142.555	2.4	.1	.1	-.1	-.3
Motor fuel .....	5.079	256.025	265.703	13.5	3.8	.6	6.5	3.9
Gasoline (all types) .....	4.865	255.319	264.979	13.4	3.8	.7	6.7	3.5
Motor vehicle parts and equipment <sup>1</sup> .....	.408	139.223	140.487	3.9	.9	.3	.3	.9
Motor vehicle maintenance and repair <sup>1</sup> .....	1.172	250.134	250.726	2.1	.2	.0	.1	.2
Public transportation .....	1.227	257.172	259.634	7.7	1.0	1.8	1.4	1.7
Medical care .....	6.627	391.946	393.858	2.9	.5	.2	.2	.1
Medical care commodities <sup>1</sup> .....	1.633	317.199	318.929	2.7	.5	.2	.1	.5
Medical care services .....	4.994	415.079	417.025	3.0	.5	.2	.3	-.1
Professional services .....	2.830	330.651	331.921	2.3	.4	.3	.1	.0

See footnotes at end of table.

**Table 1. Consumer Price Index for All Urban Consumers (CPI-U): U.S. city average, by expenditure category and commodity and service group-Continued**

(1982-84=100, unless otherwise noted)

CPI-U	Relative importance, December 2010	Unadjusted indexes		Unadjusted percent change to Jan. 2011 from—		Seasonally adjusted percent change from—		
		Dec. 2010	Jan. 2011	Jan. 2010	Dec. 2010	Oct. to Nov.	Nov. to Dec.	Dec. to Jan.
<b>Expenditure category</b>								
Hospital and related services .....	1.703	621.176	625.897	6.3	0.8	0.1	0.7	-0.1
Recreation <sup>2</sup> .....	6.293	112.345	112.638	-.6	.3	.0	-.2	.2
Video and audio <sup>2</sup> .....	1.816	97.167	97.325	-2.6	.2	-.1	-.7	.0
Education and communication <sup>2</sup> .....	6.421	130.548	130.665	1.2	.1	.2	-.1	.2
Education <sup>2</sup> .....	3.107	203.343	204.057	4.2	.4	.5	.4	.6
Educational books and supplies .....	.204	513.904	522.026	4.3	1.6	.5	.7	1.2
Tuition, other school fees, and childcare .....	2.903	584.840	586.386	4.2	.3	.5	.4	.5
Communication <sup>2</sup> .....	3.313	83.913	83.783	-1.4	-.2	-.1	-.6	-.2
Information and information processing <sup>2</sup> .....	3.138	80.730	80.422	-1.7	-.4	-.1	-.7	-.4
Telephone services <sup>1 2</sup> .....	2.334	101.739	101.412	-1.3	-.3	-.1	-.6	-.3
Information technology, hardware and services <sup>5</sup> .....	.804	9.232	9.181	-2.9	-.6	-.1	-.9	-.8
Personal computers and peripheral equipment <sup>6</sup> .....	.228	73.559	72.947	-6.9	-.8	-.4	-2.1	-1.7
Other goods and services .....	3.497	384.502	384.689	1.9	.0	.3	.2	.1
Tobacco and smoking products <sup>1</sup> .....	.906	827.680	828.079	5.2	.0	-.1	.8	.0
Personal care .....	2.591	207.196	207.298	.7	.0	.4	.0	.1
Personal care products <sup>1</sup> .....	.671	160.656	160.920	-.4	.2	.3	.2	.2
Personal care services <sup>1</sup> .....	.638	230.159	229.933	.6	-.1	.1	.2	-.1
Miscellaneous personal services .....	1.055	356.475	357.576	2.3	.3	.3	.1	.1
<b>Commodity and service group</b>								
Commodities .....	40.012	176.015	177.480	2.2	.8	.1	.8	.9
Food and beverages .....	14.792	221.278	223.160	1.8	.9	.1	.1	.5
Commodities less food and beverages .....	25.219	151.854	153.102	2.5	.8	.1	1.3	1.1
Nondurables less food and beverages .....	15.474	193.856	196.248	4.7	1.2	.7	2.2	1.8
Apparel .....	3.601	118.071	116.664	.0	-1.2	.1	.1	1.0
Nondurables less food, beverages, and apparel .....	11.873	245.458	250.293	6.1	2.0	.6	3.0	2.0
Durables .....	9.745	110.512	110.696	-.9	.2	-.4	.0	-.1
Services .....	59.988	262.074	262.701	1.2	.2	.1	.2	.1
Rent of shelter <sup>4</sup> .....	31.607	259.418	259.934	.6	.2	.3	.2	-.1
Tenants' and household insurance <sup>1 2</sup> .....	.349	126.194	126.192	1.5	.0	.3	-1.0	.0
Energy services <sup>3</sup> .....	3.691	188.443	189.088	-.7	.3	-.8	.6	-.6
Water and sewer and trash collection services <sup>2</sup> .....	1.095	174.543	175.754	5.3	.7	.4	.5	.3
Household operations <sup>1 2</sup> .....	.772	150.648	151.189	1.1	.4	.0	.3	.4
Transportation services .....	6.140	263.264	263.984	3.4	.3	.4	.2	.6
Medical care services .....	4.994	415.079	417.025	3.0	.5	.2	.3	-.1
Other services .....	11.340	310.824	311.299	1.4	.2	.2	.0	.2
<b>Special indexes</b>								
All items less food .....	86.258	218.921	219.820	1.6	.4	.1	.5	.4
All items less shelter .....	68.045	209.996	211.273	2.1	.6	.1	.6	.5
All items less medical care .....	93.373	210.712	211.714	1.5	.5	.1	.4	.4
Commodities less food .....	26.270	154.443	155.682	2.4	.8	.1	1.2	1.1
Nondurables less food .....	16.525	195.703	198.007	4.4	1.2	.7	2.2	1.6
Nondurables less food and apparel .....	12.923	242.401	246.854	5.7	1.8	.6	2.7	1.9
Nondurables .....	30.266	208.028	210.205	3.3	1.0	.5	1.2	1.1
Services less rent of shelter <sup>4</sup> .....	28.382	285.481	286.292	2.0	.3	.1	.3	.1
Services less medical care services .....	54.994	250.191	250.737	1.1	.2	.3	.2	.0
Energy .....	9.079	217.953	223.266	7.3	2.4	.1	4.0	2.1
All items less energy .....	90.921	221.045	221.666	1.1	.3	.1	.1	.2
All items less food and energy .....	77.179	221.795	222.177	1.0	.2	.1	.1	.2
Commodities less food and energy commodities .....	20.882	142.830	142.845	-.2	.0	.0	-.1	.2
Energy commodities .....	5.388	259.903	269.970	13.4	3.9	.7	6.4	4.0
Services less energy services .....	56.297	269.572	270.199	1.4	.2	.2	.1	.1
Purchasing power of the consumer dollar (1982-84=\$1.00) .....	-	\$ .456	\$ .454	-	-	-	-	-
Purchasing power of the consumer dollar (1967=\$1.00) .....	-	\$ .152	\$ .152	-	-	-	-	-

<sup>1</sup> Not seasonally adjusted.

<sup>2</sup> Indexes on a December 1997=100 base.

<sup>3</sup> This index series was calculated using a Laspeyres estimator. All other item stratum index series were calculated using a geometric means estimator.

<sup>4</sup> Indexes on a December 1982=100 base.

<sup>5</sup> Indexes on a December 1988=100 base.

<sup>6</sup> Indexes on a December 2007=100 base.

- Data not available.

NOTE: Index applies to a month as a whole, not to any specific date.

**Table 2. Consumer Price Index for All Urban Consumers (CPI-U): Seasonally adjusted U.S. city average, by expenditure category and commodity and service group**

(1982-84=100, unless otherwise noted)

CPI-U	Seasonally adjusted indexes				Seasonally adjusted annual rate percent change for					
					3 months ended—			6 months ended—		
	Oct. 2010	Nov. 2010	Dec. 2010	Jan. 2011	Apr. 2010	July 2010	Oct. 2010	Jan. 2011	July 2010	Jan. 2011
<b>Expenditure category</b>										
All items .....	218.970	219.240	220.186	221.062	0.3	0.0	2.5	3.9	0.1	3.2
Food and beverages .....	220.914	221.237	221.524	222.602	1.7	.1	2.3	3.1	.9	2.7
Food .....	220.545	220.884	221.190	222.314	1.8	-.1	2.4	3.2	.9	2.8
Food at home .....	216.576	216.999	217.375	218.983	2.8	-.7	2.1	4.5	1.0	3.3
Cereals and bakery products .....	250.195	250.935	251.870	253.956	-1.7	-2.1	2.1	6.1	-1.9	4.1
Meats, poultry, fish, and eggs .....	211.671	212.605	211.984	213.942	8.4	7.2	4.9	4.4	7.8	4.6
Dairy and related products <sup>1</sup> .....	201.291	201.277	202.056	202.349	-3.3	3.5	4.7	2.1	.0	3.4
Fruits and vegetables .....	270.664	270.268	275.074	278.517	11.1	-13.8	2.1	12.1	-2.2	7.0
Nonalcoholic beverages and beverage materials .....	161.052	162.016	160.310	162.636	.3	-2.0	-1.3	4.0	-.9	1.3
Other food at home .....	191.134	191.146	191.289	191.580	-.3	.2	.2	.9	-.1	.6
Sugar and sweets <sup>1</sup> .....	202.962	200.586	203.098	202.648	2.0	.8	3.6	-.6	1.4	1.5
Fats and oils .....	201.926	203.503	202.623	206.878	1.5	-.8	4.7	10.2	.3	7.4
Other foods .....	204.004	204.250	204.090	203.922	-1.0	.2	-1.2	-.2	-.4	-.7
Other miscellaneous foods <sup>1 2</sup> .....	121.698	120.623	122.419	120.930	2.4	-.8	-1.2	-2.5	.8	-1.8
Food away from home <sup>1</sup> .....	227.287	227.512	227.722	228.181	.6	.8	2.8	1.6	.7	2.2
Other food away from home <sup>1 2</sup> .....	160.036	160.392	160.681	160.643	3.1	1.5	1.8	1.5	2.3	1.6
Alcoholic beverages .....	224.344	224.449	224.494	224.951	.0	2.3	1.3	1.1	1.1	1.2
Housing .....	216.407	216.472	216.850	216.983	-.1	.1	.4	1.1	.0	.8
Shelter .....	248.759	249.019	249.321	249.523	-2	1.0	.4	1.2	.4	.8
Rent of primary residence <sup>3</sup> .....	249.816	250.347	250.844	251.249	.1	.7	.7	2.3	.4	1.5
Lodging away from home <sup>2</sup> .....	134.328	132.990	134.258	132.892	5.3	16.5	-6.9	-4.2	10.7	-5.6
Owners' equivalent rent of residences <sup>3 4</sup> .....	256.876	257.166	257.402	257.659	-.5	.6	.6	1.2	.0	.9
Owners' equivalent rent of primary residence <sup>3 4</sup> .....	256.869	257.158	257.394	257.648	-.5	.6	.6	1.2	.0	.9
Tenants' and household insurance <sup>1 2</sup> .....	127.111	127.501	126.194	126.192	1.7	3.2	4.0	-2.9	2.4	.5
Fuels and utilities .....	214.665	214.089	215.738	215.607	4.7	-3.2	2.2	1.8	.7	2.0
Household energy .....	189.145	188.274	189.867	189.553	4.1	-5.2	1.5	.9	-.7	1.2
Fuel oil and other fuels <sup>1</sup> .....	276.551	286.367	298.037	314.130	-3.9	-22.1	25.6	66.5	-13.5	44.6
Energy services <sup>3</sup> .....	192.656	191.182	192.310	191.114	4.7	-3.8	.0	-3.2	.4	-1.6
Water and sewer and trash collection services <sup>2</sup> .....	173.197	173.971	174.824	175.400	7.0	4.6	4.5	5.2	5.8	4.8
Household furnishings and operations .....	124.670	124.473	124.307	124.382	-4.6	-1.9	-1.5	-.9	-3.3	-1.2
Household operations <sup>1 2</sup> .....	150.151	150.180	150.648	151.189	1.5	1.8	-1.6	2.8	1.7	.6
Apparel .....	119.028	119.132	119.208	120.456	-5.3	3.7	-3.0	4.9	-.9	.9
Men's and boys' apparel .....	111.977	111.637	111.304	112.414	-4.8	7.2	-2.7	1.6	1.0	-.6
Women's and girls' apparel .....	105.964	106.288	106.330	107.957	-8.1	3.2	-5.6	7.7	-2.6	.9
Infants' and toddlers' apparel .....	112.026	113.107	113.587	111.436	-1.4	10.1	-15.9	-2.1	4.2	-9.3
Footwear .....	128.587	127.336	127.149	128.166	-4.7	1.8	1.5	-1.3	-1.5	.1
Transportation .....	196.477	197.102	200.956	203.622	-.7	-3.5	12.1	15.4	-2.1	13.7
Private transportation .....	191.952	192.348	196.183	198.730	-1.3	-3.8	12.9	14.9	-2.5	13.9
New and used motor vehicles <sup>2</sup> .....	97.307	97.253	97.173	97.000	1.5	1.8	-.1	-1.3	1.7	-.7
New vehicles .....	138.318	138.095	137.923	137.752	.7	.8	.7	-1.6	.7	-.5
Used cars and trucks .....	143.987	144.162	144.058	143.664	5.1	6.1	-.4	-.9	5.6	-.7
Motor fuel .....	249.436	250.892	267.320	277.665	-10.2	-16.8	44.6	53.5	-13.5	49.0
Gasoline (all types) .....	248.933	250.744	267.635	277.129	-10.7	-17.6	46.1	53.6	-14.2	49.8
Motor vehicle parts and equipment <sup>1</sup> .....	138.289	138.768	139.223	140.487	1.3	4.6	3.1	6.5	2.9	4.8
Motor vehicle maintenance and repair <sup>1</sup> .....	249.824	249.872	250.134	250.726	2.9	.3	3.7	1.5	1.6	2.6
Public transportation .....	251.921	256.463	260.181	264.616	8.2	.2	1.9	21.7	4.2	11.4
Medical care .....	391.924	392.587	393.537	393.843	4.3	1.4	4.0	2.0	2.8	3.0
Medical care commodities <sup>1</sup> .....	316.082	316.794	317.199	318.929	5.3	-.5	2.5	3.7	2.3	3.1
Medical care services .....	415.526	416.152	417.315	417.004	4.0	2.0	4.5	1.4	3.0	3.0
Professional services .....	330.724	331.641	332.107	331.974	2.2	2.9	2.6	1.5	2.6	2.1

See footnotes at end of table.

**Table 2. Consumer Price Index for All Urban Consumers (CPI-U): Seasonally adjusted U.S. city average, by expenditure category and commodity and service group-Continued**

(1982-84=100, unless otherwise noted)

CPI-U Expenditure category	Seasonally adjusted indexes				Seasonally adjusted annual rate percent change for					
					3 months ended—			6 months ended—		
	Oct. 2010	Nov. 2010	Dec. 2010	Jan. 2011	Apr. 2010	July 2010	Oct. 2010	Jan. 2011	July 2010	Jan. 2011
Hospital and related services .....	620.720	621.219	625.757	624.854	9.4	3.4	10.0	2.7	6.4	6.3
Recreation <sup>2</sup> .....	113.013	112.988	112.727	112.939	-1	-2	-1.8	-3	-2	-1.0
Video and audio <sup>2</sup> .....	98.674	98.576	97.871	97.904	-3.8	-2.3	-1.3	-3.1	-3.0	-2.2
Education and communication <sup>2</sup> .....	130.257	130.500	130.328	130.548	2.3	1.9	-.1	.9	2.1	.4
Education <sup>2</sup> .....	200.725	201.763	202.558	203.738	5.4	4.7	.6	6.1	5.1	3.3
Educational books and supplies .....	508.034	510.408	514.054	520.236	3.0	4.2	.2	10.0	3.6	5.0
Tuition, other school fees, and childcare .....	577.249	580.254	582.411	585.549	5.6	4.8	.6	5.9	5.2	3.2
Communication <sup>2</sup> .....	84.564	84.465	83.943	83.760	-4	-6	-.8	-3.7	-.5	-2.3
Information and information processing <sup>2</sup> .....	81.393	81.292	80.761	80.399	-5	-7	-.8	-4.8	-.6	-2.8
Telephone services <sup>1 2</sup> .....	102.458	102.329	101.739	101.412	-1.3	.3	-.1	-4.0	-.5	-2.1
Information technology, hardware and services <sup>5</sup> .....	9.339	9.328	9.246	9.171	1.9	-3.3	-3.0	-7.0	-.7	-5.0
Personal computers and peripheral equipment <sup>6</sup> .....	75.802	75.503	73.943	72.662	-4.4	-4.6	-2.3	-15.6	-4.5	-9.2
Other goods and services .....	382.709	383.748	384.680	385.031	.3	5.4	-.6	2.4	2.8	.9
Tobacco and smoking products <sup>1</sup> .....	821.529	820.854	827.680	828.079	.6	16.8	1.1	3.2	8.4	2.2
Personal care .....	206.431	207.246	207.326	207.547	.2	1.8	-1.2	2.2	1.0	.5
Personal care products <sup>1</sup> .....	159.951	160.401	160.656	160.920	-1	-6	-3.5	2.4	-.3	-.6
Personal care services <sup>1</sup> .....	229.343	229.623	230.159	229.933	1.8	1.5	-2.0	1.0	1.7	-.5
Miscellaneous personal services .....	356.204	357.200	357.711	358.181	2.5	2.7	1.7	2.2	2.6	2.0
<b>Commodity and service group</b>										
Commodities .....	175.603	175.807	177.291	178.833	-1.3	-1.9	5.0	7.6	-1.6	6.3
Food and beverages .....	220.914	221.237	221.524	222.602	1.7	.1	2.3	3.1	.9	2.7
Commodities less food and beverages .....	151.437	151.586	153.502	155.178	-3.1	-3.0	6.6	10.3	-3.1	8.4
Nondurables less food and beverages .....	191.598	192.897	197.199	200.839	-6.5	-3.9	10.7	20.7	-5.2	15.6
Apparel .....	119.028	119.132	119.208	120.456	-5.3	3.7	-3.0	4.9	-.9	.9
Nondurables less food, beverages, and apparel .....	241.692	243.168	250.350	255.448	-6.2	-7.0	16.5	24.8	-6.6	20.6
Durables .....	111.143	110.661	110.632	110.557	-.9	.5	-1.2	-2.1	-.2	-1.6
Services .....	262.060	262.363	262.782	263.034	1.5	1.2	.9	1.5	1.3	1.2
Rent of shelter <sup>4</sup> .....	259.237	259.975	260.617	260.471	-1.2	.2	1.5	1.9	-.5	1.7
Tenants' and household insurance <sup>1 2</sup> .....	127.111	127.501	126.194	126.192	1.7	3.2	4.0	-2.9	2.4	.5
Energy services <sup>3</sup> .....	192.656	191.182	192.310	191.114	4.7	-3.8	.0	-3.2	.4	-1.6
Water and sewer and trash collection services <sup>2</sup> .....	173.197	173.971	174.824	175.400	7.0	4.6	4.5	5.2	5.8	4.8
Household operations <sup>1 2</sup> .....	150.151	150.180	150.648	151.189	1.5	1.8	-1.6	2.8	1.7	.6
Transportation services .....	261.594	262.751	263.379	264.832	4.5	1.5	2.7	5.0	3.0	3.9
Medical care services .....	415.526	416.152	417.315	417.004	4.0	2.0	4.5	1.4	3.0	3.0
Other services .....	310.443	311.135	311.102	311.610	2.0	2.6	-.4	1.5	2.3	.6
<b>Special indexes</b>										
All items less food .....	218.742	219.001	220.049	220.885	.1	.0	2.5	4.0	.0	3.2
All items less shelter .....	209.786	210.063	211.276	212.429	.6	-.5	3.5	5.1	.0	4.3
All items less medical care .....	210.497	210.750	211.688	212.578	.0	-.1	2.4	4.0	.0	3.2
Commodities less food .....	154.039	154.188	156.060	157.709	-3.0	-2.8	6.4	9.9	-2.9	8.1
Nondurables less food .....	193.557	194.920	199.211	202.374	-6.0	-3.9	10.2	19.5	-5.0	14.8
Nondurables less food and apparel .....	238.870	240.332	246.849	251.499	-5.6	-6.3	14.9	22.9	-6.0	18.8
Nondurables .....	206.493	207.592	210.033	212.320	-1.7	-2.8	6.4	11.8	-2.2	9.1
Services less rent of shelter <sup>4</sup> .....	285.682	286.073	286.792	287.061	3.4	1.0	1.5	1.9	2.2	1.7
Services less medical care services .....	250.112	250.769	251.378	251.378	.6	.5	1.2	2.0	.6	1.6
Energy .....	216.262	216.506	225.151	229.915	-3.9	-11.6	22.8	27.7	-7.8	25.3
All items less energy .....	220.985	221.259	221.434	221.922	.7	1.2	.7	1.7	1.0	1.2
All items less food and energy .....	221.795	222.059	222.210	222.587	.5	1.4	.4	1.4	1.0	.9
Commodities less food and energy commodities .....	143.417	143.373	143.228	143.571	-1.3	1.0	-.9	.4	-.2	-.2
Energy commodities .....	252.524	254.408	270.712	281.416	-9.8	-17.1	43.5	54.2	-13.5	48.8
Services less energy services .....	269.162	269.632	269.986	270.374	1.2	1.6	.9	1.8	1.4	1.4

<sup>1</sup> Not seasonally adjusted.

<sup>2</sup> Indexes on a December 1997=100 base.

<sup>3</sup> This index series was calculated using a Laspeyres estimator. All other item stratum index series were calculated using a geometric means estimator.

<sup>4</sup> Indexes on a December 1982=100 base.

<sup>5</sup> Indexes on a December 1988=100 base.

<sup>6</sup> Indexes on a December 2007=100 base.

NOTE: Index applies to a month as a whole, not to any specific date.

**Table 3. Consumer Price Index for All Urban Consumers (CPI-U): Selected areas, all items index**

(1982-84=100, unless otherwise noted)

CPI-U	Pricing schedule 1	All items									
		Indexes				Percent change to Jan.2011 from—			Percent change to Dec.2010 from—		
		Oct. 2010	Nov. 2010	Dec. 2010	Jan. 2011	Jan. 2010	Nov. 2010	Dec. 2010	Dec. 2009	Oct. 2010	Nov. 2010
U.S. city average .....	M	218.711	218.803	219.179	220.223	1.6	0.6	0.5	1.5	0.2	0.2
<b>Region and area size<sup>2</sup></b>											
Northeast urban .....	M	234.671	235.094	235.141	235.969	1.6	.4	.4	1.6	.2	.0
Size A - More than 1,500,000 .....	M	236.560	236.806	236.828	237.564	1.5	.3	.3	1.4	.1	.0
Size B/C - 50,000 to 1,500,000 <sup>3</sup> .....	M	139.746	140.282	140.351	141.001	1.9	.5	.5	2.0	.4	.0
Midwest urban .....	M	208.689	208.816	209.270	210.388	1.9	.8	.5	1.8	.3	.2
Size A - More than 1,500,000 .....	M	209.182	209.344	209.936	210.928	1.7	.8	.5	1.7	.4	.3
Size B/C - 50,000 to 1,500,000 <sup>3</sup> .....	M	134.074	134.058	134.267	135.061	2.0	.7	.6	1.9	.1	.2
Size D - Nonmetropolitan (less than 50,000) .....	M	205.565	206.014	206.136	207.551	2.0	.7	.7	1.7	.3	.1
South urban .....	M	212.026	211.996	212.488	213.589	1.7	.8	.5	1.4	.2	.2
Size A - More than 1,500,000 .....	M	213.589	213.424	213.850	215.127	1.6	.8	.6	1.4	.1	.2
Size B/C - 50,000 to 1,500,000 <sup>3</sup> .....	M	134.890	134.892	135.240	135.925	1.8	.8	.5	1.5	.3	.3
Size D - Nonmetropolitan (less than 50,000) .....	M	215.390	215.736	216.189	216.750	1.3	.5	.3	1.4	.4	.2
West urban .....	M	221.708	221.671	222.081	223.149	1.4	.7	.5	1.3	.2	.2
Size A - More than 1,500,000 .....	M	226.058	225.847	226.112	227.281	1.5	.6	.5	1.4	.0	.1
Size B/C - 50,000 to 1,500,000 <sup>3</sup> .....	M	133.745	133.930	134.328	134.917	1.2	.7	.4	.9	.4	.3
<b>Size classes</b>											
A <sup>4</sup> .....	M	199.842	199.844	200.123	201.059	1.6	.6	.5	1.5	.1	.1
B/C <sup>3</sup> .....	M	135.174	135.289	135.579	136.260	1.7	.7	.5	1.5	.3	.2
D .....	M	211.831	212.124	212.541	213.417	1.6	.6	.4	1.6	.3	.2
<b>Selected local areas<sup>5</sup></b>											
Chicago-Gary-Kenosha, IL-IN-WI .....	M	213.332	213.066	213.778	215.155	1.4	1.0	.6	1.2	.2	.3
Los Angeles-Riverside-Orange County, CA ...	M	226.794	225.941	226.639	228.652	1.8	1.2	.9	1.3	-.1	.3
New York-Northern N.J.-Long Island, NY-NJ-CT-PA .....	M	241.981	241.960	241.874	242.639	1.5	.3	.3	1.4	.0	.0
Boston-Brockton-Nashua, MA-NH-ME-CT .....	1	-	238.103	-	239.814	1.1	.7	-	-	-	-
Cleveland-Akron, OH .....	1	-	206.168	-	207.587	2.2	.7	-	-	-	-
Dallas-Fort Worth, TX .....	1	-	201.168	-	203.199	.5	1.0	-	-	-	-
Washington-Baltimore, DC-MD-VA-WV <sup>6</sup> .....	1	-	142.915	-	144.327	2.3	1.0	-	-	-	-
Atlanta, GA .....	2	202.913	-	202.519	-	-	-	-	1.0	-.2	-
Detroit-Ann Arbor-Flint, MI .....	2	205.824	-	206.384	-	-	-	-	1.2	.3	-
Houston-Galveston-Brazoria, TX .....	2	195.094	-	194.479	-	-	-	-	1.9	-.3	-
Miami-Fort Lauderdale, FL .....	2	223.631	-	224.907	-	-	-	-	.9	.6	-
Philadelphia-Wilmington-Atlantic City, PA-NJ-DE-MD .....	2	228.543	-	228.017	-	-	-	-	1.4	-.2	-
San Francisco-Oakland-San Jose, CA .....	2	228.107	-	227.658	-	-	-	-	1.5	-.2	-
Seattle-Tacoma-Bremerton, WA .....	2	227.251	-	226.862	-	-	-	-	.6	-.2	-

<sup>1</sup> Foods, fuels, and several other items priced every month in all areas; most other goods and services priced as indicated:

M - Every month.

1 - January, March, May, July, September, and November.

2 - February, April, June, August, October, and December.

<sup>2</sup> Regions defined as the four Census regions. See technical notes.

<sup>3</sup> Indexes on a December 1996=100 base.

<sup>4</sup> Indexes on a December 1986=100 base.

<sup>5</sup> In addition, the following metropolitan areas are published semiannually and appear in Tables 34 and 39 of the January and July issues of the CPI Detailed Report: Anchorage, AK; Cincinnati-Hamilton, OH-KY-IN; Denver-Boulder-Greeley, CO; Honolulu, HI; Kansas City, MO-KS; Milwaukee-Racine, WI; Minneapolis-St. Paul, MN-WI; Phoenix-Mesa, AZ; Pittsburgh, PA; Portland-Salem, OR-WA; St. Louis, MO-IL; San Diego, CA;

Tampa-St. Petersburg-Clearwater, FL.

<sup>6</sup> Indexes on a November 1996=100 base.

- Data not available.

NOTE: Local area indexes are byproducts of the national CPI program. Each local index has a smaller sample size than the national index and is, therefore, subject to substantially more sampling and other measurement error. As a result, local area indexes show greater volatility than the national index, although their long-term trends are similar. Therefore, the Bureau of Labor Statistics strongly urges users to consider adopting the national average CPI for use in their escalator clauses.

NOTE: Index applies to a month as a whole, not to any specific date.



**Table 4. Consumer Price Index for Urban Wage Earners and Clerical Workers (CPI-W): U.S. city average, by expenditure category and commodity and service group**

(1982-84=100, unless otherwise noted)

CPI-W Expenditure category	Relative importance, December 2010	Unadjusted indexes		Unadjusted percent change to Jan. 2011 from—		Seasonally adjusted percent change from—		
		Dec. 2010	Jan. 2011	Jan. 2010	Dec. 2010	Oct. to Nov.	Nov. to Dec.	Dec. to Jan.
All items .....	100.000	215.262	216.400	1.8	0.5	0.1	0.5	0.5
All items (1967=100) .....	-	641.200	644.591	-	-	-	-	-
Food and beverages .....	16.401	220.508	222.385	1.8	.9	.2	.1	.5
Food .....	15.315	220.062	222.039	1.9	.9	.2	.1	.5
Food at home .....	8.906	215.748	218.804	2.2	1.4	.2	.1	.8
Cereals and bakery products .....	1.236	251.419	253.991	1.1	1.0	.3	.4	.7
Meats, poultry, fish, and eggs .....	2.227	211.858	214.127	6.3	1.1	.4	-.3	.9
Dairy and related products <sup>1</sup> .....	.917	200.958	201.170	1.8	.1	.1	.4	.1
Fruits and vegetables .....	1.219	273.977	282.396	2.3	3.1	-.1	1.9	1.2
Nonalcoholic beverages and beverage materials .....	1.091	158.654	163.586	.1	3.1	.8	-.2	1.5
Other food at home .....	2.217	189.176	190.656	.2	.8	-.0	.0	.3
Sugar and sweets <sup>1</sup> .....	.324	202.206	201.824	1.6	-.2	-1.0	1.3	-.2
Fats and oils .....	.258	200.925	208.026	3.6	3.5	.8	-.4	2.1
Other foods .....	1.635	202.520	203.614	-.7	.5	-.1	-.2	.1
Other miscellaneous foods <sup>1 2</sup> .....	.463	122.267	121.161	-.7	-.9	-.9	1.3	-.9
Food away from home <sup>1</sup> .....	6.409	227.871	228.279	1.5	.2	.1	.1	.2
Other food away from home <sup>1 2</sup> .....	.326	161.657	161.635	2.5	.0	.3	.1	.0
Alcoholic beverages .....	1.086	225.592	225.994	1.1	.2	.1	.0	.1
Housing .....	39.228	212.861	213.442	.4	.3	.1	.2	.1
Shelter .....	29.811	243.120	243.569	.6	.2	.1	.1	.1
Rent of primary residence <sup>3</sup> .....	8.396	249.246	249.848	.9	.2	.2	.2	.2
Lodging away from home <sup>2</sup> .....	.436	127.369	130.091	2.3	2.1	-.8	.9	-1.3
Owners' equivalent rent of residences <sup>3 4</sup> .....	20.672	233.278	233.565	.5	.1	.1	.1	.1
Owners' equivalent rent of primary residence <sup>3 4</sup> .....	19.942	233.278	233.564	.5	.1	.1	.1	.1
Tenants' and household insurance <sup>1 2</sup> .....	.306	127.674	127.690	1.9	.0	.3	-.7	.0
Fuels and utilities .....	5.633	210.860	212.409	1.3	.7	-.3	.7	.0
Household energy .....	4.476	184.079	185.463	.3	.8	-.4	.8	.0
Fuel oil and other fuels <sup>1</sup> .....	.301	299.558	315.348	11.0	5.3	3.4	4.0	5.3
Energy services <sup>3</sup> .....	4.175	187.077	187.874	-.4	.4	-.7	.6	-.4
Water and sewer and trash collection services <sup>2</sup> .....	1.157	175.008	176.175	5.2	.7	.4	.5	.3
Household furnishings and operations .....	3.784	120.007	120.345	-2.4	.3	-.1	-.1	.1
Household operations <sup>1 2</sup> .....	.364	153.116	153.583	1.4	.3	.0	.2	.3
Apparel .....	3.668	117.127	115.649	-.6	-1.3	.0	.0	1.0
Men's and boys' apparel .....	.921	109.849	110.386	.4	.5	-.1	-.2	1.3
Women's and girls' apparel .....	1.502	104.988	101.701	-1.1	-3.1	.1	-.2	1.5
Infants' and toddlers' apparel .....	.280	115.832	113.268	-3.2	-2.2	1.1	.7	-2.1
Footwear .....	.750	125.691	125.474	-1.4	-.2	-1.0	-.1	.9
Transportation .....	19.418	197.832	200.635	5.9	1.4	.2	2.2	1.4
Private transportation .....	18.631	194.477	197.275	5.8	1.4	.2	2.3	1.4
New and used motor vehicles <sup>2</sup> .....	6.914	96.151	96.227	.8	.1	.0	-.1	-.2
New vehicles .....	3.320	139.567	139.871	.0	.2	-.2	-.1	-.2
Used cars and trucks .....	3.003	143.377	143.479	2.5	.1	-.1	-.1	-.3
Motor fuel .....	6.470	257.025	266.820	13.5	3.8	.5	6.7	3.9
Gasoline (all types) .....	6.193	256.443	266.224	13.4	3.8	.4	7.2	3.5
Motor vehicle parts and equipment <sup>1</sup> .....	.479	139.150	140.289	3.6	.8	.4	.4	.8
Motor vehicle maintenance and repair <sup>1</sup> .....	1.184	252.759	253.310	2.2	.2	.0	.1	.2
Public transportation .....	.787	254.312	256.604	7.0	.9	1.4	1.5	1.5
Medical care .....	5.355	393.616	395.536	3.2	.5	.2	.3	.1
Medical care commodities <sup>1</sup> .....	1.318	308.823	310.488	2.8	.5	.3	.2	.5
Medical care services .....	4.038	418.568	420.540	3.3	.5	.2	.3	-.1
Professional services .....	2.220	334.032	335.368	2.4	.4	.3	.1	.1

See footnotes at end of table.

**Table 4. Consumer Price Index for Urban Wage Earners and Clerical Workers (CPI-W): U.S. city average, by expenditure category and commodity and service group-Continued**

(1982-84=100, unless otherwise noted)

CPI-W	Relative importance, December 2010	Unadjusted indexes		Unadjusted percent change to Jan. 2011 from—		Seasonally adjusted percent change from—		
		Dec. 2010	Jan. 2011	Jan. 2010	Dec. 2010	Oct. to Nov.	Nov. to Dec.	Dec. to Jan.
<b>Expenditure category</b>								
Hospital and related services .....	1.414	623.692	628.321	7.0	0.7	0.1	0.8	-0.1
Recreation <sup>2</sup> .....	5.862	108.561	109.039	-.8	.4	-.3	-.3	.4
Video and audio <sup>2</sup> .....	1.959	97.753	97.925	-2.5	.2	-.1	-.7	.1
Education and communication <sup>2</sup> .....	6.118	125.089	125.065	.6	.0	.1	-.2	.0
Education <sup>2</sup> .....	2.380	200.496	201.353	4.3	.4	.4	.4	.6
Educational books and supplies .....	.199	515.937	526.152	4.5	2.0	.6	.6	1.6
Tuition, other school fees, and childcare .....	2.181	564.149	565.760	4.3	.3	.4	.4	.5
Communication <sup>2</sup> .....	3.738	86.472	86.209	-1.6	-.3	-.1	-.7	-.4
Information and information processing <sup>2</sup> .....	3.605	84.271	83.881	-1.8	-.5	-.1	-.7	-.5
Telephone services <sup>1 2</sup> .....	2.823	101.327	100.882	-1.6	-.4	-.2	-.6	-.4
Information technology, hardware and services <sup>5</sup> .....	.782	9.767	9.713	-2.7	-.6	-.1	-.9	-.8
Personal computers and peripheral equipment <sup>6</sup> .....	.208	73.078	72.433	-7.5	-.9	-.4	-2.2	-1.8
Other goods and services .....	3.950	414.002	414.263	2.4	.1	.2	.4	.1
Tobacco and smoking products <sup>1</sup> .....	1.450	832.741	832.904	5.2	.0	-.1	.9	.0
Personal care .....	2.500	205.084	205.264	.8	.1	.4	.2	.1
Personal care products <sup>1</sup> .....	.717	161.217	161.462	-.1	.2	.4	.3	.2
Personal care services <sup>1</sup> .....	.572	230.332	230.140	.6	-.1	.1	.2	-.1
Miscellaneous personal services .....	1.027	358.380	359.587	2.4	.3	.3	.3	.2
<b>Commodity and service group</b>								
Commodities .....	43.898	179.331	180.958	2.6	.9	.1	1.0	.9
Food and beverages .....	16.401	220.508	222.385	1.8	.9	.2	.1	.5
Commodities less food and beverages .....	27.497	156.997	158.473	3.0	.9	.1	1.5	1.2
Nondurables less food and beverages .....	17.244	203.292	206.142	5.2	1.4	.7	2.7	1.8
Apparel .....	3.668	117.127	115.649	-.6	-1.3	.0	.0	1.0
Nondurables less food, beverages, and apparel .....	13.576	261.243	266.785	6.8	2.1	.4	3.3	2.2
Durables .....	10.253	111.789	111.973	-.5	.2	-.4	.0	.0
Services .....	56.102	257.382	257.982	1.2	.2	.1	.1	.1
Rent of shelter <sup>4</sup> .....	29.504	234.278	234.715	.6	.2	.2	.2	.1
Tenants' and household insurance <sup>1 2</sup> .....	.306	127.674	127.690	1.9	.0	.3	-.7	.0
Energy services <sup>3</sup> .....	4.175	187.077	187.874	-.4	.4	-.7	.6	-.4
Water and sewer and trash collection services <sup>2</sup> .....	1.157	175.008	176.175	5.2	.7	.4	.5	.3
Household operations <sup>1 2</sup> .....	.364	153.116	153.583	1.4	.3	.0	.2	.3
Transportation services .....	5.994	263.648	264.313	3.4	.3	.3	.1	.4
Medical care services .....	4.038	418.568	420.540	3.3	.5	.2	.3	-.1
Other services .....	10.563	296.508	296.924	1.0	.1	.1	-.1	.1
<b>Special indexes</b>								
All items less food .....	84.685	214.225	215.215	1.8	.5	.1	.6	.4
All items less shelter .....	70.189	207.428	208.828	2.3	.7	.1	.7	.6
All items less medical care .....	94.645	208.036	209.141	1.7	.5	.1	.5	.5
Commodities less food .....	28.583	159.342	160.795	2.9	.9	.1	1.5	1.2
Nondurables less food .....	18.329	204.737	207.458	4.9	1.3	.7	2.5	1.7
Nondurables less food and apparel .....	14.662	257.051	262.134	6.4	2.0	.5	3.1	2.0
Nondurables .....	33.644	212.541	214.950	3.5	1.1	.5	1.4	1.2
Services less rent of shelter <sup>4</sup> .....	26.598	251.847	252.563	1.8	.3	.1	.2	.1
Services less medical care services .....	52.065	246.115	246.643	1.0	.2	.2	.2	.1
Energy .....	10.946	218.896	224.500	7.8	2.6	.1	4.2	2.3
All items less energy .....	89.054	215.786	216.389	1.1	.3	.1	.1	.2
All items less food and energy .....	73.739	215.303	215.627	.9	.2	-.1	.1	.2
Commodities less food and energy commodities .....	21.812	145.037	145.024	.0	.0	-.1	.0	.2
Energy commodities .....	6.771	260.026	270.105	13.4	3.9	.6	6.6	4.0
Services less energy services .....	51.927	265.062	265.639	1.3	.2	.2	.1	.1
Purchasing power of the consumer dollar (1982-84=\$1.00) .....	-	\$ .465	\$ .462	-	-	-	-	-
Purchasing power of the consumer dollar (1967=\$1.00) .....	-	\$ .156	\$ .155	-	-	-	-	-

<sup>1</sup> Not seasonally adjusted.

<sup>2</sup> Indexes on a December 1997=100 base.

<sup>3</sup> This index series was calculated using a Laspeyres estimator. All other item stratum index series were calculated using a geometric means estimator.

<sup>4</sup> Indexes on a December 1984=100 base

<sup>5</sup> Indexes on a December 1988=100 base.

<sup>6</sup> Indexes on a December 2007=100 base.

- Data not available.

NOTE: Index applies to a month as a whole, not to any specific date.



**Table 5. Consumer Price Index for Urban Wage Earners and Clerical Workers (CPI-W): Seasonally adjusted U.S. city average, by expenditure category and commodity and service group**

(1982-84=100, unless otherwise noted)

CPI-W	Seasonally adjusted indexes				Seasonally adjusted annual rate percent change for					
					3 months ended—			6 months ended—		
	Oct. 2010	Nov. 2010	Dec. 2010	Jan. 2011	Apr. 2010	July 2010	Oct. 2010	Jan. 2011	July 2010	Jan. 2011
<b>Expenditure category</b>										
All items .....	215.008	215.236	216.367	217.344	0.2	-0.2	3.0	4.4	0.0	3.7
Food and beverages .....	220.129	220.515	220.782	221.853	1.7	.2	2.3	3.2	.9	2.7
Food .....	219.665	220.065	220.351	221.486	1.8	.0	2.4	3.4	.9	2.9
Food at home .....	215.391	215.914	216.235	217.871	2.7	-.4	1.9	4.7	1.1	3.3
Cereals and bakery products .....	250.800	251.623	252.705	254.540	-1.6	-2.1	2.3	6.1	-1.8	4.2
Meats, poultry, fish, and eggs .....	211.478	212.375	211.826	213.732	8.6	7.5	4.9	4.3	8.0	4.6
Dairy and related products <sup>1</sup> .....	199.890	200.084	200.958	201.170	-3.4	3.8	4.3	2.6	.1	3.5
Fruits and vegetables .....	267.850	267.492	272.546	275.896	11.1	-14.3	2.2	12.6	-2.4	7.2
Nonalcoholic beverages and beverage materials .....	160.500	161.709	159.802	162.150	-.2	-1.4	-2.1	4.2	-.8	1.0
Other food at home .....	190.180	190.223	190.252	190.804	-.8	.2	-.2	1.3	-.3	.6
Sugar and sweets <sup>1</sup> .....	201.469	199.542	202.206	201.824	2.0	.4	3.3	.7	1.2	2.0
Fats and oils .....	202.128	203.735	202.870	207.171	.6	.0	3.9	10.4	.3	7.1
Other foods .....	203.933	204.121	203.773	203.965	-1.5	.3	-1.4	.1	-.6	-.7
Other miscellaneous foods <sup>1 2</sup> .....	121.806	120.723	122.267	121.161	2.2	-1.6	-1.3	-2.1	.3	-1.7
Food away from home <sup>1</sup> .....	227.412	227.634	227.871	228.279	.7	.6	3.1	1.5	.6	2.3
Other food away from home <sup>1 2</sup> .....	160.988	161.428	161.657	161.635	3.6	1.6	3.2	1.6	2.6	2.4
Alcoholic beverages .....	225.467	225.656	225.647	225.786	-.1	2.8	1.2	.6	1.3	.9
Housing .....	213.009	213.124	213.535	213.712	.0	-.1	.5	1.3	.0	.9
Shelter .....	242.631	242.968	243.290	243.522	-.2	.8	.5	1.5	.3	1.0
Rent of primary residence <sup>3</sup> .....	247.999	248.584	249.110	249.556	.1	.6	.5	2.5	.3	1.5
Lodging away from home <sup>2</sup> .....	135.817	134.716	135.916	134.166	6.4	17.5	-8.0	-4.8	11.8	-6.4
Owners' equivalent rent of residences <sup>3 4</sup> .....	232.736	233.011	233.235	233.453	-.5	.5	.6	1.2	.0	.9
Owners' equivalent rent of primary residence <sup>3 4</sup> .....	232.738	233.012	233.235	233.452	-.5	.5	.6	1.2	.0	.9
Tenants' and household insurance <sup>1 2</sup> .....	128.130	128.556	127.674	127.690	1.8	3.5	3.8	-1.4	2.7	1.2
Fuels and utilities .....	213.331	212.762	214.276	214.330	4.8	-3.0	1.8	1.9	.8	1.8
Household energy .....	187.154	186.318	187.766	187.675	4.3	-4.8	1.2	1.1	-.4	1.2
Fuel oil and other fuels <sup>1</sup> .....	278.516	287.994	299.558	315.348	-4.6	-22.7	25.3	64.3	-14.1	43.5
Energy services <sup>3</sup> .....	191.375	190.037	191.094	190.284	4.9	-3.5	-.2	-2.3	.6	-1.2
Water and sewer and trash collection services <sup>2</sup> .....	173.678	174.458	175.249	175.803	7.1	4.4	4.3	5.0	5.8	4.6
Household furnishings and operations .....	120.680	120.526	120.388	120.479	-5.3	-2.1	-1.6	-.7	-3.7	-1.1
Household operations <sup>1 2</sup> .....	152.729	152.778	153.116	153.583	2.2	3.5	-2.3	2.3	2.8	-.1
Apparel .....	118.154	118.143	118.126	119.268	-5.7	3.4	-3.5	3.8	-1.2	.1
Men's and boys' apparel .....	111.608	111.552	111.303	112.711	-4.8	6.2	-3.2	4.0	.5	.4
Women's and girls' apparel .....	105.512	105.650	105.468	107.067	-8.4	2.1	-3.6	6.0	-3.3	1.1
Infants' and toddlers' apparel .....	114.878	116.085	116.916	114.477	-1.9	9.2	-16.9	-1.4	3.5	-9.5
Footwear .....	127.694	126.414	126.296	127.404	-6.1	2.1	-.5	-.9	-2.1	-.7
Transportation .....	196.014	196.502	200.880	203.697	-1.0	-3.9	13.7	16.6	-2.5	15.1
Private transportation .....	192.771	193.154	197.516	200.277	-1.3	-4.1	14.2	16.5	-2.7	15.3
New and used motor vehicles <sup>2</sup> .....	96.513	96.488	96.431	96.217	2.0	2.7	-.1	-1.2	2.3	-.7
New vehicles .....	139.284	139.042	138.950	138.691	.5	-.9	.4	-1.7	.7	-.7
Used cars and trucks .....	144.920	145.103	145.000	144.598	5.1	6.0	-.2	-.9	5.6	-.5
Motor fuel .....	250.383	251.513	268.361	278.809	-10.0	-17.1	44.6	53.7	-13.6	49.1
Gasoline (all types) .....	249.942	250.858	268.977	278.404	-10.6	-17.4	45.2	53.9	-14.0	49.5
Motor vehicle parts and equipment <sup>1</sup> .....	138.153	138.654	139.150	140.289	1.6	3.9	2.8	6.3	2.7	4.5
Motor vehicle maintenance and repair <sup>1</sup> .....	252.546	252.610	252.759	253.310	3.1	.4	3.9	1.2	1.8	2.5
Public transportation .....	249.494	253.078	256.908	260.787	7.0	.6	2.1	19.4	3.8	10.4
Medical care .....	393.428	394.161	395.218	395.575	4.7	1.7	4.0	2.2	3.2	3.1
Medical care commodities <sup>1</sup> .....	307.539	308.332	308.823	310.488	5.7	-.5	2.3	3.9	2.6	3.1
Medical care services .....	418.870	419.554	420.827	420.595	4.4	2.5	4.5	1.7	3.4	3.1
Professional services .....	334.046	334.979	335.472	335.757	2.1	2.9	2.6	2.1	2.5	2.3

See footnotes at end of table.

**Table 5. Consumer Price Index for Urban Wage Earners and Clerical Workers (CPI-W): Seasonally adjusted U.S. city average, by expenditure category and commodity and service group-Continued**

(1982-84=100, unless otherwise noted)

CPI-W	Seasonally adjusted indexes				Seasonally adjusted annual rate percent change for					
					3 months ended—			6 months ended—		
	Oct. 2010	Nov. 2010	Dec. 2010	Jan. 2011	Apr. 2010	July 2010	Oct. 2010	Jan. 2011	July 2010	Jan. 2011
<b>Expenditure category</b>										
Hospital and related services .....	622.297	623.224	628.241	627.317	10.8	4.3	9.9	3.3	7.5	6.5
Recreation <sup>2</sup> .....	109.510	109.234	108.943	109.345	-5	-8	-1.5	-6	-6	-1.1
Video and audio <sup>2</sup> .....	99.210	99.092	98.429	98.510	-3.8	-2.6	-9	-2.8	-3.2	-1.8
Education and communication <sup>2</sup> .....	125.155	125.259	124.955	124.959	1.9	1.3	-1	-6	1.6	-4
Education <sup>2</sup> .....	198.117	199.002	199.846	200.978	5.8	4.4	1.1	5.9	5.1	3.5
Educational books and supplies .....	510.572	513.501	516.326	524.385	3.5	3.0	.7	11.3	3.2	5.8
Tuition, other school fees, and childcare .....	557.377	559.803	562.114	564.783	6.0	4.6	1.2	5.4	5.3	3.3
Communication <sup>2</sup> .....	87.200	87.075	86.499	86.192	-4	-5	-9	-4.5	-5	-2.7
Information and information processing <sup>2</sup> .....	85.009	84.882	84.299	83.864	-4	-5	-9	-5.3	-5	-3.1
Telephone services <sup>1 2</sup> .....	102.135	101.975	101.327	100.882	-1.4	.2	-2	-4.8	-6	-2.5
Information technology, hardware and services <sup>5</sup> .....	9.880	9.868	9.782	9.704	3.2	-3.1	-3.4	-6.9	.0	-5.2
Personal computers and peripheral equipment <sup>6</sup> .....	75.439	75.142	73.494	72.178	-3.6	-5.5	-3.9	-16.2	-4.6	-10.3
Other goods and services .....	411.610	412.455	414.260	414.533	.2	6.8	-2	2.9	3.5	1.3
Tobacco and smoking products <sup>1</sup> .....	826.468	825.644	832.741	832.904	.7	16.5	1.1	3.2	8.3	2.1
Personal care .....	204.107	204.886	205.285	205.476	.0	1.7	-1.0	2.7	.8	.8
Personal care products <sup>1</sup> .....	160.174	160.801	161.217	161.462	-2	-5	-3.0	3.3	-3	.1
Personal care services <sup>1</sup> .....	229.635	229.855	230.332	230.140	1.9	1.6	-2.0	.9	1.7	-5
Miscellaneous personal services .....	357.563	358.618	359.558	360.275	2.4	1.9	2.1	3.1	2.1	2.6
<b>Commodity and service group</b>										
Commodities .....	178.823	179.007	180.813	182.495	-1.4	-1.9	5.8	8.5	-1.7	7.1
Food and beverages .....	220.129	220.515	220.782	221.853	1.7	.2	2.3	3.2	.9	2.7
Commodities less food and beverages .....	156.447	156.541	158.952	160.848	-3.2	-3.2	7.9	11.7	-3.2	9.8
Nondurables less food and beverages .....	200.796	202.225	207.594	211.319	-7.5	-4.9	13.5	22.7	-6.2	18.0
Apparel .....	118.154	118.143	118.126	119.268	-5.7	3.4	-3.5	3.8	-1.2	.1
Nondurables less food, beverages, and apparel .....	257.451	258.599	267.257	273.060	-7.6	-7.1	19.7	26.5	-7.3	23.1
Durables .....	112.421	111.936	111.888	111.840	.3	1.3	-1.4	-2.1	.8	-1.7
Services .....	257.419	257.663	258.034	258.262	1.5	1.0	.9	1.3	1.3	1.1
Rent of shelter <sup>4</sup> .....	233.844	234.338	234.729	234.950	-8	.2	1.1	1.9	-3	1.5
Tenants' and household insurance <sup>1 2</sup> .....	128.130	128.556	127.674	127.690	1.8	3.5	3.8	-1.4	2.7	1.2
Energy services <sup>3</sup> .....	191.375	190.037	191.094	190.284	4.9	-3.5	-2	-2.3	.6	-1.2
Water and sewer and trash collection services <sup>2</sup> .....	173.678	174.458	175.249	175.803	7.1	4.4	4.3	5.0	5.8	4.6
Household operations <sup>1 2</sup> .....	152.729	152.778	153.116	153.583	2.2	3.5	-2.3	2.3	2.8	-1
Transportation services .....	262.227	263.053	263.406	264.463	5.0	2.2	3.1	3.5	3.6	3.3
Medical care services .....	418.870	419.554	420.827	420.595	4.4	2.5	4.5	1.7	3.4	3.1
Other services .....	296.818	297.133	296.889	297.247	1.6	2.1	-2	.6	1.8	.2
<b>Special indexes</b>										
All items less food .....	213.996	214.194	215.473	216.422	-1	-3	3.1	4.6	-2	3.9
All items less shelter .....	207.256	207.446	208.883	210.141	.4	-7	4.1	5.7	-1	4.9
All items less medical care .....	207.782	207.992	209.116	210.104	.0	-3	3.0	4.5	-2	3.7
Commodities less food .....	158.802	158.899	161.252	163.108	-3.1	-3.0	7.7	11.3	-3.0	9.5
Nondurables less food .....	202.259	203.719	208.830	212.360	-7.0	-4.5	12.4	21.5	-5.8	16.9
Nondurables less food and apparel .....	253.352	254.639	262.540	267.850	-7.0	-6.4	17.8	24.9	-6.7	21.3
Nondurables .....	210.804	211.911	214.836	217.332	-2.4	-2.9	7.3	13.0	-2.6	10.1
Services less rent of shelter <sup>4</sup> .....	252.390	252.590	253.116	253.273	3.5	.9	1.5	1.4	2.2	1.5
Services less medical care services .....	246.090	246.514	246.935	247.082	1.0	.6	1.0	1.6	.8	1.3
Energy .....	217.048	217.210	226.396	231.611	-4.2	-11.9	24.0	29.7	-8.1	26.8
All items less energy .....	215.724	215.961	216.122	216.590	.7	1.2	.8	1.6	1.0	1.2
All items less food and energy .....	215.309	215.513	215.648	215.982	.5	1.5	.4	1.3	1.0	.8
Commodities less food and energy commodities .....	145.635	145.547	145.475	145.784	-1.2	1.6	-9	.4	.2	-3
Energy commodities .....	252.793	254.251	270.984	281.694	-9.8	-17.3	43.7	54.2	-13.6	48.9
Services less energy services .....	264.613	265.038	265.330	265.675	1.3	1.4	1.0	1.6	1.4	1.3

<sup>1</sup> Not seasonally adjusted.

<sup>2</sup> Indexes on a December 1997=100 base.

<sup>3</sup> This index series was calculated using a Laspeyres estimator. All other item stratum index series were calculated using a geometric means estimator.

<sup>4</sup> Indexes on a December 1984=100 base

<sup>5</sup> Indexes on a December 1988=100 base.

<sup>6</sup> Indexes on a December 2007=100 base.

NOTE: Index applies to a month as a whole, not to any specific date.

**Table 6. Consumer Price Index for Urban Wage Earners and Clerical Workers (CPI-W): Selected areas, all items index**

(1982-84=100, unless otherwise noted)

CPI-W	Pricing schedule 1	All items									
		Indexes				Percent change to Jan.2011 from—			Percent change to Dec.2010 from—		
		Oct. 2010	Nov. 2010	Dec. 2010	Jan. 2011	Jan. 2010	Nov. 2010	Dec. 2010	Dec. 2009	Oct. 2010	Nov. 2010
U.S. city average .....	M	214.623	214.750	215.262	216.400	1.8	0.8	0.5	1.7	0.3	0.2
<b>Region and area size<sup>2</sup></b>											
Northeast urban .....	M	232.396	232.962	233.082	233.914	1.8	.4	.4	1.9	.3	.1
Size A - More than 1,500,000 .....	M	232.672	233.031	233.092	233.851	1.7	.4	.3	1.7	.2	.0
Size B/C - 50,000 to 1,500,000 <sup>3</sup> .....	M	140.848	141.452	141.598	142.196	2.0	.5	.4	2.2	.5	.1
Midwest urban .....	M	204.329	204.468	205.024	206.258	2.0	.9	.6	2.0	.3	.3
Size A - More than 1,500,000 .....	M	203.906	204.064	204.731	205.878	1.9	.9	.6	1.9	.4	.3
Size B/C - 50,000 to 1,500,000 <sup>3</sup> .....	M	134.093	134.112	134.454	135.277	2.1	.9	.6	2.1	.3	.3
Size D - Nonmetropolitan (less than 50,000) .....	M	203.548	203.937	204.132	205.648	2.1	.8	.7	1.8	.3	.1
South urban .....	M	209.376	209.352	209.994	211.216	1.8	.9	.6	1.6	.3	.3
Size A - More than 1,500,000 .....	M	211.409	211.222	211.712	213.058	1.6	.9	.6	1.4	.1	.2
Size B/C - 50,000 to 1,500,000 <sup>3</sup> .....	M	133.923	133.927	134.405	135.207	2.0	1.0	.6	1.7	.4	.4
Size D - Nonmetropolitan (less than 50,000) .....	M	215.451	215.822	216.477	217.200	1.5	.6	.3	1.5	.5	.3
West urban .....	M	216.273	216.267	216.847	217.995	1.6	.8	.5	1.4	.3	.3
Size A - More than 1,500,000 .....	M	219.017	218.817	219.273	220.564	1.7	.8	.6	1.5	.1	.2
Size B/C - 50,000 to 1,500,000 <sup>3</sup> .....	M	133.622	133.777	134.306	134.900	1.2	.8	.4	1.0	.5	.4
<b>Size classes</b>											
A <sup>4</sup> .....	M	198.576	198.598	198.979	200.022	1.7	.7	.5	1.6	.2	.2
B/C <sup>3</sup> .....	M	134.840	134.969	135.379	136.112	1.9	.8	.5	1.7	.4	.3
D .....	M	210.160	210.529	210.959	212.005	1.8	.7	.5	1.7	.4	.2
<b>Selected local areas<sup>5</sup></b>											
Chicago-Gary-Kenosha, IL-IN-WI .....	M	206.894	206.632	207.479	209.016	1.7	1.2	.7	1.6	.3	.4
Los Angeles-Riverside-Orange County, CA ...	M	219.339	218.694	219.619	221.540	2.0	1.3	.9	1.6	.1	.4
New York-Northern N.J.-Long Island, NY-NJ-CT-PA .....	M	237.483	237.606	237.575	238.396	1.8	.3	.3	1.8	.0	.0
Boston-Brockton-Nashua, MA-NH-ME-CT ....	1	-	238.891	-	240.540	1.1	.7	-	-	-	-
Cleveland-Akron, OH .....	1	-	197.530	-	199.568	2.6	1.0	-	-	-	-
Dallas-Fort Worth, TX .....	1	-	204.918	-	206.954	.7	1.0	-	-	-	-
Washington-Baltimore, DC-MD-VA-WV <sup>6</sup> .....	1	-	142.938	-	144.556	2.4	1.1	-	-	-	-
Atlanta, GA .....	2	201.887	-	201.390	-	-	-	-	1.0	-.2	-
Detroit-Ann Arbor-Flint, MI .....	2	201.864	-	202.280	-	-	-	-	1.3	.2	-
Houston-Galveston-Brazoria, TX .....	2	193.110	-	192.863	-	-	-	-	2.1	-.1	-
Miami-Fort Lauderdale, FL .....	2	221.497	-	222.510	-	-	-	-	.7	.5	-
Philadelphia-Wilmington-Atlantic City, PA-NJ-DE-MD .....	2	228.676	-	228.072	-	-	-	-	1.5	-.3	-
San Francisco-Oakland-San Jose, CA .....	2	224.352	-	224.152	-	-	-	-	1.8	-.1	-
Seattle-Tacoma-Bremerton, WA .....	2	223.112	-	222.853	-	-	-	-	.9	-.1	-

<sup>1</sup> Foods, fuels, and several other items priced every month in all areas; most other goods and services priced as indicated:

M - Every month.

1 - January, March, May, July, September, and November.

2 - February, April, June, August, October, and December.

<sup>2</sup> Regions defined as the four Census regions. See technical notes.

<sup>3</sup> Indexes on a December 1996=100 base.

<sup>4</sup> Indexes on a December 1986=100 base.

<sup>5</sup> In addition, the following metropolitan areas are published semiannually and appear in Tables 34 and 39 of the January and July issues of the CPI Detailed Report: Anchorage, AK; Cincinnati-Hamilton, OH-KY-IN; Denver-Boulder-Greeley, CO; Honolulu, HI; Kansas City, MO-KS; Milwaukee-Racine, WI; Minneapolis-St. Paul, MN-WI; Phoenix-Mesa, AZ; Pittsburgh, PA; Portland-Salem, OR-WA; St. Louis, MO-IL; San Diego, CA;

Tampa-St. Petersburg-Clearwater, FL.

<sup>6</sup> Indexes on a November 1996=100 base.

- Data not available.

NOTE: Local area indexes are byproducts of the national CPI program. Each local index has a smaller sample size than the national index and is, therefore, subject to substantially more sampling and other measurement error. As a result, local area indexes show greater volatility than the national index, although their long-term trends are similar. Therefore, the Bureau of Labor Statistics strongly urges users to consider adopting the national average CPI for use in their escalator clauses.

NOTE: Index applies to a month as a whole, not to any specific date.

**Table 7. Chained Consumer Price Index for All Urban Consumers (C-CPI-U): U.S. city average, by expenditure category and commodity and service group**

(December 1999=100, unless otherwise noted)

C-CPI-U	Relative importance, 2007-2008	Unadjusted indexes		Unadjusted percent change to Jan. 2011 from—	
		Dec. 2010	Jan. 2011	Jan. 2010	Dec. 2010
		Expenditure category			
All items .....	100.000	126.228	<sup>R</sup> 126.811	1.5	0.5
Food and beverages .....	14.519	128.814	129.897	1.7	.8
Food .....	13.493	128.840	129.971	1.8	.9
Food at home .....	7.780	123.560	125.260	2.1	1.4
Food away from home .....	5.712	136.196	136.473	1.4	.2
Alcoholic beverages .....	1.027	129.155	129.622	1.1	.4
Housing .....	42.074	128.047	128.403	.2	.3
Shelter .....	32.119	131.430	131.696	.6	.2
Fuels and utilities .....	5.231	156.201	157.336	.8	.7
Household furnishings and operations .....	4.724	91.857	92.128	-2.8	.3
Apparel .....	3.772	88.735	87.458	-.4	-1.4
Transportation .....	17.199	133.545	<sup>R</sup> 135.346	5.6	1.3
Private transportation .....	16.013	134.136	135.961	5.4	1.4
Public transportation .....	1.186	125.956	<sup>R</sup> 127.460	8.0	1.2
Medical care .....	6.294	151.713	152.417	2.7	.5
Medical care commodities .....	1.570	133.694	134.398	2.6	.5
Medical care services .....	4.723	158.330	159.032	2.7	.4
Recreation .....	6.625	101.823	102.062	-1.4	.2
Education and communication .....	6.288	112.725	112.730	.8	.0
Education .....	2.804	187.638	188.254	4.1	.3
Communication .....	3.484	72.018	71.834	-1.8	-.3
Other goods and services .....	3.229	140.044	140.089	1.5	.0
<b>Commodity and service group</b>					
Services .....	59.383	135.843	<sup>R</sup> 136.170	1.1	.2
Commodities .....	40.617	114.639	115.538	2.0	.8
Durables .....	10.376	80.097	80.179	-1.6	.1
Nondurables .....	30.241	132.606	133.958	3.2	1.0
All items less food and energy .....	76.901	120.105	<sup>R</sup> 120.281	.7	.1
Energy .....	9.606	185.738	190.231	7.2	2.4

<sup>R</sup> Revised.

Indexes for 2011 are initial estimates. Indexes for 2010 are interim adjustments.

NOTE: Index applies to a month as a whole, not to any specific date.