



# PURCHASING WITH SAFETY IN MIND

What to look for when buying a vehicle

**DOT Vehicle Safety Hotline**  
888-327-4236  
TDD 800-424-9153

**NHTSA**  
1200 New Jersey Avenue SE.  
Washington, DC 20590



**DOT Vehicle Safety Hotline**

888-327-4236

TDD 800-424-9153

**NHTSA**

1200 New Jersey Avenue SE.

Washington, DC 20590

**THINK YOUR VEHICLE HAS A SAFETY DEFECT?**

Defects in vehicle components can be deadly, and need to be recognized and corrected quickly. Information from the public helps us to determine whether a vehicle safety defect recall campaign should be started. If a vehicle safety defect exists, the manufacturer must fix it free of charge!

**Visit** | [www.SaferCar.gov](http://www.SaferCar.gov)

**Call** | 888-327-4236

**Mail** | NHTSA | Office of Defects Investigation | 1200 New Jersey Avenue SE. | Washington, DC 20590

**All complaints are carefully reviewed by our team of safety experts. We welcome your input.**

For the latest information on crash test and rollover ratings and other important vehicle safety information, visit **[www.SaferCar.gov](http://www.SaferCar.gov)** or call the hotline at 888-327-4236.

PURCHASING WITH SAFETY IN MIND

FOR MORE INFORMATION



# CONTENTS

Government 5-Star Safety Ratings Program .....	2
Enhancements to the 5-Star Safety Ratings Program .....	4
Introducing the Overall Vehicle Score .....	7
Safety Tests.....	8
The Frontal Crash Test.....	9
The Side Barrier Crash Test.....	9
The Side Pole Crash Test .....	9
The Rollover Resistance Test .....	9
Safety Features .....	10
Advanced Crash Avoidance Technologies .....	10
Other Safety Equipment .....	11
Key Safety Milestones.....	12
For More Information .....	13

## GOVERNMENT 5-STAR SAFETY RATINGS PROGRAM

The National Highway Traffic Safety Administration (NHTSA) is the agency of the U.S. Department of Transportation that conducts safety tests to determine how well new vehicles protect drivers and passengers during a crash, how well vehicles resist rollovers, and whether vehicles are equipped with technology that can help avoid crashes altogether.

Each year, NHTSA tests new passenger cars, pickup trucks, sport utility vehicles (SUVs) and vans, as well as models that were previously rated but have undergone major design changes or include new advanced safety features. These vehicles are then rated using the 5-Star Safety Ratings system. Five stars indicate the highest safety rating and one star the lowest.

Although it is impossible to determine how well vehicles protect drivers and passengers in all types of crashes, star ratings are a useful way to compare the relative safety of different vehicles. Keep in mind that the majority of injury-causing crashes that occur each year on America's roadways are either frontal or side crashes. More than one-quarter of passenger vehicle crash deaths occur in rollovers.

The results of these tests, along with information about the 5-Star Safety Ratings Program and vehicle safety features are available in this brochure. And remember: more stars mean safer cars.

Check out page 12 for a quick snapshot of NHTSA's vehicle testing and rating milestones over the years.

The latest Government 5-Star Safety Ratings and vehicle safety information can always be found at [www.SaferCar.gov](http://www.SaferCar.gov).



## ENHANCEMENTS TO THE 5-STAR SAFETY RATINGS PROGRAM

NHTSA continued to drive the development of safer vehicles by introducing enhancements to the 5-Star Safety Ratings Program beginning with model year 2011 vehicles. Enhancements such as tougher and more stringent ratings criteria and recommended crash avoidance technologies provide incentives for manufacturers to continuously improve driver and passenger protection and educate consumers so they can make more informed buying decisions.

With new, more rigorous tests and more comprehensive crash data, NHTSA's 5-Star Safety Ratings Program enhancements encourage consumers to think "SAFER":

Side impact test  
simulating a 20-mph  
crash into a pole

S

Advanced  
crash avoidance  
technology features

A

Full injury assessment  
measuring injury  
to additional areas  
of the body

F

Evaluating vehicles is  
simple with an Overall  
Vehicle Score

E

Representative crash  
test dummies

R



Below are specific differences between the old and enhanced ratings system. The changes in the enhanced ratings are effective for model year 2011 vehicles and beyond.

### 1990-2010 RATINGS

- >> Medium-sized adult male crash test dummies
- >> Individual ratings for frontal crash, side crash and rollover resistance tests

### ENHANCED RATINGS

- >> New advanced medium-sized adult male dummy
- >> New dummies representing small-sized adult females
- >> Combined safety rating: Overall Vehicle Score
- >> New side pole crash test
- >> More stringent ratings and injury criteria addressing additional body regions
- >> New recommended advanced crash avoidance technology features information



## INTRODUCING THE OVERALL VEHICLE SCORE

One of the enhancements to the 5-Star Safety Ratings Program is the addition of the Overall Vehicle Score. The results of the frontal crash test, side crash tests and rollover resistance test have been combined into one score that indicates the overall risk of injury to a vehicle occupant if the vehicle is involved in a crash. In most cases, each vehicle that is evaluated will receive an Overall Vehicle Score ranging from 1 to 5 stars, with 1 star being the lowest and 5 stars being the highest. The more stars a vehicle has, the safer it is – more stars mean safer cars.

*Note: A description of each safety test can be found in the pages that follow.*

### Calculating the Overall Vehicle Score

The Overall Vehicle Score is based on the tests for frontal and side crash safety and rollover resistance. It indicates how it compares to the projected average Overall Vehicle Score of other passenger vehicles on the road.

A vehicle with a 3-Star Overall Vehicle Score has about the same relative safety as the passenger vehicle fleet average. A vehicle with a 4- or 5-Star provides more injury protection than a vehicle with a 1-, 2- or 3-Star Overall Vehicle Score.

Ratings derived from frontal, side barrier, side pole crash tests, and rollover resistance tests are also determined based on the projected average relative safety of the passenger vehicle fleet.

*Note: A vehicle's Overall Vehicle Score can be compared with other vehicles of similar size and weight and whose weights differ by no more than 250 pounds.*

### The 5-Star Safety Ratings Label

The window sticker on a new vehicle, also called the Monroney Label, is nothing new to consumers, but the 5-Star Safety Ratings portion of the sticker is. This portion of the sticker now presents consumers with frontal crash, side crash, and rollover resistance safety ratings based on tougher testing and rating criteria.



# SAFETY TESTS

The goal of the 5-Star Safety Ratings Program is to help consumers make smart decisions about safety when purchasing a vehicle. NHTSA conducts three independent crash tests and a rollover resistance test on vehicles and uses a 5-Star rating system for assigning vehicle scores where more stars mean safer cars.

## The Frontal Crash Test

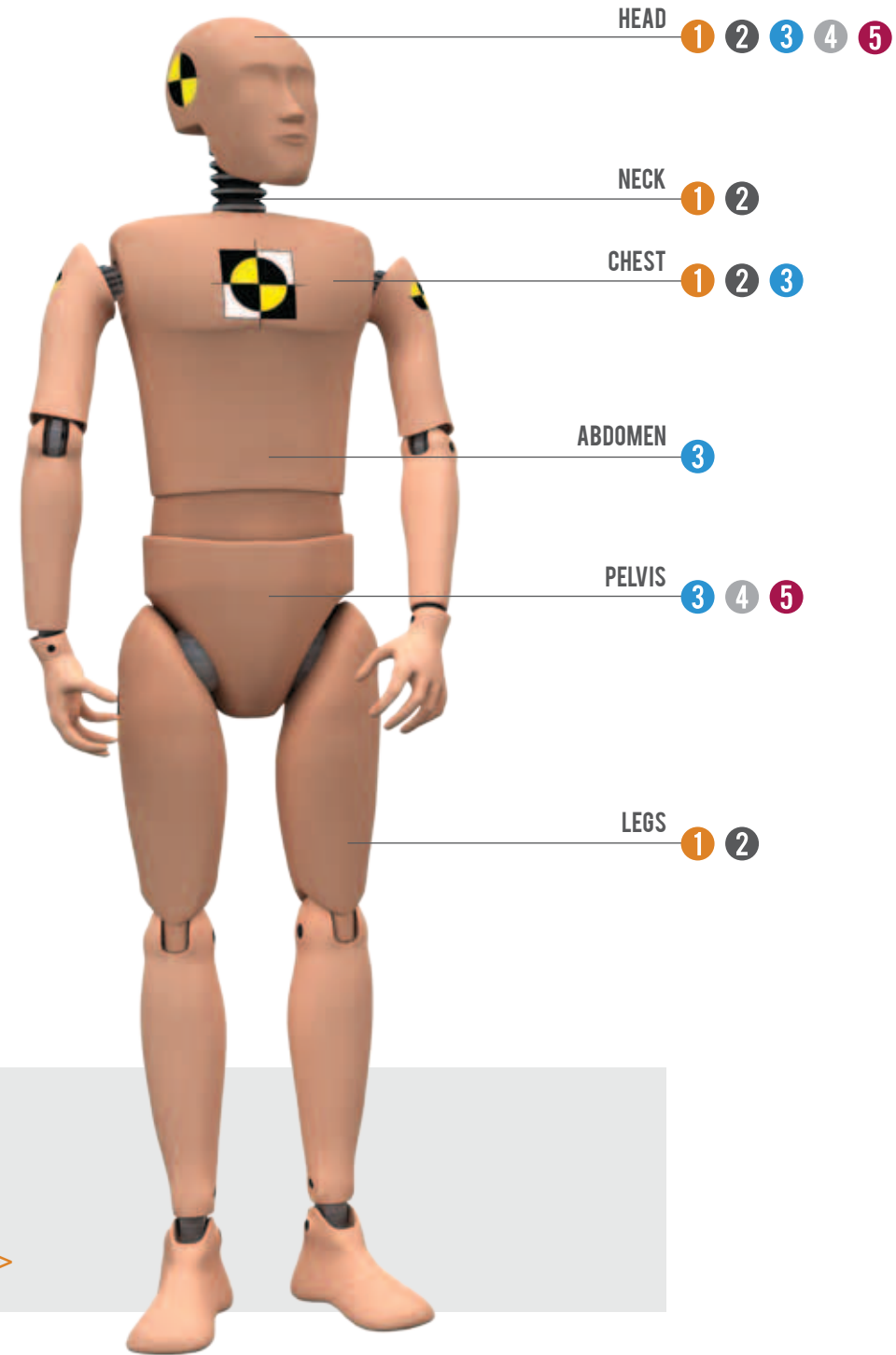
- 1 Average-sized adult male dummy (Driver)
- 2 Small-sized adult female dummy (Front passenger)

## The Side Barrier Crash Test

- 3 Average-sized adult male dummy (Driver)
- 4 Small-sized adult female dummy (Rear passenger)

## The Side Pole Crash Test

- 5 Small-sized adult female dummy (Driver)



This image points to the parts of the body where data is collected when performing safety tests >>

## The Frontal Crash Test

>> Picture this scenario: You, the driver, are heading south on a two-lane road, while another vehicle is driving north on the same street. The driver in the northbound vehicle starts to fall asleep at the wheel and veers into your lane. Suddenly, you collide head-on with the northbound vehicle. NHTSA's frontal test simulates this type of crash.

*Note: The frontal crash ratings of a vehicle, like the Overall Vehicle Score, can only be compared to those of other vehicles of similar size and weight. These weights may not differ by more than 250 pounds.*

## The Side Barrier Crash Test

>> Picture this scenario: You pull up to a four-way intersection and make a complete stop, look to your left and right and begin to accelerate into the intersection. Another vehicle approaches the same intersection, but doesn't yield at the stop sign and hits your vehicle on the driver's side. NHTSA's side barrier test simulates this type of crash.

## The Side Pole Crash Test

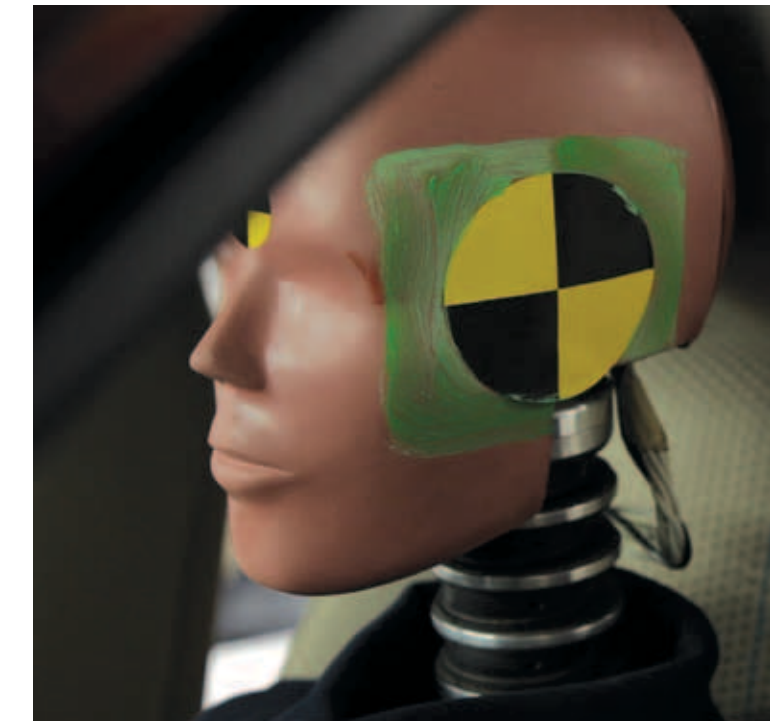
>> Picture this scenario: On a rainy afternoon, you're driving down a curved street in your neighborhood. All of a sudden, you lose control of the vehicle. You start sliding on the road sideways and crash into a telephone pole on the driver's side. NHTSA's side pole test simulates this type of crash.

In each of the crash tests described above, readings from crash test dummies indicate the seriousness of the injuries that would occur to vehicle occupants in the type of crash involved.

## The Rollover Resistance Test

>> Picture this scenario: You're driving your SUV on a 55-mph highway and suddenly you come upon a sharp curve. You try to navigate the curve, but you're traveling too fast and losing control of your vehicle, and your vehicle departs the road and rolls over. NHTSA's rollover resistance test measures the risk of rollover in this single-vehicle, loss-of-control scenario.

Each year, more than 8,000 people die in rollover crashes and nearly 85 percent of such fatalities occur in single-vehicle crashes. The rollover test conducted by NHTSA determines how well a vehicle resists rolling over in severe turning maneuvers. While the ratings do not predict the likelihood of being involved in a single-vehicle crash, vehicles with a higher number of stars are less likely to roll over if faced with this scenario.



# SAFETY FEATURES

## 1 Advanced Crash Avoidance Technologies

Beginning with model year 2011, NHTSA identifies on its website, [www.SaferCar.gov](http://www.SaferCar.gov), vehicles equipped with any of three recommended crash avoidance technologies that meet the agency's established requirements. These technologies, Electronic Stability Control (ESC), Forward Collision Warning (FCW), and Lane Departure Warning (LDW), can help drivers avoid crashes. >>

Below are the advanced crash avoidance technologies and their safety benefits that NHTSA recommends as part of its enhanced 5-Star Safety Ratings Program:

### Electronic Stability Control (ESC)

- >> Senses when your vehicle is starting to lose control and helps you maintain control during extreme maneuvers
- >> Automatically applies the brake to one or more of the wheels to turn your vehicle to the appropriate direction

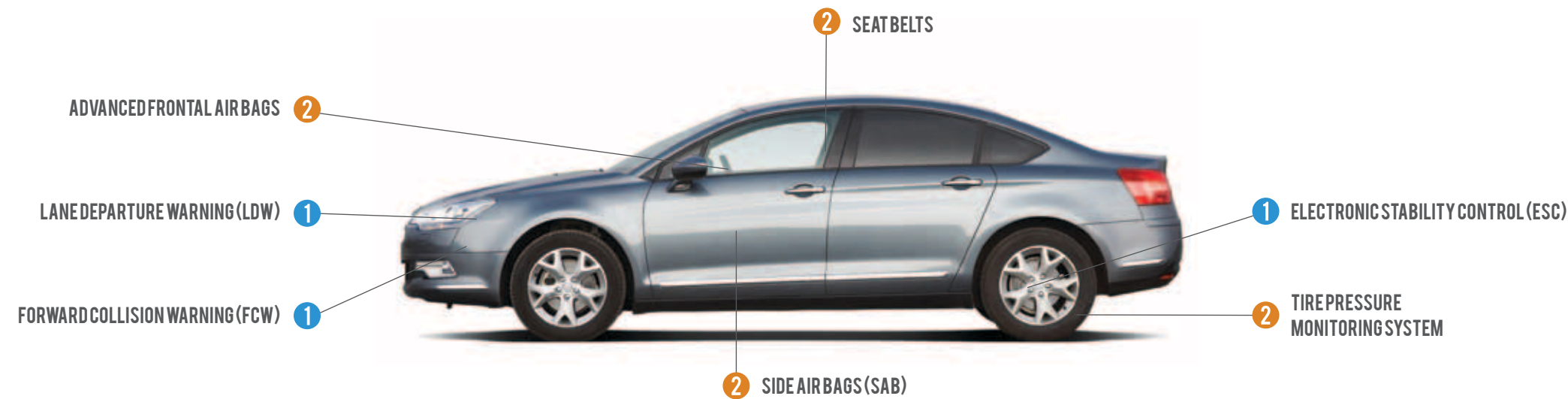
*Note: ESC cannot keep your vehicle on the road if the vehicle's speed is simply too great for the conditions.*

### Forward Collision Warning (FCW)

- >> Alerts you when your vehicle is getting too close to another vehicle, allowing you to brake or steer, which can help avoid a crash

### Lane Departure Warning (LDW)

- >> Senses and monitors lane markings
- >> Warns you when your vehicle is unintentionally drifting to another lane, or leaving the road altogether, potentially allowing you to steer back into your lane



## 2 Other Safety Equipment

Vehicle manufacturers realize that today's consumers are looking for safety and reliability when shopping for a new vehicle. Below are descriptions of the safety features available on many new vehicles:

### Seat belts

- >> Keeps you and your passengers in the vehicle and reduces the risk of hitting the steering wheel, dashboard or windshield during a crash
- >> It is recommended for you, the new buyer, to test a vehicle's seat belts to ensure their accessibility and proper fit
- >> Enhanced seat belt reminder systems encourage you and your passengers to wear your seat belts

### Advanced frontal air bags

- >> Prevents you and your passengers from hitting the steering wheel, dashboard or windshield
- >> Sensors may detect the severity of the crash, your size and that of your passengers, and whether seat belts are in use and at what seating positions so that the appropriate level of air bag protection can be provided

### Side air bags (SAB)

- >> Protects you and your passengers' head, chest, and in some cases, pelvis when sitting on the struck side of a side-impact crash

### Tire Pressure Monitoring System

- >> Under-inflation is among the leading causes of tire failure and affects many different types of crashes. This safety feature alerts you with a warning light on the dashboard when any of the vehicle's tires are significantly under-inflated

<< Given their anticipated safety benefits to help drivers avoid crashes, NHTSA encourages consumers to purchase vehicles with advanced crash avoidance technologies.

A more comprehensive list of a vehicle's available features can be obtained from the manufacturer or found by visiting the **Government 5-Star Safety Ratings** section of [www.SaferCar.gov](http://www.SaferCar.gov) and searching for the desired vehicle make and model.





## KEY SAFETY MILESTONES

**1978**

NHTSA began testing vehicles for **frontal impact** protection.

**1993**

NHTSA began using the **5-Star Safety Ratings system** to assign safety scores based on the level of occupant protection a vehicle provides.

**1996**

NHTSA began testing and rating vehicles for **side impact protection**.

**2000**

NHTSA began testing and rating vehicles for **rollover resistance** based on a static measurement of a vehicle's track width and the height of its center of gravity.

**2003**

NHTSA **updated the rollover program** to include a dynamic test that measures untripped rollovers.

**2004**

NHTSA launched a new website, **www.SaferCar.gov**, to provide consumers with vehicle safety information.

**2006**

NHTSA began requiring vehicle manufacturers to include **safety rating information on the vehicle window sticker**, also known as the Monroney label.

**2008**

NHTSA **announced the most significant changes in the history of the NCAP program**, including the addition of a new side pole test, improved crash test dummies, more stringent ratings criteria, and the identification of vehicles equipped with advanced crash avoidance technologies that meet NHTSA's performance criteria.

**2010**

NHTSA **implemented the enhanced NCAP program beginning with model year 2011** and provided the safety ratings of tested vehicles and vehicles equipped with advanced crash avoidance technologies on [www.SaferCar.gov](http://www.SaferCar.gov).



# PURCHASING WITH SAFETY IN MIND

MAKE	MODEL	Body Style	RATINGS									SAFETY FEATURES		
			Frontal Crash (Driver)	Frontal Crash (Passenger)	Overall Frontal	Side Barrier (Driver)	Side Barrier (Passenger—Rear Seat)	Side Pole (Driver)	Overall Side	Rollover	Overall Vehicle Score	Lane Departure Warning	Forward Collision Warning	Electronic Stability Control
Acura	MDX	SUV	★★★★★	★★★★	★★★★	★★★★★ <sup>Δ</sup>	★★★★★ <sup>Δ</sup>	★★★★★	★★★★★ <sup>Δ</sup>	★★★★	★★★★★ <sup>Δ</sup>		0	S
	RL	4 DR	NR	NR	NR	NR	NR	NR	NR	★★★★	NR		0	S
	ZDX	SUV	NR	NR	NR	NR	NR	NR	NR	★★★★	NR		0	S
Audi	A4 Avant Wagon AWD	SW	★★★	★★★★	★★★★	★★★★	★★★★★	★★★★★	★★★★★	★★★★★	★★★★			S
	A4 AWD	4 DR	★★★	★★★★	★★★★	★★★★	★★★★★	★★★★★	★★★★★	★★★★★	★★★★			S
	A4 FWD	4 DR	★★★	★★★★	★★★★	★★★★	★★★★★	★★★★★	★★★★★	★★★★★	★★★★			S
	S4 Avant Wagon AWD	SW	★★★	★★★★	★★★★	★★★★	★★★★★	★★★★★	★★★★★	★★★★★	★★★★			S
	S4 AWD	4 DR	★★★	★★★★	★★★★	★★★★	★★★★★	★★★★★	★★★★★	★★★★★	★★★★			S
	S4 FWD	4 DR	★★★	★★★★	★★★★	★★★★	★★★★★	★★★★★	★★★★★	★★★★★	★★★★			S
BMW	5 Series 4WD	4 DR	★★★★	★★★★	★★★★	★★★★★	★★★★★	★★★★★	★★★★★	★★★★★	★★★★★	0	0	S
	5 Series RWD	4 DR	★★★★	★★★★	★★★★	★★★★★	★★★★★	★★★★★	★★★★★	★★★★★	★★★★★	0	0	S
	7 Series	4 DR	NR	NR	NR	NR	NR	NR	NR	NR	NR	0	0	S
	7 Series Hybrid	4 DR	NR	NR	NR	NR	NR	NR	NR	NR	NR	0		S
	X5 Series	SUV	NR	NR	NR	NR	NR	NR	NR	NR	NR	0		S
	X6 Series	SUV	NR	NR	NR	NR	NR	NR	NR	NR	NR	0		S
Buick	Enclave AWD	SUV	★★★★★	★★★★	★★★★	★★★★★	★★★★★	★★★★★	★★★★★	★★★★	★★★★★			S
	Enclave FWD	SUV	★★★★★	★★★★	★★★★	★★★★★	★★★★★	★★★★★	★★★★★	★★★★	★★★★★			S
	Lacrosse AWD	4 DR	★★★★★	★★★★★	★★★★★	★★★★★	★★★★	★★★★	★★★★★	★★★★	★★★★★			S
	Lacrosse FWD	4 DR	★★★★★	★★★★★	★★★★★	★★★★★	★★★★	★★★★	★★★★★	★★★★	★★★★★			S
	Lucerne FWD (Early Release)	4 DR	★★★★★	★★★★	★★★★★	★	★★	★★	★★	★★★★★	★★★	0		S
	Lucerne FWD (Later Release)	4 DR	★★★★★	★★★★	★★★★★	★★	★★★	★★★★	★★	★★★★★	★★★★	0		S
Cadillac	DTS FWD	4 DR	NR	NR	NR	NR	NR	NR	NR	★★★★	NR	0	0	S
	Escalade 4WD	SUV	★★★★★	★★★★	★★★★★	★★★★★	★★★★★	★★★★★	★★★★★	★★★	★★★★			S
	Escalade Hybrid 4WD	SUV	★★★★★	★★★★	★★★★★	★★★★★	★★★★★	★★★★★	★★★★★	★★★	★★★★			S
	Escalade Hybrid RWD	SUV	★★★★★	★★★★	★★★★★	★★★★★	★★★★★	★★★★★	★★★★★	★★★	★★★★			S

# PURCHASING WITH SAFETY IN MIND

MAKE	MODEL	Body Style	RATINGS									SAFETY FEATURES			
			Frontal Crash (Driver)	Frontal Crash (Passenger)	Overall Frontal	Side Barrier (Driver)	Side Barrier (Passenger-Rear Seat)	Side Pole (Driver)	Overall Side	Rollover	Overall Vehicle Score	Lane Departure Warning	Forward Collision Warning	Electronic Stability Control	
Cadillac	Escalade RWD	SUV	★★★★★	★★★★	★★★★★	★★★★★	★★★★★	★★★★★	★★★★★	★★★★★	★★★	★★★★			S
	STS FWD/AWD	4 DR	NR	NR	NR	NR	NR	NR	NR	NR	★★★★★	NR	0	0	S
Chevrolet	Cruze FWD	4 DR	★★★★★	★★★★★	★★★★★	★★★★★	★★★★★	★★★★★	★★★★★	★★★★★	★★★★	★★★★★			S
	Equinox AWD	SUV	★★★★★	★★★★	★★★★	★★★★	★★★★★	★★★★★	★★★★★	★★★★★	★★★★	★★★★			S
	Equinox FWD	SUV	★★★★★	★★★★	★★★★	★★★★	★★★★★	★★★★★	★★★★★	★★★★★	★★★★	★★★★			S
	Malibu FWD	4 DR	★★★★★	★★★	★★★★	★★★★	★★★★★	★★★★★	★★★★★	★★★★★	★★★★	★★★★			S
	Silverado 1500 Crew Cab 4WD	PU	★★★★	★★★★	★★★★	★★★★★	★★★★★	★★★★★	★★★★★	★★★★★	★★★★	★★★★			S
	Silverado 1500 Crew Cab Hybrid 4WD	PU	★★★★	★★★★	★★★★	★★★★★	★★★★★	★★★★★	★★★★★	★★★★★	★★★★	★★★★			S
	Silverado 1500 Crew Cab Hybrid RWD	PU	★★★★	★★★★	★★★★	★★★★★	★★★★★	★★★★★	★★★★★	★★★★★	★★★★	★★★★			S
	Silverado 1500 Crew Cab RWD	PU	★★★★	★★★★	★★★★	★★★★★	★★★★★	★★★★★	★★★★★	★★★★★	★★★★	★★★★			S
	Silverado 1500 Extended Cab 4WD	PU	★★★★★	★★★★	★★★★	★★★★★	★★★★★	★★★★★	★★★★★	★★★★★	★★★★	★★★★			S
	Silverado 1500 Extended Cab RWD	PU	★★★★★	★★★★	★★★★	★★★★★	★★★★★	★★★★★	★★★★★	★★★★★	★★★★	★★★★			S
	Silverado 1500 Regular Cab 4WD	PU	★★★★★	★★★★	★★★★	★★★★★	N/A	★★★★★	★★★★★	★★★★★	★★★★	★★★★			S
	Silverado 1500 Regular Cab RWD	PU	★★★★★	★★★★	★★★★	★★★★★	N/A	★★★★★	★★★★★	★★★★★	★★★★	★★★★			S
	Tahoe 4WD	SUV	★★★★★	★★★★	★★★★★	★★★★★	★★★★★	★★★★★	★★★★★	★★★★★	★★★	★★★★			S
	Tahoe Hybrid 4WD	SUV	★★★★★	★★★★	★★★★★	NR	NR	NR	NR	NR	★★★	NR			S
	Tahoe Hybrid RWD	SUV	★★★★★	★★★★	★★★★★	NR	NR	NR	NR	NR	★★★	NR			S
	Tahoe RWD	SUV	★★★★★	★★★★	★★★★★	★★★★★	★★★★★	★★★★★	★★★★★	★★★★★	★★★	★★★★			S
Traverse AWD	SUV	★★★★★	★★★★	★★★★	★★★★★	★★★★★	★★★★★	★★★★★	★★★★★	★★★★	★★★★★			S	
Traverse FWD	SUV	★★★★★	★★★★	★★★★	★★★★★	★★★★★	★★★★★	★★★★★	★★★★★	★★★★	★★★★★			S	
Volt FWD	5 HB	★★★★★	★★★★	★★★★	★★★★★	★★★★★	★★★★★	★★★★★	★★★★★	★★★★★	★★★★★			S	
Dodge	Caliber FWD	5 HB	★★★★	★★★★	★★★★	★★★	★★★★★	★	★★★	★★★★	★★★			0	
Ford	Edge AWD	SUV	★★★	★★★	★★★	★★★★★	★★★★★	★★★★★	★★★★★	★★★★★	★★★★	★★★★		0	S
	Edge FWD	SUV	★★★	★★★	★★★	★★★★★	★★★★★	★★★★★	★★★★★	★★★★★	★★★★	★★★★		0	S
	Escape 4WD	SUV	★★	★★★★	★★★	★★★	★★★	★★★★	★★★	★★★	★★★	★★★			S
	Escape Hybrid 4WD	SUV	★★	★★★★	★★★	★★★	★★★	★★★★	★★★	★★★	★★★	★★★			S
	Escape Hybrid FWD	SUV	★★	★★★★	★★★	★★★	★★★	★★★★	★★★	★★★	★★★	★★★			S
	Escape FWD	SUV	★★	★★★★	★★★	★★★	★★★	★★★★	★★★	★★★	★★★	★★★			S

# PURCHASING WITH SAFETY IN MIND

MAKE	MODEL	Body Style	RATINGS									SAFETY FEATURES		
			Frontal Crash (Driver)	Frontal Crash (Passenger)	Overall Frontal	Side Barrier (Driver)	Side Barrier (Passenger-Rear Seat)	Side Pole (Driver)	Overall Side	Rollover	Overall Vehicle Score	Lane Departure Warning	Forward Collision Warning	Electronic Stability Control
Ford	Explorer FWD/AWD	SUV	NR	NR	NR	NR	NR	NR	NR	NR	NR		0	S
	F-150 Regular Cab 4x2	PU	★★★★	★★	★★★	★★★★★	N/A	★★★★	★★★★★	★★★★	★★★★			S
	F-150 Regular Cab 4x4	PU	★★★★	★★	★★★	★★★★★	N/A	★★★★	★★★★★	★★★	★★★★			S
	F-150 Super Crew 4x2	PU	★★★★	★★★	★★★	★★★★★	★★★★★	★★★★★	★★★★★	★★★★	★★★★			S
	F-150 Super Crew 4x4	PU	★★★★	★★★	★★★	★★★★★	★★★★★	★★★★★	★★★★★	★★★	★★★★			S
	F-150 Supercab 4x2	PU	★★★★	★★	★★★	★★★★★	★★★★★	★★★★	★★★★★	★★★★	★★★★			S
	F-150 Supercab 4x4	PU	★★★★	★★	★★★	★★★★★	★★★★★	★★★★	★★★★★	★★★	★★★★			S
	Fiesta FWD	4 DR	★★★★★	★★★★	★★★★	★★★★	★★★★★ <sup>Δh</sup>	★★★★	★★★★★ <sup>Δh</sup>	★★★★	★★★★★ <sup>Δh</sup>			S
	Fiesta FWD	5 HB	★★★★★	★★★★	★★★★	★★★★	★★★★★ <sup>Δh</sup>	★★★★	★★★★★ <sup>Δh</sup>	★★★★	★★★★★ <sup>Δh</sup>			S
	Fusion AWD	4 DR	★★★★	★★★	★★★	★★★★★	★★★	★★★★	★★★★	★★★★★	★★★★			S
	Fusion FWD	4 DR	★★★★	★★★	★★★	★★★★★	★★★	★★★★	★★★★	★★★★	★★★★			S
	Fusion Hybrid FWD	4 DR	★★★	★★★★	★★★	★★★★★	★★★	★★★★	★★★★	★★★★	★★★★			S
	Ranger Regular Cab 4x2	PU	★★	★★	★★	★★★★★	N/A	★	★★★	★★★	★★			S
	Ranger Supercab 4x2	PU	★★	★★	★★	★★★★★	N/A	★	★★★	★★★	★★			S
	Ranger Supercab 4x4	PU	★★	★★	★★	★★★★★	N/A	★	★★★	★★★	★★			S
	Taurus AWD	4 DR	★★★★★	★★★★	★★★★	★★★★★	★★★★★	★★★★★	★★★★★	★★★★	★★★★			S
	Taurus FWD	4 DR	★★★★★	★★★★	★★★★	★★★★★	★★★★★	★★★★★	★★★★★	★★★★	★★★★			S
GMC	Acadia AWD	SUV	★★★★★	★★★★	★★★★	★★★★★	★★★★★	★★★★★	★★★★★	★★★★	★★★★★			S
	Acadia FWD	SUV	★★★★★	★★★★	★★★★	★★★★★	★★★★★	★★★★★	★★★★★	★★★★	★★★★★			S
	Sierra Crew Cab 4WD	PU	★★★★	★★★★	★★★★	★★★★★	★★★★★	★★★★★	★★★★★	★★★★	★★★★			S
	Sierra Crew Cab Hybrid 4WD	PU	★★★★	★★★★	★★★★	★★★★★	★★★★★	★★★★★	★★★★★	★★★★	★★★★			S
	Sierra Crew Cab Hybrid RWD	SUV	★★★★	★★★★	★★★★	★★★★★	★★★★★	★★★★★	★★★★★	★★★★	★★★★			S
	Sierra Crew Cab RWD	PU	★★★★	★★★★	★★★★	★★★★★	★★★★★	★★★★★	★★★★★	★★★★	★★★★			S
	Sierra Extended Cab 4WD	PU	★★★★★	★★★★	★★★★	★★★★★	★★★★★	★★★★★	★★★★★	★★★★	★★★★			S
	Sierra Extended Cab RWD	PU	★★★★★	★★★★	★★★★	★★★★★	★★★★★	★★★★★	★★★★★	★★★★	★★★★			S
	Sierra Regular Cab 4WD	PU	★★★★★	★★★★	★★★★	★★★★★	N/A	★★★★★	★★★★★	★★★★	★★★★			S
	Sierra Regular Cab RWD	PU	★★★★★	★★★★	★★★★	★★★★★	N/A	★★★★★	★★★★★	★★★★	★★★★			S
	Terrain AWD	SUV	★★★★★	★★★★	★★★★	★★★★	★★★★★	★★★★★	★★★★★	★★★★	★★★★			S

# PURCHASING WITH SAFETY IN MIND

MAKE	MODEL	Body Style	RATINGS									SAFETY FEATURES			
			Frontal Crash (Driver)	Frontal Crash (Passenger)	Overall Frontal	Side Barrier (Driver)	Side Barrier (Passenger–Rear Seat)	Side Pole (Driver)	Overall Side	Rollover	Overall Vehicle Score	Lane Departure Warning	Forward Collision Warning	Electronic Stability Control	
GMC	Terrain FWD	SUV	★★★★★	★★★★	★★★★	★★★★	★★★★★	★★★★★	★★★★★	★★★★★	★★★★	★★★★			S
	Yukon 4WD	SUV	★★★★★	★★★★	★★★★★	★★★★★	★★★★★	★★★★★	★★★★★	★★★★★	★★★	★★★★			S
	Yukon Hybrid 4WD	SUV	★★★★★	★★★★	★★★★★	NR	NR	NR	NR	NR	★★★	NR			S
	Yukon Hybrid RWD	SUV	★★★★★	★★★★	★★★★★	NR	NR	NR	NR	NR	★★★	NR			S
	Yukon RWD	SUV	★★★★★	★★★★	★★★★★	★★★★★	★★★★★	★★★★★	★★★★★	★★★★★	★★★	★★★★			S
	Yukon Denali 4WD	SUV	★★★★★	★★★★	★★★★★	★★★★★	★★★★★	★★★★★	★★★★★	★★★★★	★★★	★★★★			S
	Yukon Denali RWD	SUV	★★★★★	★★★★	★★★★★	★★★★★	★★★★★	★★★★★	★★★★★	★★★★★	★★★	★★★★			S
Honda	Accord FWD	4 DR	★★★★★	★★★★★	★★★★★	★★★★	★★★★★	★★★★★	★★★★★	★★★★★	★★★★★	★★★★★			S
	Civic FWD	4 DR	★★★★★	★★★★	★★★★	★★	★★★★	★★★★★	★★	★★★★	★★★			S	
	Civic CNG (Natural Gas) FWD	4 DR	★★★★★	★★★★	★★★★	★★	★★★★	★★★★★	★★	★★★★	★★★			S	
	Civic IMA (Hybrid) FWD	4 DR	★★★★★	★★★★	★★★★	★★	★★★★	★★★★★	★★	★★★★	★★★			S	
	CR-V 4WD	SUV	★★★★	★★★	★★★★	★★★	★★★★★	★★	★★★★	★★★★	★★★★	★★★★			S
	CR-V FWD	SUV	★★★★	★★★	★★★★	★★★	★★★★★	★★	★★★★	★★★★	★★★★	★★★★			S
	CR-Z FWD	3 HB	★★★	★★	★★★	★★★	N/A	★★★★★	★★★	★★★★★	★★★				S
	FCX FWD	4 DR	NR	NR	NR	NR	NR	NR	NR	NR	NR	NR		0	S
	Odyssey FWD	VAN	★★★★★	★★★★★	★★★★★	★★★★★	★★★★★	★★★★★	★★★★★	★★★★★	★★★★	★★★★★			S
	Pilot 4WD	SUV	★★★★★	★★★★	★★★★	★★★★	★★★★★	★★★★★	★★★★★	★★★★★	★★★★	★★★★			S
	Pilot FWD	SUV	★★★★★	★★★★	★★★★	★★★★	★★★★★	★★★★★	★★★★★	★★★★★	★★★★	★★★★			S
Hyundai	Equus RWD	4 DR	NR	NR	NR	NR	NR	NR	NR	NR	NR	0		S	
	Genesis RWD	4 DR	NR	NR	NR	NR	NR	NR	NR	★★★★★	NR	0		S	
	Sonata FWD (Early Release)	4 DR	★★★	★★★	★★★	★★★★★	★★★★★	★★★★★	★★★★★	★★★★★	★★★★			S	
	Sonata FWD (Late Release)	4 DR	★★★★★	★★★★	★★★★	★★★★★	★★★★★	★★★★★	★★★★★	★★★★★	★★★★★			S	
	Sonata FWD (Latest Release)	4 DR	★★★★★	★★★★	★★★★	★★★★★	★★★★★	★★★★★	★★★★★	★★★★★	★★★★★			S	
	Sonata Hybrid FWD	4 DR	★★★★★	★★★★	★★★★	★★★★★	★★★★★	★★★★★	★★★★★	★★★★★	★★★★★			S	
Infiniti	EX 35 RWD/AWD	SUV	NR	NR	NR	NR	NR	NR	NR	NR	★★★★	NR	0	0	S
	FX 35, 50 AWD	SUV	NR	NR	NR	NR	NR	NR	NR	NR	NR	NR	0	0	S
	M37 RWD	4 DR	★★★★★	★★★	★★★★	★★★★	★★★★★	★★★★★	★★★★★	★★★★	★★★★	0	0	S	
	M37x AWD	4 DR	★★★★★	★★★	★★★★	★★★★	★★★★★	★★★★★	★★★★★	★★★★	★★★★	0	0	S	

# PURCHASING WITH SAFETY IN MIND

MAKE	MODEL	Body Style	RATINGS									SAFETY FEATURES			
			Frontal Crash (Driver)	Frontal Crash (Passenger)	Overall Frontal	Side Barrier (Driver)	Side Barrier (Passenger-Rear Seat)	Side Pole (Driver)	Overall Side	Rollover	Overall Vehicle Score	Lane Departure Warning	Forward Collision Warning	Electronic Stability Control	
Infiniti	M56 RWD	4 DR	★★★★★	★★★	★★★★	★★★★	★★★★★	★★★★★	★★★★★	★★★★★	★★★★	★★★★	0	0	S
	M56x AWD	4 DR	★★★★★	★★★	★★★★	★★★★	★★★★★	★★★★★	★★★★★	★★★★★	★★★★	★★★★	0	0	S
	QX56 RWD/AWD	SUV	NR	NR	NR	NR	NR	NR	NR	NR	NR	NR	0	0	S
Jeep	Grand Cherokee 2WD	SUV	★★★★★	★★★★	★★★★	★★★★★	★★★★★	★★★★★	★★★★★	★★★★★	★★★	★★★★		0	S
	Grand Cherokee 4WD	SUV	★★★★★	★★★★	★★★★	★★★★★	★★★★★	★★★★★	★★★★★	★★★★★	★★★★	★★★★		0	S
Kia	Forte FWD	4 DR	★★★★★	★★★	★★★★	★★★	★★★★★ <sup>Δh</sup>	★★	★★★★★ <sup>Δh</sup>	★★★★	★★★★★ <sup>Δh</sup>	★★★★★ <sup>Δh</sup>			S
	Forte FWD	5 HB	★★★★★	★★★	★★★★	★★★	★★★★★ <sup>Δh</sup>	★★	★★★★★ <sup>Δh</sup>	★★★★	★★★★★ <sup>Δh</sup>	★★★★★ <sup>Δh</sup>			S
	Optima FWD	4 DR	★★★★★	★★★★★	★★★★★	★★★	★★★★★	★★★★★	★★★★★	★★★★★	★★★★★	★★★★★			S
	Sorento AWD	SUV	★★★★★	★★★★	★★★★	★★★★★	★★★	★★★★★	★★★★	★★★★	★★★★	★★★★			S
	Sorento FWD	SUV	★★★★★	★★★★	★★★★	★★★★★	★★★	★★★★★	★★★★	★★★★	★★★★	★★★★			S
	Soul FWD	SUV	★★★★	★★★★	★★★★	★★★★	★★★★★	★★★★★	★★★★★	★★★★★	★★★★	★★★★			S
Lexus	RX350 AWD	SUV	★★★★	★★★★	★★★★	★★★★★	★★★★	★★★★★	★★★★★	★★★★★	★★★★	★★★★			S
	RX350 FWD	SUV	★★★★	★★★★	★★★★	★★★★★	★★★★	★★★★★	★★★★★	★★★★★	★★★★	★★★★			S
	RX450h Hybrid AWD	SUV	★★★★	★★★★	★★★★	★★★★★	★★★★	★★★★★	★★★★★	★★★★★	★★★★	★★★★			S
	RX450h Hybrid FWD	SUV	★★★★	★★★★	★★★★	★★★★★	★★★★	★★★★★	★★★★★	★★★★★	★★★★	★★★★			S
Lincoln	MKX AWD	SUV	★★★	★★★	★★★	NR	NR	NR	NR	★★★★	NR		0	S	
	MKX FWD	SUV	★★★	★★★	★★★	NR	NR	NR	NR	★★★★	NR		0	S	
	MKZ AWD	4 DR	★★★★	★★★	★★★	★★★★★	★★★	★★★★	★★★★	★★★★★	★★★★			S	
	MKZ FWD	4 DR	★★★★	★★★	★★★	★★★★★	★★★	★★★★	★★★★	★★★★	★★★★			S	
	MKZ Hybrid FWD	4 DR	★★★	★★★★	★★★	★★★★★	★★★	★★★★	★★★★	★★★★	★★★★			S	
Mazda	Mazda3 FWD	4 DR	★★★★★	★★★★	★★★★★	★★★★★	★★ <sup>Δh</sup>	★★★	★★ <sup>Δh</sup>	★★★★	★★★★★ <sup>Δh</sup>			S	
	Mazda3 FWD	5 HB	★★★★★	★★★★	★★★★★	★★★★★	★★ <sup>Δh</sup>	★★★	★★ <sup>Δh</sup>	★★★★	★★★★★ <sup>Δh</sup>			S	
	Tribute Hybrid 4WD	SUV	★★	★★★★	★★★	★★★	★★★	★★★★	★★★	★★★	★★★			S	
	Tribute 4WD	SUV	★★	★★★★	★★★	★★★	★★★	★★★★	★★★	★★★	★★★			S	
	Tribute Hybrid FWD	SUV	★★	★★★★	★★★	★★★	★★★	★★★★	★★★	★★★	★★★			S	
	Tribute FWD	SUV	★★	★★★★	★★★	★★★	★★★	★★★★	★★★	★★★	★★★			S	
Mercedes Benz	C Class RWD	4 DR	★★★★	★★	★★★	★★★★★	★★★★★	★★★★★	★★★★★	★★★★★	★★★★			S	
	C Class AWD	4 DR	★★★★	★★	★★★	★★★★★	★★★★★	★★★★★	★★★★★	★★★★★	★★★★			S	

# PURCHASING WITH SAFETY IN MIND


MAKE	MODEL	Body Style	RATINGS									SAFETY FEATURES		
			Frontal Crash (Driver)	Frontal Crash (Passenger)	Overall Frontal	Side Barrier (Driver)	Side Barrier (Passenger—Rear Seat)	Side Pole (Driver)	Overall Side	Rollover	Overall Vehicle Score	Lane Departure Warning	Forward Collision Warning	Electronic Stability Control
Mercury	Mariner Hybrid 4WD	SUV	★★	★★★★	★★★	★★★	★★★	★★★★	★★★	★★★	★★★			S
	Mariner 4WD	SUV	★★	★★★★	★★★	★★★	★★★	★★★★	★★★	★★★	★★★			S
	Mariner Hybrid FWD	SUV	★★	★★★★	★★★	★★★	★★★	★★★★	★★★	★★★	★★★			S
	Mariner FWD	SUV	★★	★★★★	★★★	★★★	★★★	★★★★	★★★	★★★	★★★			S
	Milan AWD	4 DR	★★★★	★★★	★★★	★★★★	★★★	★★★★	★★★★	★★★★	★★★★			S
	Milan Hybrid FWD	4 DR	★★★	★★★★	★★★	★★★★	★★★	★★★★	★★★★	★★★★	★★★★			S
	Milan FWD	4 DR	★★★★	★★★	★★★	★★★★	★★★	★★★★	★★★★	★★★★	★★★★			S
Nissan	Altima Hybrid FWD	4 DR	★★★★	★★★★	★★★★	★★★★	★★★★	★★★★	★★★★	★★★★	★★★★			S
	Altima FWD	4 DR	★★★★	★★★★	★★★★	★★★★	★★★★	★★★★	★★★★	★★★★	★★★★			S
	Murano AWD	SUV	★★★★	★★★	★★★★	★★★★	★★★	★★★★	★★★★	★★★★	★★★★			S
	Murano FWD	SUV	★★★★	★★★	★★★★	★★★★	★★★	★★★★	★★★★	★★★★	★★★★			S
	Rogue AWD	SUV	★★★★	★★★	★★★★	★★★★	★★★★	★★★★	★★★★	★★★★	★★★★			S
	Rogue FWD	SUV	★★★★	★★★	★★★★	★★★★	★★★★	★★★★	★★★★	★★★★	★★★★			S
	Sentra FWD	4 DR	★★★★	★★★	★★★	★★★★	★★	★★★★	★★★	★★★★	★★★★			S
	Versa FWD	4 DR	★★★	★★	★★★	★★	★★	★★	★★	★★★★	★★			0
	Versa FWD	5 HB	★★★	★★	★★★	★★	★★	★★	★★	★★★★	★★			0
Ram	1500 Crew Cab 4WD	PU	★★★	★★	★★	★★★★	★★★★	★ <sup>Δh</sup>	★★★★★ <sup>Δh</sup>	★★★	★★★ <sup>Δh</sup>			S
	1500 Crew Cab RWD	PU	★★★	★★	★★	★★★★	★★★★	★ <sup>Δh</sup>	★★★★★ <sup>Δh</sup>	★★★	★★★ <sup>Δh</sup>			S
	1500 Quad Cab 4WD	PU	★★★	★★	★★	★★★★	★★★★	★ <sup>Δh</sup>	★★★★★ <sup>Δh</sup>	★★★	★★★ <sup>Δh</sup>			S
	1500 Quad Cab RWD	PU	★★★	★★	★★	★★★★	★★★★	★ <sup>Δh</sup>	★★★★★ <sup>Δh</sup>	★★★	★★★ <sup>Δh</sup>			S
	1500 Regular Cab 4WD	PU	★★★	★★	★★	★★★★	N/A	★ <sup>Δh</sup>	★★★ <sup>Δh</sup>	★★★	★★★ <sup>Δh</sup>			S
	1500 Regular Cab RWD	PU	★★★	★★	★★	★★★★	N/A	★ <sup>Δh</sup>	★★★ <sup>Δh</sup>	★★★★	★★★ <sup>Δh</sup>			S
Rolls-Royce	Ghost RWD	4 DR	NR	NR	NR	NR	NR	NR	NR	NR	NR	0		S
Scion	tC FWD	3 HB	★★★★	★★★★	★★★★	★★★★	★★★★	★★★★	★★★★	★★★★	★★★★			S
Subaru	Forester AWD	SUV	★★★★	★★★★	★★★★	★★★★	★★	★★	★★★	★★★★	★★★★			S
	Legacy AWD	4 DR	★★★★	★★★★	★★★★	★★★★	★★★★	★★★	★★★★	★★★★	★★★★			S
	Outback AWD	SUV	★★★★	★★★★	★★★★	★★★★	★★★★	★★★	★★★★	★★★★	★★★★			S

# PURCHASING WITH SAFETY IN MIND

MAKE	MODEL	Body Style	RATINGS									SAFETY FEATURES		
			Frontal Crash (Driver)	Frontal Crash (Passenger)	Overall Frontal	Side Barrier (Driver)	Side Barrier (Passenger–Rear Seat)	Side Pole (Driver)	Overall Side	Rollover	Overall Vehicle Score	Lane Departure Warning	Forward Collision Warning	Electronic Stability Control
Toyota	Camry FWD (Early Release)	4 DR	★★★★	★★	★★★	★★★★★	★★	★★	★★★	★★★★	★★★			S
	Camry FWD (Later Release)	4 DR	★★★★	★★	★★★	★★★★★	★★★★	★★	★★★★	★★★★	★★★★			S
	Camry Hybrid FWD (Early Release)	4 DR	★★★★	★★	★★★	★★★★★	★★	★★	★★★	★★★★	★★★			S
	Camry Hybrid FWD (Later Release)	4 DR	★★★★	★★	★★★	★★★★★	★★★★	★★	★★★★	★★★★	★★★★			S
	Corolla FWD	4 DR	★★★★★	★★★★	★★★★	★★★★★	★★	★	★★	★★★★	★★★			S
	Highlander Hybrid 4WD	SUV	★★★★	★★★★	★★★★	★★★★★	★★★★★	★★★★★	★★★★★	★★★★	★★★★			S
	Highlander 4WD	SUV	★★★★	★★★★	★★★★	★★★★★	★★★★★	★★★★★	★★★★★	★★★★	★★★★			S
	Highlander FWD	SUV	★★★★	★★★★	★★★★	★★★★★	★★★★★	★★★★★	★★★★★	★★★★	★★★★			S
	Prius FWD	4 DR	★★★★★	★★★★	★★★★	★★★★★	★★★★★	★★★★★	★★★★★	★★★★	★★★★★			S
	RAV4 4WD	SUV	★★★★	★★	★★★	★★★★★	★★★	★★	★★★★	★★★★	★★★			S
	RAV4 FWD	SUV	★★★★	★★	★★★	★★★★★	★★★	★★	★★★★	★★★★	★★★			S
	Sienna AWD	VAN	★★★★★	★★	★★★	★★★★★	★★★★★	★★★★	★★★★★	★★★★	★★★★			S
	Sienna FWD	VAN	★★★★★	★★	★★★	★★★★★	★★★★★	★★★★	★★★★★	★★★★	★★★★			S
	Tacoma Crew Cab 4WD	PU	★★★★	★★	★★★	★★★★	★★★★★	★★★★	★★★★★	★★★★	★★★★			S
	Tacoma Crew Cab RWD	PU	★★★★	★★	★★★	★★★★	★★★★★	★★★★	★★★★★	★★★★	★★★★			S
	Tundra Extended Cab 4x2	PU	★★★★	★★★	★★★★	★★★★★	★★★★★	★★★★★	★★★★★	★★★	★★★★			S
	Tundra Extended Cab 4x4	PU	★★★★	★★★	★★★★	★★★★★	★★★★★	★★★★★	★★★★★	★★★★	★★★★			S
	Tundra Regular Cab 4x2	PU	★★★★	★★★	★★★★	★★★★★	N/A	★★★★★	★★★★★	★★★	★★★★			S
	Tundra Regular Cab 4x4	PU	★★★★	★★★	★★★★	★★★★★	N/A	★★★★★	★★★★★	★★★★	★★★★			S
	Venza 4WD	SUV	★★★★	★★	★★★	★★★★★	★★★★★	★★★★★	★★★★★	★★★★	★★★★			S
Venza FWD	SUV	★★★★	★★	★★★	★★★★★	★★★★★	★★★★★	★★★★★	★★★★	★★★★			S	
Volkswagen	Jetta FWD	4 DR	★★★★	★★★★	★★★★	★★★★	★★★★★	★★★★★	★★★★★	★★★★	★★★★			S
Volvo	S60 FWD	4 DR	NR	NR	NR	NR	NR	NR	NR	NR	NR	0	0	S
	S80 FWD/AWD	4 DR	NR	NR	NR	NR	NR	NR	NR	NR	NR	0	0	S
	XC60 AWD	SUV	★★★★★	★★★★★	★★★★★	★★★★★	★★★★★	★★★★★	★★★★★	★★★★	★★★★★	0	0	S
	XC60 FWD	SUV	★★★★★	★★★★★	★★★★★	★★★★★	★★★★★	★★★★★	★★★★★	★★★★	★★★★★	0	0	S
	XC70 FWD/AWD	SUV	NR	NR	NR	NR	NR	NR	NR	NR	NR	0	0	S



## RATINGS

CODE	DEFINITION
NR	Not Rated
	Safety Concern <i>See SaferCar.gov for full description</i>
h	High Lower Spine Accelerations
f	Fuel Leak

## SAFETY KEY

CODE	DEFINITION
S	Standard Equipment
O	Optional Equipment

**NOTE:** Please visit [SaferCar.gov](http://SaferCar.gov) for a complete listing of model year 2011 rollover ratings and vehicles that comply with NHTSA's Lane Departure Warning (LDW), Forward Collision Warning (FCW), and Electronic Stability Control (ESC) tests.



# SAFETY KEY