

LOCAL EMPLOYMENT DYNAMICS

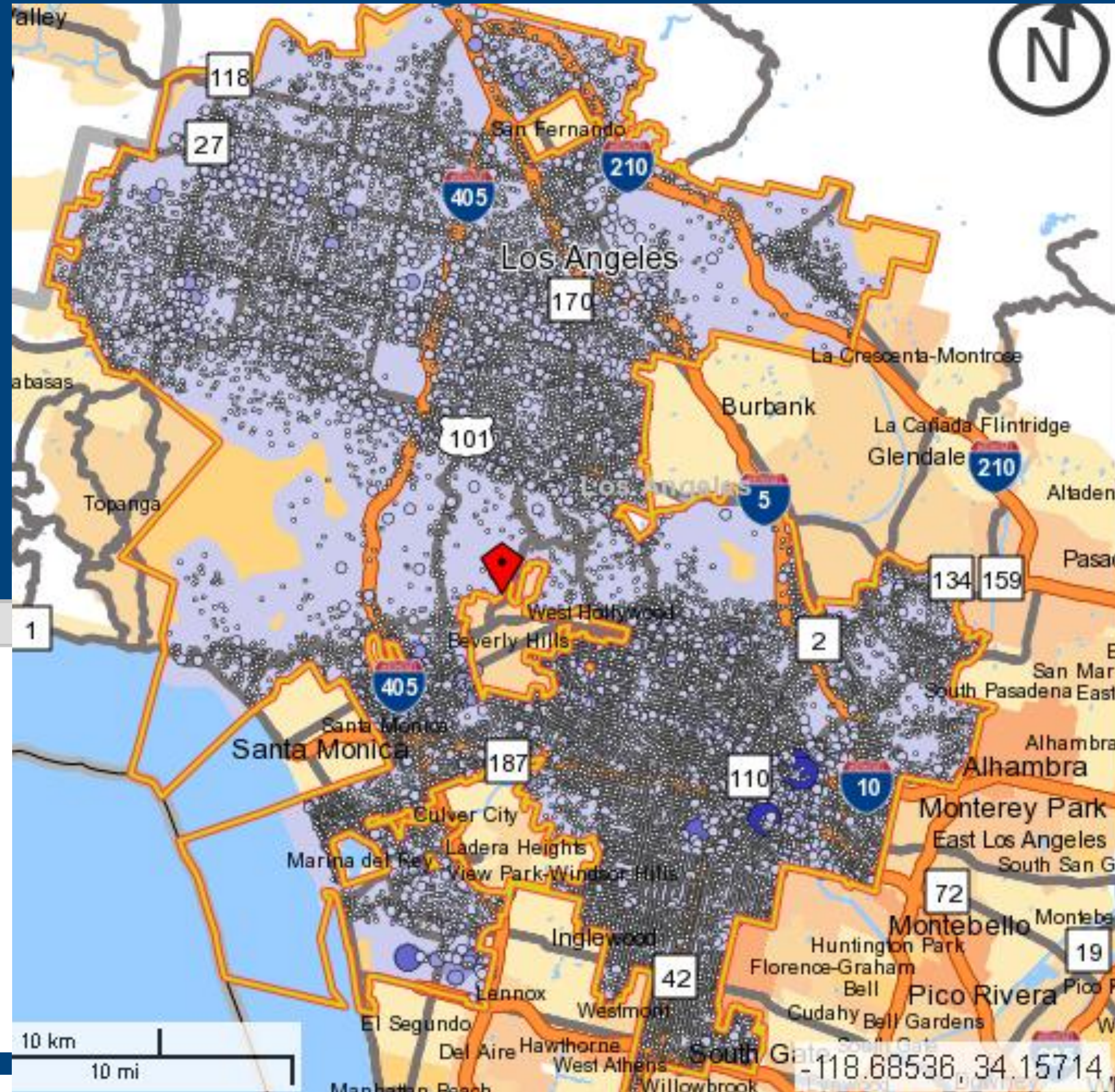
A PORTRAIT OF THE NATIONS WORKFORCE

Earlene K.P. Dowell
Longitudinal-Employer Household Dynamics Program
Center for Economic Studies
U.S. Census Bureau

Local Employment Dynamics Partnership

- States + US Census Bureau
- Administrative Records + Censuses and Surveys
- Jobs, Jobs, Jobs
- Public-Use Data Products
- Quarterly Workforce Indicators (QWI)
- LODES or LEHD Origin-Destination Employment Statistics— Distributed via OnTheMap Application
- <http://lehd.did.census.gov/led/>

Characteristics of the Local Labor Force



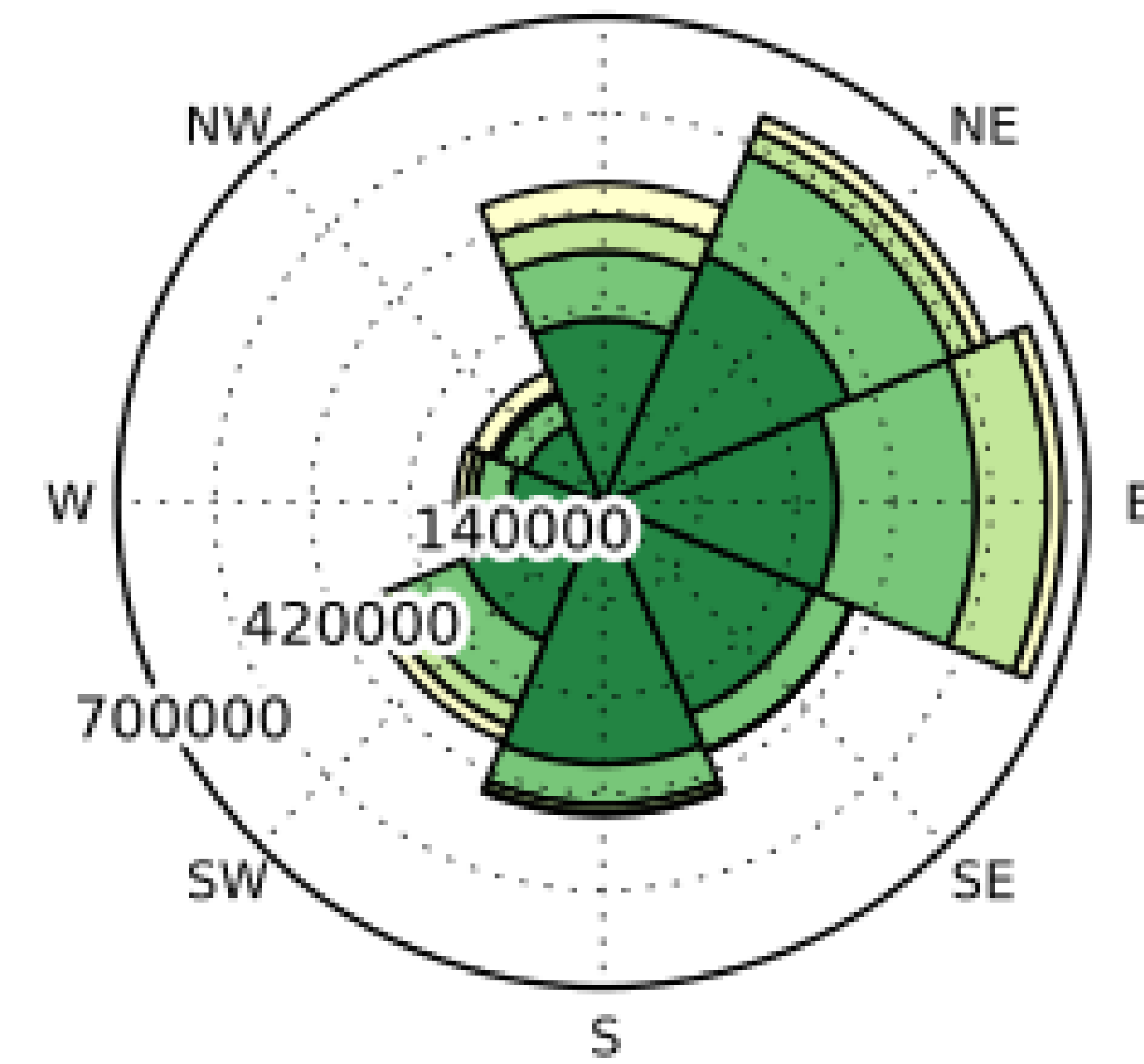
▼ Legends

- 5 - 9,597 Jobs/Sq.Mile
- 9,598 - 38,374 Jobs/Sq.Mile
- 38,375 - 86,335 Jobs/Sq.Mile
- 86,336 - 153,481 Jobs/Sq.Mile
- 153,482 - 239,811 Jobs/Sq.Mile
- 1 - 140 Jobs
- 141 - 2,226 Jobs
- 2,227 - 11,269 Jobs
- 11,270 - 35,616 Jobs
- 35,617 - 86,953 Jobs

Commuting Patterns



Job Counts by Distance/Direction in 2009
All Workers
N



Jobs by Distance - Work Census Block to Home Census Block

	2009	
	Count	Share
Total Primary Jobs	3,355,030	100.0%
Less than 10 miles	2,165,979	64.6%
10 to 24 miles	766,084	22.8%
25 to 50 miles	256,229	7.6%
Greater than 50 miles	166,738	5.0%

OnTheMap

OnTheMap

[LED Home](#) [Help and Documentation](#) [Reload](#) [Text-Only](#)

Start
Base Map
Selection

▼ Welcome to OnTheMap!

Start an analysis by using one of the tools below (Search, Import Geography, or Load .OTM file). Hover over the Help icons located throughout the application to see Help tips for using specific functionality. Sections in the control panel can be collapsed or opened by clicking the section title.

[Read New Data Notice \(02/21/2012\)](#)

▼ Search

Search All Names ▼


▼ Import Geography

[Import from KML](#)
[Import from SHP](#)
[Import from GPS](#)

▼ Load .OTM File

Click the "Load" button below to load a .OTM file.

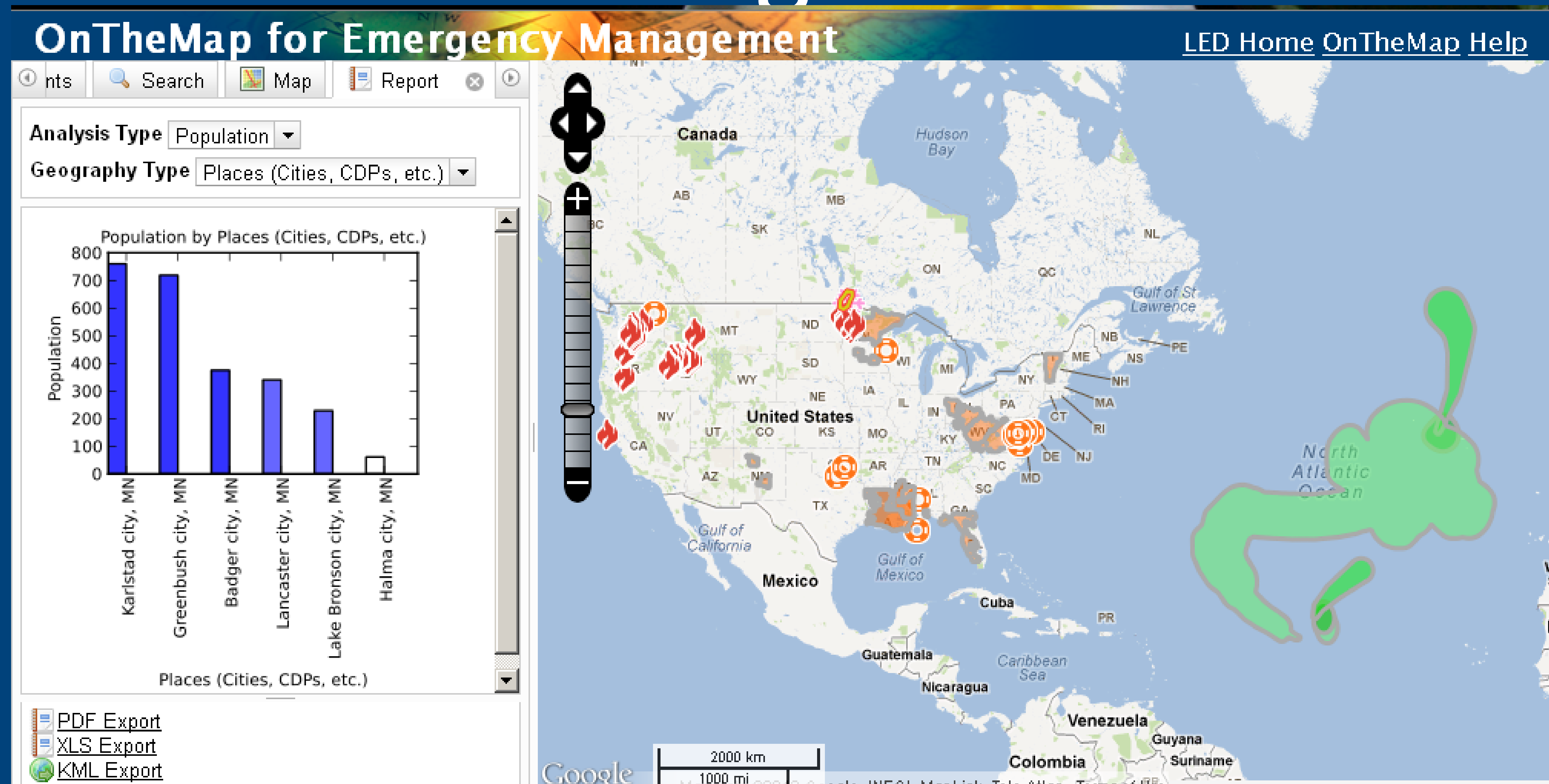
Save
 Load
 Feedback
 Previous Extent
 Hide Tabs



What's New with OnTheMap

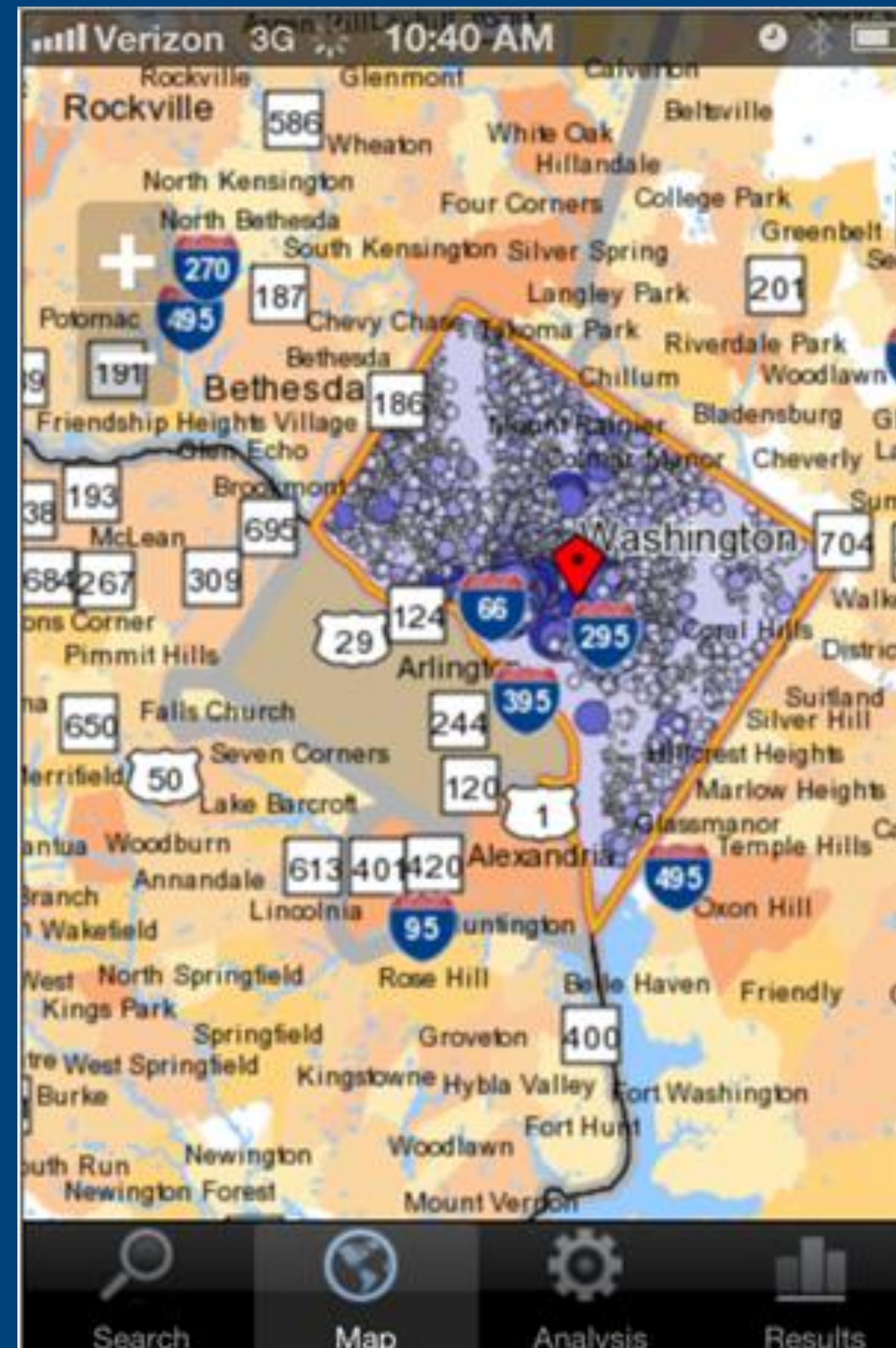
- Added 2010 data for all available states
- New data source
- New variables
- Significantly increased speed of the application
- Additional charting and reporting capabilities in the analysis results
- Base map has been updated with TIGER 2010 geographies for most layers
- Improved cartography and cleaner graphics

OnTheMap for Emergency Management



<http://onthemap.ces.census.gov/em.html>

OnTheMap Mobile



<http://onthemap.ces.census.gov/m>

Coming Soon with QWI Online

- Cutting Data tool
- QWI Explorer tool
- Access to all QWI's 32 data fields
- Enable comparisons across geography, time, and other characteristic groups
- Flexible charting and thematic mapping functionality
- Simplified user work flows and improved help documentation
- QWI Rankings and QWI Aggregations

QWI Online [NAICS]



Select a state from the following table to access NAICS-based statistics. Click [here](#) to access [SIC-based statistics](#). While NAICS series continue to be updated on a quarterly basis, the SIC-based QWI ceased to be updated as of the 2007Q2 data update. If a state does not have an active link, it means either it is a new partner whose data are being processed or it is not a partner in the voluntary Local Employment Dynamics (LED) partnership (state name in italic).

- Technical Paper No. TP-2006-01
[The LEHD Infrastructure Files and the Creation of the Quarterly Workforce Indicators](#) [PDF; File Size: 768KB]
Date: January 2006. Author(s): John Abowd, Bryce Stephens and Lars Vilhuber
- [Detailed QWI Definitions](#) [PDF; File Size: 272KB]
Date: January 2006. Author(s): John Abowd, Bryce Stephens and Lars Vilhuber
- [Generalized QWI Definitions: QWI 101](#) [PDF; File Size: 203KB]

The year and quarter number below each state indicate the latest complete update for that state.

Alabama (2011 Q1)	Florida (2011 Q1)	Louisiana (2010 Q4)	Nebraska (2011 Q1)	Oklahoma (2011 Q1)	Vermont (2011 Q1)
Alaska (2011 Q1)	Georgia (2011 Q1)	Maine (2011 Q1)	Nevada (2011 Q1)	Oregon (2011 Q1)	Virginia (2010 Q4)
Arizona (2011 Q1)	Hawaii (2011 Q1)	Maryland (2011 Q1)	New Hampshire (2011 Q1)	Pennsylvania (2011 Q1)	Washington (2011 Q1)
Arkansas (2011 Q1)	Idaho (2011 Q1)	<i>Massachusetts</i>	New Jersey (2011 Q1)	Rhode Island (2010 Q4)	West Virginia (2011 Q1)
California (2011 Q1)	Illinois (2011 Q1)	Michigan (2011 Q1)	New Mexico (2011 Q1)	South Carolina (2011 Q1)	Wisconsin (2011 Q1)
Colorado (2011 Q1)	Indiana (2011 Q1)	Minnesota (2011 Q1)	New York (2011 Q1)	South Dakota (2011 Q1)	Wyoming (2011 Q1)
Connecticut (2011 Q1)	Iowa (2011 Q1)	Mississippi (2011 Q1)	North Carolina (2011 Q1)	Tennessee (2011 Q1)	<i>Puerto Rico</i>
District of Columbia (2011 Q1)	Kansas (2011 Q1)	Missouri (2011 Q1)	North Dakota (2011 Q1)	Texas (2011 Q1)	<i>Virgin Islands</i>
Delaware (2011 Q1)	Kentucky (2011 Q1)	Montana (2011 Q2)	Ohio (2011 Q1)	Utah (2011 Q1)	

User Notes and Alerts:

[PDF] or  denotes a file in Adobe's [Portable Document Format](#). To view the file, you will need the [Adobe® Acrobat® Reader](#)  available **free** from Adobe.

Questions?

- Contact Information:
 - Earlene K.P. Dowell
 - Technical Marketing and Training Consultant
- CES.Local.Employment.Dynamics@census.gov
- Join the List Serve
- lehd-general@lists.census.gov
- lehd-onthemap@lists.census.gov