

MIDWEST INFORMATION OFFICE  
Chicago, Ill.

For release: 7:30 a.m. CT, Tuesday, October 16, 2012

12-2051-CHI

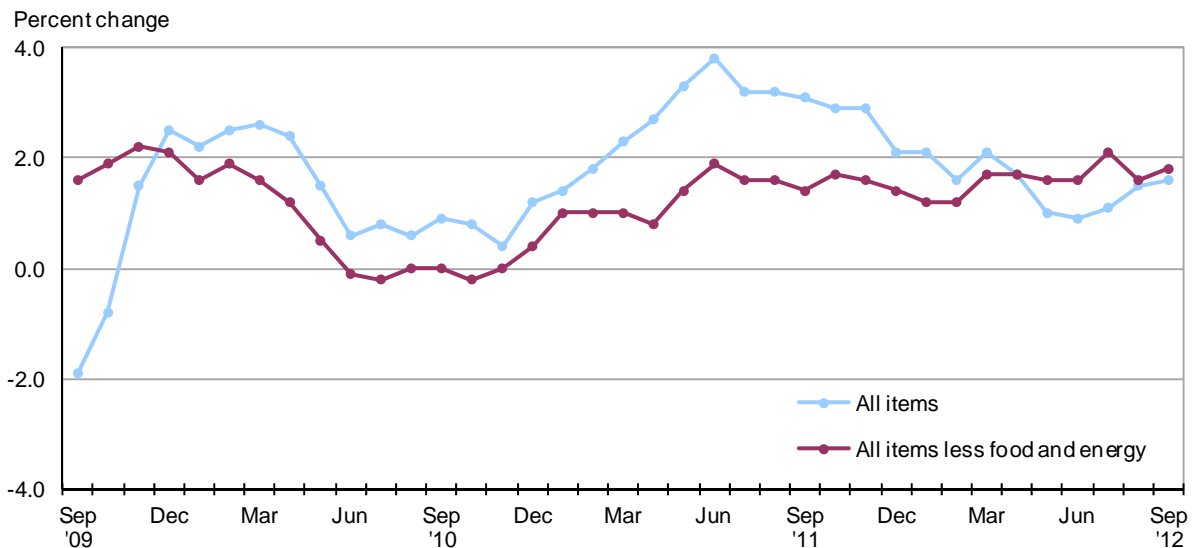
Technical information: (312) 353-1880 • BLSInfoChicago@bls.gov • www.bls.gov/ro5  
Media contact: (312) 353-1138

**CONSUMER PRICE INDEX, CHICAGO-GARY-KENOSHA,  
ILL.-IND.-WIS., CMSA – SEPTEMBER 2012**

The Consumer Price Index for All Urban Consumers (CPI-U) in the Chicago-Gary-Kenosha area was up 0.3 percent in September, the U.S. Bureau of Labor Statistics reported today. Regional Commissioner Charlene Peiffer noted that energy prices rose 1.7 percent while food prices were down 0.2 percent. The all items less food and energy category increased 0.2 percent over the month. Among the indexes within the all items less food and energy category, prices were higher for apparel and medical care, but lower for shelter. (Data in this report are not seasonally adjusted. Accordingly, month-to-month changes may reflect the impact of seasonal influences.)

Over the last 12 months, the Chicago area all items CPI-U increased 1.6 percent. The energy index rose 0.5 percent since last September, primarily due to rising prices for gasoline. The all items less food and energy index was 1.8 percent higher over the year.

**Chart 1. Over-the-year percent change in CPI-U, Chicago-Gary-Kenosha, September 2009–September 2012**



Source: U.S. Bureau of Labor Statistics

## Food

Food prices were down 0.2 percent in September after falling 0.3 percent in August. Of the two components within the food index, food at home prices (groceries) were 0.4 percent lower and food away from home prices (restaurant, cafeteria, and vending purchases) increased 0.2 percent over the month. Within the food at home group, prices were higher for snacks and carbonated drinks. Prices were lower for spices, seasonings, condiments and sauces; ice cream and related products; and candy and chewing gum.

From September 2011 to September 2012, the food index increased 1.0 percent. In the previous 12-month period ended September 2011, food prices in the Chicago area were up 4.3 percent.

## Energy

The energy index rose 1.7 percent in September following a 7.8-percent increase in August. Within the energy category, prices for gasoline and utility (piped) gas service increased 2.1 percent and 2.5 percent, respectively. The electricity index edged up 0.1 percent over the month.

The index for gasoline was up 9.0 percent over the year. Costs for utility (piped) gas service decreased 14.8 percent and prices for electricity were down 8.8 percent from September 2011. Overall energy prices rose 0.5 percent from September 2011 to September 2012.

## All items less food and energy

The index for all items less food and energy increased 0.2 percent in September. Among the index's components, prices were higher for apparel (5.7 percent) and medical care (0.7 percent) in contrast to lower prices for shelter (-0.3 percent).

Over the year, the index for all items less food and energy increased 1.8 percent. Shelter was the largest contributor, rising 1.5 percent from September 2011 to September 2012. Medical care costs (5.3 percent) and prices for recreation (2.8 percent) also rose since last September.

**The October 2012 Consumer Price Index for Chicago is scheduled to be released on November 15, 2012, at 7:30 a.m. (CT).**

**Table A. Percent Changes in the CPI-U, Chicago-Gary-Kenosha, Ill.-Ind.-Wis. (not seasonally adjusted)**

Expenditure Category	Percent changes from preceding month							12 mo. ended Sep. '12
	2012							
	Mar.	Apr.	May	June	July	Aug.	Sep.	Sep. '12
All items	1.2	0.0	-0.1	-0.1	-0.2	0.6	0.3	1.6
Food & beverages	.2	.5	.3	.5	.1	-3	-2	.9
Food	.2	.6	.2	.5	.0	-3	-2	1.0
Housing	.3	-5	-1	.6	-2	.1	-1	.2
Apparel	3.2	-2.4	.3	-1.2	-2.1	2.4	5.7	4.5
Transportation	4.5	1.4	-7	-2.0	-1.6	3.2	.7	3.5
Medical care	.5	-1	.1	.2	.8	.0	.7	5.3
Recreation	2.7	-3	.6	.2	-2	-4	-4	2.8
Education & communication	-1	.2	-2	-3	.0	.3	.1	-2
Other goods & services	1.1	-4	.2	.8	3.8	.1	.1	4.9
Special Indexes								
Energy	8.5	.5	-2.6	-3.3	-2.9	7.8	1.7	.5
All items less food & energy	.6	-1	.2	.2	.0	.0	.2	1.8

## Technical Note

The Consumer Price Index (CPI) is a measure of the average change in prices over time in a fixed market basket of goods and services. The Bureau of Labor Statistics publishes CPIs for two population groups: (1) a CPI for All Urban Consumers (CPI-U) which covers approximately 88 percent of the total population and (2) a CPI for Urban Wage Earners and Clerical Workers (CPI-W) which covers 29 percent of the total population. The CPI-U includes, in addition to wage earners and clerical workers, groups such as professional, managerial, and technical workers, the self-employed, short-term workers, the unemployed, and retirees and others not in the labor force.

The CPI is based on prices of food, clothing, shelter, and fuels, transportation fares, charges for doctors' and dentists' services, drugs, and the other goods and services that people buy for day-to-day living. Each month, prices are collected in 87 urban areas across the country from about 4,000 housing units and approximately 26,000 retail establishments--department stores, supermarkets, hospitals, filling stations, and other types of stores and service establishments. All taxes directly associated with the purchase and use of items are included in the index.

The index measures price changes from a designated reference date (1982-84) that equals 100.0. An increase of 16.5 percent, for example, is shown as 116.5. This change can also be expressed in dollars as follows: the price of a base period "market basket" of goods and services in the CPI has risen from \$10 in 1982-84 to \$11.65. For further details see the CPI home page on the Internet at [www.bls.gov/cpi](http://www.bls.gov/cpi) and the BLS Handbook of Methods, Chapter 17 The Consumer Price Index, available on the Internet at [www.bls.gov/opub/hom/homch17\\_a.htm](http://www.bls.gov/opub/hom/homch17_a.htm).

In calculating the index, price changes for the various items in each location are averaged together with weights that represent their importance in the spending of the appropriate population group. Local data are then combined to obtain a U.S. city average. Because the sample size of a local area is smaller, the local area index is subject to substantially more sampling and other measurement error than the national index. In addition, local indexes are not adjusted for seasonal influences. As a result, local area indexes show greater volatility than the national index, although their long-term trends are quite similar. **NOTE: Area indexes do not measure differences in the level of prices between cities; they only measure the average change in prices for each area since the base period.**

The Chicago-Gary-Kenosha, Ill.-Ind.-Wis. consolidated area covered in this release is comprised of Cook, DeKalb, DuPage, Grundy, Kane, Kankakee, Kendall, Lake, McHenry, and Will Counties in Illinois; Lake and Porter Counties in Indiana; and Kenosha County in Wisconsin.

Information in this release will be made available to sensory impaired individuals upon request. Voice phone: 202-691-5200; TDD message referral phone number: 1-800-877-8339.

Consumer Price Index for All Urban Consumers (CPI-U): Indexes and percent changes for selected periods

Chicago-Gary-Kenosha, IL-IN-WI (1982-84=100 unless otherwise noted)

Item and Group	Indexes			Percent change from—		
	July 2012	Aug. 2012	Sep. 2012	Sep. 2011	July 2012	Aug. 2012
<b>Expenditure category</b>						
All items .....	221.611	222.967	223.611	1.6	0.9	0.3
All items (1967=100) .....	662.082	666.133	668.056	-	-	-
Food and beverages .....	229.409	228.742	228.296	.9	-.5	-.2
Food .....	228.590	227.851	227.391	1.0	-.5	-.2
Food at home .....	229.765	228.358	227.414	-.4	-1.0	-.4
Food away from home .....	221.270	221.655	222.008	3.4	.3	.2
Alcoholic beverages .....	238.176	238.881	238.710	-.2	.2	-.1
Housing .....	217.827	218.018	217.840	.2	.0	-.1
Shelter .....	270.387	270.458	269.779	1.5	-.2	-.3
Rent of primary residence <sup>1</sup> .....	280.823	281.457	281.850	1.7	.4	.1
Owners' equivalent rent of residences <sup>1 2</sup> .....	275.140	275.322	275.462	1.5	.1	.1
Owners' equivalent rent of primary residence <sup>1 2</sup> .....	275.140	275.322	275.462	1.5	.1	.1
Fuels and utilities .....	170.253	173.305	174.888	-6.8	2.7	.9
Household energy .....	141.997	145.322	146.959	-11.1	3.5	1.1
Energy services <sup>1</sup> .....	144.513	147.886	149.444	-11.4	3.4	1.1
Electricity <sup>1</sup> .....	144.410	144.410	144.492	-8.8	.1	.1
Utility (piped) gas service <sup>1</sup> .....	131.653	139.292	142.708	-14.8	8.4	2.5
Household furnishings and operations .....	100.066	98.648	98.826	-1.5	-1.2	.2
Apparel .....	91.207	93.353	98.674	4.5	8.2	5.7
Transportation .....	202.248	208.736	210.218	3.5	3.9	.7
Private transportation .....	199.621	206.632	208.057	3.6	4.2	.7
Motor fuel .....	323.704	360.599	368.203	9.0	13.7	2.1
Gasoline (all types) .....	321.133	358.166	365.565	9.0	13.8	2.1
Gasoline, unleaded regular <sup>3</sup> .....	317.734	353.509	361.115	8.8	13.7	2.2
Gasoline, unleaded midgrade <sup>3 4</sup> .....	332.452	372.706	379.214	9.2	14.1	1.7
Gasoline, unleaded premium <sup>3</sup> .....	303.061	340.637	347.215	9.3	14.6	1.9
Medical care .....	434.653	434.702	437.720	5.3	.7	.7
Recreation <sup>5</sup> .....	110.635	110.182	109.748	2.8	-.8	-.4
Education and communication <sup>5</sup> .....	137.253	137.638	137.800	-.2	.4	.1
Other goods and services .....	371.512	371.834	372.178	4.9	.2	.1
<b>Commodity and service group</b>						
All items .....	221.611	222.967	223.611	1.6	.9	.3
Commodities .....	173.250	175.612	176.569	1.5	1.9	.5
Commodities less food and beverages .....	142.966	146.429	147.902	1.9	3.5	1.0
Nondurables less food and beverages .....	190.323	199.156	203.048	4.7	6.7	2.0
Durables .....	97.688	96.591	96.015	-2.3	-1.7	-.6
Services .....	267.266	267.618	267.947	1.7	.3	.1
<b>Special aggregate indexes</b>						
All items less medical care .....	212.460	213.856	214.408	1.4	.9	.3
All items less shelter .....	205.505	207.345	208.482	1.7	1.4	.5
Commodities less food .....	146.866	150.322	151.782	1.9	3.3	1.0
Nondurables .....	211.602	216.101	218.011	2.8	3.0	.9
Nondurables less food .....	194.249	202.826	206.585	4.6	6.4	1.9
Services less rent of shelter <sup>2</sup> .....	278.006	278.702	280.225	1.9	.8	.5
Services less medical care services .....	254.617	254.955	255.064	1.3	.2	.0
Energy .....	212.794	229.493	233.494	.5	9.7	1.7
All items less energy .....	224.130	223.935	224.242	1.7	.0	.1
All items less food and energy .....	224.126	224.030	224.479	1.8	.2	.2

<sup>1</sup> This index series was calculated using a Laspeyres estimator. All other item stratum index series were calculated using a geometric means estimator.

<sup>2</sup> Index is on a December 1982=100 base.

<sup>3</sup> Special index based on a substantially smaller sample.

<sup>4</sup> Indexes on a December 1993=100 base.

<sup>5</sup> Indexes on a December 1997=100 base.

- Data not available.

NOTE: Index applies to a month as a whole, not to any specific date.