

Proficiency Testing - From Concept to Reality: The Caribbean Experience

Ms. Lisa Barrow-Boisson,

Ms. Valerie Wilson,

Caribbean Epidemiology Centre
(CAREC/PAHO/WHO)

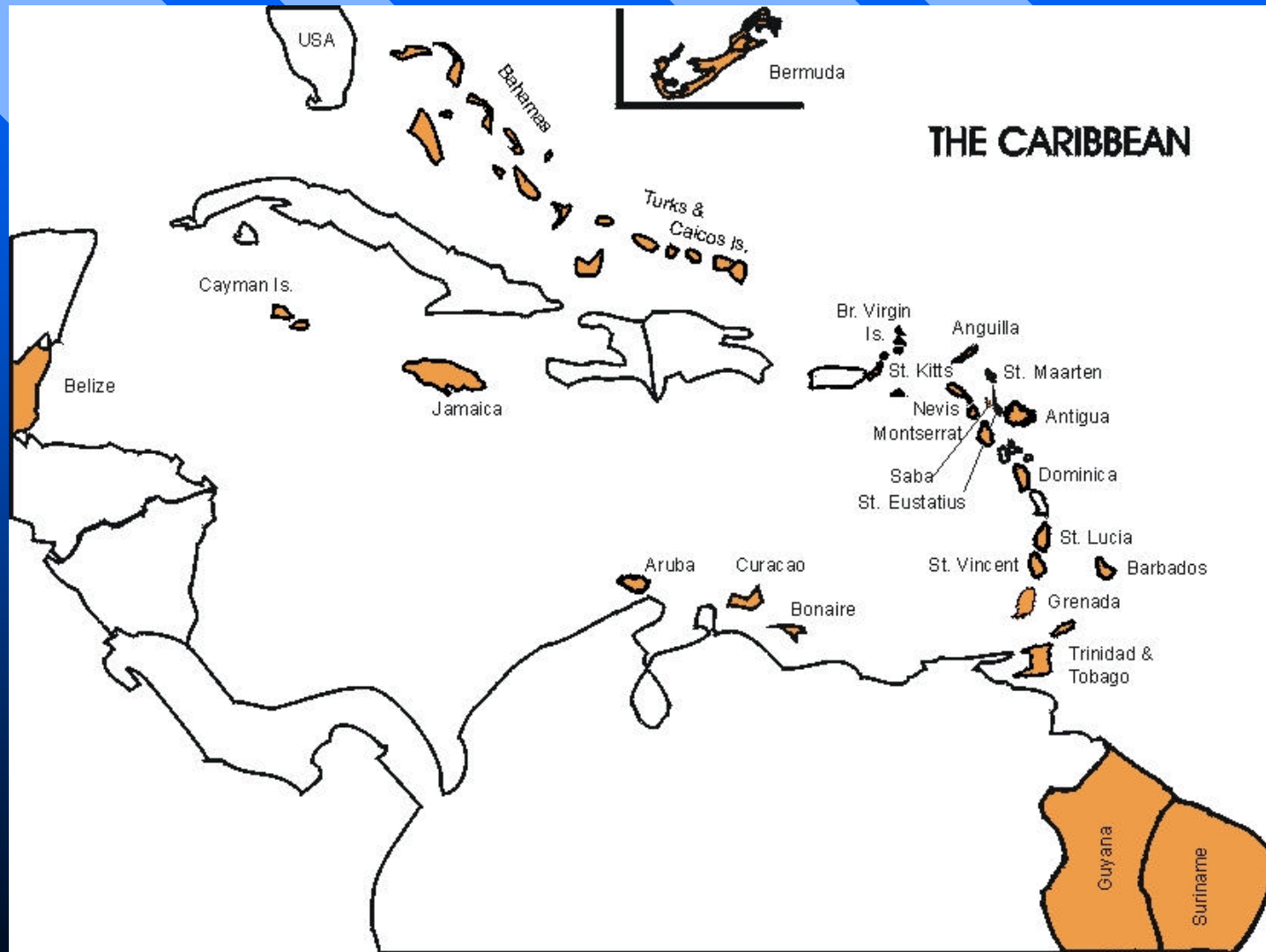
The Organisation - CAREC

Major Function:

Improving the health status of Caribbean people by advancing their capability in:

- Epidemiology
- Laboratory Technology
- Related Public Health disciplines

The Region



PT Management – Overview of Presentation

- Program Description
- Distribution Patterns
- Specimen Management
- Process Management – A Pilot Study
- Information Management

PT Management – Overview of Presentation

- Financial Management
- Challenges
- A QA Perspective
- Benefits
- Lessons Learnt/Conclusion

PT Program Description

- A Multi-level approach to PT

Management exists at CAREC

Level 1 -

Panels are prepared and managed exclusively by CAREC personnel.

PT Program Description

Level 2 -

Panels are obtained from external providers who also provide us with an analysis of the results.

PT Program Description

Level 3 -

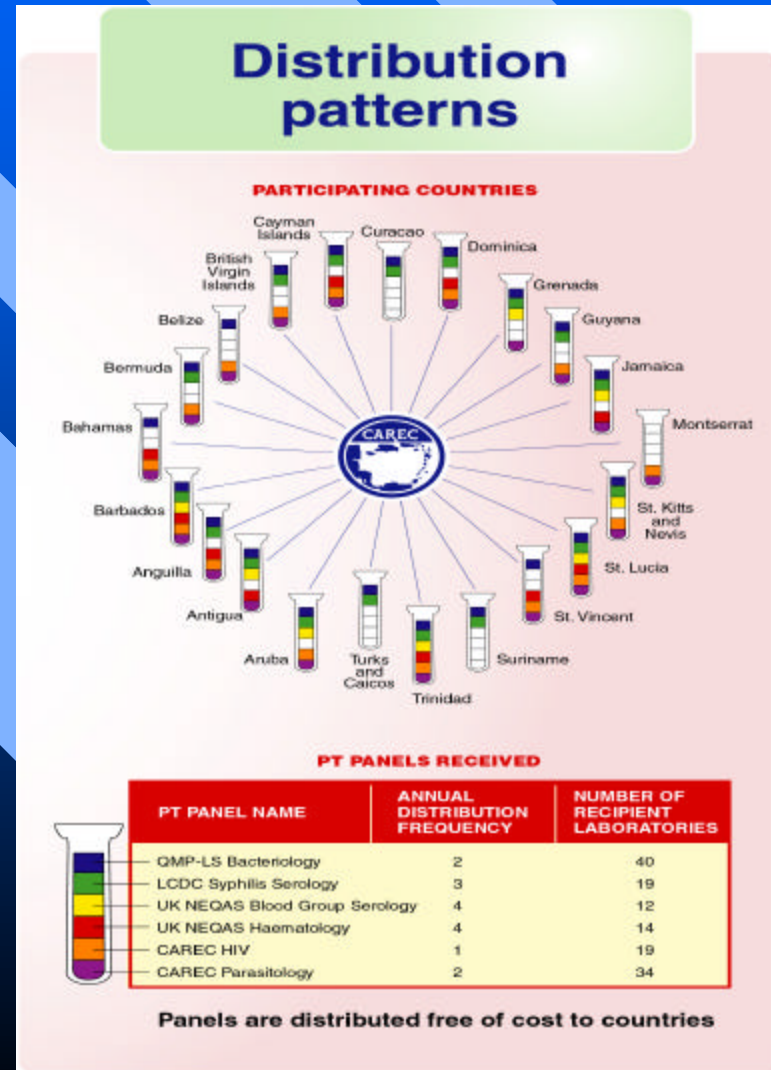
Panels are obtained from external providers for laboratory disciplines not included in our scope of work - analysis of results not forwarded to CAREC.

PT –Distribution Pattern

Recipient laboratories:

- Clinical
- Public Health
- Private
- Blood Screening

units



PT - Specimen Management

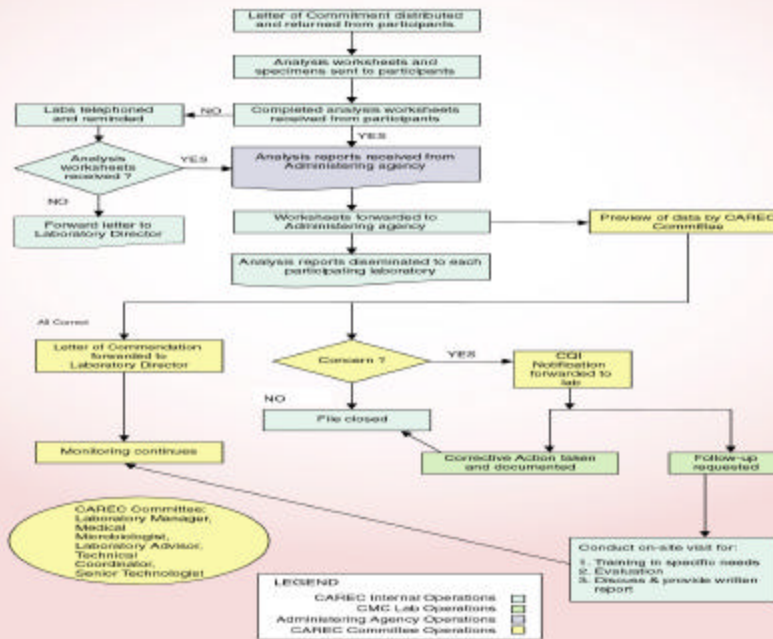
Program Name	Years of Existence
Bacteriology	>20
Blood Group Serology	5
Haematology	3
HIV Serology	12
Parasitology	>20
Syphilis Serology	7

PT - Specimen Management

Program Name	Type of specimen	Annual frequency	Origin of specimens
Bacteriology	Lyophilised isolate	Twice	Organism Bank
Blood Group Serology	Serum	Four times	Serum Bank
Haematology	Serum	Six times	Serum Bank
HIV Serology	Plasma	Once	Blood Bank
Parasitology	Blood/skin smear Faecal concentrate	Twice	Organism Bank Routine referral
Syphilis serology	Serum	Three times	Serum Bank

PT – Process Management- A Pilot Study

How have we started to manage our PT programs? Bacteriology - A Pilot Study



PT – Process Management- A Pilot Study

- Level of Laboratory determination was conducted to guide composition of PT panels.
- Determination was made via a self-administered questionnaire.

PT – Process Management- A Pilot Study

- Data was gathered in the following areas of operation:
 - Microscopy
 - Specimen type handled
 - Identification
 - Anti-microbial susceptibility testing

PT – Process Management- A Pilot Study

- Laboratories were determined to be:
 - Level 1, 2 or 3 (based on the complexity of their operations).

PT- Information Management

The establishment of an Information Management System is essential to support any PT program.

PT- Information Management

Data elements to consider:

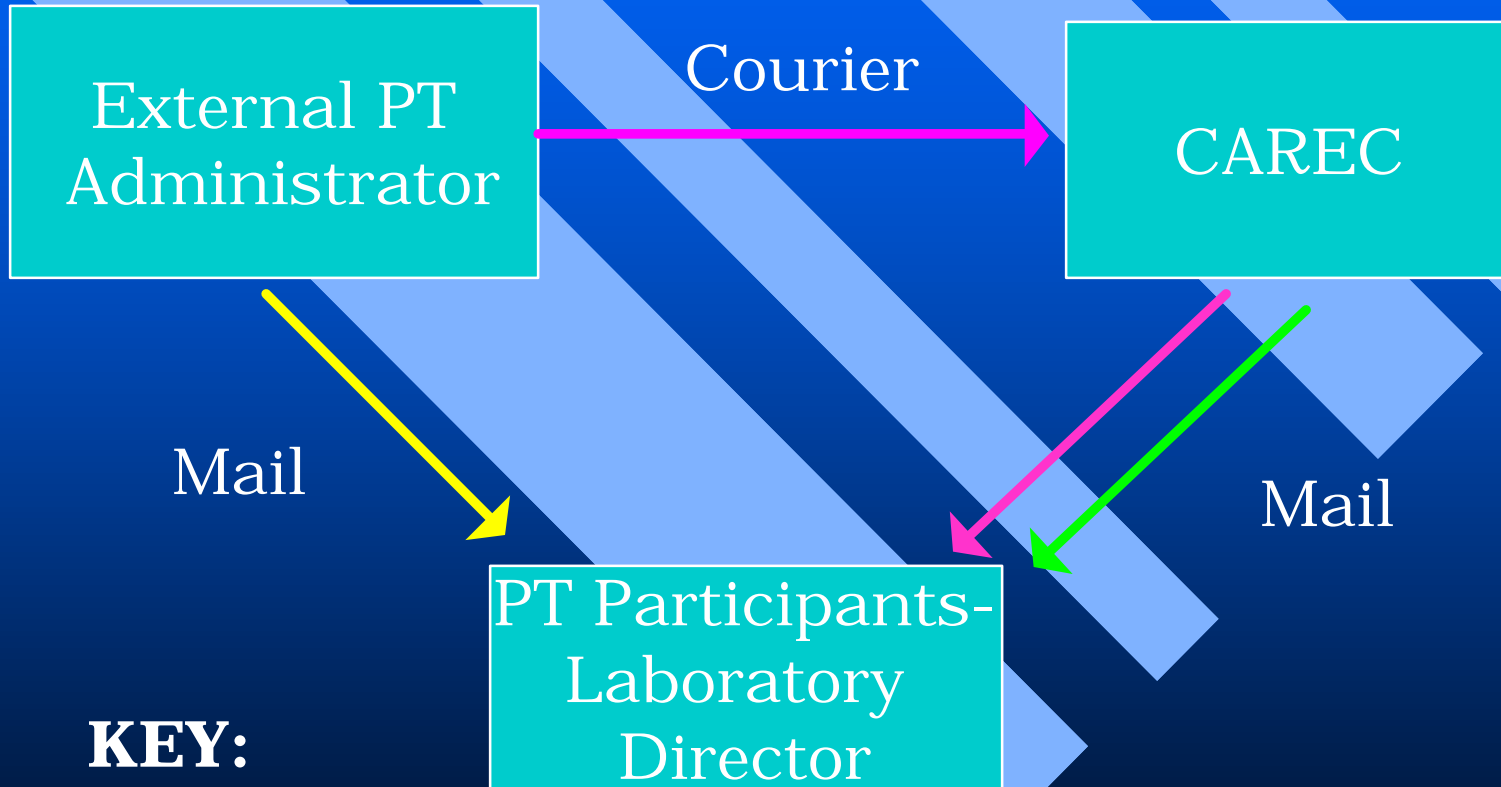
- Interest levels of laboratories
- Participation levels
- Performance rates
- Shipping details
- Troubleshooting initiatives
- Program Cost
- Participant feedback

PT- Information Management




Examples of Information gathering and monitoring tools:

- Time Tracker
- Letter of commitment
- Telephone Records
- Mailing list
- PT Specimen Log
- CQI Form

PT- Information Management - The paper trail



KEY:

-  Level 1 distribution
-  Level 2 distribution
-  Level 3 distribution

PT-

What are the costs ?

Cost Considerations:

- Labour
 - document and package preparation
- Shipping
 - courier, airline and brokerage fees
- Telecommunication
 - telephone, fax, e-mail
- Other
 - laboratory facility
 - materials

PT- How much does it cost ?

Program Name	PT Purchase Cost (\$ US)	Shipping & Misc. cost (\$ US)	Avg. participant cost (\$US)
Bacteriology	84	164	248
Blood Group Serology	-	26	26
Parasitology	6	21	27
Syphilis Serology	-	128	128
Haematology	-	32	32
HIV Serology	-	82	82

PT-

How do we meet the costs ?

- Core funds (member country quota contributions)
- Grant funds
- Support from PAHO/WHO
- Cost recovery to be introduced

PT - Operational Challenges

- Shipment of Infectious shipments in compliance with IATA regulations
- Availability of resources
- Encouraging participation in the absence of legislation
- Accessing PT material

PT- A Quality Assurance Initiative

Components of Laboratory Quality Assurance system



PT-

Benefits of participation

- Laboratory performance has improved.
- Some programs provide feedback which includes guidance for remedial action.
- Facilitation of interventions based on participant performance.

PT-

Lessons Learnt/Conclusion

In the Caribbean, good PT management requires:

- Extensive follow-up with participants to identify Quality Assurance issues.
- Encouraging participants to process PT material as routine specimens.

PT-

Lessons Learnt/Conclusion

In the Caribbean, good PT management requires:

- Introduction and enforcement of legislation.
- Continuing IATA DGR training.

PT-

Lessons Learnt/Conclusion

In the Caribbean, good PT management requires:

- Continued negotiations with air transport agencies and regional governments to facilitate resolution of shipping issues.
- Commitment by participant laboratories.

PT MANAGEMENT

THANK YOU

FEEDBACK AND QUESTIONS