

## New York (NYISO) Electric Regions



## New York Electric Market: Overview and Focal Points

Federal Energy Regulatory Commission • Market Oversight • [www.ferc.gov/oversight](http://www.ferc.gov/oversight)

### Overview

#### Geography

State covered: New York

Reliability region: New York ISO (NYISO) sub-region of the Northeast Power Coordinating Council (NPCC)

Balancing authority: NYISO

Zones: Capital (Zone F), Central (Zone C), Dunwoodie (Zone I), Genesee (Zone B), Hudson Valley (Zone G), Long Island (Zone K), Millwood (Zone H), Mohawk Valley (Zone E), New York City (Zone J), North (Zone D), West (Zone A)

#### RTO/ISO

NYISO (established 1999) operates the region's power grid and wholesale electric markets:

- Energy market: two-settlement (day ahead and real-time) spot market with locational marginal pricing,
- Regional and locational capacity market, and
- Financial transmission rights market.

#### [NYISO 2008 State of the Markets Report](#)

Market Monitor:

Nicole Bouchez – Manager, Internal Market Monitor, New York ISO

David Patton – Independent Market Advisor, Potomac Economics, LTD.

## New York Electric Market: Overview and Focal Points

Federal Energy Regulatory Commission • Market Oversight • [www.ferc.gov/oversight](http://www.ferc.gov/oversight)

### **RTO/ISO (continued)**

Also, market participants trade electricity bilaterally through brokers, the Intercontinental Exchange (ICE) and the New York Mercantile Exchange's (Nymex) ClearPort, using Zone A (West) as a pricing point.

### **Generation/Supply**

Marginal fuel type: natural gas

Generating capacity (summer 2006): 39,704 MW

Capacity reserve (summer 2006): 5,765 MW

Reserve margin (summer 2006): 17%

The New York City metropolitan area (NYC) and Long Island (LI) are areas of concentrated demand. Both localities have requirements for installed generating capacity that are more stringent than the rest of the region, to ensure reliability of service.

### **Demand**

All time peak demand: 33,939 MW (set August 2, 2006)

In summer of 2006, demand reached record levels on several occasions due to extremely hot weather.

Peak demand growth: 5.6 % (2006-2005)

Summer Peak Demand (MW) 28,433 (2004), 32,075 (2005), 33,939 (2006) (Source: NYISO)

Load pockets: Zone J New York City and Zone K Long Island

*Updated August 3, 2007*

1027

## New York Electric Market: Overview and Focal Points

---

Federal Energy Regulatory Commission • Market Oversight • [www.ferc.gov/oversight](http://www.ferc.gov/oversight)

### Prices

#### Annual Average Day-Ahead Price

##### Zone J New York City

**2004:** \$63.16/MWh

**2005:** \$93.77/MWh

**2006:** \$70.90/MWh

##### Zone K Long Island

**2004:** \$63.20/MWh

**2005:** \$99.32/MWh

**2006:** \$86.15/MWh

Prices increased in 2005 as a result of disturbances to the natural gas market. Prices declined in 2006 as natural gas storage levels remained above historical ranges throughout the injection season (April through October).

## Annual Average Bilateral Prices

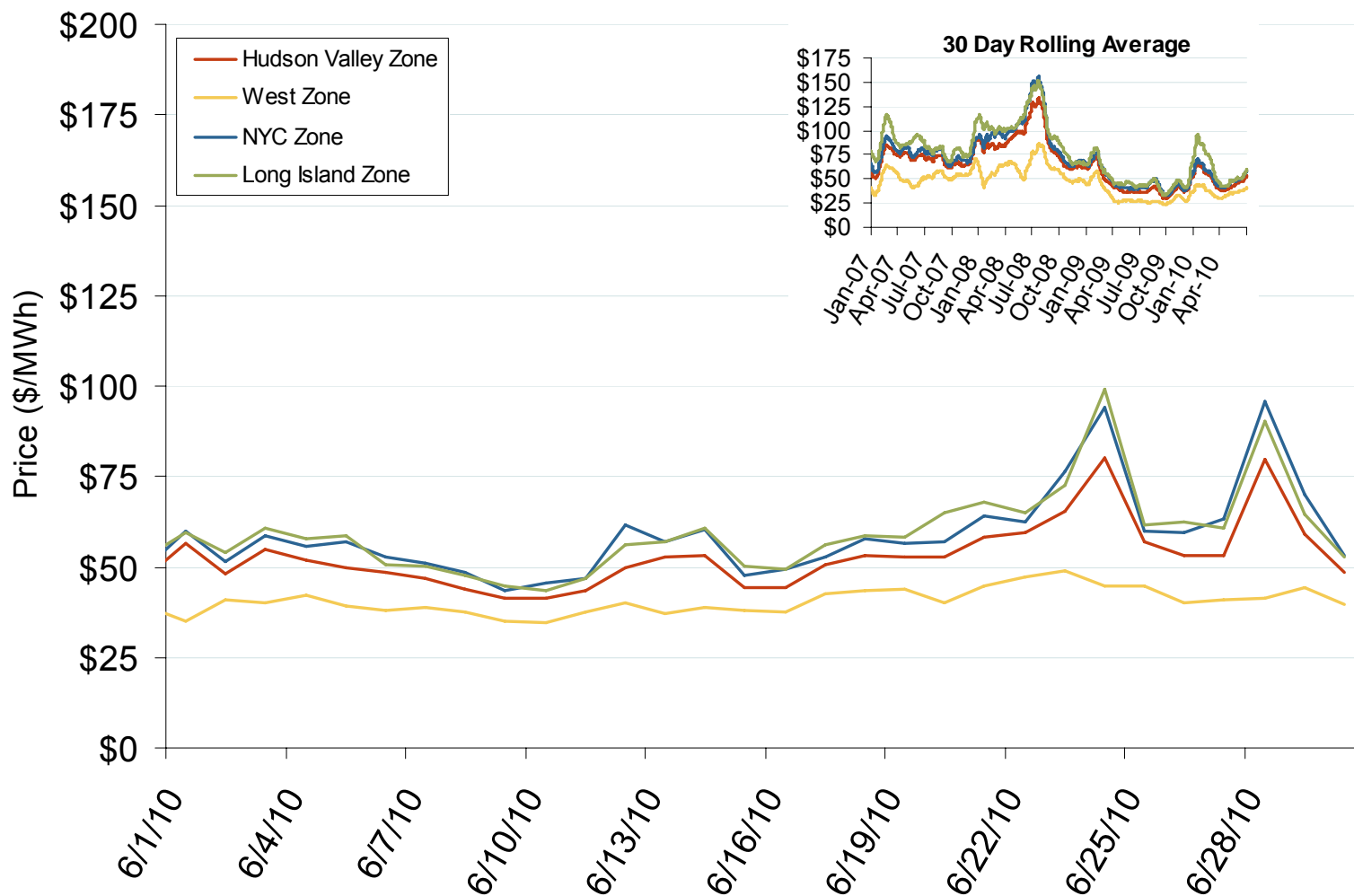
Annual Average Day Ahead On Peak Prices (\$/MWh)						
	2005	2006	2007	2008	2009	5-Year Avg
Mass Hub	\$89.87	\$69.85	\$77.39	\$91.55	\$46.24	\$74.97
Ny Zone G	\$92.46	\$75.95	\$83.51	\$100.99	\$49.80	\$80.53
NY Zone J	\$110.03	\$85.96	\$94.15	\$112.63	\$55.77	\$91.69
NY Zone A	\$76.04	\$58.70	\$64.02	\$68.34	\$35.54	\$60.51
PJM West	\$76.64	\$61.90	\$71.15	\$83.70	\$44.60	\$67.59

Source: Derived from *Platts* data.

Updated January 8, 2010

1029

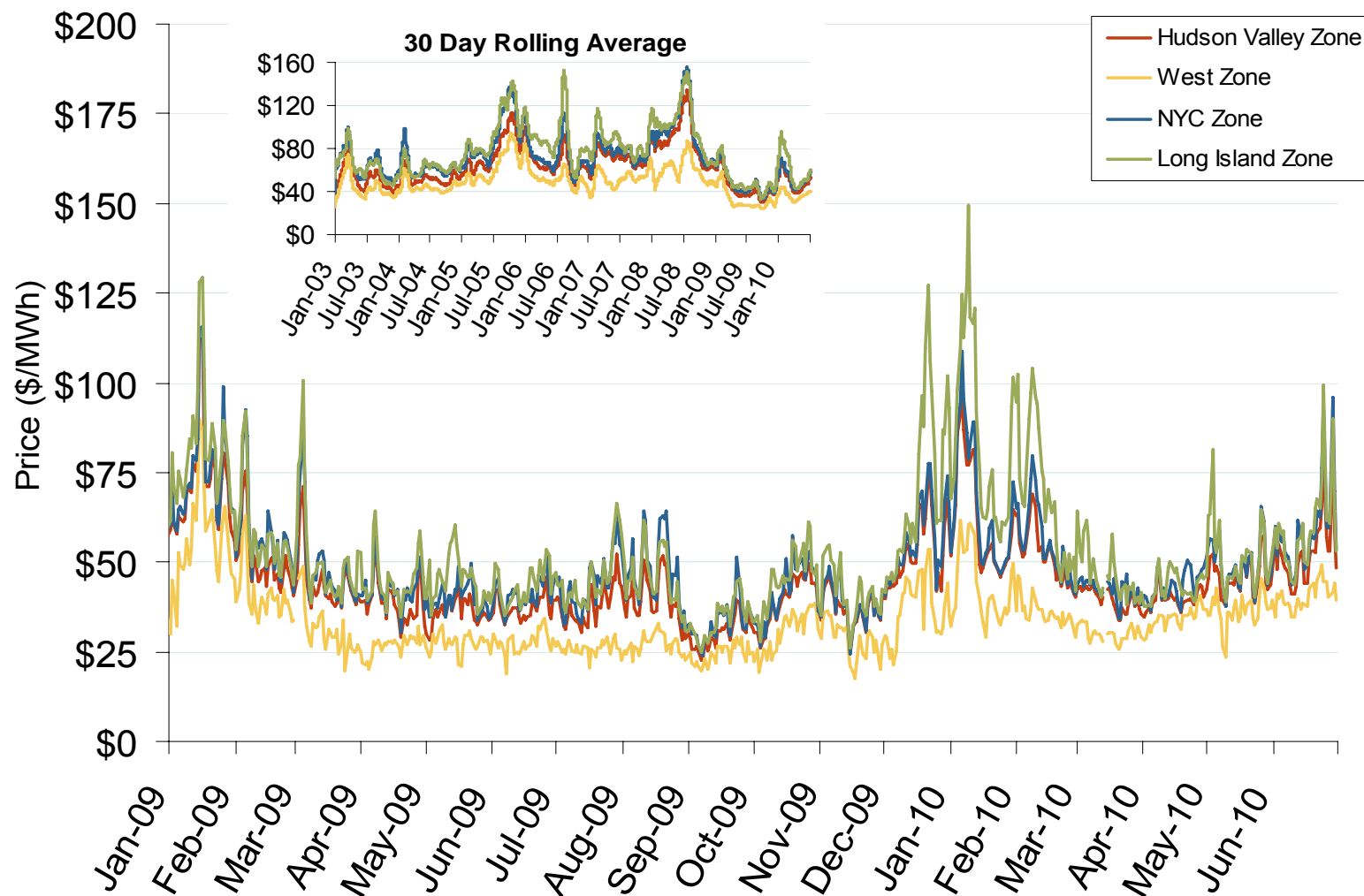
## New York Electric Market: Last Month's RTO Prices

Federal Energy Regulatory Commission • Market Oversight • [www.ferc.gov/oversight](http://www.ferc.gov/oversight)**Daily Average of NYISO Day-Ahead Prices - All Hours**Source: Derived by *Bloomberg* from NYISO data as reported by *Bloomberg*.

Updated July 9, 2010

1130

## Daily Average of NYISO Day-Ahead Prices - All Hours

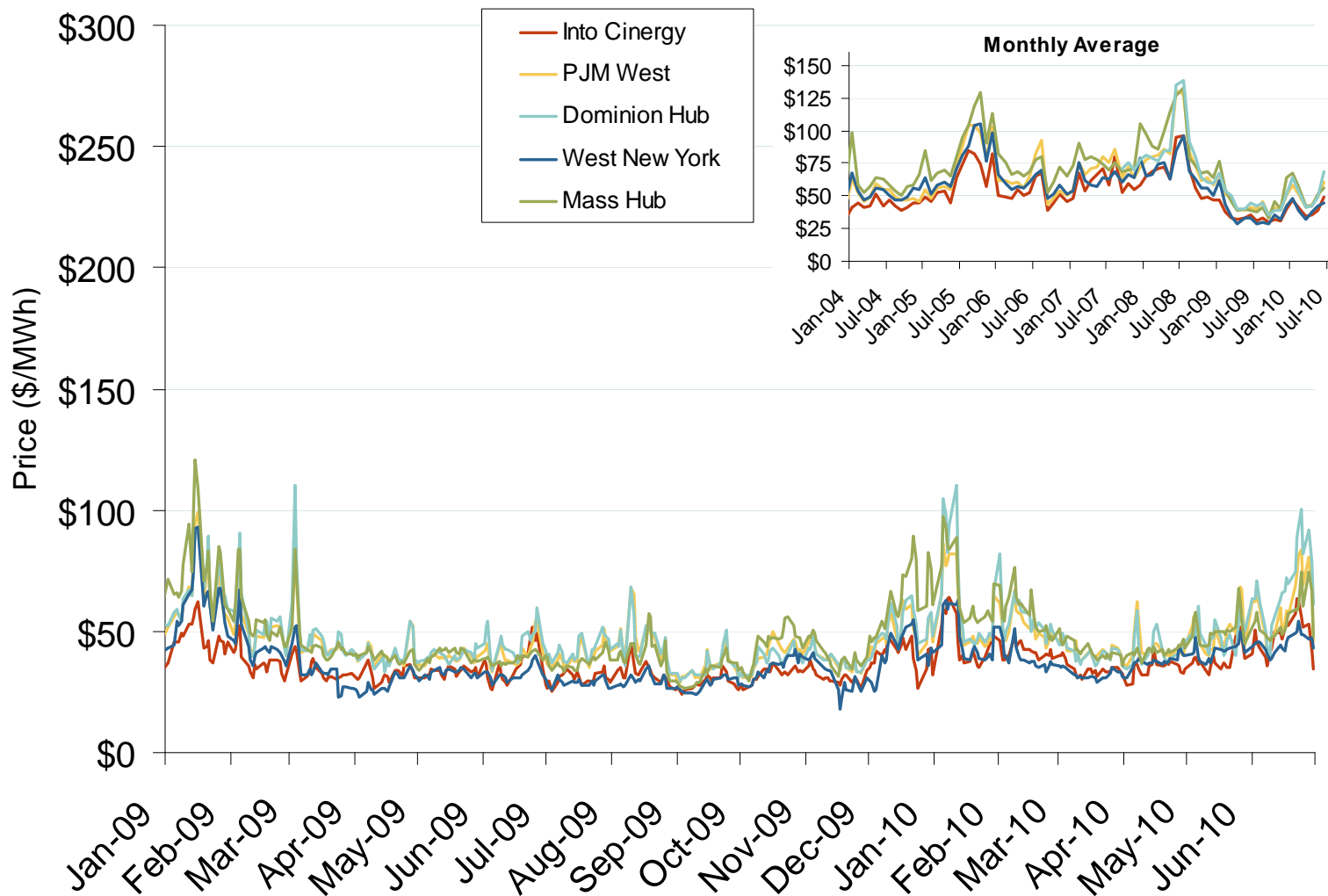


Source: Derived by *Bloomberg* from NYISO data as reported by *Bloomberg*.

Updated July 9, 2010

1030

## Eastern Daily Bilateral Day-Ahead On-Peak Prices



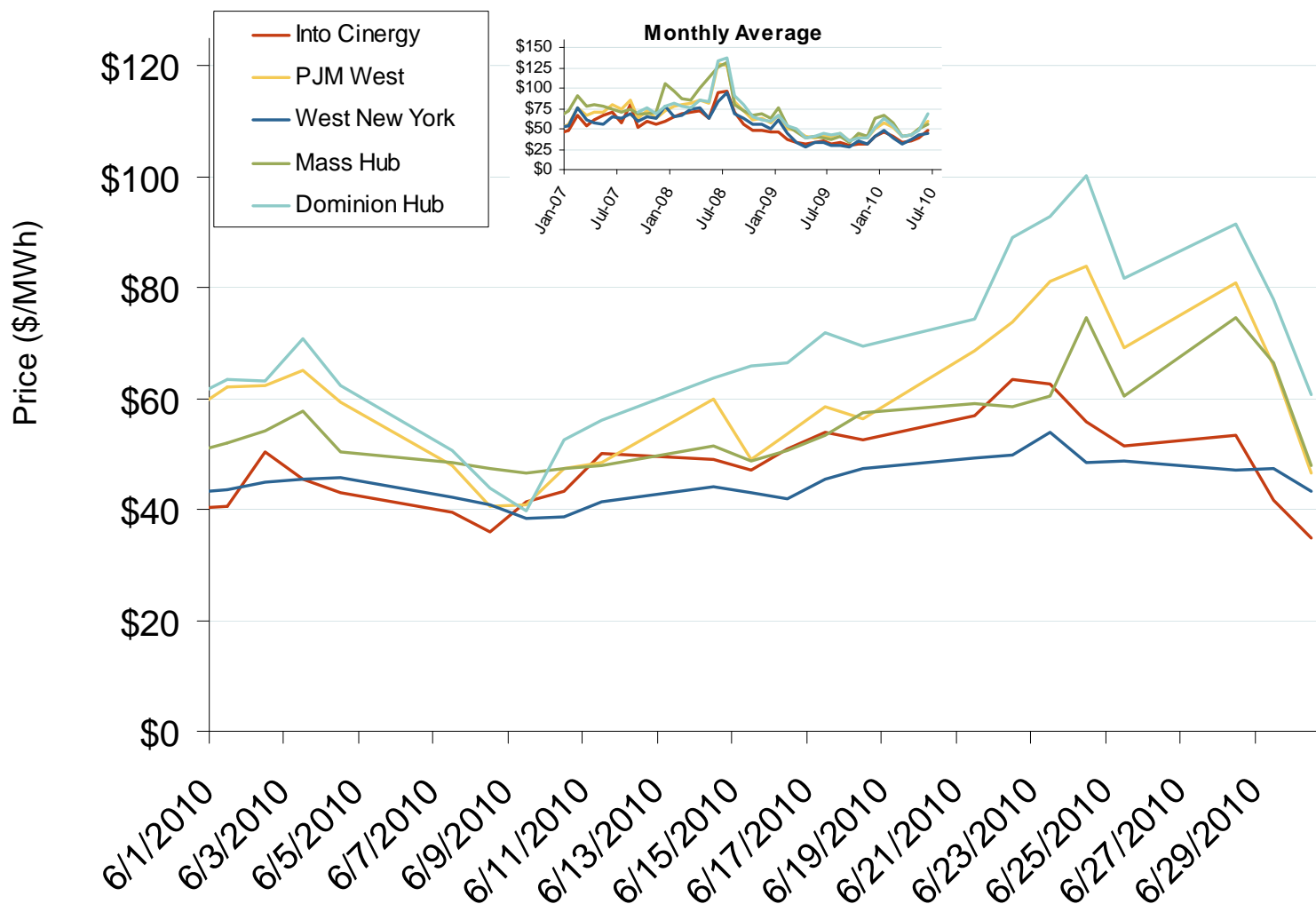
Source: Derived from *Platts* data.

Updated July 9, 2010

1031



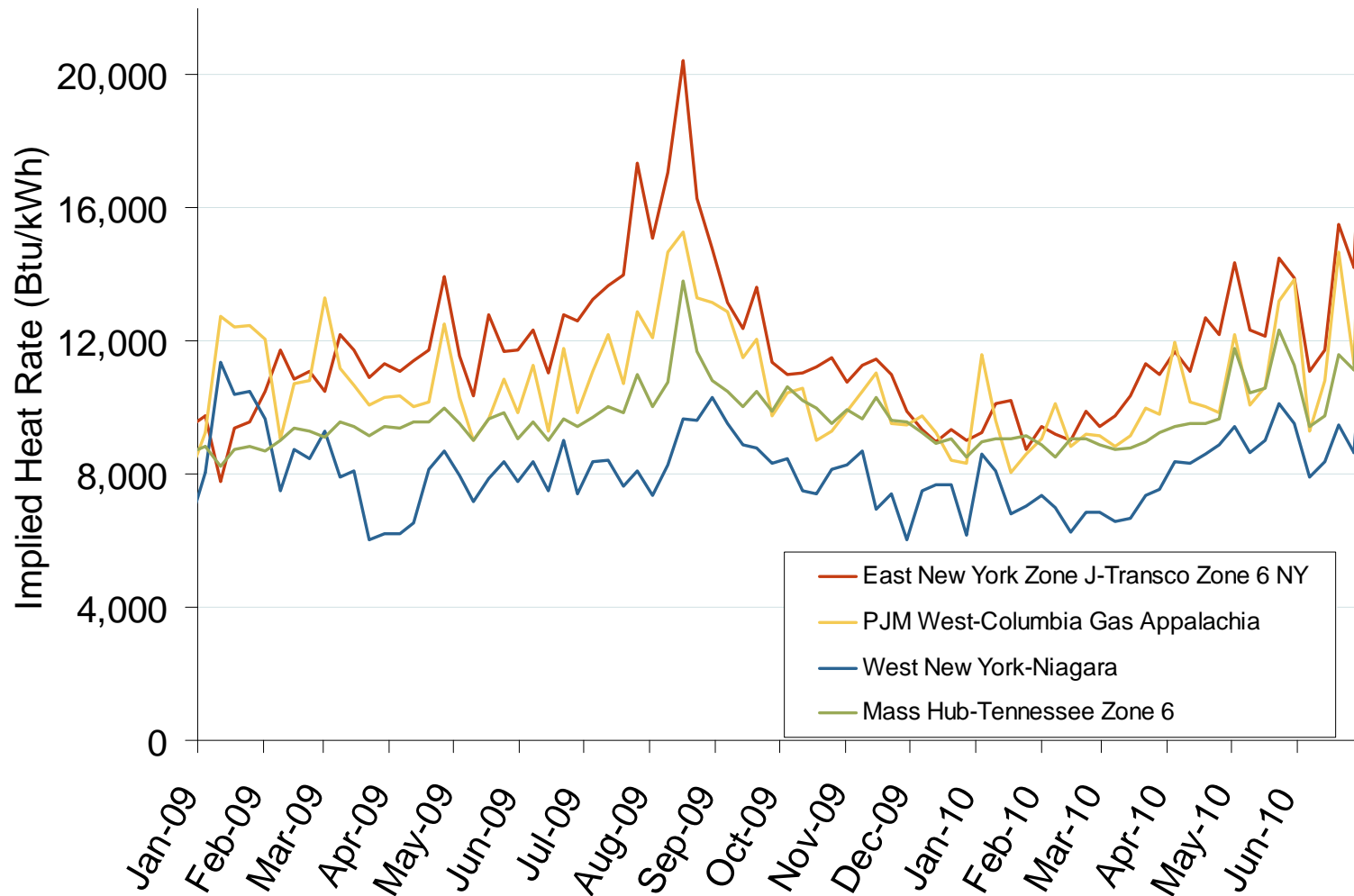
## Eastern Daily Bilateral Day-Ahead On-Peak Prices



Source: Derived from *Platts* data.

Updated July 9, 2010

## Implied Heat Rates at Eastern Trading Points Weekly Averages

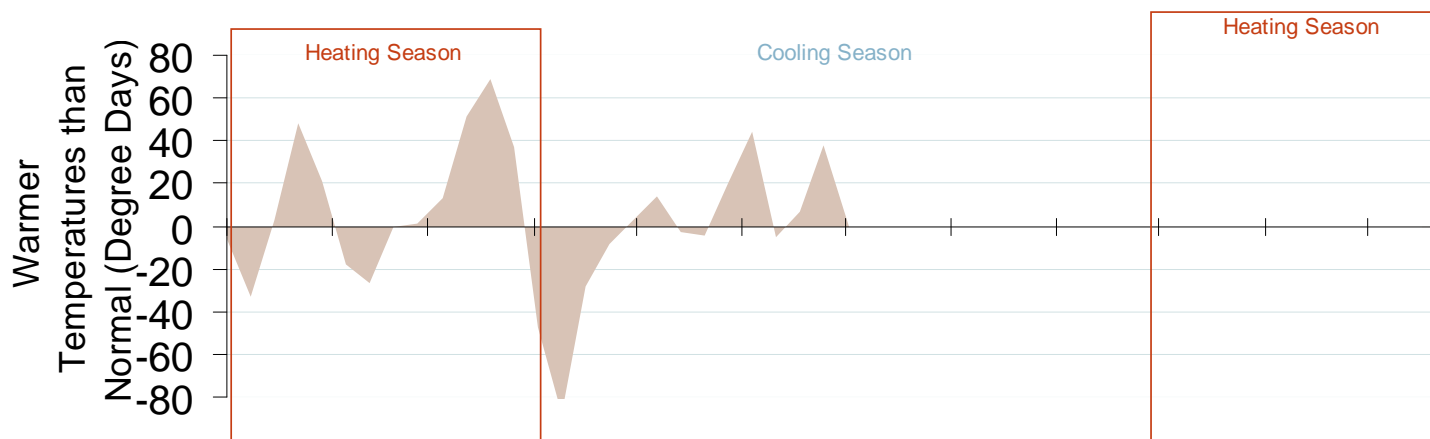
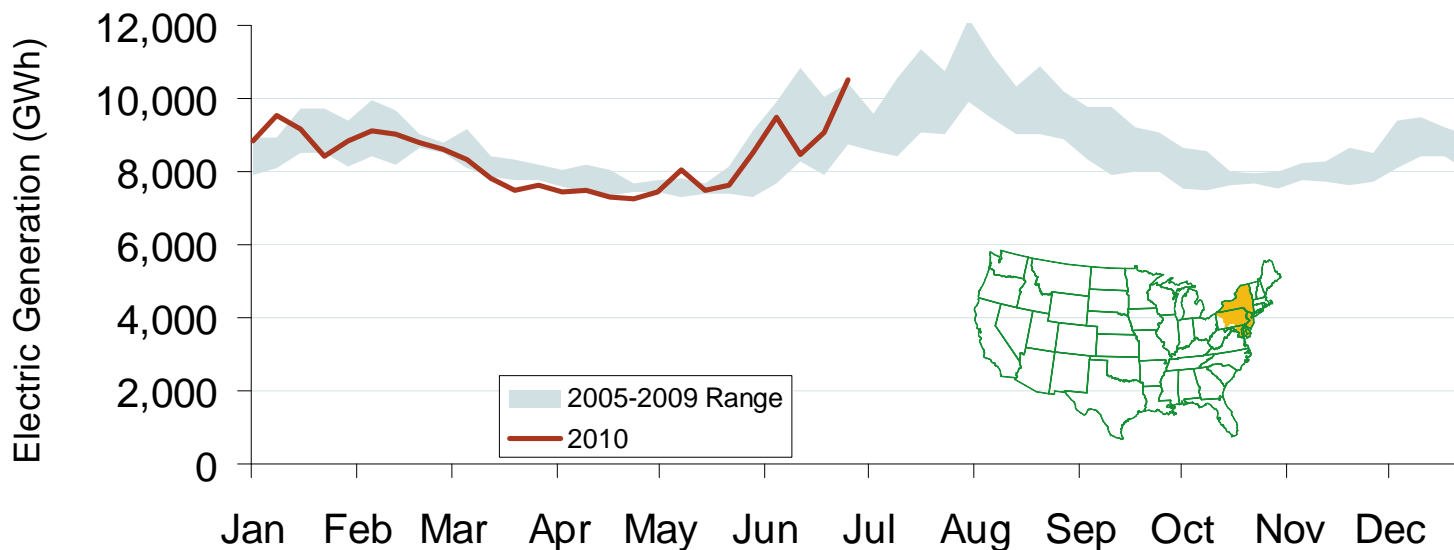


Source: Derived from *Platts* on-peak electric and natural gas price data.

Updated July 9, 2010

1137

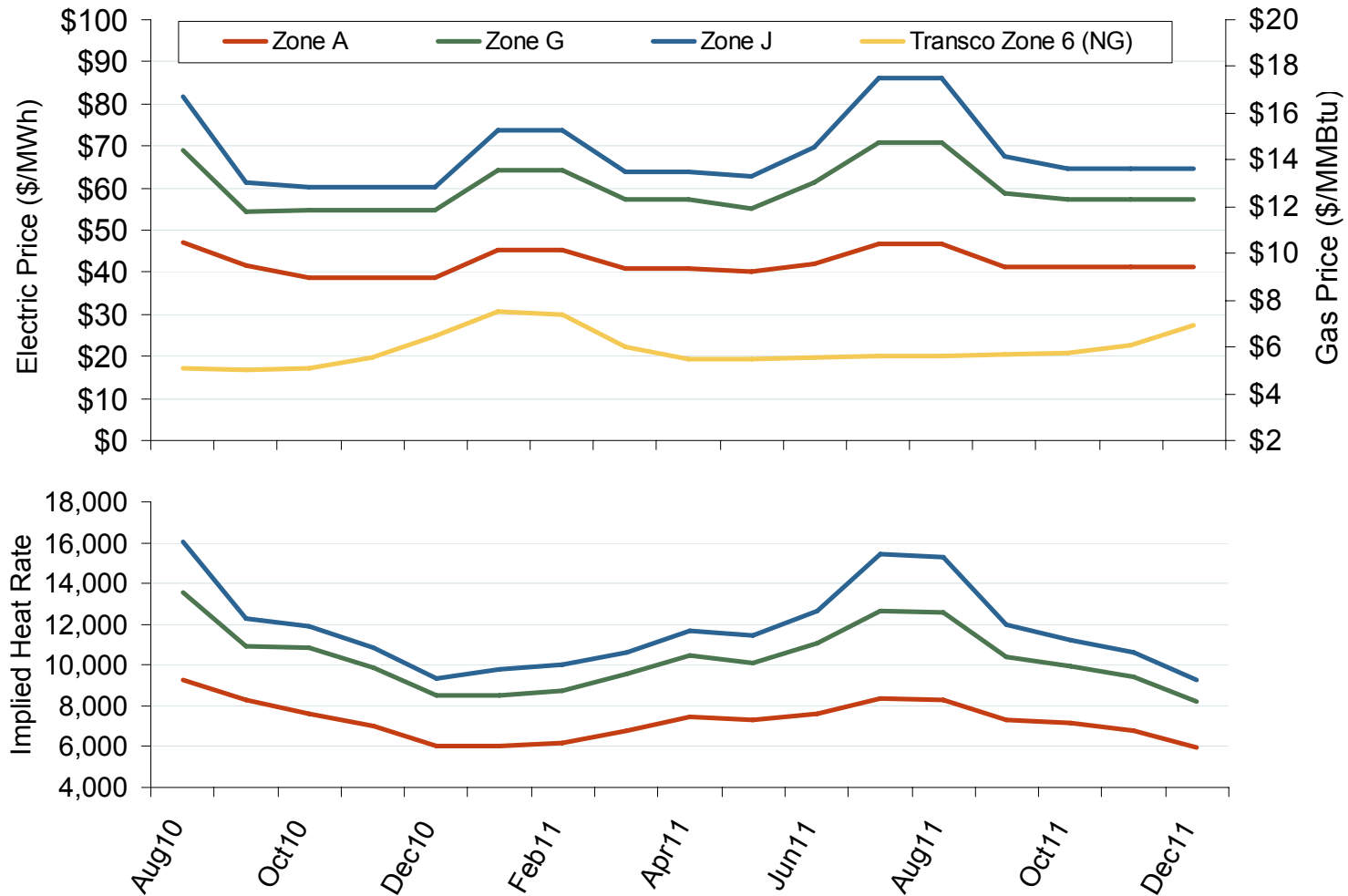
## Weekly Electric Generation Output and Temperatures Mid Atlantic Region



Source: Derived from *EI* and NOAA data.

Updated July 9, 2010

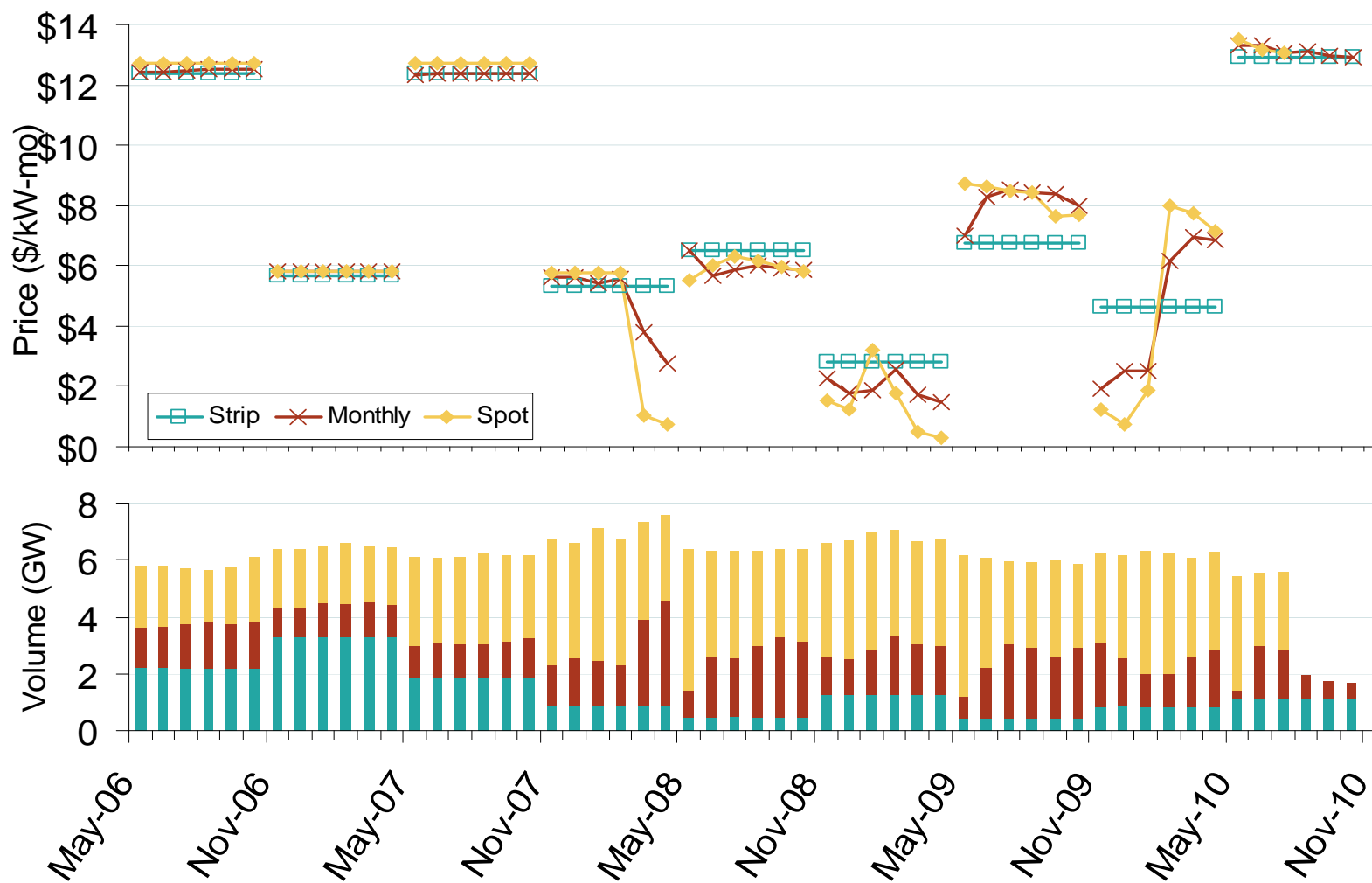
## New York Electric Forward Price Curves and Implied Heat Rates



Source: Derived from Nymex data.

Updated July 9, 2010

## Weighted Average ICAP Clearing Prices and Volumes: New York City

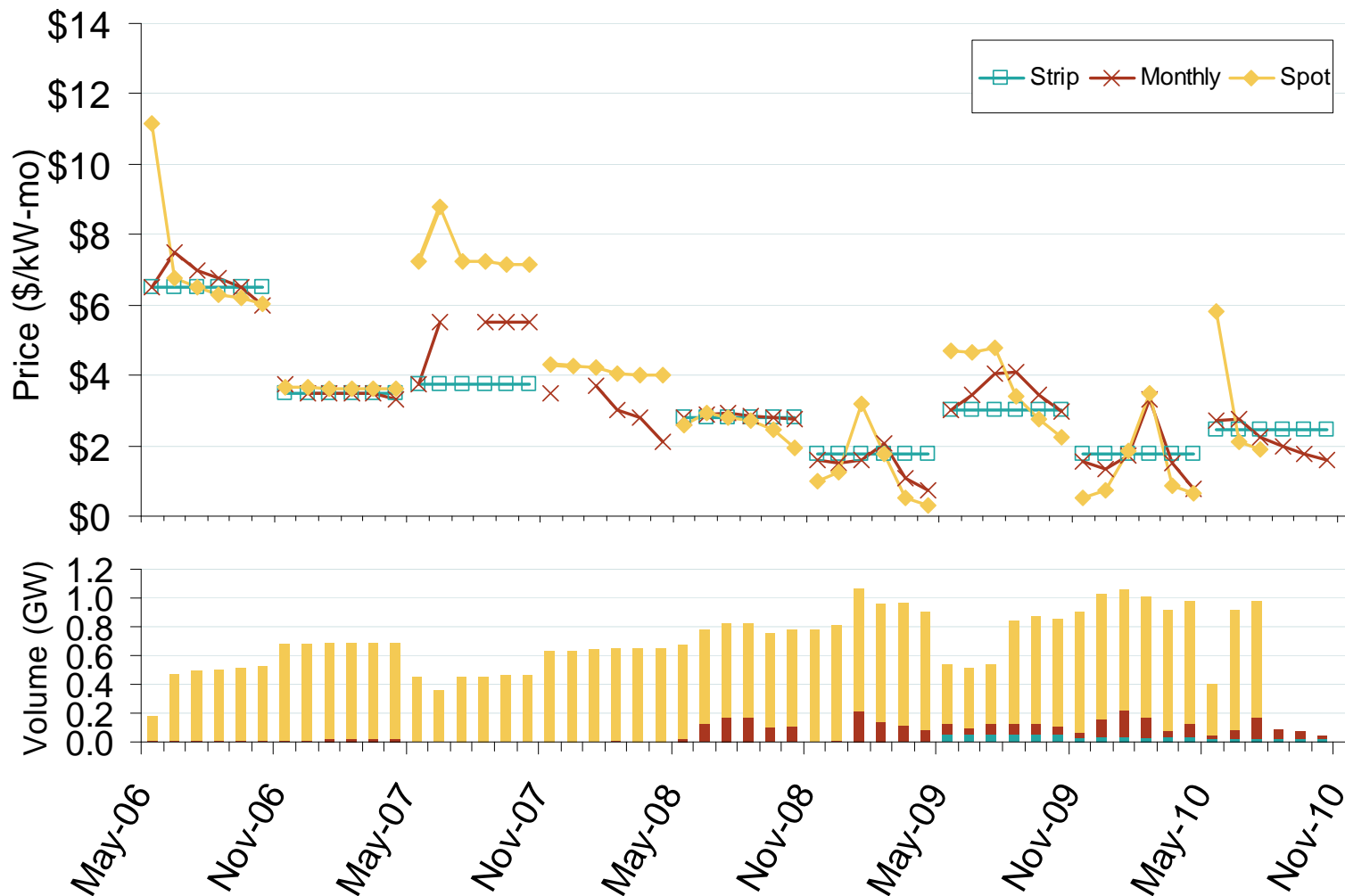


Source: Derived from NYISO data.

Updated July 9, 2010

1033

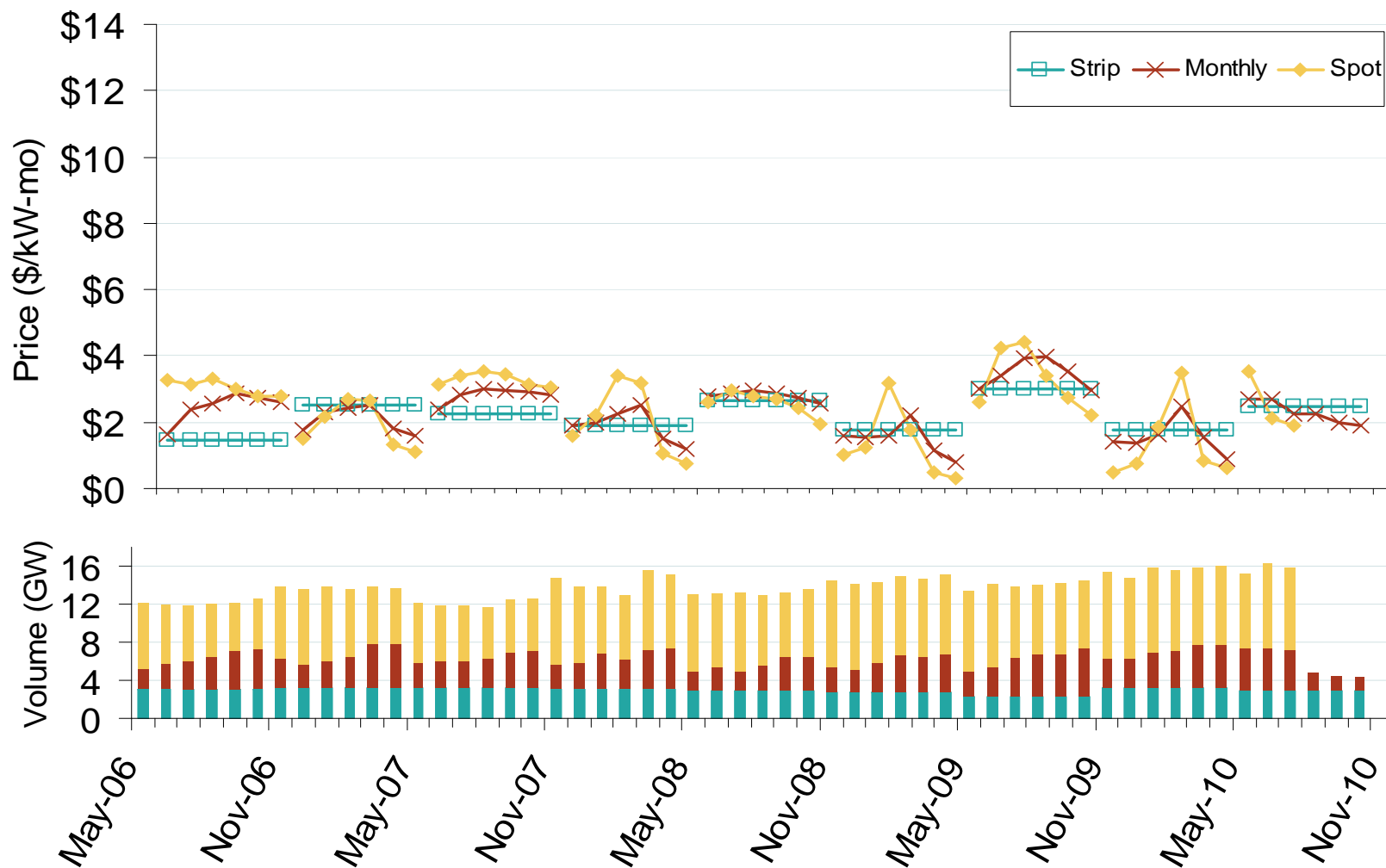
# Weighted Average ICAP Clearing Prices and Volumes: Long Island



Source: Derived from NYISO data.

Updated July 9, 2010

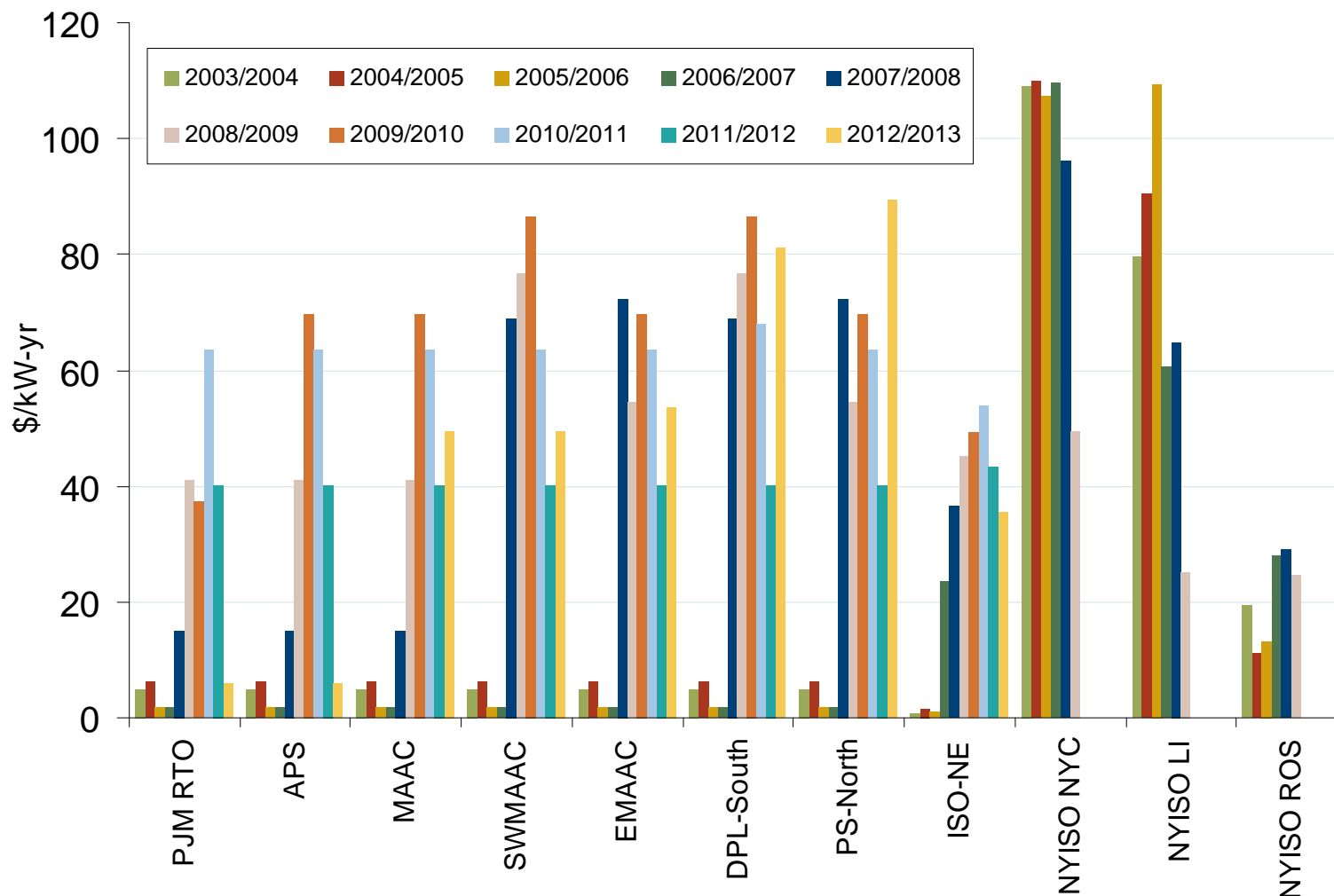
## Weighted Average ICAP Clearing Prices and Volumes: Rest of New York State



Source: Derived from NYISO data.

Updated July 9, 2010

## PJM, NYISO and ISO-NE Capacity Auction Prices



Note: PJM values are for Base Residual Auctions only.

ISO-NE results are based on preliminary FCM auction before pro-rationing and EAS adjustment.

Source: Derived from PJM, NYISO and ISO-NE data

Updated October 7, 2009

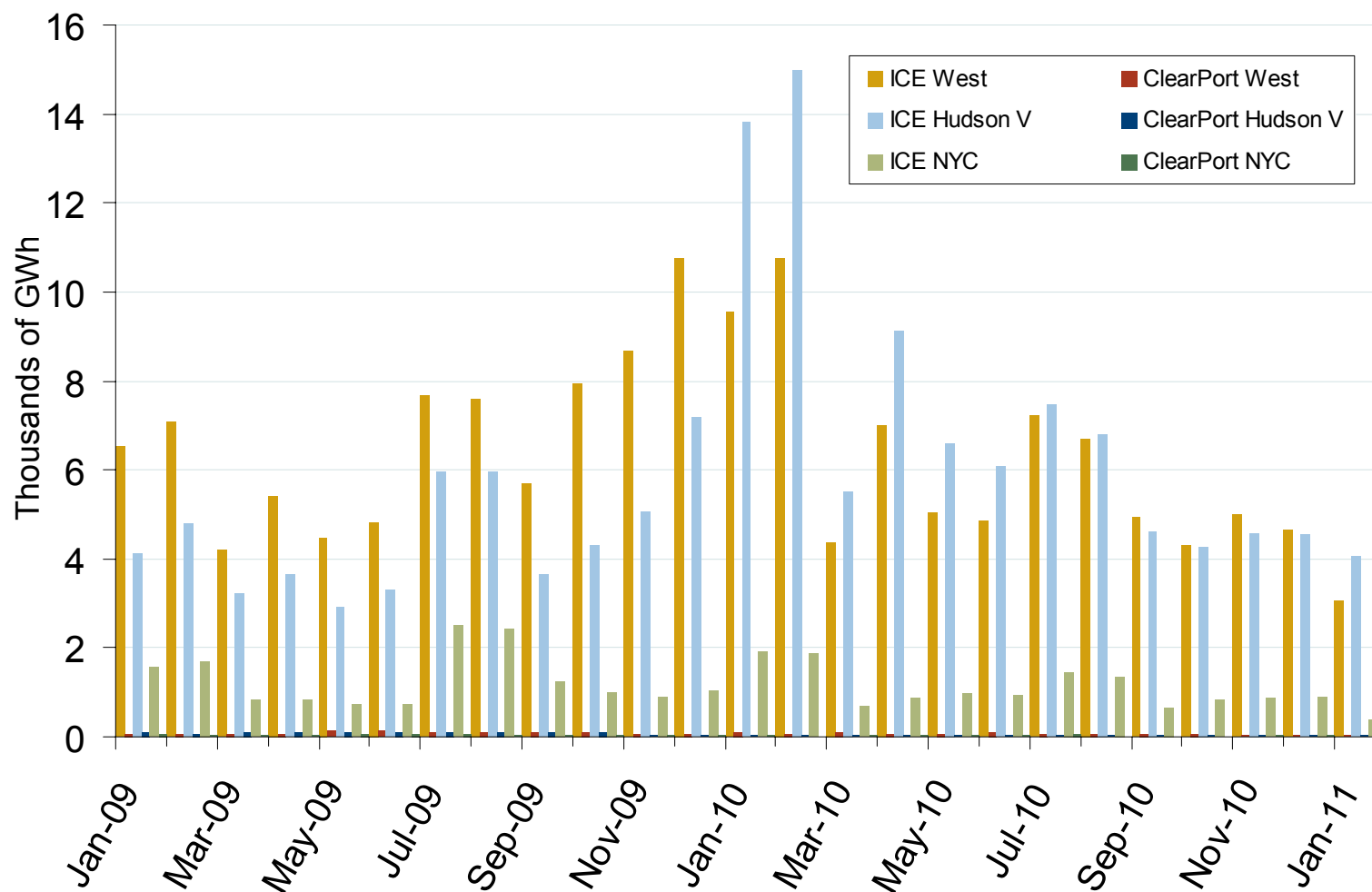
1145



## New York Electric Market: Financial Market Volumes

Federal Energy Regulatory Commission • Market Oversight • [www.ferc.gov/oversight](http://www.ferc.gov/oversight)

## Various New York Swap Volumes



Source: Derived from ICE and Nymex ClearPort data. ICE on-peak swaps (financial) volume are for zones A, G and J and include monthly, dual monthly, quarterly, and calendar year contracts traded for each month. Nymex ClearPort on-peak swaps (financial) volume are for zones A, G and J and are traded by month.

Updated July 9, 2010

1032