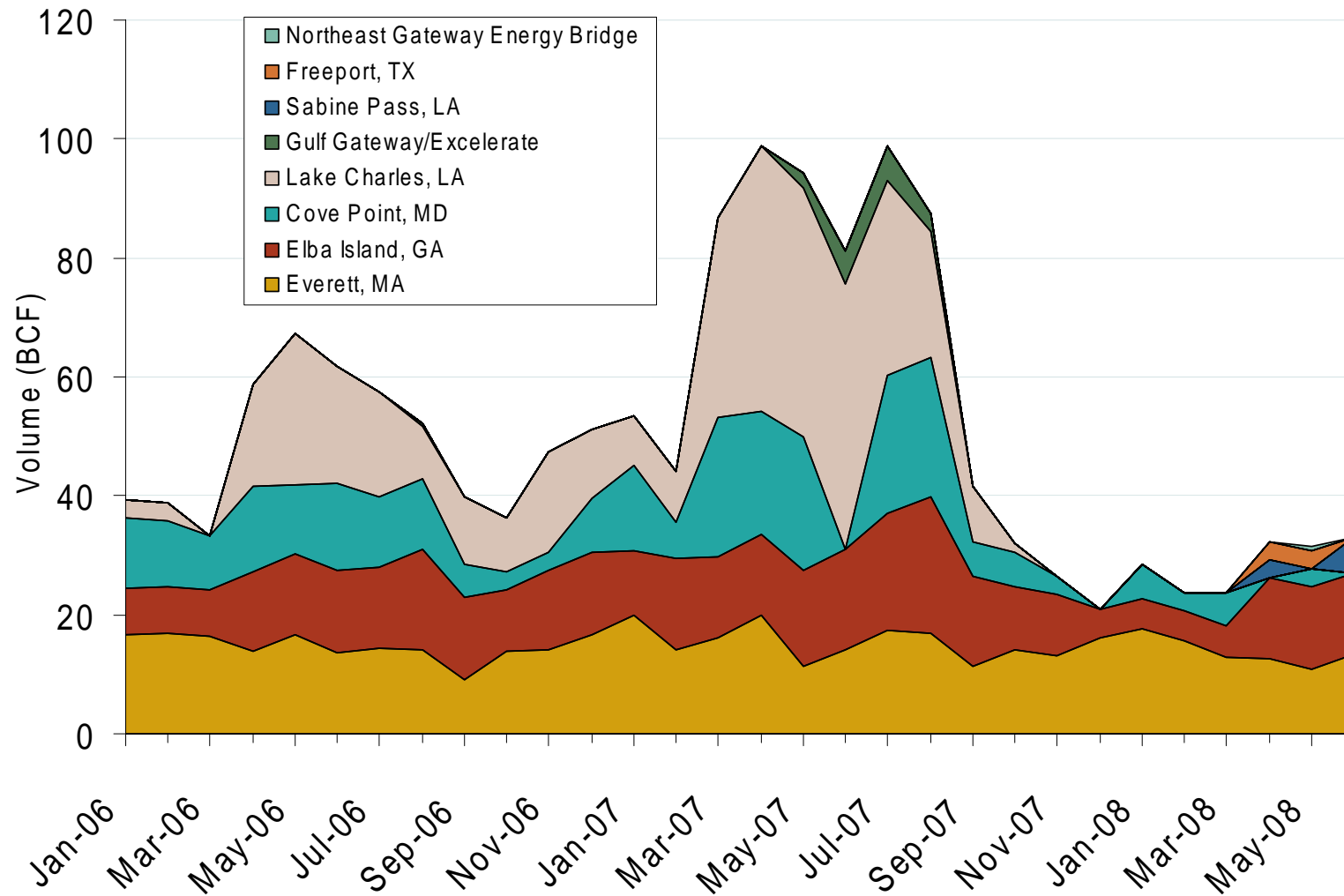
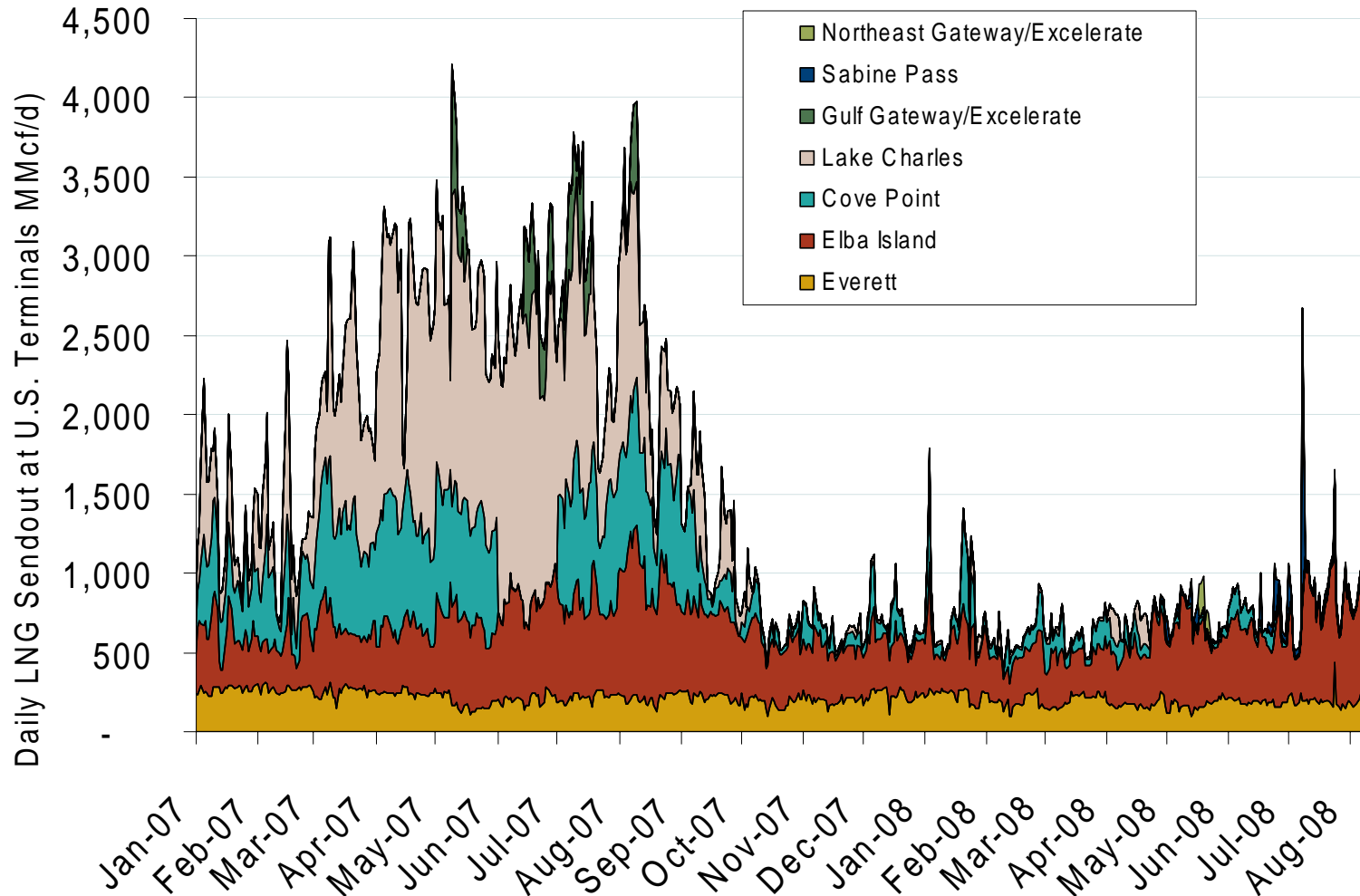


Monthly Gas Imports at Existing U.S. LNG Facilities



Source: Derived from DOE Office of Fossil Energy data.

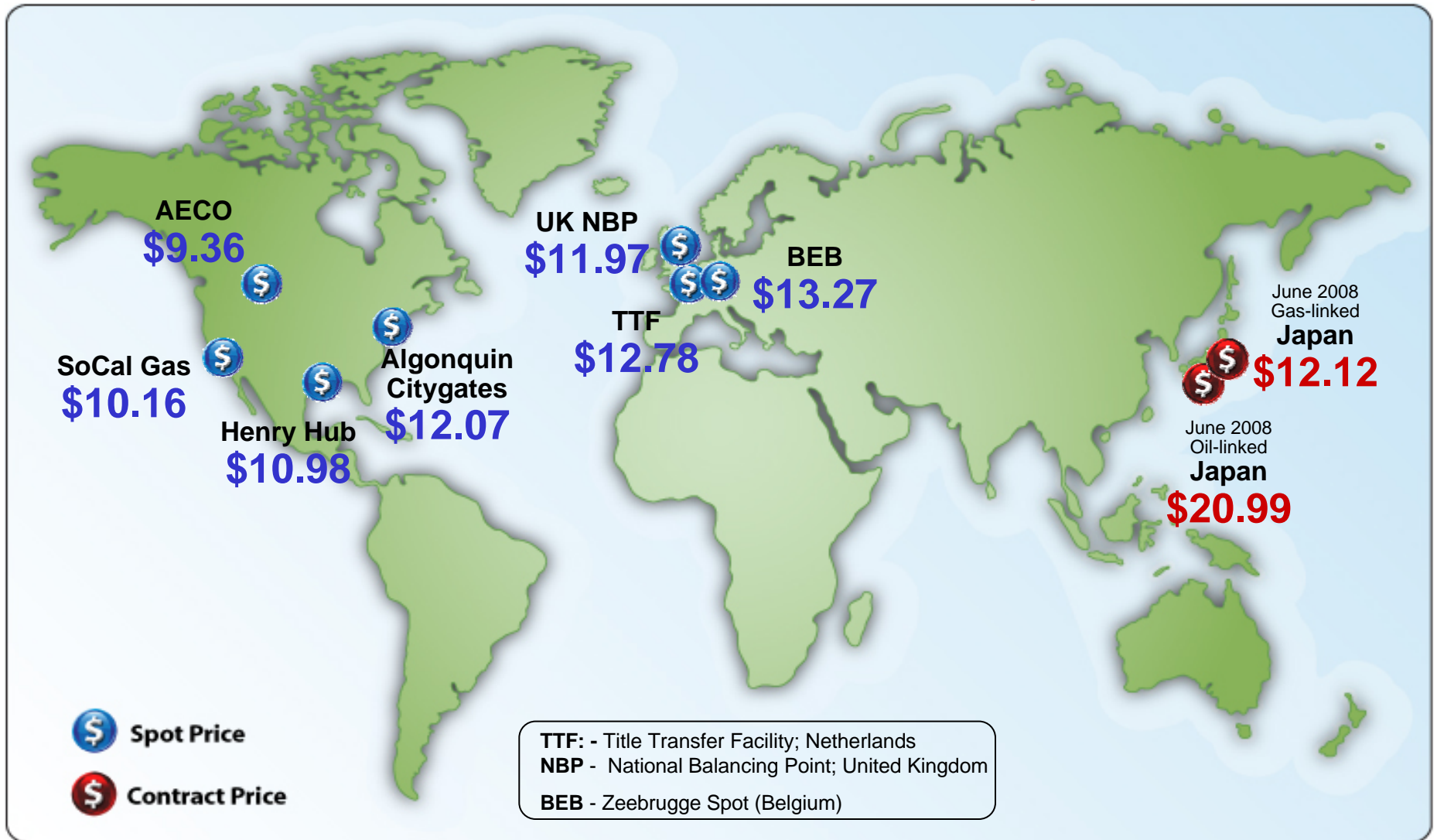
Daily Gas Sendout from Existing U.S. LNG Facilities



Source: Derived from *Bentek* data. Excludes Everett LNG delivered via truck and consumed by the Mystic plant as well as Freeport LNG which flows via intrastate pipelines.

Updated August 14, 2008 3007

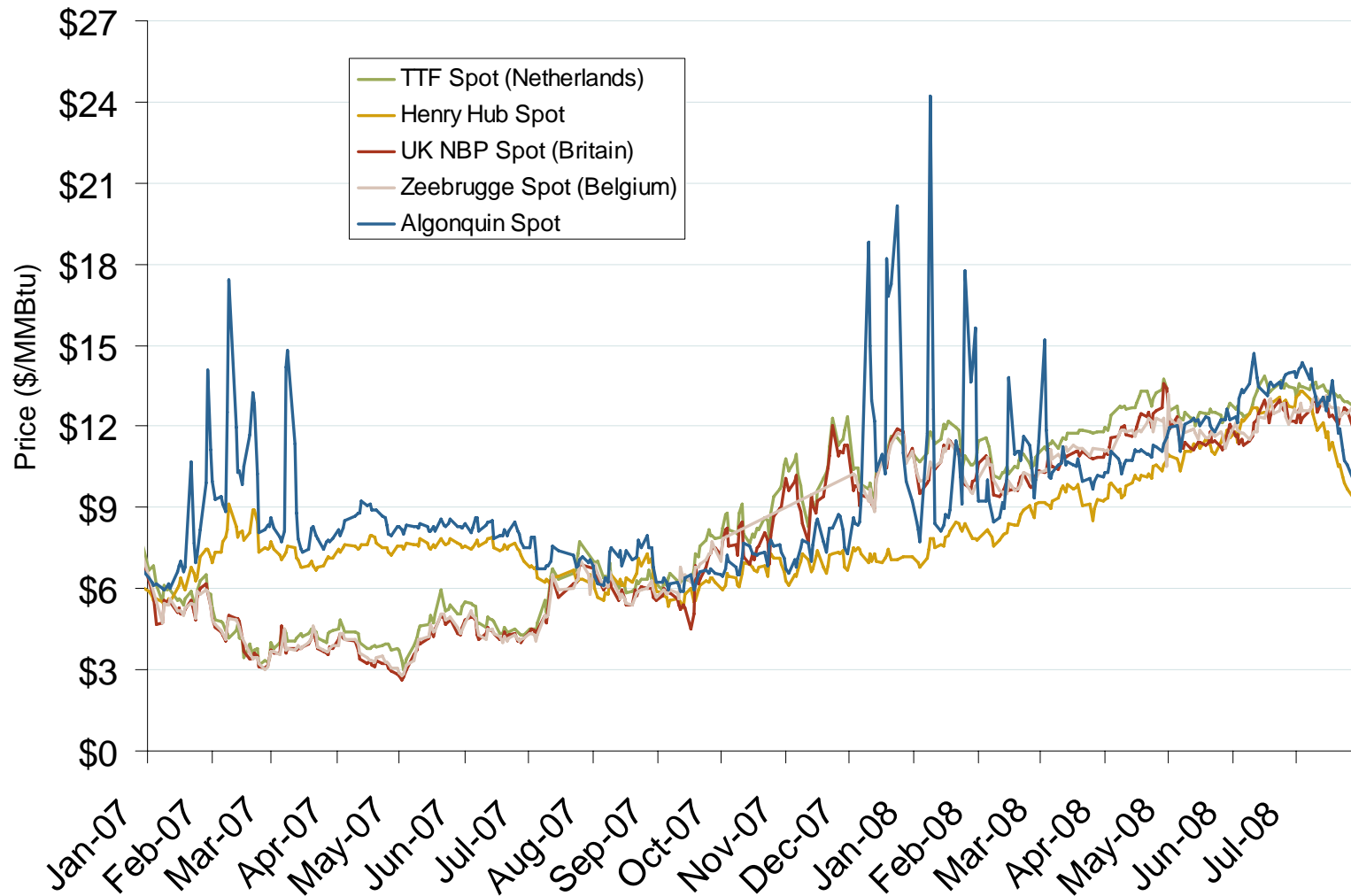
World Natural Gas Prices for July 2008



Source: Derived from *Bloomberg, ICE, ICAP and LNG Japan Corp.* data. Spot Price is a monthly average of daily prices. Contract Price is a monthly price. All prices in \$US/MMBtu.

Updated August 14, 2008

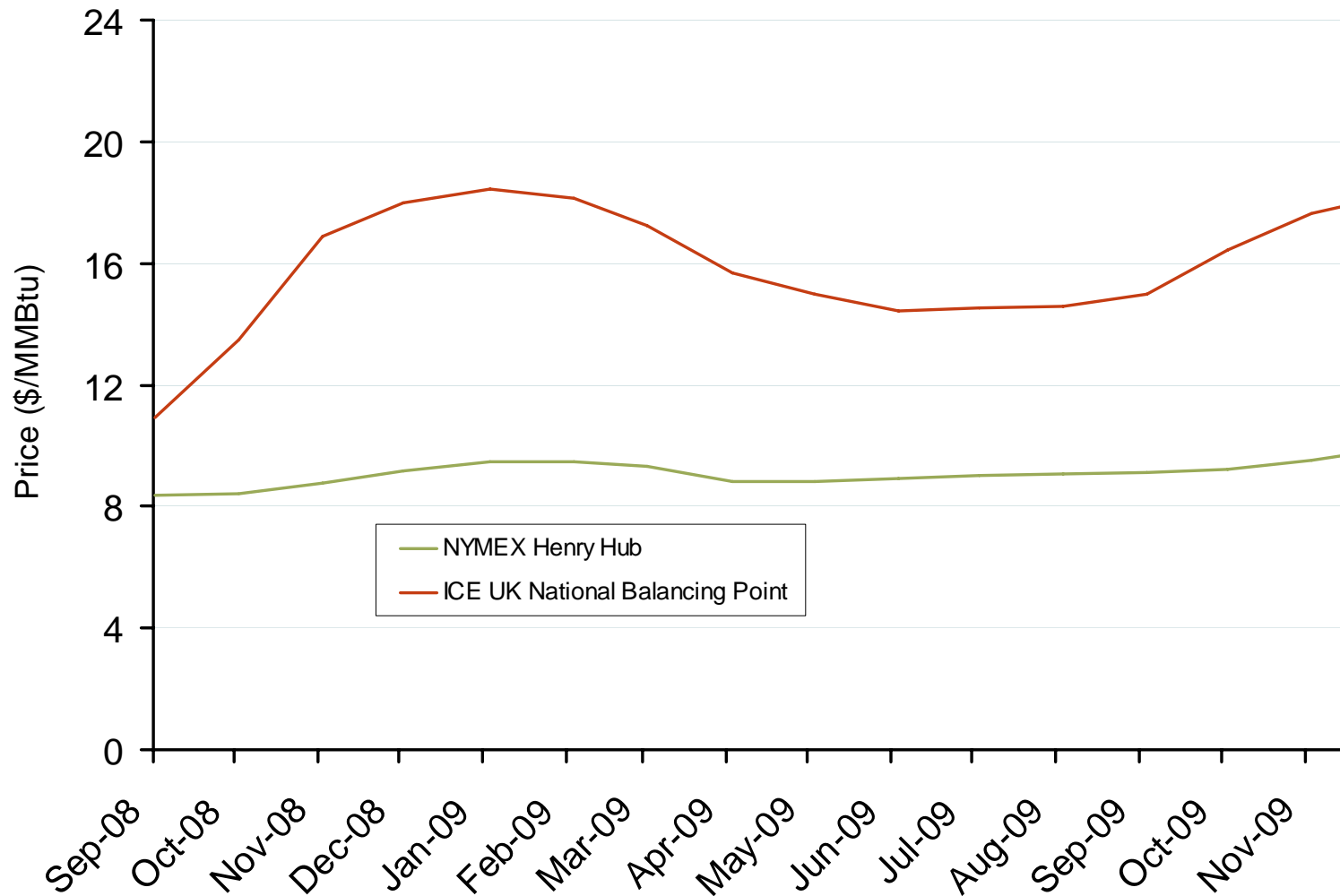
Atlantic Basin European and US Spot Natural Gas Prices



Source: Derived from *Bloomberg* and *ICE* data.

Updated August 14, 2008 3008

NYMEX Henry Hub and ICE UK National Balancing Point Natural Gas Forward Price Curves



Source: Derived from NYMEX and ICE data.

Updated August 14, 2008

3016