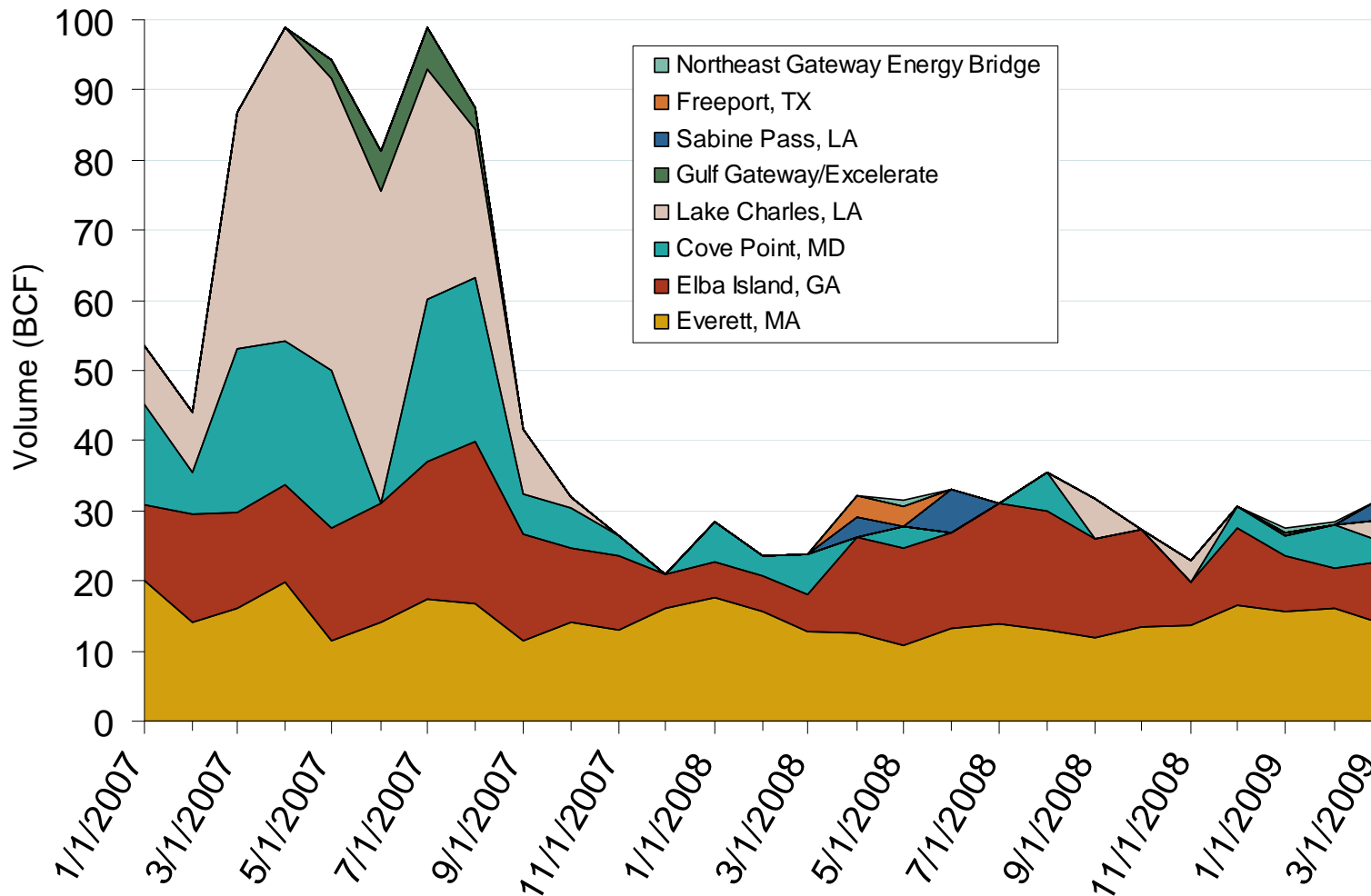


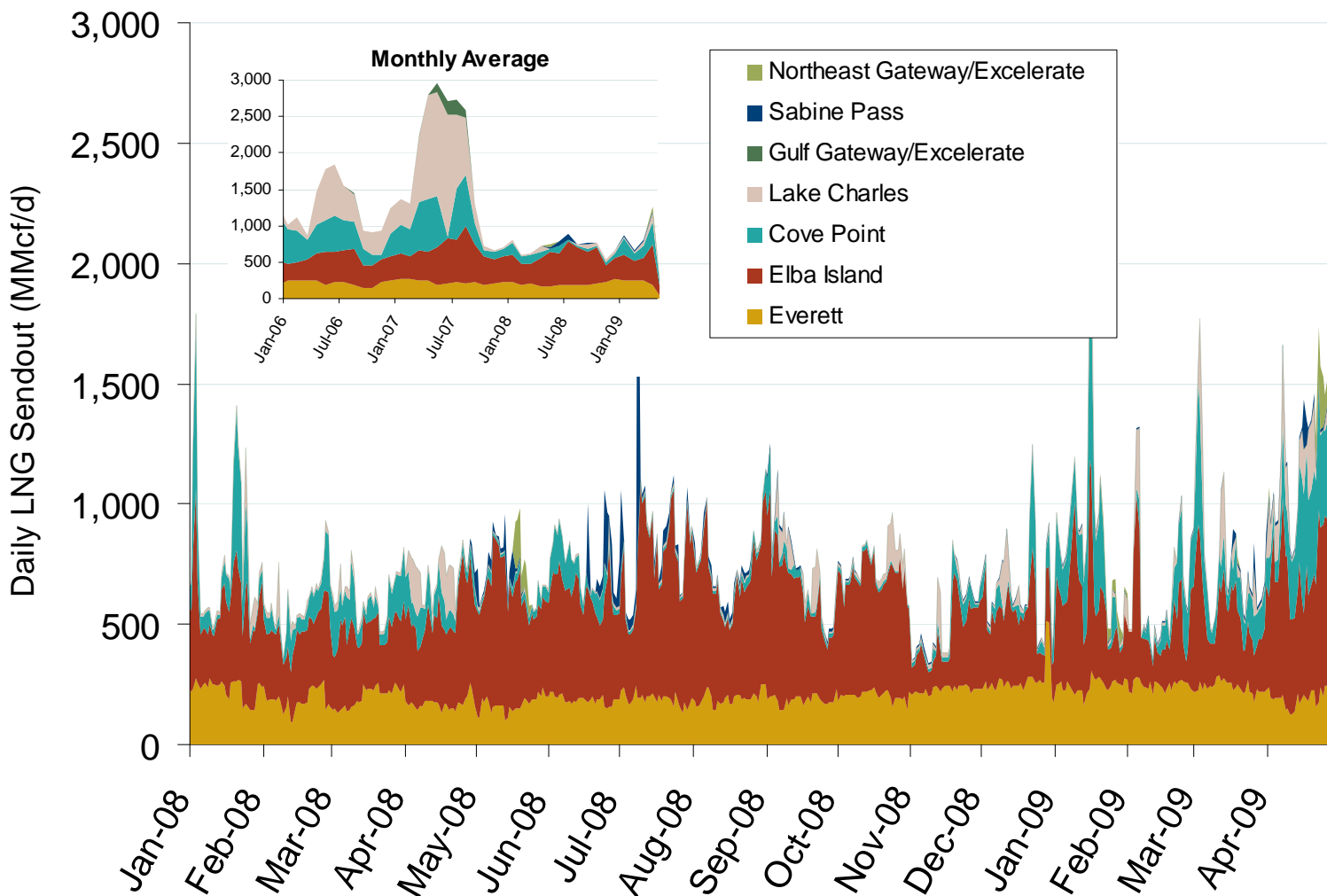
# Monthly Gas Imports at Existing U.S. LNG Facilities



Source: Derived from DOE Office of Fossil Energy data.

Updated May 7, 2009

## Daily Gas Sendout from Existing U.S. LNG Facilities



Source: Derived from *Bentek* data. Excludes Everett LNG delivered via truck and consumed by the Mystic plant as well as Freeport LNG which flows via intrastate pipelines.

Updated May 7, 2009

3007

## World LNG Estimated May 2009 Landed Prices

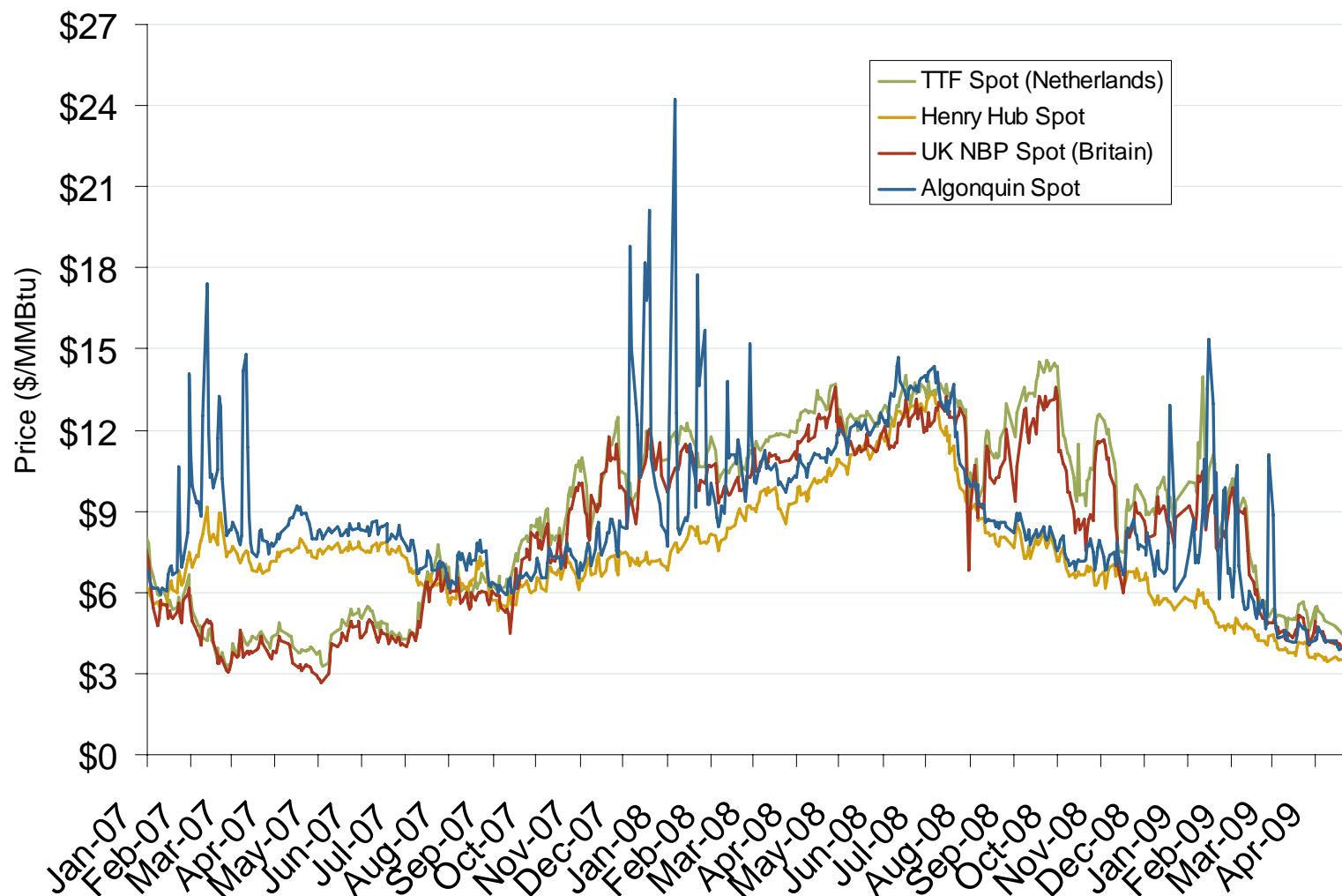


Source: *Waterborne Energy, Inc.* Data in \$US/MMBtu.

Updated May 7, 2009

3024

## Atlantic Basin European and US Spot Natural Gas Prices

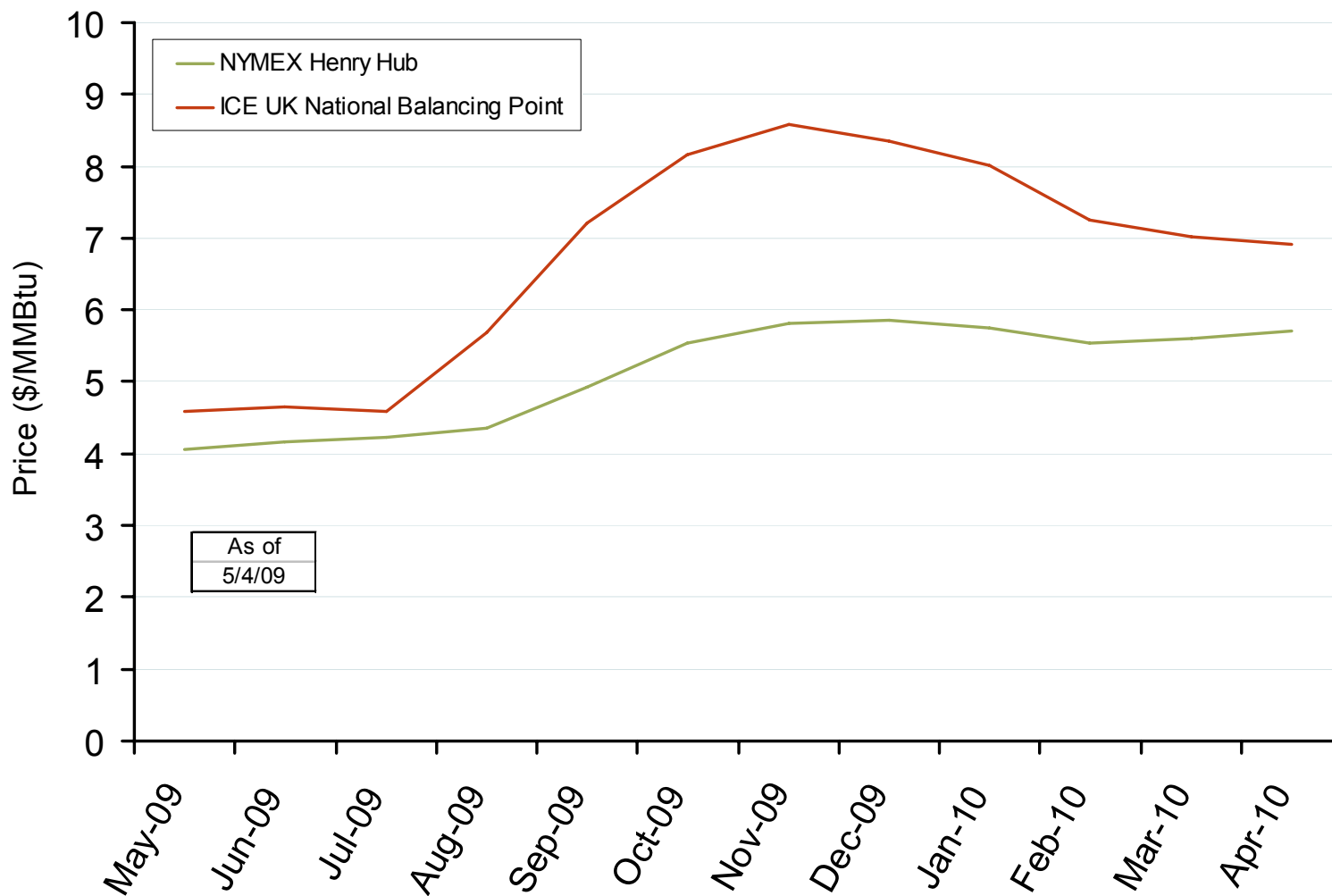


Source: Derived from *Bloomberg* and *ICE* data.

Updated May 7, 2009

3008

## Henry Hub and UK National Balancing Point Natural Gas Forward Price Curves



Source: Derived from NYMEX and ICE data.

Updated May 7, 2009

3016