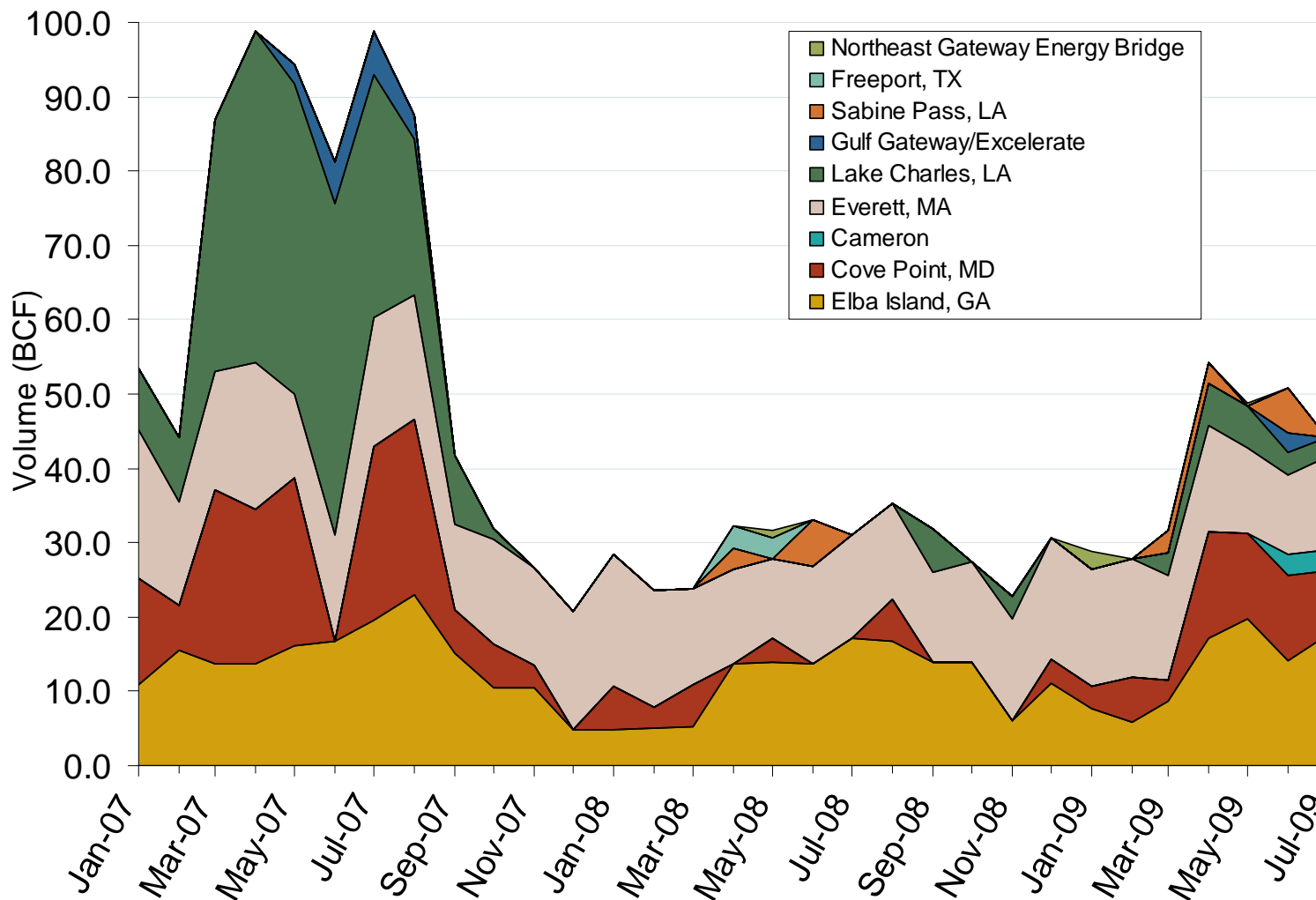


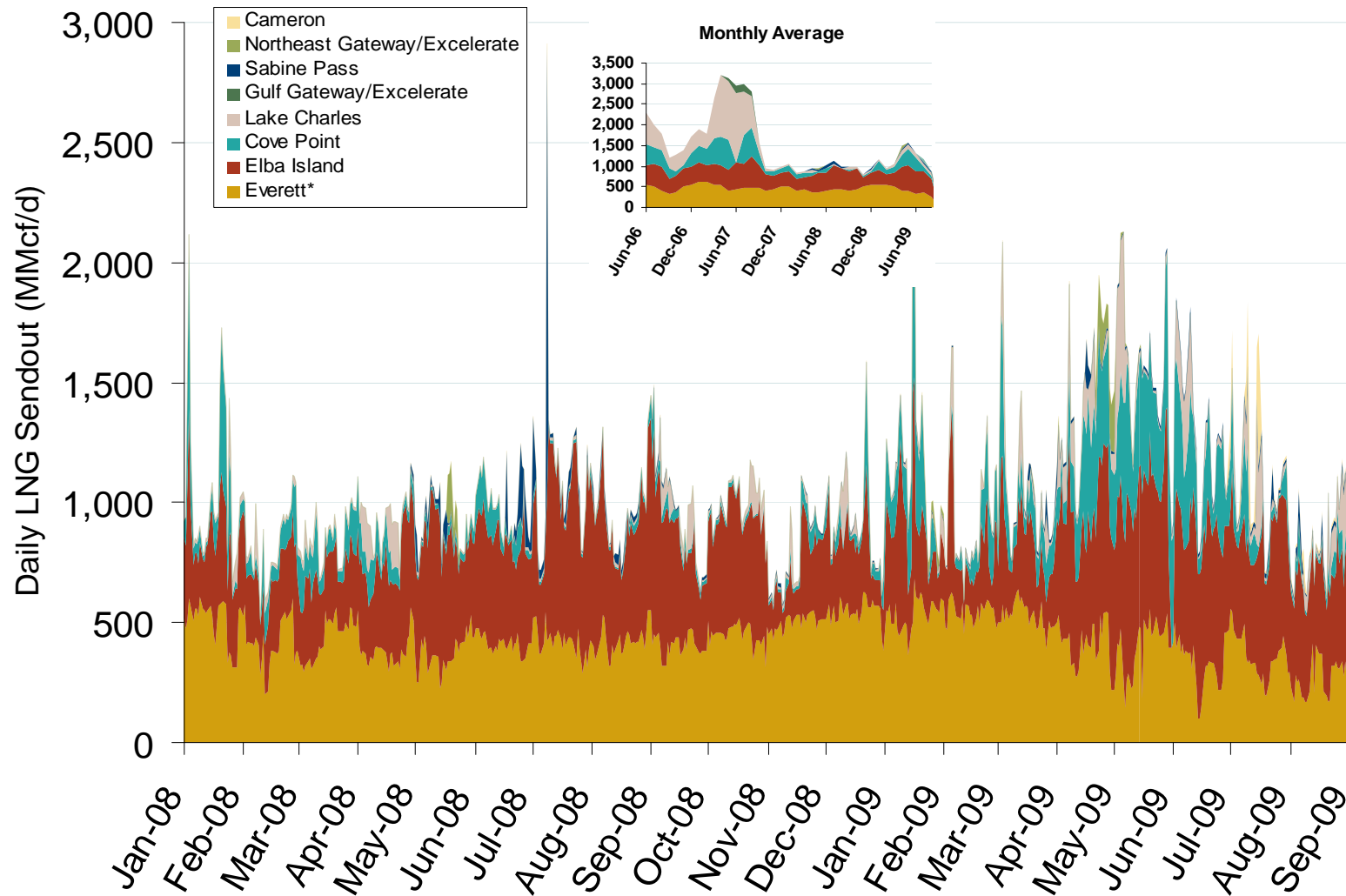
Monthly Gas Imports at Existing U.S. LNG Facilities



Source: Derived from DOE Office of Fossil Energy data.

Updated September 8, 2009

Daily Gas Sendout from Existing U.S. LNG Facilities



Source: Derived from *Bentek* data.

* Everett data includes flows onto the AGT and TGP interstate lines, plus estimates of flows to the Mystic 7 power plant, Keyspan Boston Gas, and LNG trucked out of the terminal. Excludes Freeport LNG which flows via intrastate pipelines.

Updated September 8, 2009

3007

World LNG Estimated September 2009 Landed Prices

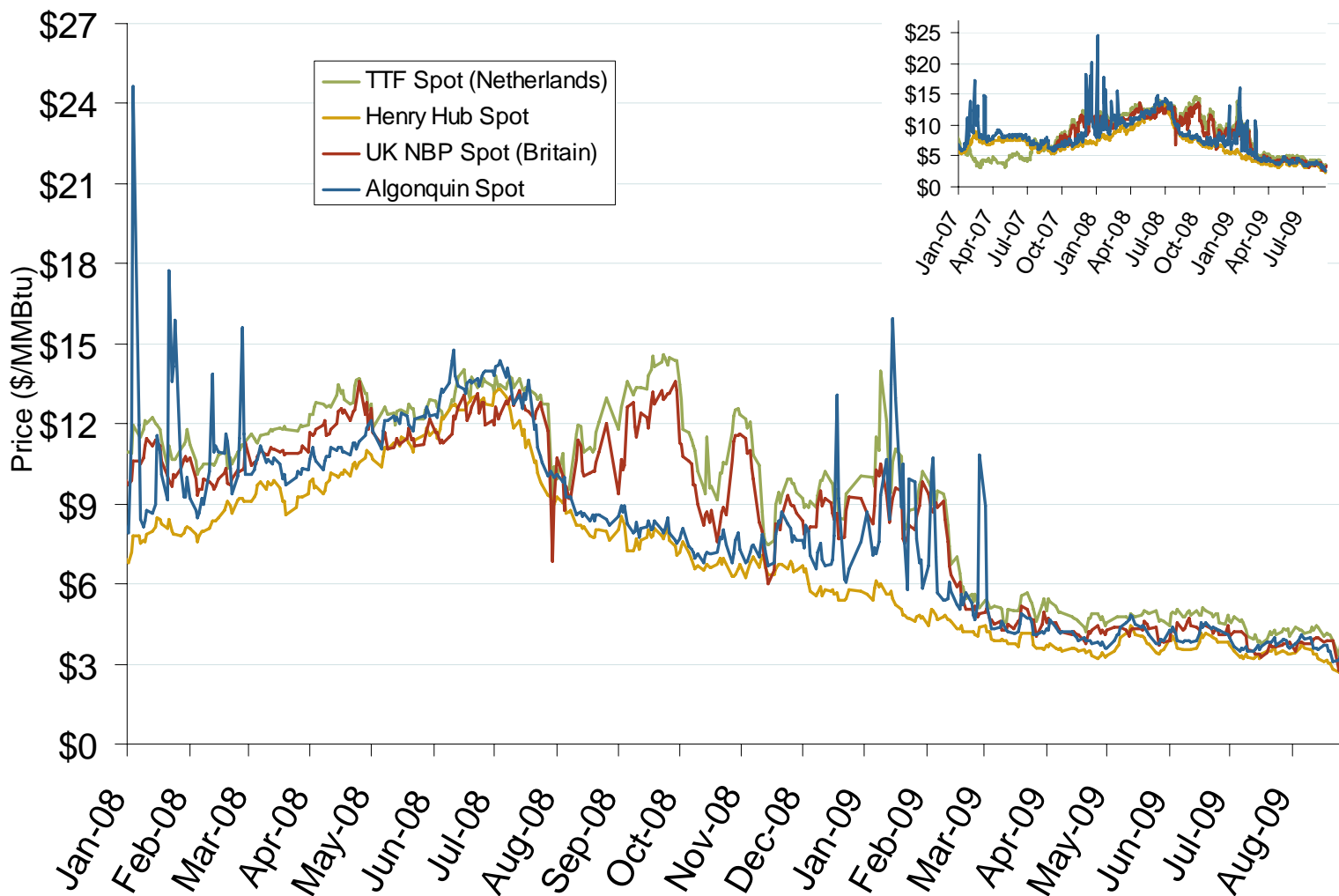


Source: *Waterborne Energy, Inc.* Data in \$US/MMBtu.

Updated September 8, 2009

3024

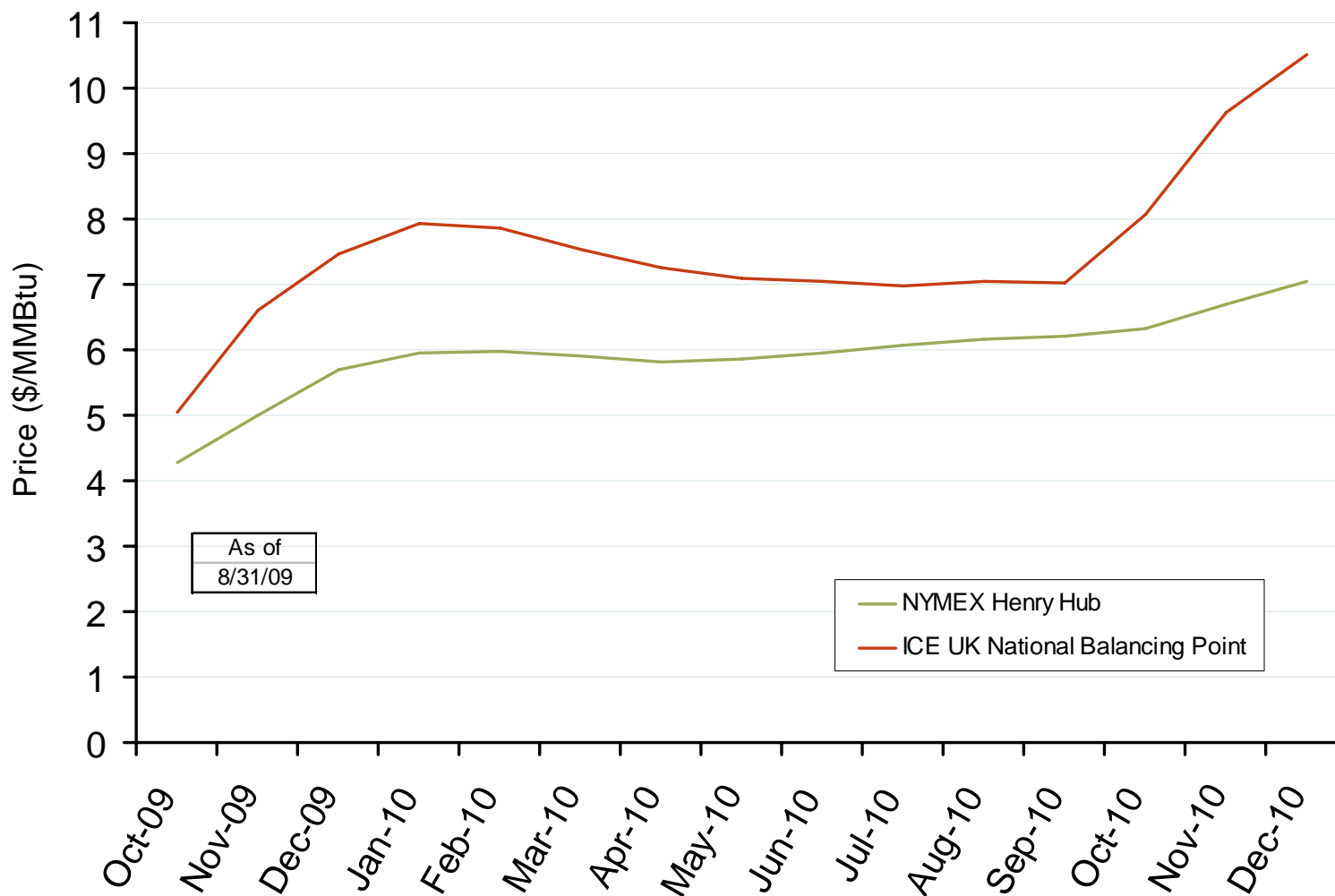
Atlantic Basin European and US Spot Natural Gas Prices



Source: Derived from Bloomberg and ICE data.

Updated September 8, 2009

Henry Hub and UK National Balancing Point Natural Gas Forward Price Curves



Source: Derived from NYMEX and ICE data.

Updated September 8, 2009

3016