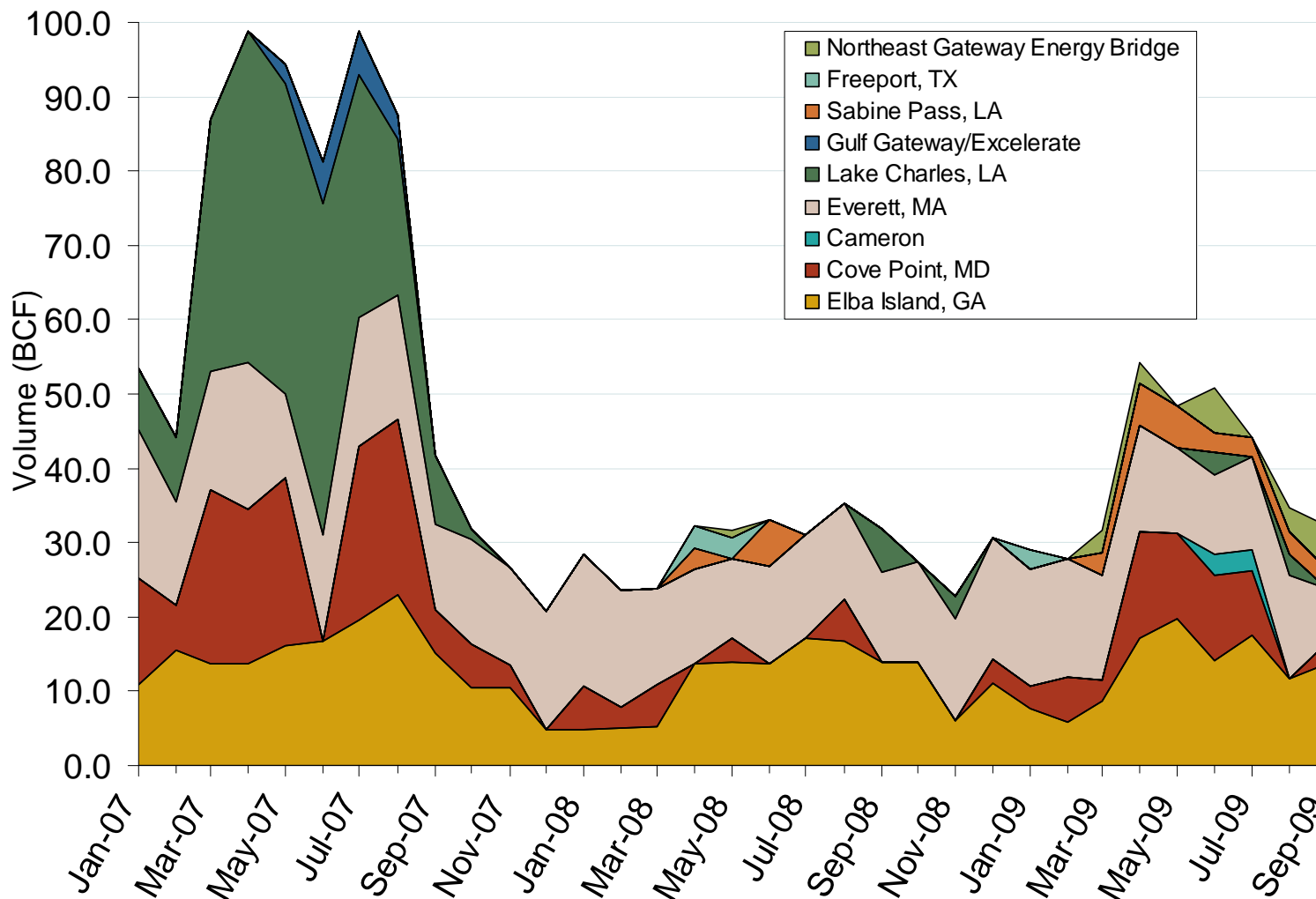


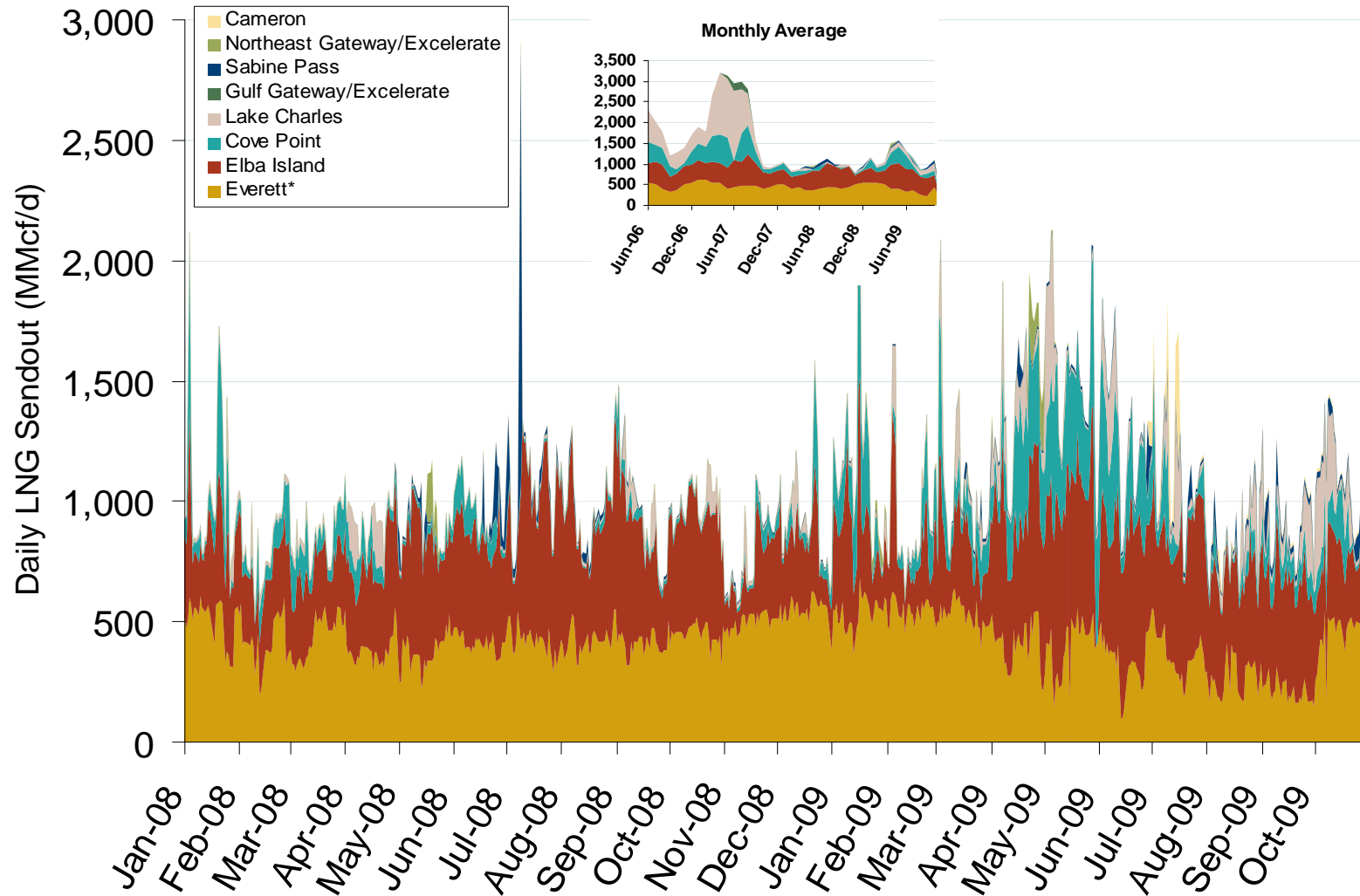
# Monthly Gas Imports at Existing U.S. LNG Facilities



Source: Derived from DOE Office of Fossil Energy data.

Updated November 6, 2009

## Daily Gas Sendout from Existing U.S. LNG Facilities



Source: Derived from *Bentek* data.

\* Everett data includes flows onto the AGT and TGP interstate lines, plus estimates of flows to the Mystic 7 power plant, Keyspan Boston Gas, and LNG trucked out of the terminal. Excludes Freeport LNG which flows via intrastate pipelines.

Updated November 6, 2009

3007

## World LNG Estimated November 2009 Landed Prices

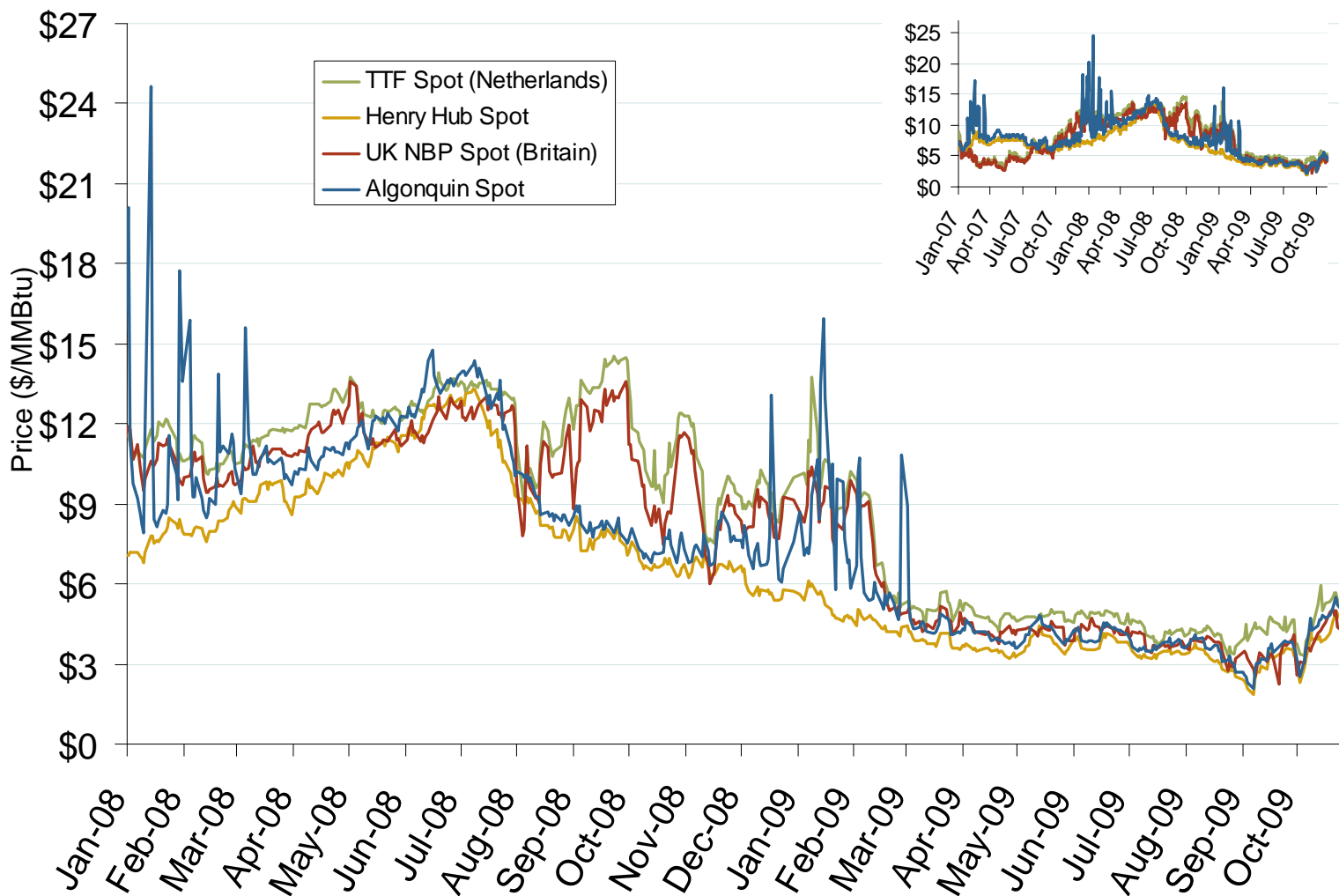


Source: *Waterborne Energy, Inc.* Data in \$US/MMBtu.

Updated November 6, 2009

3024

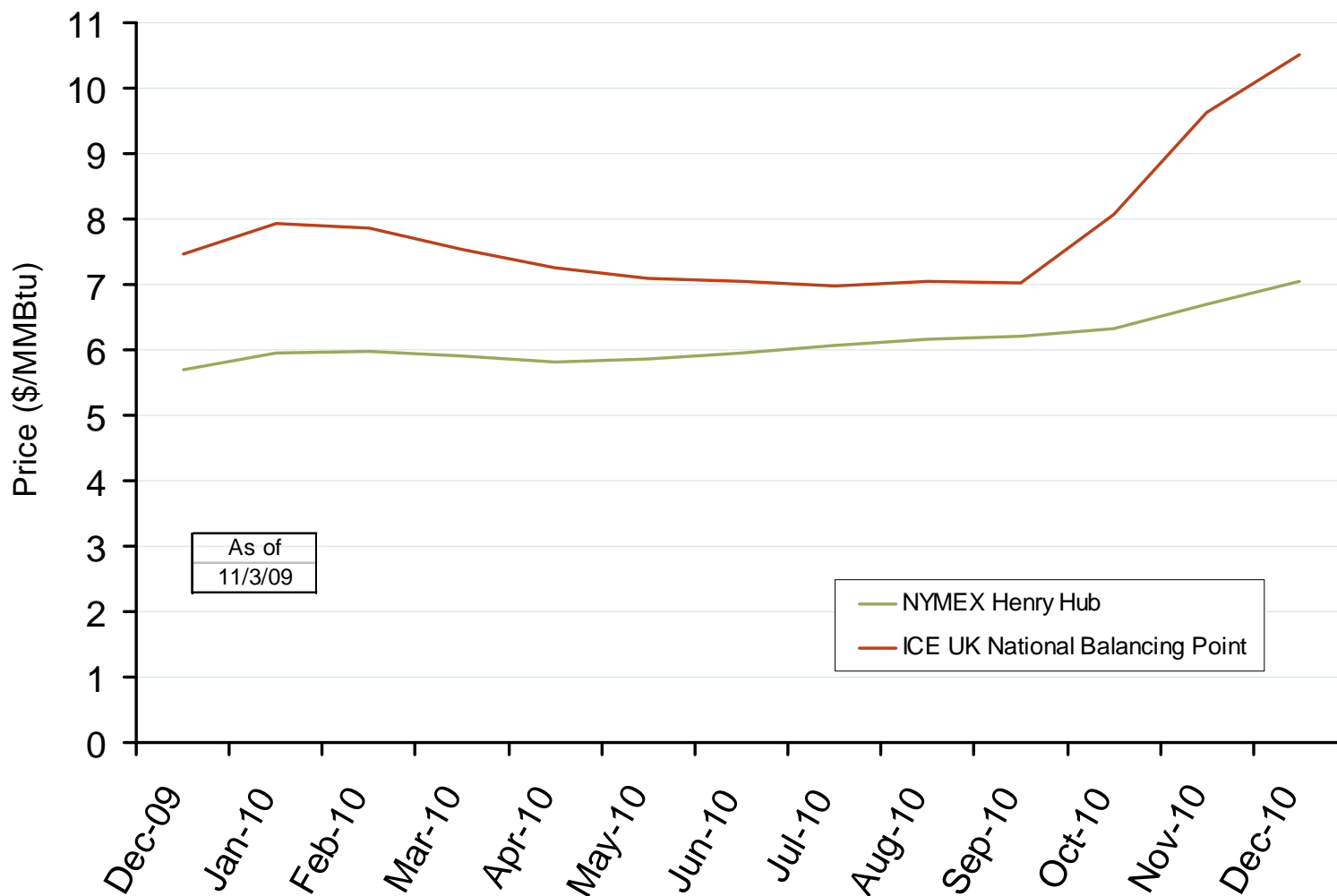
# Atlantic Basin European and US Spot Natural Gas Prices



Source: Derived from *Bloomberg* and *ICE* data.

Updated November 6, 2009

## Henry Hub and UK National Balancing Point Natural Gas Forward Price Curves



Source: Derived from NYMEX and ICE data.

Updated November 6, 2009

3016