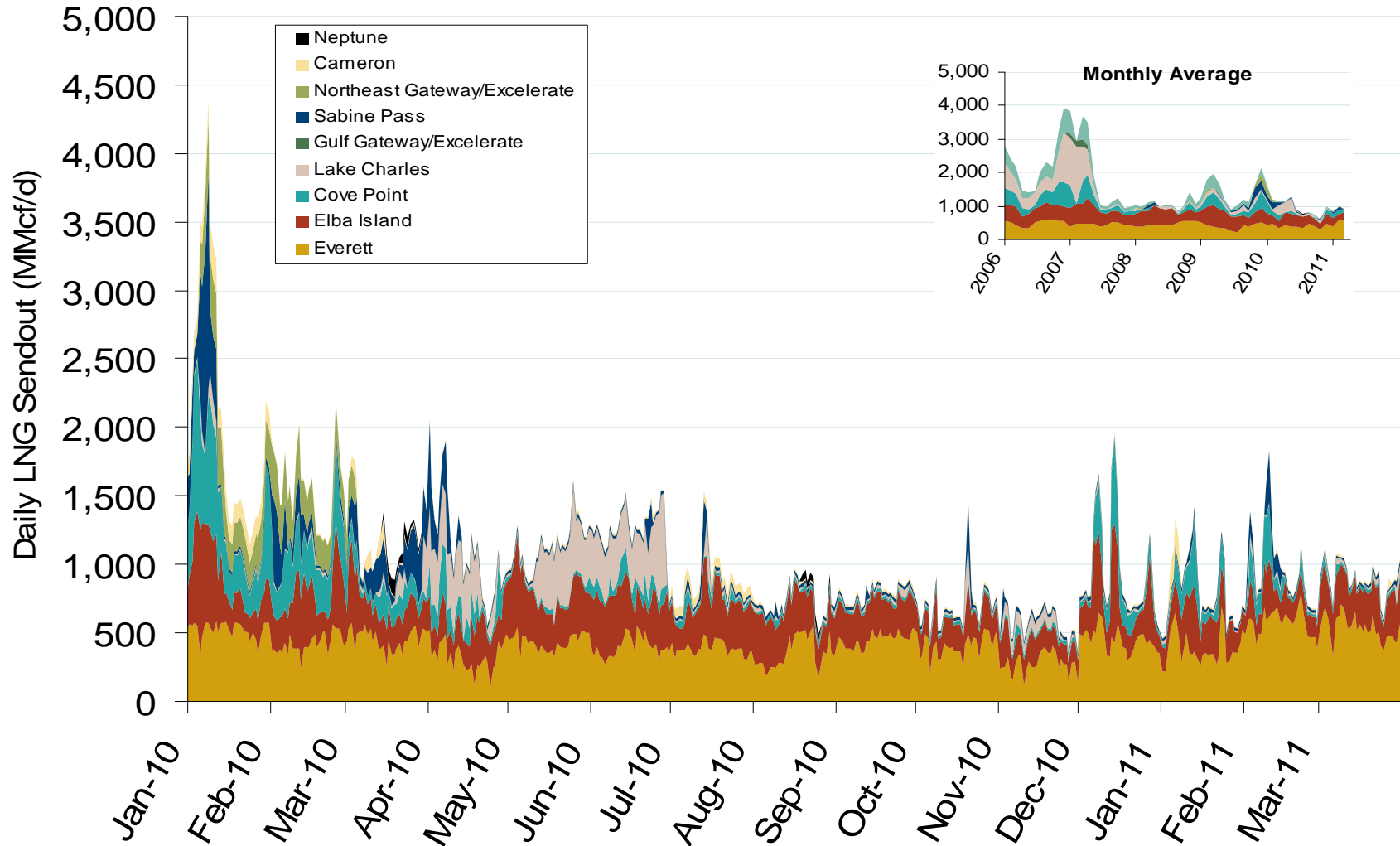


# Daily Gas Sendout from Existing U.S. LNG Facilities



Source: Derived from *Bentek* data.

\* Everett data includes flows onto the AGT and TGP interstate lines, plus estimates of flows to the Mystic 7 power plant, Keyspan Boston Gas, and LNG trucked out of the terminal. Excludes Freeport LNG which flows via intrastate pipelines.

Updated April 8, 2011

## World LNG Estimated May 2011 Landed Prices



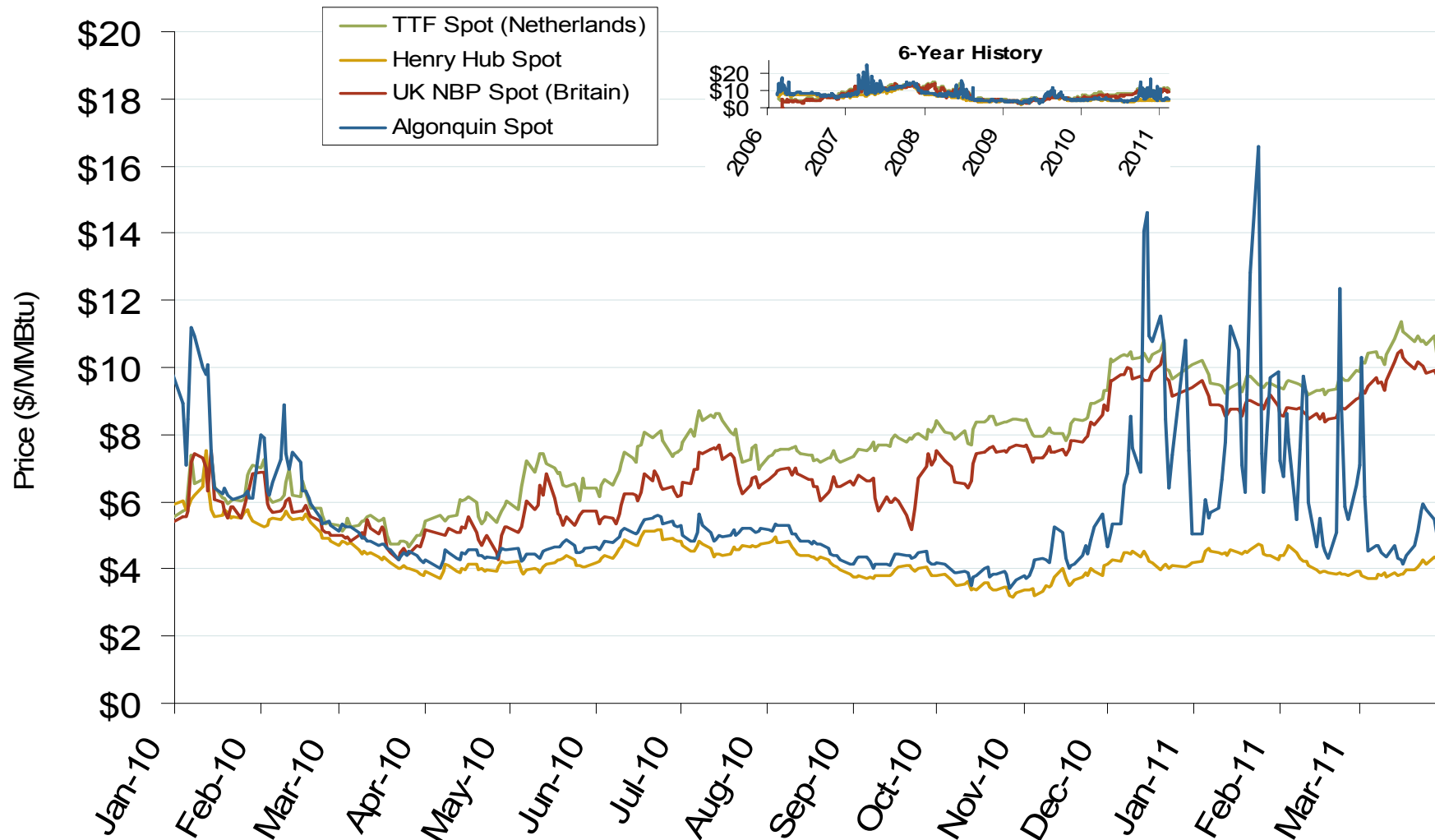
Source: *Waterborne Energy, Inc.* Data in \$US/MMBtu.

April 2011

Updated April 8, 2011

3024

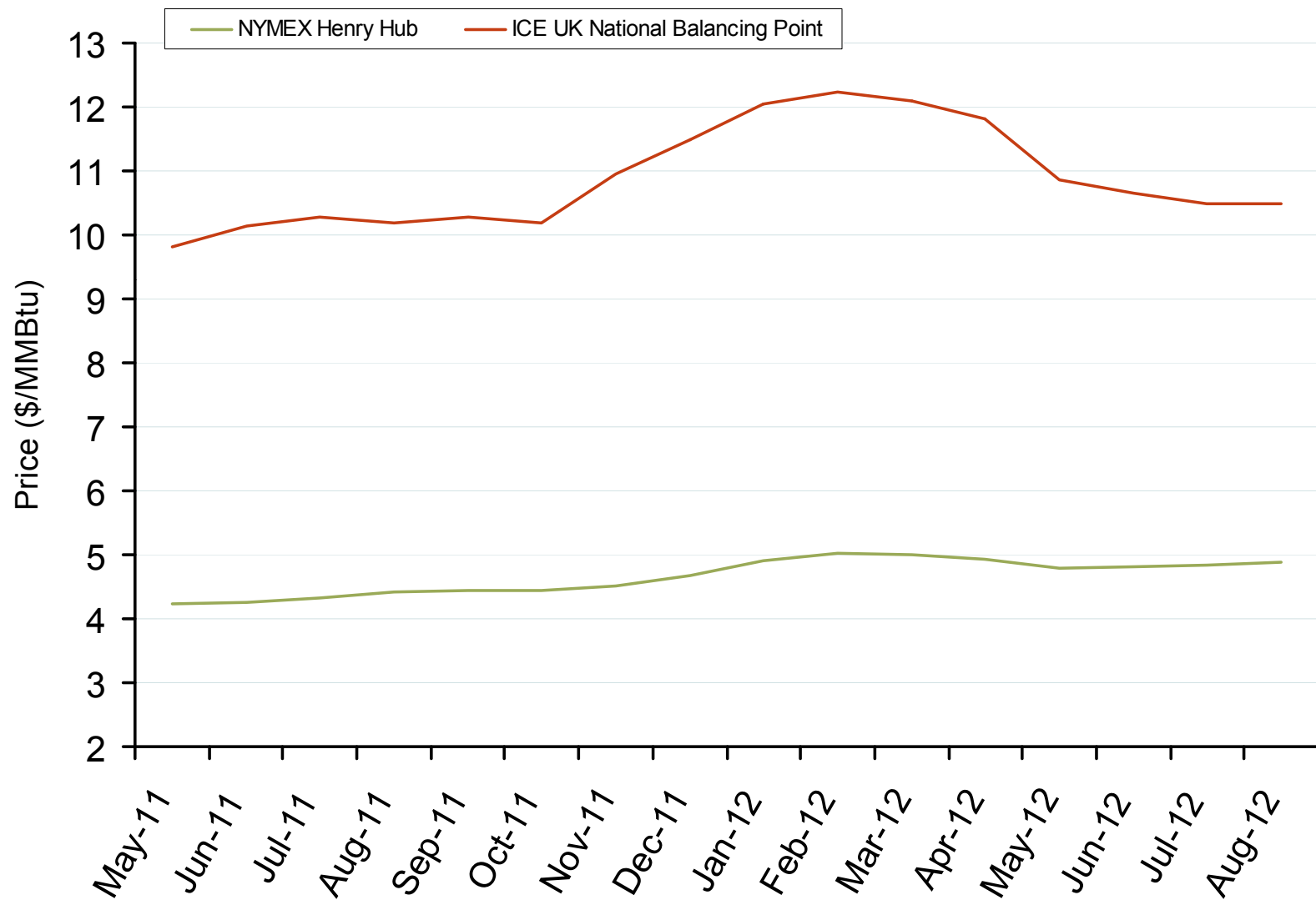
# Atlantic Basin European and US Spot Natural Gas Prices



Source: Derived from *Bloomberg and ICE data*.

Updated: April 07, 2011

# Henry Hub and UK National Balancing Point Natural Gas Forward Price Curves



Source: Derived from NYMEX and ICE data.

Updated: April 07, 2011