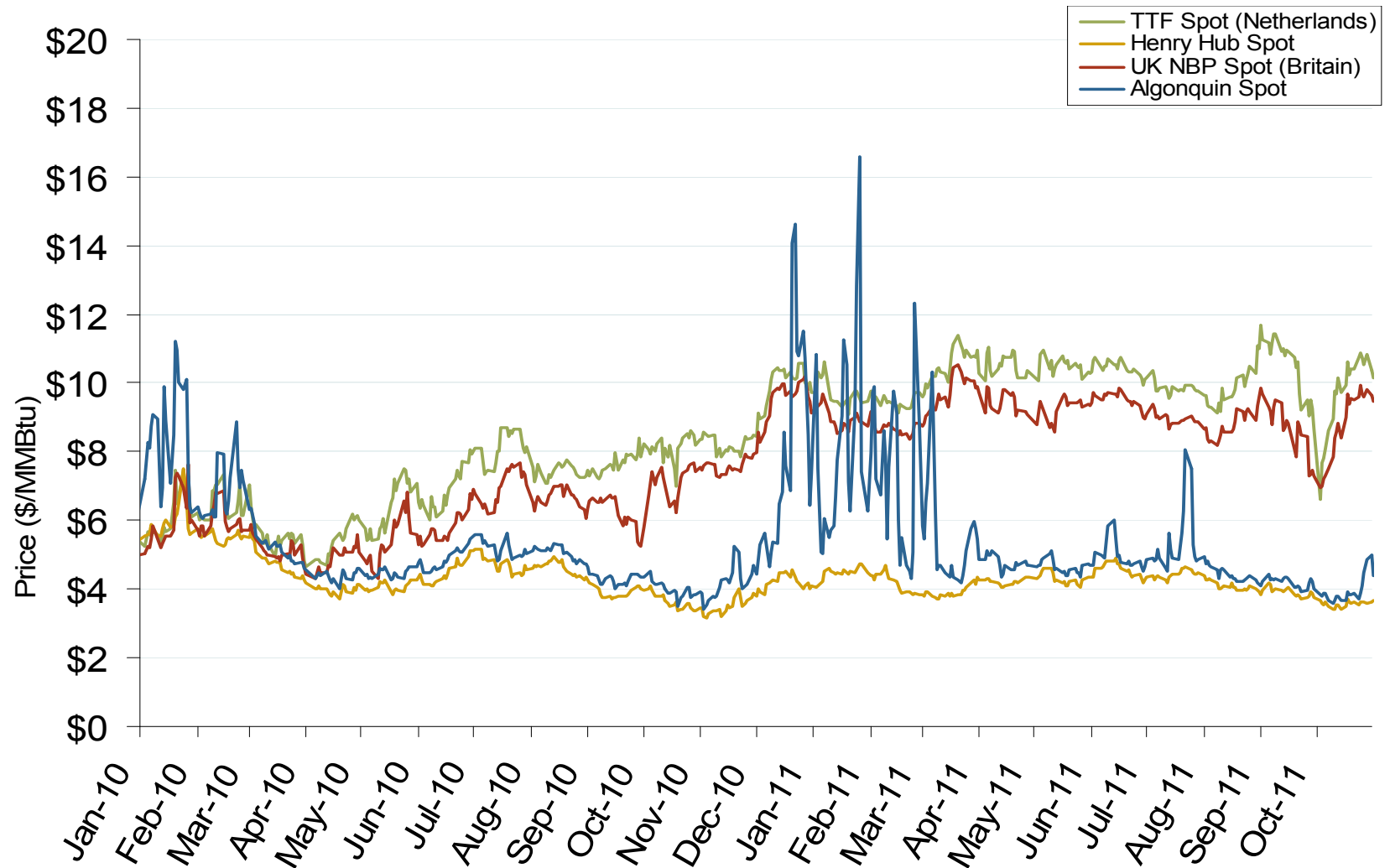


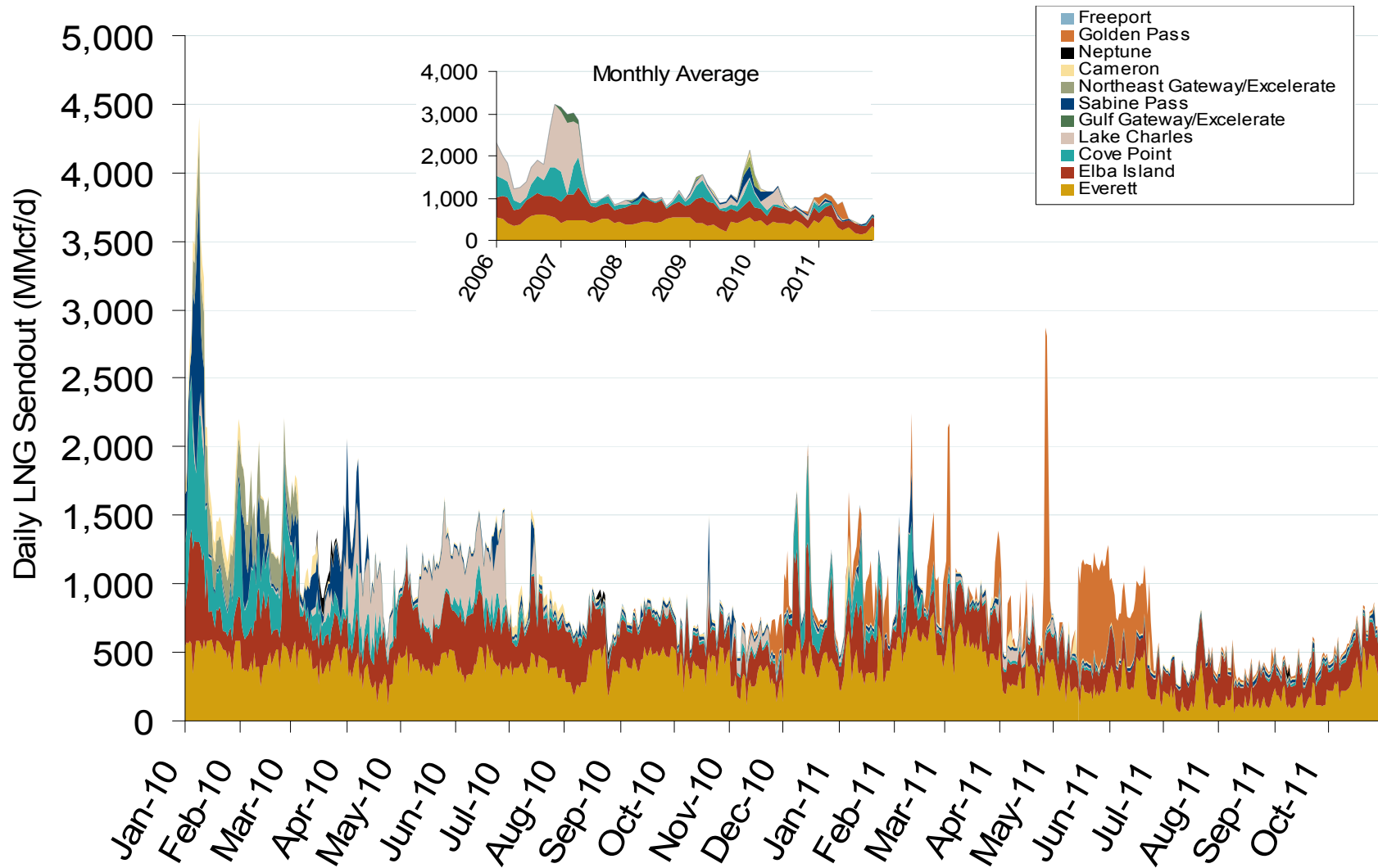
World LNG Estimated December 2011 Landed Prices



Atlantic Basin European and US Spot Natural Gas Prices



Daily Gas Sendout from Existing U.S. LNG Facilities



Notes: Everett data includes flows onto the AGT and TGP interstate lines, plus estimates of flows to the Mystic 7 power plant, Keyspan Boston Gas, and LNG trucked out of the terminal. Excludes Freeport LNG which flows via intrastate pipelines

Source: Derived from *Bentek Energy* data

Federal Energy Regulatory Commission • Market Oversight • www.ferc.gov/oversight

Monthly Gas Imports at Existing U.S. LNG Facilities

