

National Weekly Cattle And Beef Summary

Des Moines, Iowa

Mon Mar 11, 2013

USDA Livestock & Grain Market News

For Week Ending:

3/8/2013

	<u>This Week</u>	<u>Prior Week</u>	<u>Last Year</u>
LM XB463 NATIONAL COMPREHENSIVE BOXED BEEF			
CUTOUT VALUES	193.22	186.59	198.75
Primal Rib	284.87	275.13	290.42
Primal Chuck	169.13	162.14	160.92
Primal Round	168.61	160.72	168.32
Primal Loin	251.69	246.73	279.59
Primal Brisket	133.55	127.51	140.60
Primal Short Plate	134.82	131.02	143.77
Primal Flank	105.83	103.73	120.24

WEEKLY VOLUME BREAKDOWN

	<u>This Week</u>	<u>Prior Week</u>	<u>Last Year</u>
Total Loads	5856	6683	7191
Prime Loads	76	67	62
Branded Loads	854	852	958
Choice Loads	1639	1840	2097
Select Loads	1018	1117	1088
Ungraded Loads (cuts, trims, grinds)	2269	2807	2987

TYPE OF SALES

	<u>This Week</u>	<u>Prior Week</u>	<u>Last Year</u>
Negotiated Sales 0-21 Day	2050	2482	2621
Negotiated Sales 21+ Day	641	858	1029
Formula Sales	3100	3273	3421
Forward Contract Sales	65	69	120
Domestic Sales	5134	5847	6276
NAFTA Exports	142	161	155
Overseas Exports	580	675	760

LM CT150 5 AREA WEEKLY WEIGHTED CATTLE PRICE

	<u>This Week</u>	<u>Prior Week</u>	<u>Last Year</u>
Live Steer	127.72	127.82	126.70
Live Heifer	127.83	127.75	126.81
Dressed Steer	203.15	203.25	201.82
Dressed Heifer	203.04	203.29	201.57

NW LS441 USDA BY-PRODUCT DROP VALUE (STEER)

	<u>This Week</u>	<u>Prior Week</u>	<u>Last Year</u>
WEEKLY USDA BY-PRODUCT DROP VALUE (STEER)	13.92	13.97	13.52

SJ LS712 WEEKLY ESTIMATED BEEF PRODUCTION

	<u>(Estimate)</u>	<u>(Estimate)</u>	<u>(Actual)</u>
3/8/2013			
Slaughter	595,000	563,000	632,000
Live Weights	1324	1325	1309
Dressed Weights	800	802	791
Beef Production (mil lbs)	474.9	450.4	498.9

NW LS196 WEEKLY STEER HEIFER GRADING REPORT

For Week Ending:

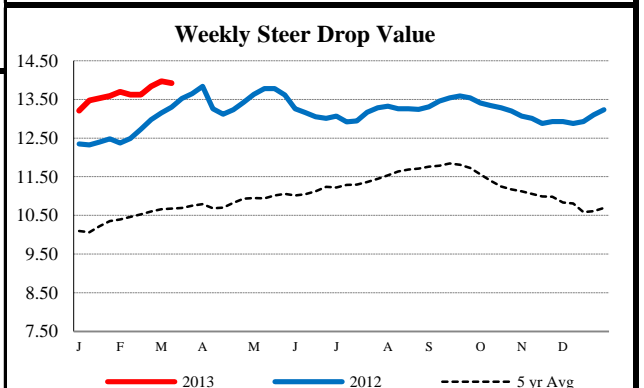
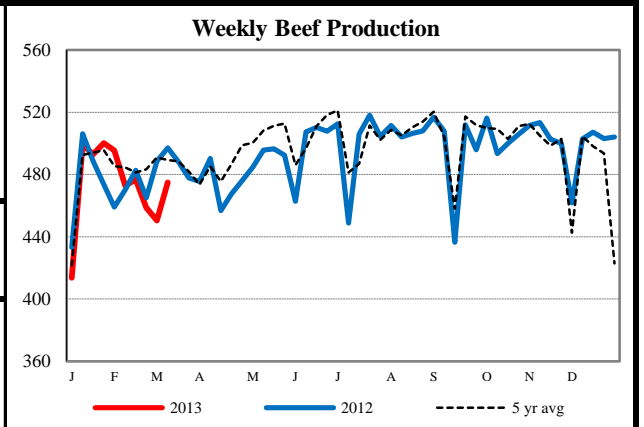
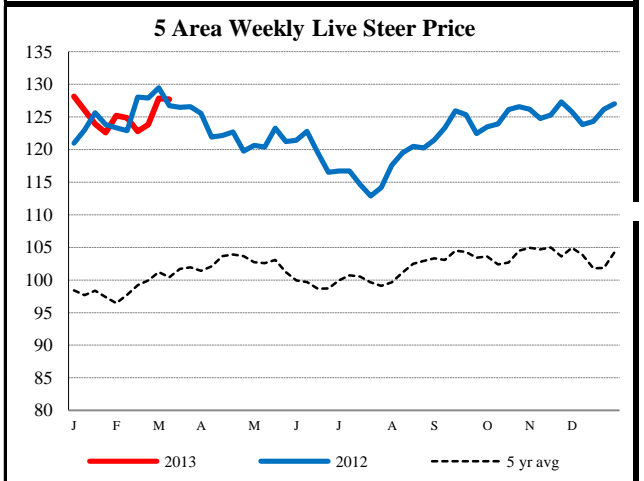
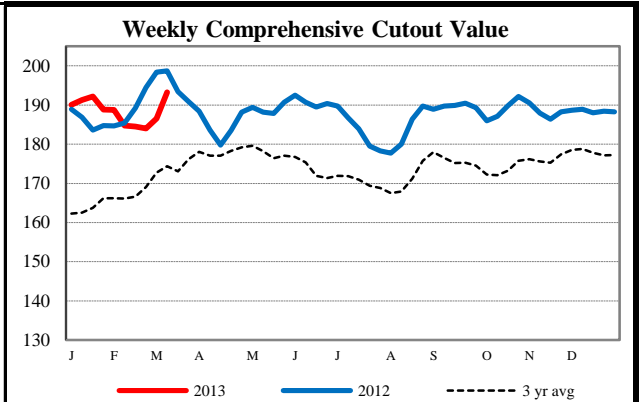
Mar 01, 2013

Total Quality and Yield Grades for All Regions

	<u>This Week</u>	<u>Prior Week</u>	<u>Last Year</u>
Prime	4.38%	3.95%	3.45%
Choice	64.59%	64.42%	65.75%
Select	24.89%	25.53%	25.45%

Grading by State

	<u>Nebraska</u>	<u>Kansas</u>	<u>Texas</u>
Prime	4.68%	2.62	1.23%
Choice	68.87%	64.63	55.52%
Select	16.72%	29.83	38.57%
Other	9.72%	2.92	4.69%



USDA Livestock & Grain Market News

Des Moines, Iowa

Phone: 515-284-4460

Email: desm.lgmn@usda.gov

www.ams.usda.gov/LSMarketNews