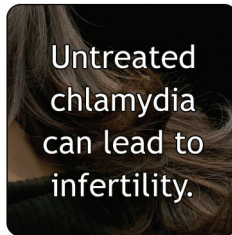


Chlamydia – CDC Fact Sheet



What is chlamydia?

Chlamydia is a common sexually transmitted disease (STD) caused by the bacterium, *Chlamydia trachomatis*, which can damage a woman's reproductive organs. Even though symptoms of chlamydia are usually mild or absent, serious complications that cause irreversible damage, including infertility, can occur "silently" before a woman ever recognizes a problem. Chlamydia also can cause discharge from the penis of an infected man.



How common is chlamydia?

Chlamydia is the most frequently reported bacterial sexually transmitted disease in the United States. In 2010, 1,307,893 chlamydial infections were reported to CDC from 50 states and the District of Columbia. Under-reporting is substantial because most people with chlamydia are not aware of their infections and do not seek testing. Also, testing is not often done if patients are treated for their symptoms. An estimated 2.8 million infections occur annually in the U.S. Women are frequently re-infected if their sex partners are not treated.

How do people get chlamydia?

Chlamydia can be transmitted during vaginal, anal, or oral sex. Chlamydia can also be passed from an infected mother to her baby during vaginal childbirth.

Any sexually active person can be infected with chlamydia. The greater the number of sex partners, the greater the risk of infection. Because the cervix (opening to the uterus) of teenage girls and young women is not fully matured and is probably more susceptible to infection, they are at particularly high risk for infection if sexually active. Since chlamydia can be transmitted by oral or anal sex, men who have sex with men are also at risk for chlamydial infection.

What are the symptoms of chlamydia?

Chlamydia is known as a "silent" disease because the majority of infected people have no symptoms. If symptoms do occur, they usually appear within 1 to 3 weeks after exposure.

In women, the bacteria initially infect the cervix and the urethra (urine canal). Women who have symptoms might have an abnormal vaginal discharge or a burning sensation when urinating. If the infection spreads from the cervix to the fallopian tubes (tubes that carry fertilized eggs from the ovaries to the uterus), some women still have no signs or symptoms; others have lower abdominal pain, low back pain, nausea, fever, pain during intercourse, or bleeding between menstrual periods. Chlamydial infection of the cervix can spread to the rectum.

Men with signs or symptoms might have a discharge from their penis or a burning sensation when urinating. Men might also have burning and itching around the opening of the penis. Pain and swelling in the testicles are uncommon.

Men or women who have receptive anal intercourse may acquire chlamydial infection in the rectum, which can cause rectal pain, discharge, or bleeding. Chlamydia can also be found in the throats of women and men having oral sex with an infected partner.

What complications can result from untreated chlamydia?

If untreated, chlamydial infections can progress to serious reproductive and other health problems with both short-term and long-term consequences. Like the disease itself, the damage that chlamydia causes is often "silent."

In women, untreated infection can spread into the uterus or fallopian tubes and cause pelvic inflammatory disease (PID). This happens in about 10 to 15 percent of women with untreated chlamydia. Chlamydia can also cause fallopian tube infection without any symptoms. PID and "silent" infection in the upper genital tract can cause permanent damage to the fallopian tubes, uterus, and surrounding tissues. The damage can lead to chronic pelvic pain, infertility, and potentially fatal ectopic pregnancy (pregnancy outside the uterus). Chlamydia may also increase the chances of becoming infected with HIV, if exposed.

To help prevent the serious consequences of chlamydia, screening at least annually for chlamydia is recommended for all sexually active women age 25 years and younger. An annual screening test also is recommended for older women with risk factors for chlamydia (a new sex partner or multiple sex partners). All pregnant women should have a screening test for chlamydia.

National Center for HIV/AIDS, Viral Hepatitis, STD, and TB Prevention
Division of STD Prevention



CS226060A

Complications among men are rare. Infection sometimes spreads to the epididymis (the tube that carries sperm from the testis), causing pain, fever, and, rarely, sterility.

Rarely, genital chlamydial infection can cause arthritis that can be accompanied by skin lesions and inflammation of the eye and urethra (Reiter's syndrome).

How does chlamydia affect a pregnant woman and her baby?

In pregnant women, there is some evidence that untreated chlamydial infections can lead to premature delivery. Babies who are born to infected mothers can get chlamydial infections in their eyes and respiratory tracts. Chlamydia is a leading cause of early infant pneumonia and conjunctivitis (pink eye) in newborns.

How is chlamydia diagnosed?

There are laboratory tests to diagnose chlamydia. Some can be performed on urine, other tests require that a specimen be collected from a site such as the penis or cervix.

What is the treatment for chlamydia?

Chlamydia can be easily treated and cured with antibiotics. A single dose of azithromycin or a week of doxycycline (twice daily) are the most commonly used treatments. HIV-positive persons with chlamydia should receive the same treatment as those who are HIV negative.

All sex partners should be evaluated, tested, and treated. Persons with chlamydia should abstain from sexual intercourse for 7 days after single dose antibiotics or until completion of a 7-day course of antibiotics, to prevent spreading the infection to partners.

Women whose sex partners have not been appropriately treated are at high risk for re-infection. Having multiple infections increases a woman's risk of serious reproductive health complications, including infertility. Women and men with chlamydia should be retested about three months after treatment of an initial infection, regardless of whether they believe that their sex partners were treated.

How can chlamydia be prevented?

The surest way to avoid transmission of STDs is to abstain from sexual contact, or to be in a long-term mutually monogamous relationship with a partner who has been tested and is known to be uninfected.

Latex male condoms, when used consistently and correctly, can reduce the risk of transmission of chlamydia.

CDC recommends yearly chlamydia testing of all sexually active women age 25 or younger, older women with risk factors for chlamydial infections (those who have a new sex partner or multiple sex partners), and all pregnant women. An appropriate sexual risk assessment by a health care provider should always be conducted and may indicate more frequent screening for some women.

Any genital symptoms such as an unusual sore, discharge with odor, burning during urination, or bleeding between menstrual cycles could mean an STD infection. If a woman or man has any of these symptoms, they should stop having sex and consult a health care provider immediately. Treating STDs early in women can prevent PID. Women and men who are told they have an STD and are treated for it should notify all of their recent sex partners (sex partners within the preceding 60 days) so they can see a health care provider and be evaluated for STDs. Sexual activity should not resume until all sex partners have been examined and, if necessary, treated.

Where can I get more information?

Division of STD Prevention (DSTDP)
Centers for Disease Control and Prevention
Email: www.cdc.gov/std

CDC-INFO Contact Center
1-800-CDC-INFO (1-800-232-4636)
Email: cdcinfo@cdc.gov

If untreated, chlamydial infections can progress to serious reproductive and other health problems with both short-term and long-term consequences. Like the disease itself, the damage that chlamydia causes is often "silent."

