

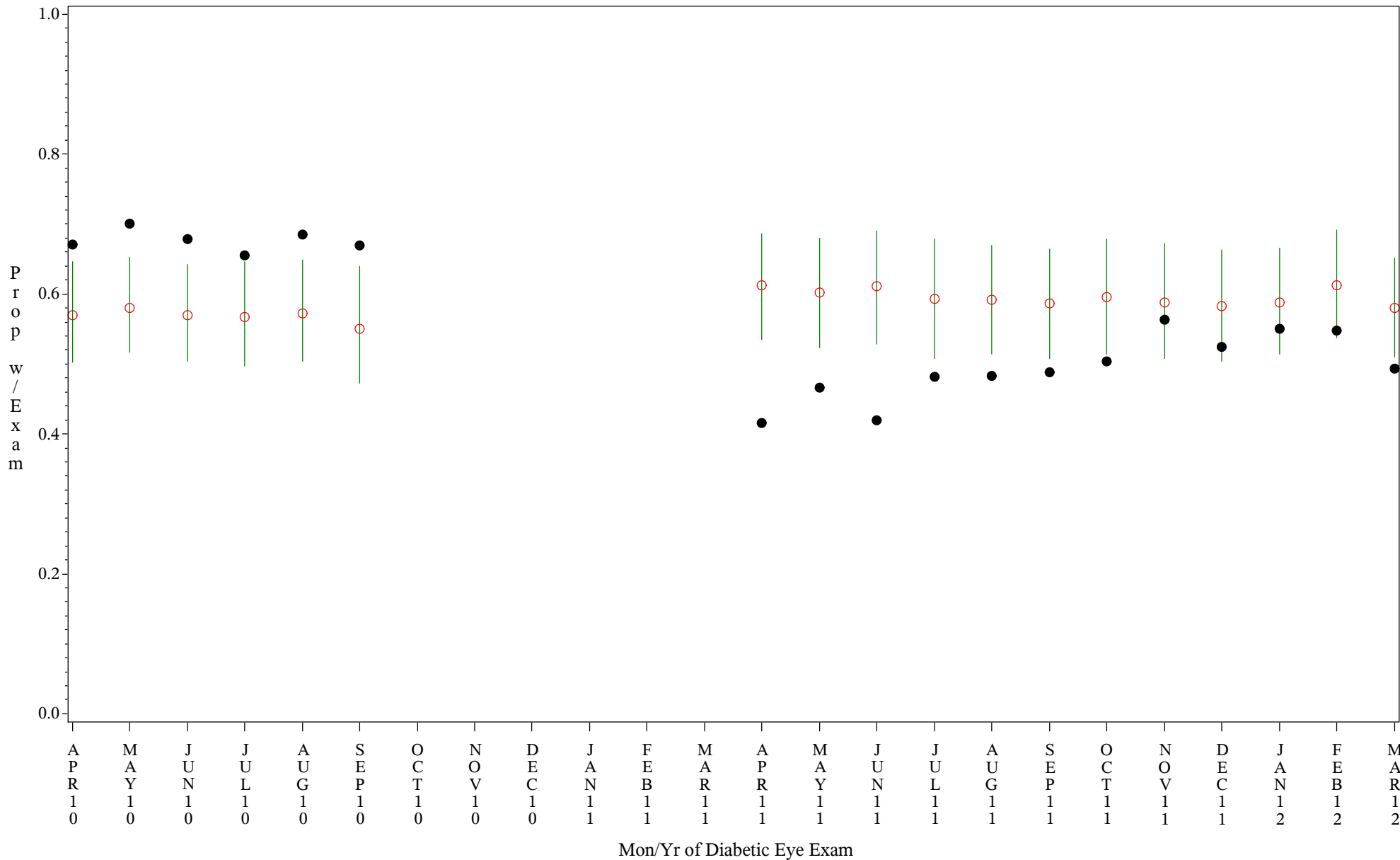
Comp Chrt for Early Diagnosis of Diabetic Retinopathy (#5090)

Time Period: Apr 2010 - Mar 2012

Denominator=All Diabetic Patients, Numerator=Diabetic Eye Exam

Chart created: Wednesday, 25JUL2012

hospital=Sells - Tucson



PLOT ● Organization's Observed Rate ○ Expected Rate-Comparison Group

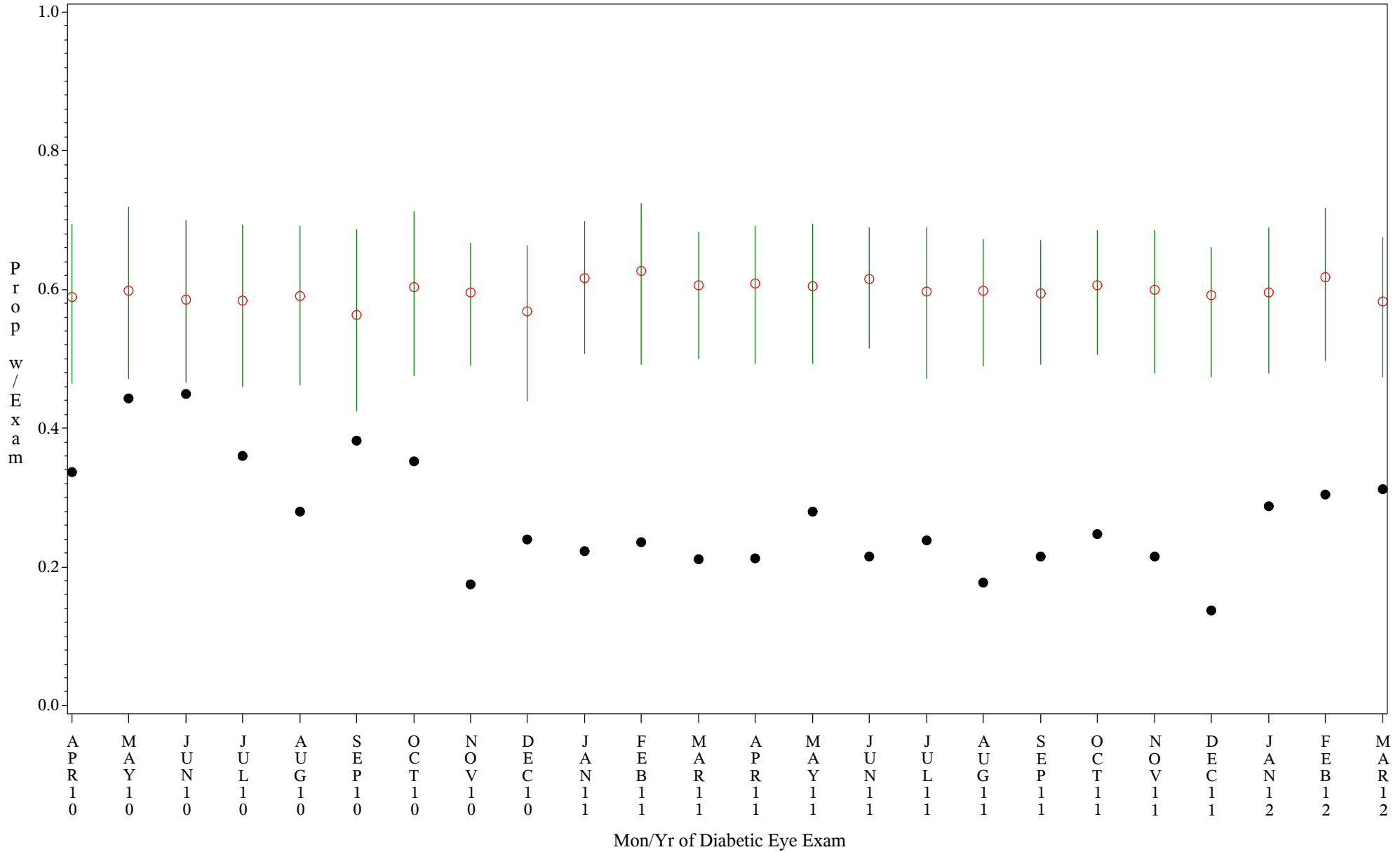
Comp Chrt for Early Diagnosis of Diabetic Retinopathy (#5090)

Time Period: Apr 2010 - Mar 2012

Denominator=All Diabetic Patients, Numerator=Diabetic Eye Exam

Chart created: Wednesday, 25JUL2012

hospital=Ft. Yates - Aberdeen



PLOT ● Organization's Observed Rate ○ Expected Rate-Comparison Group

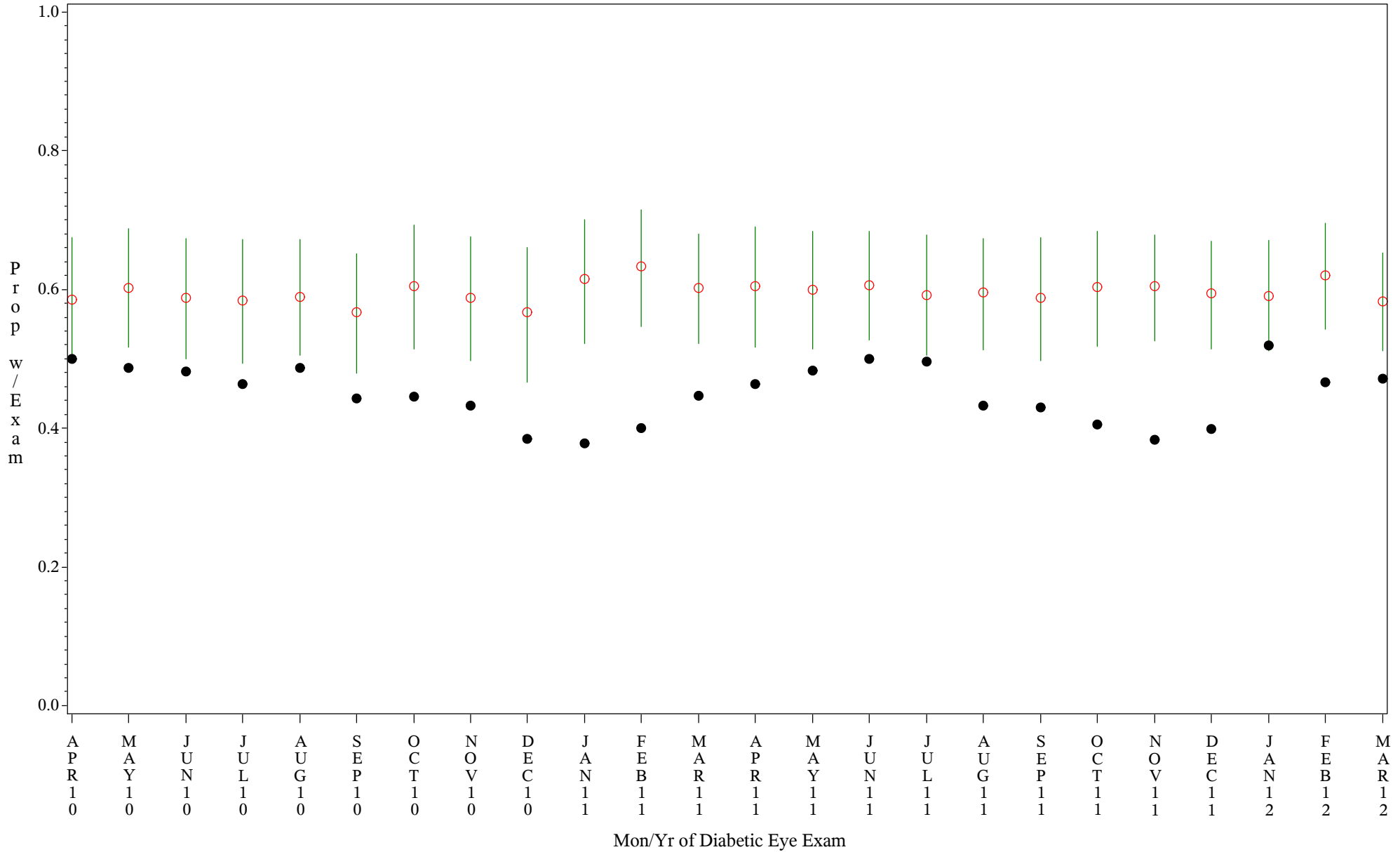
Comp Chrt for Early Diagnosis of Diabetic Retinopathy (#5090)

Time Period: Apr 2010 - Mar 2012

Denominator=All Diabetic Patients, Numerator=Diabetic Eye Exam

Chart created: Wednesday, 25JUL2012

hospital=Quentin N Burdick - Aberdeen



PLOT ● Organization's Observed Rate ○ Expected Rate-Comparison Group

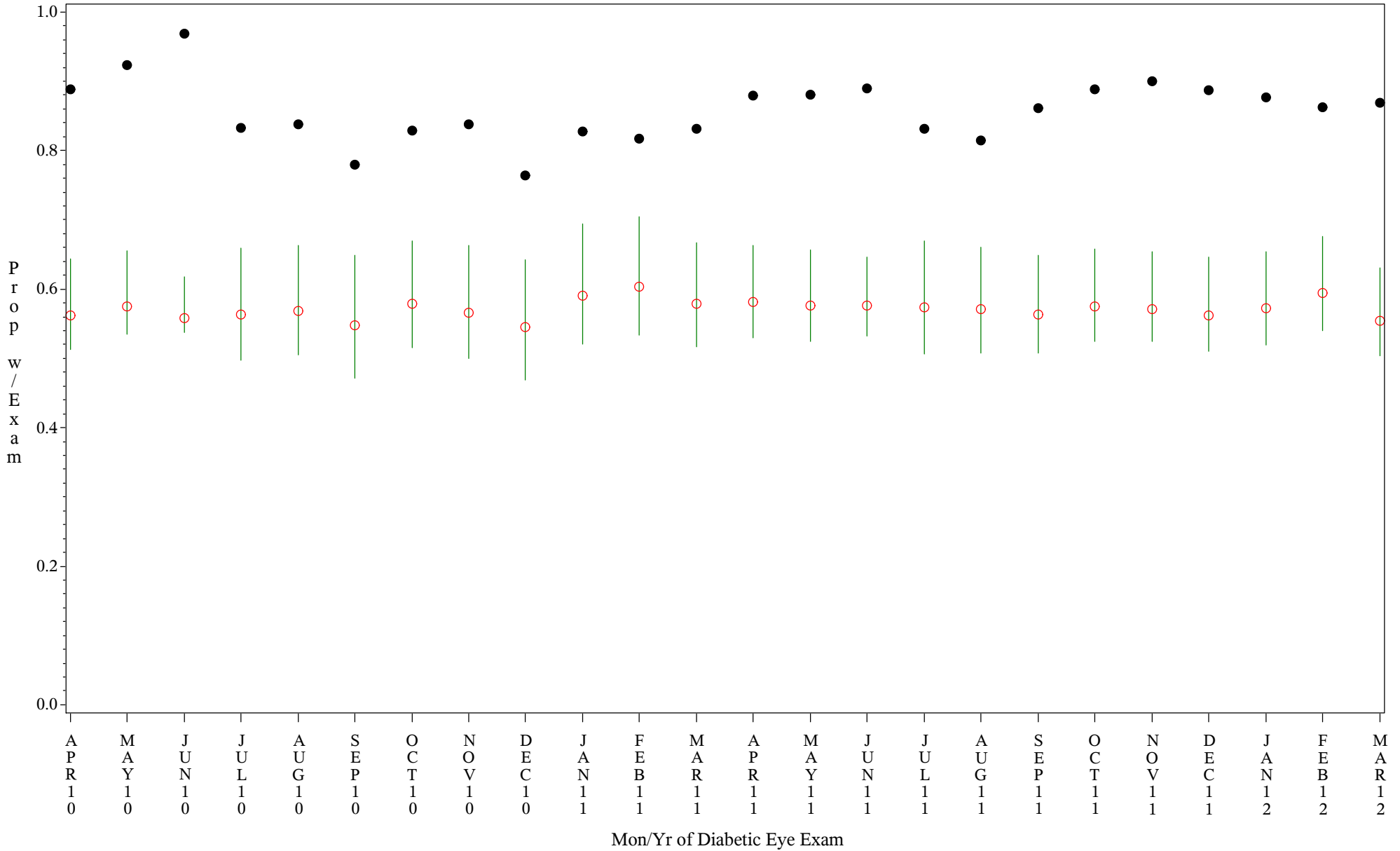
Comp Chrt for Early Diagnosis of Diabetic Retinopathy (#5090)

Time Period: Apr 2010 - Mar 2012

Denominator=All Diabetic Patients, Numerator=Diabetic Eye Exam

Chart created: Wednesday, 25JUL2012

hospital=Mescalero - Albuquerque



PLOT ● Organization's Observed Rate ○ Expected Rate-Comparison Group

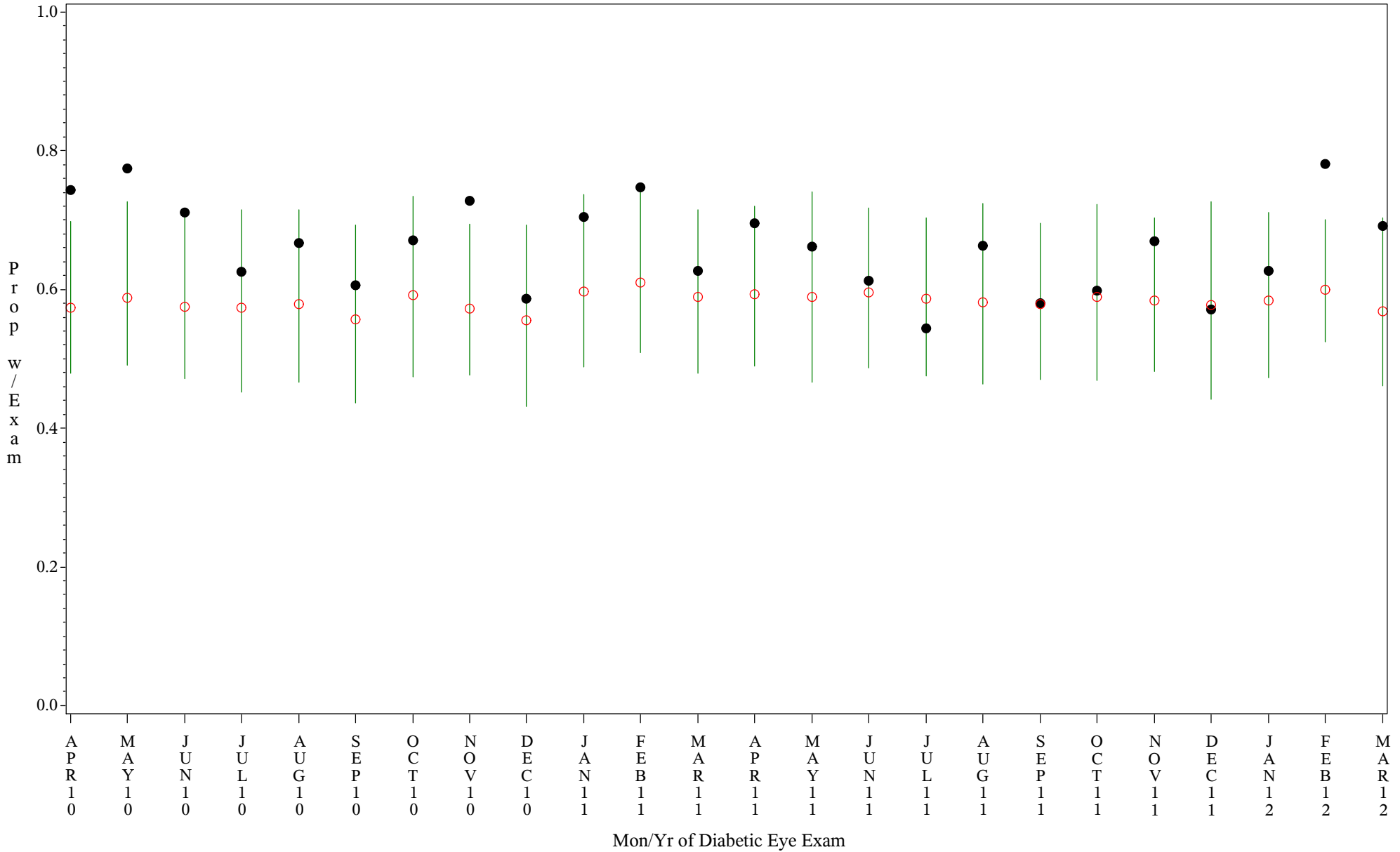
Comp Chrt for Early Diagnosis of Diabetic Retinopathy (#5090)

Time Period: Apr 2010 - Mar 2012

Denominator=All Diabetic Patients, Numerator=Diabetic Eye Exam

Chart created: Wednesday, 25JUL2012

hospital=Santa Fe - Albuquerque



PLOT ● Organization's Observed Rate ○ Expected Rate-Comparison Group

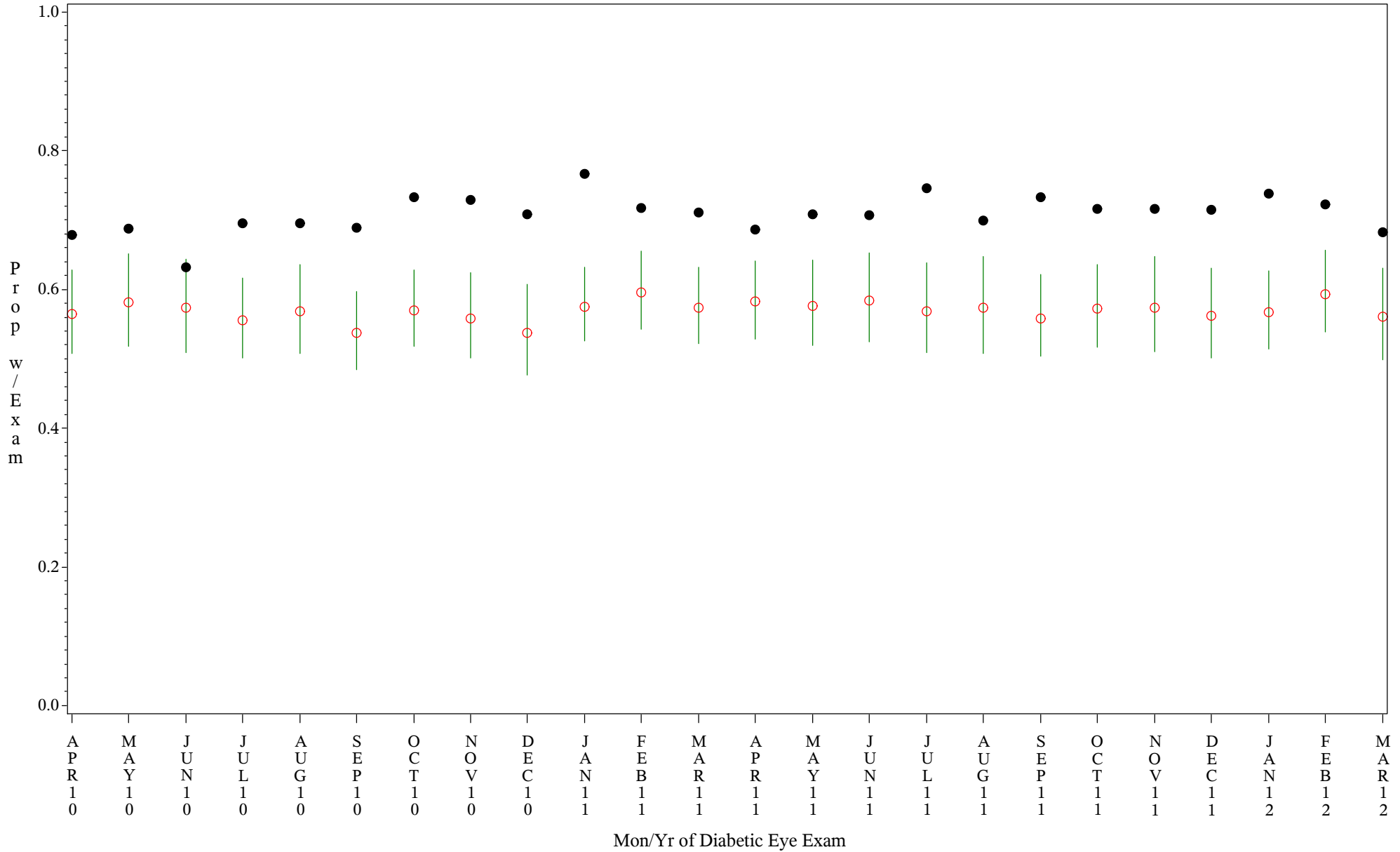
Comp Chrt for Early Diagnosis of Diabetic Retinopathy (#5090)

Time Period: Apr 2010 - Mar 2012

Denominator=All Diabetic Patients, Numerator=Diabetic Eye Exam

Chart created: Wednesday, 25JUL2012

hospital=Zuni - Albuquerque



PLOT ● Organization's Observed Rate ○ Expected Rate-Comparison Group

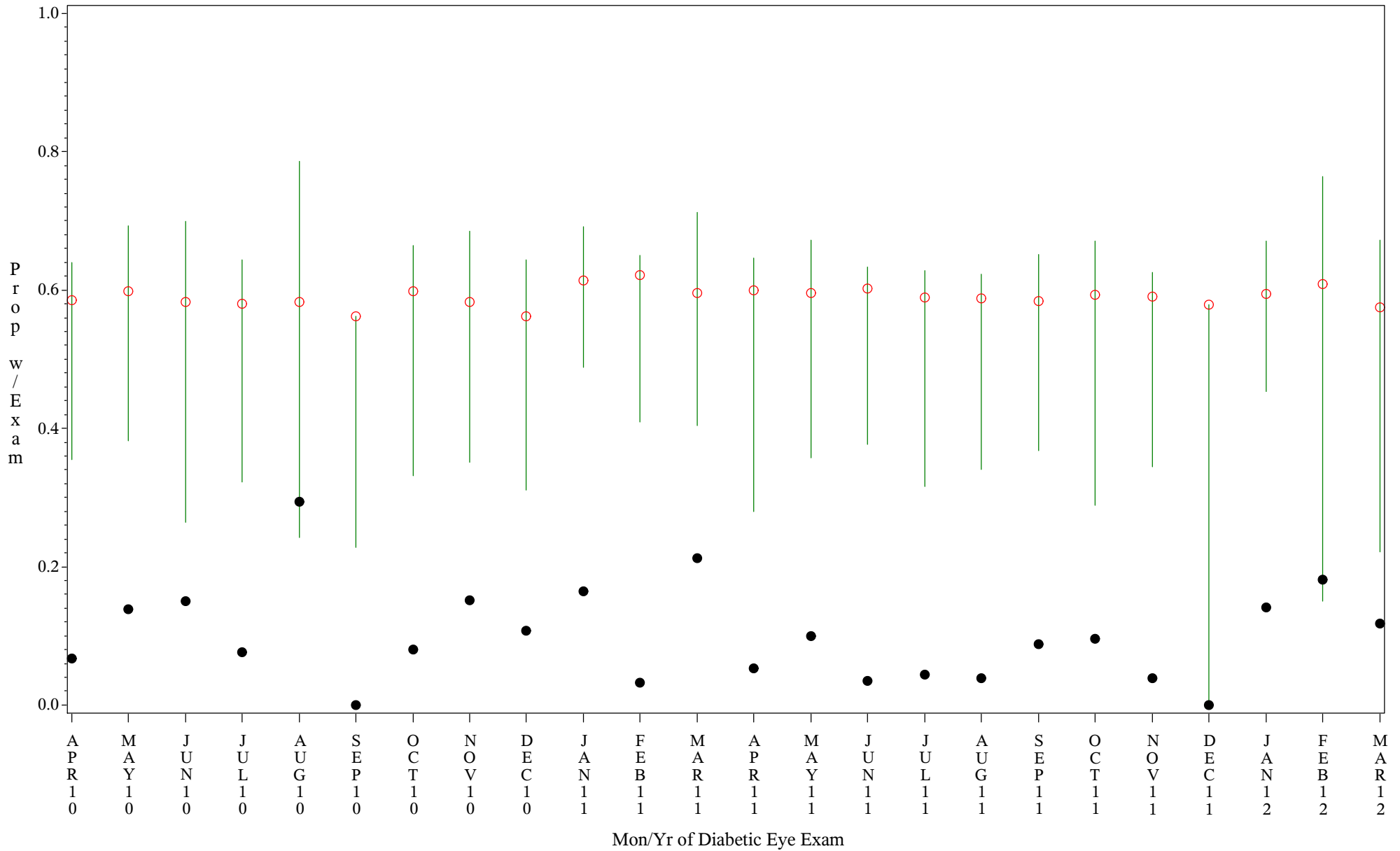
Comp Chrt for Early Diagnosis of Diabetic Retinopathy (#5090)

Time Period: Apr 2010 - Mar 2012

Denominator=All Diabetic Patients, Numerator=Diabetic Eye Exam

Chart created: Wednesday, 25JUL2012

hospital=Barrow - Alaska



PLOT ● Organization's Observed Rate ○ Expected Rate-Comparison Group

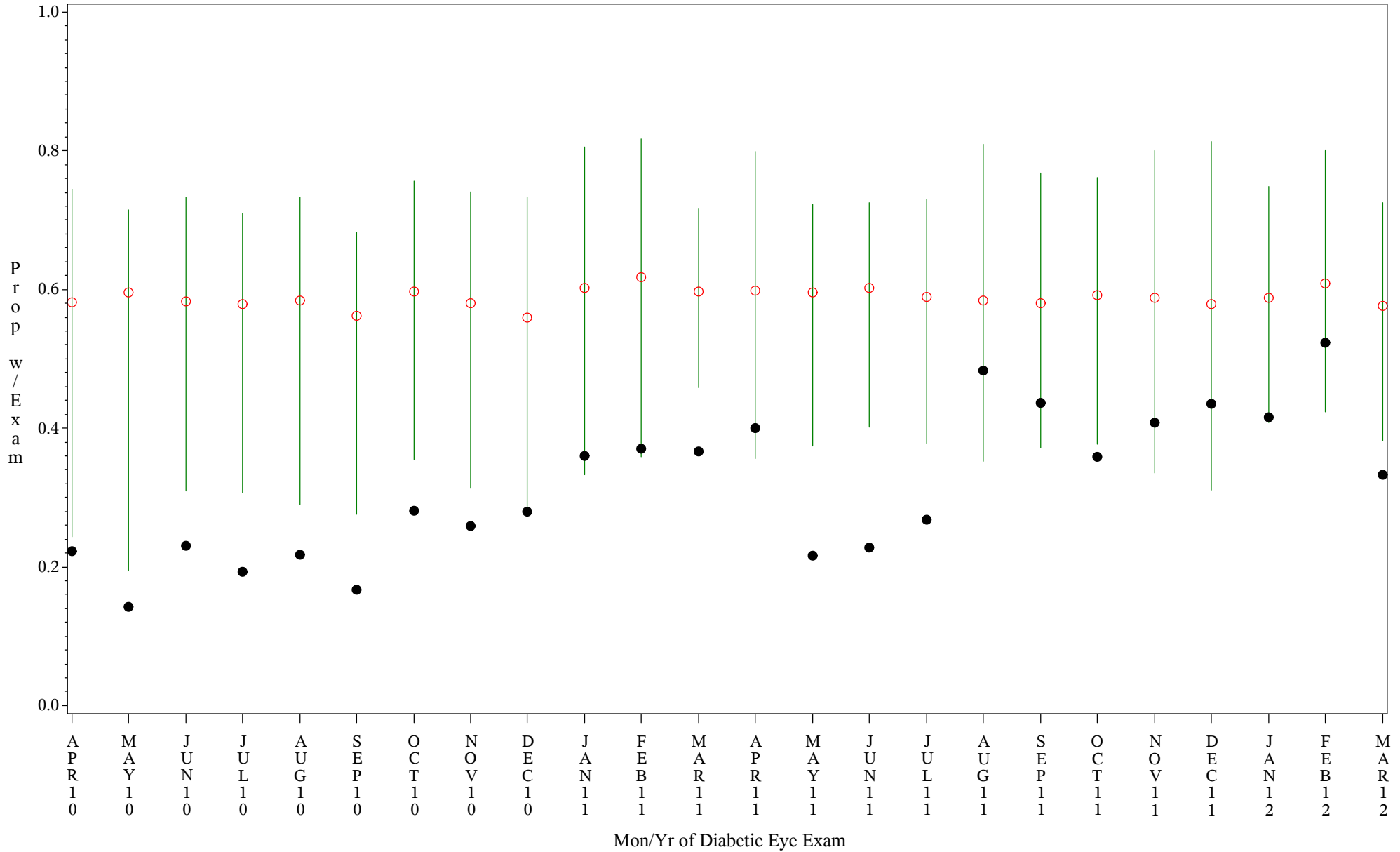
Comp Chrt for Early Diagnosis of Diabetic Retinopathy (#5090)

Time Period: Apr 2010 - Mar 2012

Denominator=All Diabetic Patients, Numerator=Diabetic Eye Exam

Chart created: Wednesday, 25JUL2012

hospital=Maniilaq - Alaska



PLOT ● Organization's Observed Rate ○ Expected Rate-Comparison Group

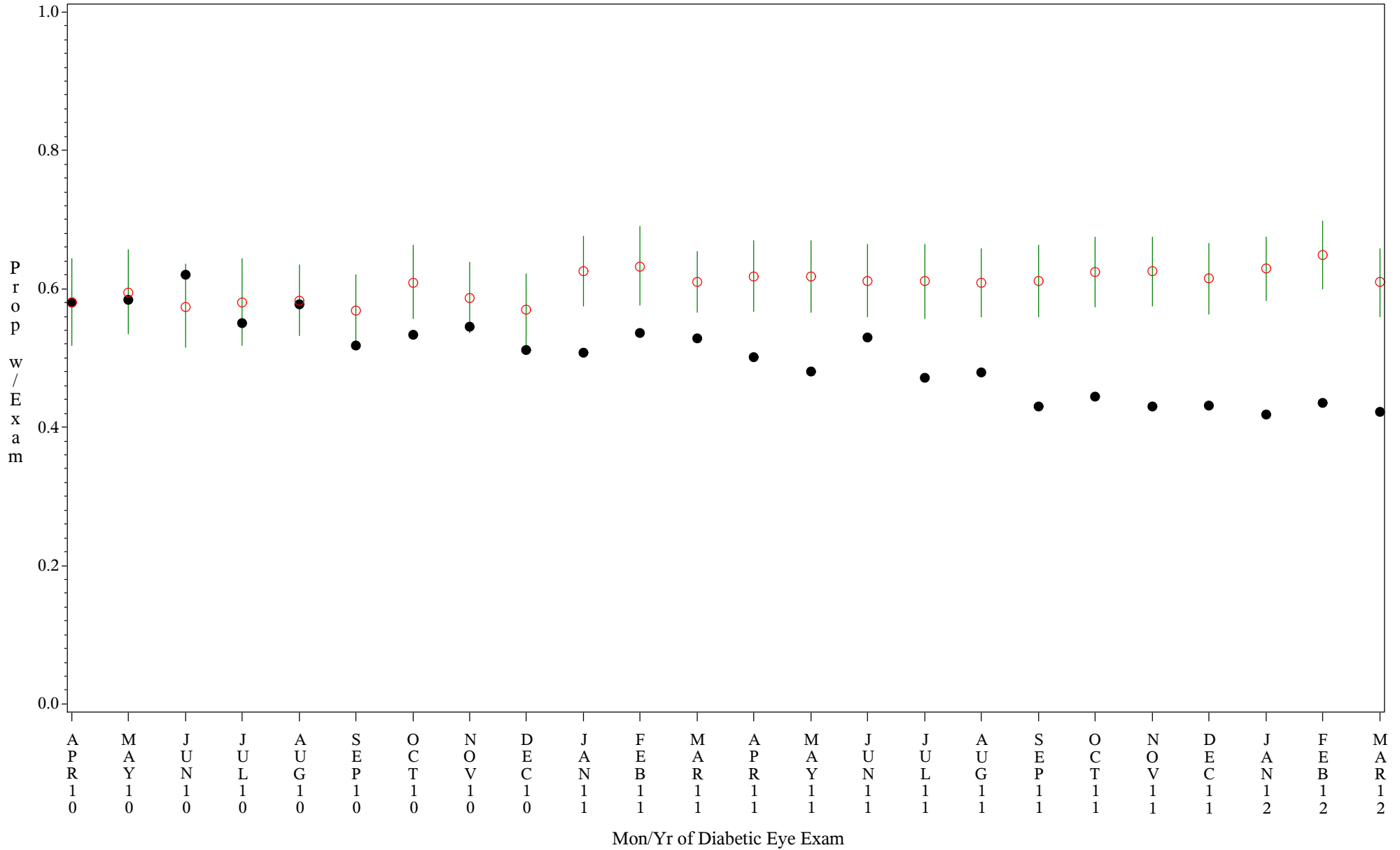
Comp Chrt for Early Diagnosis of Diabetic Retinopathy (#5090)

Time Period: Apr 2010 - Mar 2012

Denominator=All Diabetic Patients, Numerator=Diabetic Eye Exam

Chart created: Wednesday, 25JUL2012

hospital=Chickasaw Hospital - Oklahoma



PLOT ● Organization's Observed Rate ○ Expected Rate-Comparison Group

Source: ORYX2.rate5090

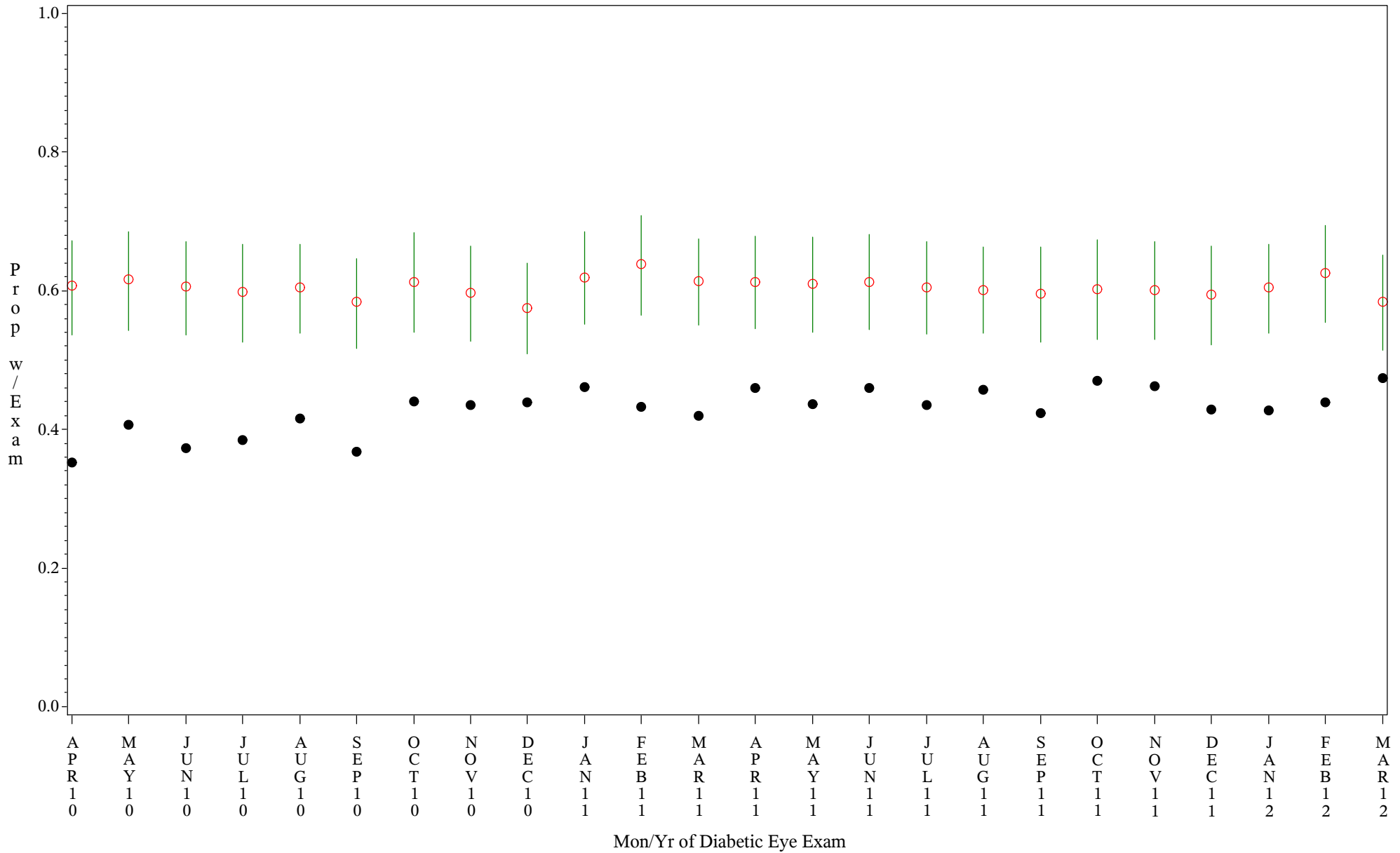
Comp Chrt for Early Diagnosis of Diabetic Retinopathy (#5090)

Time Period: Apr 2010 - Mar 2012

Denominator=All Diabetic Patients, Numerator=Diabetic Eye Exam

Chart created: Wednesday, 25JUL2012

hospital=Choctaw Hosp - Nashville



PLOT ● Organization's Observed Rate ○ Expected Rate-Comparison Group

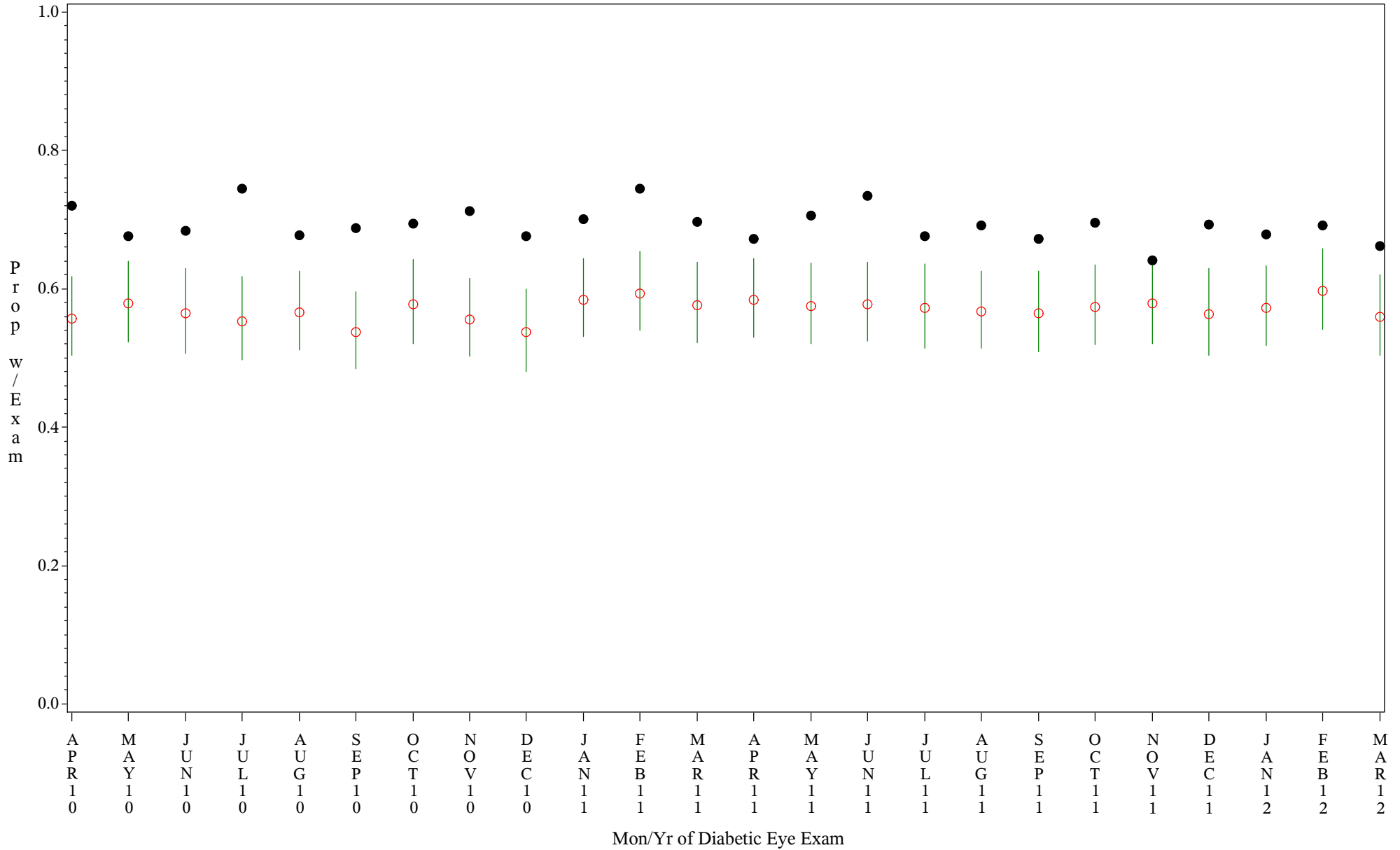
Comp Chrt for Early Diagnosis of Diabetic Retinopathy (#5090)

Time Period: Apr 2010 - Mar 2012

Denominator=All Diabetic Patients, Numerator=Diabetic Eye Exam

Chart created: Wednesday, 25JUL2012

hospital=White River - Phoenix



PLOT ● Organization's Observed Rate ○ Expected Rate-Comparison Group

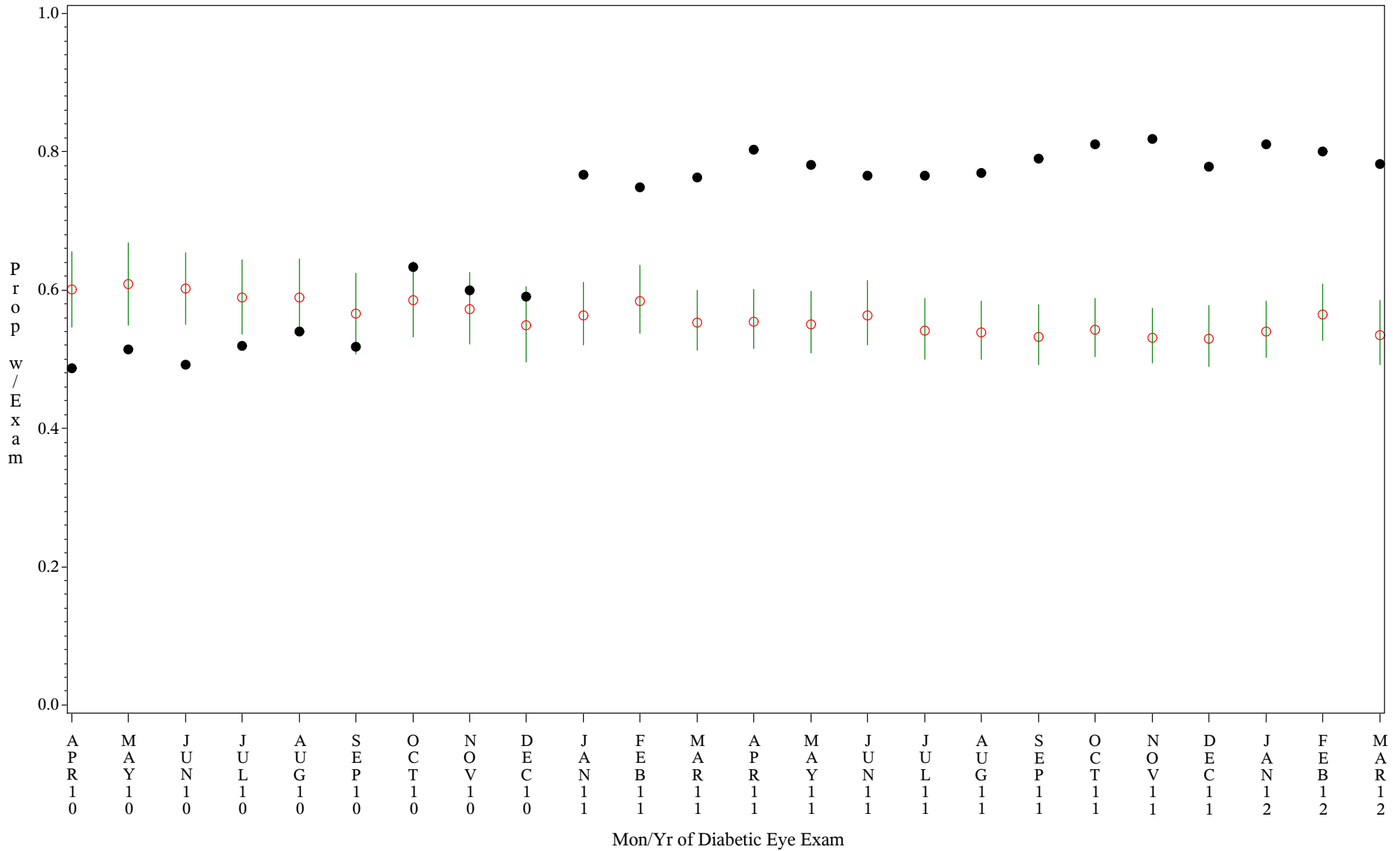
Comp Chrt for Early Diagnosis of Diabetic Retinopathy (#5090)

Time Period: Apr 2010 - Mar 2012

Denominator=All Diabetic Patients, Numerator=Diabetic Eye Exam

Chart created: Wednesday, 25JUL2012

hospital=Chinle - Navajo



PLOT ● Organization's Observed Rate ○ Expected Rate-Comparison Group

Source: ORYX2.rate5090