

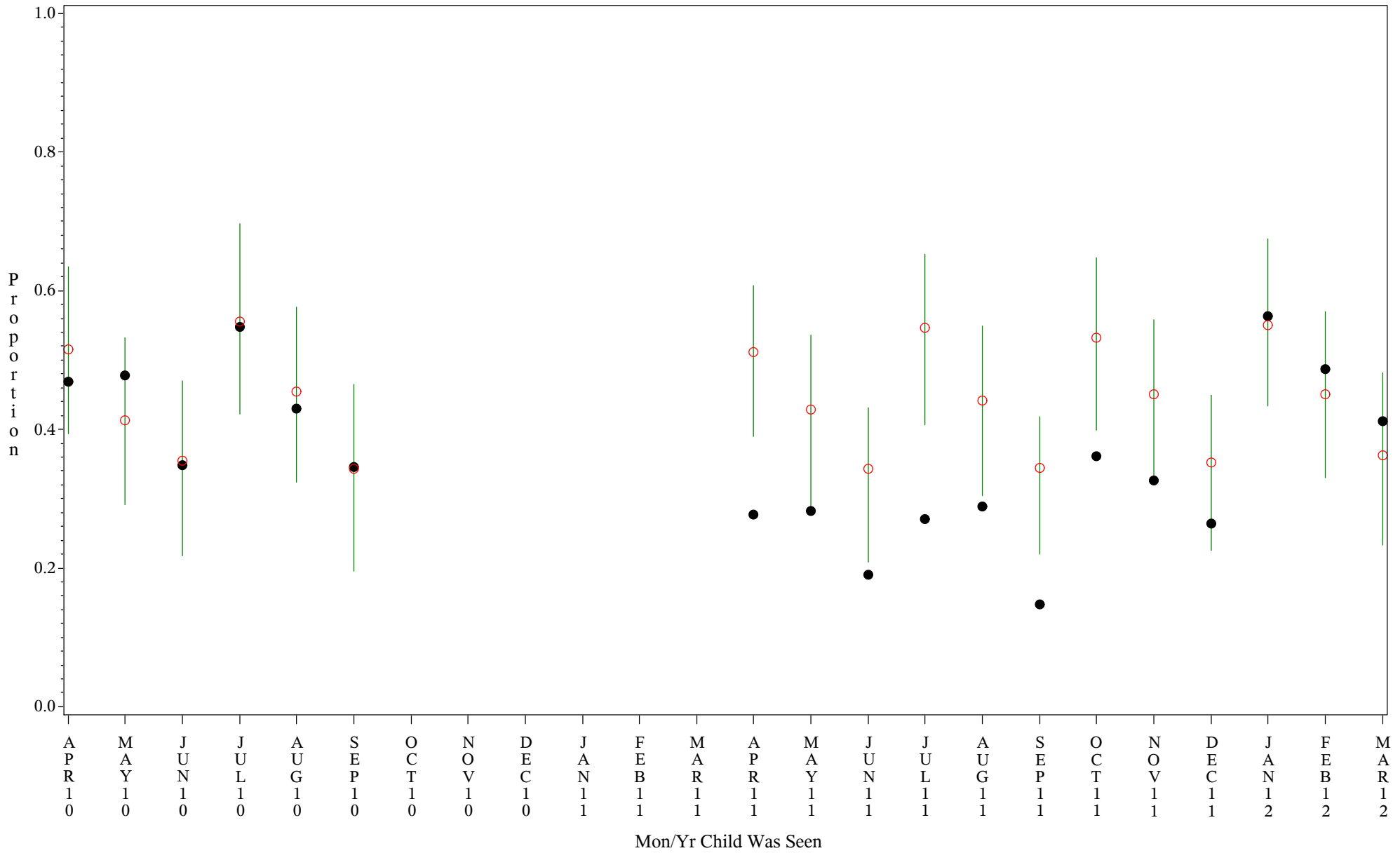
Comparison Chart for Up-to-Date Immuniz (All shots) Indicator 15828 5133

Time Period: Apr 2010 - Mar 2012

Denominator=Children & age, Numerator=Up-to-Date Shots

Chart created: Thursday, 02AUG2012

HOSPITAL=Sells - Tucson



PLOT ● Organization's Observed Rate ○ Expected Rate-Comparison Group

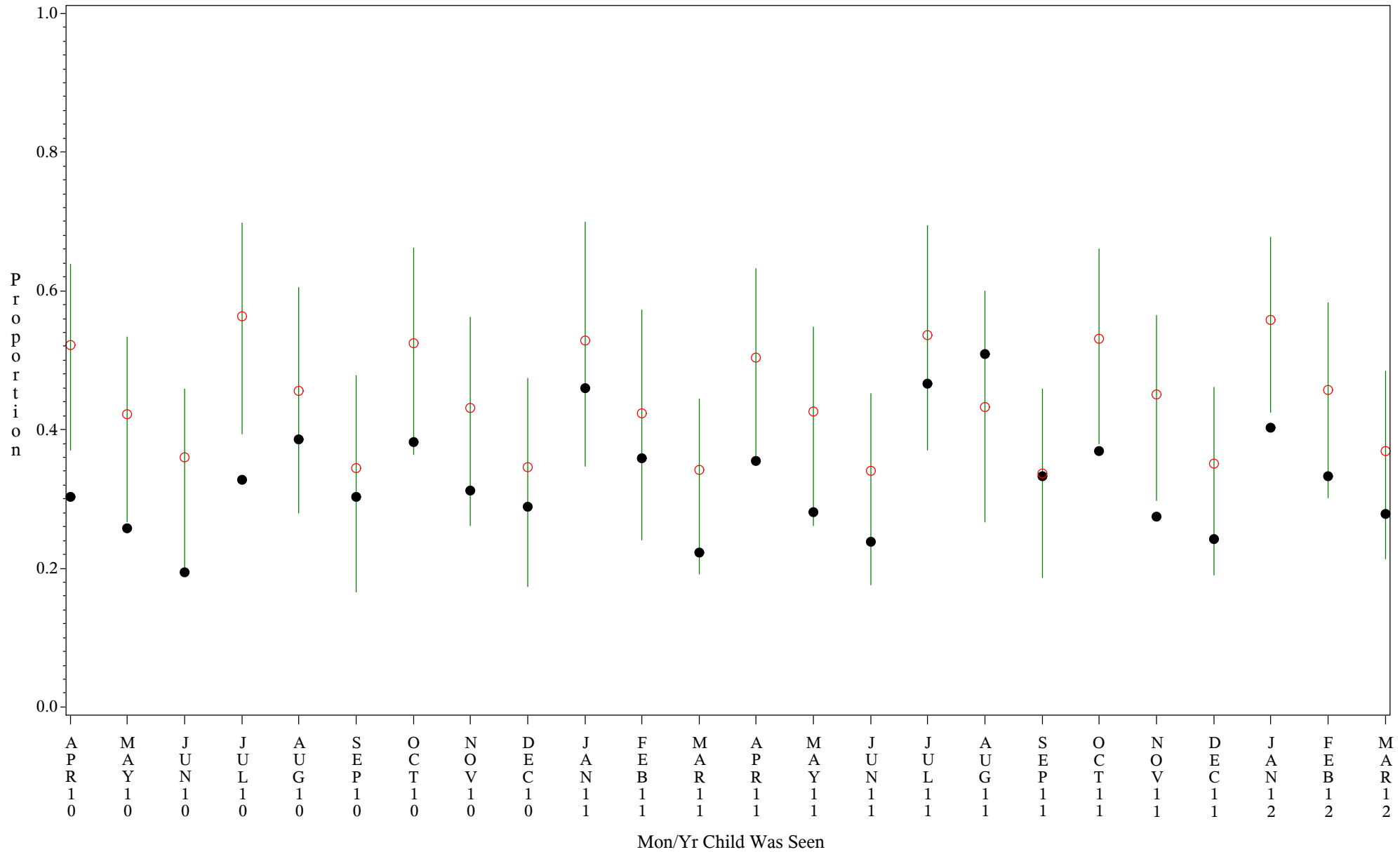
Comparison Chart for Up-to-Date Immuniz (All shots) Indicator 15828 5133

Time Period: Apr 2010 - Mar 2012

Denominator=Children & age, Numerator=Up-to-Date Shots

Chart created: Thursday, 02AUG2012

HOSPITAL=Ft. Yates - Aberdeen



PLOT ● Organization's Observed Rate ○ Expected Rate-Comparison Group

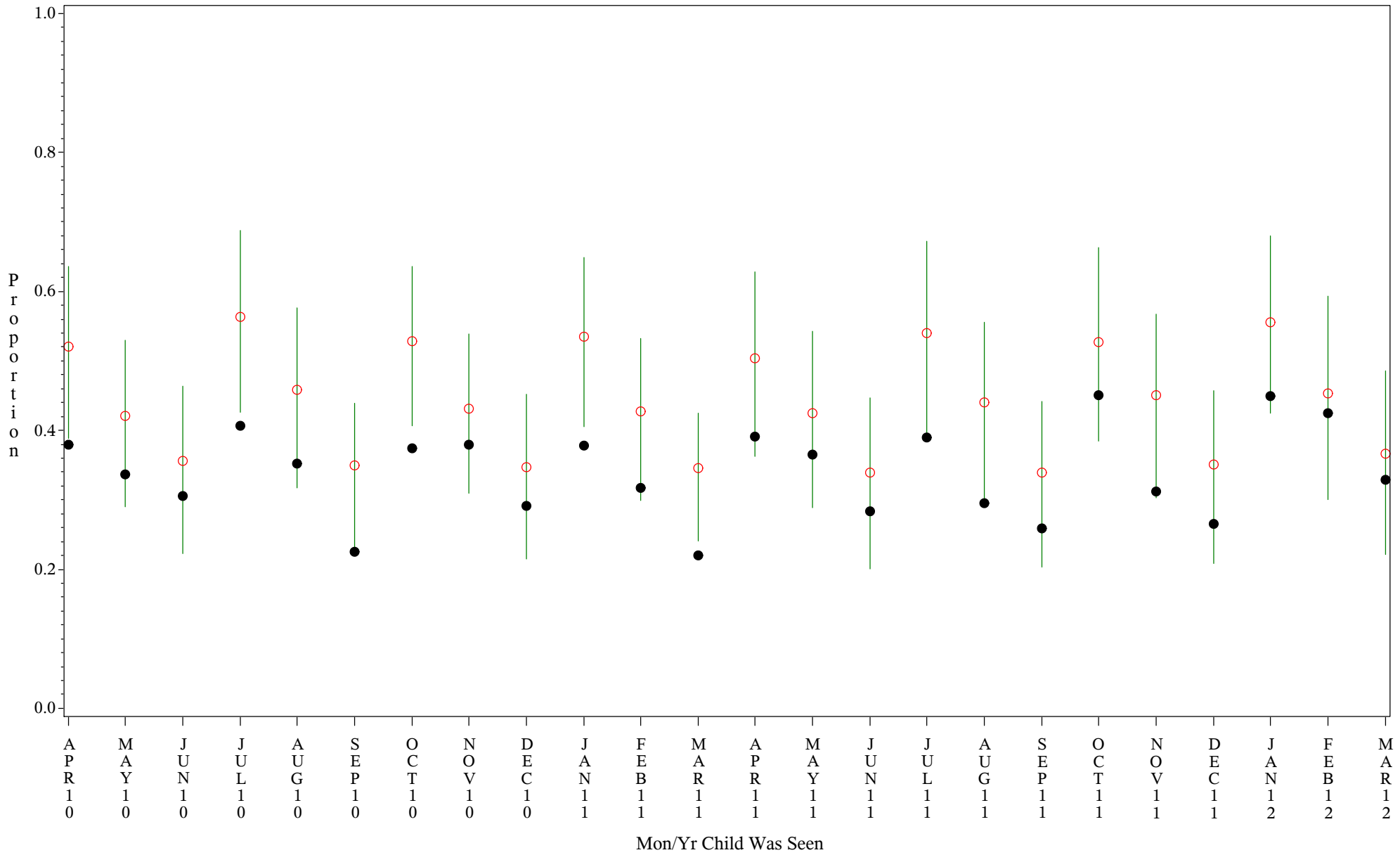
Comparison Chart for Up-to-Date Immuniz (All shots) Indicator 15828 5133

Time Period: Apr 2010 - Mar 2012

Denominator=Children & age, Numerator=Up-to-Date Shots

Chart created: Thursday, 02AUG2012

HOSPITAL=Winnebago - Aberdeen



PLOT ● Organization's Observed Rate ○ Expected Rate-Comparison Group

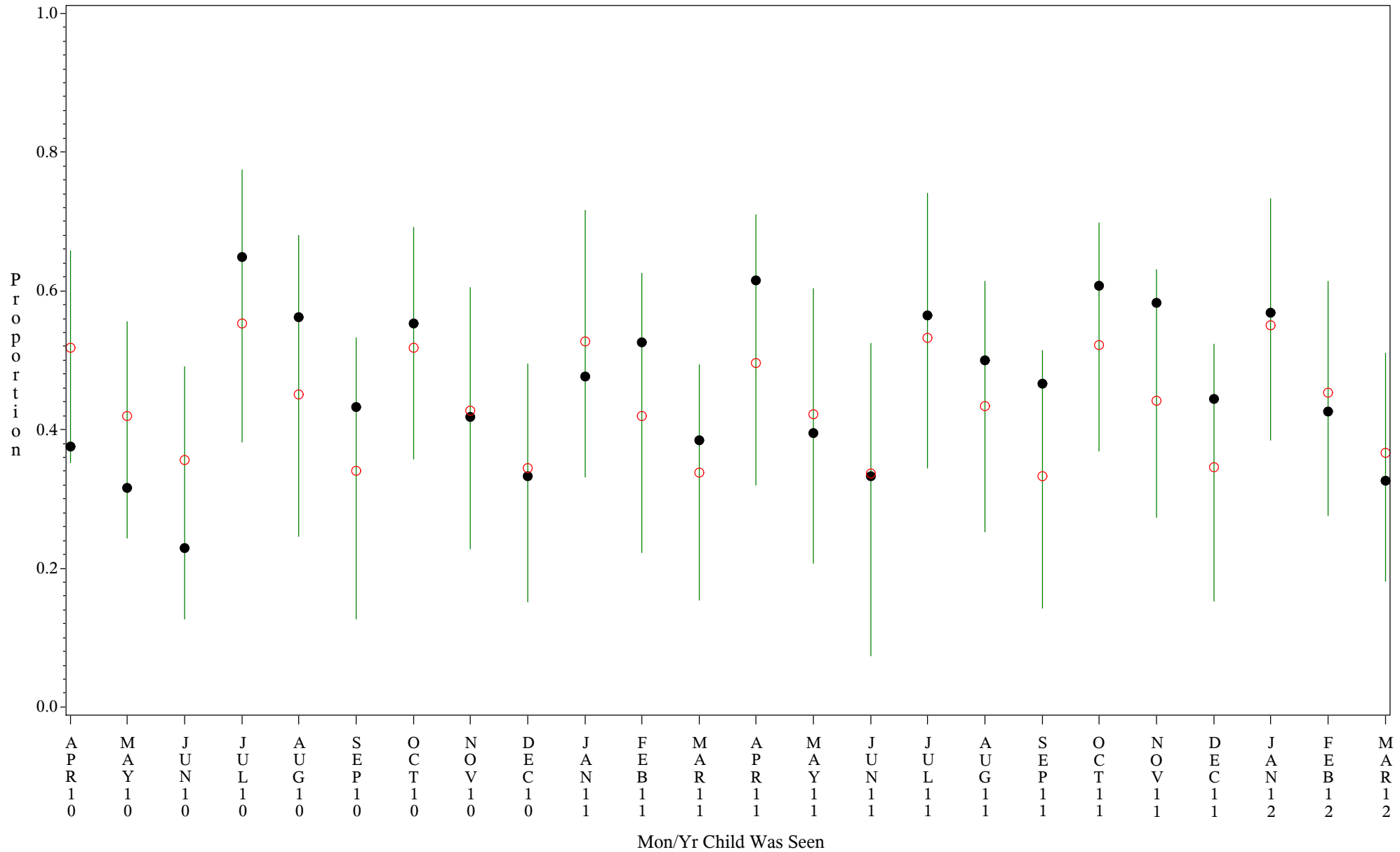
Comparison Chart for Up-to-Date Immuniz (All shots) Indicator 15828 5133

Time Period: Apr 2010 - Mar 2012

Denominator=Children & age, Numerator=Up-to-Date Shots

Chart created: Thursday, 02AUG2012

HOSPITAL=Mescalero - Albuquerque



PLOT ● Organization's Observed Rate ○ Expected Rate-Comparison Group

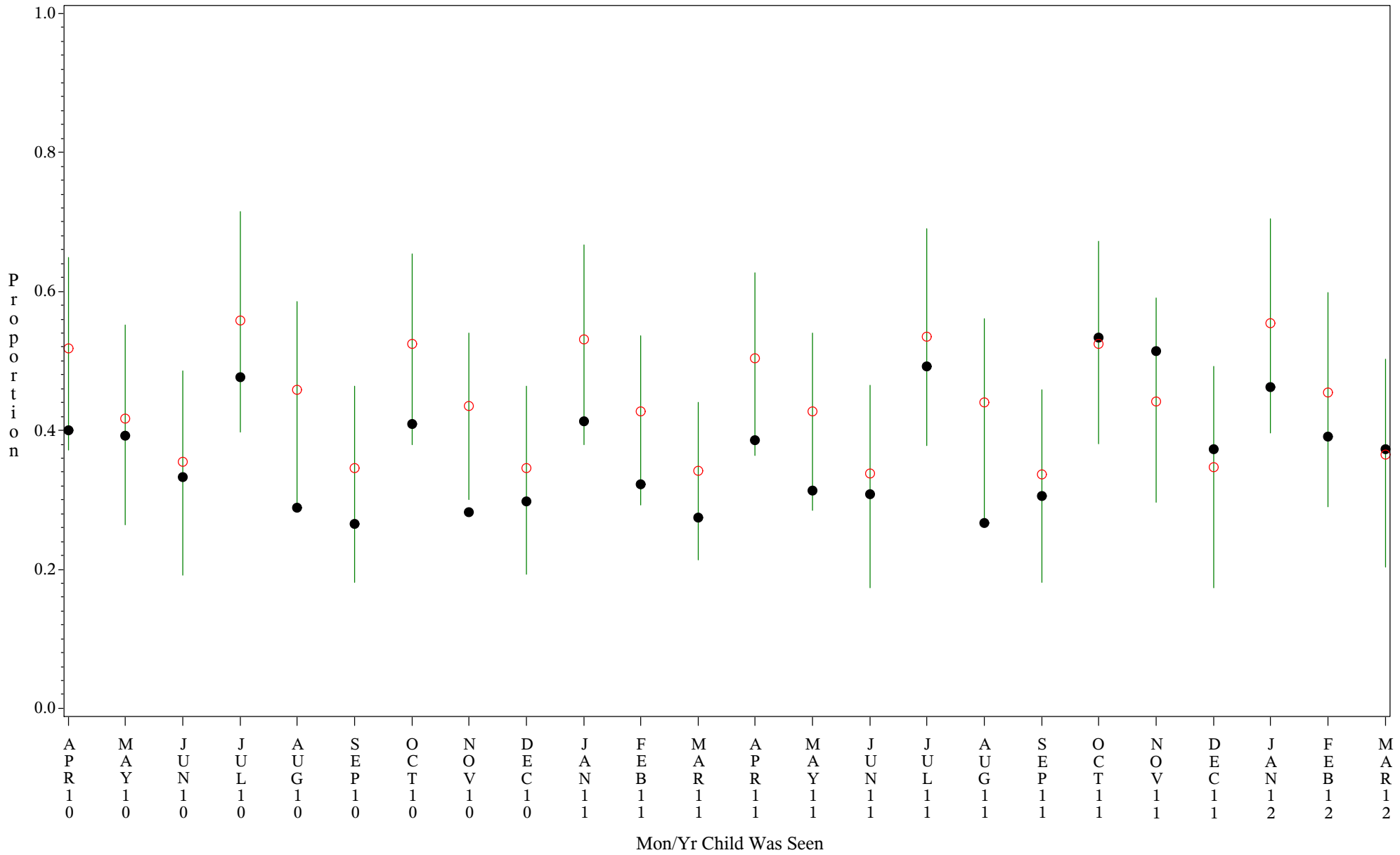
Comparison Chart for Up-to-Date Immuniz (All shots) Indicator 15828 5133

Time Period: Apr 2010 - Mar 2012

Denominator=Children & age, Numerator=Up-to-Date Shots

Chart created: Thursday, 02AUG2012

HOSPITAL=Santa Fe - Albuquerque



PLOT ● Organization's Observed Rate ○ Expected Rate-Comparison Group

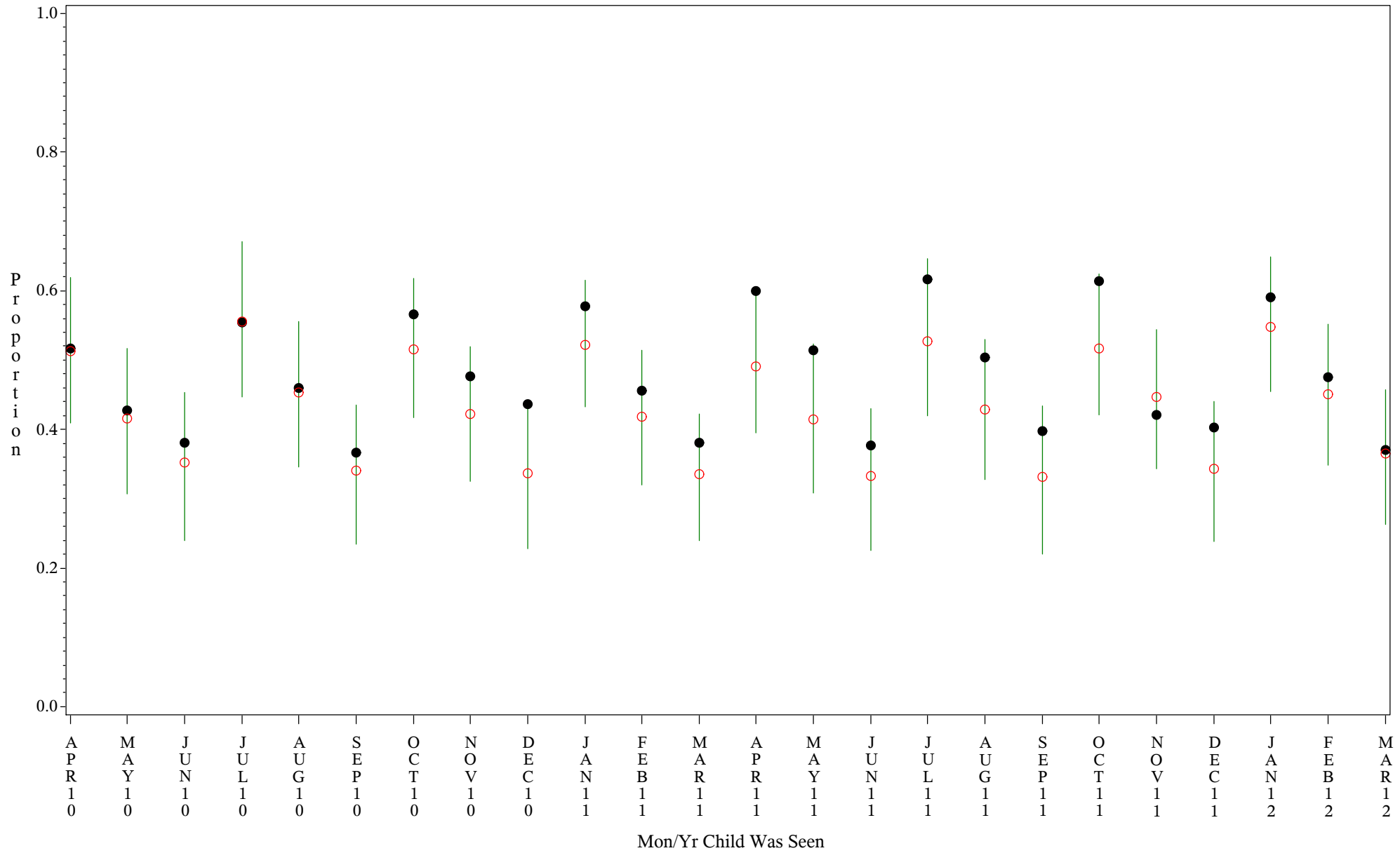
Comparison Chart for Up-to-Date Immuniz (All shots) Indicator 15828 5133

Time Period: Apr 2010 - Mar 2012

Denominator=Children & age, Numerator=Up-to-Date Shots

Chart created: Thursday, 02AUG2012

HOSPITAL=Zuni - Albuquerque



PLOT ● Organization's Observed Rate ○ Expected Rate-Comparison Group

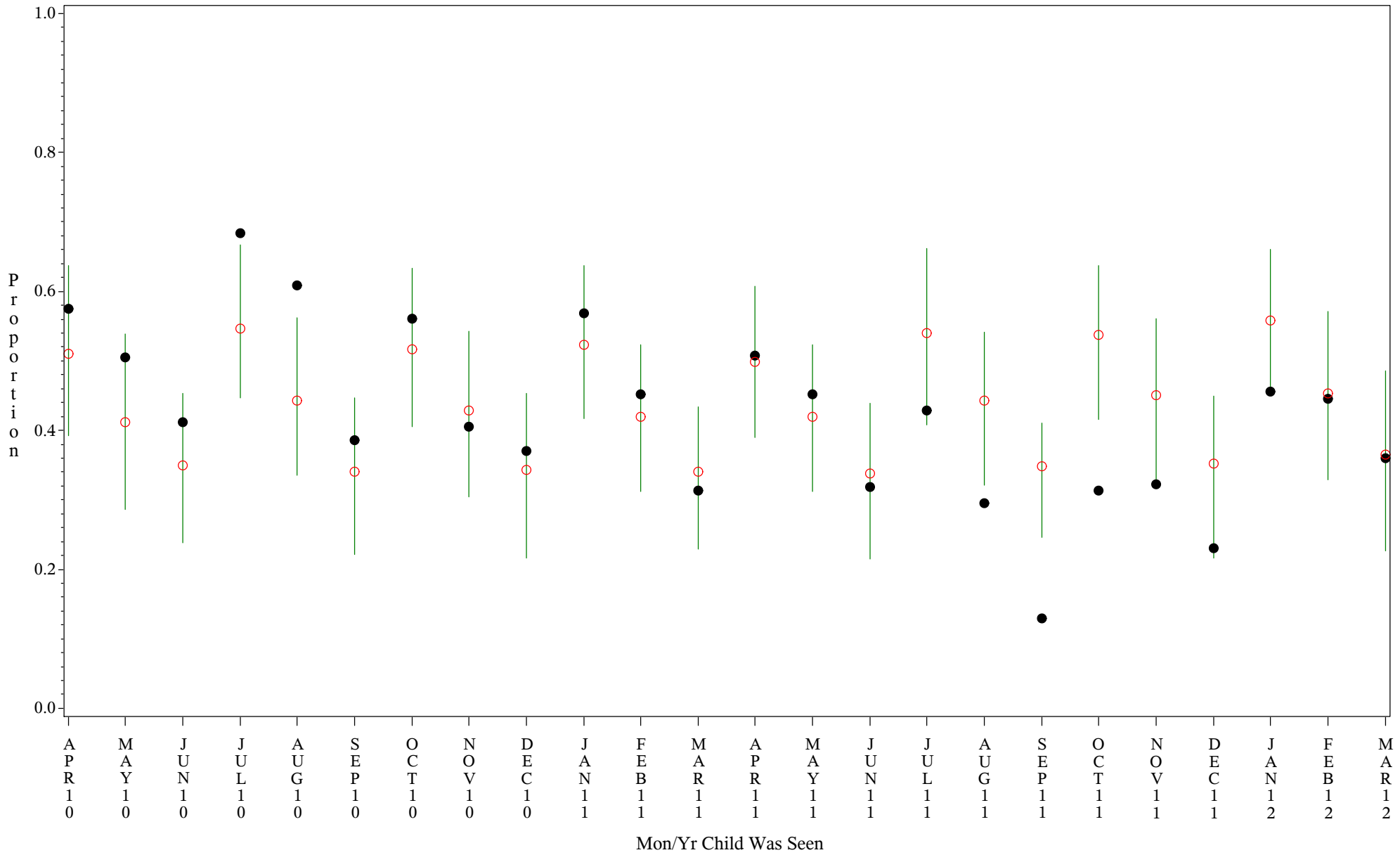
Comparison Chart for Up-to-Date Immuniz (All shots) Indicator 15828 5133

Time Period: Apr 2010 - Mar 2012

Denominator=Children & age, Numerator=Up-to-Date Shots

Chart created: Thursday, 02AUG2012

HOSPITAL=Barrow - Alaska



PLOT ● Organization's Observed Rate ○ Expected Rate-Comparison Group

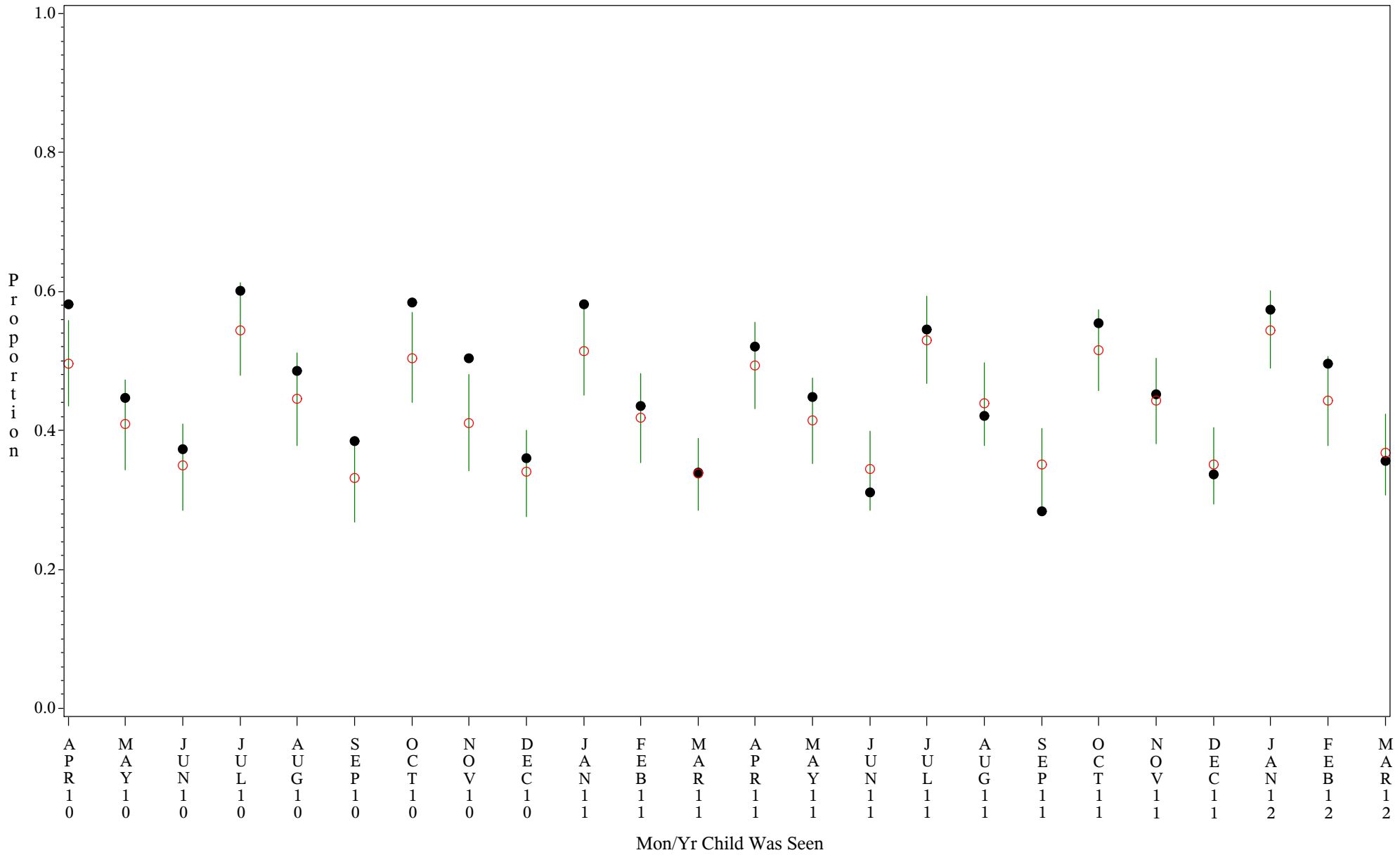
Comparison Chart for Up-to-Date Immuniz (All shots) Indicator 15828 5133

Time Period: Apr 2010 - Mar 2012

Denominator=Children & age, Numerator=Up-to-Date Shots

Chart created: Thursday, 02AUG2012

HOSPITAL=YK Health - Alaska



PLOT ● Organization's Observed Rate ○ Expected Rate-Comparison Group

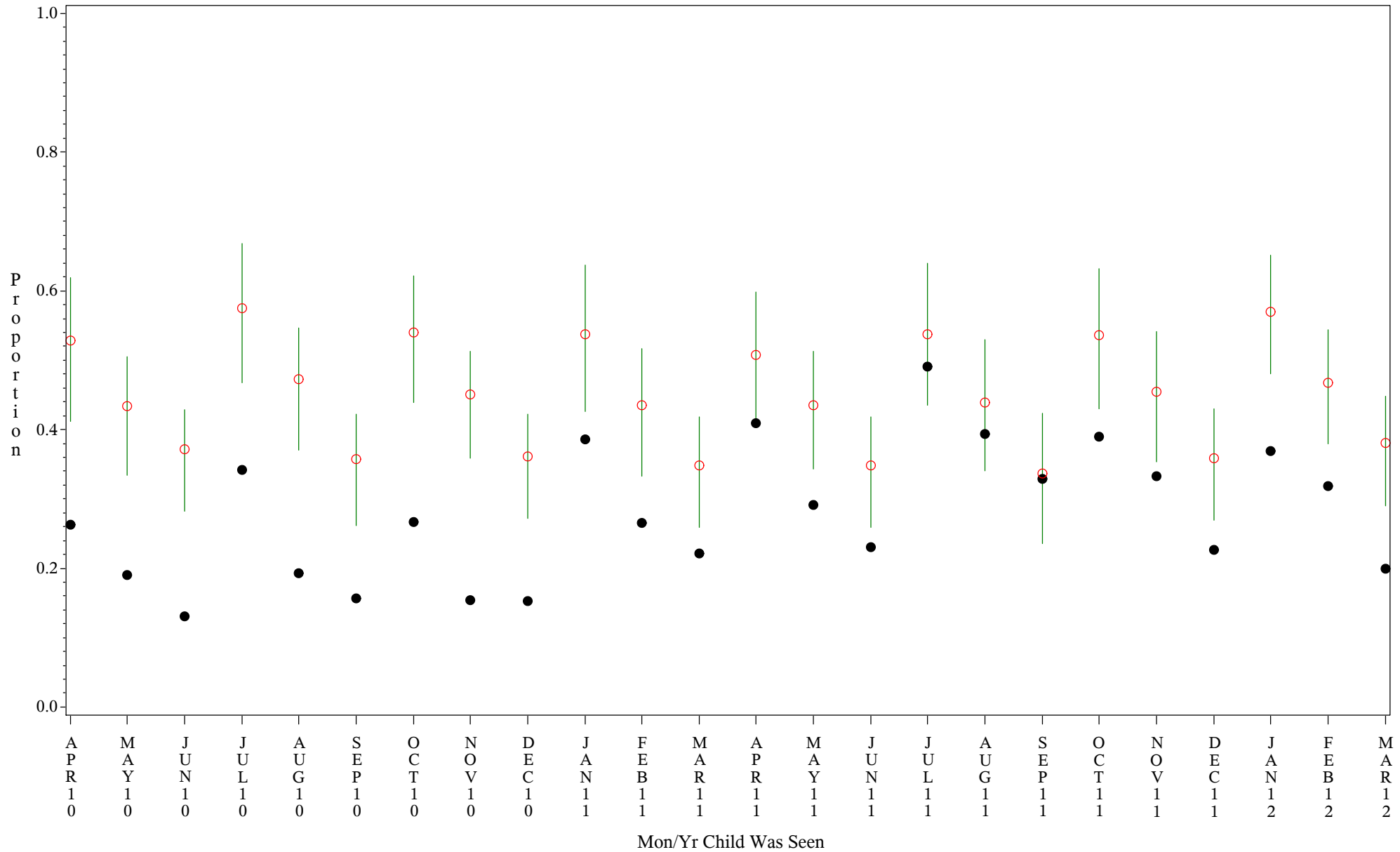
Comparison Chart for Up-to-Date Immuniz (All shots) Indicator 15828 5133

Time Period: Apr 2010 - Mar 2012

Denominator=Children & age, Numerator=Up-to-Date Shots

Chart created: Thursday, 02AUG2012

HOSPITAL=Maniilaq - Alaska



PLOT ● Organization's Observed Rate ○ Expected Rate-Comparison Group

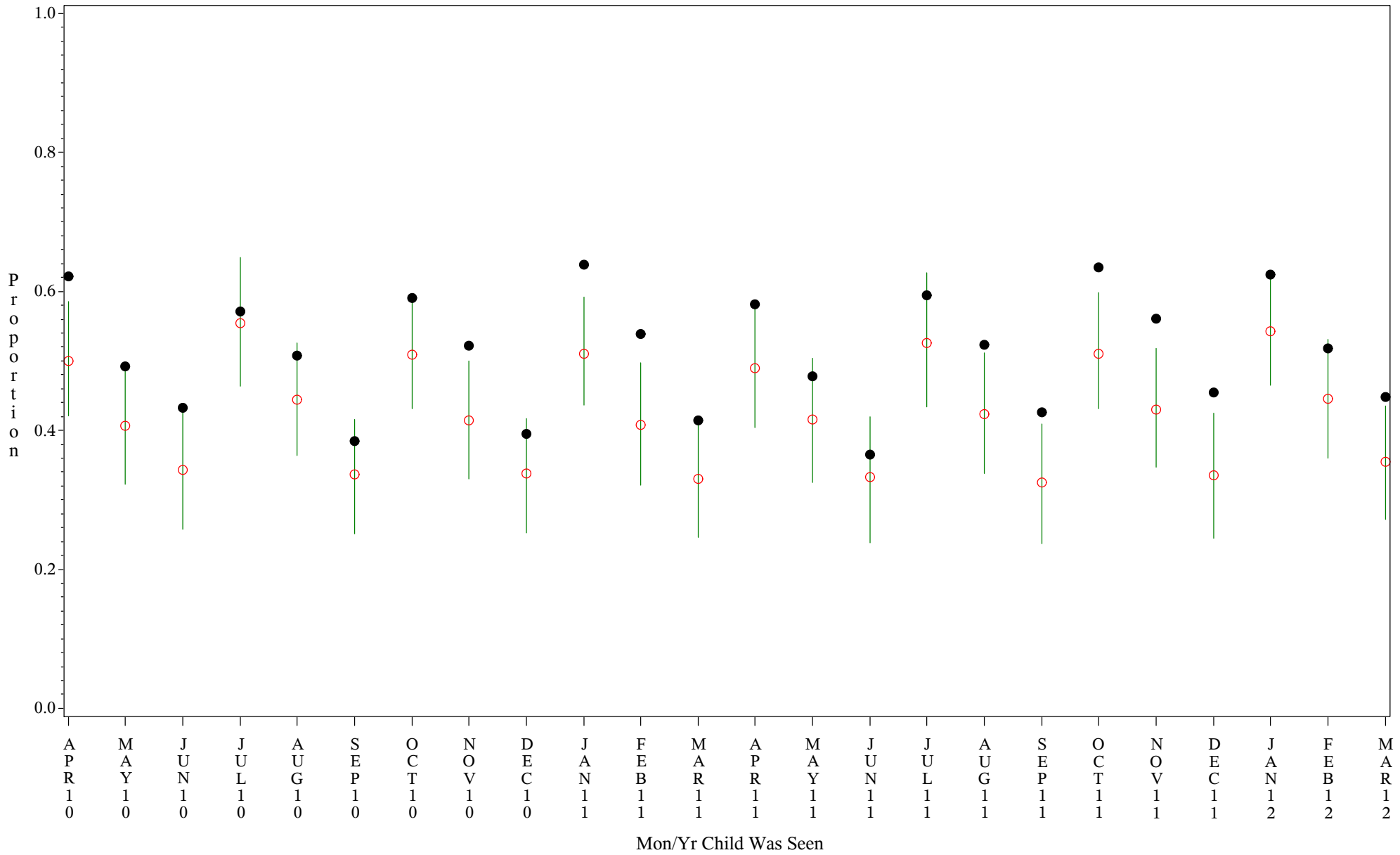
Comparison Chart for Up-to-Date Immuniz (All shots) Indicator 15828 5133

Time Period: Apr 2010 - Mar 2012

Denominator=Children & age, Numerator=Up-to-Date Shots

Chart created: Thursday, 02AUG2012

HOSPITAL=Choctaw Hosp - Nashville



PLOT ● Organization's Observed Rate ○ Expected Rate-Comparison Group

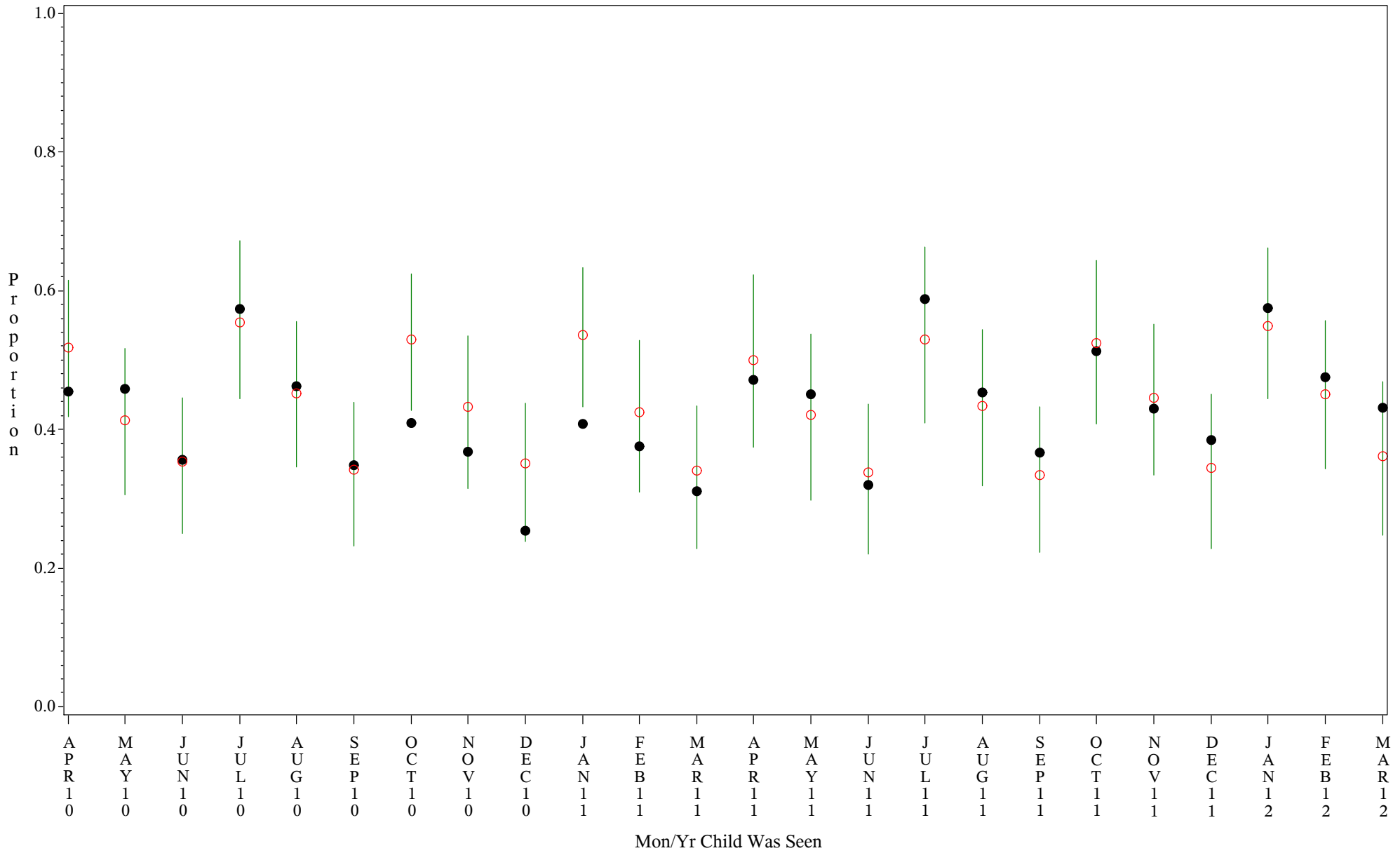
Comparison Chart for Up-to-Date Immuniz (All shots) Indicator 15828 5133

Time Period: Apr 2010 - Mar 2012

Denominator=Children & age, Numerator=Up-to-Date Shots

Chart created: Thursday, 02AUG2012

HOSPITAL=San Carlos - Phoenix



PLOT ● Organization's Observed Rate ○ Expected Rate-Comparison Group

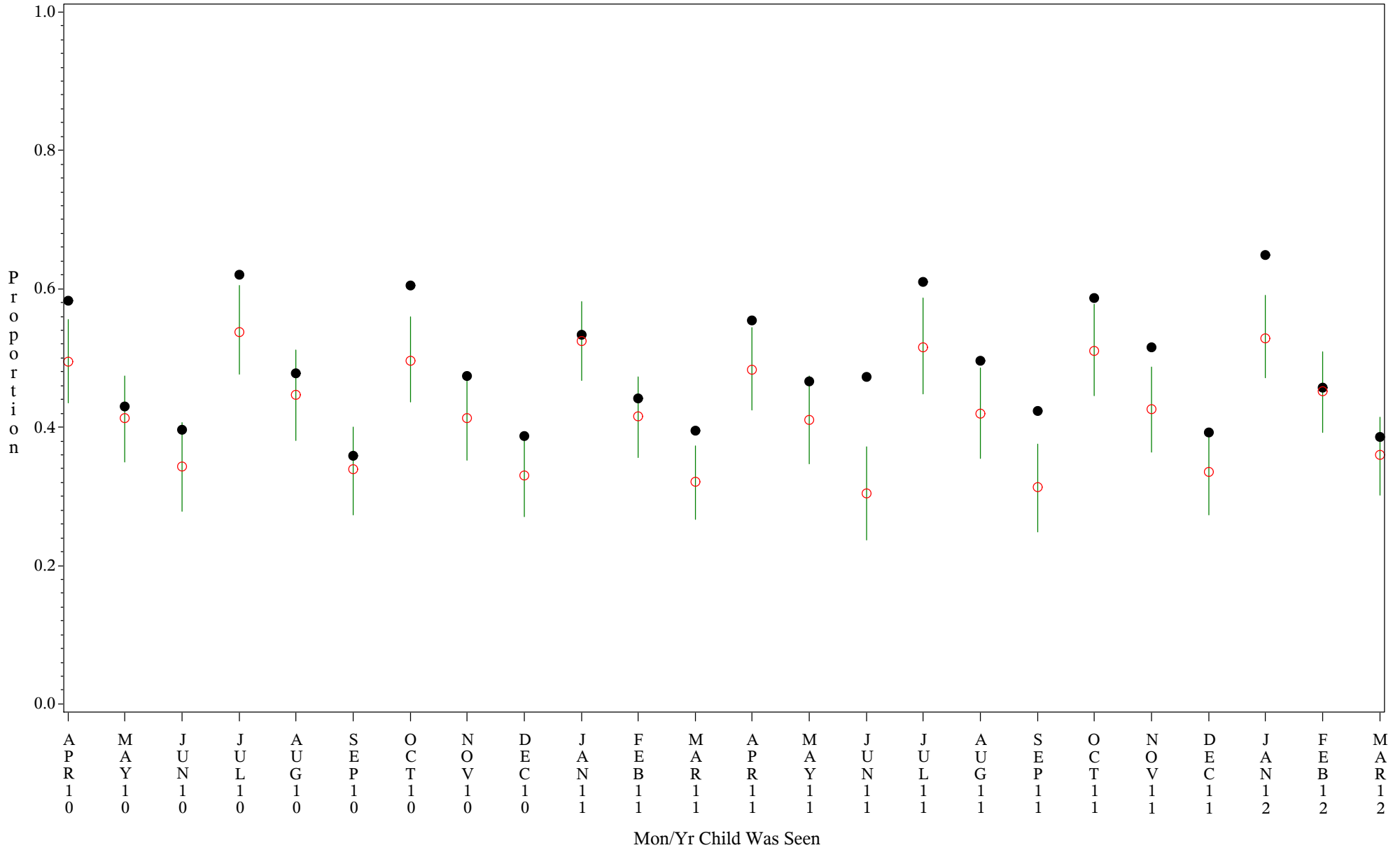
Comparison Chart for Up-to-Date Immuniz (All shots) Indicator 15828 5133

Time Period: Apr 2010 - Mar 2012

Denominator=Children & age, Numerator=Up-to-Date Shots

Chart created: Thursday, 02AUG2012

HOSPITAL=GIMC - Navajo



PLOT ● Organization's Observed Rate ○ Expected Rate-Comparison Group