

2011 Fact Book

The information set forth in this publication is compiled and amended annually by the budget and finance staff of the National Cancer Institute and is intended primarily for the use by members of the Institute and others involved in the administration and management of the National Cancer Program. It is available online at <http://www.cancer.gov>. Questions regarding any of the information contained herein may be directed to the Office of Budget and Finance, National Cancer Institute, 9000 Rockville Pike, Bethesda, Maryland, 20892

TABLE OF CONTENTS

Executive Summary	Fiscal Year 2011 Annual Report.....	iii
Organization	Director's Biography Former Directors of the NCI..... National Cancer Advisory Board..... Boards of Scientific Counselors and Advisors..... President's Cancer Panel Scientific Program Leaders..... Clinical Trials & Translational Research Advisory Committee.... NCI Director's Consumer Liaison Group..... Operational Organization Charts: National Cancer Institute Office of the Director..... OD I: Office of Management..... OD II: Center for Biomedical Informatics and Information Technology..... OD II: Office of Science Planning and Assessment..... OD III: Office of Communications and Education OD IV: Center for Cancer Genomics..... OD V: Center for Strategic Scientific Initiatives OD V: Center to Reduce Cancer Health Disparities Center for Cancer Research..... Division of Cancer Biology..... Division of Cancer Epidemiology and Genetics..... Division of Cancer Prevention..... Division of Cancer Control and Population Sciences Division of Cancer Treatment and Diagnosis Division of Extramural Activities.....	O-1 O-2 O-4 O-8 O-9 O-9 O-10 O-13 O-14 O-15 O-16 O-17 O-17 O-18 O-19 O-20 O-20 O-21 O-23 O-24 O-25 O-26 O-27 O-28
Cancer Statistics	Links to Cancer Statistics	C-1
Budget Data	NCI Budget..... Program Structure Extramural Funds NCI Obligations by Mechanism..... Division Obligations by Mechanism NIH Management Fund, Service & Supply Fund and GSA Rent.. Special Sources of Funds..... Funding for Various Research Areas	B-1 B-2 B-3 B-4 B-5 B-6 B-7 B-8
Extramural Programs	Research Project Grants: Number of Awards..... Requested, Awarded Awards by Activity Code Activity Code Descriptions Cancer Centers By State..... Specialized Programs of Research Excellence (SPORE)	E-1 E-2 E-3 E-4 E-5 E-6

National Research Service Awards – Pre and Post Doctoral Trainees	E-7
Construction/Renovation and Building & Facilities Funding	E-8
Grant and Contract Awards by State	E-9
Grant and Contract Awards by Country	E-10
Institutions Receiving More than \$15 Million in NCI Support.....	E-11

Historical Trends

Appropriations of the NCI	H-1
Bypass Budget Requests	H-2
Comparison of Bypass Requests and Appropriations of the NCI .	H-3
Comparison of Dollars, Positions and Space	H-4
Personnel Resources	H-5
AIDS Funding History	H-6

This publication may be viewed on the World Wide Web by pointing a browser to the Office of Budget and Finance homepage at <http://obf.cancer.gov/> on the National Cancer Institute’s website: www.nci.nih.gov or www.cancer.gov.

Executive Summary

Fiscal Year 2011 Annual Report

BUDGET IN REVIEW

This report provides a summary of the distribution of the Fiscal Year 2011 budget among the various National Cancer Institute (NCI) research programs and funding mechanisms, funding policies influencing grant awards, and comparisons with prior year allocations. Additional information on the NCI budget is accessible from the NCI Home Page (<http://www.cancer.gov>).

Summary

Funds available to the NCI in FY 2011 totaled over \$5.058 billion, reflecting an decrease of -0.8% and -\$40 million from the previous fiscal year.

Fiscal highlights from FY 2011 include:

- Of the total NCI budget, 43% of the funds were allocated for Research Project Grants (RPGs).
- The total number of RPGs funded was 5,019 (includes SBIR).
- Almost one-fourth of the RPGs awarded were new (Type 1) or competing renewal (Type 2) awards.
- 1,106 competing RPGs were funded.
- One-third of the total NCI budget supported ongoing non-competing (Type 5) RPGs.
- R01 grants were funded to the 7th percentile.
- 144 grants – totaling over \$84 million – were funded as Small Business Innovation Research (SBIR) and Small Business Technology Transfer (STTR) awards.
- Intramural Research comprised about 16% of the total NCI budget in FY 2011. Of this amount, 10% was for Labs and Bench Research and the remaining 6% was for infrastructure and support.

NCI Dollars by Mechanism for FY 2010 and 2011
(in thousands)

	2010	2011	Change '10 to '11	
			Am't	%
Research Project Grants:				
Noncompeting	1,536,844	1,631,514	94,670	6.2%
Admin Supplements	28,947	23,619	-5,328	-18.4%
Competing	516,598	424,494	-92,104	-17.8%
Subtotal, RPG	2,082,389	2,079,627	-2,762	-0.1%
SBIR/STTR	85,669	84,054	-1,615	-1.9%
Total, RPG	2,168,058	2,163,681	-4,377	-0.2%
Cancer Centers	295,856	278,345	-17,511	-5.9%
SPOREs	133,810	121,868	-11,942	-8.9%
Other P50s/P20s	38,765	35,172	-3,593	-9.3%
Other Specialized Centers	142,702	162,652	19,950	14.0%
Total: Centers, Spec Ctrs, & SPOREs	611,133	598,037	-13,096	-2.1%
Research Career Program	74,914	73,615	-1,299	-1.7%
Cancer Education	35,444	32,590	-2,854	-8.1%
Clinical Cooperative Groups	254,487	243,880	-10,607	-4.2%
Other Grants	77,768	75,546	-2,222	-2.9%
Subtotal, Other	442,613	425,631	-16,982	-3.8%
Total, Research Grants	3,221,804	3,187,349	-34,455	-1.1%
National Research Service Awards	67,564	67,654	90	0.1%
R&D Contracts	613,762	587,035	-26,727	-4.4%
Intramural Research	805,332	833,670	28,338	3.5%
Research Management & Support	381,765	374,477	-7,288	-1.9%
Construction	-	-	-	0.0%
Buildings and Facilities	7,920	7,920	-	0.0%
Total, NCI	5,098,147 *	5,058,105 **	-40,042	-0.8%
AIDS research included above	[272,130]	[269,953]	-2,177	-0.8%

*Cancer Prevention and Control was eliminated as a Budget Mechanism in FY09.

**EXCLUDES projects awarded with Stamp Out Breast Cancer funds.

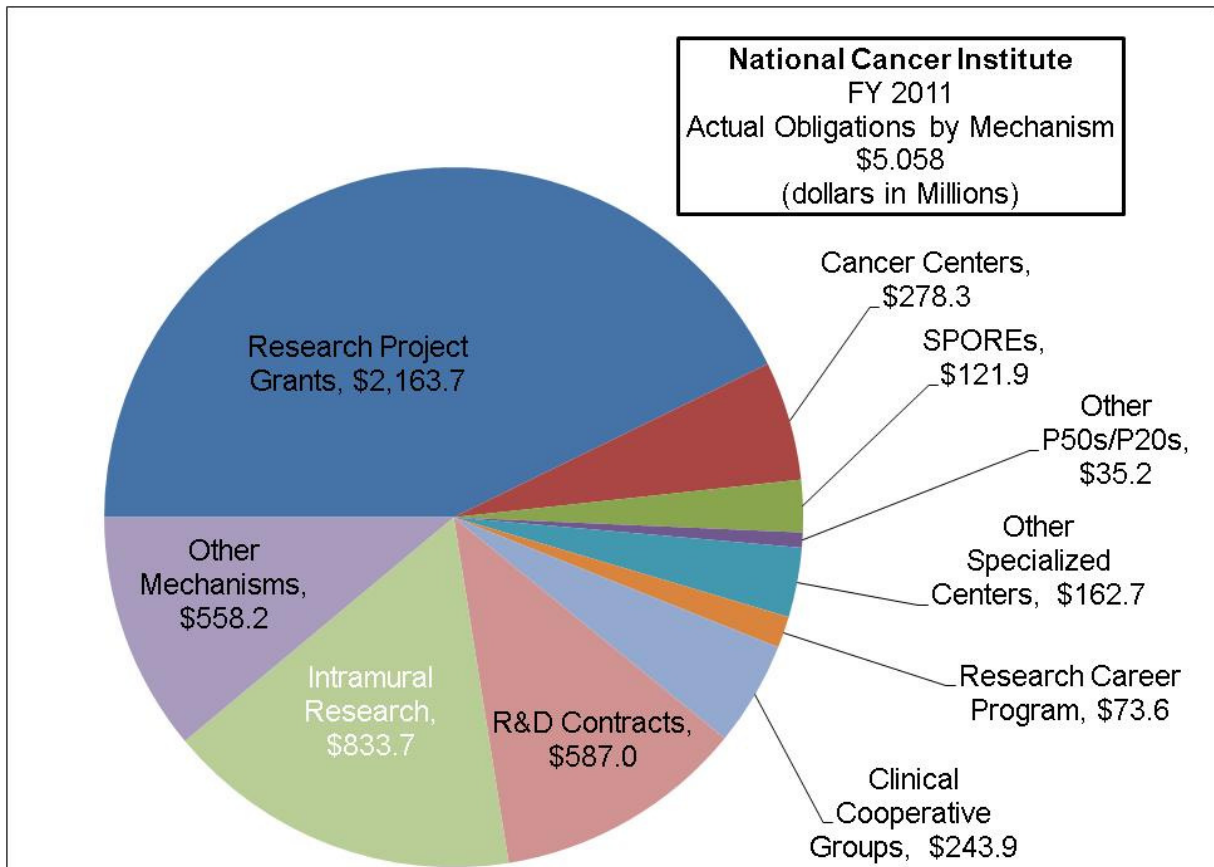
Percent Share of Total NCI Dollars

Summary Points

- The mechanism shares of the total budget have remained relatively stable from FY 2007 to FY 2011, taking into account the elimination of Cancer Prevention and Control as a budget mechanism in FY 2009

Percent Share of Total NCI Dollars					
	2007	2008	2009	2010	2011
Research Project Grants	44.1%	43.3%	43.0%	42.5%	42.8%
Cancer Centers	5.7%	5.7%	5.8%	5.8%	5.5%
SPOREs	2.6%	2.6%	2.6%	2.6%	2.4%
Specialized Centers	1.6%	1.6%	2.3%	2.8%	3.2%
Other P50s/P20s	-	-	0.6%	0.8%	0.7%
Clinical Cooperative Groups	3.1%	3.0%	4.7%	5.0%	4.8%
R&D Contracts	8.7%	9.2%	12.3%	12.0%	11.6%
Intramural Research	14.7%	14.9%	15.7%	15.8%	16.5%
Cancer Prevention & Control*	10.4%	9.9%	0.0%	0.0%	0.0%
Other Mechanisms	9.2%	9.9%	13.0%	12.7%	12.5%

*Cancer Prevention and Control Eliminated as a Budget Mechanism in FY09.



Funding Trends

Summary Points

- The NCI budget has increased by \$265.5 million – or 5.5% – since FY 2007.

	Historical Funding Trends				
	(Dollars in Millions)				
	2007	2008	2009	2010	2011
Total NCI	\$4,792.6	\$4,827.6	\$4,967.0	\$5,098.1	\$5,058.1
Research Project Grants	2,111.8	2,089.9	2,134.0	2,168.1	2,163.7
Cancer Centers	273.2	274.5	285.6	295.9	278.3
SPOREs	123.8	123.3	131.4	133.8	121.9
Other P50s/P20s	-	-	28.1	38.8	35.2
Other Specialized Centers	74.7	79.3	116.4	142.7	162.7
Clinical Cooperative Groups	148.2	144.0	234.5	254.5	243.9
R&D Contracts	416.9	444.2	610.1	613.8	587.0
Intramural Research	706.2	718.4	781.4	805.3	833.7
*Cancer Prevention & Control	498.4	471.5	-	-	-
Other Mechanisms	439.4	482.5	645.5	645.4	631.8

	% Growth by Mechanism				
	2007 to 2008	2008 to 2009	2009 to 2010	2010 to 2011	2007 to 2011
Total NCI	0.7%	2.9%	2.6%	-0.8%	5.5%
Research Project Grants	-1.0%	2.1%	1.6%	-0.2%	2.5%
Cancer Centers	0.5%	4.0%	3.6%	-5.9%	1.9%
SPOREs	-0.4%	6.6%	1.8%	-8.9%	-1.6%
Other P50s/P20s	-	-	100.0%	-9.3%	100.0%
Specialized Centers	6.2%	46.8%	22.6%	14.0%	117.7%
Clinical Cooperative Groups	-2.8%	62.8%	8.5%	-4.2%	64.6%
R&D Contracts	6.5%	37.3%	0.6%	-4.4%	40.8%
Intramural Research	1.7%	8.8%	3.1%	3.5%	18.1%
*Cancer Prevention & Control	-5.4%	-100.0%	-	-	-100.0%
Other Mechanisms	9.8%	33.8%	0.0%	-2.1%	43.8%

*Cancer Prevention and Control Elimated as a Budget Mechanism in FY09.

Research Project Grants

Summary Points

- About half of competing dollars supported grants awarded within the established payline and half supported grants as an exception to the payline.
- RFA funds accounted for 7.6% of FY 2011 competing dollars.
- Research Project Grant applications submitted to NCI increased by approximately 10%.
- A total of 1,106 competing RPG's were funded.

Research Project Grants*				
(Dollars in Thousands)				
	2010		2011	
	No.	Amount	No.	Amount
Total funding for RPGs	5,078	\$2,169,058	5,019	\$2,163,681
SBIR/STTR	207	\$85,669	144	\$84,054
Funding for RPGs without SBIR/STTR Program	4,871	\$2,082,389	4,875	\$2,079,627
Continuation or noncompeting grants funded				
Competing grants funded	1,253	\$516,598	1,106	\$424,494
Administrative Supplements	258	\$29,022	206	\$23,619
Partial assessment for DHHS Program Evaluation		\$75,329		\$75,329
Funds set aside within competing dollars for:				
Grants within Paylines:	1,134	\$468,594	588	\$188,865
Traditional R01	726	\$284,237	338	\$138,517
Program Projects (P01)	26	\$53,174	-	-
RFA Grants	95	\$65,168	68	\$32,131
Share of competing grant funds		12.6%		7.6%
Exception Grants	119	\$48,004	474	\$217,335
Share of competing grant funds		9.3%		51.2%
Competing Application Requests	7,338	\$3,065,725	8,037	\$3,336,074
Funding Success Rate		20.2%		13.8%
Percentile funding for R01 grants		15th		7th
Average Cost-Competing		\$412		\$384
Average Reduction from recommended/requested levels		-17%		-17%

*EXCLUDES projects awarded with Stamp Out Breast Cancer funds.

Grant Funding Paylines

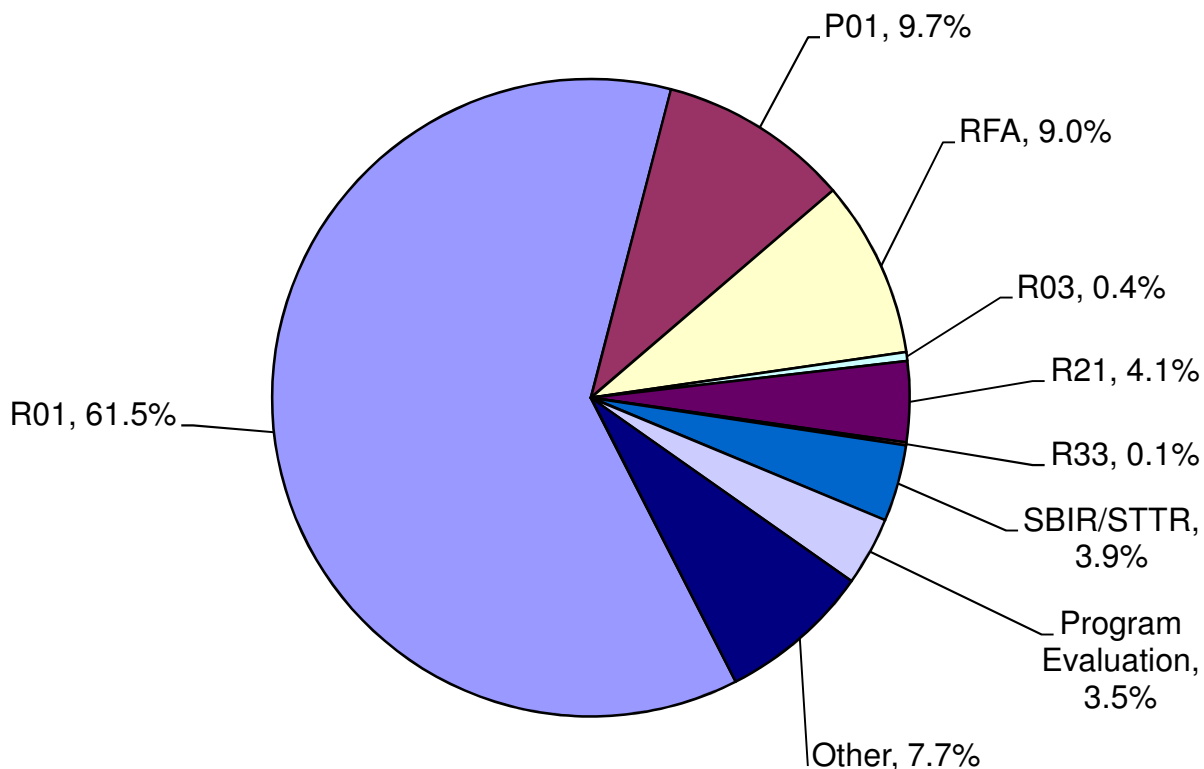
RPG Mechanisms:	2010**	2011	
R01 Traditional Grants	15th	7th	percentile
P01 Program Projects*	N/A	N/A	priority score
R03 Small Grants	30	25	priority score
R21 Exploratory Phase I	15th	7th	percentile
R33 Exploratory Phase II	17	Case by Case	priority score
R41/R42 STTR	29	20	priority score
R43/R44 SBIR	29	24	priority score

* Formal paylines for P01 grants are determined by the Executive Committee

** In FY 2010, NIH instituted a new peer review scoring system resulting in a two digit priority score. More information on the new system is available under "Peer Review Process" online at:

<http://grants.nih.gov/grants/oer.htm>

National Cancer Institute FY 2011 % Share of Total RPG Funds

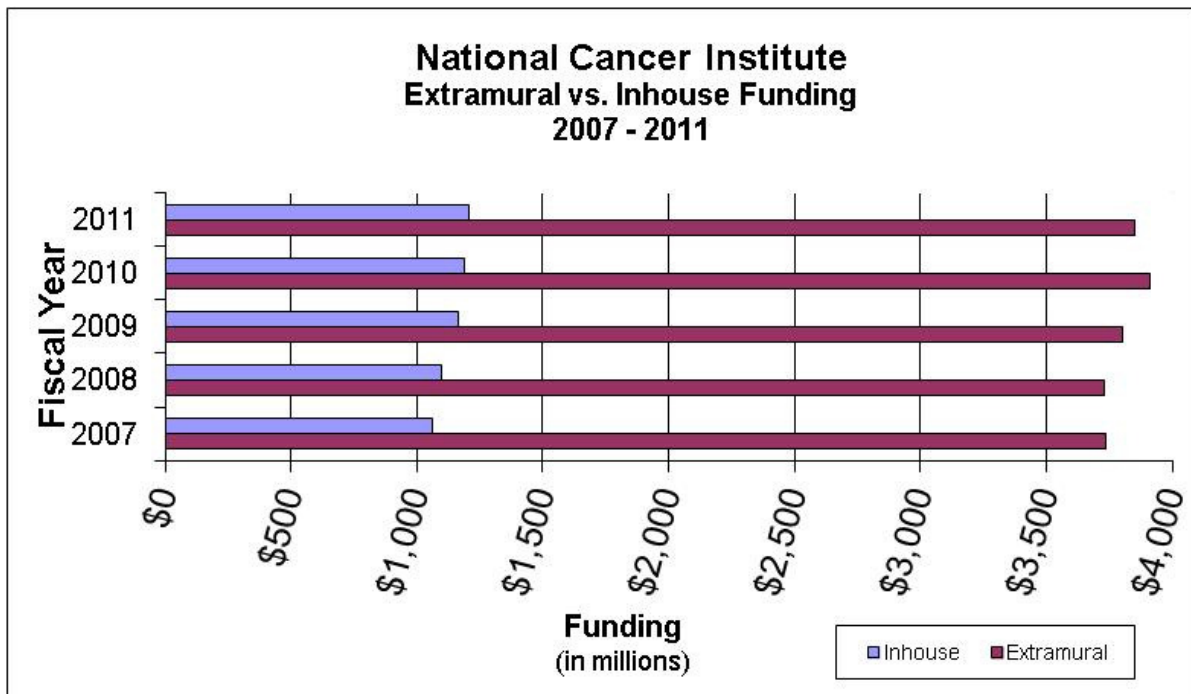


**National Cancer Institute
Extramural vs. Inhouse Funding**
(dollars in millions)

Mechanism	Extramural					
	2007	2008	2009	2010	2011	07 - 11% chg.
Research Project Grants	\$2,111.8	\$2,089.9	\$2,137.0	\$2,168.1	\$2,163.7	2.5%
Cancer Centers	273.2	274.5	285.6	295.9	278.3	1.9%
SPOREs	123.8	123.3	131.4	133.8	121.9	-1.5%
Other P50s/P20s	-	-	28.1	38.8	35.2	100.0%
Other Specialized Centers	74.7	79.3	116.4	142.7	162.7	117.8%
Other Research Grants	322.9	317.8	417.3	442.5	425.5	31.8%
NRSA	68.2	69.9	70.1	67.6	67.7	-0.7%
R&D Contracts	416.9	444.2	610.1	613.8	587.0	40.8%
Cancer Control Grants*	200.1	190.4	-	-	-	-100.0%
Cancer Control Contracts*	133.7	134.8	-	-	-	-100.0%
Construction	-	-	-	-	-	0.0%
Buildings & Facilities	7.9	7.9	7.9	7.9	7.9	0.0%
Total Extramural Funds	3,733.2	3,732.0	3,803.9	3,911.0	3,849.9	3.1%

Mechanism	Inhouse					
	2007	2008	2009	2010	2011	07-11% chg.
Intramural Research	\$706.2	\$718.4	\$781.4	\$805.3	\$833.7	18.1%
RMS	188.7	231.0	384.6	381.8	374.5	98.5%
Control Inhouse*	164.5	146.3	-	-	-	-100.0%
Total Inhouse Funds	1,059.4	1,095.7	1,166.0	1,187.1	1,208.2	14.0%
Total NCI	4,792.6	4,827.7	4,969.9	5,098.1	5,058.1	5.5%

*Cancer Prevention and Control Elimated as a Budget Mechanism in FY09.



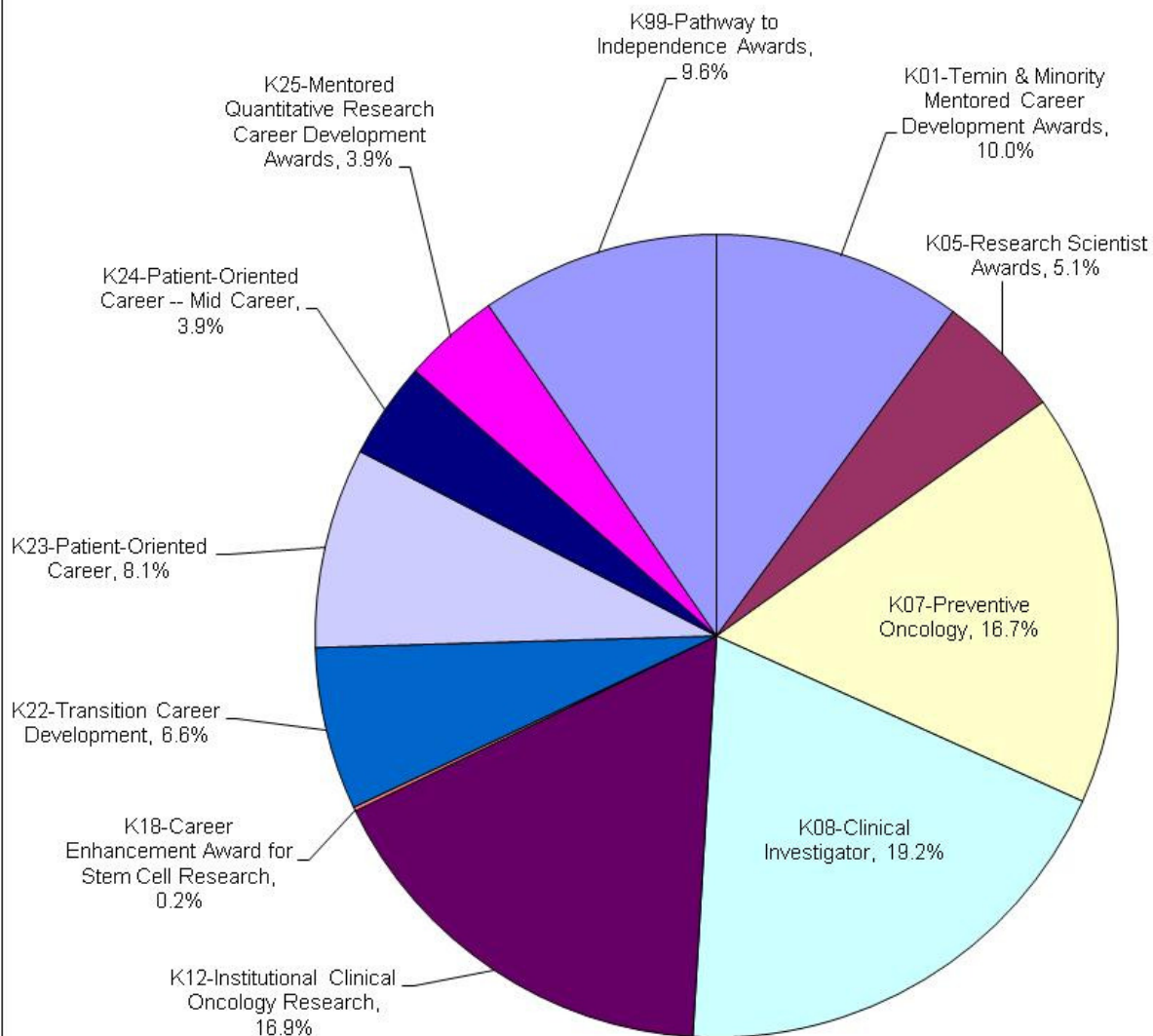
Research Career Awards – “K” Program

Summary Points

- The Research Career Award mechanism decreased by 1.7% in FY 2011.
- The number of Research Career Awards decreased by 14 between FY 2010 and FY 2011.
- NCI funded 56 awards for the NIH Pathway to Independence program.

		(Dollars in Thousands)			
		2010		2011	
		No.	Amount	No.	Amount
K01	Temin Awards	30	\$4,520	8	\$1,110
K01	Minority Mentored Career Development Award	47	6,303	48	6,265
	Subtotal, K01s	77	10,823	56	7,375
K05	Research Scientist Award	21	3,134	25	3,741
K07	Preventive Oncology	97	13,278	88	12,257
K08	Clinical Investigator	83	12,407	91	14,129
K12	Institutional Clinical Oncology Research	18	12,922	18	12,424
K18	Career Enhancement Award for Stem Cell Research	0	0	1	117
K22	Transition Career Development	30	4,963	28	4,827
K23	Patient-Oriented Career	40	5,812	38	5,937
K24	Patient-Oriented Career -- Mid Career	20	3,422	16	2,860
K25	Mentored Quantitative Research Career Development Award	25	3,311	21	2,868
K30	Institutional Curriculum Awards -- Administered by NCRR	0	0	0	0
K99	NIH Pathway to Independence Awards	41	4,842	56	7,080
	Total Research Career Program	452	74,914	438	73,615

National Cancer Institute FY 2011 % of Total Research Award Funds



Research Dollars by Various Cancers

Summary Points

- Funding for various cancers listed below may overlap
- Funding for cancers listed below do not represent the entire NCI budget
- Based on NCI Coding Methodology.

Research Dollars by Various Cancers (Dollars in Millions)					
	2007	2008	2009	2010	2011
Total NCI	\$4,792.6	\$4,827.6	\$4,966.9	\$5,098.1	\$5,058.1
AIDS	253.7	258.5	265.9	272.1	270.0
Brain & Central Nervous System	148.2	153.7	151.5	156.8	172.6
Breast Cancer	572.4	586.8	599.4	631.2	625.1
Cervical Cancer	82.4	76.8	70.8	77.0	81.4
Clinical Trials	843.7	853.2	882.8	852.3	877.8
Colorectal Cancer	258.4	273.7	264.1	270.4	265.1
Head and Neck	66.2	76.1	77.1	62.7	61.8
Hodgkin's Disease	16.5	17.5	18.2	14.6	13.4
Leukemia	205.5	216.4	220.5	239.7	227.0
Liver Cancer	67.7	74.2	69.0	72.6	66.2
Lung Cancer	226.9	247.6	246.7	281.9	296.8
Melanoma	97.7	110.8	103.7	102.3	115.6
Multiple Myeloma	32.3	41.5	45.2	48.5	54.9
Non Hodgkin's Lymphoma	113.0	122.6	131.3	122.4	126.4
Ovarian Cancer	96.9	100.0	110.1	112.3	110.8
Pancreatic Cancer	73.3	87.3	89.6	97.1	99.5
Prostate Cancer	296.1	285.4	285.1	300.5	288.3
Stomach Cancer	12.0	12.4	15.4	14.5	13.4
Uterine Cancer	16.6	17.1	18.0	14.2	15.9

National Cancer Institute

Director's Biography **Harold Varmus, M.D.**

Harold Varmus became Director of the National Cancer Institute on July 12, 2010.

Harold Varmus, co-recipient of the Nobel Prize for studies of the genetic basis of cancer, served 10 years as President of Memorial Sloan-Kettering Cancer Center and six years as Director of the National Institutes of Health. He is a member of the U.S. National Academy of Sciences and the Institute of Medicine and is involved in several initiatives to promote science and health in developing countries. The author of over 350 scientific papers and five books, including a recent memoir titled The Art and Politics of Science, he was a co-chair of President Obama's Council of Advisors on Science and Technology, was a co-founder and Chairman of the Board of the Public Library of Science, and chaired the Scientific Board of the Gates Foundation Grand Challenges in Global Health.

Former Directors of the National Cancer Institute

John E. Niederhuber, M.D.
June 2006 – September 2006 (Acting)
September 2006 – July 2010

John E. Niederhuber, M.D., became Director of the National Cancer Institute (NCI), one of the National Institutes of Health, in September 2006. He joined NCI in a full-time capacity in September 2005, as Deputy Director for Translational and Clinical Sciences, and within a few weeks was asked to serve as Chief Operating Officer. He officially became NCI's Acting Director in June 2006. Dr. Niederhuber has also served as the Chair of the National Cancer Advisory Board, as an external NCI advisor and grant reviewer, and as a laboratory investigator supported by NCI and the NIH.

Andrew C. von Eschenbach, M.D.
January 2002 – September 2005

Andrew C. von Eschenbach, M.D. became the 12th NCI in January 2002. He previously directed the Genitourinary Cancer Center and the Prostate Cancer Research Program at The University of Texas M.D. Anderson Cancer Center and held the Roy M. and Phyllis Gough Huffington Clinical Research Distinguished Chair in Urologic Oncology.

Richard D. Klausner, M.D.
August 1995 – September 2001

Dr. Klausner was appointed as the Director of the NCI on August 1, 1995. From 1984 until 1997 he was Chief of the Cell Biology and Metabolism Branch of the National Institute of Child Health & Human Development.

Samuel Broder, M.D.
December 1988 – March 1995

Dr. Broder joined NCI in 1972 as a Clinical Associate in the Metabolism Branch. In 1981, he became Associate Director for NCI's Clinical Oncology Program.

Vincent T. DeVita, Jr., M.D.
January 1980 – June 1980 (Acting)
July 1980 – August 1988

Dr. DeVita joined NCI in 1963 as a Clinical Associate in the Laboratory of Chemical Pharmacology. He served NCI as head of the Solid Tumor Service, Chief of the Medicine Branch, Director of the Division of Cancer Treatment and Clinical Director prior to his appointment as Director of NCI.

Arthur Canfield Upton, M.D.
July 1977 – December 1979

Prior to his tenure as NCI Director, Dr. Upton served as Dean of the School of Basic Health Sciences at the State University of New York at Stony Brook.

Frank Joseph Rauscher, Jr., Ph.D.
May 1972 – October 1976

Dr. Rauscher served as Scientific Director for Etiology, NCI, prior to his appointment as Director of NCI in 1972.

Carl Gwin Baker, M.D.
November 1969 – July 1970 (Acting)
July 1970 – April 1972

During his tenure with PHS, Dr. Baker served as Scientific Director for Etiology, NCI, and as Acting Director of NCI prior to his appointment as Director in July 1970.

Kenneth Milo Endicott, M.D.
July 1960 – November 1969

Dr. Endicott served as Chief of the Cancer Chemotherapy National Service Center, PHS, and as Associate Director, NIH, prior to being appointed Director of NCI in July 1960.

John Roderick Heller, M.D.
May 1948 – June 1960

Dr. Heller joined PHS in 1934 and became Chief of the Venereal Disease Division prior to his appointment as Director of NCI in 1948.

Former Directors of the National Cancer Institute (continued)

Leonard Andrew Scheele, M.D.
July 1947 – April 1948

Dr. Scheele served in various capacities during his tenure with PHS prior to his appointment as Assistant Chief and, subsequently, Director of NCI in July 1947.

Roscoe Roy Spencer, M.D.
August 1943 – July 1947

Dr. Spencer became NCI's first Assistant Chief and, subsequently, was appointed Director of the Institute in 1943.

Carl Voegtlin, Ph.D.
January 1938 – July 1943

Dr. Voegtlin served as Professor of Pharmacology and Chief of the Division of Pharmacy at the Hygienic Laboratory prior to becoming the first Director of NCI in 1938.

National Cancer Advisory Board (NCAB)

Membership and Term

Chairperson

- 2012* Bruce A. Chabner, M.D.
Massachusetts General Hospital Cancer Center
Massachusetts General Hospital
Boston, MA 02114
- 2012* Anthony Atala, M.D.
Wake Forest Institute for Regenerative Medicine
Department of Urology
Wake Forest University School of Medicine
Winston-Salem, NC 27157
- 2014* Victoria L. Champion, D.N.S.
Center for Research & Scholarship
Indiana University School of Nursing
Indianapolis, IN 46202
- 2012* Donald S. Coffey, Ph.D.
Departments of Urology/Oncology/Pathology
Pharmacology and Molecular Science
Johns Hopkins University School of Medicine
Baltimore, MD 21287
- 2016* Marcia R. Cruz-Correa, M.D., Ph.D.
University of Puerto Rico
Basic and Translational Science Director
University of Puerto Rico
Comprehensive Cancer Center
San Juan, Puerto Rico
- 2016* Kevin J. Cullen, M.D.
Marlene and Stewart Greenebaum Cancer Center
University of Maryland
Professor of Medicine
University of Maryland
Baltimore, MD 21201
- 2014* William H. Goodwin, Jr.
CCA Industries, Inc.
Richmond, VA 23219
- 2014* Waun Ki Hong, M.D.
Department of Thoracic/Head & Neck
Medical Oncology
The University of Texas M.D. Anderson
Cancer Center
Houston, TX 77030
- 2012* Mr. Robert A. Ingram
Hatteras Venture Partners
Durham, NC 27701
- 2016* Tyler E. Jacks, Ph.D.
Koch Institute for Integrative Cancer Research
Massachusetts Institute of Technology
Cambridge, MA 02157
- 2012* Judith S. Kaur, M.D.
Native American Programs
Mayo Comprehensive Cancer Center
Department of Medical Oncology
Mayo Clinic
Rochester, MN 55905
- 2014* Mary Vaughan Lester
University of California
San Francisco Foundation
Los Angeles, CA 99024
- 2014* H. Kim Lyerly, M.D.
Duke University School of Medicine
Durham, NC 27705
- 2012* Karen M. Meneses, Ph.D.
School of Nursing
University of Alabama at Birmingham
Birmingham, AL 35294
- 2016* Olufunmilayo I. Olopade, M.B.B.S., F.A.C.P.
Center for Clinical Cancer Genetics
University of Chicago
Pritzker School of Medicine
Chicago, IL 60637

National Cancer Advisory Board (Continued)

2014 Jennifer A. Pietenpol, Ph.D.
Vanderbilt-Ingram Cancer Center
Vanderbilt University Medical Center
Nashville, TN 37232

2016 Jonathan M. Samet, M.D., M.S.
Keck School of Medicine
Institute for Global Health
University of Southern California
Los Angeles, CA 90089

2016 William R. Sellers, M.D.
Novartis Institutes for BioMedical Research, Inc.
Cambridge, MA 02139

Executive Secretary
Paulette S. Gray, Ph.D.

Committee Management Officer
Ms. Claire L. Harris

Ex Officio Members

Linda S. Birnbaum, Ph.D., D.A.B.T., A.T.S.
Director
National Institute of Environmental Health
Sciences and The National Technology Program
National Institutes of Health
Research Triangle Park, NC

Francis S. Collins, M.D., Ph.D.
Director
National Institutes of Health
Bethesda, MD

Margaret A. Hamburg, M.D.
Commissioner
Food and Drug Administration
Silver Spring, MD

John P. Holdren, Ph.D.
Science Advisor to the President
Director
Office of Science and Technology Policy
Executive Office of the President
Washington, DC

John Howard, M.D., M.P.H., J.D., LL.M.
Director
National Institute for Occupational Safety and Health
Washington, DC

Lisa Jackson, M.S.
Administrator
Environmental Protection Agency
Washington, DC

The Honorable Dr. Michael J. Kussman
Under Secretary for Health
Veterans Health Administration
Department of Veterans Affairs
Washington, DC

Anna Palmisano, Ph.D.
Associate Director, Office of Biological and
Environmental Research
Department of Energy
Washington, DC

The Honorable Kathleen Sebelius, M.P.A.
Secretary
Department of Health and Human Services
Washington, DC

The Honorable Hilda L. Solis
Secretary
Department of Labor
Washington, DC

Inez Tenenbaum, M.Ed.
Chairman
Consumer Product Safety Commission
Bethesda, MD

Jonathan Woodson, M.D.
Assistant Secretary of Defense for Health Affairs
The Pentagon
Washington, DC

National Cancer Advisory Board (Continued)

Alternates to Ex Officio Members

Michael A. Babich, Ph.D.
Directorate for Epidemiology and Health Sciences
Consumer Product Safety Commission
Bethesda, MD
(Ms. Inez Tenenbaum- CPSC)

Patricia Bray, M.D., M.P.H.
Acting Director, Office of Occupational Medicine
OSHA / Department of Labor
Washington, DC
(The Honorable Hilda L. Solis– DOL)

Michael Kelley, M.D., F.A.C.P.
National Program Director for Oncology
Veterans Health Administration
Department of Veterans Affairs
Durham, NC
(The Honorable Dr. Michael J. Kussman)

Aubrey Miller, M.D.
Senior Medical Officer
National Institute of Environmental Health
Sciences
National Institutes of Health
Bethesda, MD
(Linda S. Birnbaum, Ph.D., D.A.B.T., A.T.S.- NIEHS)

Richard Pazdur, M.D.
Division Director
Division of Oncology Drugs
Food and Drug Administration
Rockville, MD
(Margaret A. Hamburg, M.D. - FDA)

John F. Potter, M.D.
Director
United States Military Cancer Institute
Walter Reed Army Medical Center
Washington, DC
(Jonathan Woodson, M.D. - DHA)

R. Julian Preston, Ph.D.
Associate Director for Health
Environmental Protection Agency
Research Triangle Park, NC
(Lisa Jackson, M.S. - EPA)

Michael Stebbins, Ph.D.
Assistant Director, Biotechnology
Office of Science and Technology Policy
Executive Office of the President
Washington, DC
(John P. Holdren, Ph.D. –OSTP)

Marie H. Sweeney, Ph.D., M.P.H.
Chief
Surveillance Branch
Division of Surveillance
Hazard Evaluations & Field Studies,
National Institute for Occupational Safety
and Health
Cincinnati, Ohio
(John Howard, M.D., M.P.H., J.D., LL.M.- NIOSH)

Lawrence A. Tabak, D.D.S., Ph.D.
Principal Deputy Director
National Institutes of Health
Bethesda, MD
(Francis S. Collins, M.D., Ph.D.)

Sharlene Weatherwax, Ph.D.
Director
Biological Systems Sciences Division
Office of Biological and Environmental Research
Office of Science
U.S. Department of Energy
Washington, DC
(Anna Palmisano, Ph.D. - DOE)

Note: Bold print represents Ex Officio Members

National Cancer Advisory Board (Continued)

NCAB Subcommittee Assignments

Subcommittee on Activities and Agenda

Dr. Bruce Chabner - Chair
Dr. Victoria Champion
Mr. Robert Ingram
Dr. Kim Lyerly
Dr. Karen Meneses
Executive Secretary: Dr. Paulette Gray
(301) 496-5147

Subcommittee on Cancer Centers

Dr. Jennifer Pietenpol - Chair
Dr. Victoria Champion
Mr. William Goodwin
Dr. Judith Kaur
Dr. Karen Meneses
Dr. William Sellers
Executive Secretary: Dr. Linda Weiss
(301) 496-8531

Subcommittee on Clinical Investigations

Dr. Waun Ki Hong - Chair
Dr. Anthony Atala
Dr. Marcia Cruz-Correa
Mr. William Goodwin
Dr. Judith Kaur
Ms. Mary Lester
Dr. Jonathan Samet
Dr. William Sellers
Executive Secretary: Dr. Jeff Abrams
(301) 496-2522

Subcommittee on Planning and Budget

Mr. William Goodwin - Chair
Dr. Marcia Cruz-Correa
Dr. Kevin Cullen
Dr. Kim Lyerly
Dr. Olufunmilayo Olopade
Executive Secretary: TBD

Subcommittee on Special Actions

Dr. Karen Meneses - Chair
Committee of the Whole
Executive Secretary: Dr. Paulette Gray
(301) 496-5147

Ad hoc Subcommittee on Biomedical Technology

Dr. Donald Coffey - Chair
Dr. Anthony Atala
Ms. Mary Lester
Dr. Olufunmilayo Olopade
Dr. Jennifer Pietenpol
Dr. William Sellers
Executive Secretary: Dr. Carolyn Compton
(301) 496-1550

Ad hoc Subcommittee on Communications

Dr. Victoria Champion - Chair
Dr. Marcia Cruz-Correa
Dr. Kevin Cullen
Mr. Robert Ingram
Dr. Judith Kaur
Ms. Mary Lester
Dr. Kim Lyerly
Dr. Jonathan Samet
Executive Secretary: Dr. Lenora Johnson
(301) 451-6879

Ad hoc Subcommittee on Experimental Therapeutics

Dr. William Sellers - Chair
Mr. William Goodwin
Dr. Waun Ki Hong
Dr. Kim Lyerly
Dr. Jennifer Pientenpol
Executive Secretary: Dr. Joseph Tomaszewski
(301) 496-6711

Ad hoc Subcommittee on Facilitation of Industry Interactions

Dr. Bruce Chabner – Chair
Dr. Anthony Atala
Mr. William Goodwin
Dr. Waun Ki Hong
Mr. Robert Ingram
Dr. Judith Kaur
Dr. Kim Lyerly
Dr. Olufunmilayo Olopade
Executive Secretary: Mr. Eric Hale
(301) 496-1148

Ad Hoc Subcommittee on Global Cancer Research

Dr. Olufunmilayo Olopade - Chair
Dr. Anthony Atala
Dr. Marcia Cruz-Correa
Dr. Kevin Cullen
Dr. Kim Lyerly
Dr. Karen Meneses
Dr. Jonathan Samet
Executive Secretary: Dr. Ted Trimble
(301) 496-2522

Board of Scientific Counselors Intramural Programs

Clinical Sciences and Epidemiology

Appointees	Expiration of Appointment	Appointees	Expiration of Appointment
Chair - Ethan Dmitrovsky, M.D.	2013		
Edgar Ben-Josef, M.D.	2014	David Poplack, M.D.	2014
Arthur W. Blackstock, Jr., M.D.	2016	Nancy Roach	2013
Bruce R. Blazar, M.D.	2012	Thomas Rohan, M.D., Ph.D.	2014
Tim Byers, M.D.	2015	Thomas A. Sellers, Ph.D.	2013
Susan Chang, M.D.	2013	Darryl Shibata, M.D.	2015
William Evans, Pharm.D.	2012	Robert K. Tigelaar, M.D.	2013
Jo L. Freudenheim, Ph.D.	2012	Walter J. Urba, M.D., Ph.D.	2013
Judy E. Garber, M.D.	2012	Elizabeth Ward, Ph.D.	2014
Marc T. Goodman, Ph.D.	2015	George Wilding, M.D.	2016
Bernard Harlow, Ph.D.	2014	Cheryl L. Willman, M.D.	2015
Carl June, M.D.	2014		
Karen Kelly, M.D.	2015	Executive Secretary - Brian Wojcik, Ph.D.	
Hongzhe Lee, Ph.D.	2016		
Alexandra M. Levine, M.D.	2015		
Sanford Markowitz, M.D., Ph.D.	2016		
Augusto Ochoa, M.D.	2014		
Kenneth Offit, M.D., M.P.H.	2016		
Raphael E. Pollack, M.D., Ph.D., F.A.C.S.	2016		

Basic Sciences

Chair - Joan W. Conaway, Ph.D.	2015		
Paul D. Bieniasz, Ph.D.	2014	A. Thomas Look, M.D.	2013
John C. Cambier, Ph.D.	2015	Ian Macara, Ph.D.	2014
Lawrence Corey, M.D.	2014	Nita J. Maihle, Ph.D.	2012
Sara A. Courtneidge, Ph.D.*	2016	Suzanne Ostrand-Rosenberg, Ph.D.	2014
Norman Drinkwater, Ph.D.	2014	Ann Marie Pendergast, Ph.D.	2012
Nelson Fausto, M.D.	2012	Thomas L. Poulos, Ph.D.	2015
Errol Friedberg, M.D.	2014	James H. Prestegard, Ph.D.	2013
Joanna Groden, Ph.D.	2016	Kenneth L. Rock, M.D.	2015
Daria J. Hazuda, Ph.D.	2015	James A. Wells, Ph.D.	2016
Eric Hunter, Ph.D.	2015	Wayne M. Yokoyama, M.D.*	2016
Chris M. Ireland, Ph.D.	2013	Virginia A. Zakian, Ph.D.	2015
Alexandra L. Joyner, Ph.D.	2016		
Marcelo G. Kazanietz, Ph.D.	2015	Executive Secretary - Florence E. Farber, Ph.D.	
Robert E. Lewis, Ph.D.	2016		
Jonathan D. Licht, M.D.	2014	* Newly appointed member pending personnel	

Board of Scientific Advisors Extramural Programs

Chair - Todd R. Golub, M.D.	2012		
Francis Ali-Osman, D.Sc.	2016	Joe W. Gray, Ph.D.	2013
Christine B. Ambrosone, Ph.D.	2012	Mary J. C. Hendrix, Ph.D.	2012
Sangeeta N. Bhatia, M.D., Ph.D.	2016	Timothy J. Kinsella, M.D.	2012
Andrea Califano, Ph.D.	2013	Joshua LaBaer, M.D., Ph.D.	2014
Michael A. Caligiuri, M.D.	2012	Theodore S. Lawrence, M.D., Ph.D.	2016
Arul M. Chinnaiyan, M.D., Ph.D.	2015	Mr. Donald Listwin	2014
Curt I. Civin, M.D.	2012	Maria E. Martinez, Ph.D., M.P.H.	2015
Chi V. Dang, M.D., Ph.D.	2014	James L. Omel, M.D.	2012
Ronald A. DePinho, M.D.	2015	Luis F. Parada, Ph.D.	2016
Robert B. Diasio, M.D.	2013	Stuart L. Schreiber, Ph.D.	2012
Jeffrey A. Drebin, M.D., Ph.D., F.A.C.S.	2014	Lincoln Stein, M.D., Ph.D.	2016
Brian J. Druker, M.D.*	2016	Bruce W. Stillman, Ph.D.	2012
Karen M. Emmons, Ph.D.	2016	Victor J. Strecher, Ph.D. MPH	2012
Betty Ferrell, Ph.D., RN, F.A.A.N.	2015	Louise C. Strong, M.D.	2013
Kathleen M. Foley, M.D.	2013	Frank M. Torti, M.D., M.P.H.	2014
Sanjiv S. Gambhir, M.D., Ph.D.	2012	Gregory L. Verdine, Ph.D.*	2016
Stanton L. Gerson, M.D.	2016	Irving L. Weissman, M.D.	2012
		Executive Secretary - Paulette S. Gray, Ph.D.	

* Newly appointed member pending personnel

President's Cancer Panel

Barbara K. Rimer, DrPH, MPH 2012
Dean and Alumni Distinguished Professor
Gillings School of Global Public Health
The University of North Carolina at Chapel Hill
Chapel Hill, NC 27599

Owen N. Witte, M.D. 2014
Director
Eli and Edythe Broad Center of Regenerative
Medicine and Stem Cell Research
Investigator, Howard Hughes Medical Institute
University of California, Los Angeles
Los Angeles, CA 90095

Member 2012
(Vacant)

Abby B. Sandler, Ph.D.
Executive Secretary
Chief, NCI Institute Review Office
6116 Executive Blvd.
Suite 220, MSC 8349
Bethesda, MD 20892-8349

Scientific Program Leaders (SPL) Members

Harold Varmus, M.D.
Director

Douglas Lowy, M.D.
Deputy Director

Jeff Abrams, M.D.
Acting Director for Clinical Research, Division of
Cancer Treatment and Diagnosis

Alan S. Rabson, M.D.
Deputy Director

Robert T. Croyle, Ph.D.
Director, Division of Cancer Control and Population
Sciences

Dinah S. Singer, Ph.D.
Director, Division of Cancer Biology

John Czajkowski
Deputy Director for Management

Sanya A. Springfield, Ph.D.
Director, Center to Reduce Cancer Health Disparities

James H. Doroshow, M.D.
Deputy Director for Clinical and Translational Research

Joseph Tomaszewski, Ph.D.
Acting Director for Preclinical Research, Division of
Cancer Treatment and Diagnosis

Joseph F. Fraumeni, Jr., M.D.
Director, Division of Cancer Epidemiology and Genetics

Ted Trimble, M.D., MPH
Director, Center for Global Health

Paulette S. Gray, Ph.D.
Director, Division of Extramural Activities

Michael Weingarten
Director, SBIR Development Center

Peter Greenwald, M.D., Dr.Ph
Associate Director for Prevention

Linda Weiss, Ph.D.
Director, Cancer Centers

Lee Helman, M.D.
Scientific Director for Clinical Research, CCR

Jonathan Wiest, Ph.D.
Director, Center for Cancer Training

George Komatsoulis
Acting Director, Center for Biomedical Informatics
and Information Technology

Robert H. Wiltout, Ph.D.
Director, Center for Cancer Research

Barnett S. Kramer, M.D., MPH
Director, Division of Cancer Prevention

Robert Yarchoan, M.D.
Director, Office of HIV & AIDS Malignancy

Joy Wisznauckas
Executive Secretary

Clinical Trials and Translational Research Advisory Committee (CTAC)

Membership and Term

- Chair**
- 2012 James L. Abbruzzese, M.D., F.A.C.P.**
Chairman
Department of Gastrointestinal Medical Oncology
The University of Texas M.D. Anderson Cancer Center
Houston, TX
- 2013 Peter C. Adamson, M.D.**
Chair, Children's Oncology Group
Chief, Division of Clinical Pharmacology & Therapeutics
The Children's Hospital of Philadelphia
University of Pennsylvania
Philadelphia, PA
- 2014 Susan G. Arbuck, M.D., M.Sc., F.A.C.P.**
President
Susan G. Arbuck, M.D., LLC
Potomac, MD
- 2014 Monica M. Bertagnolli, M.D.**
Professor of Surgery Harvard Medical School
Brigham & Women's Hospital
Dana-Farber Cancer Institute
Boston, MA
- 2013 Susan G. Braun (DCLG)**
Executive Director
Commonwealth
Bolinas, CA
- 2012 Curt Civin, M.D. (BSA)**
Associate Dean of Research
Professor of Pediatrics
Director
Center for Stem Cell Biology and Regenerative Medicine
University of Maryland School of Medicine
Baltimore, MD
- 2012 Kenneth H. Cowan, M.D., Ph.D.**
Director
Eppley Institute for Cancer Research
University of Nebraska Medical Center
Omaha, NE
- 2015 Kevin J. Cullen, M.D. (NCAB)**
Director
University of Maryland Greenebaum Cancer Center
Baltimore, MD
- 2015 Nancy E. Davidson, M.D.**
Director
University of Pittsburgh Cancer Institute
University of Pittsburgh
Pittsburgh, PA
- 2013 Olivera J. Finn, Ph.D.**
Distinguished Professor and Chair
University of Pittsburgh School of Medicine
Pittsburgh, PA
- 2015 J. Phillip Kuebler, M.D., Ph.D.**
Principal Investigator
Columbus Oncology Associates, Inc.
Columbus, OH
- 2013 Scott M. Lippman, M.D.**
Professor and Chair
Department of Thoracic/Head and Neck Medical Oncology
U. of Texas M.D. Anderson Cancer Center
Houston, TX
- 2014 Mary S. McCabe, R.N.**
Director
Cancer Survivorship Program
Memorial Sloan Kettering Cancer Center
New York, New York
- 2014 Lisa A. Newman, M.D., M.P.H., F.A.C.S.**
Professor of Surgery and Director, Breast Cancer Center and Multidisciplinary Breast Fellowship Program
U. of Michigan Comprehensive Cancer Center
Ann Arbor, MI
- 2013 Nancy Roach (BSC)**
Consumer Advocate
C3: Colorectal Cancer Coalition
Hood River, OR
- 2013 Daniel J. Sargent, Ph.D.**
Director
Cancer Center Statistics
Professor of Biostatistics
Mayo Clinic College of Medicine
Mayo Clinic Foundation
Rochester, MN
- 2013 Mitchell D. Schnall, M.D., Ph.D.**
Matthew J. Wilson Professor
University of Pennsylvania Medical Center
Philadelphia, PA
- 2014 Peter G. Shields, M.D.**
Deputy Director
Comprehensive Cancer Center
Professor
College of Medicine
The Ohio State University Medical Center
Columbus, OH

Clinical Trials and Translational Research Advisory Committee (Continued)

Membership and Term

2015 **George W. Sledge, Jr., M.D.**

Professor
Departments of Medicine and Pathology
Co-leader
Breast Cancer Program
Indiana University Cancer Center
Indianapolis, IN

2012 **Joel E. Tepper, M.D.**

Hector MacLean Distinguished Professor of Cancer
Research
Department of Radiation Oncology
University of North Carolina
Lineberger Comprehensive Cancer Center
Chapel Hill, NC

2014 **Gillian M. Thomas, M.D., FRCPC, FRCR**

Professor
Department of Radiation Oncology
Department of Obstetrics and Gynecology
University of Toronto
Odette Cancer Centre
Sunnybrook Health Sciences Centre
Toronto, Ontario, Canada

2014 **Frank M. Torti, M.D., M.P.H. (BSA)**

Vice President for Strategic Programs
Wake Forest Baptist Medical Center
Chair
Cancer Biology
Charles L. Spurr Professor of Medicine
Director

2014 **Miguel A. Villalona-Calero, M.D.**

Professor of Medical Oncology
Division of Hematology and Oncology
The Ohio State University
Columbus, OH

2015 **George J. Weiner, M.D.**

C.E. Block Chair of Cancer Research
Professor
Department of Internal Medicine
Director
Holden Comprehensive Cancer Center
Iowa City, Iowa

Executive Secretary

Sheila A. Prindiville, M.D., MPH

Ex Officio Members

James H. Doroshow, M.D.

Director
Division of Cancer Treatment and Diagnosis
National Cancer Institute
National Institutes of Health
Bethesda, MD

Paulette Gray, Ph.D.

Director
Division of Extramural Activities
National Cancer Institute
National Institutes of Health
Bethesda, MD

Rosemarie Hakim, Ph.D., M.S.

Epidemiologist
Centers for Medicare and Medicaid Services
Baltimore, MD

Lee Helman, M.D.

Chief
Pediatric Oncology Branch
Scientific Director for Clinical Research
Center for Cancer Research
National Cancer Institute
National Institutes of Health
Bethesda, MD

Michael J. Kelley, M.D., F.A.C.P.

National Program Director for Oncology
Veterans Health Administration
Department of Veterans Affairs
Washington, DC

Richard Pazdur, M.D., F.A.C.P.

Director
Division of Oncology Drug Products
U.S. Food and Drug Administration
Rockville, MD

TBD

United States Military Cancer Institute
Walter Reed Army Medical Center
Washington, DC

Alan Rabson, M.D.

Deputy Director
National Cancer Institute
National Institutes of Health
Bethesda, MD

Clinical Trials and Translational Research Advisory Committee (Continued)

Ad Hoc Subcommittee

NCI Clinical Trials Strategic Planning Ad Hoc Subcommittee

James L. Abbruzzese, M.D. (Chair)

Chairman
Department of Gastrointestinal Medical Oncology
The University of Texas M.D. Anderson Cancer Center
Houston, TX

Lori Minasian, M.D., F.A.C.P.

Acting Director
Division of Cancer Prevention
National Cancer Institute

Nancy E. Davidson, M.D.

Director
University of Pittsburgh Cancer Institute
University of Pittsburgh
Pittsburgh, PA

Executive Secretary

Sheila A. Prindiville, M.D., M.P.H.

Director
Coordinating Center for Clinical Trials
Office of the Director
National Cancer Institute
National Institutes of Health
Bethesda, MD

Nancy A. Roach (BSC)

Consumer Advocate
C3: Colorectal Cancer Coalition
Hood River, OR

Joel E. Tepper, M.D.

Hector MacLean Distinguished Professor of
Cancer Research
Department of Radiation Oncology
University of North Carolina
Lineberger Comprehensive Cancer Center
Chapel Hill, NC

George J. Weiner, M.D.

C.E. Block Chair of Cancer Research
Professor
Department of Internal Medicine
Director
Holden Comprehensive Cancer Center
Iowa City, Iowa

Ex-Officio Members

Jeffrey S. Abrams, M.D.

Associate Director
Cancer Therapy Evaluation Program
Division of Cancer Treatment and Diagnosis
National Cancer Institute
National Institutes of Health
Bethesda, MD

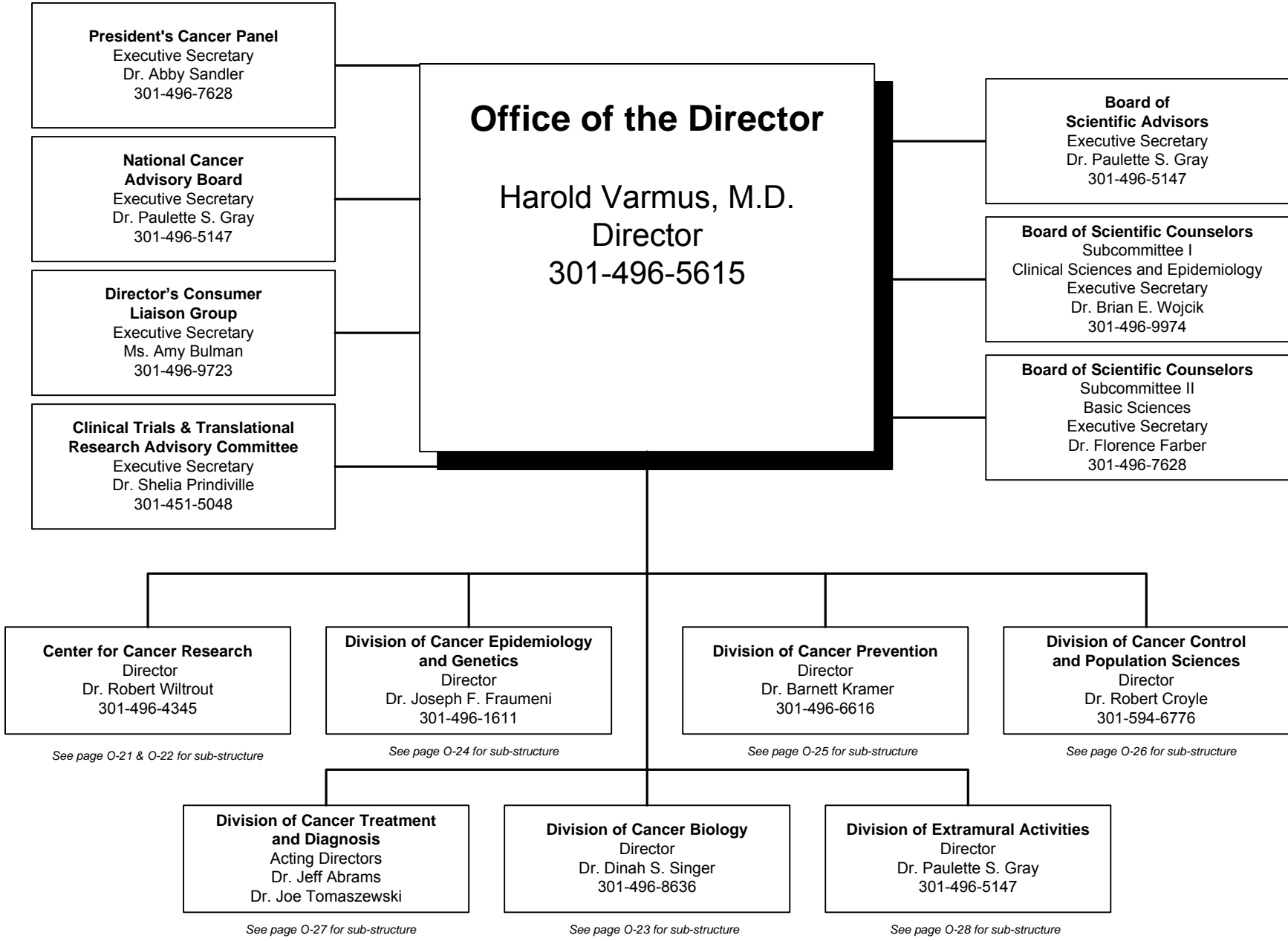
James H. Doroshow, M.D.

Deputy Director
National Cancer Institute
National Institutes of Health
Bethesda, MD

NCI Director's Consumer Liaison Group

Ms. Gwen Darien, Chair Samuel Waxman Cancer Research Foundation	2012	Dr. Michelle McMurry-Heath Food and Drug Administration	2014
Dr. Jeff Allen Friends of Cancer Research	2013	Dr. Deborah Morosini Lung Cancer Alliance	2012
Ms. Susan Braun Commonweal	2013	Ms. Phyllis Pettit Nassi University of Utah Huntsman Cancer Institute	2012
Dr. Adam Clark Leukemia & Lymphoma Society	2015	Mr. Jon Retzlaff American Association for Cancer Research	2014
Ms. Andrea Ferris LUNGevity	2015	Ms. Wendy Selig Melanoma Research Alliance	2012
Ms. Joya Delgado Harris Research Advocacy Network	2015	Mr. Josh Sommer Chordoma Foundation	2014
Ms. Linda House Cancer Support Community	2015	Mr. Max Wallace Accelerate Brain Cancer Cure	2013
Ms. Cheryl Jernigan Susan G. Komen for the Cure	2012		
Mr. Jeff Kaufman Adenoid Cystic Carcinoma Research Foundation	2015	Ms. Amy Bulman Executive Secretary Acting Director, Office of Advocacy Relations National Cancer Institute 31 Center Drive, Room 10A28 Bethesda, MD 20892-2580	

National Cancer Institute



See page O-21 & O-22 for sub-structure

See page O-24 for sub-structure

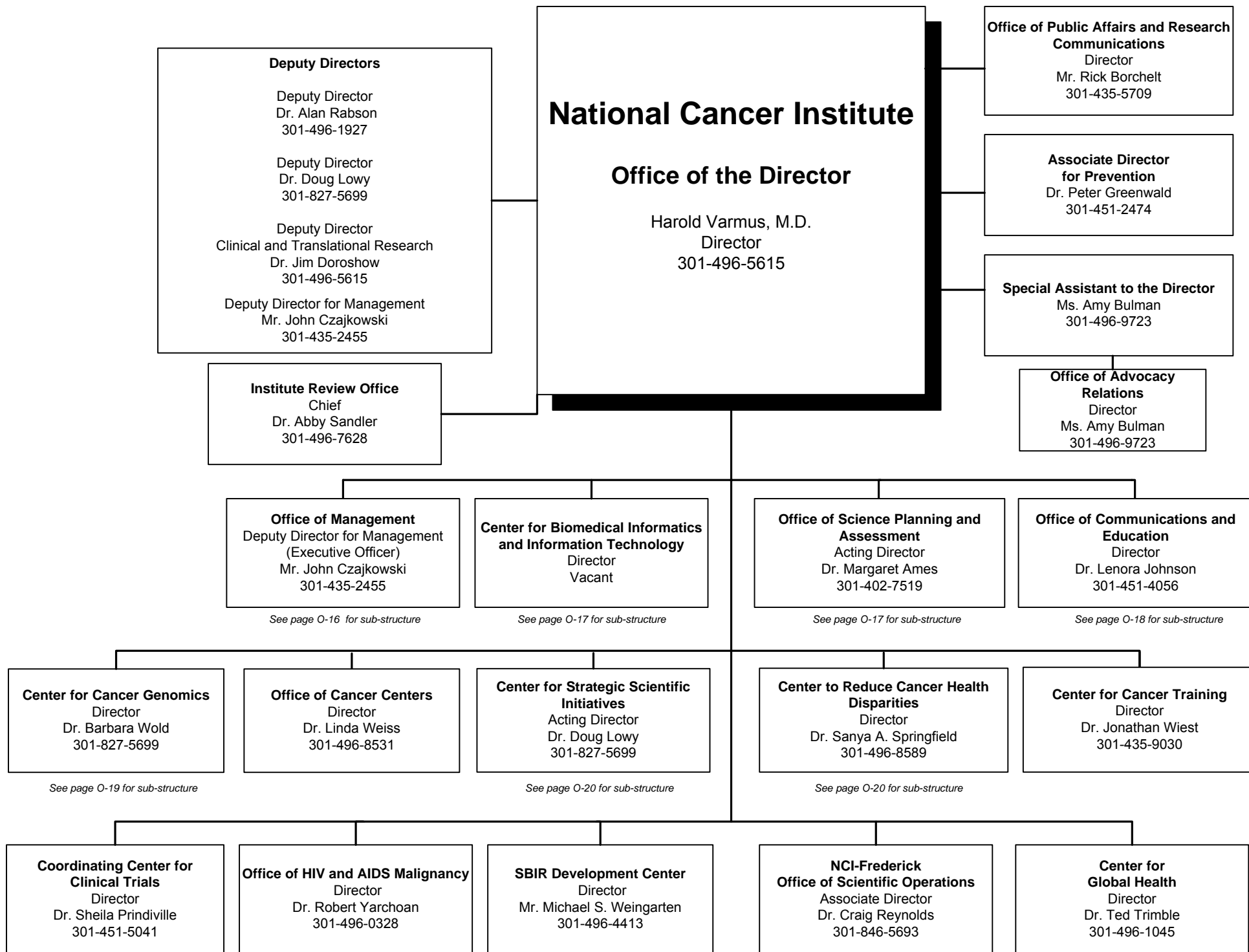
See page O-25 for sub-structure

See page O-26 for sub-structure

See page O-27 for sub-structure

See page O-23 for sub-structure

See page O-28 for sub-structure

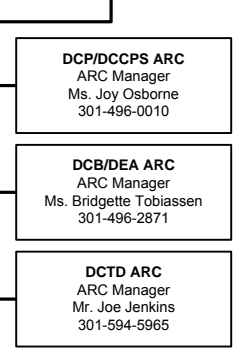
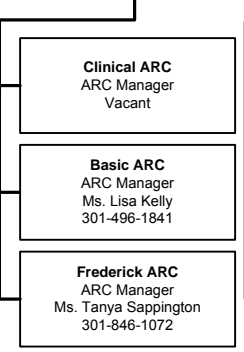
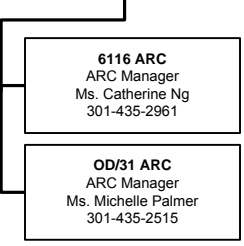
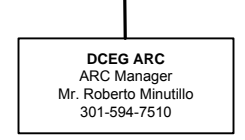
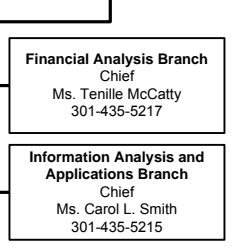
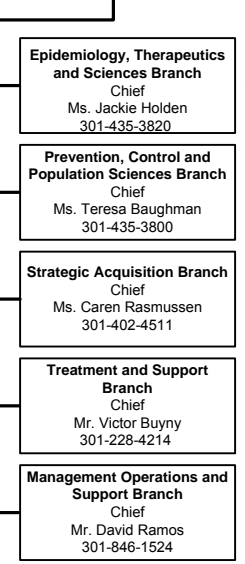
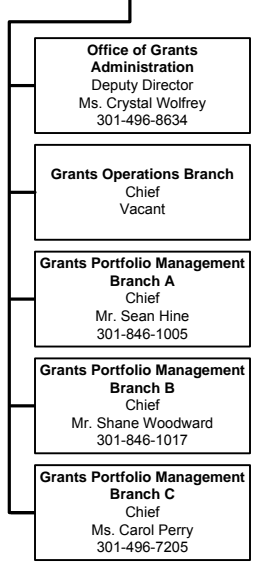
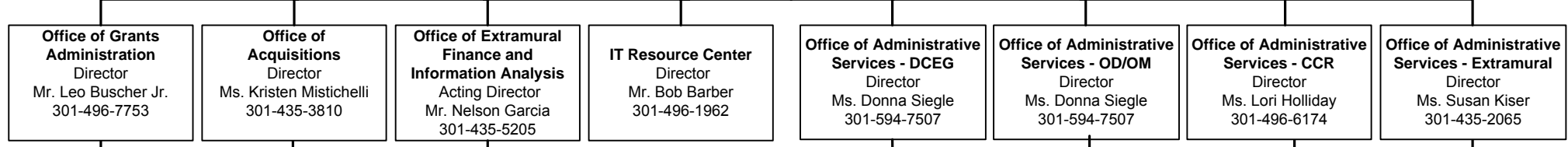
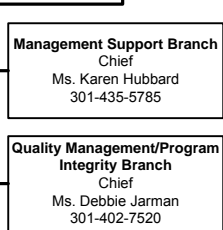
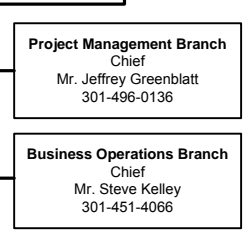
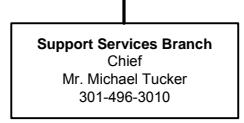
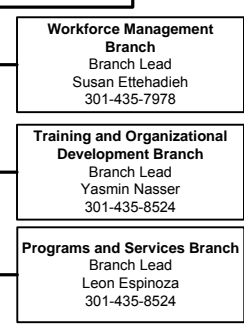
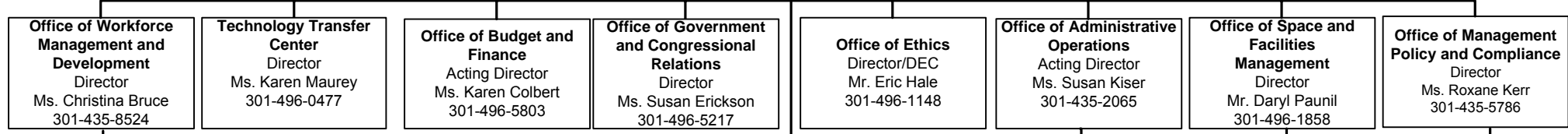


Office of Management

Deputy Director for Management
(Executive Officer)
Mr. John Czajkowski
301-435-2455

Acting Deputy Executive Officer
Ms. Anne Lubenow
301-435-7780

Employee Relations Group
Gwyn Collins
301-435-3620



**Center for Biomedical Informatics
and Information Technology**

Director
Vacant

Deputy Director
Dr. George Komatsoulis
301-451-2881

Infrastructure Branch

Chief
Mr. Eric Williams
301-594-0764

**Information Technology Support
Branch**

Chief
Vacant

Informatics Operations Branch

Chief
Dr. Caterina Lasome
301-594-1604

Resource Management Branch

Acting Chief
Dr. George Komatsoulis
301-451-2881

**Office of Science Planning and
Assessment**

Acting Director
Dr. Margaret Ames
301-402-7519

Acting Deputy Director
Dr. Lisa Stevens
301-435-3861

Women's Health

Officer
Dr. Karen Parker
301-451-9462

Science Planning Branch

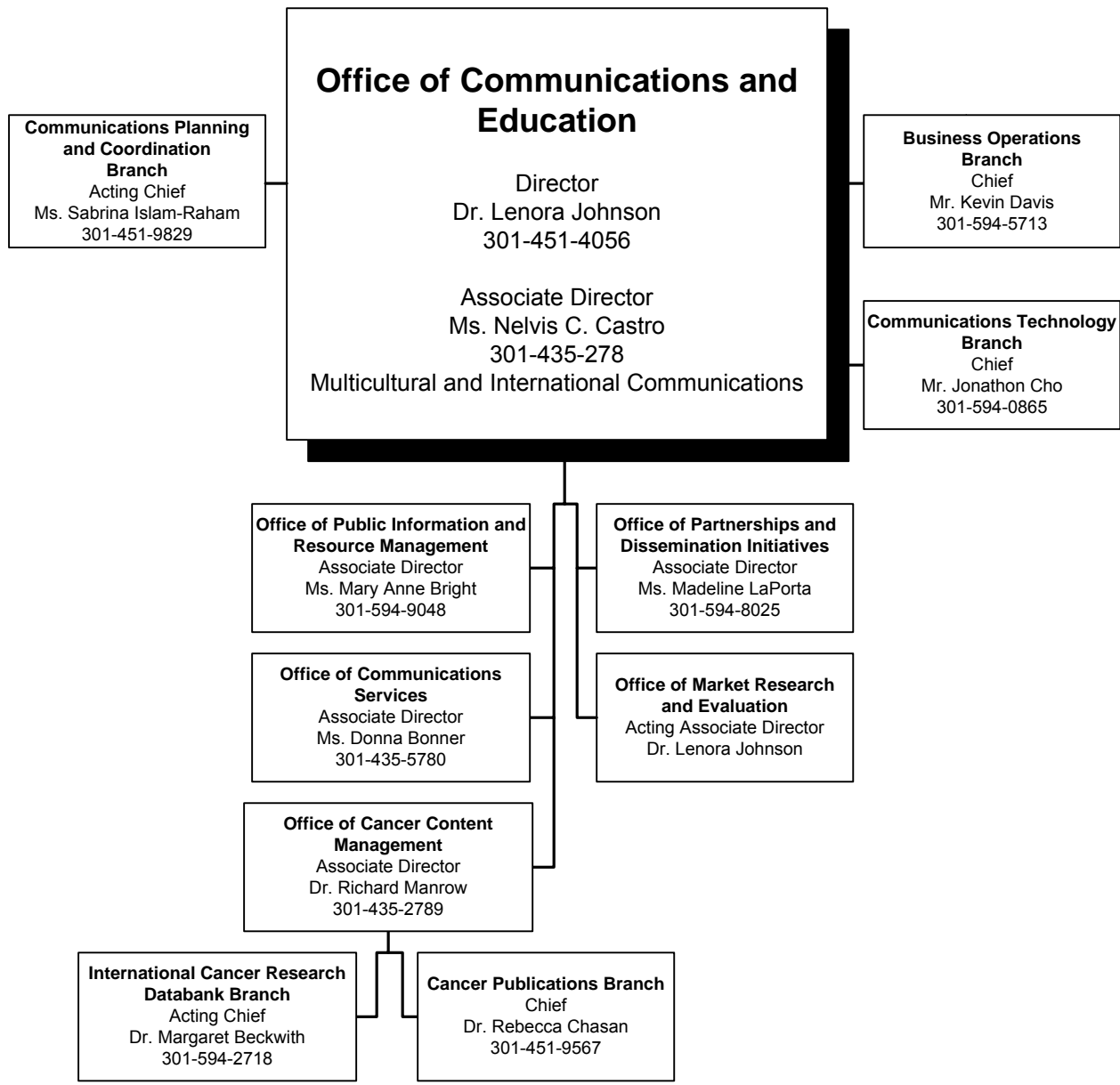
Chief
Dr. Lisa Stevens
301-435-3861

Program Assessment Branch

Chief
Dr. James Corrigan
301-435-3856

Program Implementation Branch

Chief
Vacant



Center for Cancer Genomics

Director
Dr. Barbara Wold
301-827-5699

Office of Cancer Genomics
Director
Dr. Daniela S. Gerhard
301-451-8027

**The Cancer Genome Atlas
Program Office**
Director
Dr. Kenna Shaw
301-435-3864

Center for Strategic Scientific Initiatives

Acting Director
Dr. Doug Lowy
301-827-5699

Deputy Director
Dr. Jerry Lee
301-496-1045

Office of Biorepositories and Biospecimen Research
Director
Dr. Carolyn C. Compton
301-594-2212

Knowledge Management and Special Projects Branch
Chief
Ms. Lisa Krueger
301-451-5115

Office of Cancer Nanotechnology Research
Director
Dr. Piotr Grodzinski
301-451-8983

Office of Cancer Clinical Proteomics Research
Director
Dr. Henry Rodriguez
301-451-8883

Office of Physical Sciences-Oncology
Acting Director
Dr. Larry Nagahara
301-451-3388

Center to Reduce Cancer Health Disparities

Director
Dr. Sanya Springfield
301-496-8589

Deputy Director
Dr. Deborah Duran
301-496-8589

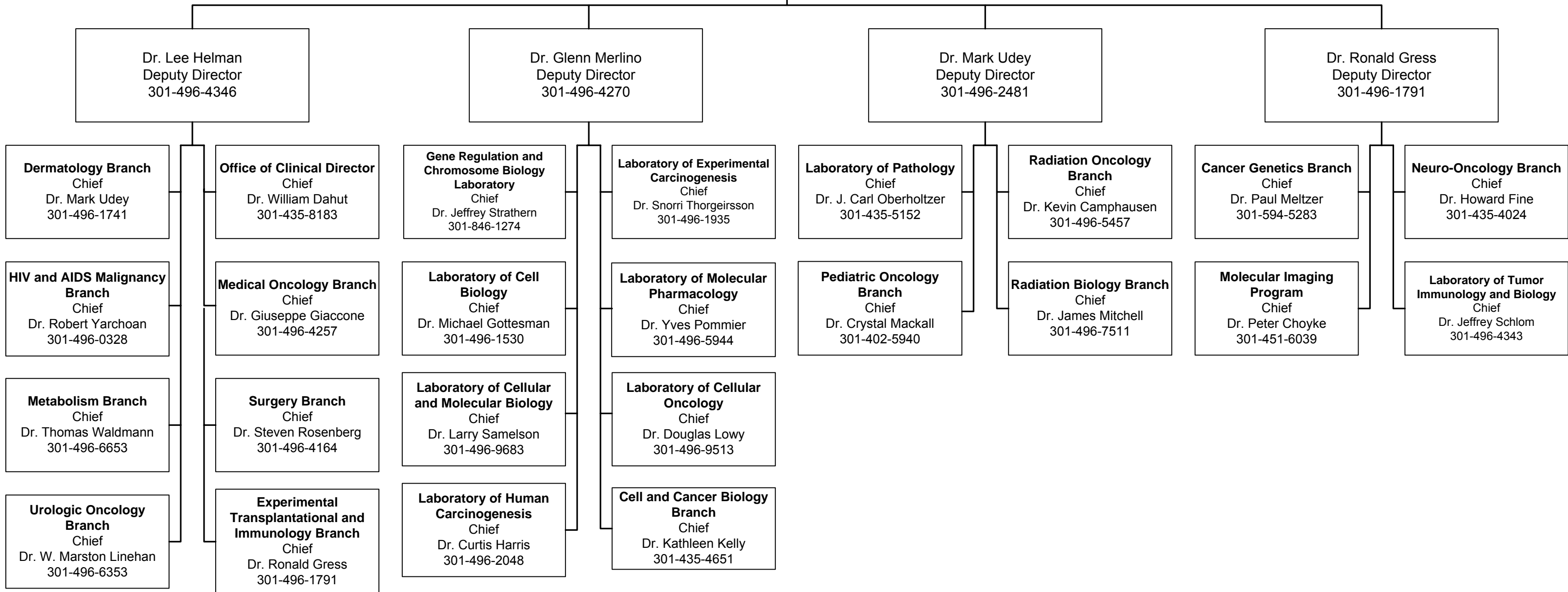
Disparities Research Branch
Chief
Dr. Avraham Rasooly
301-435-9213

Diversity Training Branch
Chief
Dr. Hector Aguila
301-496-8589

Center for Cancer Research Office of the Director

Director
Dr. Robert Wilttrout
301-496-4345

Dr. Lee Helman
Scientific Director for Clinical Research
301-496-4346



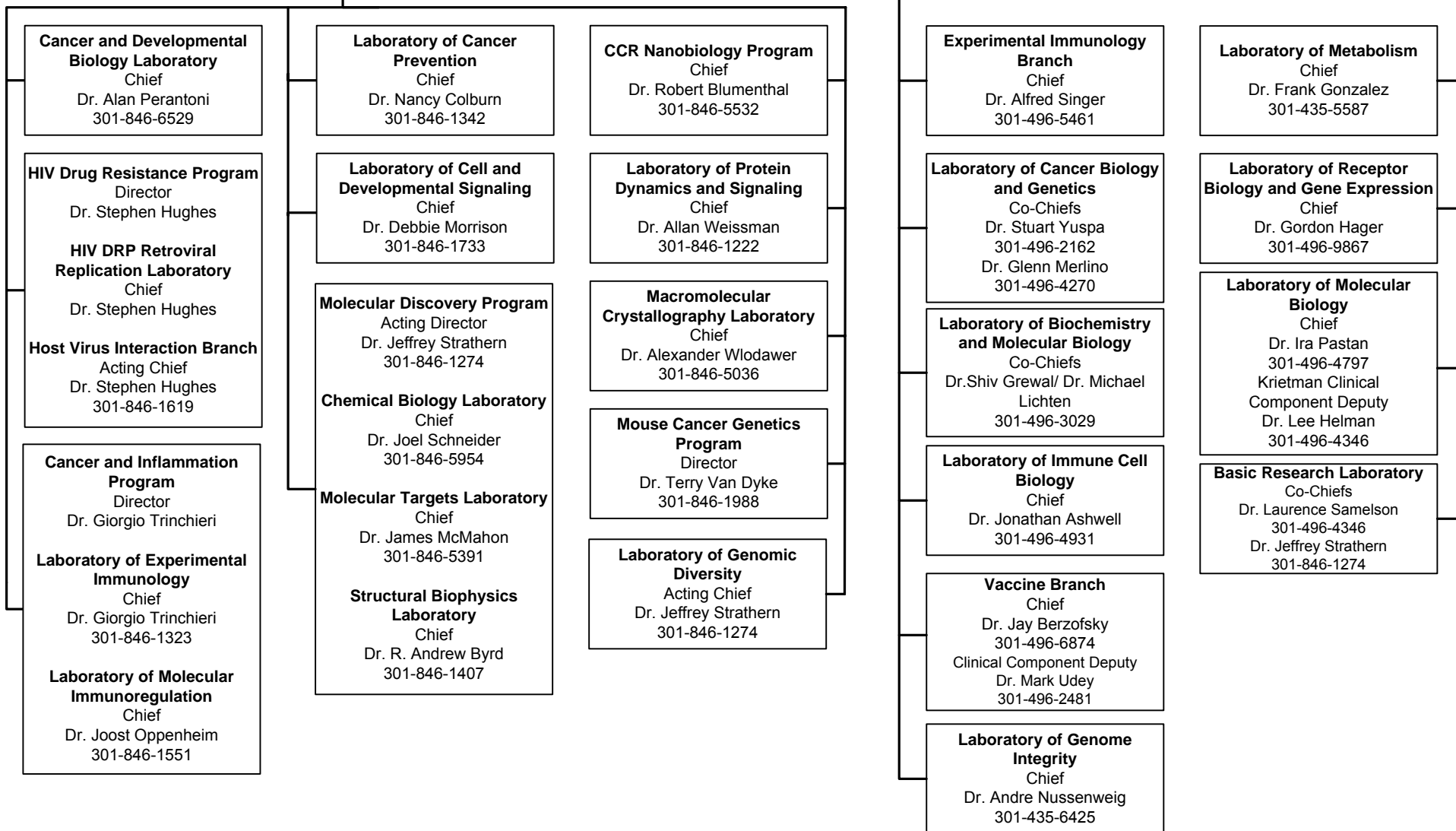
**Center for Cancer Research
Office of the Director**

Director
Dr. Robert Wilttrout
301-496-4345

Dr. Lee Helman
Scientific Director for Clinical Research
301-496-4346

Dr. Jeffrey Strathern
Deputy Director
301-846-1274

Dr. Lawrence Samelson
Deputy Director
301-496-4346



Division of Cancer Biology

Office of the Director

Director

Dr. Dinah S. Singer
301-496-8636

Deputy Director
Dr. Dan Gallahan
301-496-8636

Associate Director
Dr. Cheryl Marks
301-594-8778

Associate Director
Dr. Suresh Mohla
301-435-1878

Cancer Etiology Branch

Chief
Dr. Don Blair
301-496-9740

Cancer Immunology and Hematology Branch

Chief
Dr. R. Allan Mufson
301-496-7815

Cancer Cell Biology Branch

Chief
Dr. Barbara Spalholz
301-496-7028

Tumor Biology and Metastasis Branch

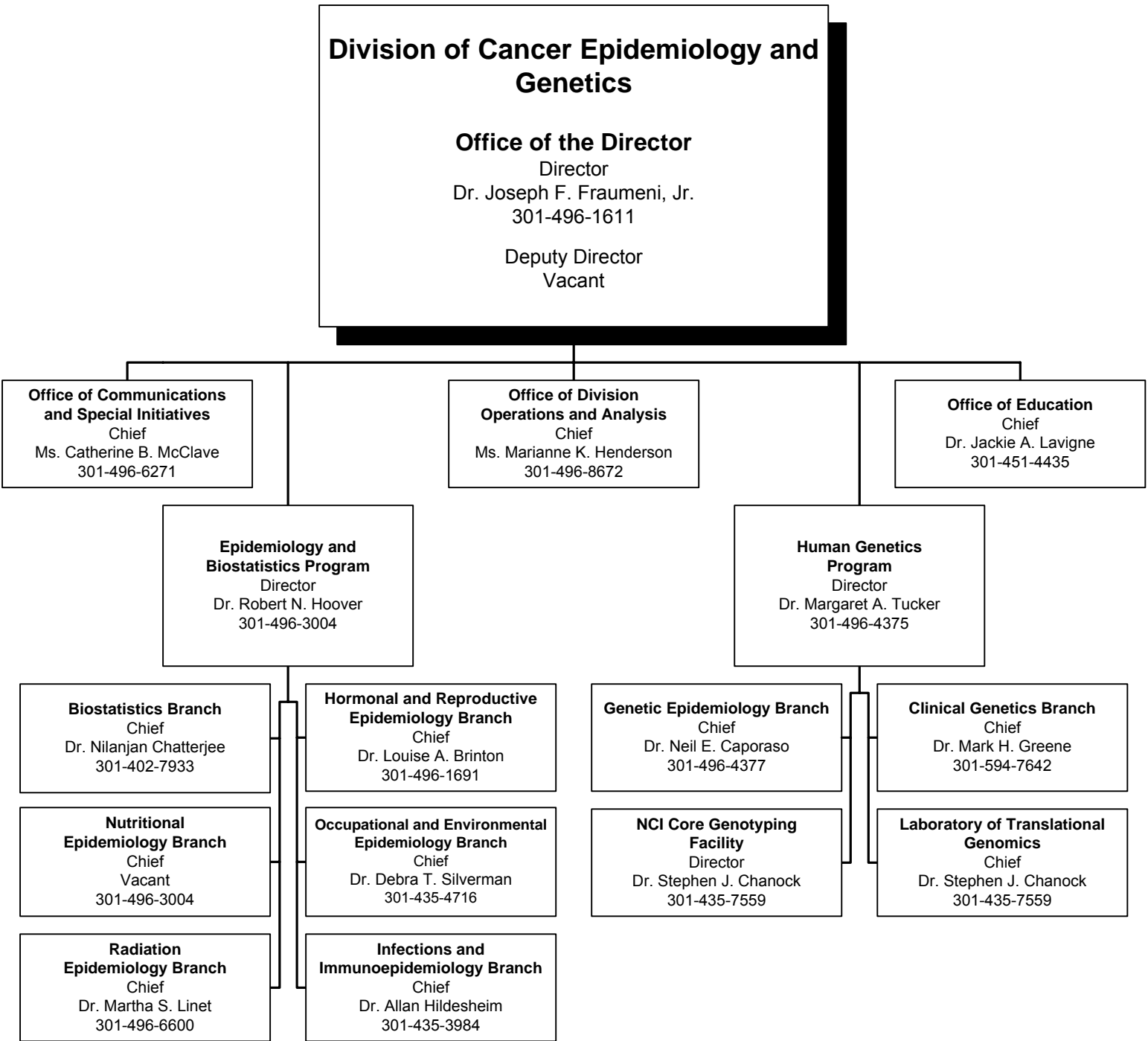
Chief
Dr. Suresh Mohla
301-435-1878

DNA and Chromosome Aberrations Branch

Chief
Dr. Judith Mietz
301-496-9326

Structural Biology and Molecular Applications Branch

Chief
Dr. Jennifer Couch
301-435-5226



Division of Cancer Prevention

Office of the Director

Director

Dr. Barnett Kramer
301-496-6616

Acting Deputy Director

Dr. Lori Minasian
301-496-8541

Associate Director for Clinical Research

Dr. Leslie G. Ford
301-496-0265



Division of Cancer Control and Population Sciences

Office of the Director

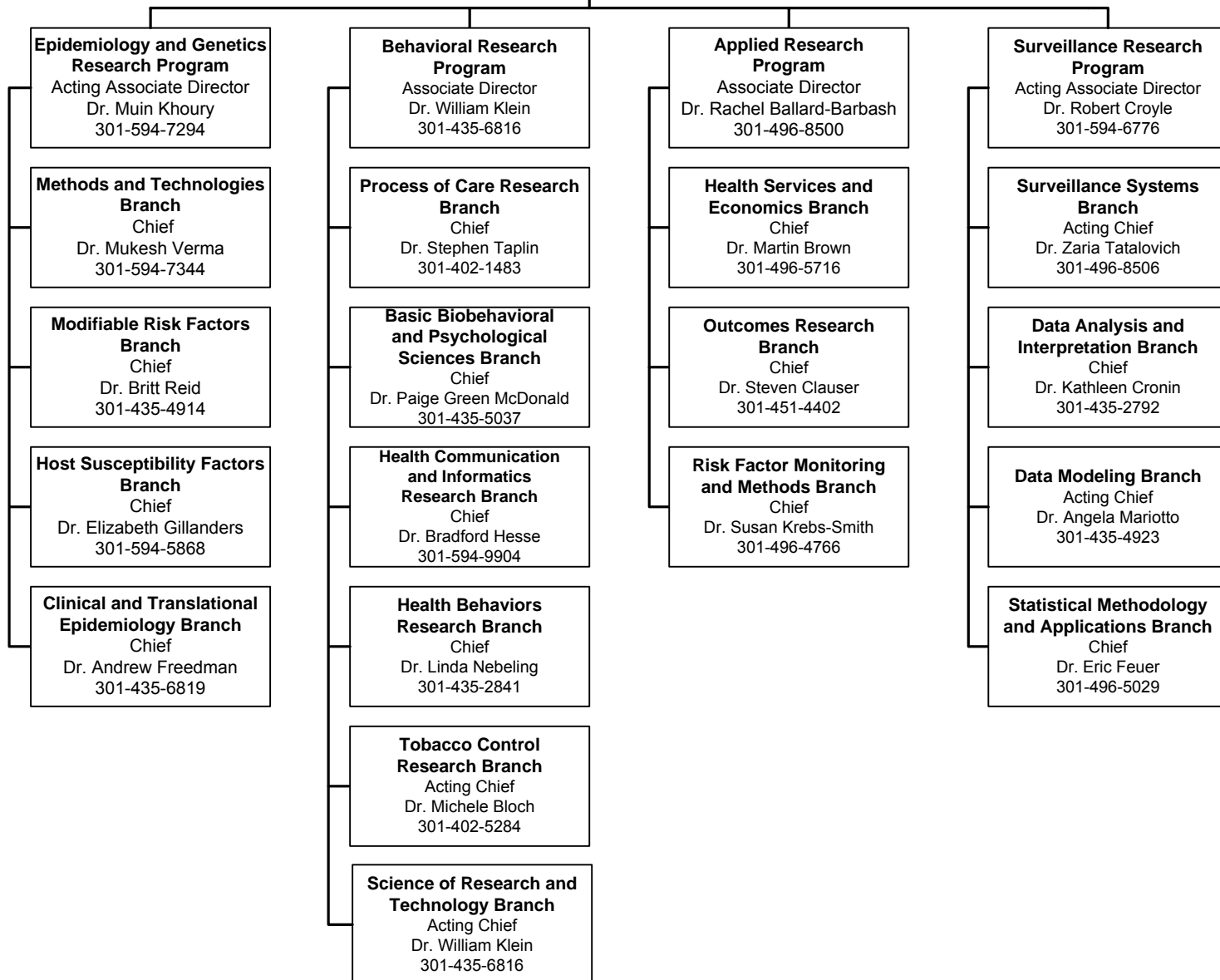
Director
Dr. Robert Croyle
301-594-6776

Deputy Director
Dr. Deborah Winn
301-594-9499

Senior Advisor for Cancer Surveillance
Dr. Brenda Edwards
301-496-8506

**Deputy Director for
Implementation Science**
Dr. Russell Glasgow
301-435-4912

**Office of Cancer
Survivorship**
Director
Dr. Julia H. Rowland
301-402-2746



Division of Cancer Treatment and Diagnosis

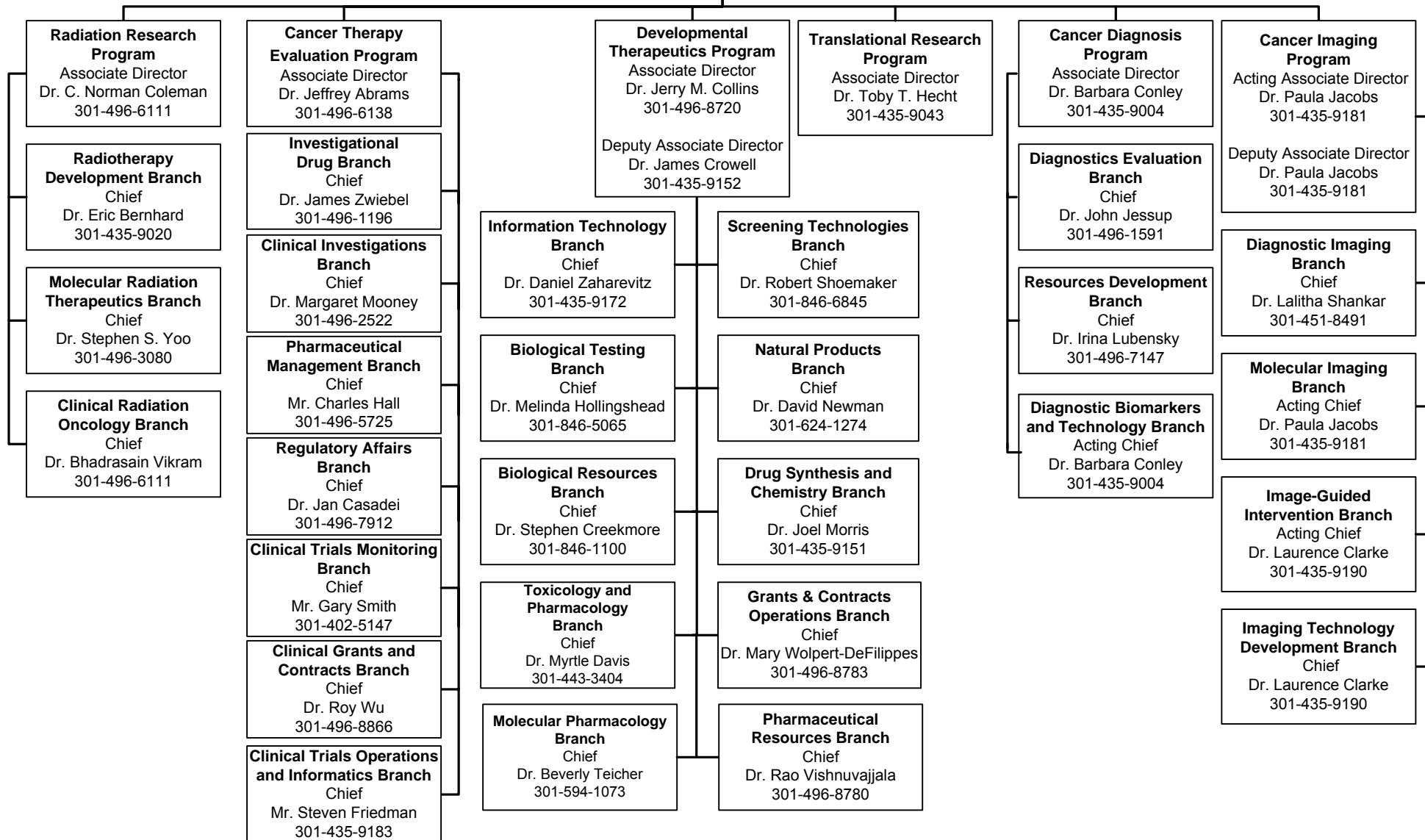
Office of the Director

Acting Director
Dr. Jeff Abrams
301-496-6138

Acting Director
Dr. Joseph Tomaszewski
301-496-6711

Biometrics Research Branch
Chief
Dr. Richard Simon
301-496-0975

**Office of Cancer
Complementary and
Alternative Medicine**
Associate Director
Dr. Jeffrey White
301-435-7980



Division of Extramural Activities

Office of the Director
Director
Dr. Paulette S. Gray
301-496-5147

Deputy Director
Vacant
301-496-5147

Assistant Director
Dr. Cedric W. Long
301-496-9138

Office of Extramural Applications
Associate Director
Dr. Amir Sahar-Khiz
301-594-1331

Program and Review Extramural Staff Training Office
Chief
Dr. Michael Small
301-402-0996

Office of Referral, Review and Program Coordination
Acting Associate Director
Dr. Shamala Srinivas
301-594-1224

Applied Information Systems Branch
Chief
Mr. Greg Fischetti
301-594-1067

Research Analysis and Evaluation Branch
Chief
Ms. Marilyn R. Gaston
301-594-1111

Research Programs Review Branch
Chief
Dr. Olivia T. Bartlett
301-594-2501

Resources and Training Review Branch
Chief
Dr. Robert E. Bird
301-496-7978

Program Coordination and Referral Branch
Chief
Dr. Christopher L. Hatch
301-594-1403

Special Review and Logistics Branch
Chief
Dr. Kirt J. Vener
301-496-7174

Links to Cancer Statistics

SOURCES:

2010 Annual Report to the Nation on the Status of Cancer, 1975-2007

Annual Report to the Nation on the Status of Cancer, 1975-2007 provides information related to incidence, death rates, and trends in the United States. Contains a special feature on trends in brain tumors and the nervous system. http://seer.cancer.gov/report_to_nation/

Fast Stats

Interactive tool providing tables, charts, and graphs with information related to incidence, mortality, survival and stage, prevalence, and lifetime risk (probability of developing or dying from cancer).

<http://seer.cancer.gov/faststats/>

SEER Cancer Statistics Review, 1975-2008

Annually updated tables and graphs displaying cancer statistics by cancer site, year of diagnosis, age, race, sex, and geography, diagnosed between 1975 and 2008. Searchable cancer statistics related to incidence, mortality, survival, prevalence, and lifetime risk.

http://seer.cancer.gov/csr/1975_2007/index.html

Cancer Stat Fact Sheets

Collection of statistical summaries for a number of common cancer types, with information related to incidence, mortality, survival, stage, prevalence, and lifetime risk.

<http://seer.cancer.gov/statfacts/>

Cancer Prevalence and Cost of Care Projections

This site is based on a study that estimates and projects the national cost of cancer care through the year 2020 separately for multiple cancer sites using the most recent available U.S. population projections, cancer incidence, survival, and cost of care data.

<http://costprojections.cancer.gov/index.html>

REPORTS:

Costs of Cancer Care, 1963-2004

http://progressreport.cancer.gov/2007/doc_detail.asp?pid=1&did=2007&chid=75&coid=726&mid=

Leading Causes of Death in the United States, 1975 and 2008

http://seer.cancer.gov/csr/1975_2008/results_merged/topic_lead_cod.pdf

Estimated New Cancer Cases and Deaths for 2011

http://seer.cancer.gov/csr/1975_2008/results_single/sect_01_table.01.pdf

Person-Years of Life Lost Due to Cancer and Average Years of Life Lost Per Person Dying of Cancer, All Races, Both Sexes, 2008

http://seer.cancer.gov/csr/1975_2008/results_merged/topic_year_lost.pdf

Incidence, Mortality, and Five-Year Relative Survival Rates by Cancer Site

http://seer.cancer.gov/csr/1975_2008/results_single/sect_01_table.04_2pgs.pdf

Annual Percent Change in Incidence and Mortality Rates, 1997-2008

http://seer.cancer.gov/csr/1975_2008/results_merged/topic_graph_trends.pdf

Age-Adjusted SEER Incidence Rates and Trends for the Top 15 Cancer Sites by Race/Ethnicity

http://seer.cancer.gov/csr/1975_2008/results_merged/topic_inc_trends.pdf

Age-Adjusted U.S. Death Rates and Trends for the Top 15 Cancer Sites by Race/Ethnicity

http://seer.cancer.gov/csr/1975_2008/results_merged/topic_mor_trends.pdf

Prevalence of Cancer: Estimated Number of Persons Diagnosed with Cancer, 5- and 32-Year Limited Duration

http://seer.cancer.gov/csr/1975_2008/results_merged/topic_prevcounts.pdf

Fiscal Year 2011 Budget

(Dollars in Thousands)

A. Actual Obligations Resulting From Appropriated Funds:

FY 2011 Appropriation	\$5,058,577
Lapse	-472
Actual Obligations Subtotal	5,058,105

B. Reimbursable Obligations:

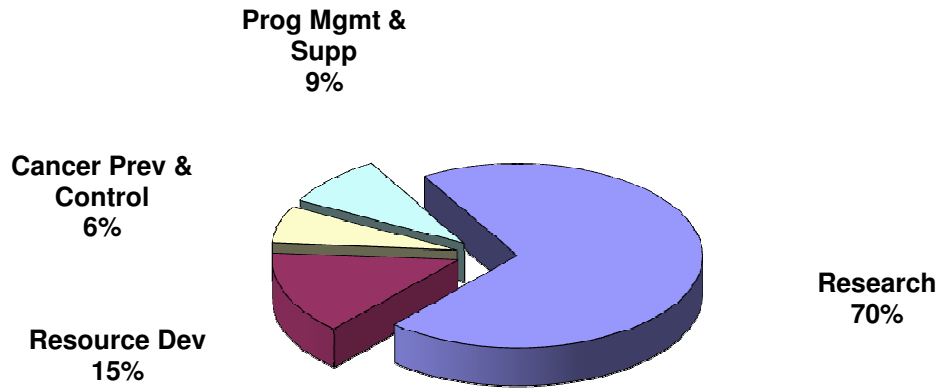
Reimbursements	27,648
-----------------------	---------------

C. Total NCI Obligations: \$5,085,753 *

*EXCLUDES projects awarded with Stamp Out Breast Cancer funds as well as royalty income (see page B-7)

Program Structure Fiscal Year 2011

(Dollars in Thousands)

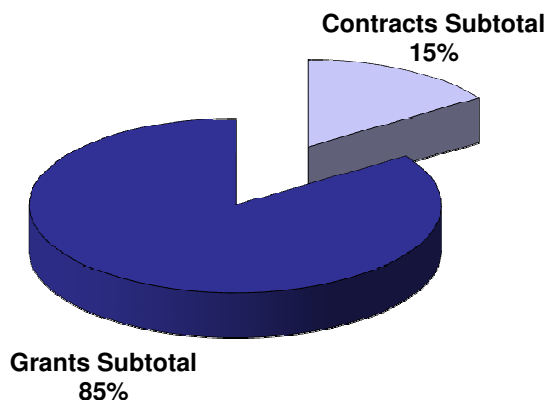


Budget Activity	Amount	Percent
Research:		
Cancer Causation	\$1,213,855	24.0%
Detection and Diagnosis Research	436,681	8.6%
Treatment Research	1,130,955	22.4%
Cancer Biology	754,254	14.9%
Subtotal Research	3,535,745	69.9%
Resource Development:		
Cancer Centers Support	558,037	11.0%
Research Manpower Development	175,280	3.5%
Buildings and Facilities	7,920	0.2%
Subtotal Resource Development	741,237	14.7%
Cancer Prevention and Control	331,338	6.5%
Program Management and Support	449,785	8.9%
*Total NCI	5,058,105	100.0%

*EXCLUDES projects awarded with Stamp Out Breast Cancer funds as well as royalty income (see page B-7)

Extramural Funds Fiscal Year 2011

(Dollars in Thousands)



Mechanism	Amount	Percent
Contracts:		
R&D Contracts	587,035	15.3%
Buildings and Facilities	7,920	0.2%
Construction Contracts	0	0.0%
Subtotal Contracts	594,955	15.5%
Grants:		
Research Project Grants	2,163,681	56.2%
Cancer Centers/Specialized Centers/SPORES	598,037	15.5%
NRSA	67,654	1.8%
Other Research Grants	425,631	11.1%
Construction Grants	0	0.0%
Subtotal Grants	3,255,003	84.6%
Total Extramural Funds	3,849,958	100.0%
Total Intramural/RMS	1,208,147	
*Total NCI	\$5,058,105	

*EXCLUDES projects awarded with Stamp Out Breast Cancer funds as well as royalty income (see page B-7)

NCI Obligations by Mechanism, Fiscal Year 2011

(Dollars in Thousands)

		Number	Amount	% of Total	
Research Project Grants	Non-Competing	3,769	1,631,514	32.3%	
	Administrative Supplements	(206)	23,619	0.5%	
	Competing	1,106	424,494	8.4%	
	Subtotal, without SBIR/STTR Grants	4,875	2,079,627	41.1%	
	SBIR/STTR Grants	144	84,054	1.7%	
	Subtotal, Research Project Grants	5,019	2,163,681	42.8%	
Centers & SPOREs	Cancer Centers Grants-P20/P30	66	278,345	5.5%	
	SPOREs-P50	59	121,868	2.4%	
	Other P50s/P20s	20	35,173	0.7%	
	Other Specialized Centers	111	162,651	3.2%	
	Subtotal, Centers	256	598,037	11.8%	
Other Research	Career Program			0.0%	
	Temin & Minority Mentored Awards-K01	56	7,377	0.2%	
	Estab. Inv. Award-K05	25	3,741	0.1%	
	Preventive Oncology-K07	88	12,257	0.2%	
	Clinical Investigator-K08	91	14,129	0.3%	
	Clinical Oncology-K12	18	12,424	0.3%	
	Stem Cell Research-K18	1	117	0.0%	
	Transitional Career Development-K22	28	4,827	0.1%	
	Mentored Patient Oriented RCDA-K23	38	5,937	0.1%	
	Mid-Career Invest. & Patient Orient. Res-K24	16	2,859	0.1%	
	Mentored Quant. Res Career-K25	21	2,867	0.1%	
	Inst. Curr. Award-K30	0	0	0.0%	
	Pathway to Independence Awards-K99	56	7,080	0.1%	
	Subtotal, Career Program	438	73,615	1.5%	
	Cancer Education Program-R25	90	32,590	0.6%	
	Clinical Cooperative Groups-U10	135	243,880	4.8%	
	Rsch Enhance-SC1 & Pilot Research - SC2	2	633	0.0%	
	Continuing Education	3	260	0.0%	
	Resource Grants-R24/U24	50	68,416	1.4%	
	Explor Coop Agreement-U56	0	300	0.0%	
	Global Infect. Disease Rsrch Training Prog - D43	9	4,627	0.1%	
	Conference Grants-R13	83	1,310	0.0%	
	Subtotal, Other Research Grants	810	425,631	8.4%	
	Subtotal, Research Grants		6,085	3,187,349	63.0%
	NRSA Fellowships	<i>Trainees:</i>	1,375	67,654	1.3%
	R&D Contracts	R&D Contracts	393	560,932	11.1%
		SBIR Contracts	74	26,103	0.5%
Subtotal, Contracts		467	587,035	11.6%	
Intramural Research	Program		697,026	13.8%	
	NIH Management Fund/SSF Assessment		136,644	2.7%	
	Subtotal, Intramural Research	<i>FTEs:</i>	1,972	833,670	16.5%
RMS	Research Mgmt and Support		335,300	6.6%	
	NIH Management Fund/SSF Assessment		39,177	0.8%	
	Subtotal, RMS	<i>FTEs:</i>	1,163	374,477	7.4%
Buildings and Facilities			7,920	0.2%	
Construction			0	0.0%	
*Total NCI	<i>FTEs:</i>	3,135	5,058,105	100.0%	

*EXCLUDES projects awarded with Stamp Out Breast Cancer funds as well as royalty income (see page B-7)

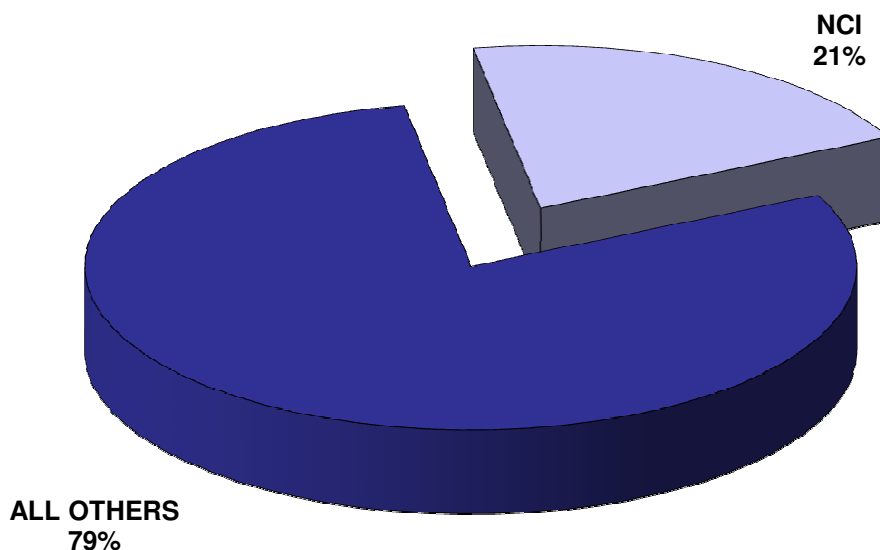
Division Obligations by Mechanism, Fiscal Year 2011

(Dollars in Thousands)

CCR	DCEG	DCTD	DCB	DCCPS	DCP	DEA	OD	Research Grants	Program Support
								1,556,185	75,329
								23,619	
								424,494	
								2,004,298	75,329
								84,054	
								2,088,352	75,329
							278,345		
		121,303					565		
		14,693		19,887	400		193		
		5,676	31,789	17,057	2,171		105,958		
		141,672	31,789	36,944	2,571		385,061		
							7,377		
							3,741		
							12,257		
							14,129		
							12,424		
							117		
							4,827		
							5,937		
							2,859		
							2,867		
							7,080		
							73,615		
							32,590		
		153,861			89,000		1,019		
								633	
								260	
								68,416	
								300	
								4,627	
								1,310	
		153,861	0	0	89,000		33,609	75,546	
		295,533	31,789	36,944	91,571		492,285	2,163,898	75,329
								67,654	
	23,626	118,356	530	69,354	39,823		212,954		96,289
							26,103		
	23,626	118,356	530	69,354	39,823		239,057		96,289
423,581	69,464						173,288		30,693
									136,644
423,581	69,464						173,288		167,337
		47,276	9,537	31,381	17,244	21,992	176,772		31,098
									39,177
		47,276	9,537	31,381	17,244	21,992	176,772		70,275
							7,920		
423,581	93,090	461,165	41,856	137,679	148,638	21,992	1,156,976	2,163,898	409,230

NIH Management Fund, Service & Supply Fund, and GSA Rent Fiscal Year 2010

(Dollars in Thousands)



DISTRIBUTION OF NCI PAYMENT	Amount	Share of NCI
Clinical Center	\$106,986	61.0%
Center for Scientific Review	11,789	6.7%
Center for Information Technology	5,299	3.0%
Service and Supply Fund Assessment	17,939	10.2%
Other Research Services	13,979	8.0%
Other OD	19,447	11.1%
*Total Management Fund and SSF	175,439	100.0%
Other NIH Institutes Management Fund and SSF	1,448,255	
Total NIH Management Fund and SSF	\$1,623,694	

The Management Fund provides for the financing of certain common research and administrative support activities which are required in the operations of NIH:

Clinical Center: Admissions and follow-up, anesthesiology, diagnostic x-ray, nuclear medicine, clinical pathology, blood bank, rehabilitation medicine, pharmacy, medical records, nursing services, patient nutrition service, housekeeping services, laundry, and social work.

Center for Scientific Review: Initial scientific review of applications and assignment of research grant applications to institutes.

Center for Information Technology: Research and development program in which concepts and methods of computer science are applied to biomedical problems.

GSA Rental Payments for Space: All building rental costs, including utilities and guard services.

Other Research Services: Procurement, safety, engineering, biomedical engineering, veterinary resources, and library services.

Service & Supply Fund: Mainframe computing, enterprise IT software planning and development, engineering planning and design, printing, telecommunications, procurement, shipping and receiving, motor pool, research animals, fabrication and maintenance of scientific equipment, utilities and plant maintenance, and biomedical engineering.

Special Sources of Funds

CRADAs

As a result of the Federal Technology Transfer Act of 1986 (PL 99-502), government laboratories are authorized to enter into Cooperative Research and Development Agreements (CRADAs) with private sector entities. Licensing agreements are usually incorporated into the CRADA document which addresses patent rights attributable to research supported under the CRADA.

NCI CRADA Receipts Deposited to the U.S. Treasury
(Dollars in Thousands)

Fiscal Year	Carryover from Prior Year	Collections	Obligations
2000	8,240	2,717	4,618
2001	6,339	5,295	2,770
2002	8,864	5,048	2,380
2003	11,533	5,221	5,361
2004	11,351	5,080	5,469
2005	10,962	6,858	4,253
2006	13,567	6,142	7,125
2007	12,584	9,410	8,360
2008	13,634	6,677	7,200
2009	13,111	5,466	4,765
2010	13,813	5,024	5,644
2011	13,150	8,582	5,894

Royalty Income

NCI retains a portion of the royalty income generated by the patents related to NCI-funded research. A major portion of this royalty income is used to reward employees of the laboratory, further scientific exchange, and for education and training in accordance with the terms of the Federal Technology Transfer Act (PL 99-502). Receipts are also used to support costs associated with processing and collecting royalty income and for technology transfer efforts at NCI and NIH.

NCI Royalty Income Funding History
(Dollars in Thousands)

Years	Collections*	Inventor Payments	Other
2000/2001	37,040	4,811	32,229
2001/2003	27,443	6,210	21,233
2002/2004	42,565	3,961	38,604
2003/2005	27,271	5,262	22,009
2004/2006	26,923	4,950	21,973
2005/2007	34,086	5,745	28,341
2006/2008	29,811	6,853	22,958
2007/2009	36,344	7,210	29,134
2008/2010	50,269	8,192	42,077
2009/2011	51,621	10,225	41,396
**2010/2012	58,515	12,321	46,194
**2011/2013	69,154	12,321	56,833

*Does not include assessments by NIH.

**2010/2012 and 2011/2013 collections and payments are estimates.

Stamp Out Breast Cancer

The Stamp Out Breast Cancer Act (PL 105-41) was established in August 1997, extended in July 2000 (PL 106-253), November 2005 (PL 109-100), December 2007 (PL 110-150), and again in December 2011 (PL 112-80). This act allows postal customers to contribute funding to breast cancer research through their voluntary purchases of special rate postage stamps from the U.S. Postal Service. Of the funds collected above the postage costs and administrative costs, the Act requires the USPS to transfer 70% to NIH and 30% to the Department of Defense. As of November 2011, NCI has received \$51,601,086. NCI has used these funds for research projects directed towards breast cancer research. Thus far, four major programs have been funded -- the "Insight Awards to Stamp Out Breast Cancer," the "Breast Cancer Research Stamp Exception Program," the "Breast Cancer Premalignancy Program" and a clinical trial to determine the risk of breast cancer recurrence. In FY 2011, \$1.977 million was obligated on Breast Cancer Stamp Fund programs.

Funding for Various Research Areas

(Dollars in Millions)

The National Cancer Institute reports how appropriated funds are spent in a number of different categories or classifications including specific cancer sites, cancer types, diseases related to cancer, as well as types of research mechanisms. The table below represents funding levels for frequently requested research areas. These research areas do not represent the entire NCI research portfolio. Funding for these areas can overlap and do not add to the total NCI budget. For example, dollars for a clinical trial on breast cancer research would be included in both the Breast Cancer and the Clinical Trials lines in the table below. Similarly, a basic cancer research project may be relevant to cervical, uterine and ovarian cancers and relevant funding would be included in the figures for all three sites.

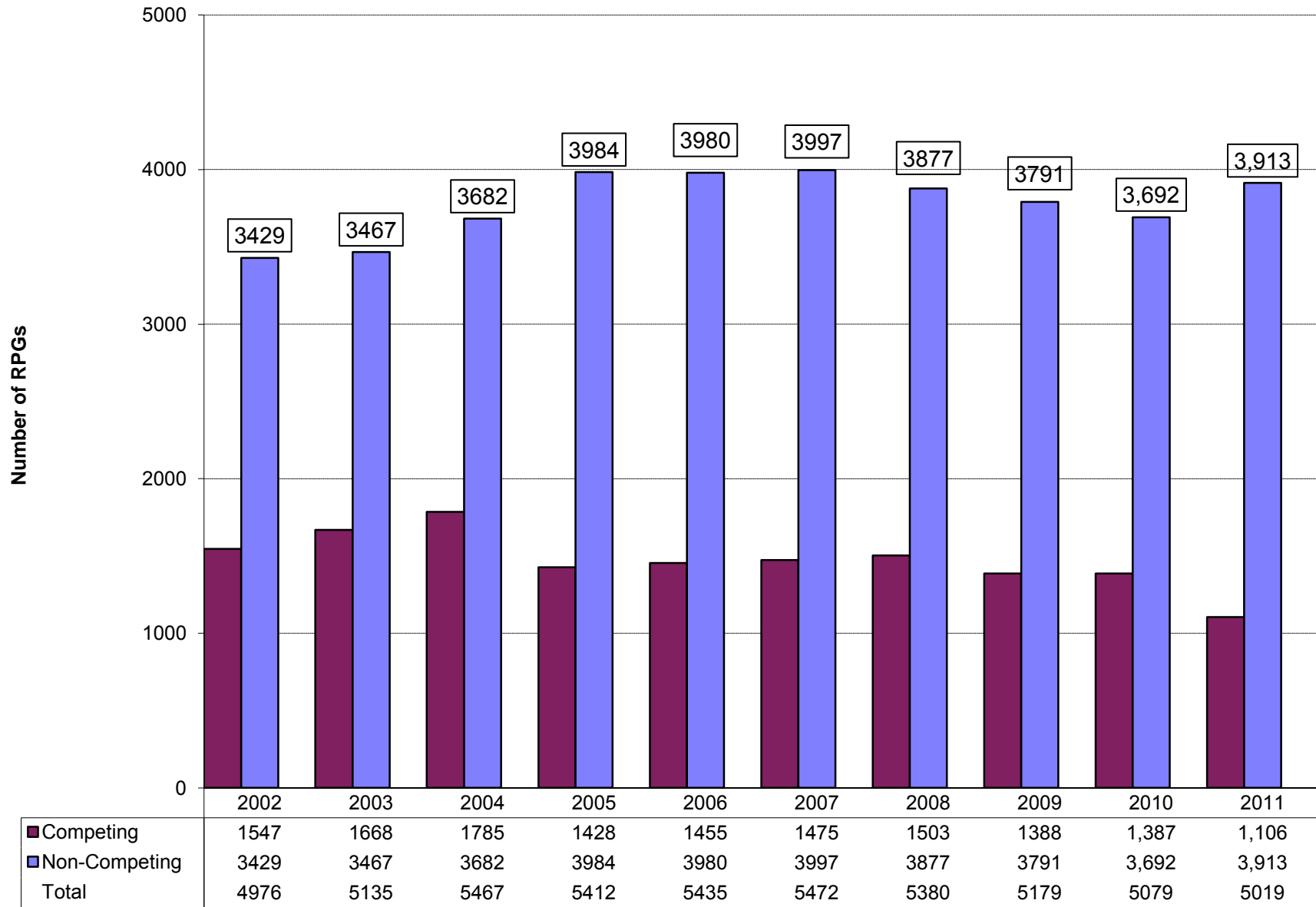
Disease Area	2007 Actual	2008 Actual	2009 Actual	2010 Actual	2011 Actual
Total NCI Budget	\$4,792.6	\$4,827.6	\$4,966.9	\$5,098.1	\$5,058.1
AIDS	253.7	258.5	265.9	272.1	270.0
Brain & CNS	148.2	153.7	151.5	156.8	172.6
Breast Cancer	572.4	572.6	599.5	631.2	625.1
Cervical Cancer	82.4	76.8	77.8	77.0	81.4
Clinical Trials	843.7	853.2	846.6	852.3	877.8
Colorectal Cancer	258.4	273.7	264.2	270.4	265.1
Head and Neck Cancers	66.2	76.1	77.1	62.7	57.2
Hodgkins Disease	16.5	17.5	18.2	14.6	13.4
Leukemia	205.5	216.4	220.6	239.7	227.0
Liver Cancer	67.7	74.2	70.3	72.6	66.2
Lung Cancer	226.9	247.6	246.9	281.9	296.8
Melanoma	97.7	110.8	103.7	102.3	115.6
Multiple Myeloma	32.3	41.5	45.2	48.5	54.9
Non Hodgkin's Lymphoma	113.0	122.6	130.9	122.4	126.4
Ovarian Cancer	96.9	100.0	110.1	112.3	110.8
Pancreatic Cancer	73.3	87.3	89.7	97.1	99.5
Prostate Cancer	296.1	285.4	293.9	300.5	288.3
Stomach Cancer	12.0	12.4	15.4	14.5	13.4
Uterine Cancer	16.6	17.1	18.0	14.2	15.9

Note: These figures were created using NCI's coding methodology. More information about this methodology, as well as project listings for these categories and others, are available online through NCI's Funded Research Portfolio website.

<http://fundedresearch.cancer.gov/>

Research Project Grants Number of Awards Fiscal Years 2002-2011

Includes Small Business Innovation Research and Small Business Technology Transfer Awards



*EXCLUDES projects awarded with Stamp Out Breast Cancer Funds.

RPGs Requested and Awarded Fiscal Years 2002-2011

(Dollars in Thousands)

Fiscal Year	Type		Requested		Awarded		Success
2002	Competing	New	4539	\$1,407,475	1142	\$302,217	28.4%
		Renewal	861	404,789	384	186,087	
		Supplement	42	8,512	21	3,499	
		Subtotal	5442	1,820,776	1547	491,803	
	Non-Competing				3429	1,356,138	
	Total				4976	1,847,941	
2003	Competing	New	5323	\$1,675,039	1222	\$347,446	26.5%
		Renewal	955	447,122	441	194,084	
		Supplement	20	4,671	5	1,338	
		Subtotal	6298	2,126,832	1668	542,868	
	Non-Competing				3467	1,457,144	
	Total				5135	2,000,012	
2004	Competing	New	6,558	\$2,045,451	1,333	\$339,925	23.6%
		Renewal	988	518,201	445	210,790	
		Supplement	24	8,337	7	2,196	
		Subtotal	7,570	2,571,989	1,785	552,911	
	Non-Competing				3,682	1,549,727	
	Total				5,467	2,102,638	
2005	Competing	New	6,357	\$2,239,503	1,086	\$309,507	19.2%
		Renewal	1,050	473,898	335	162,857	
		Supplement	22	6,147	7	1,185	
		Subtotal	7,429	2,719,548	1,428	473,549	
	Non-Competing				3,984	1,656,614	
	Total				5,412	2,130,164	
2006	Competing	New	6,585	\$2,215,548	1,105	\$293,912	19.2%
		Renewal	984	542,799	348	170,110	
		Supplement	13	4,098	2	681	
		Subtotal	7,582	2,762,445	1,455	464,703	
	Non-Competing				3,980	1,633,442	
	Total				5,435	2,098,145	
2007	Competing	New	6,428	\$2,116,286	1,178	\$306,431	20.2%
		Renewal	864	482,655	295	163,225	
		Supplement	12	3,513	2	609	
		Subtotal	7,304	2,602,454	1,475	470,265	
	Non-Competing				3,997	1,582,828	
	Total				5,472	2,053,093	
2008	Competing	New	5,944	\$1,991,089	1,150	\$324,070	21.7%
		Renewal	966	515,784	352	187,458	
		Supplement	1	408	1	338	
		Subtotal	6,911	2,507,281	1,503	511,866	
	Non-Competing				3,877	1,509,611	
	Total				5,380	2,021,477	
2009	Competing	New	6,167	\$2,069,518	1,029	\$320,980	19.4%
		Renewal	1,000	500,201	358	177,853	
		Supplement	5	1,141	1	67	
		Subtotal	7,172	2,570,860	1,388	498,900	
	Non-Competing				3,791	1,564,139	
	Total				5,179	2,063,039	
2010	Competing	New	7,494	\$2,776,315	1,041	\$375,830	16.3%
		Renewal	1,007	591,060	343	183,675	
		Supplement	18	6,805	3	1,491	
		Subtotal	8,519	3,374,180	1,387	560,996	
	Non-Competing				3,692	1,531,733	
	Total				5,079	2,092,729	
2011	Competing	New	8,445	\$3,183,607	962	\$342,196	12.6%
		Renewal	756	454,907	201	104,002	
		Supplement	29	8,871	3	460	
		Subtotal	9,230	3,647,385	1,166	446,658	
	Non-Competing				3,853	1,641,694	
	Total				5,019	2,088,352	

Includes Small Business Innovation Research and Small Business Technology Transfer Awards.

Success rate is the number of awarded grants divided by the number of awards requested.

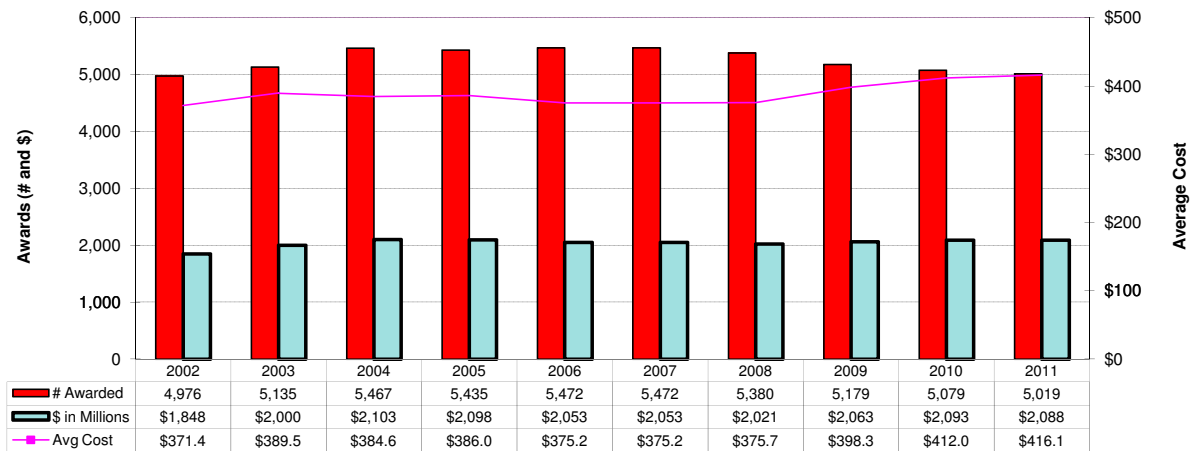
Totals exclude Assessments for Program Evaluation and projects awarded with Stamp Out Breast Cancer Funds.

RPG Awards by Activity Codes

Fiscal Years 2002-2011

(Dollars in Thousands; Activity Code Descriptions on next page)

		R01	DP1	DP2	P01	R00	R37	R29	RFA	U01	U19	UH2	UA5	R03	R21	R33	R15	R55	R56	SBIR/ STTR	TOTAL	
2003	#	3,573			178		70	14	252	27				203	360	81	21			356	5,135	
	\$	1,207,387			336,607		35,360	1,584	173,342	31,126				15,207	67,742	37,714	3,086			90,857	2,000,012	
2004	#	3,780			177		73	0	233	26				240	425	96	20			397	5,467	
	\$	1,277,185			344,489		37,888	53	168,539	31,377				18,067	77,970	42,931	4,560			99,579	2,102,638	
2005	#	3,848			176		74		254	30	1			223	430	88	20	2	1	265	5,412	
	\$	1,312,762			338,660		40,007		171,403	34,100	1,049			16,894	76,566	36,250	4,091	200	407	97,775	2,130,164	
2006	#	3,909			173		76		273	26	3			218	405	73	14			2	263	5,435
	\$	1,293,880			339,616		40,067		173,304	31,292	4,365			16,558	70,650	28,726	2,983			649	96,055	2,098,145
2007	#	3,849			172		73		285	22	3			284	437	48	19			2	278	5,472
	\$	1,266,622			326,968		38,232		177,423	24,295	4,212			21,640	78,748	16,739	4,042			495	93,677	2,053,093
2008	#	3,732	2		158	2	70		294	25	3			256	466	36	22			2	312	5,380
	\$	1,250,346	1,651		305,250	497	36,287		174,254	20,872	4,366			19,597	92,120	13,770	4,725			302	97,439	2,021,476
2009	#	3,573	3		151	29	63		326	32	2			239	447	25	27	1		261	5,179	
	\$	1,248,939	3,313		302,270	7,186	32,640		218,798	31,320	1,584			18,401	91,537	9,094	5,823	100	79	91,954	2,063,038	
2010	#	3,655	5	1	140	55	61		275	43	1			181	415	16	24			207	5,079	
	\$	1,323,673	6,021	2,512	280,531	13,665	31,498		200,424	36,209	1,252			14,195	83,950	5,583	7,539			8	85,669	2,092,729
2011	#	3,648	8		129	71	59		290	65	2	1	1	127	442	9	23			144	5,019	
	\$	1,331,635	7,639		259,230	17,239	30,327		194,142	47,100	5,874	255	381	9,646	88,481	3,166	9,183			84,054	2,088,352	



*EXCLUDES projects awarded with the Stamp Out Breast Cancer Funds and Program Evaluation.

Activity Code Descriptions

R01	Research Project (Traditional) - discrete, specified, circumscribed project to be performed by the named investigator(s) in an area representing his/her specified interest and competencies.
DP1	NIH Director's Pioneer Award (NDPA) - Support for individuals who have the potential to make extraordinary contributions to medical research. Not renewable
DP2	NIH Director's New Innovator Awards support exceptionally creative new investigators who propose highly innovative projects that have the potential for unusually high impact. This award complements ongoing efforts by NIH and its institutes and centers to fund new investigators through R01 grants and other mechanisms.
P01	Research Program Projects - broadly based, multidisciplinary, often long-term, research program which has a specific major objective or a basic theme. A program project is directed toward a range of problems having a central research focus in contrast to the usually narrower thrust of the traditional research project.
R00	Research Transition Award - To support the second phase of a Career/Research Transit award program that provides 1-3 years of independent research support (R00) contingent on securing an independent research position. Award recipients will be expected to contract successfully for independent R01 support from the NIH during the R00 research transition award period.
R35	Outstanding Investigator Grants - long-term support to an experienced investigator with an outstanding record of research productivity. This support is intended to encourage investigators to embark on long-term projects of unusual potential in a categorical program area.
R37	Methods to Extend Research in Time (MERIT) Award - long-term grant support to investigators whose research competence and productivity are distinctly superior and who are highly likely to continue to perform in an outstanding manner. Investigators may not apply for a MERIT award. Program staff and/or members of the cognizant National Advisory Council/Board will identify candidates for the MERIT award during the course of review of competing research grant applications prepared and submitted in accordance with regular PHS requirements.
R29	First Independent Research Support and Transition (FIRST) Award - sufficient initial period of research support for newly independent biomedical investigators to develop their research capabilities and demonstrate the merit of their research ideas.
RFA	Request for Applications - A formal statement inviting grant or cooperative agreement applications in a well-defined scientific area to accomplish specific program purposes and indicates the amount of funds set aside for the competition and/or the estimated number of awards to be made.
U01	Research Project Cooperative Agreement - discrete, specified, circumscribed project to be performed by the named investigator(s) in an area representing his/her specific interest and competencies.
U19	Research Program Cooperative Agreements - support research programs that have multiple projects directed towards specific major objective, basic theme, or program goal, requiring a broad-based, multidisciplinary, and often long-term, approach.
UH2	Exploratory/Developmental Cooperative Agreement Phase I - To support the development of new research activities in categorical program areas. (Support generally is restricted in level of support and in time.)
UA5	Academic Research Enhancement Award (AREA) Cooperative Agreements - support cooperative agreements for the Academic Research Enhancement Award (AREA) program. AREA supports small scale research projects conducted by faculty in primarily baccalaureate degree-granting domestic institutions.
R03	Small Grants - research support specifically limited in time and amount for studies in categorical program areas. Small grants provide flexibility for initiating studies, which are generally for preliminary short-term projects and are non-renewable.
R15	Academic Research Enhancement Award (AREA) - to domestic health professional schools and other institutions offering baccalaureate or advanced degrees in health sciences, except those that have received NIH research grants and/or cooperative agreements. Supports feasibility studies and other small-scale research projects.
R21	Exploratory/Developmental Grants - Phase I development of new research activities in categorical program areas. Support generally is restricted in level of support and in time.
R33	Exploratory/Developmental Grants - Phase II development of new research activities in categorical program areas. Support generally is restricted in level of support and in time.
R55	Shannon Awards - limited support to scientists whose research applications fall short of the cutoff for funding yet are at the "margin of excellence" whereby the perceived quality of the grant is statistically indistinguishable from grants that are funded.
R56	High-Priority, Short-Term Project Award - provide limited, non-renewable interim support to enable an applicant to gather additional data for revision of a new or competing renewal application.
R41	Small Business Technology Transfer (STTR) Grants - Phase I - limited support to projects conducted jointly by a small business concern and a research institution in which not less than 40% of the work is performed by the small business.
R42	Small Business Technology Transfer (STTR) Grants - Phase II - limited support to projects conducted jointly by a small business concern and a research institution in which not less than 40% of the work is performed by the small business.
R43	Small Business Innovation Research (SBIR) Grants - Phase I - projects limited in time and amount, to establish the technical merit and feasibility of R&D ideas which may ultimately lead to commercial products or services.
R44	Small Business Innovation Research (SBIR) Grants - Phase II - in-depth development of R&D ideas whose feasibility has been established in Phase I and which are likely to result in commercial products or services.

Cancer Centers by State (P30 Core Grants), Fiscal Year 2011

(Dollars in Thousands)

State	Grantee Institution	Code	Count	Amount
Alabama	University of Alabama at Birmingham	Comprehensive Core	1	\$5,801
Arizona	University of Arizona	Comprehensive Core	1	4,029
California	Burnham Institute for Medical Research	Basic Core	1	3,887
	City of Hope/Beckman Research Institute	Comprehensive Core	1	2,300
	Salk Institute for Biological Studies	Basic Core	1	2,936
	Stanford University	Clinical Core	1	3,166
	University of California Davis	Clinical Core	1	3,261
	University of California Irvine	Comprehensive Core	1	1,324
	University of California Los Angeles	Comprehensive Core	1	4,576
	University of California San Diego	Comprehensive Core	1	4,430
	University of California San Francisco	Comprehensive Core	1	7,832
	University of Southern California	Comprehensive Core	1	6,530
Colorado	University of Colorado Denver	Comprehensive Core	1	4,071
Connecticut	Yale University	Comprehensive Core	1	1,835
Dist of Col	Georgetown University	Comprehensive Core	1	1,550
Florida	H. Lee Moffitt Cancer Center & Research Institute	Comprehensive Core	1	2,732
Georgia	Emory University	Clinical Core	1	1,480
Hawaii	University of Hawaii at Manoa	Clinical Core	1	720
Illinois	Northwestern University	Comprehensive Core	1	4,905
	University of Chicago	Comprehensive Core	1	4,226
Indiana	Indiana Univ-Purdue Univ at Indianapolis	Clinical Core	1	1,195
	Purdue University West Lafayette	Basic Core	1	1,195
Iowa	University of Iowa	Comprehensive Core	1	2,439
Maine	Jackson Laboratory	Basic Core	1	2,144
Maryland	Johns Hopkins University	Comprehensive Core	1	7,070
	University of Maryland Baltimore	Clinical Core	1	1,565
Massachusetts	Dana-Farber Cancer Institute	Comprehensive Core	1	11,240
	Massachusetts Institute of Technology	Basic Core	1	3,854
Michigan	University of Michigan at Ann Arbor	Comprehensive Core	1	5,745
	Wayne State University	Comprehensive Core	1	2,679
Minnesota	Mayo Clinic Rochester	Comprehensive Core	1	5,596
	University of Minnesota Twin Cities	Comprehensive Core	1	3,554
Missouri	Washington University	Comprehensive Core	1	4,505
Nebraska	University of Nebraska Medical Center	Clinical Core	1	1,579
New Hampshire	Dartmouth College	Comprehensive Core	1	3,126
New Jersey	Robert Wood Johnson Medical School	Comprehensive Core	1	3,035
New Mexico	University of New Mexico	Clinical Core	1	2,059
New York	Albert Einstein College of Medicine Yeshiva University	Clinical Core	1	4,300
	Cold Spring Harbor Laboratory	Basic Core	1	4,306
	Columbia University Health Sciences	Comprehensive Core	1	3,891
	New York University School of Medicine	Clinical Core	1	2,512
	Roswell Park Cancer Institute Corp	Comprehensive Core	1	4,035
North Carolina	Sloan-Kettering Institute for Cancer Res	Comprehensive Core	1	13,561
	Duke University	Comprehensive Core	1	5,837
	University of North Carolina Chapel hill	Comprehensive Core	1	7,165
	Wake Forest University Health Sciences	Comprehensive Core	1	1,394
Ohio	Case Western Reserve University	Comprehensive Core	1	4,972
	Ohio State University	Comprehensive Core	1	4,637
Oregon	Oregon Health and Science University	Clinical Core	1	1,210
Pennsylvania	Fox Chase Cancer Center	Comprehensive Core	1	4,465
	Thomas Jefferson University	Clinical Core	1	3,022
	University of Pennsylvania	Comprehensive Core	1	7,747
	University of Pittsburgh at Pittsburgh	Comprehensive Core	1	5,450
	Wistar Institute	Basic Core	1	2,401
South Carolina	Medical University of South Carolina	Clinical Core	1	1,494
Tennessee	St. Jude Children's Research Hospital	Comprehensive Core	1	5,800
	Vanderbilt University	Comprehensive Core	1	5,973
Texas	Baylor College of Medicine	Clinical Core	1	3,010
	University of Texas M.D. Anderson Cancer Center	Comprehensive Core	1	10,137
	University of Texas San Antonio Health Science Center	Clinical Core	1	1,350
	University of Texas Southwestern Medical Center	Clinical Core	1	1,550
Utah	University of Utah	Clinical Core	1	1,484
Virginia	University of Virginia Charlottesville	Clinical Core	1	2,415
	Virginia Commonwealth University	Clinical Core	1	953
Washington	Fred Hutchinson Cancer Research Center	Comprehensive Core	1	11,420
Wisconsin	University of Wisconsin Madison	Comprehensive Core	1	4,631
	Total P30s		66	265,292
	Planning Grants (P20s)		16	3,233
	Other P20, P30 & U41		0	9,820
Total Cancer Centers			66	278,345

Specialized Programs of Research Excellence, Fiscal Year 2011

(Dollars in Thousands)

In 1992, the NCI established the Specialized Programs of Research Excellence (SPORE). The Translational Research Program (TRP) is the home of the SPOREs — a cornerstone of NCI's efforts to promote collaborative, interdisciplinary translational cancer research. SPORE grants involve both basic and clinical/applied scientists, and support projects that will result in new and diverse approaches to the prevention, early detection, diagnosis and treatment of human cancers.

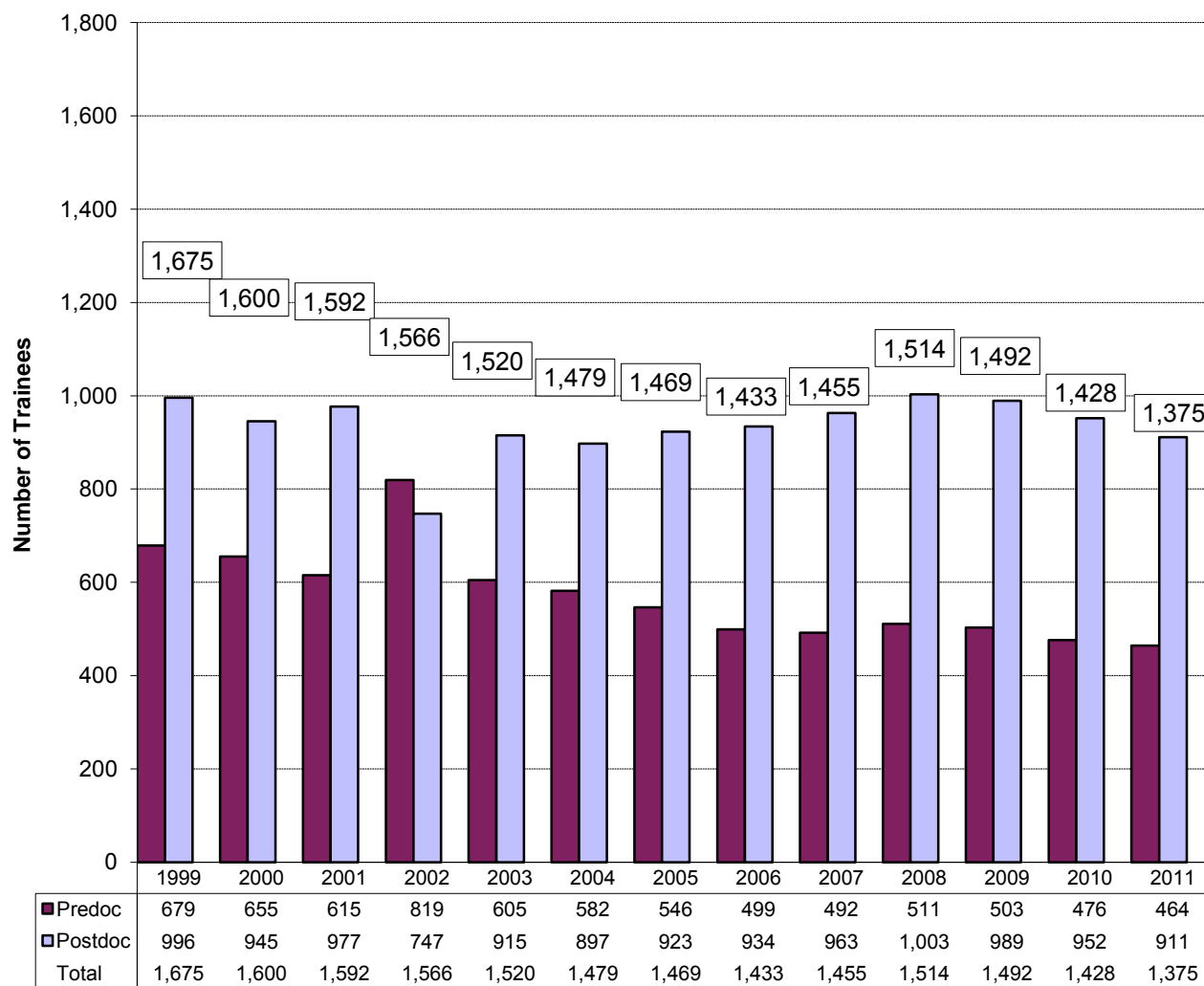
Each SPORE is focused on a specific organ site, such as breast or lung cancer, or on a group of highly related cancers, such as gastrointestinal cancers. SPOREs are designed to enable the rapid and efficient movement of basic scientific findings into clinical settings, as well as to determine the biological basis for observations made in individuals with cancer or in populations at risk for cancer. For more information, see <http://trp.cancer.gov>.

Mechanism	Site	No.	Amount
P50 SPOREs	Brain	3	\$6,487
	Breast	6	12,904
	Cervical	1	2,276
	Genitourinary	1	2,185
	Gastrointestinal	5	10,971
	Head and Neck	5	8,258
	Leukemia	2	4,370
	Lung	7	14,922
	Lymphoma	5	9,138
	Myeloma	2	4,370
	Ovarian	4	8,673
	Pancreatic	3	5,383
	Prostate	9	19,480
	Skin	5	9,327
	Uterine	2	2,660
		Subtotal	60
P20	<u>Gastrointestinal</u>		<u>463</u>
	Total P20		463
Co-funded	<u>Head & Neck with NIDCR</u>		<u>1</u>
	Total Co-funded		1
Total NCI SPOREs and NCI SPORE Funding		60	\$121,868

NRSA Predoctoral and Postdoctoral Trainees

Fiscal Years 1999-2011

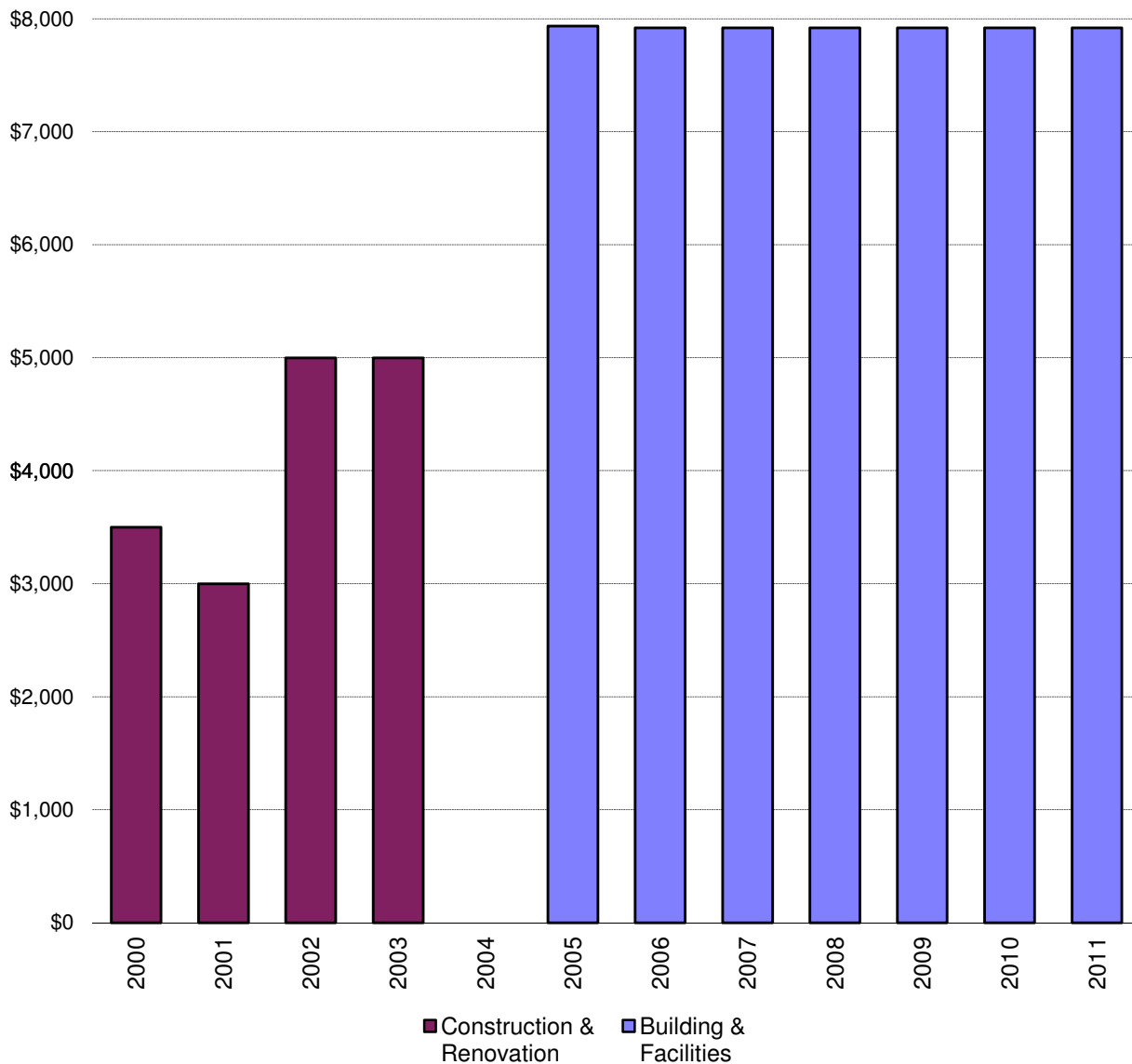
(Full Time Trainee Positions)



Construction/Renovation Funding and Building & Facilities Funding Fiscal Years 2000 - 2011

(Dollars in Thousands)

Construction/Renovation grants and contracts were used by grantees to build infrastructure. The grants (C06s) provide matching Federal funds for up to 50% of allowable costs for construction or major remodeling to create new facilities for cancer research. Although the NCI has the authority to fund Construction grants, Congress has not appropriated funds to this program for NCI since FY 2003. In FY 2005, NCI began to receive Building & Facilities funding to use specifically for repairs and improvements at the NCI - Frederick facility.



Grant and Contract Awards by State Fiscal Year 2011

(Dollars in Thousands)

State	Grants		Contracts		Total	
	No	Amount	No	Amount	No	Amount
Alabama	64	\$32,516	5	\$2,514	69	\$35,030
Arizona	62	33,541	3	1,599	65	35,140
Arkansas	22	9,168			22	9,168
California	841	453,896	37	25,295	878	479,191
Colorado	78	30,086	2	1,199	80	31,285
Connecticut	100	36,612	1	2,321	101	38,933
Delaware	2	1,187			2	1,187
District of Columbia	62	26,490	15	18,646	77	45,136
Florida	171	70,919	5	2,179	176	73,098
Georgia	100	32,350	11	5,429	111	37,779
Hawaii	20	12,304	1	1,237	21	13,541
Idaho					0	0
Illinois	234	103,610	8	3,391	242	107,001
Indiana	77	25,193			77	25,193
Iowa	36	14,917	1	4,178	37	19,095
Kansas	33	12,045	3	380	36	12,425
Kentucky	62	17,069	2	1,411	64	18,480
Louisiana	43	11,538	1	1,670	44	13,207
Maine	7	5,254			7	5,254
Maryland	238	128,611	66	397,272	304	525,882
Massachusetts	619	359,200	8	4,287	627	363,487
Michigan	226	113,381	6	5,804	232	119,185
Minnesota	190	103,709	8	4,628	198	108,337
Mississippi	5	1,060			5	1,060
Missouri	102	52,133	8	5,587	110	57,719
Montana	4	1,098			4	1,098
Nebraska	42	15,963			42	15,963
Nevada	6	1,868			6	1,868
New Hampshire	39	18,508			39	18,508
New Jersey	77	28,668	2	3,801	79	32,468
New Mexico	23	14,017	1	2,266	24	16,282
New York	595	293,881	5	4,632	600	298,514
North Carolina	260	119,811	7	1,212	267	121,023
North Dakota	2	461			2	461
Ohio	229	98,264	9	5,016	238	103,280
Oklahoma	10	3,491	1	121	11	3,612
Oregon	43	17,392			43	17,392
Pennsylvania	424	205,856	8	4,470	432	210,326
Rhode Island	38	12,559	1	66	39	12,625
South Carolina	47	16,139			47	16,139
South Dakota	5	2,851			5	2,851
Tennessee	202	99,157	5	2,356	207	101,513
Texas	520	225,715	10	4,095	530	229,810
Utah	51	22,427	1	1,771	52	24,198
Vermont	7	4,622			7	4,622
Virginia	105	60,584	12	22,275	117	82,858
Washington	222	149,058	7	14,185	229	163,243
West Virginia	11	2,745			11	2,745
Wisconsin	117	50,680	1	1,587	118	52,267
Wyoming	1	69			1	69
Subtotal	6,474	3,152,674	261	556,877	6,735	3,709,551
Guam	1	1,649			1	1,649
Puerto Rico	4	2,697			4	2,697
Total	6,479	3,157,020	261	556,877	6,740	3,713,896

Excludes STAMP, NRSA TAP, Loan Repayment Program, Foreign Contracts and Grants, Program Evaluation, and other assessments and miscellaneous expenses.

Grant and Contract Awards by Country Fiscal Year 2011

(Dollars in Thousands)

<u>Country</u>	<u>Grant</u>		<u>Contract</u>		<u>Total</u>	
	<u>No</u>	<u>Amount</u>	<u>No</u>	<u>Amount</u>	<u>No</u>	<u>Amount</u>
Australia	6	\$2,450			6	\$2,450
Belgium	1	233			1	233
Brazil	0	27			0	27
Canada	24	9,185	3	2,358	27	11,543
Costa Rica			1	3,837	1	3,837
France	3	4,046			3	4,046
India	1	196			1	196
Ireland	1	188			1	188
Israel	6	1,390			6	1,390
Korea	1	170			1	170
Malawi	0	150			0	150
Netherlands	0	217			0	217
Spain	2	149			2	149
Switzerland	2	605			2	605
Turkey	0	26			0	26
United Kingdom	8	2,233			8	2,233
Total Foreign	55	21,264	4	6,195	59	27,459

Excludes STAMP, NRSA TAP, Loan Repayment Program, Program Evaluation, and other assessments and miscellaneous expenses.

Institutions Receiving More than \$15 Million in NCI Support, FY 2011

(Dollars in Thousands)

State	Institution	Grants	Contracts	Total NCI
Alabama	University of Alabama at Birmingham	\$27,496	\$1,144	\$28,640
Arizona	University of Arizona	24,654	1,226	25,880
California	Burnham Institute for Medical Research	19,095		19,095
	City of Hope's Beckman Research Institute	21,190		21,190
	National Childhood Cancer Foundation	39,951		39,951
	Stanford University	52,276		52,276
	University of California System	174,375	1,758	176,133
	University of Southern California	39,800	3,343	43,143
Colorado	University of Colorado Health Sciences Center	21,473		21,473
Connecticut	Yale University	31,491		31,491
District of Columbia	Georgetown University	18,388	1,200	19,588
Florida	H. Lee Moffitt Cancer Center & Research Institute	37,448	1,301	38,749
Georgia	Emory University	20,781	2,216	22,997
Illinois	Northwestern University	30,128		30,128
	University of Chicago	27,562	1,330	28,892
	University of Illinois at Chicago	21,632	50	21,682
Indiana	Indiana University-Purdue University at Indianapolis	17,484		17,484
Iowa	University of Iowa	13,548	4,178	17,726
Maryland	The Johns Hopkins University	85,678	2,248	87,926
	SAIC-Frederick, Inc.		213,573	213,573
	Westat, Inc.		40,118	40,118
	Gynecologic Oncology Group	16,550		16,550
Massachusetts	Beth Israel Deaconess Medical Center	22,820		22,820
	Brigham and Women's Hospital	55,125		55,125
	Dana-Farber Cancer Institute	84,561		84,561
	Harvard University	23,697	22	23,719
	Massachusetts General Hospital	40,985	700	41,685
	Massachusetts Institute of Technology	22,292		22,292
	University of Massachusetts Medical School Worcester	16,301	50	16,351
Michigan	University of Michigan at Ann Arbor	77,495		77,495
	Wayne State University	19,641	4,734	24,375
Minnesota	Mayo Clinic in Rochester	63,255	4,261	67,516
	University of Minnesota	35,970	167	36,137
Missouri	Washington University	46,237	278	46,515
New Hampshire	Dartmouth College	18,066		18,066
New York	Columbia University Health Sciences	31,213		31,213
	Mount Sinai School of Medicine	24,460		24,460
	New York University	19,017		19,017
	Roswell Park Cancer Institute Corporation	35,370		35,370
	Sloan-Kettering Institute for Cancer Research	71,313	2,147	73,460
	University of Rochester	15,442		15,442
	Yeshiva University	26,135		26,135
North Carolina	Duke University	41,748		41,748
	University of North Carolina at Chapel Hill	51,441		51,441
Ohio	Case Western Reserve University	22,303		22,303
	Ohio State University	47,275	504	47,779
Pennsylvania	Fox Chase Cancer Center	17,045		17,045
	NSABP Foundation, Inc.	17,316		17,316
	University of Pennsylvania	58,654		58,654
	University of Pittsburgh	47,977	529	48,506
Tennessee	St. Jude Children's Research Hospital	22,933		22,933
	Vanderbilt University	67,320		67,320
Texas	Baylor College of Medicine	31,319		31,319
	University of Texas Health Science Center at San Antonio	15,523		15,523
	University of Texas, MD Anderson Cancer Center	116,394	3,052	119,446
	University of Texas, SW Medical Center at Dallas	21,731		21,731
Utah	University of Utah	21,069	1,771	22,840
Virginia	American College of Radiology	26,332		26,332
	University of Virginia at Charlottesville	15,763		15,763
Washington	Fred Hutchinson Cancer Research Center	89,876	10,495	100,371
	University of Washington	35,399		35,399
Wisconsin	University of Wisconsin	33,627	1,587	35,214
	Total	\$2,291,435	\$303,982	\$2,595,417

Includes Manpower Development Grants

Appropriations of the NCI 1938-2011

(In Whole Dollars)

Year	Amount	Description
1938 - 2000	\$44,993,335,220	
2001.....	3,757,242,000	prior to reductions in PL 106-554(-\$2,005,000 for across-the-board reduction). Includes -\$711,000 Secretary's 1% transfer, -\$781,000 transfer for Office of Human Research Protection and -\$24,000 lapse. Includes \$255,960,000 of AIDS funding.
2002.....	4,190,405,000	prior to reductions in PL 107-116(-\$4,524,000 via the Secretary's 1% transfer authority, -\$2,054,000 for the enacted rescission, -\$7,118,000 administrative reduction and -\$8,000 lapse). Includes \$254,396,000 of AIDS funding.
2003.....	4,622,394,000	prior to reductions in PL 108-7(-\$30,046,000 for the enacted rescission and -\$2,000 lapse). Includes \$263,442,000 of AIDS funding.
2004.....	4,770,519,000	prior to reductions in PL 108-199(-\$3,136,000 for Labor/HHS/ED rescission; \$28,128,000 for across the board reduction; -\$15,357,000 NIH 1% transfer assessment, and \$5,000 lapse). Includes \$266,975,000 of AIDS funding.
2005.....	4,865,525,000	prior to reductions in PL 108-447(\$38,914,000 .8% across the board reduction; -\$1,353,000 for Labor/HHS/ED rescission; -\$30,505,000 NIH 1% transfer assessment, and \$9,000 lapse). Includes \$265,907,000 of AIDS funding.
2006.....	4,841,774,000	prior to reductions in PL 109-149 (-\$48,418,000 for Labor/HHS/ED rescission; -\$3,293,000 HHS transfer for CMS activities; -\$42,834,000 NIH 1% transfer for roadmap activities, and \$4,000 lapse). Includes \$253,866,000 of AIDS funding.
2007.....	4,797,639,000	prior to reductions in PL 110-5 (-\$5,015,000 NIH transfer for GEI activities, and \$9,000 lapse). Includes \$253,866,000 of AIDS funding.
2008.....	4,827,556,000	Includes supplemental appropriation of \$25,559,000. Includes \$258,499,000 of AIDS funding.
2009.....	4,968,973,000	prior to reductions in PL 111-8 (-\$2,042,631 NIH transfer for activities, and \$4000 lapse). Includes \$265,882,000 of AIDS funding.
2010.....	5,103,388,000	prior to -\$760,000 HHS Secretary's transfer ,-\$4,459,000 in NIH transfer for activities, and \$22,000 lapse. Includes \$272,130,000 of AIDS funding.
2011.....	<u>5,058,577,000</u>	prior to \$472,000 lapse. Includes \$269,953,000 of AIDS funding.
1938-2011	96,797,327,220	

Bypass Budget Requests Fiscal Years 1974-2012

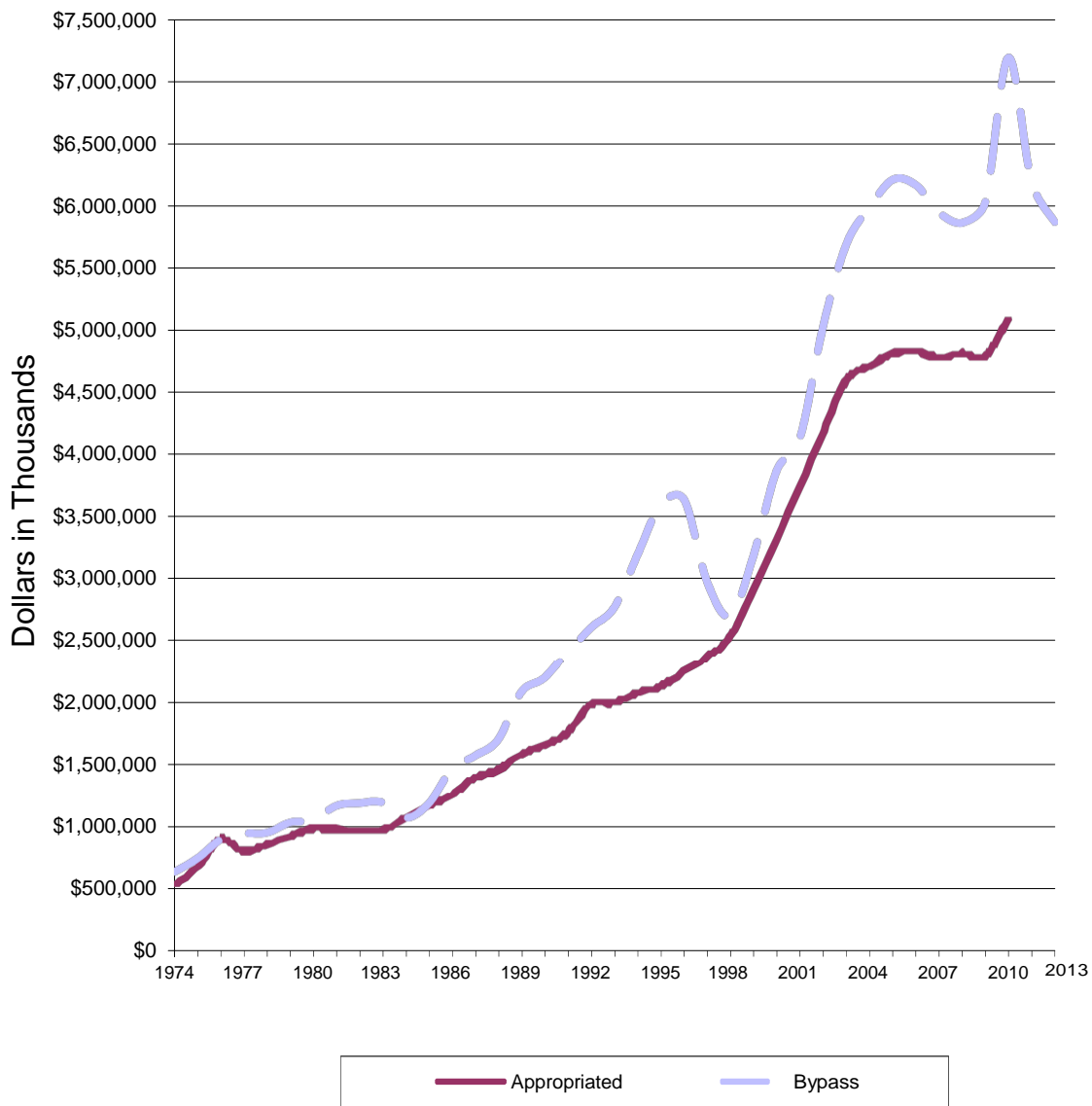
(in Whole Dollars)

Fiscal Year	Request	Fiscal Year	Request
1974.....	640,031,000	2000.....	3,873,000,000
1975.....	750,000,000	2001.....	4,135,000,000
1976.....	898,500,000	2002.....	5,030,000,000
1977.....	948,000,000	2003.....	5,690,000,000
1978.....	955,000,000	2004.....	5,986,000,000
1979.....	1,036,000,000	2005.....	6,211,000,000
1980.....	1,055,000,000	2006.....	6,170,000,000
1981.....	1,170,000,000	2007.....	5,949,714,000
1982.....	1,192,000,000	2008.....	5,865,788,000
1983.....	1,197,000,000	2009.....	6,028,386,000
1984.....	1,074,000,000	2010.....	7,193,393,000
1985.....	1,189,000,000	2011.....	6,199,666,000
1986.....	1,460,000,000	2012.....	5,869,857,000
1987.....	1,570,000,000	2013.....	To be determined*
1988.....	1,700,000,000		
1989.....	2,080,000,000		
1990.....	2,195,000,000		
1991.....	2,410,000,000		
1992.....	2,612,000,000		
1993.....	2,775,000,000		
1994.....	3,200,000,000		
1995.....	3,600,000,000		
1996.....	3,640,000,000		
1997.....	2,977,000,000		
1998.....	2,702,500,000		
1999.....	3,191,000,000		

The National Cancer Act in December 1971, included a provision for the Director, NCI to submit an annual budget request directly to the President, with comment only by NIH and DHHS. This Bypass Budget was first submitted for 1973.

*As of publication, the FY 2013 figures were still underdevelopment. When figures are finalized they will be available online at www.cancer.gov

Bypass Requests and Appropriations of the NCI Fiscal Years 1974-2013



*As of publication, the FY 2013 figures were still underdevelopment. When figures are finalized they will be available online at <http://www.cancer.gov>.

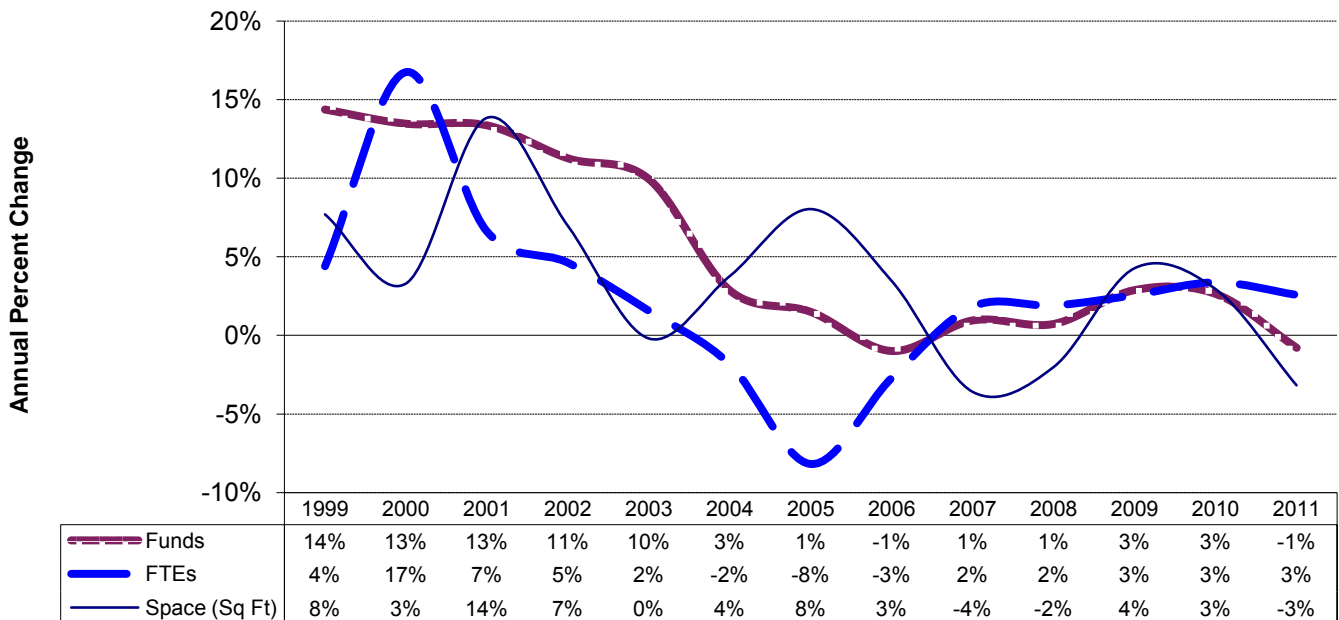
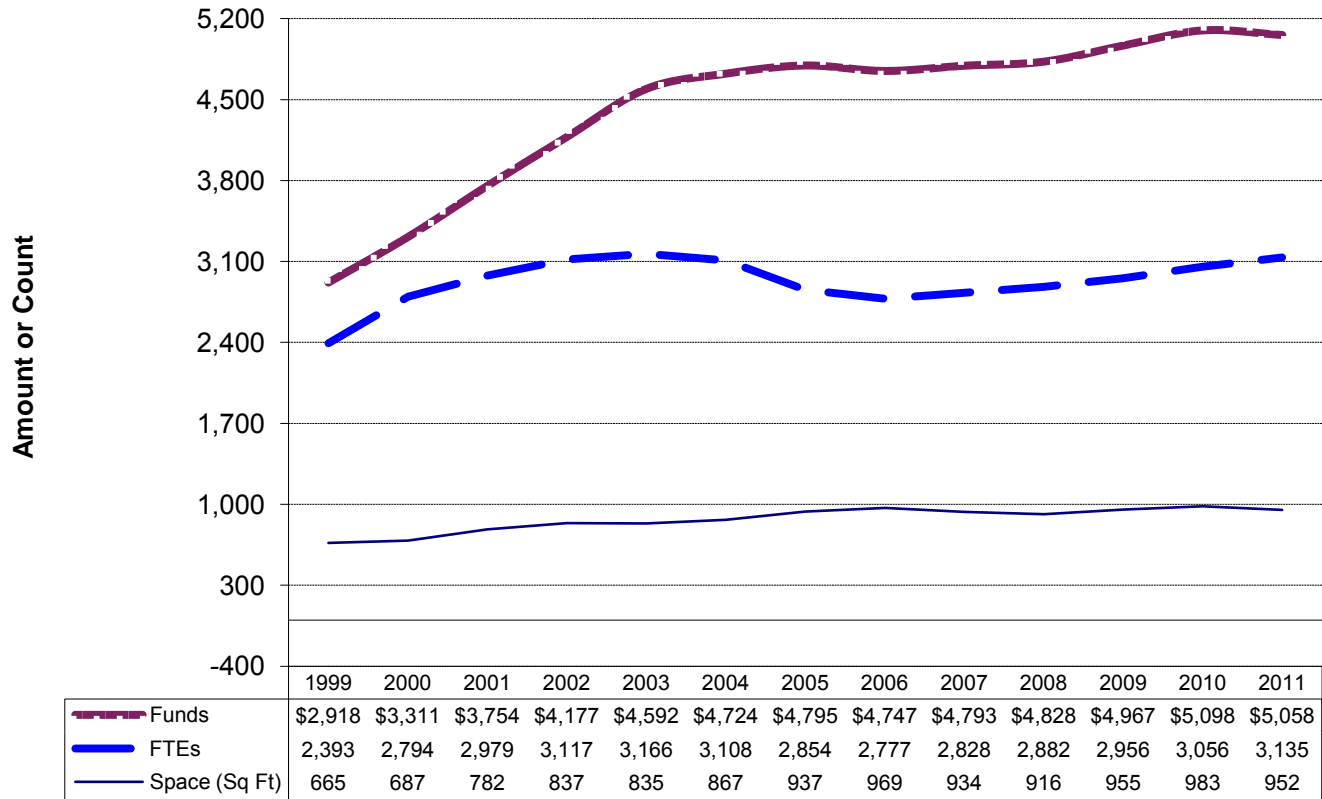
Comparison of Dollars, Positions, and Space Fiscal Years 1999-2011

Funds are obligations against the annual appropriation in millions of dollars.

FTEs are the number of workyears for appointed employees of the NCI. A workyear equals 2,080 hours.

The increase in FTEs in FY 2000 is due to the fact that 195 contract staff were converted to NCI appointments.

Space is in thousands of square feet, excluding NCI-Frederick.



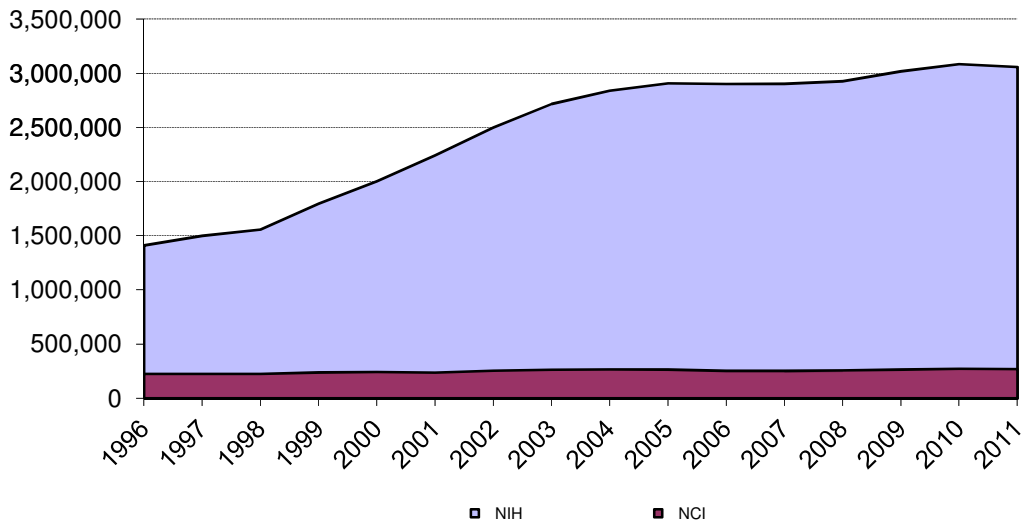
Personnel Resources Fiscal Years 1999-2011

Fiscal Year	Full Time Permanent Appointment	Other than Full Time Permanent	Training Fellows	Total Personnel Resources
1999	1,941	628	1,060	3,629
2000	2,139	831	1,202	4,172
2001	2,224	912	963	4,099
2002	2,250	979	949	4,178
2003	2,193	1,073	1,191	4,457
2004	2,083	990	1,232	4,305
2005	1,959	882	1,077	3,918
2006	2,579	289	1,113	3,981
2007	2,421	498	1,111	4,030
2008	2,075	920	1,016	4,011
2009	2,118	959	1,058	4,135
2010	2,148	1,011	1,073	4,232
2011	2,180	1,029	1,108	4,317

AIDS Funding History

Fiscal Years 1996 - 2011

Fiscal Year	NCI	NIH	% NCI of NIH
1996	225,360	1,411,860	16%
1997	224,733	1,501,073	15%
1998	225,991	1,559,071	14%
1999	239,190	1,797,422	13%
2000	244,145	2,005,100	12%
2001	237,789	2,244,160	11%
2002	254,396	2,500,866	10%
2003	263,442	2,718,171	10%
2004	266,975	2,840,384	9%
2005	265,907	2,909,381	9%
2006	253,666	2,902,183	9%
2007	253,666	2,904,536	9%
2008	258,499	2,928,300	9%
2009	265,882	3,019,279	9%
2010	272,130	3,085,597	9%
2011	269,953	3,059,243	9%





NATIONAL[®]
CANCER
INSTITUTE

NIH Publication No. 12-7772
Printed April 2012

