



# Legal Services Corporation

## Fact Book 2008

*August 2009*

*A publication of*

Legal Services Corporation  
3333 K Street, NW  
Washington, DC 20007  
[www.lsc.gov](http://www.lsc.gov)

*For further information, contact*

John Meyer, Director  
Office of Information Management  
202-295-1505  
[meyerj@lsc.gov](mailto:meyerj@lsc.gov)

## PREFACE

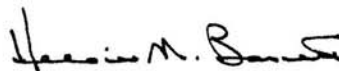
I am pleased to present the 2008 Legal Services Corporation Fact Book. This Fact Book contains selected national data on 2008 LSC program funding, legal services to clients including Private Attorney Involvement (PAI), client demographics, and program staffing. Also included is selected historical data from prior years.

The 2008 LSC Fact Book contains actual data with no extrapolations or estimates. Most of the data is derived from the Grant Activity Reports, a data collection process required of all LSC-funded programs in which data is submitted to LSC in March of each year. The remainder of the data is collected from budget and funding records of LSC-funded programs.

The 2008 LSC Fact Book concisely compiles these vital statistics on LSC-funded programs for easy use and reference. This information offers a national perspective on the resources available to and the services provided by LSC-funded programs. It is a useful reference for the LSC community and can also be used in presenting and explaining to those outside the LSC community what LSC-funded civil legal aid programs do for low-income persons in need of civil legal assistance.

I would like to thank Mulumebet Wolde and the staff of the LSC Office of Information Management, under the direction of John Meyer, for their careful work in preparing this 2008 LSC Fact Book.

We are very interested in answering any questions you may have or receiving comments about this document, including suggestions for other data compilations that would be useful to all programs. Please feel free to contact John Meyer, Director, Office of Information Management, at [meyerj@lsc.gov](mailto:meyerj@lsc.gov) or at 202-295-1505.



---

Helaine M. Barnett  
President, Legal Services Corporation  
August 2009

# Table of Contents

<b>2008 AT A GLANCE</b>	1
<b>FUNDING</b>	2
1976 – 2008 Annual LSC Appropriations	3
2008 Poverty Population and LSC Funding Summary by State	4
2008 LSC and Non-LSC Funding Received by LSC-Funded Programs by State	5
2008 LSC and Non-LSC Funding Summary (Pie Chart)	7
2008 LSC and Non-LSC Funding Summary	8
<b>CLIENT SERVICES</b>	9
2000 – 2008 Total LSC-Eligible Cases Closed by LSC-Funded Programs	10
2008 LSC-Eligible Case Services Summary by Reason for Closure (Pie Chart)	11
2008 LSC-Eligible Cases Closed by Case Type and Reason for Closure	12
2008 LSC-Eligible Case Services Summary by Case Type (Pie Chart)	15
2008 LSC-Eligible Cases Closed by Case Type	16
<b>CLIENT DEMOGRAPHICS</b>	17
2008 Ethnicity of LSC Clients (Pie Chart)	18
2008 Age and Gender of LSC Clients (Pie Chart)	19
2008 Age, Ethnicity and Gender of LSC Clients	20
<b>PRIVATE ATTORNEY INVOLVEMENT</b>	21
2008 Private Attorney Involvement (PAI) for LSC Programs	22
2007 – 2008 PAI with Percentage Change for LSC Programs	23
<b>STAFFING</b>	24
2008 Staffing Levels with Average Salary and Experience for LSC Programs	25
2008 Staff Ethnicity and Gender for LSC Programs (Pie Chart)	26
2008 Summary of Staff Positions by Job Classification, Ethnicity and Gender for LSC Programs	27
2008 Summary of LSC Program Staffing Levels by Job Classification, Years of Experience in Profession and Average Salary	28
2007 – 2008 Staffing Levels for LSC Programs	30
<b>LSC ORGANIZATIONAL CHART</b>	31

# LEGAL SERVICES CORPORATION

## 2008 AT A GLANCE

<b>Amount of LSC Funding and Related Support</b>	<b>\$354,647,367</b>
<b>Number of Programs Receiving Grants</b>	<b>137</b>
<b>Number of Offices</b>	<b>918</b>
<b>Number of Service Areas <sup>[1]</sup></b>	<b>206</b>

### Local LSC-Funded Programs

<b>Amount of Non-LSC Funding and Related Support</b>	<b>\$526,322,522</b>
<b>Number of Full-time Staff as of December 31, 2008</b>	
Attorneys	4,144 <sup>[2]</sup>
Paralegals	1,582
Other Staff	3,166
<b>Total</b>	<b>8,892</b>
<b>Number of Cases Closed</b>	
Basic Field - General (Program Staff Only)	781,501
Private Attorney Involvement	93,174
Basic Field - Native American	9,552
Basic Field - Migrant Farmworkers	4,928
<b>Total</b>	<b>889,155</b>
<b>Number of Cases Open on December 31, 2008</b>	<b>234,812</b>
<b>Total Number of Individual Clients Served During the Year</b>	<b>887,704 <sup>[3]</sup></b>

<sup>1</sup> There are three types of service areas: Basic Field – General, which are geographical areas that are States and other political jurisdictions or portions thereof, collectively covering all of the United States and serving all client-eligible persons therein; Basic Field – Migrant, which are entire States or political jurisdictions, but are limited to serving eligible Migrant Farmworkers therein; and Basic Field – Native American, which are descriptive and only approximately geographical and serve only Native Americans therein. Grantee programs may, and often do, serve more than one service area.

<sup>2</sup> The computation of the number of attorneys includes all Job Codes 5 to 11 (Litigation Director to Staff Attorney) and all Directors and Deputy Directors who are attorneys. It does not include the small number of attorneys serving in non-attorney positions – e.g. Management Professionals who are attorneys.

<sup>3</sup> This number is less than the number of cases closed because some clients have more than one case.

**Source: LSC Funding Tables and Grant Activity Reports – 2008**

# Funding

## 1976 – 2008 Annual LSC Appropriations

Grant Year	Annual LSC Appropriations <sup>[4]</sup> (\$)	Percentage Change from Prior Year
1976	116,960,000 <sup>[5]</sup>	
1977	125,000,000	6.9%
1978	205,000,000	64.0%
1979	270,000,000	31.7%
1980	300,000,000	11.1%
1981	321,300,000	7.1%
1982	241,000,000	-25.0%
1983	241,000,000	0.0%
1984	275,000,000	14.1%
1985	305,000,000	10.9%
1986	292,363,000	-4.1%
1987	305,500,000	4.5%
1988	305,500,000	0.0%
1989	308,555,000	1.0%
1990	316,525,000	2.6%
1991	328,182,000	3.7%
1992	350,000,000	6.6%
1993	357,000,000	2.0%
1994	400,000,000	12.0%
1995	400,000,000	0.0%
1996	278,000,000	-30.5%
1997	283,000,000	1.8%
1998	283,000,000	0.0%
1999	300,000,000	6.0%
2000	303,841,000	1.3%
2001	329,274,000	8.4%
2002	329,300,000	0.0%
2003	336,645,488	2.2%
2004	335,282,450	-0.4%
2005	330,803,705	-1.3%
2006	326,577,984	-1.3%
2007	348,578,000	5.4%
2008	350,490,000	0.5%

<sup>[4]</sup> Not including special supplemental emergency funds, and Veterans Court funds.

<sup>[5]</sup> The 1976 figure includes \$24,630,000 supplemental appropriations due to the Fiscal Year change from July 1 to October 1 and therefore includes five quarters' funding.

**Source:** *LSC Historical Data as of 2008*

## 2008 Poverty Population and LSC Funding Summary by State

State*	Total Poverty Population	Basic Field General Poverty Population	Basic Field Migrant Poverty Population	Basic Field General Amount (\$)	Basic Field Migrant Amount (\$)	Basic Field Nat. American Amount (\$) <sup>6</sup>	Basic Field Total (\$)
Alabama	698,097	694,540	3,557	6,224,674	0	0	6,224,674
Alaska	80,405	80,405	0	720,614	0	525,140	1,245,754
Arizona	698,669	682,618	16,051	6,117,826	143,854	3,152,763	9,414,443
Arkansas	411,777	403,232	8,545	3,613,885	0	0	3,613,885
California	4,706,130	4,420,741	285,389	39,619,998	2,557,741	857,881	43,035,620
Colorado	388,952	372,896	16,056	3,342,005	143,899	93,252	3,579,156
Connecticut	259,514	257,713	1,801	2,309,701	0	0	2,309,701
Delaware	69,901	67,217	2,684	602,419	0	0	602,419
District of Columbia	109,500	109,500	0	981,372	0	0	981,372
Florida	1,952,629	1,855,536	97,093	16,629,866	870,176	0	17,500,042
Georgia	1,033,793	991,407	42,386	8,885,285	379,876	0	9,265,161
Guam	34,792	34,792	0	311,816	0	0	311,816
Hawaii	150,439	142,989	7,450	1,331,580	16,699	222,428	1,570,707
Idaho	148,732	128,525	20,207	1,151,879	181,101	63,085	1,396,065
Illinois	1,291,958	1,264,971	26,987	11,337,047	241,866	0	11,578,913
Indiana	559,484	547,192	12,292	4,904,098	110,165	0	5,014,263
Iowa	258,008	253,929	4,079	2,275,787	36,557	0	2,312,344
Kansas	257,829	256,544	1,285	2,299,224	11,517	0	2,310,741
Kentucky	621,096	616,495	4,601	5,525,211	0	0	5,525,211
Louisiana	851,113	848,136	2,977	7,601,248	0	0	7,601,248
Maine	135,501	127,741	7,760	1,144,853	121,009	77,787	1,343,649
Maryland	438,676	428,847	9,829	3,843,455	112,145	0	3,955,600
Massachusetts	573,421	571,622	1,799	5,123,047	0	0	5,123,047
Michigan	1,021,605	956,530	65,075	8,572,707	583,222	159,845	9,315,774
Micronesia	178,317	178,317	0	1,598,130	0	0	1,598,130
Minnesota	380,476	358,846	21,630	3,216,085	306,161	232,054	3,754,300
Mississippi	548,079	541,909	6,170	4,856,750	0	80,718	4,937,468
Missouri	637,891	629,084	8,807	5,638,038	78,931	0	5,716,969
Montana	128,355	122,454	5,901	1,097,469	52,886	154,612	1,304,967
Nebraska	161,269	156,698	4,571	1,404,374	40,967	32,097	1,477,438
Nevada	205,685	205,413	272	1,840,972	2,438	129,120	1,972,530
New Hampshire	78,530	77,455	1,075	694,175	0	0	694,175
New Jersey	699,668	686,623	13,045	6,153,720	116,913	0	6,270,633
New Mexico	328,933	319,491	9,442	2,863,373	84,622	473,232	3,421,227
New York	2,692,202	2,662,277	29,925	23,860,121	268,197	0	24,128,318
North Carolina	958,667	900,725	57,942	8,072,566	519,293	211,921	8,803,780
North Dakota	73,457	60,926	12,531	546,037	0	261,564	807,601
Ohio	1,170,698	1,157,080	13,618	10,370,096	122,049	0	10,492,145
Oklahoma	491,235	484,470	6,765	4,341,964	60,630	795,057	5,197,651
Oregon	388,740	328,520	60,220	2,944,294	539,710	179,250	3,663,254
Pennsylvania	1,304,117	1,286,199	17,918	11,527,297	160,586	0	11,687,883
Puerto Rico	1,818,687	1,787,255	31,432	16,017,912	281,703	0	16,299,615
Rhode Island	120,548	120,357	191	1,078,675	0	0	1,078,675
South Carolina	547,869	526,485	21,384	4,718,515	191,650	0	4,910,165
South Dakota	95,900	95,471	429	855,640	3,845	906,639	1,766,124
Tennessee	746,789	739,932	6,857	6,631,492	0	0	6,631,492
Texas	3,117,609	2,967,441	150,168	26,595,091	1,638,979	30,390	28,264,460
Utah	206,328	198,995	7,333	1,783,452	65,720	79,886	1,929,058
Vermont	55,506	54,630	876	489,610	0	0	489,610
Virgin Islands	34,931	34,931	0	313,062	0	0	313,062
Virginia	656,641	639,590	17,051	5,732,195	152,816	0	5,885,011
Washington	612,370	533,459	78,911	4,781,018	707,224	276,611	5,764,853
West Virginia	315,794	311,842	3,952	2,794,821	35,419	0	2,830,240
Wisconsin	451,538	441,695	9,843	3,958,602	88,216	150,626	4,197,444
Wyoming	54,777	53,432	1,345	478,874	12,054	167,794	658,722
<b>Total</b>	<b>36,013,627</b>	<b>34,776,120</b>	<b>1,237,507</b>	<b>311,724,017</b>	<b>11,040,836</b>	<b>9,313,752</b>	<b>332,078,605</b>

\* State includes territories and other jurisdictions.

<sup>6</sup> Funding for Basic Field – Native American service areas is not calculated by Native American poverty population. In many instances, accurate Native American poverty population figures are not available. Native American service areas are not always by county or other political subdivision. These service areas are sometimes described by language such as: Native Americans living in or near the \_\_\_ Reservation and members of the \_\_\_\_\_ Tribe living off reservation who have cases which require litigation in the Tribal Court.

**Source: LSC Funding Tables – 2008**



**2008 LSC and Non-LSC Funding Received by LSC-Funded Programs by State<sup>17</sup>**

	LSC Basic Field Grants	LSC Derivative Income	Other LSC Funds	LSC Total	Other Federal Grants	State and Local Grants	IOLTA	Private Grants	Non-LSC Derivative Income	Other Non-LSC Funds	Non-LSC Total	LSC & Non-LSC Total	Non-LSC %
Alabama	6,256,553	7,132	127,384	6,391,069	612,982	15,000	200,000	55,000	0	121,565	1,004,547	7,395,616	13.6
Alaska	1,245,754	64,045	0	1,309,799	372,660	620,865	61,063	1,852	57,819	448,131	1,562,390	2,872,189	54.4
Arizona	9,414,443	381,455	206,848	10,002,746	494,128	1,724,413	1,073,275	771,914	567,137	415,998	5,046,865	15,049,611	33.5
Arkansas	3,690,468	126,321	148,640	3,965,429	155,984	680,326	567,728	99,429	115,464	338,414	1,957,345	5,922,774	33.0
California	43,035,620	2,434,270	502,249	45,972,139	6,444,580	14,853,527	6,730,827	8,232,538	2,061,313	5,781,485	44,104,270	90,076,409	49.0
Colorado	3,579,156	3,204	70,000	3,652,360	1,206,760	994,066	2,593,213	1,429,350	3,266,663	122,881	9,612,933	13,265,293	72.5
Connecticut	2,324,902	178,486	7,000	2,510,388	0	20,268	650,004	0	0	68,676	738,948	3,249,336	22.7
Delaware	626,474	3,277	15,812	645,563	46,146	0	353,500	0	0	182,918	582,564	1,228,127	47.4
District of Columbia	981,372	17,878	0	999,250	0	0	86,250	0	628,954	735,048	1,450,252	2,449,502	59.2
Florida	17,500,042	1,092,670	545,612	19,138,324	3,125,387	6,233,809	5,550,177	516,935	2,069,606	2,148,590	19,644,504	38,782,828	50.7
Georgia	9,265,161	30,556	51,027	9,346,744	2,807,378	3,467,206	3,500,000	2,838,750	81,319	1,467,541	14,162,194	23,508,938	60.2
Guam	311,816	255	62	312,133	613,087	0	0	0	0	1,091	614,178	926,311	66.3
Hawaii	1,570,707	0	44,298	1,615,005	1,399,393	3,212,136	110,000	1,071	280,000	514,778	5,517,378	7,132,383	77.4
Idaho	1,396,065	0	10,100	1,406,165	505,018	12,037	190,130	68,500	155,000	24,000	954,685	2,360,850	40.4
Illinois	11,578,913	540,167	75,028	12,194,108	3,619,680	3,831,135	4,729,508	4,116,061	0	2,732,882	19,029,266	31,223,374	60.9
Indiana	5,014,263	454,131	185	5,468,579	577,953	945,517	0	338,903	526,970	704,123	3,093,466	8,562,045	36.1
Iowa	2,312,344	77,850	0	2,390,194	941,135	2,310,254	866,471	1,279,002	0	425,826	5,822,688	8,212,882	70.9
Kansas	2,310,741	8,989	0	2,319,730	1,277,974	3,959,989	120,688	528,621	0	140,373	6,027,645	8,347,375	72.2
Kentucky	5,566,446	617,802	83,263	6,267,511	1,473,127	4,967,331	1,099,397	984,346	2,206,018	869,923	11,600,142	17,867,653	64.9
Louisiana	7,627,929	438,996	107,821	8,174,746	1,343,144	1,173,366	1,073,381	629,919	854,719	432,354	5,506,883	13,681,629	40.3
Maine	1,328,448	0	46,774	1,375,222	436,179	1,293,668	523,879	496,342	1,541,521	539,954	4,831,543	6,206,765	77.8
Maryland	3,931,545	14,662	27,500	3,973,707	432,191	7,959,352	8,658,763	862,088	0	529,672	18,442,066	22,415,773	82.3
Massachusetts	5,123,047	296,689	46,966	5,466,702	91,357	59,808	447,485	155,556	494,121	518,287	1,766,614	7,233,316	24.4
Michigan	9,315,774	404,473	50,903	9,771,150	1,255,717	2,592,439	1,049,720	6,747,576	1,387,895	903,025	13,936,372	23,707,522	58.8
Micronesia	1,598,130	11,618	15,000	1,624,748	0	663,866	0	7,400	0	23,984	695,250	2,319,998	30.0
Minnesota	3,641,993	57,381	5,857	3,705,231	1,157,307	8,518,134	1,307,520	1,046,257	908,382	1,426,526	14,364,126	18,069,357	79.5
Mississippi	4,992,765	328,562	5,050	5,326,377	593,559	810,843	1,465,119	69,670	114,934	5,030	3,059,155	8,385,532	36.5
Missouri	5,716,969	48,432	27,657	5,793,058	1,248,913	4,657,291	1,330,967	2,842,464	641,691	1,460,749	12,182,075	17,975,133	67.8
Montana	1,304,967	7,412	92,000	1,404,379	937,201	6,822	593,000	89,440	0	336,209	1,962,672	3,367,051	58.3
Nebraska	1,477,438	0	0	1,477,438	0	606,918	200,000	0	0	0	806,918	2,284,356	35.3
Nevada	1,972,530	80,841	750	2,054,121	164,967	339,984	120,000	22,144	0	45,331	692,426	2,746,547	25.2
New Hampshire	694,175	166	12,500	706,841	40,000	0	60,000	0	0	72,530	172,530	879,371	19.6
New Jersey	6,270,633	734,931	0	7,005,564	2,311,477	17,691,780	16,014,544	288,944	3,478,874	2,224,458	42,010,077	49,015,641	85.7
New Mexico	3,421,227	692,699	28,460	4,142,386	135,224	2,002,438	0	223,851	0	19,953	2,381,466	6,523,852	36.5
New York	24,128,318	1,502,463	197,873	25,828,654	5,319,680	31,909,925	9,162,755	5,758,013	11,066,359	1,774,992	64,991,724	90,820,378	71.6
North Carolina	8,803,780	970,347	182,108	9,956,235	804,348	6,054,705	2,230,000	1,246,161	1,081,128	1,120,095	12,536,437	22,492,672	55.7

## 2008 LSC and Non-LSC Funding Received by LSC-Funded Programs by State<sup>[7]</sup>

	LSC Basic Field Grants	LSC Derivative Income	Other LSC Funds	LSC Total	Other Federal Grants	State and Local Grants	IOLTA	Private Grants	Non-LSC Derivative Income	Other Non-LSC Funds	Non-LSC Total	LSC & Non-LSC Total	Non-LSC %
North Dakota	919,908	70,035	20,753	1,010,696	308,600	424,214	53,500	187,671	0	4,100	978,085	1,988,781	49.2
Ohio	10,492,145	10,979	267,352	10,770,476	3,288,806	5,308,149	19,793,065	2,860,726	14,257,870	2,275,985	47,784,601	58,555,077	81.6
Oklahoma	5,197,651	452,433	20,113	5,670,197	677,194	1,868,969	514,250	749,655	1,583,113	465,115	5,858,296	11,528,493	50.8
Oregon	3,663,254	22,302	0	3,685,556	553,052	2,608,729	704,439	416,837	322	481,449	4,764,828	8,450,384	56.4
Pennsylvania	11,687,883	1,002,535	22,044	12,712,462	5,108,071	10,621,672	4,133,662	1,186,889	3,601,333	1,606,932	26,258,559	38,971,021	67.4
Puerto Rico	16,299,615	45,807	409,541	16,754,963	230,027	3,662,937	0	0	185,316	15,229	4,093,509	20,848,472	19.6
Rhode Island	1,078,675	0	0	1,078,675	465,568	1,169,803	975,680	46,000	0	113,052	2,770,103	3,848,778	72.0
South Carolina	4,910,165	390,005	358,902	5,659,072	354,788	1,769,971	2,332,691	115,960	310,323	72,941	4,956,674	10,615,746	46.7
South Dakota	1,766,124	113,357	21,426	1,900,907	373,920	10,729	31,000	185,202	14,981	197,906	813,738	2,714,645	30.0
Tennessee	6,692,946	179,383	478,453	7,350,782	4,192,201	4,538,495	677,600	618,258	650,444	1,666,511	12,343,509	19,694,291	62.7
Texas	27,971,331	2,056,677	133,856	30,161,864	1,507,150	4,450,753	6,396,201	1,418,123	1,414,036	7,176,031	22,362,294	52,524,158	42.6
Utah	1,929,058	43,616	22,500	1,995,174	567,808	350,914	60,000	408,220	537,069	13,889	1,937,900	3,933,074	49.3
Vermont	489,610	53,250	64,315	607,175	0	0	54,000	5,000	0	5,567	64,567	671,742	9.6
Virgin Islands	313,062	0	0	313,062	263,718	902,915	112,500	57,500	0	10,500	1,347,133	1,660,195	81.1
Virginia	5,885,011	201,755	7,206	6,093,972	583,522	5,592,126	1,431,221	559,476	2,409,776	432,773	11,008,894	17,102,866	64.4
Washington	5,764,853	582,117	301,418	6,648,388	550,979	12,393,297	378,750	107,107	1,895,281	108,382	15,433,796	22,082,184	69.9
West Virginia	2,830,240	4,455	55,515	2,890,210	281,199	3,617,609	325,124	249,243	0	186,779	4,659,954	7,550,164	61.7
Wisconsin	4,197,444	790,956	2,819	4,991,219	1,614,633	658,532	1,104,683	208,179	1,467,703	967,758	6,021,488	11,012,707	54.7
Wyoming	658,722	0	0	658,722	0	0	0	0	0	0	0	658,722	0.0
	<b>332,078,605</b>	<b>17,647,822</b>	<b>4,920,940</b>	<b>354,647,367</b>	<b>62,865,872</b>	<b>194,139,032</b>	<b>111,797,730</b>	<b>51,128,143</b>	<b>61,913,454</b>	<b>44,478,291</b>	<b>526,322,522</b>	<b>880,969,889</b>	<b>59.7</b>

<sup>[7]</sup> LSC Derivative Income includes LSC interest/investment income, publication income, and carryover funds.

Other LSC Funds includes LSC funding other than Basic Field, such as Technology Initiative Grants (TIG) and Emergency Grants

Other Federal Grants includes Title XX, Older Americans Act, Violence Against Women Act, other federal and community development block grants

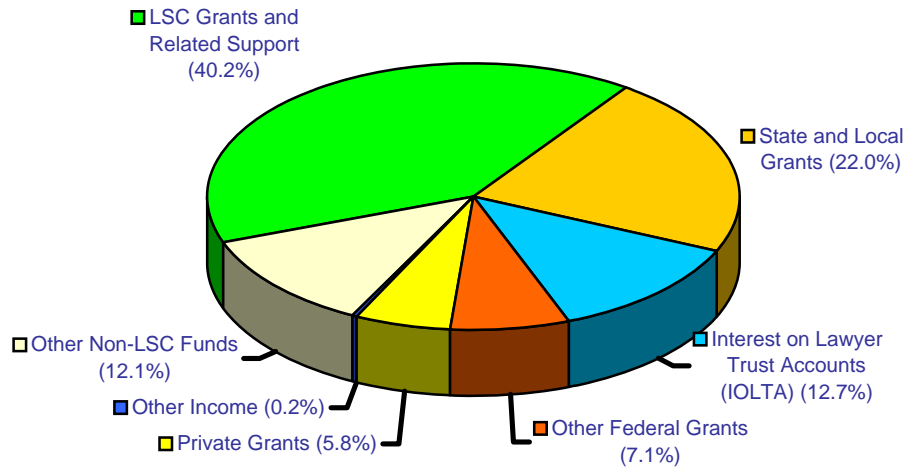
IOLTA also includes filing fees distributed to LSC programs through State IOLTA funders

Private Grants includes United Way, private foundation and bar association grants.

Non-LSC Derivative Income includes publication income and carryover funds.

Source: LSC Funding Tables and Grant Activity Reports – 2008

## 2008 LSC and Non-LSC Funding Summary



Funding Type <sup>[8]</sup>	Amount (\$)	Percent*
LSC Grants and Related Support	354,647,367	40.2%
State and Local Grants	194,139,032	22.0%
Interest on Lawyer Trust Accounts (IOLTA)	111,797,730	12.7%
Other Federal Grants	62,865,872	7.1%
Private Grants	51,128,143	5.8%
Other Non-LSC Funds	106,391,745	12.1%
Other Income	1,743,518	0.2%
<b>Total</b>	<b>882,713,407</b>	<b>100.0%</b>

\* Percentages do not total exactly because of rounding.

[8] **LSC Grants and Related Support** includes LSC Basic Field grants, interest/investment income, publication income, carryover funds, and other LSC funds.

**IOLTA** also includes filing fees distributed to LSC programs through State IOLTA funders

**Other Federal Grants** includes Title XX, Older Americans Act, Violence Against Women Act, other federal and community development block grants.

**Private Grants** includes United Way, private foundation and bar association grants.

**Other Non-LSC Funds** includes publication income, carryover and other non-LSC funds.

**Other Income** includes gross fees and receipts from client services.

**Source:** *LSC Funding Tables and Grant Activity Reports – 2008*

## 2008 LSC and Non-LSC Funding Summary

Amount \$	Percent of Programs' Total Funding*
--------------	--

### LSC FUNDING SOURCES:

<b>Basic Field Grants</b>	332,078,605	37.6%
<b>LSC Derivative Income</b>		
Interest/Investment Income	1,171,956	0.1%
Attorney Fee Awards - LSC Case(s) <sup>9]</sup>	22,400	0.0%
Publication Income	9,023	0.0%
Carryover Funds	16,444,443	1.9%
<b>Other LSC Funds</b>	4,920,940	0.6%
<b>Subtotal LSC Sources:</b>	<b>354,647,367</b>	<b>40.2%</b>

### NON - LSC FUNDING SOURCES:

<b>Other Federal Grants</b>		
Title XX of Social Security Act	4,742,101	0.5%
Older Americans Act	19,830,063	2.2%
Violence Against Women Act	11,311,064	1.3%
Other Federal Grants	22,910,430	2.6%
Community Development Block Grants	4,072,214	0.5%
<b>State and Local Grants</b>		
State Grants	145,930,991	16.5%
Local Grants	48,208,041	5.5%
<b>Private Grants</b>		
United Way	13,886,526	1.6%
Foundation Grants	31,355,429	3.6%
Bar Association Grants	5,886,188	0.7%
<b>IOLTA</b>	111,797,730	12.7%
<b>Non-LSC Derivative Income</b>		
Attorney Fee Awards <sup>9]</sup>	253,824	0.0%
Publication Income	309,099	0.0%
Carryover Funds	61,350,531	7.0%
<b>Other Non-LSC Funds</b>	44,478,291	5.0%
<b>Subtotal NON-LSC Sources:</b>	<b>526,322,522</b>	<b>59.6%</b>

### OTHER INCOME:

<b>Fees &amp; Receipts from Client Services</b>	1,431,009	0.2%
<b>Other Income</b>	312,509	0.0%
<b>Subtotal Client Service Income:</b>	<b>1,743,518</b>	<b>0.2%</b>

<b>TOTAL CASH RESOURCES:</b>	<b>882,713,407</b>	<b>100.0%</b>
------------------------------	--------------------	---------------

\* Percentages do not total exactly because of rounding.

<sup>9</sup> Refers to cases on which work was performed prior to 4/24/96.

**Source: Grant Activity Reports - 2008**

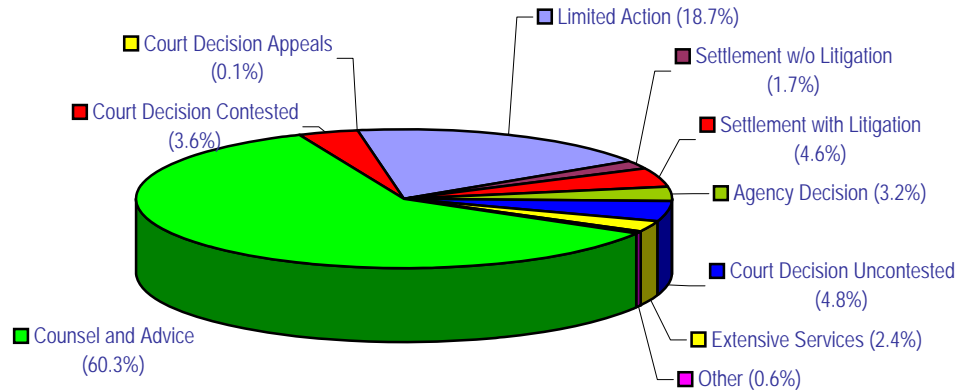
# Client Services

## 2000 – 2008 Total LSC-Eligible Cases Closed by LSC-Funded Programs

Basic Field - General							
Program Staff	Private Attorneys	Totals	Basic Field Nat. American	Basic Field Migrant	Totals	Change From Prior Year	
2000	873,199	121,030	994,229	11,481	6,658	1,012,368	
2001	877,492	118,749	996,241	10,334	7,538	1,014,113	0.2%
2002	847,642	114,632	962,274	10,053	6,507	978,834	-3.5%
2003	806,735	112,300	919,035	9,986	6,772	935,793	-4.4%
2004	782,793	102,256	885,049	10,527	5,491	901,067	-3.7%
2005	792,644	97,493	890,137	10,967	5,234	906,338	0.6%
2006	786,923	93,922	880,845	9,796	4,847	895,488	-1.2%
2007	793,997	97,531	891,528	9,716	5,263	906,507	1.2%
2008	781,501	93,174	874,675	9,552	4,928	889,155	-1.9%

**Source: Grant Activity Reports- 2008**

## 2008 LSC-Eligible Case Services Summary by Reason for Closure



Reason for Closure <sup>10</sup>	Total Closed Cases	Percent
Counsel and Advice (60.3%)	535,783	60.3%
Limited Action (18.7%)	166,306	18.7%
Settlement w/o Litigation (1.7%)	15,409	1.7%
Settlement with Litigation (4.6%)	41,282	4.6%
Agency Decision (3.2%)	28,574	3.2%
Court Decision Uncontested (4.8%)	42,552	4.8%
Court Decision Contested (3.6%)	31,668	3.6%
Court Decision Appeals (0.1%)	452	0.1%
Extensive Services (2.4%)	21,516	2.4%
Other Closure Method (0.6%)	5,613	0.6%
<b>Total</b>	<b>889,155</b>	<b>100.0%</b>

<sup>10</sup> LSC significantly revised/updated the criteria for case reporting/closure in the 2008 CSR Handbook. Four categories -- C-Referred After Legal Assessment, D-Insufficient Merit, E-Client Withdrew, J-Change in Eligibility -- were discontinued. One, L-Extensive Service, was added, and the title of one, B-Brief Service, was changed to Limited Action. See descriptions below of these two and of Counsel and Advice.

**Counsel and Advice** -A case closed in which the program provided legal advice to an eligible client should be closed as Counsel and Advice (e.g., the advocate ascertained and reviewed relevant facts, exercised judgment in interpreting the particular facts presented by the client and in applying the relevant law to the facts presented, and counseled the client concerning his or her legal problem).

**Limited Action** - A case closed in which the program took limited action(s) on behalf of an eligible client that addressed the client's legal problem that is not so complex or extended as to meet the requirements for CSR Category L should be closed as Limited Action. Examples include, communications by letter, telephone or other means to a third party; preparation of a simple legal document such as a routine will or power of attorney

**Extensive Service** - A case closed in which the program undertook extensive research, preparation of complex legal documents, extensive interaction with third parties on behalf of an eligible client, or extensive on-going assistance to clients who are proceeding pro se should be closed as Extensive Service. Some examples of extensive service include preparation of complex advance directives, wills, contracts, real estate documents or other legal documents, or the provision of extensive transactional work.

**Source: Grant Activity Reports – 2008**

## 2008 LSC-Eligible Cases Closed by Case Type and Reason for Closure

	Counsel And Advice	Limited Action	Negotiated Settlement w/o Litig.	Negotiated Settlement with Litig.	Admin Agency Decision	Uncontested Court Decision	Contested Court Decision	Appeals	Other	Extensive Service	Total	Percent*
<b>CONSUMER/FINANCE</b>												
01 – Bankruptcy/Debtor Relief	24,358	1,857	70	122	50	3,675	570	1	311	639	31,653	3.6%
02 – Collection (Including Repossession/Deficiency/Garnishment)	35,703	7,430	1,000	2,283	62	1,067	1,522	12	399	941	50,419	5.7%
03 – Contracts/Warranties	6,344	1,017	253	167	15	78	114	3	41	126	8,158	0.9%
04 – Collection Practices/Creditor Harassment	2,326	897	115	53	7	40	36	0	12	47	3,533	0.4%
05 – Predatory Lending Practices (Not Mortgages)	138	33	12	4	1	1	4	0	0	1	194	0.0%
06 – Loans/Installment Purchase (Not Collections)	891	256	37	22	10	7	11	2	11	31	1,278	0.1%
07 – Public Utilities	2,760	1,304	221	25	24	13	16	0	16	103	4,482	0.5%
08 – Unfair and Deceptive Sales & Practices (Not Real Property)	1,093	199	55	26	0	7	13	0	3	20	1,416	0.2%
09 – Other Consumer/Finance	5,322	1,238	156	136	33	64	71	2	59	190	7,271	0.8%
	<b>78,935</b>	<b>14,231</b>	<b>1,919</b>	<b>2,838</b>	<b>202</b>	<b>4,952</b>	<b>2,357</b>	<b>20</b>	<b>852</b>	<b>2,098</b>	<b>108,404</b>	<b>12.2%</b>
<b>EDUCATION</b>												
12 – Discipline (Including Expulsion and Suspension)	532	149	119	37	137	1	7	1	7	36	1,026	0.1%
13 – Special Education/Learning Disabilities	703	246	365	78	102	2	5	3	8	117	1,629	0.2%
14 – Access (Including Bilingual, Residency, Testing)	194	392	63	5	12	5	3	1	4	20	699	0.1%
15 – Vocational Education	44	110	3	6	8	5	0	0	1	9	186	0.0%
16 – Student Financial Aid	312	400	10	2	47	0	2	0	2	9	784	0.1%
19 – Other Education	792	1,483	93	20	27	14	5	1	40	40	2,515	0.3%
	<b>2,577</b>	<b>2,780</b>	<b>653</b>	<b>148</b>	<b>333</b>	<b>27</b>	<b>22</b>	<b>6</b>	<b>62</b>	<b>231</b>	<b>6,839</b>	<b>0.8%</b>
<b>EMPLOYMENT</b>												
21 – Employment Discrimination	2,761	192	51	56	38	16	14	14	7	77	3,226	0.4%
22 – Wage Claims and other FLSA Issues	1,976	720	288	508	142	88	98	1	49	51	3,921	0.4%
23 – EITC (Earned Income Tax Credit)	644	956	33	14	62	10	2	2	6	198	1,927	0.2%
24 – Taxes (Not EITC)	1,577	1,279	122	22	246	14	10	0	43	343	3,656	0.4%
25 – Employee Rights	2,641	195	12	41	45	1	0	1	11	7	2,954	0.3%
26 – Agricultural Worker Issues (Not Wage Claims/FLSA Issues)	118	128	21	25	8	1	24	0	8	8	341	0.0%
29 – Other Employment	7,285	2,449	130	145	239	327	79	5	88	124	10,871	1.2%
	<b>17,002</b>	<b>5,919</b>	<b>657</b>	<b>811</b>	<b>780</b>	<b>457</b>	<b>227</b>	<b>23</b>	<b>212</b>	<b>808</b>	<b>26,896</b>	<b>3.0%</b>
<b>FAMILY</b>												
30 Adoption	1,666	163	9	24	5	821	83	3	51	75	2,900	0.3%
31 Custody/Visitation	65,344	9,024	396	4,451	41	3,185	4,638	27	474	1,476	89,056	10.0%
32 Divorce/Separation	74,727	13,046	435	4,473	66	15,686	5,415	25	1,115	4,427	119,415	13.4%
33 Guardianship	3,436	1,381	43	86	9	1,186	231	1	103	146	6,622	0.7%
34 Name Change	1,819	910	4	5	10	802	42	0	22	40	3,654	0.4%
35 Parental Rights Termination	1,381	83	1	27	5	53	69	2	5	17	1,643	0.2%
36 Paternity	4,215	1,021	16	142	34	305	338	3	26	145	6,245	0.7%
37 Domestic Abuse	16,256	4,059	318	6,799	23	7,797	6,972	34	206	2,255	44,719	5.0%
38 Support	21,235	2,428	137	1,055	104	706	1,976	14	132	454	28,241	3.2%
39 Other Family	6,518	1,884	87	197	44	328	288	26	55	124	9,551	1.1%
	<b>196,597</b>	<b>33,999</b>	<b>1,446</b>	<b>17,259</b>	<b>341</b>	<b>30,869</b>	<b>20,052</b>	<b>135</b>	<b>2,189</b>	<b>9,159</b>	<b>312,046</b>	<b>35.1%</b>



## 2008 LSC-Eligible Cases Closed by Case Type and Reason for Closure (cont'd)

	Counsel And Advice	Limited Action	Negotiated Settlement w/o Litig.	Negotiated Settlement with Litig.	Admin Agency Decision	Uncontested Court Decision	Contested Court Decision	Appeals	Other	Extensive Service	Total	Percent*
<b>JUVENILE</b>												
41 – Delinquent	395	29	73	822	3	266	893	1	2	45	2,529	0.3%
42 – Neglected/Abused/Dependent	1,564	153	21	331	27	958	1,117	10	40	113	4,334	0.5%
43 – Emancipation	779	502	5	1	12	165	9	0	4	67	1,544	0.2%
44 – Minor Guardian/Conservatorship	3,156	1,095	14	66	1	747	146	1	14	337	5,577	0.6%
49 – Other Juvenile	790	57	17	96	18	62	102	2	5	10	1,159	0.1%
	<b>6,684</b>	<b>1,836</b>	<b>130</b>	<b>1,316</b>	<b>61</b>	<b>2,198</b>	<b>2,267</b>	<b>14</b>	<b>65</b>	<b>572</b>	<b>15,143</b>	<b>1.7%</b>
<b>HEALTH</b>												
51 – Medicaid	8,653	6,266	929	548	1,849	27	34	16	110	643	19,075	2.1%
52 – Medicare	881	1,057	54	8	63	0	0	1	10	55	2,129	0.2%
53 – Government Children's Health Insurance Prog.	143	191	34	17	21	0	1	2	0	8	417	0.0%
54 – Home and Community Based Care	197	159	14	17	42	5	8	0	2	29	473	0.1%
55 – Private Health Insurance	177	72	9	4	3	0	2	0	2	5	274	0.0%
56 – Long Term Health Care Facilities	207	116	18	14	28	0	3	0	3	16	405	0.0%
57 – State and Local Health	1,480	826	12	9	15	1	1	1	2	12	2,359	0.3%
59 – Other Health	2,035	3,062	125	90	149	10	13	4	45	137	5,670	0.6%
	<b>13,773</b>	<b>11,749</b>	<b>1,195</b>	<b>707</b>	<b>2,170</b>	<b>43</b>	<b>62</b>	<b>24</b>	<b>174</b>	<b>905</b>	<b>30,802</b>	<b>3.5%</b>
<b>HOUSING</b>												
61 – Federally Subsidized Housing	22,592	11,729	2,250	4,133	1,614	457	1,311	36	154	614	44,890	5.0%
62 – Homeownership/Real Property (Not Foreclosure)	7,891	2,552	409	472	68	196	349	5	118	513	12,573	1.4%
63 – Private Landlord/Tenant	86,353	17,014	1,898	9,582	142	1,125	3,337	37	385	746	120,619	13.6%
64 – Public Housing	6,650	13,561	683	1,089	534	161	391	8	54	176	23,307	2.6%
65 – Mobile Homes	2,040	382	82	172	6	22	72	1	11	45	2,833	0.3%
66 – Housing Discrimination	431	107	72	25	16	1	7	0	9	26	694	0.1%
67 – Mortgage Foreclosures (Not Predatory Lending/Practices)	7,506	1,374	192	323	7	64	168	4	42	240	9,920	1.1%
68 – Mortgage Predatory Lending/Practices	891	160	42	72	1	6	13	1	13	54	1,253	0.1%
69 – Other Housing	7,856	3,937	399	343	117	191	240	4	59	277	13,423	1.5%
	<b>142,210</b>	<b>50,816</b>	<b>6,027</b>	<b>16,211</b>	<b>2,505</b>	<b>2,223</b>	<b>5,888</b>	<b>96</b>	<b>845</b>	<b>2,691</b>	<b>229,512</b>	<b>25.8%</b>
<b>INCOME</b>												
71 – TANF	5,375	3,189	1,015	735	1,256	11	20	9	77	307	11,994	1.3%
72 – Social Security (Not SSDI)	1,846	657	53	6	335	64	32	0	15	83	3,091	0.3%
73 – Food Stamps	6,964	4,248	692	347	545	7	2	4	36	173	13,018	1.5%
74 – SSDI	7,387	1,598	161	35	2,097	18	21	5	77	330	11,729	1.3%
75 – SSI	15,063	4,361	304	71	11,386	34	56	37	252	1,809	33,373	3.8%
76 – Unemployment Compensation	9,080	1,374	70	40	4,160	48	204	38	38	102	15,154	1.7%
77 – Veterans Benefits	380	105	5	3	38	3	0	0	3	21	558	0.1%
78 – State and Local Income Maintenance	1,669	1,249	175	180	179	1	4	1	11	59	3,528	0.4%
79 – Other Income Maintenance	2,628	2,273	310	95	262	84	25	2	15	118	5,812	0.7%
	<b>50,392</b>	<b>19,054</b>	<b>2,785</b>	<b>1,512</b>	<b>20,258</b>	<b>270</b>	<b>364</b>	<b>96</b>	<b>524</b>	<b>3,002</b>	<b>98,257</b>	<b>11.1%</b>

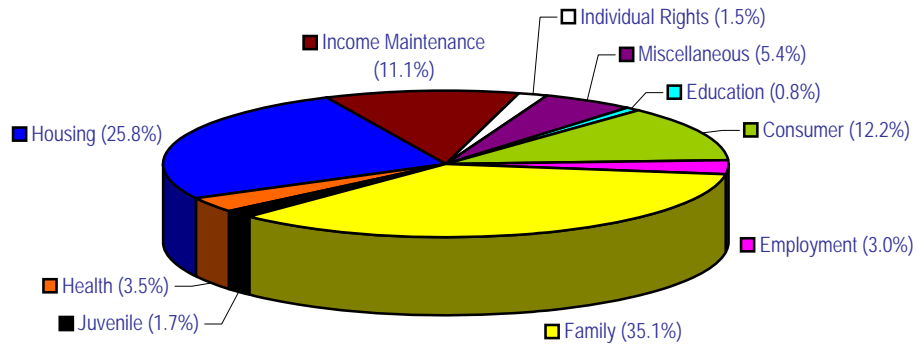
## 2008 LSC-Eligible Cases Closed by Case Type and Reason for Closure (cont'd)

	Counsel And Advice	Limited Action	Negotiated Settlement w/o Litig.	Negotiated Settlement with Litig.	Admin Agency Decision	Uncontested Court Decision	Contested Court Decision	Appeals	Other	Extensive Service	Total	Percent*
<b>INDIVIDUAL</b>												
81 – Immigration/Naturalization	1,664	1,466	28	13	1,502	24	17	5	74	322	5,115	0.6%
82 – Mental Health	304	123	64	3	6	4	7	1	7	6	525	0.1%
84 – Disability Rights	226	106	20	5	26	1	1	1	3	17	406	0.0%
85 – Civil Rights	456	280	6	2	2	6	2	0	1	4	759	0.1%
86 – Human Trafficking	9	6	0	0	59	0	0	0	0	0	74	0.0%
89 – Other Individual Rights	3,816	1,920	95	28	50	219	125	4	29	85	6,371	0.7%
	6,475	3,901	213	51	1,645	254	152	11	114	434	13,250	1.5%
<b>MISC</b>												
91 – Legal Assistance to Non-Profit Org or Group ( Incl Incorp/Dissolution)	135	93	8	8	29	2	0	0	9	115	399	0.0%
92 – Indian/Tribal Law	552	269	23	182	26	83	55	2	8	111	1,311	0.1%
93 – Licenses (Drivers, Occupational, and Others)	1,852	3,188	31	36	31	45	15	3	33	53	5,287	0.6%
94 – Torts	2,649	312	34	78	2	40	68	1	37	35	3,256	0.4%
95 – Wills/Estates	8,117	7,461	90	42	23	924	70	9	219	943	17,898	2.0%
96 – Advance Directives/Powers of Attorney	1,783	7,264	102	2	2	6	3	0	110	240	9,512	1.1%
97 – Municipal Legal Needs	74	28	2	4	4	0	0	0	0	1	113	0.0%
99 – Other Miscellaneous	5,976	3,406	94	77	162	159	66	12	160	118	10,230	1.2%
	21,138	22,021	384	429	279	1,259	277	27	576	1,616	48,006	5.4%
<b>Totals</b>	<b>535,783</b>	<b>166,306</b>	<b>15,409</b>	<b>41,282</b>	<b>28,574</b>	<b>42,552</b>	<b>31,668</b>	<b>452</b>	<b>5,613</b>	<b>21,516</b>	<b>889,155</b>	
<b>Percentages</b>	<b>60.3%</b>	<b>18.7%</b>	<b>1.7%</b>	<b>4.6%</b>	<b>3.2%</b>	<b>4.8%</b>	<b>3.6%</b>	<b>0.1%</b>	<b>0.6%</b>	<b>2.4%</b>	<b>100.0%</b>	

\* Percentages do not total exactly because of rounding.

Source: Grant Activity Reports – 2008

## 2008 LSC-Eligible Case Services Summary by Case Type



Type of Case	Total Closed Cases	Percent*
Consumer	108,404	12.2%
Education	6,839	0.8%
Employment	26,896	3.0%
Family	312,046	35.1%
Juvenile	15,143	1.7%
Health	30,802	3.5%
Housing	229,512	25.8%
Income Maintenance	98,257	11.1%
Individual Rights	13,250	1.5%
Miscellaneous	48,006	5.4%
<b>Total</b>	<b>889,155</b>	<b>100.00%</b>

\* Percentages do not total exactly because of rounding.

**Source: Grant Activity Reports – 2008**

## 2008 LSC-Eligible Cases Closed by Case Type

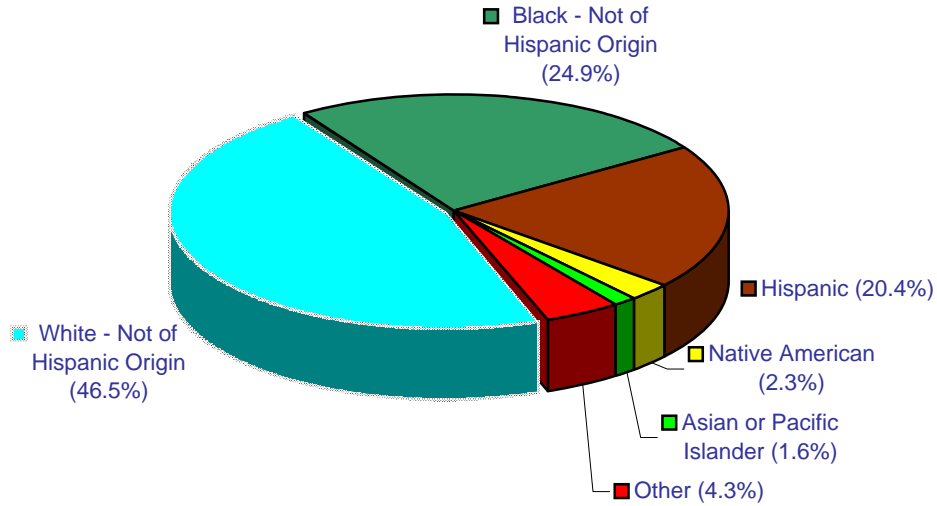
	Number of Cases	Percent*		Number of Cases	Percent*
<b>Consumer/Finance</b>			<b>Health</b>		
Bankruptcy/Debtor Relief	31,653	3.6%	Medicaid	19,075	2.1%
Collection (Incl Repossession/Deficiency/Garnishment)	50,419	5.7%	Medicare	2,129	0.2%
Contracts/Warranties	8,158	0.9%	Government Children's Health Insurance Programs	417	0.0%
Collection Practices/Creditor Harassment	3,533	0.4%	Home and Community Based Care	473	0.1%
Predatory Lending Practices (Not Mortgages)	194	0.0%	Private Health Insurance	274	0.0%
Loans/Installment Purchase (Not Collections)	1,278	0.1%	Long Term Health Care Facilities	405	0.0%
Public Utilities	4,482	0.5%	State and Local Health	2,359	0.3%
Unfair & Deceptive Sales & Prac (Not Real Property)	1,416	0.2%	Other Health	5,670	0.6%
Other Consumer/Finance	7,271	0.8%	<b>Total</b>	<b>30,802</b>	<b>3.5%</b>
<b>Total</b>	<b>108,404</b>	<b>12.2%</b>	<b>Housing</b>		
<b>Education</b>			Federally Subsidized Housing	44,890	5.0%
Discipline (Incl Expulsion and Suspension)	1,026	0.1%	Homeownership/Real Property (Not Foreclosure)	12,573	1.4%
Special Education/Learning Disabilities	1,629	0.2%	Private Landlord/Tenant	120,619	13.6%
Access (Including Bilingual, Residency, Testing)	699	0.1%	Public Housing	23,307	2.6%
Vocational Education	186	0.0%	Mobile Homes	2,833	0.3%
Student Financial Aid	784	0.1%	Housing Discrimination	694	0.1%
Other Education	2,515	0.3%	Mortgage Foreclosures (Not Predatory Lending/Practices)	9,920	1.1%
<b>Total</b>	<b>6,839</b>	<b>0.8%</b>	Mortgage Predatory Lending/Practices	1,253	0.1%
<b>Employment</b>			Other Housing	13,423	1.5%
Employment Discrimination	3,226	0.4%	<b>Total</b>	<b>229,512</b>	<b>25.8%</b>
Wage Claims and other FLSA Issues	3,921	0.4%	<b>Income Maintenance</b>		
EITC (Earned Income Tax Credit)	1,927	0.2%	TANF	11,994	1.3%
Taxes (Not EITC)	3,656	0.4%	Social Security (Not SSDI)	3,091	0.3%
Employee Rights	2,954	0.3%	Food Stamps	13,018	1.5%
Agricultural Worker Issues (Not Wage Claims/FLSA)	341	0.0%	SSDI	11,729	1.3%
Other Employment	10,871	1.2%	SSI	33,373	3.8%
<b>Total</b>	<b>26,896</b>	<b>3.0%</b>	Unemployment Compensation	15,154	1.7%
<b>Family</b>			Veterans Benefits	558	0.1%
Adoption	2,900	0.3%	State and Local Income Maintenance	3,528	0.4%
Custody/Visitation	89,056	10.0%	Other Income Maintenance	5,812	0.7%
Divorce/Separation	119,415	13.4%	<b>Total</b>	<b>98,257</b>	<b>11.1%</b>
Guardianship	6,622	0.7%	<b>Individual Rights</b>		
Name Change	3,654	0.4%	Immigration/Naturalization	5,115	0.6%
Parental Rights Termination	1,643	0.2%	Mental Health	525	0.1%
Paternity	6,245	0.7%	Disability Rights	406	0.0%
Domestic Abuse	44,719	5.0%	Civil Rights	759	0.1%
Support	28,241	3.2%	Human Trafficking	74	0.0%
Other Family	9,551	1.1%	Other Individual Rights	6,371	0.7%
<b>Total</b>	<b>312,046</b>	<b>35.1%</b>	<b>Total</b>	<b>13,250</b>	<b>1.5%</b>
<b>Juvenile</b>			<b>Miscellaneous</b>		
Delinquent	2,529	0.3%	Lgl Assist to Non-Profit Org or Grp (Incl Incorp/Dissol)	399	0.0%
Neglected/Abused/Dependent	4,334	0.5%	Indian/Tribal Law	1,311	0.1%
Emancipation	1,544	0.2%	Licenses (Drivers, Occupational, and Others)	5,287	0.6%
Minor Guardian/Conservatorship	5,577	0.6%	Torts	3,256	0.4%
Other Juvenile	1,159	0.1%	Wills/Estates	17,898	2.0%
<b>Total</b>	<b>15,143</b>	<b>1.7%</b>	Advance Directives/Powers of Attorney	9,512	1.1%
			Municipal Legal Needs	113	0.0%
			Other Miscellaneous	10,230	1.2%
			<b>Total</b>	<b>48,006</b>	<b>5.4%</b>
			<b>Total</b>	<b>889,155</b>	<b>100.0%</b>

\* Percentages do not total exactly because of rounding.

Source: Grant Activity Reports – 2008

# Client Demographics

## 2008 Ethnicity of LSC Clients

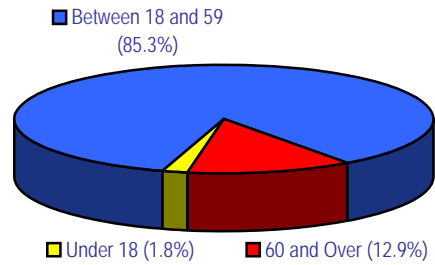


Ethnic Group	Total Individual Clients	Percent*
White - Not of Hispanic Origin	409,210	46.5%
Black - Not of Hispanic Origin	218,981	24.9%
Hispanic	179,692	20.4%
Native American	20,599	2.3%
Asian or Pacific Islander	14,031	1.6%
Other	38,008	4.3%
<b>Total</b>	<b>880,521</b>	<b>100.0%</b>

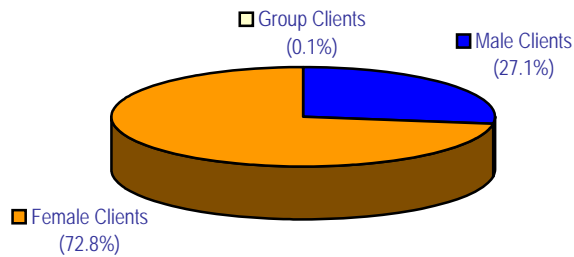
\* Percentages do not total exactly because of rounding.

**Source: Grant Activity Reports – 2008**

## 2008 Age and Gender of LSC Clients<sup>11</sup>



Age Group	Total Individual Clients	Percent
Under 18	16,194	1.8%
Between 18 and 59	750,976	85.3%
60 and Over	113,351	12.9%
<b>Total</b>	<b>880,521</b>	<b>100.0%</b>



Gender/Type	Total Clients	Percent
Male Clients	240,773	27.1%
Female Clients	646,325	72.8%
Group Clients	606	0.1%
<b>Total</b>	<b>887,704</b>	<b>100.0%</b>

<sup>11</sup> Totals by age are not equal to the totals by gender because a few programs were not able to provide complete information.

Source: Grant Activity Reports – 2008

## 2008 Age, Ethnicity and Gender of LSC Clients<sup>[12]</sup>

	<b>Under Age 18</b>	<b>Ages 18 through 59</b>	<b>Age 60 and Over</b>	<b>Total Individual Clients</b>
White - Not of Hispanic Origin	4,544	348,098	56,568	409,210
Black - Not of Hispanic Origin	3,650	190,840	24,491	218,981
Hispanic Origin	6,171	152,731	20,790	179,692
Native American	585	16,444	3,570	20,599
Asian or Pacific Islander	237	11,311	2,483	14,031
Other	1,007	31,552	5,449	38,008
<b>Total</b>	<b>16,194</b>	<b>750,976</b>	<b>113,351</b>	<b>880,521</b>

<b>Men</b>	240,773
<b>Women</b>	646,325
<b>Groups</b>	606
<b>Total</b>	<b>887,704</b>

<sup>12</sup> Totals by age and ethnicity are not equal to the totals by gender because a few programs were not able to provide complete information.

*Source: Grant Activity Reports – 2008*



# Private Attorney Involvement

## 2008 Private Attorney Involvement (PAI) for LSC Programs <sup>[13]</sup>

Component Type <sup>[14]</sup>	Cases Referred	Cases Closed	Attorneys Accepting Referrals
Pro Bono	58,791	57,719	26,749
Contract/Judicare	32,781	31,052	4,942
Other PAI	19,134	4,397	4,027
<b>Total</b>	<b>110,706</b>	<b>93,168</b>	<b>35,718</b>

**13 Private Attorney Involvement (PAI)** is an LSC program to involve private attorneys (those not working for an LSC grantee) in the delivery of legal services to low-income clients eligible for LSC-funded legal assistance. As provided in 45 C.F.R. 1614, LSC grantees are required to devote at least 12.5% of the amount of their LSC Basic Field-General funding to this method of delivery of legal services.

**14 Pro Bono** – PAI programs in which attorneys are recruited and assisted to provide legal services to eligible clients without compensation.

**Contract/Judicare** – PAI programs in which attorneys are compensated at a reduced rate to provide legal services to eligible clients, either

(1) Under a **contract** with the grantee program under which an attorney receives a reduced fee either for a single case or for a set number of cases.

(2) As a member of a “**Judicare**” panel where all private attorneys who practice in the service area are invited to participate. Attorneys may elect on a case-by-case basis whether to take a client. Under some models clients may choose among panel attorneys while under others, panel attorneys are assigned to a client by rotation.

**Other PAI** – Any PAI program not falling into the pro bono or contract/Judicare category, such as co-counseling arrangements with individual attorneys or law firms.

**Source: Grant Activity Reports – 2008**

## 2007 - 2008 PAI with Percentage Change for LSC Programs

### Pro Bono

	Cases Closed	Attorneys Accepting Referrals
2007	64,494	23,631
2008	57,719	26,749
Percentage Change	-10.5%	13.2%

### Contract/Judicare

	Cases Closed	Attorneys Accepting Referrals
2007	28,457	2,708
2008	31,052	4,942
Percentage Change	9.1%	82.5%

### Other PAI

	Cases Closed	Attorneys Accepting Referrals
2007	4,580	4,847
2008	4,397	4,027
Percentage Change	-4.0%	-16.9%

# Staffing

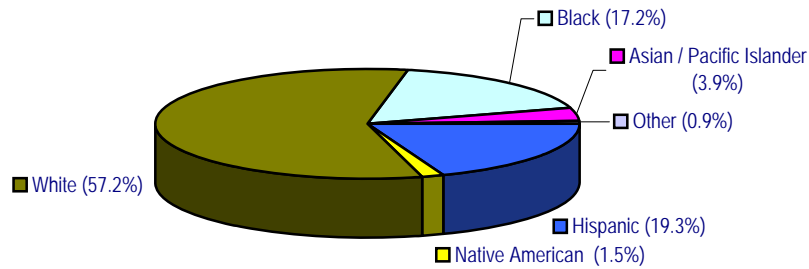
## 2008 Staffing Level with Average Salary and Experience for LSC Programs\*

Position	Full-time	Attorneys	Women	Men	Average Years In Profession	Average Salary
Executive Director	138	133	44	94	29.5	107,168
Deputy Director	88	77	44	44	27.7	96,939
Director of Litigation	76	76	25	51	27.5	87,912
Managing Attorney	669	669	361	308	20.9	70,330
Supervising Attorney	431	431	259	172	18.3	70,796
Staff Attorney	2,758	2,753	1,847	911	10.2	53,494
Paralegal	1,582	15	1,298	284	15.6	38,122
Information Technology Staff	122	11	32	90	13.4	53,274
PAI Coordinator	117	38	104	13	17.8	48,701
Training Responsible Person	6	2	6	0	15.7	51,476
Financial Professional	246	4	187	59	22.9	56,511
Management Professional	250	21	200	50	21.1	61,443
Law Clerk	102	5	66	36	0.8	24,046
Senior Aide	2	0	1	1	12.5	23,574
Administrative Assistant	352	0	337	15	21.1	39,097
Secretarial/Clerical	1,632	5	1,583	49	16.9	31,704
Other Position/Job	321	29	249	72	13.3	38,147
<b>Total / Average</b>	<b>8,892</b>	<b>4,269</b>	<b>6,643</b>	<b>2,249</b>	<b>15.5</b>	<b>49,193</b>

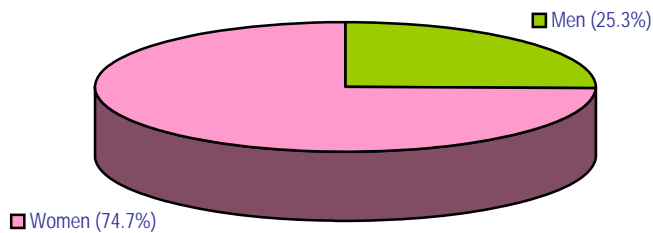
\* Figures include all full-time (90% and above) staff members who were employed for over 6 months in 2008 even if terminated prior to 12/31/08. Figures do not include sub-recipient staffing.

Source: Grant Activity Reports – 2008

## 2008 Staff Ethnicity and Gender for LSC Programs\*



Ethnic Group	Number of Staff	Percent
White	5,089	57.2%
Black	1,531	17.2%
Hispanic	1,716	19.3%
Native American	130	1.5%
Asian / Pacific Islander	343	3.9%
Other	83	0.9%
<b>Total</b>	<b>8,892</b>	<b>100.0%</b>



Gender	Number of Staff	Percent
Men	2,249	25.3%
Women	6,643	74.7%
<b>Total</b>	<b>8,892</b>	<b>100.0%</b>

\* Figures include all full-time (90% and above) staff members who were employed for over 6 months in 2008 even if terminated prior to 12/31/08. Figures do not include sub-recipient staffing.

Source: Grant Activity Reports – 2008

## 2008 Summary of Staff Positions by Job Classification, Ethnicity and Gender for LSC Programs\*

	White		Black		Hispanic		Native American		Asian/Pac		Other		Total		Total
	Male	Female	Male	Female	Male	Female	Male	Female	Male	Female	Male	Female	Male	Female	
01-Executive Director	74	25	11	10	6	5	1	2	2	2	0	0	94	44	138
03-Deputy Director	35	33	5	4	4	4	0	0	0	2	0	1	44	44	88
05-Director of Litigation	45	19	3	2	0	3	1	1	2	0	0	0	51	25	76
07-Managing Attorney	229	253	26	57	43	40	3	3	7	6	0	2	308	361	669
09-Supervising Attorney	133	184	18	42	14	22	1	2	6	6	0	3	172	259	431
11-Staff Attorney	687	1,237	71	248	101	200	3	25	37	107	12	30	911	1,847	2,758
13-Paralegal	120	576	55	312	84	338	0	24	23	35	2	13	284	1,298	1,582
14-Information Technology Staff	56	20	11	5	10	5	1	2	10	0	2	0	90	32	122
15-PAI Coordinator	10	67	0	23	3	13	0	0	0	1	0	0	13	104	117
17-Training Responsible Person	0	3	0	2	0	1	0	0	0	0	0	0	0	6	6
18-Financial Professional	32	110	10	34	9	19	0	6	7	16	1	2	59	187	246
19-Management Professional	29	101	5	61	14	29	1	0	0	8	1	1	50	200	250
21-Law Clerk	18	35	5	13	11	13	0	2	2	2	0	1	36	66	102
23-Senior Aide	1	0	0	1	0	0	0	0	0	0	0	0	1	1	2
25-Administrative Assistant	8	142	3	78	1	104	0	7	2	5	1	1	15	337	352
27-Secretarial/Clerical	14	639	9	353	24	508	0	39	1	38	1	6	49	1,583	1,632
99-Other Position/Job	26	128	14	40	25	63	1	5	6	10	0	3	72	249	321
<b>Total</b>	<b>1,517</b>	<b>3,572</b>	<b>246</b>	<b>1,285</b>	<b>349</b>	<b>1,367</b>	<b>12</b>	<b>118</b>	<b>105</b>	<b>238</b>	<b>20</b>	<b>63</b>	<b>2,249</b>	<b>6,643</b>	<b>8,892</b>

\* Figures include all full-time (90% and above) staff members who were employed for over 6 months in 2008 even if terminated prior to 12/31/08. Figures do not include sub-recipient staffing.

Source: Grant Activity Reports – 2008

## 2008 Summary of LSC Program Staffing Levels by Job Classification, Years of Experience and Average Salary<sup>15</sup>

YEARS OF EXPERIENCE	DIRECTOR		DEPUTY DIRECTOR		DIRECTOR OF LITIGATION		MANAGING ATTORNEY	
	# OF POSITIONS	AVERAGE SALARY	# OF POSITIONS	AVERAGE SALARY	# OF POSITIONS	AVERAGE SALARY	# OF POSITIONS	AVERAGE SALARY
0-1 YEAR	0	0	0	0	0	0	3	46,597
2 YEARS	0	0	0	0	0	0	4	45,975
3 YEARS	0	0	0	0	0	0	3	39,036
4 YEARS	0	0	0	0	0	0	14	46,940
5 YEARS	0	0	0	0	1	51,650	15	56,150
6-7 YEARS	0	0	0	0	1	51,650	24	54,277
8-9 YEARS	1	120,046	0	0	2	57,500	39	60,230
10-14 YEARS	4	86,835	7	66,232	2	67,410	84	64,821
15-19 YEARS	11	102,144	7	88,329	6	81,092	114	70,860
20 OR MORE YEARS	122	108,183	74	100,658	64	91,276	369	75,707
<b>Total Count / Avg. Salary</b>	<b>138</b>	<b>107,168</b>	<b>88</b>	<b>96,939</b>	<b>76</b>	<b>87,912</b>	<b>669</b>	<b>70,330</b>

YEARS OF EXPERIENCE	SUPERVISING ATTORNEY		STAFF ATTORNEY		PARALEGAL		INFORMATION TECHNOLOGY STAFF	
	# OF POSITIONS	AVERAGE SALARY	# OF POSITIONS	AVERAGE SALARY	# OF POSITIONS	AVERAGE SALARY	# OF POSITIONS	AVERAGE SALARY
0-1 YEAR	2	72,500	291	43,661	136	28,056	7	36,161
2 YEARS	6	46,616	314	44,137	83	30,004	4	37,648
3 YEARS	9	54,986	284	44,258	75	31,568	5	46,941
4 YEARS	11	52,540	210	46,413	64	31,445	6	43,739
5 YEARS	15	56,510	148	48,760	40	32,762	4	39,913
6-7 YEARS	30	59,037	237	51,120	102	34,055	17	47,657
8-9 YEARS	22	63,787	181	53,090	95	35,668	8	45,764
10-14 YEARS	68	64,345	319	58,298	200	37,760	26	55,222
15-19 YEARS	77	71,484	255	63,556	191	40,289	14	59,427
20 OR MORE YEARS	191	79,130	511	67,611	590	44,071	31	64,351
<b>Total Count / Avg. Salary</b>	<b>431</b>	<b>70,796</b>	<b>2,750</b>	<b>53,518</b>	<b>1,576</b>	<b>38,139</b>	<b>122</b>	<b>53,274</b>

<sup>15</sup> Years of Experience rounded to the nearest year. Figures include all full-time (90% and above) staff members who were employed for over 6 months in 2008, even if terminated prior to 12/31/08. Figures do not include sub-recipient staffing.

Source: Grant Activity Reports – 2008



**2008 Summary of LSC Program Staffing Levels by Job Classification,  
Years of Experience and Average Salary<sup>15</sup>**

YEARS OF EXPERIENCE	PAI COORDINATOR		TRAINING RESPONSIBLE PERSON		FINANCIAL PROFESSIONAL		MANAGEMENT PROFESSIONAL		LAW CLERK	
	# OF POSITIONS	AVERAGE SALARY	# OF POSITIONS	AVERAGE SALARY	# OF POSITIONS	AVERAGE SALARY	# OF POSITIONS	AVERAGE SALARY	# OF POSITIONS	AVERAGE SALARY
0-1 YEAR	6	33,484	0	0	4	45,447	8	48,933	89	21,752
2 YEARS	0	0	0	0	3	39,176	5	42,774	7	40,821
3 YEARS	7	42,854	0	0	3	42,147	4	41,990	3	36,592
4 YEARS	2	36,023	0	0	4	31,873	7	47,265	0	0
5 YEARS	5	38,621	0	0	3	63,024	10	52,349	0	0
6-7 YEARS	9	48,180	0	0	11	47,878	6	55,805	0	0
8-9 YEARS	7	39,811	2	51,200	5	51,357	13	57,215	0	0
10-14 YEARS	12	49,176	2	33,234	24	56,667	27	60,733	0	0
15-19 YEARS	15	47,521	0	0	37	54,845	31	61,260	2	50,244
20 OR MORE YEARS	54	54,014	2	69,993	152	59,124	139	65,580	0	0
<b>Total Count / Avg. Salary</b>	<b>117</b>	<b>48,701</b>	<b>6</b>	<b>51,476</b>	<b>246</b>	<b>56,511</b>	<b>250</b>	<b>61,443</b>	<b>101</b>	<b>23,696</b>

YEARS OF EXPERIENCE	SENIOR AIDE		ADMINISTRATIVE ASSISTANT		SECRETARIAL/ CLERICAL		OTHER	
	# OF POSITIONS	AVERAGE SALARY	# OF POSITIONS	AVERAGE SALARY	# OF POSITIONS	AVERAGE SALARY	# OF POSITIONS	AVERAGE SALARY
0-1 YEAR	0	0	8	28,916	99	24,545	19	29,260
2 YEARS	0	0	6	32,372	80	24,830	23	28,654
3 YEARS	0	0	6	33,254	68	26,584	27	31,627
4 YEARS	0	0	9	30,752	54	28,099	7	45,163
5 YEARS	0	0	6	28,706	55	27,360	10	34,789
6-7 YEARS	0	0	23	33,579	114	27,344	30	36,989
8-9 YEARS	0	0	26	37,345	108	30,356	23	40,296
10-14 YEARS	2	23,574	31	38,477	227	31,332	64	41,968
15-19 YEARS	0	0	41	42,075	165	33,772	27	40,341
20 OR MORE YEARS	0	0	195	40,826	661	35,385	88	41,096
<b>Total Count / Avg. Salary</b>	<b>2</b>	<b>23,574</b>	<b>351</b>	<b>39,021</b>	<b>1,631</b>	<b>31,708</b>	<b>318</b>	<b>38,242</b>

<sup>15</sup> Years of Experience rounded to the nearest year. Figures include all full-time (90% and above) staff members who were employed for over 6 months in 2008, even if terminated prior to 12/31/08. Figures do not include sub-recipient staffing.

Source: Grant Activity Reports – 2008

## 2007 - 2008 Staffing Levels for LSC Programs

### Numbers of Full-time Staff\*

Position	2007	2008	Percentage Change From 2007
Attorneys <sup>[16]</sup>	3,920	4,144	5.7%
Paralegals	1,526	1,582	3.7%
Other Staff Members	3,082	3,166	2.7%
<b>Total</b>	<b>8,528</b>	<b>8,892</b>	<b>4.3%</b>

\* Figures include all full-time (90% and above) staff members who were employed for over 6 months in 2008 even if terminated prior to 12/31/08. Figures do not include sub-recipient staffing.

### 2008 Full-Time Equivalents (FTE's) - As of 12/31/08

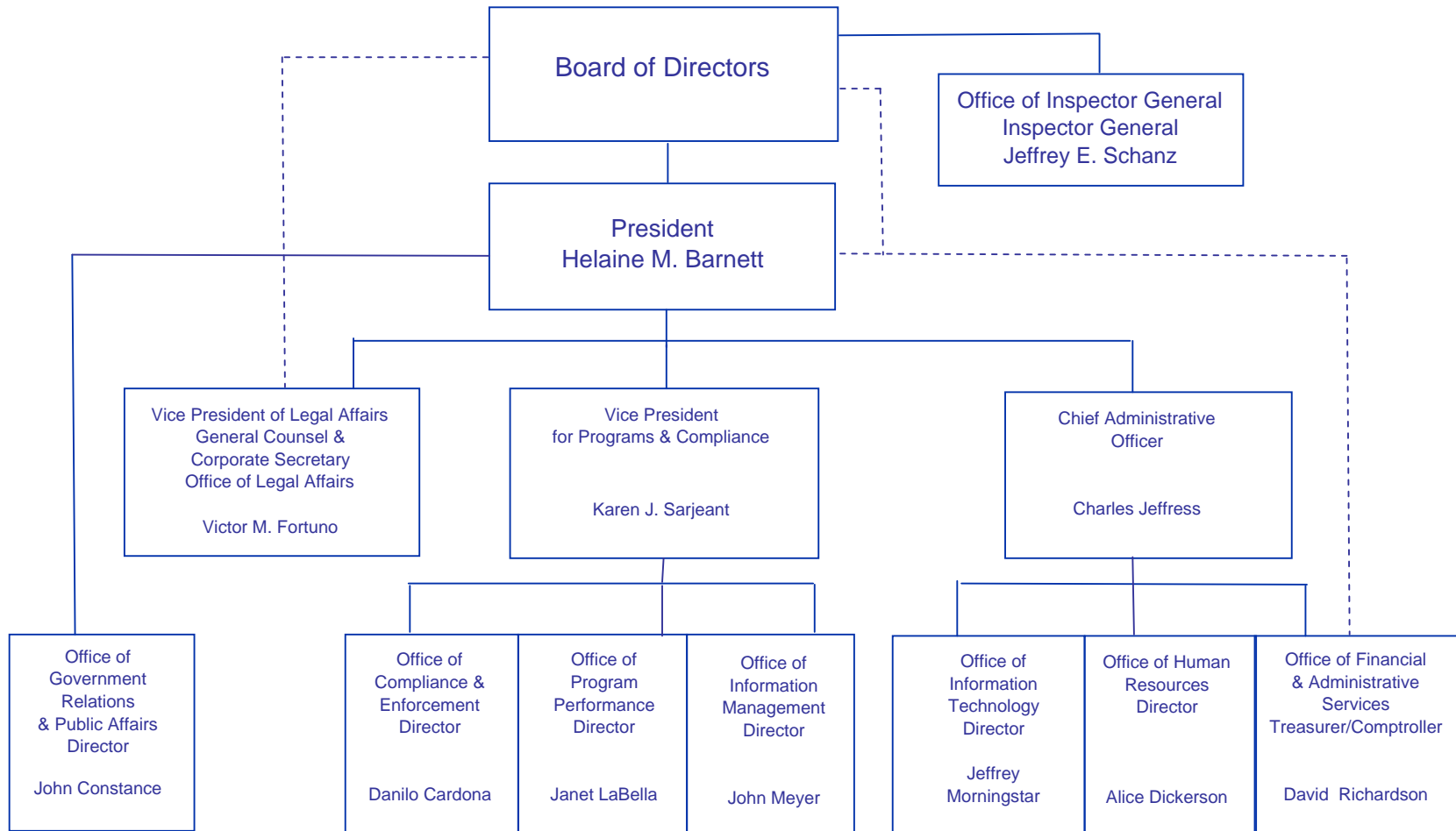
Attorneys	4418
Paralegals	1693
Other	3452
<b>Total</b>	<b>9563</b>

<sup>16</sup> The computation of the number of attorneys includes all Job Codes 5 to 11 (Litigation Director to Staff Attorney) and all Directors and Deputy Directors who are attorneys. It does not include the small number of attorneys serving in non-attorney positions – e.g. Management Professionals who are attorneys.

*Source: Grant Activity Reports – 2008*

# LSC Organizational Chart

(as of July 2009)



# LEGAL SERVICES CORPORATION

## Board of Directors

**Frank B. Strickland**  
Atlanta, Georgia  
Chairman

**Lillian R. BeVier**  
Charlottesville, Virginia  
Vice Chairman

**Jonann C. Chiles**  
Little Rock, Arkansas

**Thomas A. Fuentes**  
Lake Forest, California

**Herbert S. Garten**  
Baltimore, Maryland

**David Hall**  
St. Thomas, Virgin Islands

**Michael D. McKay**  
Seattle, Washington

**Thomas R. Meites**  
Chicago, Illinois

**Laurie Mikva**  
Evanston, Illinois

**Bernice Phillips-Jackson**  
Buffalo, New York

**Sarah M. Singleton**  
Santa Fe, New Mexico

---

**Helaine M. Barnett**  
President