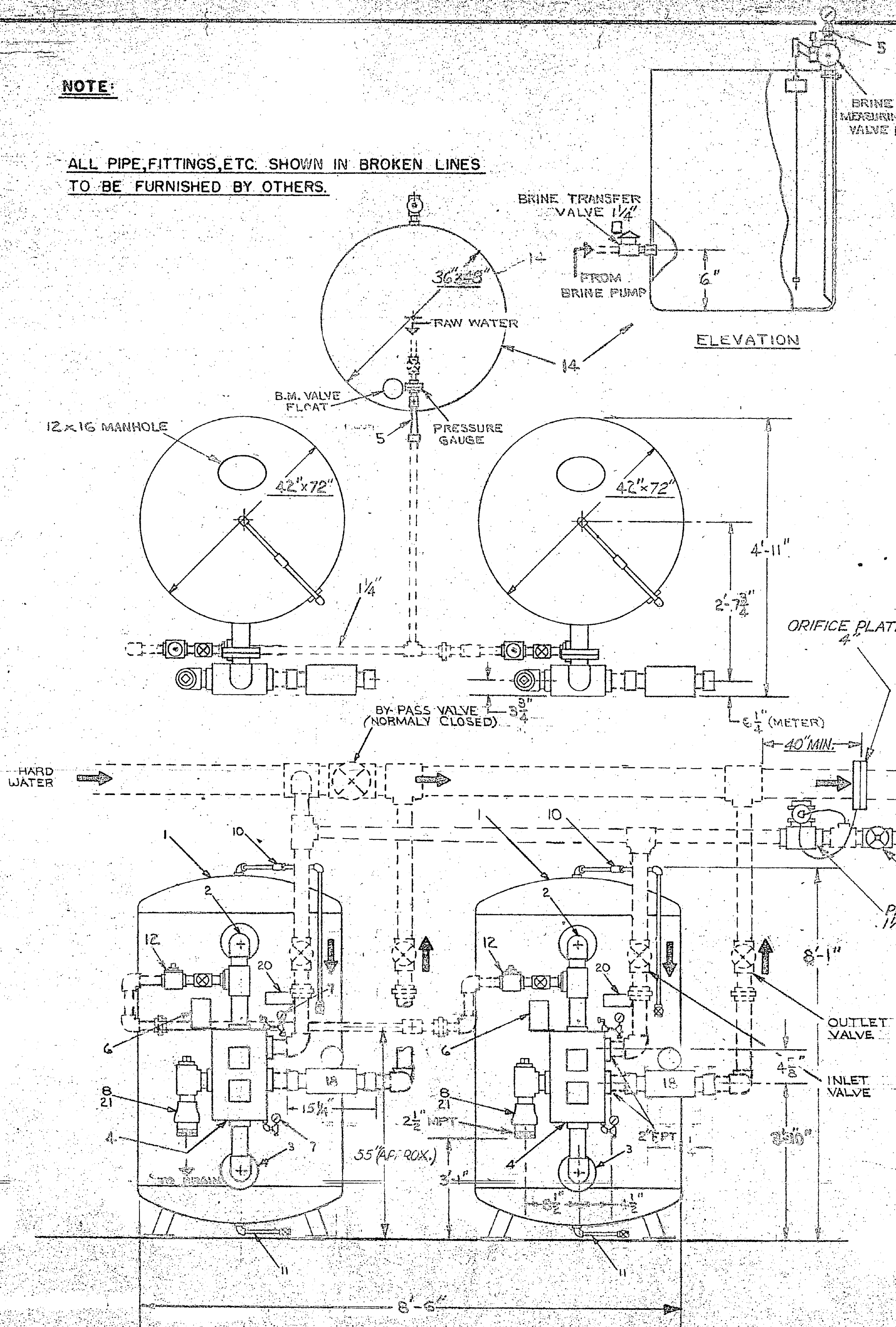


NOTE:

ALL PIPE, FITTINGS, ETC. SHOWN IN BROKEN LINES TO BE FURNISHED BY OTHERS.



| ITEM | PART No. | DESCRIPTION | REQ. | REMARKS |
|------|--------------|---|------|------------------------------|
| 1 | A-02091-76-1 | MINERAL TANK ASSEMBLY 42x72 | 2 | SPECIAL 100" ASME |
| 2 | C-908-42 | UPPER DISTRIBUTOR ASSEMBLY | 2 | |
| 3 | D-165-53 | LOWER HEADER-LATERAL ASSEMBLY | 2 | |
| 4 | B-913-1 | FACE PIPING ASSEMBLY 2-2-0 | 2 | |
| 5 | B-910-4 | INJECTOR ASSEMBLY <small>MODIFY FOR VERTICAL SUCTION AS SHOWN</small> | 1 | PART OF ITEM 14 |
| 6 | B-633-2 | VALVE CONTROL ASSEMBLY | 2 | |
| 7 | A-1145-1 | VALVE ACCESSORIES | 2 | PART OF ITEM 4 |
| 8 | A-1144-2 | BACKWASH CONTROL ASSEMBLY | 2 | 45 GPM |
| 9 | | | | |
| 10 | A-1728-14 | AIR RELIEF PIPING ASSEMBLY | 1 | |
| 11 | A-1730-1 | TANK DRAIN PIPING ASSEMBLY | 1 | PART OF ITEM 1 |
| 12 | B-907-2 | BRINE PIPING ASSEMBLY 1/4" | 2 | |
| 13 | | | | |
| 14 | B-02091-76-1 | BRINE MEASURING TANK ASSEMBLY | 1 | 36x48 FIBERGLASS |
| 15 | | | | |
| 16 | A-1378-28 | GRAVEL - LBS. 700/TANK | 1 | PART OF ITEM 1 |
| 17 | A-1371- | MINERAL - Cu. Ft. 35/TANK | 2 | C-300Z |
| 18 | | WATER METER 2" DISC TYPE AR-LR | 2 | DIAL CAP. 200 M. |
| 19 | | | | |
| 20 | A-802-115 | NAMEPLATE STICKER | 2 | stamp model no. & serial no. |
| 21 | form 3-189 | DRAIN TAG | 2 | check mark drain size |
| 22 | | INSTRUCTIONS MATERIAL | 1 | |
| 23 | A-946-1 | WATER TEST KIT | 1 | |
| 24 | B-546-64 | CYCLE CONTROLLER | 1 | PART OF ITEM 6 |

CALGON JOB NO. E-02091-76
(ORIGINAL NO. F-04760-A)

| REVISIONS | | | | | |
|-----------|------|---------|-----|------|---------|
| NO. | DATE | REMARKS | NO. | DATE | REMARKS |
| 1 | | | 4 | | |
| 2 | | | 5 | | |
| 3 | | | 6 | | |

BRUNER DIVISION OF CALGON CORP.
MILWAUKEE, WISCONSIN SOUTH EL MONTE, CALIFORNIA

AUTOMATIC WATER SOFTENER

DEC. ±
FRAC. ±

DRAWN R.E.A. SCALE

APPROVED

DATE 6-22-76 C-02091-76

