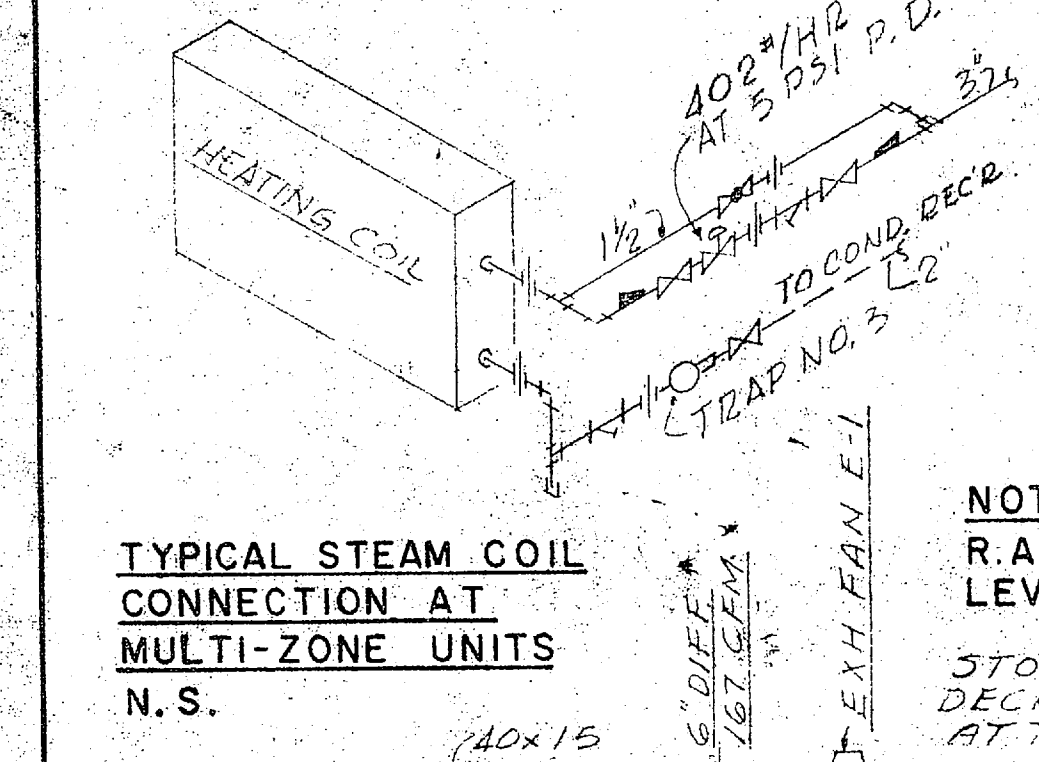
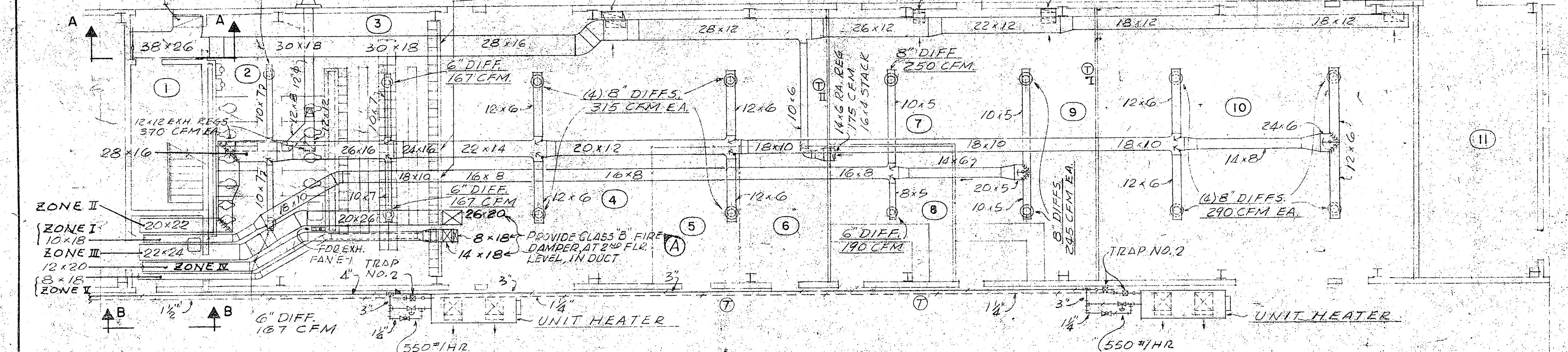


SECOND FLOOR PLAN (MODULES 2&4)  
SCALE 1/8" = 1'-0"



NOTE R.A. REG'S 18" ABOVE FL. LEVEL AT 1ST FL. AREA.  
STOP INSULATION AND DECLASS. DUCT. SIZE AT THIS PORTION



EQUIPMENT

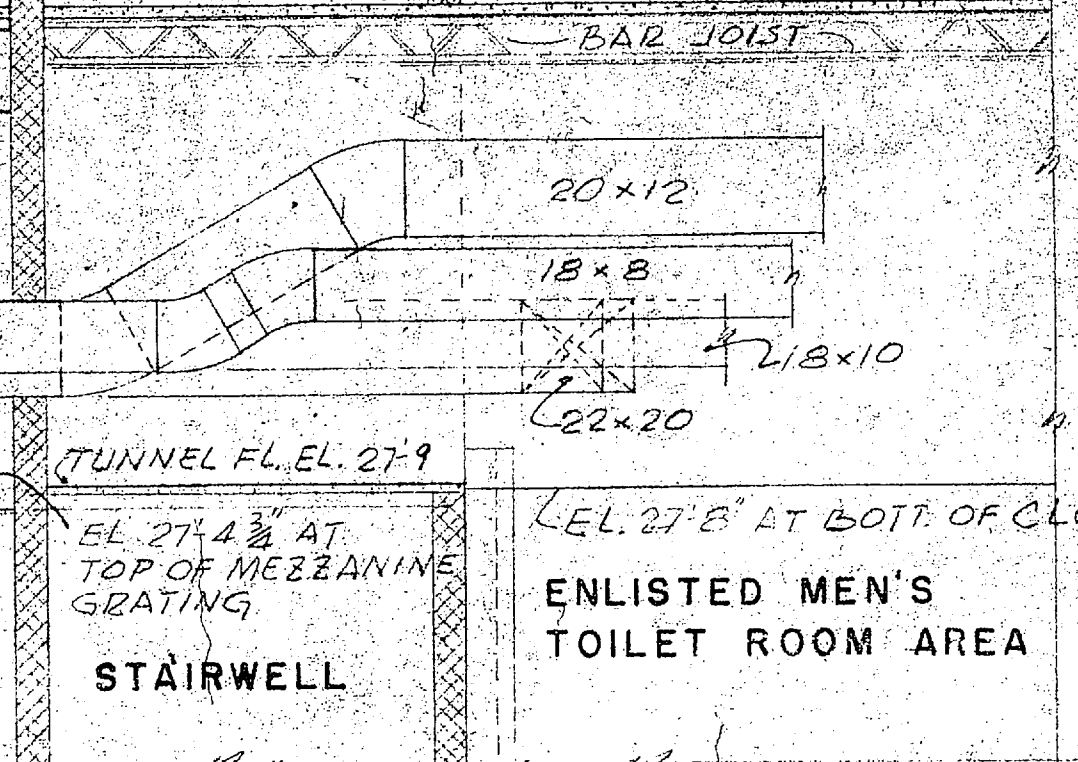
- CONDENSING UNIT**  
CAPACITY 53 TONS AT 40°F SUCTION TEMP AND 105°F CONDENSING TEMP - 1750 RPM - 42.2 KW - 480/60/3.  
CONDENSER 180 GPM ENTERING AT 85°F AND LEAVING AT 95°F - FOULING FACTOR = 0.001 - MAX. PRESSURE DROP = 12 FT.
- COOLING TOWER**  
CAPACITY 53 TONS WITH 180 GPM ENTERING AT 95°F AND LEAVING AT 85°F WITH 79°F W.B. MAX. PRESS. DROP = 12 FT. FAN MOTOR - 3HP - 1750 RPM - 480/60/3.
- CONDENSER WATER PUMP**  
180 GPM AT 45 FT. T.D.H. - 5 HP MIN. - 1750 RPM - 480/60/3.
- MULTI-ZONE UNITS NOS. 1 & 2**  
FAN CAPACITY - 9300 CFM AT 1/8" T.S.P. - 1700 FPM MAX. O.V. - MOTOR 7-1/2 HP MIN. - 480/60/3.  
COOLING COIL - 550 FPM MAX. F.V. - 9300 CFM ENTERING AT 83.2°F DB & 69.2°F WB AND LEAVING AT 60.8°F DB & 59°F WB WITH 40°F SUCTION TEMP. MAX. AIR PRESS. LOSS = 0.5".  
HEATING COIL - 1100 FPM MAX. F.V. - 9300 CFM ENTERING AT 59°F AND LEAVING AT 97°F WITH 5 PSIG STEAM PRESS. MAX. AIR PRESS. LOSS = 0.5".
- UNIT HEATERS**  
FAN CAPACITY - 18000 CFM AT 1" T.S.P. 2200 FPM MAX. O.V. - MOTOR 7-1/2 HP MIN - 480/60/3.

SCHEDULE

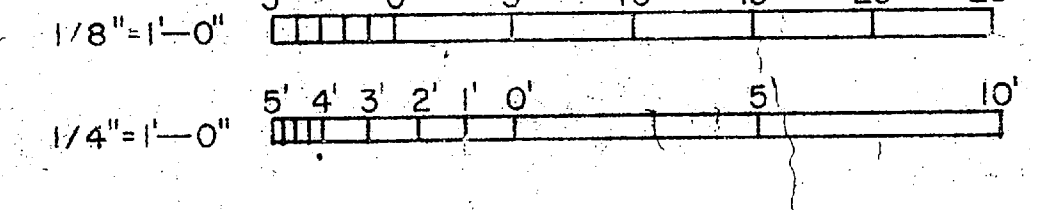
- HEATING COIL - 510,000 BTU/HR WITH 1100 FPM MAX. COIL F.V. - 60°F ENTERING AIR AND 25 PSIG STEAM PRESS. MAX. AIR PRESS. LOSS = 0.3".
- STORAGE WATER HEATER**  
SIZE 36" DIA. X 84" LONG - NOMINAL STORAGE CAPACITY - 365 GALS. - HEATING CAPACITY - 230 GPH FROM 40°F TO 140°F WITH 40 PSIG STEAM PRESS.
- DUPLEX CONDENSATE PUMP AND RECEIVER**  
15,000 SQ. FT. EDR - 22-1/2 GPM AT 40 PSIG DISCHARGE PRESS. - MOTORS 1-1/2 HP 3450 RPM - 480/60/3. RECEIVER CAPACITY 115 GALS.
- EXHAUST FANS**  
E-1 - 740 CFM AT 1/8" S.P. - 860 RPM - 2755 MAX. T.S. - 1/12 HP - 120/60/1.  
E-2 - 700 CFM AT 1/8" S.P. - 860 RPM - 2755 MAX. T.S. - 1/12 HP - 120/60/1.  
E-3 - 1820 CFM AT 1/4" S.P. - 1725/1140 RPM 3110 MAX. T.S. - 1/3 HP - 120/60/1.  
E-4 - 1500 CFM AT 1/4" S.P. - 2 SPEED - 1725 HI 1140 LO. MAX. TIP SPD 5530/3655 1/2 HP. 120/60/11/12 EXPLOSION PROOF MOTOR CLASS I DIV. I

PITCH STEAM AND RETURN LINES 1" IN 40 FT.

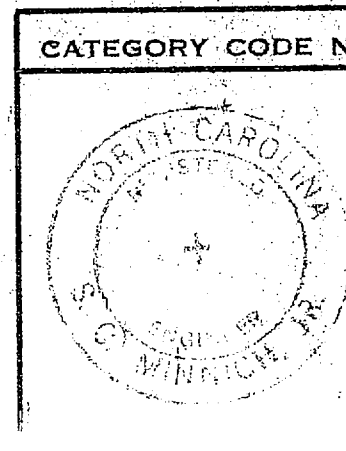
SECTION B-B SCALE 1/4" = 1'-0"



GRAPHIC SCALES



FIRST FLOOR PLAN (MODULES 2 & 4)  
SCALE 1/8" = 1'-0"



CATEGORY CODE NO. 0211.10  
SATISFACTORY TO  
*E.P. Brown*  
DATE 9 FEB 1962  
SUBMITTED BY SIX ASSOCIATES INC.  
*W.A. Brown*  
DEC. 1, 1961

REVISIONS		DATE	APPROVAL
(A)	CLASS "B" FIRE DAMPERS ADDED IN DUCTS.	9/1/62	<i>E.P.</i>
	EXH. FAN ADDED IN BATTERY ROOM.		

D.P.W.O. DRAWING NO. 60018	DEPARTMENT OF THE NAVY DISTRICT PUBLIC WORKS OFFICE	BUREAU OF YARDS & DOCKS 8TH RD. NORFOLK, VA.
DR. <i>E.P. Brown</i>	INCORPORATED ARCHITECTS & ENGINEERS	M.C.A.F. NEW RIVER, N.C.
PROJ. MGR. <i>W.A. Brown</i>	D.P.W.O. <i>W.A. Brown</i>	APPROVED <i>W.A. Brown</i>
CHK. <i>W.A. Brown</i>	BR. MGR. <i>W.A. Brown</i>	DIR. DES. <i>W.A. Brown</i>
AIRCRAFT MAINTENANCE HANGAR MECHANICAL PLANS (MODULES 2 & 4)		SCALE AS NOTED SPEC 40134/81
SHEET 32 OF 39 N.B. 40134		Y. & D. DRAWING NO. 883018

