

TO WHITE CEMETERY AT N.C. HWY. No. 24

TO TENT CAMPS

See Primary Sheet No. 26

TO POWER PLANT

1-75 KVA 4/A Well # M244

See Primary Sheet No. 26

See Primary Sheet No. 26

Well # M243 3-3 KVA 4/A

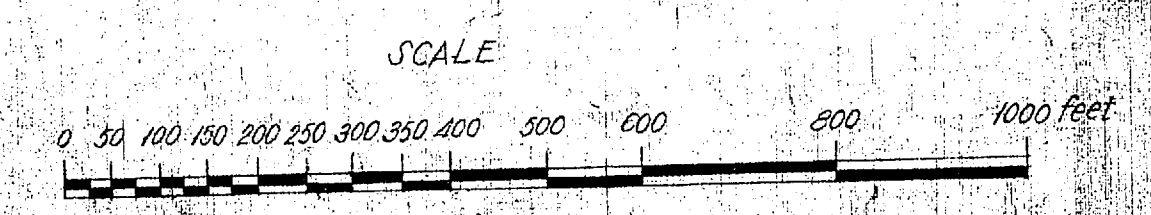
MONTFORD POINT CAMP No. 3

MONTFORD POINT CAMP No. 1

MONTFORD POINT CAMP No. 2

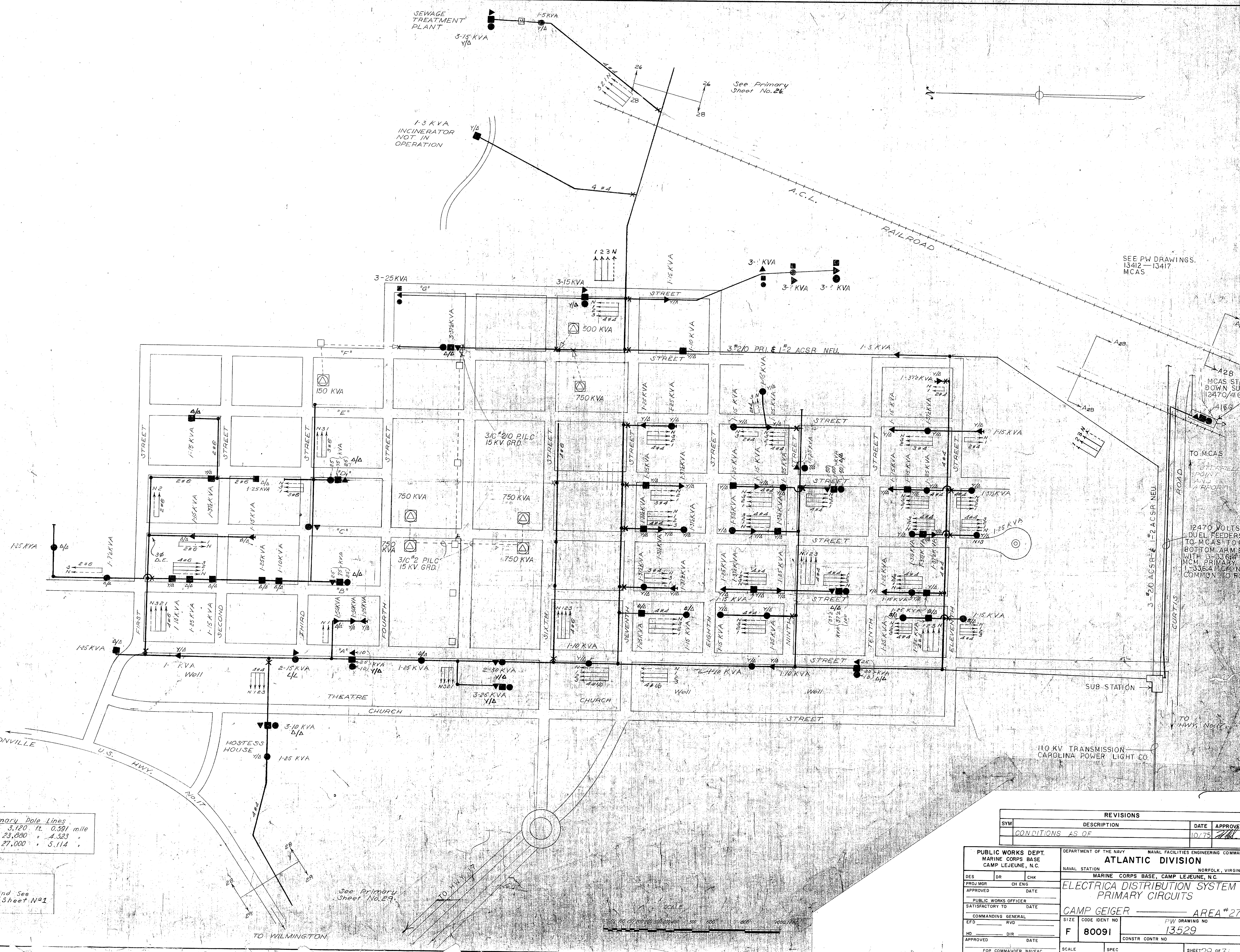
Note: For Legend See Primary Sheet No. 1

Length of Primary Pole Lines
 Single Phase: 450 ft. 0.085 mile
 Three Phase: 24,160 ft. 4.636 mile
 Total: 24,930 ft. 4.721 mile



REVISIONS		DATE	APPROVED
SYM	DESCRIPTION	10/75	[Signature]
CONDITIONS AS OF			

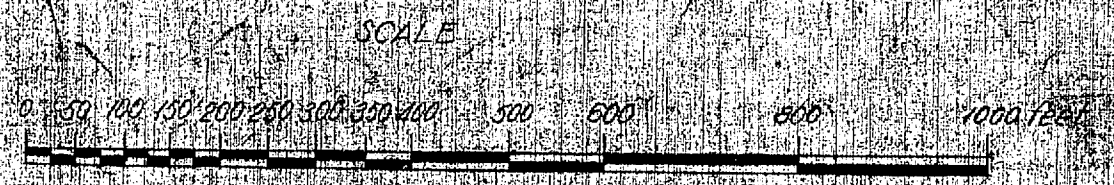
PUBLIC WORKS DEPT. MARINE CORPS BASE CAMP LEJEUNE, N.C.		DEPARTMENT OF THE NAVY NAVAL FACILITIES ENGINEERING COMMAND ATLANTIC DIVISION NORFOLK, VIRGINIA	
MARINE CORPS BASE, CAMP LEJEUNE, N.C.		MARINE CORPS BASE, CAMP LEJEUNE, N.C.	
ELECTRICAL DISTRIBUTION SYSTEM PRIMARY CIRCUITS		MONTFORD POINT AREA #26	
DES	DR	CHK	
PROJ MGR	CH	ENG	
APPROVED	DATE		
PUBLIC WORKS OFFICER		PW DRAWING NO.	
SATISFACTORY TO	DATE	13528	
COMMANDING GENERAL		SIZE	CODE IDENT NO.
EFD	RVD	F	80091
APPROVED	DIR	DATE	CONSTR CONTR NO.
FOR COMMANDER, NAVFAC			
SCALE	SPEC	SHEET 27 OF 31	
		DWG NO.	



Length of Primary Pole Lines
 Single Phase : 3,120 ft. 0.591 mile
 Three Phase : 23,680 ft. 4.523 miles
 Total : 27,000 ft. 5.114 miles

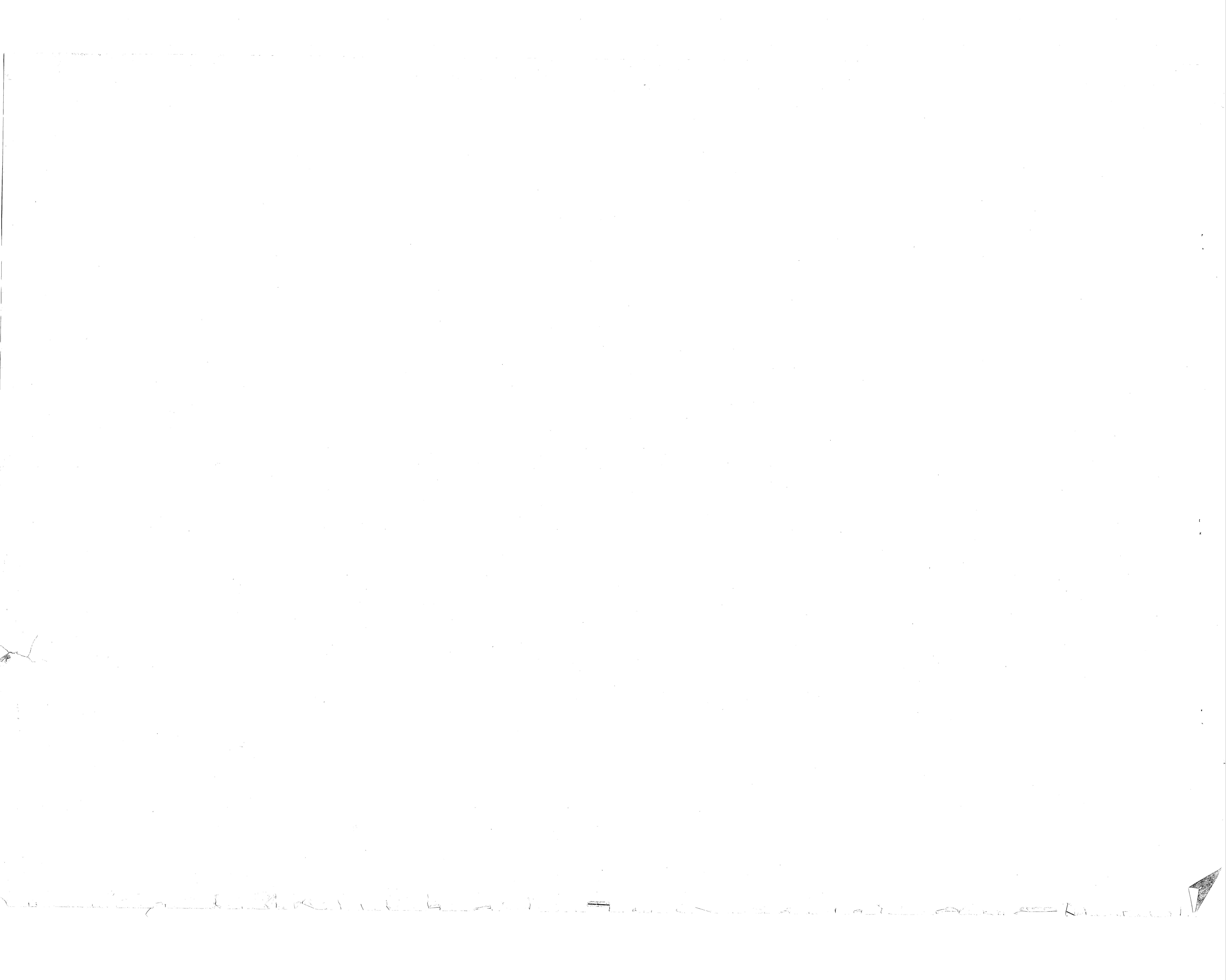
Note:
 For Legend See
 Primary Sheet No. 2

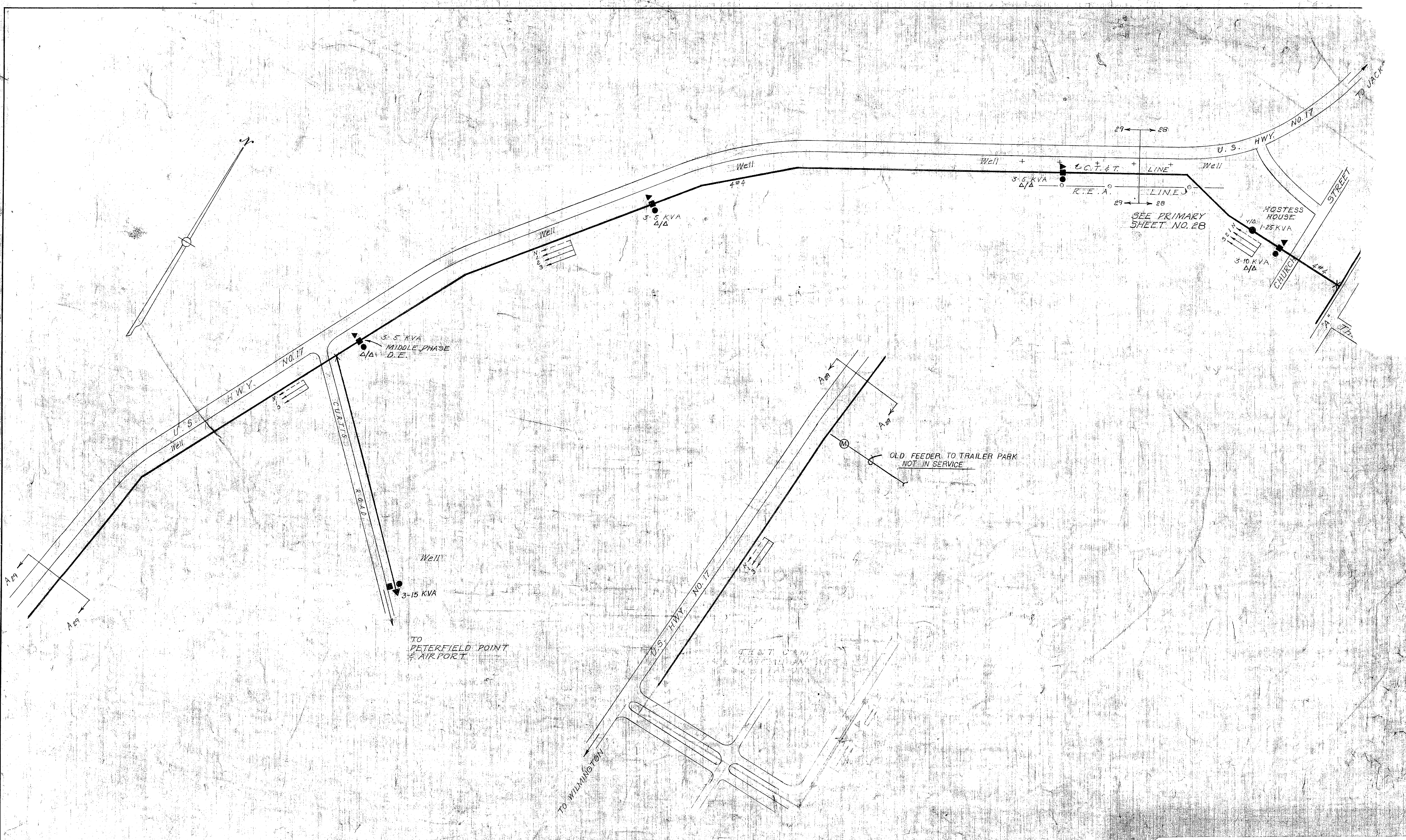
See Primary
 Sheet No. 29



REVISIONS		
SYM	DESCRIPTION	DATE APPROVED
CONDITIONS	AS OF	10/75

PUBLIC WORKS DEPT. MARINE CORPS BASE CAMP LEJUNE, N.C.		DEPARTMENT OF THE NAVY NAVAL FACILITIES ENGINEERING COMMAND ATLANTIC DIVISION NORFOLK, VIRGINIA	
DES. DR. CHK.		MARINE CORPS BASE, CAMP LEJUNE, N.C.	
PROJ. MGR. CH. ENG.		ELECTRICAL DISTRIBUTION SYSTEM PRIMARY CIRCUITS	
APPROVED DATE		CAMP GEIGER AREA #27	
PUBLIC WORKS OFFICER		PW DRAWING NO.	
SATISFACTORY TO DATE		13529	
COMMANDING GENERAL		CONSTR. CONTR. NO.	
EPD	RVD	SIZE	CODE IDENT NO.
HD	DIR	F 80091	
APPROVED DATE	SCALE	SPEC	SHEET 28 OF 31
FOR COMMANDER, NAVFAC			LAND DIV DWG NO.



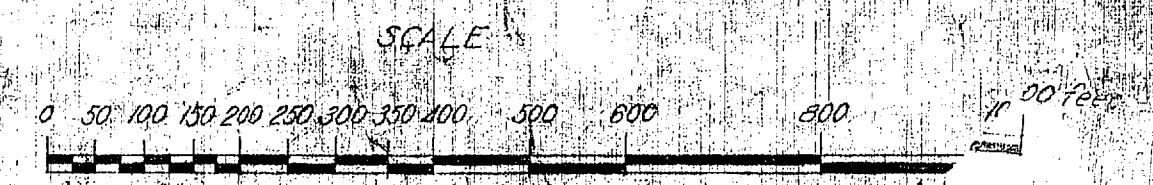


Note:
For Legend See
Primary Sheet No. 1

Length of Primary Feeder Lines
Single Phase : 140 ft. 0.020 mile
Three Phase : 10,240 ft. 1.939 mile
Total : 10,380 ft. 1.965 mile

REVISIONS			
SYM.	DESCRIPTION	DATE	APPROVED
	CONDITIONS AS OF	10/75	

PUBLIC WORKS DEPT. MARINE CORPS BASE CAMP LEJEUNE, N.C.		DEPARTMENT OF THE NAVY NAVAL FACILITIES ENGINEERING COMMAND ATLANTIC DIVISION NORFOLK, VIRGINIA	
DES. DR. <i>M</i>	CHK.	MARINE CORPS BASE, CAMP LEJEUNE, N.C.	
PROJ. MGR.	CH. ENG.	ELECTRICAL DISTRIBUTION SYSTEM PRIMARY CIRCUITS AREA #28	
APPROVED	DATE	SIZE	CODE IDENT NO.
		F	80091
PUBLIC WORKS OFFICER	DATE	DRAWING NO.	CONSTR. CONTR. NO.
		1-530	
COMMANDING GENERAL	DATE		
EFD	RVD		
HD	DIR		
APPROVED	DATE		



PRIMA R

COMPTE RENDU
WYBNIENIE
DEPARTEMENTU
WYBNIKOW
WYBNIKOW

