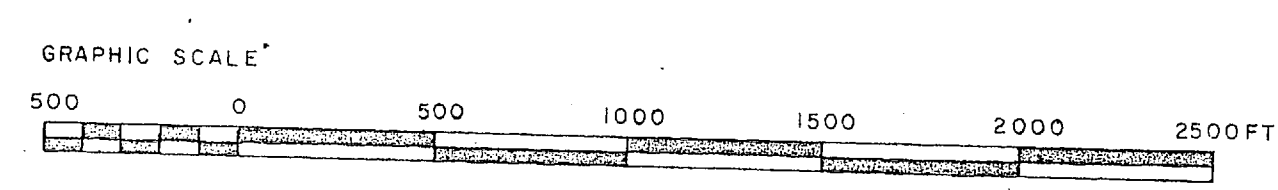


LEGEND

BUILDINGS & STRUCTURES	
ROADS, WALKS, PARKING AREAS, PAVED AREAS & AIRFIELD PAVEMENTS	
RAILROADS	
NAVY PROPERTY BOUNDARY	
R.R. RIGHT-OF-WAY LINE	
TRANSMISSION LINE	
SHORELINE	
RIVER FLOW	
DEPTH IN FEET	

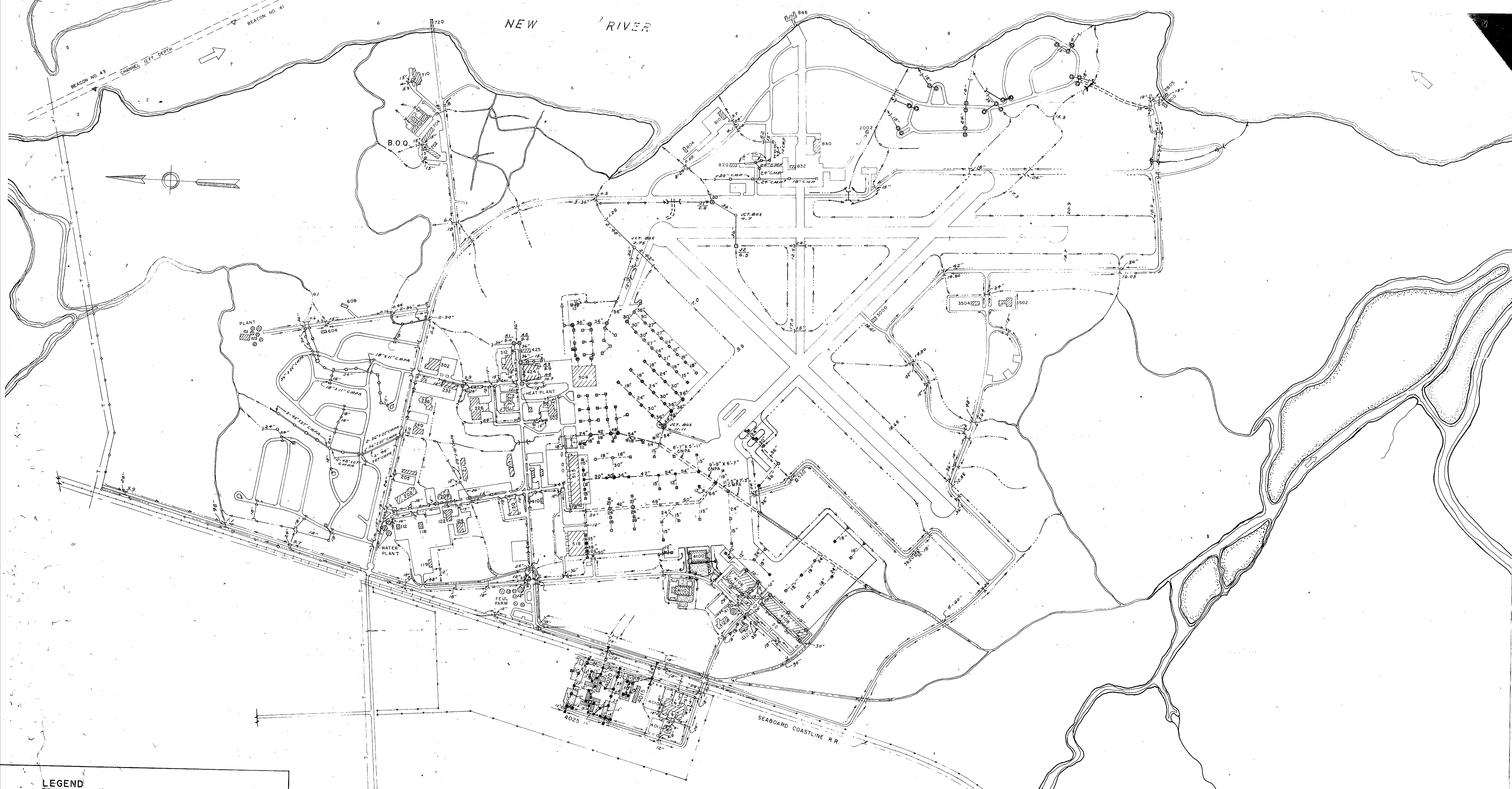
LEGEND	EXISTING	NEW
STORM SEWER LINES		
MANHOLES (STORM)		
CATCH BASIN		



P. W. DRAWING NO.	13377	MARINE CORPS BASE
DESIGNED BY	E.G.U.	CAMP LEJEUNE, NORTH CAROLINA
DRAWN BY	E.G.U.	
CHECKED BY	J.R. G.	
APPROVED BY		
APPROVED		SCALE
SUBMITTED		SHEET
PUBLIC WORKS OFFICER		COMMANDING GENERAL
		NO.

MCAS DRAINAGE





LEGEND

- BUILDINGS & STRUCTURES
- ROADS, WALKS, PARKING AREAS, PAVED AREAS & AIRFIELD PAVEMENTS
- RAILROADS
- NAVY PROPERTY BOUNDARY
- R.R. RIGHT-OF-WAY LINE
- TRANSMISSION LINE
- SHORELINE
- RIVER FLOW
- DEPTH IN FEET

LEGEND

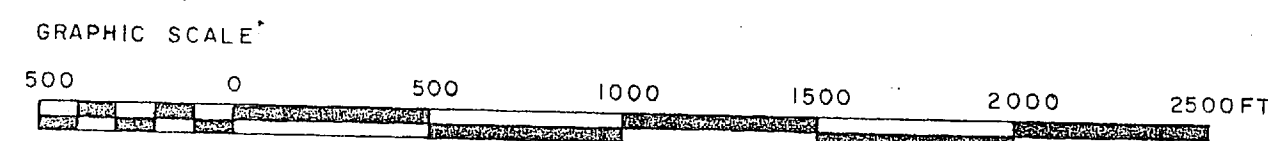
- STORM SEWER LINES
- MANHOLES (STORM)
- CATCH BASIN

EXISTING

-
-
-

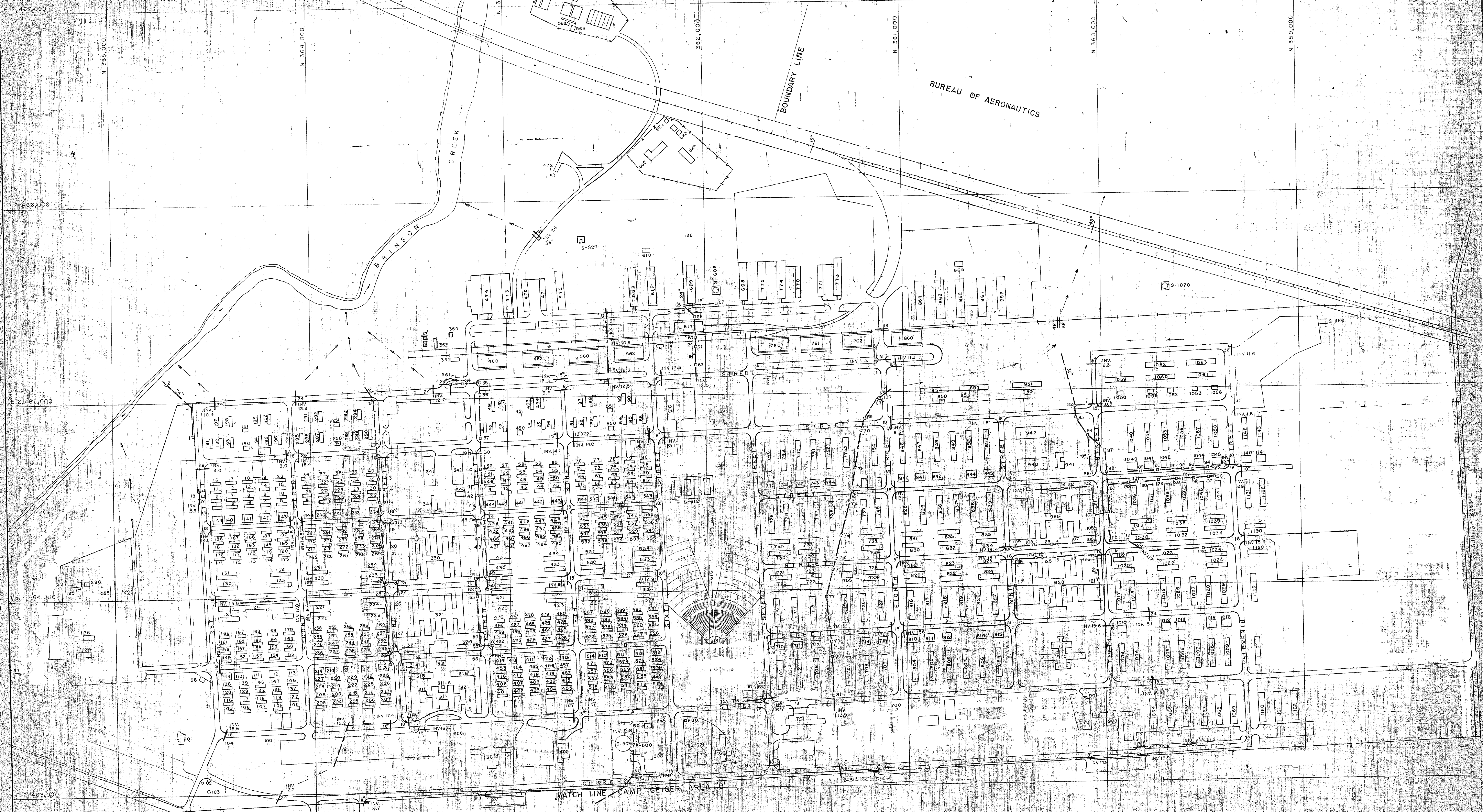
NEW

-
-
-



P. W. DRAWING NO. 13377		MARINE CORPS BASE CAMP LEJEUNE, NORTH CAROLINA	
DESIGNED BY E. G. J. JR.	CHECKED BY	DATE	SCALE
MCAS DRAINAGE		APPROVED	SUBMITTED
PUBLIC WORKS OFFICER		QUARTERMASTER GENERAL	



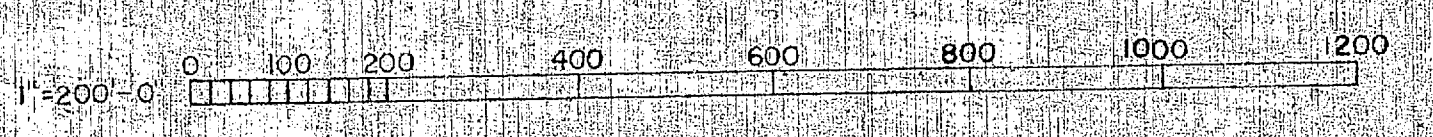


LEGEND

- EXISTING STRUCTURE
- PROPOSED OR FUTURE STRUCTURE
- SYMBOLS**
- EXISTING STORM SEWER
- PROPOSED OR FUTURE STORM SEWER *
- EXISTING INLET AND NUMBER
- PROPOSED OR FUTURE INLET AND NUMBER *
- DIRECTION OF DRAINAGE DITCH FLOW
- EXISTING JUNCTION BOX OR MANHOLE - NO GRATE OR INLET
- *NOTE FUTURE UTILITY DESIGNATED THUS (F)

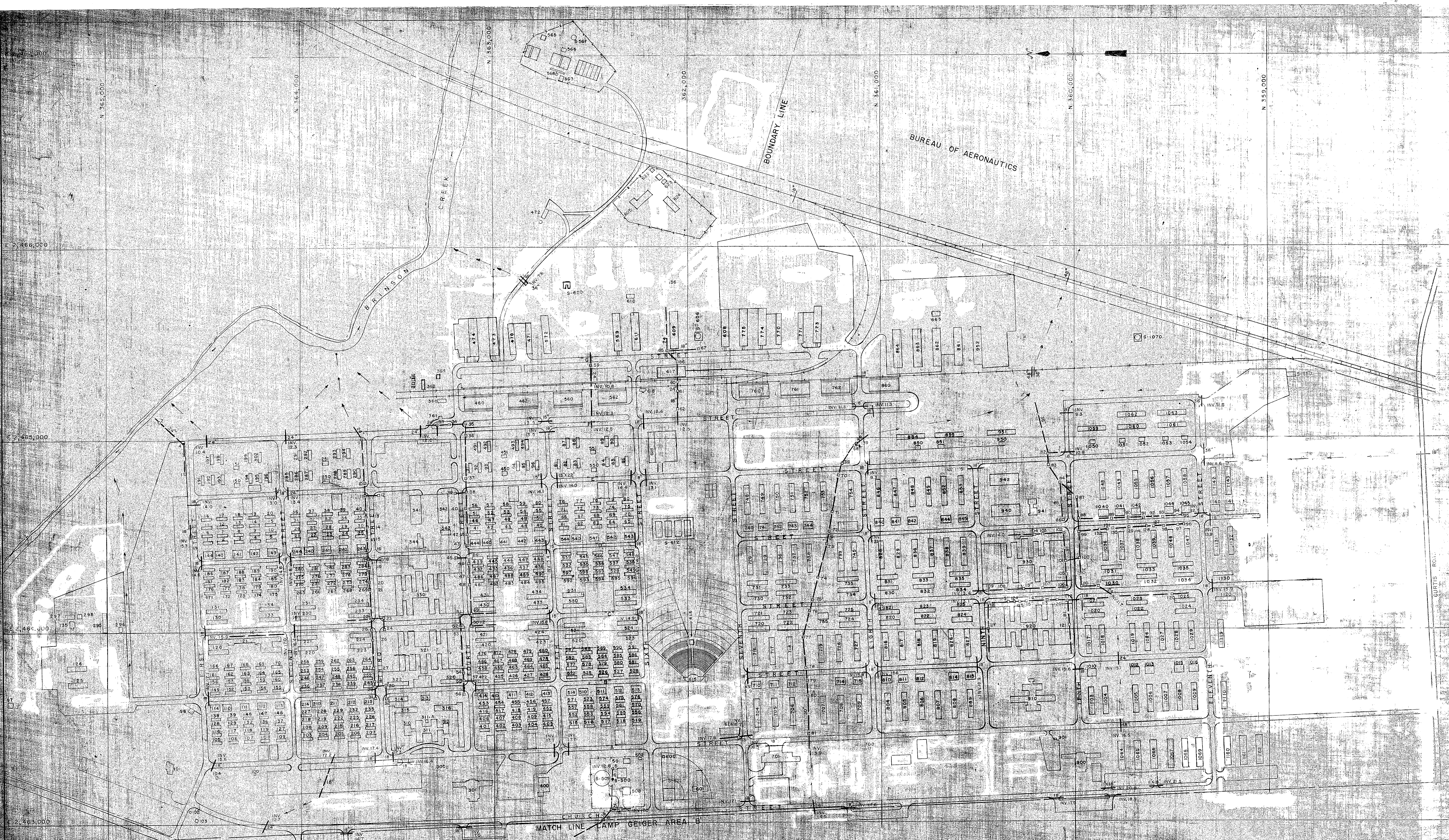
ELEVATIONS REFER TO MEAN SEA LEVEL

GRAPHIC SCALE



APPROVED FOR SHORE STATION DEVELOPMENT BOARD	DATE
APPROVED FOR BUREAU OF YARDS AND DOCKS	DATE
APPROVED FOR SPONSOR BUREAU OR OFFICE	DATE
APPROVED FOR LOCAL DEVELOPMENT BOARD	DATE

REVISION	DATE	APPD	DESCRIPTION
P.W. DRAWING NO. 10142			
DEPARTMENT OF THE NAVY BUREAU OF YARDS & DOCK MARINE BARRACKS, CAMP LEJEUNE, N. C.			
MASTER SHORE STATION DEVELOPMENT PLAN			
PART IV - SECTION 6			
AREA DEVELOPMENT PLAN			
CAMP GEIGER AREA "A"			
UTILITIES			
STORM DRAINAGE SYSTEM			
IN CHARGE	DATE	SUBMITTED	DATE
APPROVED	DATE	STATION DEVELOPMENT BOARD	SCALE GRAPHIC SHEET 219 OF 240
COMMANDING GENERAL		Y&D NO. 64524	



BUREAU OF AERONAUTICS

BOUNDARY LINE

BRINSON CREEK

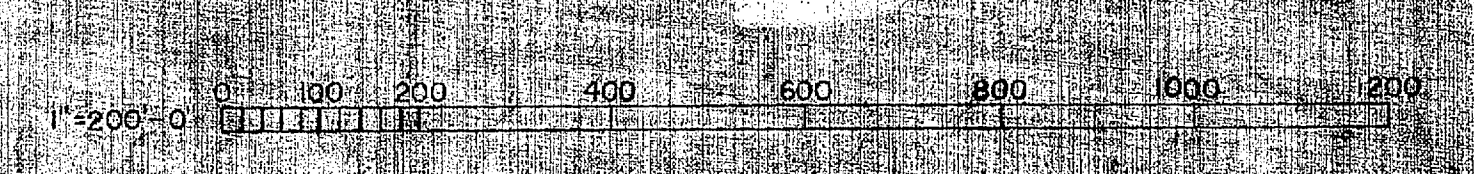
LEGEND

- EXISTING STRUCTURE
- PROPOSED OR FUTURE STRUCTURE
- SYMBOLS**
- EXISTING STORM SEWER
- PROPOSED OR FUTURE STORM SEWER
- EXISTING INLET AND NUMBER
- PROPOSED OR FUTURE INLET AND NUMBER
- DIRECTION OF DRAINAGE DITCH FLOW
- EXISTING JUNCTION BOX OR MANHOLE - NO GRATE OR INLET

*NOTE: FUTURE UTILITY DESIGNATED THUS (F)

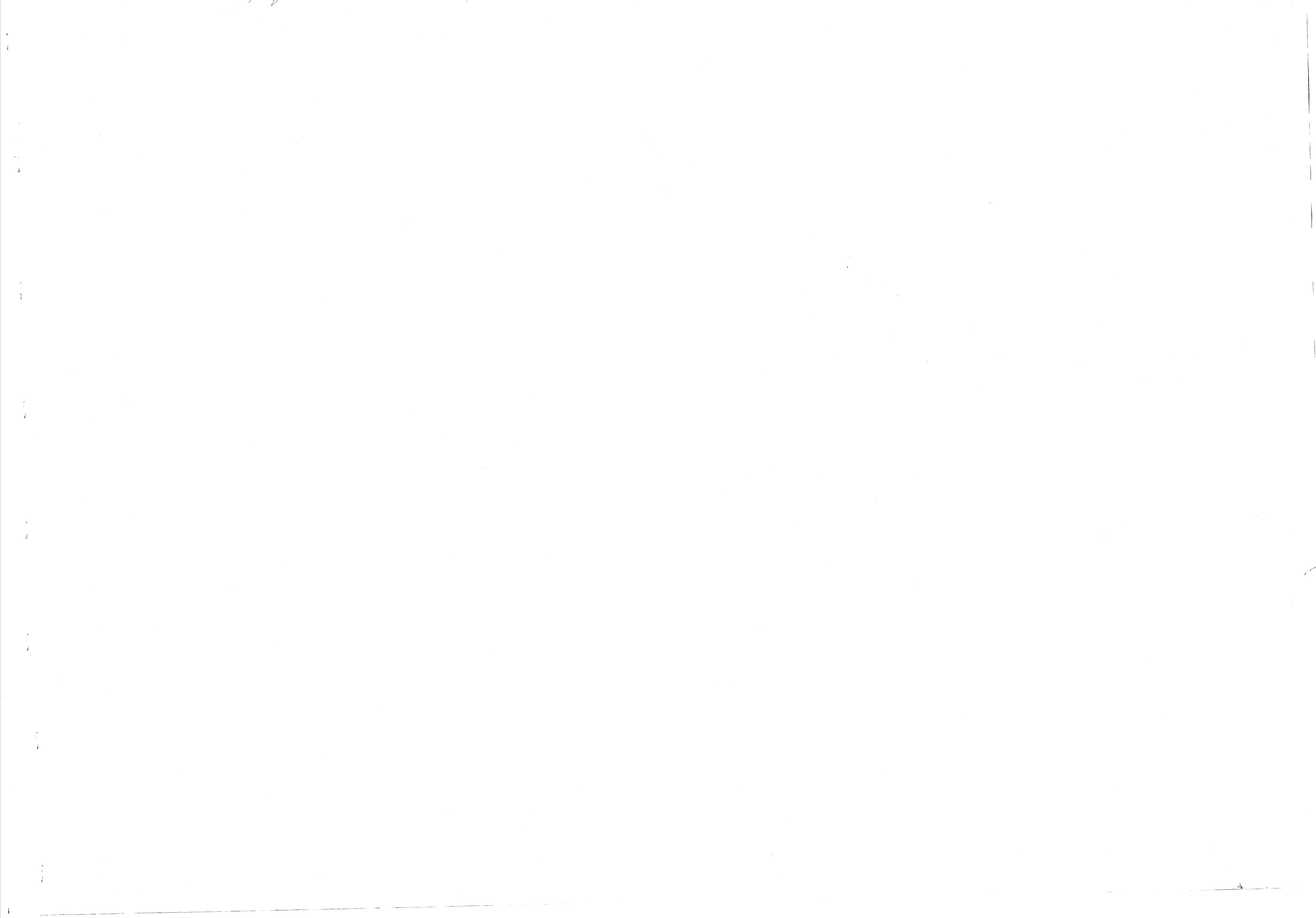
ELEVATIONS REFER TO MEAN SEA LEVEL

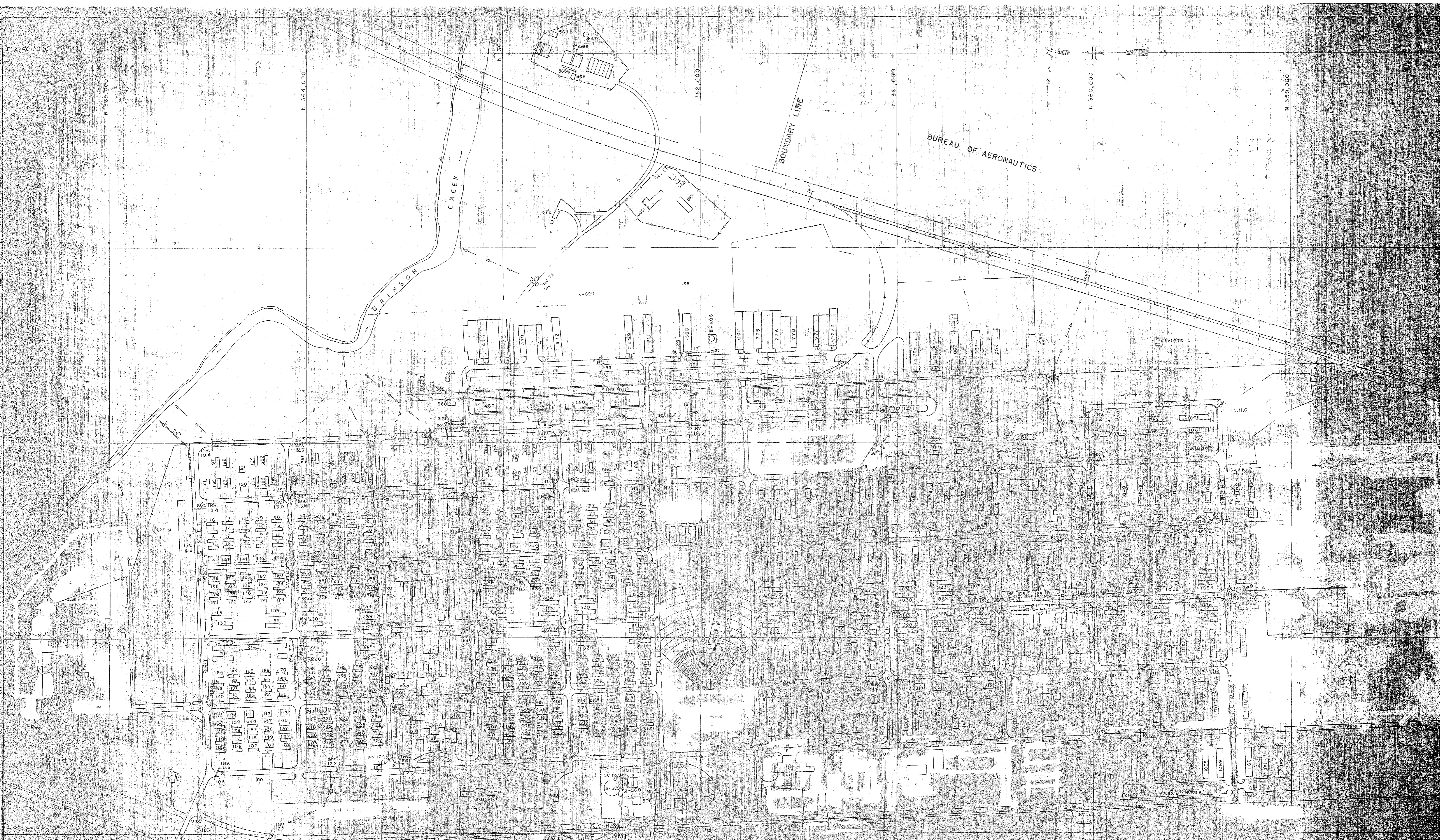
GRAPHIC SCALE



APPROVED FOR SHORE STATION DEVELOPMENT BOARD
 APPROVED FOR BUREAU OF YARDS AND DOCKS
 APPROVED FOR SPONSOR BUREAU OR OFFICE
 APPROVED FOR LOCAL DEVELOPMENT BOARD

REVISION	DATE	APPROVED	DESCRIPTION	BY
DESIGN			DEPARTMENT OF THE NAVY BUREAU OF YARDS & DOCKS MARINE BARRACKS, CAMP LEJEUNE, N.C.	
DRWN			MASTER SHORE STATION DEVELOPMENT PLAN PART IV - SECTION 6 AREA DEVELOPMENT PLAN CAMP GEIGER AREA "A" UTILITIES STORM DRAINAGE SYSTEM	
CHKD				
SUPVISED				
IN CHARGE				
APPROVED	DATE	SUBMITTED	DATE	SCALE GRAPHIC
COMMANDING GENERAL		STATION DEVELOPMENT BOARD		SHEET 219 OF 242 Y.B. NO. 648242

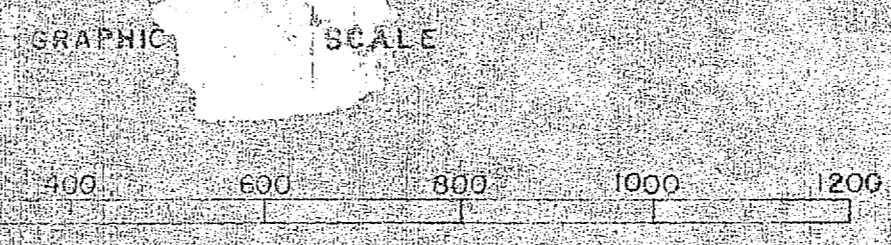




LEGEND

- EXISTING STRUCTURE
- PROPOSED OR FUTURE STRUCTURE
- SYMBOLS**
- EXISTING STORM SEWER
- PROPOSED OR FUTURE STORM SEWER
- EXISTING INLET AND NUMBER
- PROPOSED OR FUTURE INLET AND NUMBER
- DIRECTION OF DRAINAGE DITCH FLOW
- EXISTING JUNCTION BOX OR MANHOLE - NO GRATE OR INLET
- FUTURE UTILITY DESIGNATED THUS (X)

ELEVATIONS REFER TO MEAN SEA LEVEL



APPROVED FOR SHORE STATION DEVELOPMENT BOARD	APPROVED FOR BUREAU OF SEEDS AND DOGS	APPROVED FOR SPONSOR BUREAU OR OFFICE	APPROVED FOR LOCAL DEVELOPMENT BOARD
DATE	DATE	DATE	DATE

REVISION DATE	DESCRIPTION
10142	REPARTMENT OF THE NAVY BUREAU OF MARINE BARRACKS, CAMP GEIGER AREA DEVELOPMENT PLAN
DESIGNED BY	MASTER SHORE STATION DEVELOPMENT PLAN
TRACED BY	PART IV - SECTION
CHECKED BY	AREA DEVELOPMENT PLAN
SUPVISED BY	CAMP GEIGER AREA UTILITIES
IN CHARGE	STORM DRAINAGE
APPROVED	SUBMITTED
DATE	DATE
COMMANDING GENERAL	STATION AT

RETRIEVED

