

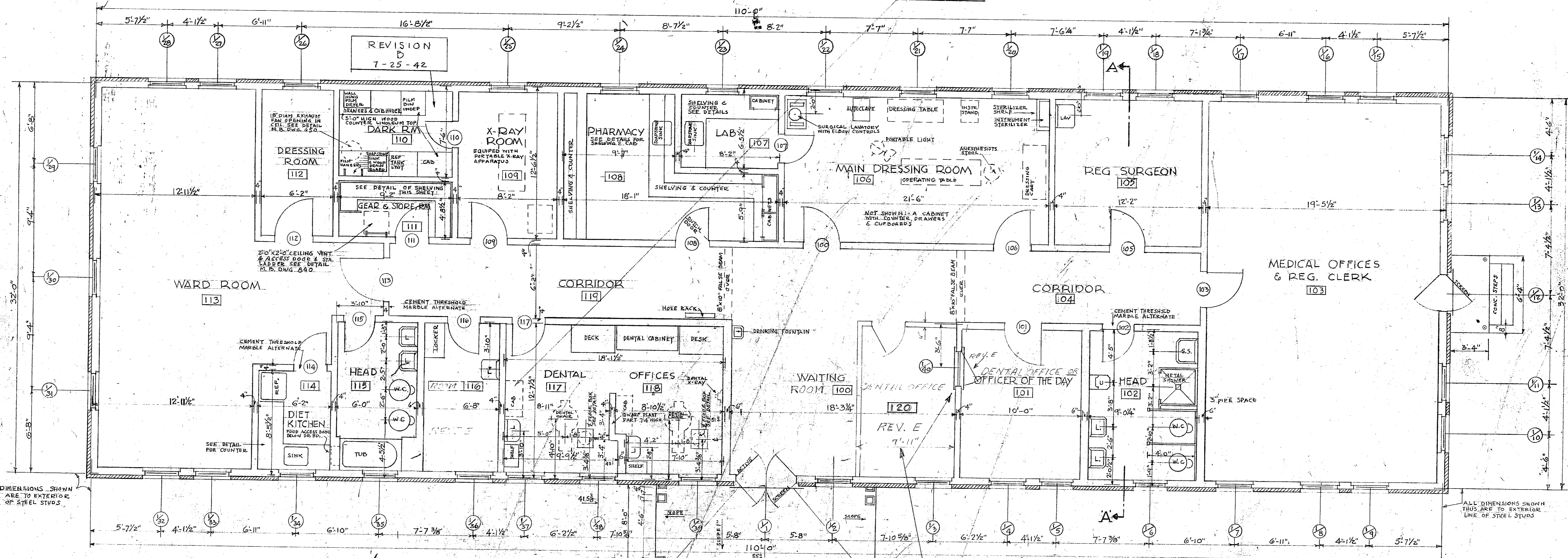
PROVIDE CONNECTIONS LISTED BELOW

CHECK SIZE & LOCATION OF CONNECTION WITH THE MANUFACTURER. SPECIFIED PROVIDE CONNECTIONS FOR ADDITIONAL FIXTURES NOT LISTED BUT SHOWN ON PLAN OR SPECIFIED.

LOCATION	EQUIPMENT	PLUMBING	ELECTRIC	REMARKS
DARK ROOM	WALL HUNG FILM DRYER	H & C WATER & WASTE	YES	
	SOAP STONE SINK	H & C WATER & WASTE	YES	
	REF. TANK UNIT	H & C WATER & WASTE	YES	
	2 SAFE LIGHT LOWER TANK	H & C WATER & WASTE	YES	
	CEILING DARK ROOM LIGHT		YES	
X-RAY ROOM	PORTABLE X-RAY UNIT		YES	
PHARMACY LABORATORY	SOAP STONE SINK	H & C WATER & WASTE		GAS FOR BURNER
	do	do		do
MAIN DRESSING ROOM	SURGICAL LAVATORY	H & C WATER & WASTE	YES	CHECK FOR WATER & WASTE
	AUTOClave		YES	
	INSTRUMENT STERILIZER		YES	
	PORTABLE LIGHT		YES	
	GENERAL ILLUMINATION		YES	
	FAN OUTLETS		YES	
REG SURGEON	LAVATORY	H & C WATER & WASTE		
VENT. HEAD	STANDARD STANDS (2)	C. WATER & WASTE		
	LAVATORY	H & C WATER		
DENTAL OFFICE	LAVATORIES (2)	H & C WATER	YES	GAS FOR BURNER
	DENTAL CABINET		YES	
	DENTAL X-RAY		YES	PROPANE GAS CONNECTION
	OPERATING UNIT CABINET	C. WATER & WASTE	CHECK	CHECK FOR GAS

REVISION
A
7-9-42

REVISION
D
7-25-42



ALL DIMENSIONS SHOWN THUS ARE TO EXTERIOR LINE OF STEEL STUDS.

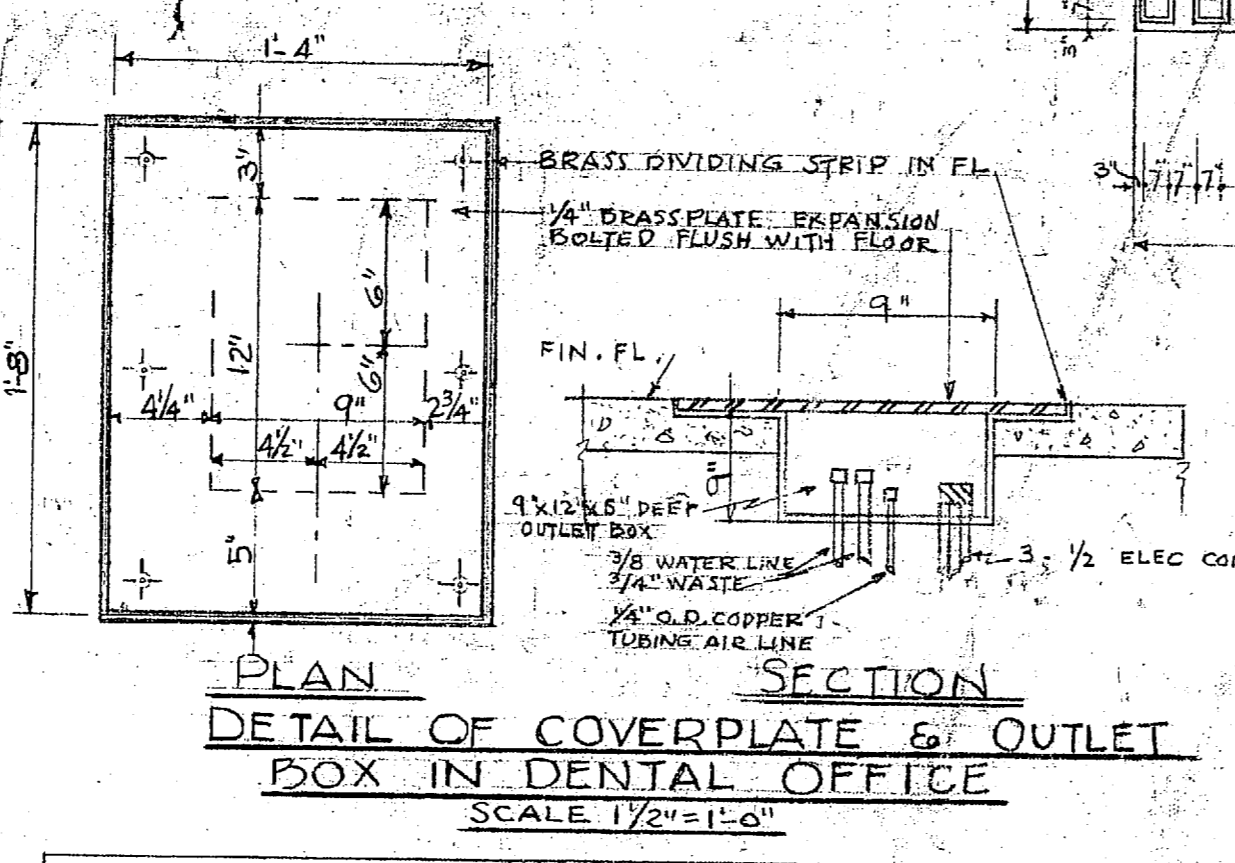
ALL DIMENSIONS SHOWN THUS ARE TO EXTERIOR LINE OF STEEL STUDS.

FOR SECTION A-A
SEE M.D. DWG. 840.

REVISION C
Sept. 21, 1942

ROOM NO.	ROOM FINISHES
100, 101, 103, 104, 105, 106, 108, 109, 110, 111, 112, 115, 119	FLOOR: 2" CONG. SLAB MONOLITHIC FINISH (FUTURE LINOLEUM) BASE: CEMENT WALLS: SAND FINISH GYPSUM PLASTER ON ROCK LATH CEILING: SAND FINISH GYPSUM PLASTER ON METAL LATH 3/8" R. TRIM: WOOD
102, 114, 115, 116	FLOOR: CEMENT FLOOR MONOLITHIC FINISH-WATER PROOFING SEE DETAILS M.D. DWG. 840 BASE: TILE FLOOR ALTERNATE WALLS: PORTLAND CEMENT PLASTER ON METAL LATH CEILING: PORTLAND CEMENT PLASTER ALTERNATE TRIM: WOOD
107, 108, 110, 111, 112, 113, 118	FLOOR: 2" CONG. SLAB MONOLITHIC FINISH (LINOLEUM FLOOR ALTERNATE) BASE: CEMENT (TILE ALTERNATE) WALLS: SAND FINISH GYPSUM PLASTER ON ROCK LATH CEILING: SAND FINISH GYPSUM PLASTER ON METAL LATH 3/8" R. TRIM: WOOD

ALL REGIMENTAL INFIRMARIES, EXCEPT THAT AT MUMFORD POINT TO HAVE LINOLEUM FLOORS INSTALLED IN ROOMS 100, 101, 103 - 104, 105, 106 - 107, 108, 109 - 111, 113, 115.



DOOR SCHEDULE

DOOR OPENING NUMBER	SIZE	LTS	PANELS	REMARKS
(1)	2'-2 1/4" x 7'-0" x 1 3/4"	4	3	SEE ELEVATION
(2)	3'-0" x 7'-0" x 1 3/4"	6	3	
101, 105, 106, 109, 111	2'-8" x 7'-0" x 1 3/4"	-	5	STOCK CROSS RAISED PANELS
103, 107	3'-0" x 7'-0" x 1 3/4"	-	5	"
113	3'-6" x 7'-0" x 1 3/4"	-	5	"
102, 111, 112, 114, 115, 116	2'-6" x 7'-0" x 1 3/4"	-	5	"
107, 110	2'-8" x 7'-0" x 1 3/4"	-	5	"
108	2'-8" x 7'-0" x 1 3/4"	-	5	DUTCH DOOR SEE DETAIL
SCREEN DOORS	T. MATCH X 1 3/8"	-	2	

1100 8/11/42 119-221-324-461-500

SCHEDULE OF CURRENT ROOM USAGE - ROOM NO.

ROOM NO.	100	101	103	107	108	109	112	113	115	118	119
119	Waiting	Den't	Offices	Lab.	Pharm.	Surgeon	Office	Waiting	Med. Office	Reg. Clerk	120
221	do	do	do	do	do	do	do	do	do	do	do
324	do	do	do	do	do	do	do	do	do	do	do
421	do	do	do	do	do	do	do	do	do	do	do
520	do	do	do	do	do	do	do	do	do	do	do
BB-10	do	S.D.	do	do	do	do	do	do	do	do	do
RR-12	Waiting	Offical	D.D.	Offical	Offical	Offical	Offical	Offical	Offical	Offical	Offical

GENERAL NOTES:

- ALL EXTERIOR STUDS STRIP STEEL 2 1/2" O.C.
- ALL INTERIOR STUDS 2" x 4" OR 2" x 6" WOOD AS NOTED
- EQUIPMENT SHOWN WITH LIGHT SOLID LINE IS TO BE PURCHASED UNDER THE CONSTRUCTION CONTRACT & BE CHARGED TO PROJ. P-409-3.
- EQUIPMENT SHOWN WITH LIGHT DOTTED LINES IS TO BE PROVIDED BY THE BUREAU OF MEDICINE & SURGERY.
- OTHER EQUIPMENT SHOWN WITH SOLID LINES TO BE AS SPECIFIED.

WINDOW SCHEDULE

OPENING NUMBER	SIZE	LTS	TYPE	REMARKS
(1) TO (10)	5'-1 1/4" x 4'-8 3/8"	12	STEEL D.H.	3" x 3/8" x 1/2" STEEL LINTEL
(11) TO (13)	2'-9 1/4" x 4'-0 3/8"	12	STEEL D.H.	3" x 3/8" x 1/2" STEEL LINTEL BOTTOM SASH OBSCURE GLASS
(14) TO (16)	2'-8" x 2'-8 1/2"	9	WOOD JAMB	SEE DETAIL

REV. E Windows changed to door 8/11/42 119-221-324-461-500

CARR & J. E. GREINER CO. - ARCHITECT-ENGINEERS
DURHAM, N. C. BALTIMORE, MD.
MARINE BARRACKS - NEW RIVER, N. C.
BUREAU OF YARDS AND DOCKS - U. S. NAVY.

REGIMENTAL INFIRMARY
FLOOR PLAN

THIS PLAN SUPERSEDES DWG 838 OF M.D. PROJ. 101-4 FOR M.D. PROJECTS 1107-4, 1200-4, 1202-30, 1203-14.

APPROVED: [Signature] 8/25/42
RESIDENT OFFICER IN CHARGE

ARCHITECT-ENGINEERS SPECIFICATION NO. 807.

SCALE 1/4" = 1'-0"

162593

NO. 807

2884

B10G
119

B10G 119-221-324-461-500-BB10-ARR12

BIDG

119