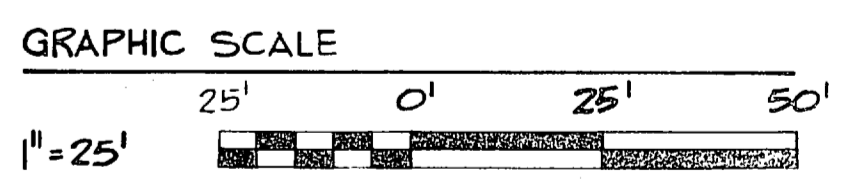
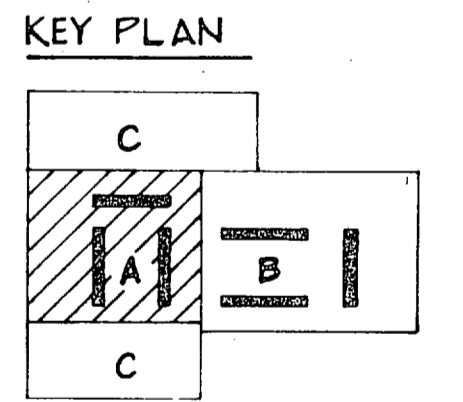
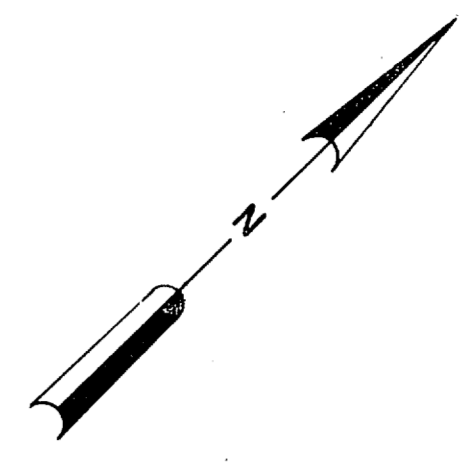
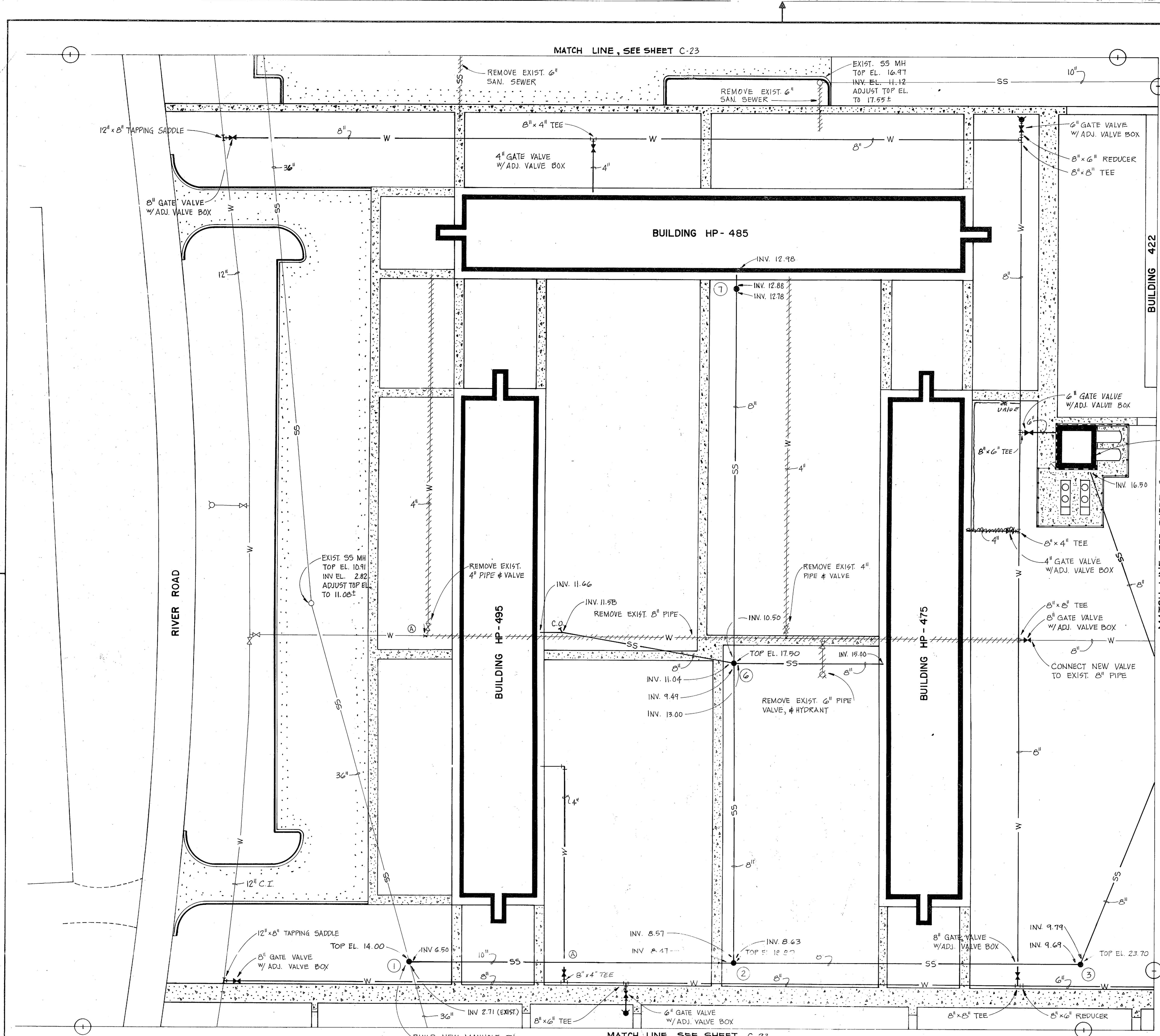
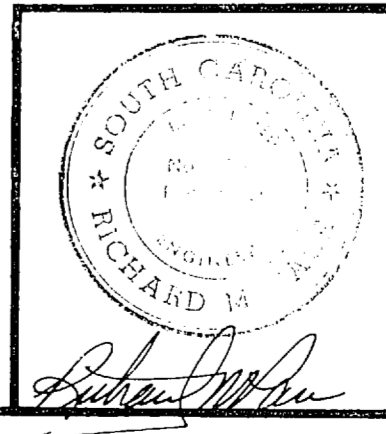


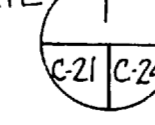
REVISIONS			
SYM	DESCRIPTION	DATE	APPROVED
Ⓐ	REVISED AS-BUILT	10/2/83	ML



<b>RECORD DRAWING</b>		<b>LETTER DATED</b> OCT 1 1983		<b>C-21</b>	
<b>MBTB ARCHITECTS ENGINEERS</b> P.O. BOX 1508 GREENVILLE, S.C. 293700		DEPARTMENT OF THE NAVY NAVAL FACILITIES ENGINEERING COMMAND <b>ATLANTIC DIVISION</b> NORFOLK, VIRGINIA			
DES. PAGE	DR. DUNN	CHK. PAGE	CHK. ENGR.	DATE	11/2/83
PROJ. MGR.	PAGE	CHK. ENGR.	RUNES	DATE	
SUBMITTED BY		DATE			
FIRM MEMBER		PRINCIPAL			
APPROVED:	DATE:	APPROVED:	DATE:		
OFFICER IN CHARGE		NAVAC DRAWING NO.	419247		
APPROVED:	DATE:	SIZE	F 80091		
FOR EFD FOR COMMANDER, NAVFAC		SCALE: AS SHOWN	SPEC. 05-81-1689	SHEET 23 OF 83	

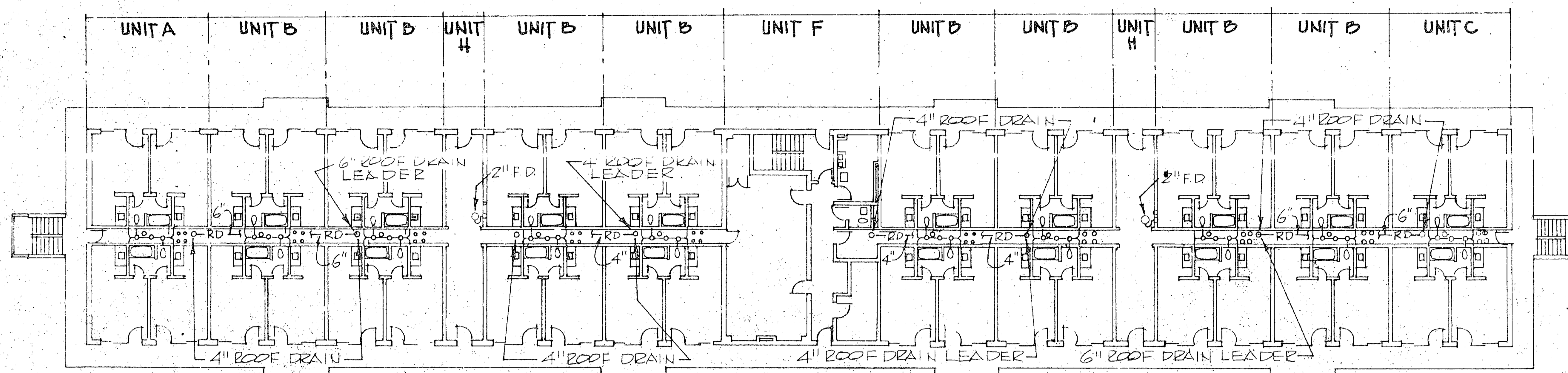


BUILD NEW MANHOLE ON EXIST. 36" RCP SEWER MAIN. SEE DETAIL.

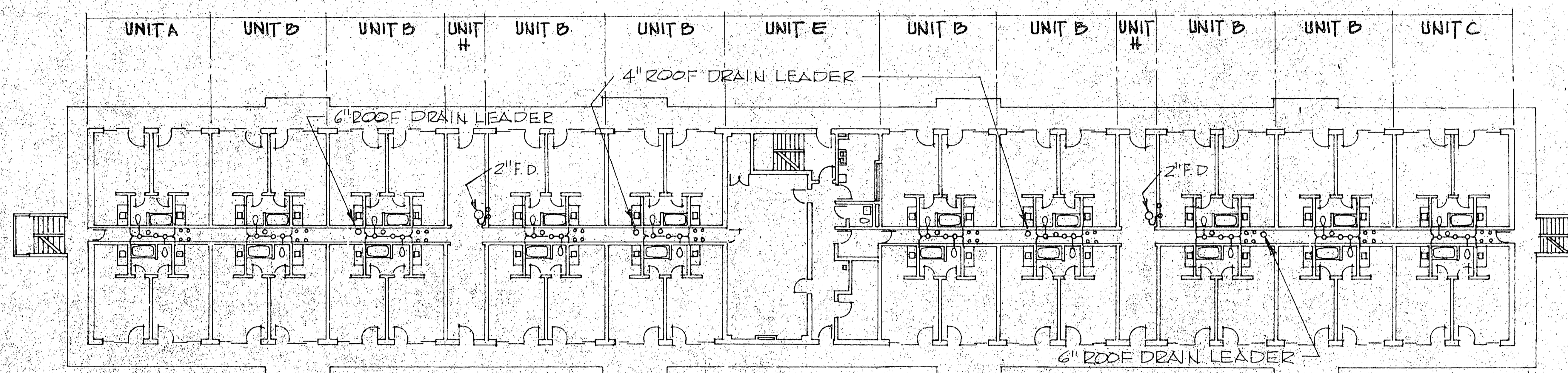




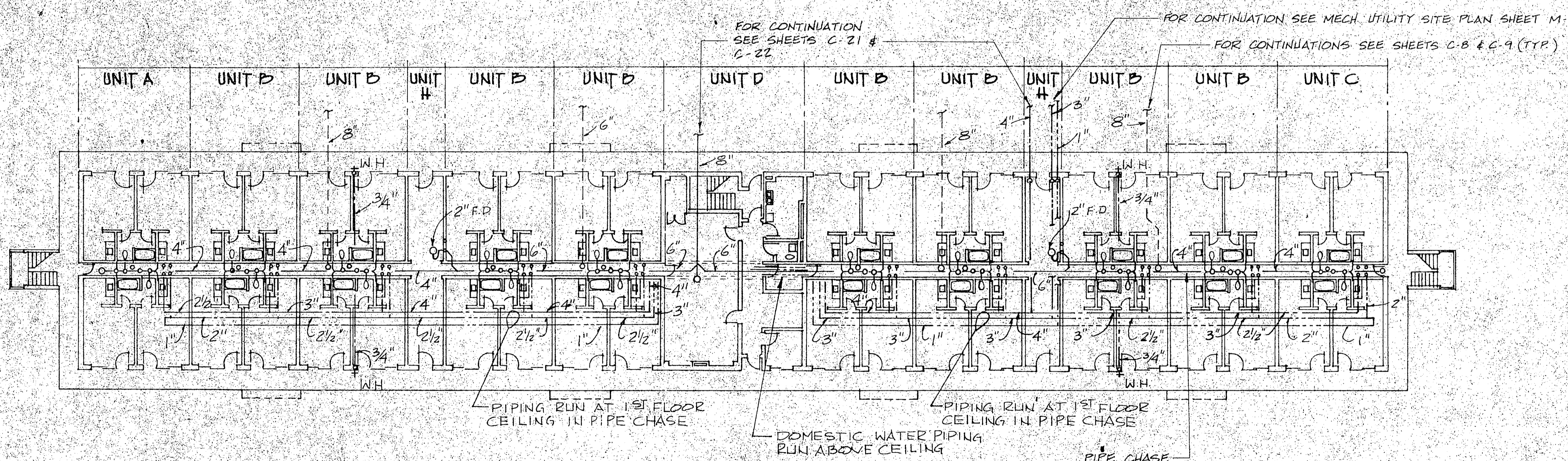
REVISIONS			
SYM	DESCRIPTION	DATE	APPROVED



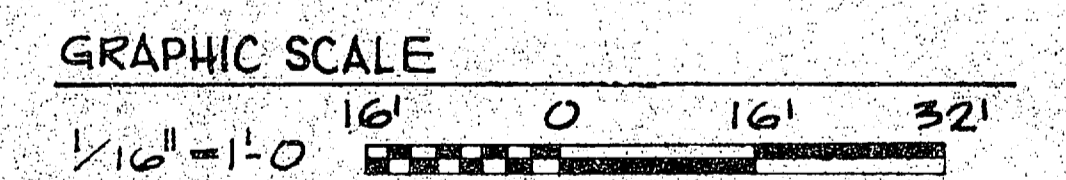
THIRD FLOOR PLAN - TYPE I 1/16" = 1'-0"



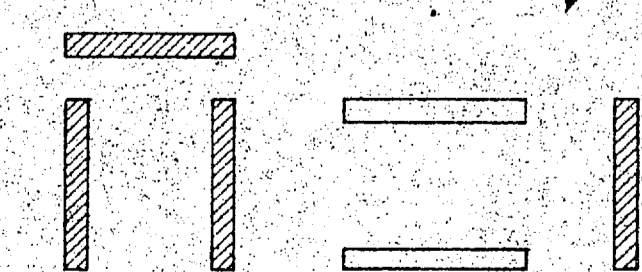
SECOND FLOOR PLAN - TYPE I 1/16" = 1'-0"



FIRST FLOOR PLAN - TYPE I 1/16" = 1'-0"



KEY PLAN

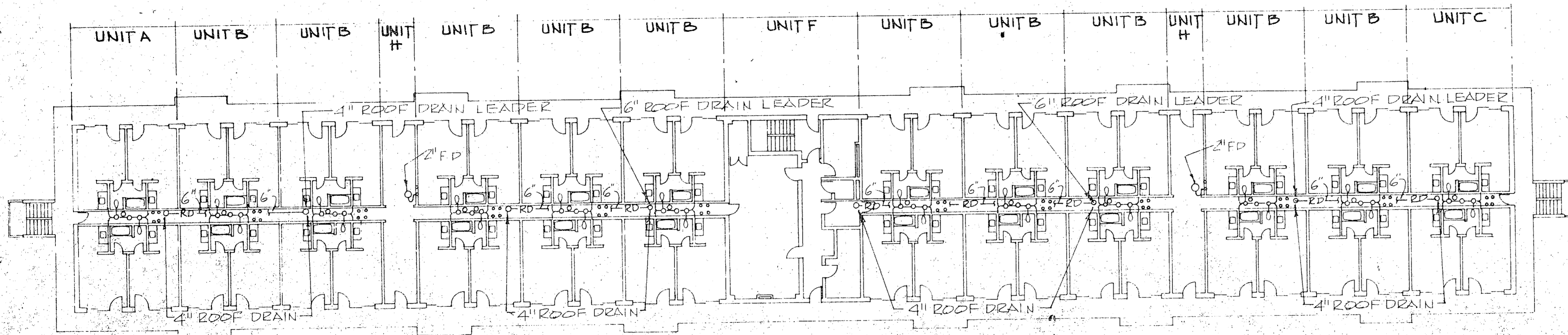


<b>MBTB ARCHITECTS ENGINEERS</b> P.O. BOX 1308 GREENVILLE, S.C. 29237-0008		DEPARTMENT OF THE NAVY - NAVAL FACILITIES ENGINEERING COMMAND <b>ATLANTIC DIVISION</b>	
		NAVAL STATION <b>MCB</b>	NORFOLK, VIRGINIA <b>CAMP LEJEUNE, N. C.</b>
PROJ. MGR. PACE / CH. ENGR. BUNBES SUBMITTED BY: <i>[Signature]</i> DATE: <i>[Date]</i> FIRM MEMBER: <i>[Signature]</i> RVD. <i>[Signature]</i> PRINCIPAL	UNACCOMPANIED ENLISTED PERSONNEL HOUSING <b>PLUMBING PLANS - TYPE I</b>		
HD. APPROVED: <i>[Signature]</i> DATE: <i>[Date]</i> OFFICER IN CHARGE: <i>[Signature]</i> DATE: <i>[Date]</i> APPROVED: <i>[Signature]</i> DATE: <i>[Date]</i>	SIZE: <b>F</b> CODE IDENT. NO.: <b>80091</b>	NAVFAC DRAWING NO.: <b>419277</b> CONSTR. CONTR. NO. <b>N62470-81-B-1689</b>	<b>P-1</b>
FOR EFD FOR COMMANDER, NAVFAC	SCALE: AS SHOWN SPEC. 05-81-1689	SHEET <b>53</b> OF <b>85</b>	EFD. DWG. NO. <b>219277</b>

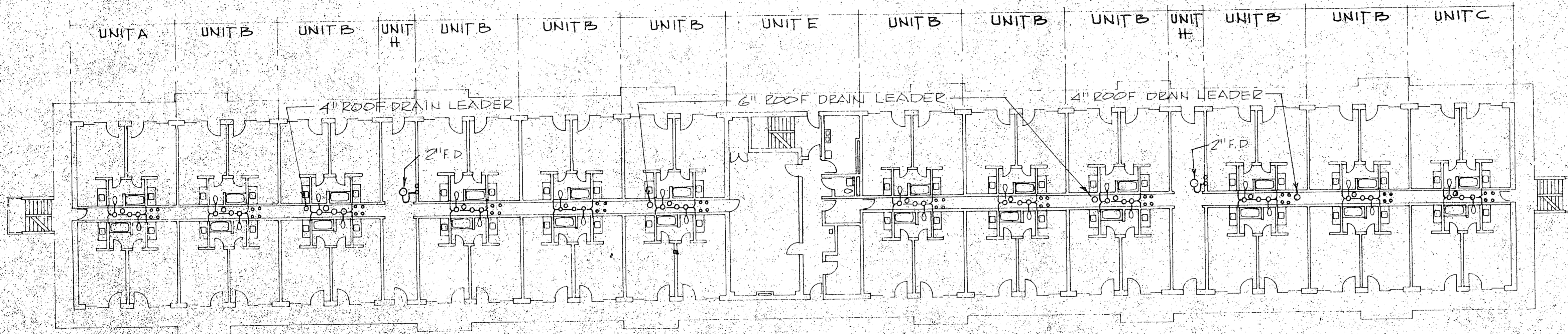
PRINT MACHINE INC.



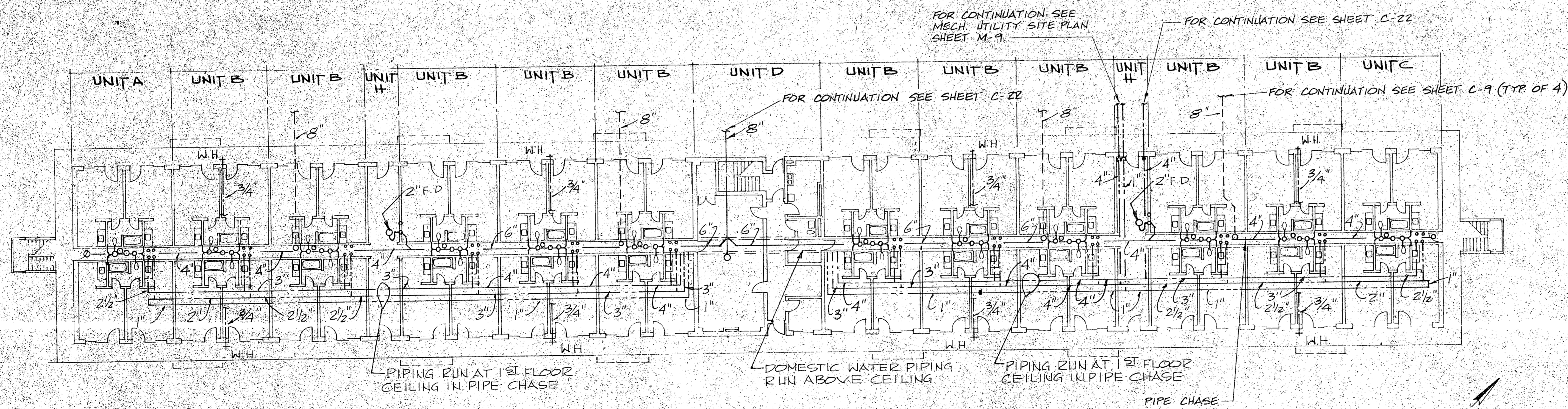
REVISIONS			
SYM	DESCRIPTION	DATE	APPROVED



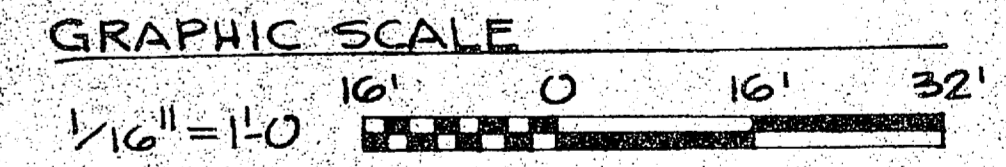
THIRD FLOOR PLAN - TYPE II 1/16" = 1'-0"



SECOND FLOOR PLAN - TYPE II 1/16" = 1'-0"

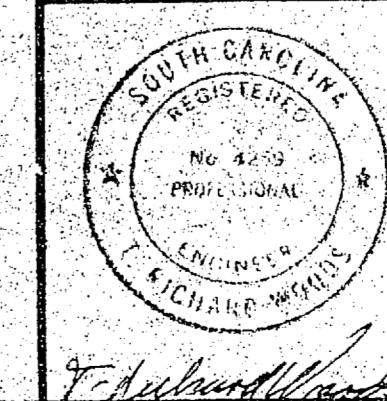


FIRST FLOOR PLAN - TYPE II 1/16" = 1'-0"



P-2

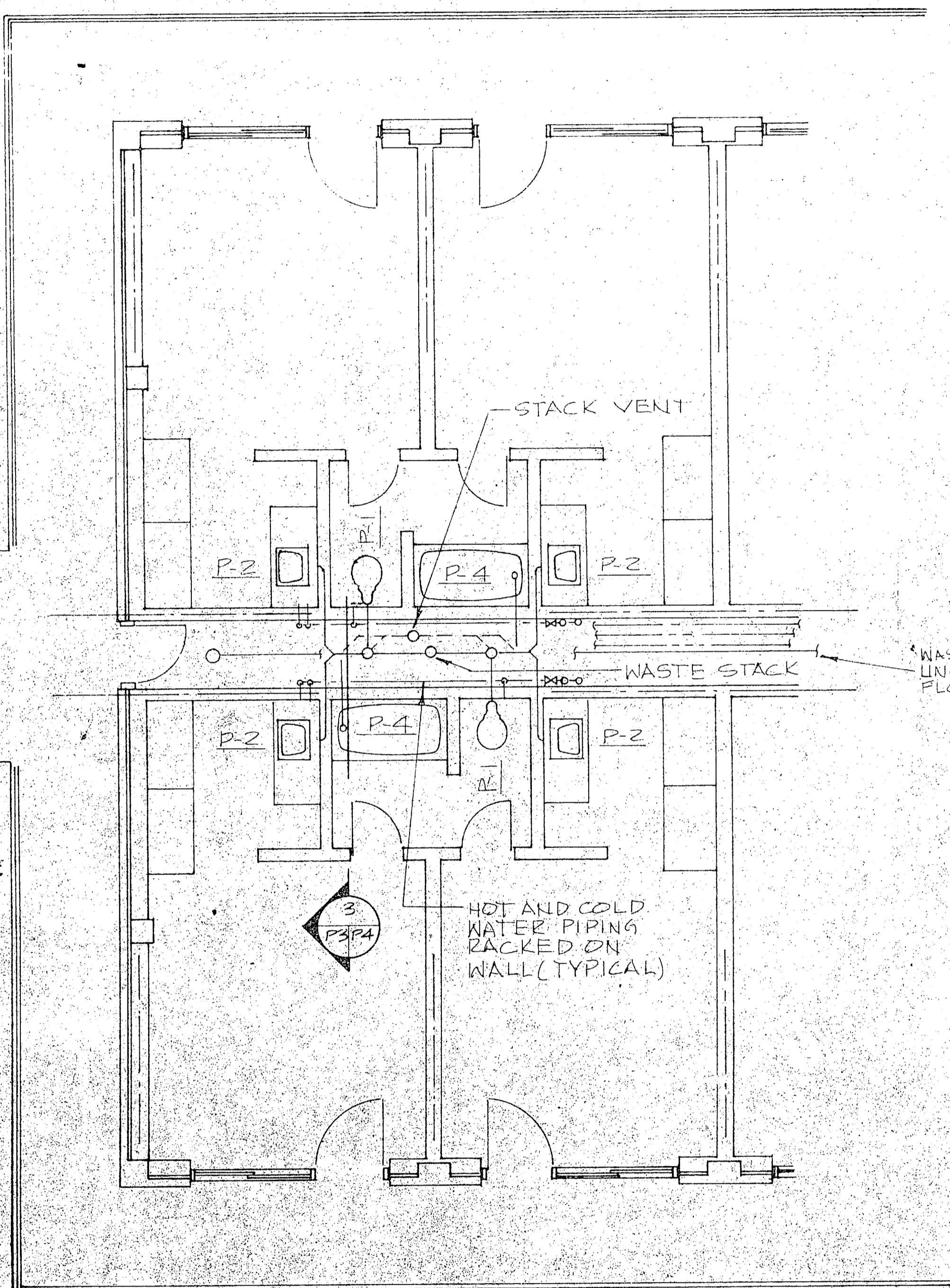
<b>MBTB ARCHITECTS ENGINEERS</b> P.O. BOX 1508 GREENVILLE, S.C. 29610		DEPARTMENT OF THE NAVY NAVAL FACILITIES ENGINEERING COMMAND <b>ATLANTIC DIVISION</b> NAVAL STATION NORFOLK, VIRGINIA	
DES. WOODS DR. CASAD CHK. WOODS PROJ. MGR. FACE CH. ENGR. DUNES SUBMITTED BY: DATE: 9/28/64 FIRM MEMBER PRINCIPAL EFD, P.P. RVD.		<b>MCB UNACCOMPANIED ENLISTED PERSONNEL HOUSING</b> <b>CAMP LEJEUNE, N. C.</b> <b>PLUMBING PLANS -</b> <b>TYPE II</b>	
NO. 4259 REGISTERED PROFESSIONAL ENGINEER VIRGINIA		SIZE CODE IDENT. NO. NAVFAC DRAWING NO. <b>F 80091 4119278</b>	
APPROVED: DATE: 9/28/64 OFFICER IN CHARGE		CONSTRUCTION CONTRACT NO. N62470-81-B-1689 SCALE: AS SHOWN SPEC. 05-81-1689 SHEET 54 OF 55	



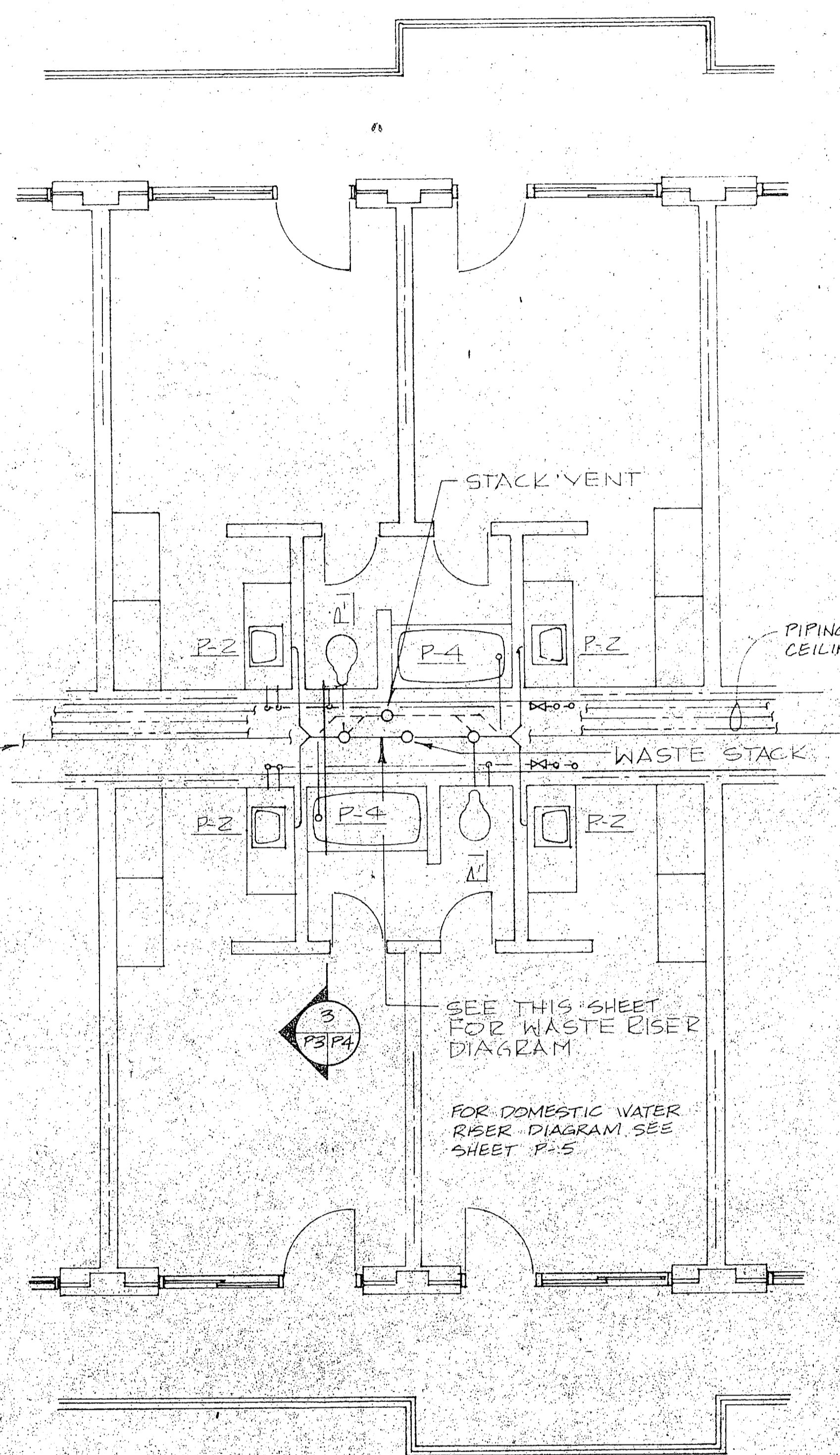
PRINT MACHINE INC.



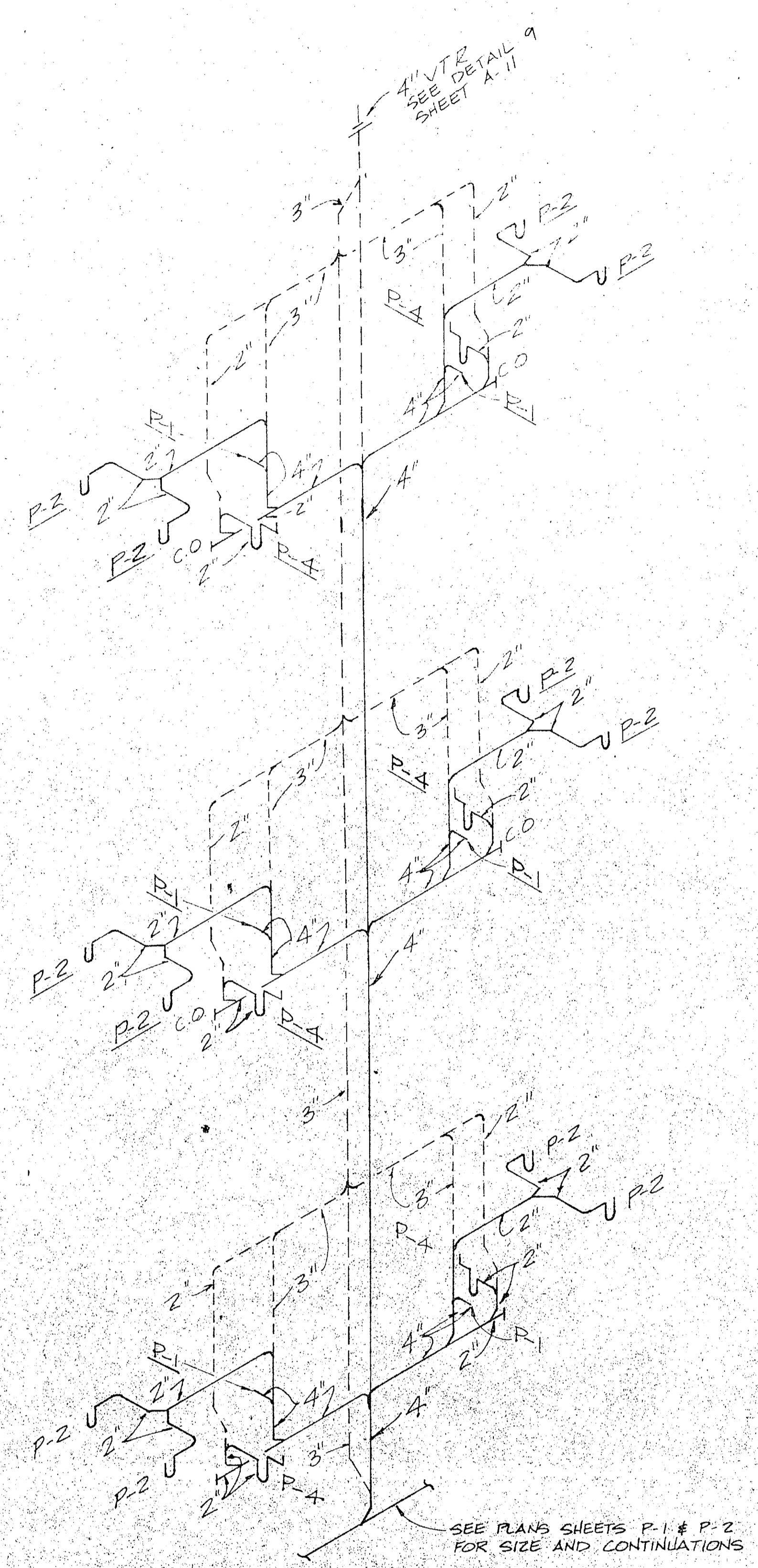
REVISIONS			
SYM	DESCRIPTION	DATE	APPROVED



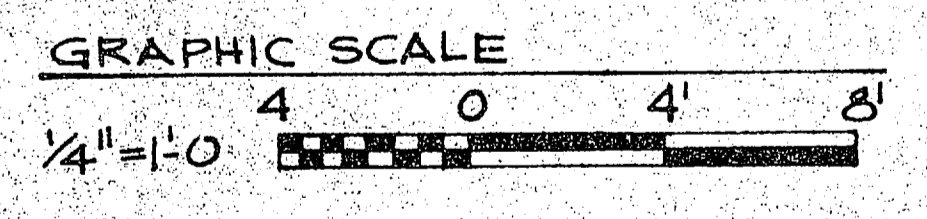
1<sup>ST</sup> FLOOR PLAN - UNIT "A" (2<sup>ND</sup> & 3<sup>RD</sup> FLRS. SIM.) 1/4" = 1'-0"  
UNIT "C" REVERSED



1<sup>ST</sup> FLOOR PLAN - UNIT "B" (2<sup>ND</sup> & 3<sup>RD</sup> FLRS. SIM.) 1/4" = 1'-0"  
TYPICAL INTERIOR SLEEPING ROOM



WASTE RISER DIAGRAM - UNITS "A" & "B"  
NO SCALE



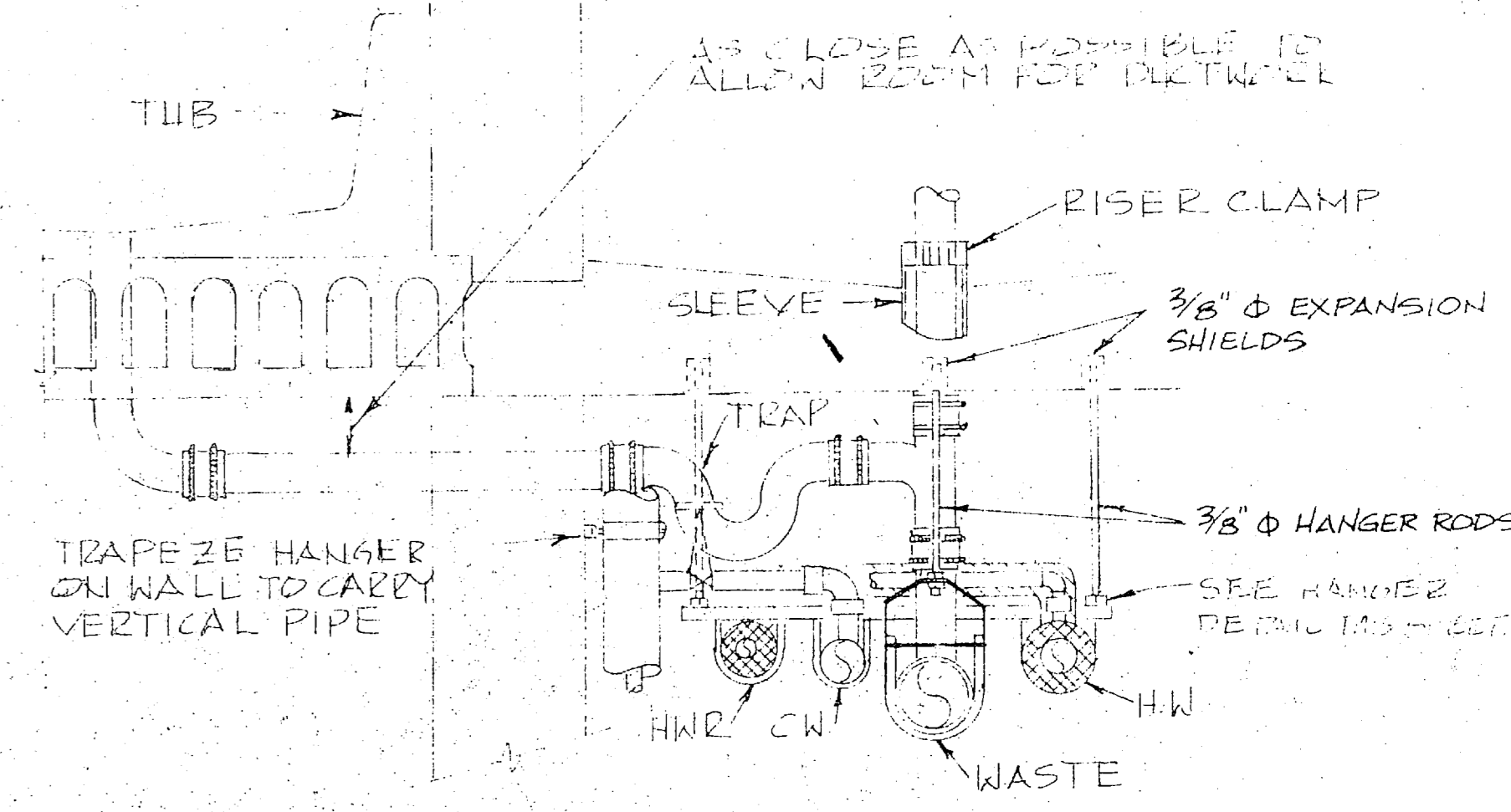
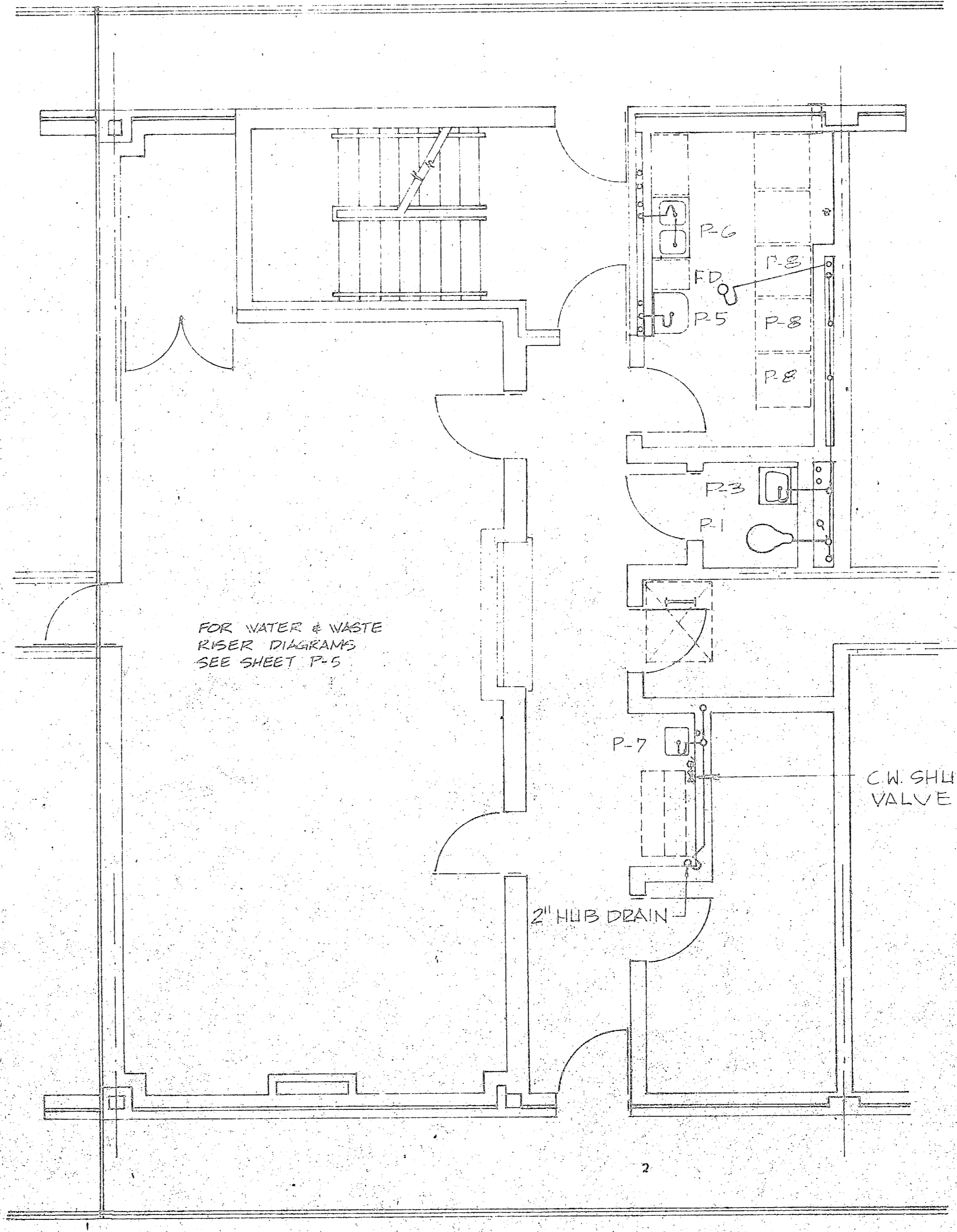
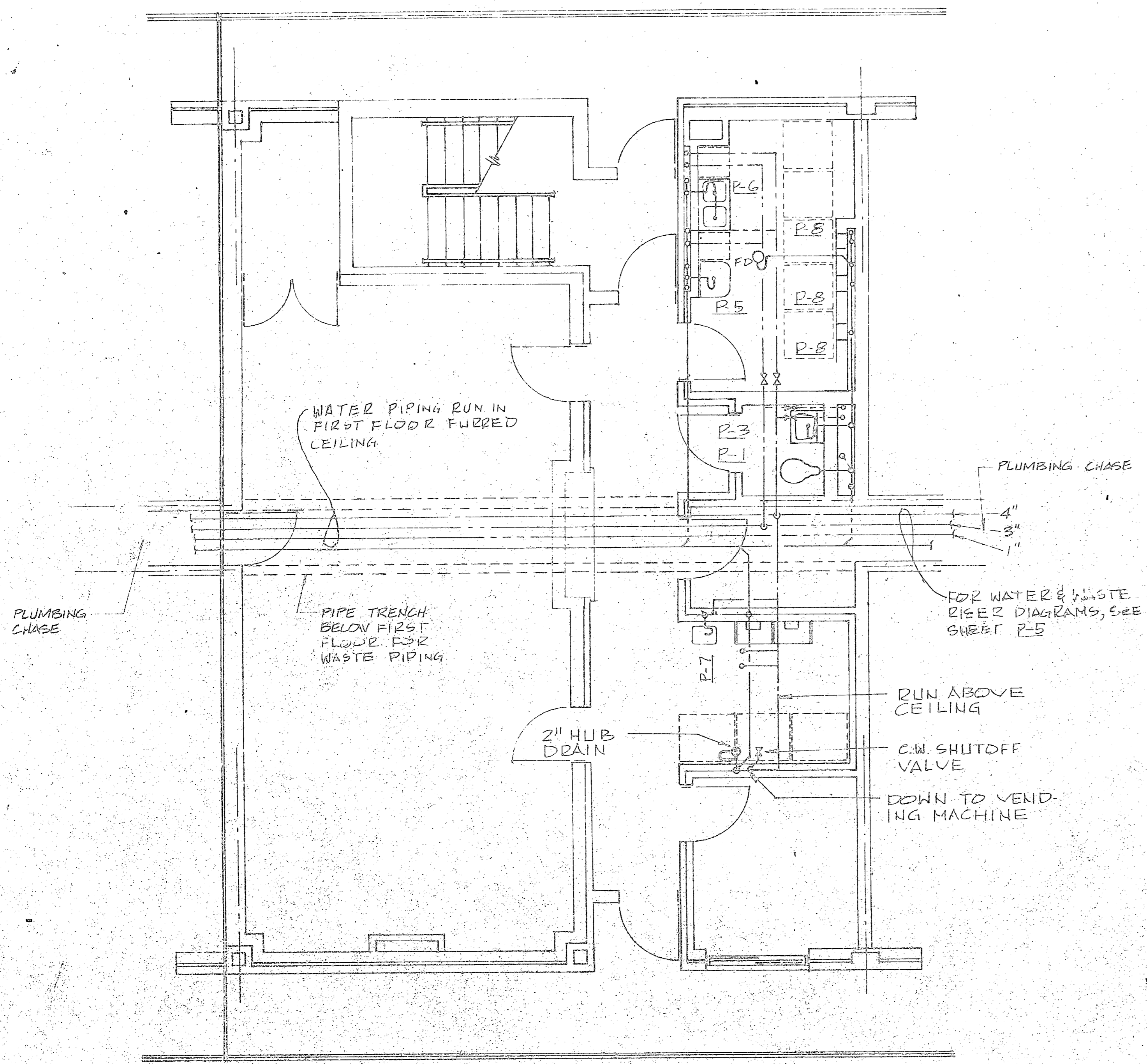
<b>MBTB ARCHITECTS ENGINEERS</b> P.O. BOX 1508 GREENVILLE, S.C. 2923700		DEPARTMENT OF THE NAVY NAVAL FACILITIES ENGINEERING COMMAND <b>ATLANTIC DIVISION</b>	
		NAVAL STATION <b>MCB</b>	NORFOLK, VIRGINIA <b>CAMP LEJEUNE, N. C.</b>
DESIGNED BY: DR. CASAD CHECKED BY: CHK. WOODS		UNACCOMPANIED ENLISTED PERSONNEL HOUSING <b>TYPICAL PLUMBING PLANS - UNIT "A" &amp; "B"</b>	
SUBMITTED BY: [Signature] DATE: 1/16/84		NAVFAC DRAWING NO. 4119279	
FIRM MEMBER: [Signature] PRINCIPAL		CONSTR. CONTR. NO. N62470-81-B-1689	
APPROVED: [Signature] DATE: 1/16/84		SIZE: <b>F</b>	CODE IDENT. NO. <b>80091</b>
OFFICER IN CHARGE: [Signature]		SHEET 55 OF 85	
APPROVED: [Signature]		SCALE: AS SHOWN SPEC. 05-81-1689	

PRINT MACHINE INC.

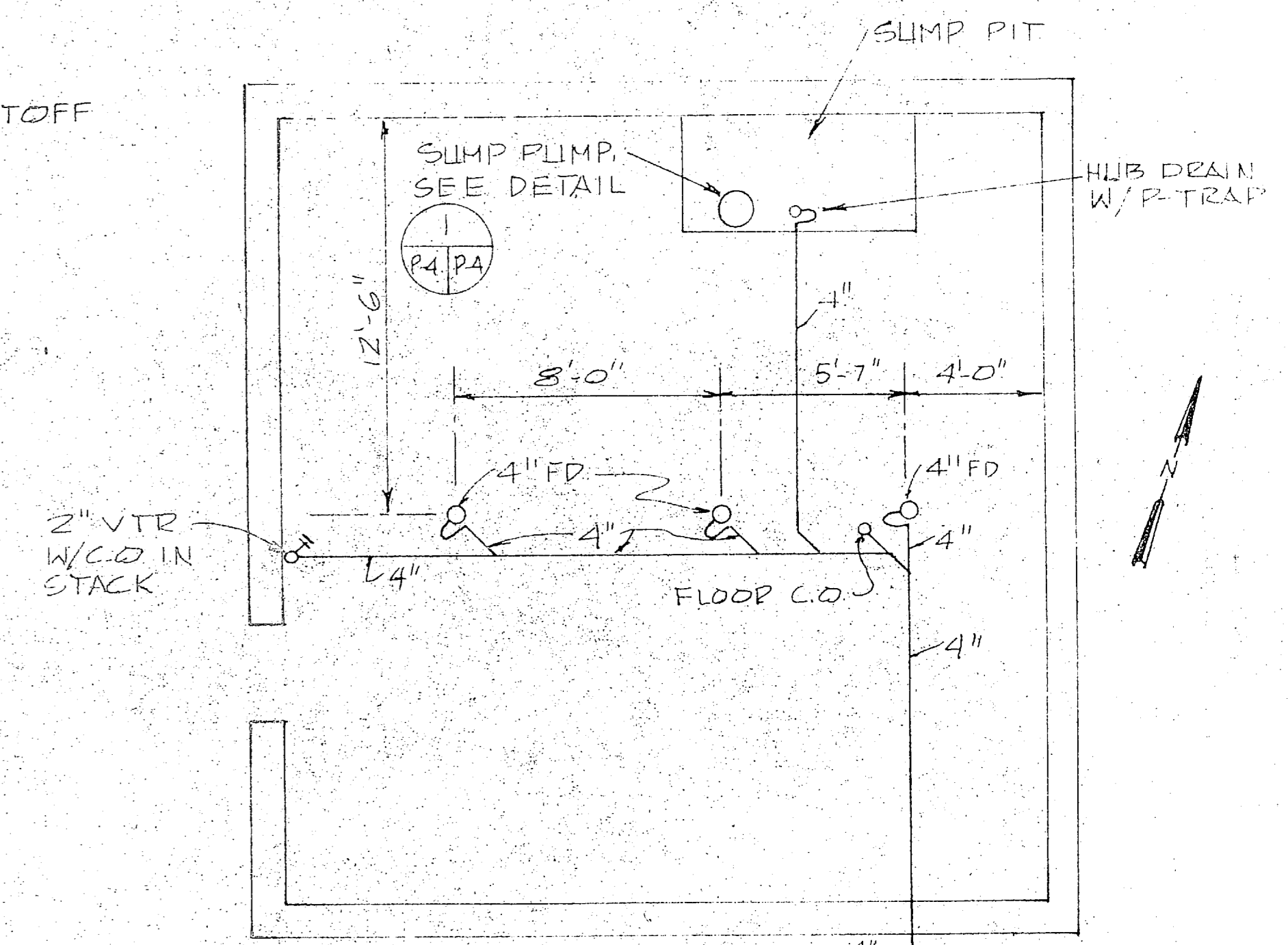




REVISIONS			
SYM	DESCRIPTION	DATE	APPROVED

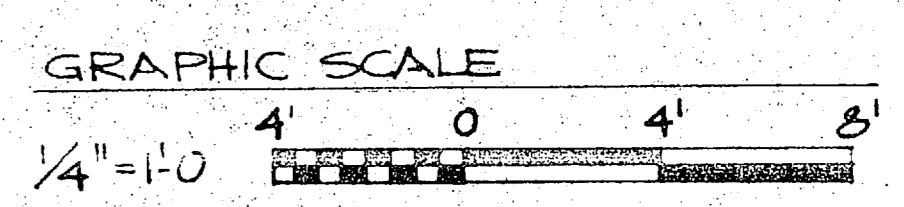


3 TUB DRAINAGE PIPING DETAIL  
NO SCALE



FOR CONTINUATION, SEE DWG. C-21  
INCREASE TO 8\"/>

4 DRAINAGE PLAN FOR MECH. EQUIP. BLDG.  
SCALE: 1/4\"/>

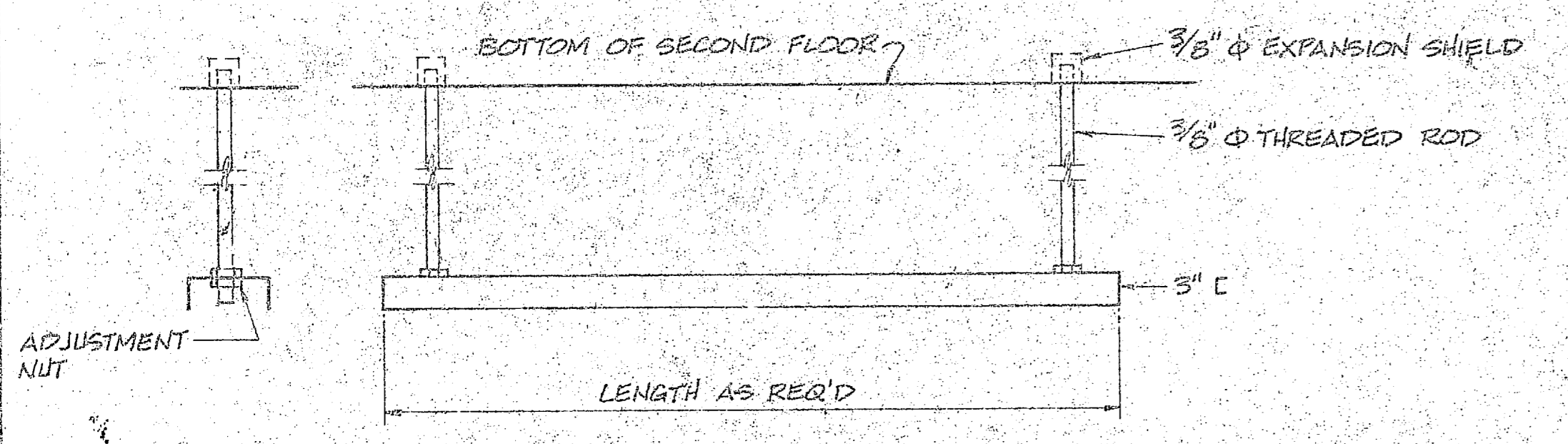


FLOOR PLAN - UNIT 'D' 1/4\"/>

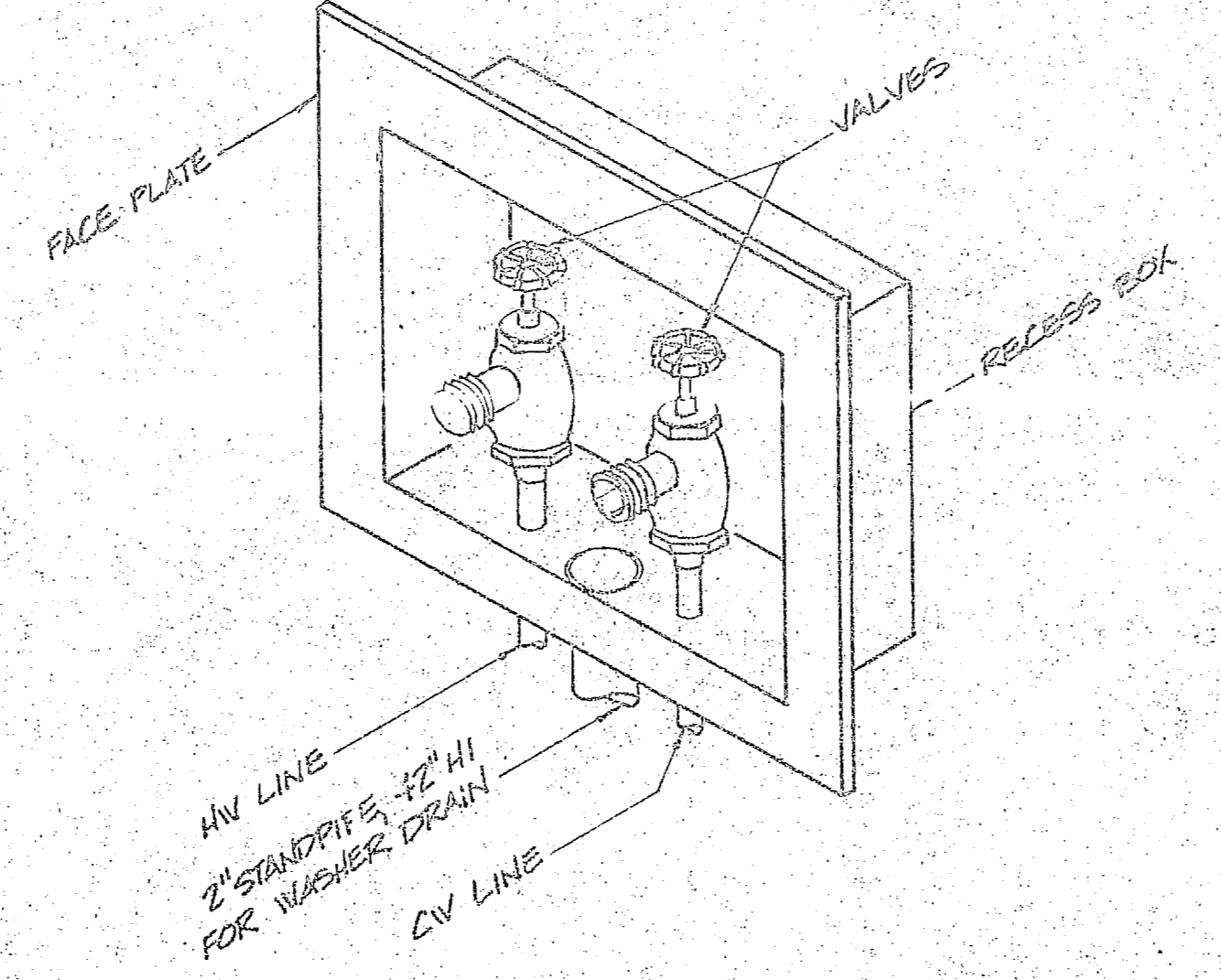
CENTRAL CORE - FIRST FLOOR

FLOOR PLAN - UNIT 'E' 1/4\"/>

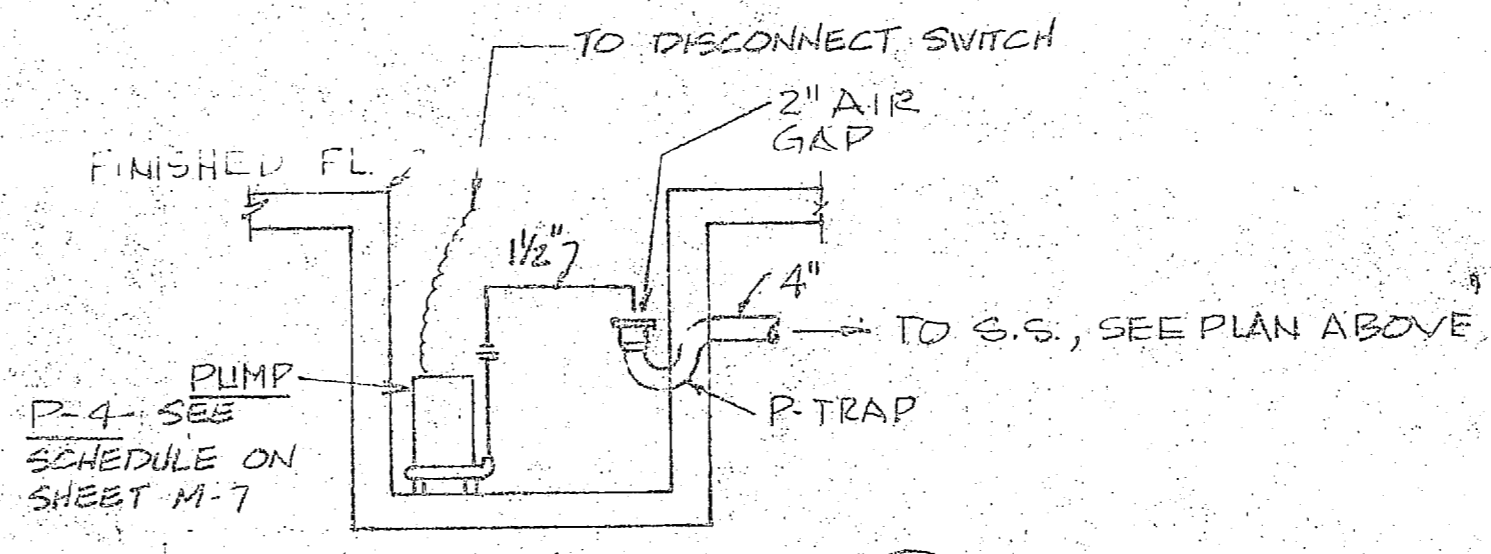
CENTRAL CORE - SECOND FLOOR  
UNIT 'F' CENTRAL CORE - THIRD FLOOR IS SIMILAR



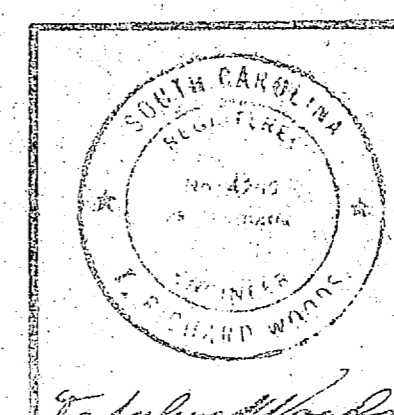
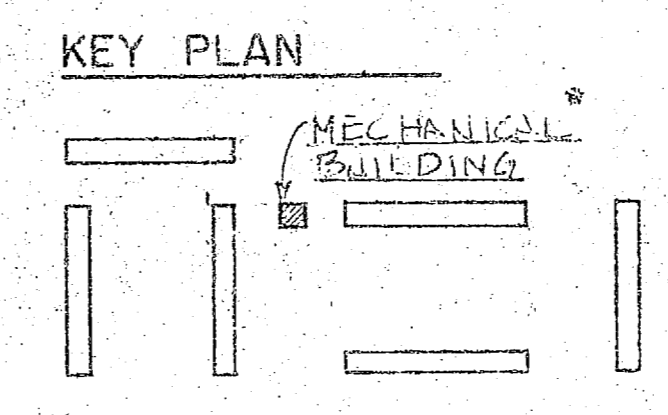
4 HANGER DETAIL  
NO SCALE



2 WASHING MACHINE VALVE BOX DETAIL  
NO SCALE



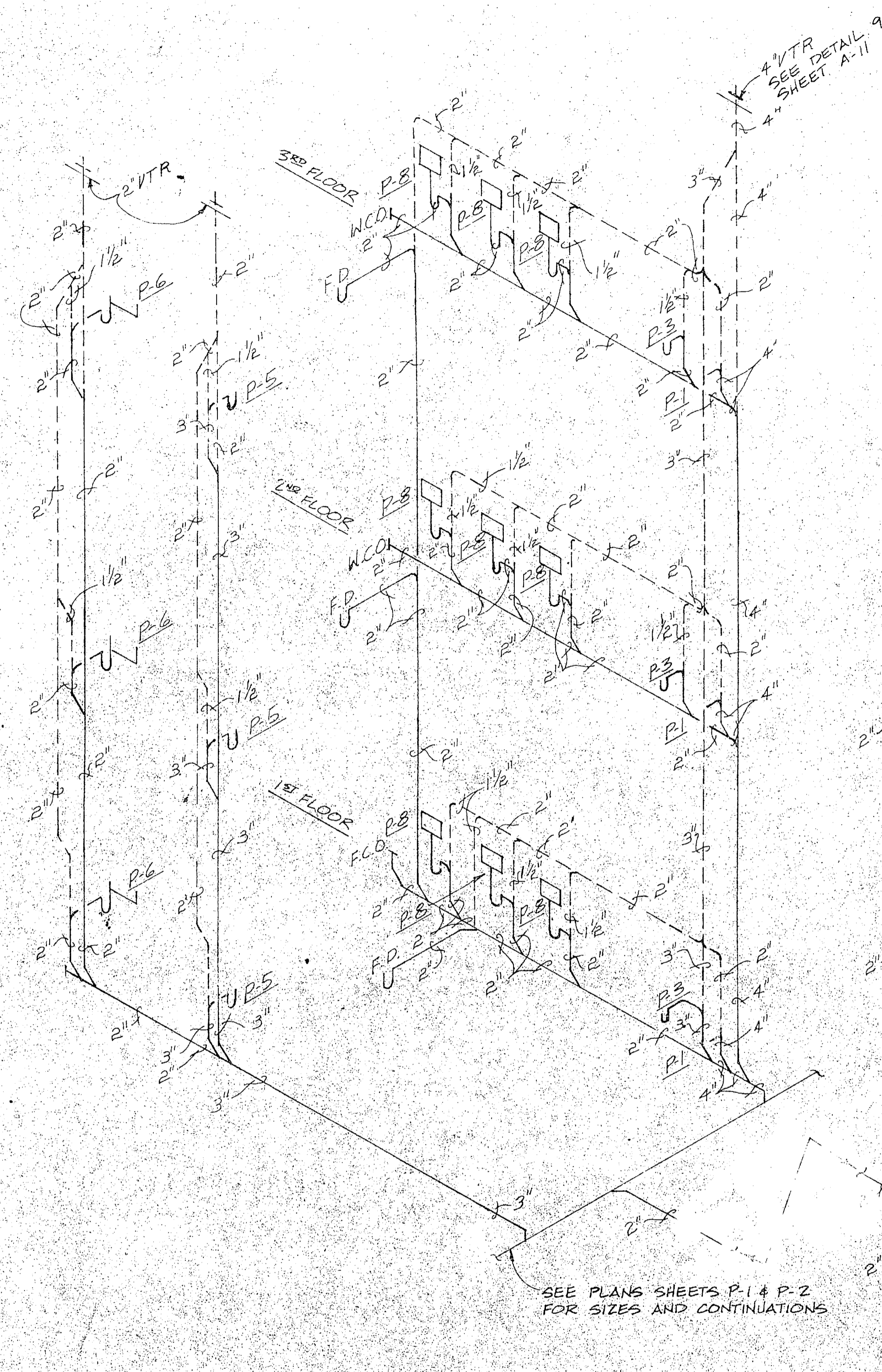
SUMP PUMP DETAIL  
NO SCALE



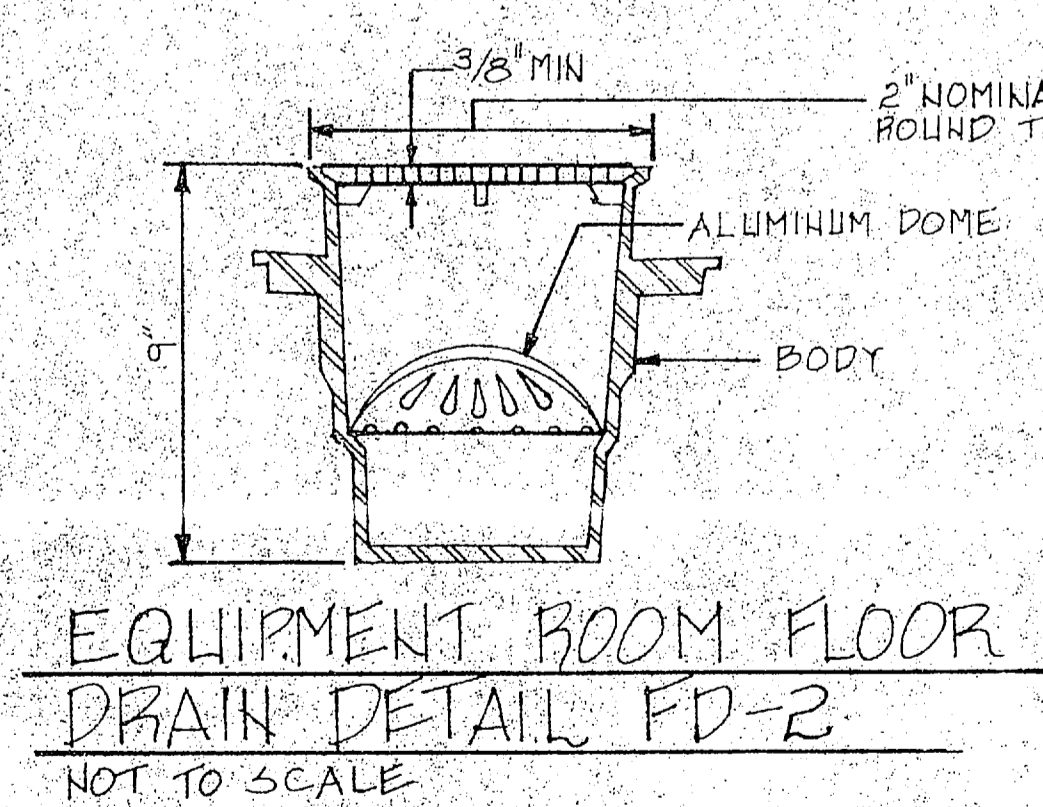
<b>P-4</b>		DEPARTMENT OF THE NAVY NAVAL FACILITIES ENGINEERING COMMAND	
MBTB ARCHITECTS ENGINEERS P.O. BOX 1584 GREENVILLE, SC 29616		ATLANTIC DIVISION	
DES. WOODS OR CASAD		NAVAL STATION NORFOLK, VIRGINIA	
PROJ. NO. 10000		MCB UNACCOMPANIED ENLISTED PERSONNEL HOUSING	
SUBMITTED BY: DATE: 11/84		CAMP LEJEUNE, N. C.	
MEMBER: PRINCIPAL		TYPICAL PLUMBING PLANS -	
EFD: FF		UNIT 'D', 'E' & 'F'	
NO. APPROVED: DATE: 11/84	DIR. DATE: 11/84	SIZE: F	CODE IDENT. NO.: 80091
OFFICER IN CHARGE	DATE: 11/84	NAVFAC DRAWING NO.: 419280	CONSTR. CONTR. NO. N62470-81-B-1689
FOR EFD FOR COMMANDER, NAVFAC		SCALE: AS SHOWN SPEC. 05-B-1689	SHEET 56 OF 85



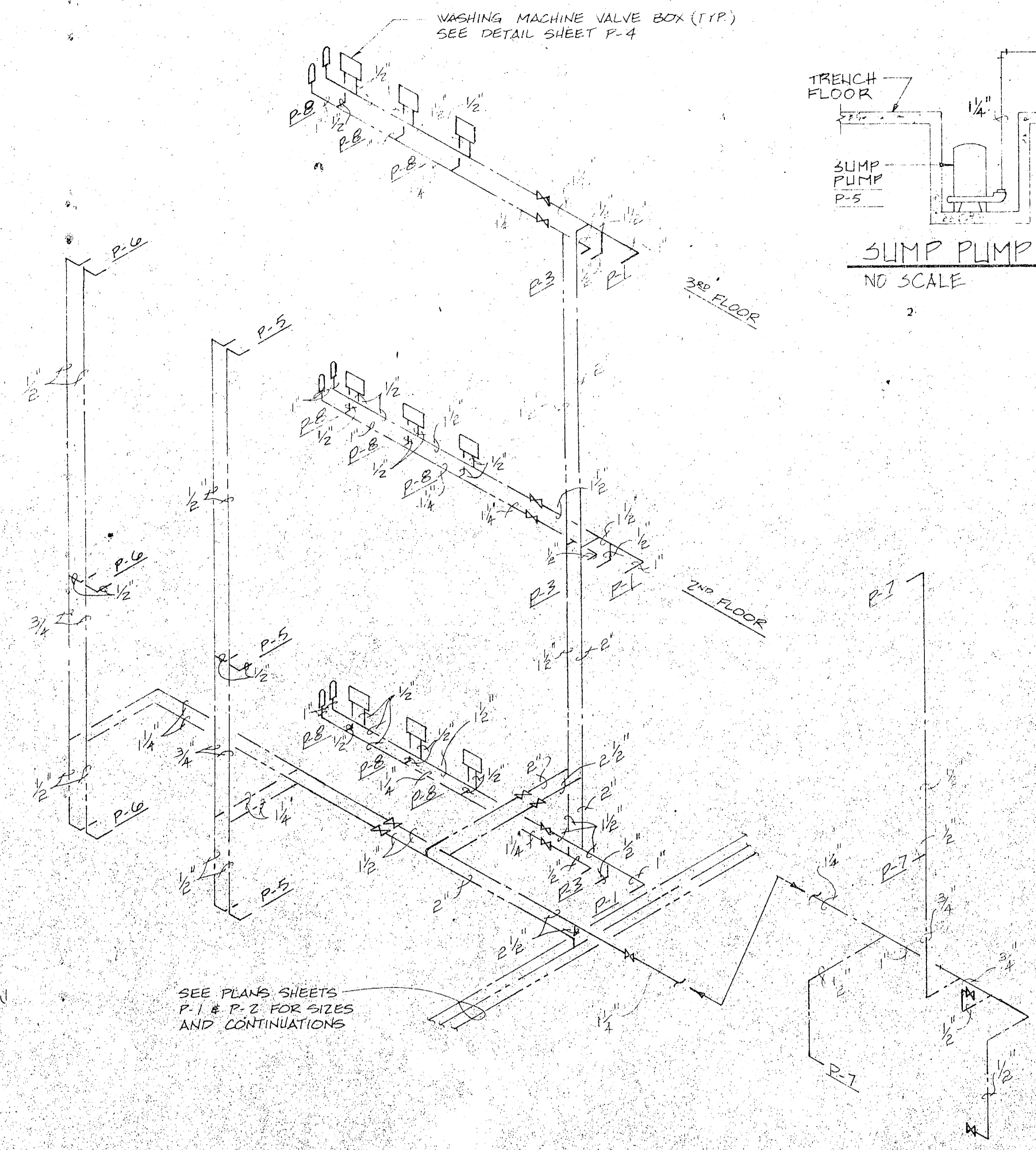
REVISIONS			
SYM	DESCRIPTION	DATE	APPROVED



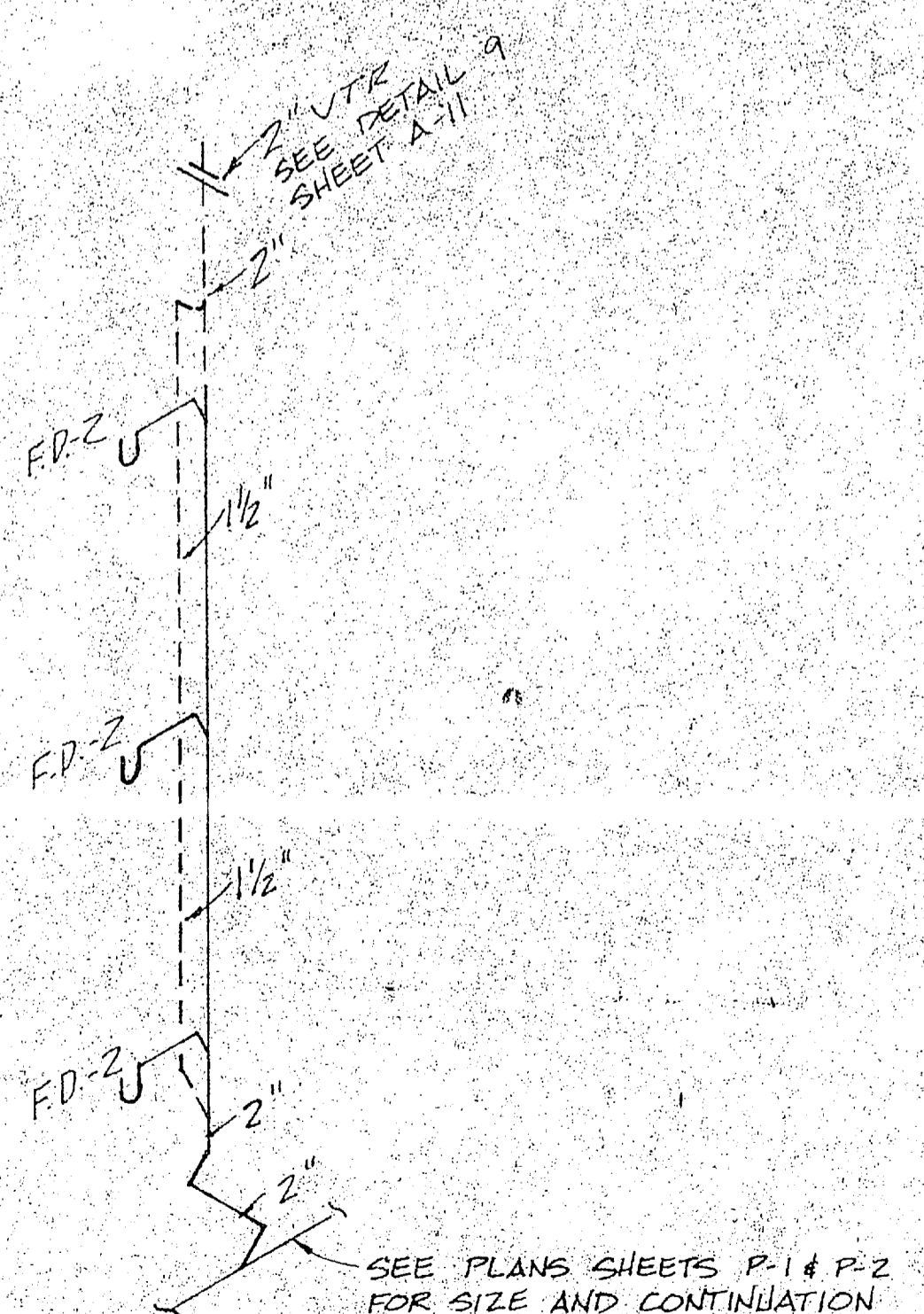
WASTE RISER DIAGRAM-UNITS D,E & F  
NO SCALE



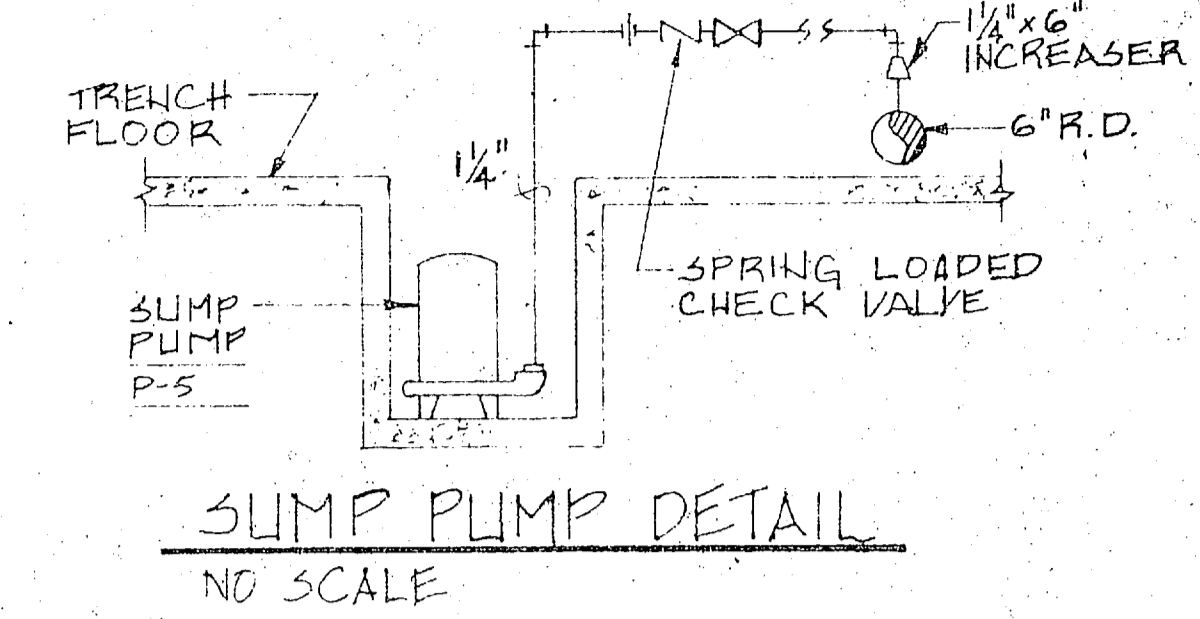
EQUIPMENT ROOM FLOOR  
DRAIN DETAIL FD-2  
NOT TO SCALE



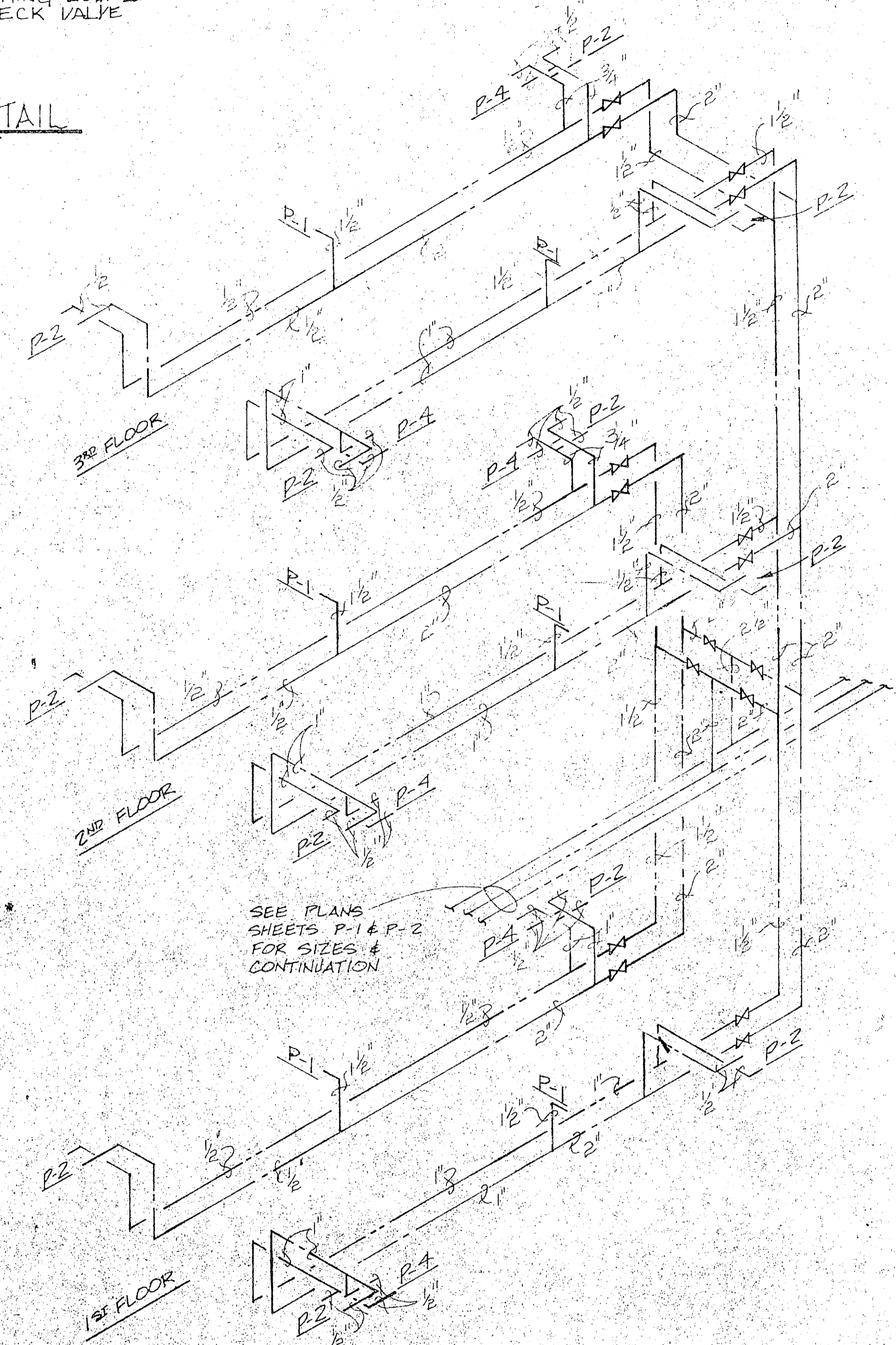
WATER RISER DIAGRAM-UNITS D,E & F  
NO SCALE



WASTE RISER DIAGRAM-UNIT 'H'



SUMP PUMP DETAIL  
NO SCALE



WATER RISER DIAGRAM-UNITS A,B & C  
NO SCALE

PLUMBING LEGEND

SYMBOL	DESCRIPTION
---	S OR W (SOIL OR WASTE)
---	CW (COLD WATER)
---	HW (HOT WATER)
---	HWR (HOT WATER RETURN)
---	SD (STORM DRAIN)
---	FCO (FLOOR CLEAN OUT)
○	R.D. (ROOF DRAIN)
---	WCO (WALL CLEAN OUT)
---	G.V. (GATE VALVE)
HB	HOSE BIBB
AP	A.P. (ACCESS PANEL)
WH	W.H. (WALL HYDRANT)
---	PIPE CLEANOUT
FD-1	FLOOR DRAIN
B/S	BELOW SLAB
FD-2	FLOOR DRAIN
⊥	WATER HAMMER ARRESTOR

PLUMBING SCHEDULE					
SYMBOL	FIXTURE TYPE	H.W.	C.W.	VENT	REMARKS
P-1	WATER CLOSET	1"	1"	4"	FLUSH VALVE *
P-2	LAVATORY	1/2"	1/2"	1 1/2"	COUNTER TOP
P-3	LAVATORY	1/2"	1/2"	1 1/2"	
P-4	TUB	1/2"	1/2"	3"	
P-5	SERVICE SINK	1/2"	1/2"	3"	
P-6	LAUNDRY TUB	1/2"	1/2"	1 1/2"	
P-7	WATER COOLER	1/2"	1/2"	1 1/2"	
P-8	WASH. MACHINE VALVE BOX	1/2"	1/2"	2"	

\* FLOOR MOUNTED BACK OUTLET

P-5

<b>MBTB ARCHITECTS ENGINEERS</b> P.O. BOX 1508 GREENVILLE, S.C. 29610		DEPARTMENT OF THE NAVY <b>ATLANTIC DIVISION</b>	
DES. WOODS DR. CASAD CHK. WOODS		NAVAL STATION NORFOLK, VIRGINIA	
PROJ. MGR. PAGE CH. ENGR. BUNES		MCB CAMP LEJEUNE, N. C.	
SUBMITTED BY: [Signature] DATE: 8/25/64		UNACCOMPANIED ENLISTED PERSONNEL HOUSING	
FIRM MEMBER: PRINCIPAL		<b>PLUMBING RISER DIAGRAMS</b>	
APPROVED: [Signature]	DATE: 8/25/64	SIZE: F	CODE IDENT. NO.: 80091
OFFICER IN CHARGE: [Signature]	DATE: [Signature]	NAVFAC DRAWING NO.: 4119281	
FOR EFD FOR COMMANDER, NAVFAC		CONSTR. CONTR. NO. N62470-81-B-1689	
SCALE: AS SHOWN SPEC. 05-81-1689		SHEET 57 OF 27	
		EFD. DWG. NO. 219281	

