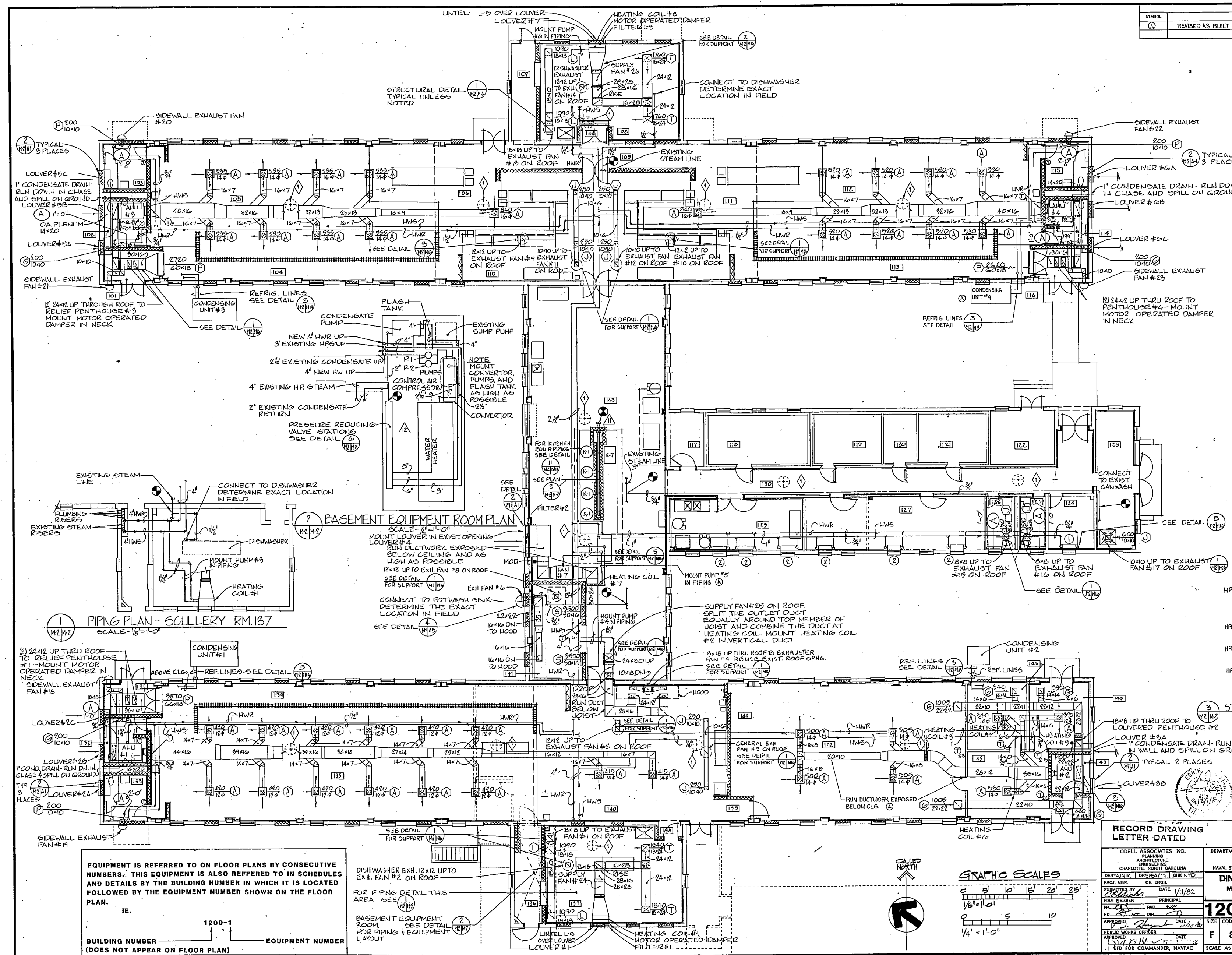


REVISIONS			
SYMBOL	DESCRIPTION	DATE	APPROVED
(A)	REVISED AS BUILT	11/1/84	RAS

Room Legend

- 101 VESTIBULE
- 102 WOMEN'S TOILET
- 103 MEN'S TOILET
- 104 CORRIDOR
- 105 DINING ROOM
- 106 FULL SERVICE
- 107 SOIL WARE DROP
- 108 SCULLERY
- 109 CORRIDOR
- 110 BACK COUNTER
- 111 FULL SERVICE
- 112 DINING ROOM
- 113 CORRIDOR
- 114 MEN'S TOILET
- 115 WOMEN'S TOILET
- 116 VESTIBULE
- 117 UTILITY
- 118 WALK-IN REF.
- 119 WALK-IN REF.
- 120 WALK-IN REF.
- 121 MECHANICAL
- 122 GARAGE ROOM
- 123 OFFICE
- 124 MEN'S TOILET
- 125 WOMEN'S TOILET
- 126 DRY STORAGE
- 127 SALAD PREPARATION
- 128 CORRIDOR
- 129 VESTIBULE
- 130 WOMEN'S TOILET
- 131 MEN'S TOILET
- 132 CORRIDOR
- 133 DINING ROOM
- 134 SOIL WARE DROP
- 135 SCULLERY
- 136 VESTIBULE
- 137 CORRIDOR
- 138 SHORT ORDER SERVICE
- 139 BACK COUNTER
- 140 FOOD SERVICE USE
- 141 FOOD PREPARATION
- 142 OFFICE
- 143 OFFICE RECEPTION
- 144 OFFICE
- 145 POT WASH
- 146 VESTIBULE
- 147 CLOSET



EQUIPMENT IS REFERRED TO ON FLOOR PLANS BY CONSECUTIVE NUMBERS. THIS EQUIPMENT IS ALSO REFERRED TO IN SCHEDULES AND DETAILS BY THE BUILDING NUMBER IN WHICH IT IS LOCATED FOLLOWED BY THE EQUIPMENT NUMBER SHOWN ON THE FLOOR PLAN.

IE. **1200-1**

BUILDING NUMBER (DOES NOT APPEAR ON FLOOR PLAN)

EQUIPMENT NUMBER

RECORD DRAWING
LETTER DATED NOV 14 1984

M-2

ODELL ASSOCIATES, INC.
ARCHITECTURE
CHARLOTTE, NORTH CAROLINA

DEPARTMENT OF THE NAVY
NAVAL FACILITIES ENGINEERING COMMAND
ATLANTIC DIVISION

NAVAL STATION
NORFOLK, VIRGINIA

DINING FACILITIES MODERNIZATION
MARINE CORPS BASE, CAMP LEJEUNE
NORTH CAROLINA

PROJECT NO. 1118-1-1000
DATE 1/11/82

DESIGNED BY [Signature]
CHECKED BY [Signature]
DATE 1/11/82

APPROVED BY [Signature]
DATE 1/11/82

1209 Mechanical Plan
Navfac Drawing No. 4076101

SIZE CODE IDENT. NO. F 80091
CONSTR. CONTR. NO. NC2470-00B-0083

SCALE AS SHOWN SPEC. 05-80-00B3 SHEET 40 OF 79

Bldg/209

