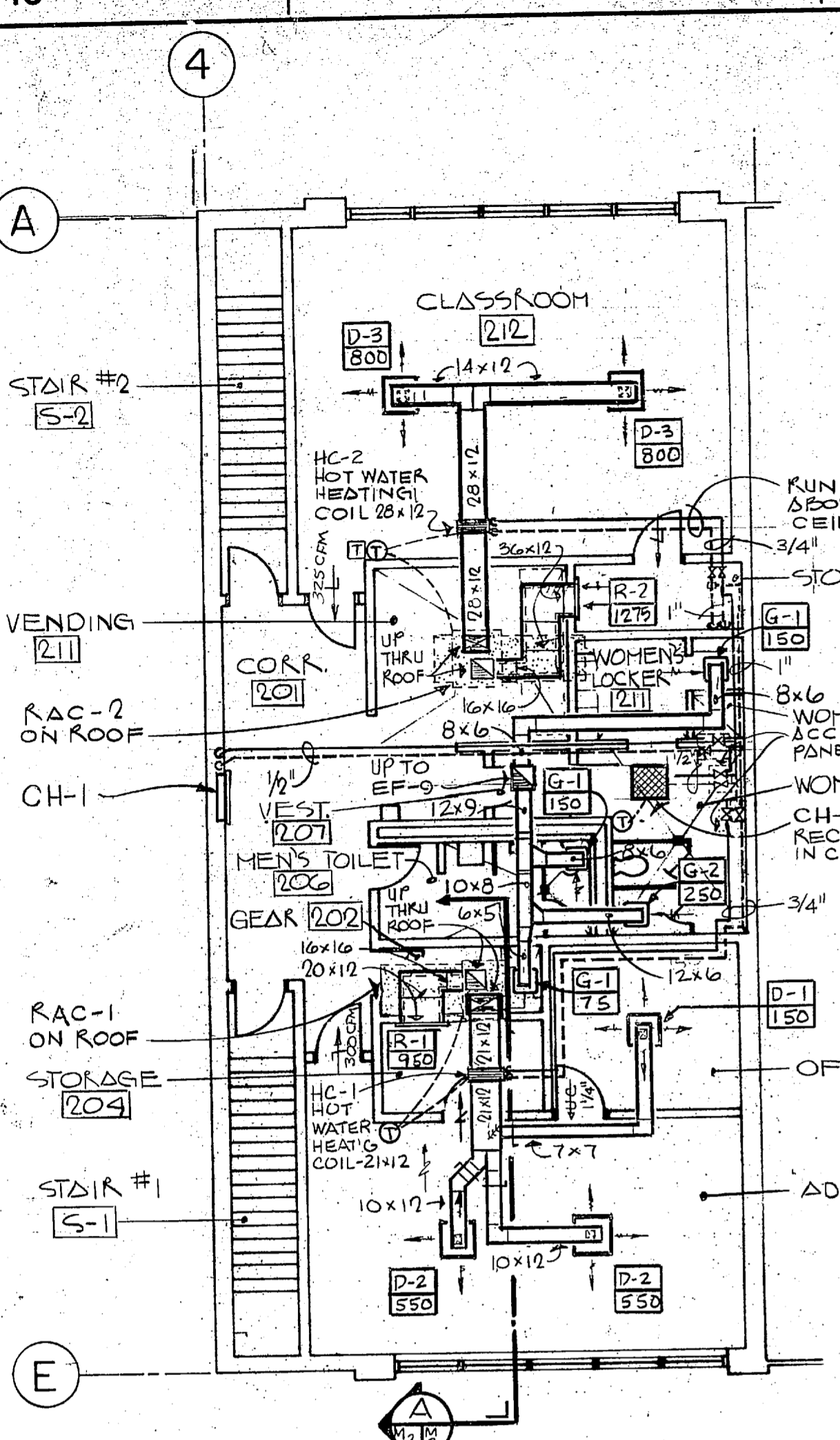
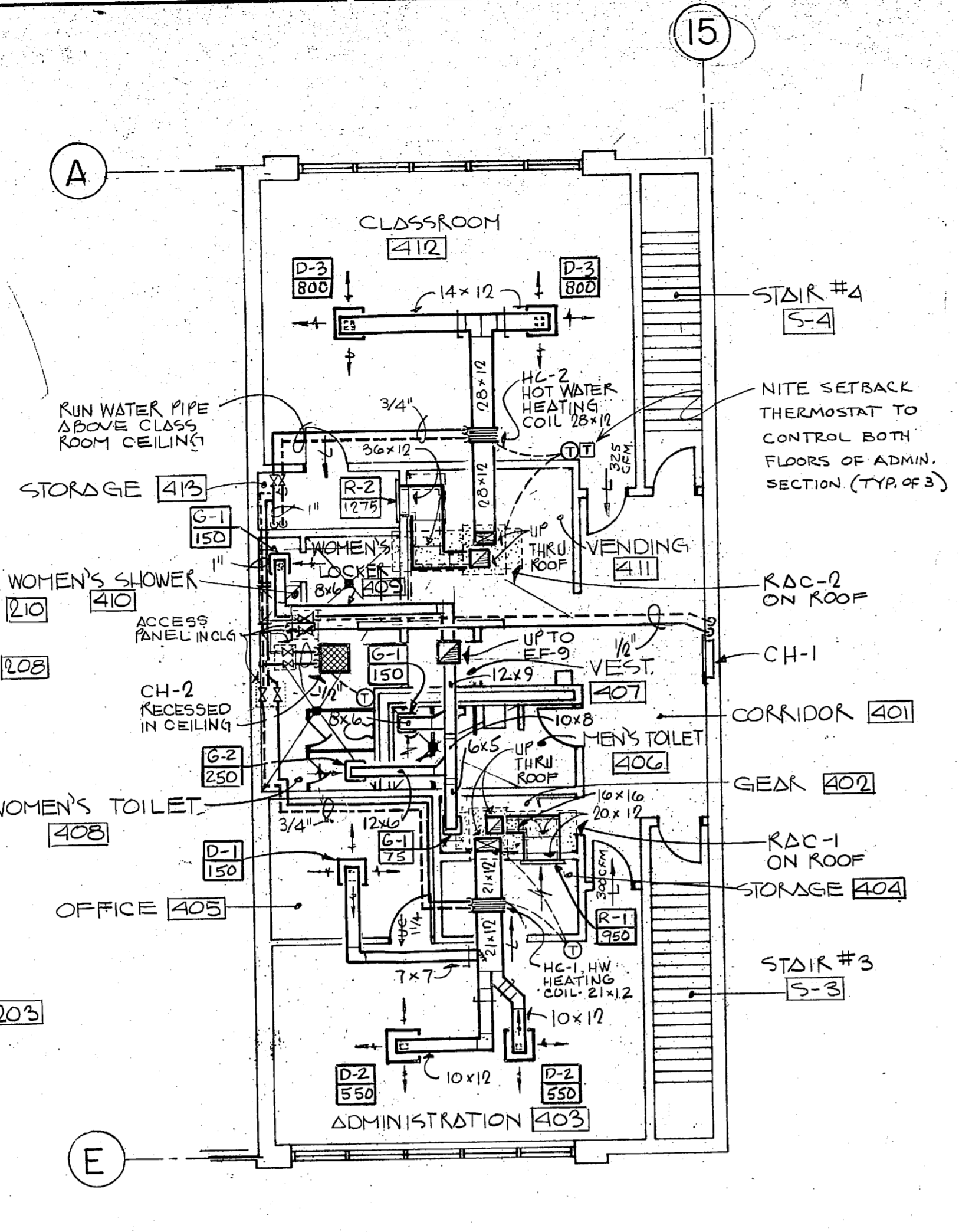


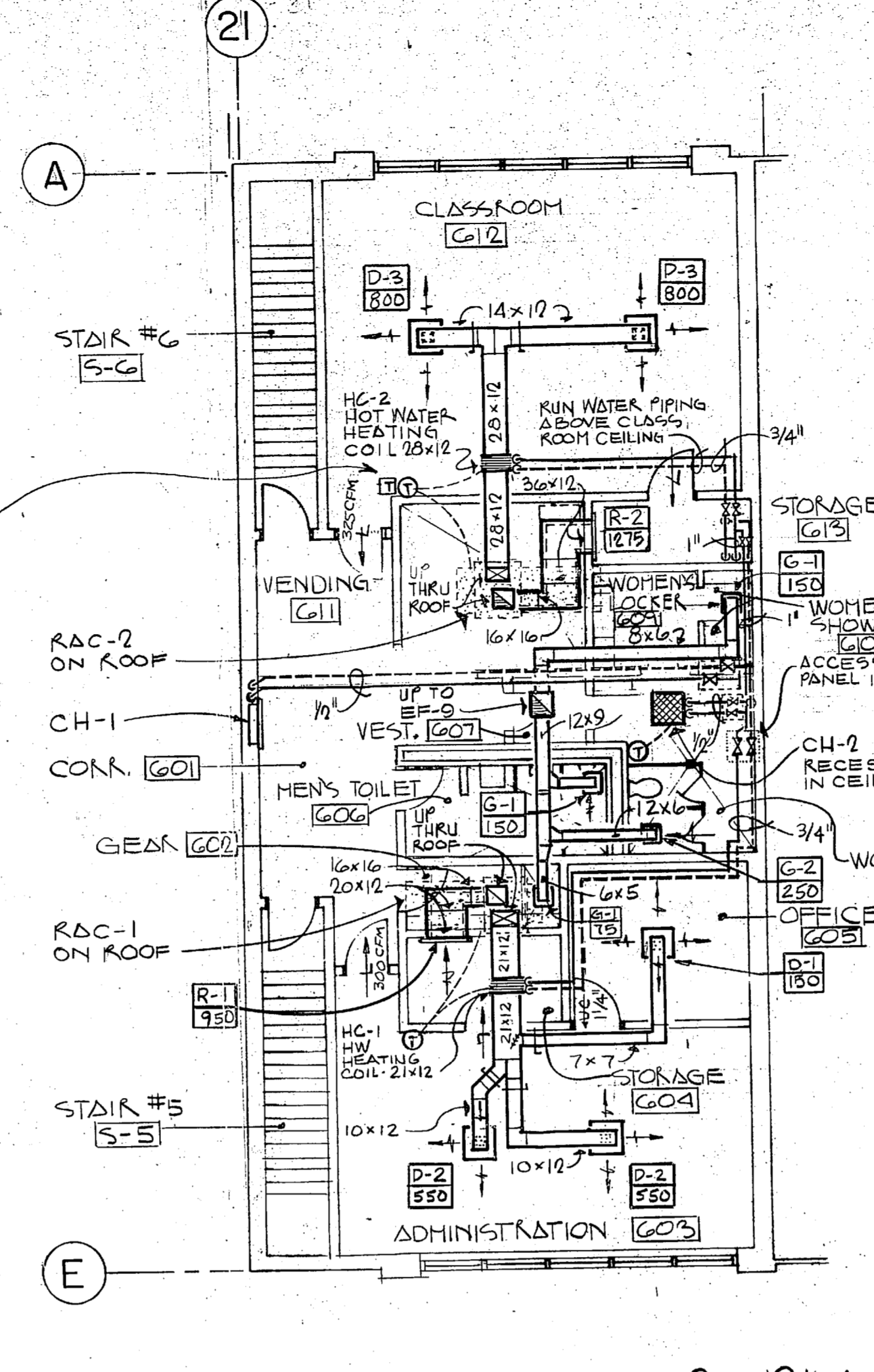
REVISIONS			
STM	DESCRIPTION	DATE	APPROVED



SECOND FLOOR PLAN
SCALE: 1/8"=1'-0"



SECOND FLOOR PLAN
SCALE: 1/8"=1'-0"

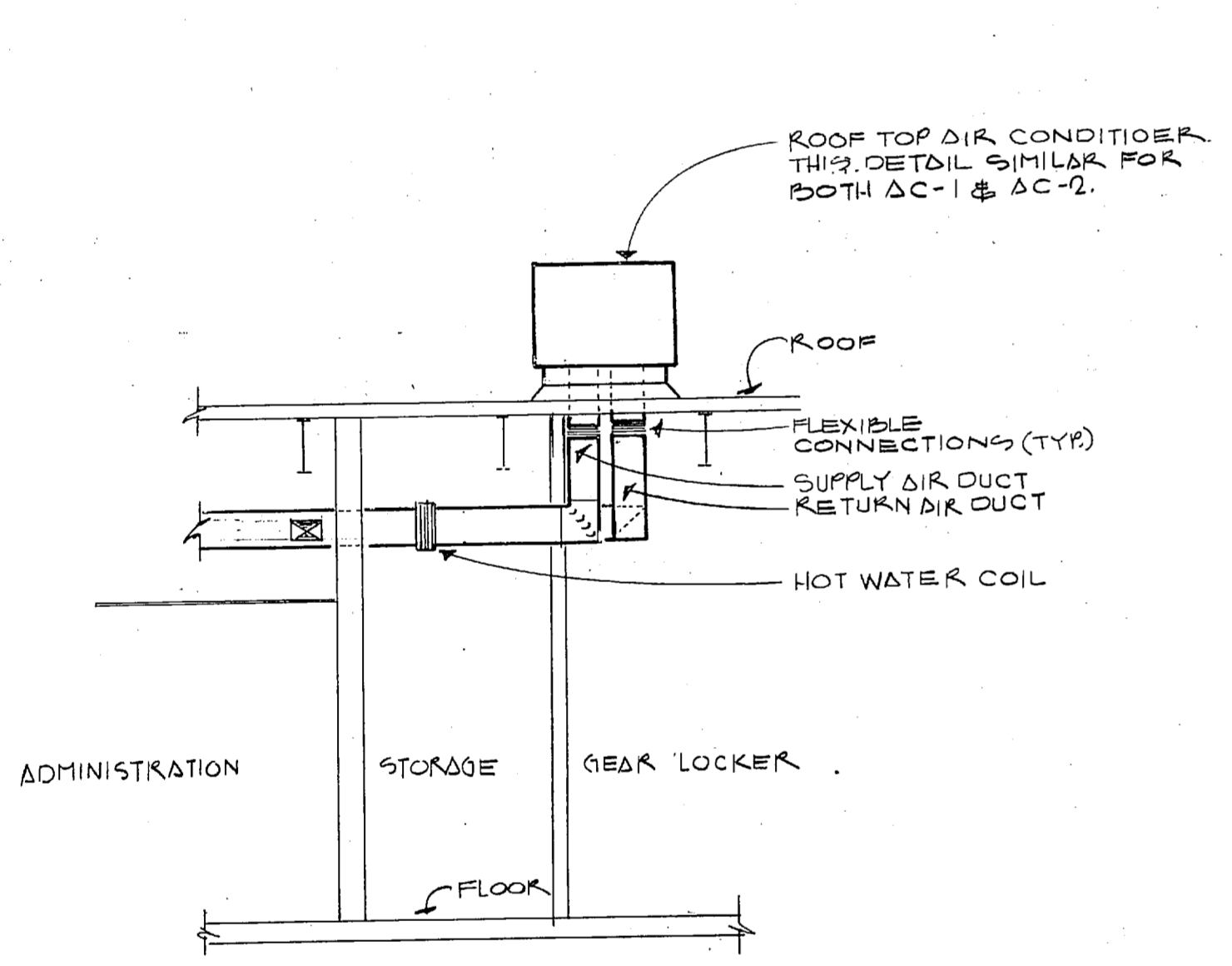


SECOND FLOOR PLAN
SCALE: 1/8"=1'-0"

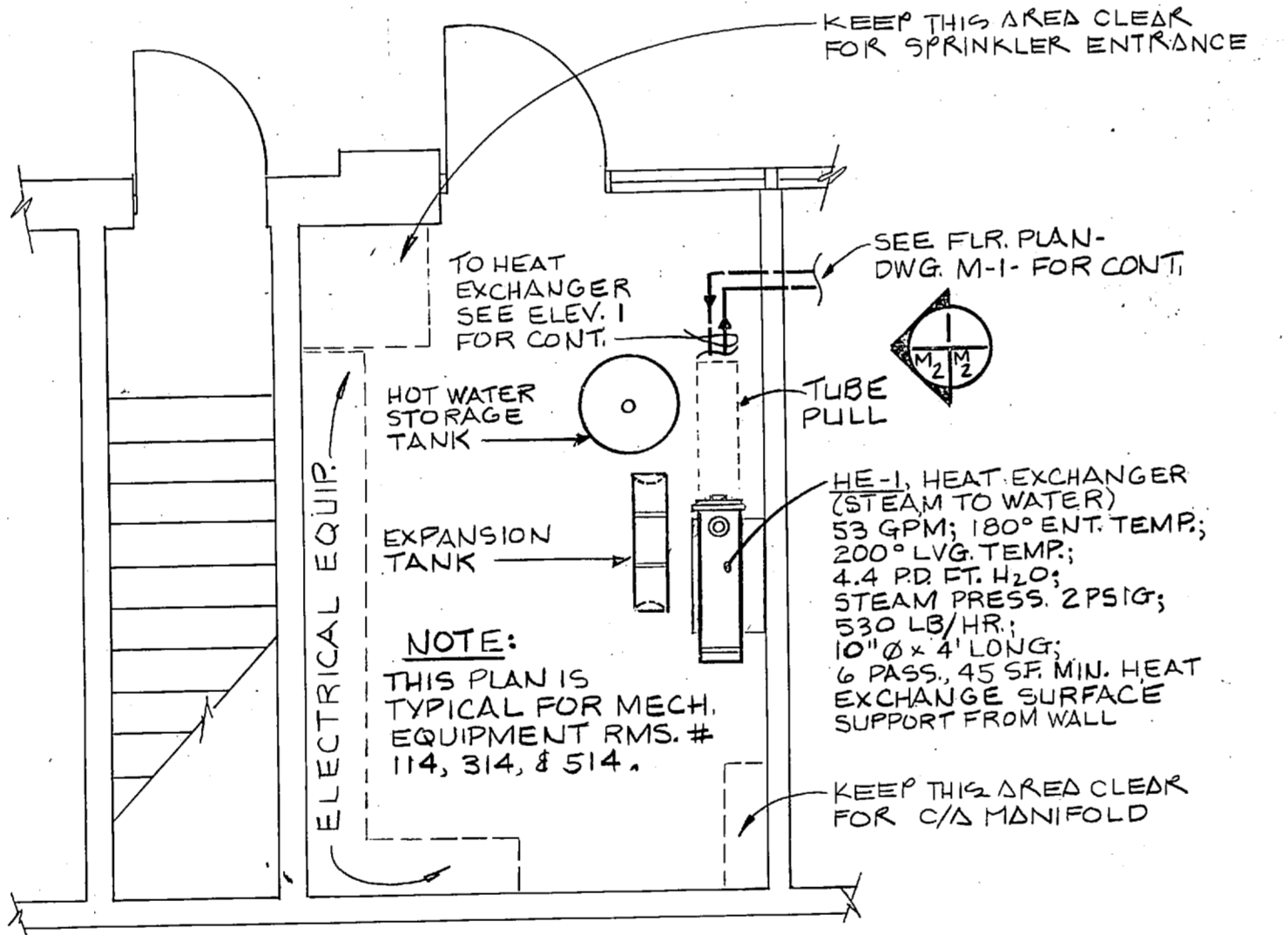
LEGEND

- AC AIR CONDITIONER
- CH CONV.
- EFF. EXHAUST FAN
- FD FIRE DAMPER
- HWR HOT WATER RETURN
- HWS HOT WATER SUPPLY
- RA RETURN AIR
- SA SUPPLY AIR
- UH UNIT HEATER
- DOOR LOUVER
- DOOR UNDERCUT
- DAMP. MOTOR
- VOLUME DAMPER
- DAY THERMOSTAT
- NIGHT THERMOSTAT
- DUCT WITH LINING - SEE SPECS.
- GATE VALVE
- GLOBE VALVE
- CONTROL VALVE
- STRAINER
- CHECK VALVE
- STEAM TRAP
- BALANCING, INDICATING, STOP VALVE
- PRESSURE REDUCING VALVE
- UNION
- MANUAL AIR VENT
- PRESSURE GAUGE
- THERMOMETER
- LPS LOW PRESSURE STEAM
- HPS HIGH PRESSURE STEAM
- MPS MEDIUM PRESSURE STEAM
- LPC LOW PRESSURE CONDENSATE
- HPC HIGH PRESSURE CONDENSATE
- CW COLD WATER

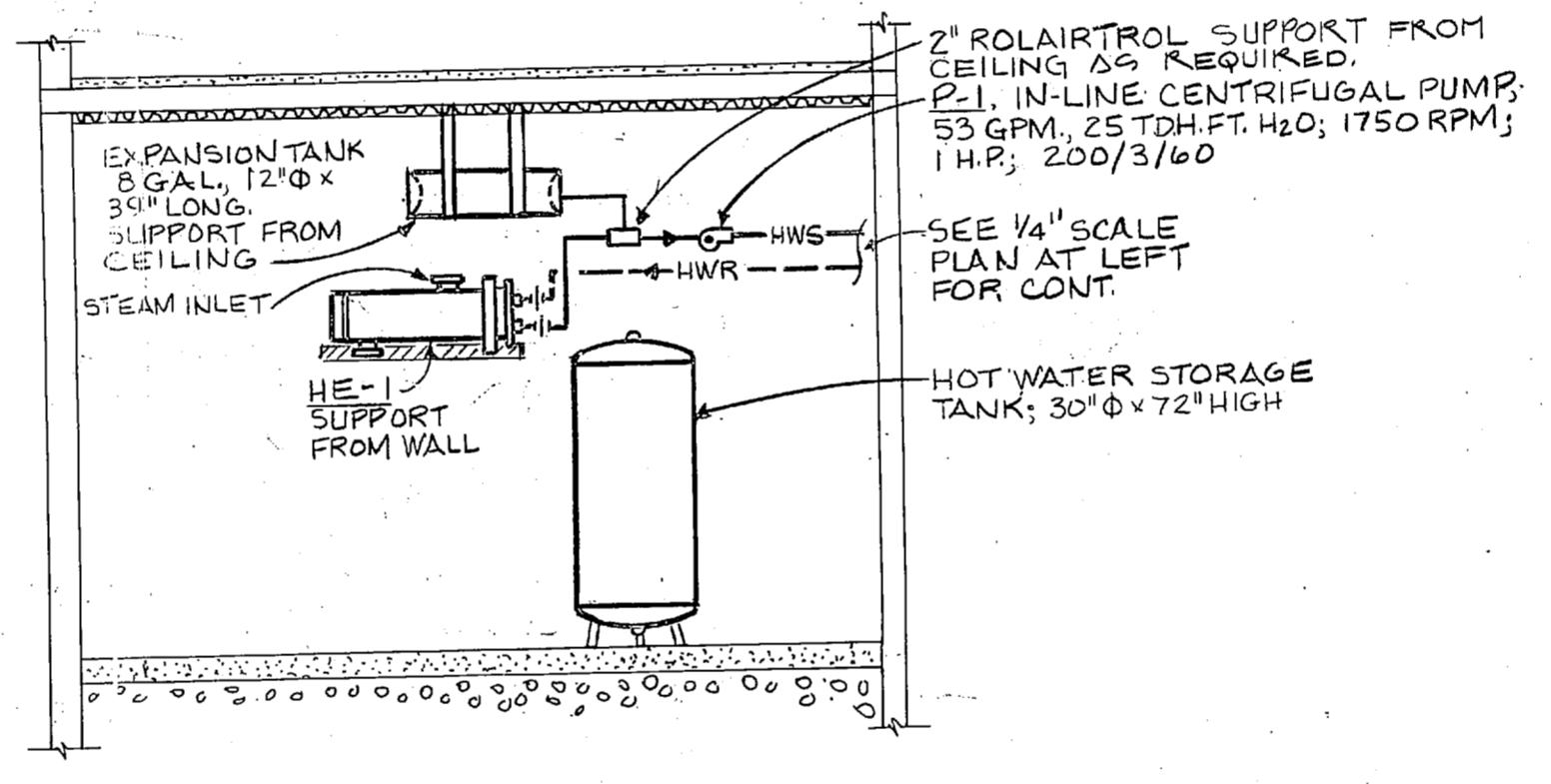
NOTE:
1. ALL DIMENSIONS SHOWN ON DUCT WORK WITH LINING ARE TO BE CLEAR, INSIDE DIMENSIONS



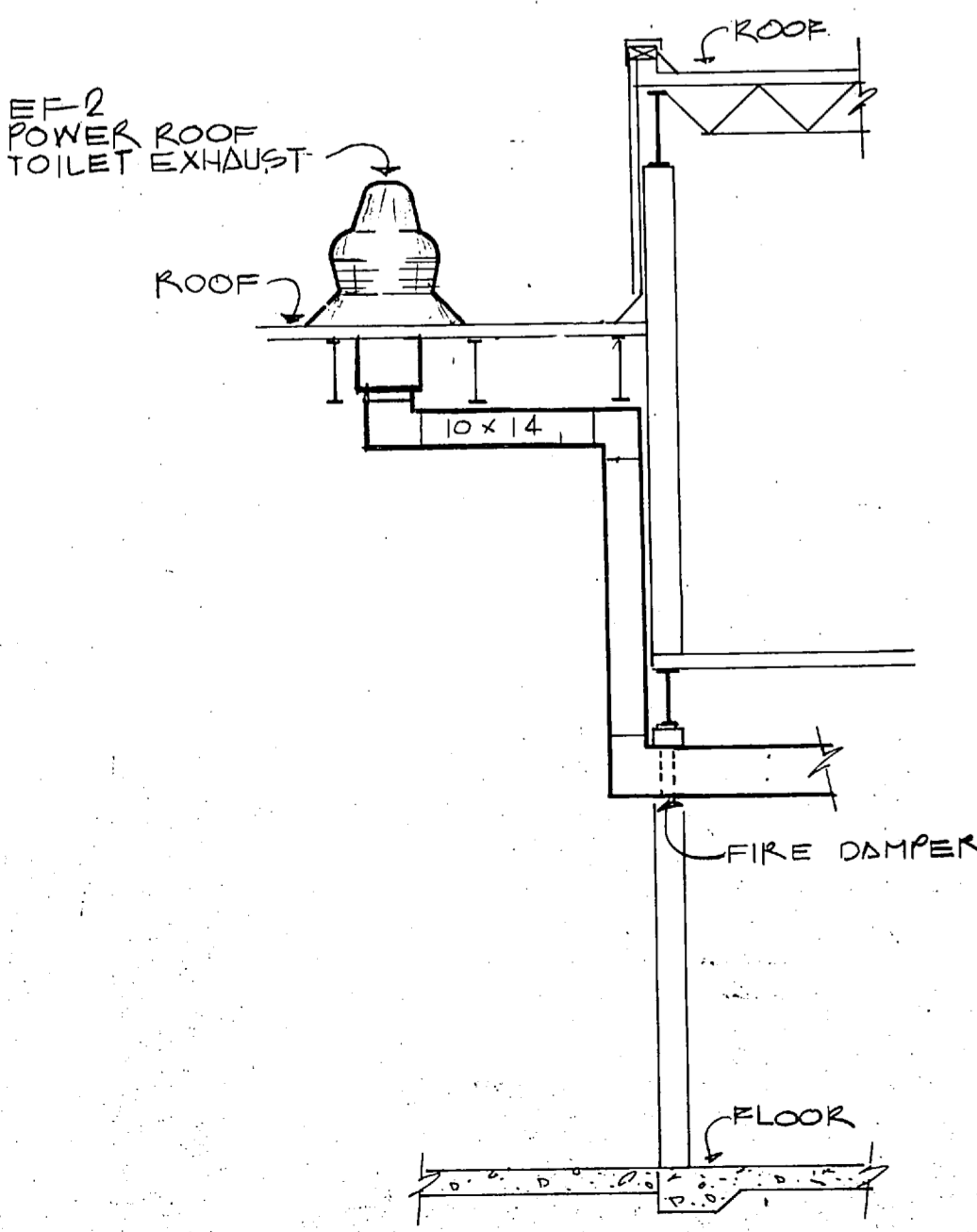
SECTION A-A
SCALE: 1/4"=1'-0"



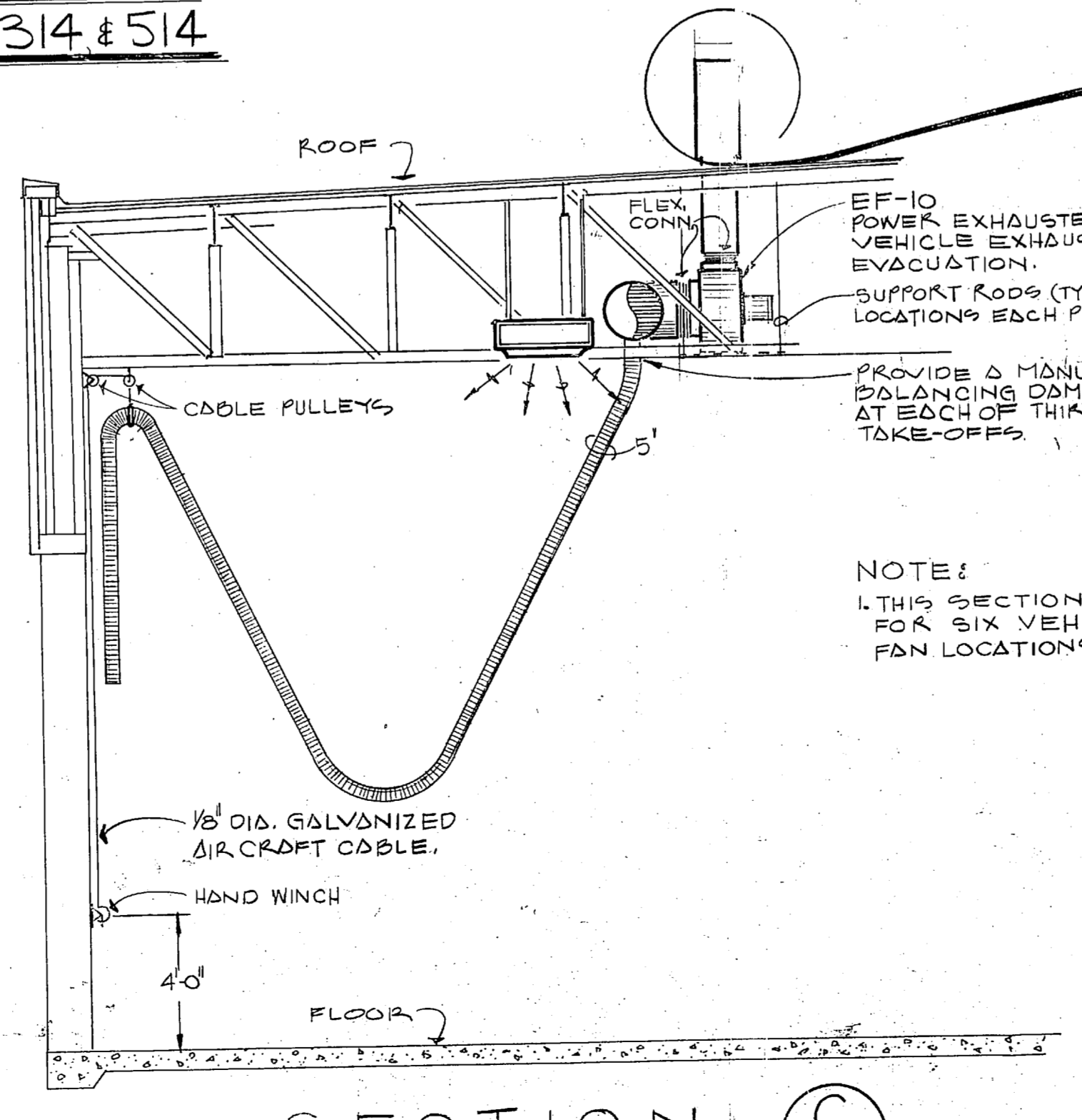
MECHANICAL ROOM TYP. RMS. 114, 314 & 514
SCALE: 1/4"=1'-0"



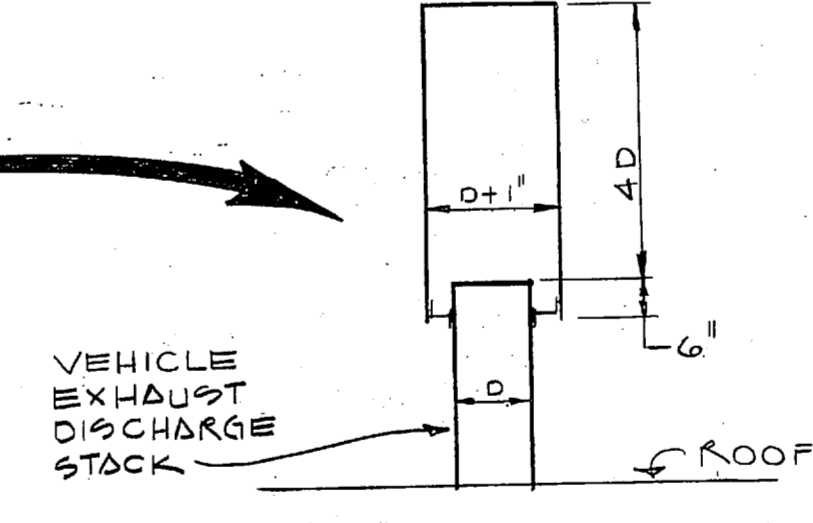
ELEVATION
SCALE: 1/4"=1'-0"



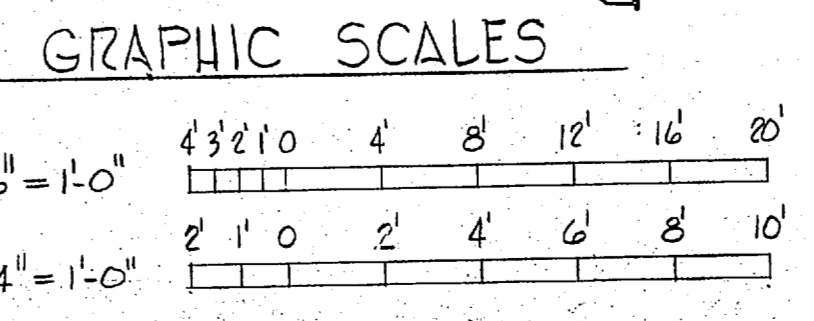
SECTION B-B
SCALE: 1/4"=1'-0"



SECTION C-C
SCALE: 1/4"=1'-0"

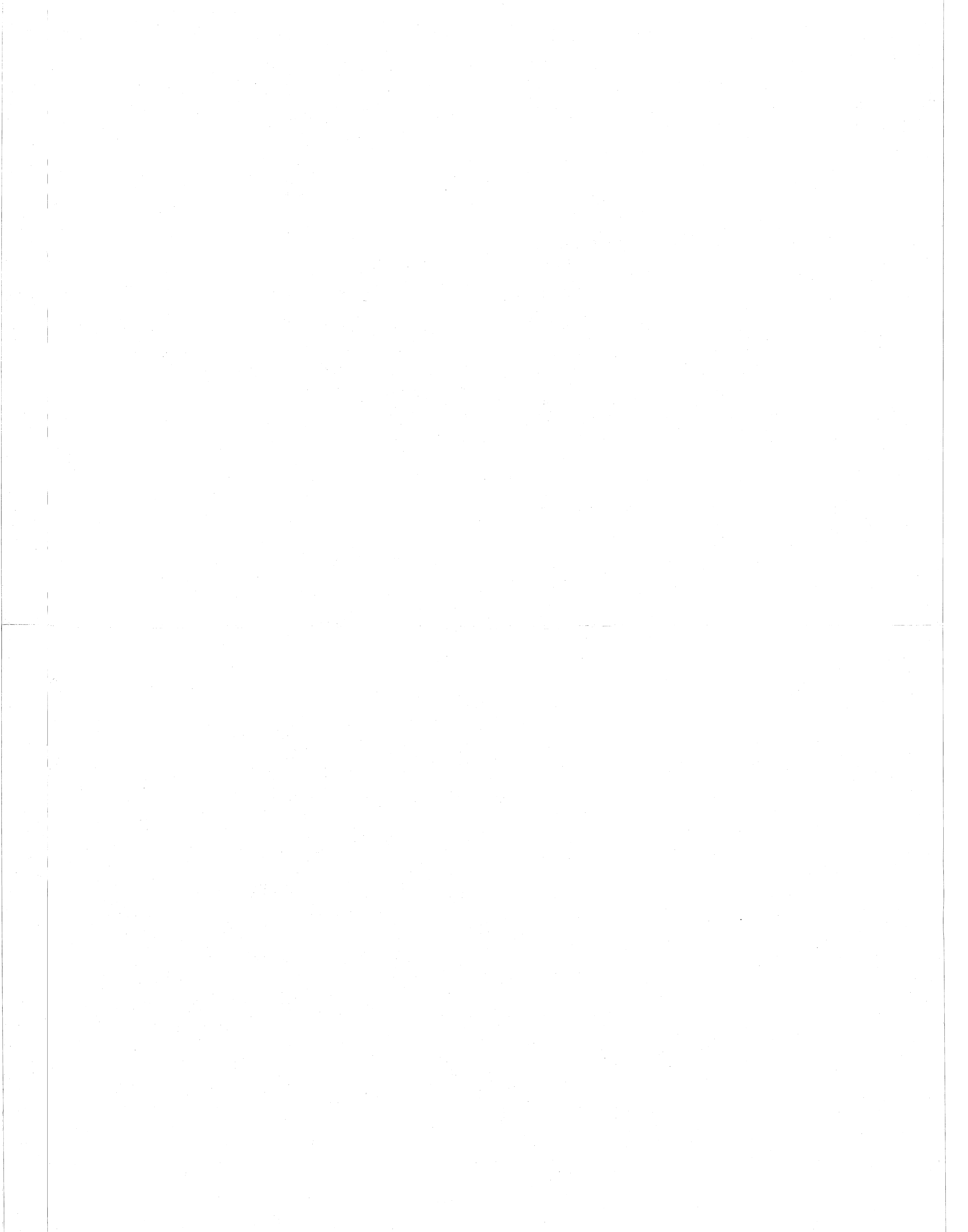


EF-10 POWER EXHAUSTER FOR VEHICLE EXHAUST EVACUATION.
SUPPORT ROOFS (TYPE 4 LOCATIONS EACH PLATFORM)
PROVIDE A MANUAL BALANCING DAMPER AT EACH OF THIRTY (30) TAKE-OFFS.
NOTE:
1. THIS SECTION IS TYPICAL FOR SIX VEHICLE EXHAUST FAN LOCATIONS.

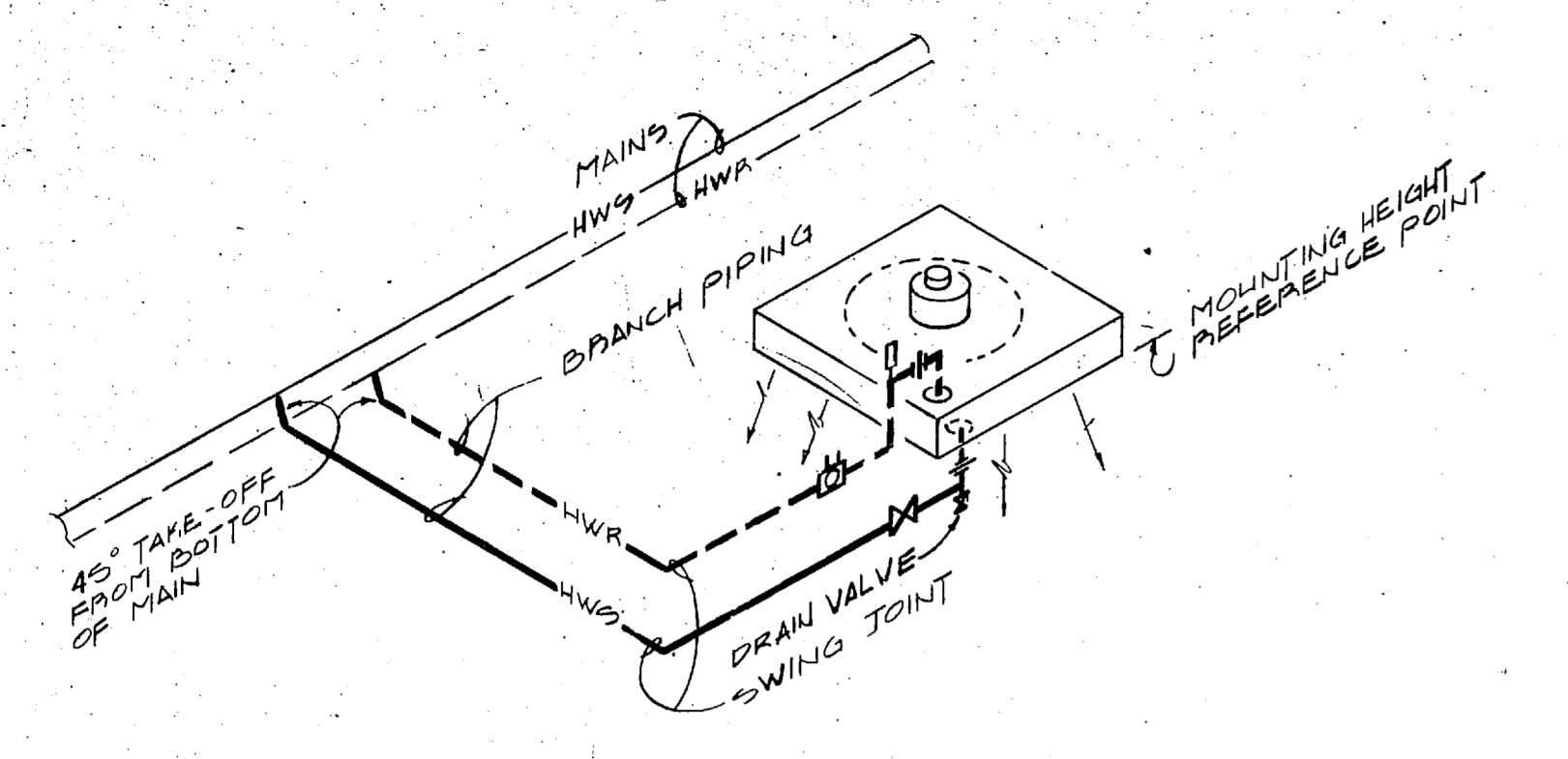


1775

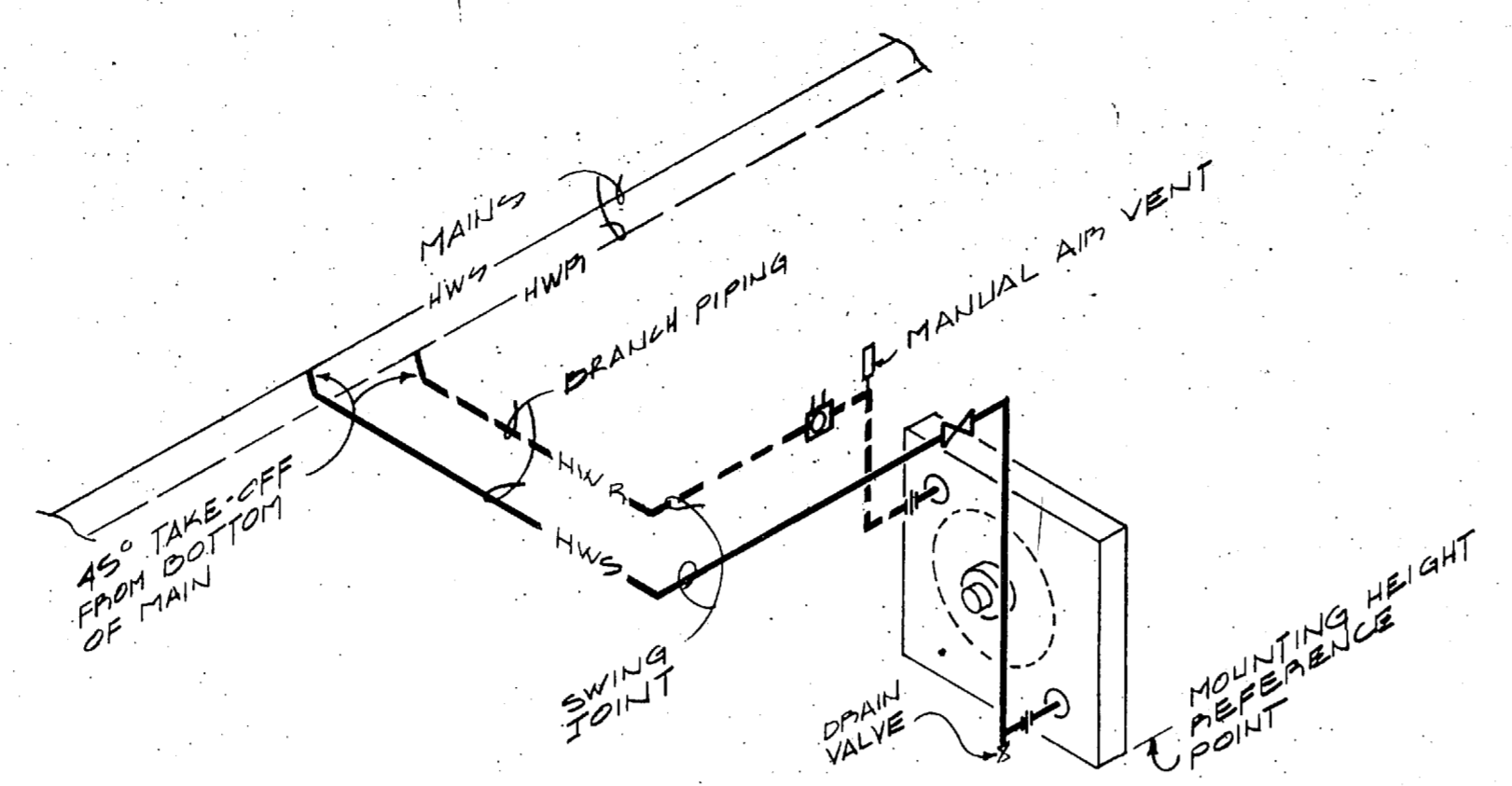
RECORD DRAWING		M-2	
LETTER DATED 5 JANUARY 1981		NAVAL FACILITIES ENGINEERING COMMAND	
STETSON ARCHITECTS & ENGINEERS GREENVILLE, S.C.		DEPARTMENT OF THE NAVY ATLANTIC DIVISION NAVAL STATION NORFOLK, VIRGINIA	
PROJECT MGR. CH. ENGR.		MCB CAMP LEJEUNE, N.C.	
SUBMITTED BY DATE: 9-20-77 FOR REVIEW PRINCIPAL		AUTOMOTIVE VEHICLE SHOP	
EFD: 201186 BYD: 201186 HD: 11/20/77 DIR: 201186		SECOND FL. PLAN & DETAILS	
APPROVED: DATE: 12/18/77 OFFICER IN CHARGE		SIZE: CODE IDENT. NO. NAVFAC DRAWING NO. 4035391	
FOR EFD FOR COMMANDER NAVFAC		F 80091 CONSTR. CONTR. NO. 62470-76-B-622	
		SCALE(S) SHOWN: SPEC. 05-76-6225 SHEET 35 OF 45	



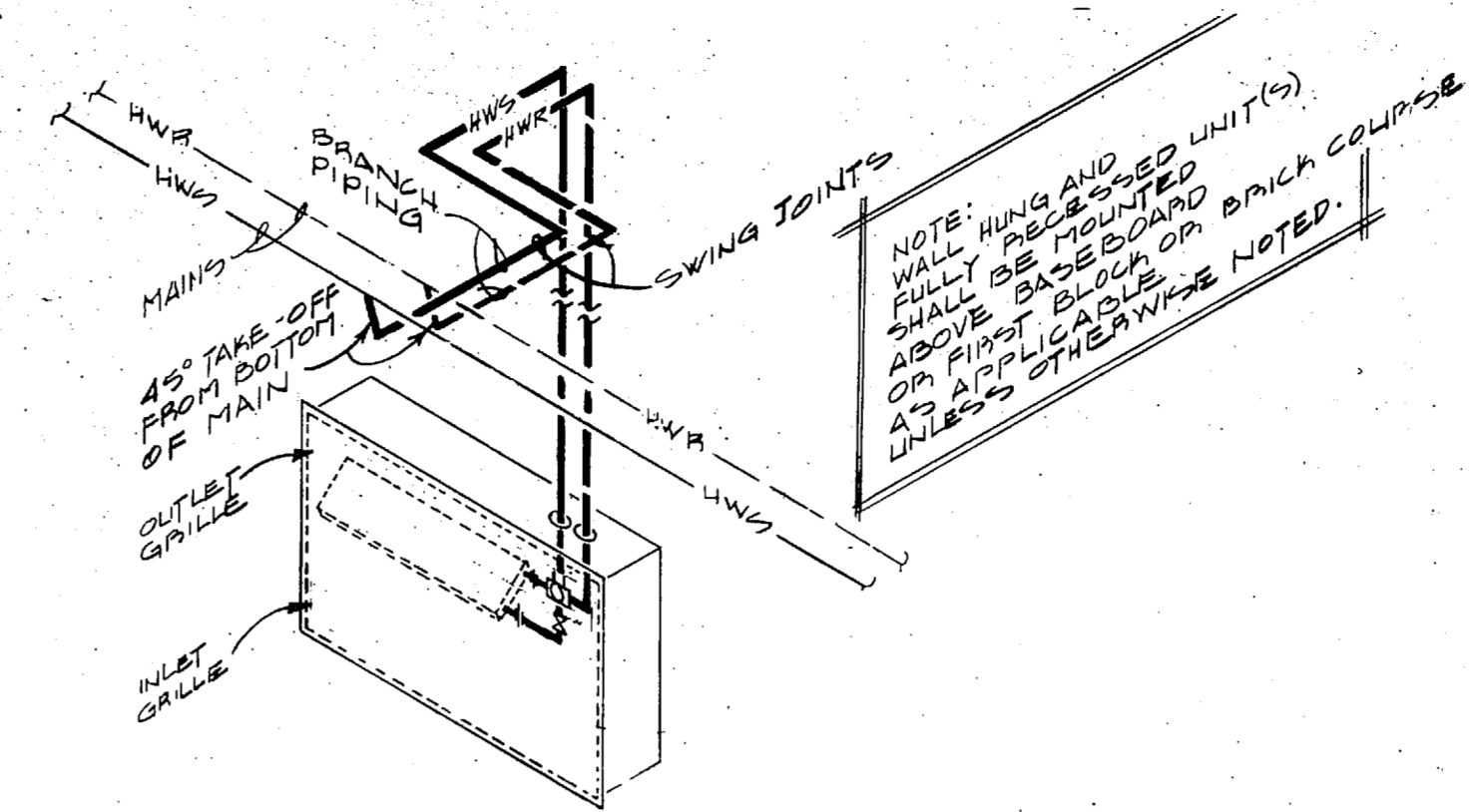
REVISIONS			
STM	DESCRIPTION	DATE	APPROVED



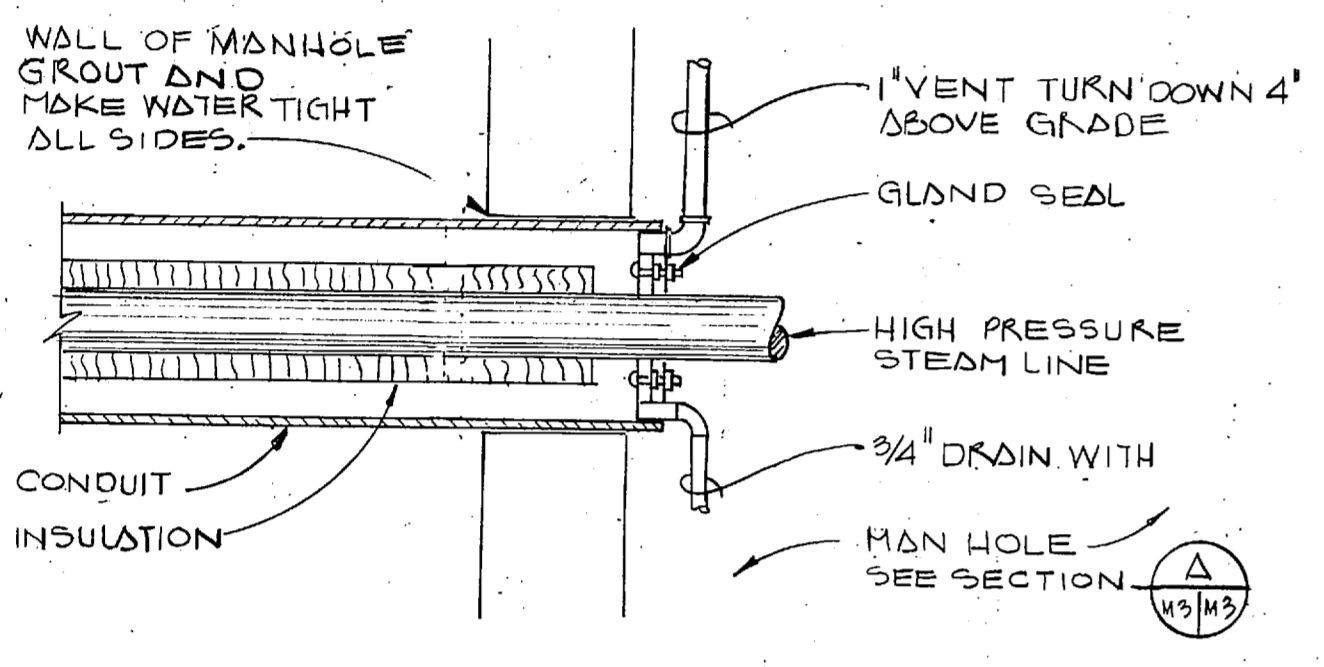
PIPING CONNECTIONS @ VERTICAL UNIT HEATER(S)



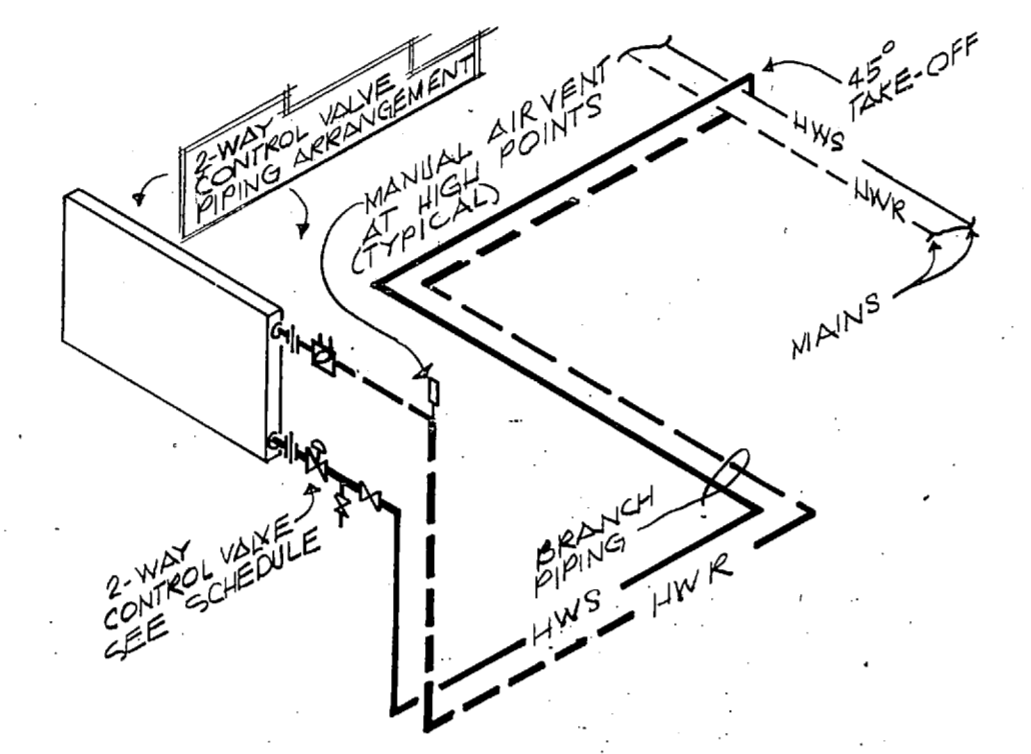
PIPING CONNECTIONS @ HORIZONTAL UNIT HEATER



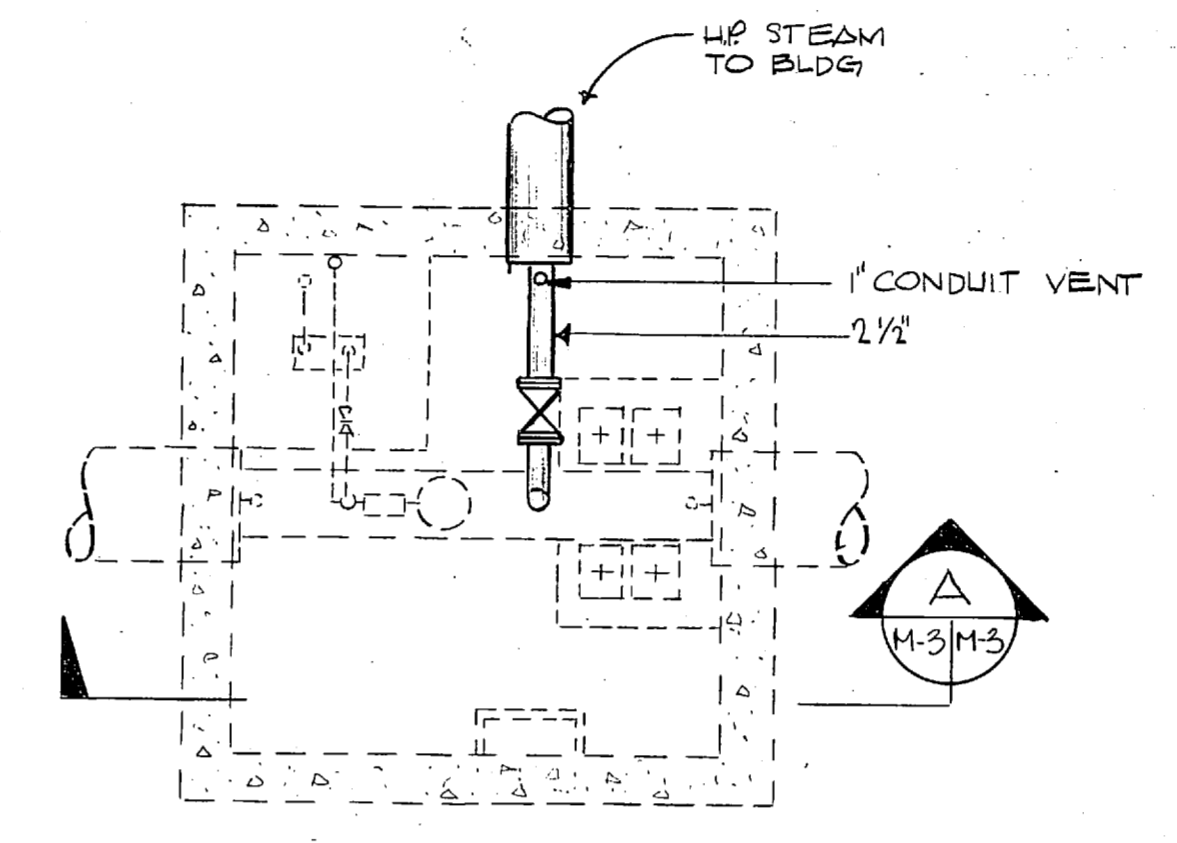
PIPING CONNECTIONS @ CABINET HEATER(S)



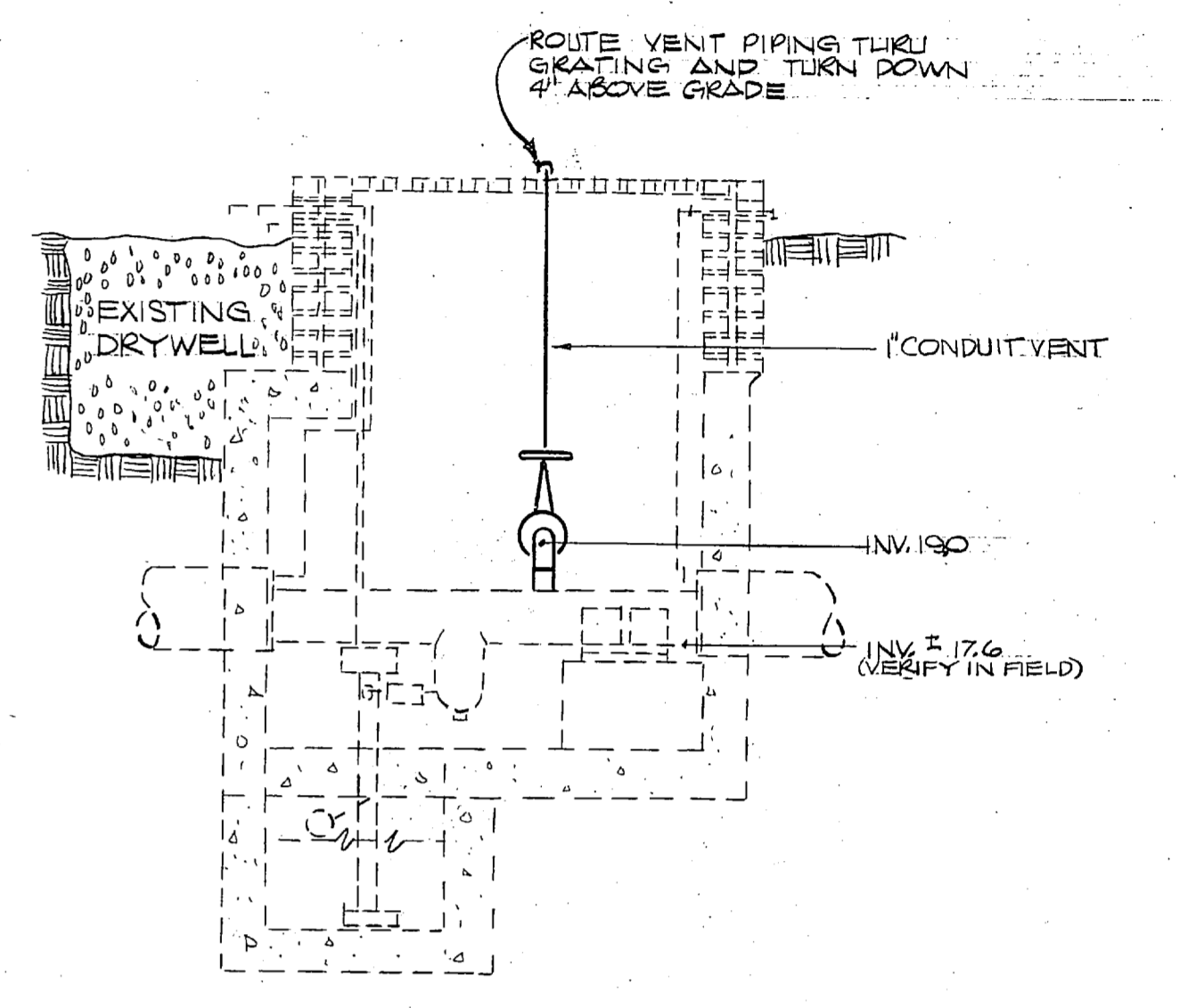
TYPICAL CONDUIT DETAIL



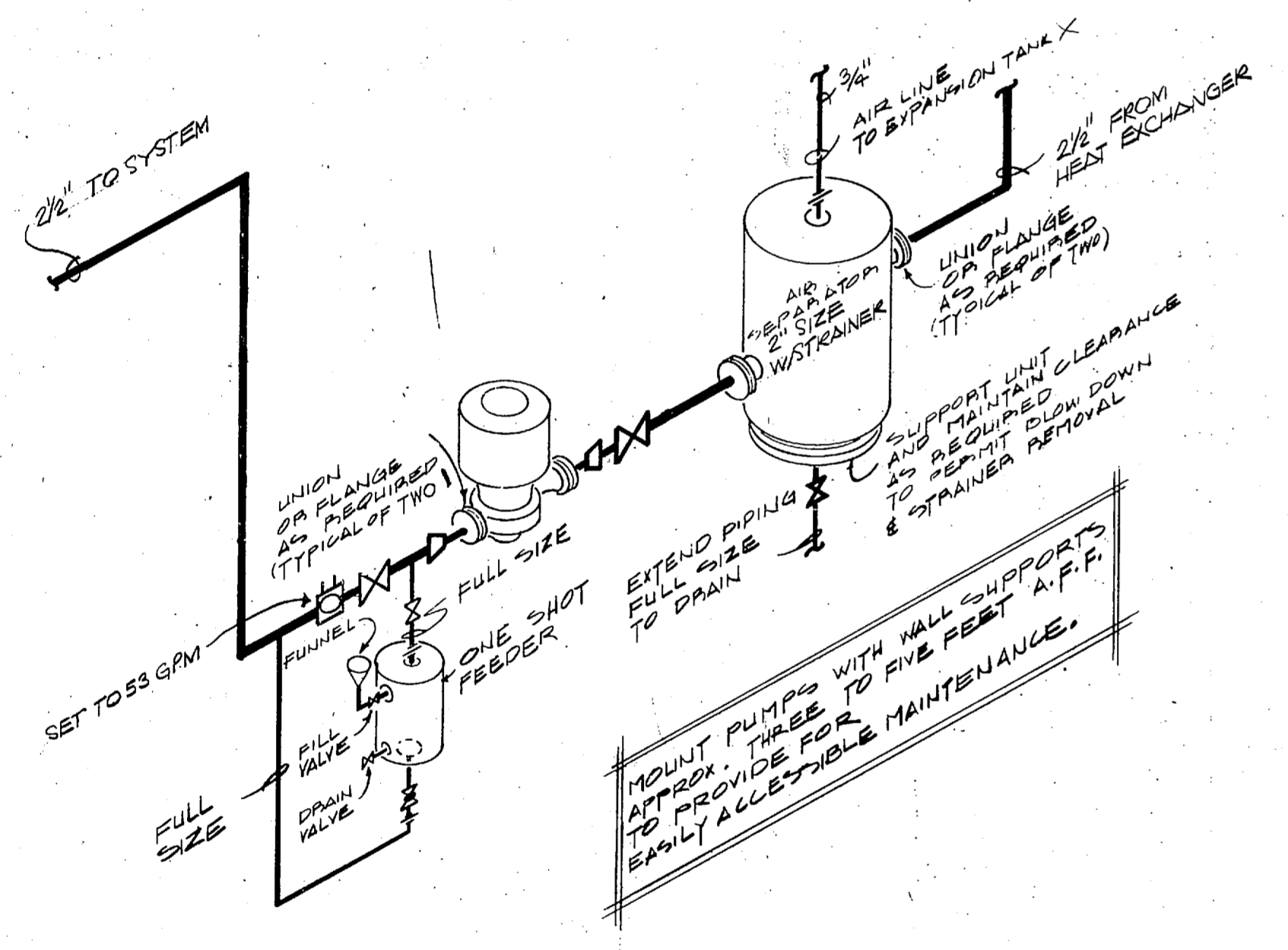
PIPING CONNECTIONS @ HOT WATER COIL



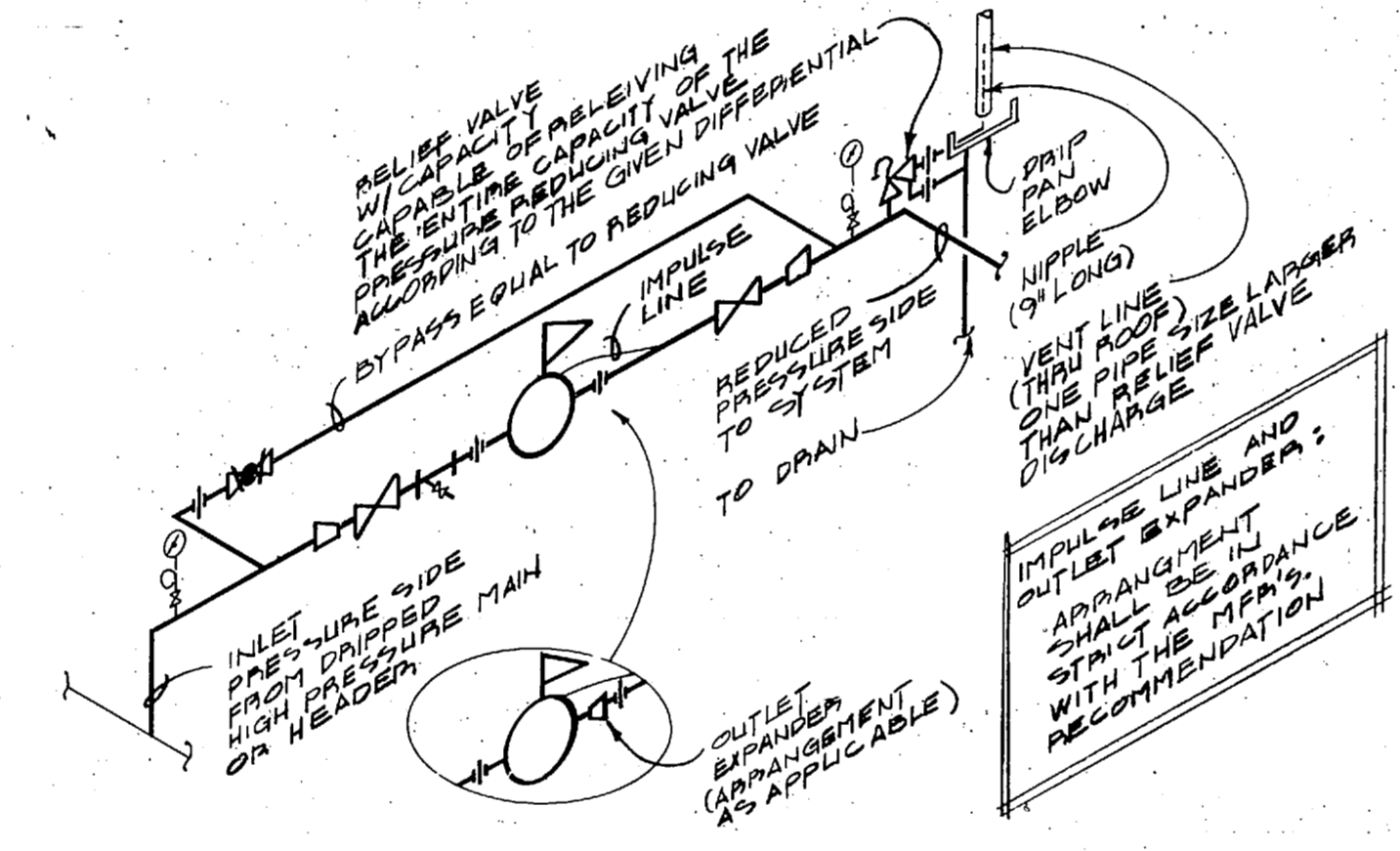
PIPING CONNECTIONS @ EXISTING MANHOLE - PLAN



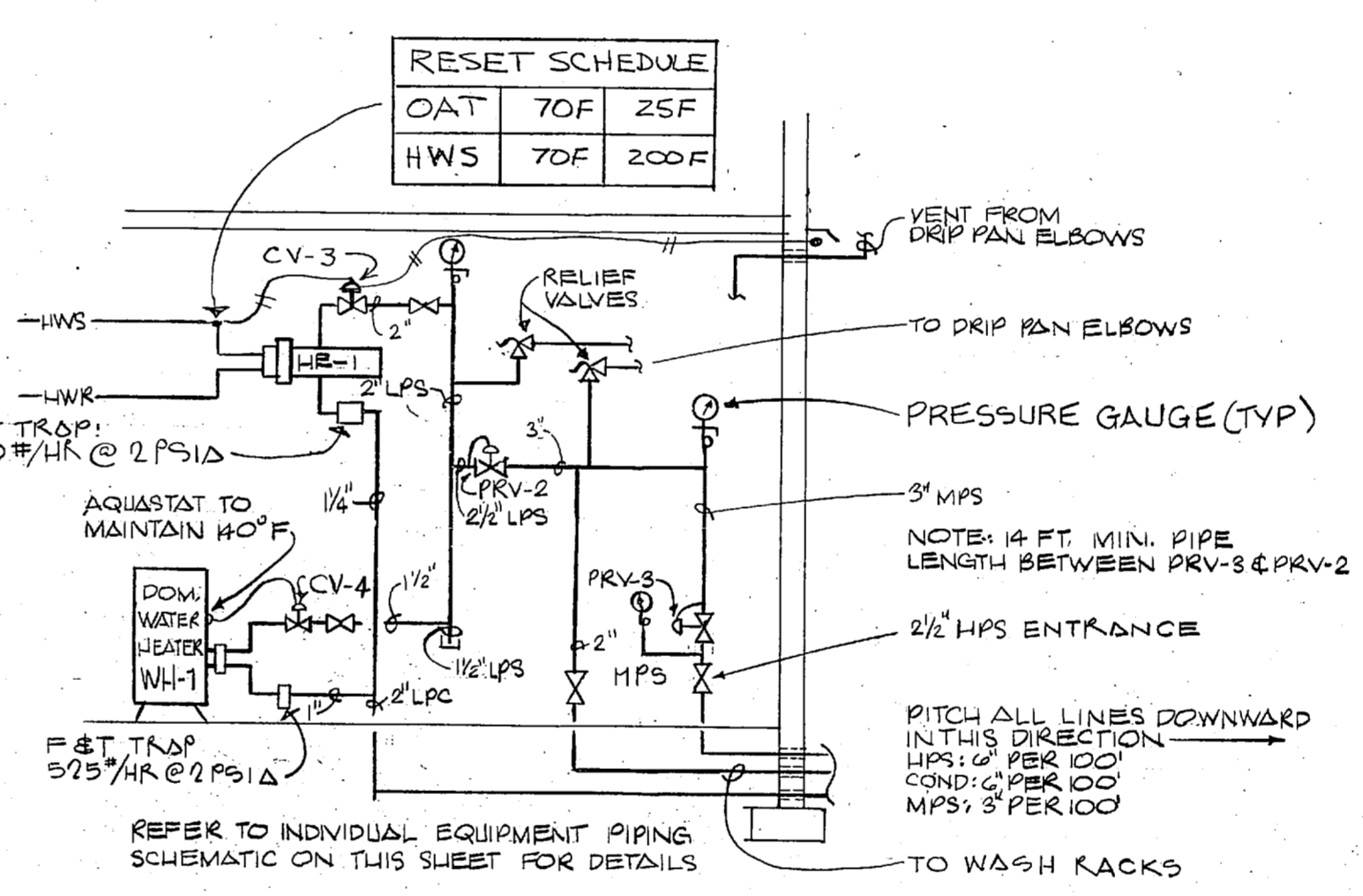
SECTION A



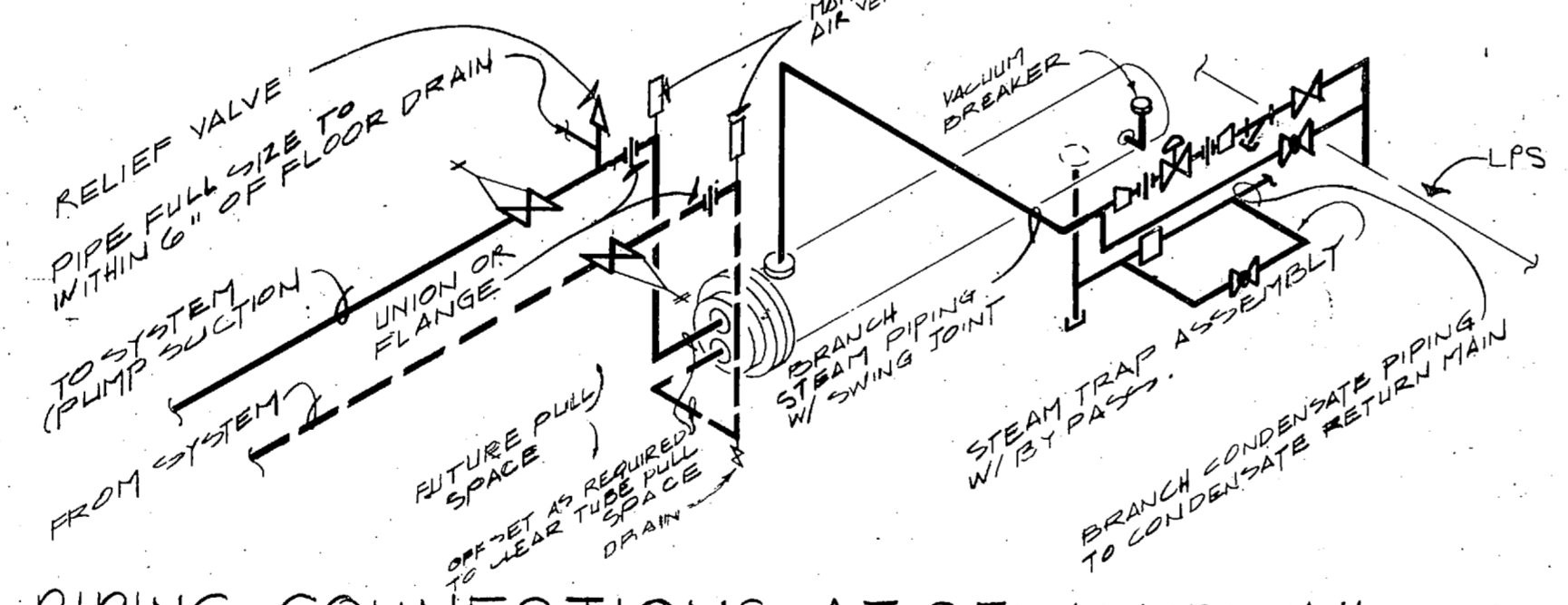
PIPING CONNECTIONS @ PRIMARY HOT WATER CIRCULATION PUMPS



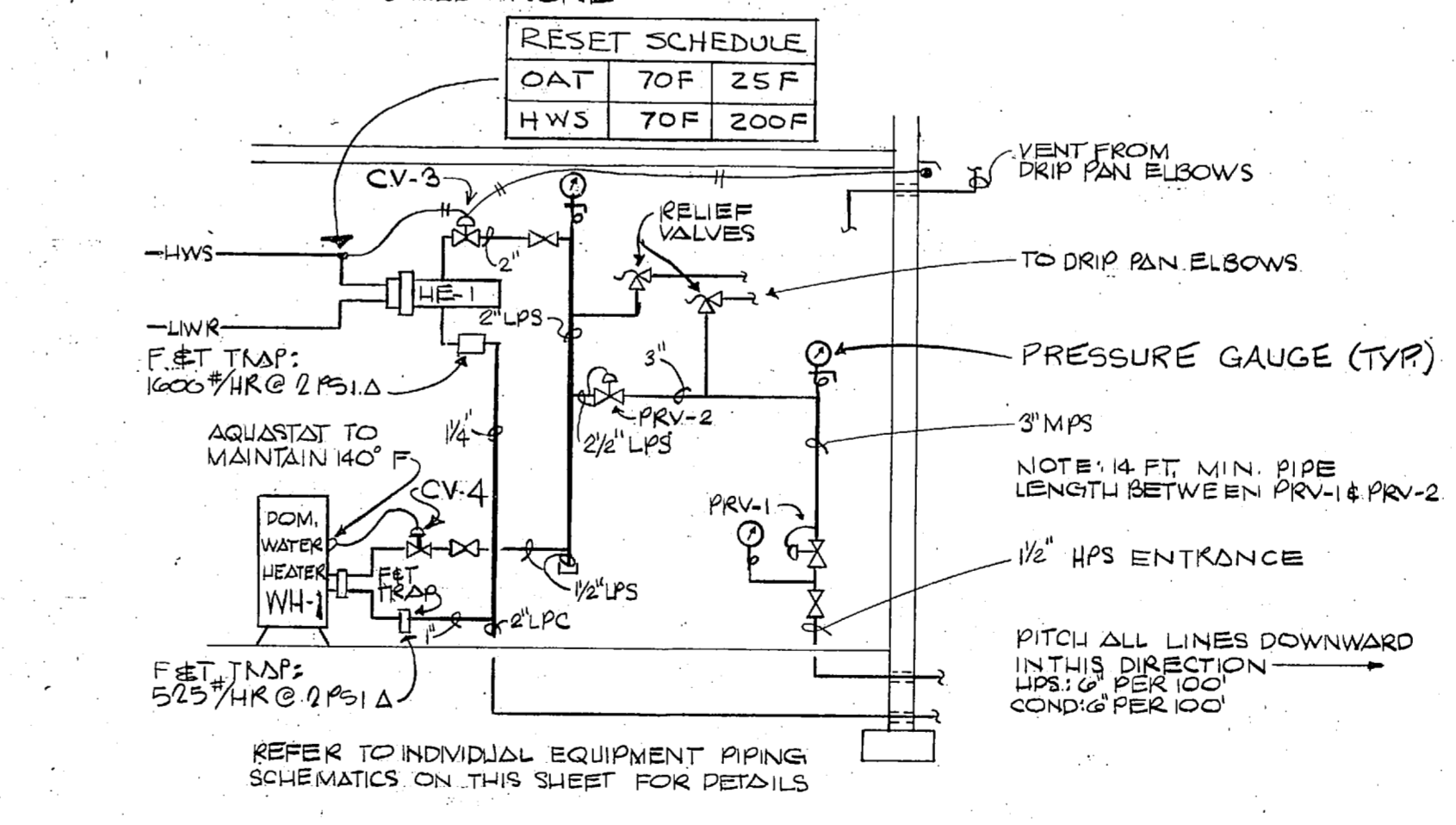
PRESSURE REDUCING VALVE STATION



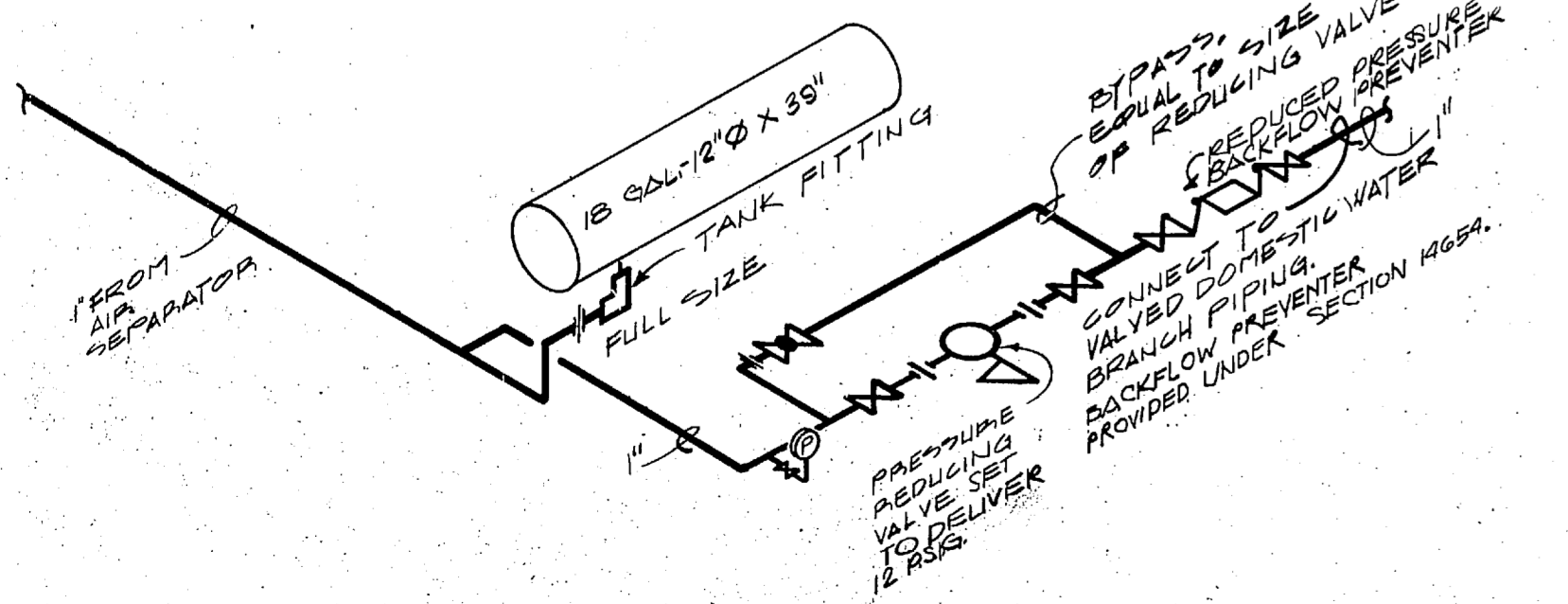
STEAM PIPING - ROOM 514



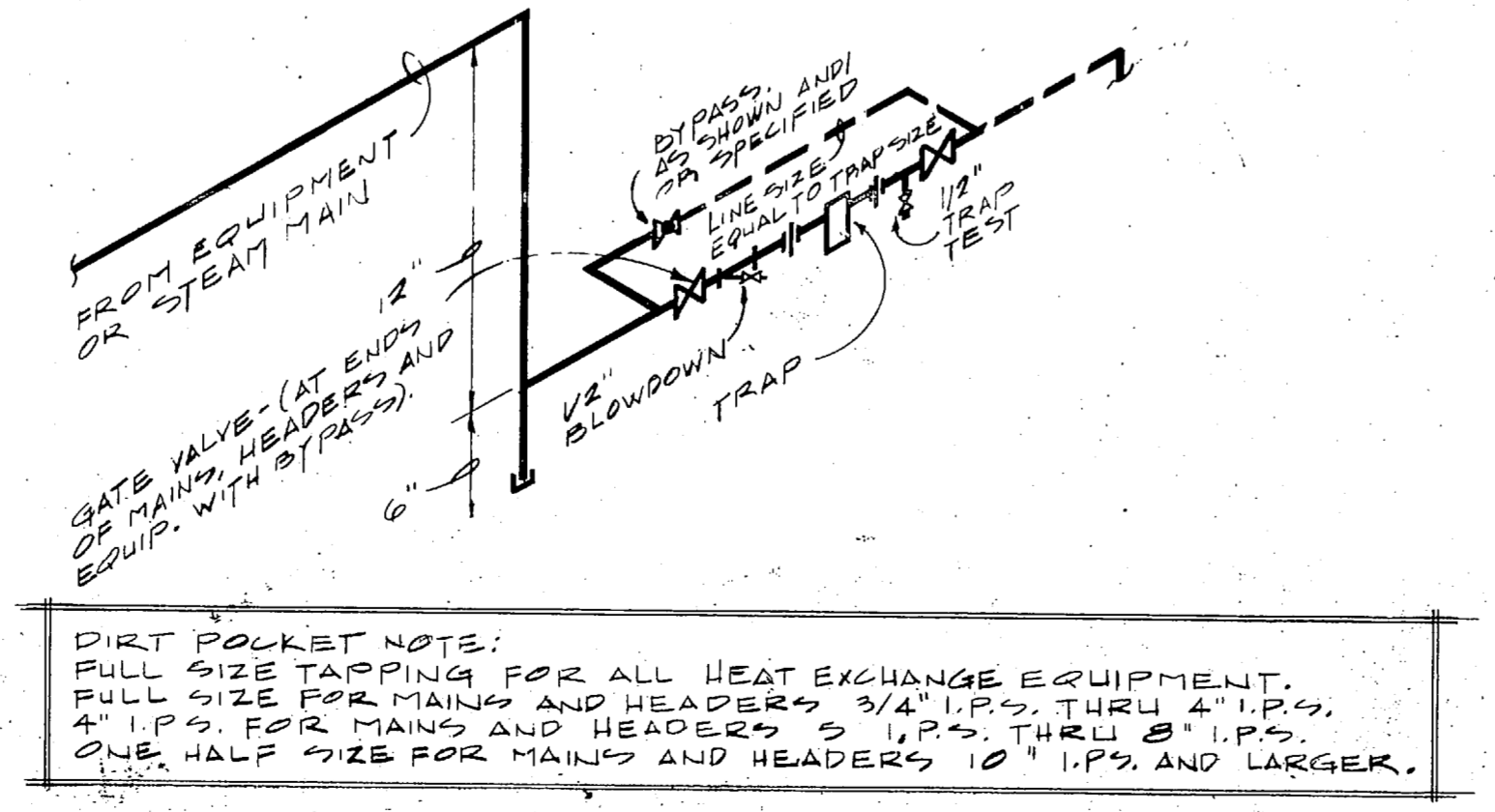
PIPING CONNECTIONS AT STEAM TO WATER HEAT EXCHANGER



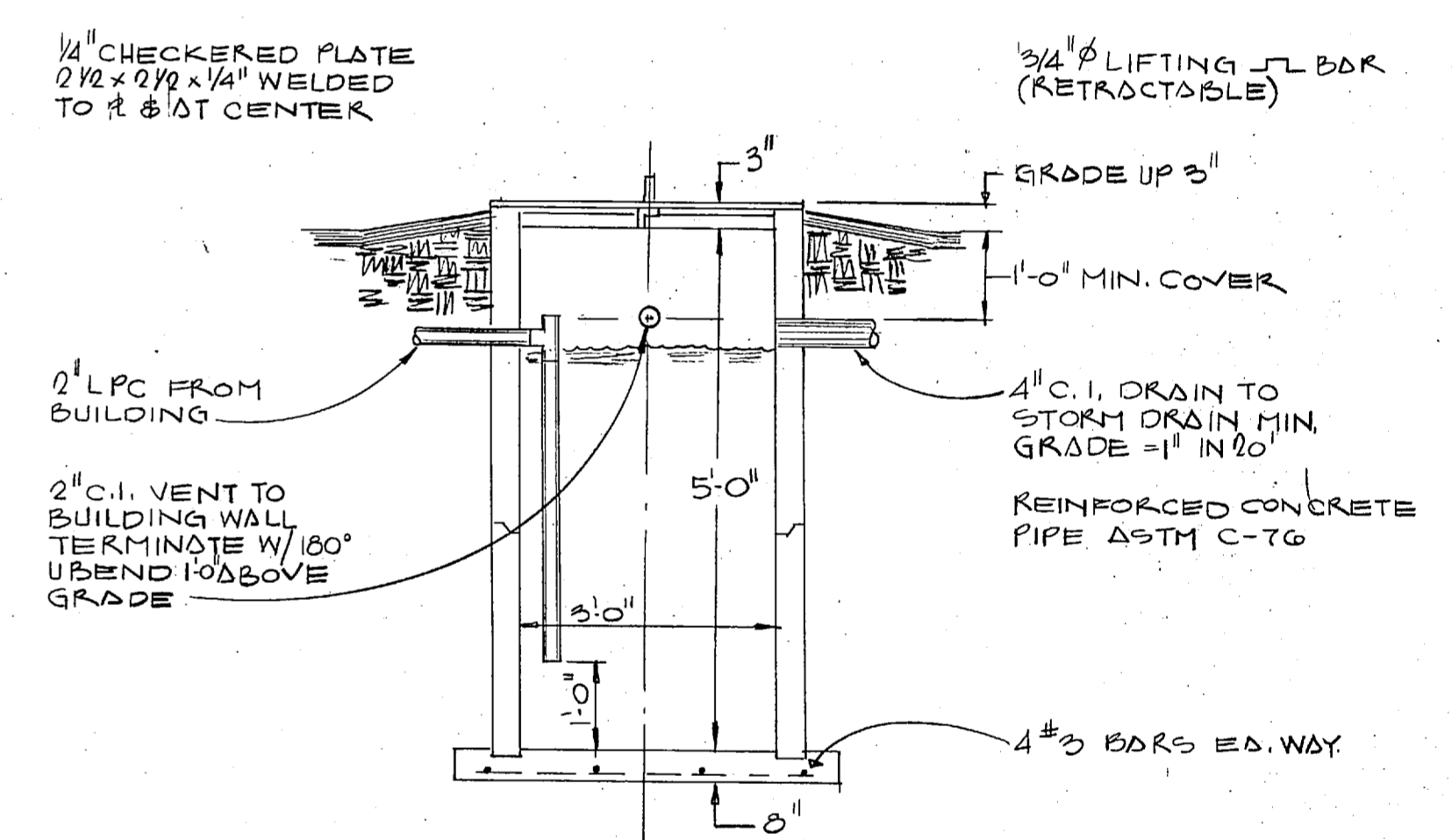
STEAM PIPING - ROOMS 114 & 314



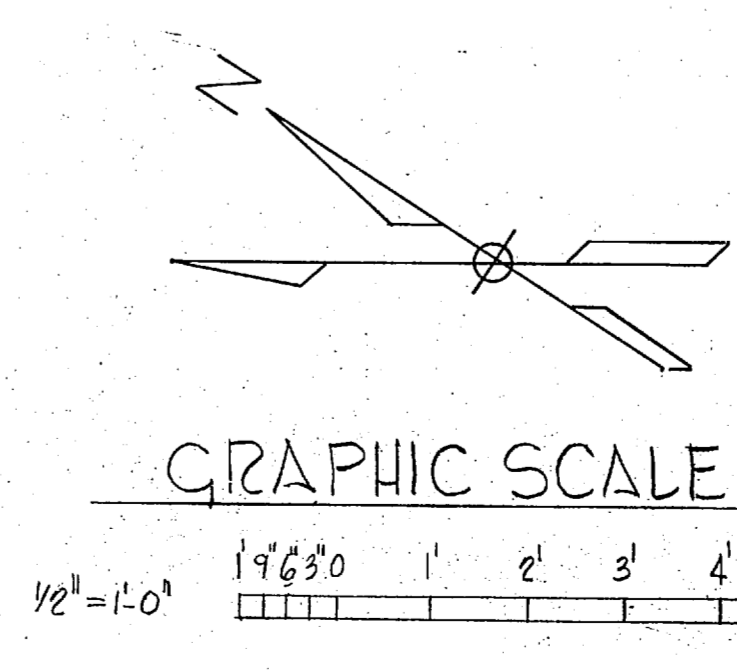
PIPING CONNECTIONS @ EXPANSION TANK



PIPING CONNECTIONS @ STEAM TRAPS



CONDENSATE COOLING WELL



GRAPHIC SCALE

1175

RECORD DRAWING		M-3	
LETTER DATED 5 JANUARY 1981		DEPARTMENT OF THE NAVY NAVAL FACILITIES ENGINEERING COMMAND	
STETSON ARCHITECTS & ENGINEERS GREENVILLE, S.C.		NAVAL STATION NORFOLK, VIRGINIA	
DES. DR. CHK.	PROJ. MGR. CH. ENGR.	MCB CAMP LEJEUNE, N.C.	
SUBMITTED BY: [Signature] DATE: 8-20-77		AUTOMOTIVE VEHICLE SHOP	
EPO: [Signature] RVD: [Signature] HD: [Signature] DIR: [Signature]		DETAILS, SCHEDULES, & DIAGRAMS	
APPROVED: [Signature] DATE: 2-24-77	OFFICER IN CHARGE	SIZE: F	CODE IDENT. NO.: 80091
APPROVED: [Signature] DATE: 7-21-77		NAVFAC DRAWING NO.: 4035392	CONSTR. CONTR. NO. N62470-76-B-622E
FOR EFD FOR COMMANDER NAVFAC		SCALE AS SHOWN	SPEC. 05-76-6225 SHEET 36 OF 45



REVISIONS		
STM	DESCRIPTION	DATE

STEAM PRESSURE REDUCING VALVE SCHEDULE

STATION	CAPACITY LB/HR	INLET PRESSURE	OUTLET PRESSURE	VALVE SIZE	REMARKS
PRV-1	710	150	50	3/4	
PRV-2	710	50	10	1/4	
PRV-3	2710	150	50	1/2	

CABINET HEATER SCHEDULE

UNIT NO.	M&H* HIGH/LOW	GPM	P.D. FT. H ₂ O	HIGH CFM	RPM HIGH/LOW	HP	ELEC. CHAR.	MODEL
CH-1	11/13.6	0.5	0.07	220	1100/700	1/60	115/160	VERTICAL RECESSED
CH-2	11/13.6	0.5	0.07	220	1100/700	1/60	115/160	HORIZONTAL RECESSED
CH-3	11/13.6	0.5	0.07	220	1100/700	1/60	115/160	HORIZONTAL EXPOSED

CONTROL VALVE SCHEDULE

VALVE NO.	FLUID	LB/HK OR GPM	UNIT SERVED	Cv	SIZE IN.	REMARKS
CV-1	HOT WATER	3.5	HC-1	2.5	1/2	NORMALLY OPEN, SPRING RETURN
CV-2	HOT WATER	3.5	HC-2	2.5	1/2	NORMALLY OPEN, SPRING RETURN
CV-3	STEAM	530	HE-1	16	1/4	NORMALLY CLOSED, SPRING RETURN
CV-4	STEAM	180	WH-1	4	1/2	NORMALLY CLOSED, SPRING RETURN

ROOFTOP COOLING UNIT SCHEDULE

UNIT NO.	SUPPLY AIR CFM	ESP IN. H ₂ O	OUTSIDE AIR CFM	COOLING CAPACITY-HIGH SENSIBLE	COOLING CAPACITY-HIGH TOTAL	EADD °F	EAWD °F	ELEC. CHAR.
RAC-1	1250	0.7	300	20.3	32.4	81.5	71.2	200/3/60
RAC-2	1600	0.7	300	26.8	41.0	80.5	70.3	200/3/60

HEATING COIL SCHEDULE

UNIT NO.	CFM	EAT °F	LAT °F	SIZE-INCHES	AIR-RD. H ₂ O	EWT °F	GPM	P.D. FT. H ₂ O	NO. ROWS
HC-1	1250	55	B5	21x12	0.45	200	3.5	0.1	2
HC-2	1600	55	B5	28x12	0.42	200	3.5	0.1	2

NOTES: OUTSIDE AIR ΔT 32° F DD; 80° F WD

LOUVER SCHEDULE

UNIT NO.	CFM	WIDTH X HEIGHT	REMARKS
L-1	1000	48" x 16"	WITH CHANNEL FRAME
L-2	400	24" x 16"	WITH CHANNEL FRAME

NOTES:
1. SET BOTTOM 8" AFF IN ALL CASES
2. LOUVERS TO BE 1/2" DEEP
3. FINISH TO BE DARK BROWN ANODIZED

HOT WATER UNIT HEATER SCHEDULE

UNIT NO.	M&H	EWT	G.P.M.	P.D. FT. H ₂ O	CFM	R.P.M.	HP	ELEC. CHAR.	MODEL
UH-1	34.2	200	3.5	0.20	1200	1550	1/20	115/160	VERTICAL DISCHARGE
UH-2	56.5	200	5.8	0.40	1752	1070	1/8	115/160	VERTICAL DISCHARGE
UH-3	7.3	200	0.7	0.02	315	1050	1/25	115/160	HORIZONTAL DISCHARGE
UH-4	6.3	200	0.7	0.01	280	1050	1/25	115/160	HORIZONTAL DISCHARGE

* EAT 40°F ** EAT 60°F *** EAT 70°F

DIFFUSERS, GRILLE, & REGISTER SCHEDULE

UNIT NO.	TYPE	SERVICE	CFM RANGE	SIZE	BLOW	REMARKS
D-1	CEILING DIFFUSER	SUPPLY AIR	140-280	9x9	4W	
D-2		SUPPLY AIR	440-630	15x15	3W	
D-3		SUPPLY AIR	630-900	18x18	3W	
R-1	SIDEWALL	RETURN AIR	950	10x30		
R-2	SIDEWALL	RETURN AIR	1275	24x24		
G-1	CEILING GRILLE	EXHAUST AIR	0-225	18x4		ALUMINUM
G-2	CEILING GRILLE		225-350	18x6		ALUMINUM
G-3	WALL GRILLE		0-225	18x4		ALUMINUM
G-4	WALL GRILLE		250-500	18x6		
G-5	WALL GRILLE		600-800	18x12		

EXHAUST FAN SCHEDULE

UNIT NO.	LOCATION	AIRFLOW CFM	T.S.P. IN. H ₂ O	H.P.	SPEED RPM	ELEC. CHAR.	SCHEM. MAX.	REMARKS
EF-1	OEM	2000	1/8	1/2	660	209/3/60	6	
EF-2	FIRST FLOOR TOILETS	625	1/4	1/2	870	115/160	6	
EF-3	TOOL & PARTS	750	1/4	1/4	950	115/160	6	
EF-4	EQUIPMENT	400	1/4	1/6	780	115/160	6	
EF-5	DISPATCHER	400	1/4	1/6	780	115/160	6	PROVIDE SOLID STATE SPEED CONTROL
EF-6	BATTERY SHOP	300	1/4	1/6	800	115/160	6	NON-SPARKING WHEEL
EF-7	TIRE SHOP	450	1/4	1/6	800	115/160	6	
EF-8	REPAIR BAYS	6500	1/8	1/2	385	209/3/60	6	
EF-9	SECOND FLOOR TOILETS	625	1/4	1/6	875	115/160	6	
EF-10	TAIL PIPE EXHAUST	2000	6	5	1800	100/3/60		
EF-11	LUDE ROOM	150	1/4	1/6	700	115/160	6	NON-SPARKING WHEEL

#1775

RECORD DRAWING		M-4
LETTER DATED 5 JANUARY 1981		
STETSON ARCHITECTS & ENGINEERS GREENVILLE, S.C.	DEPARTMENT OF THE NAVY NAVAL FACILITIES ENGINEERING COMMAND ATLANTIC DIVISION NAVY STATION NORFOLK, VIRGINIA	
DES. MGR. DR. CHK.	PROJECT MGR. CH. ENGR.	
SUBMITTED BY: <i>[Signature]</i> DATE: 2 9 81		
FIRM NUMBER:		
EFO: EPT/ML RVD: 0.28		
HD: <i>[Signature]</i> DIR:		
APPROVED: <i>[Signature]</i> DATE: 22 April 77		
OFFICER IN CHARGE:		
APPROVED: <i>[Signature]</i> DATE: 18 Jan 77	SIZE: F	CODE IDENT. NO.: 80091
FOR EFO FOR COMMANDER NAVFAC		
SCALE: NONE	SPEC: 05-76-6225	SHEET 37 OF 45

