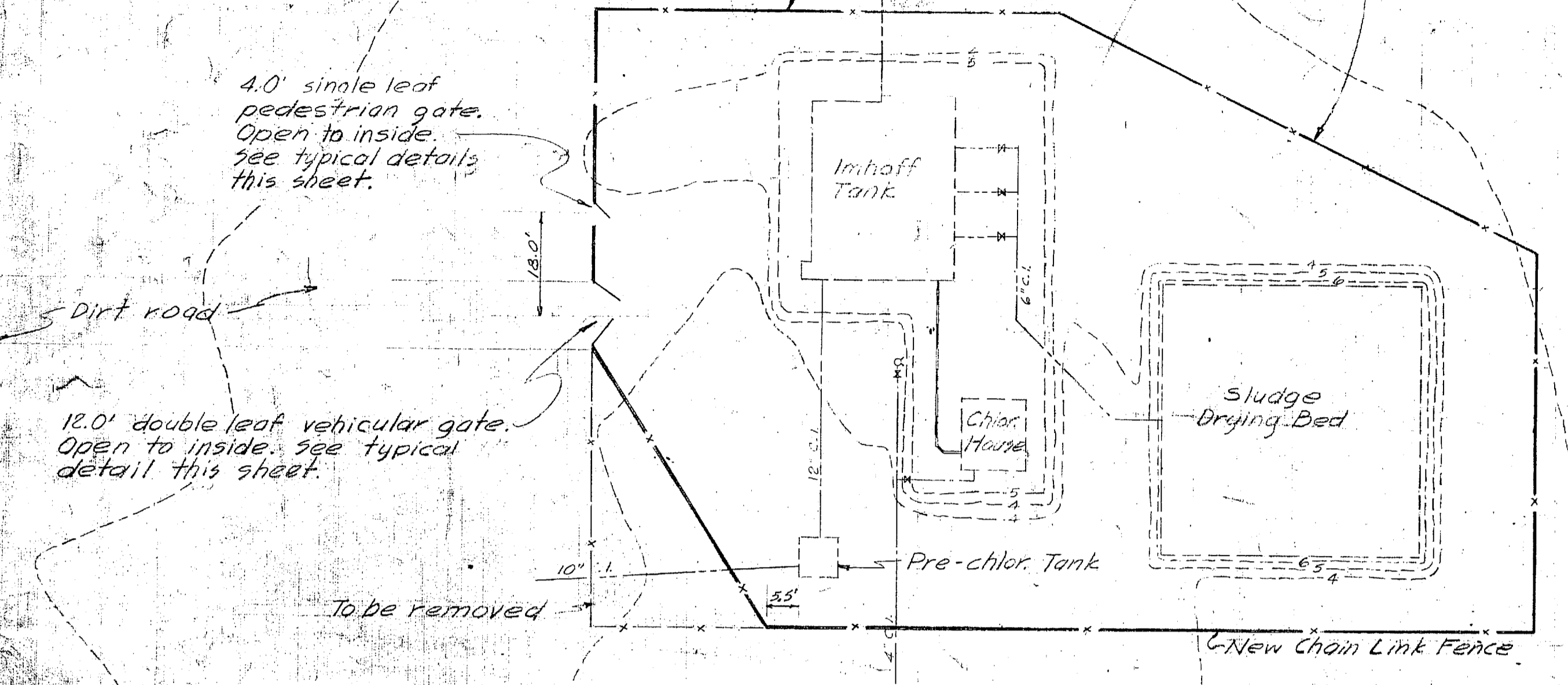
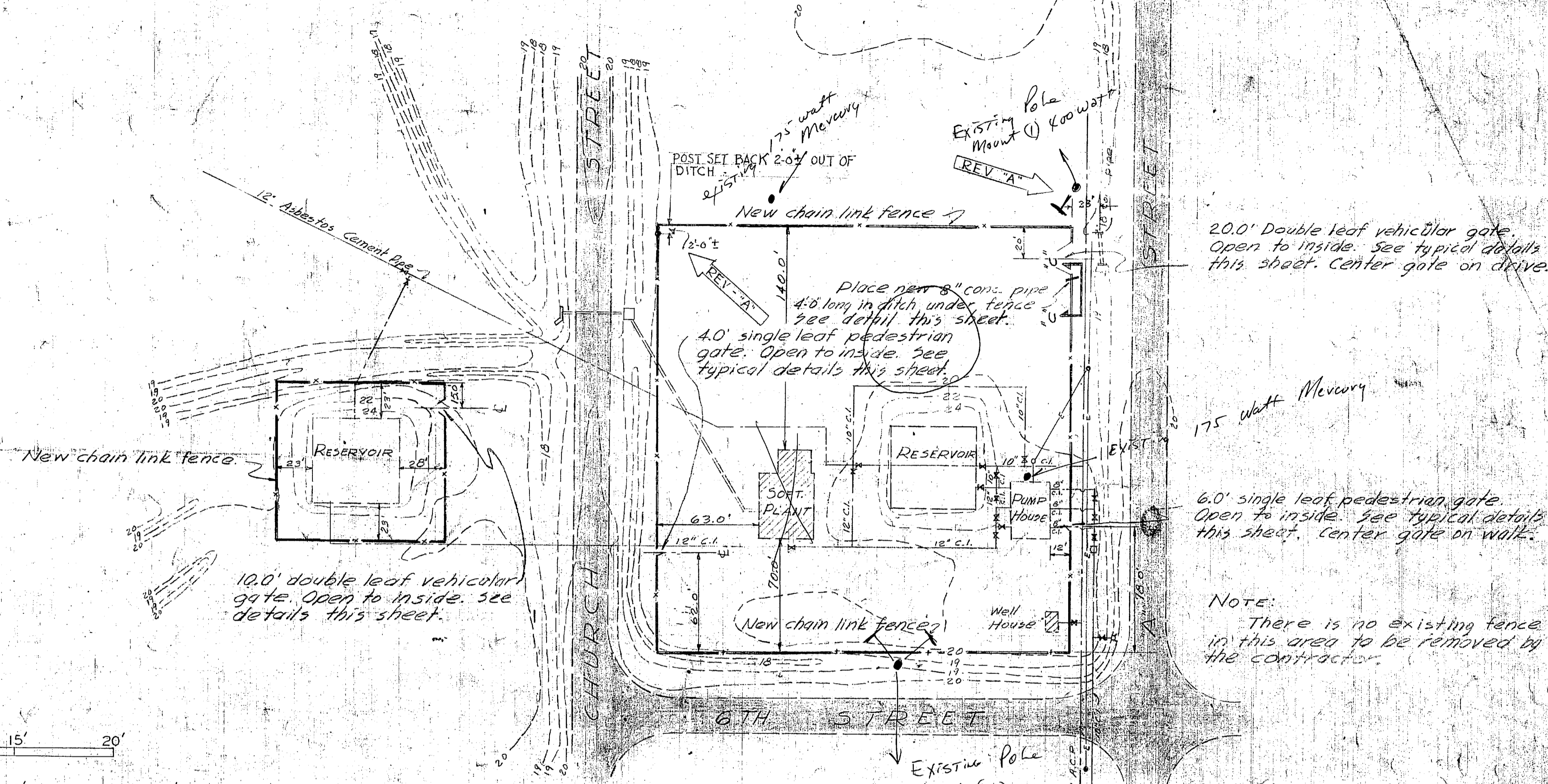


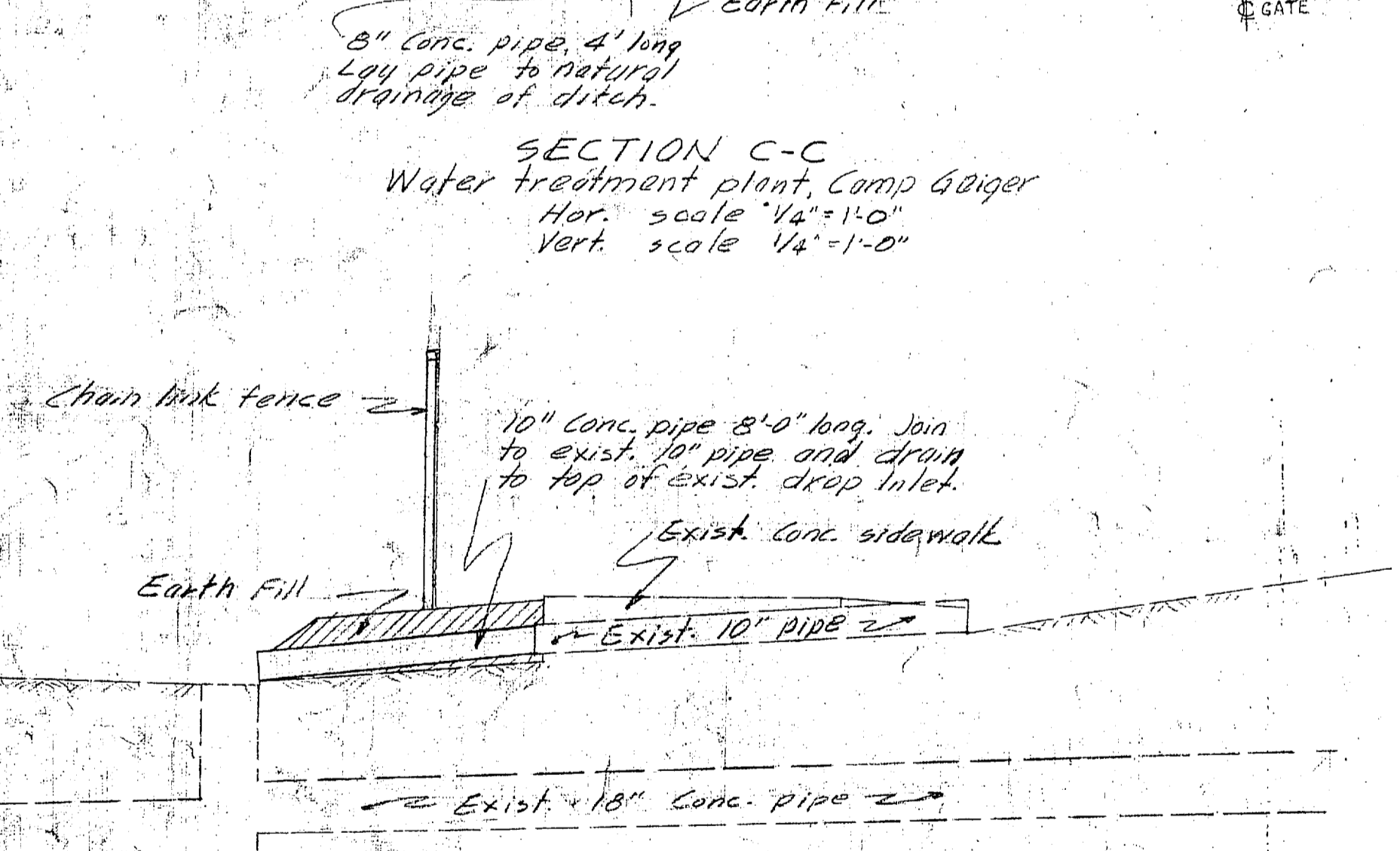
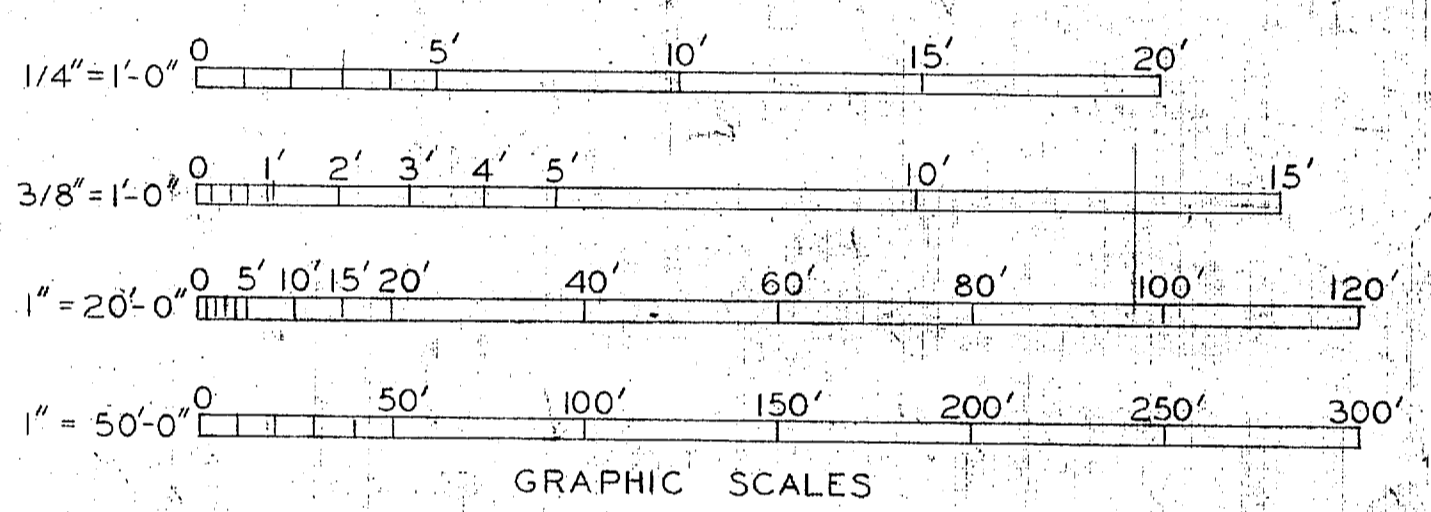
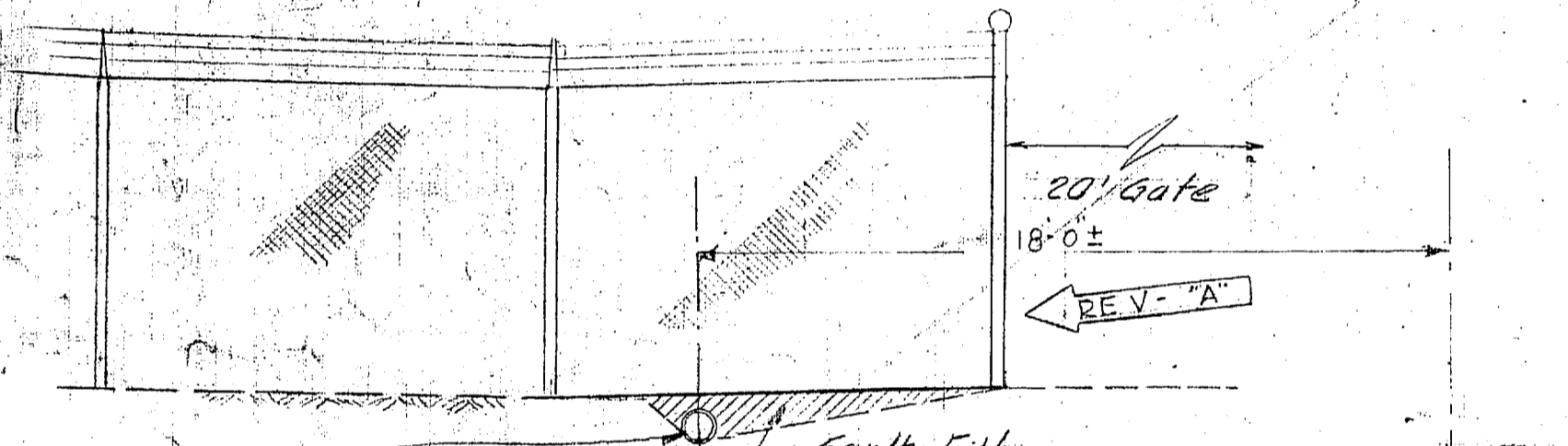
Note:
Contractor will remove existing fence which is located in same location as shown for new fence.



ONSLow BEACH SEWAGE TREATMENT PLANT
Scale 1" = 20'

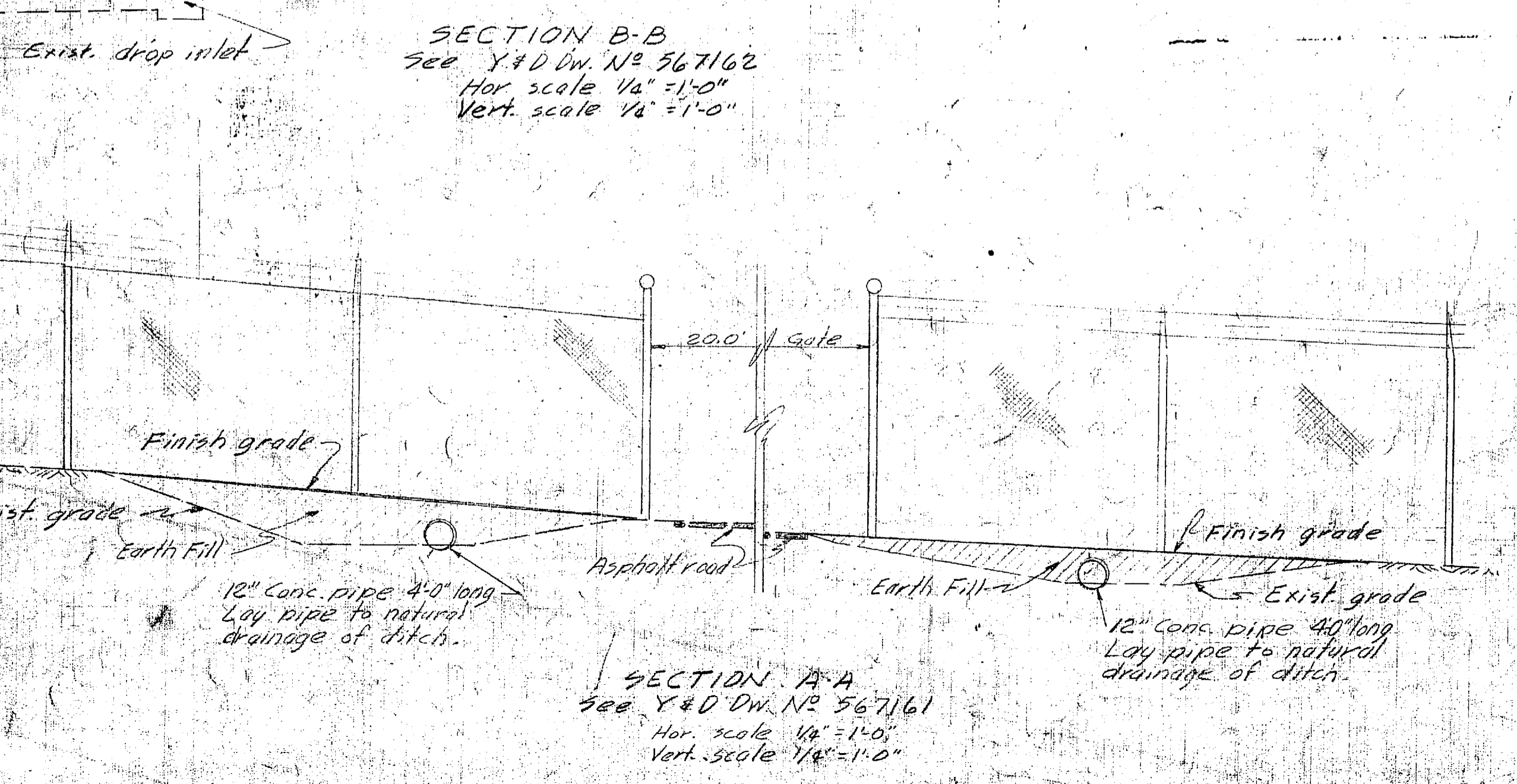


WATER TREATMENT PLANT
CAMP GEIGER
Scale 1" = 50'

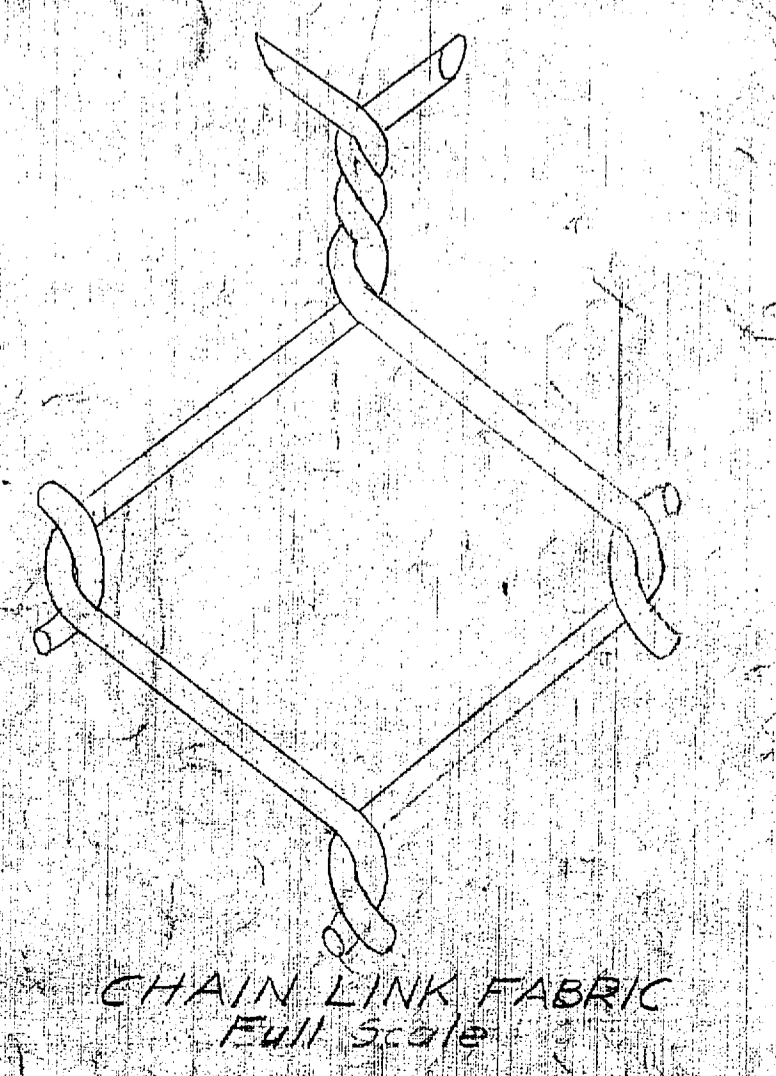
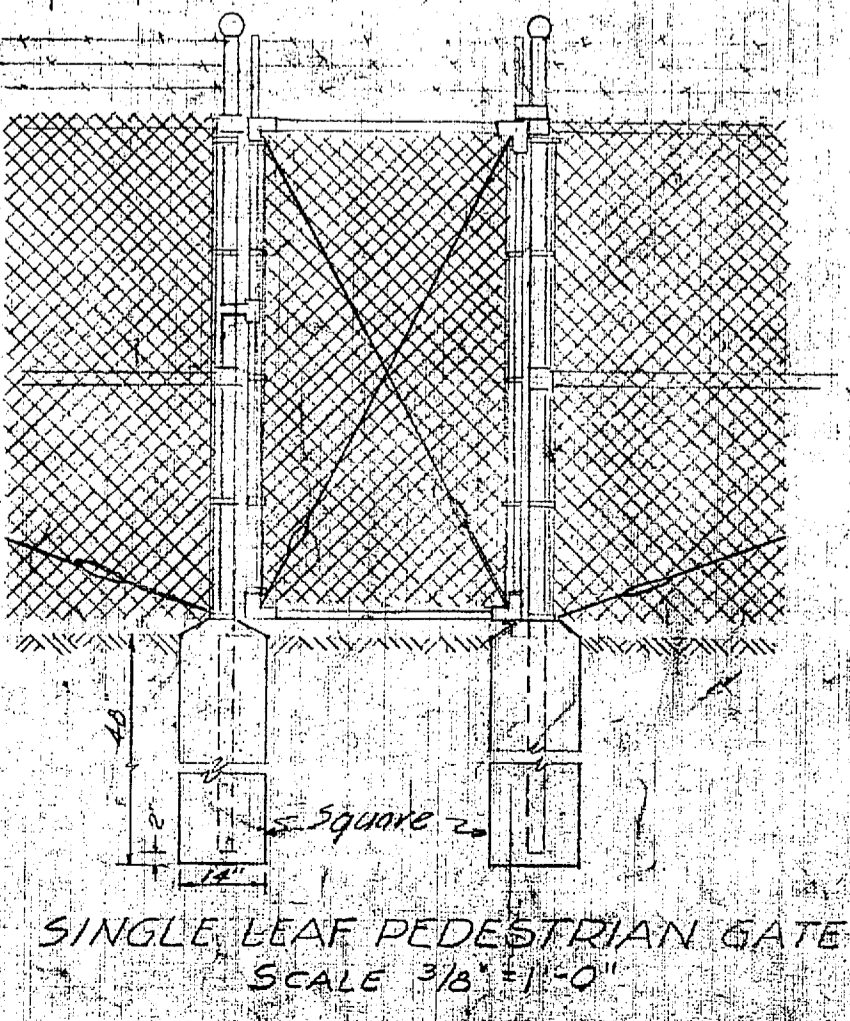
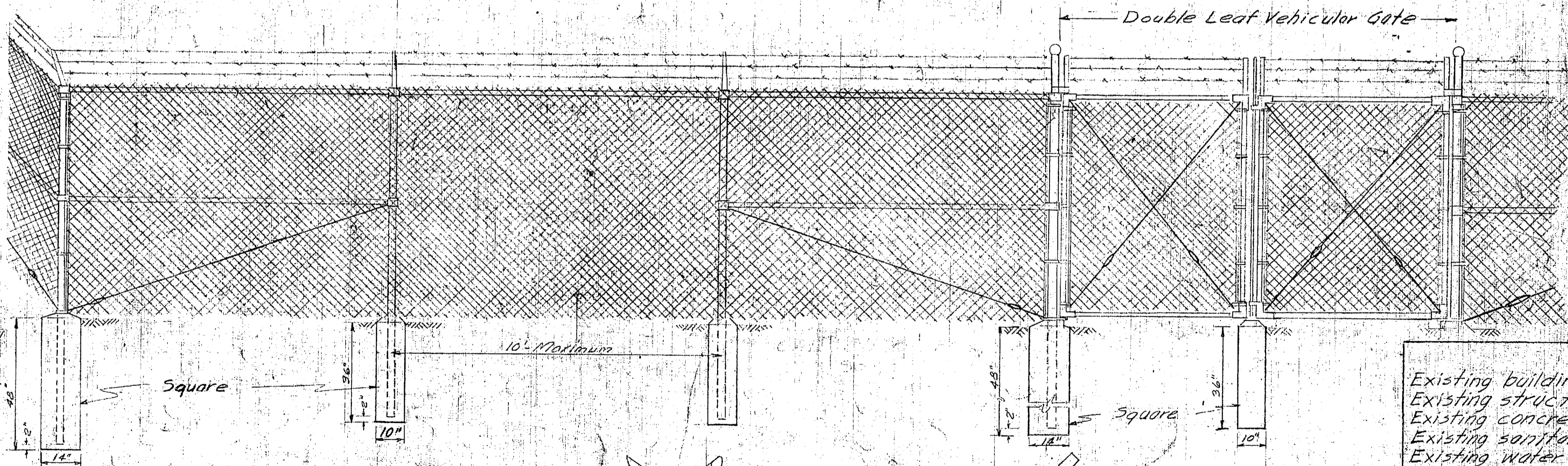


NOTE:
The top strand of barbed wire will be approximately 1'-0" above the wire fabric. Maintain this same distance for the special section with the vertical arm as for the typical section with the 45° arm.

TYPICAL CROSS-SECTION
SCALE 3/16" = 1'-0"



SPECIAL SECTION
See Y&D DW. No 567162
SCALE 3/16" = 1'-0"



TYPICAL 45° ARM
No Scale

BALL TOP FOR GATE POST
No Scale

LEGEND

Existing buildings	▨
Existing structure limits	---
Existing concrete sewer pipe	—
Existing sanitary sewer storm	○
Existing water main	○
Existing electric power line	—
Existing paved roads	▨
Existing concrete walks	▨
Existing contours	---
New chain link fence	▨

REVISION DATE	APPD.	DESCRIPTION	BY
9-30-53	AWB	AS BUILT	
P.W. DRAWING NO.		MARINE BARRACKS CAMP LEJEUNE, N. C.	
9063		FENCING WATER AND SEWER PLAN CAMP GEIGER AREA ONSLow BEACH	
DES.	AWB	APPROVED	
DRWN.	AWB	APPROVED	
TR.	AWB	APPROVED	
CHK.	AWB	APPROVED	
SUPV.	AWB	APPROVED	
IN CHARGE		APPROVED	
APPROVED		APPROVED	
DATE		THE QUARTERMASTER GENERAL OF THE MARINE CORPS	

