



UNITED STATES MARINE CORPS
Marine Corps Base
Camp Lejeune, North Carolina 28542-5001

IN REPLY REFER TO:

11000

PWO

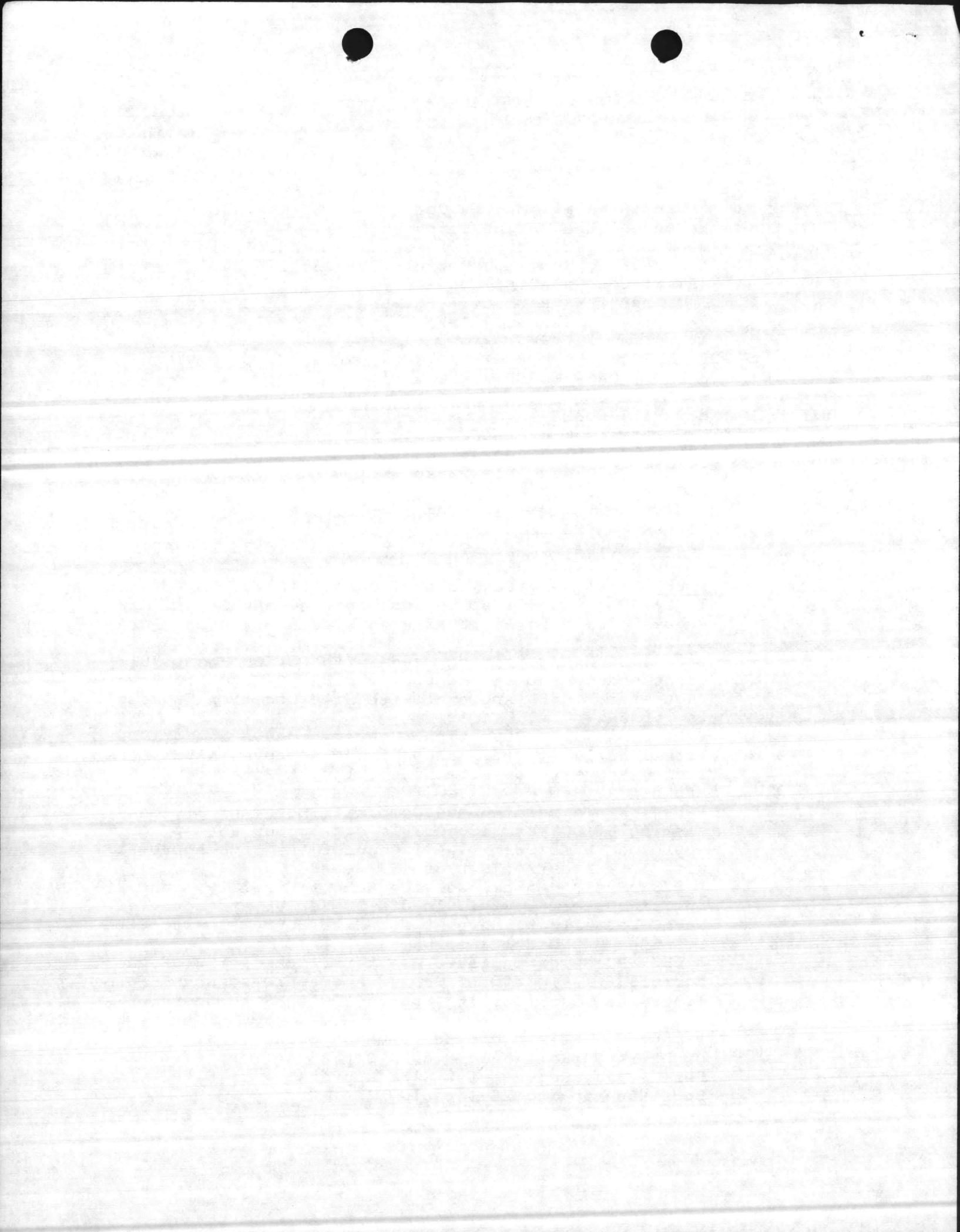
29 SEP 1986

From: Commanding General, Marine Corps Base, Camp Lejeune
To: Commandant of the Marine Corps (LFF-1)
Via: (1) Commander, Atlantic Division, Naval Facilities
Engineering Command, Norfolk, VA 23511-6287
(ATTN: Code 09A21B3/Code 407)
(2) Commander, Naval Facilities Engineering Command
200 Stovall Street, Alexandria, VA 22332

Subj: FY-90 MILITARY CONSTRUCTION (MCON) PROGRAM FOR MARINE
CORPS BASE, CAMP LEJEUNE, NC

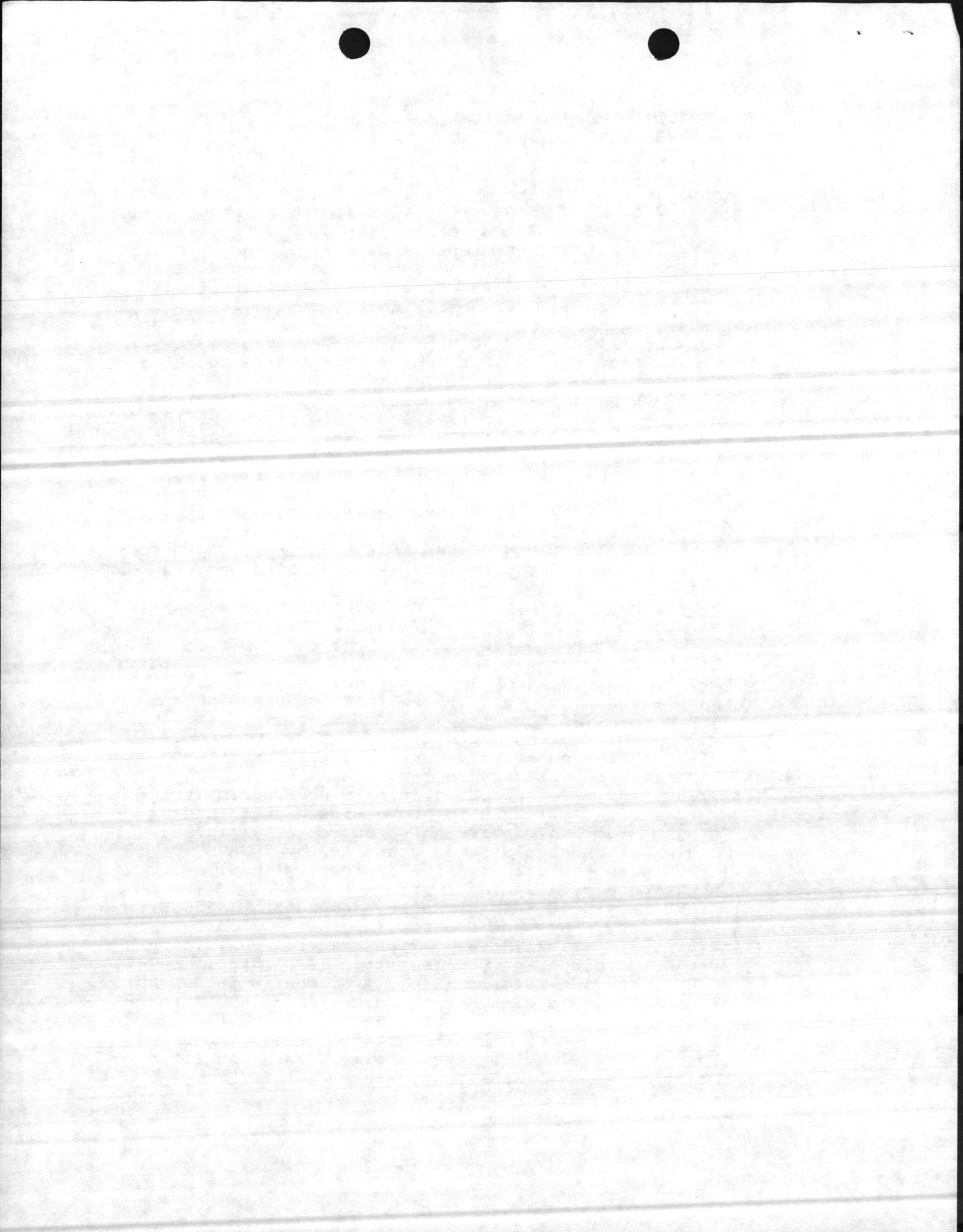
Ref: (a) MCO P11000.12B
(b) CMC ltr 11000 over LFF-1 dtd 8 Jul 86
(c) CMC msg 050129Z Aug 86
(d) CG MCB CLNC msg 191422Z Aug 86
(e) CMC msg 210124Z Aug 86

Encl: (1) Revised NAVMC 10956 Summary for Correction of Facility
Deficiencies for FY-90 MCON program dtd 30 Sep 86
(2) FY-90 MCON Program:
✓ P-887, Wallace Creek Bridge, consisting of DD Form
1391/1391c dtd 30 Sep 86 and approved NAVMC Form 11069
Request for Site Approval with Site Location Map dtd
30 Sep 1986
✓ P-869, Land Acquisition, consisting of DD Form 1391/
1391c dtd 30 Sep 86 and approved NAVMC Form 11069,
Request for Site Approval with Site Location Map dtd
24 Feb 86
OC P-057, Division Operations Center, consisting of DD
Form 1391/1391c dtd 30 Sep 86 and approved NAVMC Form
11069, Request for Site Approval with Site Location
Map dtd 22 Sep 81
✓ P-804, Field Maintenance Complex (Increment 3), con-
sisting of DD Form 1391/1391c dtd 30 Sep 86 and
approved NAVMC Form 11069, Request for Site Approval
with Site Location Map dtd 30 Sep 86
✓ P-828, Field Medical Service School Facility, consist-
ing of DD Form 1391/1391c dtd 30 Sep 86 and approved
NAVMC Form 11069, Request for Site Approval with Site
Location Map dtd 18 Sep 86
OC P-630, Bachelor Enlisted Quarters, consisting of DD
Form 1391/1391c dtd 30 Sep 86 and approved NAVMC Form
11069, Request for Site Approval with Site Location
Map dtd 18 Sep 86
OC P-196, Combat Vehicle Maintenance Shop, consisting
of DD Form 1391/1391c dtd 30 Sep 86 and approved NAVMC
Form 11069, Request for Site Approval with Site
Location Map dtd 22 Sep 81



Subj: FY-90 MILITARY CONSTRUCTION (MCON) PROGRAM FOR MARINE
CORPS BASE, CAMP LEJEUNE, NC

- ~~ok~~ P-644, Electronics/Communications Maintenance Shop, consisting of DD Form 1391/1391c dtd 30 Sep 86 and approved NAVMC Form 11069, Request for Site Approval with Site Location Map dtd 22 Sep 81
- ✓ P-881, Anti-Tank Maintenance Facility, consisting of DD Form 1391/1391c dtd 30 Sep 86 and approved NAVMC Form 11069, Request for Site Approval with Site Location Map dtd 18 Sep 86
- ✓ P-849, Bachelor Officers Quarters, consisting of DD Form 1391/1391c dtd 30 Sep 86 and approved NAVMC Form 11069, Request for Site Approval with Site Location Map dtd 24 Jul 85
- ✓ P-842, Regional Automated Service Center (RASC), consisting of DD Form 1391/1391c dtd 30 Sep 86 and approved NAVMC Form 11069, Request for Site Approval with Site Location Map dtd 24 Jul 84
- ~~ok~~ P-065, Gymnasium, consisting of DD Form 1391/1391c dtd 30 Sep 86 and approved NAVMC Form 11069, Request for Site Approval with Site Location Map dtd 16 Nov 81
- ✓ P-824, Chapel (Tarawa Terrace), consisting of DD Form 1391/1391c dtd 30 Sep 86 and approved NAVMC Form 11069 Request for Site Approval with Site Location Map dtd 30 Aug 82
- ✗ P-672, Road Improvements (Brewster Blvd. Overpass), consisting of DD Form 1391/1391c and approved NAVMC Form 11069, Request for Site Approval with Site Location Map dtd 24 Feb 86.
- ~~ok~~ P-853, Vehicle Ready Fuel Storage, project package consisting of DD Form 1391/1391c dtd 30 Sep 86 and approved NAVMC Form 11069, Request for Site Approval with Site Location Map dtd 24 Jul 85
- (3) NAVMC 10956 Summary for Correction of Facility Deficiencies for Navy Centrally Managed Program
- (4) FY-87 Energy Conservation Investment Program (ECIP)
 - ✓ P-799, Add Insulation to Above-Ground Steam Lines, project package consisting of DD Form 1391/1391c, Life Cycle Cost Analysis Summary and Approved NAVMC Form 11069 with Request for Site Approval with Site Location Map, all dtd 14 Apr 86
- (5) FY-89 Navy Occupational Safety and Health (NAVOSH) Deficiency Abatement Program
 - ~~ok~~ P-811, Electrical Safety Improvements, Preliminary Project Engineering Documentation (PED) dtd 1 Jan 86
 - ✓ P-864, Provide Exterior Stairways, consisting of DD Form 1391/1391c with NAVFAC Form 11013/7 and Site Location Map, all dtd 12 Sep 85
 - ~~ok~~ P-788, Provide Fire Alarm Systems, consisting of DD Form 1391/1391c with NAVFAC Form 11013/7 and Site Location Map all dtd 12 Sep 85



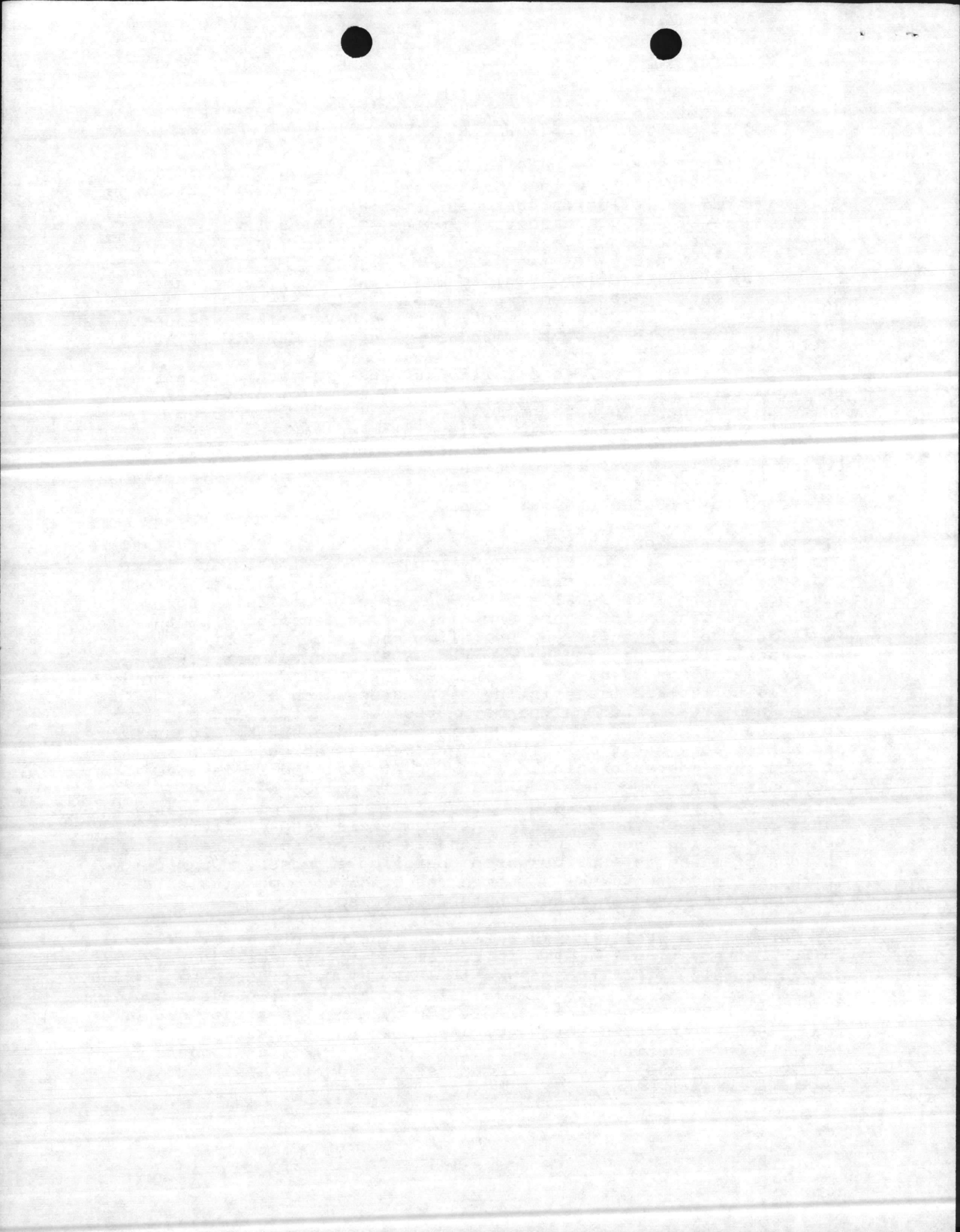
Subj: FY-90 MILITARY CONSTRUCTION (MCON) PROGRAM FOR MARINE
CORPS BASE, CAMP LEJEUNE, NC

- ✓ P-867, Modify Loading Docks, consisting of DD Form 1391/ 1391c with NAVFAC Form 11013/7 and Site Location
- (6) FY-89 Pollution Abatement Program
- ✓ P-829, Fly Ash Control System, Building 1700, project package consisting of DD Form 1391/1391c dtd 14 Aug 85
- ✓ P-845, Tactical Vehicle Wash Down Facility, project package consisting of DD Form 1391/1391c dtd 15 Jul 86 (LANTDIV Mark-up), and approved NAVMC 11069, Request for Site Approval with Site Location Map dtd 30 Aug 84

1. Reference (a) provided detailed guidance in the formulation and submission of MCON programming. Reference (b) provided guidance for the Camp Lejeune Military Construction Program specifically requesting project documentation for the FY-90 program. Reference (c) requested Navy Centrally Managed Project Documentation be submitted with the FY-90 program by 15 September 1986. Reference (d) requested extension to 30 September and reference (e) granted the extension.

2.- This submission provides developed MILCON projects for FY-90. Our program consists of four FY-90 projects previously submitted and the resubmission of nine FY-89 projects. In addition, there are two new projects P-881 and P-887. Project submission for P-881, Anti-Tank Maintenance Facility, was necessitated by the formulation of the Anti-Tank Battalion and is consistent with the Base Facilities Support Requirements (FSR) dated January 1986, and revised 1 May 1986. P-887, Wallace Creek Bridge, is urgently required to replace the existing structures which have deteriorated and are located on the main artery of ingress and egress to Marine Corps Base. The bridge inspection report by Bigger and Agnew, Inc. dated July 1986, recommended replacement based on structural deterioration. As a result, reduced loads have been posted and immediate repairs are being made to extend service five years when reduced loads will again become necessary. At present, heavy equipment, commercial and military vehicles are required to use alternate indirect routes resulting in loss of manhours and increased operation expenses. Upgrading to three-lane structures is deemed essential to cope with existing and anticipated increase in traffic volumes.

3. Our Navy Centrally Managed Program consists of one FY-87 Energy Conservation Investment Program (ECIP) project, four FY-89 Navy Occupational Safety and Health (NAVOSH) Deficiency Abatement Program projects, and two FY-89 Pollution Abatement program projects; P-811, Electrical Safety Improvements, has been dropped from FY-88 to the FY-89 program. As shown on enclosure (3) P-822, Refuse Burning Supplemental Steam Plant, is no longer required and cancellation is requested. This represents our complete current program.



Subj: FY-90 MILITARY CONSTRUCTION (MCON) PROGRAM FOR MARINE
CORPS BASE, CAMP LEJEUNE, NC

4. Enclosure (1) submits revised NAVMC 10956, Summary for Correction of Facility Deficiencies, for FY-90 MILCON program to reflect proper category codes, title and cost; and enclosure (2) submits project documentation. Enclosure (3) NAVMC 10956, Summary for Correction of Facility Deficiencies Navy Centrally Managed program projects with enclosures (4) through (6) depicting project documentation as submitted. In accordance with references (a) through (e) enclosures (1) through (6) are hereby submitted.

5. The Atlantic Division, Naval Facilities Engineering Command is requested to certify the cost of all projects as shown by enclosures (1) and (2) to the Commander, Naval Facilities Engineering Command with copies to CMC and this Command. It is further requested the status of all Navy Centrally Managed Projects as shown by enclosures (3) through (6) be forwarded to this Command with copy to CMC.

T. J. DALZELL
By direction

Copy to:

CMC (LFF) (advance)
NAVFACENGCOM (advance)
CG, FMFLANT (G-4)
CG, 2d MARDIV
CG, 2d FSSG
CG, II MAF
CG, 6th MAB

Blind copy to:

FAC
PMO (Project P-672 only)
LOG (Projects P-672 and P-853 only)
MAINT
BASE CHAPLAIN (Project P-824 only)
AREA COM, CAMP GEIGER (Project P-828 only)
FIELD MED SCHOOL (Project P-828 only)

