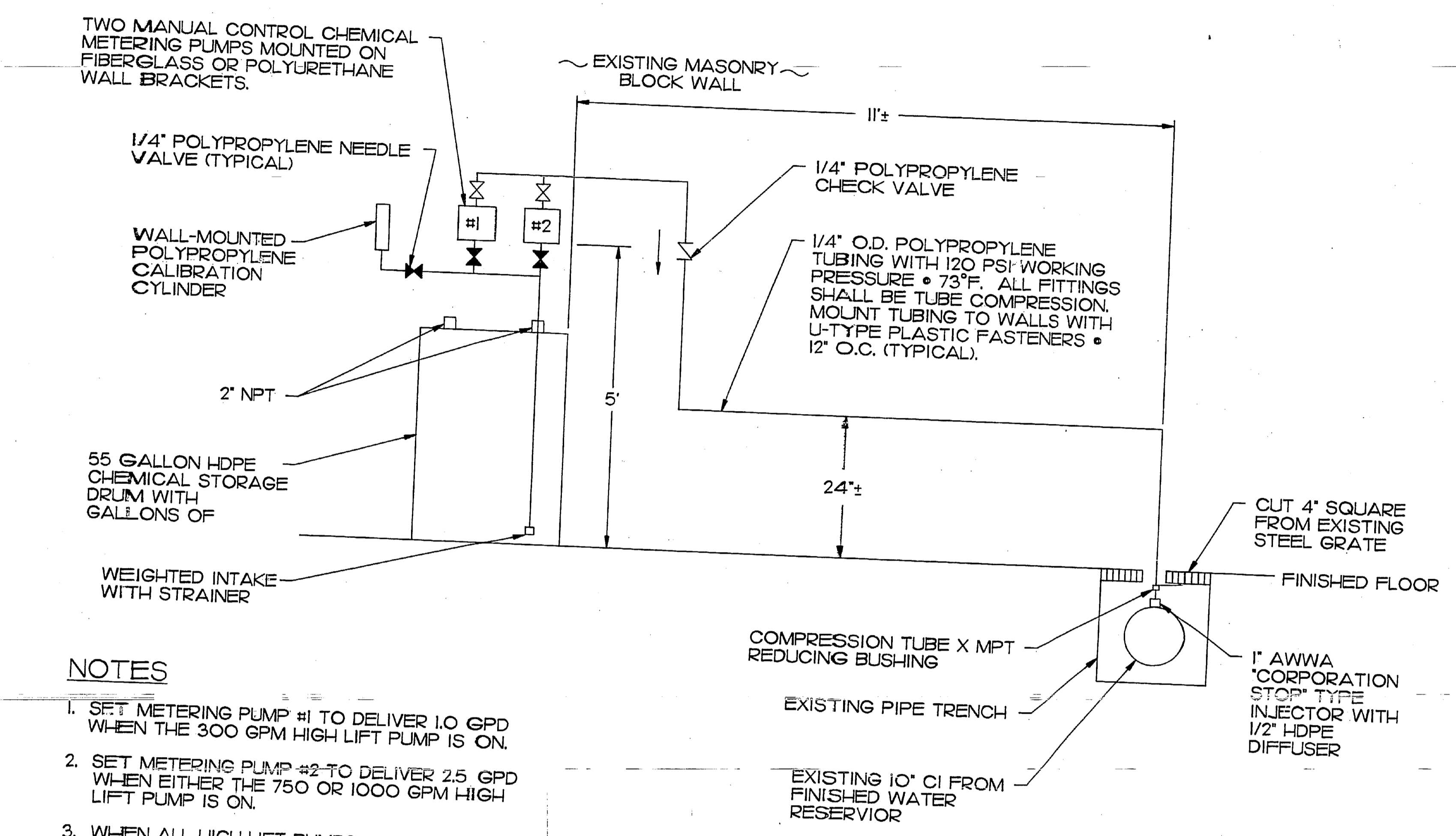
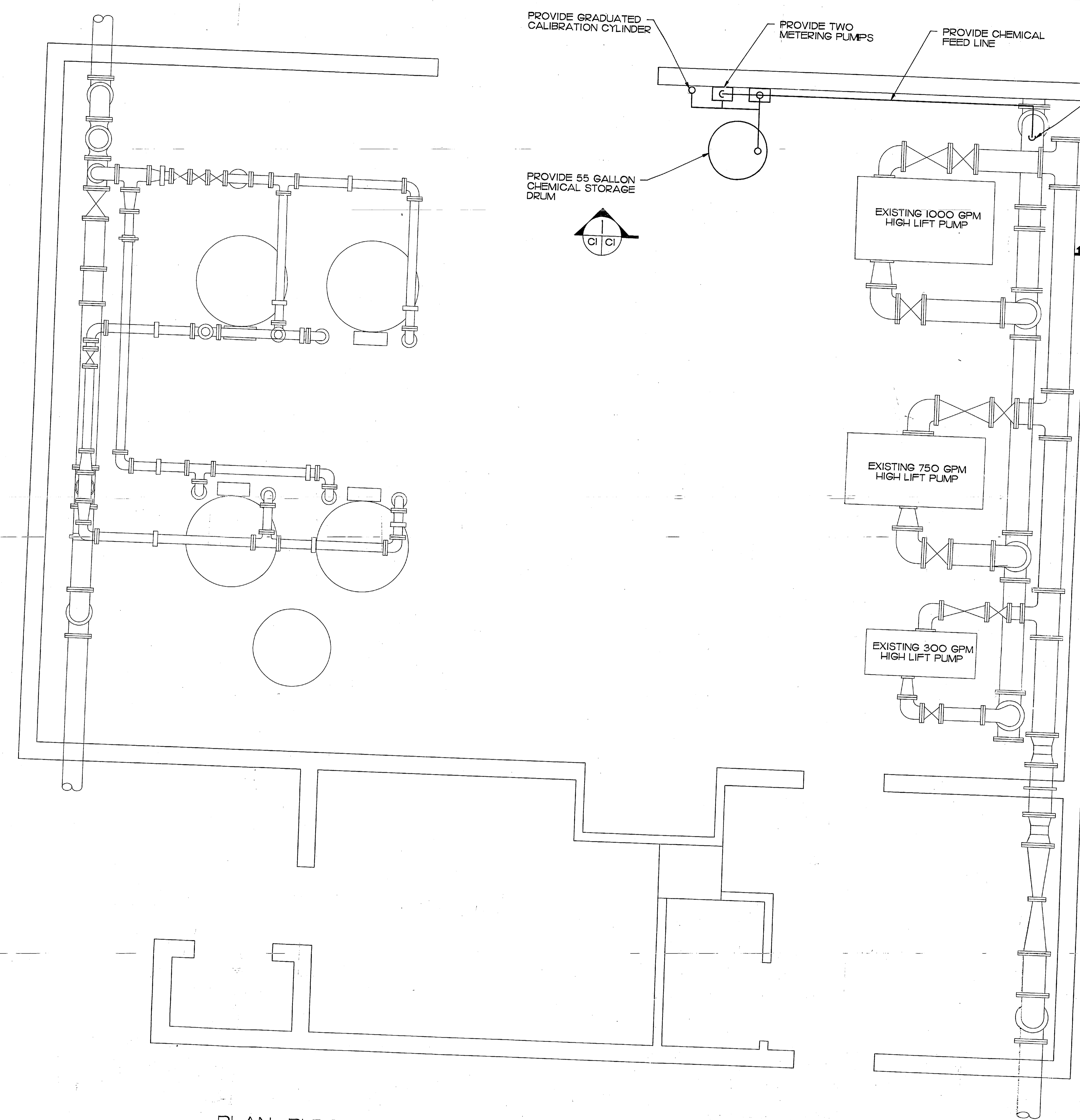


REVISIONS		
SYM	DATE	APPROVED



NOTES

1. SET METERING PUMP #1 TO DELIVER 1.0 GPD WHEN THE 300 GPM HIGH LIFT PUMP IS ON.
2. SET METERING PUMP #2 TO DELIVER 2.5 GPD WHEN EITHER THE 750 OR 1000 GPM HIGH LIFT PUMP IS ON.
3. WHEN ALL HIGH LIFT PUMPS ARE OFF, THEN BOTH METERING PUMPS SHALL BE OFF.
4. ALL PUMPS SHALL BE CONNECTED TO THE RESPECTIVE HIGH LIFT PUMP.
5. THE CHEMICAL FEED RATES ARE BASED ON AN AVERAGE DAILY PLANT PRODUCTION OF 12,000 GPD. THE CHEMICAL FEED RATE EQUATES TO A 4MG/L RESIDUAL.

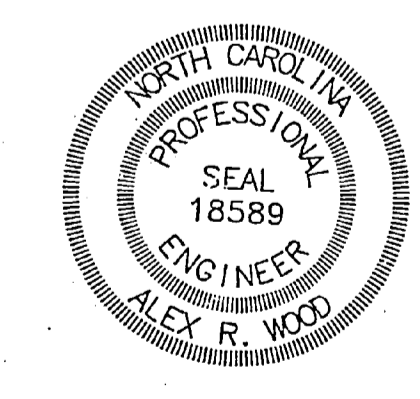


ZINC ORTHOPHOSPHATE CHEMICAL FEED DETAIL

NOTES

- 1) ZINC ORTHOPHOSPHORIC ACID - 36% PHOSPHORIC ACID
24% ZINC CHLORIDE
- 2) METERING PUMPS - MANUAL CONTROL, POSITIVE DISPLACEMENT TYPE WITH 0 TO 5 GPD ADJUSTABLE FLOW RATE. PUMPS SHALL BE 120 VAC AND SHALL BE CERTIFIED BY THE SUPPLIER TO BE COMPATIBLE WITH ZINC ORTHOPHOSPHORIC ACID. PUMP SHALL BE CAPABLE OF DELIVERING THE FULL RANGE OF FLOW AT 120 PSI TOTAL DYNAMIC HEAD.
- 3) POLYPROPYLENE TUBING - 1/4" O.D. POLYPROPYLENE TUBING OF TRANSLUCENT OR WHITE COLOR. TUBING SHALL HAVE A 300 PSI WORKING PRESSURE AT 73 F.
- 4) POLYPROPYLENE CHECK VALVE - IN LINE FLAPPER TYPE DESIGNED FOR CHEMICAL FEED APPLICATIONS. HOUSING SHALL BE POLYPROPYLENE WITH TEFLON, EPDM, OR VITON SEALS AND SEATS. VALVE SHALL SEAL CLOSED AT 1 PSI BACK PRESSURE.
- 5) POLYPROPYLENE NEEDLE VALVE - PANEL MOUNTABLE POLYPROPYLENE WITH TEFLON SEALS. PROVIDE WITH THREADED FPT ENDS AND MALE COMPRESSION TYPE INSERTS FOR USE WITH TUBING. VALVE SHALL BE GLOBE STYLE.
- 6) WALL-MOUNTED CALIBRATION CYLINDER - SHALL BE A NATURAL COLOR GRADUATED POLYPROPYLENE CYLINDER WITH 100 ML CAPACITY AND 1 ML CALIBRATIONS. UNIT SHALL BE WALL-MOUNTED WITH A TUBE CONNECTION AT THE BOTTOM.
- 7) 'CORPORATION STOP' TYPE INJECTOR - 1" AWWA CORPORATION STOP WITH 1/2" DIA. POLYPROPYLENE INJECTOR NOZZLE. NOZZLE SHALL EXTEND THROUGH THE CORPORATION STOP SO THAT THE CHEMICAL IS RELEASED AT THE CENTER OF THE PIPE.
- 8) U-TYPE PLASTIC FASTENERS - U-TYPE FASTENERS SHALL BE POLYPROPYLENE, POLYETHYLENE, OR PVC. EACH FASTENER SHALL HAVE TWO SCREWS FOR CONNECTION TO THE WALL. SCREWS SHALL BE STAINLESS STEEL WITH PLASTIC EXPANSION ANCHORS FOR ATTACHMENT TO MASONRY.
- 9) POLYPROPYLENE COMPRESSION FITTINGS - 120 PSI • 73 F COMPRESSION TYPE FOR TUBING TO TUBING OR TUBING TO PIPE AS REQUIRED.

PLAN- BLDG. BA-138
SCALE 1/2" = 1'-0"



PRELIMINARY		C1	
DEPARTMENT OF THE NAVY - NAVAL FACILITIES ENGINEERING COMMAND			
MARINE CORPS BASE			
CAMP LEJEUNE, NORTH CAROLINA			
INSTALL CORROSION CONTROL, BA-138			
PLAN AND DETAILS			
DES. ALEX R. WOOD	DATE	SIZE	CODE IDENT. NO.
CHK. DR. BETH CLARK		F	80091
SUBMITTED BY:			
DESIGN DIR. F.E. CONE			
APPROVED: PWO OR OICC			
SATISFACTORY TO:	DATE	CONST. CONTR. NO. N62470-95-B-1455	NAVAFAC DRAWING NO. X
		SCALE: NOTED	SPEC. 05-95-1455 SHEET X OF X

