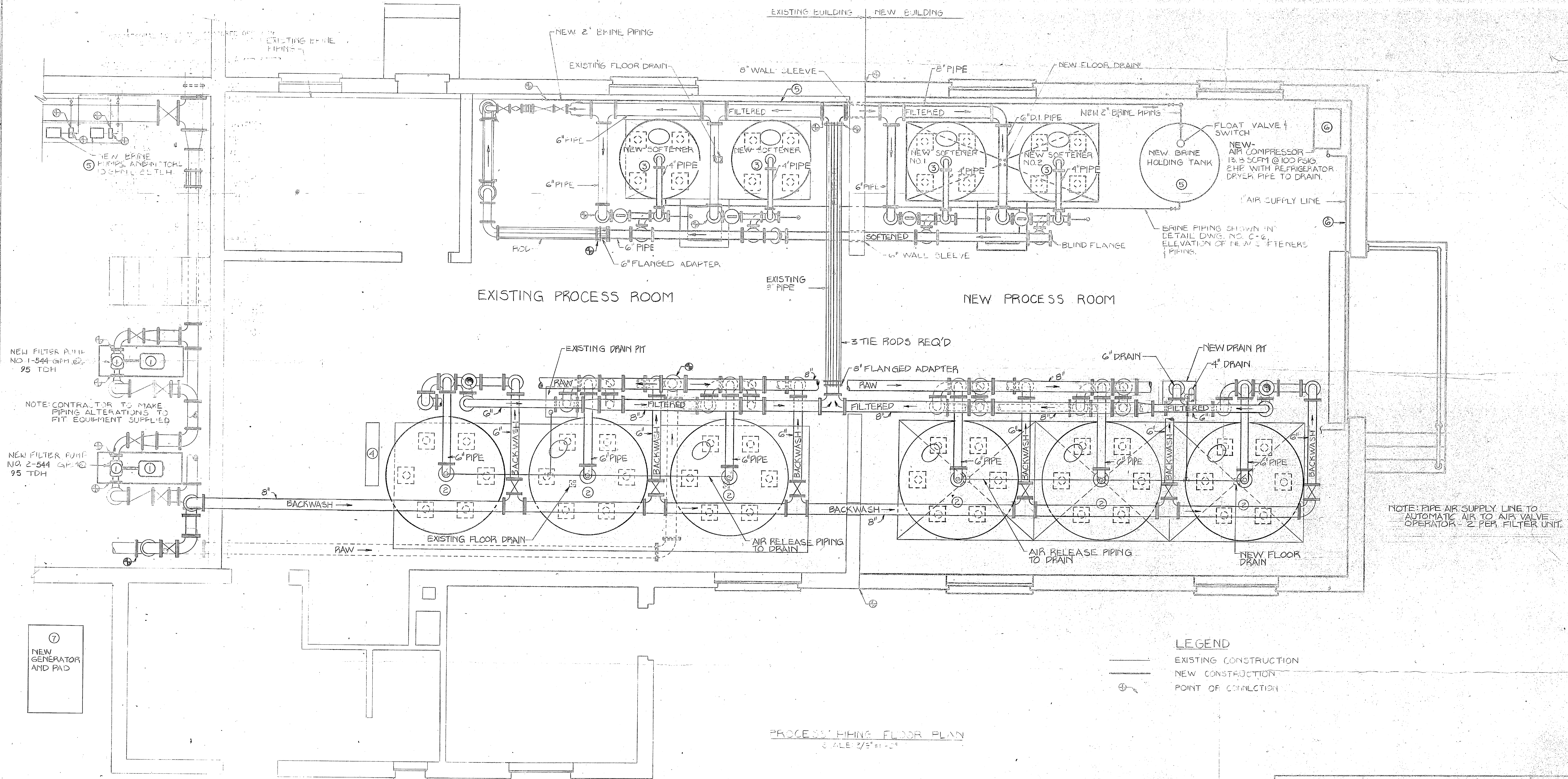


SUMMARY OF NEW WORK WITHIN WATER PLANT

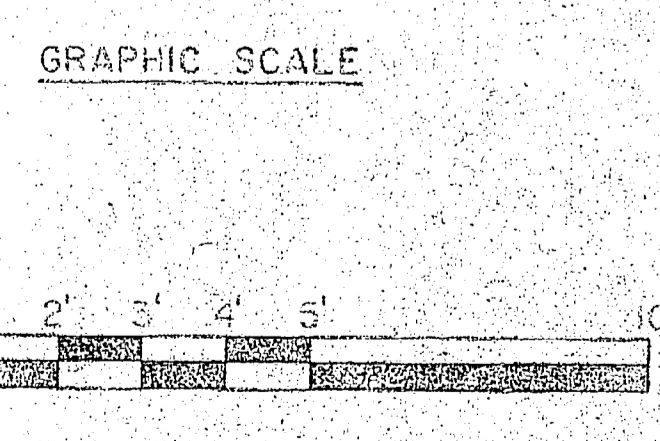
- ① PROVIDE NEW FILTER PUMPS, NEW MOTORS, AND NEW CONTROLS. SEE DWG. NO. C-5.
- ② PROVIDE NEW 7.5 FT. DIA. FILTERS WITH 4 FT. STRAIGHT SIDES, NEW PIPING, NEW VALVES, AND NEW CONTROLS. SEE DWGS. C-5, C-6, & C-7.
- ③ PROVIDE NEW 3 FT. DIA. SOFTENERS, NEW PIPING, NEW VALVES, AND NEW CONTROLS. SEE DWGS. C-5, C-6, & C-7.
- ④ PROVIDE NEW FILTER AND SOFTENER CONTROL PANEL WITH CONTROLS. SEE DWG. NO. C-7.
- ⑤ PROVIDE NEW BRINE TANK, NEW PIPING, NEW VALVES, NEW PUMPS, NEW MOTORS, AND NEW CONTROLS. SEE DWG. C-5, & C-6.
- ⑥ PROVIDE NEW 2 HP. AIR COMPRESSOR, WITH DRYER, AND NEW SUPPLY PIPING. SEE DWG. NO. C-5.
- ⑦ PROVIDE NEW UNDERGROUND FUEL STORAGE TANK, PROVIDE NEW STAND-BY GENERATOR AND PIPING TO GENERATOR FOR ONE 15 HP FILTER PUMP & ONE 2 HP AIR COMPRESSOR. SEE DWGS. NO. C-3, C-5, C-7, & M-1.

REVISIONS			
NO.	DESCRIPTION	DATE	APPROVED



LEGEND
 ——— EXISTING CONSTRUCTION
 - - - - - NEW CONSTRUCTION
 ⊕ POINT OF CONNECTION

PROCESS PIPING FLOOR PLAN
 SCALE 3/8" = 1'-0"



⑦ SEE DWGS. NO. C-3, C-5, C-7, & M-1

CM-5

L.E. WOOLTER & COMPANY CONSULTING ENGINEERS RALEIGH, NORTH CAROLINA		DEPARTMENT OF THE NAVY - NAVAL FACILITIES ENGINEERING COMMANDER ATLANTIC DIVISION MARINE CORPS BASE, CAMP LEJEUNE, N.C. UTILITIES - IMPROVEMENTS WATER PLANT	
DESIGNED BY: [] DRAWN BY: [] CHECKED BY: [] DATE: []	PROJECT NO.: [] SHEET NO.: []	TITLE: WATER PLANT - SUMMARY OF NEW WORK PROCESS PIPING - FLOOR PLAN	SCALE: AS NOTED DATE: 05-18-1973

