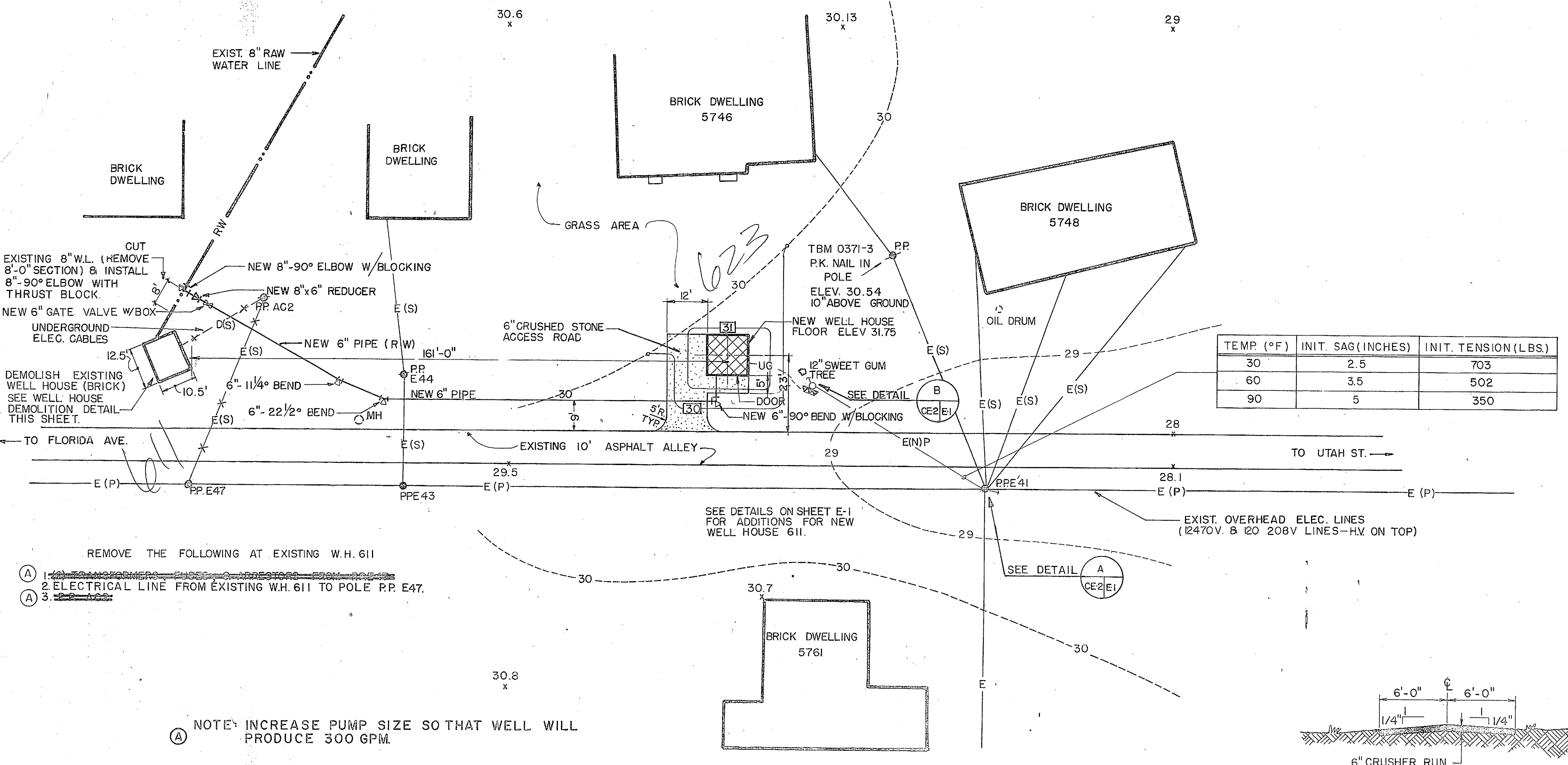
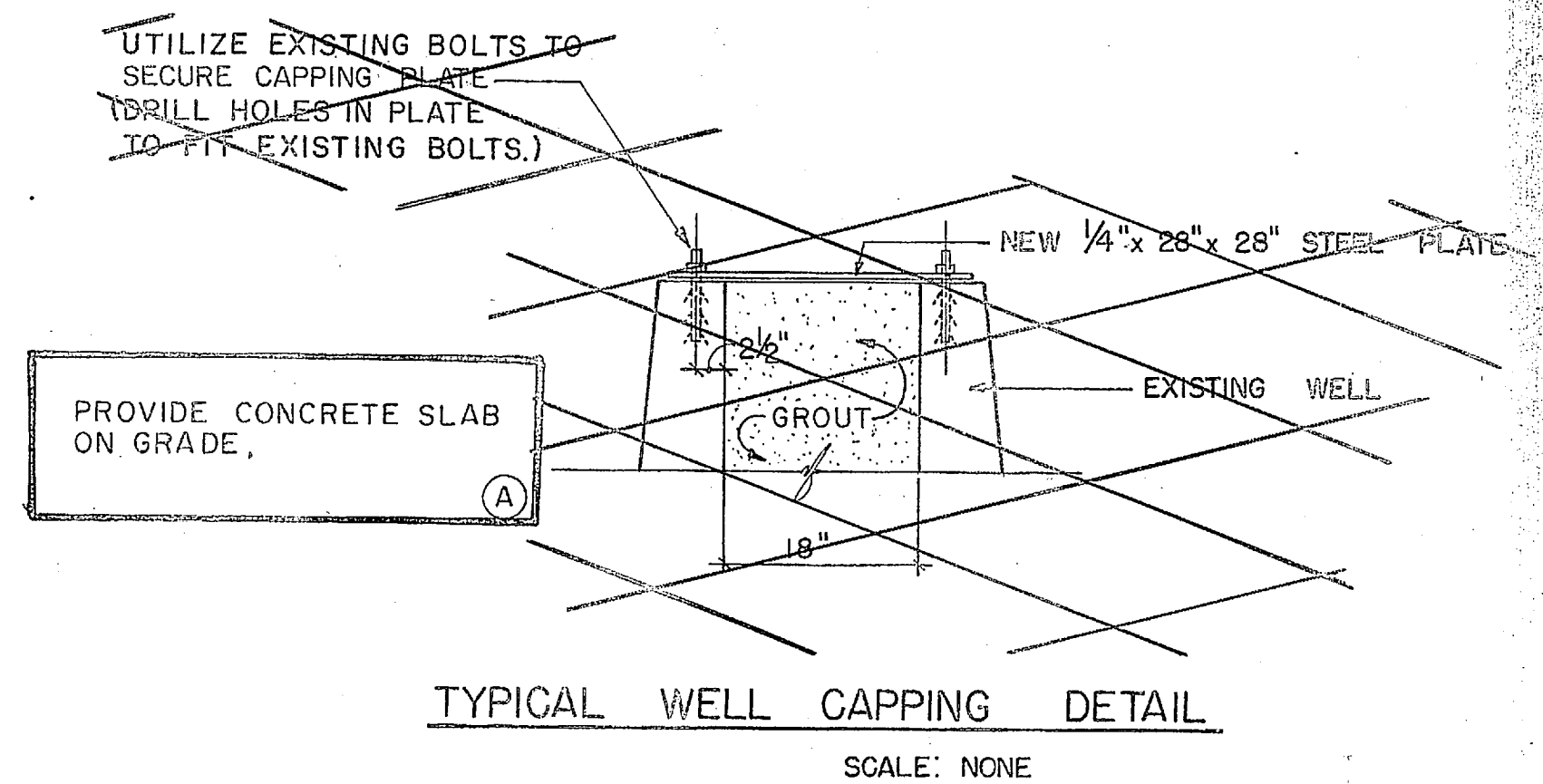
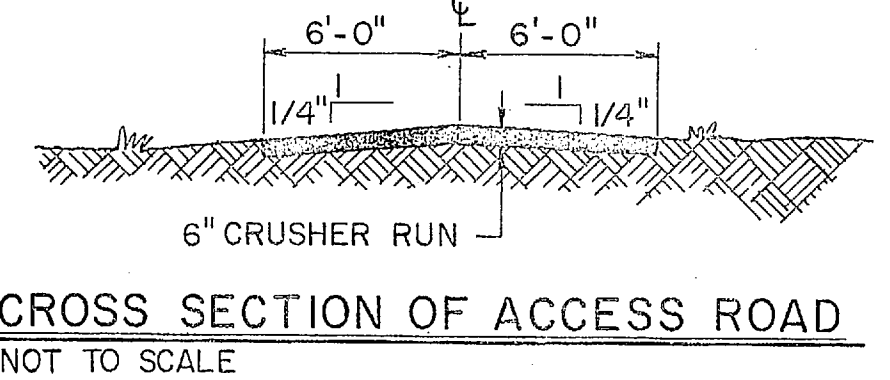
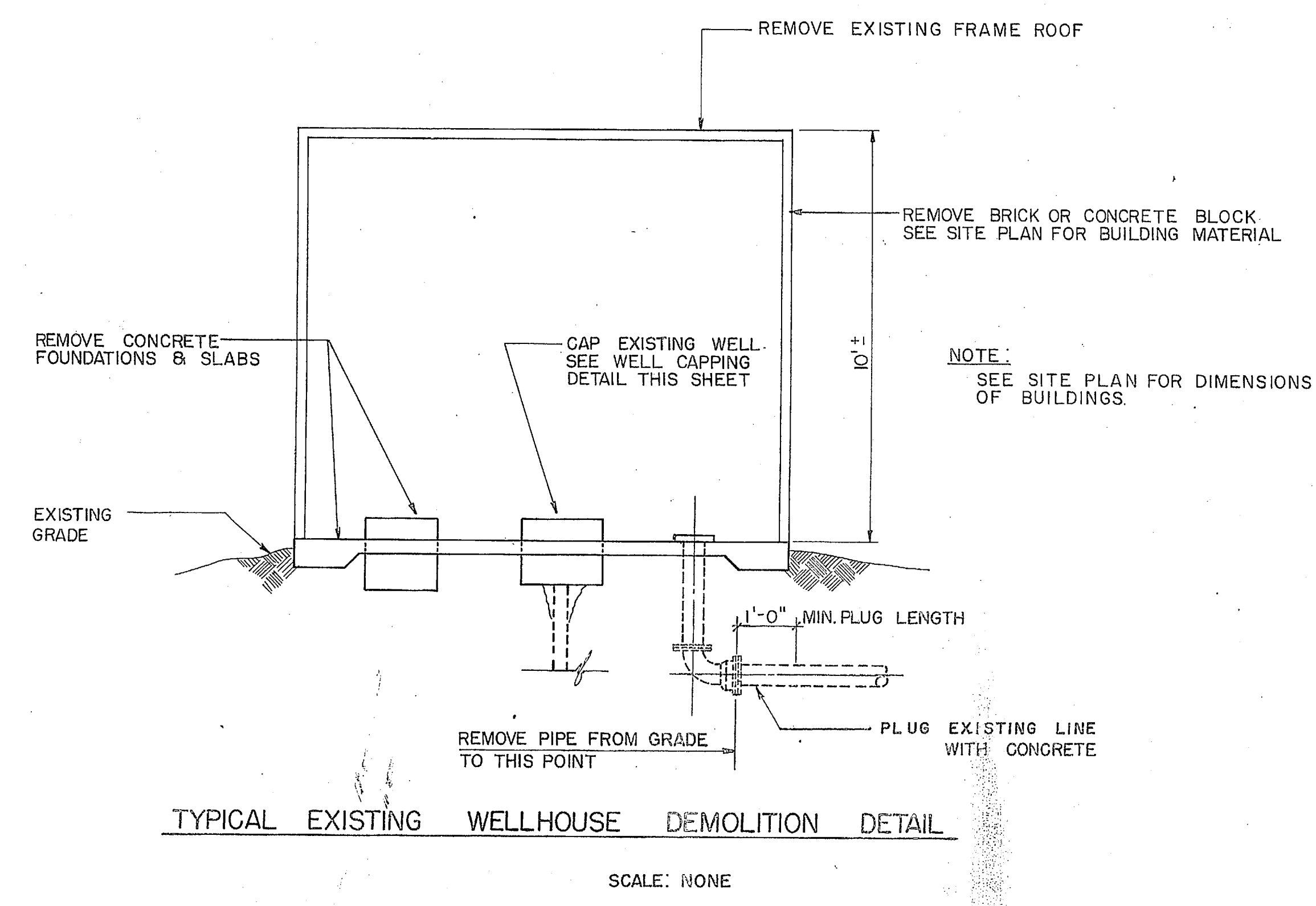


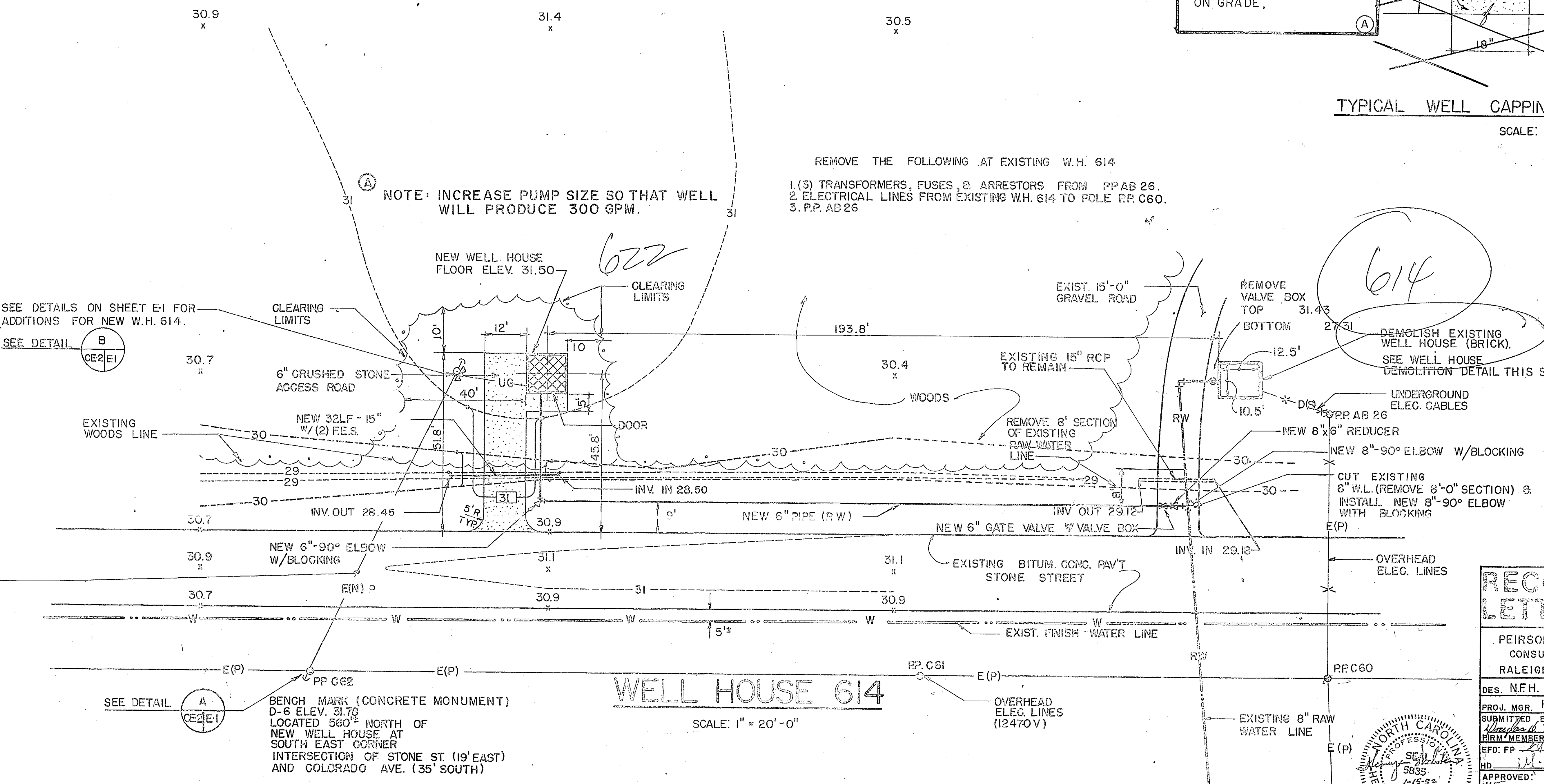
REVISIONS			
SYM	DESCRIPTION	DATE	APPROVED
(A)	REVISED AS-BUILT		



WELL HOUSE 611
SCALE: 1" = 20'-0"



TEMP (°F)	INIT. SAG (INCHES)	INIT. TENSION (LBS.)
30	4	1221
60	5.5	888
90	8	610



WELL HOUSE 614
SCALE: 1" = 20'-0"

- GENERAL NOTES:**
- FOR LEGEND SEE SHEET C-1.
 - ALL EXISTING PUMPS, MOTORS, ENGINES SHALL BE REMOVED BY THE GOVERNMENT AND SHALL REMAIN THE PROPERTY OF THE GOVERNMENT.
 - GRADE 6 VEGETATE THE EXISTING BENCH MARK DATUM TO MEL=0.00.
 - REMOVE ALL ELECTRICAL EQUIPMENT UNLESS OTHERWISE NOTED.
 - SEE LAHTDIV POLE PLATES IN SPECIFICATION & SHEET E-1 FOR POLE DESCRIPTIONS.
 - OVERHEAD CONDUCTOR INITIAL TENSION & SAG VALUES (SHTS. CE-2, CE-4, CE-5) BASED ON 100 ANS HARD DRAWN BARE COPPER WIRE IN MEDIUM LOADING DISTRICT.



RECORD DRAWING
LETTER DATED 07 MAR 64

CE-2

PEIRSON & WHITMAN, INC.
CONSULTING ENGINEERS
RALEIGH, NORTH CAROLINA

DES. N.F.H. DR. G.D.J. CHK. N.F.H.
SUBMITTED BY: DATE: 7-21-64
REVISED BY: DATE: 7-21-64
REVISED BY: DATE: 7-21-64

APPROVED: DATE: 7-21-64
OFFICER IN CHARGE: 4064851

WELL HOUSE 611 & 614 SITE PLAN
SCALE: NOTED (SPEC. CE-2, CE-4, CE-5)
SHEET 2 OF 9

