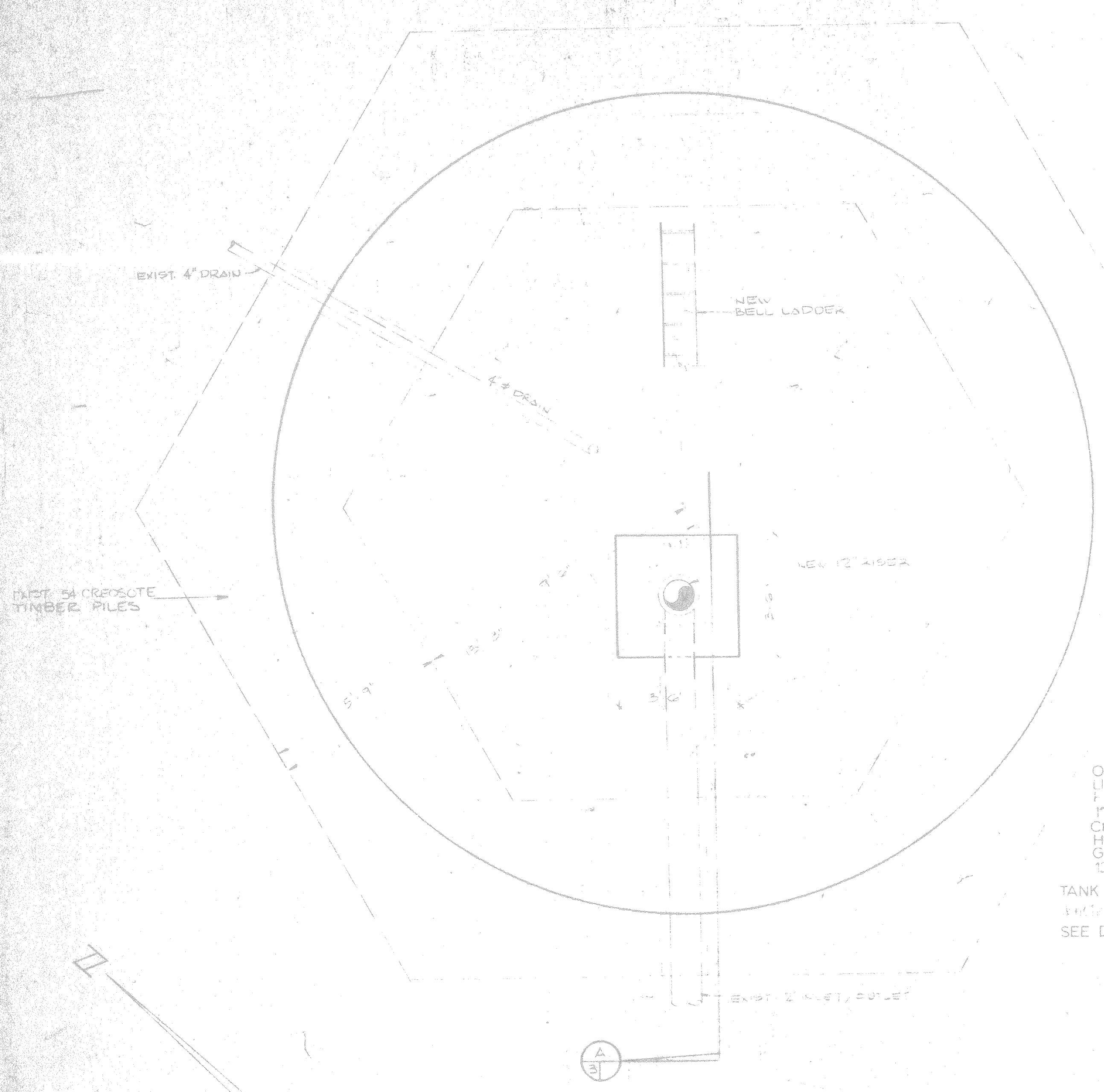
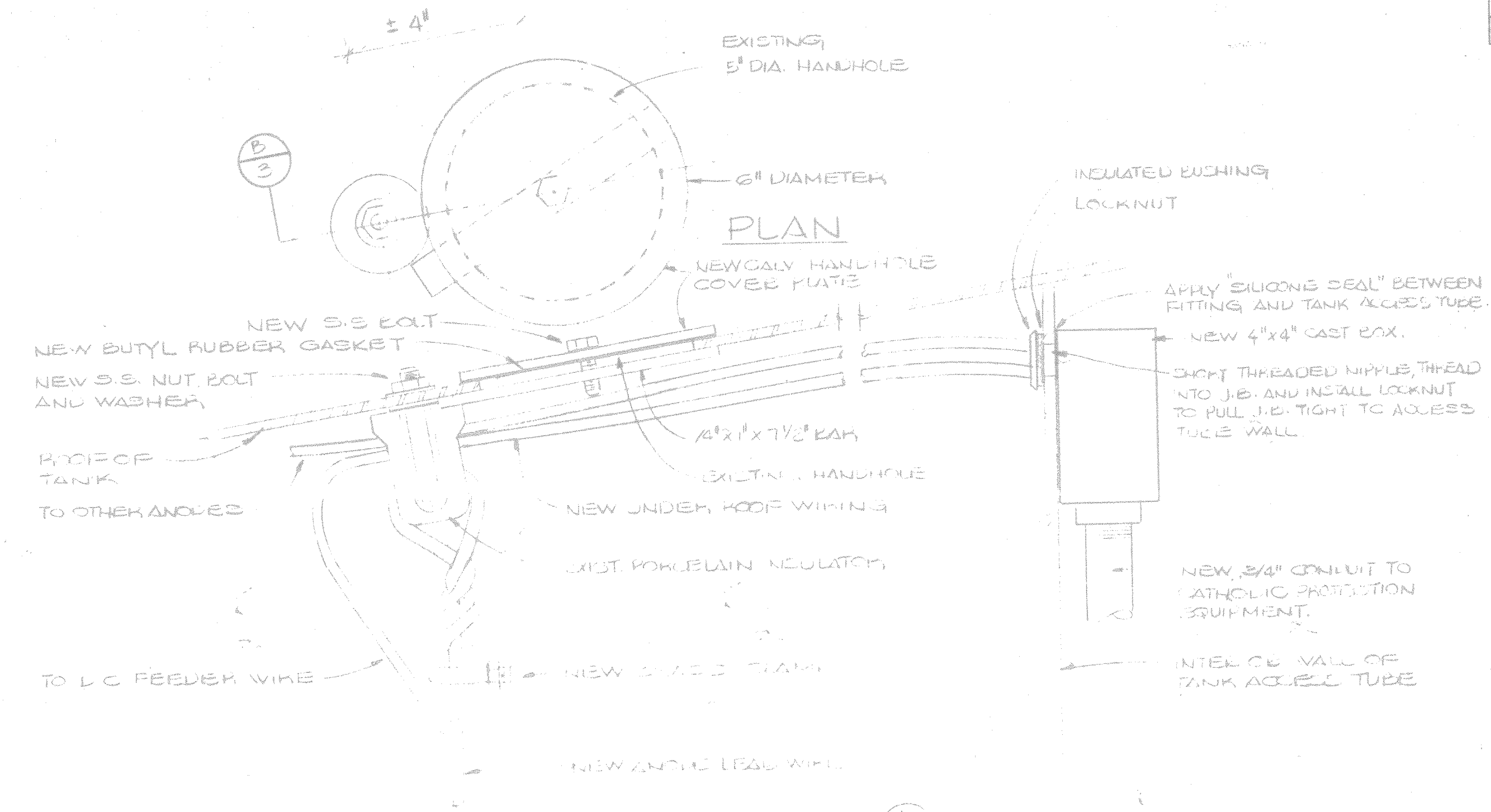


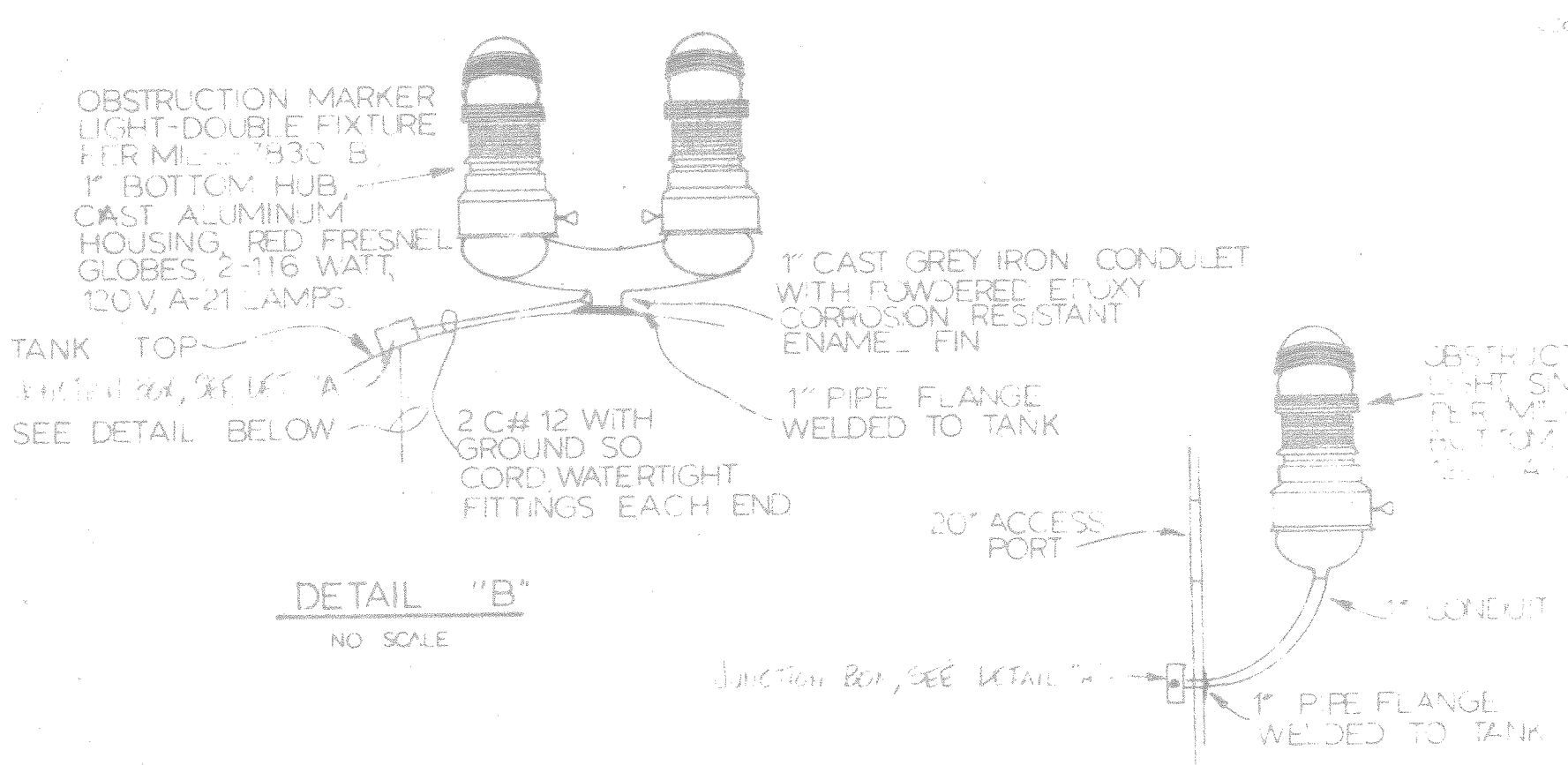
REVISIONS	
SYM	DESCRIPTION
(A)	REVISED AS BUILT



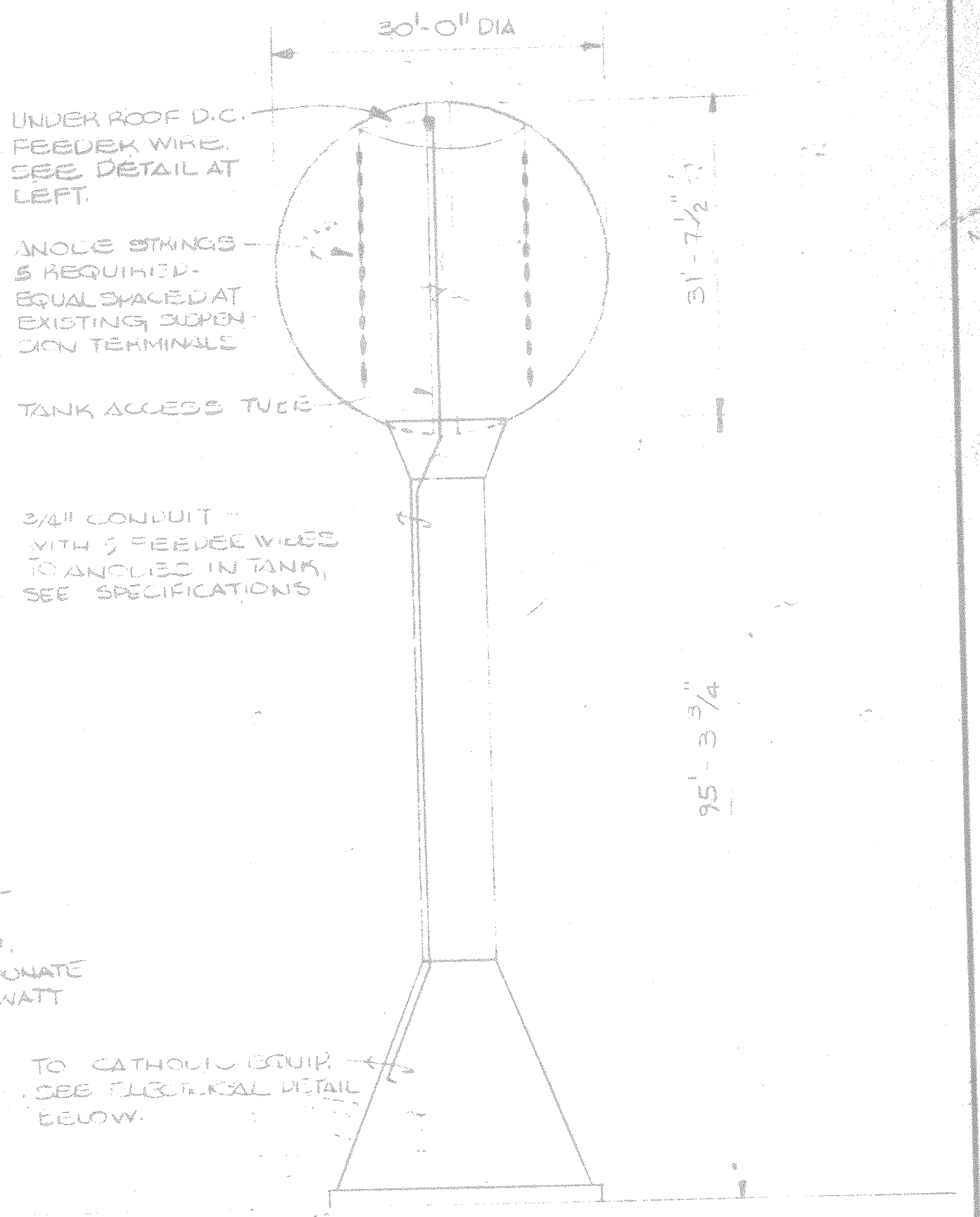
FOUNDATION PLAN  
1/2" = 1'-0"



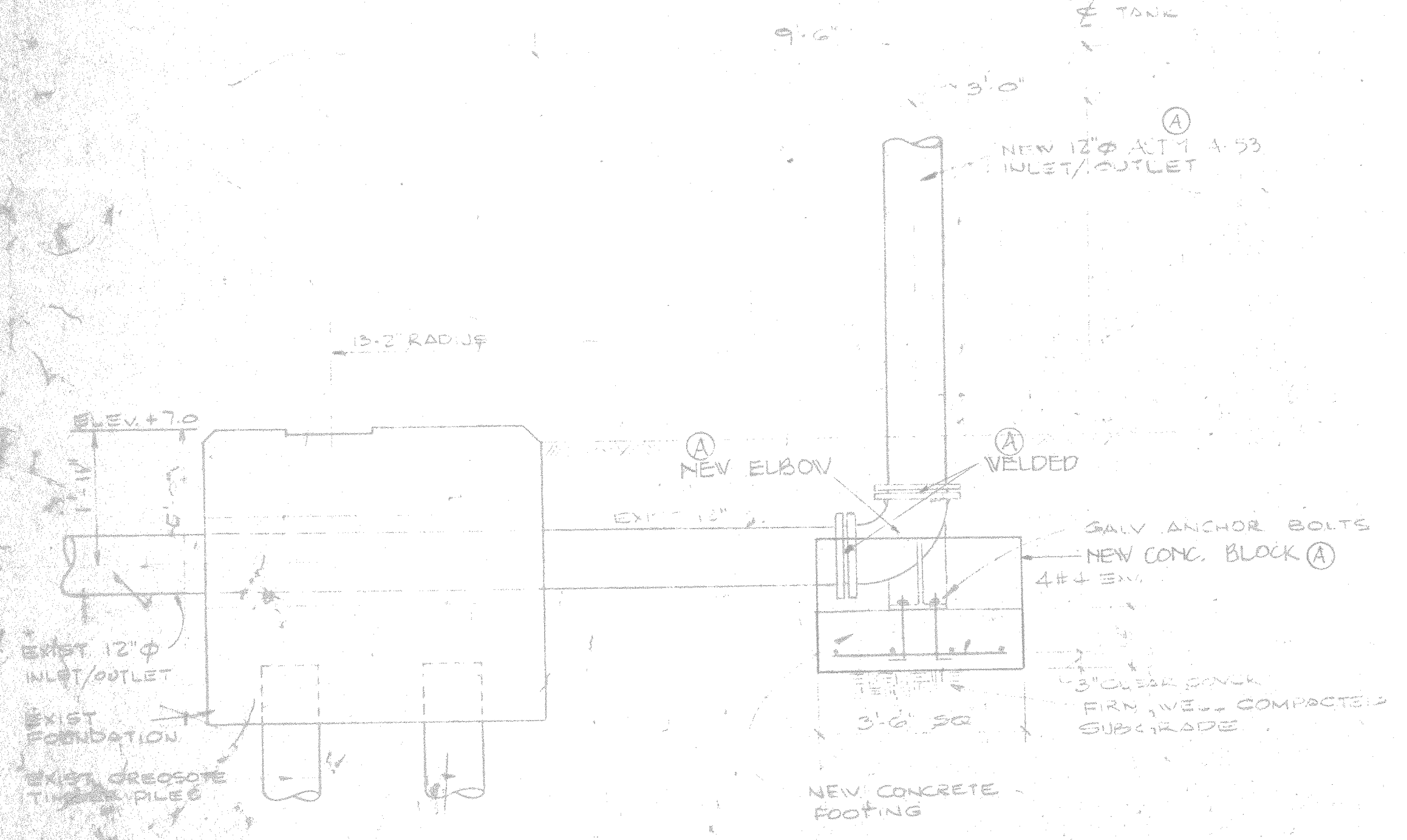
HANDHOLE SUSPENSION DETAIL  
NO SCALE



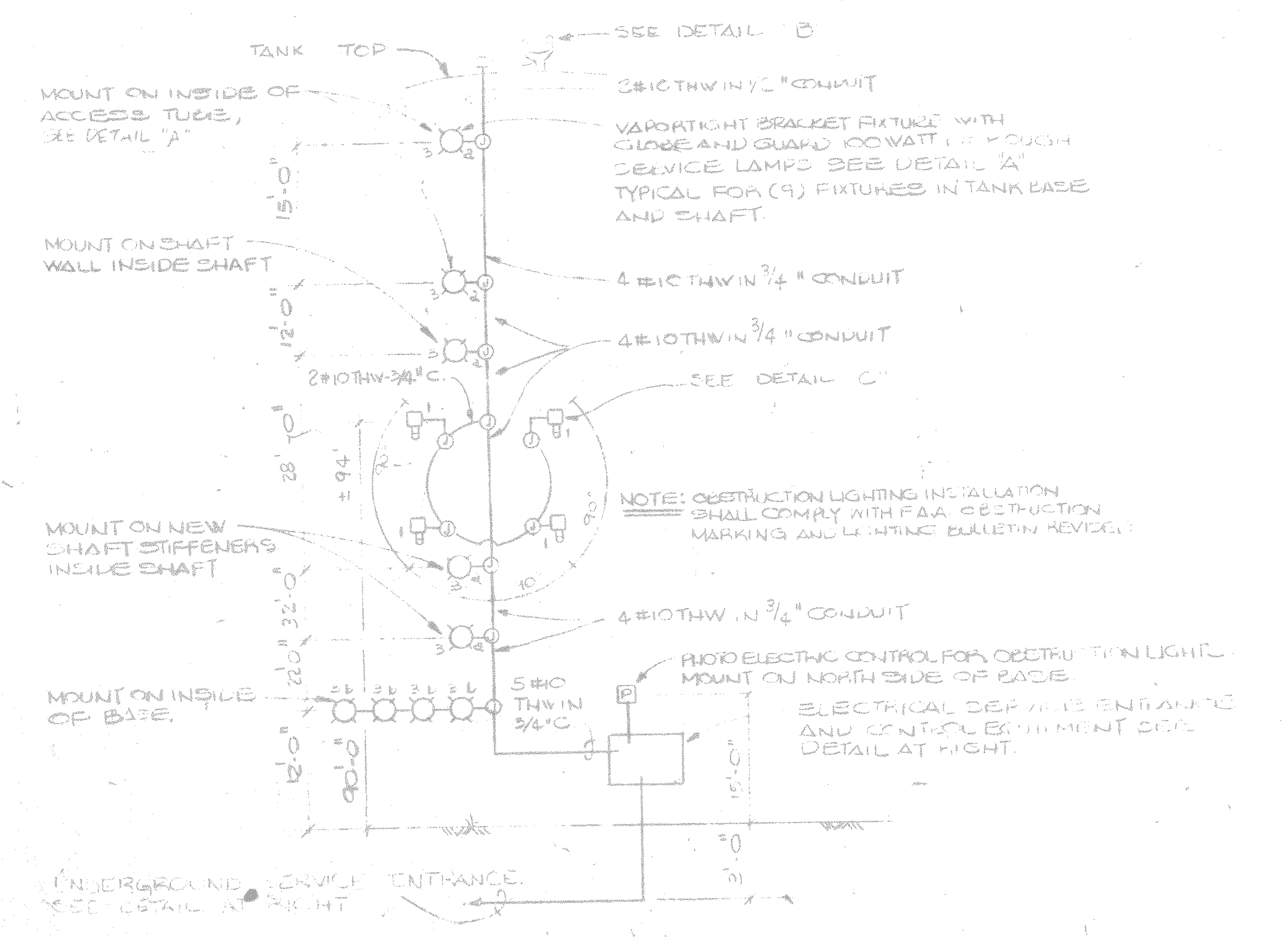
DETAIL "B" NO SCALE  
DETAIL "C" NO SCALE



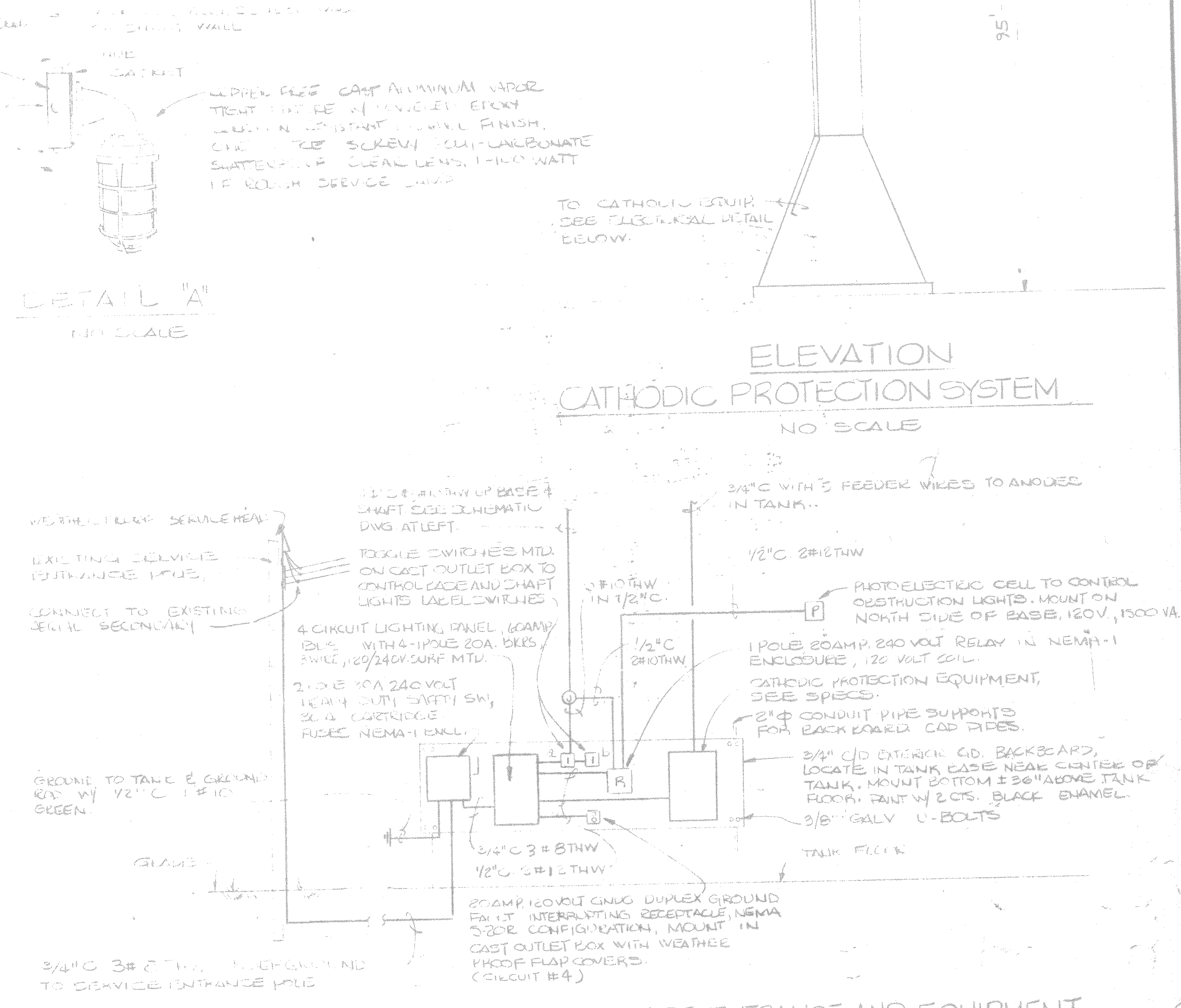
ELEVATION CATHODIC PROTECTION SYSTEM  
NO SCALE



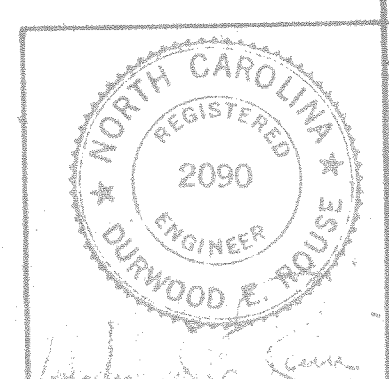
SECTION A  
1/2" = 1'-0"



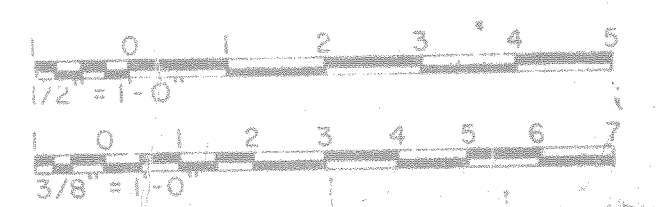
SCHEMATIC WIRING FOR OBSTRUCTION SHAFT AND BACE LIGHTING  
NO SCALE



DETAIL - ELECTRICAL SERVICE ENTRANCE AND EQUIPMENT  
NO SCALE



HENRY VON OESSEN & ASSOCIATES CONSULTING ENGINEERS WILMINGTON, N. C.		DEPARTMENT OF THE NAVY NAVAL FACILITIES ENGINEERING COMMAND ATLANTIC DIVISION NAVAL STATION NORFOLK, VA.	
DESIGNER: H. V. O. DATE: 8/17/77		PROJECT: REPAIR OVERHEAD WATERTANK S-BA-108 CAMP LEJEUNE, N. C.	
CHECKED: J. W. G. DATE: 8/17/77		DETAILS	
APPROVED: [Signature] DATE: 8/17/77		SCALE: AS SHOWN	
PROJECT NO. 4950812		SHEET 3 OF 3	

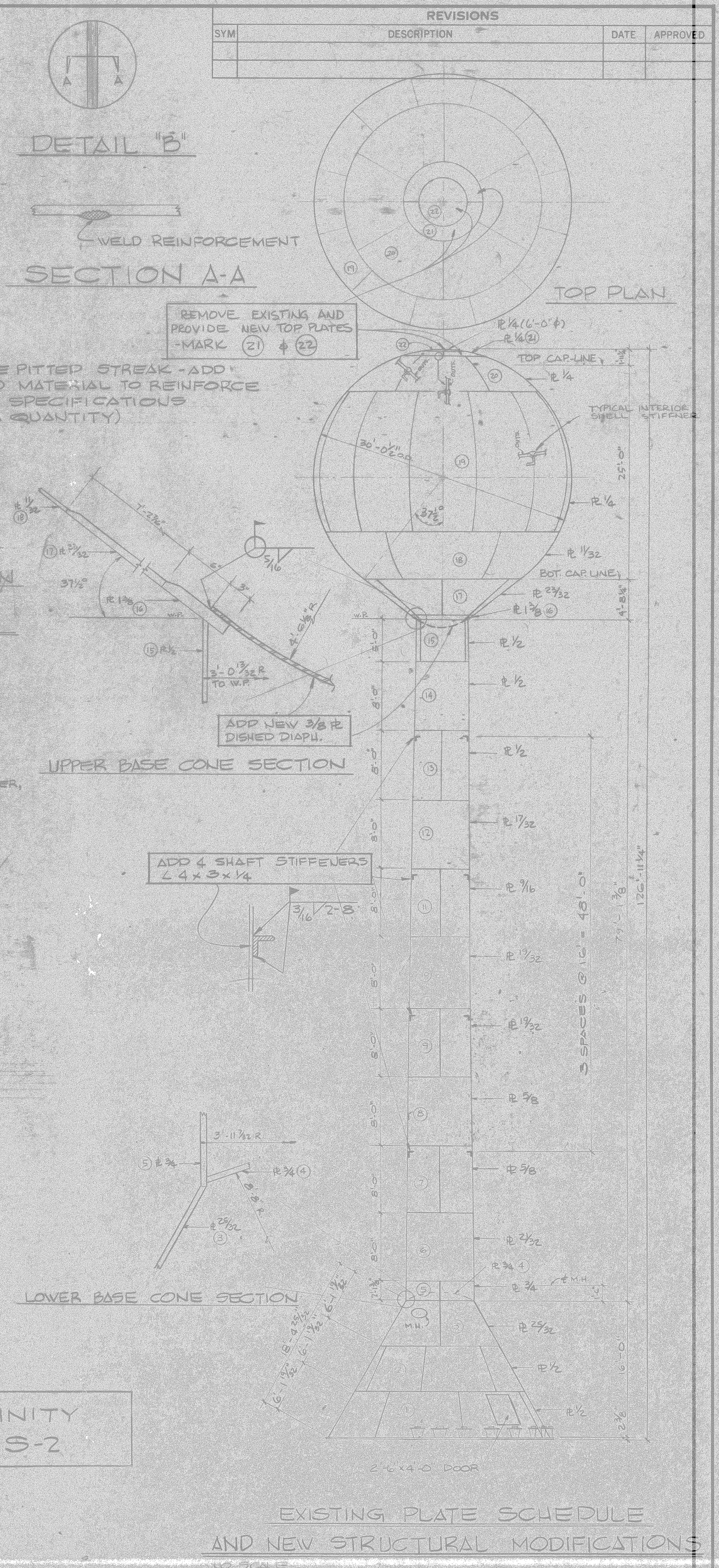
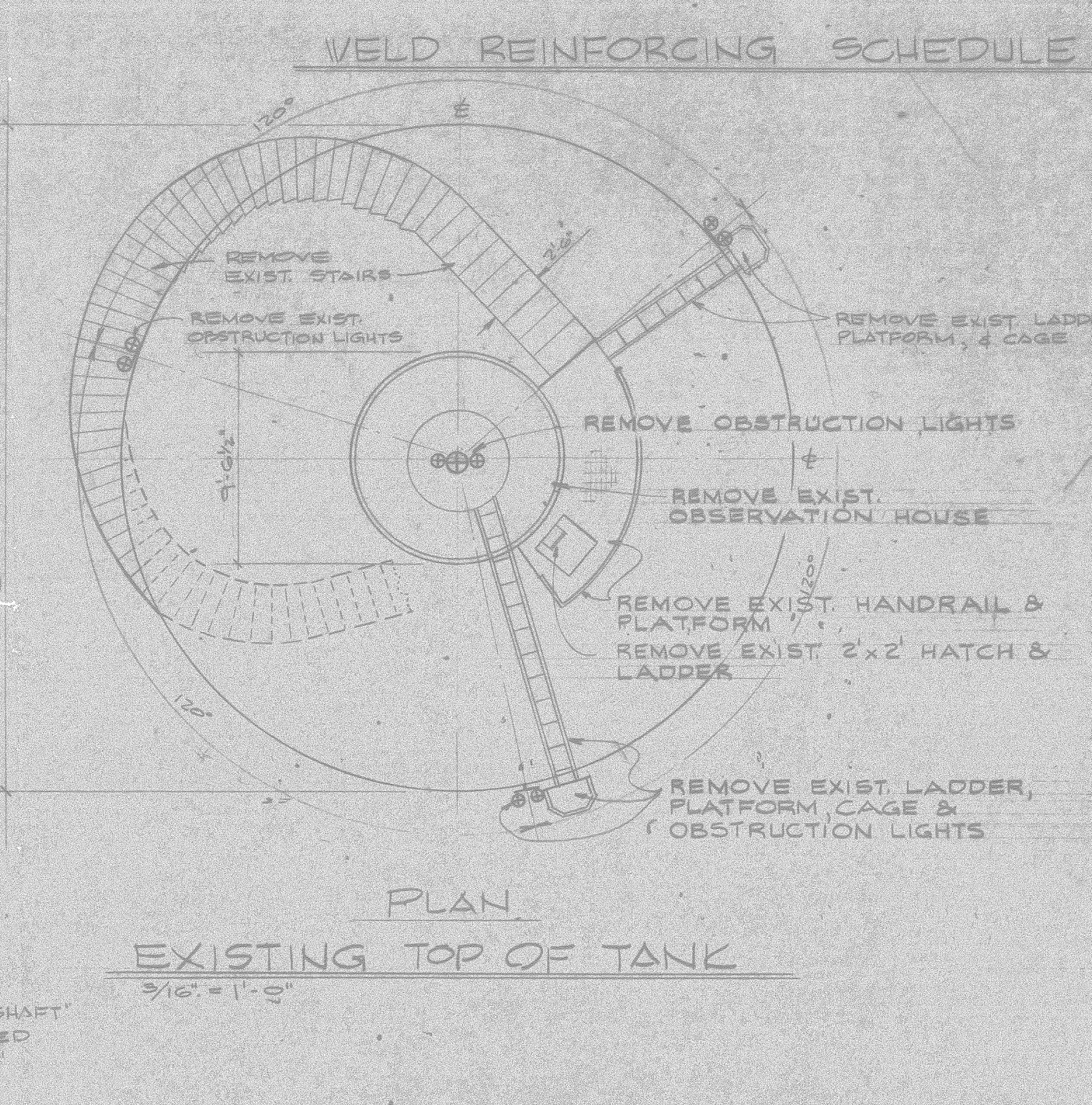
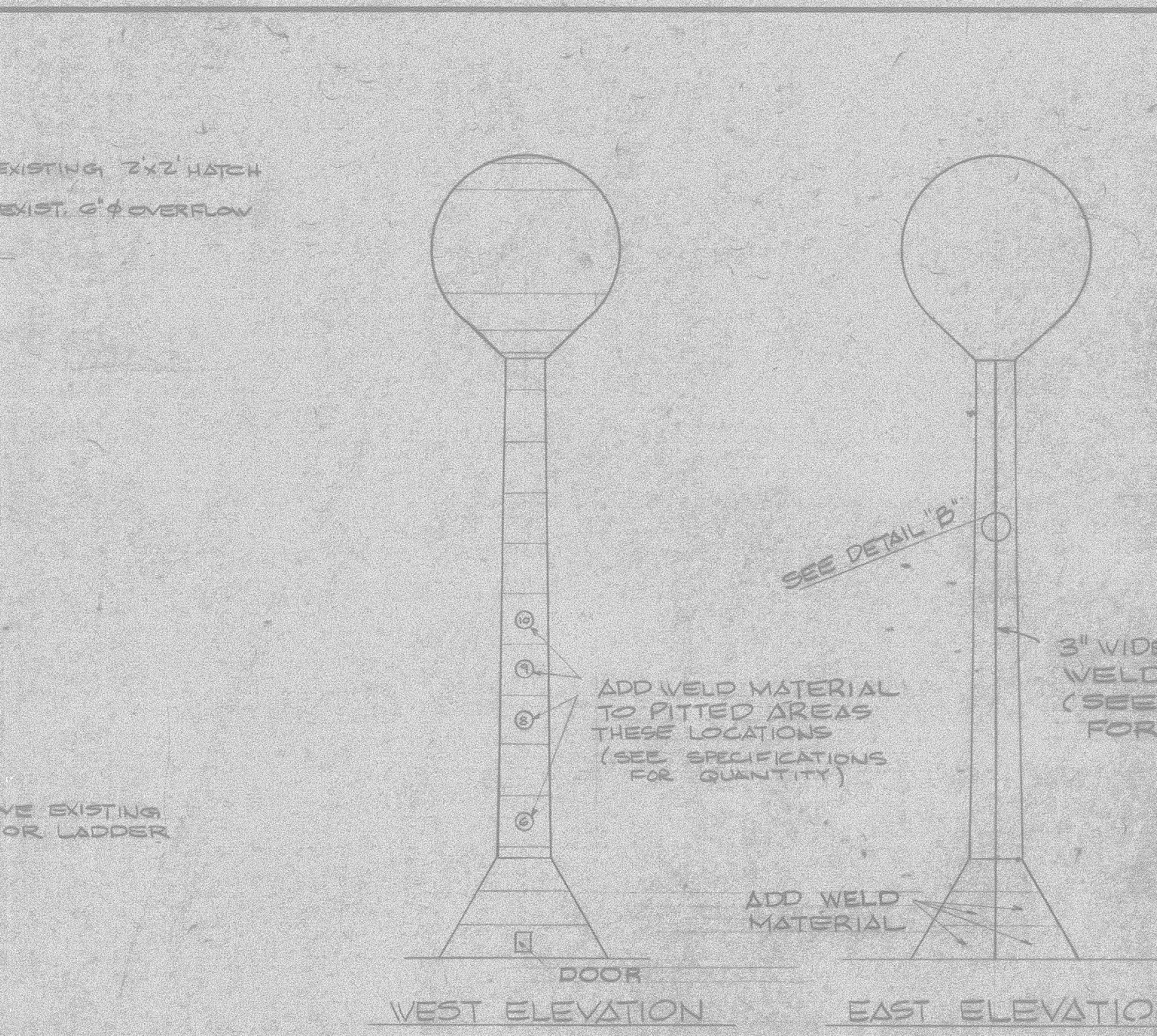
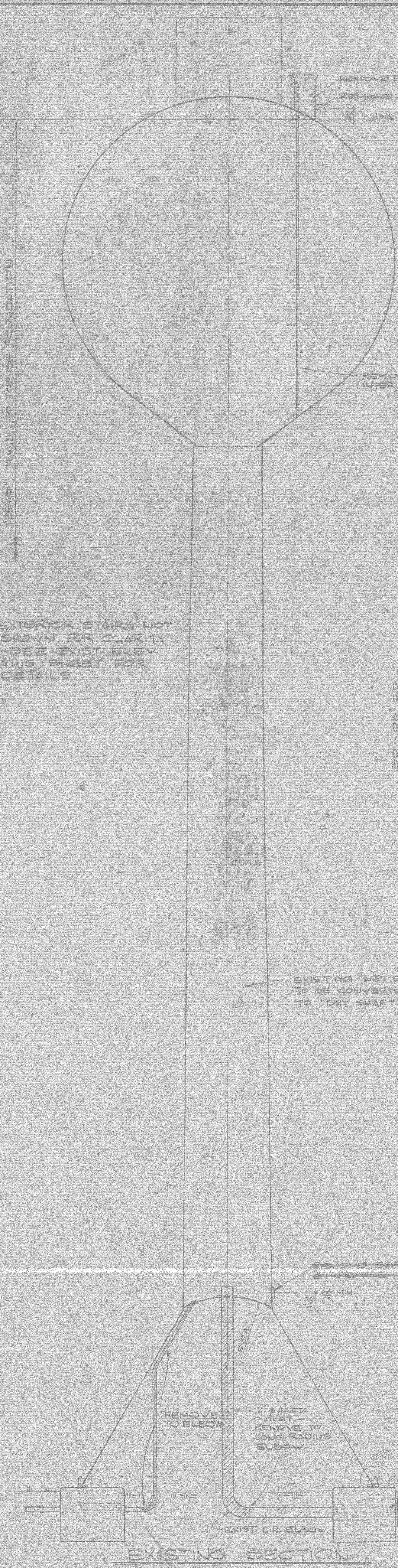
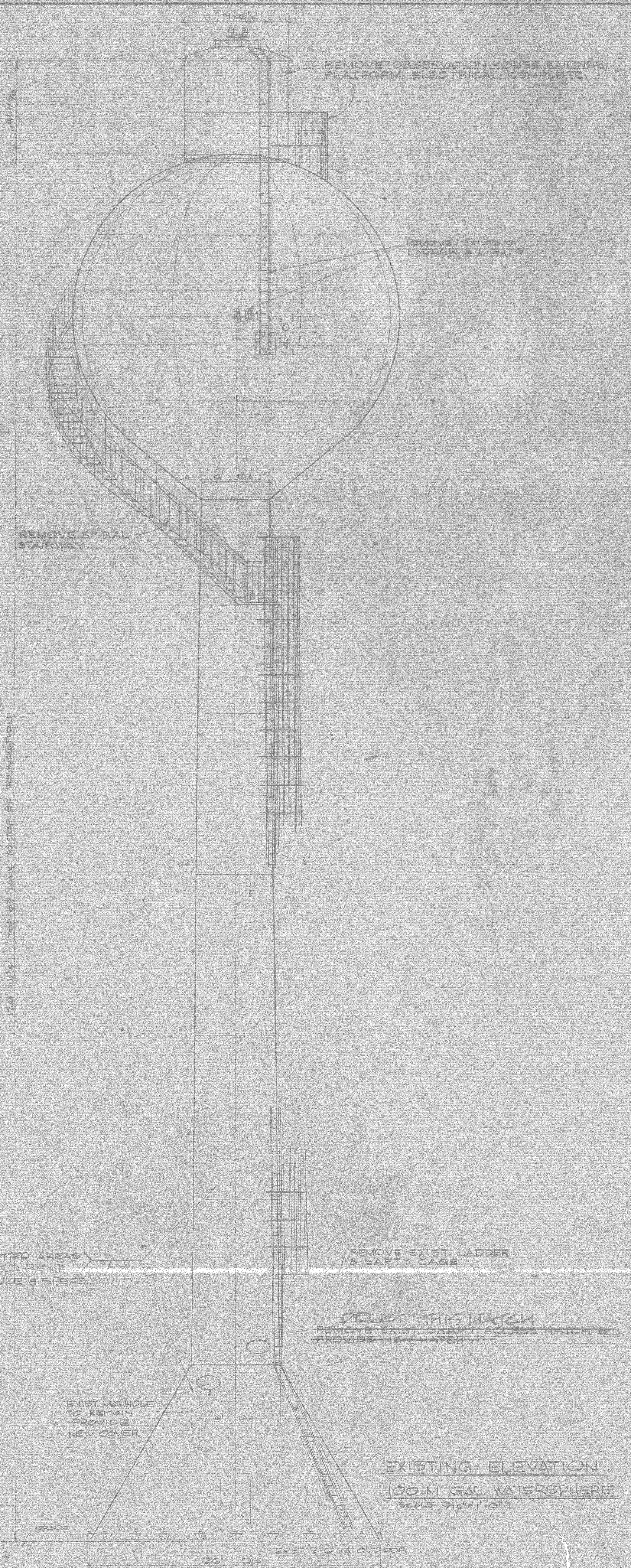




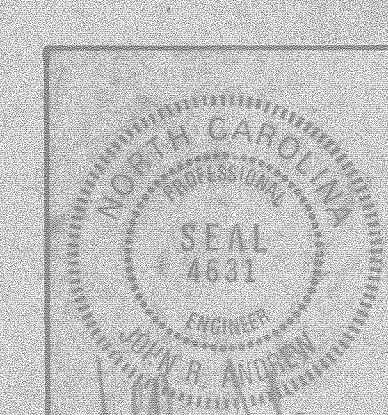




REVISIONS			
SYM	DESCRIPTION	DATE	APPROVED



FOR LOCATION PLAN & VICINITY MAP SEE SHEET N: S-2



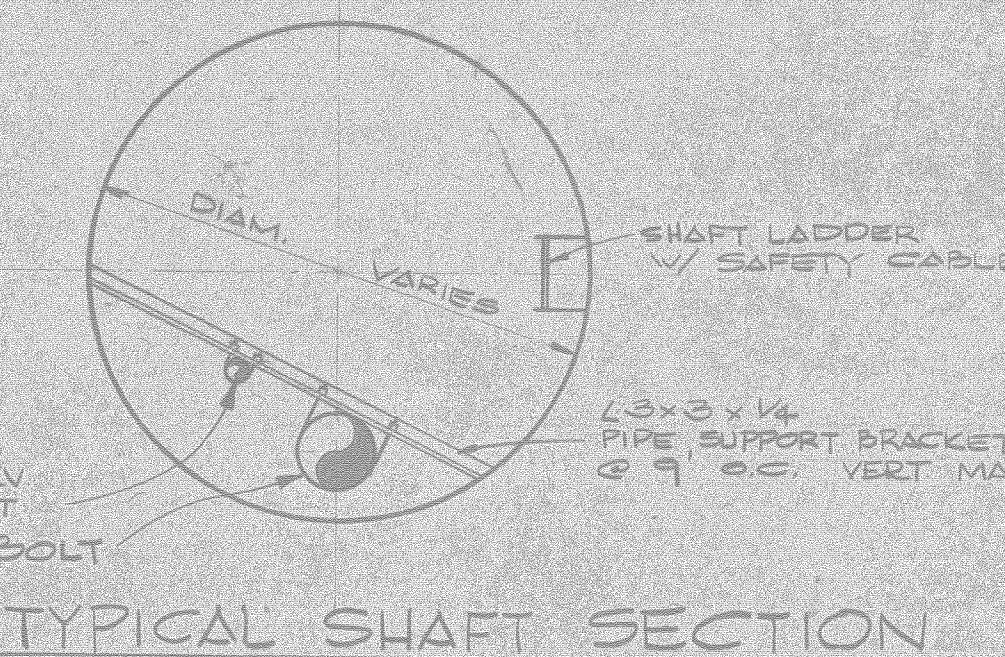
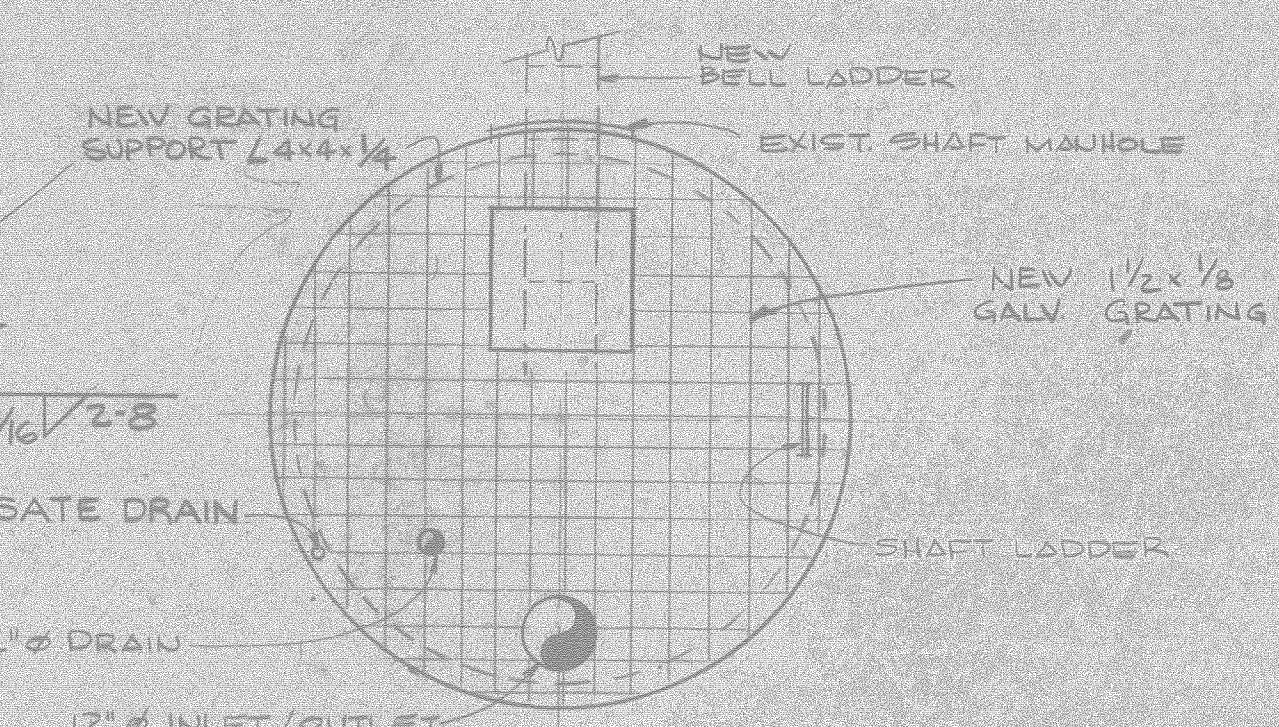
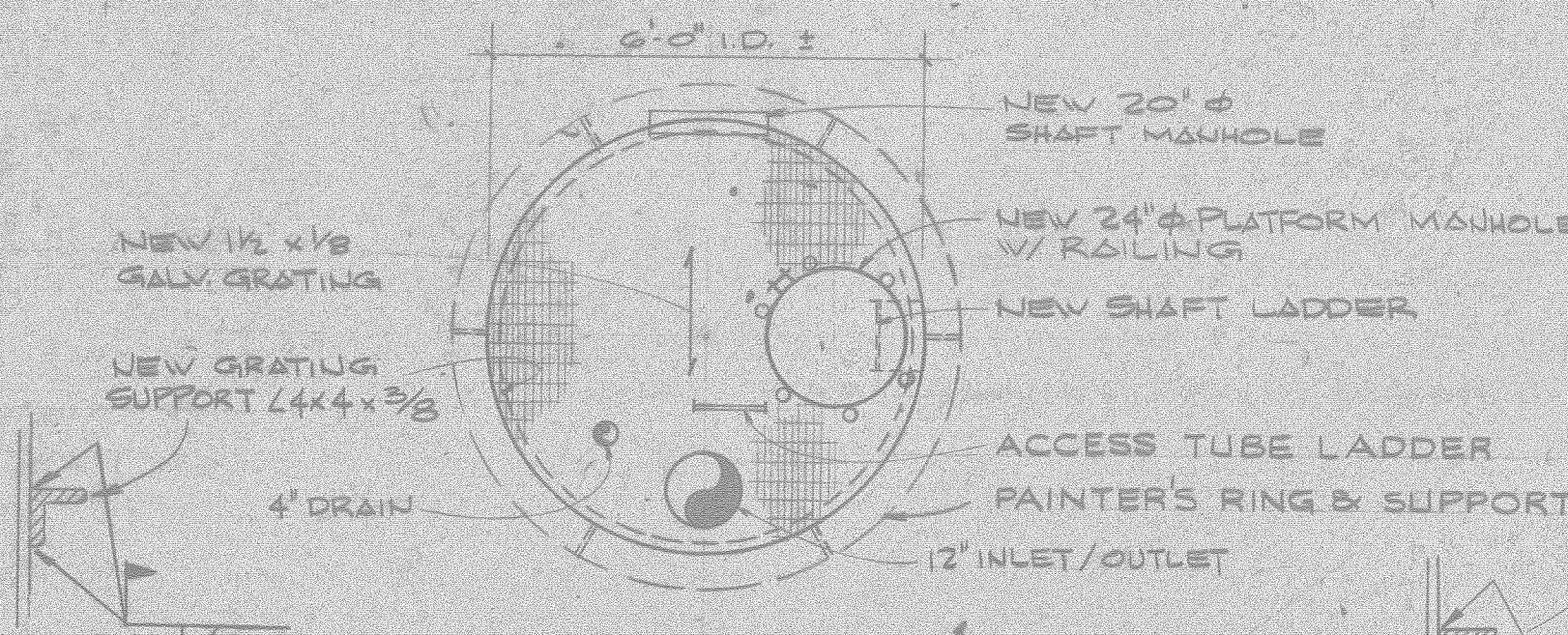
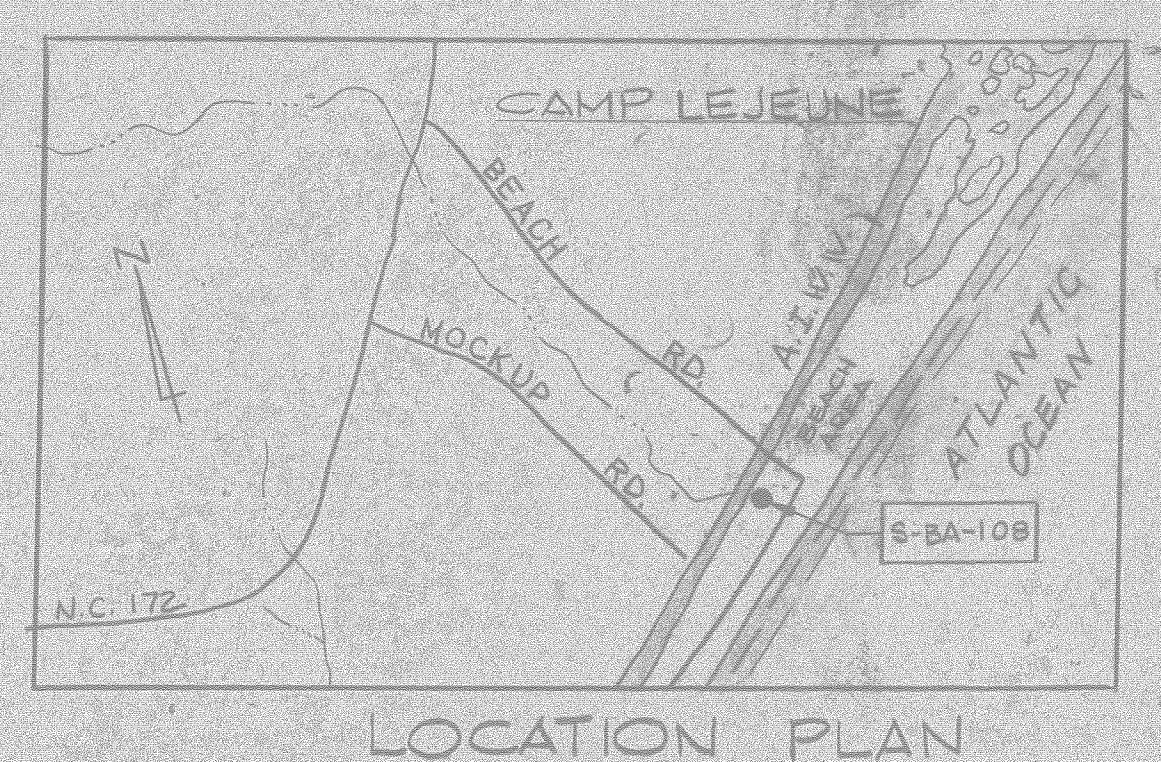
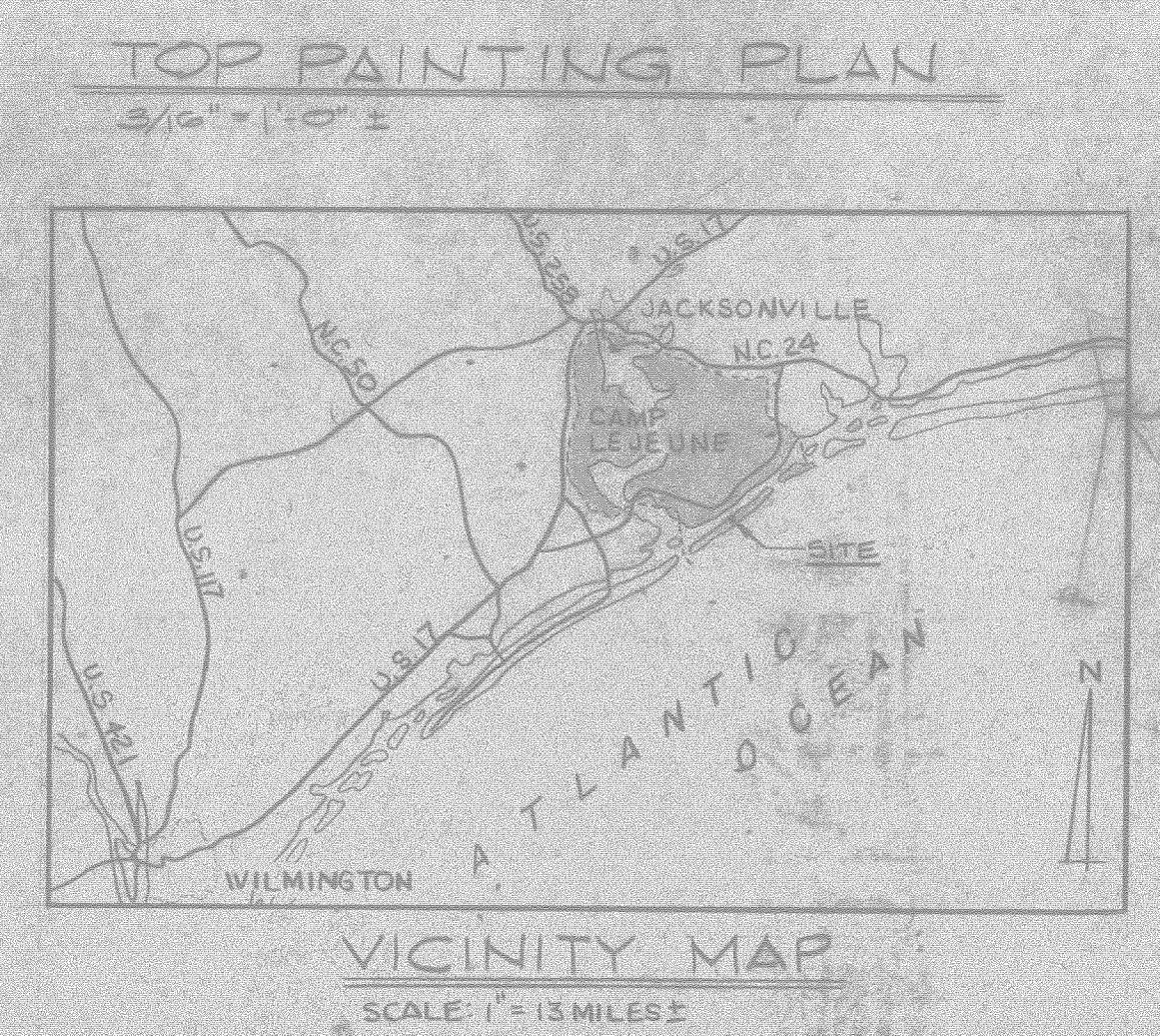
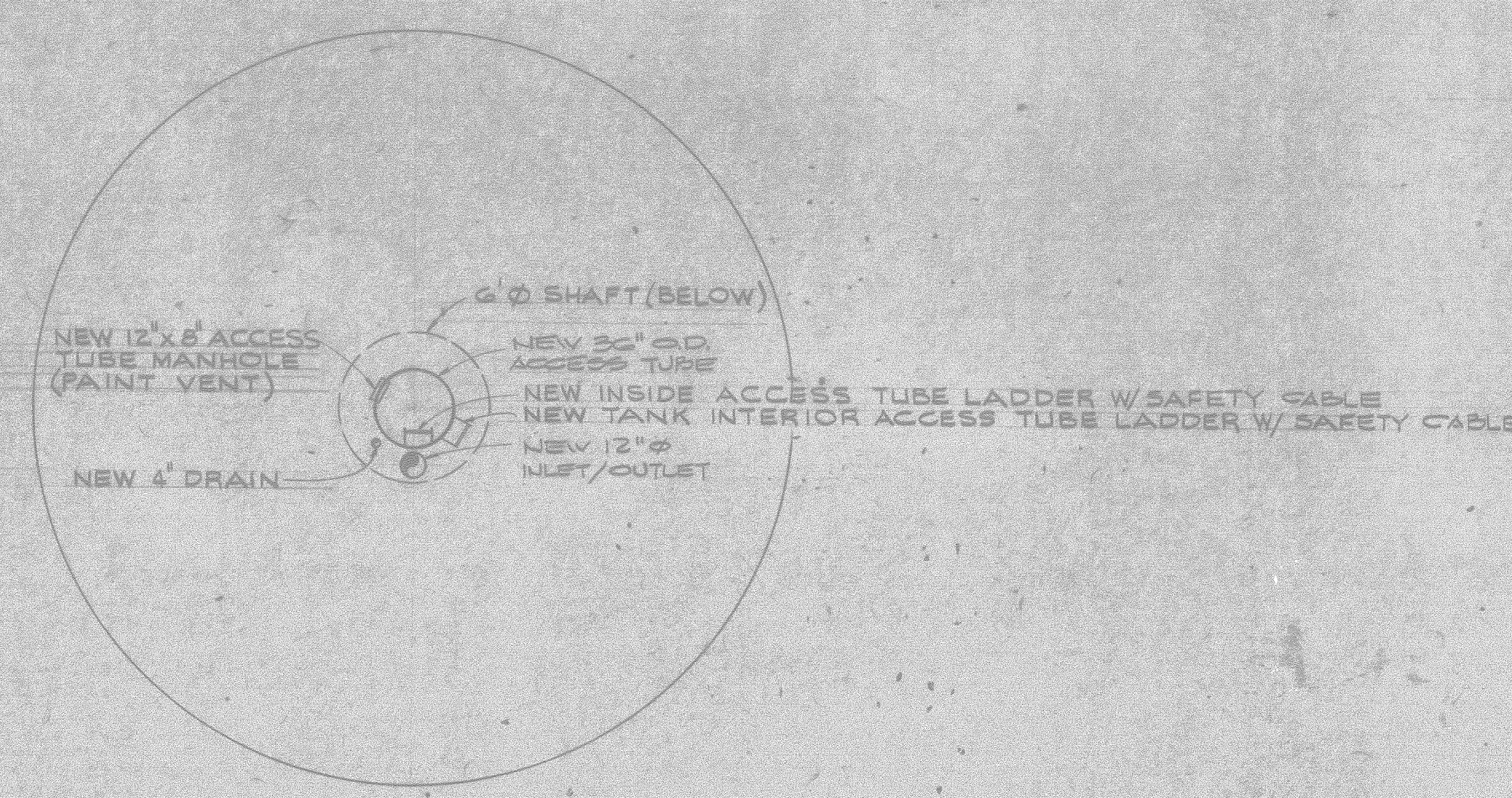
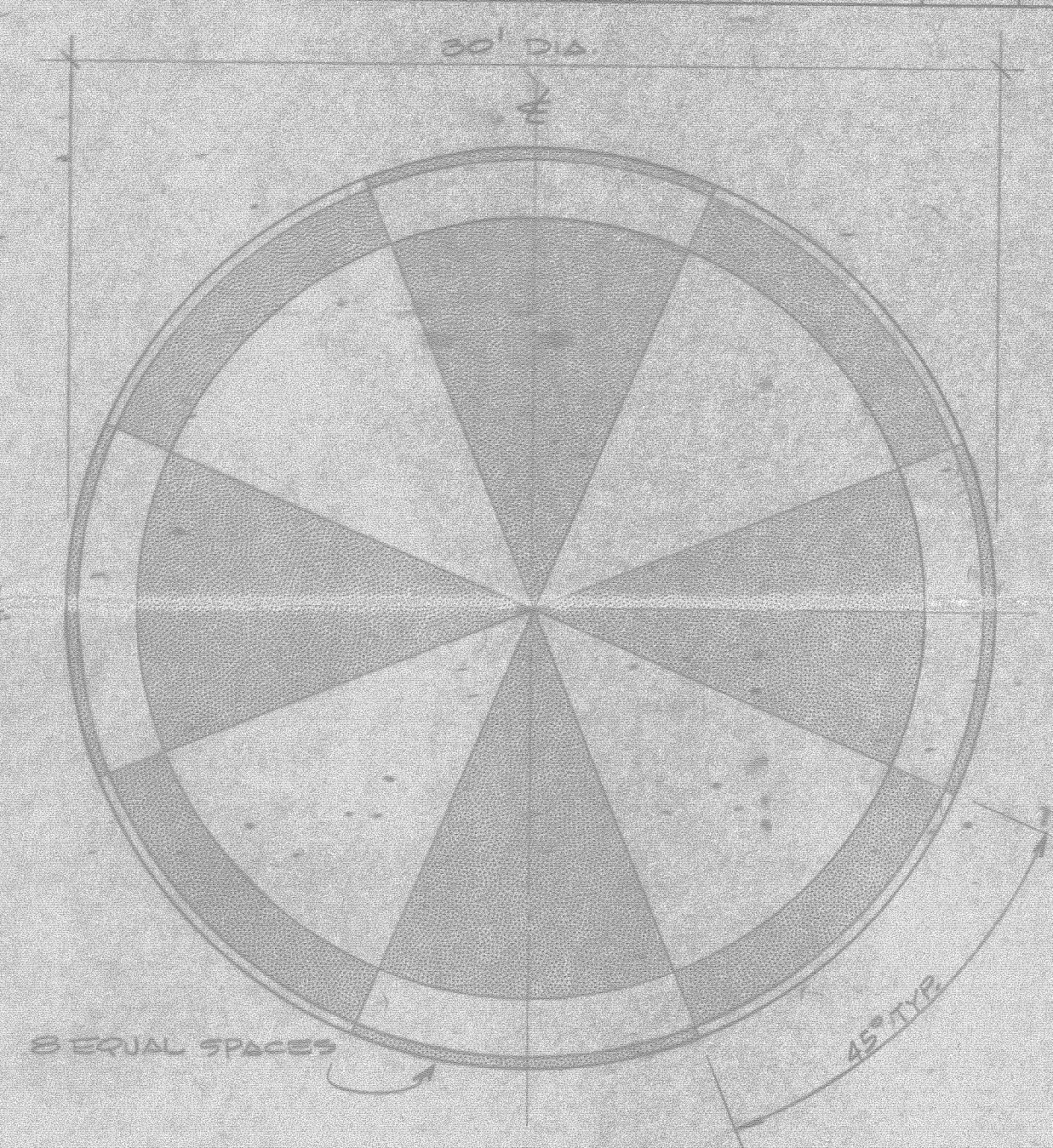
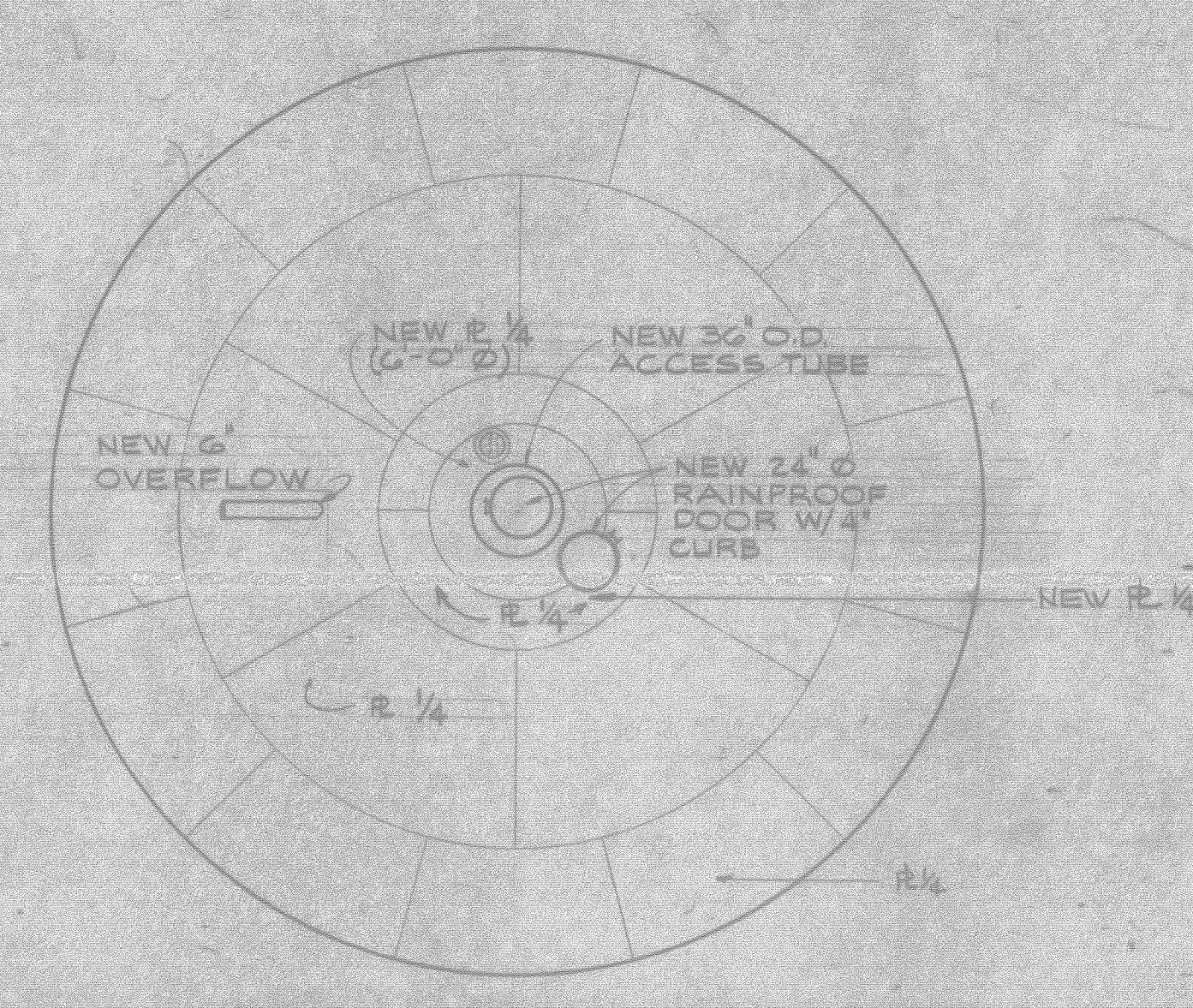
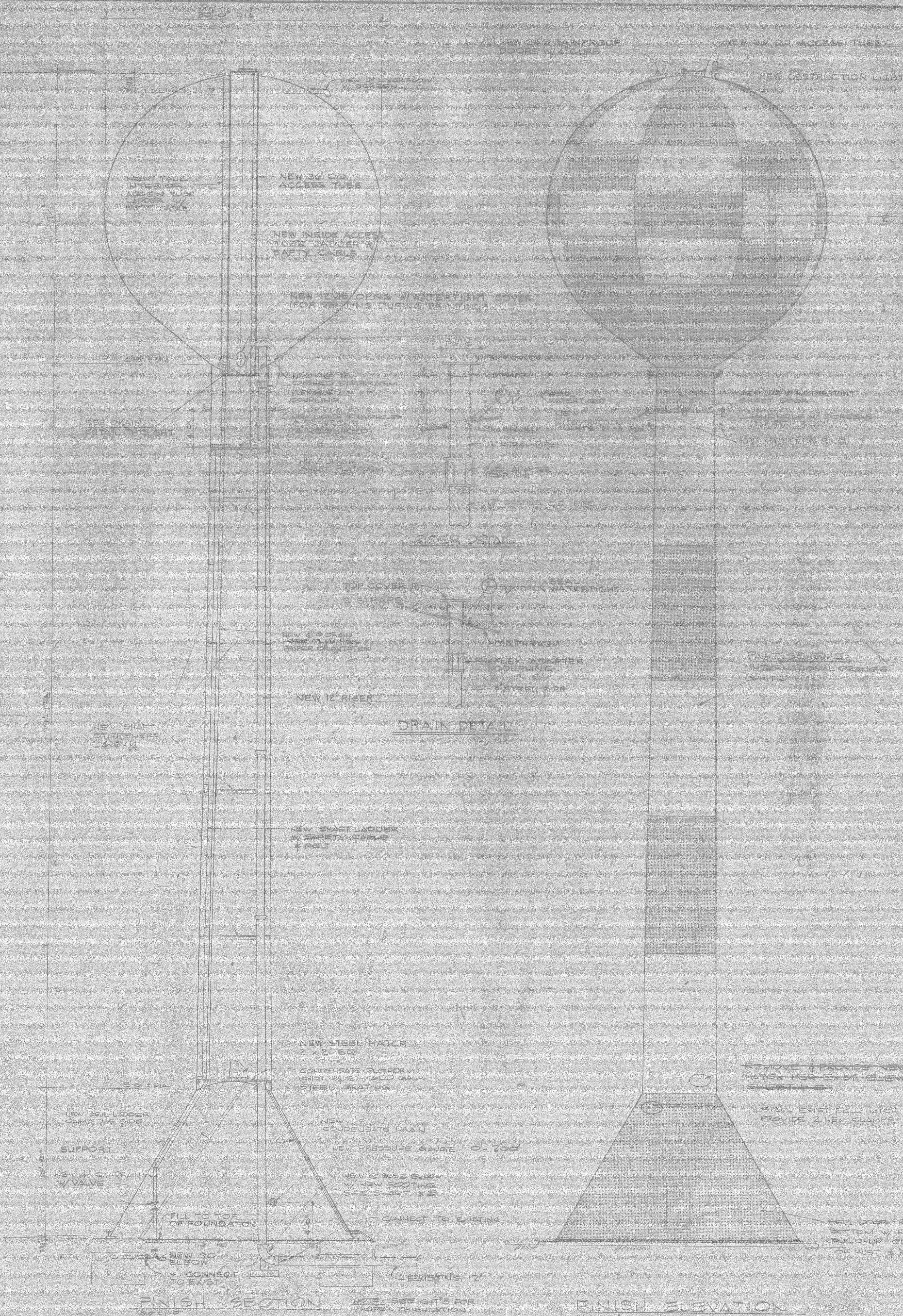
HENRY VON OESSEN & ASSOCIATES CONSULTING ENGINEERS WILMINGTON, N.C.		DEPARTMENT OF THE NAVY NAVAL FACILITIES ENGINEERING COMMAND ATLANTIC DIVISION NAVAL STATION NORFOLK, VA	
DES. J.R.A.	DR. R.V.B.	CHK. J.R.B.	
PREP. M.W.J.	CH. ENGR. J.R.B.		
DATE 16 AUG 79			
PRINCIPAL			
REPAIR OVERHEAD WATERTANK S-BA-108 CAMP LEJEUNE, N.C.		EXISTING ELEVATION & DETAILS	
APPROVED: [Signature]	DATE: 2/7/79	SIZE: F	CODE IDENT. NO.: 4050810
OFFICER IN CHARGE			
SCALE: AS SHOWN	SPCL: 05-79-9262		SHEET 1 OF 3



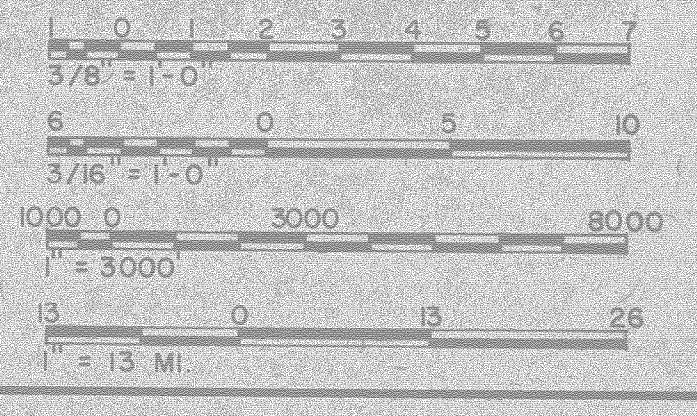




REVISIONS			
SYM	DESCRIPTION	DATE	APPROVED



<b>S-2</b> HENRY VON DEER & ASSOCIATES CONSULTING ENGINEERS WILMINGTON, N. C.		DEPARTMENT OF THE NAVY NAVAL FACILITIES ENGINEERING COMMAND ATLANTIC DIVISION NORFOLK, VA.	
		<b>REPAIR OVERHEAD WATERTANK</b> <b>S-BA-108</b> CAMP LEJEUNE, N. C.	
DES. JRA PAID. JRB TITLED. JRB DATE. 16 AUG 79	CHK. JRB DATE.	<b>FINISH ELEVATION &amp; DETAILS</b>	
APPROVED: [Signature] DATE: 8/17/79	OFFICE IN CHARGE: [Signature] DATE: 8/17/79	SIZE: F CODE IDENT. NO.: 4050811	NAVAC DRAWING NO.: N62470-79-B-9262 SHEET 2 OF 3



NOTE: SEE SH'TS FOR PROPER ORIENTATION

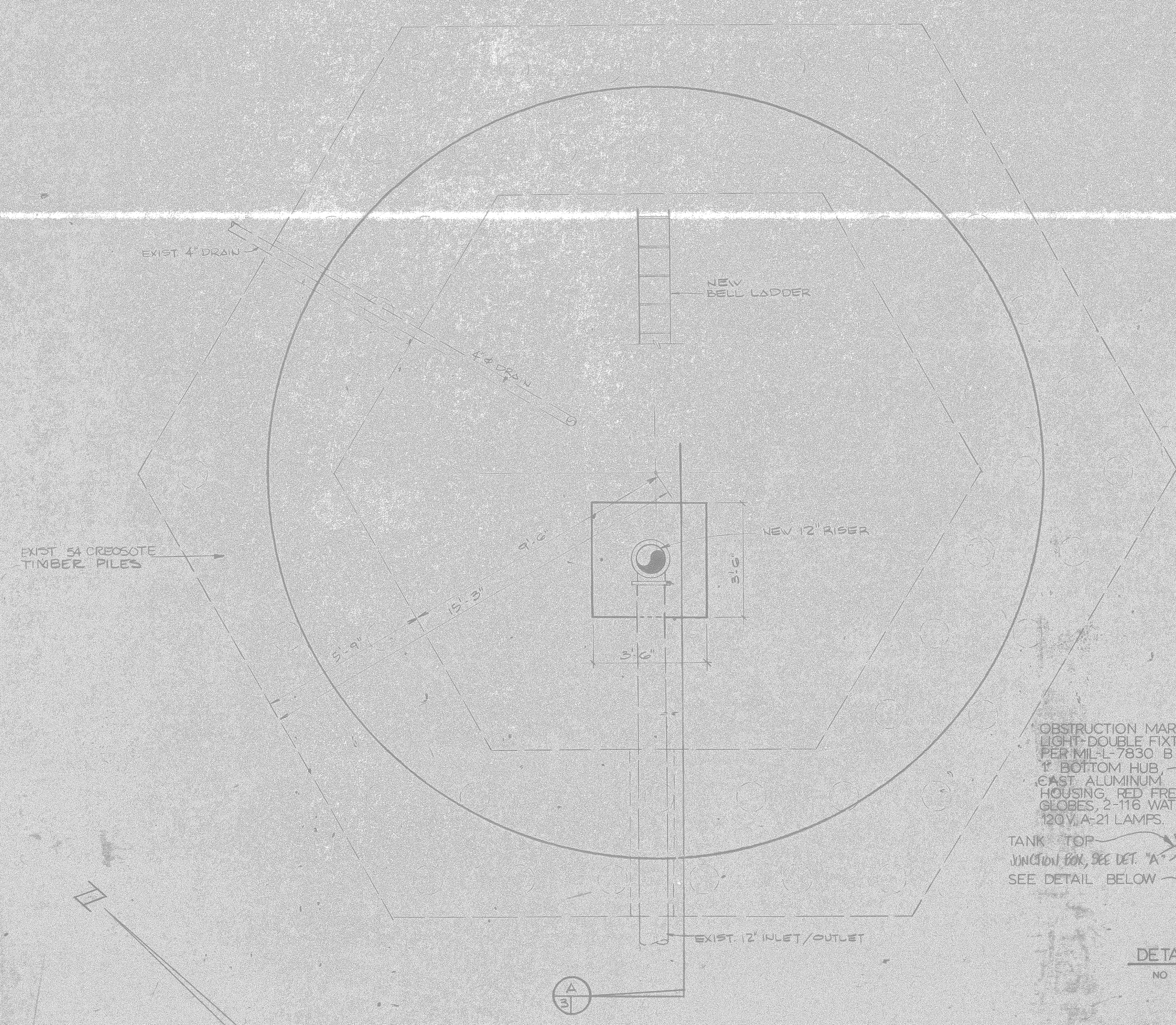
BELL DOOR - REINFORCE BOTTOM W/ NEW WELD BUILD-UP. CLEAN HANDLE OF RUST & REWELD.



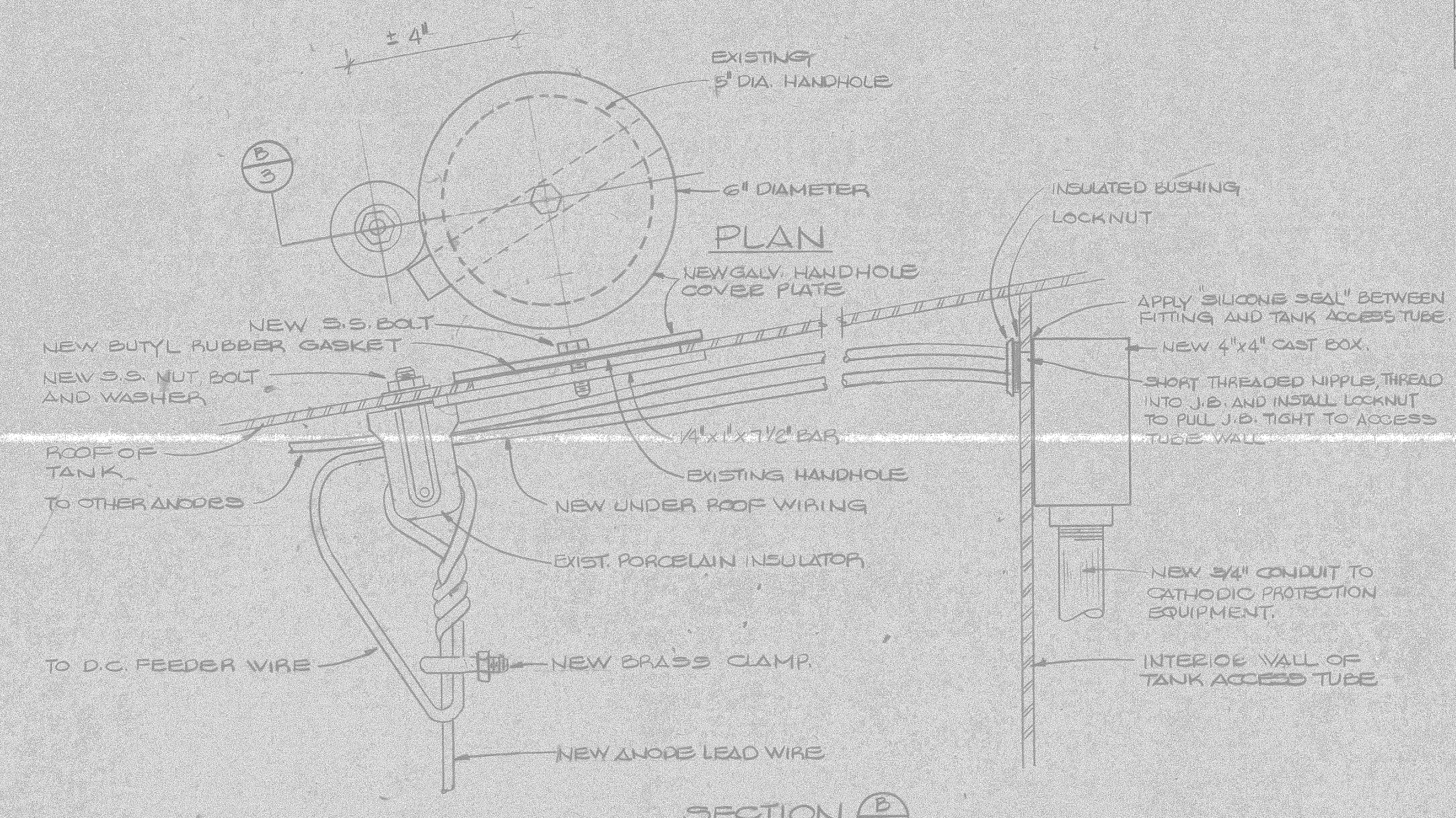




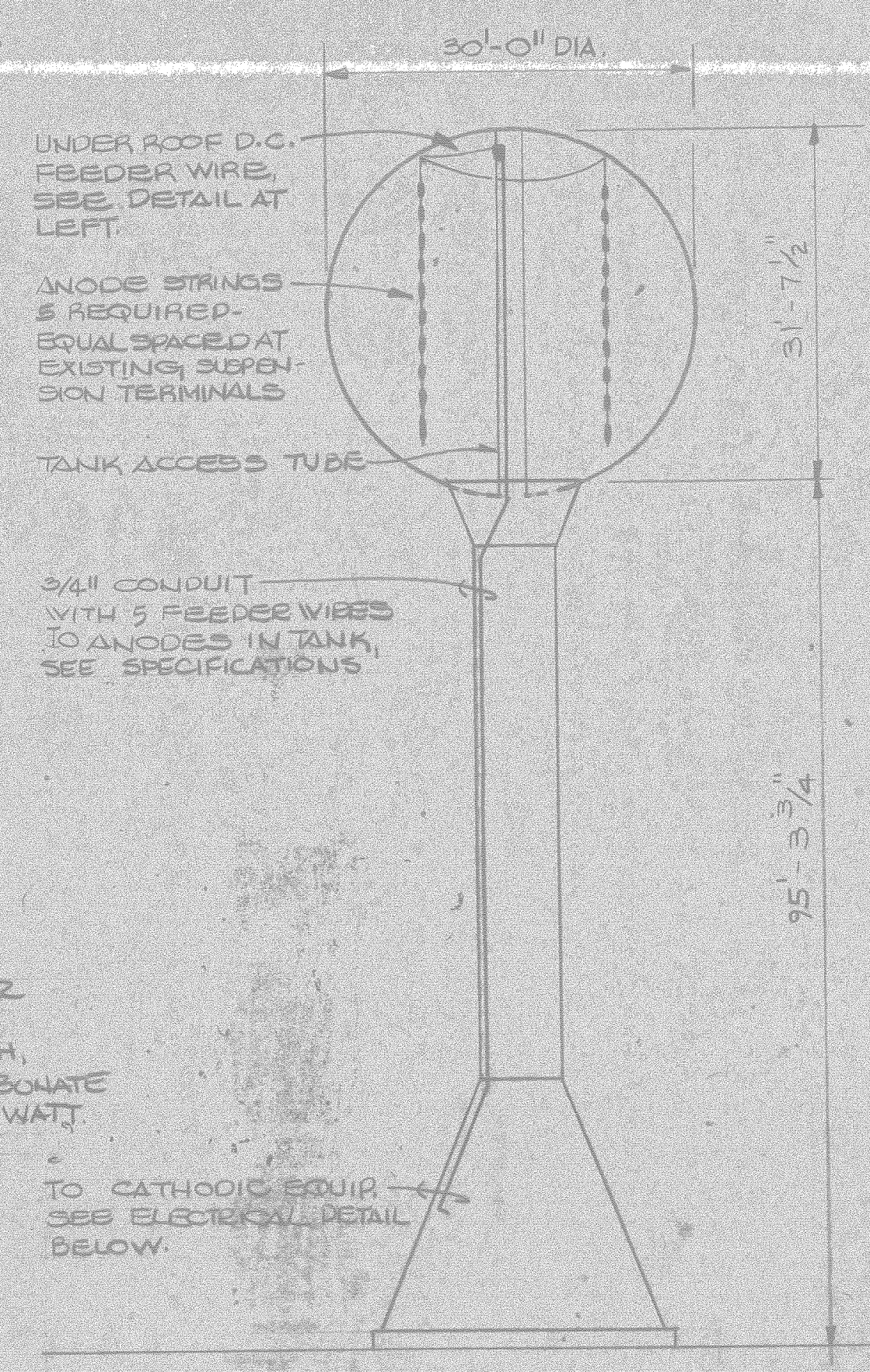
REVISIONS			
SYM	DESCRIPTION	DATE	APPROVED



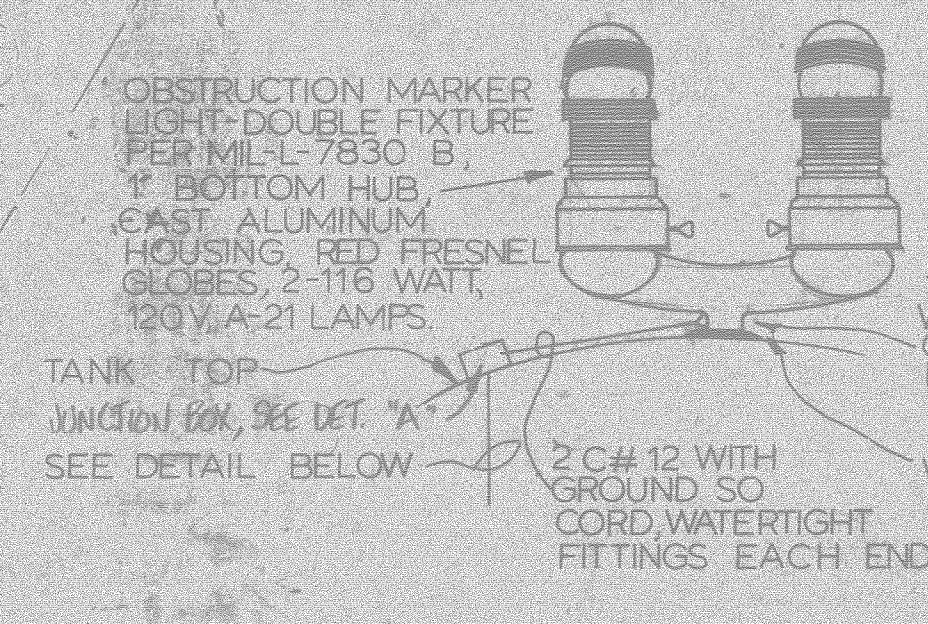
**FOUNDATION PLAN**  
3/8" = 1'-0"



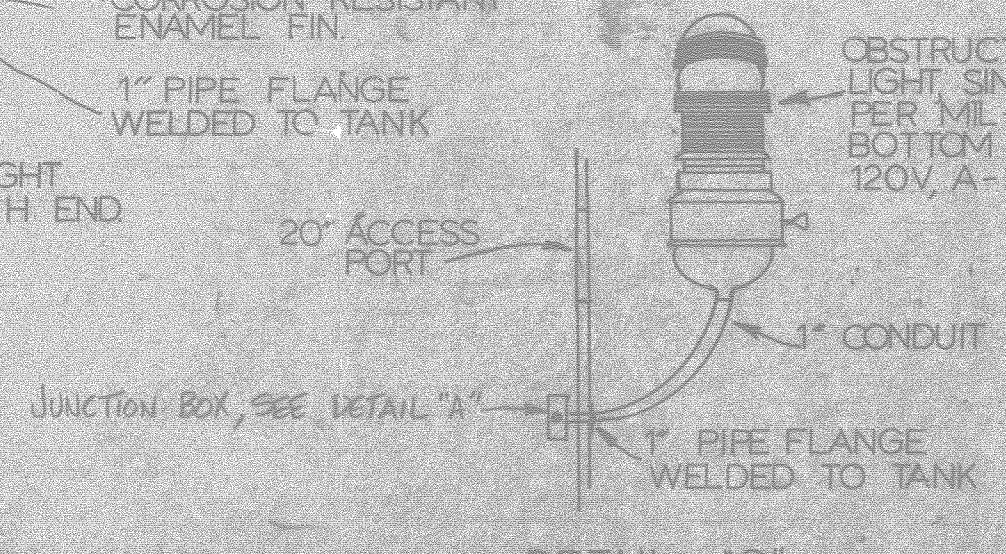
**HANDHOLE & SUSPENSION DETAIL**  
NO SCALE



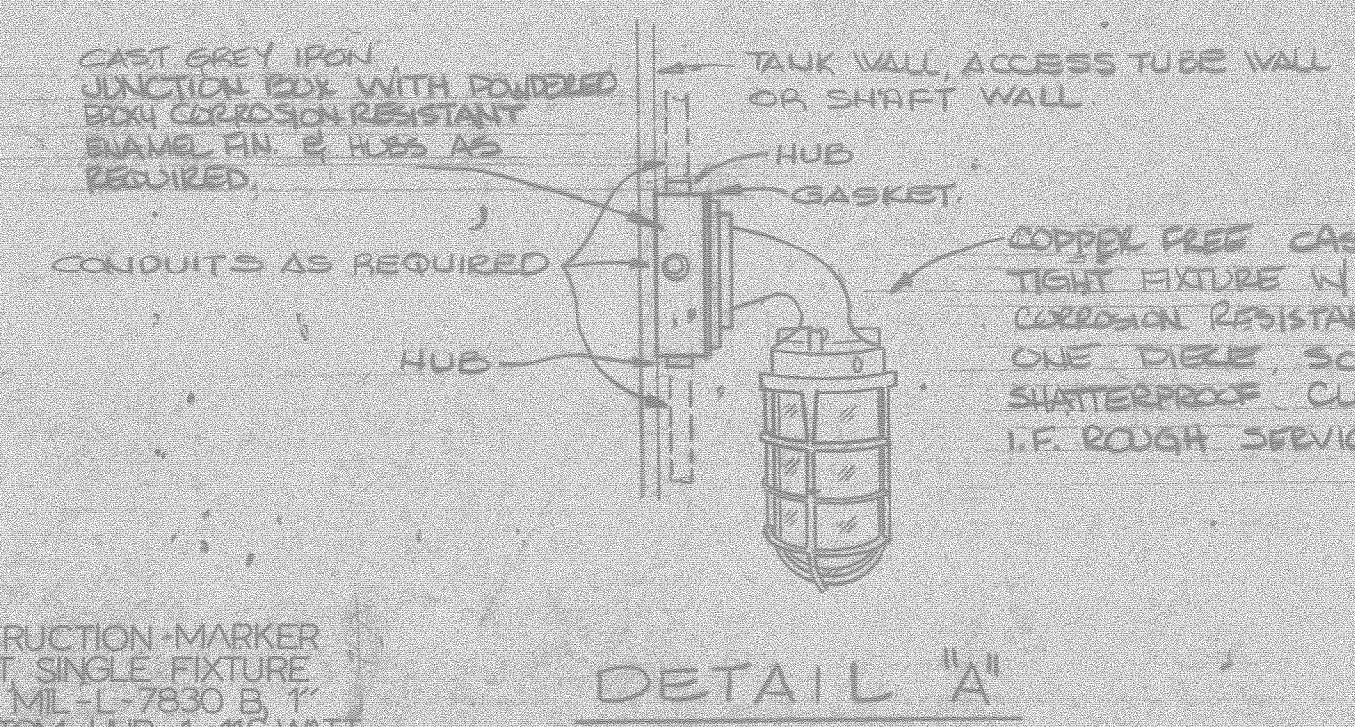
**ELEVATION CATHODIC PROTECTION SYSTEM**  
NO SCALE



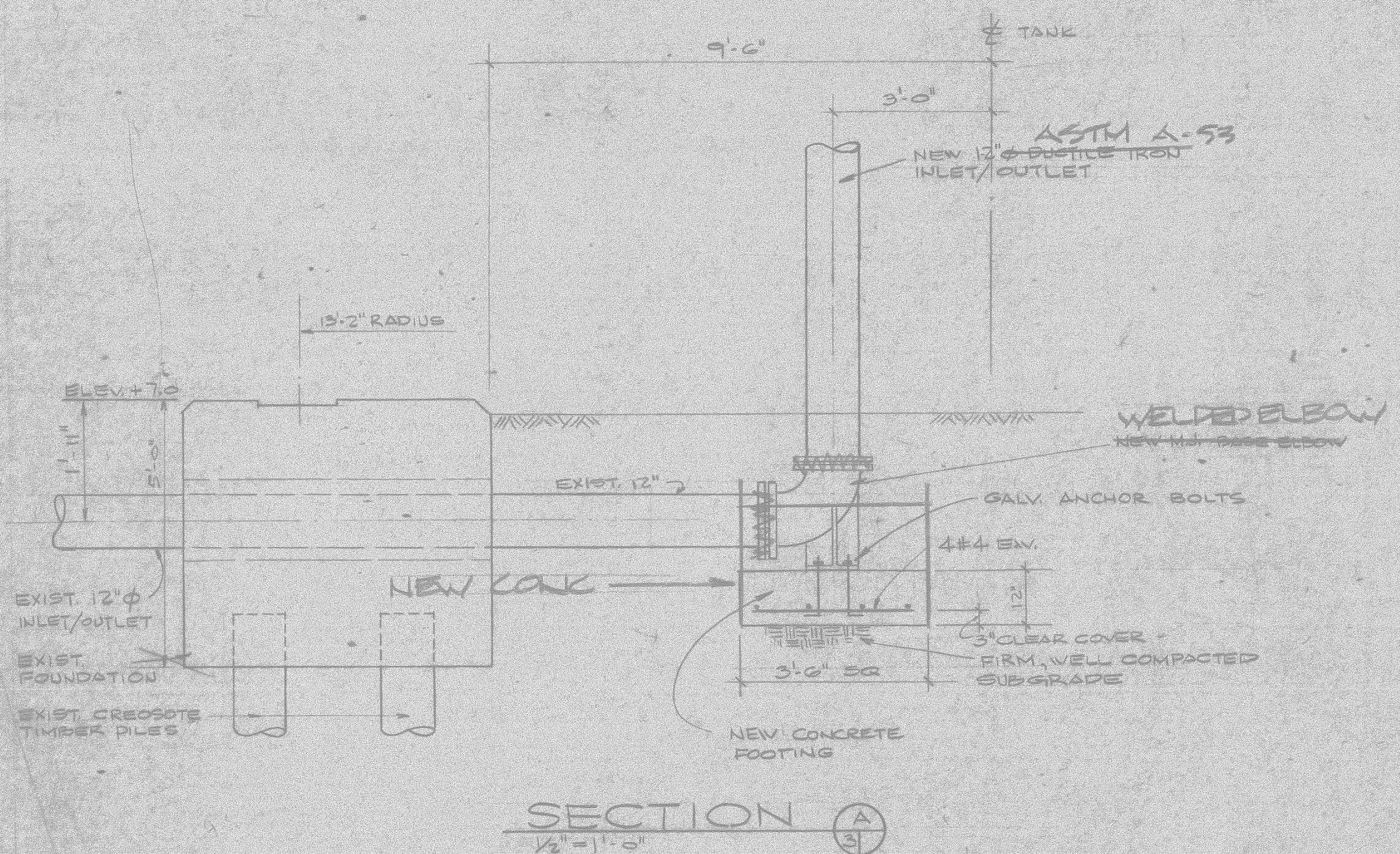
**DETAIL "B"**  
NO SCALE



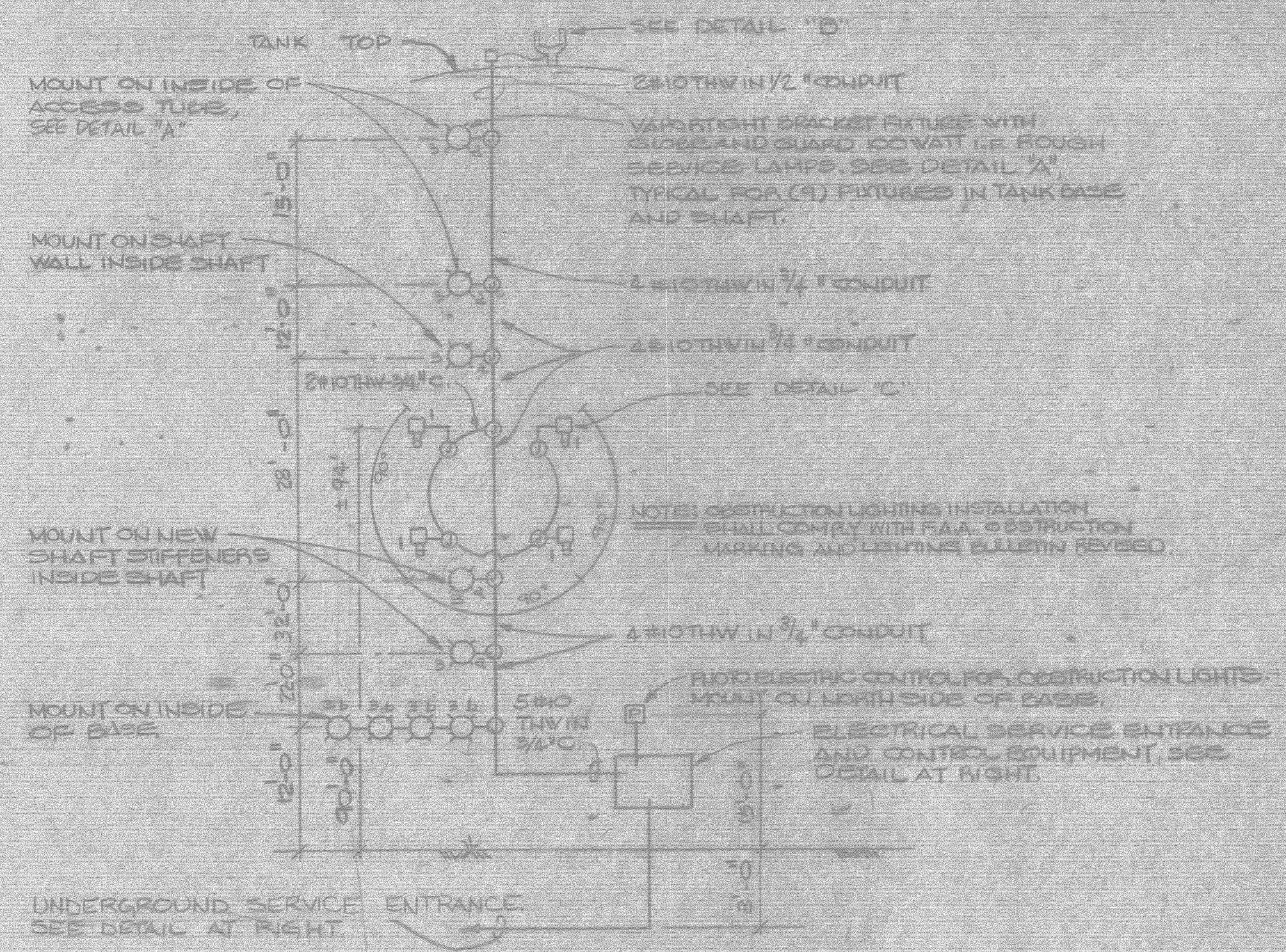
**DETAIL "C"**  
NO SCALE



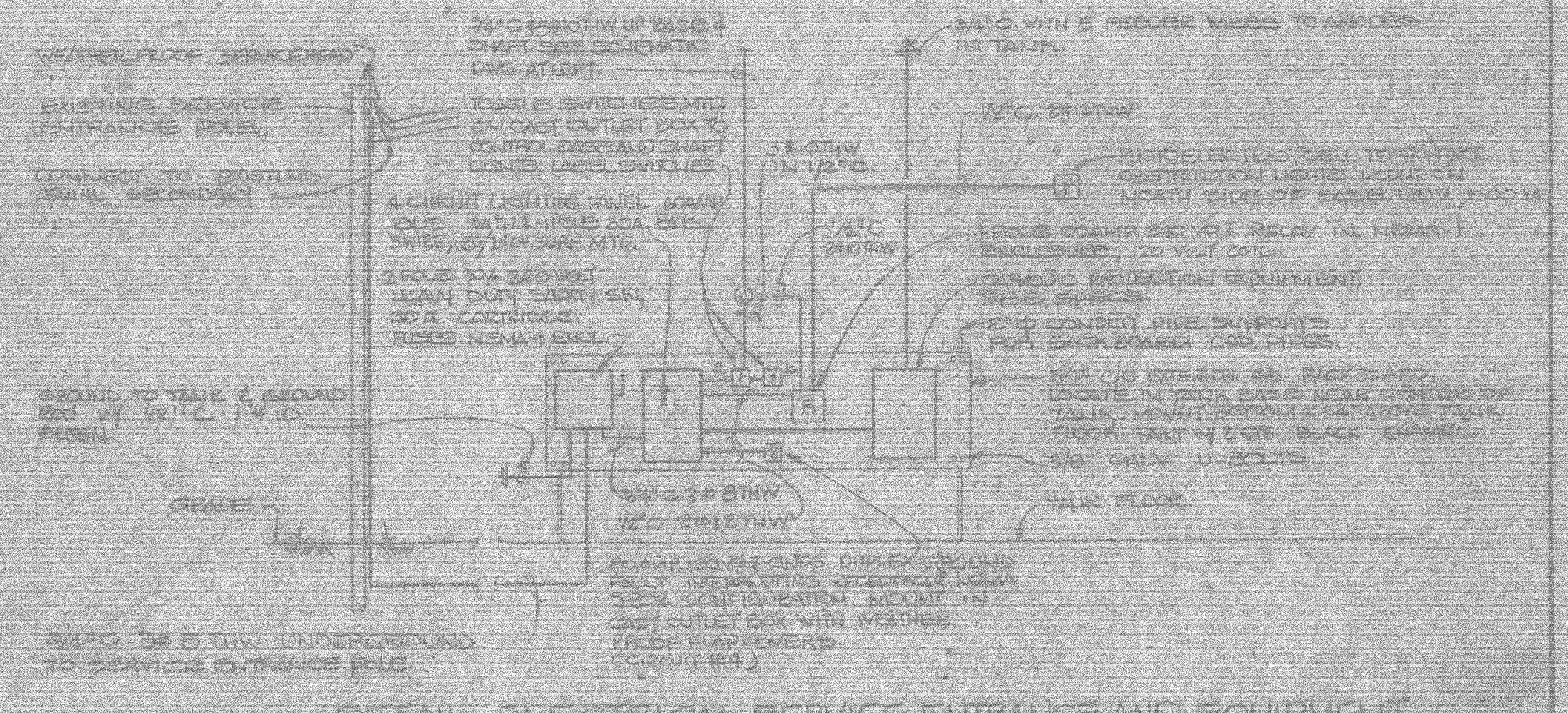
**DETAIL "A"**  
NO SCALE



**SECTION "A"**  
1/2" = 1'-0"



**SCHEMATIC WIRING FOR OBSTRUCTION SHAFT AND BASE LIGHTING**  
NO SCALE



**DETAIL - ELECTRICAL SERVICE ENTRANCE AND EQUIPMENT**  
NO SCALE

HENRY VON OEBEN & ASSOCIATED CONSULTING ENGINEERS WASHINGTON, D.C.		DEPARTMENT OF THE NAVY NAVAL FACILITIES ENGINEERING COMMAND ATLANTIC DIVISION ACROLYN, VA.	
PROJECT NO. 10000		REPAIR OVERHEAD WATERTANK S-BA-108 CAMP LEJEUNE, N.C.	
SUBMITTED BY: [Signature]		DATE: 8/17/77	
DRAWN BY: [Signature]		DATE: 8/17/77	
CHECKED BY: [Signature]		DATE: 8/17/77	
APPROVED BY: [Signature]		DATE: 8/17/77	
NO. OF SHEETS: 3		SHEET NO. 3 OF 3	

