

**VALUABLE**

SUBJECT

TEL. CABLE From  
Camp Gieger to Monford  
PointRETURN TO  
PUBLIC WORKS  
OFFICE  
CAMP LEJEUNE  
NORTH CAROLINA

FIELD PARTY

CONTROR  
C. G. 16  
S  
Ketchum  
C. G. 16  
Tape or Rod  
Tape or Rod  
STRUMENT NO.  
TAPE NO.

WEATHER

CLEAR  
CLOUDY  
WINDY  
RAIN  
FAIR  
SNOW  
HOT  
MODERATE  
COLD  
FOG

FILE No.

98-R

FLDR. No.

FIGURED BY

SHEET

1 of

NOTES CHECKED BY

DATE

5/20 1952

PLOTTED BY

Quad. No.

| STATION | DIST. | ANGLE |     | + | H. I.<br>BEARING | VER. ANG.<br>DIFF. | ELEVATION |
|---------|-------|-------|-----|---|------------------|--------------------|-----------|
|         |       | °     | ' " |   |                  |                    |           |

F.S. on 14+73.34

177 45 00 (1)

7+00

177 45 00 (M) P.I.

173 15 00 (S)

181 16 30 (1)

6+00

181 16 30 M P.I.

5+82

P.I.

4+98

3+90

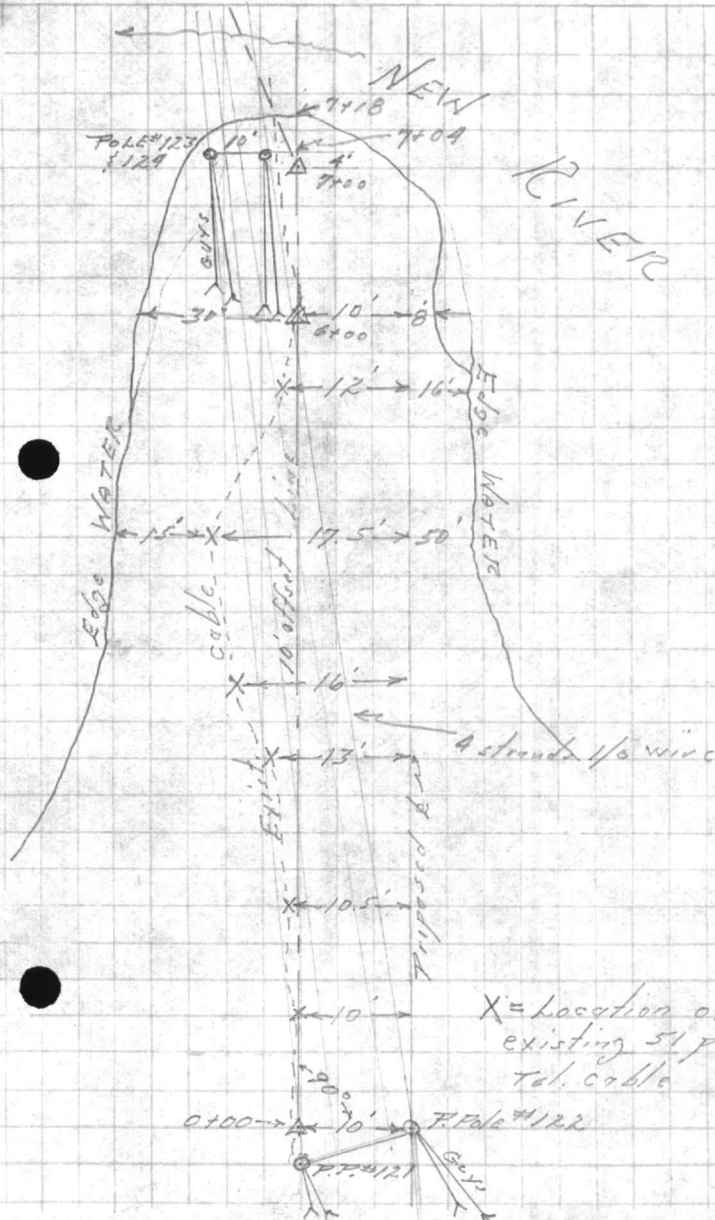
3+47

1+90

0+82

0+100

NOTE: An offset line was run 10'  
south of the Proposed R. for  
construction purposes.



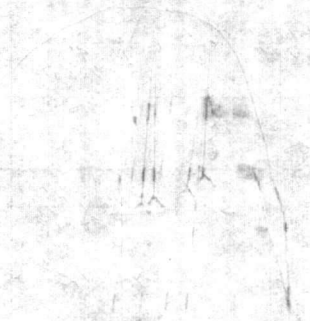
VA  
STATION  
DATE  
TIME  
WIND  
DIRECTION  
SPEED  
TEMPERATURE  
HUMIDITY  
PRESSURE  
SEA STATE  
VISIBILITY  
CLOUDS  
REMARKS

STATION NO. 1000  
DATE 10/10/50  
TIME 1400  
WIND 10 K  
DIRECTION 090  
SPEED 10  
TEMPERATURE 20  
HUMIDITY 80  
PRESSURE 1010  
SEA STATE 1  
VISIBILITY 10  
CLOUDS 1000 1000  
REMARKS

DRIFT  
DIR AND  
SPEED

MEMORANDUM FOR THE COMMANDER  
U.S. NAVY  
SUBJECT: [Illegible]  
1. [Illegible]  
2. [Illegible]  
3. [Illegible]  
4. [Illegible]  
5. [Illegible]  
6. [Illegible]  
7. [Illegible]  
8. [Illegible]  
9. [Illegible]  
10. [Illegible]  
11. [Illegible]  
12. [Illegible]  
13. [Illegible]  
14. [Illegible]  
15. [Illegible]  
16. [Illegible]  
17. [Illegible]  
18. [Illegible]  
19. [Illegible]  
20. [Illegible]  
21. [Illegible]  
22. [Illegible]  
23. [Illegible]  
24. [Illegible]  
25. [Illegible]  
26. [Illegible]  
27. [Illegible]  
28. [Illegible]  
29. [Illegible]  
30. [Illegible]  
31. [Illegible]  
32. [Illegible]  
33. [Illegible]  
34. [Illegible]  
35. [Illegible]  
36. [Illegible]  
37. [Illegible]  
38. [Illegible]  
39. [Illegible]  
40. [Illegible]  
41. [Illegible]  
42. [Illegible]  
43. [Illegible]  
44. [Illegible]  
45. [Illegible]  
46. [Illegible]  
47. [Illegible]  
48. [Illegible]  
49. [Illegible]  
50. [Illegible]  
51. [Illegible]  
52. [Illegible]  
53. [Illegible]  
54. [Illegible]  
55. [Illegible]  
56. [Illegible]  
57. [Illegible]  
58. [Illegible]  
59. [Illegible]  
60. [Illegible]  
61. [Illegible]  
62. [Illegible]  
63. [Illegible]  
64. [Illegible]  
65. [Illegible]  
66. [Illegible]  
67. [Illegible]  
68. [Illegible]  
69. [Illegible]  
70. [Illegible]  
71. [Illegible]  
72. [Illegible]  
73. [Illegible]  
74. [Illegible]  
75. [Illegible]  
76. [Illegible]  
77. [Illegible]  
78. [Illegible]  
79. [Illegible]  
80. [Illegible]  
81. [Illegible]  
82. [Illegible]  
83. [Illegible]  
84. [Illegible]  
85. [Illegible]  
86. [Illegible]  
87. [Illegible]  
88. [Illegible]  
89. [Illegible]  
90. [Illegible]  
91. [Illegible]  
92. [Illegible]  
93. [Illegible]  
94. [Illegible]  
95. [Illegible]  
96. [Illegible]  
97. [Illegible]  
98. [Illegible]  
99. [Illegible]  
100. [Illegible]

MEMORANDUM FOR THE COMMANDER  
U.S. NAVY  
SUBJECT: [Illegible]  
1. [Illegible]  
2. [Illegible]  
3. [Illegible]  
4. [Illegible]  
5. [Illegible]  
6. [Illegible]  
7. [Illegible]  
8. [Illegible]  
9. [Illegible]  
10. [Illegible]  
11. [Illegible]  
12. [Illegible]  
13. [Illegible]  
14. [Illegible]  
15. [Illegible]  
16. [Illegible]  
17. [Illegible]  
18. [Illegible]  
19. [Illegible]  
20. [Illegible]  
21. [Illegible]  
22. [Illegible]  
23. [Illegible]  
24. [Illegible]  
25. [Illegible]  
26. [Illegible]  
27. [Illegible]  
28. [Illegible]  
29. [Illegible]  
30. [Illegible]  
31. [Illegible]  
32. [Illegible]  
33. [Illegible]  
34. [Illegible]  
35. [Illegible]  
36. [Illegible]  
37. [Illegible]  
38. [Illegible]  
39. [Illegible]  
40. [Illegible]  
41. [Illegible]  
42. [Illegible]  
43. [Illegible]  
44. [Illegible]  
45. [Illegible]  
46. [Illegible]  
47. [Illegible]  
48. [Illegible]  
49. [Illegible]  
50. [Illegible]  
51. [Illegible]  
52. [Illegible]  
53. [Illegible]  
54. [Illegible]  
55. [Illegible]  
56. [Illegible]  
57. [Illegible]  
58. [Illegible]  
59. [Illegible]  
60. [Illegible]  
61. [Illegible]  
62. [Illegible]  
63. [Illegible]  
64. [Illegible]  
65. [Illegible]  
66. [Illegible]  
67. [Illegible]  
68. [Illegible]  
69. [Illegible]  
70. [Illegible]  
71. [Illegible]  
72. [Illegible]  
73. [Illegible]  
74. [Illegible]  
75. [Illegible]  
76. [Illegible]  
77. [Illegible]  
78. [Illegible]  
79. [Illegible]  
80. [Illegible]  
81. [Illegible]  
82. [Illegible]  
83. [Illegible]  
84. [Illegible]  
85. [Illegible]  
86. [Illegible]  
87. [Illegible]  
88. [Illegible]  
89. [Illegible]  
90. [Illegible]  
91. [Illegible]  
92. [Illegible]  
93. [Illegible]  
94. [Illegible]  
95. [Illegible]  
96. [Illegible]  
97. [Illegible]  
98. [Illegible]  
99. [Illegible]  
100. [Illegible]



**VALUABLE**

SUBJECT TEL. CABLE FROM  
Camp Gieger to Monford Pt  
Location

RETURN TO  
PUBLIC WORKS  
OFFICE  
CAMP LEJEUNE  
NORTH CAROLINA

**FIELD PARTY**

Sandifer IN CHARGE  
INSTRUMENT  
NOTES  
TAPE READ  
TAPE OR ROD  
TAPE OR ROD  
INSTRUMENT NO.  
TAPE NO.

**WEATHER**

CLEAR  
CLOUDY  
WINDY  
RAIN  
FAIR  
SNOW  
HOT  
MODERATE  
COLD  
FOG

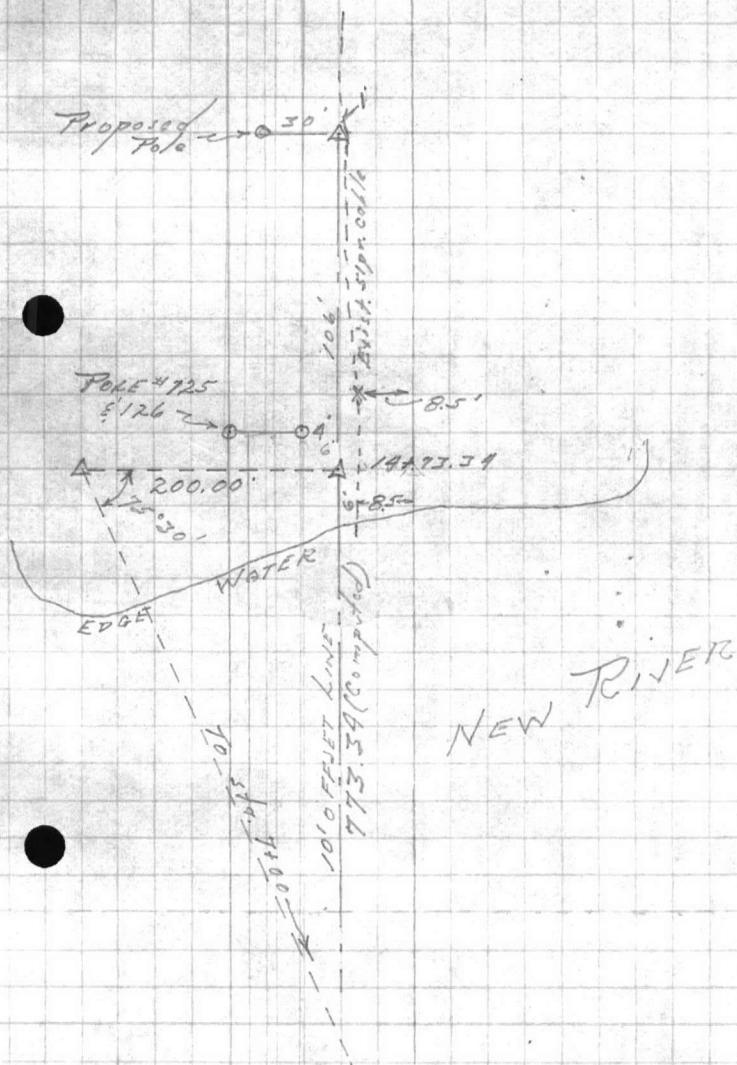
FILE No. \_\_\_\_\_  
FLDR. No. \_\_\_\_\_  
SHEET \_\_\_\_\_  
DATE 5/26 1952  
FIGURED BY \_\_\_\_\_  
NOTES CHECKED BY \_\_\_\_\_  
PLOTTED BY \_\_\_\_\_

Quad. No. \_\_\_\_\_

| STATION | DIST. | ANGLE |   | + | H. I.<br>BEARING | VER. ANG.<br>DIFF. | ELEVATION |
|---------|-------|-------|---|---|------------------|--------------------|-----------|
|         |       | °     | " |   |                  |                    |           |

15479.34

14473.34





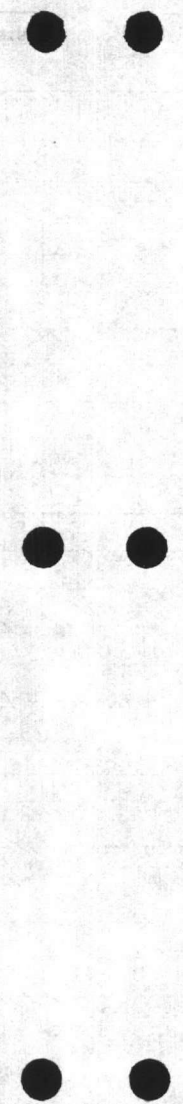
W. A. U. S. D.  
NORTH CAROLINA  
DATE CHECKED  
STATE WORKS  
STATION

STATION DATE  
DURING DIST  
M. V. S. AND  
STATION

FIELD PARTY  
TO CHECK  
BY  
DATE  
TIME  
PLACE

WEATHER  
WIND  
TEMP  
HUMIDITY  
MOON  
CLOUDS  
RAIN

PLANT  
SPECIES  
LOCALITY  
COLLECTOR  
DATE  
TIME  
PLACE



**VALUABLE**

SUBJECT

Tel. Cable-Camp Greger  
To Montford Point  
Sounding in New RiverRETURN TO  
PUBLIC WORKS  
OFFICE  
CAMP LEJEUNE  
NORTH CAROLINA

## FIELD PARTY

\_\_\_\_\_  
IN CHARGE  
\_\_\_\_\_  
INSTRUMENT  
\_\_\_\_\_  
NOTES  
\_\_\_\_\_  
TAPE READ  
\_\_\_\_\_  
TAPE OR ROD  
\_\_\_\_\_  
TAPE OR ROD  
\_\_\_\_\_  
INSTRUMENT NO.  
\_\_\_\_\_  
TAPE NO.

## WEATHER

\_\_\_\_\_  
CLEAR  
\_\_\_\_\_  
CLOUDY  
\_\_\_\_\_  
WINDY  
\_\_\_\_\_  
RAIN  
\_\_\_\_\_  
FAIR\_\_\_\_\_  
SNOW  
\_\_\_\_\_  
HOT  
\_\_\_\_\_  
MODERATE  
\_\_\_\_\_  
COLD  
\_\_\_\_\_  
FOG

FILE No. \_\_\_\_\_

FLDR. No. \_\_\_\_\_

SHEET \_\_\_\_\_

DATE \_\_\_\_\_ 19\_\_

Quad. No. \_\_\_\_\_

| STATION | DIST. | ANGLE<br>° ' "          | + | H. I.<br>BEARING | VER: ANG.<br>DIFF. | ELEVATION |
|---------|-------|-------------------------|---|------------------|--------------------|-----------|
| # 10    | 110'  | 7100 - F.S. on 14173.24 |   |                  |                    | 0.0       |
|         |       |                         |   |                  |                    | -6.0      |
|         |       |                         |   |                  |                    | -9.0      |
| # 11    | 45'   |                         |   |                  |                    | 0.0       |
|         |       |                         |   |                  |                    | -1.8      |
|         |       |                         |   |                  |                    | -7.0      |
| # 12    | 15'   |                         |   |                  |                    | 0.0       |
|         |       |                         |   |                  |                    | -5.0      |
| 6100    |       |                         |   |                  |                    | 0.0       |
|         |       |                         |   |                  |                    | -7.0      |
| 5100    |       |                         |   |                  |                    | 0.0       |
|         |       |                         |   |                  |                    | -5.0      |
| 4100    |       |                         |   |                  |                    | 0.0       |
|         |       |                         |   |                  |                    | -5.0      |

Water

Muck

Hard bottom

Water

Muck

Edge water  
MuckSand  
Top ground  
MuckTop ground  
Muck

Muck

over

UNIVERSITY OF CALIFORNIA  
SCHOOL OF GEOGRAPHY  
AND ENVIRONMENTAL STUDIES  
SAN DIEGO, CALIFORNIA

STATION NO. DATE TIME OF DAY

3100

0.0  
-5.0

Top ground  
Muck

0160 (edge swamp)

0.0  
-3.0

Muck  
Sand



**VALUABLE**
 RETURN TO  
 PUBLIC WORKS  
 OFFICE  
 CAMP LEJEUNE  
 NORTH CAROLINA

SUBJECT

*Tel. Cable From*  
*Camp Greger to Minford*  
*Point*  
*Soundings across New River*

## FIELD PARTY

 \_\_\_\_\_ IN CHARGE  
 \_\_\_\_\_ INSTRUMENT  
 \_\_\_\_\_ NOTES  
 \_\_\_\_\_ TAPE READ  
 \_\_\_\_\_ TAPE OR ROD  
 \_\_\_\_\_ TAPE OR ROD  
 \_\_\_\_\_ INSTRUMENT NO.  
 \_\_\_\_\_ TAPE NO.

## WEATHER

 CLEAR  
 CLOUDY  
 WINDY  
 RAIN  
 FAIR  
 SNOW  
 HOT  
 MODERATE  
 COLD  
 FOG

FILE No. \_\_\_\_\_

FLDR. No. \_\_\_\_\_

SHEET \_\_\_\_\_

DATE \_\_\_\_\_ 19\_\_

FIGURED BY \_\_\_\_\_

NOTES CHECKED BY \_\_\_\_\_

PLOTTED BY \_\_\_\_\_

Quad. No. \_\_\_\_\_

| STATION                | DIST. | ANGLE |   |   | H. I.<br>BEARING | VER. ANG.<br>DIFF. | ELEVATION |
|------------------------|-------|-------|---|---|------------------|--------------------|-----------|
|                        |       | °     | ' | " |                  |                    |           |
| # 1                    | 765'  |       |   |   |                  |                    |           |
| Note: F.S. on 1447339- |       |       |   |   |                  |                    |           |
|                        |       |       |   |   |                  | 0.0                |           |
|                        |       |       |   |   |                  | -2.1               |           |
| # 2                    | 750'  |       |   |   |                  | 0.0                |           |
|                        |       |       |   |   |                  | -1.3               |           |
|                        |       |       |   |   |                  | -2.3               |           |
| # 3                    | 700'  |       |   |   |                  | 0.0                |           |
|                        |       |       |   |   |                  | -2.1               |           |
|                        |       |       |   |   |                  | -4.0               |           |
| # 4                    | 620   |       |   |   |                  | 0.0                |           |
|                        |       |       |   |   |                  | -4.0               |           |
|                        |       |       |   |   |                  | -13.0              |           |
| # 5                    | 560   |       |   |   |                  | 0.0                |           |
|                        |       |       |   |   |                  | -5.0               |           |
|                        |       |       |   |   |                  | -11.0              |           |

Note: All measurements taken from top  
 of water  
 edge water  
 Muck

Sand

Water

Sand

Water

Sand

Water

Muck

Hard bottom

Water

Muck

Hard bottom

OVER

VALLEY  
 PUBLIC WORKS  
 OFFICE  
 WASHINGTON  
 DISTRICT OF COLUMBIA

FIELD PARTY \_\_\_\_\_  
 IN CHARGE \_\_\_\_\_  
 STATION \_\_\_\_\_  
 DATE \_\_\_\_\_  
 TIME \_\_\_\_\_  
 WEATHER \_\_\_\_\_  
 CLEAR \_\_\_\_\_  
 CLOUDY \_\_\_\_\_  
 MOON \_\_\_\_\_  
 WINDY \_\_\_\_\_  
 WIND \_\_\_\_\_  
 TEMPERATURE \_\_\_\_\_  
 WIND DIRECTION \_\_\_\_\_  
 WIND VELOCITY \_\_\_\_\_  
 WIND FORCE \_\_\_\_\_  
 WIND STATE \_\_\_\_\_  
 WIND EFFECT \_\_\_\_\_  
 WIND CHARACTER \_\_\_\_\_  
 WIND COLOR \_\_\_\_\_  
 WIND TASTE \_\_\_\_\_  
 WIND SMELL \_\_\_\_\_  
 WIND SOUND \_\_\_\_\_  
 WIND TOUCH \_\_\_\_\_  
 WIND TASTE \_\_\_\_\_  
 WIND SMELL \_\_\_\_\_  
 WIND SOUND \_\_\_\_\_  
 WIND TOUCH \_\_\_\_\_

#6 480'  
 at 7100-F.S. on 19173.74

-0.0

Water

-6.5

Muck

-14.0

Hard bottom

#7 420'

0.0

Water

-8.0

Muck

-20.0

No hard bottom at +20'

#8 320'

0.0

Water

-9.0

Muck

-14.0

#9 260

0.0

Water

-10.0

Muck

-16.5

256  
 916  
 1976