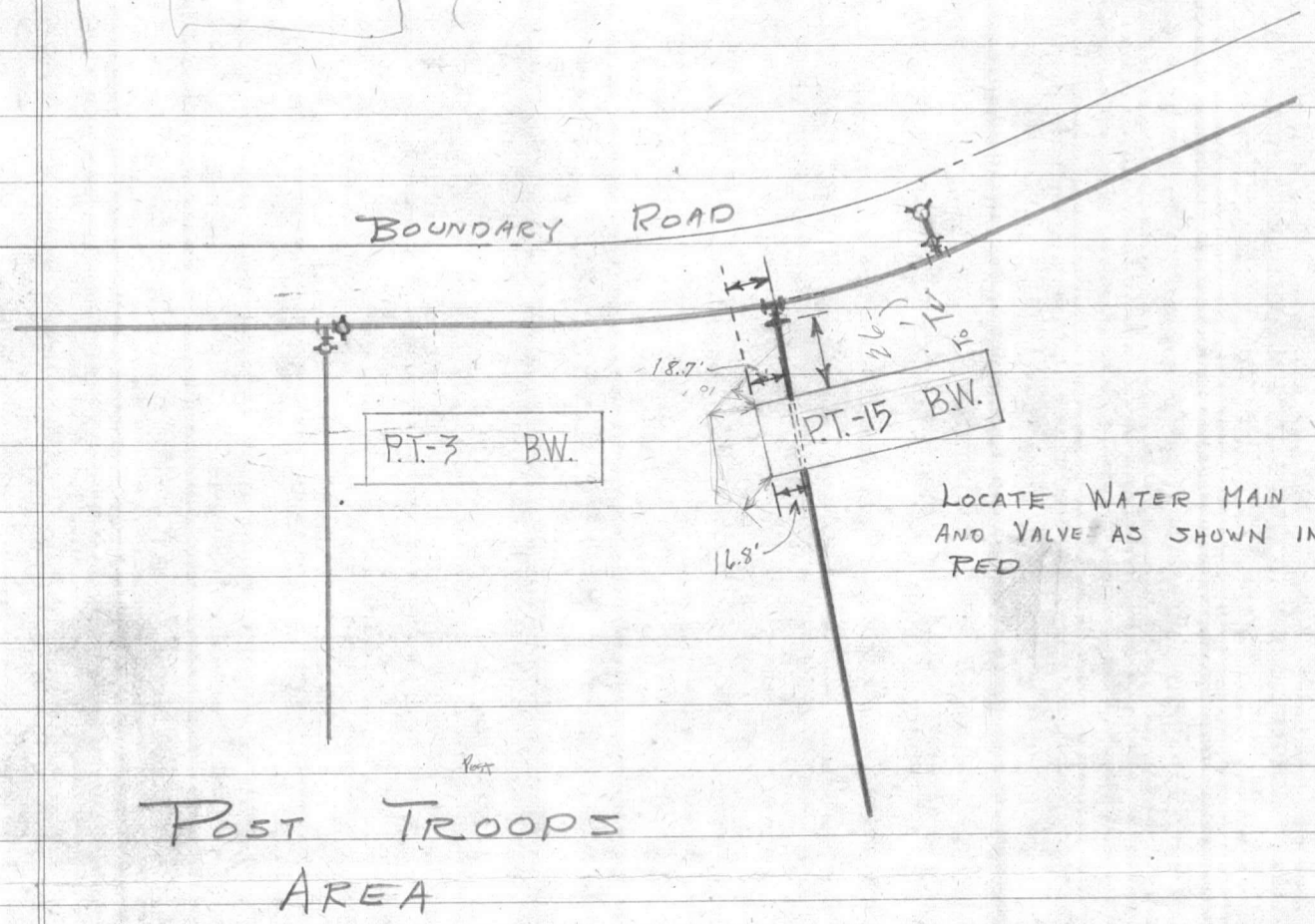


160-B-3 & B-4

PLOTTED By: B.K.W. 8/17/42



LOCATE WATER MAIN AND VALVE AS SHOWN IN RED

POST TROOPS AREA

AUG - 3, 1942

J.W.S.

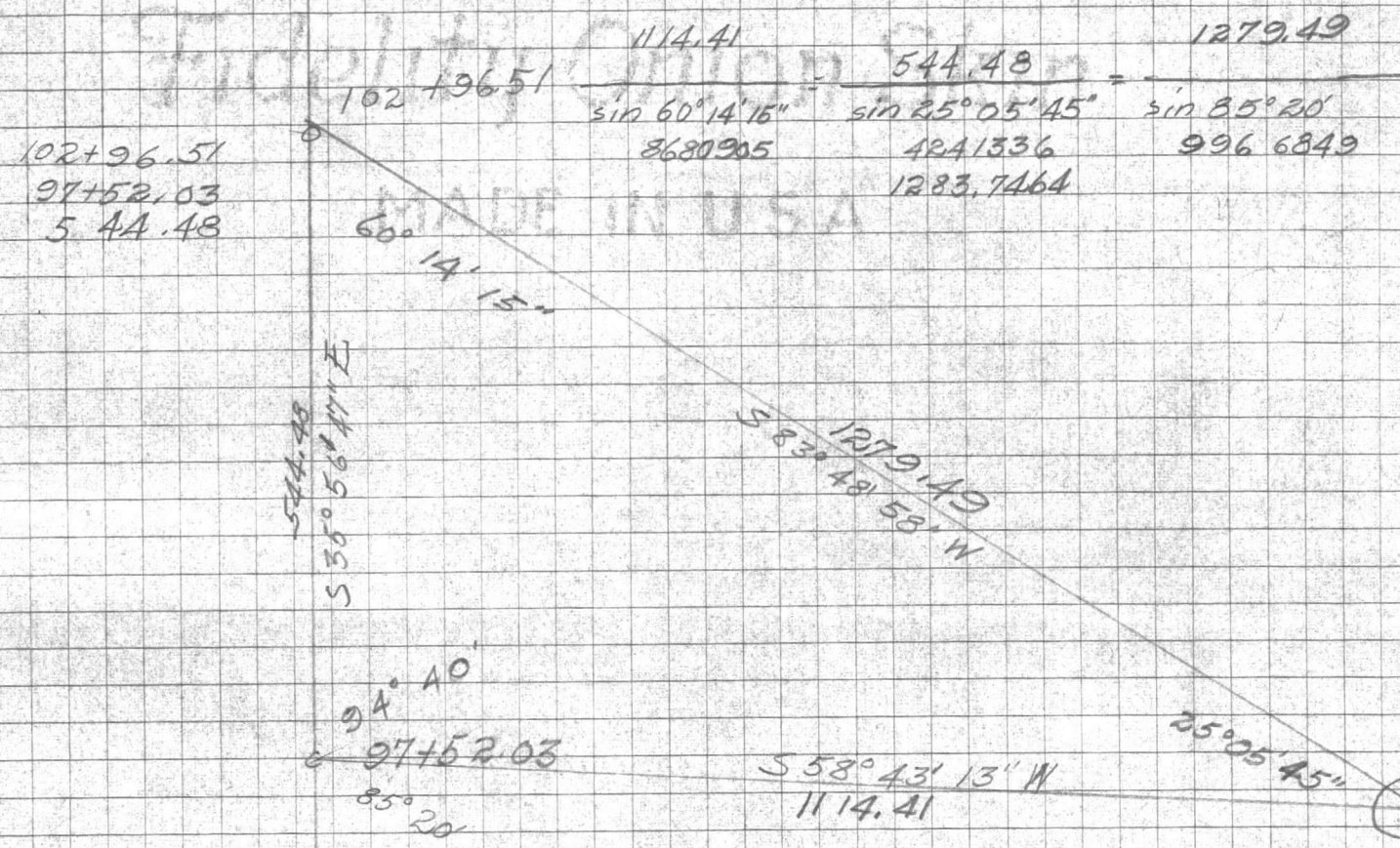
11 1/4  
87  
87  
9157



SUBJECT Comp. - Record Map. SHEET OF \_\_\_\_\_  
 COMPUTED BY: WCA DATE 5-12-42 CHECKED BY: \_\_\_\_\_ DATE \_\_\_\_\_

OWEN G. DUNN CO. 38974-5M 12-41

179 60  
 94 40  
 85° 20'  
 60° 14' 15"  
 25° 05' 45"



179 59 60  
 25 05 45  
 154° 54' 15"  
 179 59 60  
 60 14 15  
 113° 45' 45"

$S 35^{\circ} 56' 47'' E$   
 94° 40' RT  
 $S 58^{\circ} 43' 13'' W$   
 154° 54' 15" Lt.  
 96° 11' 02"  
 179 59 60  
 N 83 48' 58" E  
 119 45' 45" Lt.  
 N 35° 56' 47" W

SUBJECT \_\_\_\_\_  
COMPUTED BY \_\_\_\_\_ DATE \_\_\_\_\_  
CHECKED BY \_\_\_\_\_ DATE \_\_\_\_\_  
OF SHEET \_\_\_\_\_

SWEN G. DUNN CO. PRINTED - 24 (10-51)

32 sheets  
Fidelity Union Bank  
MADE IN U.S.A.





