

# Glider Training Base

**VALUABLE**

RETURN TO  
CARR & J. E.  
GREINER CO.  
JACKSONVILLE,  
N. C.

SUBJECT Profile on 300' Ramp-  
in Center of Warm up Platform  
Line runs out in River  
Also profile on Northeast  
Corner warm up Platform

FIELD PARTY  
McClung IN CHARGE  
INSTRUMENT  
Banner NOTES  
TAPE READ  
Batson TAPE OR ROD  
TAPE OR ROD  
INSTRUMENT NO.  
TAPE NO.

WEATHER  
CLEAR SNOW  
CLOUDY HOT  
WINDY MODERATE  
RAIN COLD  
FAIR FOG  
FIGURED BY Banner SHEET  
NOTES CHECKED BY \_\_\_\_\_  
PLOTTED BY \_\_\_\_\_ DATE July 24 1942

FILE No. \_\_\_\_\_

FLDR. No. \_\_\_\_\_

STATION	DIST.	ANGLE	+	H. I.	-	ELEVATION
		° ' "			VERI. ANG. DIFF.	

B.M.			3.46	13.63		10.17
------	--	--	------	-------	--	-------

0+00					3.5	10.1
------	--	--	--	--	-----	------

0+34					3.5	10.1
------	--	--	--	--	-----	------

Top Bank

0+42			12.9	0.7		
------	--	--	------	-----	--	--

Bottom Bank - Edge Water

0+75			14.5	-0.9		
------	--	--	------	------	--	--

in River

1+15			14.7	-1.1		
------	--	--	------	------	--	--

" "

2+00			15.4	-1.8		
------	--	--	------	------	--	--

" "

2+53			15.9	-2.3		
------	--	--	------	------	--	--

" "

3+00			16.8	-3.2		
------	--	--	------	------	--	--

" "

T.P.			3.82	9.81		
------	--	--	------	------	--	--

232 1213

" "

0+0			41	8.0		
-----	--	--	----	-----	--	--

hub

0+10			47	7.4		
------	--	--	----	-----	--	--

Top Bank

0+17	Edge of water		12.5	-0.4		
------	---------------	--	------	------	--	--

Edge of water

0+40			12.8	-0.7		
------	--	--	------	------	--	--

in River

Northeast corner  
warm up platform

AVAILABLE

SUBJECT

ATTENTION

DATE

BY

NO.

REV.

ISSUE

DATE

BY

NO.

REV.

ISSUE

DATE

BY

NO.

REV.

ISSUE

DATE

BY

NO.

REV.

ISSUE

DATE

BY

NO.

REV.

ISSUE

DATE

BY

NO.

REV.

ISSUE

DATE

BY

NO.

REV.

ISSUE

DATE

BY

NO.

REV.

ISSUE

DATE

BY

NO.

REV.

FILE NO.

DATE

BY

NO.

REV.

ISSUE

DATE

BY

NO.

REV.

ISSUE

DATE

BY

NO.

REV.

ISSUE

DATE

BY

NO.

REV.

ISSUE

DATE

BY

NO.

REV.

ISSUE

DATE

BY

NO.

REV.

ISSUE

DATE

BY

NO.

REV.

ISSUE

DATE

BY

NO.

REV.

ISSUE

DATE

BY

NO.

REV.

ISSUE

DATE

BY

NO.

REV.

ISSUE

DATE

BY

NO.

REV.

ISSUE

DATE

BY

NO.

REV.

ISSUE

DATE

BY

NO.

REV.

ISSUE

SIR ARTHUR M. JONES

AND CENTER USA

**VALUABLE**

RETURN TO  
CARR & J. E.  
GREINER CO.  
JACKSONVILLE,  
N. C.

SUBJECT Profile on south  
East Corner of Wormup  
Platform

FIELD PARTY  
McClung IN CHARGE  
INSTRUMENT  
Banner NOTES  
TAPE READ  
Datson TAPE OR ROD  
TAPE OR ROD  
INSTRUMENT NO.  
TAPE NO.

WEATHER  
CLEAR SNOW  
CLOUDY HOT  
WINDY MODERATE  
RAIN COLD  
FAIR FOG  
FIGURED BY \_\_\_\_\_  
NOTES CHECKED BY \_\_\_\_\_  
PLOTTED BY \_\_\_\_\_

FILE No. \_\_\_\_\_  
FLDR. No. \_\_\_\_\_  
SHEET \_\_\_\_\_  
DATE \_\_\_\_\_ 19 \_\_\_\_\_

STATION	DIST.	ANGLE		H. I.	VER. ANG. DIFF.		ELEVATION	
		o	"		+	-		
BM							1017	
				421	1438			
0+00						371	10.67	▷ Triangle to SW
0+6						42	10.2	Top Bank -
0+15						136	0.8	Edge of water
0+40						14.9	-0.5	

FILE NO.

WEATHER

FIELD NO.

CLEAR  
CLOUDY  
MISTY  
FOG  
RAIN  
SNOW

WIND DIRECTION  
WIND FORCE  
TEMPERATURE  
RELATIVE HUMIDITY  
SEA LEVEL PRESSURE  
WIND VELOCITY

STATION

VALUABLE

DATE

TIME

REMARKS

SKY

CLOUDS

WIND

TEMP

HUMIDITY

PRESSURE

WIND VELOCITY

WIND DIRECTION

WIND FORCE

WIND VELOCITY

WIND DIRECTION

WIND FORCE

WIND VELOCITY

WIND DIRECTION

WIND FORCE

WIND VELOCITY

WIND DIRECTION

WIND FORCE

WIND VELOCITY

WIND DIRECTION

WIND FORCE

WIND VELOCITY

WIND DIRECTION

WIND FORCE

WIND VELOCITY

WIND DIRECTION

WIND FORCE

WIND VELOCITY

WIND DIRECTION

WIND FORCE

WIND VELOCITY

WIND DIRECTION

WIND FORCE

WIND VELOCITY

WIND DIRECTION

WIND FORCE

WIND VELOCITY

WIND DIRECTION

WIND FORCE

WIND VELOCITY

WIND DIRECTION



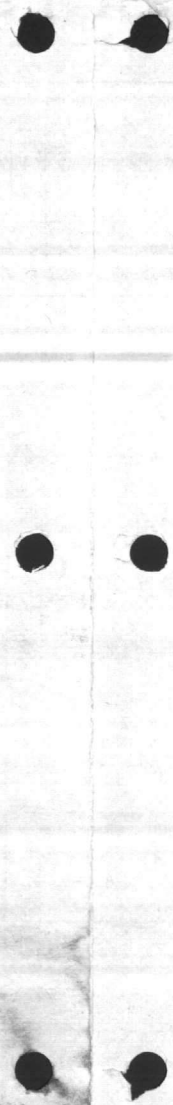
FILE NO.

STATE OF  
COUNTY OF  
FILE NO.  
DATE

FILE NO.

DATE  
BY

CONFIDENTIAL  
MURKIN  
BDD



**VALUABLE**

SUBJECT P.  
\_\_\_\_\_  
\_\_\_\_\_  
\_\_\_\_\_

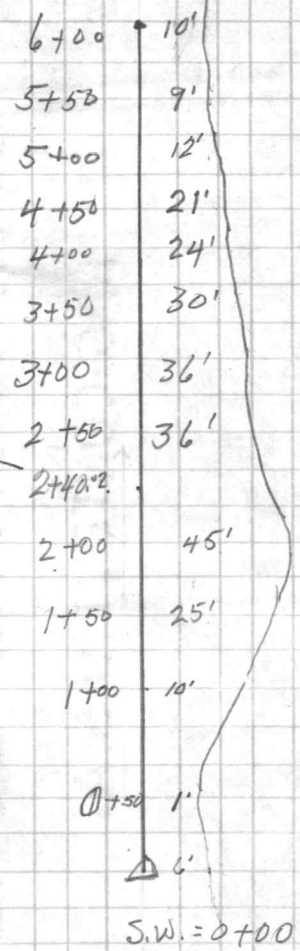
RETURN TO  
CARR & J. E.  
GREINER CO.  
JACKSONVILLE,  
N. C.

FIELD PARTY  
McClung IN CHARGE  
" INSTRUMENT  
Bonner NOTES  
Batson TAPE READ  
\_\_\_\_ TAPE OR ROD  
\_\_\_\_ TAPE OR ROD  
INSTRUMENT NO. \_\_\_\_\_  
TAPE NO. \_\_\_\_\_

WEATHER  
CLEAR SNOW  
CLOUDY HOT  
WINDY MODERATE  
RAIN COLD  
FAIR FOG

FILE No. \_\_\_\_\_  
FLDR. No. \_\_\_\_\_  
SHEET \_\_\_\_\_  
DATE July 29 19 42

STATION      DIST.      ANGLE      +      H. I.      -      ELEVATION  
                 °      '      "      VER: ANG.      DIFF.



Intersection Taxiway + Line X

114-36  
65-34  
179.60



WILMINGTON BOND

WILMINGTON BOND



**VALUABLE**

RETURN TO  
CARR & J. E.  
GREINER CO.  
JACKSONVILLE,  
N. C.

SUBJECT Profile on Taxiway  
Running East From Airport  
To Warm up platform on  
Edge of River -

FIELD PARTY  
McClung IN CHARGE  
Bonner INSTRUMENT  
McClung NOTES  
Batson TAPE READ  
TAPE OR ROD  
TAPE OR ROD  
INSTRUMENT NO.  
TAPE NO.

WEATHER  
CLEAR SNOW  
CLOUDY HOT  
WINDY MODERATE  
RAIN COLD  
FAIR FOG  
FIGURED BY  
NOTES CHECKED BY WCA  
PLOTTED BY

FILE No. \_\_\_\_\_  
FLDR. No. \_\_\_\_\_  
SHEET 1 of 2  
DATE July 25, 1942

STATION	DIST.	ANGLE		H. I.	VER. ANG. DIFF.	ELEVATION	
		°	' "				
B.M.-						11.86	
		7.37	19.23				
3+41.55				4.48		14.75	Top Finished Concrete, East Edge Warm up Apron
4+00				5.2		14.01	
5+00				5.0		14.21	
6+00				5.0		14.21	
7+00				5.8		13.41	
8+00				6.0		13.21	
9+00				7.1		12.11	
10+00				8.4		11.81 10.8	
T.P.		3.17	13.34	9.06		10.17	
11+00				2.2		11.11	
12+00				2.1		11.21	
13+00				3.3		10.01	
13+95				6.1		7.21	Bottom ditch

VALLEY

RETURN TO  
CLASS 1  
ADDRESS  
CITY

SUBJECT

FIELD PARTY

WATER

NO.

DATE

TIME

LOCATION

WIND

TEMP.

MOIST.

BAROM.

REMARKS

FILE NO.

DATE

TIME

LOCATION

WIND

TEMP.

MOIST.

BAROM.

REMARKS

VALLEY  
MOUNTAIN BOULD

ADJUTANT GEN.

**VALUABLE**

RETURN TO  
CARR & J. E.  
GREINER CO.  
JACKSONVILLE,  
N. C.

SUBJECT

Profile of Airport  
Taxiway to Sea Plane  
Warmup Platform

## FIELD PARTY

McClung IN CHARGE  
Banner INSTRUMENT  
McClung NOTES  
Batson TAPE READ  
TAPE OR ROD  
TAPE OR ROD  
INSTRUMENT NO.  
TAPE NO.

## WEATHER

CLEAR  
CLOUDY  
WINDY  
RAIN  
FAIR  
SNOW  
HOT  
MODERATE  
COLD  
FOG  
FIGURED BY  
NOTES CHECKED BY  
PLOTTED BY

FILE No. \_\_\_\_\_

FLDR. No. \_\_\_\_\_

SHEET 2 of 2DATE July 25 1942

STATION	DIST.	ANGLE		+	H. I.	ELEVATION	
		°	"			VER. ANG.	DIFF.

13.34

14+00 39 9.4

15+00 46 8.7

15+47 7.7 5.6 Bottom Ditch

16+00 6.2 7.1

16+38 7.9 5.4 Bottom Ditch

17+00 5.5 7.8

18+00 3.8 9.5

19+00 2.9 10.4

20+00 3.2 10.1

VALUABLE

DATE  
CARE  
ORDER  
NO.

STATION

SUBJECT

ANGLE

ELEVATION

FIELD PARTY

TO BE MADE

DATE

TIME

PLACE

WEATHER

WIND

TEMP

MOON

STATE

FILE NO

DATE

TIME

PLACE

THE NATIONAL BUREAU OF GEOLOGICAL SURVEY  
WASHINGTON, D. C.

*Smith*

# CARR AND J. E. GREINER COMPANY

ARCHITECT-ENGINEERS

MARINE BARRACKS, NEW RIVER, N. C.

SUBJECT

*GLIDER TRAINING BASE - WAY & WARM-UP* SHEET 1 OF 1

COMPUTED BY: *W.R. Cook*

DATE

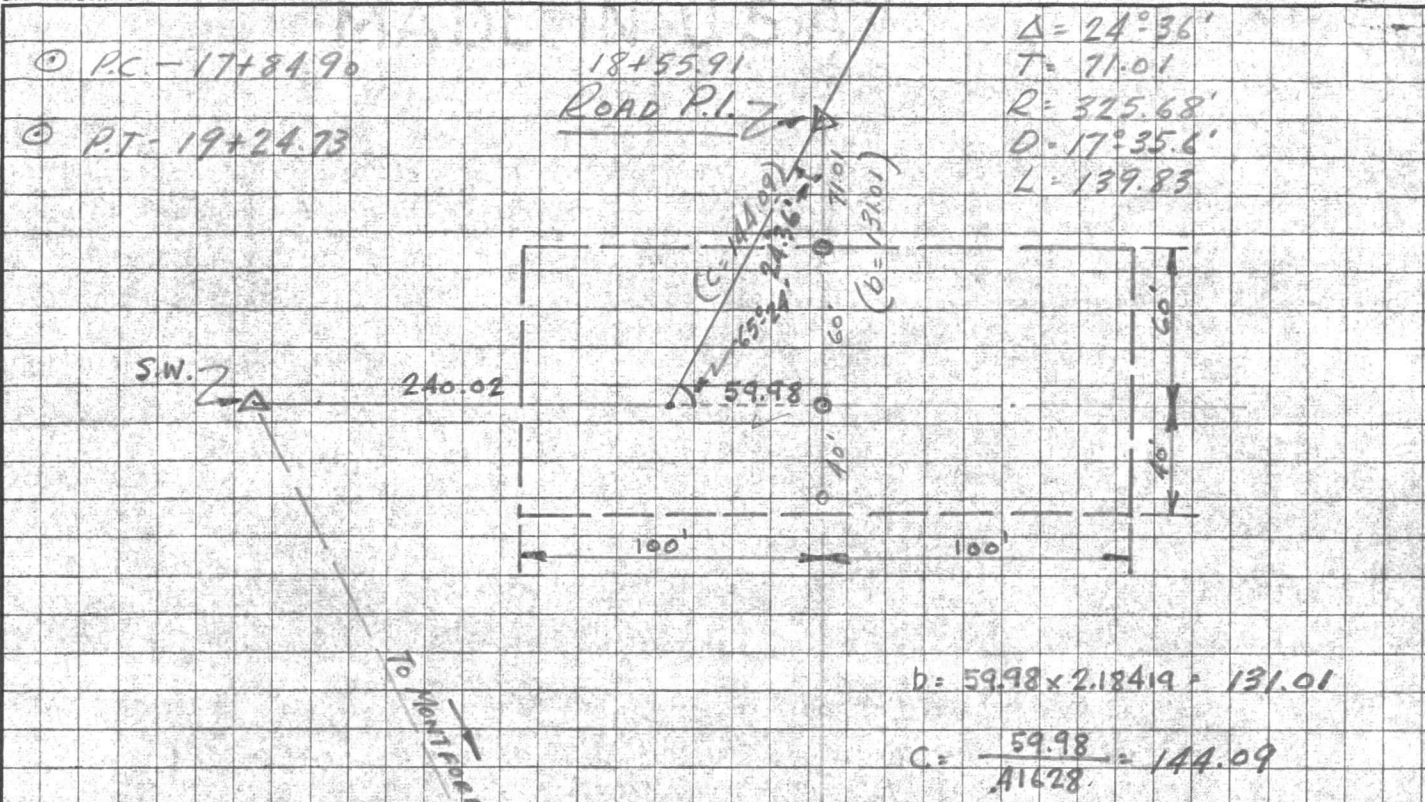
*8-3-42*

CHECKED BY:

*ARRON*

DATE

OWEN G. DUNN CO. 35974-5M 12-41



$\Delta = 24^{\circ}36'$   
 $T = 71.01$   
 $R = 325.68'$   
 $D = 17^{\circ}35.6'$   
 $L = 139.83$

$b = 59.98 \times 2.18419 = 131.01$

$C = \frac{59.98}{.41628} = 144.09$

$R = 71.01 \times \cot 12^{\circ}18' = 325.68$

$D = 17.59266^{\circ} = 17^{\circ}35'36''$

$L = \frac{24.6000}{17.59266} = 139.83$

$\frac{1340}{100} = 13.40$   
 $\frac{255}{15} = 17.00$   
 $\frac{1340}{100} = 13.40$   
 $\frac{255}{15} = 17.00$

— ALTERNATE — ✓

P.I. 18+55.91

$\Delta = 24^{\circ}36'$

$D = 17^{\circ}36'$

$R = 325.54$

$T = 70.98$

$L = 139.77$

P.C. 17+84.93

P.T. 19+24.70

EDGE OF PLATFORM 19+24.73

*19+24*  
*20+24*

CARR AND J. E. GREINER COMPANY

MARINE BARRACKS, NEW RIVER, N. C.

ARCHITECT-ENGINEERS

OF

SHEET

SUBJECT

DATE

CHECKED BY:

DATE

COMPUTED BY:

DESIGNED BY: (mirrored text)

MADE IN U.S.A. (mirrored text)