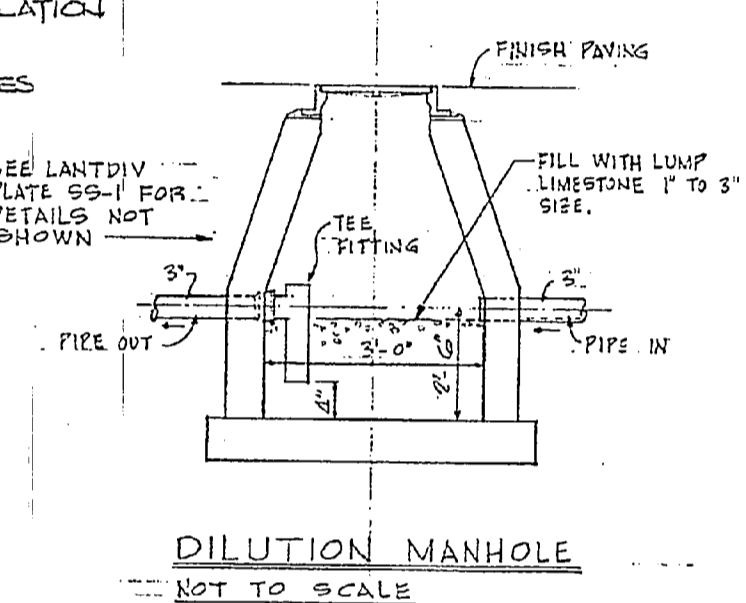
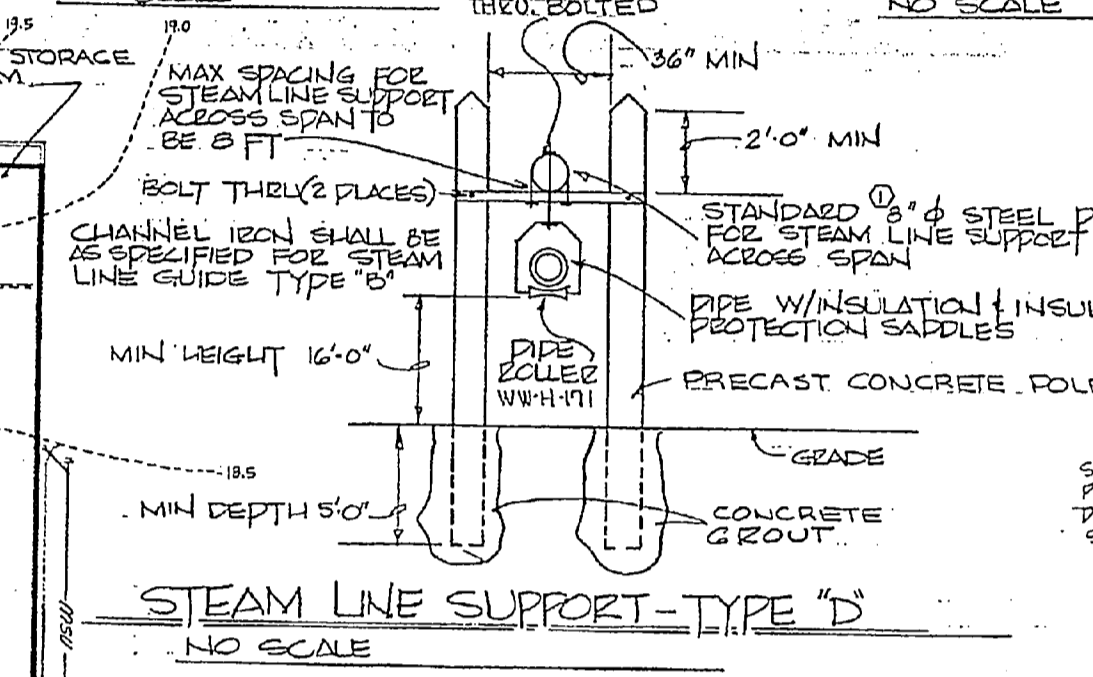
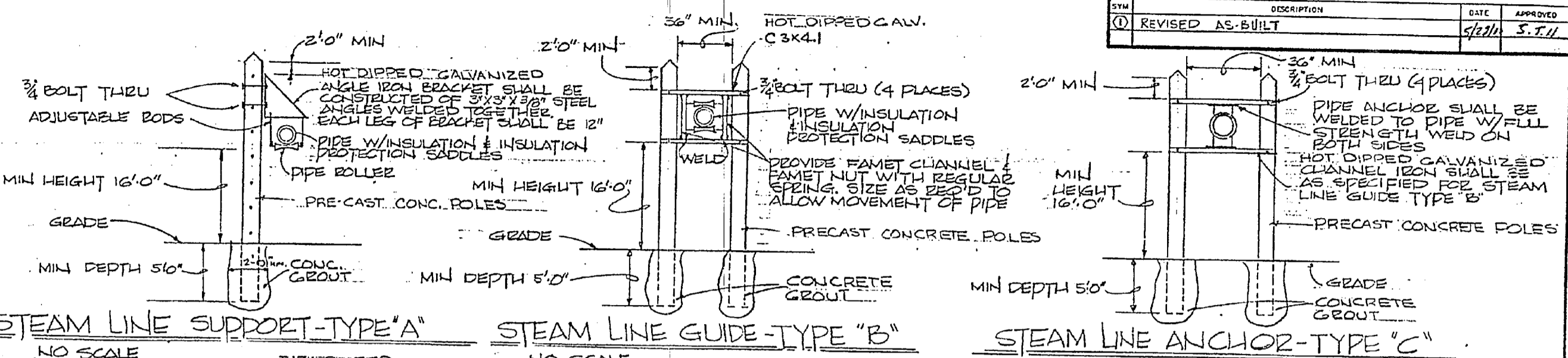
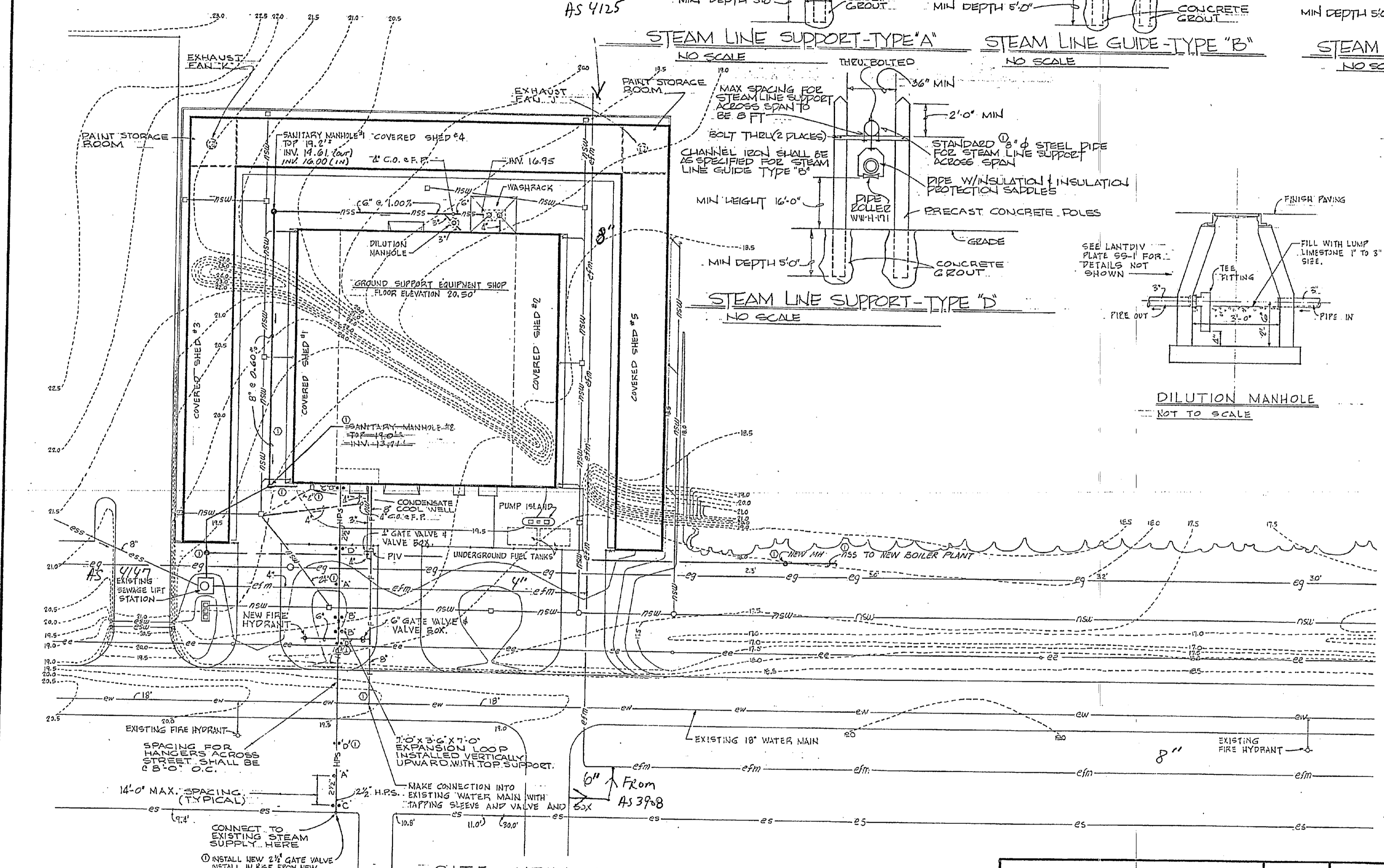


REVISIONS		
NO.	DESCRIPTION	DATE
1	REVISED AS-BUILT	5/27/78



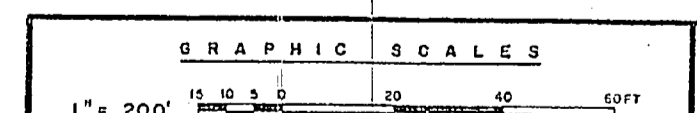
- INSTALLATION DETAILS**
- CLEANOUT: SEE LANTDIV PLATE SS-3.
 - FIRE HYDRANT: SEE LANTDIV PLATE WD-2.
 - THRUST BLOCKS FOR WATER MAINS: SEE LANTDIV PLATE WD-1.
 - MANHOLE: SEE LANTDIV PLATE SS-1.
 - SANITARY MANHOLE: SEE LANTDIV PLATE SS-1.



LEGEND

EXISTING	NEW
— CW —	COLD WATER PIPING — CW
— EG —	AVIATION FUEL PIPING — EG
— ES —	STEAM PIPING (OVERHEAD) — HPS
— EE —	ELECTRIC LINE — NSU
— ESU —	STORM WATER PIPING — NSU
— ESS —	SANITARY SEWER — NSU
— CFM —	FORCE MAIN — F
— F —	FIRE PROTECTION PIPING — F
— H —	FIRE HYDRANT — H
— 13.0 —	CONTOURS — 13.0
— PIV —	POST INDICATOR VALVE — PIV
— C.O. —	CLEANOUT — C.O.
— F.P. —	FINISHED PAVING — F.P.
— D.P. —	DRAINAGE PIPING — D.P.

SITE UTILITIES PLAN
SCALE: 1" = 20'



RECORDED DRAWING
LETTER-DRAWN 16.11.9.1578

FISHEL AND TAYLOR-AIA
RALEIGH, NORTH CAROLINA

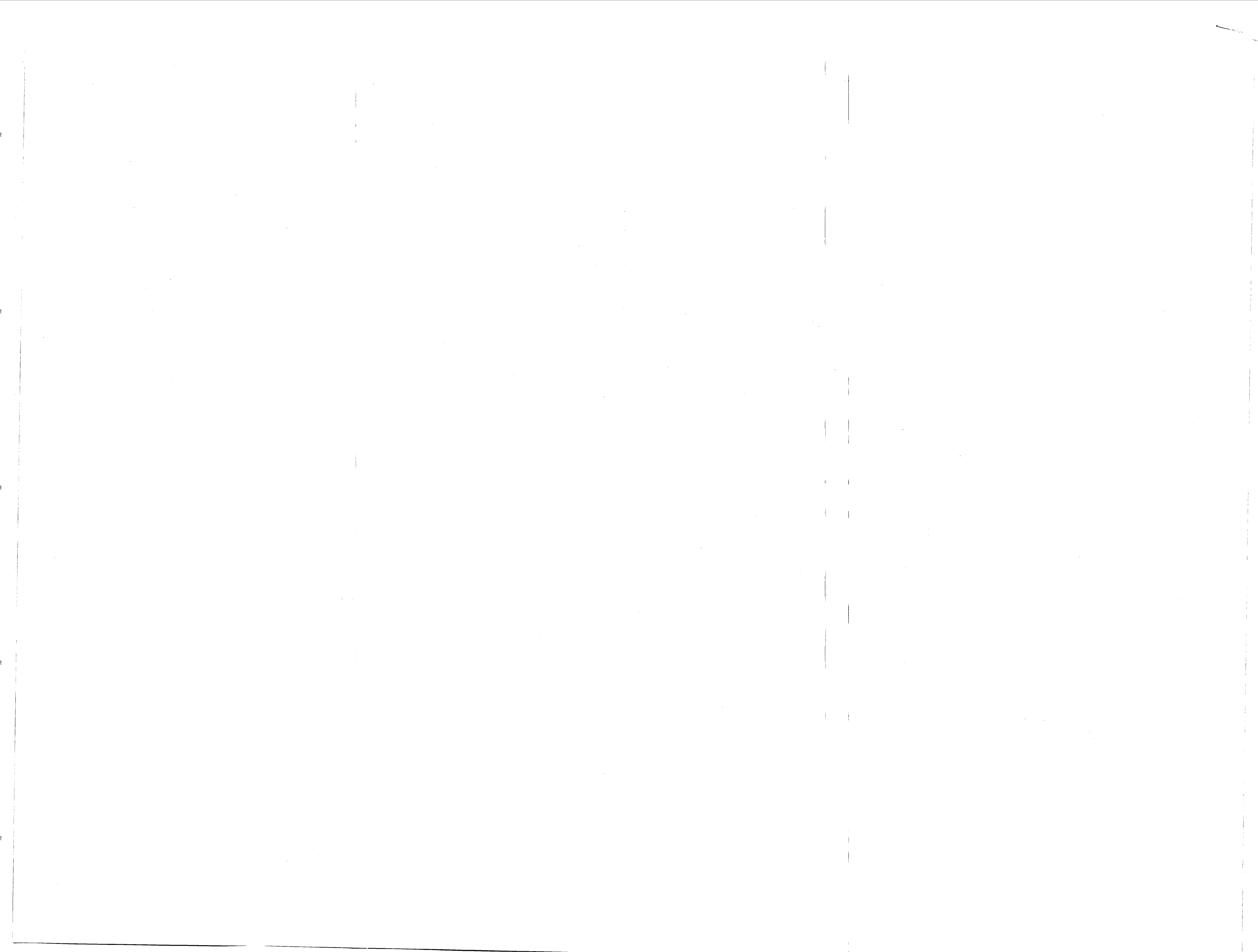
DEPARTMENT OF THE NAVY
NAVAL FACILITIES ENGINEERING COMMAND
ATLANTIC DIVISION

NAVAL STATION
MARINE CORPS AIR STATION (HELICOPTER) - NEW RIVER
CAMP LEJEUNE - NORTH CAROLINA

GROUND SUPPORT EQUIPMENT SHOP & SHED
SITE UTILITIES PLAN-MISCELLANEOUS DETAILS

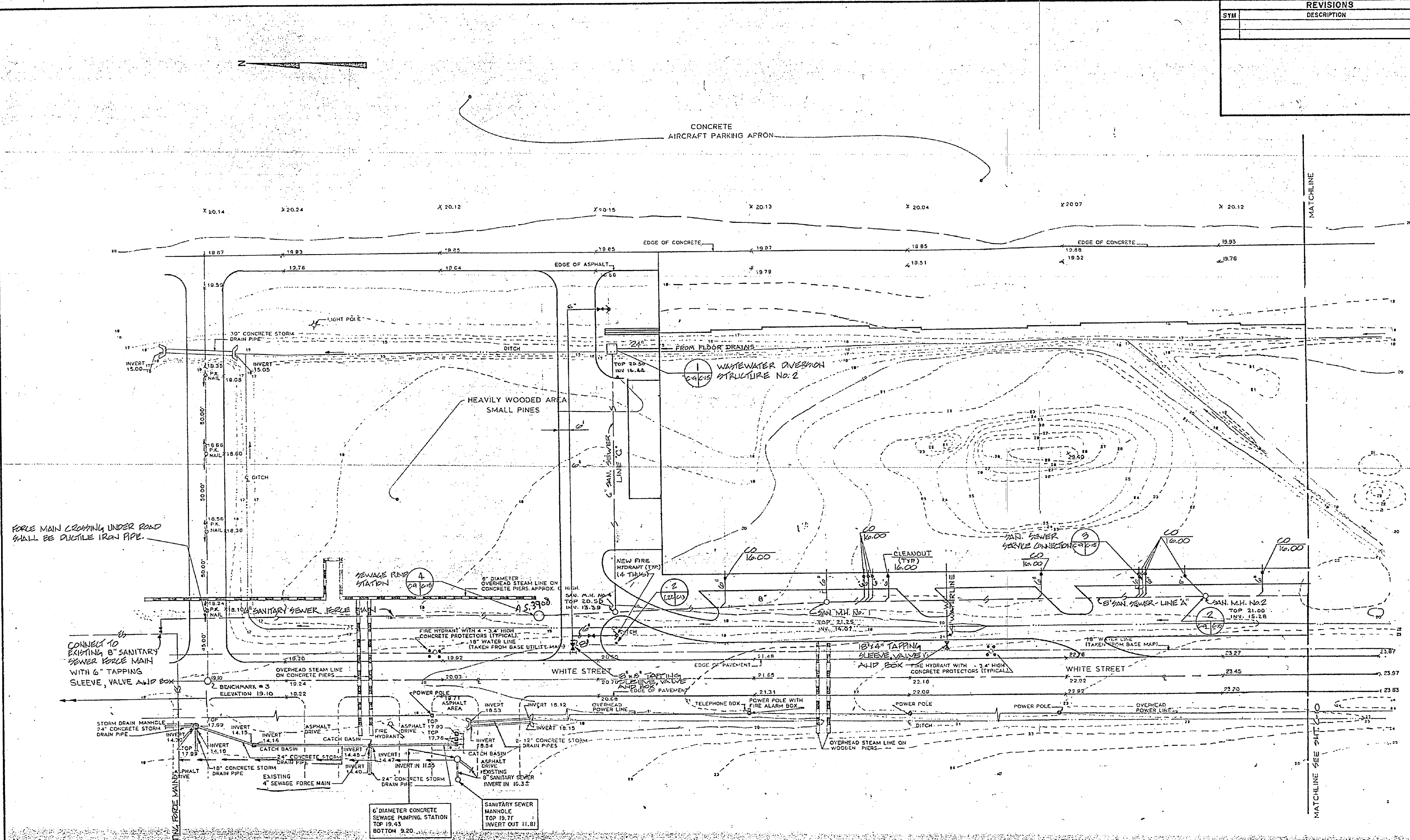
NO. 2112
DATE: 1-9-78
APPROVED: [Signature]
DATE: 1-27-78

PROJECT NO. 4025127
CONTRACT NO. N62470-75-B-5044
SCALE AS NOTED SPEC 05-75-5044 SHEET 4 OF 22
EFD DWG NO. 125127





REVISIONS			
SYM	DESCRIPTION	DATE	APPROVED



FORCE MAIN CROSSING UNDER ROAD SHALL BE DUCTILE IRON PIPE.

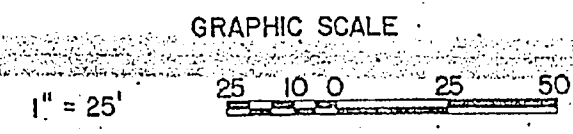
CONNECT TO EXISTING B SANITARY SEWER FORCE MAIN WITH 6" TAPPING SLEEVE, VALVE AND BOX

From AS 4125

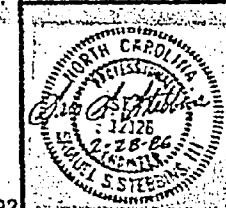
FOR SANITARY SEWER PROFILED SEE SH. C-11 FOR CONTINUATION OF SEWER AND WATER LINES INTO BUILDING, SEE SHEET P1 THRU P4

NOT IN CONTRACT
NOT ISSUED

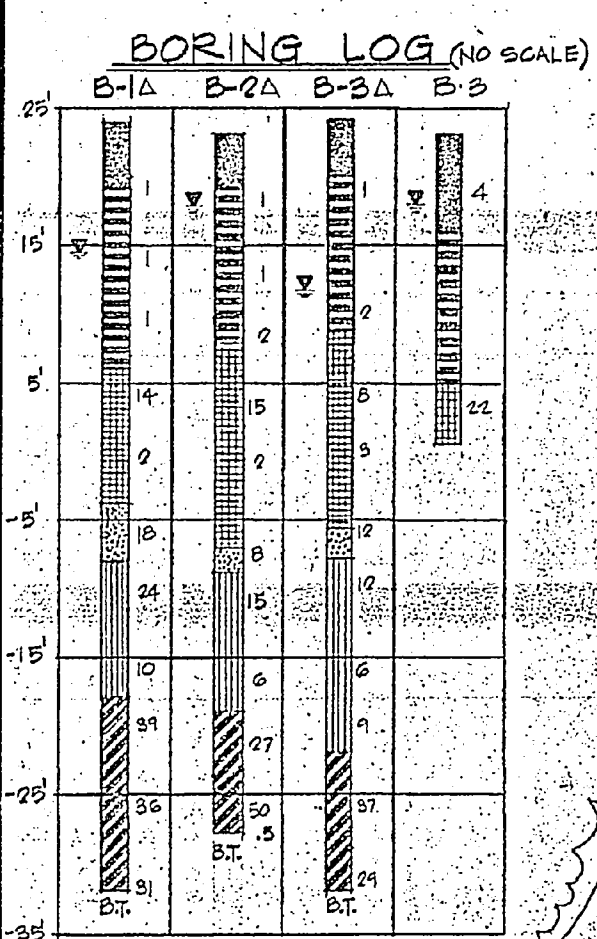
C-22



RECORD DRAWING 17 AUG 1992
F.D. NEW RIVER AIR STATION (H) NO. 2, PAGES 1-43, LETTER DATED



KIMLEY-HORN & ASSOCIATES, INC. RALEIGH, NORTH CAROLINA DESIGNED BY: [Signature] CHECKED BY: [Signature] DATE: [Date]	DEPARTMENT OF THE NAVY NAVAL FACILITIES ENGINEERING COMMAND NAVAL STATION
	ATLANTIC DIVISION MARINE CORPS AIR STATION (H) NEW RIVER, NORTH CAROLINA
MAINTENANCE HANGAR WATER AND SANITARY SEWER PLAN NORTH SECTION-BASE BID WITH ADD. NO. 1	NAVFAC DRAWING NO. 4138773 CONSTRUCTION NO. 62470-B4-B-4174 SCALE: 1"=25' SPEC. 05-84-4174 SHEET 24 OF 129

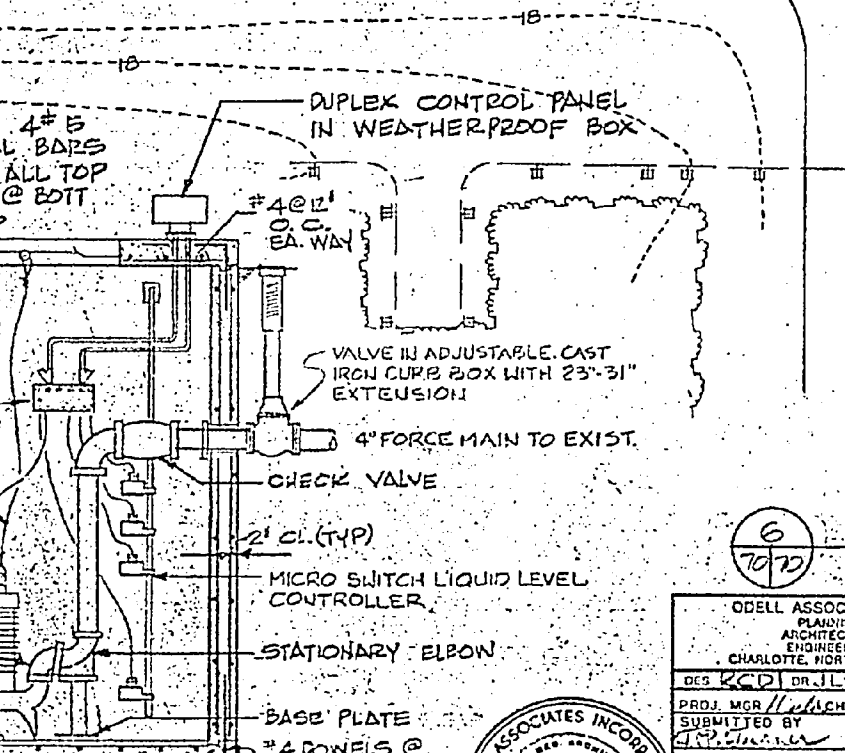
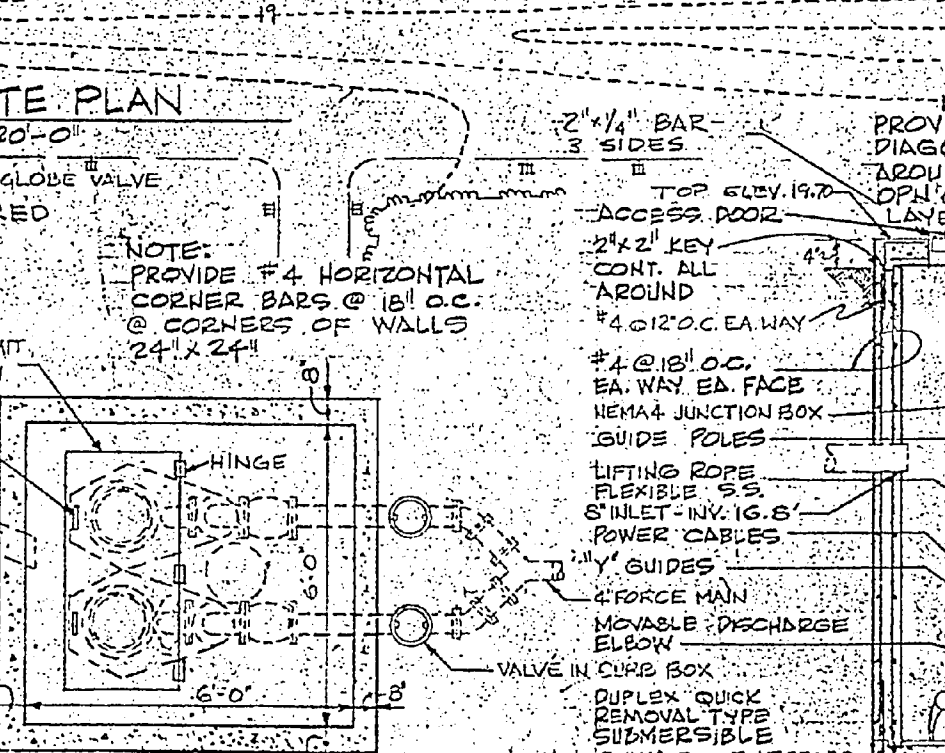
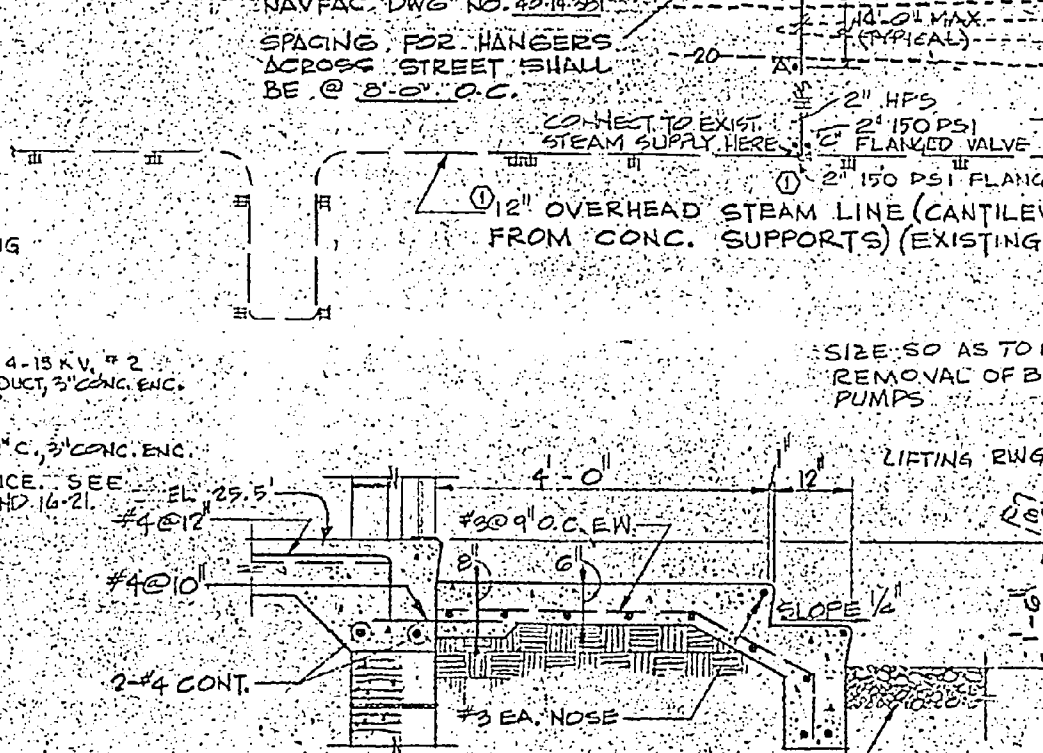
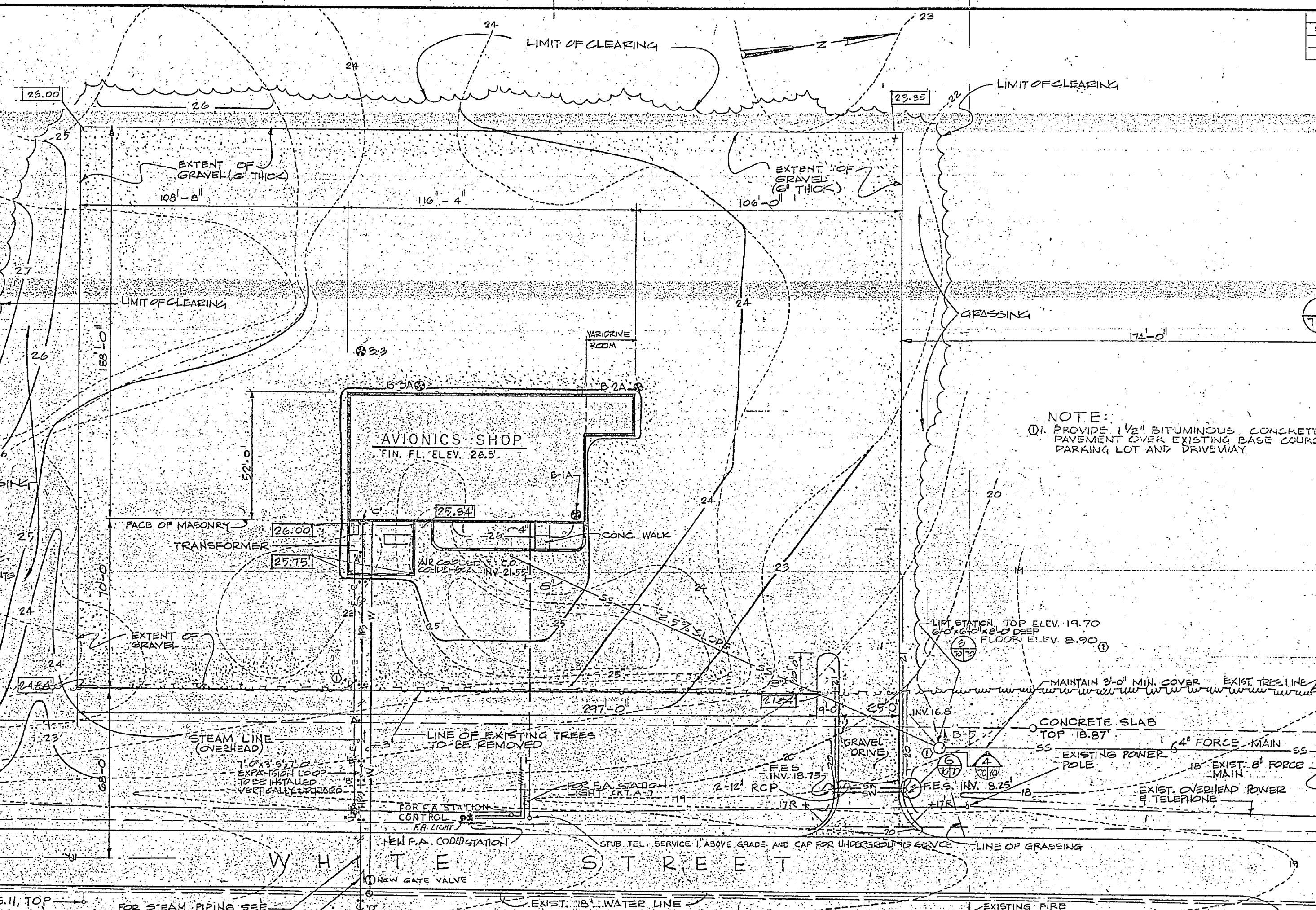


BORING LOG LEGEND

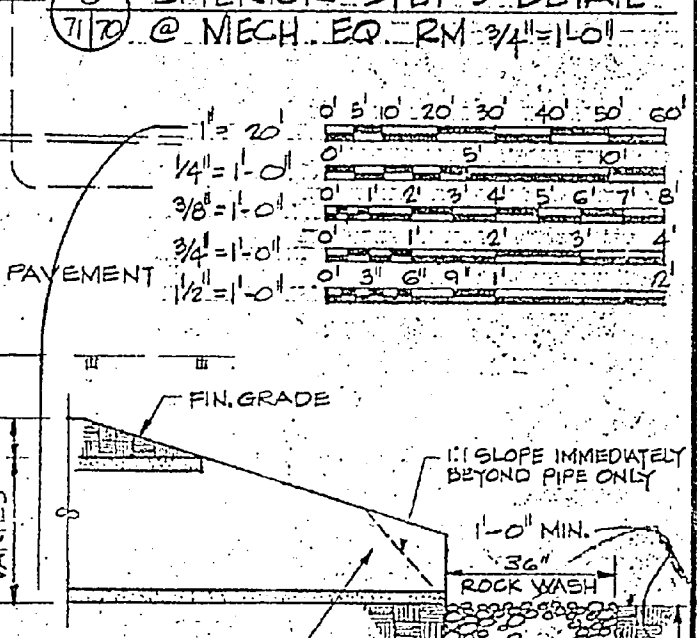
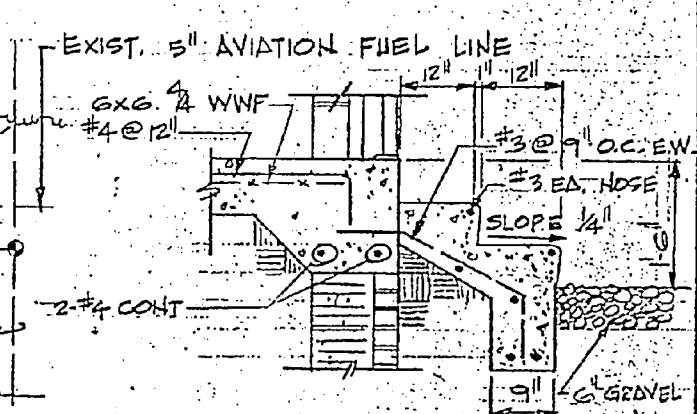
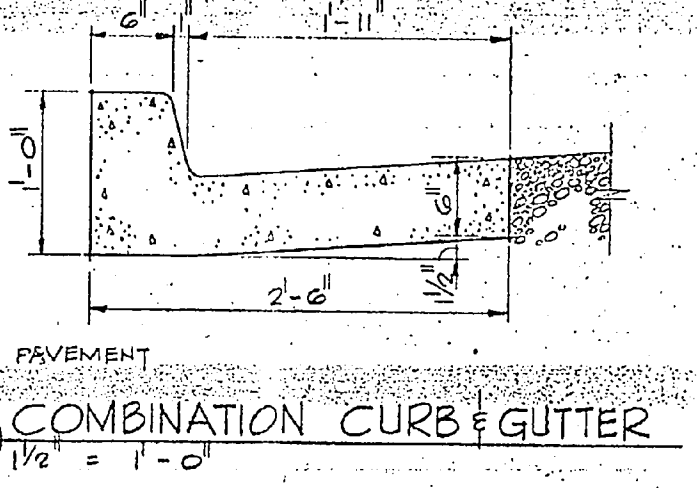
[Symbol] BROWN FINE SAND W/ TRACE OF CLAY & ORGANICS
 [Symbol] GREY PLASTIC CLAY W/ LOCAL FINE SAND
 [Symbol] LIGHT TO DARK GREY FINE TO MEDIUM SAND
 [Symbol] LIGHT GREY SAND W/ NUMEROUS SHELL FRAGMENTS & LOCAL CALCAREOUS CEMENT
 [Symbol] GREY FINE SANDY SILT W/ SHELL FRAGMENTS & LOCAL CALCAREOUS CEMENT
 [Symbol] LIGHT GREY CLAYEY SILT W/ NUMEROUS SHELL FRAGMENTS & LOCAL CALCAREOUS CEMENT
 B.T. BORING TERMINATED
 NOTE: NUMBERS TO RIGHT OF LOG ARE STANDARD PENETRATION RESISTANCES BLOWS/FT
 [Symbol] BORING LOCATION
 [Symbol] GROUND WATER LEVEL
 [Symbol] EXIST. TREE LINE

LEGEND

SS SANITARY SEWER
 SW STORM WATER
 [Symbol] INDICATES CONNECTION OF NEW TO EXISTING
 [Symbol] CONCRETE CURB & GUTTER
 E UNDERGROUND PRIMARY ELECTRICAL SERVICE 4-15 KV, #2 COPPER, XLP 1/4" DUCT AND (1) SPARE #4 DUCT, 3" CONC. ENC.
 T UNDERGROUND TELEPHONE SERVICE, EMPTY 2" C, 3" CONC. ENC.
 [Symbol] NEW 45 CLASS 3 POLE FOR ELECTRIC SERVICE. SEE LAUNDRY PLATES 16-16 AND 16-20 AND 16-21.



SYMBOL	REVISIONS	DATE	APPROVED
A	CHIEF OF DESIGN, PAVING, FLOORING, UTILITIES, AND ELECTRICAL	12/27/75	[Signature]
①	REVISED AS-BUILT	1/27/76	[Signature]



ODELL ASSOCIATES INC. PLANNING AND ENGINEERING CHARLOTTE, NORTH CAROLINA
 DEPARTMENT OF THE NAVY NAVAL FACILITIES ENGINEERING COMMANDANT ATLANTIC DIVISION
 NAVAL STATION NEW RIVER, NORTH CAROLINA
 MARINE CORPS AIR STATION (HELICOPTER) AVIONICS SHOP P-200 JACKSONVILLE, N.C.
 SITE PLAN AND DETAILS
 NAVFAC DRAWING NO. 40-14-870
 F 80091
 SCALE AS SHOWN
 SHEET NO. 2 OF 15
 11/27/75

