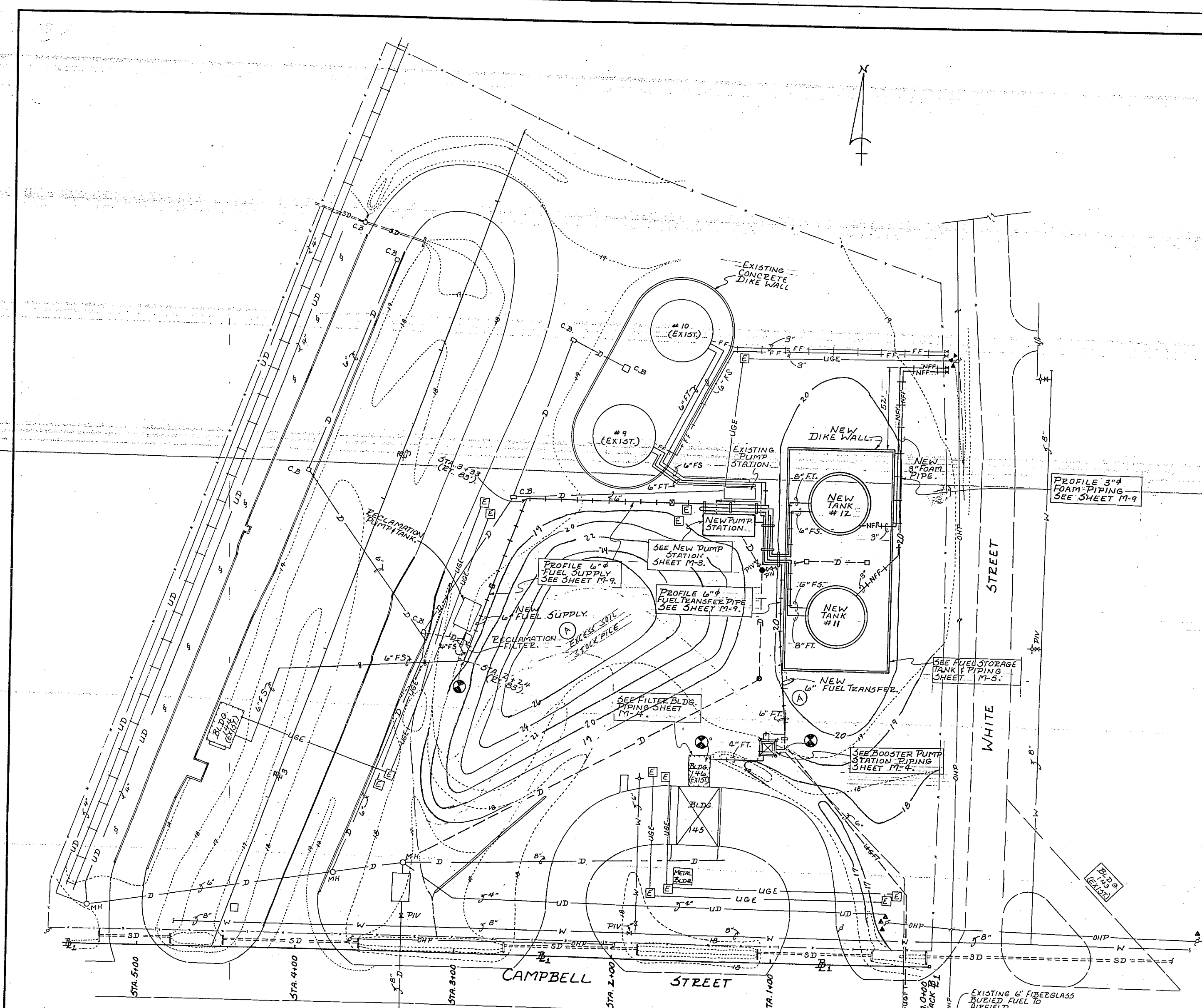


REVISIONS			
SYM	DESCRIPTION	DATE	APPROVED
(A)	Added Soil Stack Pile/Reinwater Fuel Line	8/11/79	gms

LEGEND (MECHANICAL SHEETS)		
EXISTING	DESCRIPTION	NEW
---	CONTOURS (1 FT.)	---
---	CONTOURS (5 FT.)	---
---	SWALE	---
---	STORM DRAIN	---
---	UNDERGROUND ELECTRICAL	---
---	WATER	---
---	OIL WATER DRAIN (BURIED)	---
---	UNDER DRAIN - OIL WATER	---
---	FENCE	---
---	OVERHEAD POWER (ELECTRIC)	---
---	TANK VENT LINE	---
---	POWER POLE	---
---	ELECTRIC MANHOLE	---
---	TRANSFORMER (POLE MOUNTED)	---
---	MANHOLE	---
---	CATCH BASIN/DIKE DRAIN	---
---	FIRE HYDRANT	---
---	GATE VALVE	---
---	SURVEY BASELINE	---
---	BURIED FUEL TRANSFER PIPING	---
---	FUEL PIPING (ON SUPPORTS)	---
---	FUEL SUPPLY	FS
---	FUEL TRANSFER	FT
---	ANCHOR SUPPORT	AS
---	CONCRETE PIPE SUPPORT	CS
---	FOAM PIPING & SUPPORTS	NFF

SYMBOLS & ABBREVIATIONS USED ON MECHANICAL SHEETS M-3 THRU M-9	
---	PIPE LINES 3" & SMALLER
---	PIPE LINES 4" & LARGER
---	WELD NECK FLANGE
---	GATE VALVE
---	DOUBLE BLOCK & BLEED PLUG VALVE
---	BALL VALVE
---	PUMP FLEXIBLE CONNECTION
---	6"-90° (LR) ELBOW (LONG RADIUS)
---	REDUCER
---	CHECK VALVE
---	STRAINER
---	METER
---	RELIEF VALVE
---	PIPE ELBOW DOWN
---	PIPE ELBOW UP
---	BALL JOINT
---	DIAMETER
---	CENTERLINE
---	FILTER / SEPARATOR
---	POST INDICATOR VALVE
---	CONNECT TO EXISTING CONDUIT
---	SLUG VALVE
---	WELD NECK FLANGE
---	SLIP-ON FLANGE



**TANK FARM PIPING PLAN - NEW CONFIGURATION**  
SCALE: 1" = 25'-0"

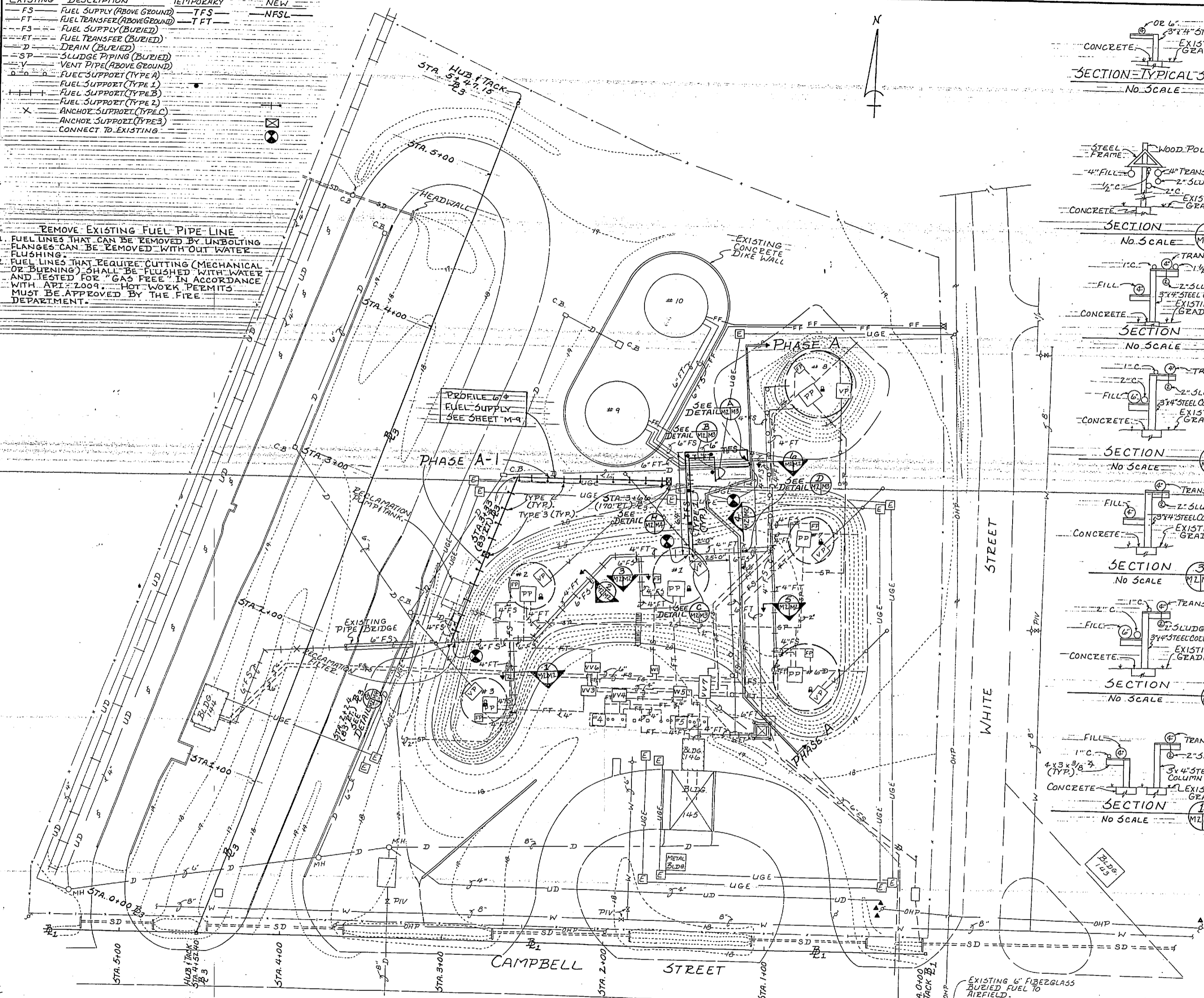
RECORD DRAWING LETTER DATED 8/11/79		M-1
AUSTIN BROCKENBROUGH AND ASSOCIATES CONSULTING ENGINEERS SHEETS DIVISION		DEPARTMENT OF THE NAVY NAVAL FACILITIES ENGINEERING COMMAND ATLANTIC DIVISION
JOB ORDER NO. 264666 STL PROJ. NO. NR-5031M SEA. WFB PROJ. MGR. WFB SFD RVD DES. MGR. WFB APPROVED: [Signature] DATE: 8/11/79		NAVAL STATION MARINE CORPS AIR STATION NEW RIVER, NORTH CAROLINA
REPLACE FUEL STORAGE TANKS FUEL PIPING PLAN - NEW CONFIGURATION		NAVFAC DRAWING NO. 4164666
ACTIVITY-SATISFACTORY TO APPROVED: [Signature] DATE: 8/11/79		SIZE: F 80091 CONST. CONTR. NO. 1152470-87-B-7067 SCALE AS NOTED SPEC. 05-87-7067 SHEET 7 OF 26



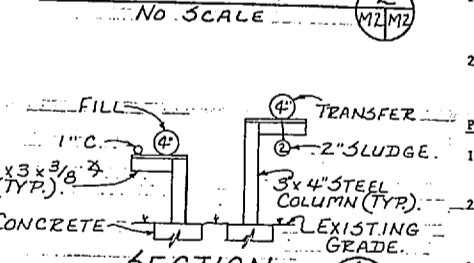
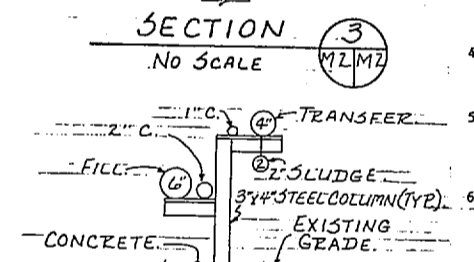
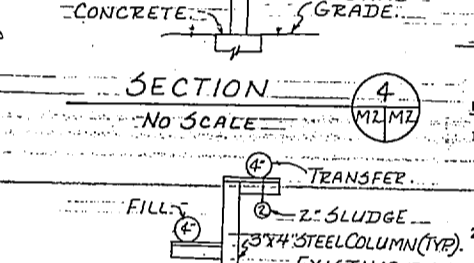
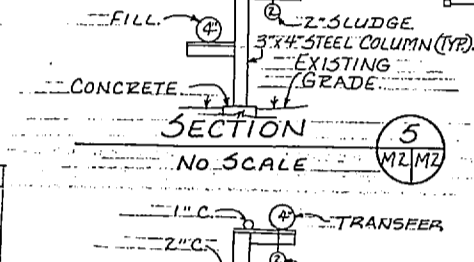
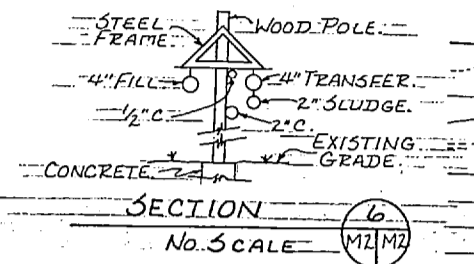
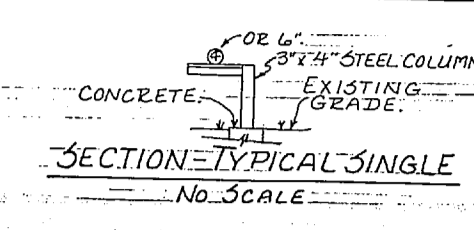


EXISTING	DESCRIPTION	TEMPORARY	NEW
FS	FUEL SUPPLY (ABOVE GROUND)	TFS	NFSL
FT	FUEL TRANSFER (ABOVE GROUND)	TFT	NFTL
FS	FUEL SUPPLY (BURIED)		
FT	FUEL TRANSFER (BURIED)		
D	DEBRIS (BURIED)		
SP	SLUDGE PIPING (BURIED)		
V	VENT PIPE (ABOVE GROUND)		
FS	FUEL SUPPORT (TYPE A)		
FS	FUEL SUPPORT (TYPE 1)		
FS	FUEL SUPPORT (TYPE 2)		
AS	ANCHOR SUPPORT (TYPE A)		
AS	ANCHOR SUPPORT (TYPE B)		
X	ANCHOR SUPPORT (TYPE C)		
	CONNECT TO EXISTING		

REMOVE EXISTING FUEL PIPE LINE  
 1. FUEL LINES THAT CAN BE REMOVED BY UNBOLTING FLANGES CAN BE REMOVED WITH OUT WATER FLUSHING.  
 2. FUEL LINES THAT REQUIRE CUTTING (MECHANICAL OR BUENING) SHALL BE FLUSHED WITH WATER AND TESTED FOR "GAS FREE" IN ACCORDANCE WITH API 2009. HOT WORK PERMITS MUST BE APPROVED BY THE FIRE DEPARTMENT.



DEMOLITION PLAN - FUEL PIPELINE & TANKS  
 SCALE: 1" = 25'-0"

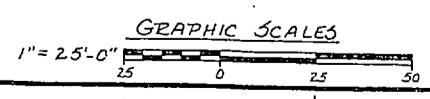


SYMBOL	DESCRIPTION	DATE	APPROVED

EXISTING	DESCRIPTION	NEW
CONTOURS (1 FT)		
CONTOURS (5 FT)		
SWALE		
STORM DRAIN		
UNDERGROUND ELECTRICAL		
WATER		
OIL WATER DRAIN		
UNDER DRAIN - OIL WATER		
FENCE		
OVERHEAD POWER (ELECTRIC)		
TANK VENT LINE (WITH SUPPORTS)		
POWER POLE		
ELECTRIC MANHOLE		
TRANSFORMER (POLE MOUNTED)		
MANHOLE		
CATCH BASIN		
PUMP PIT		
FILL PIT		
VENT PIT		
CONCRETE STEP		
FIRE HYDRANT		
GATE VALVE PIV		
POWER SUPPORT		
VALVE PIT		
FOAM PIPING		

- PHASE A - PREPARING SITE FOR NEW TANK CONSTRUCTION
1. PROVIDE PIPE SUPPORTS AND PIPING FOR TEMPORARY FUEL SUPPLY AND FUEL TRANSFER PIPING AS INDICATED.
  2. COMPLETE CONNECTIONS AS INDICATED BY DETAILS A, B, C AND D WHEN THE FUEL DEPOT IS READY FOR A 24-HOUR SUBSTATION TO COMPLETE THE TEMPORARY CONNECTIONS.
  3. REMOVE ALL ABOVE GROUND 6-INCH, 4-INCH AND 2-INCH FUEL SUPPLY, TRANSFER, SLUDGE AND VENT PIPING, PIPE SUPPORTS, VALVES, AND ELECTRICAL SERVICES TO THE EAST OF THE PHASE A LINE TO FENCE LINE ALONG WHITE STREET. ALL LINE VALVES SHALL BE SALVAGED AND RETURNED TO THE GOVERNMENT.
  4. REMOVE THE EARTH COVERING OVER TANKS 6, 7 AND 8 AND REMOVE THE ABANDONED BURIED FUEL SUPPLY, FUEL TRANSFER, SLUDGE PIPE, AND PIT GRAVITY DRAIN PIPE. PROVIDE SEALING PUGS IN THE ENDS OF EACH PIPE THAT IS CUT.
  5. REMOVE PUMPS, PIPING, ELECTRICAL EQUIPMENT, CONDUIT AND WIRING FROM THE PUMP PITS, FILL PITS, AND VENT PITS ON TANKS 6, 7 AND 8. ALL PUMPS, VALVES, AND ELECTRICAL MOTOR STARTERS SHALL BE RETURNED TO THE GOVERNMENT.
  6. CLEAN TANKS 6, 7 AND 8 OF ALL PETROLEUM PRODUCTS IN ACCORDANCE WITH SECTION 1557 "CLEANING PETROLEUM STORAGE TANKS." AFTER THE TANKS ARE CLEANED THEY SHALL BE DEMOLISHED AND REMOVED DOWN TO THE FILL SUPPORTED CONCRETE FOUNDATION AS INDICATED BY DETAILS E AND F.
- PHASE A-1 (PREPARATORY WORK)
1. PROVIDE THE NEW 6-INCH FUEL SUPPLY PIPE LINE AND SUPPORT FROM THE OVERHEAD PIPELINE ADJACENT TO THE RECLAMATION PIT (DETAIL G) TO THE PLANNED CONNECTION ADJACENT TO THE ELECTRICAL MANHOLE BY TANK 9 (DETAIL H).
  2. COMPLETE THE PIPE CONNECTIONS AT DETAIL G AND DETAIL H WHEN THE NEW TANKS 11 AND 12, PUMP STATION, PIPING, ELECTRICAL SERVICES, AND OTHER ASSOCIATED WORK IS COMPLETE AND READY FOR USE.
- PHASE B
1. REMOVE ALL THE PIPE AND PIPE SUPPORTS FOR THE TEMPORARY FUEL SUPPLY AND TRANSFER CONNECTIONS PROVIDED AT PHASE A-1.
  2. REMOVE ALL 6-INCH, 4-INCH AND 2-INCH FUEL SUPPLY, TRANSFER AND SLUDGE PIPE, PIPE SUPPORTS, VALVES, AND ELECTRICAL SERVICES FOR TANKS 1, 2, AND 3. ALL LINE VALVES SHALL BE SALVAGED AND RETURNED TO THE GOVERNMENT.
  3. REMOVE THE EARTH COVERING OVER TANKS 1, 2, 3 AND 4 AND REMOVE THE ABANDONED BURIED FUEL SUPPLY, TRANSFER, SLUDGE, AND PIT GRAVITY DRAIN, INCLUDING VALVE PITS 2, 3, 4, 5, 6 AND 7 IN THE AREA WEST OF PHASE A LINE. REMOVE THE CONCRETE VALVE PITS 2, 3, 4, 5, 6 AND 7 AS SHOWN ON SHEET M-8.
  4. REMOVE PUMPS, PIPING, ELECTRICAL EQUIPMENT, CONDUIT AND WIRING FROM THE PUMP PIT, FILL PIT, AND VENT PITS ON TANKS 1, 2, 3, 4, AND 5. ALL PUMPS, VALVES, AND ELECTRICAL MOTOR STARTERS SHALL BE RETURNED TO THE GOVERNMENT.
  5. CLEAN TANKS 1, 2, 3, 4, AND 5 OF ALL PETROLEUM PRODUCTS IN ACCORDANCE WITH SECTION 1557 "CLEANING PETROLEUM STORAGE TANKS." AFTER TANKS 1, 2, AND 3 ARE AS INDICATED BY DETAILS F AND G, TANK 4 SHALL BE SHOWED FROM THE CONCRETE SADDLES WHICH SHALL REMAIN AS INDICATED ON DETAIL G. TANK 5 SHALL BE FILLED WITH CLEAN SAND COMPACTED TO 85% COMPACTION TO THE TOP OF THE MANHOLE.
  6. BACKFILL AND COMPACT THE TANK HOLES USING THE AVAILABLE SITE MATERIALS THAT ARE OIL SATURATED. EXCESS OIL SATURATED SOIL SHALL BE DISPOSED OF AS SPECIFIED. REMOVE THE FENCE AREA TO THE CONTOURS INDICATED ON THE SITE PLAN ON SHEET C-1, AND ESTABLISH TIE AS SPECIFIED IN SECTION 0545 "TIE".

<b>RECORD DRAWING</b> LETTER DATED		<b>M-2</b>	
AUSTIN BROCKENBROUGH AND ASSOCIATES CONSULTING ENGINEERS NORFOLK, VIRGINIA		DEPARTMENT OF THE NAVY NAVAL FACILITIES ENGINEERING COMMAND ATLANTIC DIVISION NAVAL STATION MARINE CORPS AIR STATION NEW RIVER, NORTH CAROLINA	
JOB ORDER NO. 264857 STA. PROJ. NO. NR-5031M DES. W.F.B. PROJ. MGR. W.F.B. P.D. RVD DR. W.M. DATE		REPLACE FUEL STORAGE TANKS FUEL PIPING & TANK DEMOLITION PLAN	
ACTIVITY-SATISFACTORY TO DATE		SIZE CODE IDENT NO. NAVFAC DRAWING NO. F 80091 4164667	
APPROVED WILLIAM F. HILL REGISTERED PROFESSIONAL ENGINEER NO. 4365		CONSTR. CONTR. NO. N62470-67-B-7067 SCALE AS NOTED SPEC. 05-87-7067 SHEET 8 OF 26	



Campbell Street Fuel Farm

