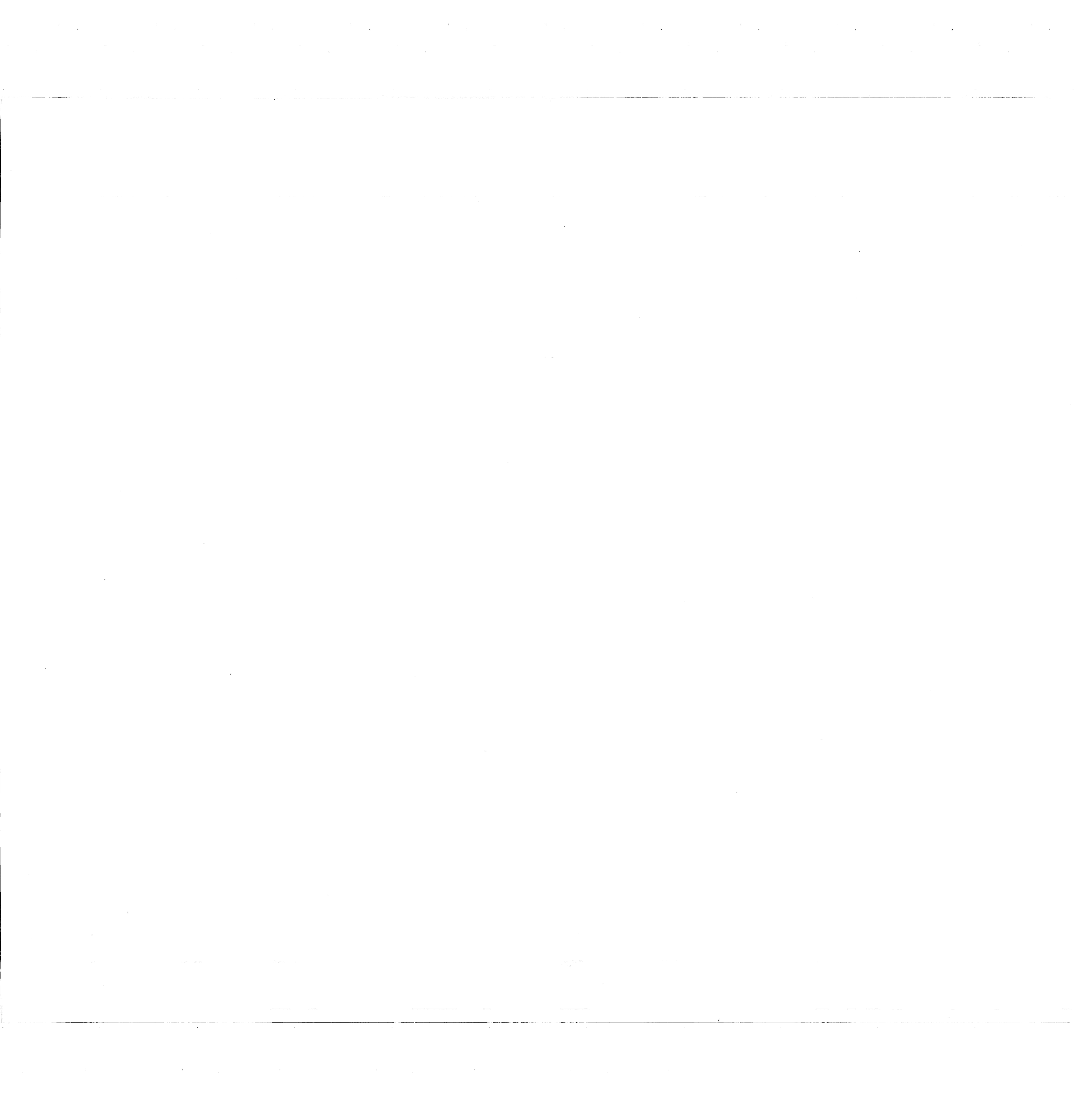


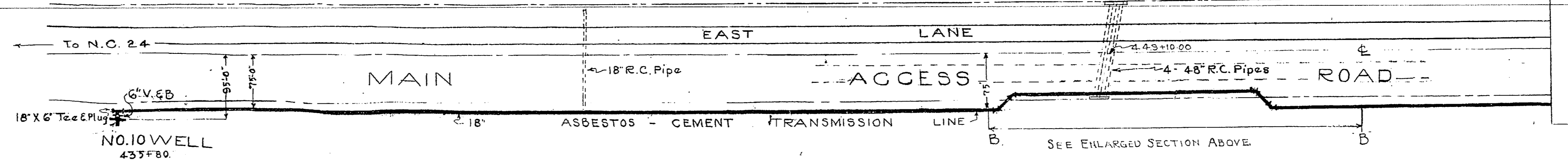
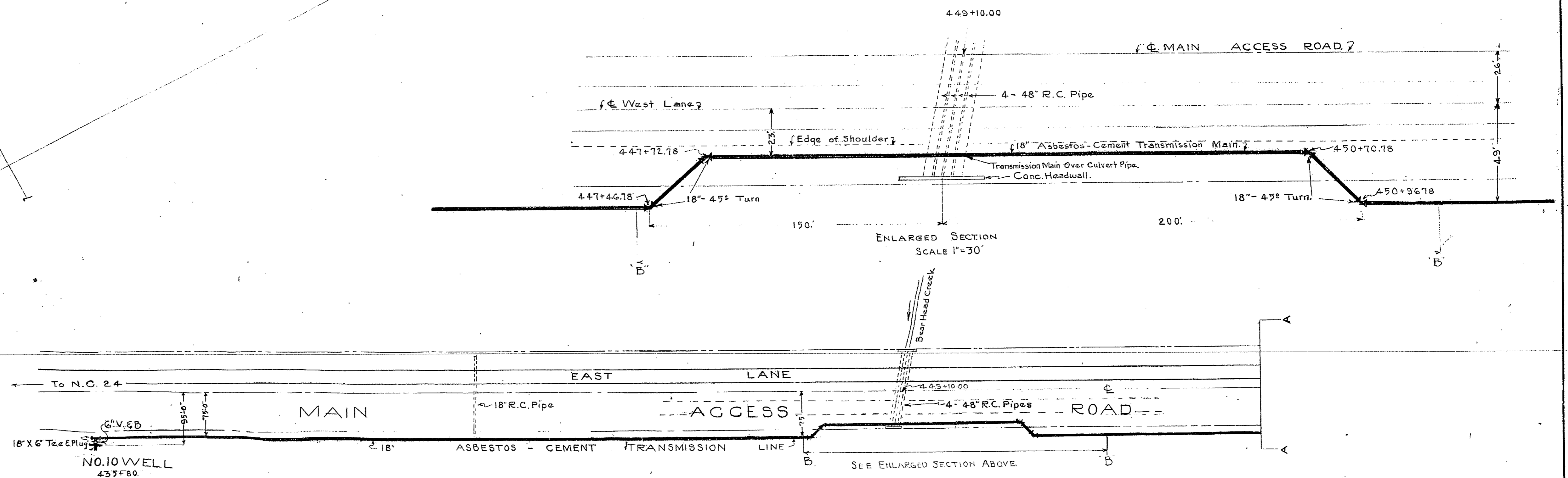
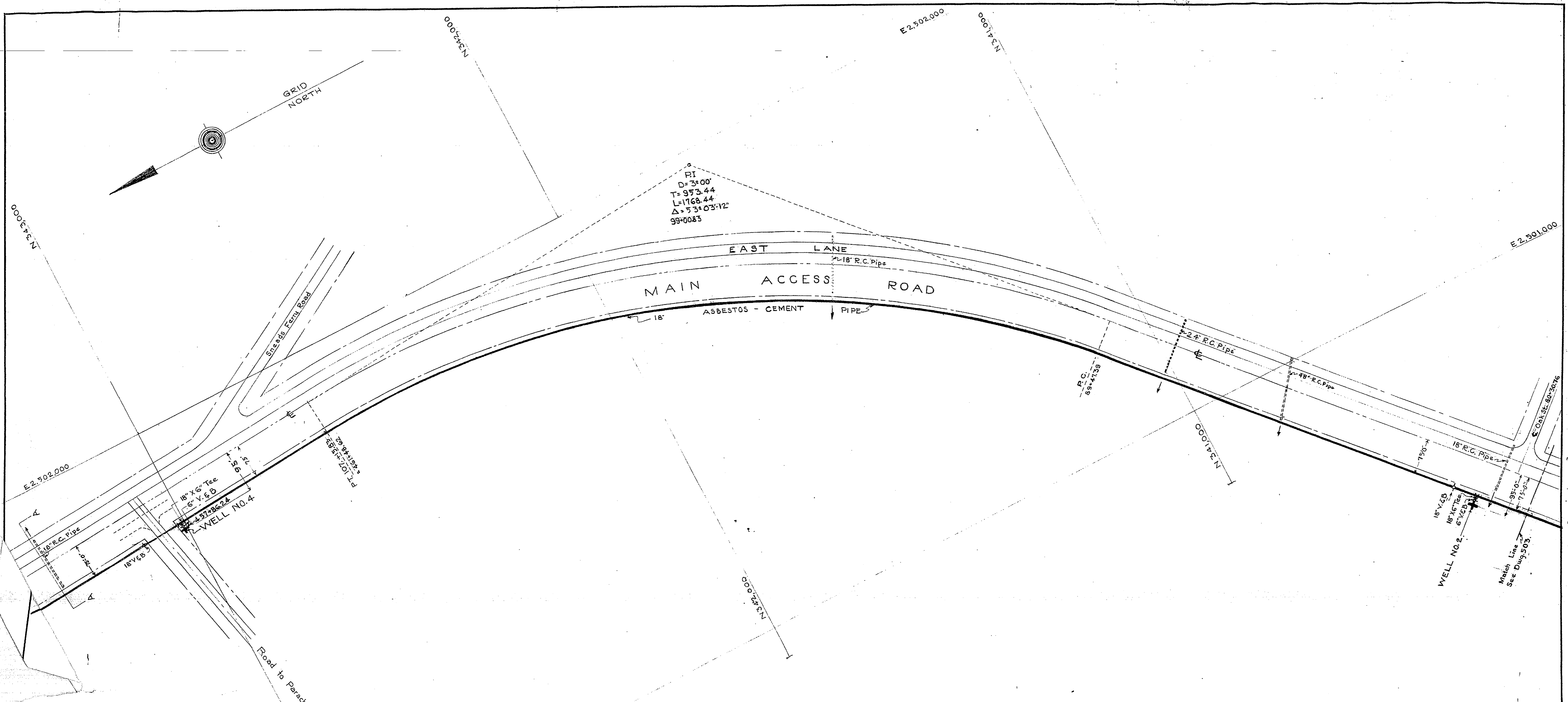
NOTE:
 Air relief valves as called for in Spec. 501-Project P-108-4, Paragraph 31, Page 13, shall be placed at all high points as determined by profiles after pipe is laid.

REVISION A
 JULY 21, 1942

DRAWN BY: W.G.W.	CARR & J. E. GREINER CO.—ARCHITECT-ENGINEERS
TRACED BY: W.G.W.	DURHAM, N. C. BALTIMORE, MD.
CHECKED BY: W.G.W.	MARINE BARRACKS—NEW RIVER, N. C.
CHIEF DEPT. FDK	BUREAU OF YARDS AND DOCKS—U. S. NAVY
IN CHARGE: W.C.M.	
DATE: MAR. 20, 1942	
SCALE: 1" = 100'	
Y. & D. DRAWING NO. 162247	
APPROVED: [Signature]	MEMBER OFFICER IN CHARGE

REVISION	DATE	DESCRIPTION	BY
A	7-21-42	Dimensions for B Well Water Transmission over Cagin Creek Bridge & Blow Off at Bridge	WGW





DRAWN BY: W.G.W.
 TRACED BY: W.G.W.
 CHECKED BY: F.D.K.
 CHIEF DPMN: F.D.K.
 IN CHARGE: W.C.M.
 DATE: MAR. 50 - 1942
 SCALE: 1" = 100'
 Y. & D. DRAWING NO.: 162248

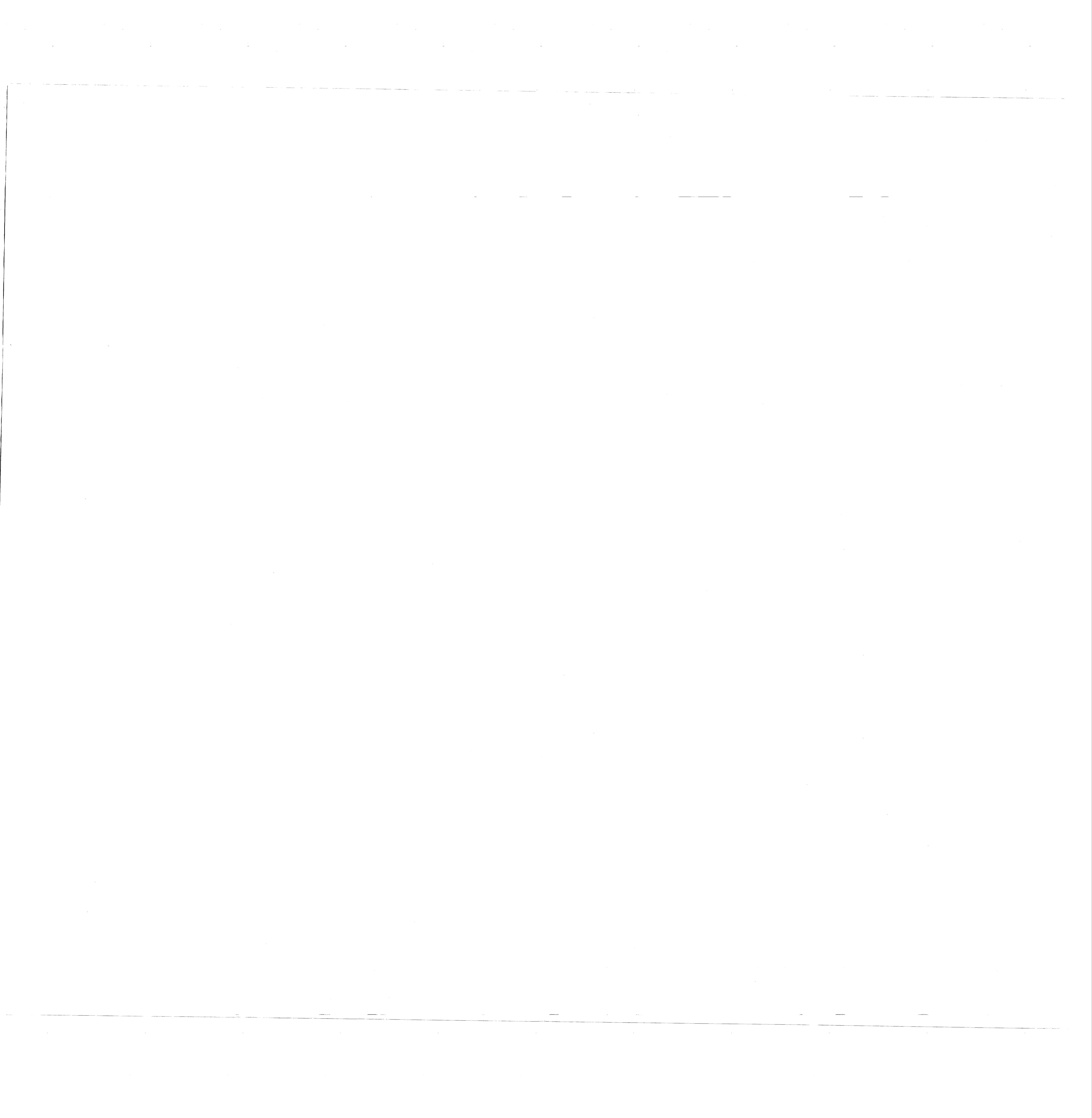
CARR & J. E. GREINEF CO. - ARCHITECT-ENGINEERS
 DURHAM, N. C. BALTIMORE, MD.
MARINE BARRACKS - NEW RIVER, N. C.
 BUREAU OF YARDS AND DOCKS - U. S. NAVY

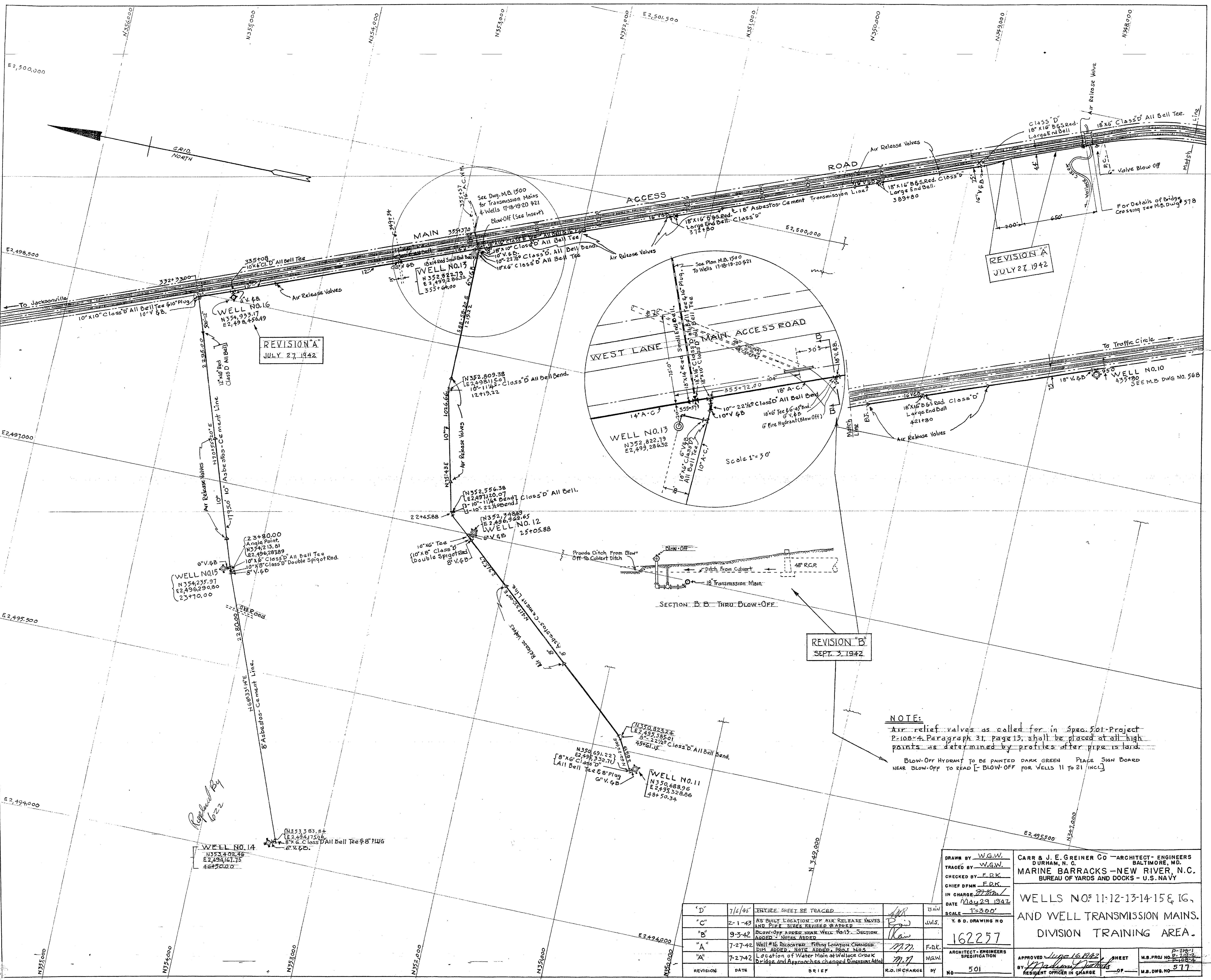
WELLS NO. 2, 4, & 10 AND WELL
 TRANSMISSION MAIN
 DIVISION TRAINING AREA

APPROVED: *[Signature]* SHEET
 BY: *[Signature]* RESIDENT OFFICER IN CHARGE - OF - N.B. PROJ. NO. P-108-4
 N.B. DWS. NO. 568

REVISION	DATE	BRIEF	R.O. IN CHARGE	BY

PRINTED ON 1911 TRACING PAPER
 EUGENE DITZGEN CO. CHICAGO - NEW YORK

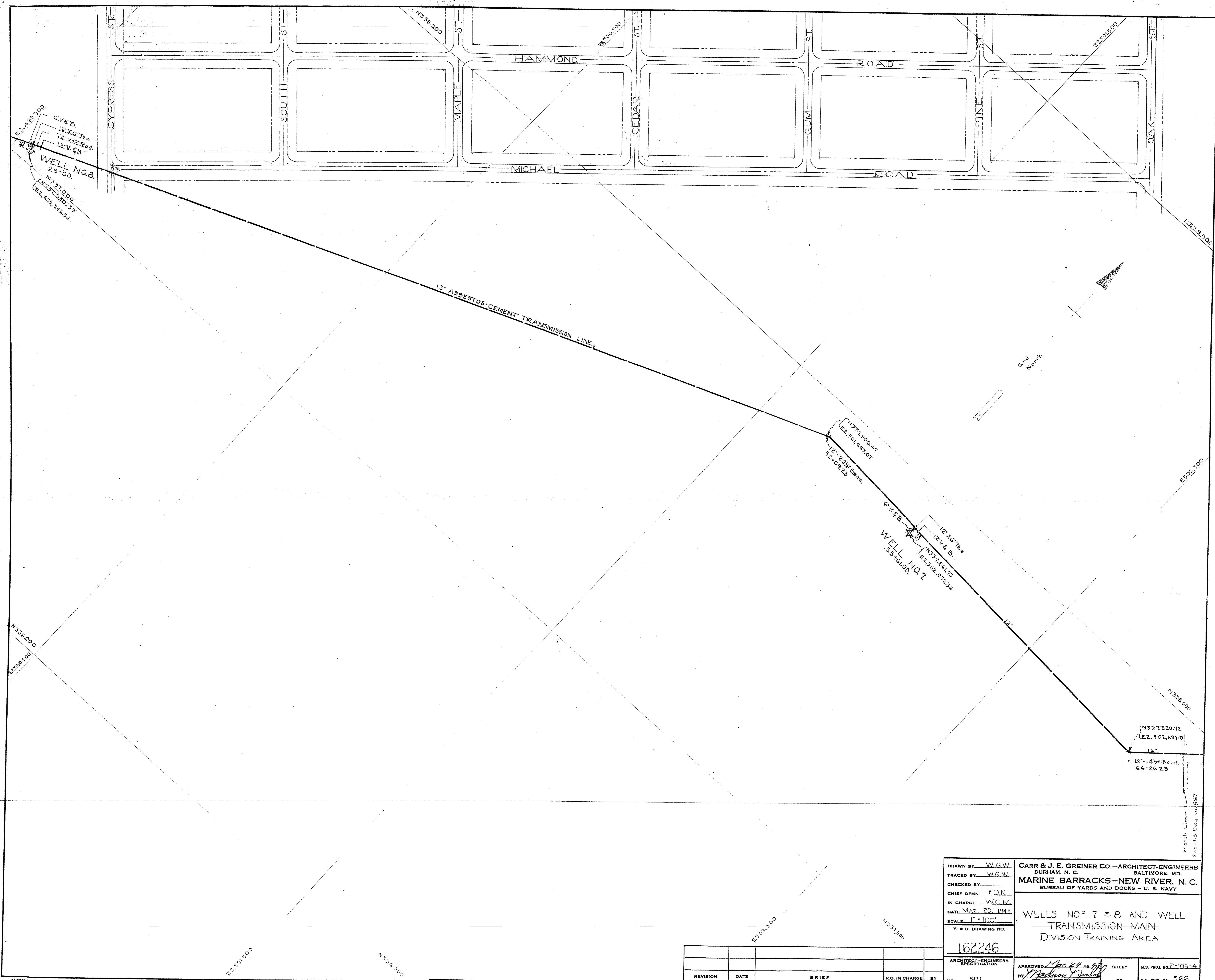




NOTE:
 Air relief valves as called for in Spec. 501-Project 2-108-4, Paragraph 31, page 13, shall be placed at all high points as determined by profiles after pipe is laid.
 Blow-Off Hydrant to be painted dark green. Place sign board near blow-off to read "BLOW-OFF FOR WELLS 11 TO 21 INCL."

DRAWN BY <i>W.G.W.</i> TRACED BY <i>W.G.W.</i> CHECKED BY <i>F.R.K.</i> CHIEF ENGR. <i>F.R.K.</i> IN CHARGE <i>F.R.K.</i> DATE <i>May 29 1942</i>	CARR & J. E. GREINER CO - ARCHITECT-ENGINEERS DURHAM, N. C. MARINE BARRACKS - NEW RIVER, N. C. BUREAU OF YARDS AND DOCKS - U. S. NAVY
WELLS NO'S 11-12-13-14-15 & 16, AND WELL TRANSMISSION MAINS. DIVISION TRAINING AREA.	APPROVED <i>July 16 1942</i> BY <i>Madison J. Smith</i> RESIDENT OFFICER IN CHARGE
SHEET NO. 501	M.B. PROJ. NO. 2-108-4 M.B. DWG. NO. 577

REVISION	DATE	BRIEF	R.O. IN CHARGE	BY
"D"	7/6/42	ENTIRE SHEET BE TRACED		<i>W.G.W.</i>
"C"	2-1-42	AS BUILT LOCATION OF AIR RELEASE VALVES AND PIPE SIZES REVISED DRAWN		<i>J.W.S.</i>
"B"	9-3-42	BLOW-OFF ADDED NEAR WELL NO. 13. SECTION ADDED. NOTES ADDED.		<i>W.G.W.</i>
"A"	7-27-42	Well #16 Relocated - Fitting Location Changed. DIM. ADDED. NOTE ADDED. DIST. N.O.S. Location of Water Main at Wallace Creek Bridge and Approaches changed Dimensions Added.		<i>F.R.K.</i>
"A"	7-27-42			<i>W.G.W.</i>



100
See attached map.

DRAWN BY: <u>W.G.W.</u> TRACED BY: <u>W.G.W.</u> CHECKED BY: _____ CHIEF DFMN: <u>F.D.K.</u> IN CHARGE: <u>W.C.M.</u> DATE: <u>MAR. 20, 1942</u> SCALE: <u>1" = 100'</u> Y. & D. DRAWING NO.: <u>162246</u>	CARR & J. E. GREINER CO. - ARCHITECT-ENGINEERS DURHAM, N. C. BALTIMORE, MD. MARINE BARRACKS-NEW RIVER, N. C. BUREAU OF YARDS AND DOCKS - U. S. NAVY
WELLS NO. 7 & 8 AND WELL TRANSMISSION-MAIN DIVISION TRAINING AREA	
APPROVED: <u>Mar 24 1942</u> BY: <u>W.C.M.</u> RESIDENT OFFICE IN CHARGE	SHEET _____ OF _____ M.B. PROJ. NO. <u>E-108-4</u> M.B. DWG. NO. <u>266</u>

REVISION	DATE	BRIEF	R.O. IN CHARGE	BY

PRINTED ON 1941 TRACING PAPER
 EUGENE F. ZIEGLER CO., INC., CHICAGO-NEW YORK

