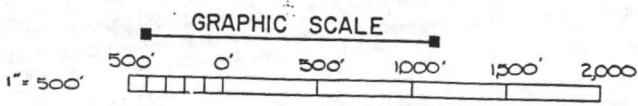
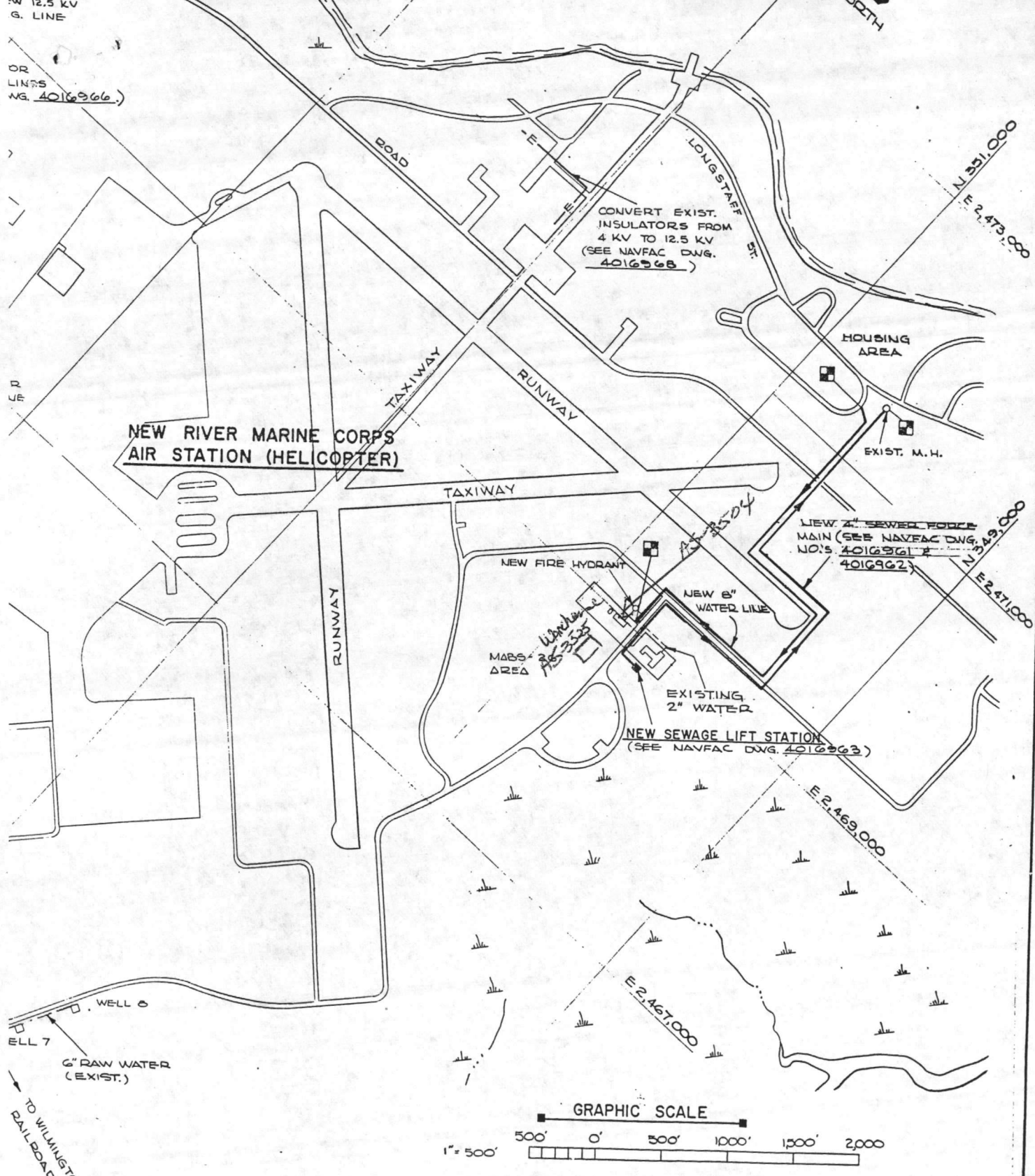


12.5 KV
G. LINE
OR
LINES
NG. 4016966



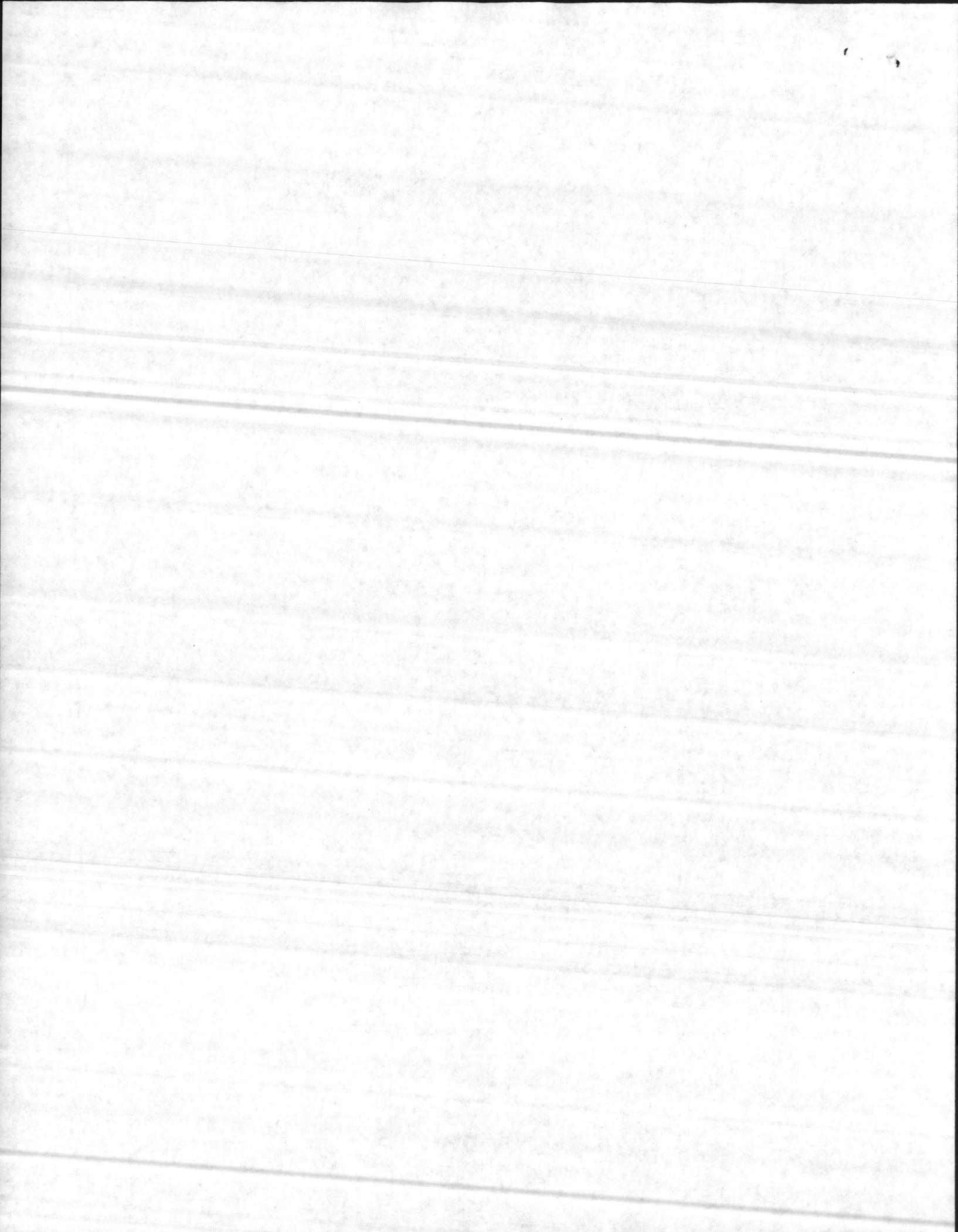
TO WILMINGTON N.C.
RAILROAD



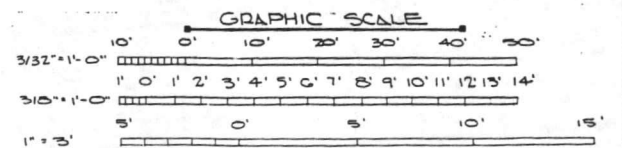
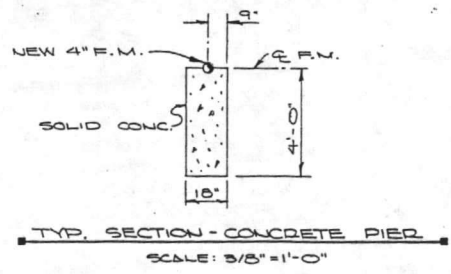
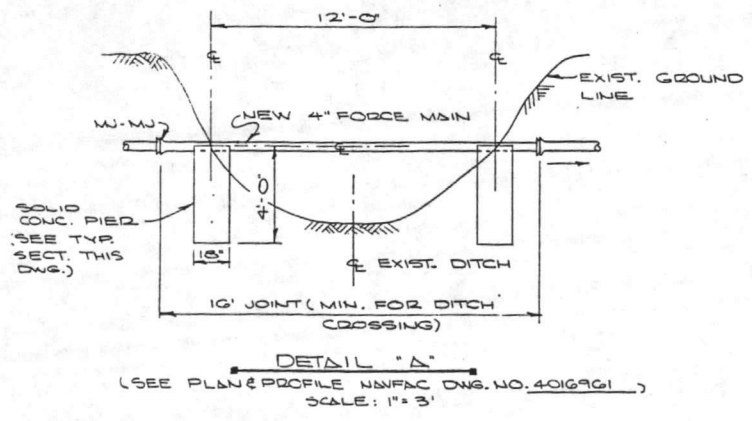
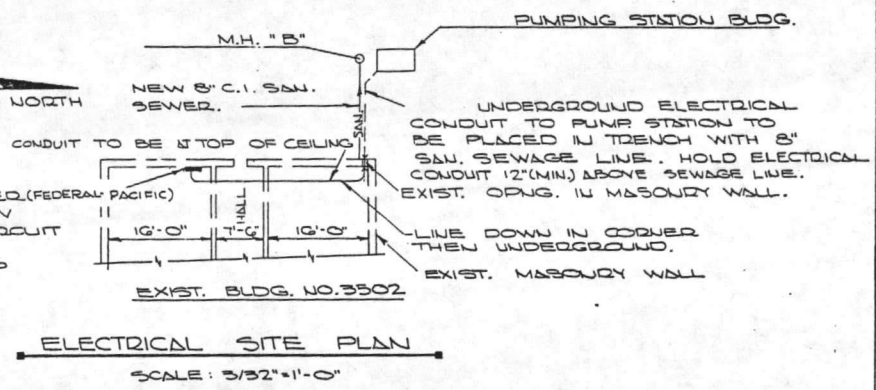
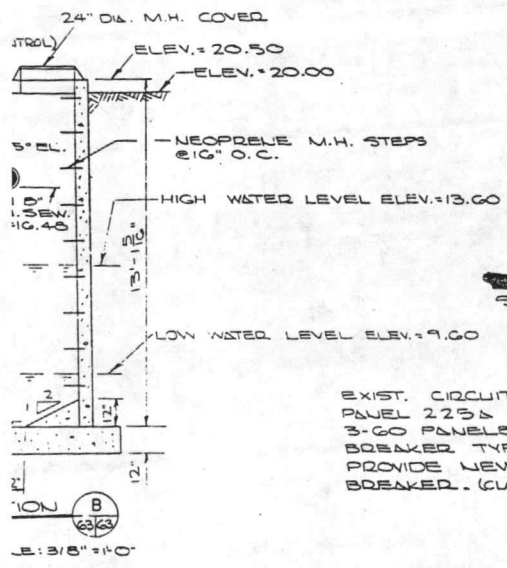
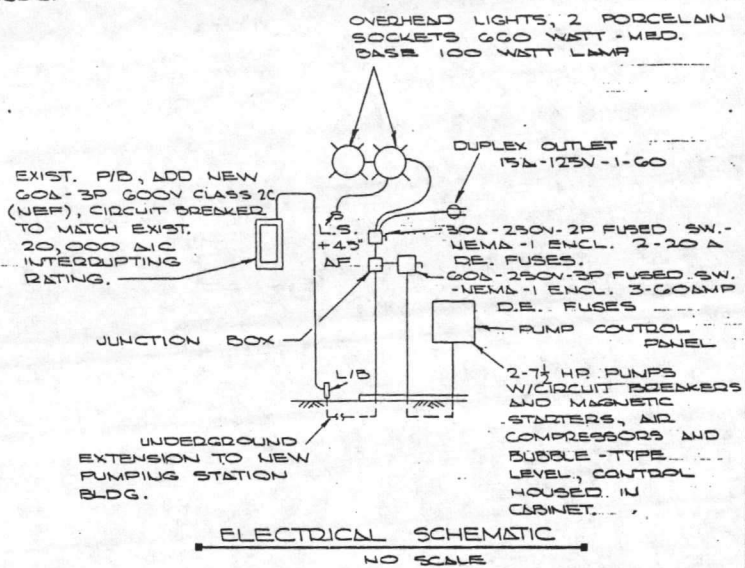
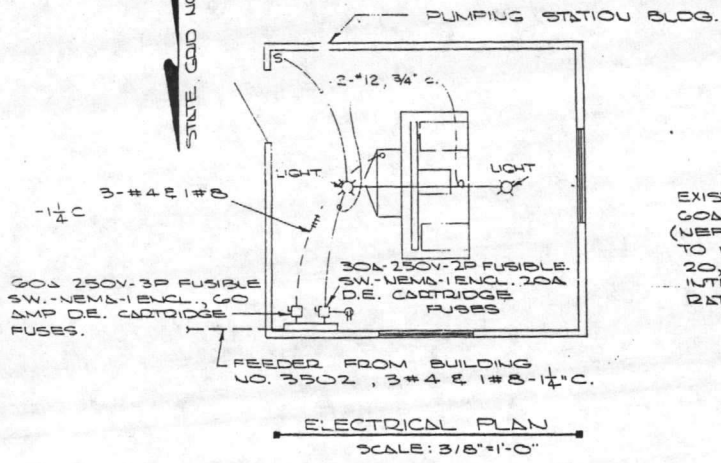
J. K. TIMMONS & ASSOC., INC. 1314 WEST MAIN STREET RICHMOND, VIRGINIA CONSULTING ENGINEERS		DEPARTMENT OF THE NAVY NAVAL FACILITIES ENGINEERING COMMAND ATLANTIC DIVISION NAVAL STATION NORFOLK, VA.	
DES. M.L.E. DR. C.L./DBCHK. M.L.E. PROJ. MGR. M.L.E. CH. ENGR. J.H.H. SUBMITTED BY: <i>Y.V. K. Elrod</i> DATE: 9/12/74 FIRM MEMBER PRINCIPAL EFD RVD <i>J.H.H.</i> HD <i>L.K.</i> DIR <i>J. DAVIS, P.E.</i>		NEW RIVER MARINE CORPS AIR STATION (HELICOPTER) JACKSONVILLE, NORTH CAROLINA UTILITY EXPANSION	
APPROVED: <i>J.F. Maden</i> DATE: 1/29/74 OFFICER-IN CHARGE APPROVED: <i>[Signature]</i> DATE: NOV 1974 FOR EFD FOR COMMANDER NAVFAC		LOCATION PLAN SIZE: F CODE IDENT. NO.: 80091	NAVFAC DRAWING NO.: 4016887 CONST. CONTR. NO.: N62470-73-B-1155
SCALE: 1"=500'		SPEC. 05-73-1155	SHEET 1 OF 83

USE GRAPHIC SCALE

E.F.D. NO. 116887



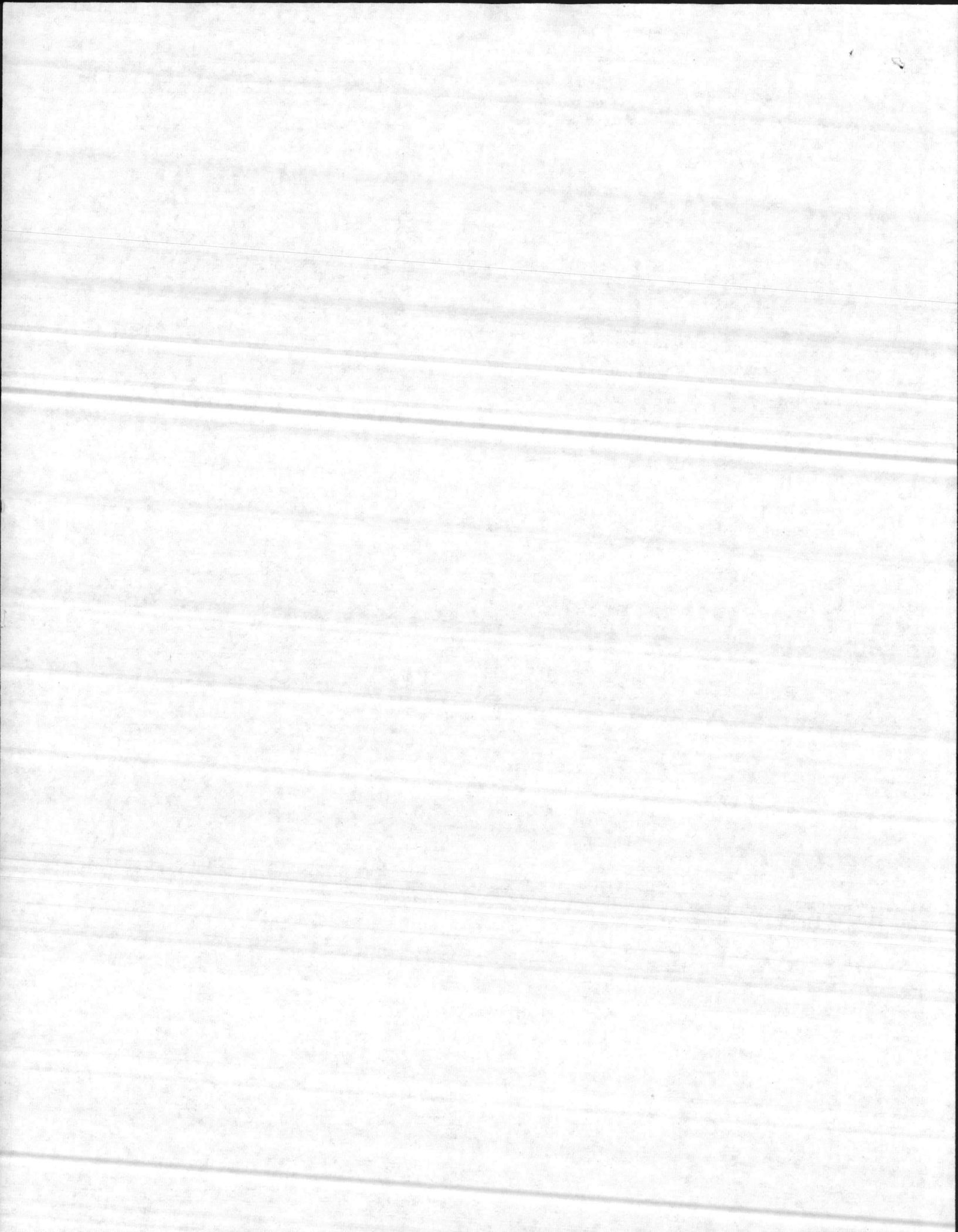
REVISIONS		
NO.	DESCRIPTION	DATE

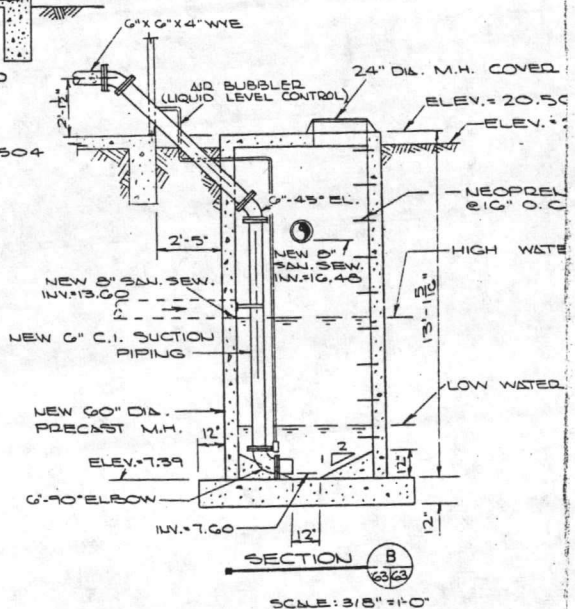
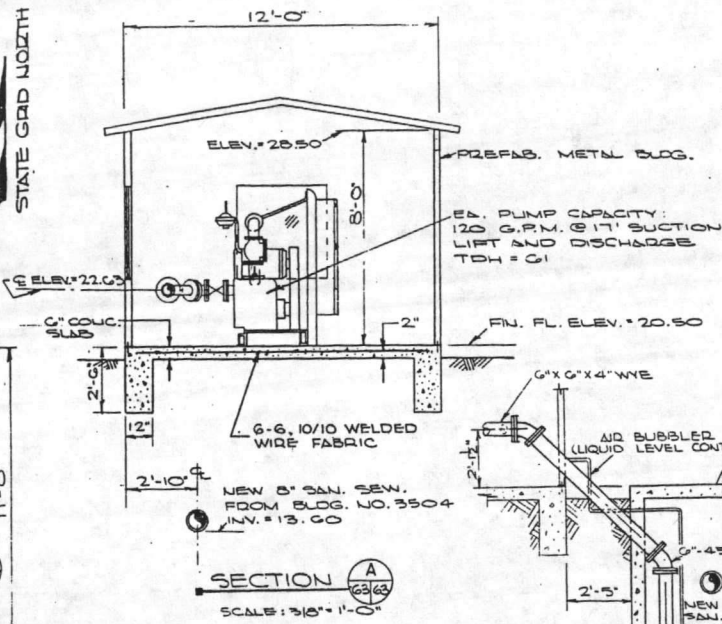
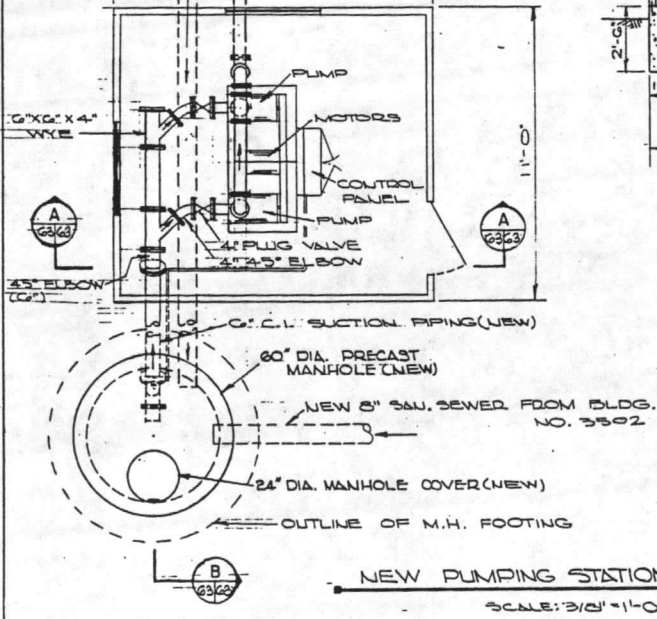
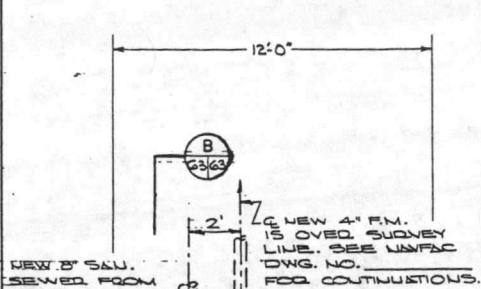


NOTE: ALL WORK AND MATERIALS NOT SPECIFICALLY NOTED AS EXISTING IS NEW AND SHALL BE PROVIDED BY CONTRACTOR.

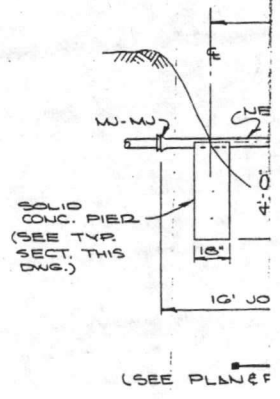
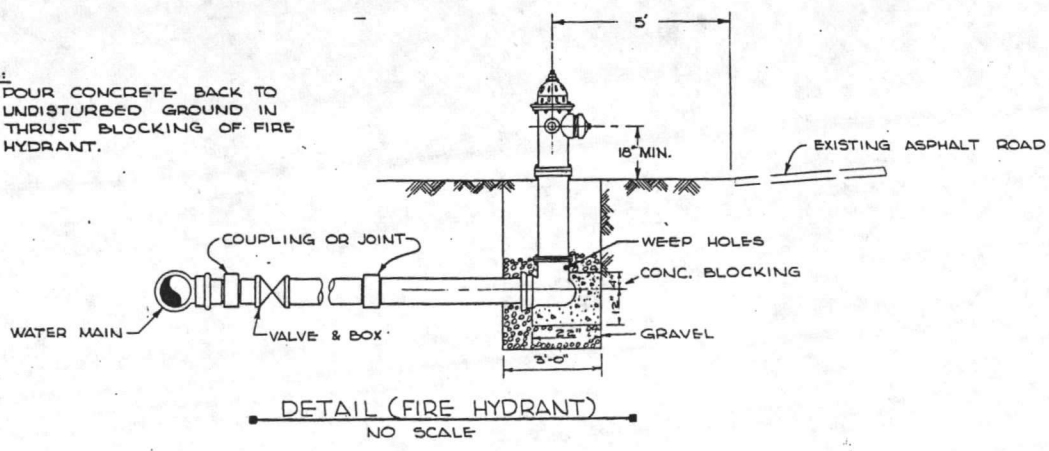
	J. K. TIMMONS & ASSOC., INC. 134 WEST MAIN STREET RICHMOND, VIRGINIA CONSULTING ENGINEERS	DEPARTMENT OF THE NAVY NAVAL FACILITIES ENGINEERING COMMAND ATLANTIC DIVISION NAVAL STATION NORFOLK, VA.
	DES. M.L.B., D.R.C.L./D.P.C.H.K. M.L.B. PROJ. MGR. M.L.B., CH. ENGR. J.H.H. SUBMITTED BY: <i>T.M.S.</i> DATE: <i>9/11/74</i> FIRM MEMBER: <i>Timmons</i> PRINCIPAL E.P.D. R.V.D. HD. <i>Timmons</i> DIR. <i>Timmons</i> APPROVED: <i>Timmons</i> DATE: <i>7/23/74</i> OFFICER IN CHARGE: <i>Timmons</i> DATE: <i>14 NOV 74</i> APPROVED: <i>Timmons</i> DATE: <i>14 NOV 74</i>	NEW RIVER MARINE CORPS AIR STATION (HELICOPTER) JACKSONVILLE, NORTH CAROLINA UTILITY EXPANSION MABS 26 PUMPING DETAILS

ALL-SIZE PRINT - USE GRAPHIC SCALE

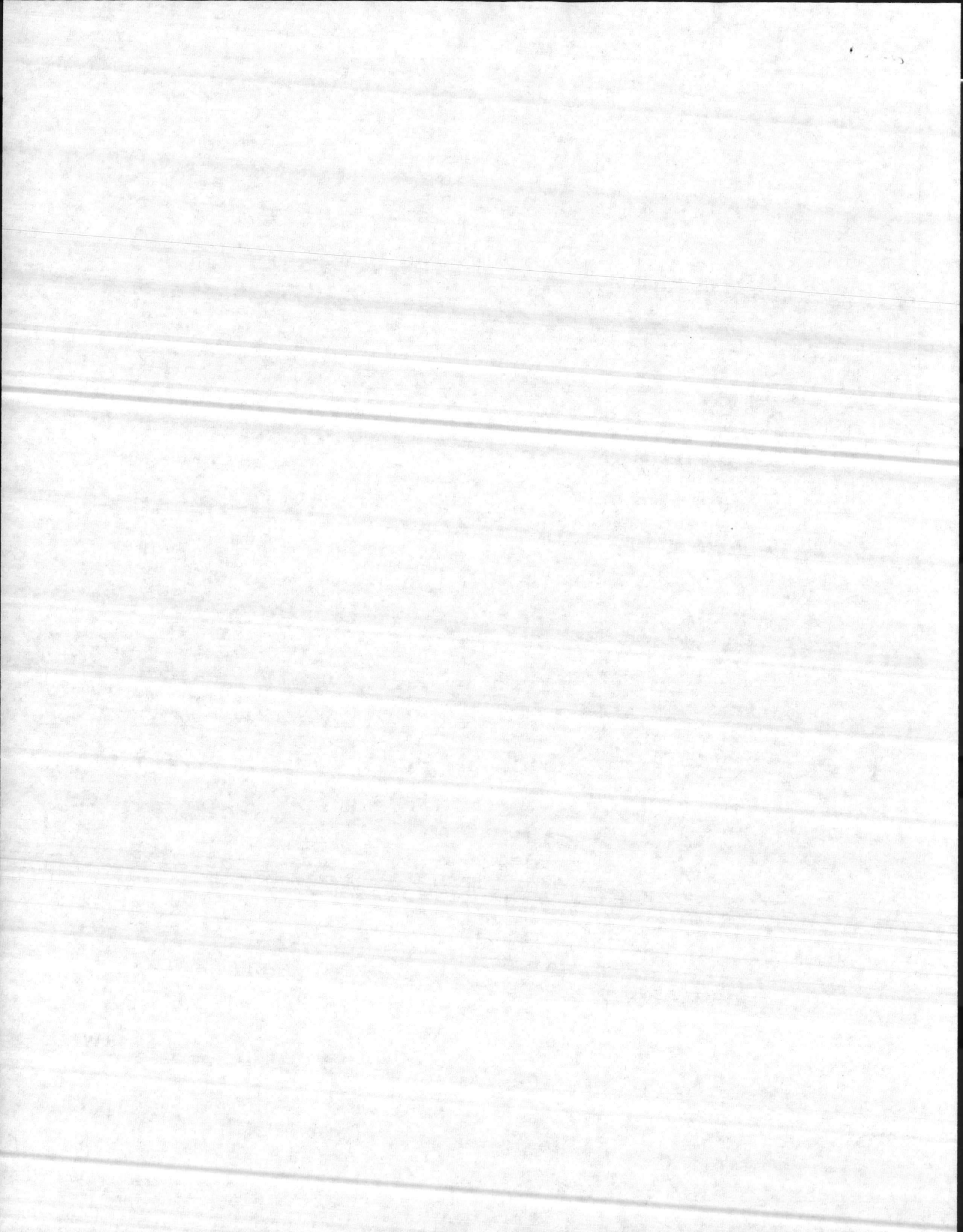




NOTES:
POUR CONCRETE BACK TO UNDISTURBED GROUND IN THRUST BLOCKING OF FIRE HYDRANT.



NOTE: THIS IS A HALF-SIZE PRINT - USE GRAPH!



WOODED AREA

STA. 6+15±

WOODED AREA

BLDG 3525

NOTE: TIE INTO EXISTING 8" WATER MAIN AT NEW SERVICE BOX. NEW SHUT OFF VALVE AND CHECK VALVE SHALL BE PRO

TIE INTO EXISTING MANHOLE AT STA. 10+44. COVER ELEVATION 21.2 INV. ELEVATION 19.0

EXIST. FIRE HYDRANT

98°-49'

EXIST'G M.H.

STA. 10+44

BLDG 3504

Cont 82-4557
Dwg 4080672

GONZALEZ RD

DRIVE

WATER
EXIST 8" TREATED

